

# Isle of Portland Industrial Archaeology Survey: Phase 1 Assessment Report

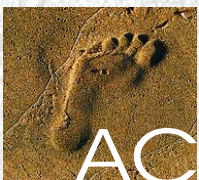
---

Prepared by:  
Peter Stanier and Peter Cox

On behalf of:  
English Heritage

Document No: 0706/1/0

Date: March 2007



AC archaeology

---

# ISLE OF PORTLAND INDUSTRIAL ARCHAEOLOGY SURVEY: PHASE 1 ASSESSMENT REPORT

Peter Stanier & Peter Cox

---

## 1. INTRODUCTION

**1.1** This report sets out the results of Phases 1 and 2 of the *Isle of Portland Industrial Archaeology Survey*, commissioned and funded by English Heritage through the Aggregates Levy Sustainability Fund (ALSF). The study has been undertaken by AC archaeology with Peter Stanier during the period November 2006 to March 2007.

**1.2** The project has been undertaken in accordance with a Project Design approved by English heritage on October 2006. Phase 1 of the project comprises two stages of research:

- Stage 1: identification of past, current and future aggregates extraction areas
- Stage 2: desk study to identify data for inclusion in the county Sites & Monuments Record

**1.3** The overall aim of the project is to improve the regional and local curatorial management of the Historic Environment of Portland in relation to the exploitation of crushed limestone aggregate. The principal objectives are:

- To incorporate where possible, information (location/date/extent) about past, current, and future quarrying of Portland stone and the production of aggregate on to the county SMR.
- To enhance and validate the county SMR records for aggregate producing areas of Portland.

**1.4** An assessment of the currently recorded data will be made and used as the basis of future survey proposals, This will be proposed in an updated project design in due course.

## 2. RESULTS OF STAGE 1: LOCATION OF PAST, CURRENT AND FUTURE EXTRACTION ON PORTLAND

### 2.1 Historical Background

**2.1.1** The winning and working of stone on Portland has taken place for at least 2,000 years. Extraction has been dominated by the winning of dimension stone, but aggregates are being or have been extracted as a secondary part of the Portland quarrying industry at various quarry sites, such as at Admiralty, Bowers, Broadcroft, Coombefield and Independent. This relates to quarrying of bedrock (cherty series) beneath the true Portland freestone beds, and the 'cap' stone formerly removed as overburden and discarded as waste, as well as freestone wastes used as aggregates.

**2.1.2** Stone was first crushed in the mid-1930s for agricultural lime. In 1938-39 capstone was crushed for mass concrete and dry crushed rock. A new tar macadam plant was built in 1947 and used crushed rock. The 1950s saw cap and roach being crushed for special cement making and as a fluxing limestone, both shipped from Castletown Pier to the Thames. This material was acquired during quarrying for dimension stone as well as by removing waste banks. In 1962 Kingston Minerals (B&P Group) were crushing cap at their active Broadcroft Quarry, where they had a crusher, and in 1964 they began clearing waste banks here. A peak of 191,000 tonnes of aggregates was reached in 1968, the same year that large-scale quarrying of the underlying Cherty Series began at Broadcroft. By 1977 this had reached the base of these beds. Meanwhile, high competition in the late 1960s had resulted in the loss of the markets for fluxing limestone, specialist cement, tarmacadam and agricultural limestone. Portcrete Ltd, which made precast concrete building components (including Centre Point in London), closed in 1977. Its Wide Street works had used crushed cap. Losses of markets for crushed rock and the traditional dimension stone led to a review of future quarrying in 1977. This acknowledged there were potentially huge reserves of crushed rock aggregate on Portland lying beneath the worked out

quarries. The idea of extracting this and shipping it from new piers was examined, alongside environmental considerations.

**2.1.3** Quarrying for crushed stone (aggregates) beneath the Portland dimension stone beds into the Cherty Series has taken place at Broadcroft Quarry and is now taking place at Coombefield. This latter quarry is certainly processing and crushing all suitable stone not required as building stone. The same may be true of Albion Stone's quarries at Bowers and Independent. Elsewhere, the overlying cap, some roach and waste Portland building stone has been taken for crushing from, for example, Perryfield, Inmosthay and Tout. This last quarry has evidence of disturbance and removal of waste banks at the south end, probably in the 1960s or '70s and perhaps for the Portcrete works. The removal of much earlier waste banks for crushing is a form of 'delayed quarrying', many decades after the dimension stone was first quarried and the overlying cap thrown aside.

**2.1.4** The re-working of old dimension stone quarries for aggregate is a potential threat to aspects of the historic landscape in particular (see 2.2.5) the nationally important dimension stone industry, and areas of importance should be identified to provide for the better understanding of the landscape and appropriate management of the impact of future extraction.

## **2.2 Future proposals**

**2.2.1** The Dorset Minerals and Waste Local Plan adopted in 1999 is the current minerals plan for mineral working on Portland. This plan acknowledges that aggregates from crushed limestone are sourced in Dorset only from Portland and the Isle of Purbeck.

**2.2.2** Changes to the Planning & Compulsory Purchase Act 2004 have included the abolition of Structure Plans and requires local authorities to replace them with a system of Development Documents; principally the Minerals and Waste Development Framework (MWDF). This document exists for the period 2004 – 2007. The policies contained in the original Minerals Plan are *saved* until September 2007. The Local Development Frameworks will eventually be replaced by appropriate parts of a new Regional Spatial Strategy (RSS), the draft of which was issued in 2006, and Development Documents (DDs). Annual monitoring of progress towards the development and implementation of the MWDF is presented in the Annual Monitoring report (AMR); the latest available for Dorset covers the period 1 April 2005 to 31 March 2006.

**2.2.3** The 2006 AMR shows a decline in crushed rock produced during the period 2001 (0.44 million tons) to 2006 (0.20 million tons). There were no new planning applications determined during the period that relate to working minerals on Portland.

**2.2.4** There are extensive areas of Portland that are included in existing permissions that have, or are undergoing ROMPP (Review of Mineral Planning Permissions) procedures (**Fig. 1**). Within these areas there is pressure on mineral operators to include restoration proposals. These may include historic quarries that contain important industrial archaeology evidence. Discussion with the MPA has established that only those areas nominated in the existing ROMPP planning applications and ES submissions will be allowed in the duration of the current mineral structure plan. These may emerge during 2007 as the MWDF develops.

**2.2.5** Of particular note within the Draft RSS is the inclusion of policy RE12 *Recycled and Secondary Aggregates*. This seeks provision to be made for 121 million tons of secondary or recycled aggregates to be utilized during the plan period of 2006 – 2016. This specifically includes the re-use of waste tips in (China Clay) quarries, but does not exclude the possibility that limestone quarry waste could also be used.

### 3. RESULTS OF STAGE 1: IDENTIFICATION OF ARCHAEOLOGICAL SITES

#### 3.1 Introduction

**3.1.1** About 400 sites belonging to the industrial period (c.1750 onwards) have been identified, mostly from map sources and the Dorset SMR. The scope is wide but those sites most relevant to the stone industry include: quarries, tramways, railways, stone saw mills and masonry works, limekilns, stone-loading quays and cranes. Other industrial sites on Portland include: lighthouses, navigational aids, coastguard stations, waterworks, gas works, blacksmiths shops, a foundry and numerous boundary stones. The Convict Prison as well as chapels and churches also fall within the period. The prison is directly related to quarrying, as are numerous Victorian and C20 defensive military works around the island, erected on a truly 'industrial' scale. Identified sites of potential interest have been listed on a spreadsheet, although there is space for the addition of further sites (See **Fig. 2** and **Appendix 1**)

#### 3.2 The Dorset SMR, National Monuments Record, Listed and Scheduled sites

**3.2.1** The Dorset SMR has been examined at County Hall, Dorchester. Of the c400 sites noted above, only c146 are listed in the Dorset SMR. This current work should therefore go a long way in remedying this shortfall. The SMR is also, for example, top-heavy with military sites because of input from the Defence of Britain Project. Considering that quarries represent the main industry and physical features in the Portland landscape, they are very lightly reported with no attention to detail. Only 16 quarries are listed in the SMR, of which two are vaguely named as 'Roman' and 'medieval' quarries covering the whole island. This compares with a total of 74 quarries identified in this current work. A combination of mapwork and fieldwork is required to define the margins of individual quarries, especially where some merge into each other. At least 15 limekiln sites have been identified from maps, whereas the SMR appears to include just two sites (one related to the post-medieval Portland Castle and the other a place name).

**3.2.2** Some sites appear to be duplicated in the SMR and their grid references require checking. Occasionally the local geology for sites of all periods is described as 'carboniferous limestone'. It is not carboniferous.

**3.2.3** Of the sites identified, only 69 appear to be on the National Monuments Record.

**3.2.4** There are 78 sites with Listed Building status. These include five tramway bridges, a limekiln, three lighthouses, two windmills, a daymark, a water cistern and the breakwater. Of the eight Scheduled sites on Portland, four date from the Industrial period. Of these, three are related to military defence, while the last is the Portland Bill stone loading quay.

**3.2.5** The Images of England list is also a useful source of information and recent photographs of Listed sites.

**3.2.6** SMR, NMR, Listed and Scheduled sites are noted in **Appendix 1**.

#### 3.3 A recording methodology

**3.3.1** A review of currently used terminology for industrial monuments has been undertaken with the Dorset SMR Manager. The principal issues are summarized below.

**3.3.2** In general the currently used Monuments Thesaurus is inadequate when entering QUARRY in Portland. Quarries have special elements and the term 'Quarry' fails to address these. A quarry is more than just a void – for example, key elements include a stone working face, areas of waste tipping, sites of cranes and tramways. Stone working faces are unusual in some Portland quarries, being 'islands' of unquarried stone rather than faces defining the margins of the excavation.

**3.3.3** There appears to be no word to cover stone quarry waste. The term SPOIL HEAP (conical or flat-topped) has been defined in relation to mines or 'similar sites'.) Apart, perhaps, from overburden, the material tipped from a building stone quarry is completely different from that of a coal or other mine. On Portland there are particular types of waste tipping – the 'spoil heaps' can be distinguished as 'benches' and 'beaches' or more conventional tips. The three main types need to be examined by fieldwork in order to make definitions that can be transferred (hopefully) to other quarry areas. Cliff-side tips have special tipping places.

SAW MILL refers to timber and not stone. Stone saw mills were once common on Portland.

The following Glossary of terms illustrates the variety of distinct features to be found at Portland quarry sites that are to be incorporated into the SMR:

### **Quarry**

Broad term including whole area of **quarry face**, **gullet**, **bank** and **waste tips**, within which may be **cranes**, tramways, buildings etc. Quarry bounds may be determined by property boundaries, which sometimes result in 'islands' of unquarried ground within the main quarry area (e.g. at Tout and Inmosthay).

### **Quarry face**

The exposure of natural stone beds *in situ* - the latest working area. May have **bore holes**, **pits** or evidence of machine **channelling** or **broaching**.

### **Bank**

Waste tip including quarried blocks of cap, roach, etc. May be faced with a *bank wall*. Top may provide support for a crane, etc. Term refers more to older type of well-built tip rather than modern type of dump.

### **Bank wall**

Built of large squarish quarried cap and roach blocks, as a retaining wall for waste material behind. This is called a **stack** in South Western Stone Co.'s book *Portland Stone*, 1933.

### **Beach**

Waste tip of mainly Purbeck overburden. Smaller material than in bank.

### **Finger dump**

Narrow overburden tip or beach, formed by barrowing or tramping waste in systematic manner; level top.

### **Stack**

A stockpile of quarried blocks ready for sawing etc. also refers to **bank wall**.

## **3.4 Mapping Portland's Quarrying History & Industrial Archaeology**

**3.4.1** Historical maps chart the progress of quarrying on Portland from which it may be possible to date existing quarry remains. Not all of the earliest maps give accurate details of quarries, workyards, tramways and piers. Maps published in 1800, 1832 and 1841 are of a large enough scale to be useful before the first large-scale Ordnance Survey maps were made in 1863. These accurately depict the full extent of quarrying for the first time. Subsequent revisions of 1901, 1926 and 1959 chart developments through the twentieth century and include the layout of masonry workyards. It should be noted that quarry maps show conditions only at the time of

survey, for within days the face could be extended or the positions of cranes or tramways altered. However, the maps remain a useful tool for interpreting quarry layouts and their historical development.

**3.4.2** These maps also depict industrial archaeology (exclusive of quarries) on the Isle of Portland. The earliest maps show the location of stone-shipping piers, the two windmills, lighthouses and other features. Later maps include railways, tramways and inclines, stone masonry works, limekilns, gasworks, waterworks, military installations, Portland harbour and breakwater, etc. (see **Appendix 2**)

**3.4.3** Eleven stages have been identified for the purposes of constructing a Historic Quarrying Map of Portland. The maps chosen are those considered to have been the most accurate and informative, dating from 1710 to 2006. (**Fig. 3**)

### **3.5 Secondary Sources**

**3.5.1** A list of secondary sources has been compiled, including all relevant references to quarrying and industries on the Isle of Portland. Some are clearly more useful than others. (**Appendix 3**)

### **3.6 Illustrations and Photographs**

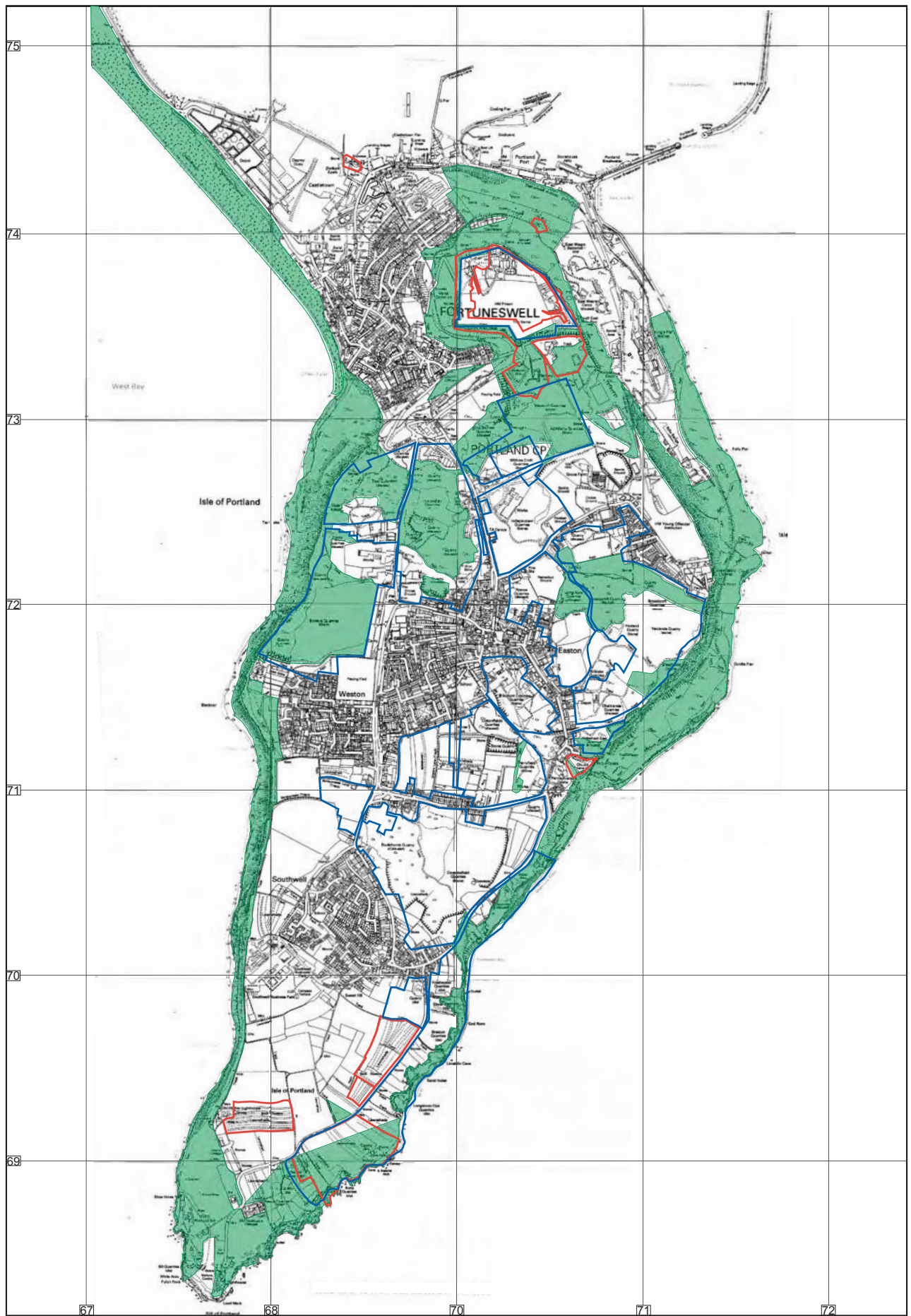
**3.6.1** It is possible that illustrations, such as prints, engravings, paintings, etc, can be informative but their technical accuracy depends on the artist (see, e.g. Pentin, 1916). Photographs may be used to support field evidence and contemporary accounts. They provide records from the mid-nineteenth century onwards. However, many are undated and unlocated, so can only be useful as background material. The most valuable photographs have been dated, with accurate locations, and the fine collection of the British Geological Survey, Nottingham, is one of the best examples.

**3.6.2** While many photographs are still held in private hands, those in the public domain - either published or held in library or museum collections - are of the greatest immediate value for a study of the quarries. Other images are available, for example, through the website of the Dorset Coast Digital Archive ([www.dcd.org.uk](http://www.dcd.org.uk)) which includes photographs, engravings, and paintings etc from Dorset County Museum, Weymouth Ref Library and Russell Coates Museum.

**3.6.3** Published photographs have been listed (**Appendix 4**). This study has also included a digital compilation of over 200 of the most useful photographs and illustrations. (**Appendix 5 – but not included**)

### **3.7 Aerial photographs**

**3.7.1** The NMR holds a large collection of oblique and aerial photographs which could prove useful in determining the dates and progress of quarry developments, tramways, etc. Obliques date from 1923-4 (4), 1941 (3), 1948 (47), 1949 (4), 1950 (75) and 1995-2004 (36). Verticals date from 1942 (1), 1945 (1), 1946 (3), 1948 (1), 1949 (9), 1950 (14), 1951 (10), 1961 (4), 1963 (1), 1967 (5), 1968 (5), 1969 (2), 1971 (3) and 1987 (18). Earlier dates and those of the 1950s and 1960s could prove particularly useful. These have not yet been examined. (**Appendix 6 & 7**)



- Site of Special Scientific Interest
- Scheduled Monument
- Existing planning consent for quarrying  
(Dorset minerals & waste local plan, 1999)



**Fig. 1:**  
Current planning permissions and principal environmental designations

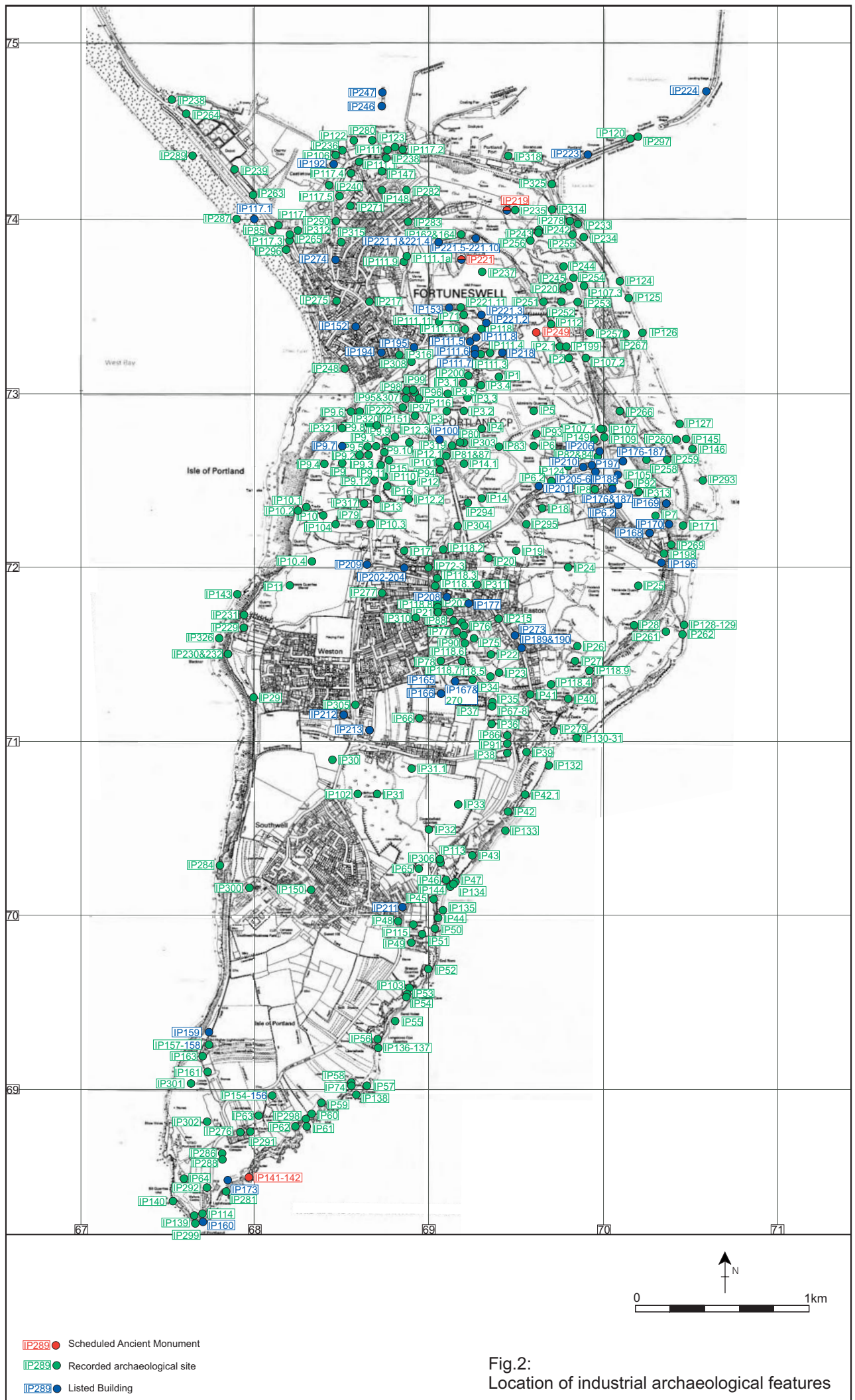
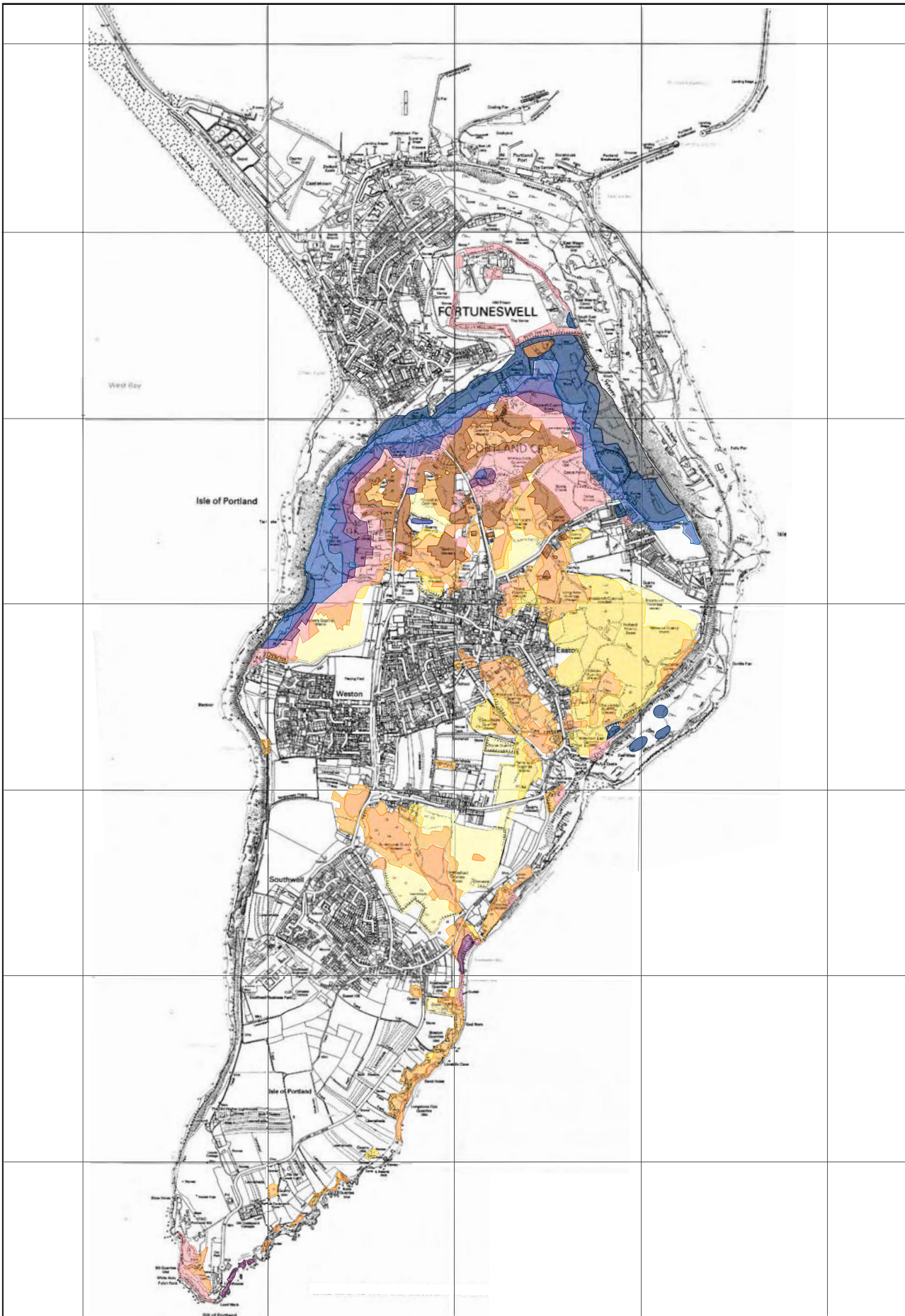


Fig.2:  
Location of industrial archaeological features





- 11- by 2006/7
- 10- by 1959/60
- 9- by 1927
- 8- by 1900
- 7- by 1889
- 6- by 1863
- 5- by 1841
- 4- by 1828/32
- 3- by 1800
- 2- by 1745
- 1- by 1710

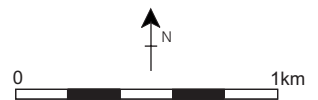


Fig. 3:  
Historical development of quarrying on Portland

## Appendix 1: archaeological sites

ACNo	SMR	NMR	Grid Ref	Site Name	Mon Type	Date	Description	Sources	Status	Current record
IP1			SY 6940 7310	Waycroft Quarries	Limestone Quarry		Large quarry area worked progressively throughout C19, as indicated on maps. Served by incline from Merchants' Railway			
IP2			SY 6979 7320	Nicodemus Quarries'	Limestone Quarry	pre 1710	Site of earliest quarries, shown on 1710 map.			
IP2.1			SY 6975 7327	Nicodemus Knob	Quarry face	C19	Pillar of unquarried stone remaining from C19 deeper quarrying of cherty series.			
IP3			SY 6910 7290	King Barrow Quarries	Limestone Quarry		Large quarry area worked progressively throughout C19, as indicated on maps. Served by branches from Merchants' Railway			
IP3.1			SY 6920 7305	King Barrow Quarries	Quarry Face		Isolated 'island' with surrounding quarry face; north side buried			
IP3.2			cSY 6920 7290	King Barrow Quarries	Waste tips		Extensive areas of waste beaches			
IP3.3			SY 6928 7305	King Barrow Quarries	Tramways		Main tramway course and branches in deep cutting between waste beaches			
IP3.4			SY 6922 7299	King Barrow Quarries	Tunnel		Tramway tunnel beneath waste, constructed of large rough blocks (1)	(1) Map: OS 1889		
IP3.5			SY 6911 7300	King Barrow Quarries	Tunnel		Site of tramway tunnel beneath waste (1)	(1) Map: OS 1889		
IP4			SY 6930 7280	Withies Croft Quarries	Limestone Quarry		Large quarry area worked progressively throughout C19, as indicated on maps. Served by incline from Merchants' Railway; large areas backfilled and difficult to interpret			
IP5			SY 6960 7290	Admiralty Quarries	Limestone Quarry		Extensive quarry area opened and worked for Breakwater Works and served by network of tramway branches. Difficult to interpret.			
IP6			SY 6960 7270	Prison Quarries	Limestone Quarry		Extensive quarries worked by convicts for government works. Quarry face on south side; also includes limekiln. Now partly filled and levelled for playing fields.			
P6.1			SY 6975 7255	Prison Quarries	Quarry Face		Quarry face along south side of area			
P6.2			SY 6970 7250	Prison Quarries boundary wall	Wall		Boundary wall along Grove Road for Prison quarries; also to north		Listed II 969-1/1/131	
IP7	4 001 010 - MDO6514	SY77 SW8	SY 703 723	HM Young Offender Institution, The Grove	Limestone Quarry		Long description. Includes quarry area levelled and converted to recreation ground			
IP8			SY 6995 7246	Grove Quarry	Limestone Quarry	1863-1960	Site, now filled and developed for housing			
IP9			SY 6850 7260	Tout Quarries	Limestone Quarry		Large quarry area worked progressively throughout C19, as indicated on maps. Served by branches from Merchants' Railway			
IP9.1			SY 6868 7270	Tout Quarries	Quarry Face		Small isolated 'island' with surrounding quarry face; north side buried			

ACNo	SMR	NMR	Grid Ref	Site Name	Mon Type	Date	Description	Sources	Status	Current record
IP9.2			SY 6860 7265	Tout Quarries	Quarry Face		Isolated 'island' with surrounding quarry face			
IP9.3			cSY 6865 7265	Tout Quarries	Waste tips	C19	Large area of waste tips (beaches) with walls and tramway courses			
IP9.4			cSY 68407260	Tout Quarries	Overburden waste tips	C19	Large area of high waste tips dissected by cuttings for tramway courses to West Cliff tipping places			
IP9.5			SY 68657270	Tout Quarries	Shelters	C19	Example of 7 quarrymen's shelters built into waste tips			
IP9.6			SY 6855 7290	Tout Quarries 'Big Tip'	Waste tip	C19	Prominent waste tip over West Cliff with tramway course leading out from entrance to Tout Quarry			
IP9.7			SY 685 727	Lano's Arch	Bridge	1854	Drystone arch of fine proportions with datestone inscribed JC Lano 1854. Listing calls this 'foot bridge over track or quarry rail bed'. It carried waste tramway over a branch of Merchants' Railway and/or lower tipping tramway.	Map: OS 1864	Listed II 969-1/1/191	
IP9.8			cSY 6865 7281	Tout Quarries	Tramways	C19	Tramway courses, branches of Merchants' Railway, various phases; there was a double track through main entrance, shown on the 1889 OS map, and indicated by sleeper blocks.			
IP.9			SY 6875 7273	Tout Quarries Wide Street Tunnel	Tunnel	1862	Stone arch with 'J.C. LANO 1862' on keystone. Sealed with brick wall with keystone crudely carved 'E.C. GILLINGHAM MAY 25TH 1914' and below this a concrete block wall crudely inscribed 'CLOSED BY G. RICKETT G. JAMES JULY 4TH 1972'. (1-2)	(1) Map: OS 1864 (2) Field observation:		
IP9.10			SY 6874 7267	Tout Quarries Wide Street Tunnel	Tunnel	C19	West portal of tramway tunnel beneath Wide Street. Arch has no apparent date stone. Unusual alignment towards NE.			
IP9.11			SY 6871 7259	Tout Wide Street Tunnel	Tunnel	1866	West portal of tramway tunnel beneath Wide Street. Stone arch with '1866' carved on keystone.			
IP9.12			SY 6869 7250	Tout Wide Street Tunnel	Tunnel	C19	Not shown on 1889 map. 'Disused subway' beneath Wide Street marked on 1960 map. (1) Site now buried.	(1) Map: 1960 25-inch OS map.		
IP10			SY 6840 7230	Trade Quarries	Limestone Quarry	C19	Large quarry area developed in C19, now mostly backfilled and much redeveloped as a trading estate. Wide Street Works and limekilns are listed elsewhere.			
IP10.1			cSY 6830 7235	Trade Quarries	Overburden waste tips	C19	Large area of high waste tips dissected by cuttings for tramway courses to West Cliff tipping places; continuation of Tout Quarries			

ACNo	SMR	NMR	Grid Ref	Site Name	Mon Type	Date	Description	Sources	Status	Current record
IP10.2			cSY 6825 7233	Trade Quarries	Tipping places	C19	Numerous tipping places along West Cliff, a continuation of Tout Quarries			
IP10.3			SY 6867 7226	Trade Wide Street Tunnel	Tunnel	C19	Tunnel' on 1889 map with track but no tramway (1) The 1864 map names no tunnel but suggests there was a tramway when quarrying was starting on the east side of Wide Street (2)	(1) Map: OS map 1889 (2) Map: OS 25-inch map 1864		
IP10.4	4 001 368 - MWX4405		SY 68325 72027	Magazine			Magazine site, according to SMR (1)	(1) Map: OS 1891		
IP11	WX3877 - MWX3877		SY 6820 7190	Bowers Quarries	Limestone Quarry		Much enlarged in later C20 but older quarries and waste tips survive along West Cliff			
IP12			SY 6890 7250	Inmosthay Quarries	Limestone Quarry		Extensive quarried area in centre of island with tramway courses and waste tips. Disturbed by late C20 quarrying. Backfilled to north where there is a small 'island' of unquarried stone. A larger 'island' remains towards the south. This includes the historic spoil tip known as Fancy Beach (AC site No.IP15).	Maps: 1864 onwards		
IP12.1			SY 6889 7272 (centre)	Inmosthay Quarries	Quarry Face		Small 'island' of unquarried stone, north side formed bny 1889 and south side by 1900 (1-2)	(1-2) Maps: 1889 and 1901		
IP12.2			SY 6887 7240	Inmosthay Quarries	Quarry Face		Large 'island' of unquarried stone. Impressive quarry face worked back to a corner along a major joint. Perhaps worked in 1930s? - certainly since 1927.			
IP12.3			SY 6880 7275	Inmosthay Quarries	Tramways		Course of tramways through north part of quarries, with some stone sleeper blocks. Tunnel portal under Wide Street to Tout Quarry is blocked (2006)			
IP13			SY 6870 7240	Wide Street Quarries	Limestone Quarry		Along east side of Wide Street, named on maps as separate quarries but now incorporated within the Inmosthay workings			
IP14			SY 6930 7240	Independent Quarries	Limestone Quarry		Finally worked out in early C21			
IP14.1			SY 692 726	Independent Quarries bridge	Bridge	pre-1889	Bridge over quarry tramway on 1889 map and surviving in 1926-7			
IP15	4 001 325 - MWX4239		SY 6875 7262	Fancy Quarry	Limestone Quarry	1828	Fancy Quarry in Wide Street with tramway into a strip field in Inmosthay in 1828 (1). 1841 map shows quarry in Wide St but not named (2). Not shown on 1864 map (3)	(1) Map: 1828 (2) Map: Tithe Map 1841 (3) Map: OS map 1864		
IP16			SY 6880 7243	Fancy Beach	Quarry waste tip	1828	1828 map shows 'Rail Road' from 'Fancy Quarry' in Wide Street leading into a strip field in Inmosthay owned by Wake & Daniel, the origin of the Fancy Beach waste tip which survives today. (1)	(1) Map: 1828		

ACNo	SMR	NMR	Grid Ref	Site Name	Mon Type	Date	Description	Sources	Status	Current record
IP17			SY 6885 7210	Jordan Quarry	Limestone Quarry		Southern part of Inmosthay workings			
IP18	4 001 350 – MWX43 ????		SY 6965 7234	Higher Headlands Quarry	Limestone Quarry					
IP19	4 001 348 - MWX4386		SY 6950 7210	Long Acre Quarries	Limestone Quarry		site			
IP20	4 001 347 - MWX4385		SY 6935 7205	France Quarries	Limestone Quarry		site			
IP21	4 001 346 - MWX4384		SY 6905 7175	Park Quarries	Limestone Quarry					
IP22			SY 6937 7150	Bottom Coombe Quarries	Limestone Quarry		site			
IP23	4 001 344 - MWX4382		SY 6940 7140	Wakeham Quarries	Limestone Quarry					
IP24			SY 6980 7200	Broadcroft Quarries	Limestone Quarry					
IP25			SY 7020 7190	Yeolands Quarry	Limestone Quarry					
IP26			SY 6985 7155	Silklake Quarries	Limestone Quarry	1910-				
IP27			SY 6983 7147	Chalklands Quarries	Limestone Quarry	1901-				
IP28			SY 7016 7168	Shepherd's Dinner Quarry	Limestone Quarry		site			
IP29			SY 6800 7125	Mutton Cove Quarry'	Limestone Quarry	c1894?	small clifftop quarry protected by stack of stone blocks, first named on 1927 map (1) which shows a crane. Earlier maps are unclear. Has fossil trees exposed on part of floor. Mentioned in 1894, with foreman W. Flew (2)	(1) Map: OS 1929 (2) TB Groves, 1894, 169		
IP30	4 001 367 - MWX4404		SY 6845 7090	Weston Quarries	Limestone Quarry	by 1901	also known as Grangecroft			
IP31	4 001 366 - MWX4403		SY 6870 7070	Suckthumb Quarry	Limestone Quarry					
IP31.1			SY 6890 7085	Weston Quarry'	Limestone Quarry	1980s	part of Suckthumb			
1P32	4 001 353 - MWX4390		SY 6900 7050	Coombefield Quarries	Limestone Quarry		Extensively worked in two parts from 1980/90s			
IP33			SY 6917 7064	Quarry	Limestone Quarry		site (destroyed by Coombefield Q)			
IP34			SY 6925 7135	Cottonfield Quarries	Limestone Quarry	1926-60s	Restored ground, now levelled field with hollows. By 1926 there was a quarry here, with two rail sidings. The quarry was still active in 1960.	Map: OS 1929 Map: OS 1960		
IP35			SY 6935 7125	Perryfield Quarry	Limestone Quarry					
IP36			SY 6935 7110	Perryfield extension	Limestone Quarry		modern			
IP37			SY 6925 7125	Perryfield	Limestone Quarry	1980s	modern			
IP38			SY 6945 7093	Perryfield H Quarry	Limestone Quarry	1933-	not on 1926-7 map. A later development by South West Stone Co.			
IP39			SY 6955 7095	Pennsylvania Quarry'	Limestone Quarry		appears to be a small quarry and tip here in 1864 (1) marked but not named on 1926-7 map south of Pennsylvania Castle, with small tipping tramway (2)	(1) Map: OS 1864 (2) Map: OS 1929		
IP40			SY 6980 7125	Wakeham East Quarries	Limestone Quarry					

ACNo	SMR	NMR	Grid Ref	Site Name	Mon Type	Date	Description	Sources	Status	Current record
IP41			SY 6956 7128	Cenotaph quarry'	Limestone Quarry	c1920	small quarry opened especially for stone for Cenotaph war memorial in Whitehall, then bacfilled. Recently developed for housing.			
IP42.1			SY 6945 7060	Southwell Landslip	Limestone Quarry		evidence of stone cutting in landslip area = a quarry?			
IP42.2			SY 6955 7070	Southwell Landslip	Limestone Quarry		evidence of stone cutting in landslip area = a quarry?			
IP43			SY 6925 7035	Duncecroft Quarries	Limestone Quarry					
IP44	4 001 354 - MWX4391		SY 6905 6998	Freshwater Quarries	Limestone Quarry	1901-26				
IP45			SY 6903 7010	Freshwater Quarries West	Limestone Quarry					
IP46			SY 6910 7022	Freshwater Quarries East	Limestone Quarry	-1985				
IP47			SY 6914 7020	Cheyne Cliff	Limestone Quarry		Small quarry below Cheyne pumping station. Quarried to a greater depth than Freshwater East quarry, down to top of chert.			
IP48			SY 6881 6995	Southwell Quarry	Limestone Quarry	1901-26				
IP49	4 001 355 - MWX4392		SY 6890 6985	Sheat Quarries	Limestone Quarry					
IP50			SY 6904 7008 - SY 6904 6994	Cliff quarry	Limestone Quarry					
IP51			SY 6896 6990	Quarry	Limestone Quarry					
IP52	4 001 356 - MWX4393		SY 6900 6915	Breston Quarries	Limestone Quarry					
IP53			SY 6886 6955	Quarry	Limestone Quarry					
IP54			SY 6885 6954	Quarry	Limestone Quarry					
IP55			SY 6880 6950 - SY 6876 6940	Sand Holes Quarries	Limestone Quarry					
IP56	4 001 357 - MWX4394		SY 6870 6930	Longstone Ope Quarries	Limestone Quarry					
IP57	4 001 358 - MWX4395		SY 6868 6906	cliff-top quarry	Limestone Quarry		small quarry on 1926 map or earlier, may be the same as SMR but grid ref is wrong			
IP58			SY 6855 6905	Cave Hole Quarry	Limestone Quarry					
IP59				Butts Quarries	Limestone Quarry					
IP60			SY 6832 6887	Quarry	Limestone Quarry					
IP61			SY 6830 6880	Shoreline quarry	Limestone Quarry					
IP62			SY 6824 6880	Quarry	Limestone Quarry					
IP63			SY 6803 6885	Quarry	Limestone Quarry					
IP64			SY 67606830	Bill Quarries	Limestone Quarry		Working at least in the 1850s (1). Low quarry face, gully and much waste behind stone blocks, also three 'megalithic' shelters of massive stones and a tramway course with sleeper blocks	(1) Monograph: White, W. 1855. A Londoner's Walk to the Land's End		
IP65			SY 6897 7025	Quarry (site)	Limestone Quarry		site			

ACNo	SMR	NMR	Grid Ref	Site Name	Mon Type	Date	Description	Sources	Status	Current record
IP66			SY 6895 7113	Quarry (site)	Limestone Quarry	1926-60	site			
IP67			SY 6945 7125	Quarry (site)	Limestone Quarry	1901-26	site			
IP68			SY 6945 7115	Quarry (site)	Limestone Quarry	1926	site			
IP69					Limestone Quarry					
IP70			SY 6805 6785	Lower Light quarry'	Limestone Quarry					
IP71				Verne Ditch (quarry)	Limestone Quarry		Immense military defensive work which also served as a quarry for Portland breakwater. Same as IP221.11			
IP72	4 001 316 - MWX414	SY67 SE40	SY 6900 7200	Roman quarries	Limestone Quarry	Roman	Exploited for stone in the Roman period (1-2)	(1) Monograph: Taylor C. 1970. Dorset, p165 (2) Monograph: Grinsell, LV. 1958. Archaeology of Wessex. Map 5		
IP73	4 001 326 - MWX424	SY67 SE50	SY 6900 7200	Portland stone quarries	Limestone Quarry	medieval	General description given, full exploitation began in earnest in early C14.			
IP74	4 001 396 - MWX4712		SY 6855 6905 centroid	Unidentified feature	Limestone Quarry	unknown	An unidentified feature, possibly a quarry, visible on a 1940s AP (1)	(1) Digital archive: Anon. 1940. 1940s Aps. AP40_36800E_70000N.tif		
IP75	4 001 345 - MWX4383		SY 6925 7160	Bottom Coombe saw mills	stone saw mills					
IP76			SY 6920 7168	Bottom Coombe saw mills upper yard	stone saw mills					
IP77			SY 69147165	Park stone yard	stone yard		Rough plot of ground on west side of Park Road observed in 1999 (1) is the site of a small stone yard with travelling crane in 1927 (2)	(1) Field observation: P. Stanier 1999 (2) Map: OS 1929		
IP78			SY 6906 7147	saw mills'	stone saw mills	1927	Erected c1903-4 by Hibbs & Bower, sold to Bath & Portland Stone Firms c1930-2 and closed (1). Works on 1926-7 map with crane and travelling crane (2); only a crane remained by 1960 (3) Site now part of gardens at back of properties.	site (1) Andrew, n.d., 25 & 28 (2) Map: OS 1929 (3) Map: OS 1960		
IP79			SY 6860 7226	Wide Street Saw Mills	stone saw mills	1927	Saw mills (stone) with travelling crane on 1926-7 map (1) Named 'Mill' in 1959 (2) Much was open air until Portcrete Ltd built large shed after 1962/63 winter (3)	(1) Map: OS map 1929 (2) Map: OS map 1960 (3) Monograph: Morris, S. 2006, plate 92		
IP80			SY 6918 7273	Easton Lane Saw Mills	stone saw mills	1927	Saw mills (stone) on 1926-7 map (1) Previously a smithy	(1) Map: OS 1929		
IP81			SY 6910 7265	Withies Croft (Easton Lane) Saw Mill	stone saw mills	1889	Saw Mill (stone) in 1889 and 1901 (1) but demolished by 1926-7 (2)	(1) Map: OS 1889 (2) Map: OS 1929		
IP82			SY 6996 7263	Prison saw mills	stone saw mills	1889	saw pit and crane on map			
IP83			SY 6940 7270	Withies Croft saw pit	saw pit	1889	saw pit on map	Map: OS 1889		
IP84			SY 6995 7262	Admiralty Stone Yard	stone yard	1889	Admiralty workshops in 1864, etc			
IP85	WX4377 - MWX4377		SY 68114 73937'	FJ Barnes saw mill	stone saw mills	1872	Steam-powered stone saw mill and works of Portland Stone Co. 1872 next to Portland station, Chiswell, taken over by F.J. Barnes in 1885. Equipment described briefly (1)	site, check grid ref Map: 1929 (1) Monograph: B. Jackson. 1999, 137		



ACNo	SMR	NMR	Grid Ref	Site Name	Mon Type	Date	Description	Sources	Status	Current record
IP86			SY 69457105	Perryfield saw mills	stone saw mills	C20	former stone works of SW Stone Co, now engineering works			
IP87			SY 6910 7265	Easton Lane offices	Building		Stone-built office block. Inscribed stone in south wall reads ' BATH AND PORTLAND STONE FIRMS LTD OFFICES', and stone in west wall reads ' STEWARDS & CO LIMITED STONE MERCETS OFFICES', with 'LATE' added.			
IP88			SY 69147170	Park Road office	Building		Small stone office under slate roof. Wall facing street inscribed: 'THE JOHN PEARCE PORTLAND STONE COMPANY LTD.' Now apparently a dwelling.			
IP89			SY 69197169	Office and stone works	Building		Long stone works building with office block of two storeys at west end. Latter is ivy covered, with slate roof and two chimneys. Where not covered with ivy, external west wall is inscribed: '...AND STONE FIRMS LTD.' Building abuts a much larger and taller stone works. Built between 1900 and 1927.			
IP90			SY 69187160	Office building	Building		Stone-built office block with NW wall inscribed 'THE STONE FIRMS LTD' with a carving of the firm's kivel symbol.			
IP91			SY 6946 7099	Perryfield House	Building		Former offices of SW Stone Co.			
IP92			SY 7015 7250 ?	Prison limekiln	Limekiln	1863	marked on maps of 1863 (1) and 1889 (2)	(1) Map: OS 1864 (2) Map: OS 1889		
IP93			SY 6961 7278	Admiralty Limekiln	Limekiln	1927	Large limekiln of unusual design, most surviving in Feb 2007 (1-2)	(1) Map: OS 1929 (2) Field observation: P. Stanier 7 February 2007		
IP94			SY 69057255	Independent Limekiln	Limekiln	1863	Possible limekiln pot (not named) at end of buildings in 1863	Map: OS 1864		
IP95			SY 6888 7299	Yeates W Limekiln	Limekiln		On 1861 plan (1), outline marked in 1863 (2): 'Limekiln' at Yeates but two are marked, seems to include this (replaced the pair at Yeates NW?) 1889 map (25" part): 'Limekiln' and structure marked 1901 map (25"): 'Limekiln' and structure marked	(1) Map: 1861 plan (2) Map: OS 1864 Map OS 1889 Map OS 1901		
IP96			SY 6891 7300	Yeates E Limekiln	Limekiln	1889	limekiln pot (not named) in 1841, clearly marked in 1861 and 1863. 'Limekiln' at Yeates but two in 1889 map, 'Limekiln' and structure in 1901 disused by 1927; some survives	Map: Tithe 1841 Map OS 1864 Map OS 1889 Map: OS 1901 Map: OS 1929		
IP97			SY 6882 7292	Yeates SW Limekiln	Limekiln		'Limekiln' in 1863 may refer to this one (1) 'Limekiln' and structure in 1889 (2): no longer marked	Map: OS 1864 Map: OS 1889		

ACNo	SMR	NMR	Grid Ref	Site Name	Mon Type	Date	Description	Sources	Status	Current record
IP98			SY 6875 7301	Yeates NW Limekilns	Limekilns		1828 map: pair of limekiln pots clearly marked and named 'Lime Kiln' 1841 map: pair of limekiln pots (not named) clearly marked 1863 map (25"): possible trace of one, but site probably destroyed by tramway cutting			
IP98			SY 6890 7301	Yeates NE Limekiln	Limekiln		1841 map: limekiln pot (not named) clearly marked 1863 map (25"): possible trace			
IP100			SY 6905 7273	Easton Lane Limekiln	Limekiln	1889	Limekiln' in 1889 and 1901 (1 & 2). Stone-walled shed with corrugated iron roof built against front on road side. Pot is filled at the top. Inside (seen in 1992) drawhole is at an angle to the draw arch. '1926' is carved on stone in wall to left of drawhole.(3) The shed at the front has been converted to a workshop.	(1) Map: OS 1889 (2) Map: OS 1901 (3) Stanier, 1993, 48.	Listed II 969-1/1/34 1984	
IP101			SY 69057255	Inmosthay Limekilns	Limekilns (2)	1927	single limekiln in 1927, with second kiln added on south side in 1931. Both worked by Messrs. Milverton until 1959 (1). Part later demolished when wall became dangerous. Large corrugated iron shed in front was recently demolished (1999), revealing both draw arches with horizontal lintels.	(1) Stanier, 1993, 48, and Stanier 1995, 92-93		
IP102			SY 68607070	Avalanche Road Limekiln	Limekiln	1927	Limekiln in 1901 and 1926 (1 & 2). Said to have worked until 1927, when Milvertons started kiln at Inmosthay. Shed (in use) built against front and hiding draw arch area. Top is open, surrounded by remains of a wall; open pot measures c.1.8m diameter (3).	(1) Map: OS 1901 (2) Map: 1929 (3) Stanier, 1993, 48		
IP103	WX3880 - MWX3880		SY 6895 6955	Lime kiln at Lime kiln Cove'	Limekiln	pre-1864	old limekiln' in 1864 (1) place name in 1927 (2) Now site only	(1) Map: OS 1864 (2) Map OS 1929		
IP104			SY 6844 7230	Wide Street Limekilns (4)	Limekilns (4)		bank of four limekilns marked but not named in 1959-60 (1)	(1) Map: OS 1960		
IP105			SY 7010 7255	Grove Stone Yard	Limekiln		on map			
IP106	4 001 253 - MWX3356		SY 6844 7435	Portland Castle	Limekilns (2)	Post-medieval	Watching brief revealed remains of two limekilns etc. (1)	(1) Unpublished document: Stewart Brown Associates. 2001. Portland Castle Archaeological Evaluations, Watching Briefs and Building Recording 1999-2001		
IP107			SY 7000 7280 (top)	Admiralty Incline	Railway incline	1840s	Built to carry quarried stone for breakwater construction; 7ft broad gauge. Incline with Higher, Middle and Lower Drums (1) 1889 map (10.5' part): 'old railway' in 1889 (2) but later refurbished as standard gauge for new works	(1) Monograph: Jackson, BL. 1999. Isle of Portland Railways, vol 1, 63-124 (2) Map: 1889 map (10.5' part)		

ACNo	SMR	NMR	Grid Ref	Site Name	Mon Type	Date	Description	Sources	Status	Current record
IP107.1			SY 6999 7280	Admiralty Incline Higher Drum	Incline drum	1840s	Site of higher winding drum (1)	(1) Map: OS map 1864		
IP107.2			SY 6989 7322	Admiralty Incline Middle Drum	Incline drum	1840s	Site of middle winding drum (1)	(1) Map: OS map 1864		
IP107.3			SY 6989 7363	Admiralty Incline Lower Drum	Incline drum	1840s	Site of lower winding drum (1)	(1) Map: OS map 1864		
IP108			cSY 6980 7260	Admiralty railway branches	Tramways		Branches of Admiralty or breakwater Railway serving quarries	(1) Monograph: Jackson, BL. 1999. Isle of Portland Railways, vol 1, 63-124		
IP109			SY 7001 7278	Admiralty Quarry engine shed and workshops	Engine shed and workshops		Substantial stone buildings at Quarry Head, the top of Admiralty incline, disused but still in good condition (1-2)	(1) Monograph: Jackson, BL. 1999. Isle of Portland Railways, vol 1, 122 (2) Field observation: P. Stanier 7 February 2007		
IP110			SY 6875 255	Fancy Quarry tramway	Tramway	1828	First quarry tramway on any map (1828) named as 'Rail Road' from 'Fancy Quarry' in Wide Street leading into a strip field in Inmosthay, the origin of the Fancy Beach waste tip. (1)	(1) Map: 1828		
IP111		LINEAR 1928	SY 68607293 (Priory Corner) to SY 68607432 (foot of incline) or SY 6872 7445 to SY 68537285	Portland (Merchants') Railway	Railway	1826-1939	Act 1825, 4ft 6in gauge. Horses drew trains of loaded wagons around the contour from Priory Corner to the top of the incline for descent to Castletown Pier. Many tramways branched into Waycroft, King Barrow, Tout, Inmosthay quarries. 1861 plan shows upper branches of Portland Railway including incline and East Drum, and Cottage & Stable (removed 1866 for fort). Reached greatest extent c1889 (1). Reduced to single track to Priory Corner (short sidings and a crane) by 1927 (2). Closed 1939 and rails lifted in 1956.(3) Traces of stone sleeper blocks survive. Other features include massive stones bordering the line, a curved stone-walled cutting at Tillycombe with a milestone 'II'. Site of Priory Corner terminus destroyed during road works. (4)	(1) Map: OS 1889 (2) Map: OS 1929 (3) Monograph: Jackson, BL. 1999. Isle of Portland Railways, vol 1, 15-61 (4) Field observation: P. Stanier 7 February 2007		
IP111.1			SY 68607432 - SY 68887378	Merchants' Incline	Railway		First built in two parts with top and lower winding drums, later replaced by continuous incline with three rails on stone sleeper blocks, a half-way passing place and single top brake drum. Sleeper blocks survive. (1-2)	(1) Monograph: Jackson, BL. 1999. Isle of Portland Railways, vol 1, 15-61 (2) Field observation: P. Stanier 7 February 2007		



ACNo	SMR	NMR	Grid Ref	Site Name	Mon Type	Date	Description	Sources	Status	Current record
IP112			SY 6970 7340 (south part of course)	Verne Construction Railway	Railway	1860s	1863 map (6"): shows line around Verne, ending in two sidings on north west corner (1) Course survives alongside east cliff	(1) Map: OS 1864		
IP113			SY 6905 7032	Coombefield quarry tramway	Tramway		Rails and stone setts of former tramway level crossing over old section of Southwell Road (now by-passed). Two lines of three rails each, with gauge of c.55" (4ft 7in) between the two centre rails. In 1901 the tramway from Coombefield Quarry crossed the road and branched into two waste tips at the cliffs (1). No longer in use by 1926 but one track course runs beneath tipping bridge from another quarry.(2)	(1) Map: OS 1901 (2) Map: OS 1929		
IP114			SY 6770 6830 (start)	Bill quarries tramway	Tramway	c1889-93	Quarry tramway from Bill to Red Crane shipping place; sleeper blocks, cutting and exposed rails near crane. 'Old Tramway' with rails on map of 1902; course only in 1927 (1-4)	(1) Map: OS 1902 (2) OS Map 1929 (3) Monograph: Jackson, BL. 1999. Isle of Portland Railways, vol 1, 135 (4) Field observation:		
IP115	4 001 365 - MWX4402		SY 6894 6991	Tramway	Tramway		marked on OS map in 1891 (1)	(1) Map: OS 1891		
IP116	4 001 384 - MWX452	SY 67 SE 115	SY 6895 7300 centroid or SY 682720 to SY 697740	Portland Quarries 'Station' [should = Tramway]	Tramway		Tramway linking several quarries with the Easton & Church Hope Railway and the Portland Railway (1-3) NAME OF SITE IS WRONG	(1) Bettey, 1970 (2) Map: OS 6in 1903 Dorset 58 NE/SE (3) Monograph: Lucking, J.H. 1968 Railways of Dorset, 56-57		
IP117	4 001 406 - MWX66	LINEAR 1927	SY 6817 7392 to SY 6779 7960	Weymouth & Portland Railway	Railway	1865-	Opened 1865 from Weymouth to Portland Station (SY 6817 7392). Leased jointly by GWR and LSWR, it had mixed gauge.	Monograph: Jackson, BL. 1999. Isle of Portland Railways, vol 2		
IP117.1	4 001 391 - MWX455	SY67SE1 18	SY 68 74 centroid	Portland Station	Railway station	1905	Site of railway station built in 1905 to replace original Portland Station. Closed in 1952 and now a MOD police station (1)	(1) Index: NMR. Unknown. Portland Station: Buildings File. File BF006857	Listed ?	Listed 381908 Dorset S&MR NBR Index No - 6857
IP117.1	4 001 391 B - MDO6596		SY 6886 7436	Dockyard Police Station, Castletown	Police Station	Post-med to 1865	Police station recorded on DCC SMR index (1) Same as IP1917	(1) Index: DCC SMR. To 2003. Former DCC SMR Card Index		
IP117.2	4 001 388 - MWX454	SY67 SE117	SY 6820 7390	Portland Old Station/ Goods Station (Site)	Railway station	1865-1905	Site of railway station on the Weymouth & Portland branch, opened in 1865 and closed in 1905 (1) became Goods Station (2)	(1) Index: NMR. Unknown. Portland Old Station: Buildings File. File BF006856 (2) Map: OS map 1929		Dorset S&MR NBR Index No - 6856
IP117.3			SY 6855 7428	Exchange sidings	Sidings		Site of exchange sidings with Merchants' Railway	Site		
IP117.4			SY 6848 7415	Castle Road bridge	Bridge		Bridge carrying Castle Road over line			

ACNo	SMR	NMR	Grid Ref	Site Name	Mon Type	Date	Description	Sources	Status	Current record
IP118	4 001 409 - MWX69	LINEAR 1930	SY 6928 7333 centroid or SY 69437426 to 69137240	Easton & Church Hope Railway	Railway	1900-65	Easton & Church Hope Railway authorised in 1867 from quarries to Church Hope Cove, but abandoned in 1874. Following new authorisation a line was opened from cSY 6913 7240 to Castletown, joining the Breakwater line at SY 6943 7426. An extension was added to Southwell, terminating at SY 6945 7046. Passenger services withdrawn 1952, line closed 1965. (1-4)	(1) Map: OS 6in 1903 Dorset 58 NE/SE (2) Map: OS 1:10 000. 1978 edition (3) Monograph: St John Thomas, D. 1966. A Regional History of the Railways of Great Britain: The West Country. Vol 1, 148 (4) Monograph: Jackson, BL. 1999. Isle of Portland Railways, vol 2		
IP118.1	4 001 387 - MWX453	SY67 SE116	SY 69037183	Easton Station [site]	Railway Station	1900-65	Station on the Easton & Church Hope Railway, opened 1900, closed to passengers 1952 and entirely in 1965 (1) Site only remains of railway station, engine shed, goods shed and sidings as shown in 1927 (2). Now Lady Head Hall, old people's dwellings. Footbridge at south end, to Bloomfield Terrace, removed but line of path survives.	(1) Index: NMR. Unknown. Easton Station:Building File: File BF006764 (2) Map: OS 1929		Dorset S&MR NBR Index No - 6764
IP118.2			SY 6905 7210	Easton coal yard	Coal Yard		Coal yard and siding north of easton			
IP118.3			SY 69057193	Reforme Street Bridge	Bridge	1900	Iron bridge carrying Reforme Street over former railway cutting of Easton & Church Hope Railway.			
IP118.4			SY 6960 7131	Wakeham bridge	Bridge		Bridge under Wakeham street			
IP118.5			SY 6938 7135	Wakeham quarries bridge	Bridge		Bridge over railway in Wakeham quarries			
IP.118.6			SY 6915 7170	Park Road skew tunnel	Tunnel		Skewed tunnel of branch siding under Park Road to stone works			
IP118.7			SY 6917 7152	Park Road bridge	Bridge		Bridge under Park Road			
IP118.8			SY 6902 7180	Easton Station footbridge	Bridge		Site of footbridge	Map		
IP118.9			SY 6995 7141	Yeolands cliff cutting footbridge	Bridge	1900	Site of footbridge over Yeolands cliff cutting near Rufus Castle (1)	(1) Monograph: Morris, S. 2006. Plate 136.		
IP119			SY 69177152 to SY 69057193	Quarry Tip Siding	Railway		Branch from E&CHR at Wakeham to above Southwell Landslip (1-2) Disused by 1926-7 (3)	(1) Map: OS 1901 (2) Monograph: B. Jackson. 1999, 135 (3) Map OS 1929		
IP120		LINEAR 1929	SY 70167442 to SY 68507415	Breakwater Railway	Railway	1878-	from south ship channel to W&PR			
IP121		SY67 SE118	SY 68 74	Portland station, now Dockyard Police Station, Castletown	Railway station	c1865	Dockyard Police Station, formerly railway station. c 1865.	? check this info	Listed II 969- 1/1/6 1993	NBR Index No. 6857
	4 001 230 - MWX1504		SY 688 744 centroid	Castletown Pier Hard	Hard	1942-44 (at some time)	Falling under Portsmouth Command, the Hard at Castletown Pier was used for the loading of Landing Ships (Tank) for Operation Overlord. Two such vessels were berthed here with further berthing for four Landing Craft (Tank) (1)	(1) Monograph: Dobinson CS. 1996. Twentieth Century Fortifications in England - Operation Overlord. Volume 5. R2		

ACNo	SMR	NMR	Grid Ref	Site Name	Mon Type	Date	Description	Sources	Status	Current record
IP122			SY 6860 7442	Castletown stone shipping places	Quay	?early C19	Quay frontage with cranes served by sidings from Merchants' Railway (1) Disused by 1901 (when pier extended) and covered with buildings by 1927 (2)	(1) Maps: 1828, 1841, 1863, 1889. (2) Map: 1901, 1929		
IP123			SY 6875 7445	Castletown Pier	Pier	C19	stone shipping quay, extended in later 19thC. Large stone blocks in structure.			
IP124			SY 7010 7365 ?	New Pier	Pier	1770-1841	Shown as 'New Pier' on 1770 plan and subsequent maps until 1841. No longer shown in 1863.			
IP125	4 001 329 - MWX4248		SY 70158 73562 centroid	Possible pier/quay (seems to be New Pier??)	Pier?	pre-1841	Possible pier on Tithe map (1)	(1) Map: Portland Tithe map 1841		
IP126			SY 7022 7334	King's Pier	Pier	pre-1710	Important stone shipping pier site, first shown on a map of 1710.			
IP127	4 001 295 - MWX3882		cSY 7048 7283 (SMR says SY 70474 72804)	Folly Pier	Pier	1765-	Site of pier recorded in 1745 as 'Old Pier at present useless being destroy'd by the Sea' (1). A New Pier was built by 1765 (2), recorded on a plan of 1770 as 'Mr Gilbert's Pier Commonly known by Folly.' (3). Named as 'New or Folly Pier' in 1800 (4) and Folly Pier until at least 1901 (5)	(1) Map: 1745 (2) Map: Isaac Taylor map of Dorset 1765 (3) Map: 1770 plan (4) Map: 1800. (5) Map: OS 1901		
IP128		SY77 SW2	SY 70497119	Durdle Pier	Quay	1745-	Partially artificial quay of stone blocks with timber derrick crane now used for launching small fishing boats. Tracks from various stone-working sites in East Weares converge on the site. Recorded as 'Dirtle key' in 1745 (1), 'New Key or Dirtle Pier' in 1765 (2) 'Durtle Pier' served by tracks in 1800 (3), 'Dirdale Pier' in 1811 (4), becoming Durdle Pier in 1863 when there was a crane here (5)	(1) Map: 1745 (2) Map: Isaac Taylor map of Dorset 1765 (3) Map: 1800 (4) Map: 1811 (5) Map: OS 1864		
IP129			SY 70497119	Durdle Pier crane	Crane	1863-	Timber derrick crane now used for launching small fishing boats. Iron hand winch has makers name..... Crane first marked on map suveyed in 1863 (1)	(1) Map: OS 1864		
IP130			cSY 6985 7105	Church Hope North Pier	Pier	1745	'Church hope key' on north side of cove in 1745 (1)	(1) Map: 1745		
IP131				Church Hope North Piers'	Piers (2)	1800-41	Two piers shown here, with another on south side ('Church Hope Piers') in 1800 (1) and 1837 (2). Outlines of two piers shown (not named) at 'Church Ope' in 1841 (3)	(1) Map: 1800 (2) Map: 1837 Map: Tithe map 1841		

ACNo	SMR	NMR	Grid Ref	Site Name	Mon Type	Date	Description	Sources	Status	Current record
IP132	4 001 386 - MWX4524		SY 6972 7092 centroid	Hop or South Pier	Pier		Recorded in 1779 (1) Named 'Hop Pier' seemingly on south side of cove in 1765 (2), 'Hop Pier or South Pier' in 1794 (3), shown here, with two others on north side ('Church Hope Piers') in 1800 and 1837 (4-5). Outline shown (not named) at 'Church Ope' in 1841 (6)	(1) Chart: Sayer & Bennett, 1779. Hydrographic Survey of Isle, Road and Race of Portland with the Shambles (2) Map: Isaac Taylor 1765 (3) Map: 1794 (4) Map: 1800 (5) Map: 1837 (6) Map: Tithe Map 1841		
IP133	WX3881 - MWX3881		SY 6941 7046 centroid	Chene Pier	Pier	1772-	Recorded in 1772 as 'Cheen Pier' (1) and named 'Church Hope Chine Pier' in 1800 (2). The 1863 surveyed 25-inch map (3) shows 'Crane', with 'Chene Pier' written over.	(1) Map: 1772 plan (2) Map: 1800 (3) Map: OS 1864		
IP134			SY 6915 7019	Underbank Pier			shown on 1800 and 1837 maps			
IP135			SY 6910 7000	Freshwater Pier			1863 map marks 'Crane' and in 1901 this is shown below Freshwater Quarries (1-2)	(1) Map: OS 1864 (2) Map: OS 1901		
IP136			SY 6873 6923	Longstone Ope Crane	Crane		Timber derrick, last used for launching boats but now disused. Iron hand winch has broken gears, and name plate (removed by 1999) known to have been Isles Ltd. of Stanningley, near Leeds.			
IP137			SY 68746925	Longstone Ope Crane	Crane		Small iron derrick crane near timber derrick, now removed??? Both cranes appeared disused in 1999. There were boats and a shed here in 1984.			
IP138			SY 6860 6900	Cave Hole Crane	Crane		Timber derrick on cliff edge above a deep cave. Destroyed by vandals in 1998 but since rebuilt. Used as a boat-haul.			
IP139	4 001 336 - MWX4316		SY 6767 6826 centroid	Portland Bill Quay	Quay		Possible quay at Portland Bill marked on 1840 Tithe map			
IP140	4 001 337 - MWX4317		SY 6753 6838	Portland Bill Quay	Quay		Possible quay at Portland Bill marked on 1840 Tithe map			
IP141		SY66 NE5	SY 6796 6848	Portland Bill stone loading quay and Red Crane	Quay and crane		Stone loading quay is scheduled. Derrick mounted on a natural rock shelf in a quarry area. Typical quay cut from rock and used for loading Portland stone. Furniture includes crane built in Glasgow designated as 3 ton. Another rusted piece of metal and timber quay furniture but out of use. (1) 'Sturt Shipping Place' is on map of 1800 (2) and 'Shipping Place' in 1837 (3)	(1) RCHME (2) Map: 1800 (3) Map: 1837	Scheduled DOE 803 28/1/75	
IP142			SY 6796 6848	Red Crane	Crane		Rusted steel derrick mounted on a natural rock shelf beside 'quay' for stone loading. Made in Glasgow designated as 3 ton, with hand winch. Another rusted piece of metal and timber quay furniture but out of use.		Scheduled DOE 803 28/1/75	



ACNo	SMR	NMR	Grid Ref	Site Name	Mon Type	Date	Description	Sources	Status	Current record
IP143			cSY 6790 7185	Gilbert's Pier	Pier		Site of pier shown on 1837 map (1). Unusual for being on west coast	(1) Map: 1837		
IP144			SY 6915 7024	Chene Pumping Station	Waterworks		Built in 1855. 'Chene Pump' with disused tank on shore below, on 1863 map (1) 'Chene Pumping Station (Admiralty Waterworks)' marked with a chimney on 1901 map (2) Marked but not named in 1926 map revision (3)	(1) Map: OS 1864 (2) Map: OS 1901 (3) Map: OS 1929		
IP145	4 001 296 - MWX3883		SY 7048 7268	Folly Pier Waterworks	Waterworks	1863	On map surveyed in 1863 (1)	(1) Map: OS 1864		
IP146	4 001 297 - MWX3884		SY 7041 7273	Reservoir by Folly Pier	Reservoir		Reservoir. But three reservoirs on map surveyed in 1863 (1)	(1) Map: OS 1864		
IP147	4 001 291 - MWX3873		SY 6877 7430	Reservoir at Castletown	Reservoir		Small reservoir on 1843 map, 'Old Reservoir' in 1891			
IP148	4 001 292 - MWX3874		SY 6869 7417	Reservoir at Castletown	Reservoir		Reservoir on 1843 map, but only some outline in 1891			
IP149	4 001 298 - MWX3885		SY 6995 7274	Admiralty Tank	Reservoir		Admiralty tank on 1843 map and 'covered reservoir' in 1891			
IP150	4 001 097 - MDO6529	SY67 SE43	SY 6835 7019 mine is SY 6835 7027	Mound	Mound or Water supply shaft		Unidentified mound described, not on 1841 Tithes Map. An amorphous grass-covered mound of uncertain date and purpose mutilated by construction of a children's playground. Daimeter 35m by 30m, height 2.5m maximum. (1-2) I believe this to be the failed Southwell Shaft of 1893 (3) Shown on 1901 map with 'W' for well (4) Shown on 1926 rev map (5)	(1) Monograph: RCHME (2) Unpublished document: Barton JG. 1980. (3) Monograph: Morris S. 1985. Portland, 106 (4) Map: OS 1901 (5) Map: OS 25-inch 1929		
IP151	new entry		SY 68927289	Verne Yeates Reservoir	Reservoir	1902-	Prominent stone-built covered reservoir, octagonal plan, with small tower on north-east side. Completed in 1902 for Portland's water supply which was pumped here from Upwey. No longer in use.			
IP152			SY	Maiden Well	Cistern	C18?	On north side of High Street, Fortuneswell, remains of boundary wall and well head or cistern. Probably C18. A small square construction in rough squared Portland block, c2m x 1.7m x 1.5m high, with stone slab top; stone block wall behind is the remains of water source before piped water in 1900.		Listed II 969-1/3/115 1993	
IP153			SY 6907 7344	Verne Cistern	Cistern	c1880	On south slope of Verne defences, a stone-vaulted chamber c 2.5m x 3.5m x 3m high entered through a square opening and approached between raking retaining walls. Served a tank lower down the slope.		Listed II 969-1/3/129	

ACNo	SMR	NMR	Grid Ref	Site Name	Mon Type	Date	Description	Sources	Status	Current record
IP154			SY 6812 6898	Lower Lighthouse 1	Lighthouse	1716-89	Established in 1716 and described by Defoe in 1724-6 as two lighthouses set up 'within these few months'. (1) Two 'Lighthouses' shown on the site of the higher light on maps of 1745 and 1765 (2-3), Both lighthouses were coal fired. Lower Lighthouse was rebuilt in 1789. (4)	(1) Monograph: Defoe D. 1724-6, I, 213 (2) Map: 1745 (3) Map: 1765 (4) Monograph: Stanier, P. 2002. Dorset in the Age of Steam, 123.		
IP155			SY 68126898	Lower Lighthouse 2	Lighthouse	1789-1869	Lower Lighthouse was rebuilt in 1789 and the commemorative plaque is now in the present lighthouse at the Bill. (1) 'New Light House' shown in true position on 1800 map. (2) On the 1841 Tithe Map the Lower Lighthouse is shown as sketch, property marked 2348 owned by Trinity House and occupied by Charles Comben; adjacent 2349, 'garden' owned by Trinity House and occupied by Charles Comben. (3) Replaced by a new lighthouse in 1869.	(1) Monograph: Stanier, P. 2002. Dorset in the Age of Steam, 123-4. (2) Map: 1800 (3) Map: Portland Tithe Map 1841		
IP156	WX3879 - MWX3879		SY 6811 6898	Lower Lighthouse 3 or Old Lower Light	Lighthouse	1869-	Built 1869 by Trinity House to replace lighthouse of 1789, at same time as Higher Light, and both with keepers' accommodation alongside. Redundant in 1906 when present lighthouse at the Bill was opened. Became a bird observatory with accommodation in 1962.(1-2)	(1) Monograph: Stanier, P. 2002. Dorset in the Age of Steam, 124. (2) Map: OS 1929	Listed II 969-1/1/164	
IP157			SY 6775 6925	Higher Lighthouse 1	Lighthouse	1716-1869	Established in 1716 and described by Defoe in 1724-6 as two lighthouses set up 'within these few months'. (1) Two 'Lighthouses' shown on the site of the higher light on maps of 1745 and 1765 (2-3), Both lighthouses were coal fired at first. Higher Light had first Argand oil lamps in an English lighthouse fitted in 1788. Rebuilt in 1869. (4)	(1) Monograph: Defoe D. 1724-6, I, 213 (2) Map: 1745 (3) Map: 1765 (4) Monograph: Stanier, P. 2002. Dorset in the Age of Steam, 123-4.		
IP158	4 001 243 - MWX298	SY66 NE191	SY 6775 6925	Higher Lighthouse 2 or Old Higher Light	Lighthouse	1869-	Built 1869 by Trinity House to replace first lighthouse, at same time as Lower Light, and both with keepers' accommodation alongside. Characterised by low tower. Redundant in 1906 when present lighthouse at the Bill was opened. (1) Now a dwelling, it was used as a holiday home for Dr Marie Stopes for about 30 years, and reputed to have been visited by Thomas Hardy. (2)	(1) Monograph: Stanier, P. 2002. Dorset in the Age of Steam, 124. (2) Scheduling record: DOE (HRR). 17 May 1993.	Listed II 969-1/1/163 1978	Listed 381999 DorsetSMR NBR Index Number - 106297

ACNo	SMR	NMR	Grid Ref	Site Name	Mon Type	Date	Description	Sources	Status	Current record
IP159			SY 6774 6834	Portland Bill Lighthouse	Lighthouse	1906-	Built 1905-6 by Trinity House to replace Higher and Lower Lighthouses. Tower is 136ft (41.4m) high. Keepers' accommodation redundant when automated in 1992 and now houses a visitor centre.(1-2) Lighthouse still working and compressors for fog horn survive.	(1) Monograph: Stanier, P. 2002. Dorset in the Age of Steam, 124. (2) Map: OS 1929	Listed II 969-1/1/162 1993	
IP160	4 001 011 - MDO6515		SY 6772 6824	Landmark on Portland Bill	Day Mark	1844-	Three-sided stone obelisk day mark 30ft high inscribed 'TH 1844', erected by Trinity House on the very tip of the Bill. (1) There was a 60ft high beacon here in 1903 prior to building the lighthouse (2)	(1) Monograph: RCHME. 1970, II, pt 2, 253 (2) Chart: Admiralty. 1903. Straight Point to Portland	Listed II 969-1/1/165	
IP161	4 001 364 - MWX4401		SY 6777 6906	Lloyd's Signal Station	Signalling Structure		A Lloyd's signalling station and surrounding flagstaffs is marked on the second edition OS map. (1) Marked but not named in 1926 (2) Now 'Lloyds Cottage' and extended.	(1) Map: OS 1891 (2) Map: OS 1929		
IP162	4 001 331 - MWX4250		SY 6922 7391	Verne Signal Station	Signal Station		Signal station and associated barracks marked on 1841 Tithe Map. The barracks are c30m SSW of the signal station. (1) 'Verne Signal Station' in 1710 (2), buildings and flagstaff in 1863 (3)	(1) Map: 1841 Tithe Map (2) Map: 1710 (3) Map: OS 6ins map 1864		
IP163			cSY 6770 6920	Bill Signal House	Signal Station		Also shown in an Upham picture 'The Higher and Lower lighthouses' (1). 1800 map shows 'Signal House' near higher or 'Old Light House' (2) and in 1828 it is in an enclosure (3). On the Tithe Map of 1841 the property marked 2347 is a 'garden' owned by Trinity House and occupied by Christopher Comben, the upper lighthouse keeper. (4)	(1) Upham (2) Map: 1800 (3) Map 1828 (4) Map: Portland Tithe Map 1841		
IP164			SY 6925 7390	Grove Signal	Signal station		The Flag for Signals' in 1710 (1), 'Flagstaff' in 1863 (2)	(1) Map: 1710 (2) Map: OS 6ins map 1864		
IP165	4 001 330 - MWX425	SY67 SE54	SY 6910 7130	Windmill stumps	Windmill	Post-medieval	These are the North and South Windmills, first shown on a map of 1626 by William Simplon, later on a map of 1710 and all thereafter		Listed II	
IP166	4 001 012 B - MDO6517		SY 6907 7128	Easton'	Windmill	Post-medieval	No description but probably the North windmill. THE GRID REF IS WRONG		Listed	
IP166	DO 13228 - MDO 13228		SY 6907 7128	Windmill at NGR 69077128, Easton'	Windmill	Undated	No description but the North windmill. THE GRID REF IS WRONG		Listed II	Listed Building 381891

ACNo	SMR	NMR	Grid Ref	Site Name	Mon Type	Date	Description	Sources	Status	Current record
IP166	4 001 013 A - MDO6518	SY67 SE108	SY 6909 7140	North Windmill	Windmill Corn Mill	C17-	Disused tower, roofless. Probably C17. First shown on a map of 1626 by William Simplon, later on a map of 1710 and all thereafter	many refs	Listed II 969-1/4/27 1978	Listed Building 381891 Dorset S&MR NBR Index Number 2051
IP167	DO 13229 - MDO 13229		SY 6908 7138	Windmill at NGR 69077128, Easton'	Windmill	Undated	No description but the South windmill. THE GRID REF IN THE NAME IS WRONG		Listed II	Listed Building 381890
IP167	4 001 013 B - MDO6519	SY67 SE108	SY 6919 7129	South Windmill	Windmill Corn Mill	C17-	Disused tower, roofless. Probably C17. First shown on a map of 1626 by William Simplon, later on a map of 1710 and all thereafter	many refs	Listed II 969-1/4/26 1978	Listed Building 381890 Dorset S&MR NBR Index Number 2016
IP168			SY 7028 7217	Ventilator shaft	sewer ventilator shaft	c1870	Ventilator to sewer system. c 1870. Portland ashlar. Octagonal shaft on high base and pedestal, c 7.5m high. In garden of former Governor's house.		Listed II 969-1/1/151 1978	
IP169			SY 7033 7237	Ventilator shaft	sewer ventilator shaft	c1870	Ventilator to sewer system. c 1870. Portland ashlar. Octagonal shaft on high base and pedestal, c 7.5m high. On cliff edge.		Listed II 969-1/1/152 1978	
IP170			SY 7037 7216	Ventilator shaft	sewer ventilator shaft	c1870	Ventilator to sewer system. c 1870. Portland ashlar. Octagonal shaft on high base and pedestal, c 7.5m high. Set to the cliff edge and one of 3 remaining shafts (qqv).		Listed II 969-1/1/153 1978	
IP171			cSY 7055 7225	Ventilator shaft	sewer ventilator shaft	c1870	Ventilator to sewer system. c 1870. Round shaft in Portland ashlar, down in East Weares.			
IP172			SY	Store or workshop at 46 Chiswell	Workshop	C19 ?	Workshop adjoining No 46 (not listed), C19, possibly earlier. A rare survival of this building type in an area of later rebuilding.		Listed II 969-1/3/15 1975	
IP173			SY 6783 6848	Portland Bill Fisherman's Hut	Fisherman's Hut	C19	Fisherman's Hut, C19. Squared coursed block or rubble, felt roofs. In two units, forming one rectangular unit parallel with coast. To SW, a small single-cell one-storey building with very large stone block front. Some very large quoin stones set low. A rare survival.		Listed II 969-1/1/161 1993	
IP174			SY	Easton Square fish house	Fish House	C19	Warehouse or fish house behind 31 Easton Square. Early to mid C19. Rubble with good dressed quoins, slate roof. Stack could be for smoking chamber, but interior not accessible.		Listed II 969-1/4/38 1993	

ACNo	SMR	NMR	Grid Ref	Site Name	Mon Type	Date	Description	Sources	Status	Current record
IP175			SY	Fortuneswell telephone kiosk	Telephone kiosk	C20	K6 telephone kiosk opposite 63 Mallams, Fortuneswell. Designed 1935 by Sir Giles Gilbert Scott.		Listed II 969-1/3/126 1993	
IP176			SY 7005 7245	The Grove pillar box	Pillar Box	C19	Set to left inside arch of Prison Gatehouse is Portland stone podium containing a VR pillar box.		Listed with gatehouse 969-1/1/144 1978	
IP177			SY 6919 7180	Easton Square clock tower	Clock tower	1907	Clock tower of 1907. Hammer-dressed stone blocks with ashlar dressings; lead spire. Prominent.		Listed II 969-1/4/202 1993	
IP178	4 001 010 - MDO6514	SY77 SW8	SY 703 723	HM Young Offender Institution, The Grove	Prison		Long description. Includes gatehouse and quarry area levelled and converted to recreation ground		Listed II	NBR 90954
IP179			SY	Governor's House	Prison governor's house	c1850	Governor's House, 102 The Grove with front boundary wall, c 1850.		Listed II 969-1/1/154 1993	
IP180			SY	HM Young Offender Institution, E Hall	Prison cell block	c1848	Prison cell block with attached punishment block. Probably 1848. Coursed and squared dressed Portland block, slate roof.		Listed II 969-1/1/147 1993	
IP181			SY	HM Prison sentry box	Prison sentry box	c1848	Sentry box with gate pier to former prison work ground. Probably c 1848.		Listed II 969-1/1/143 1978	
IP182			SY	HM Young Offender Institution, Grenville and Nelson wings	Prison cell block	1898	East cell block, 1898. Fine coursed Portland ashlar, some rock-faced masonry, slate roofs. One of two parallel blocks.		Listed II 969-1/1/145 1993	
IP183			SY	HM Young Offender Institution boundary walls	Prison boundary walls	1848 and later	Boundary walls to N and E sides of prison. 1848 and later. Portland stone ashlar or coursed stone.		Listed II 969-1/1/149 1993	
IP184				HM Young Offender Institution boundary wall	Prison boundary wall	1848	Lofty boundary wall to W of squared dressed Portland block, runs from north to south and returns towards Gatehouse, total length c 520m.		Listed II 969-1/1/141 1993	
IP185			SY	HM Young Offender Institution, Overseer's Hut	Prison Overseer's Hut	c1848	Overseer's Hut with inclines, c 1848. Portland stone ashlar, including roof.		Listed II 969-1/1/148 1993	
IP186			SY	HM Young Offender Institution, Raleigh, Drake & Benbow wings	Prison cell block	1898	West cell block, 1898. Fine coursed Portland ashlar, some rock-faced masonry, slate roofs. One of two parallel blocks.		Listed II 969-1/1/146 1993	
IP187			SY 7005 7245	HM Young Offenders Institution The Grove Gatehouse, with VR letter box.	Prison Gatehouse	1848	Prison gatehouse with Royal Arms and 1848 date. Not now used. Set to left inside arch is Portland stone podium containing a VR pillar box.		Listed II 969-1/1/144 1978	

ACNo	SMR	NMR	Grid Ref	Site Name	Mon Type	Date	Description	Sources	Status	Current record
IP188			cSY 7005 7250	Alma Terrace, 1-12 Grove Road	Prison warders' houses	1854	A long terrace, formerly six large houses, now in 12 occupations. Restored with great sensitivity. The terrace formerly continued with a further six units, now demolished.		Listed II 969-1/1/138 1978	
IP189	4 001 137 - MWX3599		SY 6950 7153	Converted dovecote at Wakeham	Dovecote	C17 ?	Former dovecote, later privy, now store. c5m WSW of 106 Wakeham. Possibly C17. Squared and coursed Portland block, stone slab roof. Unusual and rare survival.		Listed II 969-1/4/69 1993	
IP189	4 001 137 A - MDO6590		SY 6950 7153	Wakeham dovecote	Dovecote	C17?	Extant building		Listed	
IP189	4 001 133 - MDO6585		SY 695 714	Wakeham dovecote	Dovecote	C17?	No description given		Listed	
IP190	4 001 137 B - MDO6591		SY 6950 7153	Privy house, Wakeham	Privy House		No description given		Listed	
IP191			SY 6886 7436	Dockyard Police Station, Castletown	Dockyard Police Station	c1865	Dockyard Police Station, formerly railway station. c 1865. Same as IP 117.1?		Listed II 969-1/1/6 1993	
IP192	4 001 136 - MDO6589		SY 6843 7431	Castle Road boundary stone	Boundary Stone	mid-late C19	Stone adjoining boundary wall to the Castle. 'WD BOUNDARY' incised on S face, WD arrow on E and W faces; identifying number probably on lower part.		Listed II 969-1/1/5 1993	
IP193	4 001 134 - MDO6586		SY 6446 7758	Chesil Bank boundary stone	Boundary Stone	pre-1788	Boundary marker between Abbotsbury and Portland parishes, the only one needed for Portland. Predates 1788, when Robert Attwooll cut the inscription.		Listed II 969-1/2/13 1978	
IP194			SY 6873 7327	Fortuneswell boundary stone	Boundary Stone	C19	Small round-topped stone, partly buried. NW side has WD arrow and WD in letters, SW has numbers 33 under defaced area .		Listed II 969-1/3/100 1993	
IP195			SY 6891 7322	New Road boundary stones	Boundary Stones	C19	Two boundary markers at junction of New Road and Old Hill. C19. NE stone has upper part defaced, with '31' below. The other stone has '30' and This stone removed 3'6" East'.		Listed II 969-1/3/127 1993	
IP196			SY 7035 7208	The Grove boundary stone	Boundary Stone	c1870	Boundary stone inscribed on S side with WD arrow, an anchor, and '74'.		Listed II 969-1/1/150 1993	
IP197			SY	Grove boundary wall and gate piers from Vicarage to Alma Tce	Boundary Stone	c1875	Boundary stone built into the wall at its W end, facing Grove Road, bearing WD arrow above an anchor and '70'.		Listed II 969-1/1/140 1978	
IP198			SY 7035 7208	The Grove boundary stone	Boundary Stone		Boundary stone with 'DCP' and arrow on N side. Close to '74' boundary stone.			
IP199			SY 6975 7328	Nicodemus Knob' boundary stone	Boundary Stone		Boundary stone inscribed on W side with WD arrow, an anchor, and '61'. (1)	(1) Field observation: P.Stanier February 2007		
IP200			SY 6922 7310	Kings Barrow boundary stone	Boundary Stone		Boundary stone inscribed on W side with WD and arrow.			
IP201	DO 13231 - MDO 13231		SY 6962 7246	Grove Road boundary stone	Boundary Stone				Listed II 969-1/1/132	

ACNo	SMR	NMR	Grid Ref	Site Name	Mon Type	Date	Description	Sources	Status	Current record
IP201	WX4372 - MWX4372		SY 6687 7558	Stone	Stone	Unknown	Stone marked on second edition OS map (1)	(1) Map: OS map 1891		
IP202			SY 6888 7200	St. George's Centre, Reforme	School	1857	Former St Georges County Infant School including Hall and Wall to road, now community information and activity centre.		Listed II 969-1/4/57 1978	
IP203			SY 6888 7200	St. George's Centre, Reforme	School Assembly Hall	c1880	Assembly Hall of St George's County Infant School, now community hall.		Listed II 69-1/4/58 1978	
IP204			SY 6888 7200	St. George's Centre, Reforme	School boundary walls	1857?	St George's County Infant School boundary walls. Probably 1857, subsequently modified. Included in listing for group value.		Listed II 969-1/4/59 1978	
IP205			SY 6997 7265	Grove County Primary School	School	1872	Grove County Infant School, opened 2 September 1872. Probably from the office of Capt. Edmund du Cane, RE, designer of St. Peter's Church. Portland ashlar, slate roofs. A richly detailed and confidently handled Romanesque Revival building.		Listed II 969-1/1/137 1978	
IP206			SY 6997 7265	Grove School House	School house	c1870	School House with rear boundary wall, former house of Assistant Governor, Portland Prison. c 1870, possibly from office of Capt. Du Cane, RE. Portland ashlar, slate roof. Compact L-plan. An important unit in a good group.		Listed II 969-1/1/136 1978	
IP207			SY 6912 7171	Easton Methodist chapel	Chapel		Methodist chapel (Wesleyan) in 1863			
IP208			SY 69137188	Easton Methodist Church, Easton Square	Church	1906	Easton Methodist Church with boundary walls, built 1906 to designs of Latrobe and Weston of Bristol; Wakeham Bros of Plymouth, builders. Rock-faced snecked Portland stone with ashlar dressings, or rubble, plain tile roof. Twin-towered E front.		Listed II 969-1/4/39 1993	
IP209	4 001 001 - MWX423	SY67 SE49	SY 6865 7200	Church of St George, Reforme	Church	1754	Extant building, founded 1754 and consecrated 1766, redundant since completion of All Saints Church in 1917. Used for a while as mortuary. Built by Thomas Gilbert.	RCHM, II, pt2, 247-9	Listed I	NBR Index No. 51584
IP209	4 001 001 A - MDO6498	SY67 SE49	SY 6865 7200	Church of St George, Reforme	Church	1754	Extant building	RCHM, II, pt2, 247-9	Listed I	NBR Index No. 51584
IP209	4 001 001 B - MDO6499	SY67 SE49	SY 6865 7200	Church of St George, Reforme	Mortuary	1754	Extant building	RCHM, II, pt2, 247-9	Listed	
IP210	4 001 324 - MWX422	SY67 SE48	SY 6988 7258	Church of St Peter, Grove	Church	1872	Former Anglican parish church, now chapel to Young Offender Institution. Consecrated August 1872. Designed by Capt. Du Cane, RE. (1)	(1) Pevsner, N. & Newman J. 1972, Buildings of England: Pevsner N and Newman J: Dorset, 343	Listed II* 969-1/1/135 1978	

ACNo	SMR	NMR	Grid Ref	Site Name	Mon Type	Date	Description	Sources	Status	Current record
IP211	4 001 005 - MDO6503		SY 6886 7004	Southwell Methodist Chapel	Chapel	1849	Small Methodist chapel. Dated 1849, gable to street with later inscription 'Southwell Methodist Church 1849'. A modest but complete manifestation of the importance which Methodism played in the Island's social history.(1)	(1) Monograph: RCHM.1970. 250	Listed II 969-1/1/169 1993	
IP212			SY 6850 7115	Weston Methodist chapel	Chapel		Meth. Cap.' on 1901 map and 'WM Church' on 1927 map			
IP213			SY 6870 7095	Weston Methodist chapel	Chapel		Meth. Cap.' on 1901 map and 'Prim. Meth. Church' on 1927 map			
IP214				Ranter's Lodge, Chiswell	Chapel	Late C18 or early C19	Also known as The Dead House. Small cottage with outbuilding, altered for use as Methodist chapel. Large squared coursed blocks.		Listed II 969-1/3/21 1987	
IP215			SY 694 717	Wakeham chapel	Chapel		Zion chapel (Bible Christian)' in 1863. 'UM Church' on 1926-7 map on edge of Bottom Coombe Quarries			
IP216			SY	Conjuror's Lodge, Clements Lane, Chiswell	Workshop and store	Late C18 or early C19	Workshop and store. Squared and dressed stone front, rubble returns, corrugated asbestos-cement roof. A long narrow building in two storeys set gable to street. Reputed used by a breakaway C19 Dissenting sect.		Listed II 969-1/3/22 1993	
IP217	4 001 004 - MDO6502		SY 6856 7361	Church of St John the Baptist, Fortuneswell	Church	1839-40	Church of St John the Baptist, built 1839-40 to design of Edward Monney with later chancel and organ chamber and a modern vestry.(1) SMR lists many components	(1) Monograph: RCHME. 1970, II, pt 2, 249-50		in conservation area
IP218	4 001 117 - MDO6569	SY67 SE122	SY 6945 7325	Verne Quarry High Angle Battery	Battery	1892	Concrete and stone battery for adapted guns, with magazines, tramways etc, restored 1984-5	Serial: PDNHAS, 106, 1984, 126	Listed II	NBR Index No. 108189
IP219	4 001 319 - MWX419	SY67 SE45	SY 6944 7504 or SY 6944 7405	East Weare Battery	Coastal battery	c1870	Disused gun emplacement. c1870. Portland stone, some concrete and iron. Remains of 3 platforms plus magazine.		Listed II 969-1/1/197 1993 Scheduled DO 781	
IP220	4 001 169 - MWX1383		SY 6980 7360	Verne Quarry Battery	Coastal battery	1940-41	Remains of gun emplacements and original buildings, but large number of modern buildings in area.	Digital archive: CBA Defence of Britain Project		
IP221	4 001 124 - MDO6577	SY67 SE44	SY 693 739	Verne Citadel	Fort	1860-81	Extensive description, lists governor's house, four bridges, blockhouse to south of north gate, gymnasium, north gate gatehouse, H plan of two storeys, chapel and blacksmith's shop		Listed II NBR 93953 Scheduled DO 780	
IP221.1			SY 6905 7388	Verne Citadel, North entrance	Entrance	1880	Grand entrance to former military citadel, now prison. Dated 1880, possibly from the office of Capt. E Crossman, RE, general designer of The Citadel. Portland ashlar.		Listed II* 969-1/3/172 1993	



ACNo	SMR	NMR	Grid Ref	Site Name	Mon Type	Date	Description	Sources	Status	Current record
IP221.2			SY 6933 7340	Verne Citadel, South entrance	Entrance	1881	Gatehouse to citadel, now prison. Portland ashlar, with long narrow entrance corridor. Entrance arch has 'VR 1881', approached over C20 concrete bridge. The whole is roofed in turf, and runs back to the SW casemates. Very dramatically set above the S and SE Ditches.		Listed II* 969-1/3/173 1993	
IP221.3			SY 6930 7345	Verne Citadel, SW and SE casemates	Casemates	c1860	SW and SE Military casemates, rusticated Portland ashlar, turf and grass roof.		Listed II* 969-1/3/175 1993	
IP221.4			SY 6905 7388	Verne Citadel, railings at approach to North Entrance	Railings	c1880	Robust railings on east side of road edge at approach to The Citadel North Entrance. Run of c 130m, cast iron. Listed for group value.		Listed II 969-1/3/171 1993	
IP221.5			SY	Verne Citadel blacksmith's shop	Blacksmith's Shop	c1875	Former racquets court, now prison blacksmith' shop. c 1875. Probably by Capt. W. Crossman, RE.		Listed II 969-1/3/174 1978	
IP221.6			SY	Verne Citadel, prison chapel	Officers' Mess	c1865	Prison chapel, formerly Officers' Mess. Portland stone with roach stone rustication, slate roof.		Listed II 969-1/3/176 1978	
IP221.7			SY	Verne Citadel, Governor's House	Governor's House	c1870	Detached house, formerly for Governor of the Verne Citadel. c 1870, by Col. Cox, RE. Ashlar, slate roof.		Listed II 969-1/3/177 1978	
IP221.8			SY	Verne Citadel, Gymnasium	Gymnasium	c1865	Prison gymnasium. c1865, probably by Capt. W. Crossman, RE. Portland stone, mostly rusticated, single-storey rectangular building.		Listed II 969-1/3/178 1978	
IP221.9			SY	Verne Citadel, Officers' Block B	Officers' Accommodation Block	c1865	Officers' accommodation, now part of prison. c1865, possibly by Capt. W. Crossman, RE.		Listed II 969-1/3/179 1978	
IP221.10			SY	Verne Citadel, Reception Centre	Reception Centre	c1865	Prison Reception Centre. c 1865, possibly by Capt. W. Crossman, RE.		Listed II 969-1/3/180 1993	
IP221.11			SY	Verne Citadel Ditch (quarry)	Defensive ditch	1860-81	Immense military defensive work which also served as a quarry for Portland breakwater. Same as IP71			
IP222			SY 6860 7290	Priory Corner crane	Crane	C19	Timber derrick with hand winch, restored. Formerly stood at Suckthumb Quarry (1). Dismantled and re-erected in 1997 after road alterations near Priory Corner.(2)	(1) Monograph: Stanier, P. 1989. Dorset's Industrial Heritage, p.31: photograph of Suckthumb Quarry, derelict timber hand crane, 1989 by Peter Trim (2) Monograph: Morris, S.J. 2006, plates 63-65		
IP223	4 001405 - MWX516	SY77 SW4	SY 7022 7438 centroid	Portland Inner Breakwater	Breakwater	1849-72	Long description, notes watching brief record of timbers for construction staging. 1700ft long		Listed II	
IP223	4 001 009 A - MDO6507	SY77 SW4	SY 69767427 to 70727447 or SY 6988 7435 centroid	Inner Breakwater	Breakwater		1700ft long		Listed II	

ACNo	SMR	NMR	Grid Ref	Site Name	Mon Type	Date	Description	Sources	Status	Current record
IP223	4 001 009 B - MDO6508	SY77 SW4	SY 69767427 to 70727447 or SY 6988 7435 centroid	Inner Breakwater	Breakwater		1700ft long		Listed II	
IP224	4 001 009 C - MDO6509	SY77 SW3	SY 70327452 to SY 70757620 or SY 7049 7476 centroid	Outer Breakwater	Breakwater	1872	6400ft long		Listed II	
IP224	4 001 009 D - MDO6510	SY77 SW3	SY 7071 7563 centroid	Outer Breakwater	Breakwater	1872			Listed II	
IP225	4 001 009 E - MDO6511		SY 7026 7658 centroid	North-Eastern Breakwater	Breakwater				Listed	
IP225	4 001 009 F - MDO6512		SY 6978 7706 centroid	North-Eastern Breakwater	Breakwater				Listed	
IP225	4 001 009 G - MDO6513		SY 6949 7747 centroid	North-Eastern Breakwater	Breakwater				Listed	
IP226			SY 7051 7632	Breakwater Lighthouse	Lighthouse	1905	Iron lighthouse at south end of NE Breakwater commissioned on 14 March 1905 (1) or March 1908 (2)	(1) Legg, 2006, 106 (2) Jackson, 1999, 95		
IP227		SY67 SE74	SY	Remains of dolphin	Mooring post		remains of dolphin, possible hazard to shipping			
IP228		SY67 SE101	SY	Remains of dolphin	Mooring post		remains of dolphin, possible hazard to shipping			
IP229	4 001 339 - MWX435	SY67 SE64	SY 6792 7163	Blacknor Battery	Coastal battery	1870s	Intended to cover West Bay with 9-inch RML guns. 6-inch BL guns installed in 1890s. Remained in use until WW2. (1) Two gun emplacements, base for CASL remains	(1) Monograph: Hogg IV. 1974. Coastal Defences of England & Wales, p229-230		
IP229	4 001 160 - MWX1374	SY67 SE64	SY 6794 7163	Blacknor Fort	Coastal battery	recommissioned 1939-40	Intended to cover West Bay with 9-inch RML guns. 6-inch BL guns installed in 1890s. Remained in use until WW2. SAME SITE AS SMR 4 001 339 - MWX435	Digital archive: CBA. 1985. Defence of Britain Project		
IP230	4 001 172 - MWX1386	SY67 SE162	SY 6785 7150	Blacknor fort gun emplacement	Gun emplacement	1940-1	WW2 gun emplacement south of Blacknor fort for 15lb field guns to protect torpedo factory and oil tanks	Digital archive: CBA. 1985. Defence of Britain Project		
IP231	4 001 173 - MWX1387F	SY67 SE165	SY 6794 7171	Blacknor fort gun emplacement	Gun emplacement	1940-1	WW2 gun emplacement north of Blacknor fort for 15lb field guns to protect torpedo factory and oil tanks	Digital archive: CBA. 1985. Defence of Britain Project		
IP232	4 001 158 - MWX1372	SY67 SE164	SY 6785 7151	Blacknor fort observation post	Coastal Battery Observation Post	1940-1	WW2 coast battery observation post of concrete and iron south of Blacknor Fort	Digital archive: CBA. 1985. Defence of Britain Project		
IP233	4 001 153 - MWX1367	SY67 SE166	SY 6985 7399	Balaclava Bay searchlight	Coast Artillery Searchlight	1940-41	WW2 coast artillery searchlight, brick, concrete and iron, near Admiralty/Research Establishment	Digital archive: CBA. 1985. Defence of Britain Project		
IP234	4 001 154 - MWX1368		SY 6989 7390	Balaclava Bay searchlight	Coast Artillery Searchlight	1940-41	WW2 coast artillery searchlight, brick, concrete and iron, at East Weare, Balaclava Bay	Digital archive: CBA. 1985. Defence of Britain Project		
IP235	4 001 151 - MWX1365		SY 6944 7405	Coast artillery battery, Fortuneswell	Coast artillery battery	1940-41	WW2 coast artillery battery.	Digital archive: CBA. 1985. Defence of Britain Project		
IP236	4 001 150 - MWX1364		SY 6846 7436	Coast artillery battery at Portland Castle	Coast artillery battery	1940-41	WW2 coast artillery battery at Portland Castle.	Digital archive: CBA. 1985. Defence of Britain Project		

ACNo	SMR	NMR	Grid Ref	Site Name	Mon Type	Date	Description	Sources	Status	Current record
IP237	4 001 167 - MWX1381	SY67 SE174	SY 6930 7370	Coastal fortification or battery at Verne Citadel	Coastal battery	1939-40	WW2, unclear function, includes hospital and radar station	Digital archive: CBA. 1985. Defence of Britain Project		
IP238	4 001 201 - MWX1420	SY67 SE168	SY 6755 7466	Yarnold Sanger pillbox	Pillbox	1940-1	WW2 pillbox on causeway	Digital archive: CBA. 1985. Defence of Britain Project		
IP239	4 001 202 - MWX1421	SY67 SE169	SY 6790 7430	Yarnold Sanger pillbox	Pillbox	1940-1	WW2 pillbox on causeway	Digital archive: CBA. 1985. Defence of Britain Project		
IP240	4 001 203 - MWX1422	SY67 SE170	SY 6843 7429	Yarnold Sanger pillbox	Pillbox	1940-1	WW2 pillbox on causeway	Digital archive: CBA. 1985. Defence of Britain Project		
IP241	4 001 205 - MWX1479	SY67 SE171	SY 6991 7315	Yarnold Sanger pillbox	Pillbox	1940-1	WW2 pillbox on causeway	Digital archive: CBA. 1985. Defence of Britain Project		
IP242	4 001 152 - MWX1366	SY67 SE133	SY 6961 7394	East Weare Camp	Coast artillery battery	1940-41	Coast battery, much altered	Digital archive: CBA. 1985. Defence of Britain Project		
IP243	4 001 206 - MWX1480	SY67 SE131	SY 6962 7392	East Weare Camp pillbox	Pillbox	1940-1	WW2 pillbox	Digital archive: CBA. 1985. Defence of Britain Project		
IP244	4 001 168 - MWX1382	SY67 SE172	SY 6977 7371	East Weare Battery	Coast battery	1940-1	Coastal artillery battery at East Weare Camp with gun emplacements and magazine	Digital archive: CBA. 1985. Defence of Britain Project		
IP245		SY67 SE173	SY 6980 7360	East Weare Camp battery	Coast battery	1940-1	Coastal artillery battery at East Weare Camp with gun emplacements. Poor condition	Digital archive: CBA. 1985. Defence of Britain Project		
IP246	4 001 135 A - MDO6587		SY 6874 7465	Phoenix Caisson	Phoenix Caisson	1944	Phoenix unit		Listed	
IP246	4 001 135 B - MDO6588	SY67 SE120	SY 6873 7468	Two Phoenix units	Wreck	1944	Two Phoenix units for Mulberry harbour. SMR has information		Listed II	NBR 108055
IP248	4 001 393 - MWX458	SY67 SE121	SY 6850 7310	Chesil Cove beach huts	Beach huts	Modern	Group on west side of Chesil Cove, essentially garden sheds			NBR 108056
IP249		SY67 SE123	SY 6957 7335	Site of Rotor Early Warning Radar Station		1950-1			Scheduled No.35242	
IP250		SY67 SE125	SY 6875 7437	Custom House air raid wardens post						
IP251	4 001 187 - MWX1401	SY67 SE147	SY 6965 7353	East Weare Batteries pillbox	Pillbox	1940-1	WW2 pillbox, one of 6 around East Weares camp	Digital archive: CBA. 1985. Defence of Britain Project		
IP252	4 001 188 - MWX1402	SY67 SE148	SY 6975 7353	East Weare Batteries pillbox	Pillbox	1940-1	WW2 pillbox, one of 6 around East Weares camp	Digital archive: CBA. 1985. Defence of Britain Project		
IP253	4 001 189 - MWX1403	SY67 SE149	SY 6987 7353	East Weare Batteries pillbox	Pillbox	1940-1	WW2 pillbox, one of 6 around East Weares camp	Digital archive: CBA. 1985. Defence of Britain Project		
IP254	4 001 191 - MWX1405	SY67 SE150	SY 6984 7366	East Weare Batteries pillbox	Pillbox	1940-1	WW2 pillbox, one of 6 around East Weares camp	Digital archive: CBA. 1985. Defence of Britain Project		
IP255	4 001 193 - MWX1407	SY67 SE151	SY 6982 7392	East Weare Batteries pillbox	Pillbox	1940-1	WW2 pillbox, one of 6 around East Weares camp	Digital archive: CBA. 1985. Defence of Britain Project		
IP256	4 001 192 - MWX1406	SY67 SE130	SY 6956 7389	East Weare Batteries pillbox	Pillbox	1940-1	WW2 pillbox, one of 6 around East Weares camp, part demolished	Digital archive: CBA. 1985. Defence of Britain Project		
IP257	4 001 194 - MWX1408	SY67 SE152	SY 6992 7335	Upper Osprey pillbox	Pillbox	1940-1	WW2 pillbox	Digital archive: CBA. 1985. Defence of Britain Project		
IP258	4 001 195 - MWX1409	SY77 SW18	SY 7025 7263	Firing range pillbox	Pillbox	1940-1	WW2 pillbox south of naval firing range, possibly six-sided	Digital archive: CBA. 1985. Defence of Britain Project		
IP259	4 001 196 - MWX1410	SY77 SW19	SY 7037 7263	Firing range pillbox	Pillbox	1940-1	WW2 pillbox south of naval firing range, six- sided	Digital archive: CBA. 1985. Defence of Britain Project		

ACNo	SMR	NMR	Grid Ref	Site Name	Mon Type	Date	Description	Sources	Status	Current record
IP260	4 001 197 - MWX1411	SY77 SW20	SY 7047 7275 or SY 7049 7276	Folly Pier pillbox	Pillbox	1940-1	WW2 pillbox north of Folly Pier Waterworks, near shoreline. Six sided	Digital archive: CBA. 1985. Defence of Britain Project		
IP261	4 001 198 - MWX1412	SY77 SW21	SY 7036 7164	Penn's Weare pillbox	Pillbox	1940-1	Camouflaged pillbox south of Durdle Pier, one of two	Digital archive: CBA. 1985. Defence of Britain Project		
IP262	4 001 199 - MWX1413	SY77 SW22	SY 7046 7162	Penn's Weare pillbox	Pillbox	1940-1	Camouflaged pillbox south of Durdle Pier, one of two	Digital archive: CBA. 1985. Defence of Britain Project		
IP263		SY67 SE134	SY 6797 7415	Pillbox	Pillbox		Possible WW2 or Cold War Narcon-style pillbox			
IP264		SY67 SE136	SY 6760 7460	Pillbox	Pillbox		Possible WW2 or Cold War Narcon-style pillbox			
IP265		SY67 SE135	SY 6821 7391	Pillbox	Pillbox		Possible WW2 or Cold War Narcon-style pillbox			
IP266	4 001 270 - MWX3418		SY 701 729	East Weares Rifle Range	Firing Range	c1900	Description includes: Rifle range built between 1889 and 1903 and by 1920s a stop butt had been built.			
IP267	4 001 342 - MWX4380		SY 7012 7350 centroid	Rifle and revolver range	Firing Range		Marked on second edition OS map, 300 yards long with targets (1)	(1) Map: OS map 1891		
IP268	WX4373 - MWX4373		SY 6670 7542	Old Rifle Range	Firing Range		Marked on second edition OS map, with Old Butts and in 100 yard increments up to 800 yards (1)	(1) Map: OS map 1891		
IP269	4 001 222 - MWX1496		SY 7038 7214	Slit trench at Grove Point	Slit Trench Earthwork	1940-41	Two slit trenches on cliff edge, covering East Weares. Very dangerous condition	Digital archive: CBA. 1985. Defence of Britain Project		
IP270	4 001 74 - MWX1388		SY 6918 7129	Home Guard observation post	Home Guard observation post	1940-41	Inserted into South Windmill tower, SMR No. 4 001 013 B - MDO6519	Digital archive: CBA. 1985. Defence of Britain Project		
IP271	4 001 373 - MWX441	SY67 SE94	SY 6850 7410	Portland Hospital	General Hospital	c1901	Former RN Hospital built c1901, with admin, surgical, medical and officers blocks and service buildings. Now a civilian hospital.(1)	(1) Index: NMR. Unknown. Portland Hospital. File BF100481		
IP272			(sites)	(sites of military works)	(military sites)	1940s	SMR includes various military sites since destroyed = 'Site'			
IP273	4 001 137 C - MDO6592		SY 6950 7153	Wakeham storehouse	Storehouse	Post-medieval to 1900	Extant building	Extant building	Listed	
IP274	4 001 138 A - MDO6593		SY 6846 7377	Castle Road, Fortuneswell	Police station	C20	Police station, no description. Extant building.		Listed	
IP275	4 001 293 - MWX3875		SY 6847 7353	Coastguard station at Chiswell	Coastguard station	C19	Coastguard station on first ed. OS map but not on second (1)	(1) Map: OS 1843		
IP276	4 001 360 - MWX4397		SY 6792 6876	Coastguard station [at Portland Bill]	Coastguard station	C19	Coastguard station on second ed. OS map (1)	(1) Map: OS 1891		
IP277			SY 6875 7185	Coastguard station, Reforme	Coastguard station		1863 map (6'): Coastguard Station			
IP278			SY 6985 7398	Balaclava Coastguard Station	Coastguard station		1889 map (10.5' part): Balaclava Coastguard Station			

ACNo	SMR	NMR	Grid Ref	Site Name	Mon Type	Date	Description	Sources	Status	Current record
IP279	4 001 343 - MWX4381		SY 6973 7109	Church Hope Cove boathouse	Boathouse	Post- medieval to C19	Boat house on first and second edition OS maps (1-2) Also on maps of 1863, 1901 and 1926-7 (3-5) Also in late C19 photograph in Portland Museum (6) Revenue boathouse (7)	(1) Map: OS 1843 (2) Map: OS 1891 (3) Map: OS 1864 (4) Map: OS 1901 (5) Map: OS 1929 (6) undated photograph 'Portland bay 6829' Portland Museum 1998-PM-P37 (7) Monograph: Morris, S. 2006. plate 106A		
IP280			cSY 6870 7440	Castletown boathouse	Boathouse	pre 1828	1828 map shows 'Boat House' near breakwater and Stone Piers at Castletown (1)	(1) Map: 1828		
IP281	WX3878 - MWX3878		SY 6785 6844	Boat Haul	Landing Point	Post- medieval to C19	Area on east shore of Portland marked Boat Haul on first edition OS map, not on second edition (1-2) A map of 1800 shows 'Boat Hall' north east of the Bill (3). In 1841 there is a small building beside it (4) and in 1863 there are two buildings (5)	(1) Map: OS 1843 (2) Map: OS 1891 (3) Map: 1800 (4) Map: Portland Tithe map 1841 (5) Map: OS map 1864		
IP282	4 001 371 - MWX4408		SY 6888 7416	Beacon	Beacon	Post- medieval to C19	Beacon marked on second edition OS map (1)	(1) Map: 1891		
IP283	4 001 372 - MWX4409		SY 6888 7398	Beacon	Beacon	Post- medieval to C19	Beacon marked on second edition OS map (1)	(1) Map: 1891		
IP284	4 001 376 - MWX4428		SY 678 703	Southwell Beacon	Beacon	Unknown	Beacon marked on chart of 1903 (1)	(1) Chart: Admiralty.1903. Straight [=Start?] Point to Portland		
IP285	4 001 375 - MWX4427		SY 652 769	Chesil Beach Rocket Post	Rocket Post		Rocket Post' on Chesil Beach marked on chart of 1903 (1)	(1) Chart: Admiralty.1903. Straight [=Start?] Point to Portland		
IP286	4 001 361 - MWX4398		SY 6781 6865	Rocket Post	Rocket Post		Rocket Post marked on second edition OS map (1)	(1) Map: 1891		
IP287	WX4375 - MWX4375		SY 6792 7400	Rocket Post	Rocket Post		Rocket Post marked on second edition OS map (1)	(1) Map: 1891		
IP288			SY 6782 6862	Rocket Post	Rocket Post		Rocket Post marked on 1926 rev OS map (1)	(1) Map: OS 25-inch map 1929		
IP289	WX4374 - MWX4374		SY 6761 7435	Flagstaff	Flagpole		Flagstaff marked on second edition OS map (1)	(1) Map: 1891		
IP290	WX4378 - MWX4378		SY 6845 7398	Rocket and Life Saving Apparatus House	Building		Rocket and Life Saving Apparatus House marked on second edition OS map (1)	(1) Map: 1891		
IP291			SY 6798 6877	Rocket and Life Saving Apparatus House	Building		Rocket and Life Saving Apparatus House marked on 1926 rev.OS map (1)	(1) Map: OS 25-inch map 1929		
IP292			SY 6773 6848	Quarry building(?) near Portland Bill	Building		1828 map: shows building (not named) 1850 map: two sheds, 1863 map: shed/building, 1901 map: building (not named) in same position as 1828			

ACNo	SMR	NMR	Grid Ref	Site Name	Mon Type	Date	Description	Sources	Status	Current record
IP293			SY 7058 7250	East Weares salt pool	Salt Pool		Salt Pool' shown on maps of 1800, 1828, 1832 and 1841. One of two ?			
IP294	4 001 349 - MWX4387		SY 6923 7238	Drill Hall	Drill Hall		Drill hall marked on second edition OS map (1)	(1) Map: OS 1891		
IP295	WX4379 - MWX4379		SY 6955 7326	Drill ground	Drill Hall'		Drill ground marked on second edition OS map (1)	(1) Map: OS 1891		
IP296	4 001 170 - MWX1384		SY 6818 7383	Anti-tank blocks	Cube	1940-41	Square anti-tank blocks with pyramid tops, at Recreation Ground, Victoria Square. Bad condition	Digital archive: CBA. 1985. Defence of Britain Project		
IP297	4 001 164 - MWX1378		SY 7018 7446	Inner Pier Head Fort	Coastal Battery		Coast artillery battery. Victorian fort comprising gun floor and basement with magazine. In use in WW1 and WW2.	Digital archive: CBA. 1985. Defence of Britain Project		
IP298	4 001 327 - MWX4242		SY 6830 6884	Battery	Battery		Battery' marked on 1841 Tithe map (1)	(1) Map: Portland Tithe Map 1841		
IP299	4 001 385 - MWX4522		SY 6769 6828	Coastal Battery at Portland Bill	Coastal Battery	Pre-1787	Marked on chart of 1787 (1)	(1) Chart: Mckenzie, M. 1787.		
IP300	WX4703 - MWX4703		SY 6799 7017	Possible military buildings, Southwell	Coastal battery?		Possible buildings on coast showing soarhead bastion features on a 1940s AP (1) Much may now be built over.	(1) Digital archive: Anon. 1940.1940s Aps. Ap40_36700E_7100N.tif		
IP301	4 001 328 - MWX4244		SY 6864 6904	Unidentified feature	Feature	Pre-1840	Unidentified oval feature on Tithe Map (1)	(1) Map: Portland Tithe Map 1841		
IP302			SY 6773 6882	Latrines	Latrines		Latrines' on 1926 rev map (1)	(1) Map: OS 25-inch 1929		
IP303			SY 6918 7273	Easton Lane smithy	Blacksmiths shop		Smithy on 1889 and 1901 maps, Saw mills (stone) on 1926-7 map			
IP304			SY 6918 7225	Easton Street smithy	Blacksmiths shop		Smithy on 1901 map			
IP305			SY 6856 7120	Weston Smithy	Blacksmiths shop		Smithy on 1901 map, not named in 1927			
IP306			SY 6906 7032	Coombeheld smithy?	Blacksmiths shop		Building, probably a smithy to serve the quarries. Marked on 1901 OS 25-inch map. Said to have most recently contained a traction engine			
IP307			SY 6889 7298	Verne Yeates smithy	Blacksmiths shop		Smithy' on 1889 map (1) Gone by 1901??	(1) Map: OS 1889		
IP308			6890 7320	Old Hill/New Road smithy	Blacksmiths shop		Smithy' on 1889 map at junction of Old Hill and New Road (1) Gone by 1927 (2)	(1) Map: OS 1889 (2) Map: OS 1929		
IP309			SY	Chiswell smithy	Blacksmiths shop		Smithy on 1901 map			
IP310			SY 6192 7173	Easton cinema	Cinema		marked on 1926-7 map			
IP311			SY 6925 7193	Easton Foundry	Foundry		marked on maps of 1901, 1926-7			
IP312			SY 6825 7390	Chiswell gas works	Gas Works		marked on maps of 1864, 1889, 1901, 1926-7 (1-4)	(1-4) Maps: OS Maps 1864, 1889, 1901, 1929		
IP313			SY 7020 7250	Prison gas works	Gas Works		marked on maps of 1864 (1), 1901 (2), 1926-7 (3)	(1) Map: OS 25-inch map 1864 (2) Map: OS 1901 (3) Map: OS 1929		
IP314			SY 6970 7405	Portland Nore gas works	Gas Works		Gas Works and gasometer in 1863 (1)	(1) Map: OS 1864		
IP315			SY 6848 7388	Castle Road gas meter house	Gas meter house			Maps: OS 1889 and 1901		
IP316			SY 6882 7320	Fortuneswell steam laundry	Laundry		Steam Laundry' in Brymer Avenue, Fortuneswell, 1927 (1)	(1) Map: OS 1929		

ACNo	SMR	NMR	Grid Ref	Site Name	Mon Type	Date	Description	Sources	Status	Current record
IP317	4 001 369 - MWX4406		SY 6861 7238	Wide Street council depot	Building		Council depot marked on maps of 1891, 1901 and 1927 (1-3)	(1) Map: OS 1891 (2) Map: OS 1901 (2) map: OS 1929		
IP318	4 001 370 - MWX4407		SY 6948 7432	Wooden jetty, Portland Harbour	Jetty	Post-med to 1843	Wooden jetty on first edition OS map (1) and a pier on second edition (2)	(1) Map: OS 1843 (2) Map: OS 1891		
IP319			SY 6914 7270	Maggott Quarry	Limestone Quarry	1828	'Maggot Quarry' is 'New' in 1828 (1)	(1) Map: 1828		
IP320			cSY 6870 7280	Vernyeats Quarry	Limestone Quarry	1816	Worked by Robert Attwool, John Rod and William Attwool in 1816 (1)	(1) TB Groves.1894, 168		
IP321			cSY 6850 7280	Tonge Quarry	Limestone Quarry	1816	'Tongue Quarry' in the Tout area on 1765 map (1). Worked by Edward Scoller and Newman Thomas in 1816 (2)	(1) Map: Isaac Taylor Dorset map 1765 (2) TB Groves.1894, 168		
IP322			SY	Barleycroft Quarry	Limestone Quarry		Named with foreman T. Rod in 1894 (1) Mentioned in book (2)	(1) TB Groves, 1894, 169 (2) Monograph: B. Jackson. 1999, 131		
IP323			SY	Slidcroft Quarry	Limestone Quarry		Mentioned in book (1)	(1) Monograph: B. Jackson. 1999, 131		
IP324			SY	Grain Croft Quarry	Limestone Quarry		Mentioned in book (1)	(1) Monograph: B. Jackson. 1999, 131		
IP325			SY 6971 7420	Boat house, Balaclava Bay	Boathouse		Shown on map of 1827 (1)	(1) Map: OS 1929		
IP326			SY 6778 7158	Pier on West Coast?	Pier?	1837	Appears to be shown on map of 1837 although not named (1)	(1) Map: Plan by E&GN Driver 1837		

## PORTLAND INDUSTRIAL SURVEY APPENDICES 2-5

### Appendix 2. Historic Map Sources

The following maps have been identified as the most reliable for determining the historical development of quarries and industrial archaeology on the Isle of Portland. Those used for compiling the historical quarry development map are marked thus \* .

#### \* 1710:

##### **A Plan of the Isle of Portland and parts adjacent**

[John Hutchins, *History and Antiquities of the County of Dorset*, 3rd ed. vol. 2, 1863]

Shows 'The Quarries' on the north east cliffs, with a track down to 'The Crane & Pier; above which are the rolls of Earth occasioned by the sliding down of the Rubbish from CC 1695 & 1708.' 'The Crane & Pier' (not named) are King's Pier [SY 70177352].

The 'Quarries' appear to have been cut back from the top of the natural cliffs by this date, somewhere in the region of Quarry Head at the top of the later Breakwater Incline. [cSY 700729] but extending from perhaps SY 703724 to SY 696736. Although not shown on the map, it must be assumed that fallen blocks were being quarried in the landslips of the East Weares ('The Common'). The depiction of a scattering of buildings(?) here may be related to stone cutting. Shows the two windmills as sketches (not named).

#### \* 1745:

##### **A Plan of the Island of Portland in the County of Dorsett, with a description of his Ma'ty's Demesne Lands and Quarries there, taken by Virtue of a Royal Warrant from the Honourable Thos. Walker Esqr. his Ma'ty's Surveyor General bearing date the 25<sup>th</sup> day of September 1745. by me Thos. Roper Guardian & Keeper of the Said Quarries 6 Novr 1745**

[Weymouth Reference Library L912.332RO.1, a photocopy of PRO MPE 1/356]

Clearly marks 'Quarried out' ground in the King's Lands ('A'), Common (B') and Private Lands ('C') on the north east and north of the island approximately from the Grove around to Priory Corner. There are other clifftop quarried out areas on the west above Clay Ope [SY 68237205] and a small one on the east beside Rufus Castle [SY 69807120]. Small quarries are shown at the Grove [SY 699726] and near the Verne. In addition three 'quarried out' areas are indicated in the Penn's Weare section of East Weare. Two have a track leading past 'Church hope key' to the top, while the third has a track leading to 'Dirtle [?] key'. Shows 'Old Pier at present useless being destroy'd by the Sea' (this is Folly Pier) and 'King's Pier'.

This map closely coincides with John Smeaton's visit in 1756, when he was shown around by a Mr Roper (the same?), a quarry manager and 'a very plain, sensible, intelligent person.'

Shows the two windmills as sketches (not named), two 'Lighthouses' as sketches on the site of the higher light.

#### **1765:**

Dorset Shire by Isaac Taylor

Despite being a map of the whole of Dorset, this is surprisingly detailed for Portland, naming Kings Key, New Pier, New Key or Dirtle Pier and Hop Pier [or 'Old Church Hop Pier'?). Also named are 'Tongue Quarry' in the Tout area, 'New Quarry' at the Verne and 'Geave Quarrys' along the north east cliffs. 'Ramsgate' and 'Blackfryers' at this last location suggest destinations for Portland stone.



Names the two 'Light Houses'.

**1770:**

Plan of Roads and Piers in the Isle of Portland, Dorsetshire

[PRO MPE 1/411]

This plan of the East Weares shows a road descending from the cliff top at Quarry Head and branching to King's Pier and New Pier; blocks of stone are depicted at all three locations. Also shown is the much smaller 'Mr Gilbert's Pier Commonly known by Folly.'

**1772:**

A Plan of the South East Part of Portland against the Sea from Church Hope to the Lighthouses. Taken the 1<sup>st</sup> December 1772. copied from original late in the possession of John Henning, Esq.

[Weymouth Reference Library]

**1794:**

A chart of the Isle, Roads and Race of Portland, published by Laurie and Whittle

[Weymouth Reference Library]

Shows Hop Pier or South Pier, New Key or Dirtle Pier, New Pier and Kings Key or North Pier; two lighthouses and two windmills

**\* 1800:**

**A Map of the Isle of Portland by F.Webb and Co. Salisbury**

[Weymouth Reference Library, a photocopy of PRO MPE 1/356]

A map of the Isle of Portland, copy of map drawn by Gilbert Steward, appears to be a copy of Webb's map [Portland Museum]

Shows the extent of the quarried land which is continuous from the Grove all around to Trade and Bowers, as well as indicating trackways within the quarries for development and for tipping from the cliffside. 'Common Rubble Ground', indicating back-filled quarry workings, skirts the north east side.

There is a possible small quarry at the south end of Wide Street, and probable quarrying at Freshwater Bay (served by Underbank Pier) and in the Southwell landslip area (served by Church Hope Chine Pier). In the East Weares, a track leads down from the top to King's Pier and numerous smaller tracks lead from the landslips to Dirtle Pier. There are three Church Hope Piers. Other piers are New or Folly Pier, Church Hope Chine Pier and Underbank Pier on the east coast. At the Bill are the 'New Light House' (lower) and 'Old Light', Attendants House and Signal House. The two windmills are shown as sketches in 'Windmill Field'.

The Portland museum map shows 'Boat Hall' and 'Sturt Shipping Place' just north east of Portland Bill. This would suggest some stone quarrying from the shore or cliffs.

Piers: trackways lead to King's Pier, Dirtle Pier and Church Hope Piers (three).

**1805-6:**

Ordnance Surveyors' Drawing OSD 56

Shows 'Quarries' around north, 'Quarry Head', King, Folly and Dirdale Piers, two windmills (symbols), 'Hr Lighthouse', 'Lr Lighthouse' and 'Bill Signal'.

**1811:**

Ordnance Survey 1-inch map first series, sheet 17 (from OSD 56 of 1805-6)

Shows quarries (not named) around north, 'Quarry Head', 'Kings Quay', 'Folly Pier' and 'Dirdale Pier', two windmills (symbols), 'Hr Light', 'Lr Light', 'Signal Ho' and 'Verne Signal'.

**1824:**

Plan of Railway or Tram Road in over and through certain lands in the Parish of St George, Island of Portland in the County of Dorset 1824.

[DRO QDP(M) R3 1]

'The dotted line shews the intended track of Railway.' It is indicated from the top of 'New Road', around the head of Tillycombe (not named), with double sharp beds above Fortuneswell and another sharp bend above Castletown (not named) and then dividing to two piers west of the Castle and five piers to the east. These piers are already linked by road from Fortuneswell.

**1825-26:**

Printed map of Dorset, by C. & J. Greenwood, surveyed in 1825-6.

[DRO M13]

Shows quarries (not named) around north, 'Quarry Head', 'Kings Quay', 'Folly Pier' and 'Dirdale Pier', two windmills (symbols), 'Higher Light', 'Lower Light', 'Signal Ho', 'Vern Signal' and 'Boat Hole'.

**\* 1828:****Plan of the Island of Portland in the County of Dorset, by J. Wyld**

[DRO Photocopy 365/11]

Large-scale plan with field names and strips

- requires permission to copy from depositors, Trustees of H.J.Sansom

Shows quarried areas around north east, north and north west with many tracks leading out to cliff edges, but not named. Gives owners of properties next to the quarries. Marks 'Rail Road' from 'Stone Piers' to Priory Corner (not named), as single track with six branches onto pier. Similar to Webb's 1800 but also shows two early inland quarries. 'Maggot Quarry' is 'New', while a small 'Fancy Quarry' in Wide Street has a 'Rail Road' leading away into the fields of Inmosthay; herein lies the origin of the Fancy Beach waste tip which survives today. This is also the first quarry tramway on any map. Shows 'Quarry Head', 'Nicodemas Knob', New, Kings, Folly and Dirdale Piers, and also 'Salt Pool'. Possible quarry workings and tracks are shown at the Bill. Marks 'Lower Light House, Higher Light House and Signal House at Portland Bill, and Verne Signal House at Verne. Names different Weares.

**1832:****Plan of Grove and Easton area of Portland, showing proprietors of quarry lands, by Roger Hopkins & Sons**

[Weymouth Reference Library, a photocopy of PRO MR 1/538]

Similar to 1828 map, and it must be a copy. A minor exception is the addition of a small quarry near the West Cliff in the Bowers quarry working area.

**1837:****Plan of a Customary Freehold Estate in the Isle of Portland, For Sale, By E. & G.N. Driver**

[Weymouth Reference Library]

Accompanied by auction sale catalogue of Messrs Driver, London, 23 June 1837, indicates the state of quarrying in some properties of the late Gabriel Tucker Steward.

Shows 'Rail Road' from 'Priory' to shipping piers at Castletown (not named). Indicates quarried areas with trackways drawn inside. The 'New Road' climbs from Fortuneswell and continues along the top of West Cliff at Tout. 'Maggot Quarry' is marked. A track leads down to King's Pier and numerous tracks in East Weare lead to Dirdale (?) Pier. Also marked and named are Folly Pier, Church Hope Piers (three), Church Hope Chine Pier, Underbank Pier and 'Shipping Place' near Portland Bill. On the west coast is Gilberts Pier.

In Inmost Hay Field:

Strip 126 'Four Yards of Land' is 'Not yet quarried, but may fairly be presumed to be so at no very distant period.'

Strip 128 'West Yeates' is 'Rubble' and 'Worked out, but profit derived from Road and Rubble dues.'

Strip 129 adjoining is also 'Rubble' and 'Valuable for Road dues.'

Priory Ground:

'Not shewn on Map, four parcels of 'Rubble' land, 'Good Road Dues, and Public Railway Crane stands on part.'

Tout Field:

135 & 136 'Chappark', described as 'Rubble', 'Capable of receiving Rubble Dues.'

133 'In Purse's Chappark, 'Rubble'.

135a 'In Tout' single strip of 'Arable', 'Recently begun to be worked.'

\* Many others indicate rubble areas (quarried out) or areas about to be quarried.....

Marks windmills (not named) in Droop or Windmill Field, 'Old or Northmost Lighthouse', 'New Light House', Signal Post, Signal House at the Bill and Signal Post on the Verne.

#### **1841:**

Portland Tithe Map

[DRO T/PTD, on a CD]

[tracing of north of island, with additional details elsewhere]

Shows a similar boundary to the main quarried area. All these maps point to early quarrying from the cliffs in the Bowers area, for some reason never extended further south.

#### **1850:**

Admiralty chart of Weymouth and Portland, by Capt Sheringham, Lieut Cox and Mr Taylor.

[Weymouth Reference Library]

Shows quarries all around north and at Portland Bill (with two sheds) and Longstone Ope, King Pier, Folly Pier, two windmills (symbols), 'High Light' and 'Low Light'.

#### **1861:**

Plan of Lands in the Isle of Portland Dorsetshire Intended to be Purchased by Her Majesty's Principal secretary of State for the War Dept., August 1861

[in Jackson, 1999, 26]

shows outlines of Yeates E and W limekilns, upper branches of Portland Railway including incline and East Drum, and Cottage & Stable.

#### **1863/4:**

Ordnance Survey 25-inch map by Capt Carey, published March 1864

[Portland Museum, a photocopy in 13 sheets]

Surveyed 1863

Ordnance Survey 6-inch map [DRO?]

#### **\*1889:**

Ordnance Survey 25-inch map

[extract covering northern Portland quarries published by Alan Godfrey Maps]

#### **1889:**

Ordnance Survey 10.56-foot sheet LVIII.7.25 revised for War Department only

[Nothe Fort, Weymouth]

Shows C Battery, Balaclava Coastguard Station and Railway ('in construction')

**1901:**

Ordnance Survey 25-inch map  
[DRO]  
Ordnance Survey 6-inch map  
[DRO?]

**1920:**

Portland Depot Quarries map (OS 25-inch)  
[DRO D49/10]  
I have a photocopy of most of this map, covering The Grove and Admiralty Quarries area, printed in 1920.

**1923:**

Ordnance Survey 25-inch map

**1929:**

Ordnance Survey 25-inch map (surveyed 1927-27)  
[DRO & Alan Godfrey maps facsimiles]

**1933:**

Map of south part of Portland, with 'Quarry Lands ... controlled by The South Western Stone Co. Ltd.'  
[in *Portland Stone* (South Western Stone Co. Ltd, 1933)  
Map is useful in showing the wide distribution (and problems) of small quarry properties acquired by this company, all conforming the Portland strip fields.

**1938:**

Ordnance Survey 25-inch sheets LVIII 4, 7, 8, 11 & 12, War Department revision  
[Nothe Fort, Weymouth]  
Shows part of King Barrow Quarries, Nicodemus Knob, Portland tramway and incline, Admiralty incline, King's Pier, Castletown Pier, stone saw mills at Chiswell, and old limekilns.

**1959:**

Ordnance Survey 25-inch map, SY 6872 and SY 6972  
[Nothe Fort, Weymouth]  
Revised September 1959, published 1960.

### **Appendix 3. Secondary sources for Portland background, quarries, railways and industrial archaeology**

#### **QUARRIES**

Arkell, W.J. 'The Names of the Strata in the Purbeck and Portland Stone Quarries, *PDNHAS*, 66, 1944, 158-168

Arkell, W.J. *Oxford Stone*, Faber, 1947, 105-6, Portland stone at Oxford.

Arkell, W.J. et alia, *Geology of the Country around Weymouth, Swanage, Corfe and Lulworth*, HMSO, 1947, reprinted 1968, 119.

Berg, T. & P., R.R. *Angerstein's Illustrated Travel Diary, 1753-1755: Industry in England and Wales from a Swedish Perspective*, Science Museum, 2000, 69-74: visited 6 May 1754, describes quarries and geology

Betty, J. *The Island and Royal Manor of Portland*, 1970

Betty, J. 'The Agriculture and Stone Industry of the Island of Portland at the beginning of the nineteenth century', *PDNHAS*, 92, 1970, 244-9

Betty, J. 'The Supply of Stone for Re-building St Paul's Cathedral', *Arch. Jnl*, CXXVIII, 176-185 (reprinted by Royal Arch Inst, 1972)

Bezzant, N. *Out of the Rock...*, Heinemann, 1980.

Chaplin, C. *Dorset from the Air*, Dovecote Press, 1985: includes Portland

Clifton-Taylor, A. *The Pattern of English Building*, 1972, 68-70

Claridge, J. *General View of the Agriculture in the County of Dorset*, 1793, 41

Clarke, E.D. *A Tour Through the South of England, Wales, and Part of Ireland, made During the Summer of 1791*, 1793, 40-7; 42 describes horses taking blocks down to the coast

Cockburn, E.O. *The Stone Quarries of Dorset*, 1971: includes Portland

Cull, E.F. 'Round and about a Portland Quarry', *Dorset Year Book*, 1971-2, 17-18 (describes a visit to a disused quarry)

Damon, R. *Handbook to the Geology of Weymouth and the Island of Portland*, Stanford, London, 1860

Damon, R. *Geology of Weymouth, Portland, and Coast of Dorsetshire*, Weymouth, 1884

Edmunds, F.H. & Schaffer, R.J. 'Portland Stone; its Geology and Properties as a Building Stone', *Proc Geol Assoc*, 43, 1932, 225-40: describes geology and quarrying methods

Edwards, J.M. *Old Portland*, Milborne Port, 1983: some refs (see also DCM 104 for extracts)

- Fitton, W.H. 'Observations on some of the strata between the chalk and the Oxford oolite, in the south-east of England', *Trans Geol Soc London*, 2nd series, IV, pt 2, 1836, 103-388: 219-220 includes Portland
- Ford, T.D. & Hooper, M.J. 'The Caves of the Isle of Portland', *Trans. of the Cave Research Group of Great Britain*, vol.7, no.1, Dec 1964, 13-37
- Groves, T.B. 'Some Local Stone Marks', *Procs. Dorset Nat. Hist. & Arch. Soc.*, vol. 15, 1894, 167-171: marks on squared stones made by quarriers
- Hounsell, S.S.B. *Portland and its Stone*, 1952
- Hudson, K. *The Fashionable Stone*, Bath, 1972: includes Portland
- Hudson, K. *Industrial History from the Air*, Cambridge University Press, 1984, PLATES 9 & 10
- Hunter, W.P. 'Rough notes made during a visit to the freestone quarries of the Isle of Portland, on Wednesday, August 25, 1825', *Mag. Nat. Hist.*, IX, 1836, 97-101
- Hutchins, J. *The History & Antiquities of the County of Dorset*, II, 3rd ed 1862, 818-21
- Jackson, B.L. *Isle of Portland Railways, vol. 1. The Admiralty and Quarry Railways*, Oakwood Press, Usk, 1999
- Knoop, D. & Jones, G.P. 'The English Medieval Quarry', *Econ Hist Review*, IX, 1938-9, 21-24
- Lano, R. (compiler) 'A Visitor's Impressions of Portland and its People. AD 1836', *Dorset Year Book* 1980, 15-17 (brief mention of quarries; from *Penny Mag.* 1836)
- Mallory, J.E., 'Places and Products. VIII. Portland Stone', *The Geographical Magazine*, vol. IX, no.5, September 1939, 327-338
- Morris, S. *Portland: An Illustrated History*, Dovecote Press, 1985
- Morris, S. *Portland Camera*, Dovecote Press, 1990
- Morris, S. *Portland Then and Now*, Dovecote Press, 2006
- Pentin, H., 'Old Portland', *Procs. Dorset Nat. Hist. & Arch. Soc.*, vol. 37, 1916, 228-53: includes descriptions and copies of watercolour views by J.W.Upham, 1802-5.
- Perkins, J.W. *Geology Explained in Dorset*, David & Charles, 1977, 195-8 & 202-4
- Pushman, D. *Precious Stone of Dorset*, 1987: refers to Cenotaph in Whitehall; quarried at Portland.
- Report of the Commissioners appointed to visit the Quarries, and to inquire into the qualities of the stone to be used in building the New Houses of Parliament*, 1839: Includes Portland quarries with details; Table A has 9 quarries; 6-7 historical; Table C has chemical analysis

Richardson, N.M. 'The Travels of Peter Mundy in Dorset in 1635', *Procs. Dorset Nat. Hist. & Arch. Soc.*, vol. 42, 1920, 42-49: described 200 stone workmen 'some hewing out of the Cliffe' etc.

Smeaton, J. *Report on Eddystone Lighthouse*, 17...: describes Portland quarries and quarriers

Stanier, P. *Dorset's Industrial Heritage*, Twelveheads, 1989

Stanier, P. *Dorset in the Age of Steam: A history and archaeology of Dorset industry, 1750-1950*, Halsgrove, Tiverton, 2002

Stanier, P. *Discover Dorset: Industrial Past*, Dovecote Press, 1998

Stanier, P. *Quarries & Quarrying*, Shire, 1985: photo of Suckthumb Quarry

Stanier, P. *Quarries of England & Wales*, Twelveheads, 1995: photos and captions of quarries, Bottomcombe works, etc

Stanier, P. *Stone Quarry Landscapes*, Tempus, 2000: chapter 13 on Portland

Stevenson, W. *General View of...Dorset*, 1815, 51-4: gives some statistics and quotes from Stevenson's report.

Trim, P. *The Quarrying of Portland Stone* (Island of Portland Heritage Trust, 1991)

*Victoria County History Dorset*, 1908, vol. II, 331-344; 338-43, history of Portland stone and quarries.

Warland, E.G. *Portland Stone*, South Western Stone Co, 1933

Weinstock, M. B. *Old Dorset*, David & Charles, 1967, 161-4.

Wallage, Bob 'We Dree', *Dorset Year Book*, 1993, 60: short poem, refers to "Mistress Stone"

Wallage, Bob 'The Stone Grant Fund and Emigration', *Dorset Year Book*, 1997, 110-111

Wallis, A.M., 'The Portland Stone Quarries', *Procs. Dorset Nat. Hist. & Arch. Soc.*, vol. 12, 1891, 187-194

Welch, C. 'The Quarrymen (a tribute)', *Dorset Year Book*, 1977, 47: poem

White, W., 1855, *A Londoner's Walk to the Land's End*, Chapman & Hall: includes descriptions of railway, quarries and breakwater works

Working Party, 1977, *The Stone Industry on Portland: Report of the Working Party*, Dorset County Council, 1977: report of Working Party on future of Portland quarries, with historical notes

*Dorset County Magazine* 94: Souvenir Issue: some refs

*Som & Dor Notes & Queries*, XIV, 1914, 61-2: ships to repair St Paul's Cathedral in 1637, I. Jones

## LIMEKILNS

Stanier, P. 1993 'Dorset Limekilns: a first survey', *Procs. Dorset Nat. Hist. & Arch. Soc.*, vol. 115, 1993, 33-49

Stanier, P. 'More Dorset Limekilns', *Procs. Dorset Nat. Hist. & Arch. Soc.*, vol. 117, 1995, 91-94

## RAILWAYS & TRAMWAYS

Jackson, B.L. *Isle of Portland Railways, vol. 1. The Admiralty and Quarry Railways*, Oakwood Press, Usk, 1999

Jackson, B.L. *Isle of Portland Railways, Vol. 2, The Weymouth and Portland Railway and the Easton and Church Hope Railway*, Oakwood Press, Usk, 2000

Jackson, B.L. *Isle of Portland Railways, Vol. 3, Railway, Associated and other Bus Services*, Oakwood Press, Usk, 2000.

Jackson, B.L. *Rail and Road Transport on the Isle of Portland, A Pictorial Survey*, Oakwood Press, Usk, 2002.

Lilley, G.H. *Tourist's Guide to the Isle of Portland, 1892: map shows railways* [reproduced in *DCM* 94]

Stanier, P. *Dorset's Industrial Heritage*, Twelveheads Press, 1989

Stanier, P. *Discover Dorset: Industrial Past*, Dovecote Press, 1998

Stanier, P. *Dorset in the Age of Steam*, Dorset Books, 2002

## BUILDINGS AND GENERAL

Eric Ricketts, E. *The Buildings of Old Portland*, 1979, privately printed

Legg, R. *The Book of Portland*, Halsgrove, 2006

## WINDMILLS

Bone, M. 'Dorset Windmills', *SDNQ*, XXI?, pt 311, March 1980, 11-19; pt 312, Sept 1980; pt 321, March 1985, 430-1; *SDNQ*, XXXIII, pt 341, March 1995, 360-363.

## SHIPPING

Male, H.G. *Exported Wealth: the story of stone by sea*, Artsmiths, Portland, 1995

Betty, J. *The Island and Royal Manor of Portland*, 1970: includes section on Portland Breakwater

Boddy, M. & West, J. 'Imperial Works and Worthy Kings - the Building of Portland Breakwater', *Dorset Year Book* 1981, 39-43

Boddy, M. & West, J. 'The Portland breakwaters: a Victorian achievement', *Inds. Archaeol.*, XVI, 1981, 238-54



Carter, G. *The Royal Navy at Portland since 1845*, Liskeard: Maritime Books, 1987

Hattersley, T.P. 'Portland Breakwater', *Dorset Magazine*, 27 (1972), 48-56

Legg, R. 'Convict achievements', *Dorset County magazine*, 104, 26-32: account of Portland breakwater

McAuslane, A. et al *The Royal Navy and Portland* (Portland, 1978)

Newth, John 'Portland Port', *Dorset Life*, Jan 2006, 34-38

Otter, R.A., *Civil Engineering Heritage: Southern England*, Thomas Telford Ltd, 1994 [Weymouth, Portland Harbour]

Sellman, R.R. *Illustrations of Dorset History* (Methuen, 1960), 56: Portland Naval Base, notes, including forts and breakwater.

Clammer, R. *Cosens of Weymouth 1918 to 1996*, Twelveheads Press, 2001

Gill, R., et al, *The Tragedy of the Wrecking of the Sailing Ships "Avalanche" and "Forest", 11th September 1877*, Fortuneswell, 1977

#### ROAD TRANSPORT

Cull, E.F. 'Portland - A Courtesey Call on "Old Hiram" ', *Dorset Year Book*, 1977, 159-161 (portable steam engine)

Wallage, Bob 'The traction engines of Portland', *Dorset Year Book*, 1996, 71-4

#### **Appendix 4. Published Photographs of Portland quarries and industrial archaeology**

**Anon, 'The Quarrying of Portland Stone', *Quarry Managers' Journal*, June 1962, 223-230**

##### **Quarries**

p.225: A 'quarry' at Easton, shows at least 7 electric cranes. Not located or dated.

p. 227 (top): A quarry with 2 electric cranes near Easton. Not dated.

p.227 (btm): Excavator excavating overburden, with dumper lorry. Not located or dated.

p,228 (top): Excavator loading lorry with capstone. Not located or dated.

p.228 (btm): Conveyor from primary crusher to screen house and stockpile. Not located or dated.

p.229: Screen house and stockpile area. Not located or dated.

##### **Transport**

p.223: Red crane, near Portland Bill (caption says 'stone is being worked'). Not dated.

p.230: Loading system and Dutch coaster *Antje* at Castletown Pier. Not dated.

**N. Bezzant, *Out of the Rock...*, Heinemann, 1980**

##### **Quarries**

Plate 5 (btm): Measured and marked stone block of 42 cu ft

Plate 30 (top): view from Freshwater along coast to NE, with crane. Not dated [Herbert, Weymouth]

Plate 31: Lifting out a broken hand crane. 1893. No location.

##### **Stone works**

Plate 40 (btm): Bottomcombe masonry works after extensions and conversion to electricity in 1931 [Markus, Weymouth].

Plate 41 (top): Bottomcombe: grinding machine puts in a groove. No date. [Evan Jones, S. Dorset]

Plate 41 (btm): Drilling dowel-holes for fixing, at Bottomcombe works. No date.

Plate 42 (top): Bottomcombe works: twin-bladed secondary circular saw. No date.

Plate 42 (btm): Bottomcombe works: jointing off after planing. No date. [Evan Jones, S. Dorset]

Plate 47 (a): Masons at Portland tooling a Cross of Remembrance. No date.

##### **Transport**

Plate 5 (top): Drawing of horses with stone cart descending hill at Mallams

Plate 26: Barge *May* leaving Portland in 1972 [Bristol & West Photography]

Plate 28 (btm): Bottom of Merchants' railway incline. Not dated.

Plate 29: Incline at Verne Yeates, under bridges. Not dated.

Plate 30 (btm): Priory Corner with derrick and a stone truck on Merchants' Railway. No date [Herbert, Weymouth]

Plate 40 (top): Traction engine and two trailers. Poor view. No date.

**D. Burnett, *A Dorset Camera*, Dovecote Press, 1974**

##### **Quarries**

Plate 89: 'Convicts Quarry' [this is actually the granite quarry at Princetown Prison, Dartmoor!]

##### **Transport**

Plate 88: Incline on branch of Merchants' Railway before building the Verne fort, c.1855

**T. Gosling, *Britain in Old Photographs: Weymouth and Portland*, Alan Sutton,**

## 1995

*Photographs from Dorset County Museum collection:*

### **Quarries**

p.119 (top): Lifting a block of Portland stone by crane and chain sling, summer 1966. Not located. [David Willis]

p.119 (btm): pneumatic drilling holes for blasting cap, summer 1966. Quarry not located

p.120 (top): Quarryman driving in plugs and feathers in a block, August 1966. Not located [David Willis]

p.120 (btm): Quarryman driving in plugs and feathers in a block, August 1966. Not located [David Willis]

p.121 (top): Quarryman driving in plugs and feathers in a block, August 1966. Not located [David Willis]

p.121 (btm): Quarryman prising apart a block split with plugs and feathers, August 1966. Not located [David Willis]

p.122 (top): Quarryman shaping a block with a big kivel, summer 1966. 'One of the Grove quarries'. [David Willis]

p.122 (btm): Quarryman removing plugs and feathers, summer 1966. Not located [David Willis?]

p.123 (top): Quarryman using pneumatic drill to make holes for plugs and feathers in a block, summer 1966. Not located [David Willis?]

p.123 (btm): Collection of tools including large and small kivels. Not dated.

### **Stone yards**

p.117 (top): Masons inside F.J. Barnes' masonry shop at Wide Street; includes Jummy Durston, Tom Croad and Harry Hawkins. 1928.

p.117 (btm): Bath & Portland Stone Firms' main shop of no.4 yard, Bottom Coombe. c.1950

p.118 (top): masons' workshop. not located. (looks like older section of Top Yard)

p.118 (btm): giant circular saw at work, 1965. Not located, but Bottomcoombe.

### **B. Hounsell, 'Portland and its Stone', *Mine & Quarry Engineering*, April 1952, 107-114**

#### **Quarries**

p.112: A quarryman's tools, displayed on a block.

p.113: Quarrymen making a pit for cutting a block. Not located or dated.

### **K. Hudson, *The Fashionable Stone*, Adams & Dart, 1971**

#### **Quarries**

Plate 10: Four men working a hand operated crane, during the 1930s. no location.

#### **Stone works**

Plate 13: Diamond-tipped circular saw cutting stone at Portland works. no date and no location.

### **K. Hudson, *Industrial History from the Air*, Cambridge University Press, 1984 *Cambridge University aerial photographs:***

#### **Quarries**

Plate 9: Aerial view looking NE over Bowers, Trade, Tout, Inmosthay and beyond, December 1965 [CUC, AMN 74]

Plate10: Aerial view looking SE across Suckthumb and Coombefield quarries from Weston, June 1948 [CUC, AS 14]

### **P. Irvine, *Victorian and Edwardian Dorset from old photographs*, Batsford, 1977**

#### **Quarries**

Plate 82: Portland quarry crew loading stone at Priory Corner, c.1900.

#### **Stone works**

Plate 80: Portland stonemasons, c.1909. No location.

**B.L. Jackson, *Isle of Portland Railways, vol 1, 1999***

**Transport**

- p.17 Seal of the Portland Railway Co.
- p.29 (top) engraving of original middle drum of incline, c1851 [author colln]
- p.29 (bottom) Verne South Gate incline 1850s [author colln] [same as Burnett Plate 88]
- p.30 (top) Merchants Railway at top of Tillycombe after WWI [author colln]
- p.30 (bottom) Verne Yeates incline and bridges [author colln]
- p.31 Yeates incline showing trucks and winding drum [K. Bakes colln]
- p.32 Yeates incline detail from half way up [author colln]
- p.33 (top) Priory Corner view [author colln]
- p.33 (bottom) Priory Corner with trucks and horses with nosebags [E. Latcham colln]
- p.34 (top) Prior Corner, horses pulling trucks [author colln]
- p.34 (bottom) Merchants Railway course past rectory [author colln]
- p.36 (top) Two loaded trucks near top of incline [author colln]
- p.36 (bottom) stone truck at top of incline with two men [author colln]
- p.38 loaded truck descending incline [author colln]
- p.39 (top) view up incline from under Easton Railway Bridge [author colln]
- p.39 (bottom) bottom of incline, pre-WWI [author colln]
- p.40 (top) bottom of incline postcard view with track layout [author colln]
- p.40 (bottom) bottom of incline with loaded trucks [E.Latcham colln]
- p.41 (top) bottom of incline with horses and trucks 'in later years'[J.H.Lucking colln]
- p.41 (bottom) bottom of incline with trucks 'in later years'[J.H.Lucking colln]
- p.46 Castletown Road with loaded trucks near pier, n.d. [author colln]
- p.48 (top) Castletown Pier with loaded trucks and sidings n.d. [author colln]
- p.48 (bottom) Castletown Pier with line of loaded trucks + passenger steamer, pre-WWI [author colln]
- p.49 (top) Castletown Pier with many loaded trucks from distance, post WWI [author colln]
- p.49 (bottom) Castletown Pier with trucks loading into coaster [E.Latcham colln]
- p. 162 Priory Corner with crane lifting stone from traction engine [S. Morris colln]
- p.126 (top): Simple stone bridge over tramway in quarry 'north of Easton'. Recent but no date. [M.J.Tattershall]
- p.126 (btm): Lano's Arch at Tout Quarry. Recent but no date. [M.J.Tattershall]

**Quarries**

- p.103 (top): Convict Quarry, with cranes and railway with steam loco; no date.
- p.103 (btm): Convict Quarry, with cranes and rail wagons; no date.
- p.104 (btm): Convict Quarry, with steam derrick; no date.
- p.106 (top): Convict Quarry, with cranes trucks. tower of blondin in distance. postcard, no date.
- p.106 (btm): Convict Quarry with crane, railway and vertical steam boiler. No date (same as Morris, 1980, 128)
- p.126 (top): Simple stone bridge over tramway in quarry 'north of Easton'. Recent but no date. [M.J.Tattershall]
- p.126 (btm): Lano's Arch at Tout Quarry. Recent but no date. [M.J.Tattershall]
- p.130 (top): F.J. Barnes' 2-ft gauge loco *Excelsior* of 1898 and tipper wagons for overburden. no date. (same as Morris, 1990, plate 86)
- p.130 (btm): Tipping spoil over West Cliff, with 2-ft gauge loco *Excelsior*. No date.
- p.134 (top): Steam channeller, no location or date [P. Trim collection]
- p.134 (btm): *Excelsior* with trucks during clearing ground. No date.
- p. 136 (btm): Coastal quarries at Longstone Ope to Breston, looking NE, showing steam crane, 9 timber hand derricks, waste tramway and steam channeller chimney,

with face. No date. (K. Lynham collection). [ Same as Trim, 1991, Fig. 19]  
p.148: Traction engine *Zulu* loading stone at a quarry crane. Dated 'turn of century'  
but no location.

**R. Legg, *The Book of Portland*, Halsgrove, 2006**

**Quarries**

- p. 35. Stone with Wren's markings, found by William Attwool
- p.36. Admiralty Quarries c1902 [poor quality]
- p.36. Quarry section in centre, photographed in 1932
- p.39. Lano's Arch, Tout Quarry
- p.40. Independent Quarry to south, 2001
- p.69. Convict Quarries 1890s
- p.69. Convict Quarries 1890s, a closer view
- p.70. Convict Quarries 1890s, 'looking to Verne'
- p.70. Convict Quarries 1890s, 'looking south' [LOOKS NORTH!]
- p.70 'Admiralty Quarries in 1890' [THIS IS DARTMOOR!]
- p.91. Coaster at Castletown loading stone

**Transport**

- p.35 Priory Corner, crane and horses, engraving, 1864
- p.36. Priory Corner with traction engines, post1927
- p.58. Timber Red Crane at Portland Bill, 1973
- p.156. Timber Red Crane at Portland Bill, 1974

**Lighthouses**

- p. 107. Lower lighthouse c1906
- p. 107. Upper Lighthouse post 1907
- p.107. Portland lighthouse
- p.107. 'A' Head breakwater lighthouse in 1972

**Windmills**

- p.29. North Mill (calls this Angel Mill) and South Mill in 1967
- p.29. North Mill (calls this Angel Mill) above quarry

**Military**

- p.77. High Angle Battery view, modern
- p.81. High Angle battery turntable, modern
- p.77. Verne Citadel South Entrance
- p.93. Fort Head or Chequered Fort

**C.G. Maggs, *Branch Lines of Dorset*, Sutton Publishing, Stroud, 1996**

**Stone works**

- p.50 (top): Portland Station, looking SE with sidings and F.J.Barnes' steam stone works. c.1923

**Transport**

- p.50 (top): Portland Station, looking SE with sidings and stone works. c.1923
- p.50 (lower): steam passenger train arriving at Portland Station, 14 June 1949
- p.51 (top): two gantry cranes at Castletown exchange sidings, c.1900
- p.51 (lower): result of landslip on railway track in East Weares, November 1907
- p.52 (top): Easton Station after a fire, 28 November 1903
- p.52 (lower): steam loco and passenger train at Easton, c.1935
- p.53 (top): view of Easton Station and engine shed looking S from Reforne bridge, c.1959
- p.53 (lower): view of Easton Station and water tank looking S from Reforne bridge, c.1965
- p.54 (top): Easton Station, goods shed and footbridge, looking N, 1959
- p.54 (lower): Easton Station, goods shed & loading gauge, derelict before track lifted, 22 July 1966

**J.E. Mallory, 'Places and Products VIII. Portland Stone', *The Geographical Magazine*, vol. IX, no. 5, Sept 1939, 327-338**

\* None of these good photographs is dated, but presumably c.1938/9

**Quarries**

p.330: A Portland Quarry, showing cranes, gullet, banks and horse with rubble truck. Informative, but not located or dated.

p.331: stone being freed by the 'dog'. Not located or dated.

p.332: block being scappled with kivels. Not located or dated.

**Transport**

p.333: Derrick crane at Priory Corner, with stone laden trucks on Merchants' Railway. Not located or dated

**Masonry works**

p.334: stacks of finished masonry in yard with overhead traveller, for Imperial Airways Building, Not located or dated.

p.335 (top): Frame saw at stone yard. Not located or dated.

p.335 (middle): Circular diamond saw at stone yard. Not located or dated.

p.335 (btm): Circular carborundum saw at stone yard. Not located or dated.

p.336 (top); Planer at work on jamb for Wolverhampton Municipal Hall, Stone Yard. Not dated.

p.336 (btm): Column being turned on giant lathe, Stone Yard. Not dated.

p.337 (top): Three masons working on stones for Leeds Town Hall. Stone Yard. Not dated.

p.337 (btm): Mason finishing stone for Leeds Town Hall. Stone Yard. Not dated.

**Buildings**

pp329-330: London buildings in Portland stone: St. Paul's Cathedral, Bow Spire, Horse Guards' Parade, Somerset House, London University, Imperial Airways Terminus.

**S. Morris, *Portland: An Illustrated History*, Dovecote Press, 1985**

**Quarries**

p.18: Drawing of Rufus Castle and ruins of St Andrews Church; squared blocks can be seen in background. S. Grimm, c.1791.

p. 24: Wooden hand crane at Durdle Pier lowering a boat. no date. [same as Trim, 1991, Fig 3]

p. 24: Two drawings of quarryman with tools and wedges, S. Grimm, c.1790

p. 31: Drawing of stone merchants or quarrymasters taking a meal break near Rufus Castle. S. Grimm, c.1790

p.33: Stone showing Wren's distinctive mark

p.55: Drawing of quarrying at Verne Yeates (Priory Corner crane behind?), c.1865.

p.95: Drawing of Convicts Quarry with overhead traveller, *ILN*, 1881.

p.101: Quarry gangs beside a hand crane crudely adapted to steam power in the 1890s. No location.

p.146: Lifting a stone block with dogs in an island quarry, 1960s. No location.

**Stone works**

p.97: Convicts in stone masonry yard. 1909.

p.147: Masons working on Corinthian capitals, Bottomcombe works, 1960s.

**Transport**

p.55: Drawing of horses and cart with stone + sledge descending hill. No date. (S.Grimm?)

p.56: Bottom of Merchants' Railway incline, c.1910

p.56: Top of Merchants' Railway incline with truck about to descend. No date.

p.57: Priory Corner, crane loading Merchants' Railway from traction engines. 1899.

p.58: Loading stone barges at Castletown Pier. 1899.

p.71: Merchants' Railway branch incline and bridges at Verne Yeates, c.1890.

p.123: Traction engine and two stone trailers descending New Road hill, dated

'between the wars'.

### **Railway**

p. 115: Easton Station. No date.

### **Foundry**

p.104: Casting in interior of Easton Foundry. 1905.

### **Windmills**

p.20: Drawing of north windmill tower with sails and tailpole.

### **Lighthouses**

p.37: Drawing of old Higher Lighthouse. No date.

p.38: Drawing of Lower Light, shortly after construction in 1789 (S.Grimm?)

p.118: Building Portland Lighthouse in 1905.

p.80: Upper Lighthouse, as rebuilt in 1869

p.80: Lower Lighthouse, as rebuilt in 1869

## **S. Morris, *Portland Camera*, Dovecote Press, 1990**

### **Quarries**

plate 11: Portland Bill, showing cranes and quarries near Pulpit Rock. 1936.

plate 12: View NE from top of Portland lighthouse, showing line of old tramway and quarry cranes at Butts and Cave Hole. 1930s.

plate 41: Cove House Inn, Chiswell, with cranes on skyline at Verne Yeates and Tout; also Tout tips. 1890.

plate 79: Hand crane and workers. N date or location.

plate 80: Tipping over cliff near Priory, with rail wagon. c.1870.

plate 81: Steam crane, converted from hand, with men. post 1890. No location.

plate 82: A.G. Coombes cutting first turf at Silklake. 6 June 1910.

plate 83: Three steel electric derricks (nearest by John A. Sangster, Aberdeen), 'by 1930s'. No location.

plate 84: Typical quarry gang , 7 men and 3 dogs. No date or location.

plate 85: Measuring and marking a stone block in paint. No date or location (near prison?)

plate 116. Vertical aerial photo of Verne also shows Tout, Kingbarrow, Withiescroft and part of Inmosthay quarries. 1972.

plate 128: Convicts at work in quarry near the Grove. No date. (same as Jackson, 1999, p.106 btm)

### **Stone works**

plate 99: Masons at Wide street works. 1920s.

plate 100: Easton Masonry Co. workforce; carved facade for Sainsbury wing of National gallery, 1989-90

plate 60: Aerial view of Easton, with railway, Bottomcombe works and France quarries. c.1960.

### **Transport**

plate 87: Priory Corner, with trucks and old crane. No date.

plate 88: Priory Corner derrick with traction engine and stones. post 1927.

plate 89: Team of Merchants' Railway horses with nosebags at Priory Corner. No date.

plate 90: Three traction engines delivering trailers of stones at Priory Corner crane. 1920s?

plate 91: Merchants' Railway at time of building Verne fort, 1877.

plate 92: Incline and bridges of Merchants' Railway branches below Kings Barrow. No date.

plate 93: Top of Merchants' Railway incline with loaded truck about to descend. No date.

plate 95: Bottom of Merchants' Railway incline at Castletown. No date.

plate 96: Stone pier at Castletown, looking inland. Stone trucks on quay. No date.

plate 98. Fleet of Bath & Portland Stone Firms lorries outside stone works. 1957.

plate 86: F.J. Barnes' 2-ft gauge loco *Excelsior* of 1898 and tipper wagons for overburden. No date. [same as Jackson, 1999, 130 (top)]

### **Windmills**

plate 107: 'Ploughing out by windmills', shows north tower behind, with stocks and sails and tailpole for turning cap. Not working. late 1890s?

## **S. Morris, *Portland Then and Now*, Dovecote Press, 2006**

### **Transport**

Plate 8a. Castletown stone pier, 1890s

Plate 12a. Castletown ships chandlers with rails in foreground, c1920

Plate 14a. Castletown Pier with line of loaded trucks + passenger steamer, n.d. [see Jackson, p48]

Plate 15a. top of incline with large stone on truck and supervisor Wm Mellish

Plate 16a. top of incline with truck beginning descent, c1905

Plate 17a. top of incline with truck and two men.

Plate 63a. Priory Corner with horses, crane and traction engines, c1899

Plate 63b. Priory Corner with trucks, crane and supervisor's cottage, n.d.

Plate 63c. Priory Corner today with re-erected crane and new road cutting, 2006

Plate 65a. Priory Corner with 1927 crane and traction engines, n.d.

Plate 63b. Priory Corner new roadworks, Oct 1996.

Plate 68a. Incline and bridges of Merchants' Railway branches below Kings Barrow.

Plate 33a Portland Station and Royal Victoria Hotel

Plate 136. Yeolands Bridge on E&CHRly

Plate 135a. Easton Station

### **Quarries**

Plate 97. Deep convict quarry at Grove, used for Borstal Games, 1936

Plate 134a. Coastal quarries from lighthouse tower, 1930s

Plate 133a. Bill Quarry, noon 27 September 1893

### **Stone Works**

Plate 92a. Portcrete Works in Wide Street, 1962/3

### **Waterworks**

Plate 10a. Folly Pier Waterworks

### **Gas works**

Plate 34a. Gas works entrance arch, late 1950s

### **General**

Plate 25a. Chiswell chapel

Plate 62a. Portland Steam Laundry (1902) in picture

Plate 40a. Victoria Gardens and bandstand 1904 after opening, with glimpse of Barnes stone yard and gas works

Plate 71a. well mechanism in Easton Square

Plate 72a. Unveiling clock tower in Easton Square, 1907

Plate 75. Easton Square, well mechanism and Wesleyan schoolroom, 1903

Plate 73a & 74a. Easton gardens bandstand (dismantled 1960s)

Plate 76a. new Easton Wesleyan Chapel in 1907

Plate 94a. Grove, Rodney House (1896-1908) and ventilator shaft

Plate 106a. Boathouse in Church Ope Cove c1880

Plate 115a. Weston C19 barns & stables for stone trade (redevel.1984)

### **Windmills**

Plate 117a. South or Angel Mill (new quarry made 1991)

Plate 116a. North Mill with sails, late C19

### **Lighthouses**

Plate 131. Building new lighthouse

Plate 132. Building new lighthouse in 1905

Plate 129. Old Higher Lighthouse in 1906.

Plate 130. Old Lower Lighthouse



**M. Smith, *Railways of the Isle of Portland*, Irwell Press, 1997**

*All photographs reproduced to a high quality. British Geological Survey prints also published in Stanier, 1995. Only the railway photographs relevant to the stone industry are listed here:*

**Quarries**

p.i: Suckthumb Quarry with steam cranes, etc, looking east. April 1930 [BGS]

p.2: Steam channeller at work in Bowers Quarry. April 1930 [BGS]

p.21: ridding at Suckthumb Quarry with tipper trucks on rails, April 1930 (poor caption) [BGS]

**Stone works**

p.iv: Rubbing a stone at Easton masonry works. April 1930. [BGS]

p.14 (btm): Bottomcombe works of B&PSFLtd with railway trucks and overhead traveller. April 1930.

p.14 (top): Masons' workshop at Easton: pulleys and wheels. April 1930. [BGS]

p.31 (btm): Portland Station, SE with sidings and F.J.Barnes' steam stone works [Lens of Sutton]

**Transport**

p.20: Traction engine of B&PSFLtd with two trailers + stone, at Easton. April 1930. [BGS]

p.14 (top): loading railway trucks at Quarry Tip siding, April 1930 [BGS]

p.iv (btm): Easton station, footbridge and train from the south, 1930s

p.2 (btm): truck with stone blocks descending Merchants' railway incline, n.d.

p.4: site of exchange sidings at Castletown, 16 Jan 1965

p.12 (top): Easton Station, looking north, c.1905-10 [J. Smith]

p.12 (btm): Easton Station, looking south, with train, c.1930s [J. Smith]

p.15 (btm): Easton Station, looking south, c.1905

p. 17 (btm): End of Easton & Church Hope Railway in stone cutting, n.d. [H.C. Casserley]

p.31 (btm): Portland Station, SE with sidings and F.J.Barnes' steam stone works [Lens of Sutton]

p.34/35 (top): Old Portland terminus with stone crane, 27 March 1965 [C. Caddy]

p.37: Footbridge at Easton Station, with train, looking N, 29 May 1939 [R.E. Tustin]

p.38: Goods loco at Easton, with footbridge and Bloomfield Tce, ,looking S, spring 1962 [C. Caddy]

**South Western Stone Co., *Portland Stone*, 1933**

**Quarries**

1. Typical section of a Portland stone quarry
3. Boring trial hole to ascertain depth of stone beds
4. First mechanical excavator introduced into Portland. 1933.
5. The excavator commencing to dig its way down. 1933.
6. Perryfields Quarry: beginning of ridding operations; shows rail mounted steam crane and railway siding behind
7. Perryfields Quarry: removing overburden, and a natural gully
8. Electric compressor and driller at work
9. Quarry after blasting cap
10. Drilling holes in cap by compressed air operated by electric compressor
11. Channelling by the aid of a quarry bar (drill and broach) to form an artificial joint
12. Removing the roach, between the cap and whitbed
13. Full size panel of Perrycot (H bed) showing beauty of the grain and fossil formation
14. General view of a Perryfields Quarry, showing removal of rubble and cap.
15. Stack building in Cottonfields Quarries, with stone works behind.
16. General quarry view with mechanical excavator, and 'built up stack'.

17. View of a Cottonfields Quarry, with beds above Portland stone. North windmill beyond.
18. Breston Quarries, with depth of Portland beds and an electric crane.
19. View along a gullet between stack and face.
20. View showing dividing line between overburden and stone below.
21. Natural gully and cavity with stalactite formation
22. Gully and natural bed planes
23. Separations of beds by horizontal risings, with pits for lifting
24. Preparing to lift rock along 'cockle bed'.
25. Wedges inserted between pigs in pits cut along horizontal bedding plane
26. Five men driving in wedges in pig pits
27. Rock being cut vertically by wedges and scales
28. Quarry dog being inserted in readiness for lifting block
29. Lifting block from shell rising with a dog, ready for slinging
30. Block being lifted by chain sling and 15-ton crane to surface level or quarry bank
31. Block being landed on quarry bank.
32. Two men scappling a block
33. Inspection of block before despatch
34. Block, showing identification marks, being landed for transportation. Perryfields H Quarry. Offices behind.
35. Perryfields Quarry, showing one of loading depots. Railway trucks behind

#### **Offices**

2. Quarry Offices at Portland (Perryfield House)

#### **Transport**

36. Loading direct from Cottonfields Quarry into railway trucks
37. Blocks from outlying quarries being motor hauled to Perryfields sidings
38. Making up a train load of Portland stone. Bottomcombe works behind
39. Train load of Portland stone leaving the quarries (at Cottonfields, probably backing down slope of siding to join main line)

### **P. Stanier, *Quarries and Quarrying*, Shire Publications, 1985**

#### **Quarries**

cover: Weston Quarry, with steel electric derrick. Not dated, but it is June 1984 [since backfilled]

p.7: Suckthumb Quarry, steam crane building a bench. April 1930 [BGS A4976]

### **P. Stanier, *Quarries of England and Wales*, Twelveheads Press, 1995**

*Photographs from British Geological Survey*

#### **Quarries**

p.74: Stone quarry at Easton: hand derrick and stones on railway truck. June 1912 [BGS A1419]

p.75: Longacre Quarry, looking WNW; six cranes. June 1912 [BGS A1422]

p.75: Quarry jack at Bowers Quarry, April 1930 [BGS A4972]

p.76: Suckthumb Quarry with steam cranes, etc, looking east. April 1930 [BGS A4952 ]

p.77: Silklake Quarry, 5 steel cranes, rubble but no face visible. April 1930 [BGS A4974]

p.77: Steam channeller at work in Bowers Quarry, cuts c.4ft deep. April 1930 [BGS A4981]

p.78: St Paul's Quarry, splitting a block with scales and wedges. April 1930 [BGS A4987]

#### **Stone works**

p.79: Bottomcombe works of B&PSFLtd with railway trucks and overhead traveller. April 1930. [BGS A4997]

p.80: Frame saw at Easton - sharp sand added. April 1930. [BGS A4998]  
p.80: Coulter planing machine at Easton. April 1930. [BGS A5004]  
p.81: Rubbing a stone at Easton masonry works. April 1930. [BGS A5006]  
p.82: Masons' workshop at Easton: pulleys and wheels. April 1930. [BGS A5008]

#### **Transport**

p.78: Traction engine of B&PSFLtd with two trailers + stone, at Easton. April 1930. [BGS A4995]

#### **P. Stanier, *Dorset's Industrial Heritage*, Twelveheads Press, 1989**

##### **Quarries**

p.31: Suckthumb Quarry, derelict timber hand crane, 1989 [P. Trim]

#### **P. Stanier, *Discover Dorset: The Industrial Past*, Dovecote Press, 1999**

##### **Quarries**

p.12: Longacre Quarry in 1912 [same as Stanier 1995, 75: BGS A1422]

##### **Transport**

p. 76: two old cranes at Longstone Ope.

#### **P. Trim, *The Quarrying of Portland Stone*, 1991**

##### **Quarries**

Fig 1: Pigs and wedges in place ready for 'reaming up'. No date or location.

Fig 2: Stone being split with scales and wedges. No date or location.

Fig 4: Coastal quarries at Portland Bill, looking s.w. at least 4 cranes. No lighthouse, so pre-1906

Fig 5. Cliff edge cranes at Pulpit rock and Portland Bill, with lighthouse. Earlier than Morris, 1990, plate 11

Fig 14. Convict quarries; no cranes; jack. Poor quality. No date.

Fig 15. Convict quarries with many cranes, postcard not dated.

Fig 16. Typical wooden hand derrick crane, with 4 men. No date.

Fig 19. Coastal quarries at Longstone Ope to Breston [ same as Jackson, 1999, 136 (btm)]

##### **Transport**

Fig 3: Wooden hand crane at Durdle Pier lowering a boat. No date. [same as Morris, 1985, p.24]

### **Appendix 5. Digital images of historic illustrations and photographs –not included**

This study has also included a digital compilation of over 200 of the most useful photographs and illustrations. This is ongoing.

## Appendix 6: oblique photographs

## ENGLISH HERITAGE - NATIONAL MONUMENTS RECORD

National Monuments Record - Library of Aerial Photography

Summary Report for Specialist Coversearch

Date: 15-March-2007

Customer Enquiry Reference No: **AP 11889**

NGR Index Number	Accession Number	Frame	Original Number	Copyright	Repository	Film Details	Date Flown	DF	6 Fig NGR
SY6768/1	CCC 8646	814	814	CRW		B Unknown	Black& white	24-Sep-24	1 SY678687
SY6768/2	NMR 15401	3		CRW	NMR	B 35 mm	Colour slide	05-Sep-95	1 SY676684
SY6768/3	NMR 15401	4		CRW	NMR	B 35 mm	Colour slide	05-Sep-95	1 SY679689
SY6768/4	NMR 15400	54		CRW	NMR	B 70mm,120,220	Black& white	05-Sep-95	1 SY677686
SY6768/5	NMR 15400	55		CRW	NMR	B 70mm,120,220	Black& white	05-Sep-95	1 SY678689
SY6768/11	NMR 23024	8		EHC	NMR	B 70mm,120,220	Black& white	31-Mar-03	1 SY677683
SY6768/12	NMR 23487	34		EHC	NMR	B 35 mm	Colour neg	15-Jun-04	1 SY676689
SY6768/13	NMR 23487	35		EHC	NMR	B 35 mm	Colour neg	15-Jun-04	1 SY678689
SY6768/14	NMR 23487	36		EHC	NMR	B 35 mm	Colour neg	15-Jun-04	1 SY678689
SY6768/15	NMR 23568	18		EHC	NMR	B 70mm,120,220	Colour neg	15-Jun-04	1 SY676686
SY6768/16	NMR 23568	19		EHC	NMR	B 70mm,120,220	Colour neg	15-Jun-04	1 SY677687
SY6768/17	NMR 23568	20		EHC	NMR	B 70mm,120,220	Colour neg	15-Jun-04	1 SY677685
SY6768/18	NMR 23568	21		EHC	NMR	B 70mm,120,220	Colour neg	15-Jun-04	1 SY678684
SY6768/19	NMR 23568	22		EHC	NMR	B 70mm,120,220	Colour neg	15-Jun-04	1 SY679684
SY6768/20	NMR 23568	23		EHC	NMR	B 70mm,120,220	Colour neg	15-Jun-04	1 SY676687
SY6768/21	NMR 23568	24		EHC	NMR	B 70mm,120,220	Colour neg	15-Jun-04	1 SY679688
SY6769/1	NMR 15401	2		CRW	NMR	B 35 mm	Colour slide	05-Sep-95	1 SY677690
SY6869/12	NMR 23487	37		EHC	NMR	B 35 mm	Colour neg	15-Jun-04	1 SY682690
SY6870/1	NMR 15559	20		CRW	NMR	B 70mm,120,220	Black& white	25-Jul-96	1 SY680700
SY6870/2	NMR 15559	21		CRW	NMR	B 70mm,120,220	Black& white	25-Jul-96	1 SY680700
SY6870/3	NMR 15559	22		CRW	NMR	B 70mm,120,220	Black& white	25-Jul-96	1 SY680700
SY6870/4	NMR 15552	28		CRW	NMR	B 35 mm	Colour slide	25-Jul-96	1 SY680700
SY6870/5	NMR 15552	29		CRW	NMR	B 35 mm	Colour slide	25-Jul-96	1 SY680700
SY6870/6	NMR 15552	30		CRW	NMR	B 35 mm	Colour slide	25-Jul-96	1 SY680700
SY6870/11	NMR 23569	1		EHC	NMR	B 70mm,120,220	Colour neg	15-Jun-04	1 SY689705

NGR Index Number	Accession Number	Frame	Original Number	Copyright	Repository	Film Details	Date Flown	DF	6 Fig NGR
SY6870/12	NMR 23569		2	EHC	NMR	B 70mm,120,220 Colour neg	15-Jun-04	1	SY688705
SY6870/13	NMR 23569		3	EHC	NMR	B 70mm,120,220 Colour neg	15-Jun-04	1	SY689705
SY6870/14	NMR 23569		7	EHC	NMR	B 70mm,120,220 Colour neg	15-Jun-04	1	SY688704
SY6870/15	NMR 23569		8	EHC	NMR	B 70mm,120,220 Colour neg	15-Jun-04	1	SY688704
SY6870/16	NMR 23569		14	EHC	NMR	B 70mm,120,220 Colour neg	15-Jun-04	1	SY689704
SY6873/1	CCC 8492		813	813 CRW	NMR	B Unknown Black& white			SY685737
SY6874/1	CCC 11769		812	812 CRW	NMR	V Unknown Black& white	07-Aug-23	1	SY685743
SY6874/2	CCC 8612		811	811 CRW	NMR	B Unknown Black& white	07-Aug-23	1	SY685743
SY6874/3	NMR 15559		10	CRW	NMR	B 70mm,120,220 Black& white	25-Jul-96	1	SY685743
SY6874/4	NMR 15559		11	CRW	NMR	B 70mm,120,220 Black& white	25-Jul-96	1	SY684743
SY6874/5	NMR 15559		12	CRW	NMR	B 70mm,120,220 Black& white	25-Jul-96	1	SY684743
SY6874/6	NMR 15552		20	CRW	NMR	B 35 mm Colour slide	25-Jul-96	1	SY684743
SY6874/7	NMR 15552		21	CRW	NMR	B 35 mm Colour slide	25-Jul-96	1	SY684743
SY6874/8	NMR 15552		22	CRW	NMR	B 35 mm Colour slide	25-Jul-96	1	SY684743
SY6874/9	NMR 15560		6	CRW	NMR	B 70mm,120,220 Black& white	25-Jul-96	1	SY684748
SY6874/10	NMR 15560		7	CRW	NMR	B 70mm,120,220 Black& white	25-Jul-96	1	SY684748
SY6874/11	NMR 15560		8	CRW	NMR	B 70mm,120,220 Black& white	25-Jul-96	1	SY684748
SY6874/12	NMR 15544		1	CRW	NMR	B 35 mm Colour slide	25-Jul-96	1	SY685745
SY6874/13	NMR 15544		3	CRW	NMR	B 35 mm Colour slide	25-Jul-96	1	SY685747
SY6970/13	NMR 23488		0	EHC	NMR	B 35 mm Colour neg	15-Jun-04	1	SY691702
SY6970/14	NMR 23488	0A		EHC	NMR	B 35 mm Colour neg	15-Jun-04	1	SY690704
SY6970/15	NMR 23488		1	EHC	NMR	B 35 mm Colour neg	15-Jun-04	1	SY691707
SY6970/16	NMR 23488		2	EHC	NMR	B 35 mm Colour neg	15-Jun-04	1	SY691708
SY6970/17	NMR 23569		4	EHC	NMR	B 70mm,120,220 Colour neg	15-Jun-04	1	SY691704
SY6970/18	NMR 23569		5	EHC	NMR	B 70mm,120,220 Colour neg	15-Jun-04	1	SY691704
SY6970/19	NMR 23569		6	EHC	NMR	B 70mm,120,220 Colour neg	15-Jun-04	1	SY692706
SY6970/20	NMR 23569		9	EHC	NMR	B 70mm,120,220 Colour neg	15-Jun-04	1	SY692707
SY6970/21	NMR 23569		11	EHC	NMR	B 70mm,120,220 Colour neg	15-Jun-04	1	SY693708
SY6970/22	NMR 23569		12	EHC	NMR	B 70mm,120,220 Colour neg	15-Jun-04	1	SY690707
SY6970/23	NMR 23569		13	EHC	NMR	B 70mm,120,220 Colour neg	15-Jun-04	1	SY690704

NGR Index Number	Accession Number	Frame	Original Number	Copyright	Repository	Film Details	Date Flown	DF	6 Fig NGR
SY6971/4	NMR 23024		4	EHC	NMR	B 70mm,120,220	Black& white	31-Mar-03	1 SY696711
SY6971/5	NMR 23024		5	EHC	NMR	B 70mm,120,220	Black& white	31-Mar-03	1 SY696711
SY6971/6	NMR 21989		13	EHC	NMR	B 35 mm	Colour neg	31-Mar-03	1 SY696711
SY6971/7	NMR 21989		14	EHC	NMR	B 35 mm	Colour neg	31-Mar-03	1 SY696711
SY6971/8	NMR 21989		15	EHC	NMR	B 35 mm	Colour neg	31-Mar-03	1 SY696711
SY6971/9	NMR 21989		16	EHC	NMR	B 35 mm	Colour neg	31-Mar-03	1 SY696711
SY6971/10	NMR 21989		17	EHC	NMR	B 35 mm	Colour neg	31-Mar-03	1 SY697711
SY6971/11	NMR 21989		18	EHC	NMR	B 35 mm	Colour neg	31-Mar-03	1 SY697711
SY6971/12	NMR 21989		19	EHC	NMR	B 35 mm	Colour neg	31-Mar-03	1 SY697711
SY6971/13	NMR 21989		20	EHC	NMR	B 35 mm	Colour neg	31-Mar-03	1 SY696711
SY6971/14	NMR 21989		21	EHC	NMR	B 35 mm	Colour neg	31-Mar-03	1 SY697711
SY6971/15	NMR 21989		22	EHC	NMR	B 35 mm	Colour neg	31-Mar-03	1 SY697711
SY6971/16	NMR 23569		10	EHC	NMR	B 70mm,120,220	Colour neg	15-Jun-04	1 SY692711
SY6973/1	NMR 15559		13	CRW	NMR	B 70mm,120,220	Black& white	25-Jul-96	1 SY692736
SY6973/2	NMR 15559		14	CRW	NMR	B 70mm,120,220	Black& white	25-Jul-96	1 SY692734
SY6973/3	NMR 15559		15	CRW	NMR	B 70mm,120,220	Black& white	25-Jul-96	1 SY691735
SY6973/4	NMR 15559		16	CRW	NMR	B 70mm,120,220	Black& white	25-Jul-96	1 SY693738
SY6973/5	NMR 15559		17	CRW	NMR	B 70mm,120,220	Black& white	25-Jul-96	1 SY693737
SY6973/6	NMR 15559		18	CRW	NMR	B 70mm,120,220	Black& white	25-Jul-96	1 SY693738
SY6973/7	NMR 15559		19	CRW	NMR	B 70mm,120,220	Black& white	25-Jul-96	1 SY693736
SY6973/8	NMR 15552		23	CRW	NMR	B 35 mm	Colour slide	25-Jul-96	1 SY691736
SY6973/9	NMR 15552		24	CRW	NMR	B 35 mm	Colour slide	25-Jul-96	1 SY691735
SY6973/10	NMR 15552		25	CRW	NMR	B 35 mm	Colour slide	25-Jul-96	1 SY692735
SY6973/11	NMR 15552		26	CRW	NMR	B 35 mm	Colour slide	25-Jul-96	1 SY694735
SY6973/12	NMR 15552		27	CRW	NMR	B 35 mm	Colour slide	25-Jul-96	1 SY693737
SY6974/1	NMR 15560		9	CRW	NMR	B 70mm,120,220	Black& white	25-Jul-96	1 SY693743
SY6974/2	NMR 15560		10	CRW	NMR	B 70mm,120,220	Black& white	25-Jul-96	1 SY693743
SY6974/3	NMR 15544		4	CRW	NMR	B 35 mm	Colour slide	25-Jul-96	1 SY694745
SY6974/8	NMR 23569		15	EHC	NMR	B 70mm,120,220	Colour neg	15-Jun-04	1 SY691747
SY6974/9	NMR 23569		16	EHC	NMR	B 70mm,120,220	Colour neg	15-Jun-04	1 SY690748

NGR Index Number	Accession Number	Frame	Original Number	Copyright	Repository	Film Details	Date Flown	DF	6 Fig NGR
SY6974/10	NMR 23569		17	EHC	NMR	B 70mm,120,220	Colour neg	15-Jun-04	1 SY692748
SY7072/1	NMR 15559		23	CRW	NMR	B 70mm,120,220	Black& white	25-Jul-96	1 SY702723
SY7072/2	NMR 15559		24	CRW	NMR	B 70mm,120,220	Black& white	25-Jul-96	1 SY702722
SY7072/3	NMR 15552		31	CRW	NMR	B 35 mm	Colour slide	25-Jul-96	1 SY702723
SY7072/4	NMR 15552		32	CRW	NMR	B 35 mm	Colour slide	25-Jul-96	1 SY702723
SY7072/5	NMR 15552		33	CRW	NMR	B 35 mm	Colour slide	25-Jul-96	1 SY702722
SY7072/6	NMR 15552		34	CRW	NMR	B 35 mm	Colour slide	25-Jul-96	1 SY700724
SY7072/7	NMR 15560		1	CRW	NMR	B 70mm,120,220	Black& white	25-Jul-96	1 SY703723
SY7072/8	NMR 15560		2	CRW	NMR	B 70mm,120,220	Black& white	25-Jul-96	1 SY702723
SY7072/9	NMR 15560		3	CRW	NMR	B 70mm,120,220	Black& white	25-Jul-96	1 SY702723
SY7072/10	NMR 15560		4	CRW	NMR	B 70mm,120,220	Black& white	25-Jul-96	1 SY702723
SY7072/11	NMR 15560		5	CRW	NMR	B 70mm,120,220	Black& white	25-Jul-96	1 SY702723

**Total 97 Records**



## ENGLISH HERITAGE - NATIONAL MONUMENTS RECORD

National Monuments Record - Library of Aerial Photography

Summary Report for Military Oblique Coversearch

Date: 15-March-2007

Customer Enquiry Reference No: **AP 11889**

NGR Index Number	Accession Number	Frame	Original Number	Copyright	Repository	Film Details		Date Flown	DF	6 Fig NGR
SY6774/3	RAF 30099	PO-0125	CAL/UK/16	RAF	MOD	R 5x5"	Black& white	07-May-48	1	SY679745
SY6874/15	RAF 30099	PO-0126	CAL/UK/16	RAF	MOD	R 5x5"	Black& white	07-May-48	1	SY683742
SY6873/4	RAF 30099	PO-0127	CAL/UK/16	RAF	MOD	R 5x5"	Black& white	07-May-48	1	SY686739
SY6873/5	RAF 30099	PO-0128	CAL/UK/16	RAF	MOD	R 5x5"	Black& white	07-May-48	1	SY689734
SY6872/1	RAF 30099	PO-0129	CAL/UK/16	RAF	MOD	R 5x5"	Black& white	07-May-48	1	SY689724
SY6871/1	RAF 30099	PO-0130	CAL/UK/16	RAF	MOD	R 5x5"	Black& white	07-May-48	1	SY687719
SY6871/2	RAF 30099	PO-0131	CAL/UK/16	RAF	MOD	R 5x5"	Black& white	07-May-48	1	SY685718
SY6871/3	RAF 30099	PO-0132	CAL/UK/16	RAF	MOD	R 5x5"	Black& white	07-May-48	1	SY684714
SY6871/4	RAF 30099	PO-0133	CAL/UK/16	RAF	MOD	R 5x5"	Black& white	07-May-48	1	SY682713
SY6870/7	RAF 30099	PO-0134	CAL/UK/16	RAF	MOD	R 5x5"	Black& white	07-May-48	1	SY686708
SY6870/8	RAF 30099	PO-0135	CAL/UK/16	RAF	MOD	R 5x5"	Black& white	07-May-48	1	SY685703
SY6869/1	RAF 30099	PO-0136	CAL/UK/16	RAF	MOD	R 5x5"	Black& white	07-May-48	1	SY684698
SY6869/2	RAF 30099	PO-0137	CAL/UK/16	RAF	MOD	R 5x5"	Black& white	07-May-48	1	SY682695
SY6869/3	RAF 30099	PO-0138	CAL/UK/16	RAF	MOD	R 5x5"	Black& white	07-May-48	1	SY680691
SY6868/1	RAF 30099	PO-0139	CAL/UK/16	RAF	MOD	R 5x5"	Black& white	07-May-48	1	SY680687
SY6868/2	RAF 30099	PO-0140	CAL/UK/16	RAF	MOD	R 5x5"	Black& white	07-May-48	1	SY681686
SY6868/3	RAF 30102	PO-0001	541/454	RAF	MOD	R 5x5"	Black& white	07-Mar-50	1	SY681688
SY6868/4	RAF 30102	PO-0002	541/454	RAF	MOD	R 5x5"	Black& white	07-Mar-50	1	SY682689
SY6869/4	RAF 30102	PO-0003	541/454	RAF	MOD	R 5x5"	Black& white	07-Mar-50	1	SY683690
SY6869/5	RAF 30102	PO-0004	541/454	RAF	MOD	R 5x5"	Black& white	07-Mar-50	1	SY685691
SY6869/6	RAF 30102	PO-0005	541/454	RAF	MOD	R 5x5"	Black& white	07-Mar-50	1	SY686693
SY6869/7	RAF 30102	PO-0006	541/454	RAF	MOD	R 5x5"	Black& white	07-Mar-50	1	SY687694
SY6869/8	RAF 30102	PO-0007	541/454	RAF	MOD	R 5x5"	Black& white	07-Mar-50	1	SY688695
SY6869/9	RAF 30102	PO-0008	541/454	RAF	MOD	R 5x5"	Black& white	07-Mar-50	1	SY689696

NGR Index Number	Accession Number	Frame	Original Number	Copyright	Repository	Film Details	Date Flown	DF	6 Fig NGR
SY6969/1	RAF 30102	PO-0009	541/454	RAF	MOD	R 5x5"	Black& white	07-Mar-50	1 SY690698
SY6970/1	RAF 30102	PO-0010	541/454	RAF	MOD	R 5x5"	Black& white	07-Mar-50	1 SY691701
SY6970/2	RAF 30102	PO-0011	541/454	RAF	MOD	R 5x5"	Black& white	07-Mar-50	1 SY692702
SY6970/3	RAF 30102	PO-0012	541/454	RAF	MOD	R 5x5"	Black& white	07-Mar-50	1 SY693704
SY6970/4	RAF 30102	PO-0013	541/454	RAF	MOD	R 5x5"	Black& white	07-Mar-50	1 SY694705
SY6970/5	RAF 30102	PO-0014	541/454	RAF	MOD	R 5x5"	Black& white	07-Mar-50	1 SY695706
SY6970/6	RAF 30102	PO-0015	541/454	RAF	MOD	R 5x5"	Black& white	07-Mar-50	1 SY696708
SY6970/7	RAF 30102	PO-0016	541/454	RAF	MOD	R 5x5"	Black& white	07-Mar-50	1 SY697709
SY6971/1	RAF 30102	PO-0017	541/454	RAF	MOD	R 5x5"	Black& white	07-Mar-50	1 SY698710
SY7071/1	RAF 30102	PO-0018	541/454	RAF	MOD	R 5x5"	Black& white	07-Mar-50	1 SY700711
SY7071/2	RAF 30102	PO-0019	541/454	RAF	MOD	R 5x5"	Black& white	07-Mar-50	1 SY701713
SY7071/3	RAF 30102	PO-0020	541/454	RAF	MOD	R 5x5"	Black& white	07-Mar-50	1 SY702715
SY7071/4	RAF 30102	PO-0021	541/454	RAF	MOD	R 5x5"	Black& white	07-Mar-50	1 SY703716
SY7071/5	RAF 30102	PO-0022	541/454	RAF	MOD	R 5x5"	Black& white	07-Mar-50	1 SY703718
SY7071/6	RAF 30102	PO-0023	541/454	RAF	MOD	R 5x5"	Black& white	07-Mar-50	1 SY703719
SY7072/12	RAF 30102	PO-0024	541/454	RAF	MOD	R 5x5"	Black& white	07-Mar-50	1 SY703721
SY7072/13	RAF 30102	PO-0025	541/454	RAF	MOD	R 5x5"	Black& white	07-Mar-50	1 SY703723
SY7072/14	RAF 30102	PO-0026	541/454	RAF	MOD	R 5x5"	Black& white	07-Mar-50	1 SY702725
SY7072/15	RAF 30102	PO-0027	541/454	RAF	MOD	R 5x5"	Black& white	07-Mar-50	1 SY702726
SY7072/16	RAF 30102	PO-0028	541/454	RAF	MOD	R 5x5"	Black& white	07-Mar-50	1 SY701728
SY7072/17	RAF 30102	PO-0029	541/454	RAF	MOD	R 5x5"	Black& white	07-Mar-50	1 SY700729
SY7073/1	RAF 30102	PO-0030	541/454	RAF	MOD	R 5x5"	Black& white	07-Mar-50	1 SY700730
SY6973/13	RAF 30102	PO-0031	541/454	RAF	MOD	R 5x5"	Black& white	07-Mar-50	1 SY699731
SY6973/14	RAF 30102	PO-0032	541/454	RAF	MOD	R 5x5"	Black& white	07-Mar-50	1 SY699733
SY6973/15	RAF 30102	PO-0033	541/454	RAF	MOD	R 5x5"	Black& white	07-Mar-50	1 SY698733
SY6973/16	RAF 30102	PO-0034	541/454	RAF	MOD	R 5x5"	Black& white	07-Mar-50	1 SY698735
SY6973/17	RAF 30102	PO-0035	541/454	RAF	MOD	R 5x5"	Black& white	07-Mar-50	1 SY697735
SY6973/18	RAF 30102	PO-0036	541/454	RAF	MOD	R 5x5"	Black& white	07-Mar-50	1 SY697737
SY6973/19	RAF 30102	PO-0037	541/454	RAF	MOD	R 5x5"	Black& white	07-Mar-50	1 SY696738
SY6973/20	RAF 30102	PO-0038	541/454	RAF	MOD	R 5x5"	Black& white	07-Mar-50	1 SY694739

NGR Index Number	Accession Number	Frame	Original Number	Copyright	Repository	Film Details	Date Flown	DF	6 Fig NGR
SY6974/4	RAF 30102	PO-0039	541/454	RAF	MOD	R 5x5"	Black& white	07-Mar-50	1 SY693740
SY6974/5	RAF 30102	PO-0040	541/454	RAF	MOD	R 5x5"	Black& white	07-Mar-50	1 SY692741
SY6974/6	RAF 30102	PO-0041	541/454	RAF	MOD	R 5x5"	Black& white	07-Mar-50	1 SY690741
SY6874/16	RAF 30102	PO-0042	541/454	RAF	MOD	R 5x5"	Black& white	07-Mar-50	1 SY688743
SY6874/17	RAF 30102	PO-0043	541/454	RAF	MOD	R 5x5"	Black& white	07-Mar-50	1 SY686743
SY6874/18	RAF 30102	PO-0044	541/454	RAF	MOD	R 5x5"	Black& white	07-Mar-50	1 SY681743
SY6774/4	RAF 30102	PO-0045	541/454	RAF	MOD	R 5x5"	Black& white	07-Mar-50	1 SY679743
SY6871/5	RAF 30182	PSFO-0014	541/485	RAF	MOD	R 5x5"	Black& white	08-Apr-50	1 SY683717
SY6871/6	RAF 30182	PSFO-0015	541/485	RAF	MOD	R 5x5"	Black& white	08-Apr-50	1 SY685714
SY6871/7	RAF 30182	PSFO-0016	541/485	RAF	MOD	R 5x5"	Black& white	08-Apr-50	1 SY688715
SY6971/2	RAF 30182	PSFO-0017	541/485	RAF	MOD	R 5x5"	Black& white	08-Apr-50	1 SY692714
SY6872/2	RAF 30182	PSFO-0018	541/485	RAF	MOD	R 5x5"	Black& white	08-Apr-50	1 SY686722
SY6872/3	RAF 30182	PSFO-0019	541/485	RAF	MOD	R 5x5"	Black& white	08-Apr-50	1 SY686720
SY6872/4	RAF 30182	PSFO-0020	541/485	RAF	MOD	R 5x5"	Black& white	08-Apr-50	1 SY687726
SY6872/5	RAF 30182	PSFO-0021	541/485	RAF	MOD	R 5x5"	Black& white	08-Apr-50	1 SY685724
SY6872/6	RAF 30182	PSFO-0022	541/485	RAF	MOD	R 5x5"	Black& white	08-Apr-50	1 SY682724
SY6872/7	RAF 30182	PSFO-0023	541/485	RAF	MOD	R 5x5"	Black& white	08-Apr-50	1 SY680725
SY6872/13	RAF 30188	PSFO-0001	541/401	RAF	MOD	R 5x5"	Black& white	15-Nov-49	1 SY685728
SY6872/14	RAF 30188	PSFO-0002	541/401	RAF	MOD	R 5x5"	Black& white	15-Nov-49	1 SY685728
SY6872/15	RAF 30188	PSFO-0003	541/401	RAF	MOD	R 5x5"	Black& white	15-Nov-49	1 SY685728
SY6872/16	RAF 30188	PSFO-0004	541/401	RAF	MOD	R 5x5"	Black& white	15-Nov-49	1 SY685728
SY6970/8	RAF 30202	PSFO-0019	541/192	RAF	MOD	R 5x5"	Black& white	04-Nov-48	1 SY692703
SY6970/9	RAF 30202	PSFO-0020	541/192	RAF	MOD	R 5x5"	Black& white	04-Nov-48	1 SY693704
SY6970/10	RAF 30202	PSFO-0021	541/192	RAF	MOD	R 5x5"	Black& white	04-Nov-48	1 SY694705
SY6970/11	RAF 30202	PSFO-0022	541/192	RAF	MOD	R 5x5"	Black& white	04-Nov-48	1 SY695706
SY6970/12	RAF 30202	PSFO-0023	541/192	RAF	MOD	R 5x5"	Black& white	04-Nov-48	1 SY696708
SY6971/3	RAF 30202	PSFO-0024	541/192	RAF	MOD	R 5x5"	Black& white	04-Nov-48	1 SY697711
SY7071/7	RAF 30202	PSFO-0025	541/192	RAF	MOD	R 5x5"	Black& white	04-Nov-48	1 SY700712
SY7071/8	RAF 30202	PSFO-0026	541/192	RAF	MOD	R 5x5"	Black& white	04-Nov-48	1 SY703713
SY6774/8	RAF 30206	PSFO-0108	541/166	RAF	MOD	R 5x5"	Black& white	13-Sep-48	1 SY676744

NGR Index Number	Accession Number	Frame	Original Number	Copyright	Repository	Film Details	Date Flown	DF	6 Fig NGR
SY6774/9	RAF 30206	PSFO-0109	541/166	RAF	MOD	R 5x5"	Black& white	13-Sep-48	1 SY677742
SY6873/6	RAF 30206	PSFO-0117	541/166	RAF	MOD	R 5x5"	Black& white	13-Sep-48	1 SY683730
SY6872/8	RAF 30206	PSFO-0118	541/166	RAF	MOD	R 5x5"	Black& white	13-Sep-48	1 SY682728
SY6872/9	RAF 30206	PSFO-0119	541/166	RAF	MOD	R 5x5"	Black& white	13-Sep-48	1 SY681726
SY6872/10	RAF 30206	PSFO-0120	541/166	RAF	MOD	R 5x5"	Black& white	13-Sep-48	1 SY681724
SY6872/11	RAF 30206	PSFO-0121	541/166	RAF	MOD	R 5x5"	Black& white	13-Sep-48	1 SY681722
SY6872/12	RAF 30206	PSFO-0122	541/166	RAF	MOD	R 5x5"	Black& white	13-Sep-48	1 SY681720
SY6771/1	RAF 30206	PSFO-0123	541/166	RAF	MOD	R 5x5"	Black& white	13-Sep-48	1 SY679718
SY6771/2	RAF 30206	PSFO-0124	541/166	RAF	MOD	R 5x5"	Black& white	13-Sep-48	1 SY678715
SY6771/3	RAF 30206	PSFO-0125	541/166	RAF	MOD	R 5x5"	Black& white	13-Sep-48	1 SY678713
SY6771/4	RAF 30206	PSFO-0126	541/166	RAF	MOD	R 5x5"	Black& white	13-Sep-48	1 SY679711
SY6770/1	RAF 30206	PSFO-0127	541/166	RAF	MOD	R 5x5"	Black& white	13-Sep-48	1 SY679709
SY6770/2	RAF 30206	PSFO-0128	541/166	RAF	MOD	R 5x5"	Black& white	13-Sep-48	1 SY679707
SY6770/3	RAF 30206	PSFO-0129	541/166	RAF	MOD	R 5x5"	Black& white	13-Sep-48	1 SY678704
SY6770/4	RAF 30206	PSFO-0130	541/166	RAF	MOD	R 5x5"	Black& white	13-Sep-48	1 SY678702
SY6770/5	RAF 30206	PSFO-0131	541/166	RAF	MOD	R 5x5"	Black& white	13-Sep-48	1 SY678700
SY6769/2	RAF 30206	PSFO-0132	541/166	RAF	MOD	R 5x5"	Black& white	13-Sep-48	1 SY678698
SY6769/3	RAF 30206	PSFO-0133	541/166	RAF	MOD	R 5x5"	Black& white	13-Sep-48	1 SY678696
SY6769/4	RAF 30206	PSFO-0134	541/166	RAF	MOD	R 5x5"	Black& white	13-Sep-48	1 SY677694
SY6768/6	RAF 30206	PSFO-0138	541/166	RAF	MOD	R 5x5"	Black& white	13-Sep-48	1 SY675685
SY6768/7	RAF 30206	PSFO-0139	541/166	RAF	MOD	R 5x5"	Black& white	13-Sep-48	1 SY676683
SY6768/8	RAF 30206	PSFO-0140	541/166	RAF	MOD	R 5x5"	Black& white	13-Sep-48	1 SY677682
SY6874/19	RAF 30300	PSFO-0001	541/T/52	RAF	FDR	R 5x5"	Black& white	12-Oct-50	1 SY685744
SY6874/20	RAF 30300	PSFO-0002	541/T/52	RAF	FDR	R 5x5"	Black& white	12-Oct-50	1 SY688742
SY6873/7	RAF 30300	PSFO-0003	541/T/52	RAF	FDR	R 5x5"	Black& white	12-Oct-50	1 SY689739
SY6873/8	RAF 30300	PSFO-0004	541/T/52	RAF	FDR	R 5x5"	Black& white	12-Oct-50	1 SY689736
SY6973/21	RAF 30300	PSFO-0005	541/T/52	RAF	FDR	R 5x5"	Black& white	12-Oct-50	1 SY691734
SY6973/22	RAF 30300	PSFO-0006	541/T/52	RAF	FDR	R 5x5"	Black& white	12-Oct-50	1 SY693733
SY6768/9	RAF 30300	PSFO-0009	541/T/52	RAF	FDR	R 5x5"	Black& white	12-Oct-50	1 SY675685
SY6768/10	RAF 30300	PSFO-0010	541/T/52	RAF	FDR	R 5x5"	Black& white	12-Oct-50	1 SY677683

NGR Index Number	Accession Number	Frame	Original Number	Copyright	Repository	Film Details	Date Flown	DF	6 Fig NGR
SY6769/5	RAF 30300	PSFO-0011	541/T/52	RAF	FDR	R 5x5"	Black& white	12-Oct-50	1 SY676692
SY6769/6	RAF 30300	PSFO-0012	541/T/52	RAF	FDR	R 5x5"	Black& white	12-Oct-50	1 SY677692
SY6973/23	RAF 30300	PSFO-0013	541/T/52	RAF	FDR	R 5x5"	Black& white	12-Oct-50	1 SY692737
SY6874/21	RAF 30300	PSFO-0014	541/T/52	RAF	FDR	R 5x5"	Black& white	12-Oct-50	1 SY683749
SY6874/22	RAF 30300	PSFO-0015	541/T/52	RAF	FDR	R 5x5"	Black& white	12-Oct-50	1 SY685747
SY6874/23	RAF 30300	PSFO-0016	541/T/52	RAF	FDR	R 5x5"	Black& white	12-Oct-50	1 SY685745
SY6874/24	RAF 30300	PSFO-0017	541/T/52	RAF	FDR	R 5x5"	Black& white	12-Oct-50	1 SY685742
SY6874/25	RAF 30300	PSFO-0018	541/T/52	RAF	FDR	R 5x5"	Black& white	12-Oct-50	1 SY685740
SY6873/9	RAF 30300	PSFO-0019	541/T/52	RAF	FDR	R 5x5"	Black& white	12-Oct-50	1 SY686738
SY6873/10	RAF 30300	PSFO-0020	541/T/52	RAF	FDR	R 5x5"	Black& white	12-Oct-50	1 SY687736
SY6873/11	RAF 30300	PSFO-0021	541/T/52	RAF	FDR	R 5x5"	Black& white	12-Oct-50	1 SY688734
SY6974/7	RAF 30300	PSFO-0022	541/T/52	RAF	FDR	R 5x5"	Black& white	12-Oct-50	1 SY699741
SY6874/14	MSO 31233	PO-48	1416/S386H	52 RAF	FDM	M 5x5"	Black& white	09-Aug-41	1 SY680744
SY6873/2	MSO 31233	PO-50	1416/S386H	52 RAF	FDM	M 5x5"	Black& white	09-Aug-41	1 SY684738
SY6873/3	MSO 31233	PO-52	1416/S386H	52 RAF	FDM	M 5x5"	Black& white	09-Aug-41	1 SY686731

**Total 129 Records**

## Appendix 7: vertical photographs

## ENGLISH HERITAGE - NATIONAL MONUMENTS RECORD

National Monuments Record - Library of Aerial Photography

Summary Report for Vertical Coversearch

Date: 15-March-2007

Customer Enquiry Reference No: **AP 11889**

Sortie Number	Library Number	Cam Pos	Start Frame	End Frame	Held	National Start	Reference End	Date	Date Flag	Quality	Scale	Focal Length	Format	Repository	Copyright
RAF/CPE/UK/1821	501	FP	1407	1411	P	SY700739	SY680733	04-Nov-46	1	A	10000	36	BW87	MOD	RAF
RAF/CPE/UK/1821	501	RP	3426	3426	P	SY679757	SY679757	04-Nov-46	1	A	10000	36	BW87	MOD	RAF
RAF/CPE/UK/1824	502	RP	3228	3230	P	SY708726	SY704742	04-Nov-46	1	AB	9840	20	BW87	MOD	RAF
RAF/CPE/UK/2494	791	RS	4157	4159	N	SY692752	SY703745	11-Mar-48	1	A	10000	20	BW87	MOD	RAF
RAF/540/457	1153	RP	3061	3064	P	SY696719	SY676721	17-Apr-51	1	A	10000	20	BW87	MOD	RAF
RAF/540/457	1153	RP	3068	3072	P	SY678736	SY703737	17-Apr-51	1	A	10000	20	BW87	MOD	RAF
RAF/540/457	1153	RP	3079	3081	P	SY687697	SY674698	17-Apr-51	1	A	10000	20	BW87	MOD	RAF
RAF/540/457	1153	RP	3085	3087	P	SY679704	SY692703	17-Apr-51	1	A	10000	20	BW87	MOD	RAF
RAF/540/457	1153	RP	3093	3097	P	SY706733	SY679729	17-Apr-51	1	A	10000	20	BW87	MOD	RAF
RAF/540/457	1153	RS	4061	4064	P	SY695741	SY675741	17-Apr-51	1	A	10000	20	BW87	MOD	RAF
RAF/540/457	1153	RS	4068	4072	P	SY679716	SY706719	17-Apr-51	1	A	10000	20	BW87	MOD	RAF
RAF/540/457	1153	RS	4078	4080	P	SY692717	SY677718	17-Apr-51	1	A	10000	20	BW87	MOD	RAF
RAF/540/457	1153	RS	4085	4085	P	SY679684	SY679684	17-Apr-51	1	A	10000	20	BW87	MOD	RAF
RAF/540/457	1153	RS	4095	4096	P	SY689751	SY683749	17-Apr-51	1	A	10000	20	BW87	MOD	RAF
RAF/543/1392	2133	F41	9	12	N	SY697747	SY678748	03-Aug-61	1	AB	10000	20	BW87	NMR	CRW
RAF/543/1392	2133	F41	20	24	P	SY677728	SY705728	03-Aug-61	1	AB	10000	20	BW87	NMR	CRW
RAF/543/1392	2133	F42	53	56	P	SY672705	SY694705	03-Aug-61	1	AB	10000	20	BW87	NMR	CRW
RAF/543/1392	2133	F43	53	55	P	SY673684	SY683683	03-Aug-61	1	AB	10000	20	BW87	NMR	CRW
RAF/543/2334	2172	1F21	7	12	P	SY706720	SY676744	29-Jul-63	1	AB	14000	36	BW87	NMR	CRW
RAF/541/487	2609	RP	3001	3006	P	SY680704	SY686729	11-Apr-50	1	AB	5000	20	BW87	MOD	RAF
RAF/541/487	2609	RP	3007	3008	N	SY686734	SY687738	11-Apr-50	1	AB	5000	20	BW87	MOD	RAF
RAF/541/487	2609	RP	3009	3009	N	SY680701	SY680701	11-Apr-50	1	AB	5000	20	BW87	MOD	RAF
RAF/541/487	2609	RP	3010	3015	P	SY680706	SY680733	11-Apr-50	1	AB	5000	20	BW87	MOD	RAF
RAF/541/487	2609	RP	3016	3018	N	SY680738	SY680747	11-Apr-50	1	AB	5000	20	BW87	MOD	RAF
RAF/541/487	2609	RP	3019	3020	N	SY683697	SY684702	11-Apr-50	1	AB	5000	20	BW87	MOD	RAF

Sortie Number	Library Number	Cam Pos	Start Frame	End Frame	Held	National Start	Reference End	Date	Date Flag	Quality	Scale	Focal Length	Format	Repository	Copyright
RAF/541/487	2609	RP	3021	3025	P	SY685708	SY687728	11-Apr-50	1	AB	5000	20	BW87	MOD	RAF
RAF/541/487	2609	RP	3026	3029	N	SY687733	SY687748	11-Apr-50	1	AB	5000	20	BW87	MOD	RAF
RAF/541/487	2609	RS	4001	4006	P	SY689704	SY694729	11-Apr-50	1	AB	5000	20	BW87	MOD	RAF
RAF/541/487	2609	RS	4007	4008	N	SY694734	SY695738	11-Apr-50	1	AB	5000	20	BW87	MOD	RAF
RAF/541/487	2609	RS	4009	4013	P	SY688701	SY688722	11-Apr-50	1	AB	5000	20	BW87	MOD	RAF
RAF/541/487	2609	RS	4014	4018	N	SY688727	SY689747	11-Apr-50	1	AB	5000	20	BW87	MOD	RAF
RAF/541/487	2609	RS	4019	4024	P	SY692698	SY695724	11-Apr-50	1	AB	5000	20	BW87	MOD	RAF
RAF/541/487	2609	RS	4025	4029	N	SY695729	SY695748	11-Apr-50	1	AB	5000	20	BW87	MOD	RAF
RAF/541/385	2635	RP	3001	3006	P	SY698722	SY690734	08-Nov-49	1	A	5000	20	BW87	MOD	RAF
RAF/541/385	2635	RP	3007	3008	N	SY688736	SY686737	08-Nov-49	1	A	5000	20	BW87	MOD	RAF
RAF/541/385	2635	RP	3009	3010	N	SY700723	SY698720	08-Nov-49	1	A	5000	20	BW87	MOD	RAF
RAF/541/385	2635	RP	3011	3015	P	SY695718	SY687713	08-Nov-49	1	A	5000	20	BW87	MOD	RAF
RAF/541/385	2635	RP	3016	3018	P	SY691722	SY690714	08-Nov-49	1	A	5000	20	BW87	MOD	RAF
RAF/541/385	2635	RS	4001	4008	N	SY706729	SY693744	08-Nov-49	1	A	5000	20	BW87	MOD	RAF
RAF/541/385	2635	RS	4009	4009	N	SY695732	SY695732	08-Nov-49	1	A	5000	20	BW87	MOD	RAF
RAF/541/385	2635	RS	4010	4015	P	SY692729	SY680719	08-Nov-49	1	A	5000	20	BW87	MOD	RAF
RAF/541/385	2635	RS	4016	4018	P	SY681725	SY681716	08-Nov-49	1	A	5000	20	BW87	MOD	RAF
RAF/106G/UK/842	3515	V	5059	5065	P	SY701716	SY673742	25-Sep-45	1	AB	9600	20	BW87	FDR	RAF
MAL/68002	5377	V	1	8	P	SY681744	SY678680	26-Jan-68	1	A	11000	6	BW99	NMR	RES
MAL/68002	5377	V	10	16	P	SY694698	SY700738	26-Jan-68	1	A	11000	6	BW99	NMR	RES
MAL/68004	5378	V	23	26	P	SY680749	SY704727	01-Feb-68	1	A	11000	6	BW99	NMR	RES
MAL/68004	5378	V	81	88	P	SY680744	SY680680	01-Feb-68	1	A	11000	6	BW99	NMR	RES
MAL/68004	5378	V	90	93	P	SY698713	SY698744	01-Feb-68	1	A	11000	6	BW99	NMR	RES
RAF/HLA/521	8495	V	6017	6020	P	SY705736	SY686751	04-May-42	1	A	14000	14	BW55	FDM	RAF
OS/67010	10955	V	3	8	N	SY682740	SY682707	20-Mar-67	1	A	7000	12	BW99	NMR	CRW
OS/67010	10955	V	10	12	P	SY692698	SY692710	20-Mar-67	1	A	7000	12	BW99	NMR	CRW
OS/67010	10955	V	13	14	N	SY692716	SY693723	20-Mar-67	1	A	7000	12	BW99	NMR	CRW
OS/67010	10955	V	15	16	N	SY688719	SY689717	20-Mar-67	1	A	7000	12	BW99	NMR	CRW
OS/67010	10955	V	17	20	P	SY689714	SY688707	20-Mar-67	1	A	7000	12	BW99	NMR	CRW
OS/69154	10956	V	106	112	N	SY696734	SY694703	22-May-69	1	A	6200	12	BW99	NMR	CRW



Sortie Number	Library Number	Cam Pos	Start Frame	End Frame	Held	National Start	Reference End	Date	Date Flag	Quality	Scale	Focal Length	Format	Repository	Copyright
OS/69154	10956	V	113	121	N	SY686733	SY684690	22-May-69	1 A		6200	12	BW99	NMR	CRW
OS/71004	11257	V	53	57	N	SY692747	SY701721	07-Mar-71	1 A		7000	12	BW99	NMR	CRW
OS/71004	11257	V	58	58	P	SY704715	SY704715	07-Mar-71	1 A		7000	12	BW99	NMR	CRW
OS/71004	11257	V	59	63	N	SY689724	SY679750	07-Mar-71	1 A		7000	12	BW99	NMR	CRW
OS/87142	13165	V	2	7	N	SY692746	SY686693	18-Sep-87	1 A		11000	6	BW99	OS	CRW
OS/87142	13165	V	10	14	N	SY697742	SY693702	18-Sep-87	1 A		11000	6	BW99	OS	CRW
OS/87142	13165	V	17	18	N	SY704725	SY699716	18-Sep-87	1 A		11000	6	BW99	OS	CRW
OS/87142	13165	V	19	19	P	SY693708	SY693708	18-Sep-87	1 A		11000	6	BW99	OS	CRW
OS/87142	13165	V	20	22	N	SY687699	SY674683	18-Sep-87	1 A		11000	6	BW99	OS	CRW
OS/87142	13165	V	24	27	N	SY705719	SY693745	18-Sep-87	1 A		11000	6	BW99	OS	CRW
OS/87142	13165	V	32	36	N	SY675745	SY699715	18-Sep-87	1 A		11000	6	BW99	OS	CRW
OS/87142	13165	V	37	37	P	SY705708	SY705708	18-Sep-87	1 A		11000	6	BW99	OS	CRW
OS/87142	13165	V	38	45	N	SY684751	SY676683	18-Sep-87	1 A		11000	6	BW99	OS	CRW
OS/87143	13166	V	46	49	N	SY684748	SY682734	18-Sep-87	1 A		5500	12	BW99	OS	CRW
OS/87143	13166	V	50	54	P	SY682730	SY680712	18-Sep-87	1 A		5500	12	BW99	OS	CRW
OS/87143	13166	V	55	61	N	SY680707	SY676681	18-Sep-87	1 A		5500	12	BW99	OS	CRW
OS/87143	13166	V	62	66	N	SY691748	SY690729	18-Sep-87	1 A		5500	12	BW99	OS	CRW
OS/87143	13166	V	67	70	P	SY690725	SY688711	18-Sep-87	1 A		5500	12	BW99	OS	CRW
OS/87143	13166	V	71	73	N	SY688706	SY687697	18-Sep-87	1 A		5500	12	BW99	OS	CRW
OS/87143	13166	V	74	75	P	SY686692	SY685688	18-Sep-87	1 A		5500	12	BW99	OS	CRW
OS/87143	13166	V	77	82	N	SY698740	SY696717	18-Sep-87	1 A		5500	12	BW99	OS	CRW
OS/87143	13166	V	83	86	P	SY695713	SY693699	18-Sep-87	1 A		5500	12	BW99	OS	CRW

**Total 17 Sorties 324 Prints**

### Wiltshire Office

AC archaeology Ltd  
Manor Farm Stables  
Chicklade  
Hindon  
Nr Salisbury  
Wiltshire  
SP3 5SU

Telephone: 01747 820581  
Fax: 01747 820440

### Devon Office

AC archaeology Ltd  
Unit 4, Halthaies Workshops  
Bradninch  
Nr Exeter  
Devon  
EX5 4LQ

Telephone/Fax: 01392 882410

[www.acarchaeology.co.uk](http://www.acarchaeology.co.uk)