

HISTORIC BUILDING SURVEY REPORT:

BRUMBY RESOURCE CENTRE, BRUMBY, SCUNTHORPE, NORTH LINCOLNSHIRE

Planning Reference: PA/2015/0496

NGR: SE 90036 09666

AAL Site Code: BREC 15

North Lincolnshire Museum Site Code: BMAS

OASIS Reference Number: allenarc1-237801



Report prepared for North Lincolnshire Council

By
Allen Archaeology Limited
Report Number AAL2016006

January 2016



Allenarchaeology



Contents

Executive Summary	1
1.0 Introduction.....	2
2.0 Site Location and Description.....	2
3.0 Planning Background.....	2
4.0 Architectural and Historical Background.....	3
5.0 Methodology	3
6.0 Results	4
7.0 Discussion and Conclusions.....	10
8.0 Effectiveness of Methodology.....	11
9.0 Acknowledgements	11
10.0 References.....	11

List of Plates

Plate 1 (Shot 283): The exterior of Ashby House, looking north, east facing elevation.....	12
Plate 2 (shot 341): One of the office rooms in Ashby House, looking east.....	12
Plate 3 (shot 338): One of the larger classrooms in Ashby House, looking east.....	13
Plate 4 (shot 365): One of the lavatories in Ashby House, looking west	13
Plate 5 (shot 414): Courtyard of Ashby House, looking southwest.....	14
Plate 6 (shot 354): Eastern corridor of Ashby House, looking south	14
Plate 7 (shot 298): View of Barton House taken from the northeast looking southwest.....	15
Plate 8 (shot 293): The western extension of Barton House, taken from the west looking east ..	15
Plate 9 (shot 151): Eastern extension of Barton House, looking northwest.....	16
Plate 10 (shot 302): Inscribed pipe on the northern face of Barton House, looking south	16
Plate 11 (shot 129): Main corridor of Barton House, looking east.....	17
Plate 12 (shot 124): Main staircase of Barton House, looking southwest	17
Plate 13 (shot 96): Eastern extension to Barton House, entrance, looking southwest	18
Plate 14 (shot 95): Staircase in B1, looking west.....	18
Plate 15 (shot 98): Buildings main entrance is to the left and entrance to the rest of the building to the right. Looking west.....	19
Plate 16 (shot 100): Ground floor of Barton House which was in use as a canteen (B2). Looking north	19
Plate 17 (shot 103): View of catering units in B3, looking north.....	20
Plate 18 (shot 104): Tiled area in B3 looking southeast.....	20
Plate 19 (shot 106): Entrance to the south of B3, looking south	21
Plate 20 (shot 110): Storage spaces in B4, looking north.....	21
Plate 21 (shot 132): Tiled areas in B5, looking west.....	22
Plate 22 (shot 120): Photo of one of the wash rooms in B6, looking north.....	22
Plate 23 (shot 85): B7, probably used as a classroom or office, looking west	23
Plate 24 (shot 89): Barton House western extension housing the services for the main building, looking northeast	23
Plate 25 (shot 135): Extension of Barton House containing services for the main building, looking southwest.....	24
Plate 26 (shot 195): Corridor on the first floor of Barton House, looking west	24
Plate 27 (shot 178): Example of a lavatory in B9, looking north.....	25

Plate 28 (shot 181): Example of a wash room in B9, looking north	25
Plate 29 (shot 159): One of the larger rooms on the first floor of Barton House (B11), looking west	26
Plate 30 (shot 190): One of the larger rooms on the first floor of Barton House (B12), looking northeast	26
Plate 31 (shot 185): Supply of services to the first floor of Barton House, in B13, looking north .	27
Plate 32 (Shot 170): Small room in B10, possibly used for storage on account of its dimensions, looking south	27
Plate 33 (shot 193): A room from B15, an example of a smaller room from the first floor, looking southwest	28
Plate 34 (shot 198): Access point to crawl space behind the outer walls of the second floor of Barton House, looking northeast	28
Plate 35 (shot 208): Timber framed roof visible through crawl space, looking southwest	29
Plate 36 (shot 206): Water tank in one of the rooms on the second floor of Barton House, looking north	29
Plate 37 (shot 204): Metal extractors from the lower floors of Barton House found on the second floor, looking northeast.....	30
Plate 38 (shot 222): Room on second floor of Barton House with a dormer window, looking northeast	30
Plate 39 (shot 199): Built in wardrobe on second floor of Barton House, looking east.....	31
Plate 40 (shot 277): Crosby House, looking southeast.....	31
Plate 41 (shot 278): Prefabricated extension to the rear of Crosby House, looking east.....	32
Plate 42 (shot 276): Porch of Crosby House, note the change from stretcher bonding to English bonding either side of the downpipe, looking east.....	32
Plate 43 (shot 271): Showing extension at northeast end of Crosby House, looking northwest ..	33
Plate 44 (shot 262): Plant room in Crosby House, looking southeast.....	33
Plate 45 (shot 243): Reception room in the Crosby building, looking northwest.....	34
Plate 46 (shot 260): Crosby Building front office space with built in cupboards, looking northeast	34
Plate 47 (shot 246): One of the small office spaces in C3, looking northwest.....	35
Plate 48 (shot 250): Room in C3 which lacks plastered walls, looking northwest	35
Plate 49 (shot 256): Room in C4, looking southeast	36
Plate 50 (shot 325): Exterior of Dragonby building, looking west.....	36
Plate 51 (shot 333): View of western facing elevation of Dragonby House, looking east	37
Plate 52 (shot 327): View of both southern extensions to Dragonby House, looking west.....	37
Plate 53 (shot 331): West facing elevation showing an inserted window in the southern extension, looking east.....	38
Plate 54 (shot 330): The west facing elevation of the southern extension of Dragonby House, looking east	38
Plate 55 (shot 335): Northern extension of Dragonby House, looking southeast	39
Plate 56 (shot 24): Showing part of the large space in the main part of Dragonby House, looking southeast	39
Plate 57 (shot 23): Partition abutting fireplace in D1, looking south.....	40
Plate 58 (shot 18): Corridor running down the western extent of the original Dragonby building, looking south	40
Plate 59 (shot 11): Part of the original Dragonby building looking southwest. The entrance to the southern extensions can be seen to the left of the image.....	41
Plate 60 (shot 8): Bricked up semi-circular archway in the first southern extension of Dragonby Building. Looking east.....	41
Plate 61 (shot 1): View looking east of the second southern extension to Dragonby House (D3) 42	

Plate 62 (shot 38): One of three spaces which appear to have been in use as offices or similar in Dragonby House (D4), looking northeast	42
Plate 63 (shot 40): View of the reception room of Dragonby House (D4), looking north	43
Plate 64 (shot 305): Main entrance to Epworth House, looking southeast	43
Plate 65: Northern extension of Epworth House, looking west.....	44
Plate 66 (shot 316): An extension has been removed from the southern end of Epworth House, looking east	44
Plate 67 (shot 312): View of the extended elevation on the west facing elevation of Epworth House, looking east	45
Plate 68 (shot 318): View of the north-western facing elevation of Epworth House. The simple layout is indicative of its modernist design, looking northeast.....	45
Plate 69 (shot 306): External stairwell on Epworth House. Here bullnose bricks have been used to curve the edges of the doorway, looking southwest	46
Plate 70 (shot 304): Awning on the main entrance of Epworth House, looking southeast.....	46
Plate 71 (shot 50): View of the southern half of Epworth House looking northeast. The interior has been stripped of its partitions.	47
Plate 72 (shot 55): Sealed entrances to part of Epworth House, presumably due to the western extension providing access, looking northeast	47
Plate 73 (shot 54): Reception room opposite the main entrance to Epworth House, looking southeast.....	48
Plate 74 (shot 75): First floor of Epworth House, looking northwest	48
Plate 75 (shot 77): View of the timber roof structure of Epworth House taken from the first floor looking northeast	49
Plate 76 (shot 501): Goxhill House, looking southwest.....	49
Plate 77 (shot 286): Main entrance to Horkstow House, looking southeast	50
Plate 78 (shot 511): Courtyard of Horkstow House containing a water feature, looking southwest	50
Plate 79 (shot 291): View of Horkstow House looking north, showing the overhanging roof and porch.....	51
Plate 80 (shot 336): The Porters House, looking west	51

List of Appendices

Appendix 1: Colour Plates	12
Appendix 2: Photographic Archive List.....	52
Appendix 3: Figures	66

List of Figures

Figure 1: Site location outlined in red	66
Figure 2: Layout of site: Surveyed buildings (outlined in red).....	67
Figure 3: Ashby House, plan of ground floor (base map provided by client).....	68
Figure 4: Barton House, Goxhill House and Store plan of ground floor (base map provided by client).....	69
Figure 5: Barton House, plan of first floor (base map provided by client).....	70
Figure 6: Barton House, plan of second floor (base map provided by client).....	71
Figure 7: Crosby House, plan of ground floor (base map provided by client).....	72
Figure 8: Dragonby House and Porters House, plan of ground floor (base map provided by client)	73
Figure 9: Epworth House, plan of ground floor (base map provided by client).....	74

Figure 10: Epworth House, plan of first floor (base map provided by client) 75
 Figure 11: Horkstow House, plan of ground floor (base map provided by client) 76

Document Control

Element:	Name:	Date:
Report prepared by:	Catriona Cooper BA (Hons) MSc PhD	12/01/2016
Illustrations prepared by:	Catriona Cooper BA (Hons) MSc PhD	12/01/2016
Report edited by:	Chris Clay BA MA (Hons)	13/01/2016
Report reviewed by:	Mark Allen BSc (Hons) MCIfA	14/01/2016
Version no:	1.0	15/01/2016

Allen Archaeology reports are printed double sided on 100% recycled paper to reduce our carbon footprint.

Executive Summary

- Allen Archaeology Limited was commissioned by North Lincolnshire Council to undertake a historic building survey of Brumby Resource Centre, Brumby, Scunthorpe.
- Brumby Resource Centre is an early 20th century hospital which has been used as an infectious diseases hospital, a maternity hospital, and a resource centre for disabled members of the community. Some of the original fabric of the buildings have survived, including window sashes, roof structure, fireplaces, and heating apparatus. Later historical additions include plumbing fixtures, dropped ceilings, and double-glazed windows in the original hospital building.
- Several prefabricated buildings were added to the hospital site in the later part of the 20th century, and some extensions were made to the original hospital building, such as a kitchen.
- The survey made a detailed record of seven of the buildings on the site and a sample survey of one additional building on site.
- All of the buildings on the site have undergone redevelopment since their original construction. The internal fixtures and fittings have been modernised and in some buildings layouts have been changed meaning that the former use and layout of the buildings is not clear.

1.0 Introduction

- 1.1 Allen Archaeology Limited (hereafter AAL) was commissioned by North Lincolnshire Council to undertake a historic building survey of Brumby Resource Centre, Brumby, Scunthorpe, North Lincolnshire, prior to demolition of the buildings.
- 1.2 The works adhere to the national guidance set out in the Historic England document '*Understanding Historic Buildings: A guide to good recording practice*' (2006), and the Chartered Institute for Archaeologists '*Standard and guidance for the archaeological investigation and recording of standing buildings or structures*' (ClfA 2014).
- 1.3 The documentary and photographic archive will be submitted North Lincolnshire Museum where it will be stored under the museum site code BMAS.

2.0 Site Location and Description

- 2.1 Brumby is situated in the administrative district of North Lincolnshire Council, approximately 1.3km southeast of central Scunthorpe (Figure 1). The site consists of a hospital complex and series of playing fields, on the south side of East Common Lane, extending to c.3.39ha, and centred on SE 90036 09666.

3.0 Planning Background

- 3.1 A planning application has been submitted to North Lincolnshire Council for '*prior approval for the proposed demolition of all buildings within the former Brumby Hospital site except for the porter's lodge (former dwelling house) at the entrance to the site*' (Reference PA/2015/0496). A basic historic building record of the original hospital buildings and Historic England Level 2 photographic record was advised by North Lincolnshire Council prior to demolition.
- 3.2 The relevant planning policy which applies to the effect of development with regard to built heritage is Chapter 12: Conserving and Enhancing the Historic Environment of the National Planning Policy Framework (NPPF) (Department for Communities and Local Government 2012). This superseded Planning Policy Statement 5 (PPS5) (Department for Communities and Local Government 2010) in March 2012.
- 3.3 NPPF Chapter 12, paragraph 135 states that '*The effect of an application on the significance of a non-designated heritage asset should be taken into account in determining the application. In weighing applications that affect directly or indirectly non designated heritage assets, a balanced judgement will be required having regard to the scale of any harm or loss and the significance of the heritage asset.*'
- 3.4 NPPF Chapter 12, paragraph 141 states that '*Local planning authorities should make information about the significance of the historic environment gathered as part of plan-making or development management publicly accessible. They should also require developers to record and advance understanding of the significance of any heritage assets to be lost (wholly or in part) in a manner proportionate to their importance and the impact, and to make this evidence (and any archive generated) publicly accessible. However, the ability to record evidence of our past should not be a factor in deciding whether such loss should be permitted.*'

4.0 Architectural and Historical Background

- 4.1 A desk-based assessment has been prepared for the site (AAL 2015), to assess the overall archaeological potential. The information presented below focuses on the relevant information taken from this document.
- 4.2 The site is located in the Brumby area of Scunthorpe. The town of Old Brumby, the centre of which is to the west of the site, is mentioned in the Domesday Book of 1086 as *Brunebi*. It was a land holding of the king, with fourteen households, and meadow of 80 acres (Morgan and Thorn 1986).
- 4.3 Brumby, along with Frodingham, Ashby, Crosby and Scunthorpe were amalgamated into the modern settlement of Scunthorpe in 1919. Between 1850 and 1919, the population of the five parishes rose from 1,400 to 25,000, as a result of the growing ironstone industry (Pocock 1990, 337).
- 4.4 Brumby Hospital was constructed in 1929 as an infectious diseases hospital, treating tuberculosis and providing isolation facilities. The main building, which fronts onto East Common Lane, is three storeys tall, brick faced with an arts and crafts style dormer roof.
- 4.5 The construction of a specialist hospital reflects the demand for increasingly specialised services as a result of the rapid population growth. The hospital expanded in the 1950s to include a sanatorium, and a maternity hospital. Four additional buildings were constructed in the mid-20th century to support the expansion of services at the hospital, three northwest-southeast orientated buildings to the south and one north-south aligned building to the west. All three buildings were constructed of brick. A Porter's House was also constructed on the site. All but one of the four additional hospital buildings remain on the site.
- 4.6 Several prefabricated buildings were constructed on the site throughout the late 20th century to facilitate expanding services. The additional hospital building immediately south of the main building was demolished and replaced with a new building, called Horkstow House. This is the newest building on the site. The buildings were assigned names: the original building was named Barton House, three additional mid-20th century buildings were known as Dragonby, Epworth and Crosby, and the large prefabricated building constructed to the east of Barton House was called Ashby.
- 4.7 The hospital was used as a day support service into the 21st century, providing facilities for occupational therapy and running a canteen for the purpose of training mentally disabled adults in culinary skills and service. A facility was also set up in Horkstow House for demonstration and training in the use of mobility apparatus. The facility has now fallen out of use, and the site is empty.

5.0 Methodology

- 5.1 The works described below are based on the Historic England document '*Understanding Historic Buildings: A guide to good recording practice*' (2006).
- 5.2 Where access permitted, photographs were taken of:
 - All external elevations;
 - All internal elevations (including internal walls and subdivisions);
 - The relationship of the structures to their surroundings and the wider

- landscape;
 - Architectural details, i.e. windows, doors, decorative brickwork, carpentry joints, carvings, re-used timbers and other interesting features, fixtures or fittings. Generally a single representative shot will be taken of particular features such as windows or openings of a single type that occur more than once within the structure; and
 - A general internal photographic record of the building to show the form, general appearance and methods of construction.
- 5.3 Site plans provided by the client have been annotated showing the location and direction of each photograph taken during the survey, which are listed in Appendix 2.
- 5.4 The survey was carried out by Dr. Katherine Fennelly on Tuesday 14th and Wednesday 15th July 2015. Although the weather provided good light for the exterior shots there was poor light provided for the interior shots as many windows were small or had been boarded up, and as such a fill flash was used throughout.

6.0 Results

- 6.1 Eight buildings on the premises were surveyed as shown on Figure 2, outlined in red. For each of the buildings an account of the exterior will be given before commenting on the interior of the structure. The plate numbers refer to Appendix 1, showing a selection of photographs taken during the survey. The location of each of the photograph is shown on Figures 3-11, which can be cross referenced by shot number with the photographic archive list in Appendix 2.

Building A: Ashby House (Figure 3)

- 6.2 Ashby House comprises a series of interconnecting blocks of single storey late 20th century pre-fabricated buildings (Plate 1). It is generally flat roofed, but with double pitched roofs over glass fronted sections facing the road, with exterior wooden planking covered in asbestos paint. It covers an area of approximately 0.15ha at the northeast corner of the site.
- 6.3 The interior was predominantly divided up into approximately forty office spaces (Plate 2) with five larger classrooms (Plate 3) and three sets of lavatories (Plate 4). Ceiling height was consistently 3.12m and the concrete floors were covered with a mixture of carpet and lino tiles, where still present.
- 6.4 The building is centred on a small courtyard (Plate 5) with a corridor running along the south of the courtyard of the building aligned east-west. A second corridor is linked to the building on the eastern side and runs north-south (Plate 6).

Building B: Barton House (Figure 4, Figure 5 and Figure 6)

- 6.5 Barton House was the original hospital building, built in 1929. It is a three storey 20th century red brick building with a hipped slate roof with ceramic coping, with wide eaves and moulded wooden soffits (Plate 7). The building is three bays deep, and the main north elevation is in 15 bays, with three pairs of bays standing proud of the main face of the elevation. A single storey extension, with double pitched roof extends south from the west end of the south elevation, with a flat roof extension abutting the south of this, and another pitched roof extension to its east (Plate 8). Towards the east end of the south elevation is another extension, part being

single storey with a flat roof and part being one and a half storey with a mono pitched roof, with a disabled access ramp (Plate 9).

- 6.6 The main building and the eastern extension are in stretcher bond brickwork, the western extensions are in English Bond.
- 6.7 The third floor windows occupy large flat roofed dormers with wood panelled sides (Plate 8). The remaining windows are generally below flat brick arches with stone sills. All the windows are modern uPVC replacement casements.
- 6.8 A drainpipe on the north-facing elevation bears the date 1929 (Plate 10), all of the drainpipes are of this style, with others bearing patterns of flowers.

Ground Floor (B1-8)

- 6.9 The ground floor of the main part of the building appears to have been largely in use for catering or similar tasks, due to the use of the space as part of a catering training facility. A series of rooms of varying shapes and sizes are arranged around a central corridor running east-west (Plate 11). The original staircase is to the west of the building in the corridor (Plate 12). For the purposes of the report, the building has been divided into a series of areas (B1 – B8) defining different areas of use.
- 6.10 Area B1 is the eastern extension and has been used as an entrance into the building which has now been blocked (Plate 13). The space provides access to the upper floors (Plate 14) and the eastern extent of the building (Plate 15), two lavatories are also present on either side of the entrance.
- 6.11 There are a series of rooms associated with a canteen, B2 is the first of these spaces (Plate 16). It consists of an open space with a concrete floor and a serving area, the space behind which has a tiled floor.
- 6.12 B3 is a continuation of B2 and consists of two conjoined spaces, filled with demolition material at the time of the survey (Plate 17). The space is tiled throughout which can be seen clearly at the southern extent of this space (Plate 18). To the west is an entrance with double doors, now boarded up (Plate 19).
- 6.13 Area B4 consists of four rooms which have been used as storage for catering (Plate 20). Some of them contained industrial fridges while others are now empty.
- 6.14 B5 consists of an area which is tiled throughout and appears to have been used for food preparation (Plate 21).
- 6.15 B6 consists of four rooms on the north side of the buildings used as lavatories and wash rooms/laundry room (Plate 22Plate 22).
- 6.16 Area B7 is situated at the western extent of the building. It appears to have been used as a classroom or office (Plate 23).
- 6.17 The western extensions (B8) are divided into six rooms, which were used as plant rooms and general stores and were not accessible from the main building (Plates 24 and 25).

First Floor (B9-B16)

- 6.18 The first floor of Barton House has a central corridor running the length of the building, with two staircases on the south side of the corridor (Plate 26). A series of rooms are accessed from this corridor, termed areas B9-16 for this report.
- 6.19 There are two sets of lavatories (Plate 27) and wash rooms (Plate 28). B9 is immediately north of the eastern staircase and B10 east of the western staircase. The presence of these wash rooms and lavatories suggests it is likely that some of these spaces were used as wards or other accommodation, particularly the large rooms in B11 at the west end of the building (Plate 29) and B12 to the east (Plate 30).
- 6.20 B13 and B14 appear to have been used as service rooms and contain either heating ducts (Plate 31) or may have been used for storage on account of their small dimensions (Plate 32).
- 6.21 Areas B15 at the east end of the building and B16 towards the centre consist of smaller spaces than B11 and B12 and may have been offices or accommodation (Plate 33).

Second Floor (B17-B19)

- 6.22 The second floor is arranged in a similar manner to the floor below, with rooms either side of a central corridor. The rooms are generally smaller as they are fitted into the roof space however most of the rooms have crawl space behind the outer walls (Plate 34) through which the roof structure can be seen (Plate 35). Three areas (B17-B19) have been defined as having specific uses.
- 6.23 B17 consists of two service areas, containing a water tank (Plate 36) and extractors from the lower floors (Plate 37). B18 and B19 are two sets of toilets.
- 6.24 The other fourteen rooms comprise a variety of shapes and sizes with dormer windows (Plate 38) and built in wardrobes (Plate 39). They are likely to have been used as a variety of general purpose stores, accommodation and office space.

Building C: Crosby House (Figure 7)

- 6.25 Crosby House formed part of the early 20th century hospital complex (Plate 40) with a flat roof prefabricated extension attached to the rear (Plate 41). The main part of the building is single storey red brick structure built in stretcher bond, with hipped slate roof, built sometime prior to 1950. A plant room has been added on the north-western side of the building; this extension is evidenced by a change from stretcher bond to English bond brickwork. Doors and windows on the northeast elevation have been bricked up and a louvered vent is also present on this elevation. It has a brick stack and metal flue (Plate 42). Another single storey stretcher bond brick extension with hipped roof has been added at the northeast end of the building (Plate 43).
- 6.26 Windows are generally wooden framed sash windows, with two casement windows on the north-eastern end of the original building. A number of the rear entrances have been bricked up.
- 6.27 The large prefabricated building is connected to the southeast elevation of the main block. It is rendered grey, with blue doors.

Interior: Original building (C1-7)

- 6.28 The interior has been divided into seven areas (C1-C7). It has a broadly symmetrical plan with two wings leading out from a central entrance space. All the rooms are painted and plastered with the exception of C1.
- 6.29 The plant room C1 is attached to the front of the building and can only be entered from the exterior. A large recess with segmental arch, located directly beneath the brick chimney stack is probably a former fireplace (Plate 44).
- 6.30 The main building can be entered via two sets of double doors to either side of the plant room extension. This area (C2), provided access to a reception room or office in the centre of the building (Plate 45) and another smaller office space adjacent to the plant room, with built in storage. A window in the northeast elevation has been infilled with breeze blocks (Plate 46).
- 6.31 The northern wing is divided into two areas; C3 and C4. C3 consists of five small rooms with wooden floors which probably functioned as office space. Three of these rooms are still in good condition (Plate 47) while the other two spaces lack the internal plastered finish (Plate 48). C4 representing the north-eastern end of the original block and the later extension, consist of three larger spaces of similar design (Plate 49).
- 6.32 C5 and C6 make up the southern wing. C5 consisted of larger office spaces similar in design to C4 and C6 comprises lavatories and one large office.

Interior: prefabricated extension building (C7)

- 6.33 The prefabricated extension of the building consists of four large rooms with six smaller office spaces or stores and two sets of lavatories. The interior is divided by thin partitions typical of modern prefabricated buildings.

Building D: Dragonby House (Figure 8)

- 6.34 Dragonby House was also built at a similar time to Barton House and Crosby House. It appears to have been since extended three times to both the north and the south; with two extensions added to the south before 1964, and one to the north after this date.
- 6.35 The original part of the building is of red brick with a double pitched slate roof, aligned north – south (Plate 50). The building is mainly in stretcher bond but with some inconsistencies in the bonding suggesting it has been repaired or replaced at some point. Windows are largely large casements with brown painted wooden muntins and have concrete lintels and large stone sills.
- 6.36 On the east elevation are two adjacent protruding sections, one in three bays and one in two bays, both below double pitched slate roofs (Plate 50).
- 6.37 The three bay protruding section is replicated by an identical feature on the west elevation. To its north is a boarded up doorway with disabled access ramp (Plate 51). The doorway is below a mono pitched slate roof and this may be another small extension, also incorporating a small toilet block.

- 6.38 The first extension to the south of the building (D2) has a flat roof and is built in stretcher bond brickwork (Plate 52). On the east elevation is a small casement window with soldier arch and concrete sill and doorway also with soldier arch. On the west facing elevation a window has been inserted into a partially bricked up doorway (Plate 53).
- 6.39 The second extension (D3) is built in English bond brickwork with a double pitched slate roof and is broadly L-shaped in plan (Plate 54). The eastern gable has a wooden double door present, and there is a single door and two boarded up windows in the west elevation, one of which has been inserted into a partially infilled doorway (Plate 54).
- 6.40 The northern extension (D4) is of a more recent date with double pitched slate roof, set at a different height to the main building. It is built in stretcher bond, with a lower and upper string course of bricks on end (soldier course). There are circular windows on the north and east elevations, these don't appear to have been inserted using arch-bricks or rubbers, merely V-shaped joints between each brick (Plate 55).
- 6.41 On the east elevation there is a central porch with doorway below a double pitched slate roof (Plate 51).

Interior (D1-4)

- 6.42 The original part of the building (D1) probably consisted mainly of one large open space (Plate 56) which has been subdivided at a later point (Plate 57), with ancillary rooms to the north and south. The rooms in this part of the building are of the same style (painted breezeblocks) and have possibly been used as workshops. A corridor (Plate 58) provides access to a room to the south, within which a wall between this and the later flat roof extension has been knocked through (Plate 59). The remainder of D1 is occupied by a store, only accessible by a set of double doors in the east elevation.
- 6.43 To the east of the open space extending between D1 and extension D2 is a small room with a bricked up arch of uncertain function between the two spaces (Plate 60). East of this is a store accessed by double doors in the east elevation.
- 6.44 The second southern extension (D3) is an L-shaped space that has been recently used as a workshop. The space is plastered and painted with a concrete floor (Plate 61).
- 6.45 The northern extension (D4) appears to have been in use as an office space or similar. It consists of three larger rooms (Plate 62) with a toilet block and reception (Plate 63).

Building E: Epworth House (Figure 9)

- 6.46 Epworth House is of the same period as Crosby House, forming part of the early 20th century hospital complex built sometime prior to 1950. The majority of the building is single storey with a small area at the centre of the building which has a second storey, which protrudes from the main north-western elevation and has a central flat roofed dormer (Plate 64). The building is red brick in stretcher bond with a hipped slate roof.
- 6.47 The building has been extended on numerous occasions. The extensions to the north and to the south are small red brick blocks with hipped roofs. The northern extension (Plate 65) appears to have been further extended at a later date. This is also likely to have happened to the southern extension, although this later extension has then been removed (Plate 66).

- 6.48 The south-eastern elevation also has a number of extensions attached, with two blocks similar to the northern and southern extensions connected by a flat roofed linking section (Plate 65 and 67). The northernmost of these blocks has subsequently been extended to the north, the style of the brickwork suggesting that this was undertaken at the same time as the northern and southern extensions were extended.
- 6.49 All of the windows are sash windows and are evenly distributed across the elevations. Those on the north-western elevation are tall casements with wooden panels above (Plate 68).
- 6.50 There are two entrances to the building. The main entrance on the north-western elevation has been boarded up but would have provided access to the original building. It also provides access to a set of stairs leading to the first floor. The brickwork here uses bullnose bricks to provide curved edges to the stairway instead of a sharp arris (Plate 69). This entrance also has a simple stone awning (Plate 70).
- 6.51 There is a second entrance to the building located in the flat roof extension on the southeast elevation. This is accessed via a ramp and is now boarded up.

Interior (Ground Floor)

- 6.52 Much of the interior has been thoroughly stripped ready for demolition. The building plans provided by the client indicate that the southern part of the building was originally partitioned into a series of small rooms with a central corridor, but as can be seen from Plate 71 this is no longer the case.
- 6.53 The northern part of the original building has been rearranged following the addition of the extensions to the southeast. Doorways from the central hallway into the two larger rooms at the northern end of the building have been blocked (Plate 72) as they are circumvented by a corridor in the flat roof extension to the southeast. The northern extension is accessed from the northernmost of these two large rooms and contains three small rooms comprising a small toilet block and two offices/stores.
- 6.54 Entering through the main north-western entrance visitors would have been in an open space facing a reception office with glass and wood front (Plate 73) situated in the south-eastern extension. This part of the building also contains two toilets and a partially tiled room probably used as a washroom/laundry. In the north-western corner of the hall area is a plant room accessed by an external doorway.
- 6.55 The southern extension was in use as a toilet block.

Interior (First Floor)

- 6.56 The first floor of Epworth House can only be accessed from the exterior. It consists of one room partially cut into the roof space (Plate 74). From here the timber framing of the roof is visible (Plate 75).

Building G: Goxhill House (Figure 4)

- 6.57 Goxhill is a small single storey flat roofed prefabricated building (Plate 76). Internally the space is divided into four classroom style rooms and a set of toilets.

Building H: Horkstow House (Figure 11)

- 6.58 Horkstow House is a 1990s building built in stretcher bond. The building is single storey, however, the main entrance has a higher ceiling than the rest of the building (Plate 77). It is the largest building on the site with a footprint of about 0.2ha. It is an entirely modern building and as such has only been subject to cursory recording.
- 6.59 The building is arranged around a central courtyard containing a water feature (Plate 78). The roof is of pitched slate and extends some distance beyond the walls to provide a porch or shelter around much of the perimeter of the building (Plate 79).
- 6.60 The exterior windows are mostly casement windows with concrete sills (Plate 79).
- 6.61 Internally the building comprises a main corridor running throughout the building with rooms opening out off both sides which have been in use as offices or classrooms.

Building P: Porters House (Figure 8)

- 6.62 At the north-western extent of the development site is the Porters House. It is a small red brick cottage in stretcher bond which is to be retained as a private dwelling (Plate 80).

7.0 Discussion and Conclusions

- 7.1 The earliest building on the development site; Barton House, can be dated to 1929. It was in use as an infectious disease hospital from this period onwards.
- 7.2 The hospital expanded sometime prior to 1950 to include a sanatorium and a maternity hospital, as can be seen in the 1950 Ordnance Survey map (AAL 2015, Figure 6) showing the presence of six buildings on the development site; Barton House, Crosby House, Epworth House, Dragonby House, the Porters House and another building similar to and between Crosby and Epworth, since replaced by Horkstow House. Architecturally these buildings appear markedly uniform comprising red brick, mainly stretcher bond structures with pitched slate roofs, with very limited ornament or detailing.
- 7.3 The 1964 Ordnance Survey map (AAL 2015, Figure 7) shows a number of extensions to the complex prior to this date. These comprise; the north – south aligned and east – west aligned pitched roof extensions to the south of Barton House, the remodelling of the ends of Crosby House, the addition of the plant room to Crosby House, the southern extensions to Dragonby House and the extensions to the north and south ends and southeast elevation of Epworth House.
- 7.4 Subsequent to this date, the further extensions that were added comprise; the flat roof extension at the west end of Barton House, the extension at the northeast end of Crosby House, the extension to the north end of Dragonby House, the flat roof extension connecting together the two extensions to the rear of Epworth House and the further extension of the two extensions on either end of Epworth House. Flat roof prefabricated buildings have also been added to the complex.
- 7.5 The internal structures of all of these buildings cannot be considered firmly of a specific date and have all been remodelled extensively and repeatedly due to the changing use of the buildings and hospital complex. As such, very little of the internal historic fabric of the buildings remain.

7.6 During the late 20th century flat roof prefabricated buildings were added to the site comprising Ashby House, Goxhill House, and large extensions to Crosby House and Epworth House. The Epworth House block has since been removed. The large red brick Horkstow House was also added in the later 20th century, replacing an earlier block similar to, and lying between Crosby and Epworth.

8.0 Effectiveness of Methodology

8.1 The methodology was appropriate for the project and has allowed for a permanent record of the structures to be made prior to their demolition.

9.0 Acknowledgements

9.1 Allen Archaeology Limited would like to thank North Lincolnshire Council for this commission.

10.0 References

AAF, 2007, *Archaeological Archives: A guide to best practice in creation, compilation, transfer and curation*, Archaeological Archives Forum

AAL, 2015, *Archaeological desk-based assessment: Brumby Resource Centre, East Common Lane, Brumby, Scunthorpe*. Allen Archaeology Limited report number AAL2015105

CIfA, 2014, *Standard and guidance for the archaeological investigation and recording of standing buildings or structures*. Chartered Institute for Archaeologists

Department for Communities and Local Government, 2012, *National Planning Policy Framework*. London, Department for Communities and Local Government

English Heritage, 2006, *Understanding Historic Buildings: A guide to good recording practice*. English Heritage

Morgan P., & Thorn C., (eds.), 1986, *Domesday Book: vol.31: Lincolnshire*, Phillimore & Co. Ltd, Chichester

Pocock, D.C.D., 1990, 'The Development of Scunthorpe', in Ellis and Crowther (eds), *Humber Perspectives: a region through the ages*, Hull University Press, Hull

Appendix 1: Colour Plates



Plate 1 (Shot 283): The exterior of Ashby House, looking north, east facing elevation



Plate 2 (shot 341): One of the office rooms in Ashby House, looking east



Plate 3 (shot 338): One of the larger classrooms in Ashby House, looking east



Plate 4 (shot 365): One of the lavatories in Ashby House, looking west



Plate 5 (shot 414): Courtyard of Ashby House, looking southwest



Plate 6 (shot 354): Eastern corridor of Ashby House, looking south



Plate 7 (shot 298): View of Barton House taken from the northeast looking southwest



Plate 8 (shot 293): The western extension of Barton House, taken from the west looking east



Plate 9 (shot 151): Eastern extension of Barton House, looking northwest



Plate 10 (shot 302): Inscribed pipe on the northern face of Barton House, looking south



Plate 11 (shot 129): Main corridor of Barton House, looking east

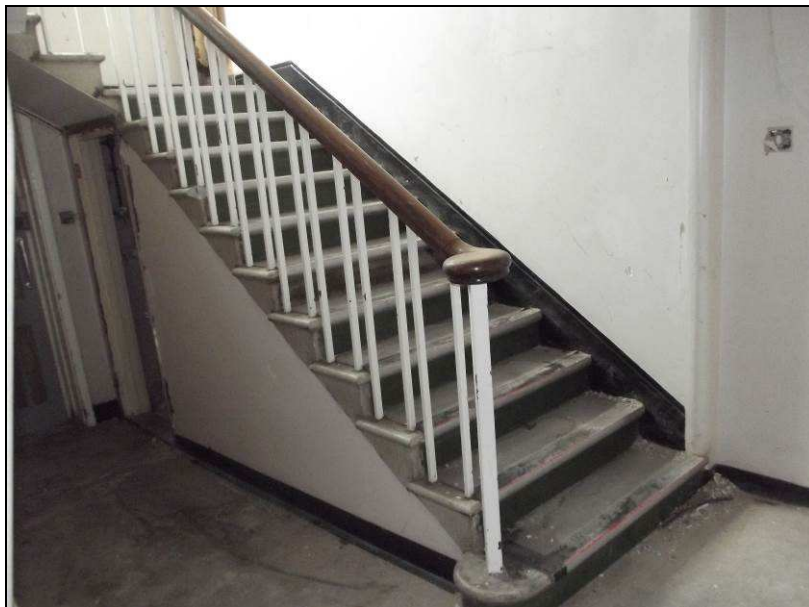


Plate 12 (shot 124): Main staircase of Barton House, looking southwest



Plate 13 (shot 96): Eastern extension to Barton House, entrance, looking southwest



Plate 14 (shot 95): Staircase in B1, looking west



Plate 15 (shot 98): Buildings main entrance is to the left and entrance to the rest of the building to the right. Looking west



Plate 16 (shot 100): Ground floor of Barton House which was in use as a canteen (B2). Looking north



Plate 17 (shot 103): View of catering units in B3, looking north



Plate 18 (shot 104): Tiled area in B3 looking southeast



Plate 19 (shot 106): Entrance to the south of B3, looking south



Plate 20 (shot 110): Storage spaces in B4, looking north



Plate 21 (shot 132): Tiled areas in B5, looking west



Plate 22 (shot 120): Photo of one of the wash rooms in B6, looking north



Plate 23 (shot 85): B7, probably used as a classroom or office, looking west



Plate 24 (shot 89): Barton House western extension housing the services for the main building, looking northeast



Plate 25 (shot 135): Extension of Barton House containing services for the main building, looking southwest



Plate 26 (shot 195): Corridor on the first floor of Barton House, looking west



Plate 27 (shot 178): Example of a lavatory in B9, looking north



Plate 28 (shot 181): Example of a wash room in B9, looking north



Plate 29 (shot 159): One of the larger rooms on the first floor of Barton House (B11), looking west



Plate 30 (shot 190): One of the larger rooms on the first floor of Barton House (B12), looking northeast



Plate 31 (shot 185): Supply of services to the first floor of Barton House, in B13, looking north



Plate 32 (Shot 170): Small room in B10, possibly used for storage on account of its dimensions, looking south



Plate 33 (shot 193): A room from B15, an example of a smaller room from the first floor, looking southwest



Plate 34 (shot 198): Access point to crawl space behind the outer walls of the second floor of Barton House, looking northeast



Plate 35 (shot 208): Timber framed roof visible through crawl space, looking southwest



Plate 36 (shot 206): Water tank in one of the rooms on the second floor of Barton House, looking north



Plate 37 (shot 204): Metal extractors from the lower floors of Barton House found on the second floor, looking northeast



Plate 38 (shot 222): Room on second floor of Barton House with a dormer window, looking northeast



Plate 39 (shot 199): Built in wardrobe on second floor of Barton House, looking east



Plate 40 (shot 277): Crosby House, looking southeast



Plate 41 (shot 278): Prefabricated extension to the rear of Crosby House, looking east



Plate 42 (shot 276): Porch of Crosby House, note the change from stretcher bonding to English bonding either side of the downpipe, looking east



Plate 43 (shot 271): Showing extension at northeast end of Crosby House, looking northwest



Plate 44 (shot 262): Plant room in Crosby House, looking southeast



Plate 45 (shot 243): Reception room in the Crosby building, looking northwest



Plate 46 (shot 260): Crosby Building front office space with built in cupboards, looking northeast



Plate 47 (shot 246): One of the small office spaces in C3, looking northwest



Plate 48 (shot 250): Room in C3 which lacks plastered walls, looking northwest



Plate 49 (shot 256): Room in C4, looking southeast



Plate 50 (shot 325): Exterior of Dragonby building, looking west



Plate 51 (shot 333): View of western facing elevation of Dragonby House, looking east



Plate 52 (shot 327): View of both southern extensions to Dragonby House, looking west



Plate 53 (shot 331): West facing elevation showing an inserted window in the southern extension, looking east



Plate 54 (shot 330): The west facing elevation of the southern extension of Dragonby House, looking east



Plate 55 (shot 335): Northern extension of Dragonby House, looking southeast



Plate 56 (shot 24): Showing part of the large space in the main part of Dragonby House, looking southeast



Plate 57 (shot 23): Partition abutting fireplace in D1, looking south



Plate 58 (shot 18): Corridor running down the western extent of the original Dragonby building, looking south



Plate 59 (shot 11): Part of the original Dragonby building looking southwest. The entrance to the southern extensions can be seen to the left of the image



Plate 60 (shot 8): Bricked up semi-circular archway in the first southern extension of Dragonby Building. Looking east



Plate 61 (shot 1): View looking east of the second southern extension to Dragonby House (D3)



Plate 62 (shot 38): One of three spaces which appear to have been in use as offices or similar in Dragonby House (D4), looking northeast



Plate 63 (shot 40): View of the reception room of Dragonby House (D4), looking north



Plate 64 (shot 305): Main entrance to Epworth House, looking southeast



Plate 65: Northern extension of Epworth House, looking west



Plate 66 (shot 316): An extension has been removed from the southern end of Epworth House, looking east



Plate 67 (shot 312): View of the extended elevation on the west facing elevation of Epworth House, looking east



Plate 68 (shot 318): View of the north-western facing elevation of Epworth House. The simple layout is indicative of its modernist design, looking northeast



Plate 69 (shot 306): External stairwell on Epworth House. Here bullnose bricks have been used to curve the edges of the doorway, looking southwest



Plate 70 (shot 304): Awning on the main entrance of Epworth House, looking southeast



Plate 71 (shot 50): View of the southern half of Epworth House looking northeast. The interior has been stripped of its partitions.



Plate 72 (shot 55): Sealed entrances to part of Epworth House, presumably due to the western extension providing access, looking northeast



Plate 73 (shot 54): Reception room opposite the main entrance to Epworth House, looking southeast



Plate 74 (shot 75): First floor of Epworth House, looking northwest



Plate 75 (shot 77): View of the timber roof structure of Epworth House taken from the first floor looking northeast



Plate 76 (shot 501): Goxhill House, looking southwest



Plate 77 (shot 286): Main entrance to Horkstow House, looking southeast



Plate 78 (shot 511): Courtyard of Horkstow House containing a water feature, looking southwest



Plate 79 (shot 291): View of Horkstow House looking north, showing the overhanging roof and porch



Plate 80 (shot 336): The Porters House, looking west

Appendix 2: Photographic Archive List

Shot No	Facing	Building	Type	Description
1	SE	Dragonby	Interior	Rear door, G17
2	S	Dragonby	Interior	Rear wall, G17
3	W	Dragonby	Interior/ Detail	Window detail, G17
4	W	Dragonby	Interior/ Detail	Window detail, G17
5	S	Dragonby	Interior/ Detail	Attic entrance, G17
6	S	Dragonby	Interior	View into rear room of building, G17
7	SW	Dragonby	Interior	Corner of room at rear of building, G14
8	E	Dragonby	Interior/ Detail	Bricked up archway, G14
9	SE	Dragonby	Interior	Corner of room, G15
10	W	Dragonby	Interior/ Detail	Bricked up arch from inside room (see Shot 8), G15
11	W	Dragonby	Interior/ Detail	Interior windows of room, G14
12	E	Dragonby	Interior	Gabled wall of room G14
13	S	Dragonby	Interior/ Detail	Wall fixture, G14
14	S	Dragonby	Interior/ Detail	Wall fixture, G14
15	W	Dragonby	Interior/ Detail	Fixture for radiator, G14
16	N	Dragonby	Interior/ Detail	Layered paint, G14
17	N	Dragonby	Interior/ Detail	Layered paint, G14
18	S	Dragonby	Interior	Hallway, looking towards G14
19	W	Dragonby	Interior/ Detail	Sash window in hallway
20	S	Dragonby	Interior/ Detail	Exposed wooden slats on roof and insulation
21	E	Dragonby	Interior/ Detail	Exposed wooden slats on roof and insulation
22	SW	Dragonby	Interior	Corner of G12a
23	S	Dragonby	Interior/ Detail	Fireplace in E-corner of G12a
24	SE	Dragonby	Interior	Room G12
25	E	Dragonby	Interior	Windows, G12
26	N	Dragonby	Interior/ Detail	Tiled walls, G10
27	NW	Dragonby	Interior/ Detail	Tiled walls, G10
28	NE	Dragonby	Interior	Windows, G11
29	E	Dragonby	Interior	Windows, G11
30	S	Dragonby	Interior/ Detail	Room division feature, G11
31	N	Dragonby	Interior	Closet space, G08
32	W	Dragonby	Interior	Recessed area, G09
33	W	Dragonby	Interior	Toilet, G05
34	S	Dragonby	Interior	Corridor, G09
35	S	Dragonby	Interior	Probable former bathroom, G06
36	W	Dragonby	Interior	Entrance hallway, Dragonby G03
37	NW	Dragonby	Interior	Room with circular windows, G02a
38	NE	Dragonby	Interior	Windows, G02

Shot No	Facing	Building	Type	Description
39	SE	Dragonby	Interior/ Detail	N-facing Reception brickwork
40	N	Dragonby	Interior/ Detail	S-facing Reception brickwork, G04
41	E	Dragonby	Interior	Windows in reception, G04
42	SW	Epworth	Interior/ Detail	Sash window detail in toilet G31
43	NW	Epworth	Interior	Corner and window of room G30
44	-	Epworth	Interior/ Detail	Attic space, southwest hallway
45	NW	Epworth	Interior	Toilet G29
46	NW	Epworth	Interior	Crawl space G12a
47	SW	Epworth	Interior	View down ward G21/G27 from entrance. Offices G15-G20, G22-G26 have been demolished and the original ward has been opened up.
48	W	Epworth	Interior/ Detail	Window and radiator fixture in G21/ G27
49	SE	Epworth	Interior	Window in rear hallway, outside G31
50	NE	Epworth	Interior	Same as Shot 47, from opposite end of ward room G21/ G27.
51	SW	Epworth	Interior/ Detail	Detail of fireplace in NE-facing wall of G21/ G27.
52	SW	Epworth	Interior	Corner of room G14 off reception.
53	E	Epworth	Interior	Reception G11
54	SE	Epworth	Interior	Reception desk, taken from G12 Entrance Hall.
55	NE	Epworth	Interior	Alcoves in Entrance Hall G12
56	NW	Epworth	Interior	Windows, G05
57	SE	Epworth	Interior	Room with high ceiling, G05
58	E	Epworth	Interior/ Detail	Toilet fixture, G09
59	E	Epworth	Interior/ Detail	Toilet fixture, G08
60	SW	Epworth	Interior	Alcove for shower, G07
61	NW	Epworth	Interior	Interior doorway G07
62	SW	Epworth	Interior/ Detail	Sash windows (not difference in sizes), G01
63	SW	Epworth	Interior/ Detail	Sash windows (not difference in sizes), G01
64	E	Epworth	Interior/ Detail	Sash window, G02
65	NE	Epworth	Interior/ Detail	Sash window and protruding wall, G02
66	NW	Epworth	Interior	Hallway outside G01, with sash window
67	NW	Epworth	Interior	Hallway outside G01, with sash window
68	NW	Epworth	Interior	Windows of G04.
69	E	Epworth	Interior	Fire exit in G06.
70	N	Epworth	Interior	Corner of reception room G11
71	SW	Epworth	Interior	Reception room G11 with desk
72	W	Epworth	Interior	Crawl space feature, G12
73	NE	Epworth	Interior	Alcove in eastern part of room, F01
74	SE	Epworth	Interior/ Detail	Radiator Fixture, F01
75	NE	Epworth	Interior/ Detail	Sloping roof, F01
76	NE	Epworth	Interior/ Detail	Attic access, F01

Shot No	Facing	Building	Type	Description
77	NE	Epworth	Interior	Attic, F01
78	SW	Epworth	Interior/ Detail	Alcove and sloping roof in western part of F01.
79	SE	Epworth	Interior/ Detail	Gas lighting fixture
80	SE	Epworth	Interior	View out of window in F01 to flat roof and skylight of reception.
81	SW	Epworth	Interior/ Detail	Attic access hatch on stairwell.
82	E	Barton	Interior	Maintenance Room G20
83	N	Barton	Interior	Maintenance Room G20
84		Barton	Interior/ Detail	Exposed floorboards, G20
85	N	Barton	Interior	Maintenance Room G20
86	S	Barton	Interior	Maintenance Room G20
87	N	Barton	Interior	Maintenance Room G21
88	S	Barton	Interior	Maintenance Room G21
89	E	Barton	Interior	Transformer shed G25
90	W	Barton	Interior	Transformer shed G25
91	N	Barton	Interior/ Detail	Sunken floor, transformer shed G25
92	NW	Barton	Interior	Room G05
93	SE	Barton	Interior	Room G05
94	W	Barton	Interior/ Detail	Toilet fixture G02
95	NW	Barton	Interior	Stairway, G03
96	S	Barton	Interior	Fire exit, G01
97	E	Barton	Interior	Hallway G04
98	W	Barton	Interior	Hallway G04
99	S	Barton	Interior	Kitchen room G06
100	N	Barton	Interior	Kitchen with fixtures, G06
101	E	Barton	Interior/ Detail	Ceiling with beams, G06
102	N	Barton	Interior	Kitchen G07, full of fixtures.
103	N	Barton	Interior	Kitchen G07, full of fixtures.
104	SE	Barton	Interior	Kitchen G07, from hallway
105	S	Barton	Interior	Emergency exit off G07
106	S	Barton	Interior	Emergency exit off G07
107	N	Barton	Interior	Room G10
108	S	Barton	Interior	Room G10 with double glazed window
109	S	Barton	Interior	Room G10 with double glazed window
110	N	Barton	Interior	Refrigeration room G08, with locked freezer (G09) on left.
111	S	Barton	Interior	Refrigeration room G08
112	N	Barton	Interior	Room G13
113	S	Barton	Interior	Room G13
114	S	Barton	Interior/ Detail	Alcove off G12 corridor
115	N	Barton	Interior	Room G14

Shot No	Facing	Building	Type	Description
116	S	Barton	Interior	Room G14
117	N	Barton	Interior/ Detail	Toilet fixture off G14
118	NW	Barton	Interior	Room G16
119	SE	Barton	Interior	Room G16
120	N	Barton	Interior	Room G17
121	NE	Barton	Interior/ Detail	Sink fixture in G17
122	NE	Barton	Interior/ Detail	Sink fixture in G17
123	S	Barton	Interior	Exit door under stairway in G19
124	SW	Barton	Interior	Stairway to upper floors, G19
125	SW	Barton	Interior/ Detail	Balustrade, G19
126	S	Barton	Interior	View towards landing G19a
127	SE	Barton	Interior	Landing G19a
128	SE	Barton	Interior	Landing G19a
129	E	Barton	Interior	Corridor G12
130	E	Barton	Interior	North recess, entrance hall G15
131	E	Barton	Interior	South recess, entrance hall G15
132	W	Barton	Interior	Entrance hallway with assorted fixtures piled in centre. G15.
133	W	Barton	Interior	View into G24, full of wires.
134	W	Barton	Interior	Fixtures and pipes in G23.
135	SW	Barton	Interior	Plant room G22
136	NW	Barton	Interior/ Detail	Archway in plant room G22.
137	S	Store	Interior	Plant room in G01
138	SE	Store	Interior	Store room with high ceiling G02
139	NE	Store	Interior	Store room with high ceiling G02
140	S	Barton	Exterior	Exterior of plant rooms G22-G24.
141	N	Barton	Exterior	S-facing elevation of building, taken from outside G24.
142	N	Barton	Exterior	Same as Shot 141, taking in upper floors and dormer window.
143	NE	Barton	Exterior	S-facing elevation of building, with entrance in right middleground
144	E	Barton	Exterior	View east along S-facing elevation of building, towards Ashby.
145	N	Barton	Exterior/ Detail	Pipes west of entranceway on S-facing elevation of building
146	SW	Store	Exterior	N-facing exterior of store at rear of Barton, western corner.
147	NE	Barton	Exterior	S-facing wall of Barton, with main dorrway open
148	NW	Barton	Exterior	S-facing elevation, with chimney stack on southwest corner.
149	N	Barton	Exterior	S-facing elevation with late-20 th century extension to right.

Shot No	Facing	Building	Type	Description
150	NE	Barton	Exterior	S-facing elevation, late 20 th century extension and dormer windows
151	N	Barton	Exterior	Southeast corner of Barton building, with dormer windows visible
152	N	Barton	Exterior	Same as Shot 151
153	W	Barton	Exterior	E-facing elevation of single story plant extension
154	W	Store	Exterior	E-facing gable of store building
155	NW	Barton	Exterior	S-facing elevation of building, with Store in foreground
156	NW	Barton	Interior	Window and external wall of F01
157	NE	Barton	Interior	Interior doorway of F01
158	W	Barton	Interior	Window at terminus of corridor F06, measuring 1.78m x 0.97m
159	W	Barton	Interior	Window and external wall of F02
160	NE	Barton	Interior	Corner of F02, and windows (1.78m x 1.1m) of N-facing exterior wall
161	NE	Barton	Interior	Room F09
162	SE	Barton	Interior/ Detail	Removable cover (removed) for alcove F04, containing utilities.
163	SW	Barton	Interior	Room F05 with tiled walls
164	S	Barton	Interior	Former bathroom F06
165	S	Barton	Interior	Room F07
166	SW	Barton	Interior	Room F10 with doorway to F09
167	N	Barton	Interior	N-facing windows of F10
168	N	Barton	Interior	Room F12
169	S	Barton	Interior	Room F12
170	S	Barton	Interior	South-facing windows of F11
171	SW	Barton	Interior	South-facing windows of F13
172	NW	Barton	Interior	Doorway to F11 (left)
173	N	Barton	Interior	Room F14
174	S	Barton	Interior/ Detail	Fireplace, plastered over, in F14
175	SW	Barton	Interior	Room F15
176	SE	Barton	Interior	Room F15
177	NW	Barton	Interior	Bathroom off F16
178	N	Barton	Interior	Room F16 with sink fixture
179	S	Barton	Interior	Room F16
180	N	Barton	Interior	Bathrooms F18 (left stall)
181	N	Barton	Interior	Bathrooms F18 (middle stall)
182	N	Barton	Interior	Bathrooms F18 (right stall)
183	N	Barton	Interior	Bathrooms F18
184	N	Barton	Interior	Room F21, with utility fixtures
185	N	Barton	Interior	Room F21, with utility fixtures

Shot No	Facing	Building	Type	Description
186	W	Barton	Interior	Room F21, inside of doorway
187	SW	Barton	Interior	Room F20
188	NW	Barton	Interior	Room F23
189	SE	Barton	Interior	Room F22
190	NE	Barton	Interior	Room at north-eastern corner of building, F26
191	NE	Barton	Interior	N-facing windows of F26
192	NW	Barton	Interior	Room F26
193	S	Barton	Interior	Room F24 with S-facing window
194	SE	Barton	Interior	Room at south-eastern corner of building, F27
195	W	Barton	Interior	View west along corridor F19/ F06
196	S	Barton	Interior/ Detail	Window above landing S15
197	N	Barton	Interior	Room S24, sloping roof and built in wardrobe (right)
198	E	Barton	Interior/ Detail	Crawl space off room S24
199	E	Barton	Interior/ Detail	Built in wardrobe in room S24, S24a
200	E	Barton	Interior/ Detail	E-facing window in room S24
201	SW	Barton	Interior	Room S23, room at south-eastern corner of the building
202	NE	Barton	Interior	Room S23, with crawl space in right foreground
203	S	Barton	Interior	Room S21 with long windows
204	NE	Barton	Interior	View into room S22, now filled with venting
205	NW	Barton	Interior/ Detail	Built in wardrobe, S22
206	N	Barton	Interior	North-facing window and room, S18
207	S	Barton	Interior	Room S19 with crawl space
208	SW	Barton	Interior	View into crawl space off S19
209	S	Barton	Interior	Bathroom S17, fixtures still in place
210	SE	Barton	Interior	Room S16
211	W	Barton	Interior	Built in wardrobe and wallpaper detail, S16
212	SW	Barton	Interior	Room S14
213	E	Barton	Interior	Room S14 with built in wardrobe S14a
214	NEW	Barton	Interior	Room S13
215	N	Barton	Interior	Room S13
216	SE	Barton	Interior	Room S12, identical to S10
217	SE	Barton	Interior	Room S10, identical to S12
218	S	Barton	Interior	Bathroom with fixtures removed, S09
219	S	Barton	Interior	Room S07
220	N	Barton	Interior	Room S08
221	S	Barton	Interior	Room S06
222	N	Barton	Interior	Room S04, with crawl space brick lining visible
223	S	Barton	Interior	Alcove S05, containing utilities. 1.73m deep from access.

Shot No	Facing	Building	Type	Description
224	W	Barton	Interior	W-facing window of northwest corner room S02
225	E	Barton	Interior	Corner room S02
226	SW	Barton	Interior	W-facing window of southwest corner room S01
227	S	Barton	Interior	Access to crawl space in S01
228		Barton	Interior	Photograph of roof space, into attic. No safe access.
229	S	Barton	Interior	Window on landing S05
230	SE	Crosby	Interior	Bathroom with fixtures removed, G34
231	SE	Crosby	Interior	Bathroom G33
232	N	Crosby	Interior	Room G31
233	W	Crosby	Interior	Room G31
234	W	Crosby	Interior	Room G30 with exposed wooden floor
235	W	Crosby	Interior	Room G29, exposed brickwork on wall, sash windows
236	SE	Crosby	Interior	Room G29
237	NW	Crosby	Interior	Bathroom G28 with fixture.
238	NW	Crosby	Interior	Sash window 1.32m x 0.86. Bathroom G27.
239	S	Crosby	Interior	Room G24 at southern extent of building, with fire exit.
240	E	Crosby	Interior	Fire exit off G23 corridor
241		Crosby	Interior/ Detail	Skylight above fire exit off G23 corridor
242	SE	Crosby	Interior	Corridor G22 towards new extension to building (not surveyed).
243	N	Crosby	Interior	Reception room G36 with reception desk
244	SE	Crosby	Interior	Reception room G36 windows, 1.47 x 0.72
245	NW	Crosby	Interior	View along northern extent of corridor G37
246	NW	Crosby	Interior	Room G42
247	NW	Crosby	Interior/ Detail	Grate in northwest-facing wall of G42, measures 0.36m x 0.29m
248	NW	Crosby	Interior	Room G43
249	NW	Crosby	Interior	Room G44
250	NW	Crosby	Interior	Room G46. Small sash window on left 1.35m x 0.53m.
251		Crosby	Interior/ Detail	Attic access from room G46.
252	N	Crosby	Interior	Room G48a
253	N	Crosby	Interior	Room G47, northern corner.
254	NE	Crosby	Interior	Fire exit and room at northern extent of Crosby. G47.
255	SE	Crosby	Interior	Room G48
256	SE	Crosby	Interior	Room G49
257	SW	Crosby	Interior	View southwest along corridor G37, reception desk to left
258	NE	Crosby	Interior	View northeast along corridor G37

Shot No	Facing	Building	Type	Description
259	W	Crosby	Interior	Shelves built into G38
260	NW	Crosby	Interior	Room G38
261	S	Crosby	Interior	Radiator with hood, 0.71m x 0.19m.
262	SE	Crosby	Interior	Plant room with brick archway to rear
263	SE	Crosby	Interior	Plant room with brick archway to rear
264	S	Crosby	Interior	Plant room with sash window
265	SE	Crosby	Exterior/ Detail	Lintel above plant room door
266	SE	Crosby	Exterior/ Detail	Lintel above plant room door
267	W	Dragonby	Interior	Plan room G13, accessed from exterior of building
268		Dragonby	Interior/ Detail	Ferrous fixtures on walls of G13
269	N	Dragonby	Interior	Bathroom G07, accessed externally
270	W	Dragonby	Interior/ Detail	Sash window in bathroom G07, 0.79m x 0.48m.
271	N	Crosby	Exterior	North-eastern wing of building
272	SW	Crosby	Exterior	NE-facing elevation of building
273	S	Crosby	Exterior	N-facing elevation of original building's northern extent
274	SW	Crosby	Exterior	NW-facing elevation of building
275	SW	Crosby	Exterior	NE-facing elevation of projecting front wing with blocked up doorway
276	SW	Crosby	Exterior	SW-facing elevation of projecting front wing
277	S	Crosby	Exterior	W-facing elevation of building
278	E	Crosby	Exterior	S-facing elevation to left, with new prefabricated building.
279	NE	Crosby	Exterior	Prefabricated addition to building, S-facing elevation
280	NE	Crosby	Exterior	View along SE-facing elevation of prefabricated building
281	SE	Crosby	Exterior	Projecting front wing. NE-facing elevation.
282	N	Ashby	Exterior	View along E-facing elevation of building
283	W	Ashby	Exterior	View along N-facing elevation of building
284	N	Ashby	Exterior	Ashby House, brick-built plant room on left, prefabricated building extending to right.
285	W	Ashby	Exterior	View along S-facing elevation of building
286	S	Horkstow	Exterior	Entrance to Horkstow House, northwest corner of building
287	SE	Horkstow	Exterior	View along N-facing elevation of building, towards Crosby
288	S	Horkstow	Exterior	N-facing elevation of building, with gap between building and plant.
289	S	Horkstow	Exterior	View along E-facing elevation of building (right)
290	W	Horkstow	Exterior	View along S-facing elevation of building
291	N	Horkstow	Exterior	View along W-facing elevation of building
292	E	Horkstow	Exterior	W-facing elevation of building, recessed

Shot No	Facing	Building	Type	Description
293	E	Barton	Exterior	W-facing elevation of building
294	E	Barton	Exterior	W-facing elevation of building
295	E	Barton	Exterior	View along N-facing elevation of building from west.
296	S	Barton	Exterior	Front door and N-facing windows in N-face of building.
297	S	Barton	Exterior	Front door and N-facing windows, with dormer windows.
298	SW	Barton	Exterior	View along N-facing elevation of building from east, east elevation.
299	S	Ashby	Exterior	Wood-framed reception room for Ashby House.
300	S	Barton	Exterior/ Detail	Iron pipe with detailing and design on N-facing elevation of building
301	S	Barton	Exterior/ Detail	Door in N-facing elevation of building
302	S	Barton	Exterior/ Detail	Iron pipe with date of foundation "1929" on N-facing elevation
303	S	Barton	Exterior/ Detail	Window cills in N-facing elevation
304	SE	Epworth	Exterior/ Detail	Stone lintel and porch
305	SE	Epworth	Exterior/ Detail	NW-facing elevation of building
306	SW	Epworth	Exterior/ Detail	External stairway to first floor of building.
307	SW	Epworth	Exterior/ Detail	External stairwell and porchway
308	SW	Epworth	Exterior/ Detail	External doorway for basement, north of porch.
309	NE	Epworth	Exterior	View along NW-facing elevation of building, from porch.
310	SE	Epworth	Exterior	NW-facing elevation of building
311	SW	Epworth	Exterior	View along SE-facing elevation of building from northeast.
312	NW	Epworth	Exterior	SE-facing elevation of building
313	NE	Epworth	Exterior	SE-facing elevation of building, taken from southwest
314	NW	Epworth	Exterior	SE-facing elevation of building – exterior of ward G21/ G27
315	NE	Epworth	Exterior	SW-facing elevation of building
316	NE	Epworth	Exterior	NW-facing elevation of building. Note paint and bricked up doorway where [possibly prefabricated] demolished extension joined building.
317	SE	Epworth	Exterior	NW-facing elevation of building, exterior of ward G21/ G27
318	NW	Epworth	Exterior	View towards NW-facing elevation of building from southwest.
319	SE	Epworth	Interior	Sunken plant room G13, accessed from exterior of building
320	NW	Epworth	Interior	Windows of sunken plant room G13
321	NW	Epworth	Interior	Windows of sunken plant room G13
322	NE	Epworth	Interior	Steps to flood of plant room from exterior

Shot No	Facing	Building	Type	Description
323	NW	Epworth	Interior/ Detail	Piping in walls of plant room
324	NW	Epworth	Interior/ Detail	Piping in walls of plant room
325	NW	Dragonby	Exterior	E-facing elevation of building
326	W	Dragonby	Exterior	Detail of E-facing elevation of building
327	W	Dragonby	Exterior	Detail of E-facing elevation of building – plant rooms
328	W	Dragonby	Exterior	Southern extent of building, E-facing elevation. Plant room.
329	NE	Dragonby	Exterior	W-facing elevation of building
330	E	Dragonby	Exterior	W-facing elevation of building's southern extent
331	E	Dragonby	Exterior	W-facing elevation of building
332	E	Dragonby	Exterior	W-facing elevation of building
333	E	Dragonby	Exterior	W-facing elevation of building
334	E	Dragonby	Exterior	W-facing elevation of building
335	SE	Dragonby	Exterior	North-western corner of building, N-facing elevation
336	W	Porter's House	Exterior	E-facing elevation
337	N	Porter's House	Exterior	S-facing elevation
338	W	Ashby	Interior	Windows of G23
339	W	Ashby	Interior	Windows of G23
340	E	Ashby	Interior	Ceiling of G23
341	NW	Ashby	Interior	G22
342	W	Ashby	Interior	G24 - lavatory
343	W	Ashby	Interior	GF24 windows
344	SE	Ashby	Interior	G26
345	W	Ashby	Interior	G21
346	E	Ashby	Interior	G27
347	SW	Ashby	Interior	G20
348	N	Ashby	Interior	G28
349	N	Ashby	Interior	G28
350	NE	Ashby	Interior	Removed heating unit in corridor
		Ashby	Interior/ Detail	Light fitting
351	SE	Ashby	Interior	G18
352	E	Ashby	Interior	G18
353	S	Ashby	Interior	G18
354	SE	Ashby	Interior	G17
355	SE	Ashby	Interior	G17
356	SE	Ashby	Interior	Looking down corridor G19 to G31
357	SW	Ashby	Interior	G16
358	SE	Ashby	Interior	G16
359	E	Ashby	Interior	G15

Shot No	Facing	Building	Type	Description
360	SW	Ashby	Interior	G14
361	N	Ashby	Interior	G11
362	E	Ashby	Interior	G11
363	SE	Ashby	Interior	G13
364	W	Ashby	Interior	G08
365	NE	Ashby	Interior	G10 - Lavatory
366	W	Ashby	Interior	G09 - Lavatory
367	E	Ashby	Interior	G08 - Lavatory
368	NW	Ashby	Interior	G04
369	S	Ashby	Interior	G05
370	NE	Ashby	Interior	G06
371	S	Ashby	Interior	G03
372	S	Ashby	Interior	G03
373	W	Ashby	Interior	G01
374	SW	Ashby	Interior	Fire exit from G02 (corridor)
375	NE	Ashby	Interior	G32
376	NW	Ashby	Interior	Skylight G32
377	SW	Ashby	Interior	Cupboard off corridor
378	E	Ashby	Interior	G34
379	E	Ashby	Interior	Corridor G33
380	W	Ashby	Interior	G35
381	W	Ashby	Interior	G35
382	N	Ashby	Interior	Fire exit in G38
383	N	Ashby	Interior	G37 lavatory
384	N	Ashby	Interior	G38 lavatory
385	N	Ashby	Interior	G39
386	S	Ashby	Interior	G40 - lavatory
387	SW	Ashby	Interior	G42 - lavatory
388	SE	Ashby	Interior	G43 - lavatory
389	E	Ashby	Interior	G43 - lavatory
390	SE	Ashby	Interior	G44
391	NW	Ashby	Interior	G45
392	E	Ashby	Interior	G45
393	E	Ashby	Interior	G95
394	NE	Ashby	Interior	G96
395	W	Ashby	Interior	Timber framing in G96
396	W	Ashby	Interior	G96
397	E	Ashby	Interior	G96
398	S	Ashby	Interior	G96

Shot No	Facing	Building	Type	Description
399	W	Ashby	Interior	Corridor looking down to G94 showing timber frame
400	N	Ashby	Interior	G97
401	S	Ashby	Interior	G97
402	E	Ashby	Interior	G46
403	E	Ashby	Interior	G46
404	W	Ashby	Interior	G92
405	NW	Ashby	Interior	G92
406	NE	Ashby	Interior	G96
407	NE	Ashby	Interior	G96
408	N	Ashby	Interior	G88
409	S	Ashby	Interior	G88 hatch through to G89
410	W	Ashby	Interior	G88
411	E	Ashby	Interior	G89 - main entrance
412	E	Ashby	Interior	G89 - main entrance
413	SE	Ashby	Interior	G91
414	SE	Ashby	Interior	View of courtyard from G91
415	W	Ashby	Interior	View of courtyard from G91
416	S	Ashby	Interior	G81 - external door
417	N	Ashby	Interior	G81
418	W	Ashby	Interior	G81
419	SE	Ashby	Interior	Removed doorway between corridor and G81
420	E	Ashby	Interior	View from G78a into G80
421	W	Ashby	Interior	G79
422	E	Ashby	Interior	G77
423	E	Ashby	Interior	G77
424	W	Ashby	Interior	G77
425	E	Ashby	Interior	Access to courtyard from G47
426	N	Ashby	Interior	Exit from building from G47
427	W	Ashby	Interior	G51
428	N	Ashby	Interior	G51
429	W	Ashby	Interior	G56
430	E	Ashby	Interior	G55 - Lavatory
431	E	Ashby	Interior	G53 - Lavatory
432	SE	Ashby	Interior	G52 - Lavatory
433	NE	Ashby	Interior	G57
434	NW	Crosby	Interior	G03
435	S	Ashby	Interior	G60
436	N	Ashby	Interior	G58
437	S	Ashby	Interior	G59

Shot No	Facing	Building	Type	Description
438	NW	Ashby	Courtyard	Courtyard
439	E	Ashby	Courtyard	Courtyard
440	W	Ashby	Courtyard	Courtyard
441	N	Ashby	Courtyard	Courtyard
442	S	Ashby	Interior	G61
443	SE	Ashby	Interior	View towards G61, G62 and G63 from corridor G78
444	W	Ashby	Interior	Heating unit in G78 corridor
445	SE	Ashby	Interior	G82
446	W	Ashby	Interior	G83
447	E	Ashby	Interior	G83
448	S	Ashby	Interior	G84
449	W	Ashby	Interior	G76
450	E	Ashby	Interior	G85
451	S	Ashby	Interior	G74 - Lavatory
452	N	Ashby	Interior	G66
453	S	Ashby	Interior	G72 - Lavatory
454	N	Ashby	Interior	G87
455	S	Ashby	Interior	G71
456	W	Ashby	Interior	G71
457	E	Ashby	Interior	G68
458	S	Ashby	Interior	G50 - Plant room
459	N	Ashby	Interior	G50 - water tank
460	N	Ashby	Interior	G50 - water tank
461	N	Ashby	Interior	G50 - sunken floor
462	W	Ashby	Interior	G50 - work bench
463	E	Ashby	Interior	G50 - Plant room
464	S	Ashby	Interior	G49 - external store
465	S	Ashby	Interior	G49 - external store
466	W	Ashby	Interior	G49 - external store
467	NW	Crosby	Interior	G21
468	NE	Crosby	Interior	G20
469	E	Crosby	Interior	G19
470	W	Crosby	Interior	G19
471	SE	Crosby	Interior	G15
472	NW	Crosby	Interior	G14
473	NE	Crosby	Interior	G12
474	NE	Crosby	Interior	G12
475	SE	Crosby	Interior	G12 - window
476	SE	Crosby	Interior	G17 - lavatory

Shot No	Facing	Building	Type	Description
477	NE	Crosby	Interior	G11
478	SE	Crosby	Interior	G11
479	NW	Crosby	Interior	G06 - lavatory
480	SE	Crosby	Interior	G05 - corridor
481	NE	Crosby	Interior	G05 - corridor
482	NE	Crosby	Interior	G07 - lavatory
483	SE	Crosby	Interior	G03
484	SE	Crosby	Interior	G03
485	SE	Crosby	Interior	G03
486	SE	Crosby	Interior	G10 - Lavatory
487	S	Crosby	Interior	G01
488	SW	Crosby	Interior	G02
489	NW	Crosby	Interior	G02
490	SW	Crosby	Interior	G02
491	S	Goxhill	Interior	G10
492	N	Goxhill	Interior	G10
493	S	Goxhill	Interior	G08
494	N	Goxhill	Interior	G09 - Lavatory
495	SW	Goxhill	Interior	G06
496	NE	Goxhill	Interior	G06
497	W	Goxhill	Interior	Corridor
498	E	Goxhill	Interior	G03
499	E	Goxhill	Interior	G02
500	SW	Goxhill	Exterior	Exterior
501	E	Horkstow	Interior	Corridor
502	S	Horkstow	Interior	Entrance to Horkstow
503	W	Horkstow	Interior	Corridor in entranceway
504	W	Horkstow	Interior	Corridor
505	SE	Horkstow	Interior	Corridor
506	N	Horkstow	Interior	Window
507	SE	Horkstow	Interior	G41
508	SW	Horkstow	Exterior	Courtyard
509	S	Horkstow	Exterior	Courtyard
510	W	Horkstow	Exterior	Courtyard
511	E	Horkstow	Interior	Skylight
512	S	Crosby	Interior	G16

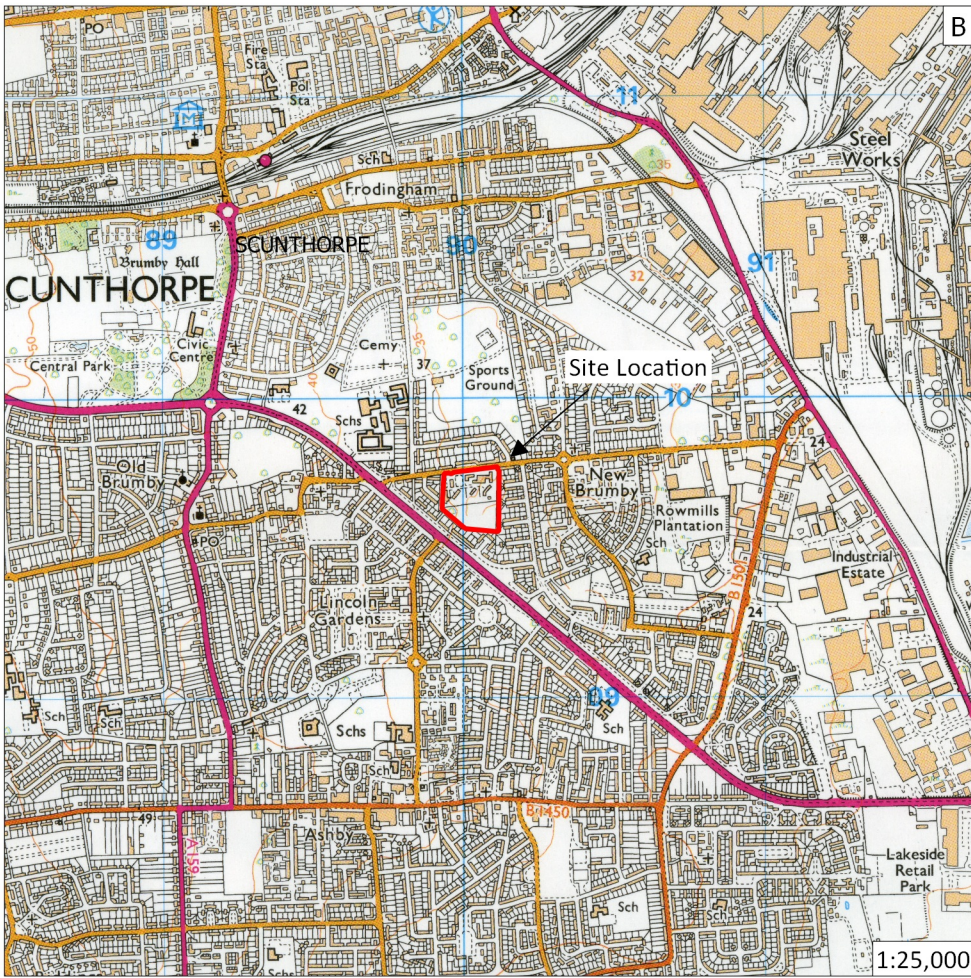
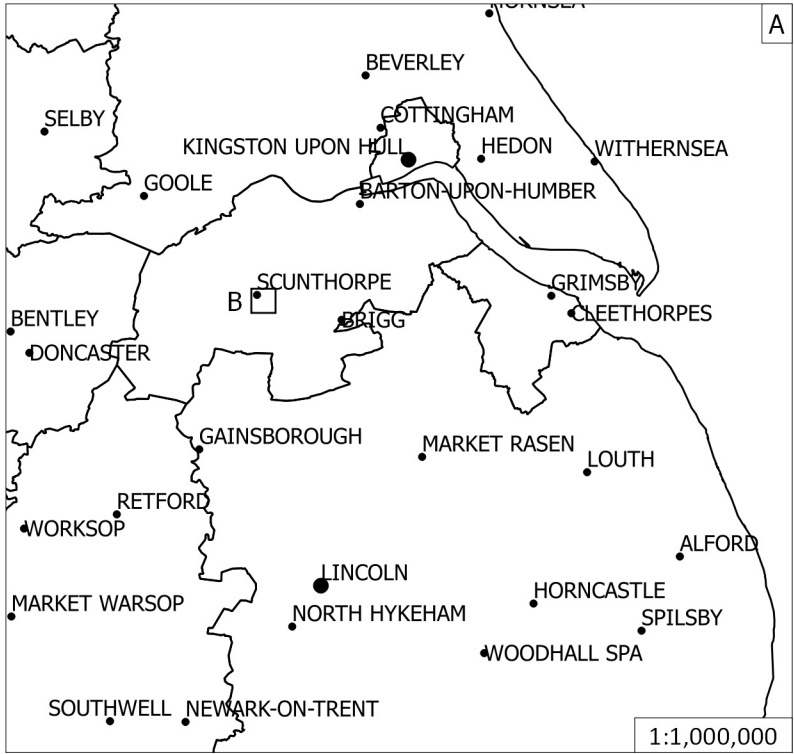
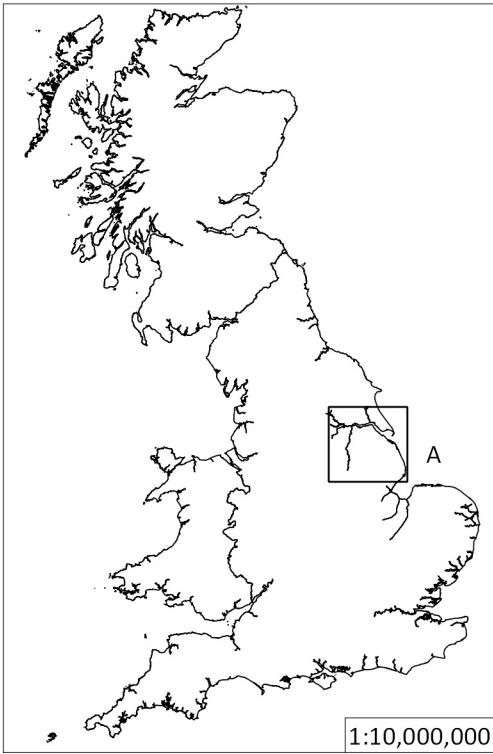
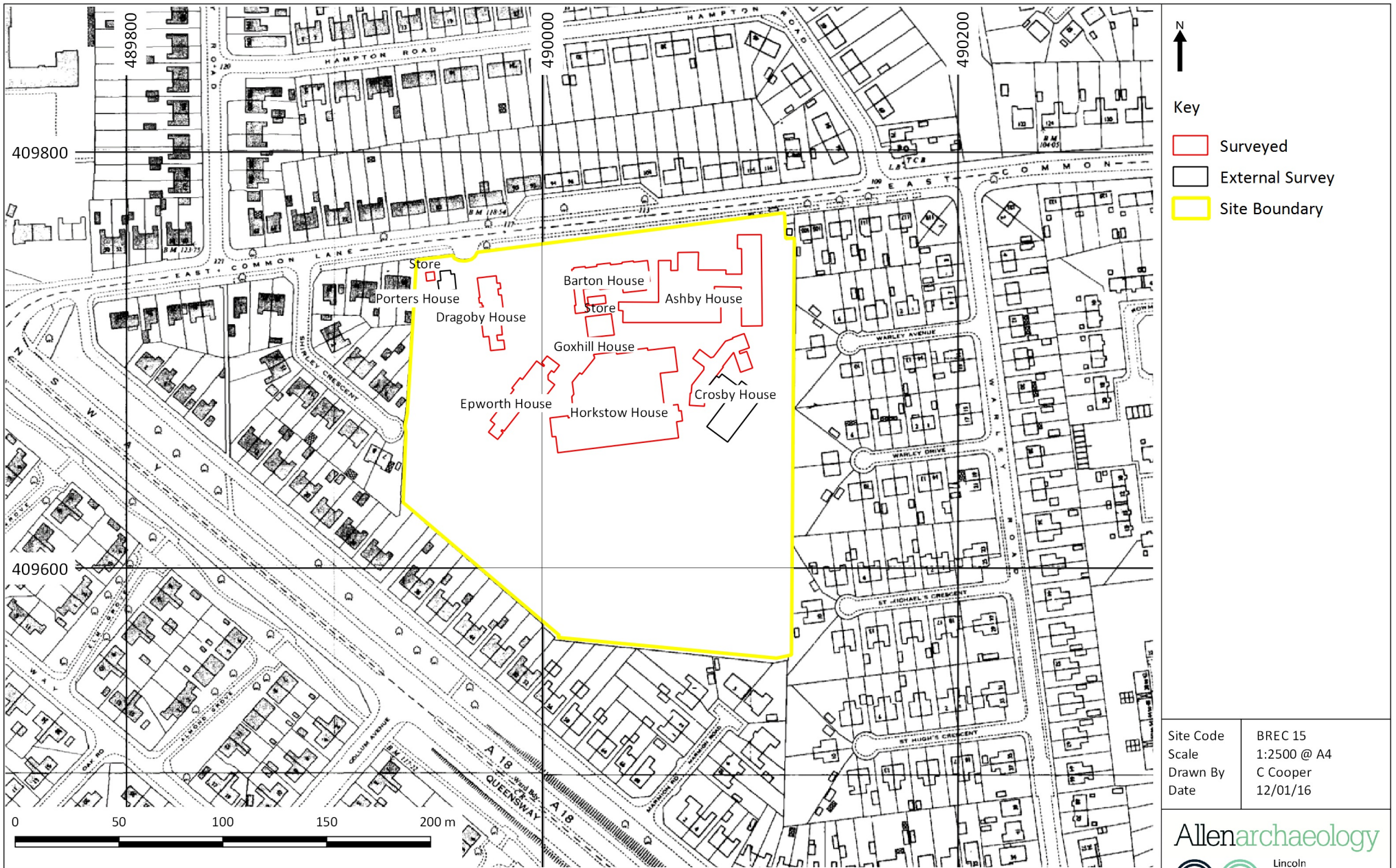


Figure 1: Site location outlined in red

© Crown copyright 2000. All rights reserved. Licence Number 100047330

Site Code	BREC 15
Scale	1:25,000 @ A4
Drawn by	C Cooper
Date	15/01/16

Allenarchaeology
 Lincoln
 Birmingham
 Cambridge
 Southampton
www.allenarchaeology.co.uk



- Key
- Surveyed
 - External Survey
 - Site Boundary

Site Code	BREC 15
Scale	1:2500 @ A4
Drawn By	C Cooper
Date	12/01/16

Allenarchaeology

Lincoln
Birmingham
Cambridge
Southampton

www.allenarchaeology.co.uk

Figure 2: Site location, with surveyed buildings outlined in red

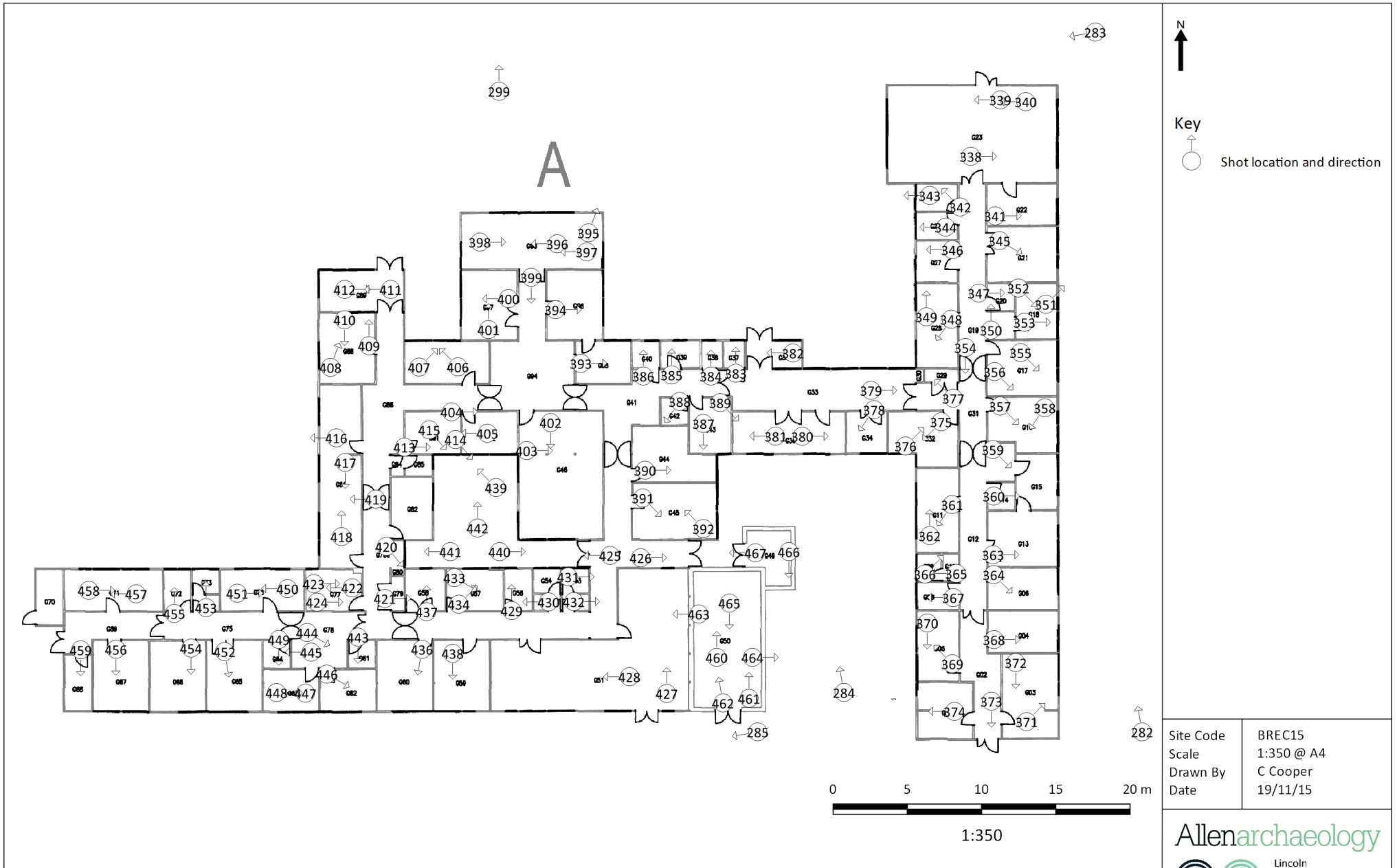


Figure 3: Ashby House, plan of ground floor (Base map provided by client)

Site Code	BREC15
Scale	1:350 @ A4
Drawn By	C Cooper
Date	19/11/15

Allenarchaeology

Lincoln
Birmingham
Cambridge
Southampton

www.allenarchaeology.co.uk



N
↑

Key

- Ashby
- ▭ Areas B1-7

Site Code	BREC 15
Scale	1:200 @ A3
Drawn By	C Cooper
Date	12/01/16

Allenarchaeology

- Lincoln
- Birmingham
- Cambridge
- Southampton

www.allenarchaeology.co.uk

Figure 4: Barton House, Goxhill and Store, plan of ground floor (base map provided by client)



Figure 5: Barton House plan of first floor (Base map provided by client)

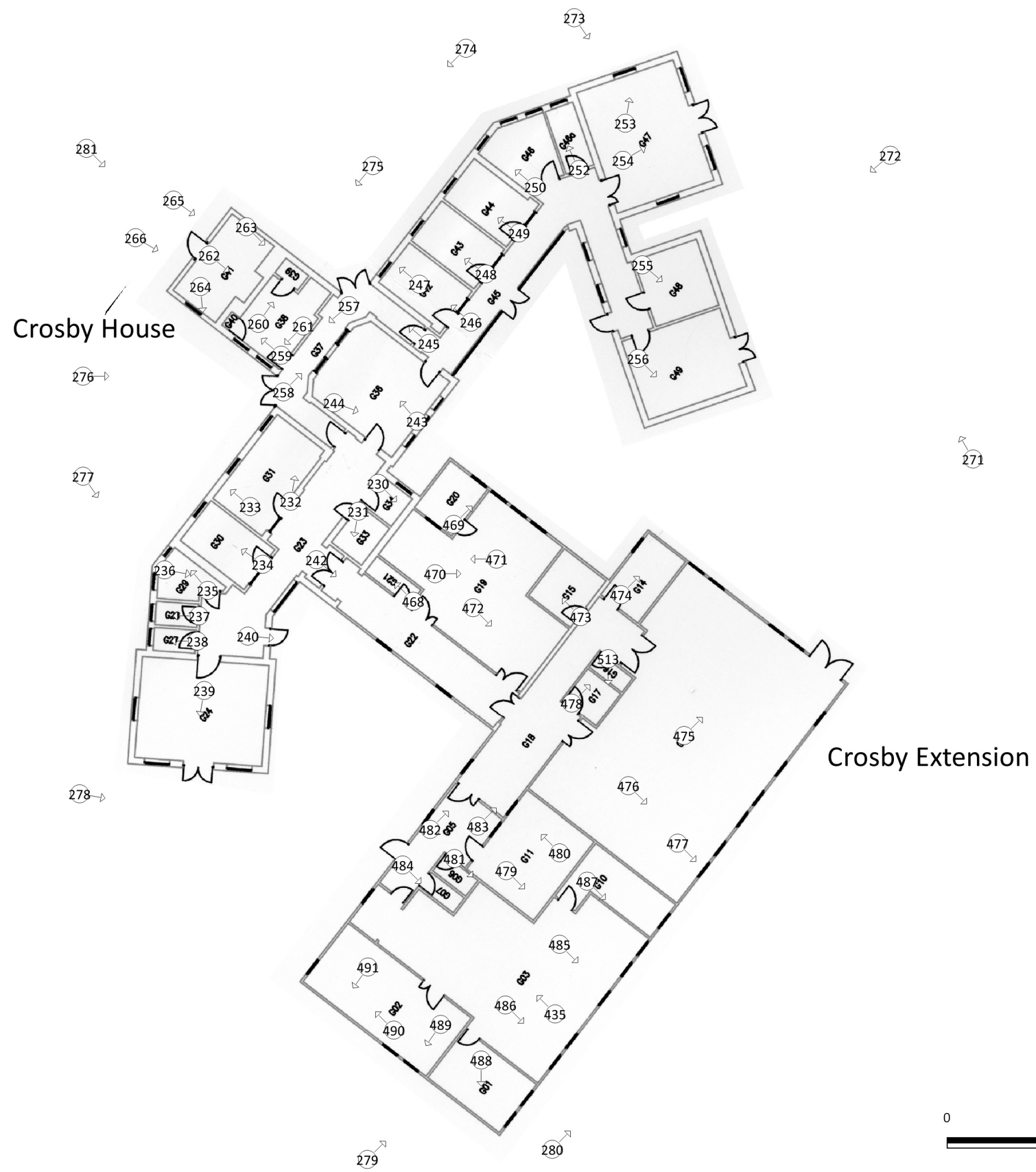
Allenarchaeology



www.allenarchaeology.co.uk



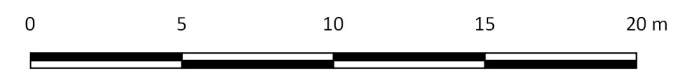
Figure 6: Barton House plan of second floor (Base map provided by client)



N
↑

Key
○ Store_GF

Site Code	BREC 15
Scale	1:250 @ A3
Drawn By	C Cooper
Date	12/01/16



1:250

Figure 7: Crosby House, plan of ground floor (Basemap provided by client)

Allenarchaeology

Lincoln
Birmingham
Cambridge
Southampton

www.allenarchaeology.co.uk



Figure 8: Dragonby House and Porters House, plan of ground floor (Base map provided by client)

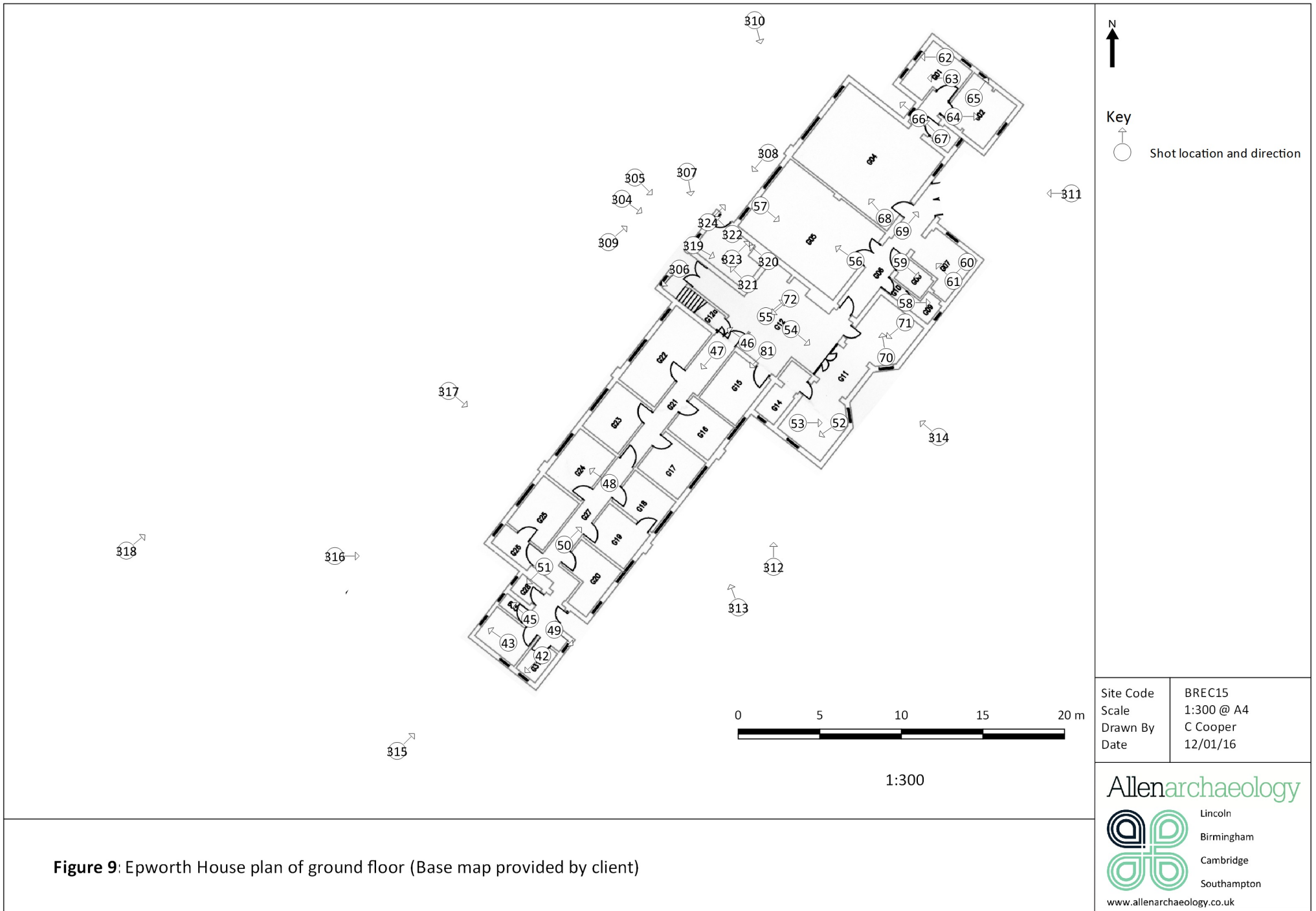
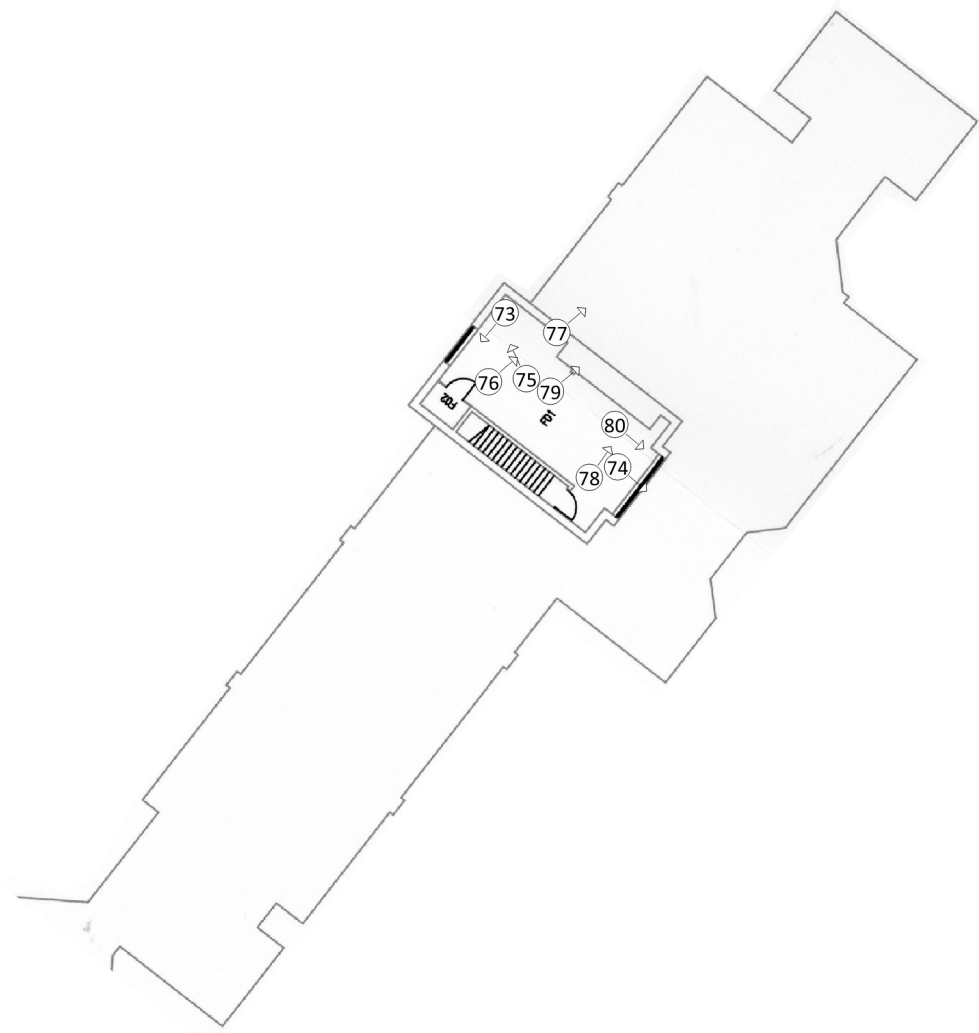



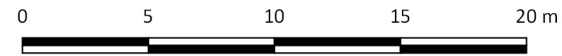
Figure 9: Epworth House plan of ground floor (Base map provided by client)

Allenarchaeology
 Lincoln
 Birmingham
 Cambridge
 Southampton
 www.allenarchaeology.co.uk



Key

 Shot location and direction



1:300

Site Code	BREC15
Scale	1:300 @ A4
Drawn By	C Cooper
Date	12/01/16

Allenarchaeology

-  Lincoln
-  Birmingham
-  Cambridge
-  Southampton

www.allenarchaeology.co.uk

Figure 10: Epworth House plan of first floor (Base map provided by client)



Figure 11: Horkstow House, plan of ground floor (Base map provided by client)

Site Code	BREC15
Scale	1:350 @ A4
Drawn By	C Cooper
Date	12/01/16

Allenarchaeology

Lincoln
Birmingham
Cambridge
Southampton

www.allenarchaeology.co.uk



Allen Archaeology Limited
Website: www.allenarchaeology.co.uk

Company Registered in England and Wales No: 6935529

Lincoln
Whisby Lodge
Hillcroft Business Park
Whisby Road
Lincoln
LN6 3QL

Birmingham
Arion Business Centre
Harriet House
118 High Street
Birmingham
B23 6BG

Cambridge
Wellington House
East Road
Cambridge
CB1 1BH

Southampton
International House
Southampton International Business Park
George Curl Way
Southampton
SO18 2RZ

Tel/Fax: +44 (0) 1522 685356
Email: info@allenarchaeology.co.uk

Tel/Fax: +44 (0) 800 610 2545
Email: birmingham@allenarchaeology.co.uk

Tel/Fax: +44 (0) 800 610 2550
Email: cambridge@allenarchaeology.co.uk

Tel: +44 (0) 800 610 2555
Email: southampton@allenarchaeology.co.uk