

Shot No	Facing	Type	Description
		floor/detail	
42	E	Interior/ground floor/detail	Detail of windmill graffiti
43	NE	Interior/ground floor	Interior of cog house towards north elevation
44	E	Interior/ground floor	Interior of cog house showing stone nut and flour chute
45	E	Interior/ground floor	Interior of cog house showing stone nut and flour chute
46	SE	Interior/below ground floor	Interior of cog house showing stone nut
47	N	Interior/below ground floor/detail	Detail of central shaft connecting to water wheel
48	N	Interior/below ground floor	Wallower above pit wheel
49	N	Interior/below ground floor	Wallower above pit wheel
50	NNE	Interior/ground floor	East elevation and east partition of cog house
51	N	Interior/ground floor	North elevation of cog house and stone nut
52	NW	Interior/1 st floor	General interior shot
53	ENE	Interior/1 st floor	North and east elevation and grinding mechanisms
54	ENE	Interior/1 st floor/detail	Detail of crown wheel and belt wheel
55	N	Interior/1 st floor/detail	Detail of crown wheel, millstones and sack hoist wheel
56	SE	Interior/1 st floor	East and south elevation with staircase in the corner
57	SW	Interior/1 st floor	South and west elevation
58	W	Interior/2 nd floor/detail	Roof structure
59	E	Interior/2 nd floor/detail	Roof structure
60	ESE	Interior/2 nd floor/detail	Wooden pulley mechanism
61	S	Interior/2 nd floor/detail	Wooden pulley mechanism
62	NE	Interior/2 nd floor/detail	North and east elevation and wooden winch mechanism
63	ESE	Interior/2 nd floor/detail	East elevation and wooden winch mechanism
64	SSE	Interior/2 nd floor	South elevation and ephemera
65	S	Interior/2 nd floor/detail	Detail of void in roof
66	W	Interior/2 nd floor	East elevation and window
67	S	Interior/2 nd floor	Staircase leading from 2 nd to 1 st floor
68	S	Interior/2 nd floor/detail	Close-up of exposed limestone where plaster has fallen off
69	S	Interior/1 st floor/detail	Plaster with graffiti on south elevation
70	S	Interior/1 st floor/detail	Close-up of graffiti "TH 1827"
71	S	Interior/1 st floor/detail	Close-up of graffiti "R W"

Shot No	Facing	Type	Description
72	S	Interior/1 st floor/detail	Close-up of graffiti "I W" 1807
73	S	Interior/1 st floor/detail	Close-up of graffiti "W", "Sept.."
74	S	Interior/1 st floor/detail	Close-up of graffiti "W", "Sept 26? 1807"
75	S	Interior/1 st floor/detail	Close-up of group of graffiti
76	S	Ground floor/detail	Symmetrical flower graffiti on south internal elevation near to doors
77	NW	Exterior	General shot of the miller's lodge and mill within its landscape

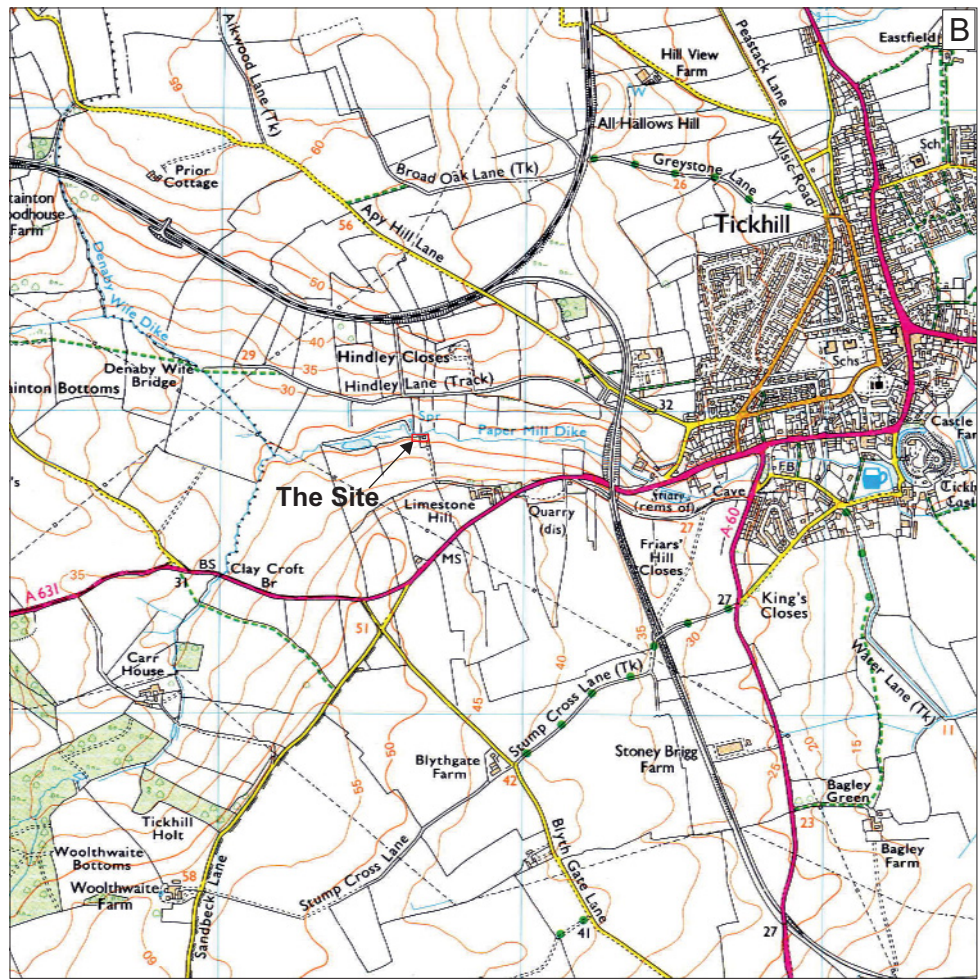
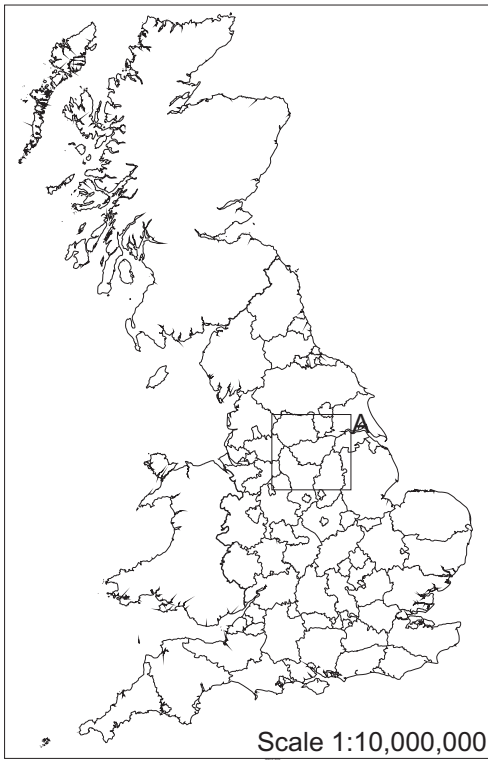


Figure 1: Site location at scale 1:25,000, with the site in red
 © Crown Copyright 2006. All rights reserved. Licence Number 100047330

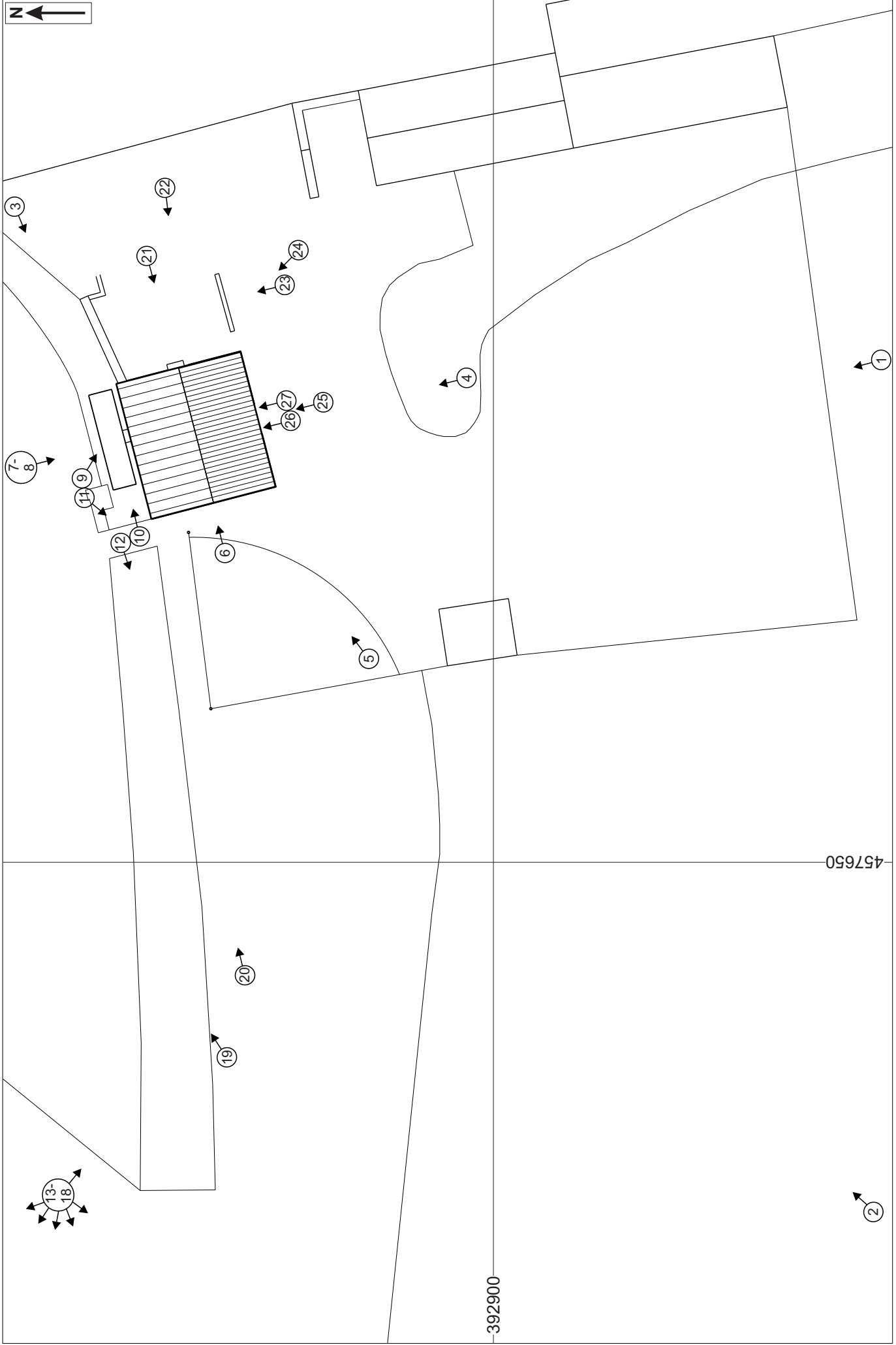


Figure 2: Site location at scale 1:250, showing location and orientation of all exterior photographs. Interior photographs shown on Figures 3 to 5 (Survey drawings provided by Scorer and Hawkins)

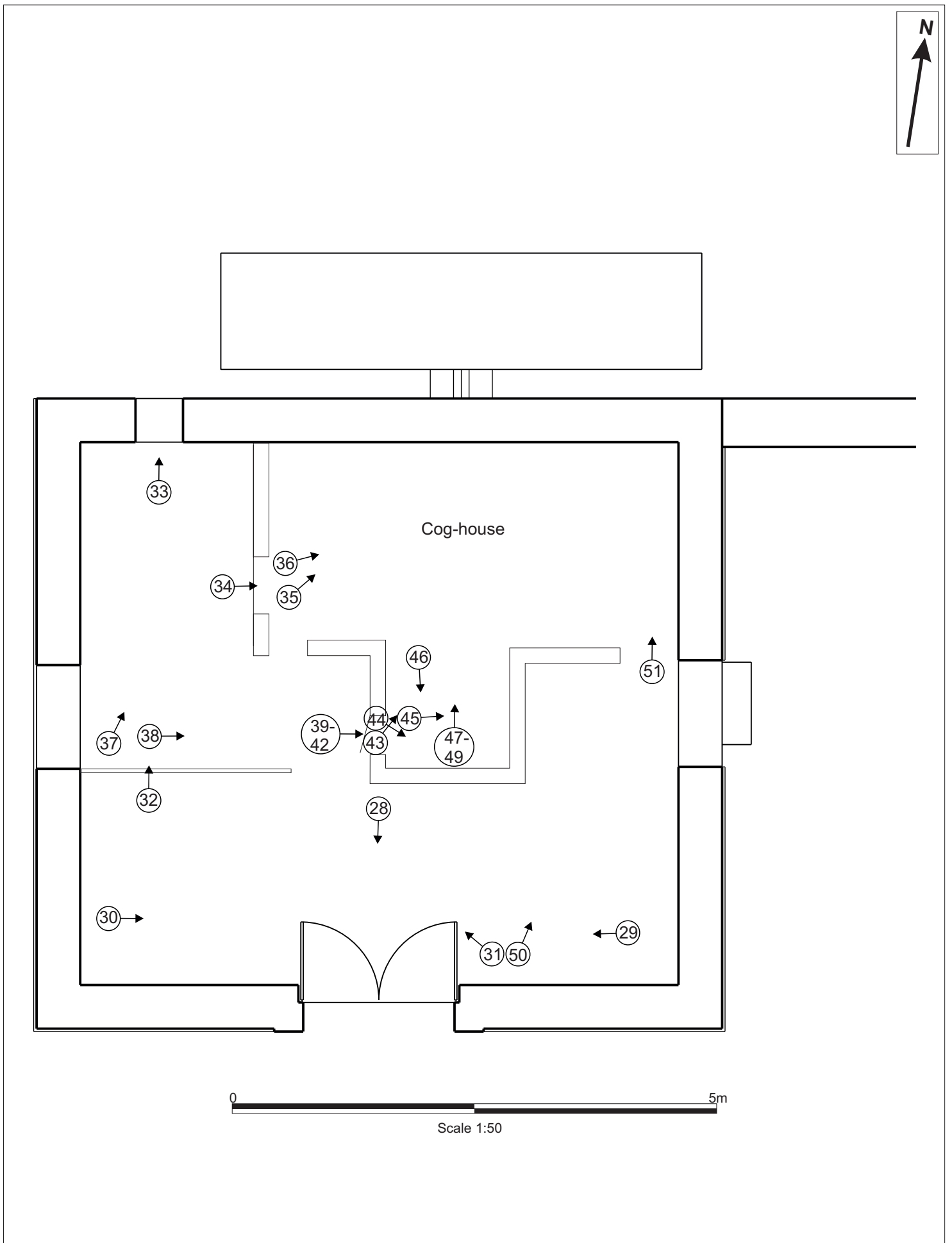
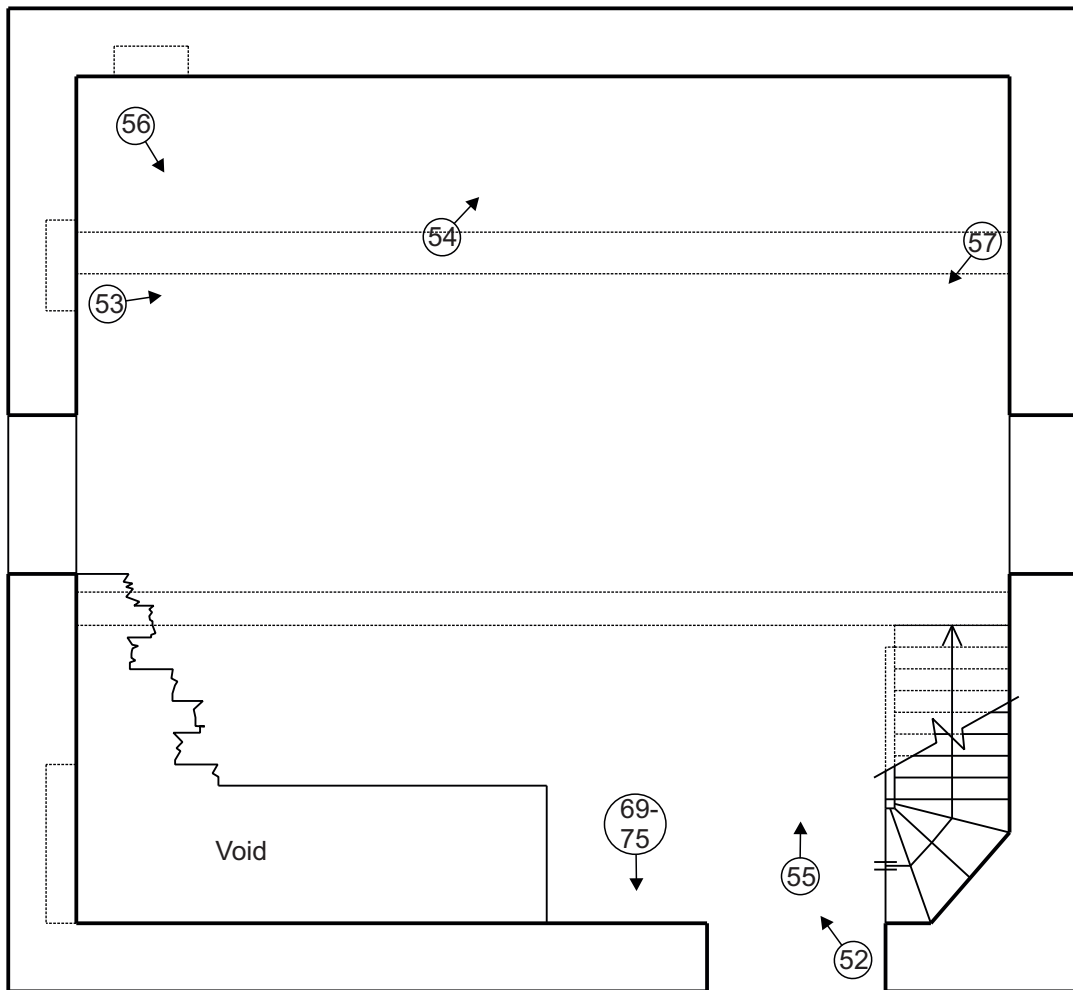


Figure 3: Plan showing location and orientation of photographs taken on ground floor at scale 1:50 (Survey drawings provided by Scorer and Hawkins)



0 5m
Scale 1:50

Figure 4: Plan showing location and orientation of photographs taken on first floor at scale 1:50 (Survey drawings provided by Scorer and Hawkins)

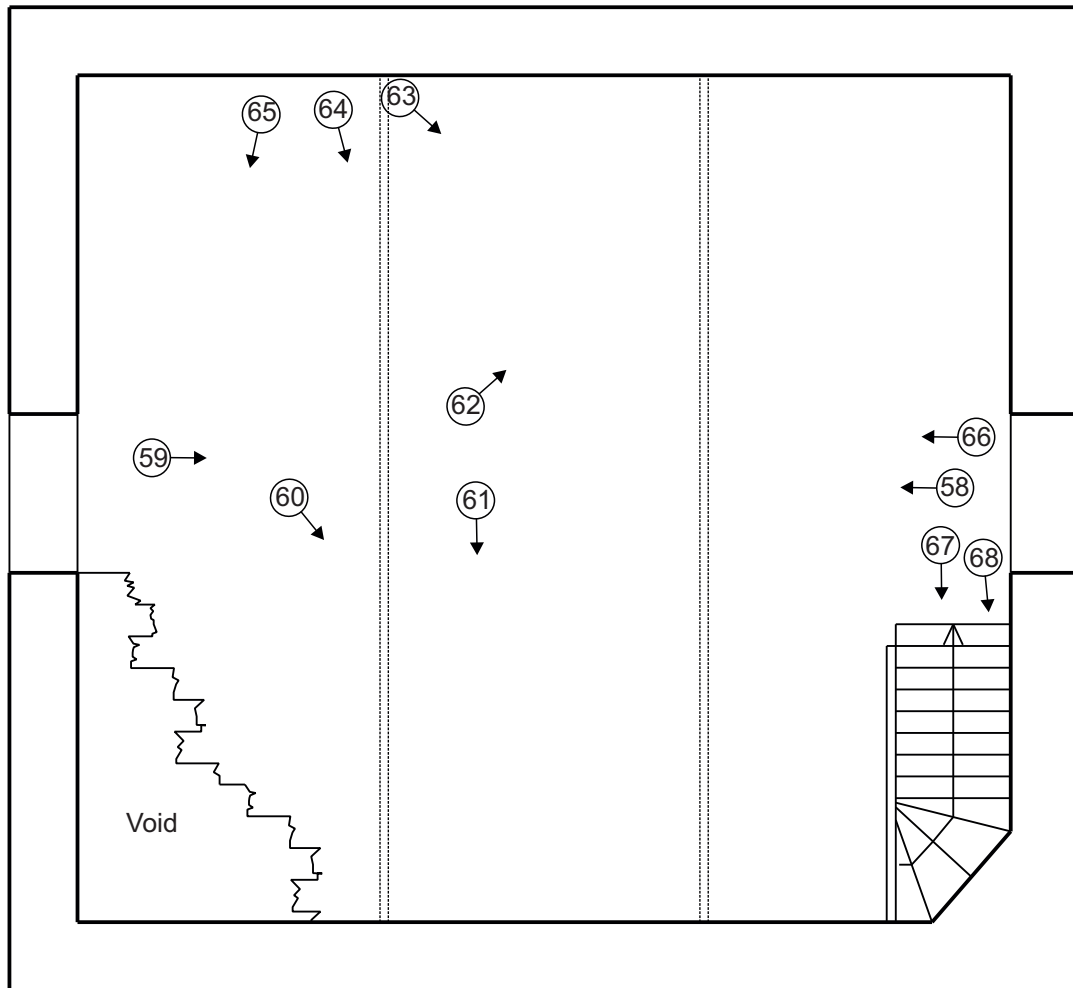
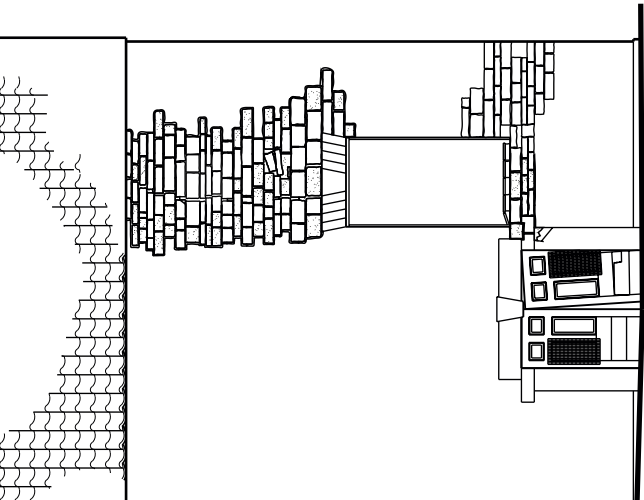
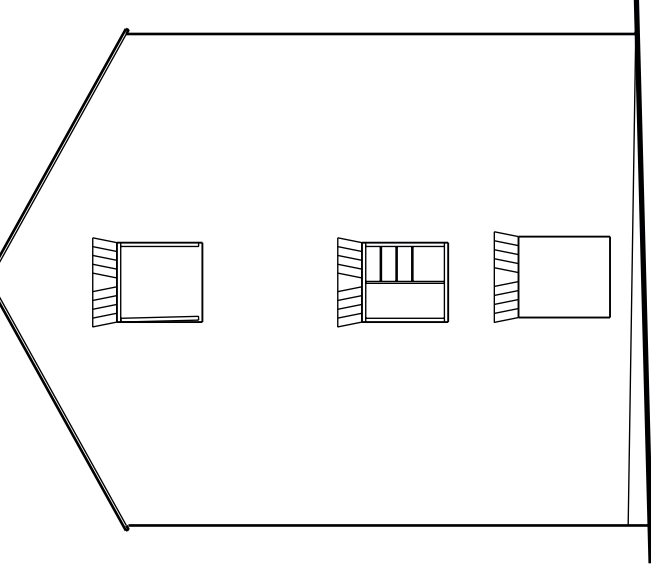


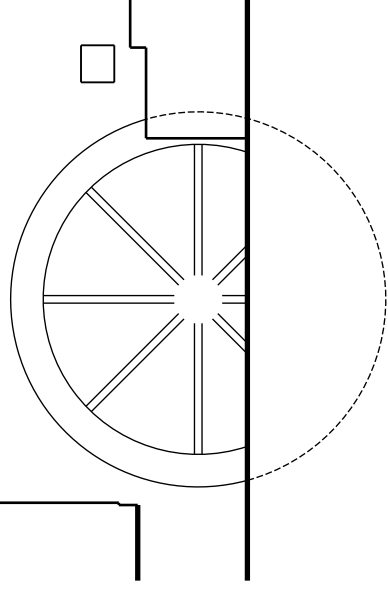
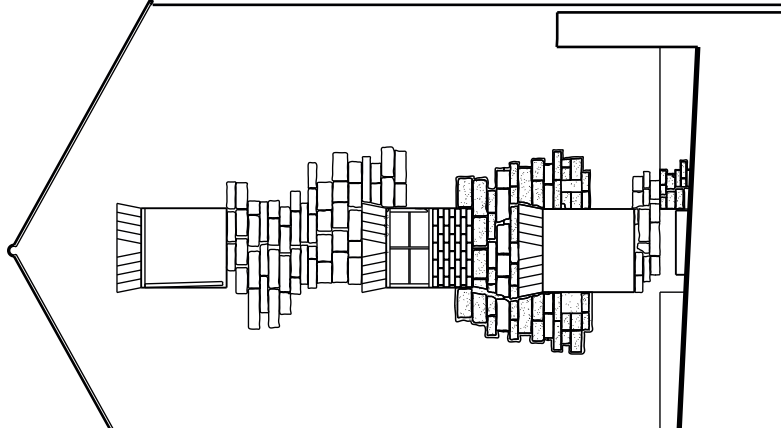
Figure 5: Plan showing location and orientation of photographs taken on second floor at scale 1:50 (Survey drawings provided by Scorer and Hawkins)



East Facing Elevation

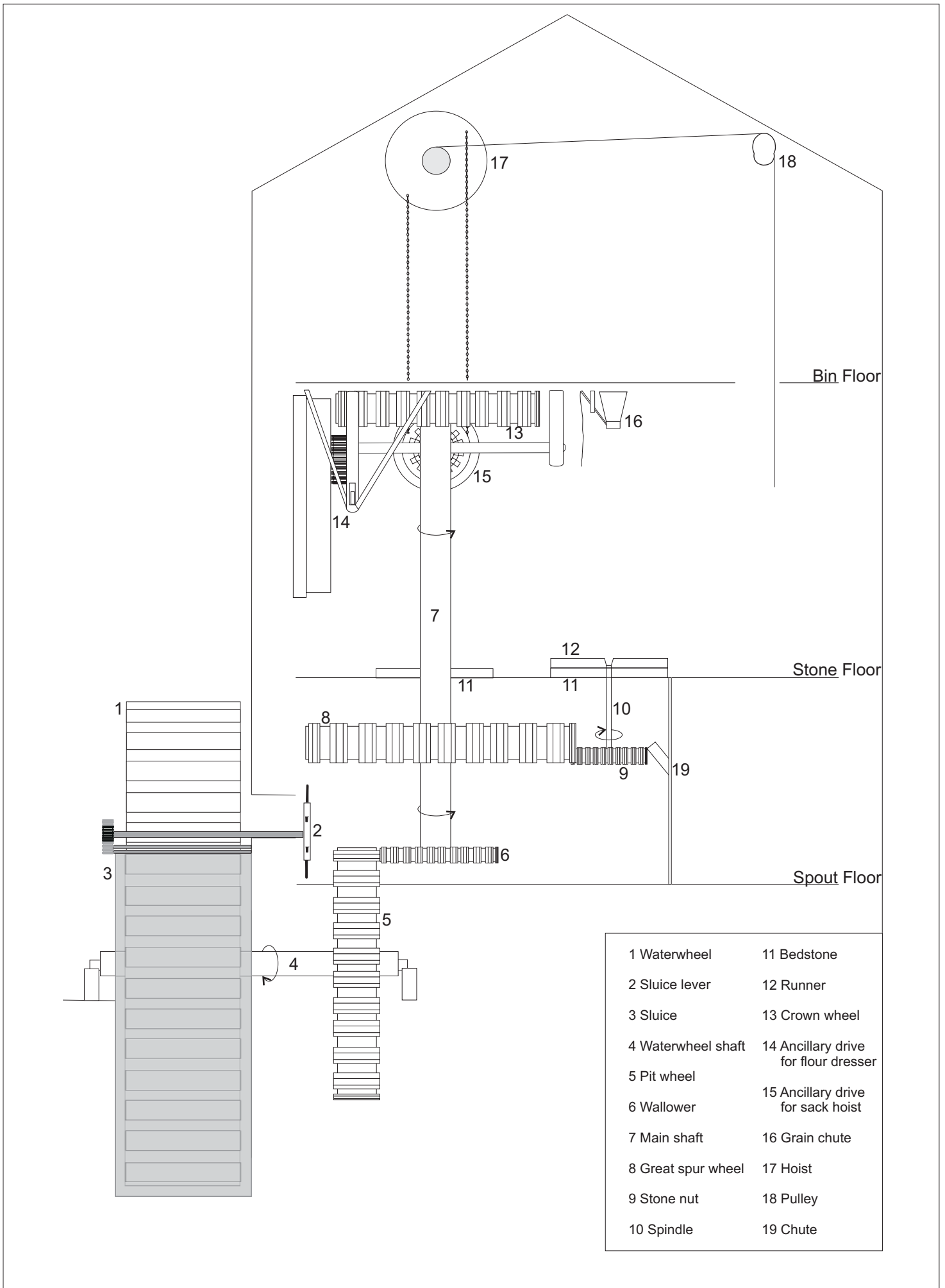


Cross Section



0
Scale 1:100

Figure 6: Elevations and section of water mill at
(Survey drawings provided by Scorer and Hawkins)



1 Waterwheel	11 Bedstone
2 Sluice lever	12 Runner
3 Sluice	13 Crown wheel
4 Waterwheel shaft	14 Ancillary drive for flour dresser
5 Pit wheel	15 Ancillary drive for sack hoist
6 Wallower	16 Grain chute
7 Main shaft	17 Hoist
8 Great spur wheel	18 Pulley
9 Stone nut	19 Chute
10 Spindle	

Figure 7: Schematic diagram of in situ machinery looking east (not to scale). See Figure 8 for alternate view of ancillary machinery

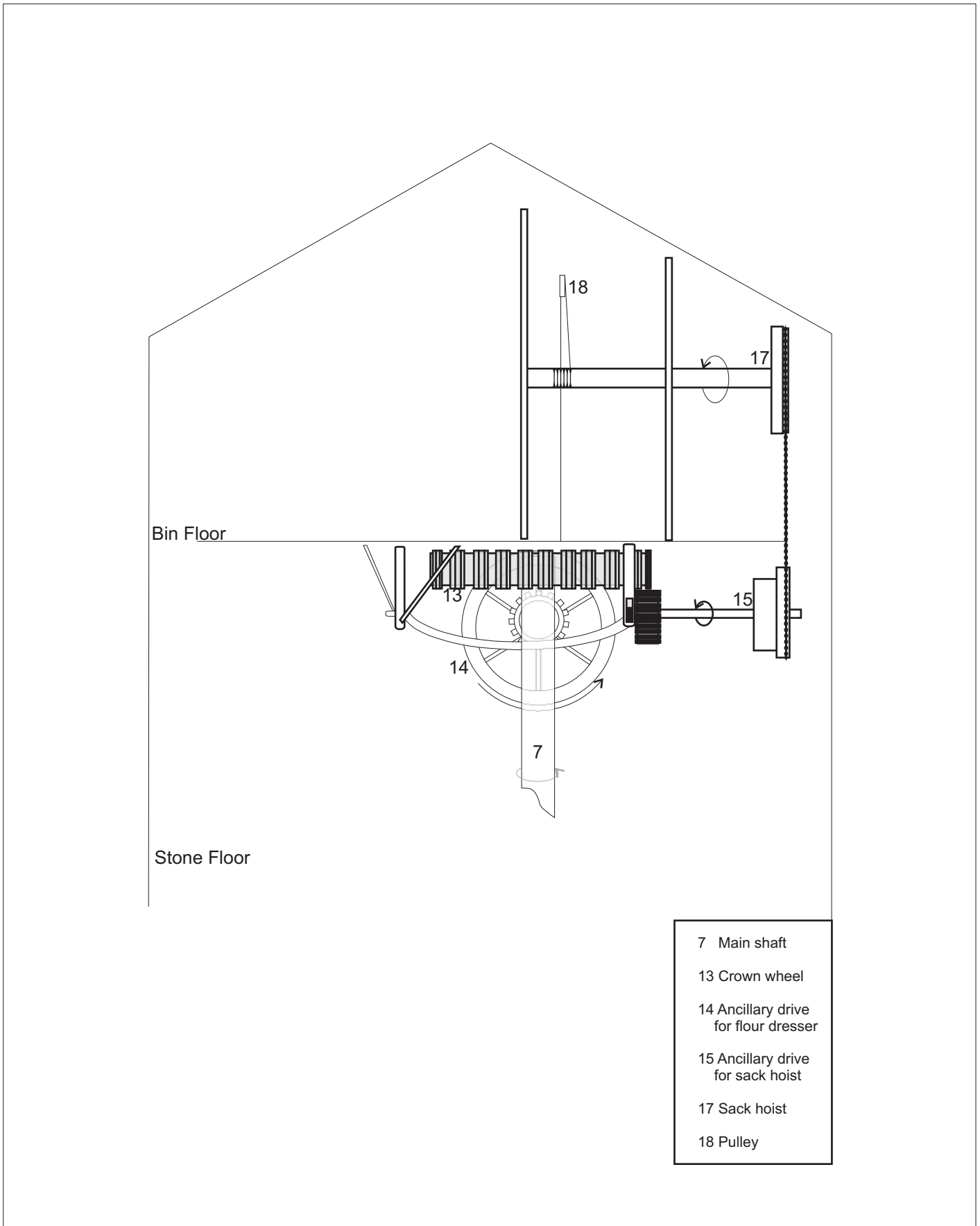


Figure 8: Schematic diagram of ancillary machinery for flour dresser and sack hoist, looking north (not to scale). For diagram of machinery below see Figure 7.

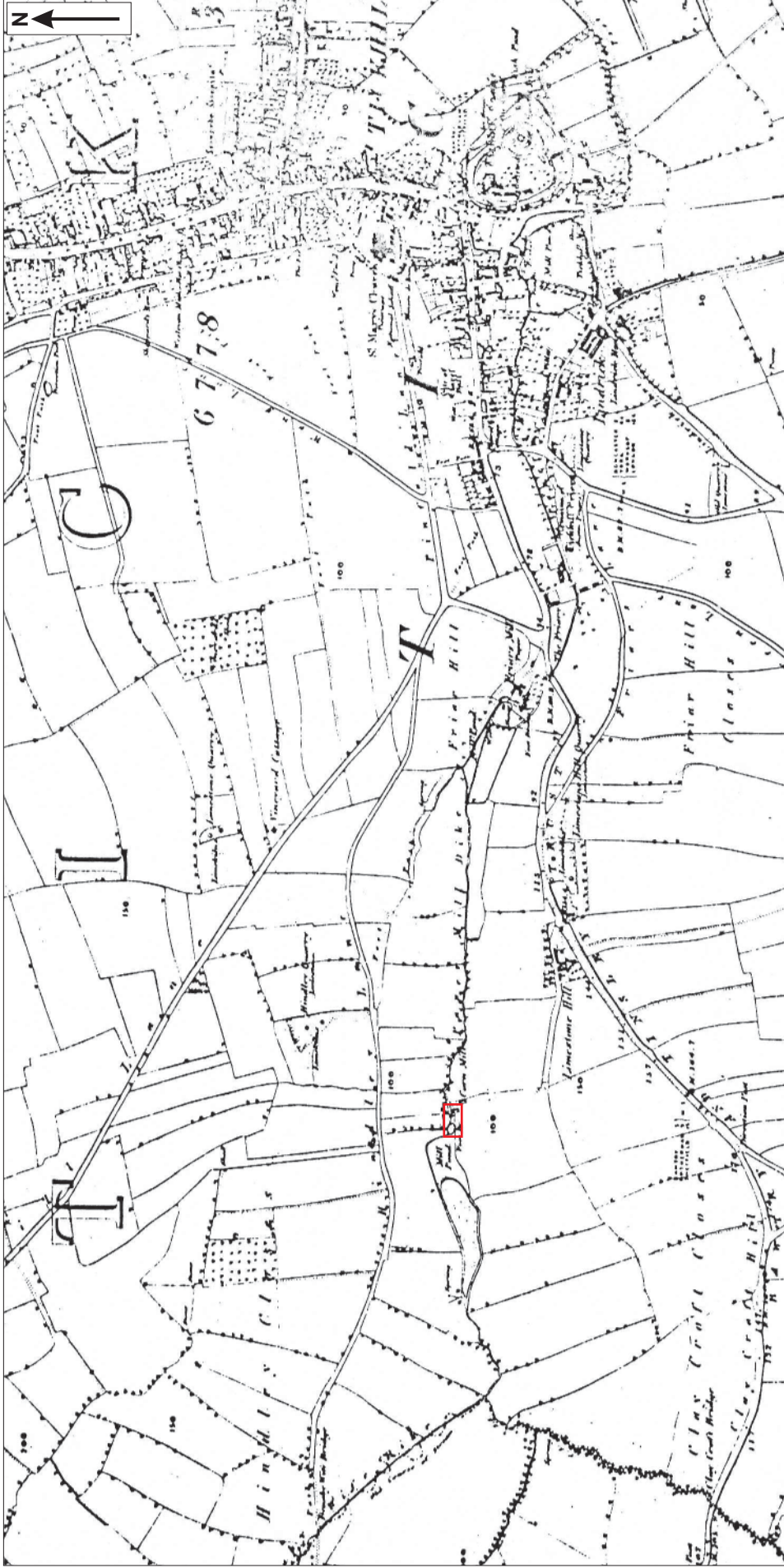


Figure 9: First Edition Ordnance Survey Map of 1854 with the site outlined in red. Not to scale

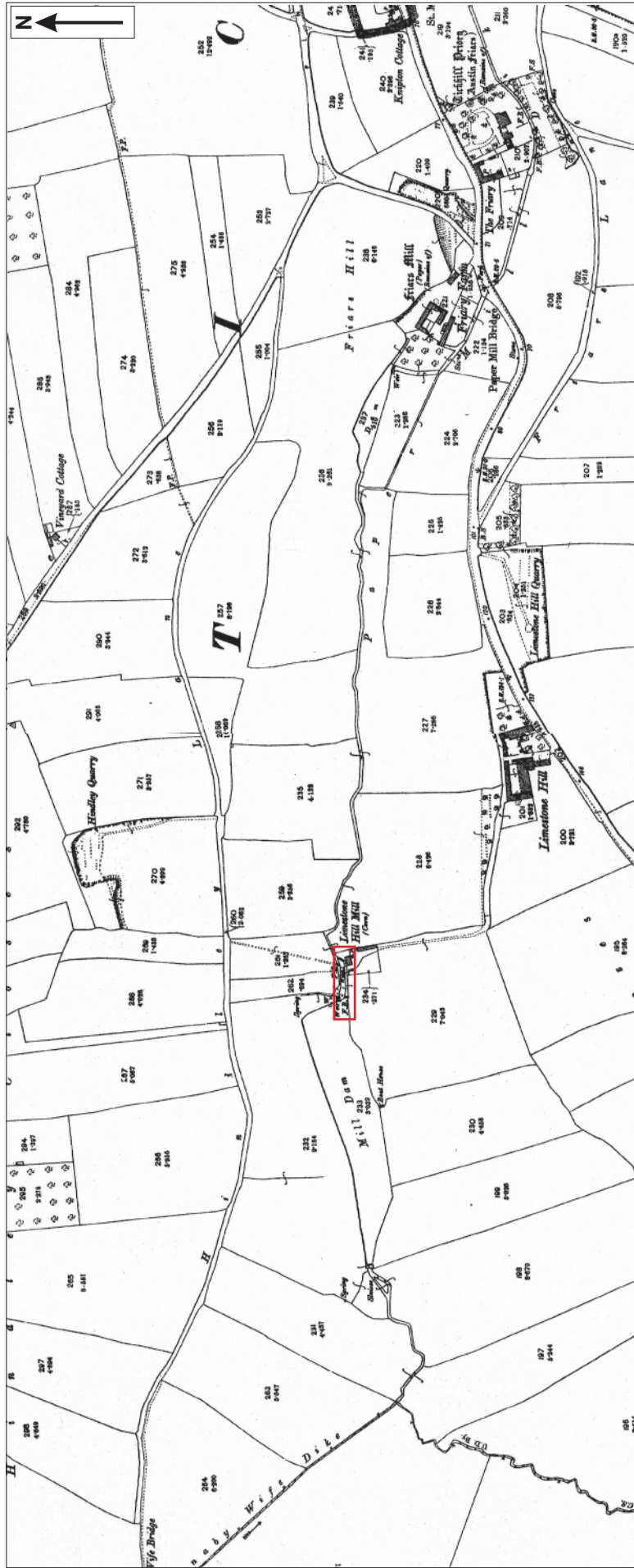


Figure 10: 1902 Ordnance Survey map with the site outlined in red. Not to scale

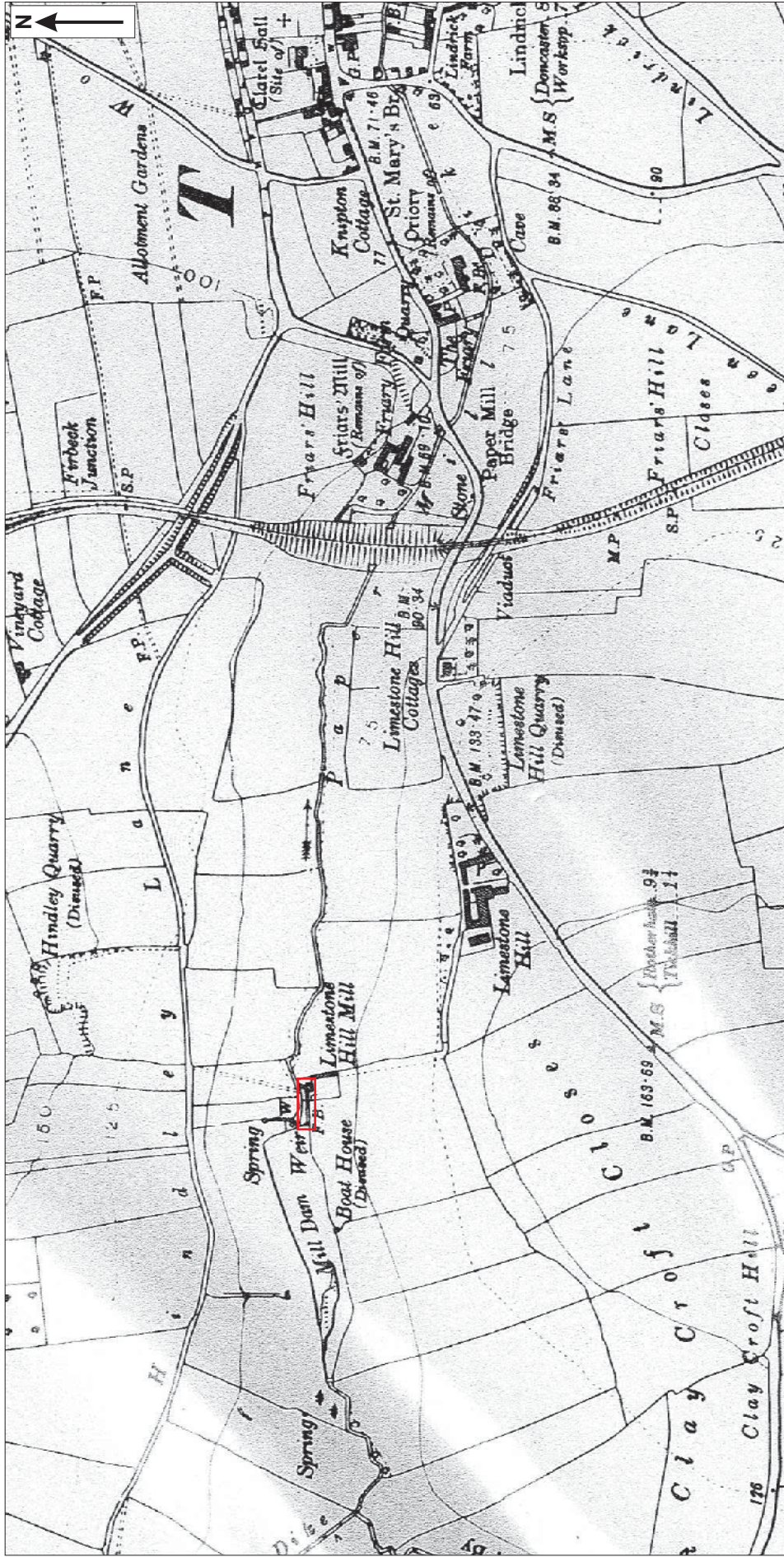


Figure 11: 1932 Ordnance Survey map with the site outlined in red. Not to scale

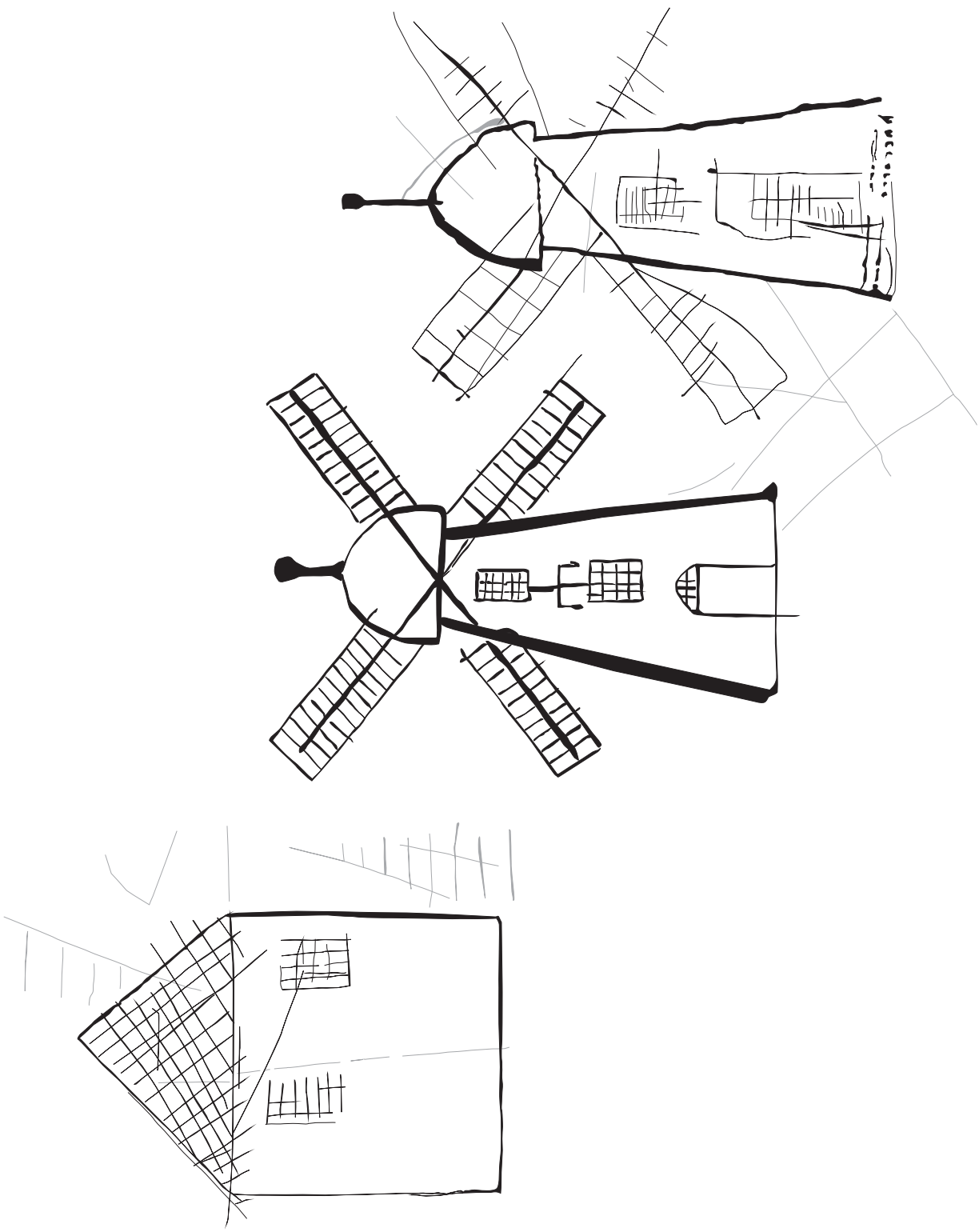


Figure 12: Graffiti of house and windmills on wooden door to cog house at scale 1:2. Grey lines show possible earlier layer of graffiti