

**HISTORIC BUILDING SURVEY:
DONINGTON METHODIST CHAPEL, CHURCH STREET,
DONINGTON, LINCOLNSHIRE**

Planning Application: H04-0579-09
NGR: TF 2086 3581
Oasis Reference: allenarc1-98673
AAL Site Code: DOME 11
Global Accession Number: LCNCC: 2011.54



Report prepared for
Ms Rebecca Taylor-Georgeson

By
Allen Archaeology Limited
Report Number 2011022

April 2011



The
Authority on
Archaeological
Planning
Services



Contents

Summary	1
1.0 Introduction	2
2.0 Site Location and Description	2
3.0 Planning Background	2
4.0 Archaeological and Historical Background	2
5.0 Methodology	2
6.0 Results	3
7.0 Discussion and Conclusion	4
8.0 Acknowledgements	4
9.0 References	5

List of Appendices

Appendix 1: Colour Plates	6
Appendix 2: Photographic Archive List	20

List of Figures

- Figure 1:** Site location at scale 1:25,000, with the site in red
- Figure 2:** Site location at scale 1:1000, with the site outlined in red. Numbered arrows indicate location and orientation of general area shots. All other photographs located on Figure 3
- Figure 3:** Ground floor plan of Methodist Chapel at scale 1:200. Numbered arrows indicate location and orientation of photographs
- Figure 4:** Elevation and section drawings at scale 1:150

List of Plates

- Plate 1 (Shot 1):** East elevation of the chapel and porch, looking west from Church Street
- Plate 2 (Shot 3):** Representative shot of lancet window on east elevation with stone hood mould and label stops, looking west
- Plate 3 (Shot 2):** Representative shot of one of two windows with a label mould, stone lintel and stone sill on the main entrance, looking west
- Plate 4 (Shot 14):** Date stone on south elevation, looking north
- Plate 5 (Shot 15):** South elevation of the chapel, looking north-west
- Plate 6 (Shot 16):** Window in south elevation, looking north
- Plate 7 (Shot 43):** The same window looking north from the interior of the building
- Plate 8 (Shot 17):** Window in gabled bay on south elevation, looking north
- Plate 9 (Shot 44):** Internal view of opposing window in gabled bay on north elevation, looking north
- Plate 10 (Shot 18):** South elevation of extension adjacent to the chapel, looking north-west
- Plate 11 (Shot 21):** Close-up of the door to the old schoolroom, showing yellow brick dressings. Note the join in the two phases of brickwork to the right of the door
- Plate 12 (Shot 22):** General view along the south elevation of the earlier buildings west of the chapel, looking east-north-east

- Plate 13 (Shot 23):** Detail of window in old schoolroom, looking north-west
Plate 14 (Shot 24): Detail of window with stone sill and segmental arch on south elevation, looking north
Plate 15 (Shot 26): General view of the vestibule interior, looking north-east
Plate 16 (Shot 27): View of chapel interior, looking west towards the pulpit
Plate 17 (Shot 28): View of chapel interior, looking east
Plate 18 (Shot 29): Close-up of one of two doors with stained glass panel on the east elevation of the chapel. Looking east
Plate 19 (Shot 30): North elevation of the chapel, looking north
Plate 20 (Shot 31): South elevation of the chapel, looking south
Plate 21 (Shot 45): Detail of one of eight ventilation holes in the chapel. Looking south
Plate 22 (Shot 33): General view of room adjacent to chapel, looking north-west
Plate 23 (Shot 35): Close-up of fireplace, looking north
Plate 24 (Shot 36): Rear of apsidal recess in chapel, looking east-south-east
Plate 25 (Shot 37): The old schoolroom, looking west
Plate 26 (Shot 38): Representative shot of sash window in south elevation of the old school room, looking south
Plate 27 (Shot 39): Bathroom 1 in westernmost block, looking west
Plate 28 (Shot 40): Washing facilities in westernmost block, looking north-west
Plate 29 (Shot 41): Bathroom 2 in westernmost block, looking north-west
Plate 30 (shot 42): Kitchen area in westernmost block, looking south-east

Document Control

Element	Name	Date
Report prepared by:	Maria Piirainen	12/04/2011
Illustrations prepared by:	Maria Piirainen	11/04/2011
Report edited by:	Chris Clay	13/04/2011
Report produced by:	AAL 20110022	14/04/2011

Allen Archaeology Limited reports are printed double-sided and on 100% recycled paper to reduce our carbon footprint.

Summary

- Allen Archaeology Limited was commissioned by Ms Rebecca Taylor-Georgeson to carry out an historic building survey of an early 20th century Methodist Chapel on Church Street in Donington, Lincolnshire in advance of its conversion into a dwelling.
- The chapel dates from 1903, having replaced two earlier 19th century Methodist chapels on the same site. The schoolroom of the earlier chapel has been incorporated into the 1903 building.
- The chapel is built of red bricks in English Bond in a neo-Gothic style with tall lancet windows and cusped tracery. The stained glass windows of the chapel are in an Art Nouveau style. Most of the internal fixtures and fittings have been removed, including the benches.
- To the west is the earlier schoolroom which has simple segmental arches over the openings, with a suspended ceiling and modern décor internally.

1.0 Introduction

- 1.1 Allen Archaeology Limited (hereafter AAL) was commissioned by Ms Rebecca Taylor-Georgeson to undertake an historic building survey of the former Methodist Chapel on Church Street in Donington, Lincolnshire, prior to its conversion to a private dwelling.
- 1.2 The methodology conforms to recommendations set by the Historic Environment Officer at Lincolnshire County Council and the specification prepared by this company (AAL 2011).
- 1.3 A copy of the survey report and the full project archive will be submitted to The Collection (Lincoln Museum) within six months of the completion of the report, where it will be stored under the LCCM Accession Code LCNCC 2011.54.

2.0 Site Location and Description

- 2.1 Donington is in the administrative district of South Holland, approximately 13.5km west-south-west of Boston and 42km south-east of Lincoln. The Methodist Chapel is on the west side of Church Street, to the north of the historic core of the settlement, and centres on NGR TF 2086 3581.

3.0 Planning Background

- 3.1 A planning application has been submitted for '*Change of use of former Chapel to residential and demolition of part of rear of building*' (Planning Application Reference H04-0579-09), and has been approved with conditions. The planning conditions included the undertaking of a programme of historic building recording of the structures that will be affected by development.

4.0 Archaeological and Historical Background

- 4.1 Donington appears in the Domesday Book as *Duninctune*, from the Old English for 'village/farmstead of Dunn' (Cameron, 1998), at which time the land was in the ownership of St. Peter's of Peterborough and Count Alan. The Domesday Book mentions 27 'salt houses' in the parish (Morgan & Thorne 1986), suggesting a major salt making industry, and the local geology map shows medieval saltern mounds to the east and north-east of the village (British Geological Survey 1995).
- 4.2 The building that is the focus of the current project is the Methodist Chapel, built in 1903, on the site of two earlier Methodist Chapels, built in 1805 and 1833, and is a red brick building with ashlar dressings (Lincolnshire Historic Environment Record Reference 25529).

5.0 Methodology

- 5.1 The building survey was undertaken by the author on Friday 1st April 2011, using a Fujifilm Finepix twelve megapixel digital SLR camera. The weather was bright and sunny, and light was generally good, although there was little light available for some interior shots, in which instance a tripod and flash were used.

- 5.2 Photographs incorporated metric scales where appropriate, and all shots were located on scale plans of the buildings (Figures 2 and 3). A selection of the photographs is included in this report (See Appendix 1), and a list of all shots taken is reproduced in Appendix 2 at the end of the report.
- 5.3 Photographs were taken of the following: -
- All external elevations
 - All internal elevations, including internal walls and subdivisions
 - The roof structure of the buildings, internally and externally
 - The relationship of the structures to their surroundings
 - Architectural details, i.e. windows, doors, decorative brickwork, carpentry joints, re-used timbers and other significant features, fixtures or fittings. Generally a single representative shot was taken of particular features such as windows or openings of a single type that occurred more than once within each structure
 - A general internal photographic record of the building. Shots were taken of each room/discrete internal space from sufficient points to show the form, general appearance and methods of construction

6.0 Results (Figure 2 - 4)

- 6.1 The Methodist Chapel is built of red brick in English Bond brickwork. The building has a plain tiled double pitched gabled roof with crested ridge tiles and a parapet with stone coping on the east elevation; below are angled buttresses with ashlar dressings. An ornamental panel of cusped tracery crowns the apex of the roof on the east elevation (Plate 1).
- 6.2 The east elevation also has a pair of lancet arches containing Art Nouveau style stained glass windows with cusped tracery and stone hood mouldings, with a central two-centred arch also with a stained glass window and cusped tracery (Plates 1 and 2).
- 6.3 The eastern elevation provides the main entrance to the chapel through a protruding vestibule or porch. It too has a double pitched roof with a parapet with stone coping and an ornamental panel of cusped tracery at the apex, reflecting the design of the main east elevation. A pair of two light stained glass windows with cusped tracery and label moulds, stone lintels and stone sills face onto Church Street (Plates 1 and 3). The windows flank a double wooden door below a two-centred arch with hood moulding above. Along with a date stone from 1903, ashlar stones with inscribed names of local benefactors have been set into the walls at the eastern end of the chapel (Plate 4).
- 6.4 The north and south elevations are both in five bays with the penultimate bay to the south on each elevation rising to a gabled dormer, with a large two-centred window identical to that on the east elevation. The northernmost bay on each elevation is blank, with the remaining three bays having a two-centred arch with a two-light stained glass window with cusped tracery and stone sill (Plates 5-9). The stained glass is again decorated in an Art Nouveau style.
- 6.5 A range of ancillary buildings, including the old schoolroom of the previous chapel are situated west of the 1903 chapel, again in English Bond Brickwork with a double pitched slate roof throughout the majority of the structure, and a mono-pitched roof over the westernmost block. All window and door openings have segmental brick arches, and all openings have been boarded up apart from two wooden doors in the south elevation, one of which has yellow brick dressings (Plates

10 - 14). Adjacent to this door is a join in the brickwork likely to indicate the join between the 1903 phase of construction and the earlier buildings (Plate 11).

- 6.6 The interior of the porch or vestibule has wooden panelling covering the lower part of the walls and red and yellow quarry tiles cover the floor (Plate 15).
- 6.7 The chapel has a roof structure of large arched braces resting on moulded corbels. The chapel has been stripped off its benches, although wooden panelling remains around the walls and there is a raised platform or pulpit set into an apsidal recess, fitted with Art Nouveau stained glass panels (Plate 16). The apsidal recess is flanked by two wooden doors with stained glass panels and wooden tracery above, which are mirrored by identical doors on the east elevation into the porch (Plates 16-18).
- 6.8 Along each of the north and south elevations are four small ventilation holes, each fitted with a wooden hatch that can be opened and closed as required (Plates 19 - 21).
- 6.9 The room to the west of the chapel has a modern suspended ceiling and tall windows with fixed lights, all of which have been boarded up from the outside. There is a black painted cast iron fire place with tiled surround on the north elevation (Plates 22 - 24). A door on the west partition wall leads into the school room of the earlier chapel. The wooden panelling is continued from the chapel around the lower part of the walls.
- 6.10 The old schoolroom also has a modern suspended ceiling (Plate 25), with two vertically sliding sash windows each on the north and south elevations (Plate 26), which have again been boarded up from the outside. Two doors on the west wall lead into a toilet block to the south (Plates 27 - 29) and kitchen block to the north (Plate 30).

7.0 Discussion and Conclusion

- 7.1 The existing Methodist Chapel dates back to 1903, and was erected on a site of two previous Methodist chapels of earlier 19th century date. The earlier schoolroom extends to the west of the 1903 and is visible on the First Edition Ordnance Survey Map of 1889. A join in the brickwork visible in the south elevation (Plate 11) defines the join between the earlier and later phases of building. An ancillary room contemporary with the 1903 chapel connects this earlier structure to the chapel proper, and has a dog-leg wall in its south elevation aligned north-west to south-east, broadly following the alignment of the property boundary to its south.
- 7.2 The 1903 chapel takes influences from both the neo-Gothic styles in its lancet windows, two centred arches, cusped tracery and hood moulds, along with Art Nouveau influences in the floral motified stained glass windows that are prevalent throughout the chapel. Both styles were fashionable at the time of the chapel's design and construction. The earlier buildings to the west are much more basic in design with simple segmental brick arches over the openings, and one doorway with yellow brick dressings.

8.0 Acknowledgements

- 8.1 Allen Archaeology Limited would like to thank Ms Rebecca Taylor-Georgeson for this commission.

9.0 References

British Geological Survey, 1995, *Boston. England and Wales Sheet 128. Solid and Drift Geology. 1:50000 Provisional Series*. Keyworth, Nottingham: British Geological Survey

Cameron, K., 1998, *A dictionary of Lincolnshire place-names*, English Place-Name Society, University of Nottingham, Nottingham

Child, M., 2008, *Shire Classics: Discovering Church Architecture. A Glossary of terms*, Shire Publications, Oxford

Clay, C., 2011, *Specification for a historic building survey: Donington, Lincolnshire*, Allen Archaeology

Cocke, T., Findlay D., Halsey, R and Williamson E., 1996, *Recording a church: an illustrated glossary*, Practical Handbook in Archaeology 7. Council for British Archaeology, York

English Heritage, 2006, *Understanding Historic Buildings: A guide to good recording practice*. English Heritage

Lincolnshire County Council, 2009, *Lincolnshire Archaeology Handbook: A Manual of Archaeological Practice*. Lincolnshire County Council Archaeology Section

Morgan, P. and Thorn, C., (eds.), 1986, *Domesday Book: vol.31: Lincolnshire*, Phillimore & Co. Ltd, Chichester

Brunskill, R.W., 2000, *Vernacular Architecture. An Illustrated Handbook*, Faber and Faber, London

Brunskill, R.W., 2004, *Traditional Buildings of Britain*, Cassell in association with Peter Crawley, London

Brunskill, R.W., 2009, *Brick and Clay Buildings in Britain.*, Yale University Press in association with Peter Crawley, New Haven and London

Pevsner N., & Harris J., 2002, *The Buildings of England: Lincolnshire, second edition*, Penguin, London

Appendix 1: Colour Plates



Plate 1 (Shot 1): East elevation of the chapel and porch, looking west from Church Street

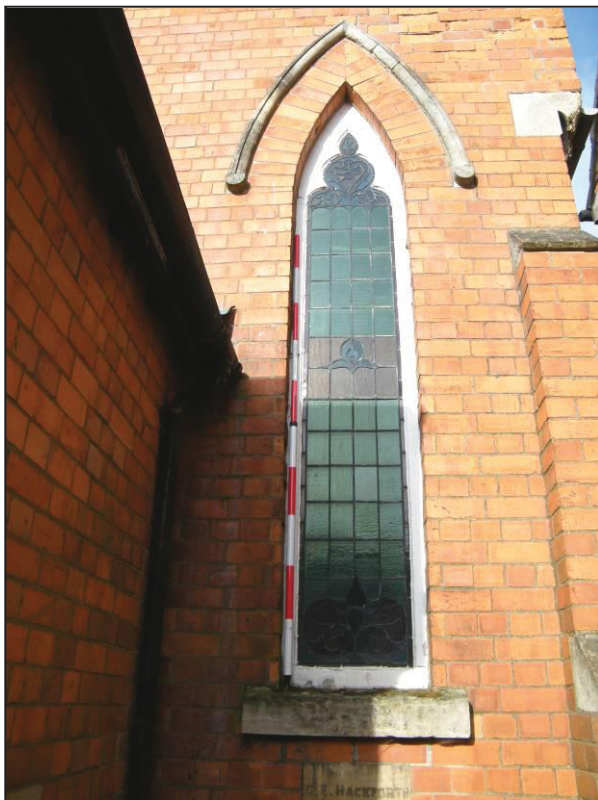


Plate 2 (Shot 3): Representative shot of lancet window on east elevation with stone hood mould and label stops, looking west



Plate 3 (Shot 2): Representative shot of one of two windows with a label mould, stone lintel and stone sill on the main entrance, looking west



Plate 4 (Shot 14): Date stone on south elevation, looking north



Plate 5 (Shot 15): South elevation of the chapel, looking north-west



Plate 6 (Shot 16): Window in south elevation, looking north

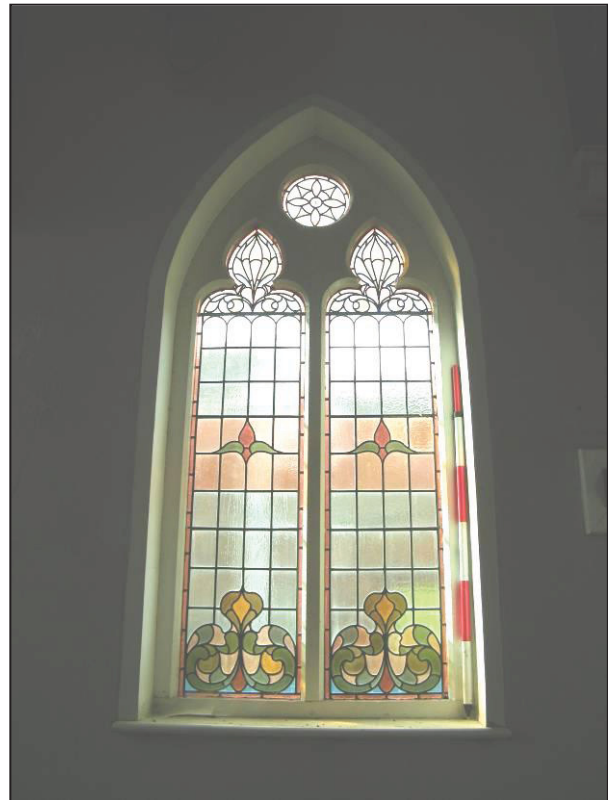


Plate 7 (Shot 43): The same window looking north from the interior of the building

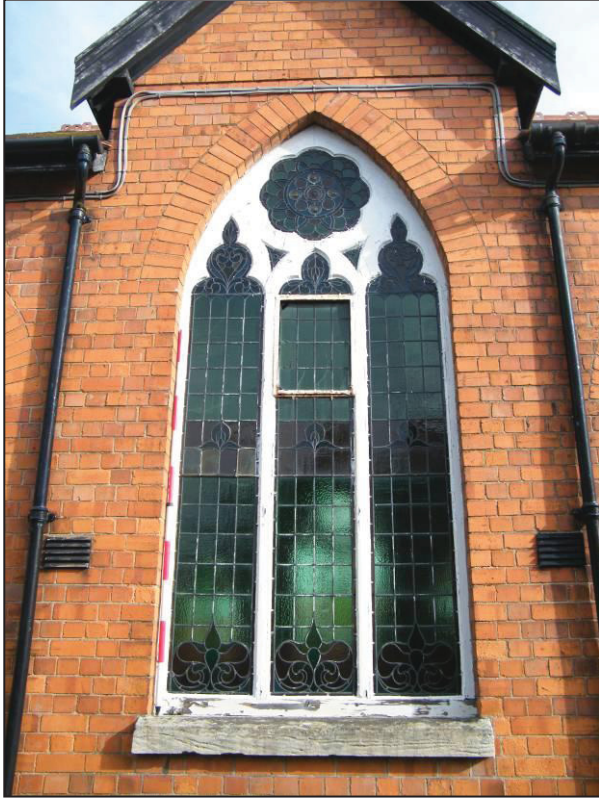


Plate 8 (Shot 17): Window in gabled bay on south elevation, looking north

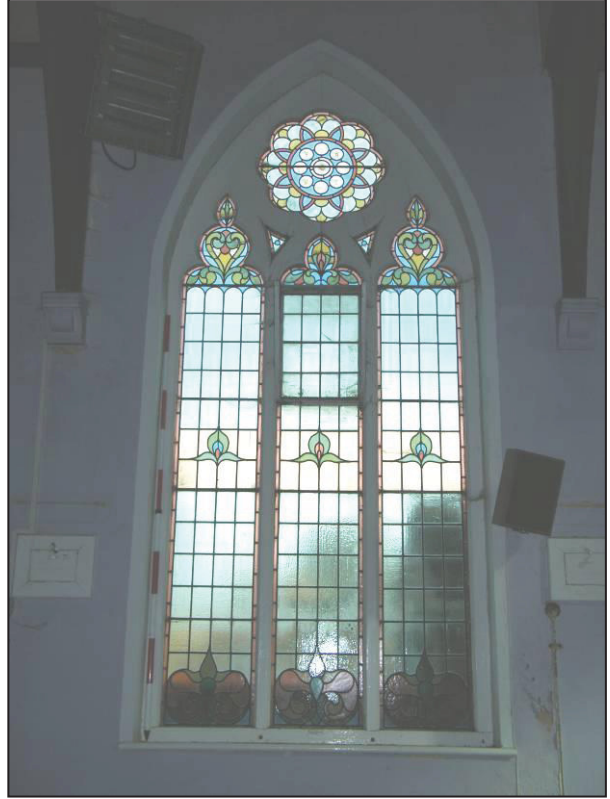


Plate 9 (Shot 44): Internal view of opposing window in gabled bay on north elevation, looking north



Plate 10 (Shot 18): South elevation of extension adjacent to the chapel, looking north-west



Plate 11 (Shot 21): Close-up of the door to the old schoolroom, showing yellow brick dressings. Note the join in the two phases of brickwork to the right of the door



Plate 12 (Shot 22): General view along the south elevation of the earlier buildings west of the chapel, looking east-north-east



Plate 13 (Shot 23): Detail of window in old schoolroom, looking north-west



Plate 14 (Shot 24): Detail of window with stone sill and segmental arch on south elevation, looking north



Plate 15 (Shot 26): General view of the vestibule interior, looking north-east



Plate 16 (Shot 27): View of chapel interior, looking west towards the pulpit



Plate 17 (Shot 28): View of chapel interior, looking east



Plate 18 (Shot 29): Close-up of one of two doors with stained glass panel on the east elevation of the chapel. Looking east



Plate 19 (Shot 30): North elevation of the chapel, looking north



Plate 20 (Shot 31): South elevation of the chapel, looking south



Plate 21 (Shot 45): Detail of one of eight ventilation holes in the chapel. Looking south



Plate 22 (Shot 33): General view of room adjacent to chapel, looking north-west



Plate 23 (Shot 35): Close-up of fireplace, looking north

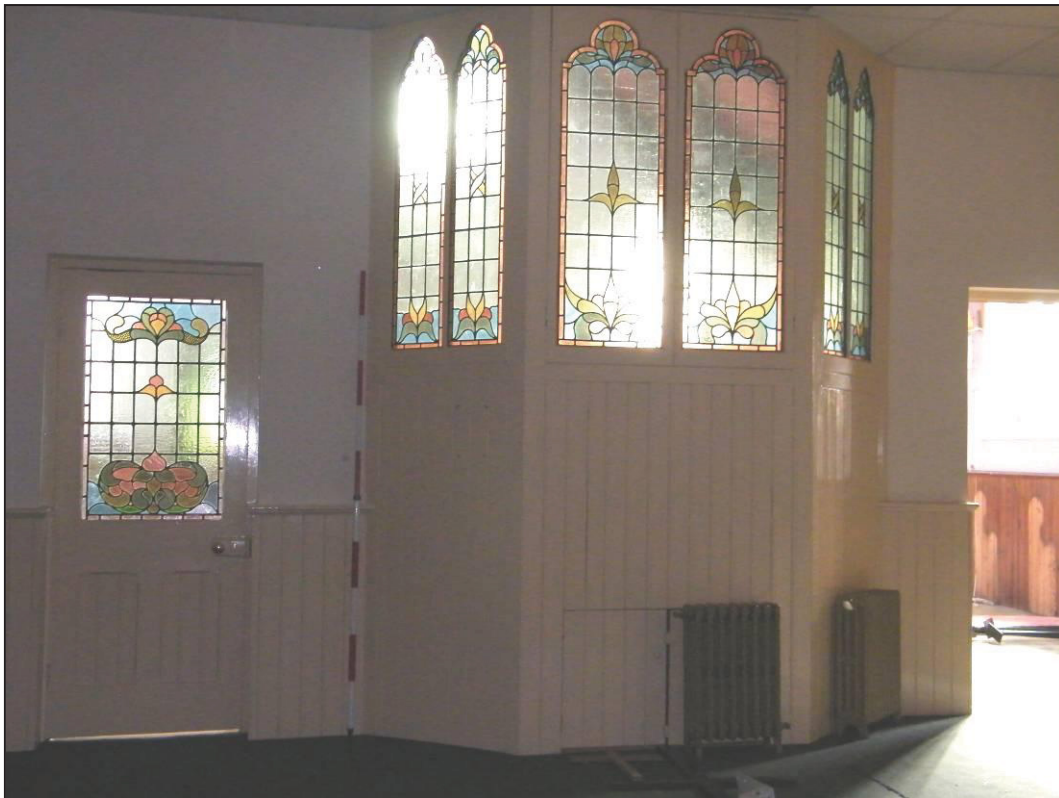


Plate 24 (Shot 36): Rear of apsidal recess in chapel, looking east-south-east



Plate 25 (Shot 37): The old schoolroom, looking west



Plate 26 (Shot 38): Representative shot of sash window in south elevation of the old school room, looking south



Plate 27 (Shot 39): Bathroom 1 in westernmost block, looking west



Plate 28 (Shot 40): Washing facilities in westernmost block, looking north-west



Plate 29 (Shot 41): Bathroom 2 in westernmost block, looking north-west



Plate 30 (Shot 42): Kitchen area in westernmost block, looking south-east

Appendix 2: Photographic Archive List

Shot No	Facing	Type	Description
01	W	Exterior	General view of east elevation and porch
02	W	Exterior/Detail	Detail of window on east elevation of porch
03	W	Exterior/Detail	Detail of lancet window on east elevation
04	SW	Exterior/Detail	Engraved ashlar block on north-east buttress of porch
05	S	Exterior/Detail	Engraved ashlar block on north elevation of porch
06	W	Exterior/Detail	Engraved ashlar block on east elevation
07	W	Exterior/Detail	Engraved ashlar block on north-east buttress
08	NW	Exterior/Detail	Engraved ashlar block on south-east buttress of porch
09	N	Exterior/Detail	Engraved ashlar block on south elevation of porch
10	W	Exterior/Detail	Engraved ashlar block on south elevation of porch
11	W	Exterior/Detail	Engraved ashlar block on south-east buttress
12	N	Exterior/Detail	Engraved ashlar block on south-east buttress
13	N	Exterior/Detail	Engraved ashlar block on south elevation
14	N	Exterior/Detail	Engraved ashlar block on south elevation
15	NW	Exterior	General shot of south elevation
16	N	Exterior/Detail	Detail of window on south elevation
17	N	Exterior/Detail	Detail of window in gabled bay on south elevation
18	NW	Exterior	General shot of extension, south elevation
19	N	Exterior	Joint between extensions, south elevation
20	WNW	Exterior	General shot of extension, south elevation
21	NW	Exterior/Detail	Door on extension, south elevation
22	ENE	Exterior	General shot of extensions, south elevations
23	NW	Exterior/Detail	Detail of window on south elevation of extension
24	N	Exterior/Detail	Detail of window on south elevation of extension
25	E	Exterior	Representative shot of north elevation of extensions
26	NE	Interior	General shot of vestibule interior
27	W	Interior	General shot of chapel interior
28	E	Interior	General shot of chapel interior
29	E	Exterior/Detail	Detail of door on south elevation of chapel
30	N	Interior	North elevation of chapel
31	S	Interior	South elevation of chapel
32	UP	Interior/Detail	Ceiling of chapel
33	NW	Interior	Interior of room to west of chapel
34	N	Interior	North elevation of room to west of chapel
35	N	Exterior/Detail	Detail of fireplace
36	ESE	Interior	Rear of apsidal recess in chapel
37	W	Interior	General shot of schoolroom interior
38	S	Exterior/Detail	Detail of sash window in south elevation of schoolroom
39	W	Interior	Bathroom 1
40	N	Interior	Washing facilities
41	W	Interior	Bathroom 2
42	SW	Interior	Kitchen area
43	S	Interior /Detail	Representative shot of window in chapel, south elevation
44	N	Interior /Detail	Representative shot of window in chapel, north elevation
45	S	Interior /Detail	Representative shot of ventilation hole in chapel, south elevation
46	NW	Exterior	General view of chapel from Church Street
47	WNW	Exterior	General view of chapel from Church Street
48	SW	Exterior	General view of chapel from Church Street

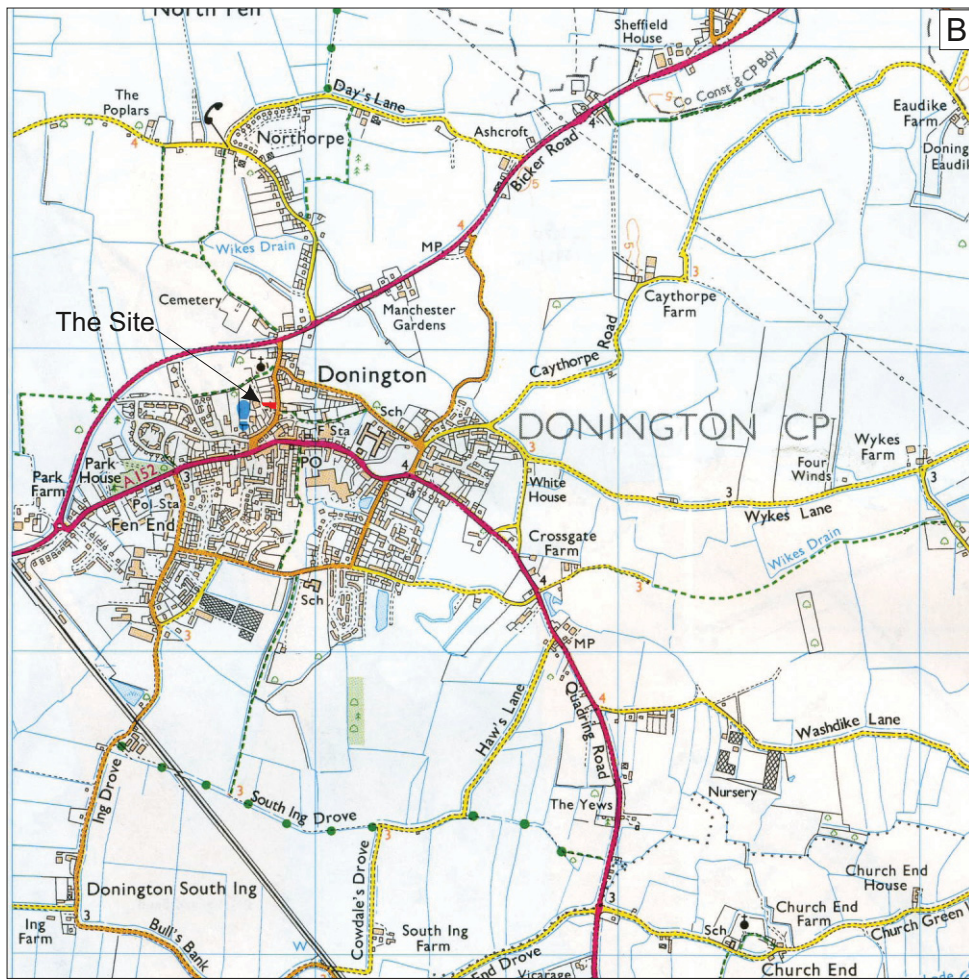
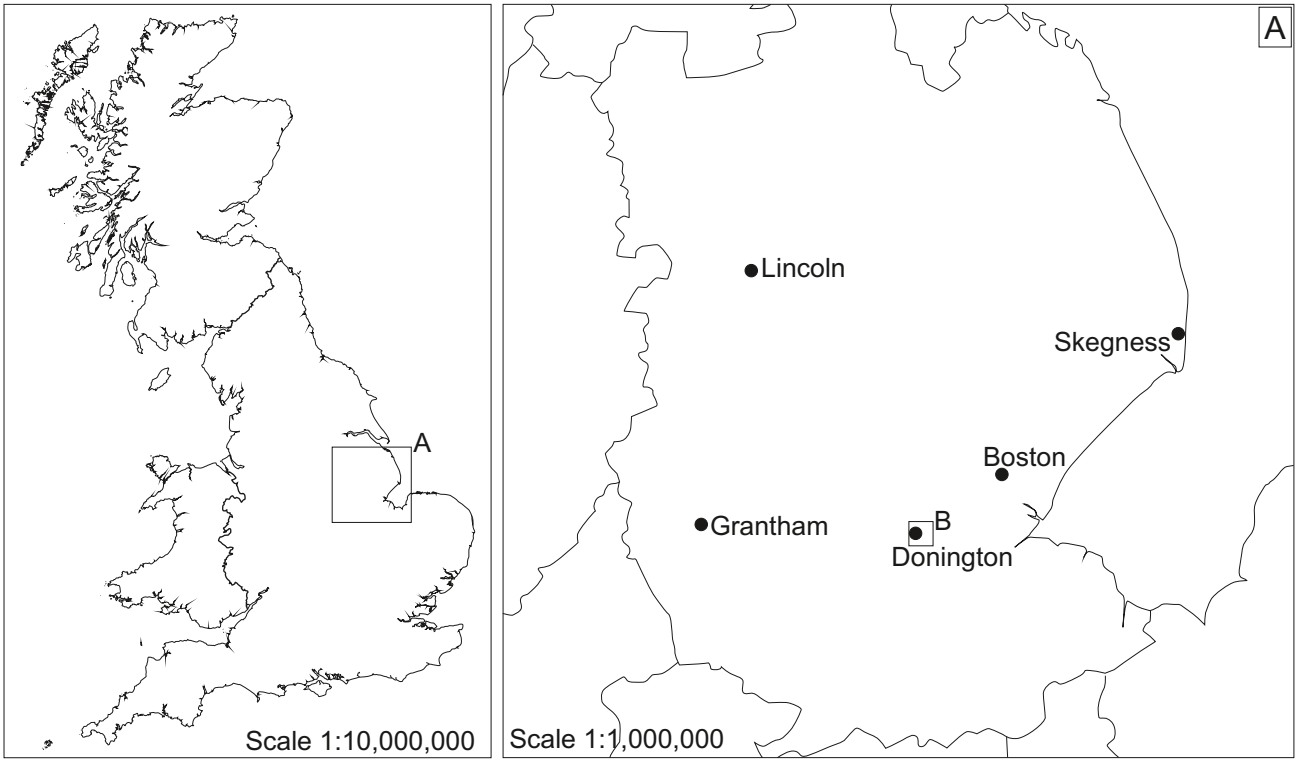


Figure 1: Site location at scale 1:25,000, with the site in red.
 © Crown Copyright 2006. All rights reserved. Licence Number 100047330

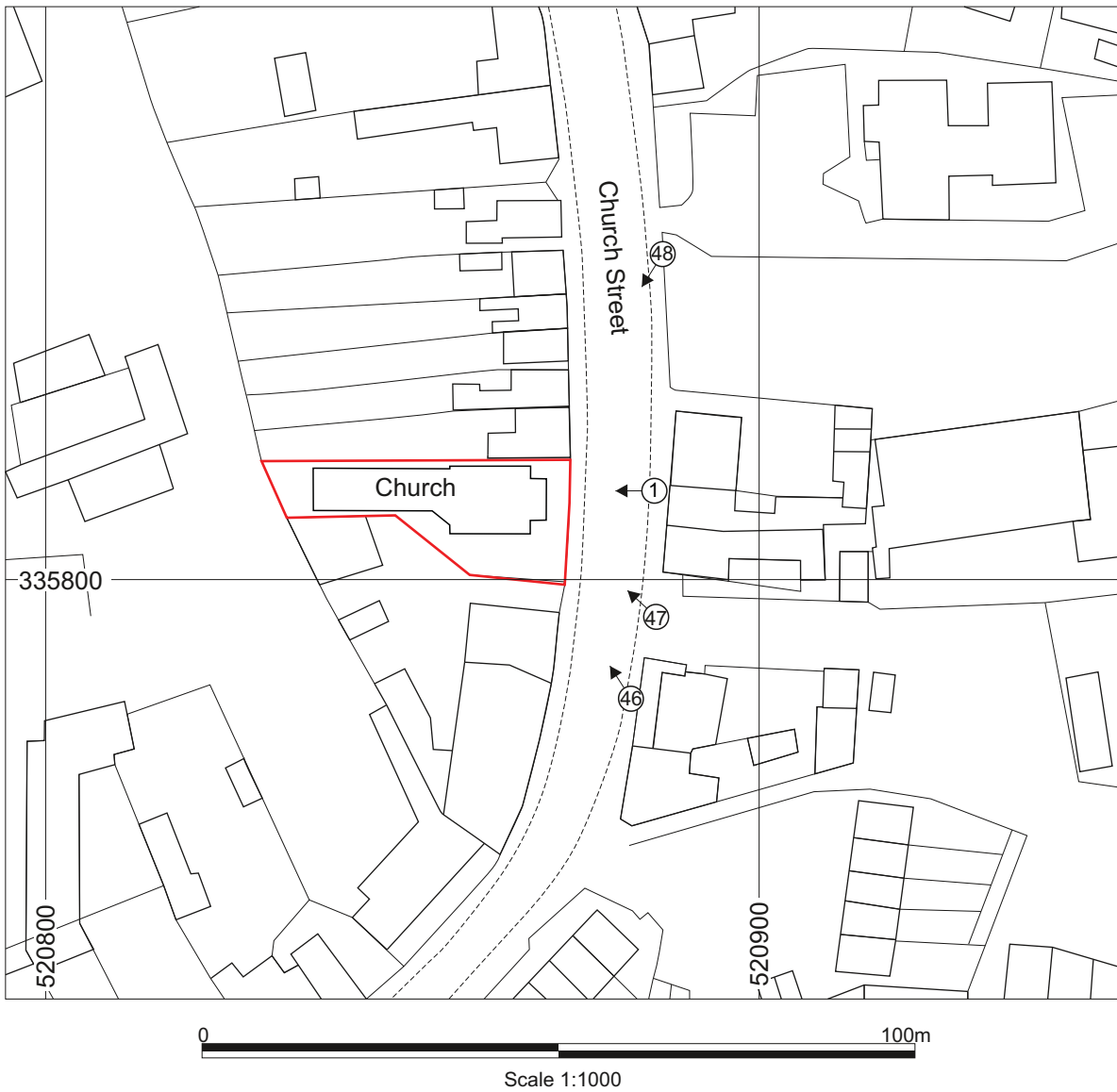


Figure 2: Site location at scale 1.1000, with the site outlined in red. Numbered arrows indicate location and orientation of general area shots. All other photographs located on Figure 3



Figure 3: Ground floor plan of Methodist Chapel at scale 1.200. Numbered arrows indicate location and orientation of photographs

East Elevation



South Elevation



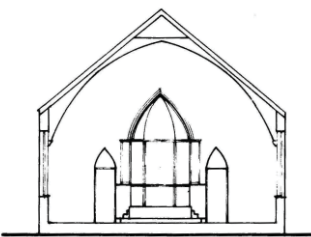
West Elevation



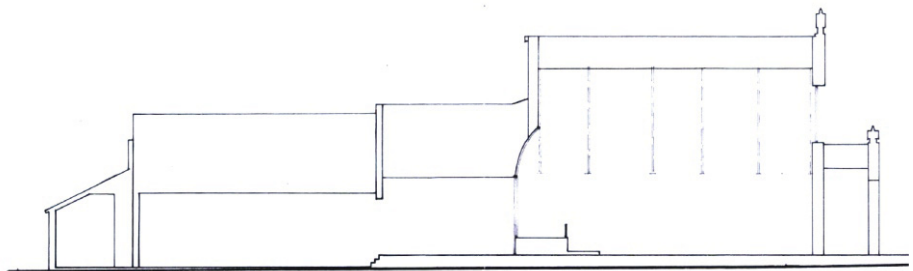
North Elevation



East - West Section



North - South Section



0 10m
Scale 1:150

Figure 4: Elevation and section drawings at scale 1.150



Allen Archaeology Limited
Website: www.allenarchaeology.co.uk

Company Registered in England and Wales No: 6935529

Lincoln

Unit 1C
Branston Business Park
Lincoln Road
Branston
Lincolnshire LN4 1NT

Tel/Fax: +44 (0) 1522 794400
Email: info@allenarchaeology.co.uk

Birmingham

Arion Business Centre
Harriet House
118 High Street
Birmingham
B23 6BG

Tel/Fax: +44 (0) 800 610 2545
Email: birmingham@allenarchaeology.co.uk

Cambridge

Wellington House
East Road
Cambridge
CB1 1BH

Tel/Fax: +44 (0) 800 610 2550
Email: cambridge@allenarchaeology.co.uk

Southampton

International House
Southampton International Business Park
George Curl Way
Southampton
SO18 2RZ

Tel: +44 (0) 800 610 2555
Email: southampton@allenarchaeology.co.uk