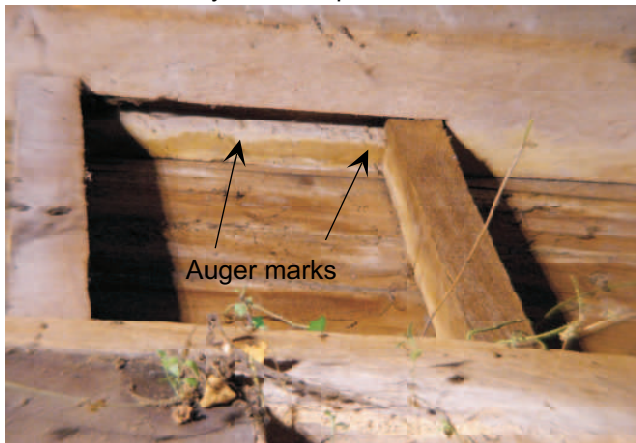


Boars Tye Barn, Silver End, Rivenhall, Essex.



The one visible original scarf joint on the rear wallplate. Housed bridled undersquinted abutments with lower lip and two edge pegs. This is a type very commonly found in groundsill plates from the medieval period onwards but rarely as a wallplate scarf.



Wall studs fitted above the midrails were fitted in pairs. One end was mortised into the rail - in this example the midrail and the area between the two studs was cut out as a long mortise. This enabled the studs to be placed into the frame after the main frame was assembled. Note the auger marks to sides of mortise.



Most examples in the barn have the long mortise as the lower element. They have filled over the years and are not easily visible within the structure unless viewed from a high level.