

Boars Tye Barn, Silver End, Rivenhall, Essex.



Heavily jowled tops to main posts of midstrey doorway with paired large holes for hanging original doors. Inserted posts bolted through tiebeam are for C20 opening lower and narrower doors.



Locking bar mortise.

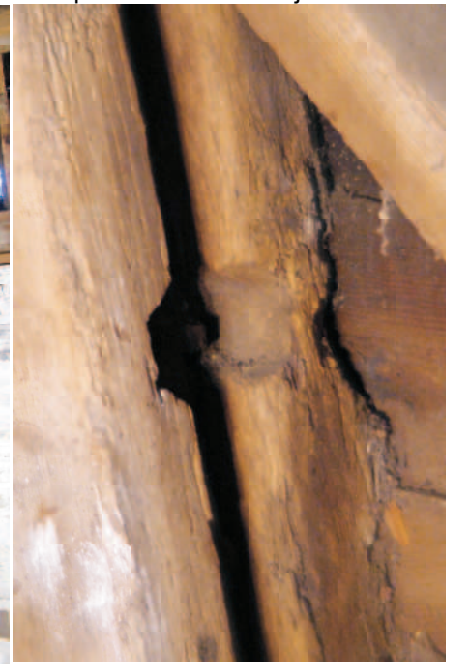


Eastern side frame to midstrey with different bracing pattern and inserted doorway. Boarding above appears to be original. Board slots at base.

Close detail of board slots at base of door post cut into lower jowl.



Walling to west side of midstrey is to same pattern as main body of barn. Heavy section long primary brace, no midrail but door head rail.



Hexagonal cut-out at centre of board slots, purpose unknown.