

LONG SECTION VIEWED TO THE NORTH WEST

Whitley House, Four Ash Hill, Baythorne End, Birdbrook. Essex.

Walls plastered, floor boards replaced and wall to floor joint sealed with sheet iron.

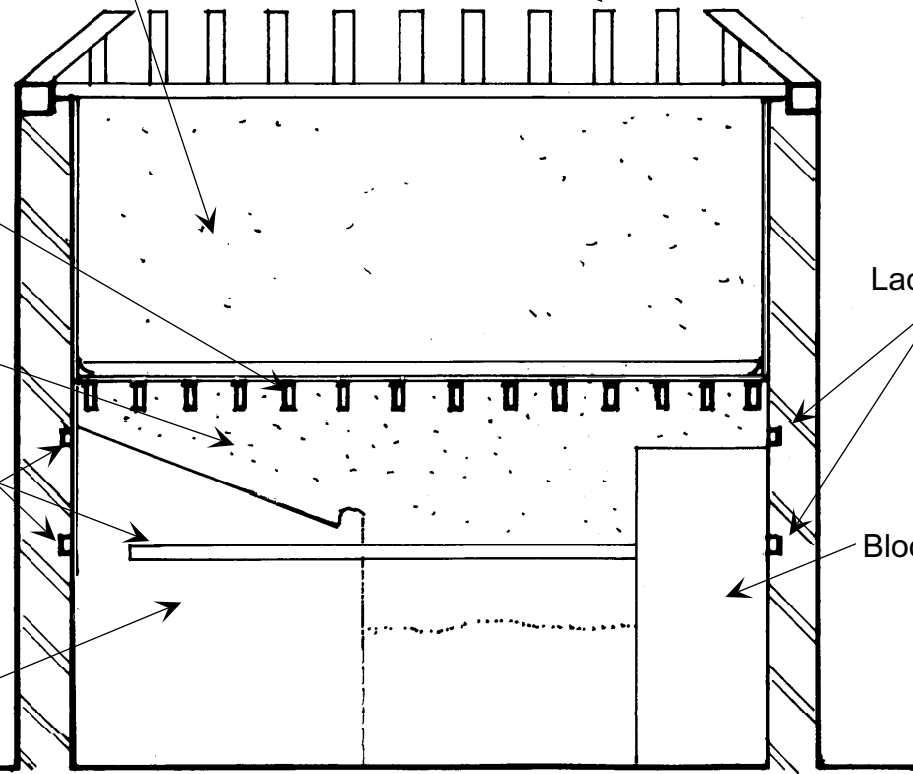
Hipped end to roof

Vertical section elm joists

Plaster

Lacing pieces set into brickwork with course of maltings long bricks above

Scar in plaster for end structure outline of former stalls



SECTION LOOKING ON THE THE NORTH EAST WALL.

Couple drafters with trenched collars every fourth rafter pair. Collars fixed with two pegs and two nails at each end

Heavily constructed timber frame for hoist over central bay

Feather edged boarding to partition with top ventilation slatted opening

Brick pediment

Handrail around stair opening

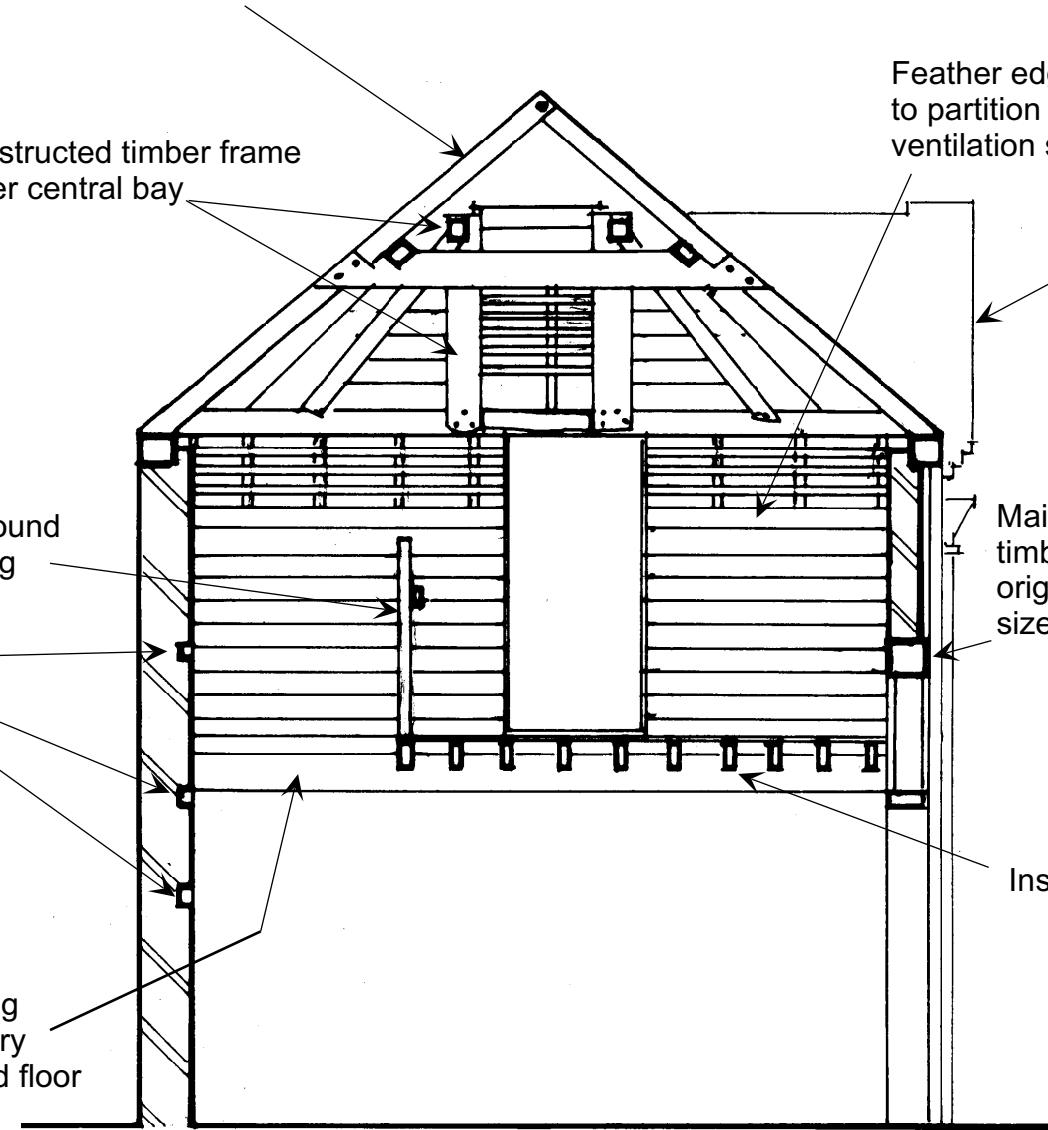
Lacing pieces

Blocked doorway

Stair opening contemporary with inserted floor

Main centre door timber lintol to original opening size

Inserted floor



SECTION TO THE NORTH EAST FROM STAIR OPENING.