

## Appendix 1: Colour plates



**Plate 1:** General view of Aldi store and car park looking north



**Plate 2:** Location of proposed extension looking west





**Plate 3:** Footings trench for extension showing tip-lines looking east (Section A-B)

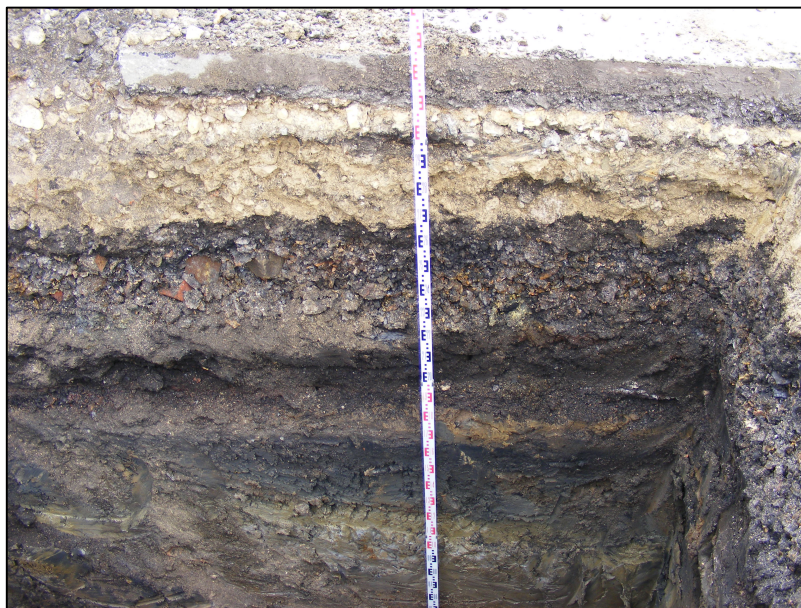


**Plate 4:** General view of footings trench looking north





**Plate 5:** Relict wall/foundations (114)  
Looking north  
(Section E-F)



**Plate 6:** View of manhole trench showing stratigraphic sequence looking north (Section C-D)