

**Land off Kipling Road
Stratford-upon-Avon
Warwickshire**

Archaeological Evaluation

for

Taylor Wimpey West Midlands


CA Project: 4213
CA Report: 13083

March 2013

Land off Kipling Road
Stratford-upon-Avon
Warwickshire

Archaeological Evaluation

CA Project: 4213
CA Report: 13083

prepared by	Charlotte Haines, Project Supervisor
date	20 March 2013
checked by	Richard Young, Project Manager
date	20 March 2013
approved by	Mark Collard, Head of Contracts
signed	
date	5 April 2013
issue	01

This report is confidential to the client. Cotswold Archaeology accepts no responsibility or liability to any third party to whom this report, or any part of it, is made known. Any such party relies upon this report entirely at their own risk. No part of this report may be reproduced by any means without permission.

© Cotswold Archaeology

Cirencester Building 11 Kemble Enterprise Park Kemble, Cirencester Gloucestershire, GL7 6BQ t. 01285 771022 f. 01285 771033	Milton Keynes Unit 4 Cromwell Business Centre Howard Way, Newport Pagnell MK16 9QS t. 01908 218320	Andover Office 49 Basepoint Business Centre Caxton Close, Andover Hampshire, SP10 3FG t. 01264 326549
e. enquiries@cotswoldarchaeology.co.uk		

CONTENTS

SUMMARY	2
1. INTRODUCTION.....	3
<i>The site</i>	3
<i>Archaeological background</i>	4
<i>Archaeological objectives</i>	4
<i>Methodology</i>	5
2. RESULTS (FIGS 2-3).....	5
<i>The finds and palaeoenvironmental evidence</i>	6
3. DISCUSSION.....	6
4. CA PROJECT TEAM.....	6
5. REFERENCES.....	7
APPENDIX A: CONTEXT DESCRIPTIONS	8
APPENDIX B: OASIS REPORT FORM	9

LIST OF ILLUSTRATIONS

- Fig. 1 Site location plan (1:25,000)
- Fig. 2 Trench location plan showing archaeological features (1:1000 & 1:200)
- Fig. 3 Trench 1: section and photograph (1:20)

SUMMARY

Project Name:	Land off Kipling Road
Location:	Stratford-upon-Avon, Warwickshire
NGR:	SP 2078 5395
Type:	Evaluation
Date:	12 March 2013
Planning Reference:	R10/00016/OUT
Location of Archive:	To be deposited with Warwickshire Museum
Accession Number:	T1206
Site Code:	KPR13

An archaeological evaluation was undertaken by Cotswold Archaeology in March 2013 at Land off Kipling Road, Stratford-upon-Avon, Warwickshire. Two trenches were excavated.

An undated ditch was observed. The ditch was aligned parallel to the eastern site boundary and is likely to represent an agricultural drainage feature associated with the post-medieval field system identified to the north in 2012.



1. INTRODUCTION

- 1.1 In March 2013 Cotswold Archaeology (CA) carried out an archaeological evaluation for Taylor Wimpey West Midlands at Land off Kipling Road, Stratford-upon-Avon, Warwickshire (centred on NGR: SP 2078 5395 Fig. 1). The evaluation was carried out as an addendum to a programme of archaeological works (CA 2012) previously undertaken as a condition of planning consent for the erection of up to 120 dwellings, public open space incorporating community woodland, balancing pond and associated earthworks to facilitate surface water drainage, landscaping, car parking, and other ancillary works on the site. The extra work was undertaken at the request of Anna Stocks, Planning Archaeologist, Warwickshire Museum Field Services (WMFS), the archaeological advisor to Stratford-upon-Avon District Council (SUADC) due to the area of impact of the development being extended.
- 1.2 The evaluation was carried out in accordance with a detailed *Written Scheme of Investigation* (WSI) for archaeological evaluation produced by CA (2013) and approved by Anna Stocks. The fieldwork also followed the *Standard and Guidance for Archaeological Field Evaluation* (IfA 2009), the *Management of Archaeological Projects* (English Heritage 1991) and the *Management of Research Projects in the Historic Environment (MORPHE): Project Manager's Guide* (English Heritage 2006).

The site

- 1.3 The site is approximately 3.7ha and comprises two former pasture fields approximately 1.3km south-east of the historic core of Stratford-upon-Avon. It is bounded to the north-east and north-west by residential properties fronting the A3400 Shipston Road and Kipling Road, to the south-west by an area of rough grassland, young woodland and two large ponds linked by a watercourse, to the south-east by a field under rough pasture and set-aside woodland, and to the south by the A4390.
- 1.4 The underlying bedrock geology of the area is mapped as Mercia Mudstone formations of the Triassic period. This is overlain by drift deposits of Wasperton sands and gravels of the quaternary period (BGS 2013). A sand and gravel substrate was observed in both trenches.

Archaeological background

- 1.5 Although few archaeological sites have been previously recorded in the immediate vicinity, evidence for activity spanning the prehistoric, Roman, medieval, post-medieval and modern periods was identified during an archaeological evaluation on land off Shipston Road, Stratford-upon-Avon (JMHS 2011), located approximately 0.5km to the south of the development area.
- 1.6 The absence of further known archaeological sites may be due to a lack of previous archaeological investigations across the wider area rather than an absence of activity during the pre-medieval periods.
- 1.7 A geophysical survey undertaken in September 2011 revealed a few linear anomalies that may represent the infilled ditches of former field or enclosure boundaries and a few discrete positive anomalies that may represent pits (Stratascan 2011).
- 1.8 An archaeological evaluation of parts of the site, undertaken in October 2011 (CA 2012) identified a small number of ditches, seemingly representing elements of a post-medieval field system along with a number of undated ditches, possibly from the same pattern of cultivation (Fig. 2). A curvilinear ditch of unknown function was also identified during the evaluation.

Archaeological objectives

- 1.9 The objectives of the evaluation were to provide information about the archaeological resource within the site, including its presence/absence, character, extent, date, integrity, state of preservation and quality, in accordance with the *Standard and Guidance for Archaeological Field Evaluation* (IfA 2009). This information will enable Stratford-upon-Avon District Council to identify and assess the particular significance of any heritage asset, consider the impact of the proposed development upon it, and to avoid or minimise conflict between the heritage asset's conservation and any aspect of the development proposal, in line with the *National Planning Policy Framework* (DCLG 2012).

Methodology

- 1.10 The fieldwork comprised the excavation of two trenches measuring 1.8m in width and 50m in length in the locations shown on the attached plan (Fig. 2). Trenches were set out on OS National Grid (NGR) co-ordinates using Leica GPS and surveyed in accordance with CA Technical Manual 4 *Survey Manual* (2012).
- 1.11 All trenches were excavated by mechanical excavator equipped with a toothless grading bucket. All machine excavation was undertaken under constant archaeological supervision to the top of the first significant archaeological horizon or the natural substrate, whichever was encountered first. Where archaeological deposits were encountered they were excavated by hand in accordance with CA Technical Manual 1: *Fieldwork Recording Manual* (2007).
- 1.12 Deposits were assessed for their palaeoenvironmental potential in accordance with CA Technical Manual 2: *The Taking and Processing of Environmental and Other Samples from Archaeological Sites* (2003), no deposits were identified that required sampling. All artefacts recovered were processed in accordance with Technical Manual 3 *Treatment of Finds Immediately after Excavation* (1995).
- 1.13 The archive and artefacts from the evaluation are currently held by CA at their offices in Kemble. The site archive will be deposited with Warwickshire Museum under accession number T1206. A summary of information from this project, set out within Appendix B, will be entered onto the OASIS online database of archaeological projects in Britain.

2. RESULTS (FIGS 2-3)

- 2.1 This section provides an overview of the evaluation results; detailed summaries of the recorded contexts are to be found in Appendix A.

Trench 1 (Figs 2 & 3)

- 2.2 Natural substrate 100 comprising red and yellow sand with pockets of gravel was revealed at a depth of 0.65m below present ground level (bpgl) in Trench 1. An

undated north-east/south-west aligned ditch 103 was observed cutting the natural substrate. The ditch was filled by mid pinkish brown silty sand 104 from which a small quantity of animal bone was recovered. The ditch was sealed by subsoil 101 which was in turn overlain by topsoil 100.

Trench 2 (Fig. 2)

- 2.3 No archaeological features were observed In Trench 2. Natural substrate 202 was revealed at an average depth of 0.50m bpgl and was sealed by subsoil 201 which was in turn covered by topsoil 200.

The finds evidence

- 2.4 A small quantity of animal bone, probably cow humerus, was recovered from ditch fill 104. It was not retained.

3. DISCUSSION

- 3.1 The undated ditch identified in Trench 1 is aligned parallel to the existing eastern field boundary and is likely to represent an agricultural drainage feature contemporary with the post-medieval field system identified to the north (CA 2012).
- 3.2 Despite the archaeological potential of the development area (see archaeological background above), the evaluation identified no evidence for activity on the site in the prehistoric, Roman, or medieval periods. The absence of such archaeological remains suggest pre-medieval activity, which is known to have occurred 0.5km to the south of the site, either did not extend as far the development area or was not exposed by the evaluation.

4. CA PROJECT TEAM

Fieldwork was undertaken by Charlotte Haines, assisted by Luke Brannlund. The report was written by Charlotte Haines. The illustrations were prepared by Jon Bennett. The archive has been compiled by Charlotte Haines and prepared for deposition by James Johnson. The project was managed for CA by Richard Young

5. REFERENCES

BGS (British Geological Survey) 2011 *Geology of Britain Viewer*
http://maps.bgs.ac.uk/geology_viewer_google/googleviewer.html Accessed 5 March 2013.

CA (Cotswold Archaeology) 2012 *Land off Kipling Road, Stratford-upon-Avon, Warwickshire: Archaeological Evaluation*, CA Report No. **11257**.

CA (Cotswold Archaeology) 2013 *Land off Kipling Road, Stratford-upon-Avon, Warwickshire: Written Scheme of Investigation for and Archaeological Evaluation*.

JMHS (John Moore Heritage Services) 2011 *Archaeological Evaluation on Land off Shipston Road, Stratford-upon-Avon, Warwickshire*.

Stratascan 2011 *Kipling Road, Stratford-upon-Avon, Warwickshire; Geophysical Survey*.

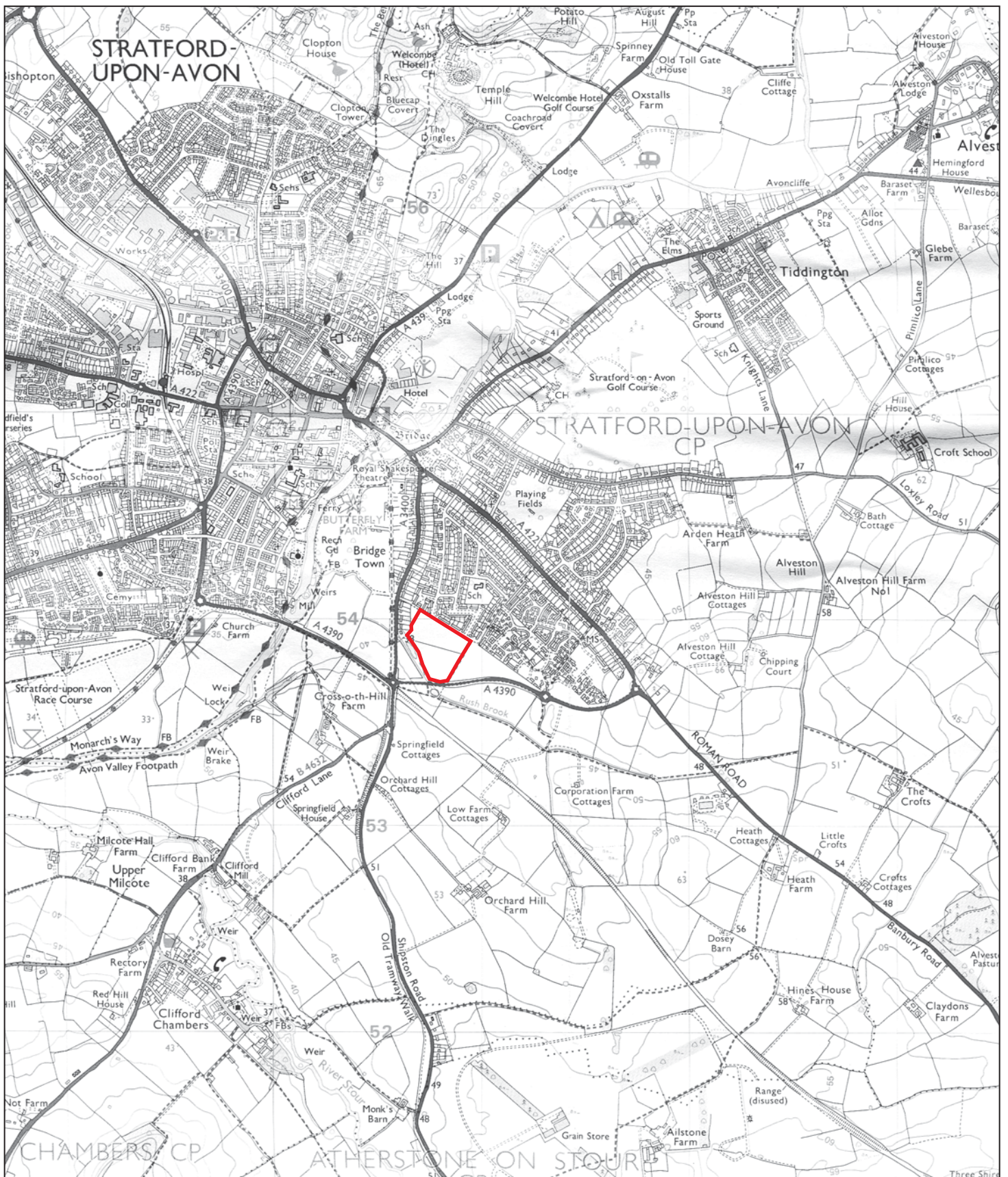


APPENDIX A: CONTEXT DESCRIPTIONS

Trench No.	Context No.	Type	Fill of	Context interpretation	Description	L (m)	W (m)	Depth /thickness (m)	Spot-date
1	100	Layer		topsoil	mid grey brown silty sand			0.40	
1	101	Layer		subsoil	mid pink brown silty sand with frequent pebbles			0.25	
1	102	Layer		natural substrate	red and yellow sands with pockets of gravel				
1	103	Cut		ditch	gently sloping sides, concave base	>3.50	1.01	0.24	
1	104	Fill	103	only fill of ditch	pink brown silty sand frequent pebbles	>3.50	1.01	0.24	
2	200	Layer		topsoil	mid grey brown silty sand			0.35	
2	201	Layer		subsoil	mid pink brown silty sand with frequent pebbles			0.15	
2	202	Layer		natural substrate	red and yellow sands with pockets of gravel				

APPENDIX B: OASIS REPORT FORM

PROJECT DETAILS		
Project Name	Land off Kipling Road; Archaeological Evaluation	
Short description	An archaeological evaluation was undertaken by Cotswold Archaeology in March 2013 at Land off Kipling Road, Stratford-upon-Avon, Warwickshire. Two trenches were excavated. An undated ditch was observed. The ditch was aligned parallel to the eastern site boundary and is likely to represent an agricultural drainage feature associated with the post-medieval field system identified to the north in 2012.	
Project dates	12 March 2013	
Project type	Evaluation	
Previous work	Field evaluation (CA 2012) Geophysical survey (Stratascan 2012)	
Future work	Unknown	
PROJECT LOCATION		
Site Location	Land off Kipling Road, Stratford-upon-Avon, Warwickshire	
Study area (M ² /ha)	3.7ha	
Site co-ordinates (8 Fig Grid Reference)	SP 2078 5395	
PROJECT CREATORS		
Name of organisation	Cotswold Archaeology	
Project Brief originator	Warwickshire County Council	
Project Design (WSI) originator	Cotswold Archaeology	
Project Manager	Richard Young	
Project Supervisor	Charlotte Haines	
MONUMENT TYPE	None	
SIGNIFICANT FINDS	None	
PROJECT ARCHIVES		
	Intended final location of archive	Content
Physical	n/a	None (not retained)
Paper	Warwickshire Museum	context sheets, trench sheets, section drawings
Digital	Warwickshire Museum	digital photos
BIBLIOGRAPHY		
CA (Cotswold Archaeology) 2013 <i>Land off Kipling Road, Stratford-upon-Avon, Warwickshire: Archaeological Evaluation</i> . CA typescript report 13083		



Cirencester 01285 771022
 Milton Keynes 01908 218320
www.cotswoldarchaeology.co.uk
 enquiries@cotswoldarchaeology.co.uk

PROJECT TITLE

Land off Kipling Road, Stratford-upon-Avon
 Warwickshire

FIGURE TITLE

Site location plan

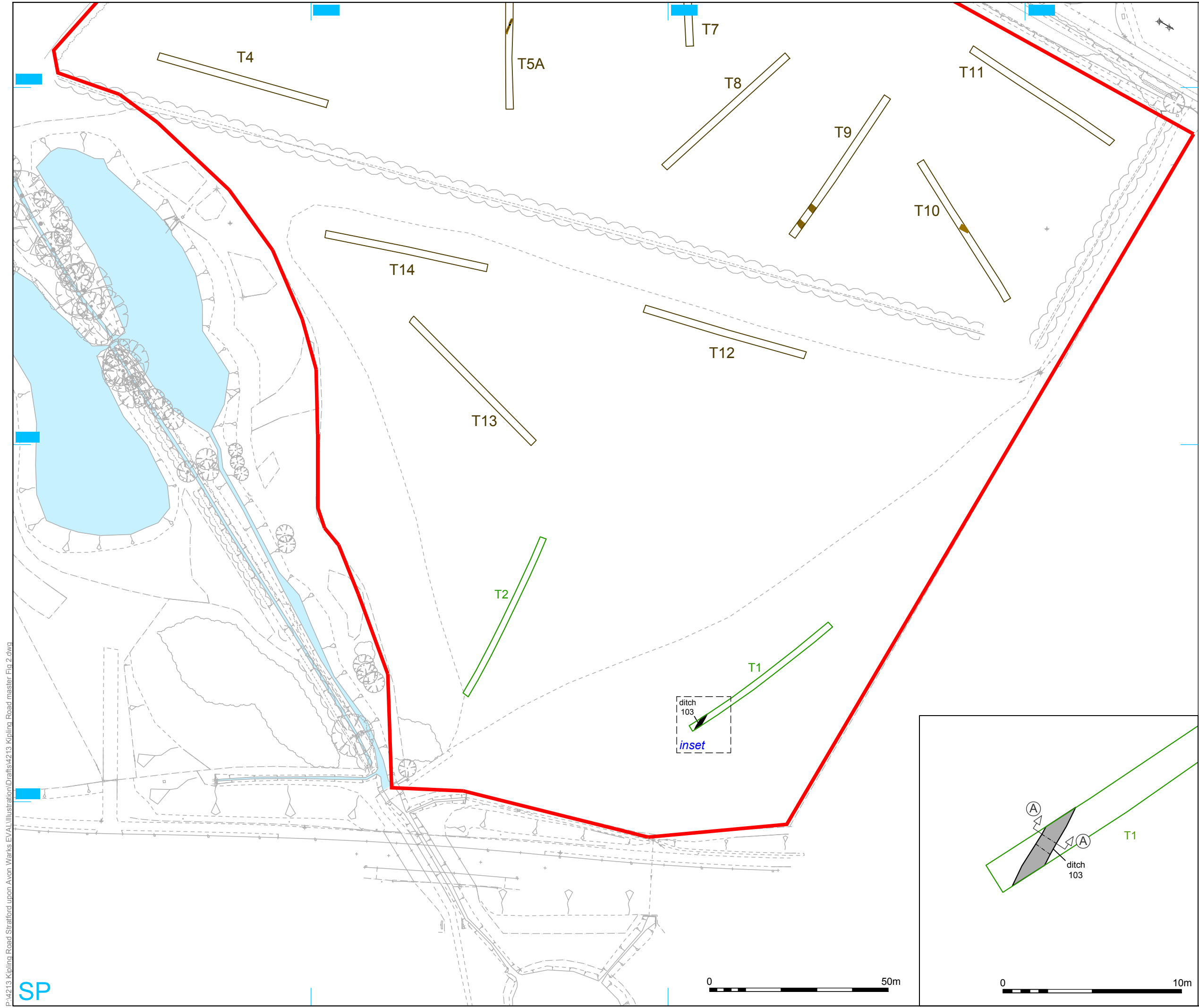


Reproduced from the 2002 Ordnance Survey Explorer map with the permission of Ordnance Survey on behalf of The Controller of Her Majesty's Stationery Office © Crown copyright
 Cotswold Archaeology Ltd 100002109

PROJECT NO. 4213 DATE 16-03-2013
 DRAWN BY JB REVISION 00
 APPROVED BY PJM SCALE@A4 1:25,000

FIGURE NO.

1



- site
- evaluation trench
- archaeological feature
- previous evaluation trench (CA 2012)
- previous archaeological feature (CA 2012)
- watercourse

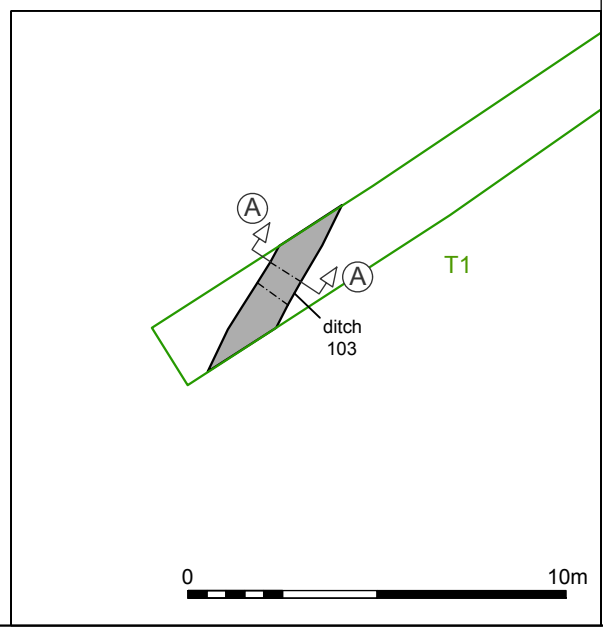
Reproduced from the Ordnance Survey Digital mapping with the permission of Ordnance Survey on behalf of The Controller of Her Majesty's Stationery Office © Crown copyright Cotswold Archaeological Trust 100002109.


 Cotswold Archaeology
 t 01285 771022
 f 01285 771033
 www.cotswoldarchaeology.co.uk
 enquiries@cotswoldarchaeology.co.uk

PROJECT TITLE
**Land off Kipling Road,
 Stratford-upon-Avon, Warwickshire**

FIGURE TITLE
**Trench location plan showing
 archaeological feature**

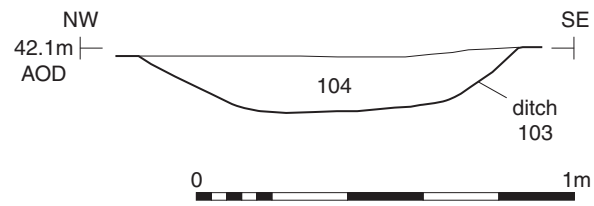
PROJECT NO.	4213	DATE	15-03-2013	FIGURE NO.
DRAWN BY	JB	REVISION	00	2
APPROVED BY	PJM	SCALE@A3	1:1000 & 1:200	



P:\4213 Kipling Road Stratford upon Avon Works EVAL\Illustration\Drafts\4213 Kipling Road master Fig 2.dwg



Trench 1, Section AA



Trench 1, ditch 103, looking north (scale 1m)



Cirencester 01285 771022
Milton Keynes 01908 218320
Andover 01264 326549
www.cotswoldarchaeology.co.uk
enquiries@cotswoldarchaeology.co.uk

PROJECT TITLE

Land off Kipling Road, Stratford-upon-Avon
Warwickshire

FIGURE TITLE

Trench 1: section and photograph

PROJECT NO. 4213 DATE 15-03-2013
DRAWN BY JB REVISION 00
APPROVED BY PJM SCALE@A4 1:20

FIGURE NO.

3