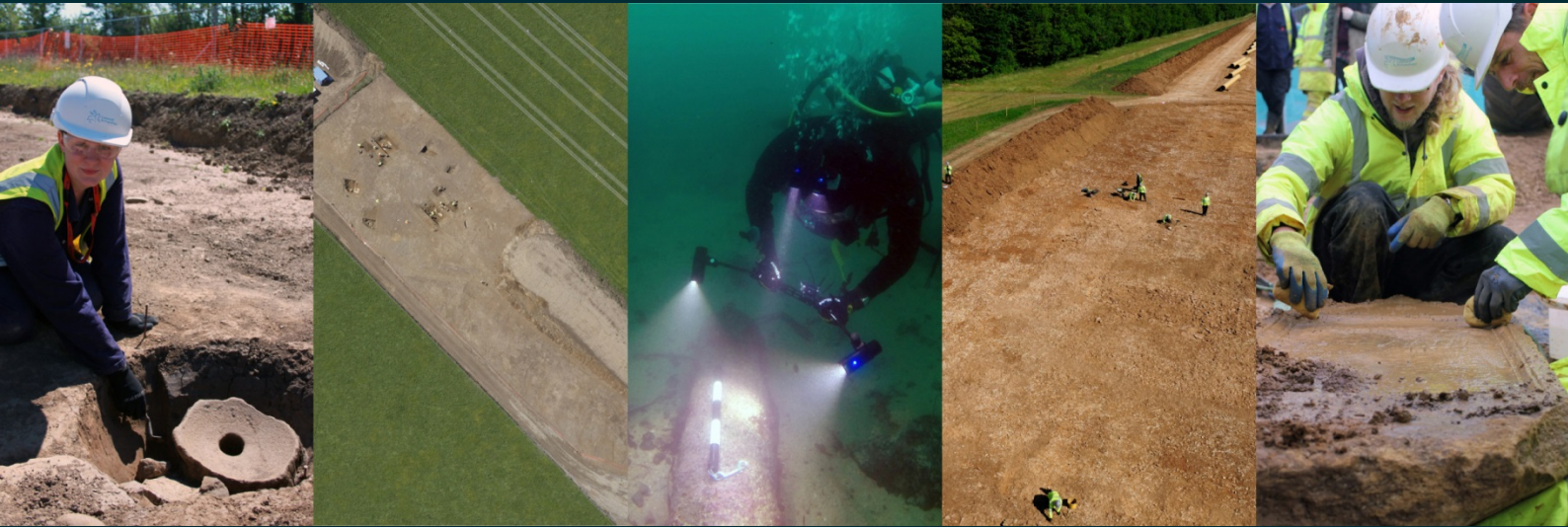




# Mount Kelly College Tavistock Devon

## *Archaeological Evaluation*



*for*  
CgMs Consulting

*on behalf of*  
Mount Kelly College and  
Blue Cedar Homes

CA Project: 880208  
CA Report: 17303

June 2017



Mount Kelly College  
Tavistock  
Devon

Archaeological Evaluation

CA Project: 880208  
CA Report: 17303



Document Control Grid						
Revision	Date	Author	Checked by	Status	Reasons for revision	Approved by
A	5 June 2017	Derek Evans	–	Internal review	–	Derek Evans
B	5 June 2017	Derek Evans	–	Consultant review	Minor revisions in line with comments	Derek Evans

*This report is confidential to the client. Cotswold Archaeology accepts no responsibility or liability to any third party to whom this report, or any part of it, is made known. Any such party relies upon this report entirely at their own risk. No part of this report may be reproduced by any means without permission.*

## CONTENTS

SUMMARY .....	2
1. INTRODUCTION.....	3
2. ARCHAEOLOGICAL BACKGROUND.....	4
3. AIMS AND OBJECTIVES.....	6
4. METHODOLOGY .....	6
5. RESULTS .....	7
6. DISCUSSION.....	7
7. CA PROJECT TEAM.....	7
8. REFERENCES.....	8
APPENDIX A: CONTEXT DESCRIPTIONS .....	9
APPENDIX B: OASIS REPORT FORM.....	10

## LIST OF ILLUSTRATIONS

- Fig. 1 Site location plan (1:25,000)
- Fig. 2 Trench location plan (1:500)
- Fig. 3 Trench 2: plan, section and photograph (1:100 & 1:20)
- Fig. 4 Trench 3: plan, section and photograph (1:100 & 1:20)



## SUMMARY

<b>Project Name:</b>	Land at Mount Kelly College
<b>Location:</b>	Tavistock, Devon
<b>NGR:</b>	249222 075292
<b>Type:</b>	Evaluation
<b>Date:</b>	15–16 May 2017
<b>Planning Reference:</b>	2092/16/FUL
<b>Location of Archive:</b>	N/A
<b>Site Code:</b>	MKC 17

In May 2017, Cotswold Archaeology carried out an archaeological evaluation of land at Mount Kelly College, Tavistock, Devon. A total of six trenches was excavated within the site.

The evaluation recorded a single undated ditch at the site. This ditch was on the broad alignment of a field system depicted in the site area on the 1802 Ordnance Survey map, and presumably represents an associated drainage or boundary feature.



## 1. INTRODUCTION

1.1 In May 2017, Cotswold Archaeology (CA) carried out an archaeological evaluation of land at Mount Kelly College, Tavistock, Devon (centred at NGR: 249222 075292; Fig. 1). The evaluation was commissioned by CgMs Consulting, on behalf of Mount Kelly College and Blue Cedar Homes.

1.2 West Devon Borough Council has granted planning permission for the demolition of an existing residential chalet building at the site and the development of 12 dwellings and associated infrastructure (planning ref: 2092/16/FUL). Condition 13 of this planning permission states:

*Prior to the commencement of development the implementation of a programme of archaeological work shall have been secured in accordance with a written scheme of investigation which shall have been submitted to and agreed in writing by the Local Planning Authority.*

*Development shall take place in strict accordance with the approved scheme, or such details as may be subsequently agreed in writing by the Local Planning Authority.*

1.3 The scope of this evaluation was defined in discussions with Bill Horner, County Archaeologist, Devon County Council Historic Environment Team (DCCHET; the archaeological advisors to West Devon Borough Council).

1.4 The evaluation was carried out in accordance with a Written Scheme of Investigation (WSI) prepared by CA and approved by Bill Horner. The evaluation was also in line with *Standard and guidance for archaeological field evaluation* (ClfA 2014), *Management of Research Projects in the Historic Environment (MoRPHE) PPN 3: Archaeological Excavation* (Historic England 2015) and *Management of Research Projects in the Historic Environment (MoRPHE): Project Manager's Guide* (Historic England 2015).

### **The site**

1.5 The proposed development site lies on the western side of Parkwood Road (the A386), approximately one mile north-east of the historic core of Tavistock. The site

encloses approximately 0.7ha and is currently mainly grassland, with a timber lodge standing in its south-eastern corner. The site is bordered to the east by the road, to the north-east by a residential property, to the north-west and west by pasture fields, and to the south by college buildings.

- 1.6 The site lies on an east-facing slope, which slopes downwards from a height of c. 108m Above Ordnance Datum (AOD) in its north-western corner to a low of c. 100m AOD in the southern part of the site.
- 1.7 The underlying bedrock geology of the site is mapped as Milton Abbot Formation (basaltic lava and basaltic tuff), which formed in the Carboniferous Period. There are no superficial deposits recorded in the main body of the site, although superficial deposits of alluvium (clay, silt, sand and gravel) are recorded along its eastern side (BGS 2017).

## 2. ARCHAEOLOGICAL BACKGROUND

- 2.1 The evaluation site has been the previous subject of a desk-based archaeological assessment (CgMs 2016) and a geophysical survey (GSB Prospection 2017). The following text is summarised from these sources.

### ***Prehistoric (pre-AD 43)***

- 2.2 Two stone axeheads were found at Cleave Farm, c. 650m south-west of the evaluation site.
- 2.3 A Bronze Age enclosure is recorded near Taviton Mill House, c. 700m south-east of the evaluation site. Several Bronze Age artefacts have been recovered in the vicinity of the Trendle Earthworks (see below).
- 2.4 The Trendle Earthworks are located c. 75m west of the evaluation site. These are the remains of an Iron Age univallate defended enclosure. They are a Scheduled Monument (National Heritage List Ref: 1002598; MDV3829). The enclosure is thought to have been inhabited from the 1st century BC to the 1st century AD. It would have been occupied by a small community which would have utilised the land surrounding the enclosure for agriculture and raw materials.

- 2.5 A trackway of probable late prehistoric date passed close to the Trendle Earthworks and crossed the River Tavy in the vicinity of Newton House, c. 160m south of the evaluation site.

### ***Roman (AD 43–AD 410)***

- 2.6 There is no recorded evidence of Roman activity in the vicinity of the evaluation site. The Trendle Earthworks are thought to have been abandoned as a settlement site shortly after the 1st century AD and the evaluation site is located a considerable distance from any known Roman settlements or roads.

### ***Early medieval (AD 410–1066) and medieval (1066–1539)***

- 2.7 It is likely that the evaluation site lay within agricultural land or woodland peripheral to known areas of early medieval and later medieval settlement focussed around Tavistock and the Abbey (c. 1.3km south-west of the evaluation site).
- 2.8 A 15th-century fulling mill is recorded on the River Tavy in the vicinity of the evaluation site. The precise location of the mill is not known, but the Devon Historic Environment Record places it c. 70m south of the evaluation site.

### ***Post-medieval (1539–1800) and modern (1800–present)***

- 2.9 The evaluation site probably lay within agricultural land on the floodplain of the River Tavy throughout the post-medieval period. The 1802 Ordnance Survey (OS) map shows the approximate site location within open fields close to the river bank.
- 2.10 Parkwood Road, which forms the eastern boundary of the evaluation site, was established as a toll road by 1809.
- 2.11 The 1884–5 OS map shows the central and northern parts of the site as an open field, with the southern part within the grounds of Parkwood House, which was constructed in the 19th century. Several small buildings are shown in the south-eastern part of the site and at its western boundary. Further small buildings are recorded around the edges of the site on early 20th-century OS maps. These had mainly been removed by the time of the 1953–4 OS map.





### **Geophysical survey**

- 2.12 The geophysical survey of the site recorded no anomalies of archaeological interest, although several plough marks were identified, as well a small number of other anomalies interpreted as potentially agricultural in origin.

## **3. AIMS AND OBJECTIVES**

- 3.1 The objectives of the evaluation were to provide further information about the likely archaeological resource within the site, including its presence/absence, character, extent, date, integrity, state of preservation and quality. This information will enable West Devon Borough Council to identify and assess the particular significance of any archaeological heritage assets within the site, consider the impact of the proposed development upon that significance and, if appropriate, develop strategies to avoid or minimise conflict between heritage asset conservation and the proposed development, in line with the *National Planning Policy Framework* (DCLG 2012).

## **4. METHODOLOGY**

- 4.1 The evaluation fieldwork comprised the excavation of six trenches (Fig. 2). All trenches were 20m long and 1.8m wide, although T2 was extended at its south-western end in order to further expose a ditch. The trenches were located to test geophysical anomalies, as well as to give a representative sample of the remainder of the site.
- 4.2 All trenches were excavated by a mechanical excavator equipped with a toothless grading bucket. All machine excavation was undertaken under constant archaeological supervision to the top of the natural substrate. Investigation and recording was carried out in line with *CA Technical Manual 1: Fieldwork Recording Manual*.
- 4.3 Deposits were assessed for their palaeoenvironmental potential in accordance with *CA Technical Manual 2: The Taking and Processing of Environmental and Other Samples from Archaeological Sites*.
- 4.4 As no significant archaeological features were identified during the archaeological works, no archive will be prepared. The results of the fieldwork will be held by



DCCHET in the form of this report and the creation of an OASIS entry (including an uploaded copy of this report).

## 5. RESULTS

- 5.1 This section provides an overview of the evaluation results. Detailed summaries of the recorded contexts can be found in Appendix A.
- 5.2 The natural substrate comprised brown/blue silty clay with frequent stone inclusions. It was exposed at a depth of 0.4m–0.65m below the present ground level. It was sealed by 0.1m–0.25m of silty clay subsoil, which was covered in turn by 0.3m–0.45m of modern topsoil.
- 5.3 North-west/south-east aligned ditch 207/305 (Figs. 3 & 4) ran through T2 and T3. This ditch was 2.2m–2.6m wide and 0.5m–1m deep. It was cut into the natural substrate and sealed by the subsoil, and contained up to three undated silty fills. It was truncated in T2 by modern machine-dug pit 204.
- 5.4 T1 and T4–T6 contained no archaeological features.

## 6. DISCUSSION

- 6.1 The evaluation recorded a single undated ditch at the site. Ditch 207/305 is on the broad alignment of the field system depicted in the site area on the 1802 OS map, and presumably represents an associated drainage or boundary feature.
- 6.2 Ditch 207/305 matched a geophysical anomaly. There were no archaeological features corresponding to the other anomalies tested by the evaluation; these were presumably caused by relatively shallow sub-surface variations.

## 7. CA PROJECT TEAM

- 7.1 Fieldwork was undertaken by Simon Sworn, assisted by George Gandham. This report was written by Derek Evans. The report illustrations were prepared by Esther Escudero. The project was managed for CA by Derek Evans.

## 8. REFERENCES

BGS (British Geological Survey) 2017 *Geology of Britain Viewer*  
<http://www.bgs.ac.uk/discoveringGeology/geologyOfBritain/viewer.html>

Accessed 4 May 2017

CA (Cotswold Archaeology) 2017 *Mount Kelly College, Tavistock, Devon: Written Scheme of Investigation for an Archaeological Evaluation*

CgMs 2016 *Cultural Heritage Desk-Based Assessment: Land at Mount Kelly, Tavistock, Devon*

DCLG (Department of Communities and Local Government) 2012 *National Planning Policy Framework*

GSB Prospection 2017 *Geophysical Survey Report: Land at Mount Kelly, Tavistock, Devon* GSB Report **G16124**



## APPENDIX A: CONTEXT DESCRIPTIONS

Trench No.	Context No.	Type	Fill of	Context interpretation	Description	Width (m)	Depth (m)
1	100	Layer		Topsoil	Dark brown silty clay		0.3
1	101	Layer		Subsoil	Light brown silty clay with frequent stony inclusions		0.1
1	102	Layer		Natural	Light brown-blue silty clay with frequent large stone inclusions		
2	200	Layer		Topsoil	Dark brown silty clay		0.35
2	201	Layer		Subsoil	Light brown silty clay with frequent stony inclusions		0.1
2	202	Layer		Natural	Light brown-blue silty clay with frequent large stone inclusions		
2	203	Deposit	204	Fill of modern cut	Mixed redeposited natural, subsoil and topsoil		
2	204	Cut		Modern cut	Rectangular machine-dug cut. Unexcavated	1.9	
2	205	Deposit	207	Second (final) of ditch. Same as 303	Mid brown clayey silt with frequent stony inclusions		0.1
2	206	Deposit	207	First basal fill of ditch. Same as 306	Clayey silt with gravel inclusions		0.4
2	207	Cut		Ditch	NW/SE-aligned ditch	2.2	0.5
3	300	Layer		Topsoil	Dark brown silty clay		0.3
3	301	Layer		Subsoil	Light brown silty clay with frequent stony inclusions		0.2
3	302	Layer		Natural	Light brown-blue silty clay with frequent large stone inclusions		
3	303	Deposit	305	Third (final) fill of ditch. Same as 205	Mid brown clayey silt with frequent stony inclusions		0.5
3	304	Deposit	305	Second fill of ditch	Light brown clayey silt		0.3
3	305	Cut		Ditch	NW/SE-aligned ditch	2.6	1
3	306	Deposit	305	First (basal) fill of ditch. Same as 206	Clayey silt with gravel inclusions		0.5
4	400	Layer		Topsoil	Dark brown silty clay		0.4
4	401	Layer		Subsoil	Light brown silty clay with frequent stony inclusions		0.1
4	402	Layer		Natural	Light brown-blue silty clay with frequent large stone inclusions		
5	500	Layer		Topsoil	Dark brown silty clay		0.45
5	501	Layer		Subsoil	Light brown silty clay with frequent stony inclusions		0.2
5	502	Layer		Natural	Light brown-blue silty clay with frequent large stone inclusions		
6	600	Layer		Topsoil	Dark brown silty clay		0.35
6	601	Layer		Subsoil	Light brown silty clay with frequent stony inclusions		0.25
6	602	Layer		Natural	Light brown-blue silty clay with frequent large stone inclusions		

## APPENDIX B: OASIS REPORT FORM

<b>PROJECT DETAILS</b>		
Project name	Mount Kelly College, Tavistock, Devon: Archaeological Evaluation	
Short description	<p>In May 2017, Cotswold Archaeology carried out an archaeological evaluation of land at Mount Kelly College, Tavistock, Devon. A total of six trenches was excavated within the site.</p> <p>The evaluation recorded a single undated ditch at the site. This ditch was on the broad alignment of a field system depicted in the site area on the 1802 Ordnance Survey map, and presumably represents an associated drainage or boundary feature.</p>	
Project dates	15–16 May 2017	
Project type	Field evaluation	
Previous work	Desk-based assessment, CgMs 2016 Geophysical Survey, GSB Prospection 2017	
Future work	Unknown	
<b>PROJECT LOCATION</b>		
Site location	Mount Kelly College, Tavistock, Devon	
Study area (m <sup>2</sup> /ha)	0.7ha	
Site co-ordinates	249222 075292	
<b>PROJECT CREATORS</b>		
Name of organisation	Cotswold Archaeology	
Project brief originator	N/A	
Project design (WSI) originator	Cotswold Archaeology	
Project Manager	Derek Evans	
Project Supervisor	Simon Sworn	
<b>MONUMENT TYPE</b>		
	None	
<b>SIGNIFICANT FINDS</b>		
	None	
<b>PROJECT ARCHIVES</b>		
	Intended final location of archive	Archive contents
Physical	N/A	N/A
Paper	N/A	N/A
Digital	N/A	N/A
<b>BIBLIOGRAPHY</b>		
Cotswold Archaeology 2017 <i>Mount Kelly College, Tavistock, Devon: Archaeological Evaluation</i> CA typescript report 17303		





Andover 01264 347630  
 Cirencester 01285 771022  
 Exeter 01392 826185  
 Milton Keynes 01908 564660  
[www.cotswoldarchaeology.co.uk](http://www.cotswoldarchaeology.co.uk)  
[enquiries@cotswoldarchaeology.co.uk](mailto:enquiries@cotswoldarchaeology.co.uk)

**PROJECT TITLE**  
 Mount Kelly College, Tavistock, Devon

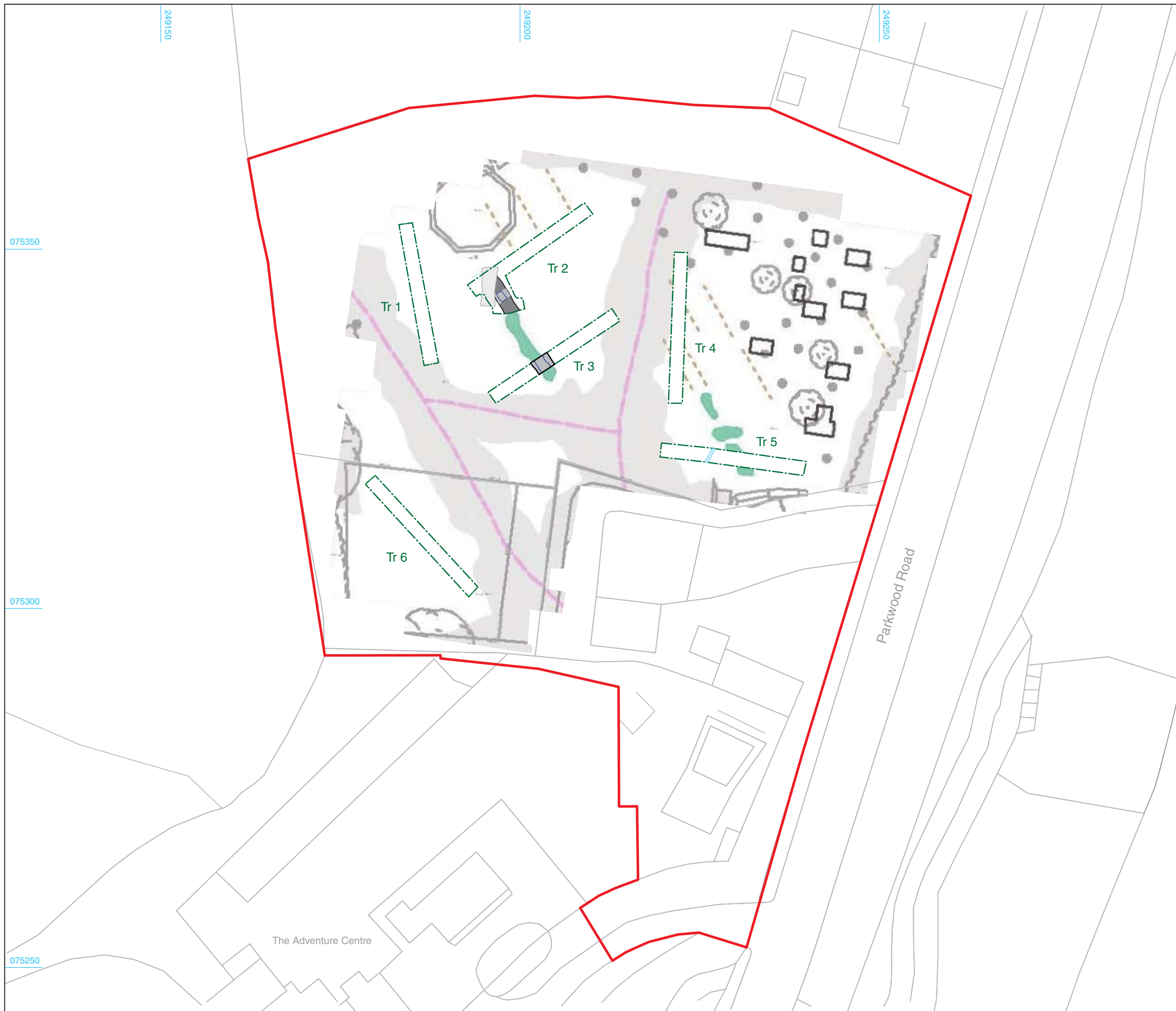
**FIGURE TITLE**  
 Site location plan



Reproduced from the digital Ordnance Survey Explorer map with the permission of Ordnance Survey on behalf of The Controller of Her Majesty's Stationery Office © Crown copyright Cotswold Archaeology Ltd 100002109

<b>DRAWN BY</b>	EE	<b>PROJECT NO.</b>	880208	<b>FIGURE NO.</b>
<b>CHECKED BY</b>	DJB	<b>DATE</b>	24/05/2017	<b>1</b>
<b>APPROVED BY</b>	DE	<b>SCALE</b>	@A4 1:25,000	





- Site boundary
- Evaluation trench
- Archaeological feature (excavated/unexcavated)
- Base of feature
- Modern
- Field drain

Geophysical Survey by  
GSB Prospection Ltd. (2016)

- Uncertain Origin (discrete anomaly)
- Pipe
- Ploughing
- Ferrous



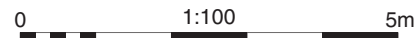
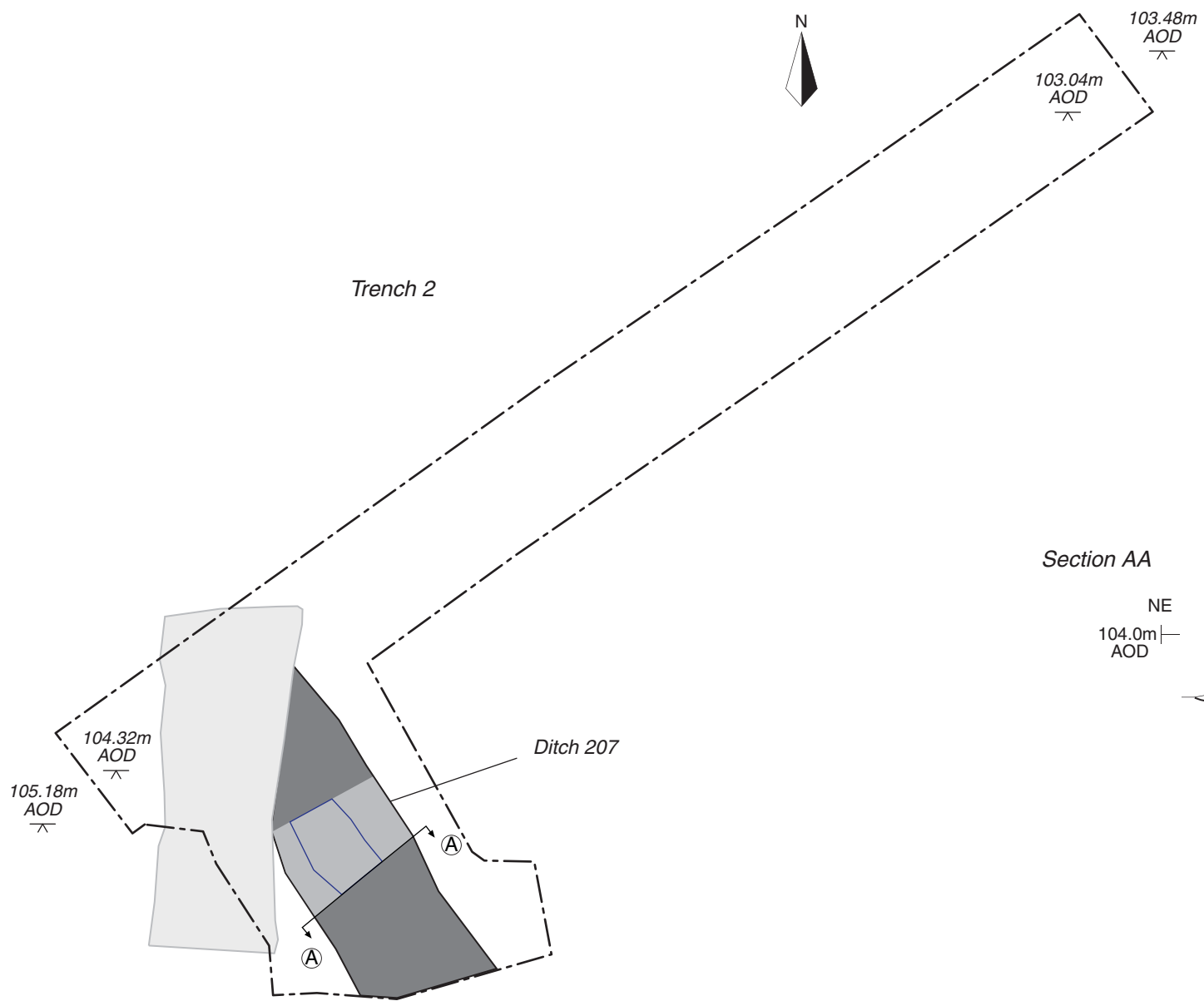
Reproduced from the digital Ordnance Survey Explorer map with the permission of Ordnance Survey on behalf of The Controller of Her Majesty's Stationary Office © Crown copyright Cotswold Archaeology Ltd 100002109

**Andover** 01264 347630  
**Cirencester** 01285 771022  
**Exeter** 01392 826185  
**Milton Keynes** 01908 564660  
[www.cotswoldarchaeology.co.uk](http://www.cotswoldarchaeology.co.uk)  
[enquiries@cotswoldarchaeology.co.uk](mailto:enquiries@cotswoldarchaeology.co.uk)

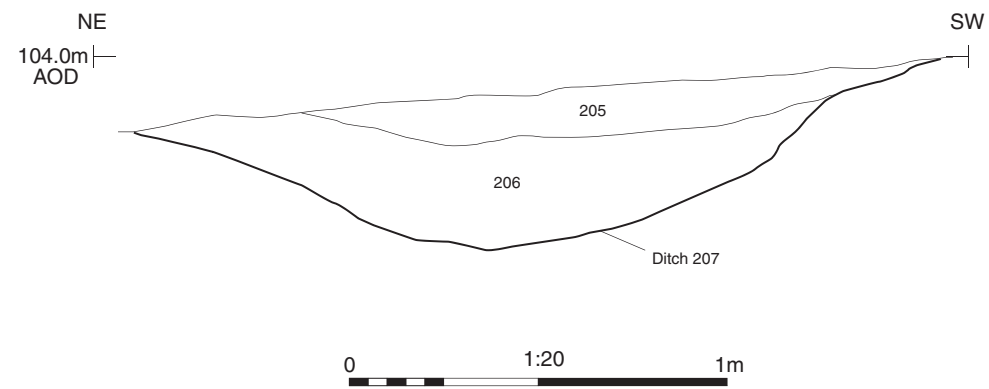
**PROJECT TITLE**  
Mount Kelly College, Tavistock, Devon

**FIGURE TITLE**  
Trench location plan

<b>DRAWN BY</b> EE	<b>PROJECT NO.</b> 880208	<b>FIGURE NO.</b>
<b>CHECKED BY</b> DJB	<b>DATE</b> 24/05/2017	<b>2</b>
<b>APPROVED BY</b> DE	<b>SCALE @A3</b> 1:500	



Section AA



- Evaluation trench
- Archaeological feature (excavated/unexcavated)
- Base of feature
- Modern
- Section location
- 100m AOD Highs



Ditch 207, looking south-east (1m scale)

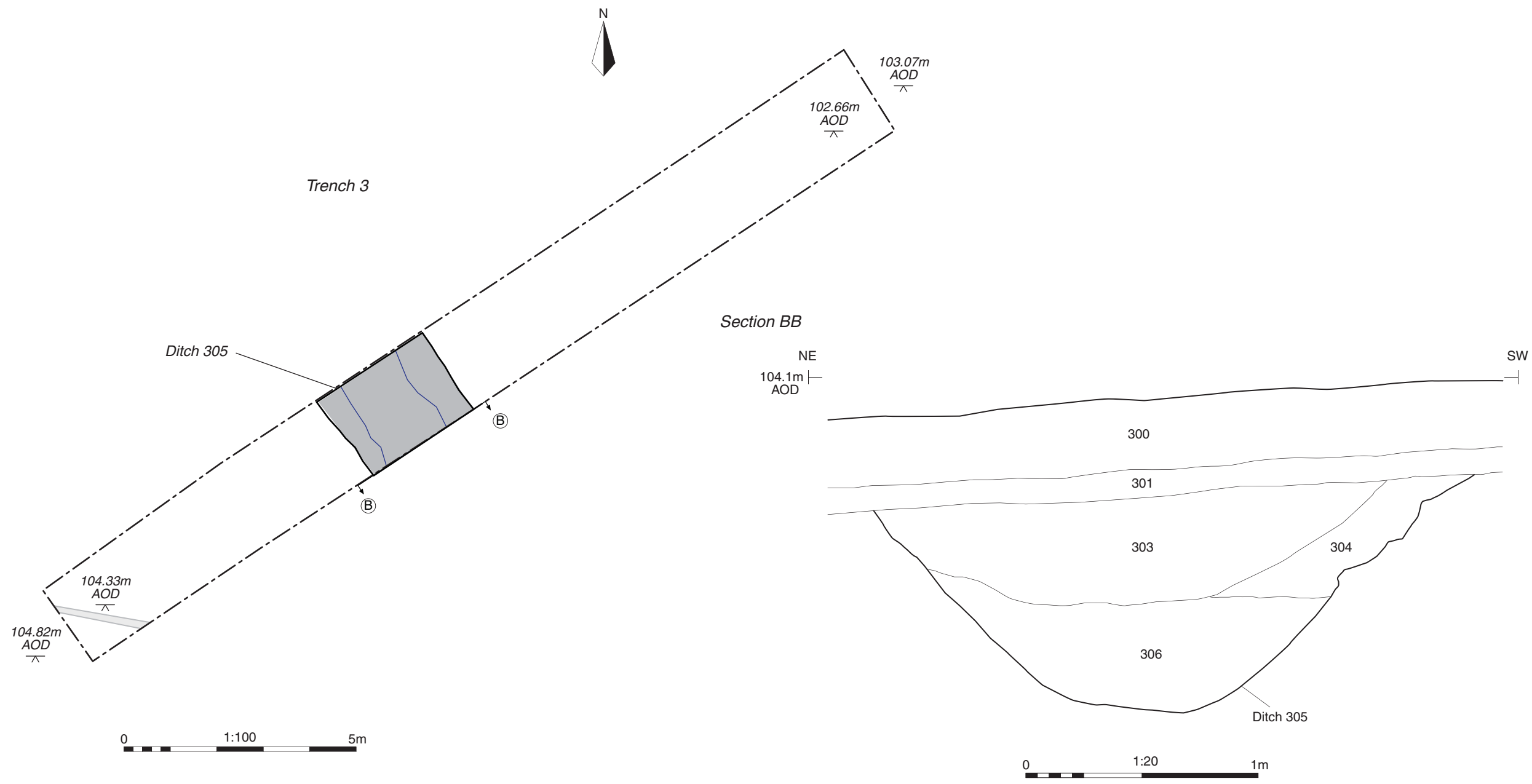

 Cotswold Archaeology  
 Andover 01264 347630  
 Cirencester 01285 771022  
 Exeter 01392 826185  
 Milton Keynes 01908 564660  
 www.cotswoldarchaeology.co.uk  
 enquiries@cotswoldarchaeology.co.uk

PROJECT TITLE  
 Mount Kelly College, Tavistock, Devon

FIGURE TITLE  
 Trench 2: plan, section and photograph

DRAWN BY EE PROJECT NO. 880208 FIGURE NO.  
 CHECKED BY DJB DATE 24/05/2017  
 APPROVED BY DE SCALE @A3 1:100 / 1:20 3





Ditch 305, looking south-east (1m scale)


  
 Andover 01264 347630  
 Cirencester 01285 771022  
 Exeter 01392 826185  
 Milton Keynes 01908 564660  
 www.cotswoldarchaeology.co.uk  
 enquiries@cotswoldarchaeology.co.uk

PROJECT TITLE  
 Mount Kelly College, Tavistock, Devon

FIGURE TITLE  
**Trench 3: plan, section and photograph**

DRAWN BY	EE	PROJECT NO.	880208	FIGURE NO.
CHECKED BY	DJB	DATE	24/05/2017	4
APPROVED BY	DE	SCALE @A3	1:100 / 1:20	

### **Andover Office**

Stanley House  
Walworth Road  
Andover  
Hampshire  
SP10 5LH

t: 01264 347630

### **Cirencester Office**

Building 11  
Kemble Enterprise Park  
Cirencester  
Gloucestershire  
GL7 6BQ

t: 01285 771022

### **Exeter Office**

Unit 53  
Basepoint Business Centre  
Yeoford Way  
Marsh Barton Trading Estate  
Exeter  
EX2 8LB

t: 01392 826185

### **Milton Keynes Office**

41 Burners Lane South  
Kiln Farm  
Milton Keynes  
Buckinghamshire  
MK11 3HA

t: 01908 564660