

West Hoathly Brickworks Phase 2 (Part 12)
Sharpthorne
West Sussex
Archaeological Watching Brief



for
Ibstock Brick Limited

CA Project: 2151
CA Report: 17622

October 2017



West Hoathly Brickworks Phase 2 (Part 12) Sharpthorne West Sussex

Archaeological Watching Brief

CA Project: 2151
CA Report: 17622



Document Control Grid						
Revision	Date	Author	Checked by	Status	Reasons for revision	Approved by
A	25-10-17	Steve Bush	Ray Kennedy	Internal review	General Edit	Richard Greatorex

This report is confidential to the client. Cotswold Archaeology accepts no responsibility or liability to any third party to whom this report, or any part of it, is made known. Any such party relies upon this report entirely at their own risk. No part of this report may be reproduced by any means without permission.

CONTENTS

SUMMARY	2
1. INTRODUCTION.....	3
2. ARCHAEOLOGICAL BACKGROUND.....	4
3. AIMS AND OBJECTIVES.....	6
4. METHODOLOGY	6
5. RESULTS (FIGS 2-4).....	7
6. DISCUSSION.....	7
7. CA PROJECT TEAM.....	7
8. REFERENCES.....	8
APPENDIX A: CONTEXT DESCRIPTIONS	11
APPENDIX B: OASIS REPORT FORM.....	12

LIST OF ILLUSTRATIONS

Figure 1	Site location plan (1:25,000)
Figure 2	Location of groundworks (1:2500).
Figure 3	Site plan showing archaeological features
Figure 4	Working Shots



SUMMARY

Project Name:	West Hoathly Brickworks Phase 2 (Part 12)
Location:	Sharpthorne, West Sussex
NGR:	537630 132860
Type:	Watching Brief
Date:	14 and 25 August 2017
Planning Reference:	HO/36/98
Location of Archive:	To be deposited with East Grinstead Museum
Site Code:	WHS 17

An archaeological watching brief was undertaken by Cotswold Archaeology as part of the latest phase of works associated with the extension of the clay quarry at West Hoathly Brickworks, Sharpthorne, West Sussex. The work formed part of the Phase 2 (Part 12) Extraction and followed on from archaeological work undertaken during the Phase 2 (Parts 1–11) Extraction.

An archaeologist was present during the extraction phase on mine pits that had been identified during a previous phase of works. All were similar to those identified previously on the site and are likely to have been the result of medieval iron ore and/or clay extraction.



1. INTRODUCTION

1.1 In August 2017 Cotswold Archaeology (CA) carried out an archaeological watching brief for Istock Brick Ltd at West Hoathly Brickworks, Sharpthorne, West Sussex (centred on NGR: 537630 132860; Fig. 1). The programme of archaeological recording formed part of ongoing archaeological work required to fulfil a condition attached to planning consent for an extension to the clay quarry attached to the brickworks (planning ref.: HO/36/98). The objective of this phase of the watching brief was to monitor the working face during extraction processes to observe where mine pits may be visible and need to be investigated and recorded.

1.2 The watching brief was carried out in accordance with a *brief* for archaeological recording prepared by Mr John Mills, Archaeologist for West Sussex County Council Economic and Environmental Policy Service (WSCCEEPS), the archaeological advisor to the Local Planning Authority (LPA), and with a subsequent detailed *Written Scheme of Investigation* (WSI) produced by CA (2003), and under a revised methodology produced by CA in 2006, and approved by the LPA acting on the advice of Mr Mills. The fieldwork also followed *Standard and guidance: Archaeological watching brief* (ClfA 2014), the *Recommended Standard Conditions for Archaeological Fieldwork, Recording and Post-Excavation Work (Development Control), Version 2b* issued by WSCCEEPS and the *Management of Archaeological Projects 2* (English Heritage 1991), the *Management of Research Projects in the Historic Environment (MORPHE): Project Manager's Guide* (EH 2006).

The site

1.3 The current works comprise the Phase 2 (Part 12) Extraction areas and follow on from the Phase 1 (CA 2001b) and Phase 2 (Parts 1–11) Extraction areas reported on previously (CA 2004a, 2004b, 2006, 2007a, 2007b, 2010, 2012, 2013, 2014, 2015, 2016). Additionally a watching brief was carried out in 2011 by CA during ground reduction for clay extraction of the Phase 2, Part 6 area previously stripped; no further archaeological remains were encountered in this area. The site lies at approximately 140m above Ordnance Datum (aOD) and comprises an area of former pasture which occupies a gentle north-facing slope and part of the eastern area of Mare Pit Wood.

- 1.4 The underlying geology of the area is mapped as Wadhurst Clay Formation Mudstone and Ironstone overlying Ashdown Beds Sandstones (BGS 2010). A yellow clay substrate overlaying interbedded ironstone deposits was exposed during the groundworks.

2. ARCHAEOLOGICAL BACKGROUND

- 2.1 The general background to the archaeological works at the quarry has been outlined elsewhere (e.g. CAT 1999a) and it is not intended in this section, to fully repeat that information. The results of the previous programmes of archaeological recording (Phase 1 and Phase 2 (Parts 1 to 11); Figure 2) are summarised below.

Prehistoric

- 2.2 Three flint flakes and a scraper were identified during the Phase 1 Extraction (CAT 2001b), a flint fabricator and an unutilised flake were identified during the Phase 2 (Part 4) Extraction (CA 2007a) and sixteen fragments of flint blades, cores and debitage during the Phase 2 (Part 7) Extraction (CA 2012). All were unstratified and date to the Late Neolithic/Early Bronze Age. A single flint flake of probable Early Neolithic or Mesolithic date was recovered from the topsoil during Phase 2 (Part 6) Extraction (CA 2010) and sixteen fragments of flint blades, cores and debitage were recovered from the subsoil during the Phase 3 (Part 7) Extraction broadly dated to the prehistoric period.

Medieval

- 2.3 An evaluation prior to the Phase 1 Extraction identified several undated features including a stone-filled ditch, a posthole and a pit containing burnt material (CAT 1999b). The ditch was fully exposed during a subsequent programme of archaeological recording, along with a number of pits and postholes to its east (CAT 2001b). Medieval pottery, dateable to the 11th to 14th centuries, was recovered from these features. They also contained iron slag, burnt sandstone and fired clay likely to have derived from the walls of a charcoal-fired furnace, although no *in situ* furnace structures were identified (ibid.).
- 2.4 Within the Phase 2 Extraction area, visible earthworks within Mare Pit Wood were archaeologically surveyed (CAT 2000 and CAT 2001a) and an archaeological

evaluation was undertaken within the northern part of the wood (CAT 2000). This work showed that the earthworks are likely to have been the remains of infilled iron minepits and associated spoil heaps. These are presumed to be medieval on the basis of evidence obtained during the excavation of similar minepits within the quarry in the 1980s (Worssam and Swift 1987).

- 2.5 A large number of these pits were exposed during the Phase 2 (Parts 4 to 11) Extraction works, with the northernmost extent of the pits along and above the 140m contour (CA 2007a, 2007b, 2010, 2012, 2013, 2014, 2015 and 2016; Figure 3). A northwest/ south-east aligned ditch which was tentatively dated to the medieval period due to the similarity in its fill to that of the medieval mine pits, was identified within the north-western part of the Phase 2 (Part 10) extraction area. Beyond the wood, the foundations of a timber building were present, along with several pits (CA 2007a). These features were associated with a small amount of medieval pottery and had been backfilled with iron-processing waste likely to have derived from iron furnaces. At least one iron-smelting furnace pit, apparently partially protected by a shelter or windbreak, was exposed within the Phase 2 (Part 5) Extraction area (CA 2007b). Other slag-filled pits and postholes were present close to the furnace pit. A single hearth pit was revealed during Phase 2 (Part 6) Extraction groundworks (CA 2010) and two further possible hearth pits were identified during Phase 2 (Part 7) Extraction groundworks (CA 2012) all containing charcoal rich fills. It remains to be seen if these features represent an outlier of iron ore processing activity associated with the timber building or to as yet unexposed activity to the east.

Post-medieval

- 2.6 The evaluation and survey identified substantial post-medieval clay extraction (marl pits and associated trackways and drainage channels within Mare Pit Wood. These as well as additional marl pits, were exposed during the Phase 2 (Parts 1, 4, 8, 9 and 10) Extraction (CA 2004a, CA 2007a, 2013, 2014, 2015, and 2016; Figure 3).
- 2.7 During Phase 2 (Part 6) Extraction groundworks (CA 2010) a north-east/south-west aligned ditch thought to be a post-medieval/modern field boundary was revealed which extended into the Phase 2 (Part 7) Extraction area and, along with a shallow parallel ditch only observed within the Phase 2 (Part 7) Extraction area, formed a north-east/south-west aligned trackway thought to have been used in the transportation of extracted clay away from the marl pits (CA 2012). Additional

partially extant ditches were also revealed within the Phase 2 (Parts 8 and 9) Extraction areas, again, most likely relating to post-medieval/modern field boundaries (CA 2013 and 2014).

2.8 A pit containing charcoal and iron smelting slag was also identified during the Phase 2 (Part 1) Extraction. Although the pit remained undated, the slag was dated on typological grounds to the early post-medieval period (CA 2004a).

2.9 A dumping deposit along the edge of the marl pit to the south was observed. The deposit appeared to be extending eastward beyond the limit of excavation for Phase 2 (Part 6) (CA 2010; Fig. 3).

3. AIMS AND OBJECTIVES

3.1 The objectives of the archaeological works were:

- to monitor groundworks, and to identify, investigate and record all significant buried archaeological deposits revealed on the site during the course of the development groundworks;
- at the conclusion of the project, to produce an integrated archive for the project work and a report setting out the results of the project and the archaeological conclusions that can be drawn from the recorded data.

4. METHODOLOGY

4.1 The 2017 fieldwork followed the methodology set out within the WSI and subsequent amendments (CA 2003 and 2006). An archaeologist was present during intrusive groundworks in Area 1 in which the extraction face and an area of ground at its base were cleaned back to investigate the depth of mine pits identified in Phases 2(11). Due to the height of the extraction face in Area 1, health and safety considerations prevented access to the features identified within it and it was only possible to record those parts of the features which could be safely observed from ground level. All groundworks were carried out using a mechanical excavator equipped with a tooth bucket.

4.2 Where archaeological deposits were encountered written, graphic and photographic records were compiled in accordance with CA Technical Manual 1: *Fieldwork Recording Manual*.

4.3 The archive and artefacts from the evaluation are currently held by CA at their offices in Andover and will be deposited with East Grinstead Museum. A summary of information from this project set out within Appendix B will be entered onto the OASIS online database of archaeological projects in Britain.

5. RESULTS (FIGURES 2-4)

5.1 No new features or deposits of archaeological interest were observed during groundworks, and no artefactual material pre-dating the modern period was recovered.

6. DISCUSSION

6.1 Despite the archaeological potential of the application area (see archaeological background above), the watching brief identified no new archaeological remains within the area of observed groundworks.

6.2 The infilled mine pits identified and investigated during the current phase of groundworks show a continuation of the extraction activity recorded along and above the 140m contour line throughout the Phase 2 Extraction areas.

6.2 The results of the fieldwork suggest that the infilled mine pits are likely to represent a mixture of both clay extraction and the probable medieval iron ore extraction activity identified in previous phases of archaeological recording.

7. CA PROJECT TEAM

Fieldwork was undertaken by Steve Bush, and Tony Brown. The report was written by Ray Kennedy. The illustrations were prepared by Charlotte Pattman. The archive has been compiled by Zoe Emery, and prepared for deposition by Hazel O'Neill. The project was managed for CA by Ray Kennedy

8. REFERENCES

- BGS (British Geological Survey), Geology of Britain Viewer, Online resource <http://maps.bgs.ac.uk/geologyviewergoogle/googleviewer.html> (accessed 25 October 2017)
- CAT (Cotswold Archaeological Trust) 1999a West Hoathly Brickworks, Sharpthorne, West Sussex, Phase 1; Cookham's Lane: Archaeological Recording CAT typescript report no. 991046
- CAT (Cotswold Archaeological Trust) 1999b West Hoathly Brickworks, Sharpthorne, West Sussex, Phase 1; Extraction Area (Excluding Cookham's Lane): Archaeological Evaluation CAT typescript report no. 991063
- CAT (Cotswold Archaeological Trust) 2000 West Hoathly Brickworks, Sharpthorne, West Sussex (Mare Pit Wood): Archaeological Earthwork Survey and Evaluation CAT typescript report no. 001159
- CAT (Cotswold Archaeological Trust) 2001a West Hoathly Brickworks, Sharpthorne, West Sussex, Mare Pit Wood; South-East: Archaeological Earthwork Survey CAT typescript report no. 01127
- CAT (Cotswold Archaeological Trust) 2001b West Hoathly Brickworks, Sharpthorne, West Sussex, Phase 1 Extraction Area: Archaeological Watching Brief CAT typescript report no. 01110
- CA (Cotswold Archaeology) 2003 West Hoathly Brickworks, Sharpthorne, West Sussex: Written Scheme of Investigation for a Programme of Archaeological Recording
- CA (Cotswold Archaeology) 2004a West Hoathly Brickworks, Sharpthorne, West Sussex: Programme of Archaeological Recording for Phase 2 Extraction (Part 1). CA typescript report no. 03176
- CA (Cotswold Archaeology) 2004b West Hoathly Brickworks, Sharpthorne, West Sussex: Programme of Archaeological Recording for Phase 2 Extraction (Part 2). CA typescript report no. 04152

- CA (Cotswold Archaeology) 2006 West Hoathly Brickworks, Sharpthorne, West Sussex: Programme of Archaeological Recording for Phase 2 Extraction (Part 3). CA typescript report no. 05192
- CA (Cotswold Archaeology) 2007a West Hoathly Brickworks, Sharpthorne, West Sussex: Programme of Archaeological Recording for Phase 2 (Part 4) Extraction. CA typescript report no. 06119
- CA (Cotswold Archaeology) 2007b West Hoathly Brickworks, Sharpthorne, West Sussex: Programme of Archaeological Recording for Phase 2 (Part 5). Extraction. CA typescript report no. 07067
- CA (Cotswold Archaeology) 2010 West Hoathly Brickworks, Sharpthorne, West Sussex: Programme of Archaeological Recording for Phase 2 (Part 6) Extraction. CA typescript report no. 10143
- CA (Cotswold Archaeology) 2012 West Hoathly Brickworks, Sharpthorne, West Sussex: Archaeological Watching Brief Phase 2 (Part 7). CA typescript report 12212
- CA (Cotswold Archaeology) 2013 West Hoathly Brickworks, Sharpthorne, West Sussex: Archaeological Watching Brief. CA typescript report 13191
- CA (Cotswold Archaeology) 2014 West Hoathly Brickworks, Sharpthorne, West Sussex: Archaeological Watching Brief. CA typescript report 14110
- CA (Cotswold Archaeology) 2015 West Hoathly Brickworks Phase 2 (Part 10), Sharpthorne, West Sussex: Archaeological Watching Brief. CA typescript report 15687
- CA (Cotswold Archaeology) 2016 West Hoathly Brickworks Phase 2 (11), Sharpthorne, West Sussex: Archaeological Watching Brief. CA typescript report 16463
- Worssam, B. and Swift, G. 1987 'Minepits at West Hoathly Brickworks, Sharpthorne, Sussex', Wealdon Iron 7, 3–15 (Bulletin of the Wealden Iron Research Group)



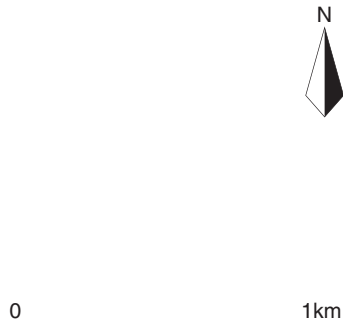
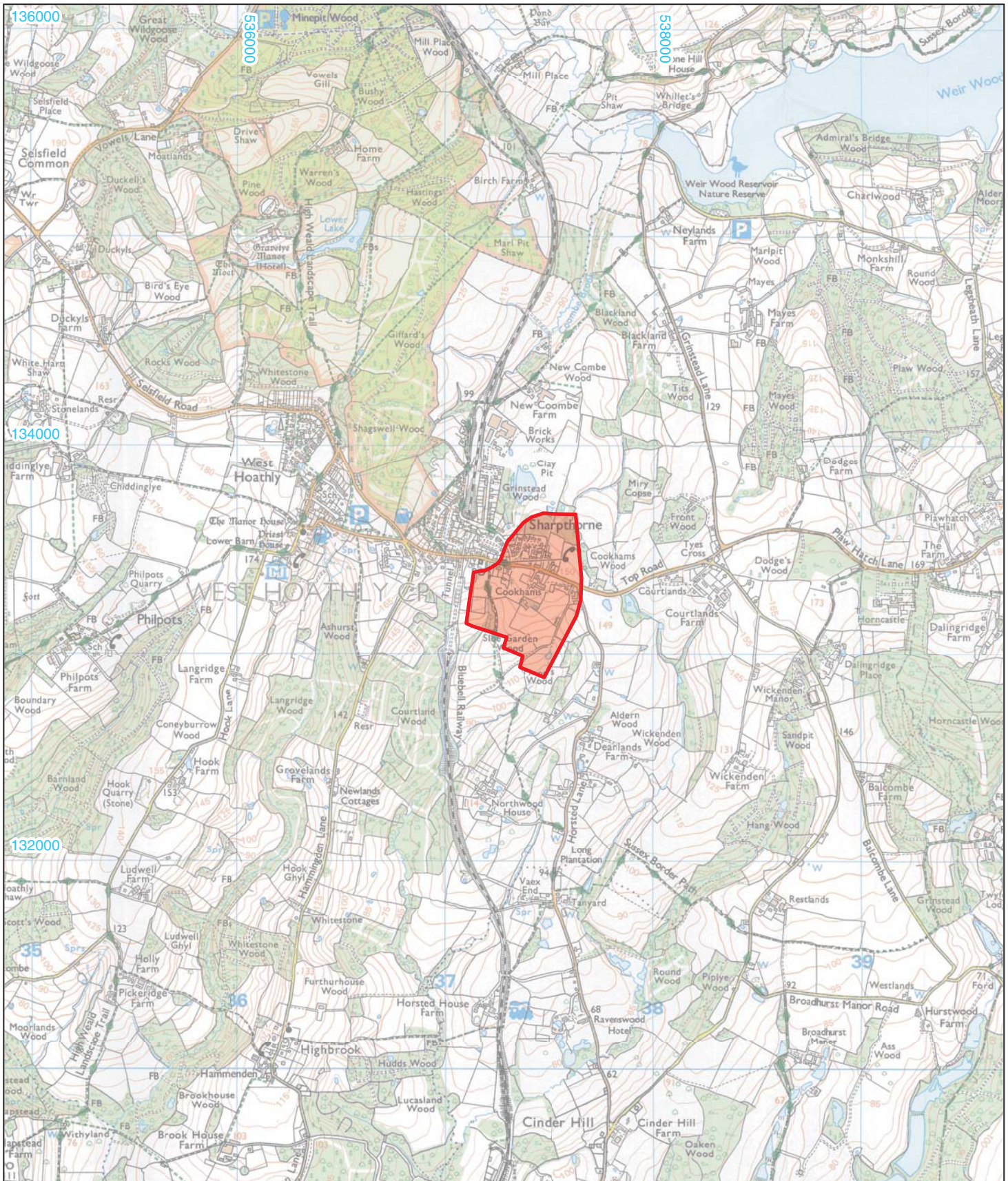


APPENDIX A: CONTEXT DESCRIPTIONS

Trench No.	Context No.	Type	Fill of	Context interpretation	Description	L (m)	W (m)	Depth /thickness (m)	Spot-date
1	100	Layer		topsoil	mid grey brown silty clay	50	1.8	0.25	modern
1	101	Layer		subsoil	light grey brown silty clay	50	1.8	0.15	
1	102	Cut		ditch	U-shaped ditch, east/west orientated	>1.8	0.8	0.76	
1	103	Fill	102	3rd fill of ditch	mid grey sandy clay	>1.8	0.8	0.43	modern
1	104	Fill	102	2nd fill of ditch	light yellow sand	>1.8	0.65	0.05	C16-18
1	105	Fill	102	1st fill of ditch	mid grey sandy clay and brick rubble	>1.8	0.3	0.35	LC16
1	106	Layer		cobbled surface	large river cobbles set in grey silt	>1.8	3.7	0.12	EC18-LC18
1	107	Cut		posthole	square posthole, flat based	0.5	0.5	0.45	

APPENDIX B: OASIS REPORT FORM

PROJECT DETAILS	
Project Name	West Hoathly Brickworks Phase 2 (Part 12), Sharpthorne, West Sussex
Short description	<p>An archaeological watching brief was undertaken by Cotswold Archaeology as part of the latest phase of works associated with the extension of the clay quarry at West Hoathly Brickworks, Sharpthorne, West Sussex. The work formed part of the Phase 2 (Part 12) Extraction and followed on from archaeological work undertaken during the Phase 2 (Parts 1–11) Extraction.</p> <p>An archaeologist was present during the extraction phase on mine pits that had been identified during a previous phase of works. All were similar to those identified previously on the site and are likely to have been the result of medieval iron ore and/or clay extraction.</p>
Project dates	14 th and 25 th of August 2017
Project type	Watching Brief
Previous work	(CA 2004a, 2004b, 2006, 2007a, 2007b, 2010, 2012, 2013, 2014, 2015, 2016).
Future work	Watching Brief
PROJECT LOCATION	
Site Location	West Hoathly Brickworks, Sharpthorne, West Sussex
Study area (M ² /ha)	N/A
Site co-ordinates	537630 132860
PROJECT CREATORS	
Name of organisation	Cotswold Archaeology
Project Brief originator	WSSC
Project Design (WSI) originator	Cotswold Archaeology
Project Manager	Ray Kennedy
Project Supervisor	Tony Brown, Steve Bush
MONUMENT TYPE	
None	
SIGNIFICANT FINDS	
None	
PROJECT ARCHIVES	
Intended final location of archive (museum/Accession no.)	Content (e.g. pottery, animal bone etc)
East Grinstead Museum	
Physical	
Paper	Context sheets, matrices
Digital	Database, digital photos
BIBLIOGRAPHY	
<p>CA (Cotswold Archaeology) 2017 West Hoathly Brickworks Phase 2 (12), Sharpthorne, West Sussex: Archaeological Watching Brief. CA typescript report 17622</p>	



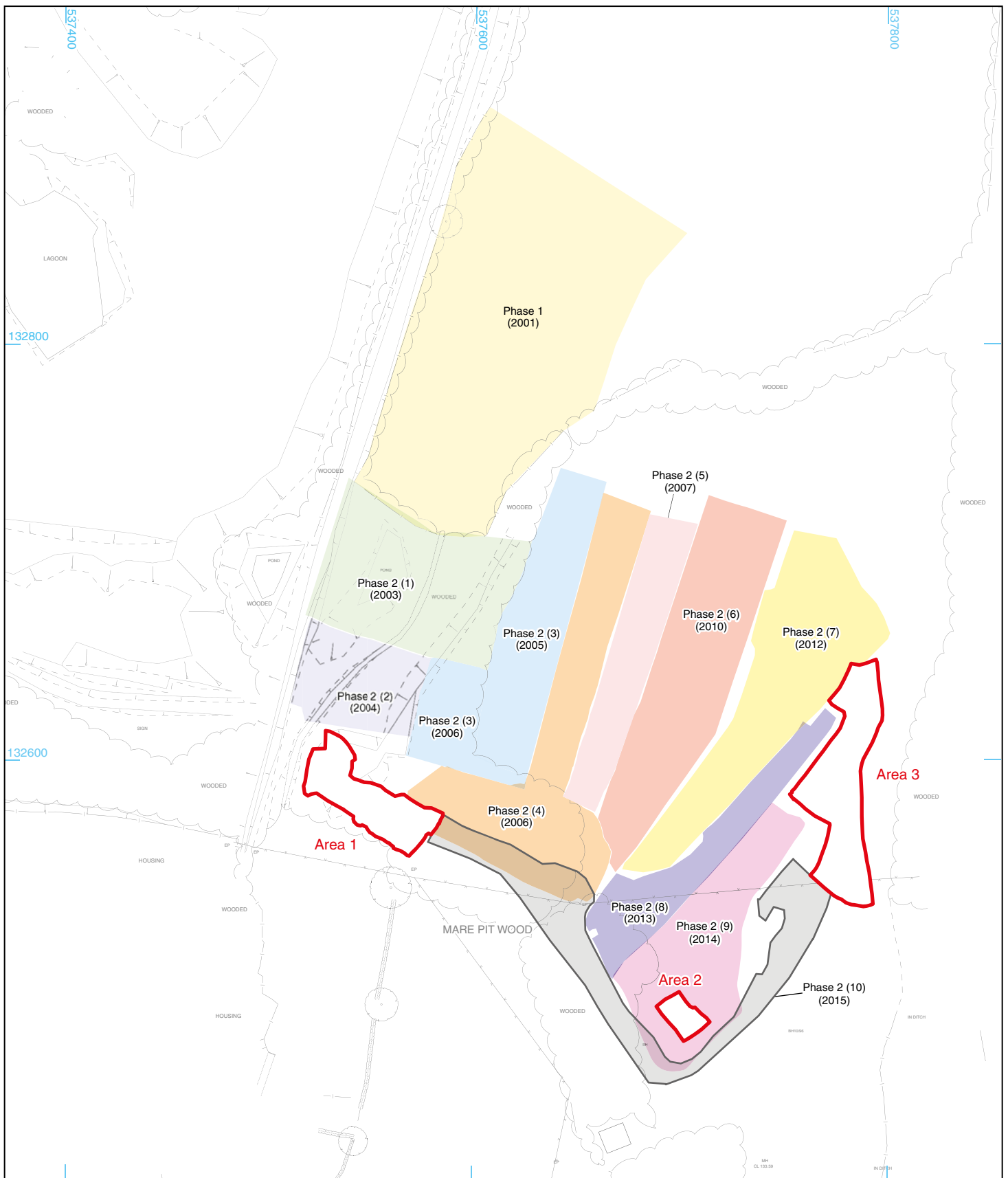
Cotswold Archaeology
 Andover 01264 347630
 Cirencester 01285 771022
 Exeter 01392 826185
 Milton Keynes 01908 564660
www.cotswoldarchaeology.co.uk
enquiries@cotswoldarchaeology.co.uk

PROJECT TITLE
 West Hoathly Brickworks, Phase 2
 (Part 12), Sharpthorne, West Sussex

FIGURE TITLE
 Site location plan

Reproduced from the digital Ordnance Survey Explorer map with the permission of Ordnance Survey on behalf of The Controller of Her Majesty's Stationery Office © Crown copyright
 Cotswold Archaeology Ltd 100002109

DRAWN BY	CP	PROJECT NO.	2151	FIGURE NO.	1
CHECKED BY	AO	DATE	31/10/2017		
APPROVED BY	RK	SCALE	@A4 1:25,000		



 site boundary



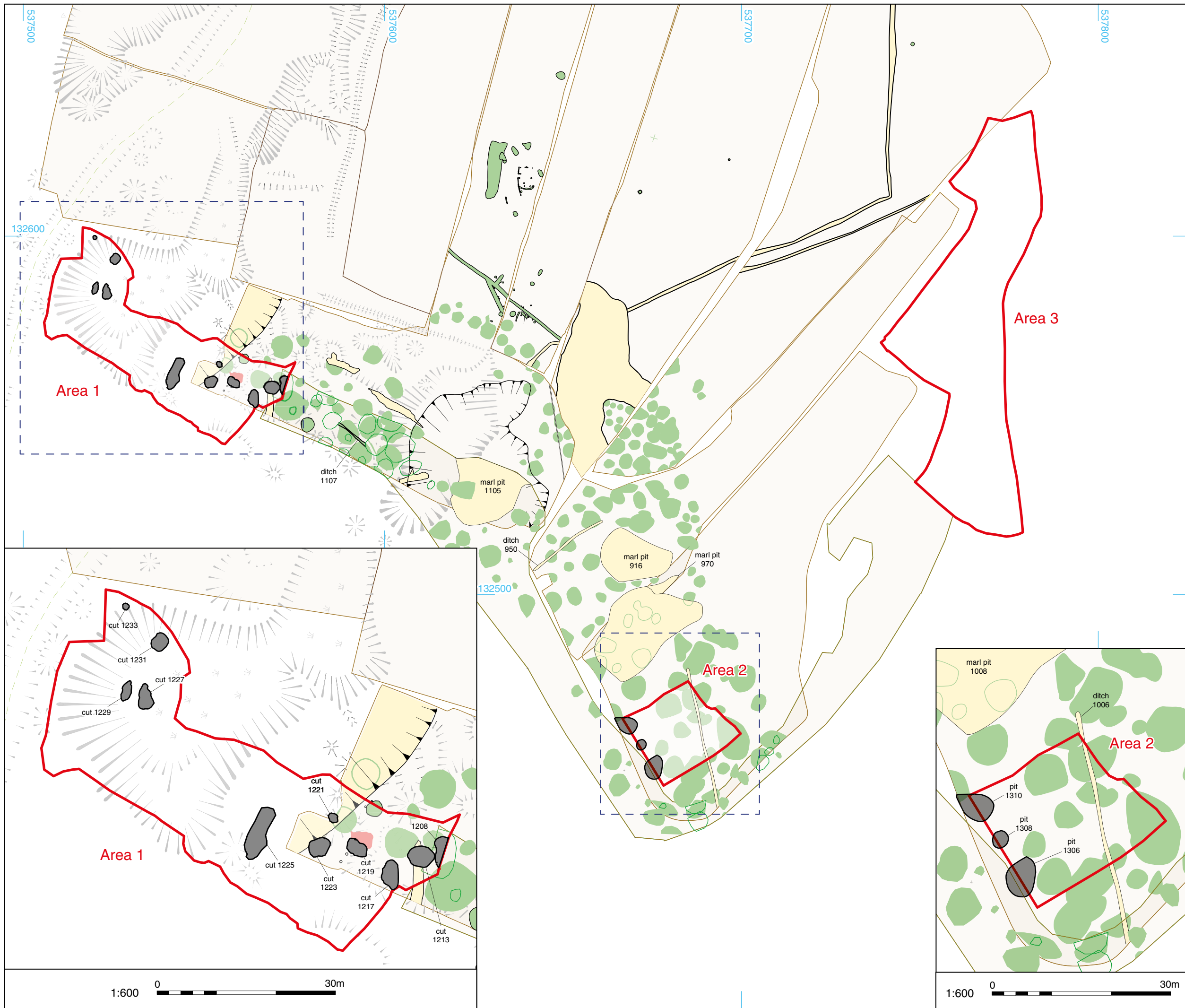
Andover 01264 347630
 Cirencester 01285 771022
 Exeter 01392 826185
 Milton Keynes 01908 564660
www.cotswoldarchaeology.co.uk
enquiries@cotswoldarchaeology.co.uk

PROJECT TITLE

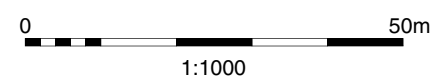
West Hoathly Brickworks, Phase 2
 (Part 12), Sharpthorne, West Sussex

FIGURE TITLE

Location of groundworks



- Phase 2 (12)
- previous phase
- archaeological feature
- tree-throw
- medieval feature
- medieval minepit
- post-medieval
- ✳ earthwork survey (CA 2000; 2001a)



Andover 01264 347630
 Cirencester 01285 771022
 Exeter 01392 826185
 Milton Keynes 01908 564660
www.cotswoldarchaeology.co.uk
enquiries@cotswoldarchaeology.co.uk

PROJECT TITLE
 West Hoathly Brickworks, Phase 2
 (Part 12), Sharpthorne, West Sussex

FIGURE TITLE
 Site plan showing archaeological
 features



<small>DRAWN BY</small> AO/CP	<small>PROJECT NO.</small> 2151	<small>FIGURE NO.</small>
<small>CHECKED BY</small> AO	<small>DATE</small> 31/10/2017	3
<small>APPROVED BY</small> RK	<small>SCALE@A4</small> 1:1,000 & 1:600	



Working shot



Working shot



Working shot

Andover Office

Stanley House
Walworth Road
Andover
Hampshire
SP10 5LH

t: 01264 347630

Cirencester Office

Building 11
Kemble Enterprise Park
Cirencester
Gloucestershire
GL7 6BQ

t: 01285 771022

Exeter Office

Unit 53
Basepoint Business Centre
Yeoford Way
Marsh Barton Trading Estate
Exeter
EX2 8LB

t: 01392 826185

Milton Keynes Office

41 Burners Lane South
Kiln Farm
Milton Keynes
Buckinghamshire
MK11 3HA

t: 01908 564660