

**GAS MAIN REPLACEMENT  
GLOUCESTER  
GLOUCESTERSHIRE**

**ARCHAEOLOGICAL WATCHING BRIEF**

*For*

**MORRISON UTILITY SERVICES**

CA PROJECT: 2838  
CA REPORT: 09112


SEPTEMBER 2009

---

# GAS MAIN REPLACEMENT GLOUCESTER GLOUCESTERSHIRE

## ARCHAEOLOGICAL WATCHING BRIEF

CA PROJECT: 2838  
CA REPORT: 09112

|             |   |
|-------------|---|
| prepared by | Philippa Mitcheson, Project Supervisor  |
| date        | 18 September 2009   |
| checked by  | Richard Young, Project Manager  |
| date        | 21 September 2009   |
| approved by | Simon Cox, Head of Fieldwork  |
| signed      |  |
| date        | 23 September 2009   |
| issue       | 01  |

*This report is confidential to the client. Cotswold Archaeology accepts no responsibility or liability to any third party to whom this report, or any part of it, is made known. Any such party relies upon this report entirely at their own risk. No part of this report may be reproduced by any means without permission.*

## CONTENTS

|  |    |
|--|----|
| SUMMARY .....                          | 4  |
| 1. INTRODUCTION .....                  | 5  |
| 2. RESULTS .....                       | 7  |
| 3. DISCUSSION.....                     | 7  |
| 4. CA PROJECT TEAM .....               | 7  |
| 5. REFERENCES .....                    | 7  |
| APPENDIX A: CONTEXT DESCRIPTIONS ..... | 9  |
| APPENDIX B: OASIS REPORT FORM.....     | 15 |

## LIST OF ILLUSTRATIONS

Fig. 1 Site location plan (1:25,000)

Fig. 2 Trench location plan (1:1000)

## SUMMARY

**Project Name:** Gas Main Replacement  
**Location:** Gloucester, Gloucestershire  
**NGR:** SO 8292 1838  
**Type:** Watching Brief  
**Date:** 27 March - 5 May 2009  
**Location of Archive:** To be deposited with Gloucester City Museum  
**Site Code:** GGM 09

An archaeological watching brief was undertaken by Cotswold Archaeology during groundworks associated the replacement of a gas main along Ladybellegate Street, Commercial Road and Kimbrose in Gloucester, Gloucestershire.

The *in situ* foundations of numbers 13 and 15 Ladybellegate Street were observed in two access pits. No undisturbed deposits or features were observed during the remaining groundworks as the works were restricted to the line of the existing service trench.

## 1. INTRODUCTION

- 1.1 Between March and May 2009 Cotswold Archaeology (CA) carried out an archaeological watching brief for Morrison Utility Services along Ladybellegate Street, Commercial Road and Kimbrose in Gloucester, Gloucestershire (centred on NGR: SO 8292 1838; Fig. 1). The watching brief was undertaken at the request of the Historic Environment Team, Gloucester City Council (GCC) and English Heritage (EH) during the 'permitted development' of a gas main replacement.
- 1.2 The watching brief was carried out in accordance with a detailed Written Scheme of Investigation (WSI) produced by CA (2009) and approved by Mr Jonathan Smith, Historic Environment Manager, GCC. The fieldwork also followed the *Standard and Guidance for an Archaeological Watching Brief* issued by the IfA (2008), the *Statement of Standards and Practices Appropriate for Archaeological Fieldwork in Gloucestershire* issued by Gloucestershire County Council Archaeology Section (1995) and the *Management of Research Projects in the Historic Environment (MORPHE)* (EH 2006). The works were monitored by Mr Phil Greateorex, Historic Environment Record Officer, GCC, including a site visit on 20 April 2009.

### ***The site***

- 1.3 The site covers an area of 2ha and comprises the line of an existing gas main in the western part of Gloucester. Archaeological interest in the site arises from its location within the south-western corner of the Roman Colonia of *Glevum* and also its proximity to the medieval monastic house of Blackfriars (Fig. 2).
- 1.4 The underlying solid geology of the area is mapped as Lower Lias clays of the Lower Jurassic era with overlying alluvial drift (BGS 1975). The undisturbed substrate was not reached during groundworks.

### ***Archaeological Background***

- 1.5 Known archaeological sites within this part of Gloucester include a number of Scheduled Ancient Monuments (SAMs). These include a portion of *Glevum* Roman Colonia (SAM no. GC 330) at the former Gloscat Brunswick Road campus, comprising a small portion of the stone wall of the Roman Colonia and a number of inhumations and pottery kilns. An archaeological evaluation conducted on the site by CA in 2006 identified deposits associated with the defensive circuit of the Roman,

medieval and post-medieval town, including *in situ* rampart deposits and the surrounding defensive ditch. Evidence of Roman occupation within the town, including *in situ* tessellated floors was also recorded. Roman activity outside the town was represented by a number of ditches and pits.

- 1.6 The route of the existing pipe lies adjacent to, and indeed crosses, the suggested alignment of the Roman town wall. Hurst's excavations in Ladybellegate Street in 1972 located, at the junction of Ladybellegate Street and Commercial Road, a ditch backfilled with clays and silt which was interpreted as a Roman rampart or a robbed out section of the wall. Recent excavations by the Gloucester County Unit at Kimbrose along the suggested alignment of the wall did not encounter it, which suggests that it may also have been robbed out here ([thisisgloucestershire.co.uk](http://thisisgloucestershire.co.uk) 2009)
- 1.7 An archaeological excavation by CA in 2001 (Holbrook and Bateman 2008) at nearby Parliament Street, which lies outside the South Gate of the Roman town identified part of a cemetery that is presumed to be associated with antiquarian records of stone cists and cremations of possible Roman date found during construction of parts of the Dock basin (Lysons 1860, 68).
- 1.8 Blackfriars (SAM no. GC 116) was founded c. 1239 as a Dominican friary. After its dissolution in 1539 it was purchased by Thomas Bell and remodelled as domestic property. Although undoubtedly modified throughout the post-medieval period, the principal periods of alterations were in the third quarter of the 19th century and again in the mid 20th century during construction of the Mineral Water Works and Westgate Motor House respectively. An extensive historical appraisal has previously been undertaken for the site (Root 1994) and Rodwell (2009) summarises the archaeological and historical background in her report.

### ***Methodology***

- 1.9 The fieldwork followed the methodology set out within the WSI (CA 2009). An archaeologist was present during intrusive groundworks comprising the excavation of trenches and access pits along the route of the existing gas main to replace the pipe (Fig. 2).
- 1.10 Written, graphic and photographic records were compiled in accordance with CA Technical Manual 1: *Fieldwork Recording Manual* (2007).

- 1.11 The archive from the evaluation is currently held by CA at their offices in Kemble and will be deposited with Gloucester City Museum. A summary of information from this project, set out within Appendix B, will be entered onto the OASIS online database of archaeological projects in Britain.

## **2. RESULTS**

- 2.1 The *in situ* limestone foundations of numbers 13 and 15 Ladybellegate Street were observed in trenches 13 and 14 respectively. No archaeological features or deposits were observed during the remaining groundworks. A broadly similar stratigraphy was observed in all trenches comprising the gravel and sand backfill of the existing service trench sealed by a layer of hardcore make-up and the tarmac road surface or pavement surface. Undisturbed natural substrate was not encountered in any of the trenches and no artefacts were recovered.

## **3. DISCUSSION**

- 3.1 With the exception of the foundations of numbers 13 and 15 Ladybellegate Street no archaeological deposits or features were observed during groundworks. This is due to the fact that groundworks were entirely restricted to the existing service trench and as a result no undisturbed deposits were encountered.

## **4. CA PROJECT TEAM**

Fieldwork was undertaken by Sian Reynish and Philippa Mitcheson. The report was written by Philippa Mitcheson who also compiled the archive which was prepared for deposition by Victoria Taylor. The illustrations were prepared by Rachel Kershaw and the project was managed for CA by Richard Young.

## **5. REFERENCES**

BGS (British Geological Survey) 1975 *Geological survey of Great Britain, Solid and Drift Edition, Gloucester, Sheet 234 Scale 1:50,000*

Cotswold Archaeology (CA) 2006 *Gloscat, Gloucester: Archaeological Evaluation*, CA Typescript Report No. **06022**

Holbrook, N. and Bateman, C. 2008 'The South Gate Cemetery of Roman Gloucester: excavations at Parliament Street, 2001', *Trans. Bristol Gloucestershire Archaeol. Soc.* **126**, 91-106.

Hurst, H. 1984 'Gloucester Castle', *Trans. Bristol Gloucestershire Archaeol. Soc.* **102** 73-128

Lysons, S., 1860. *Romans in Gloucestershire* (London).

Rodwell, K. A. 2009 *The Blackfriars, Gloucester: An archaeological appraisal of proposals for structural alterations*.

Root, J. 2004 *Blackfriars, Gloucester: Draft Historical Appraisal* Unpublished typescript report on behalf of SWRDA

thisisgloucestershire.co.uk 2009 'Roman wall escapes Archaeologists' trowels', <http://www.thisisgloucestershire.co.uk/forest/sport/Roman-wall-escapes-archaeologists-trowels/article-844739-detail/article.html> (accessed 23 July 2009)



**APPENDIX A: CONTEXT DESCRIPTIONS**

Trench measurements shown as length x width x depth

**Trench 1: 4.6m x 0.8m x 0.96m**

| No.  | Type    | Description  | Length (m) | Width (m) | Depth (m) |
|------|---------|--|------------|-----------|-----------|
| 1000 | Deposit | Road surface: tarmac   |            |           | 0.1       |
| 1001 | Deposit | Road make-up: loose tarmac                                       |            |           | 0.1       |
| 1002 | Fill    | Backfill of 1004: red gravel                                     |            |           | 0.57      |
| 1003 | Fill    | Backfill of 1004: yellow sand                                    |            |           | 0.19      |
| 1004 | Cut     | Construction cut for existing gas pipe                           |            |           | 0.76      |
| 1005 | Deposit | Modern make-up: Large pieces of reinforced concrete              |            |           | 0.76      |
| 1006 | Deposit | Modern make-up: brown grey sandy silt containing brick fragments |            |           | >0.2      |

**Trench 2: 1.4m x 1.22m x 0.9m**

| No.  | Type    | Description  | Length (m) | Width (m) | Depth (m) |
|------|---------|--|------------|-----------|-----------|
| 2000 | Deposit | Road surface: tarmac   |            |           | 0.1       |
| 2001 | Deposit | Road make-up: loose tarmac                                       |            |           | 0.25      |
| 2002 | Cut     | Construction cut for existing gas pipe                           |            |           | 0.55      |
| 2003 | Fill    | Backfill of 2002: yellow sand                                    |            |           | 0.55      |
| 2004 | Deposit | Modern make-up: brown grey sandy silt containing brick fragments |            |           | >0.55     |

**Trench 3: 1.26m x 1.7m x 0.9m**

| No.  | Type    | Description  | Length (m) | Width (m) | Depth (m) |
|------|---------|--|------------|-----------|-----------|
| 3000 | Deposit | Road surface: tarmac   |            |           | 0.1       |
| 3001 | Deposit | Road make-up: loose tarmac                                       |            |           | 0.25      |
| 3002 | Deposit | Modern make-up: brown grey sandy silt containing brick fragments |            |           | >0.55     |
| 3003 | Cut     | Construction cut for existing gas pipe                           |            |           | 0.82      |
| 3004 | Fill    | Backfill of 3003: yellow sand                                    |            |           | 0.25      |
| 3005 | Fill    | Backfill of 3003: concrete rubble                                |            |           | 0.57      |
| 3006 | Fill    | Fill of 3003: existing gas pipe                                  |            |           |           |

**Trench 4: 1.26m x 1m x 0.95m**

| No.  | Type    | Description  | Length (m) | Width (m) | Depth (m) |
|------|---------|--|------------|-----------|-----------|
| 4000 | Deposit | Road surface: tarmac   |            |           | 0.1       |
| 4001 | Deposit | Road make-up: loose tarmac                                       |            |           | 0.25      |
| 4002 | Deposit | Modern make-up: brown grey sandy silt containing brick fragments |            |           | >0.55     |
| 4003 | Cut     | Construction cut for existing gas pipe                           |            |           | >0.85     |
| 4004 | Fill    | Backfill of 4003: red gravel                                     |            |           | >0.85     |
| 4005 | Fill    | Backfill of 4003: yellow sand                                    |            |           | 0.29      |
| 4006 | Fill    | Backfill of 4003: concrete rubble                                |            |           | 0.56      |
| 4007 | Fill    | Fill of 4003: existing gas pipe                                  |            |           |           |

**Trench 5:** 3.76m x 0.46m x 1.1m

| No.  | Type    | Description  | Length (m) | Width (m) | Depth (m) |
|------|---------|--|------------|-----------|-----------|
| 5000 | Deposit | Road surface: tarmac   |            |           | 0.1       |
| 5001 | Deposit | Road make-up: loose tarmac                                       |            |           | 0.26      |
| 5002 | Deposit | Modern make-up: brown grey sandy silt containing brick fragments |            |           | >0.74     |

**Trench 6:** 4.9m x 0.86m x 0.93m

| No.  | Type    | Description  | Length (m) | Width (m) | Depth (m) |
|------|---------|--|------------|-----------|-----------|
| 6000 | Deposit | Road surface: tarmac   |            |           | 0.1       |
| 6001 | Deposit | Road make-up: loose tarmac                                       |            |           | 0.26      |
| 6002 | Deposit | Modern make-up: brown grey sandy silt containing brick fragments |            |           | >0.57     |
| 6003 | Cut     | Construction cut for existing gas pipe                           |            |           | 0.57      |
| 6004 | Fill    | Backfill of 6003: yellow sand                                    |            |           | 0.57      |

**Trench 7:** 1.03m x 0.85m x 0.85m

| No.  | Type    | Description  | Length (m) | Width (m) | Depth (m) |
|------|---------|--|------------|-----------|-----------|
| 7000 | Deposit | Road surface: tarmac   |            |           | 0.09      |
| 7001 | Deposit | Road make-up: loose tarmac                                   |            |           | 0.12      |
| 7002 | Deposit | Road make-up: pink gravel                                    |            |           | 0.45      |
| 7003 | Deposit | Probable backfill of existing cut (not visible): yellow sand |            |           | 0.19      |
| 7004 | Deposit | Concrete drainage layer beneath 7005                         |            |           | >0.01     |
| 7005 | Deposit | Existing gas pipe  |            |           | >0.01     |

**Trench 8:** 10m x 0.53m x 0.97m

| No.  | Type    | Description  | Length (m) | Width (m) | Depth (m) |
|------|---------|--|------------|-----------|-----------|
| 8000 | Deposit | Road surface: tarmac   |            |           | 0.09      |
| 8001 | Deposit | Road make-up: loose tarmac                                       |            |           | 0.15      |
| 8002 | Deposit | Road make-up: pink gravel  |            |           | 0.36      |
| 8003 | Deposit | Probable backfill of existing cut (not visible): yellow sand     |            |           | >0.22     |
| 8004 | Deposit | Modern make-up: brown grey sandy silt containing brick fragments |            |           | >0.15     |

**Trench 9:** 4m x 1m x 0.7m

| No.  | Type    | Description  | Length (m) | Width (m) | Depth (m) |
|------|---------|--|------------|-----------|-----------|
| 9000 | Deposit | Road surface: tarmac   |            |           | 0.09      |
| 9001 | Deposit | Road make-up: loose tarmac                                       |            |           | 0.15      |
| 9002 | Deposit | Road make-up: pink gravel  |            |           | 0.26      |
| 9003 | Fill    | Backfill of 9004: yellow sand                                    |            |           | >0.17     |
| 9004 | Cut     | Construction cut for existing gas pipe                           |            |           | >0.17     |
| 9005 | Deposit | Modern make-up: brown grey sandy silt containing brick fragments |            |           | >0.17     |

**Trench 10: 1.7m x 0.97m x 0.63m**

| No.   | Type    | Description  | Length (m) | Width (m) | Depth (m) |
|-------|---------|--|------------|-----------|-----------|
| 10000 | Deposit | Road surface: tarmac   |            |           | 0.09      |
| 10001 | Deposit | Road make-up: loose tarmac                                   |            |           | 0.13      |
| 10002 | Deposit | Road make-up: pink gravel                                    |            |           | 0.2       |
| 10003 | Deposit | Probable backfill of existing cut (not visible): yellow sand |            |           | >0.25     |
| 10004 | Deposit | Manhole protection: concrete surround                        |            |           | >0.63     |

**Trench 11: 1.25m x 1.04m x 0.74m**

| No.   | Type    | Description  | Length (m) | Width (m) | Depth (m) |
|-------|---------|--|------------|-----------|-----------|
| 11000 | Deposit | Road surface: tarmac   |            |           | 0.09      |
| 11001 | Deposit | Road make-up: loose tarmac                                       |            |           | 0.13      |
| 11002 | Deposit | Road make-up: pink gravel  |            |           | 0.22      |
| 11003 | Fill    | Backfill of 11004: yellow sand                                   |            |           | >0.3      |
| 11004 | Cut     | Construction cut for existing gas pipe                           |            |           | >0.3      |
| 11005 | Deposit | Modern make-up: brown grey sandy silt containing brick fragments |            |           | >0.3      |

**Trench 12: 1.5m x 1m x 0.76m**

| No.   | Type    | Description  | Length (m) | Width (m) | Depth (m) |
|-------|---------|--|------------|-----------|-----------|
| 12000 | Deposit | Road surface: tarmac   |            |           | 0.09      |
| 12001 | Deposit | Road make-up: loose tarmac                                   |            |           | 0.14      |
| 12002 | Deposit | Road make-up: pink gravel                                    |            |           | 0.23      |
| 12003 | Deposit | Probable backfill of existing cut (not visible): yellow sand |            |           | >0.3      |

**Trench 13: 0.87m x 0.67m x 0.66m**

| No.   | Type    | Description  | Length (m) | Width (m) | Depth (m) |
|-------|---------|--|------------|-----------|-----------|
| 13000 | Deposit | Surface: stone slabs   |            |           | 0.05      |
| 13001 | Deposit | Bedding for 13000: yellow sand                               |            |           | 0.07      |
| 13002 | Deposit | Backfill against 13003: red gravel                           |            |           | >0.54     |
| 13003 | Str.    | Cellar foundations: uncoursed, roughly hewn limestone blocks |            |           | >0.61     |

**Trench 14: 0.83m x 0.67m x 0.56m**

| No.   | Type    | Description   | Length (m) | Width (m) | Depth (m) |
|-------|---------|---|------------|-----------|-----------|
| 14000 | Deposit | Surface: stone slabs  |            |           | 0.05      |
| 14001 | Deposit | Bedding for 14000: yellow sand  |            |           | 0.07      |
| 14002 | Fill    | Backfill of 14003: red gravel   |            |           | 0.38      |
| 14003 | Cut     | Construction cut for existing gas pipe  |            |           | 0.38      |
| 14004 | Deposit | Former garden soil: brown grey sandy silt with charcoal flecks and rare red brick fragments |            |           | >0.44     |
| 14005 | Deposit | Cellar foundations: uncoursed, roughly hewn limestone blocks                                |            |           | >0.44     |

**Trench 15: 1.59m x 0.87m x 0.9m**

| No.   | Type    | Description   | Length (m) | Width (m) | Depth (m) |
|-------|---------|---|------------|-----------|-----------|
| 15000 | Deposit | Surface: stone slabs  |            |           | 0.06      |
| 15001 | Deposit | Bedding for 15000: yellow sand  |            |           | 0.14      |
| 15002 | Deposit | Former garden soil: brown grey sandy silt with charcoal flecks and rare red brick fragments |            |           | >0.7      |

**Trench 16:** 1.49m x 0.68m x 1.39m

| No.   | Type    | Description   | Length (m) | Width (m) | Depth (m) |
|-------|---------|---|------------|-----------|-----------|
| 16000 | Deposit | Surface: stone slabs  |            |           | 0.06      |
| 16001 | Deposit | Bedding for 15000: yellow sand  |            |           | 0.15      |
| 16002 | Deposit | Former garden soil: brown grey sandy silt with charcoal flecks and rare red brick fragments |            |           | >1.18     |

**Trench 17:** 5.15m x 0.7m x 1.79m

| No.   | Type    | Description   | Length (m) | Width (m) | Depth (m) |
|-------|---------|---|------------|-----------|-----------|
| 17000 | Deposit | Surface: stone slabs  |            |           | 0.06      |
| 17001 | Deposit | Bedding for 17000: yellow sand  |            |           | 0.14      |
| 17002 | Deposit | Levelling for 17000: pink gravel  |            |           | 0.17      |
| 17003 | Deposit | Former garden soil: brown grey sandy silt with charcoal flecks and rare red brick fragments |            |           | >1.52     |
| 17004 | Deposit | Possible cellar backfill: brown grey sandy silt containing brick fragments                  |            |           | >1.52     |
| 17005 | Str.    | Cellar wall?: Modern red brick bonded by yellow cement, 24 courses                          |            |           | >1.52     |
| 17006 | Str.    | Arched modern brick culvert   |            |           | >1        |

**Trench 18:** 1.05m x 0.74m x 1.04m

| No.   | Type    | Description  | Length (m) | Width (m) | Depth (m) |
|-------|---------|--|------------|-----------|-----------|
| 18000 | Deposit | Surface: stone slabs   |            |           | 0.06      |
| 18001 | Deposit | Bedding for 16000: yellow sand                                   |            |           | 0.15      |
| 18002 | Deposit | Modern make-up: brown grey sandy silt containing brick fragments |            |           | >0.83     |

**Trench 19:** 1.14m x 0.6m x 1.25m

| No.   | Type    | Description  | Length (m) | Width (m) | Depth (m) |
|-------|---------|--|------------|-----------|-----------|
| 19000 | Deposit | Surface: red bricks  |            |           | 0.06      |
| 19001 | Deposit | Bedding for 19000: yellow sand                                   |            |           | 0.1       |
| 19002 | Deposit | Modern make-up: brown grey sandy silt containing brick fragments |            |           | >1.18     |

**Trench 20:** 10m x 0.6m x 0.96m

| No.   | Type    | Description  | Length (m) | Width (m) | Depth (m) |
|-------|---------|--|------------|-----------|-----------|
| 20000 | Deposit | Surface: red bricks  |            |           | 0.06      |
| 20001 | Deposit | Bedding for 20000: yellow sand   |            |           | 0.1       |
| 20002 | Deposit | Levelling for 20000: pink gravel   |            |           | 0.22      |
| 20003 | Deposit | Modern make-up: brown grey sandy silt containing brick fragments                   |            |           | >0.58     |
| 20004 | Cut     | Construction cut for existing gas pipe   |            |           | >0.58     |
| 20005 | Fill    | Backfill of 20004: pink gravel and grey sandy silt with common red brick fragments |            |           | >0.58     |

**Trench 21: 15m x 0.6m x 1.3m**

| No.   | Type    | Description  | Length (m) | Width (m) | Depth (m) |
|-------|---------|--|------------|-----------|-----------|
| 21000 | Deposit | Surface: red bricks  |            |           | 0.06      |
| 21001 | Deposit | Bedding for 21000: yellow sand   |            |           | 0.1       |
| 21002 | Deposit | Levelling for 21000: pink gravel   |            |           | 0.22      |
| 21003 | Deposit | Modern make-up: brown grey sandy silt containing brick fragments                   |            |           | >0.28     |
| 21004 | Cut     | Construction cut for existing gas pipe   |            |           | >0.28     |
| 21005 | Fill    | Backfill of 20004: pink gravel and grey sandy silt with common red brick fragments |            |           | >0.28     |

**Trench 22: 27.3m x 0.5m x 1.12m**

| No.   | Type    | Description  | Length (m) | Width (m) | Depth (m) |
|-------|---------|--|------------|-----------|-----------|
| 22000 | Deposit | Road surface: tarmac   |            |           | 0.1       |
| 22001 | Deposit | Road surface levelling layer: compacted hardcore             |            |           | 0.09      |
| 22002 | Deposit | Road surface bedding layer: concrete                         |            |           | 0.12      |
| 22003 | Deposit | Modern make-up: crushed rubble                               |            |           | 0.31      |
| 22004 | Deposit | Probable backfill of existing cut (not visible): yellow sand |            |           | >0.5      |
| 22005 | Str.    | Remains of heavily disturbed red brick culvert               |            |           | >0.5      |
| 22006 | Str.    | Modern concrete butting against 22005                        |            |           | >0.5      |

**Trench 23: 50.8m x 0.5m x 1m**

| No.   | Type    | Description  | Length (m) | Width (m) | Depth (m) |
|-------|---------|--|------------|-----------|-----------|
| 23000 | Deposit | Road surface: tarmac   |            |           | 0.1       |
| 23001 | Deposit | Road surface levelling layer: compacted hardcore             |            |           | 0.09      |
| 23002 | Deposit | Road surface bedding layer: concrete                         |            |           | 0.12      |
| 23003 | Deposit | Probable backfill of existing cut (not visible): yellow sand |            |           | >0.5      |
| 23004 | Deposit | Modern make-up: rubble, red brick and limestone blocks       |            |           | >0.5      |
| 23005 | Deposit | Modern make-up: limestone rubble and silt                    |            |           | >0.7      |

**Trench 24: 22m x 0.7m x 1.23m**

| No.   | Type    | Description  | Length (m) | Width (m) | Depth (m) |
|-------|---------|--|------------|-----------|-----------|
| 24000 | Deposit | Road surface: tarmac   |            |           | 0.1       |
| 24001 | Deposit | Road surface levelling layer: compacted hardcore                   |            |           | 0.12      |
| 24002 | Deposit | Road surface bedding layer: concrete                               |            |           | 0.14      |
| 24003 | Deposit | Modern make-up: brown grey sandy silt containing brick fragments   |            |           | >0.87     |
| 24004 | Cut     | Construction cut for existing gas pipe                             |            |           | 0.73      |
| 24005 | Fill    | Backfill of 24005: yellow sand                                     |            |           | 0.35      |
| 24006 | Fill    | Backfill of 24005: pink gravel                                     |            |           | 0.38      |
| 24007 | Cut     | Construction cut for existing services                             |            |           | >0.57     |
| 24008 | Fill    | Backfill of 24007: pink gravel and blue water pipe                 |            |           | >0.57     |
| 24009 | Str.    | Culvert: red brick bonded with yellow cement. Partially collapsed. |            |           | >0.2      |

**Trench 25:** 1.52m x 1.35m x 1.05m

| No.   | Type    | Description  | Length (m) | Width (m) | Depth (m) |
|-------|---------|--|------------|-----------|-----------|
| 25000 | Deposit | Road surface: tarmac   |            |           | 0.1       |
| 25001 | Deposit | Road surface levelling layer: compacted hardcore                 |            |           | 0.18      |
| 25002 | Fill    | Backfill of 25003: yellow sand                                   |            |           | >0.77     |
| 25003 | Cut     | Construction cut for existing gas pipe                           |            |           | >0.77     |
| 25004 | Cut     | Construction cut for green service                               |            |           | >0.77     |
| 25005 | Fill    | Backfill of 25005: pink gravel                                   |            |           | >0.77     |
| 25006 | Deposit | Modern make-up: brown grey sandy silt containing brick fragments |            |           | >0.77     |

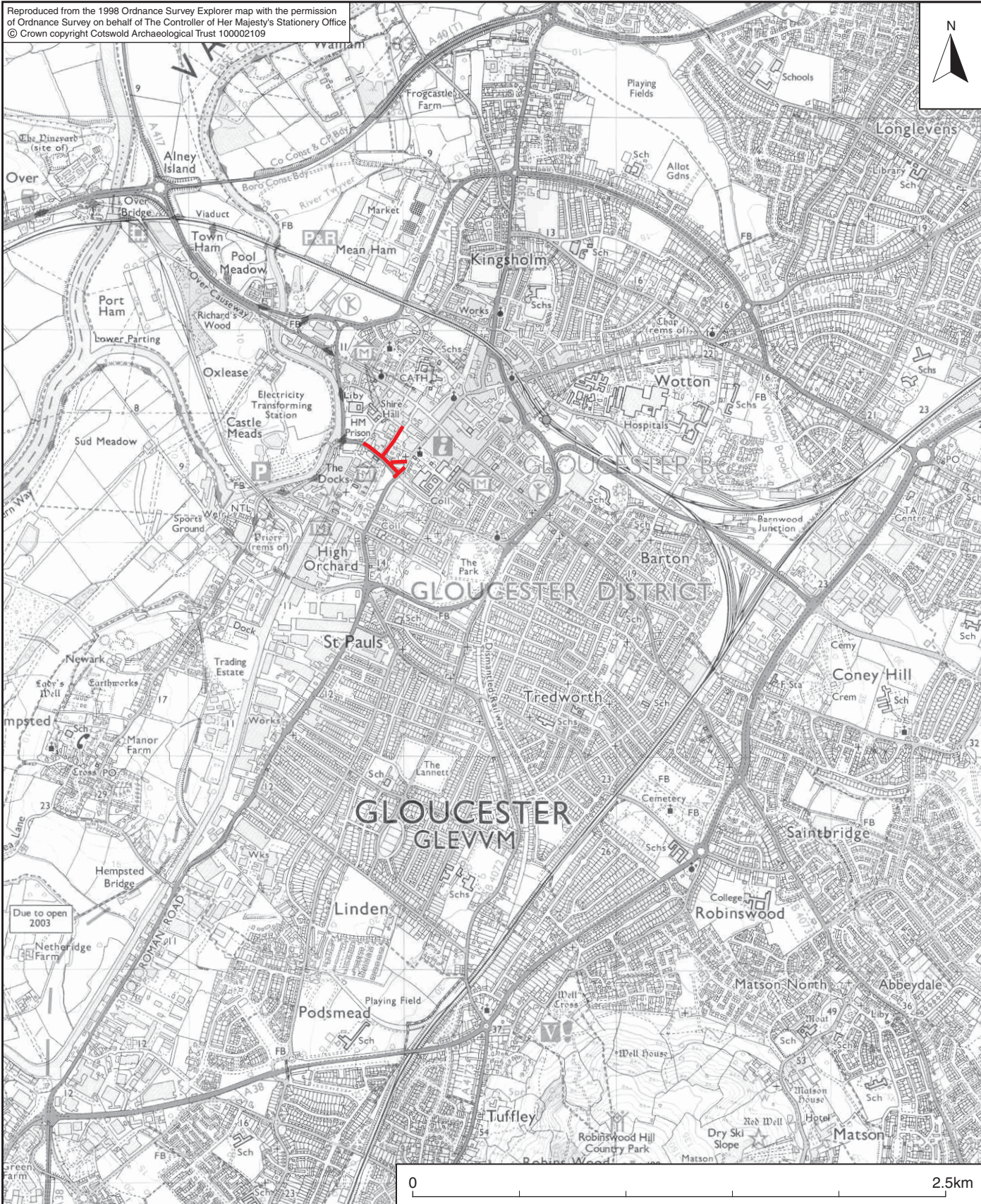
**Trench 26:** 21.4m x 0.5m x 1.05m

| No.   | Type    | Description  | Length (m) | Width (m) | Depth (m) |
|-------|---------|--|------------|-----------|-----------|
| 26000 | Deposit | Road surface: tarmac   |            |           | 0.09      |
| 26001 | Deposit | Road surface levelling layer: compacted hardcore                 |            |           | 0.18      |
| 26002 | Deposit | Probable backfill of construction cut (not visible): yellow sand |            |           | 0.5       |
| 26003 | Deposit | Modern make-up: rubble, red brick and limestone blocks           |            |           | >0.5      |
| 26004 | Deposit | Modern make-up: brown grey sandy silt containing brick fragments |            |           | >0.7      |

**APPENDIX B: OASIS REPORT FORM**

| <b>PROJECT DETAILS</b>   |   |  |
|--|---|--|
| Project Name   | Gas Main Replacement, Gloucester, Gloucestershire   |  |
| Short description  | An archaeological watching brief was undertaken by Cotswold Archaeology during groundworks associated the replacement of a gas main along Ladybellegate Street, Commercial Road and Kimbrose in Gloucester, Gloucestershire. The <i>in situ</i> foundations of numbers 13 and 15 Ladybellegate Street were observed in two access pits. No undisturbed deposits or features were observed during the remaining groundworks as the works were restricted to the line of the existing service trench. |  |
| Project dates  | 27 March-5 May 2009   |  |
| Project type   | Watching Brief  |  |
| Previous work  | None  |  |
| Future work  | Unknown   |  |
| <b>PROJECT LOCATION</b>  |   |  |
| Site Location  | Gloucester, Gloucestershire   |  |
| Study area (M <sup>2</sup> /ha)  | 2ha   |  |
| Site co-ordinates (8 Fig Grid Reference)   | SO 8292 1838  |  |
| <b>PROJECT CREATORS</b>  |   |  |
| Name of organisation   | Cotswold Archaeology  |  |
| Project Brief originator   | Gloucester City Council and English Heritage  |  |
| Project Design (WSI) originator  | Cotswold Archaeology  |  |
| Project Manager  | Richard Young   |  |
| Project Supervisor   | Sian Reynish and Philippa Mitcheson   |  |
| <b>PROJECT ARCHIVES</b>  | Intended final location of archive  | Content  |
| Physical   | N/A   | N/A  |
| Paper  | Gloucester City Museum  | WSI, pro forma registers black and white negatives and colour slides |
| Digital  | Gloucester City Museum  | Digital photographs  |
| <b>BIBLIOGRAPHY</b>  |   |  |
| CA (Cotswold Archaeology) 2009 <i>Gas Main Replacement, Gloucester, Gloucestershire: Archaeological Watching Brief</i> . CA typescript report No. <b>09112</b> |   |  |





— route of pipeline



**COTSWOLD ARCHAEOLOGY**

PROJECT TITLE

**Gas Main Replacement, Gloucester  
Gloucestershire**

FIGURE TITLE

**Site location plan**

DRAWN BY

RK

SCALE

1:25,000@A4

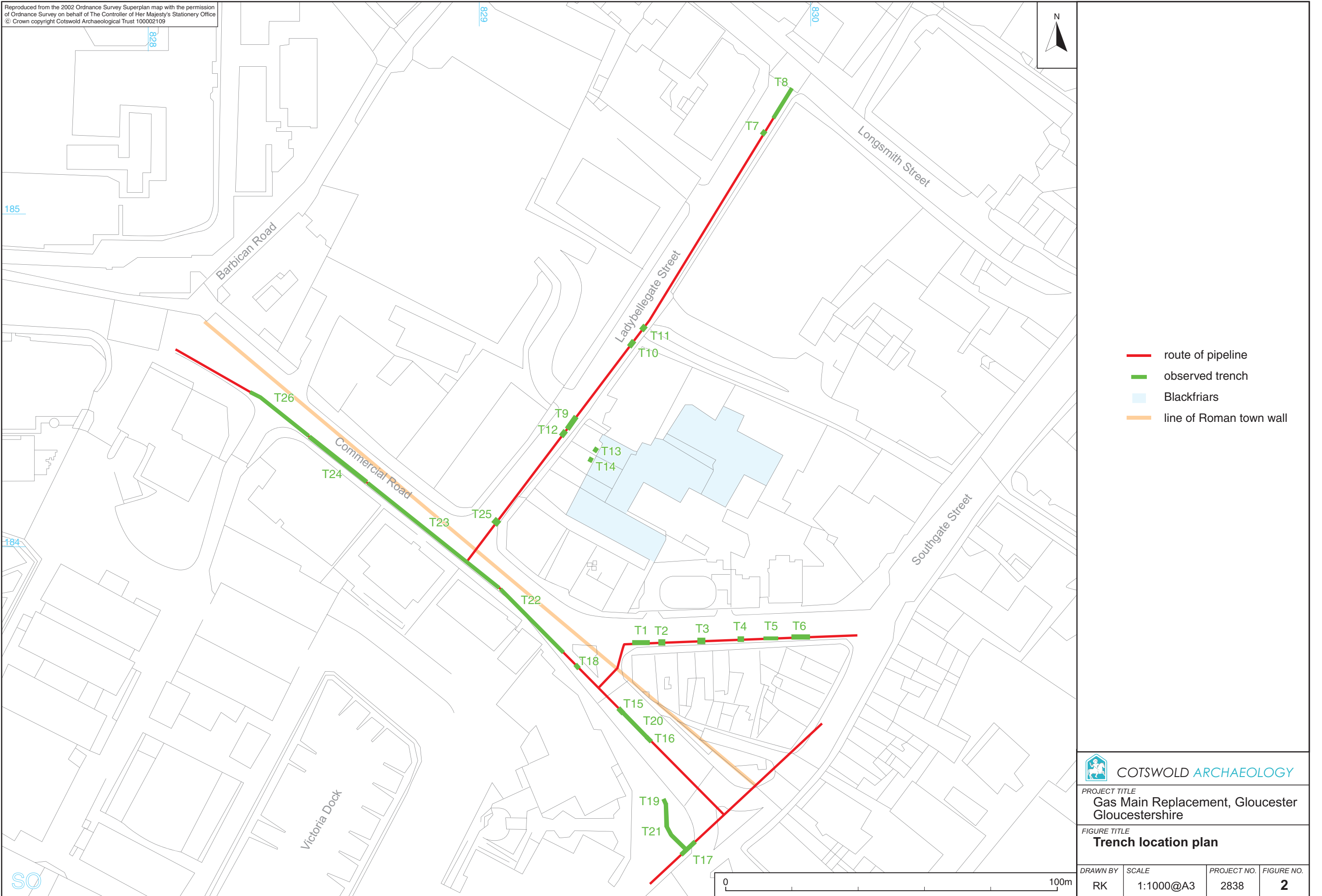
PROJECT NO.


2838

FIGURE NO.

**1**





|  |                    |                     |                 |
|--|--------------------|---------------------|-----------------|
|  COTSWOLD ARCHAEOLOGY |                    |                     |                 |
| PROJECT TITLE<br>Gas Main Replacement, Gloucester<br>Gloucestershire                                       |                    |                     |                 |
| FIGURE TITLE<br>Trench location plan   |                    |                     |                 |
| DRAWN BY<br>RK   | SCALE<br>1:1000@A3 | PROJECT NO.<br>2838 | FIGURE NO.<br>2 |