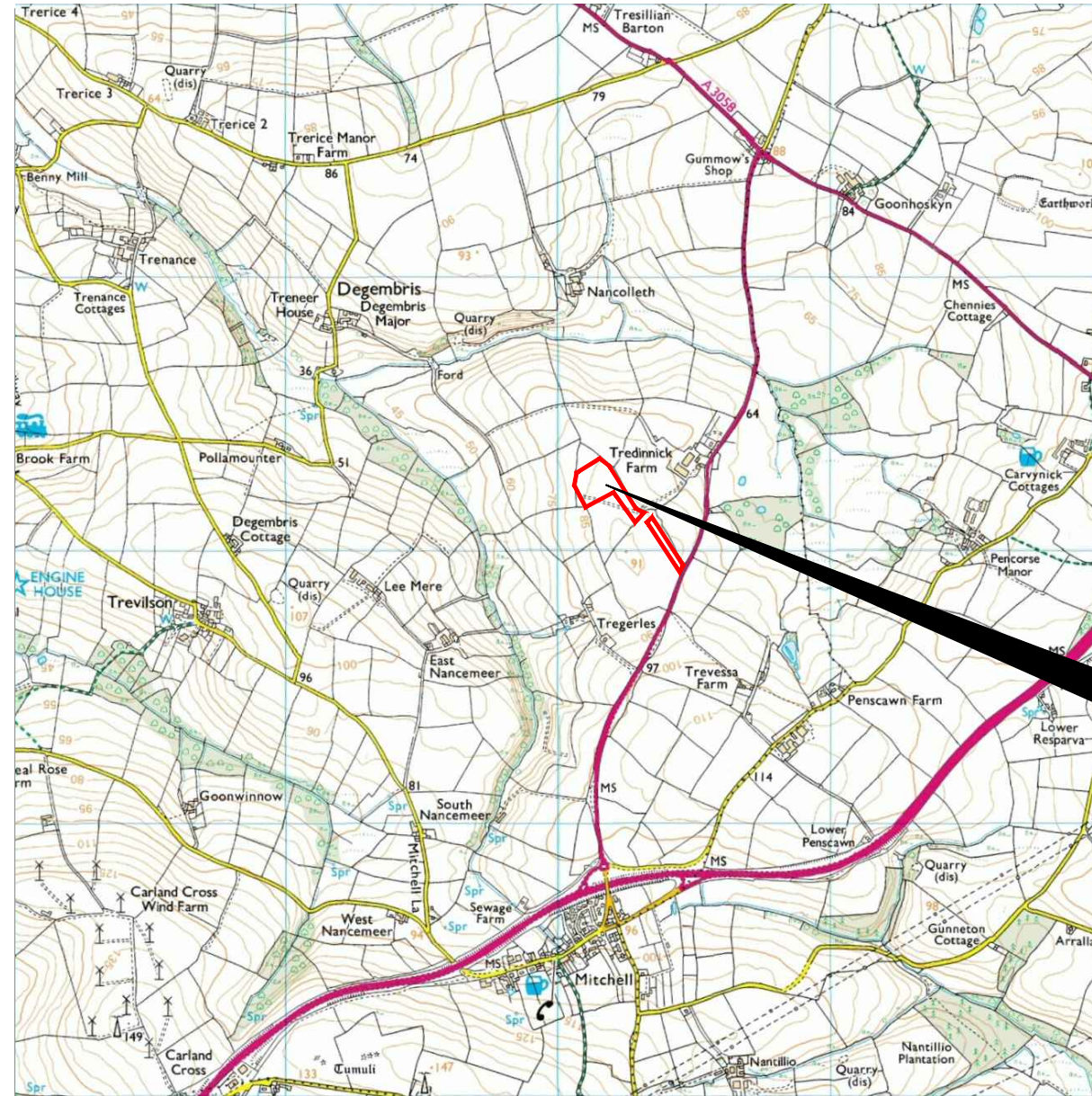


Reproduced from Ordnance Survey's 1:25 000 map of 1998 with the permission of the controller of Her Majesty's Stationery Office. Crown Copyright reserved. Licence No: AL 50125A  
 Licensee:  
 Stratascan Ltd.  
 Vineyard House  
 Upper Hook Road  
 Upton Upon Severn  
 WR8 0SA  
 OS 100km square = SW



58  
 57  
 56  
 55  
 54



84 85 86 87 88

**Amendments**

Issue No.	Date	Description
-	-	-
-	-	-

© Stratascan Ltd - 2013



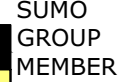
Site centred on NGR SW 862 563

Client  
**SOUTH WEST ARCHAEOLOGY**

Project Title Job No. J6256  
**TREDINNICK FARM, NEWQUAY, CORNWALL**

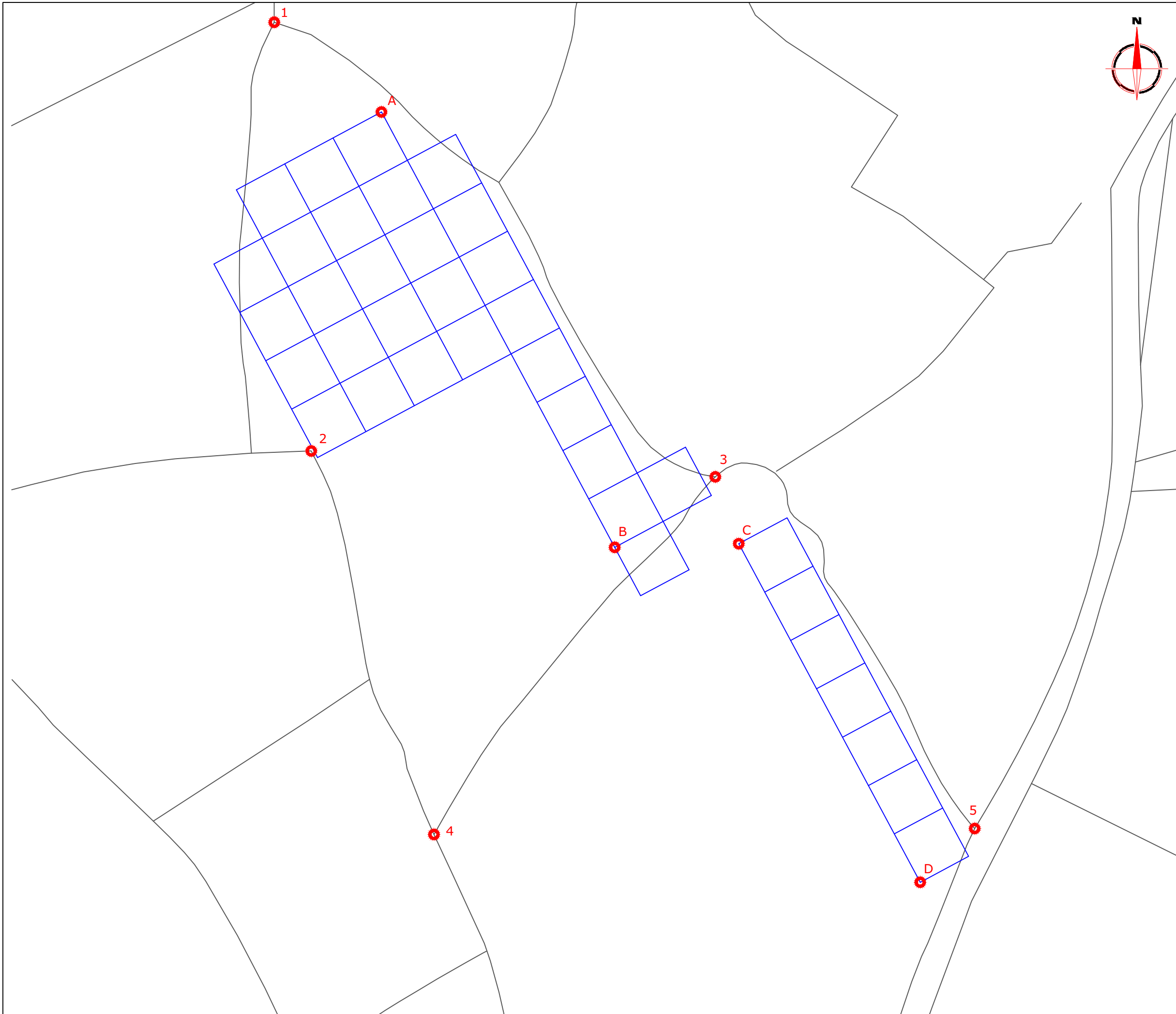
Subject  
**LOCATION PLAN OF SURVEY AREA**

**STRATASCAN™**  
 GEOPHYSICS FOR ARCHAEOLOGY AND ENGINEERING  
 VINEYARD HOUSE T: 01684 592266  
 UPTON UPON SEVERN E: info@stratascan.co.uk  
 WR8 0SA www.stratascan.co.uk



Scale 1:25000 0m 500m 1000m

Plot <b>A3</b>	Checked by <b>DGE</b>	Issue No. <b>01</b>
	Drawn by <b>TR</b>	Figure No. <b>01</b>



**Amendments**

Issue No.	Date	Description
-	-	-
-	-	-

© Stratascan Ltd - 2013

**REFERENCING INFORMATION**

A-B	270m	A-1	76.42m	A-2	189.24m
A-4	396.01m	B-1	342.11m	B-2	174.05m
B-3	67.15m	C-D	210m	C-3	38.72m
C-4	230.28m	C-5	202.20m	D-3	248.33m
D-4	267.10m	D-5	41.81m		

A-B	Base line
1,2,3	Referencing points

Client  
**SOUTH WEST ARCHAEOLOGY**

Project Title  
**TREDINNICK FARM, NEWQUAY, CORNWALL**

Job No. J6256

Subject  
**LOCATION OF SURVEY GRIDS AND REFERENCING**

**STRATASCAN™**  
**GEOPHYSICS FOR ARCHAEOLOGY AND ENGINEERING**  
 VINEYARD HOUSE T: 01684 592266  
 UPTON UPON SEVERN E: info@stratascan.co.uk  
 WR8 0SA www.stratascan.co.uk

**EUROPEAN GPR ASSOCIATION**

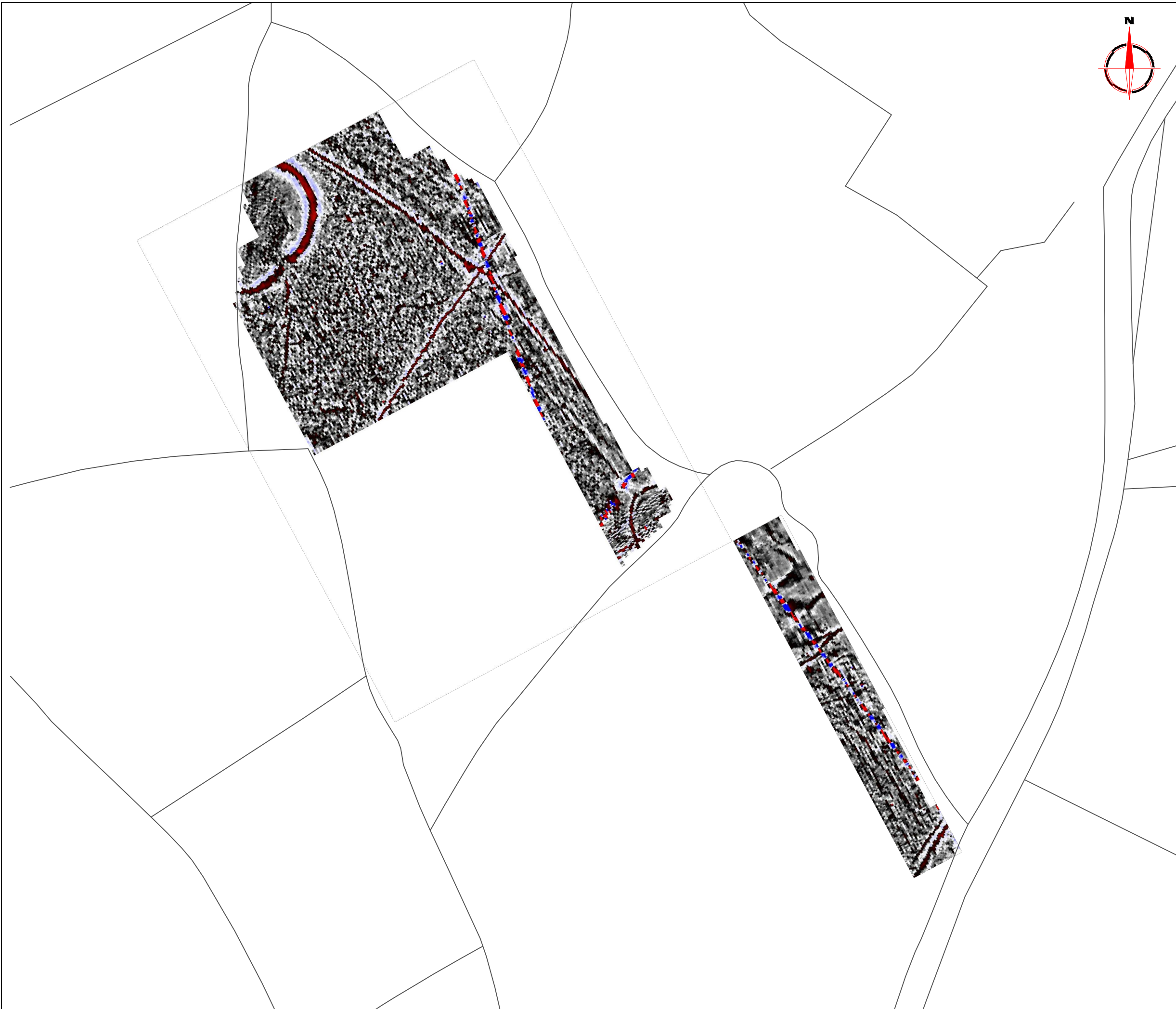
**SUMO GROUP MEMBER**

ims ISO 9001 certified

ims ISO 14001 certified

Scale 1:2000

Plot <b>A3</b>	Checked by <b>DGE</b>	Issue No. <b>01</b>
	Drawn by <b>TR</b>	Figure No. <b>02</b>



**Amendments**

Issue No.	Date	Description
-	-	-
-	-	-

© Stratascan Ltd - 2013

Plotting parameters

Maximum +100nT (red)  
Minimum -100nT (blue)

+100nT  
-10nT  
-10nT  
-100nT

Client  
**SOUTH WEST ARCHAEOLOGY**

Project Title **TREDINNICK FARM, NEWQUAY, CORNWALL** Job No. **J6256**

Subject  
**COLOUR PLOT OF GRADIOMETER DATA SHOWING EXTREME VALUES - OVERVIEW**

**STRATASCAN™**  
GEOPHYSICS FOR ARCHAEOLOGY AND ENGINEERING

VINEYARD HOUSE T: 01684 592266  
UPTON UPON SEVERN E: info@stratascan.co.uk  
WR8 0SA www.stratascan.co.uk

**EUROPEAN GPR ASSOCIATION**

**SUMO GROUP MEMBER**

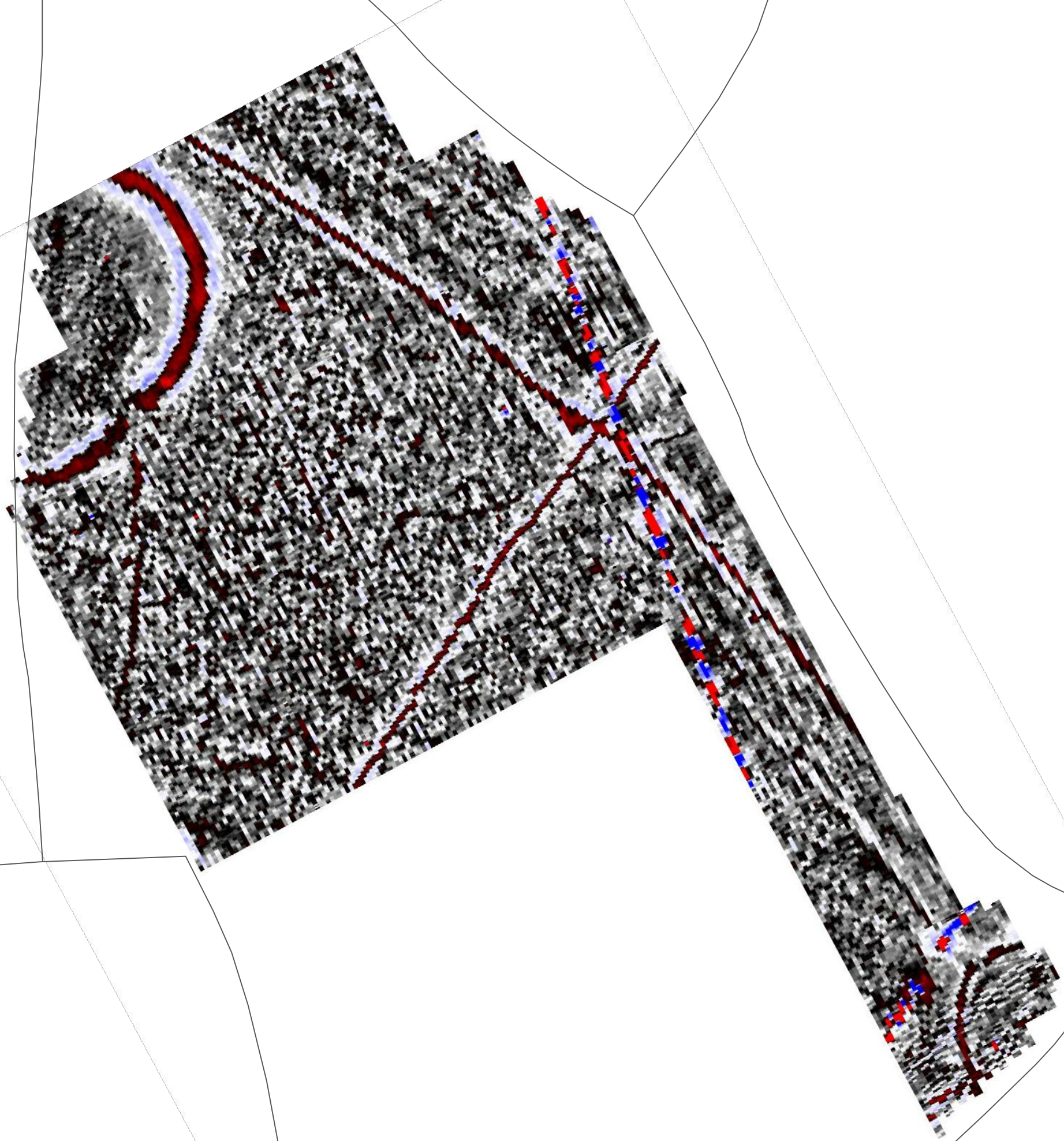
REGISTERED ORGANISATION

ims ISO 9001 certified

ims ISO 14001 certified

Scale **1:2000** 0m 20 40 60 80 100m

Plot <b>A3</b>	Checked by <b>DGE</b>	Issue No. <b>01</b>
	Drawn by <b>TR</b>	Figure No. <b>03</b>



**Amendments**

Issue No.	Date	Description
-	-	-
-	-	-

© Stratascan Ltd - 2013

Plotting parameters

Maximum +100nT (red)  
Minimum -100nT (blue)

+100nT  
-10nT  
-10nT  
-100nT

Client  
**SOUTH WEST ARCHAEOLOGY**

Project Title Job No. J6256  
**TREDINNICK FARM, NEWQUAY,  
CORNWALL**

Subject  
**COLOUR PLOT OF GRADIOMETER  
DATA SHOWING EXTREME VALUES -  
NORTH**

**STRATASCAN™**  
**GEOPHYSICS FOR ARCHAEOLOGY  
AND ENGINEERING**

VINEYARD HOUSE T: 01684 592266  
UPTON UPON SEVERN E: info@stratascan.co.uk  
WR8 0SA www.stratascan.co.uk

**EUROPEAN GPR ASSOCIATION**

**SUMO SURVEYS** SUMO GROUP MEMBER

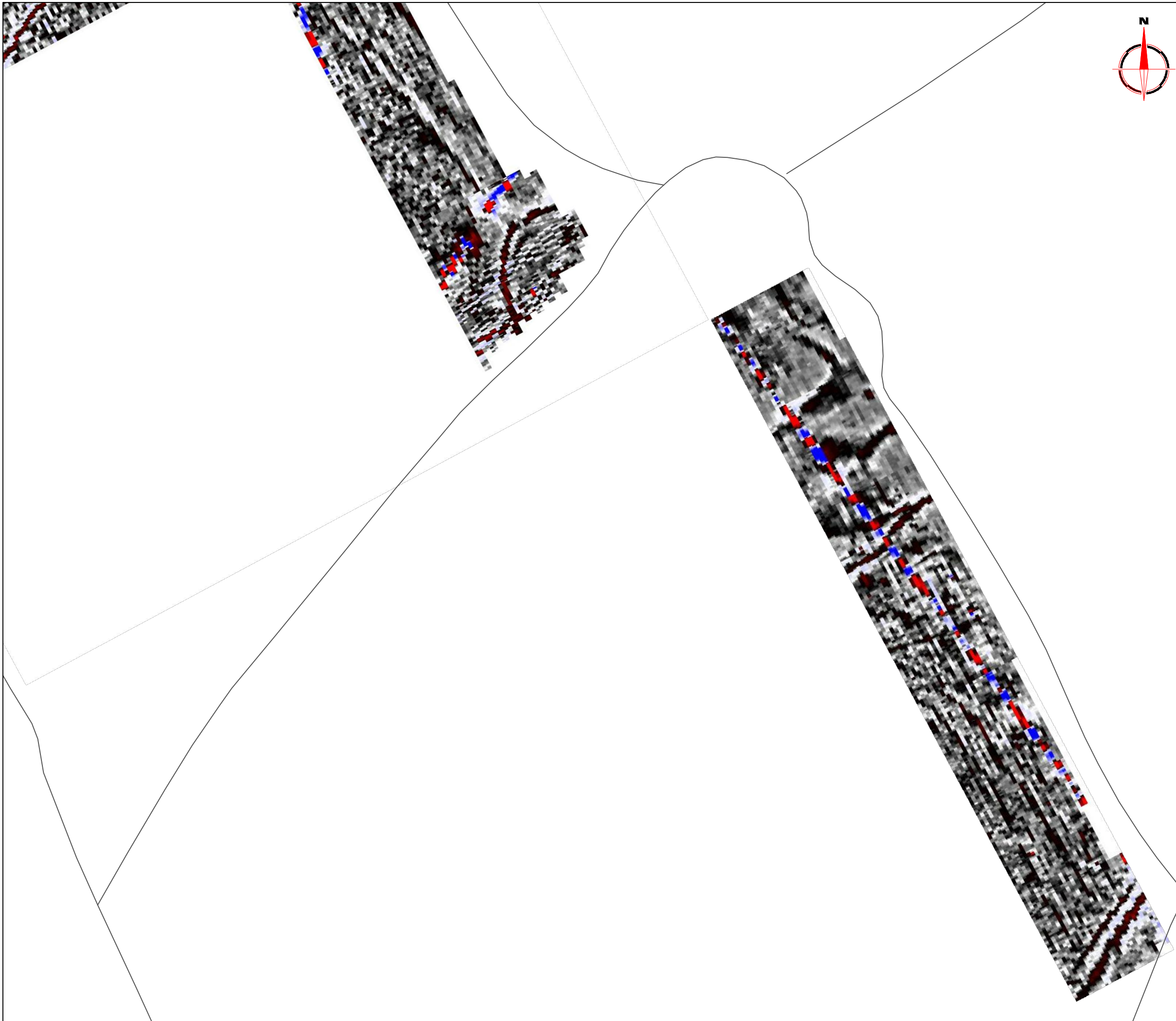
REGISTERED ORGANISATION

ims ISO 9001 certified

ims ISO 14001 certified

Scale 1:1000 0m 10 20 30 40 50

Plot <b>A3</b>	Checked by <b>DGE</b>	Issue No. <b>01</b>
	Drawn by <b>TR</b>	Figure No. <b>04</b>



**Amendments**

Issue No.	Date	Description
-	-	-
-	-	-

© Stratascan Ltd - 2013

Plotting parameters

Maximum +100nT (red)  
Minimum -100nT (blue)

Client  
**SOUTH WEST ARCHAEOLOGY**

Project Title Job No. J6256  
**TREDINNICK FARM, NEWQUAY,  
CORNWALL**

Subject  
**COLOUR PLOT OF GRADIOMETER  
DATA SHOWING EXTREME VALUES -  
SOUTH**

**STRATASCAN™**  
GEOPHYSICS FOR ARCHAEOLOGY  
AND ENGINEERING

VINEYARD HOUSE T: 01684 592266  
UPTON UPON SEVERN E: info@stratascan.co.uk  
WR8 0SA www.stratascan.co.uk

**EUROPEAN GPR ASSOCIATION**

**SUMO GROUP MEMBER**

Scale **1:1000**

Plot <b>A3</b>	Checked by <b>DGE</b>	Issue No. <b>01</b>
	Drawn by <b>TR</b>	Figure No. <b>05</b>



**Amendments**

Issue No.	Date	Description
-	-	-
-	-	-

© Stratascan Ltd - 2013

Plotting parameters

Maximum +7nT (black)  
Minimum -7nT (white)

-7nT      +7nT

+7nT

-7nT

Client  
**SOUTH WEST ARCHAEOLOGY**

Project Title      Job No. J6256  
**TREDINNICK FARM, NEWQUAY,  
CORNWALL**

Subject  
**PLOT OF MINIMALLY PROCESSED  
GRADIOMETER DATA - OVERVIEW**

**STRATASCAN™**  
GEOPHYSICS FOR ARCHAEOLOGY  
AND ENGINEERING

VINEYARD HOUSE      T: 01684 592266  
UPTON UPON SEVERN      E: info@stratascan.co.uk  
WR8 0SA      www.stratascan.co.uk

**EUROPEAN GPR ASSOCIATION**

**SUMO GROUP MEMBER**

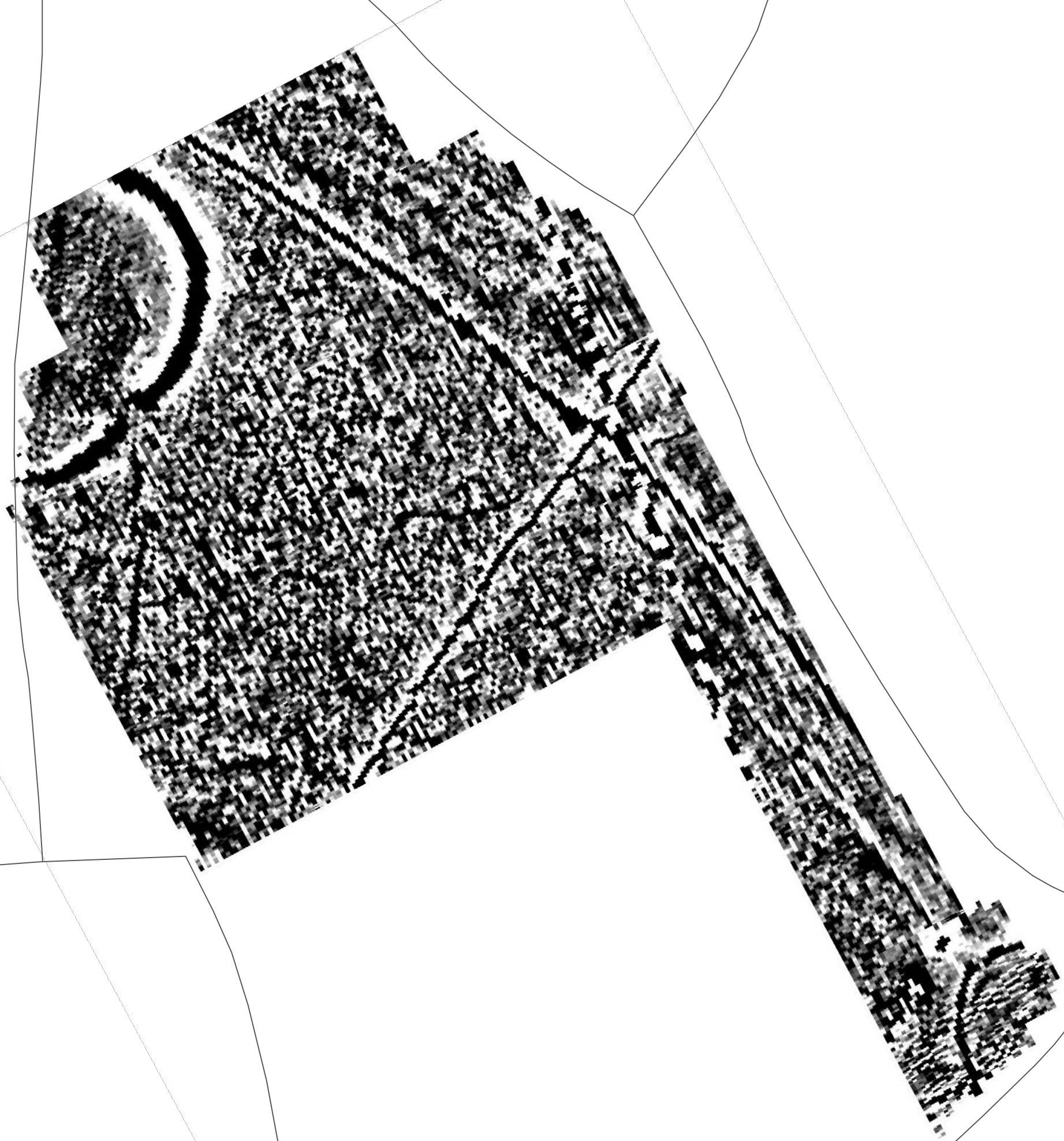
**REGISTERED ORGANISATION**

**ims ISO 9001 certified**      **UKAS**

**ims ISO 14001 certified**      **UKAS**

Scale 1:2000      0m      20      40      60      80      100m

Plot <b>A3</b>	Checked by <b>DGE</b>	Issue No. <b>01</b>
	Drawn by <b>TR</b>	Figure No. <b>06</b>



**Amendments**

Issue No.	Date	Description
-	-	-
-	-	-

© Stratascan Ltd - 2013

Plotting parameters

Maximum +7nT (black)  
Minimum -7nT (white)

Client  
**SOUTH WEST ARCHAEOLOGY**

Project Title Job No. J6256  
**TREDINNICK FARM, NEWQUAY,  
CORNWALL**

Subject  
**PLOT OF MINIMALLY PROCESSED  
GRADIOMETER DATA - NORTH**

**STRATASCAN™**  
**GEOPHYSICS FOR ARCHAEOLOGY  
AND ENGINEERING**

VINEYARD HOUSE T: 01684 592266  
UPTON UPON SEVERN E: info@stratascan.co.uk  
WR8 0SA www.stratascan.co.uk

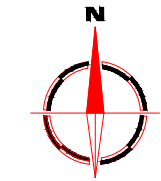
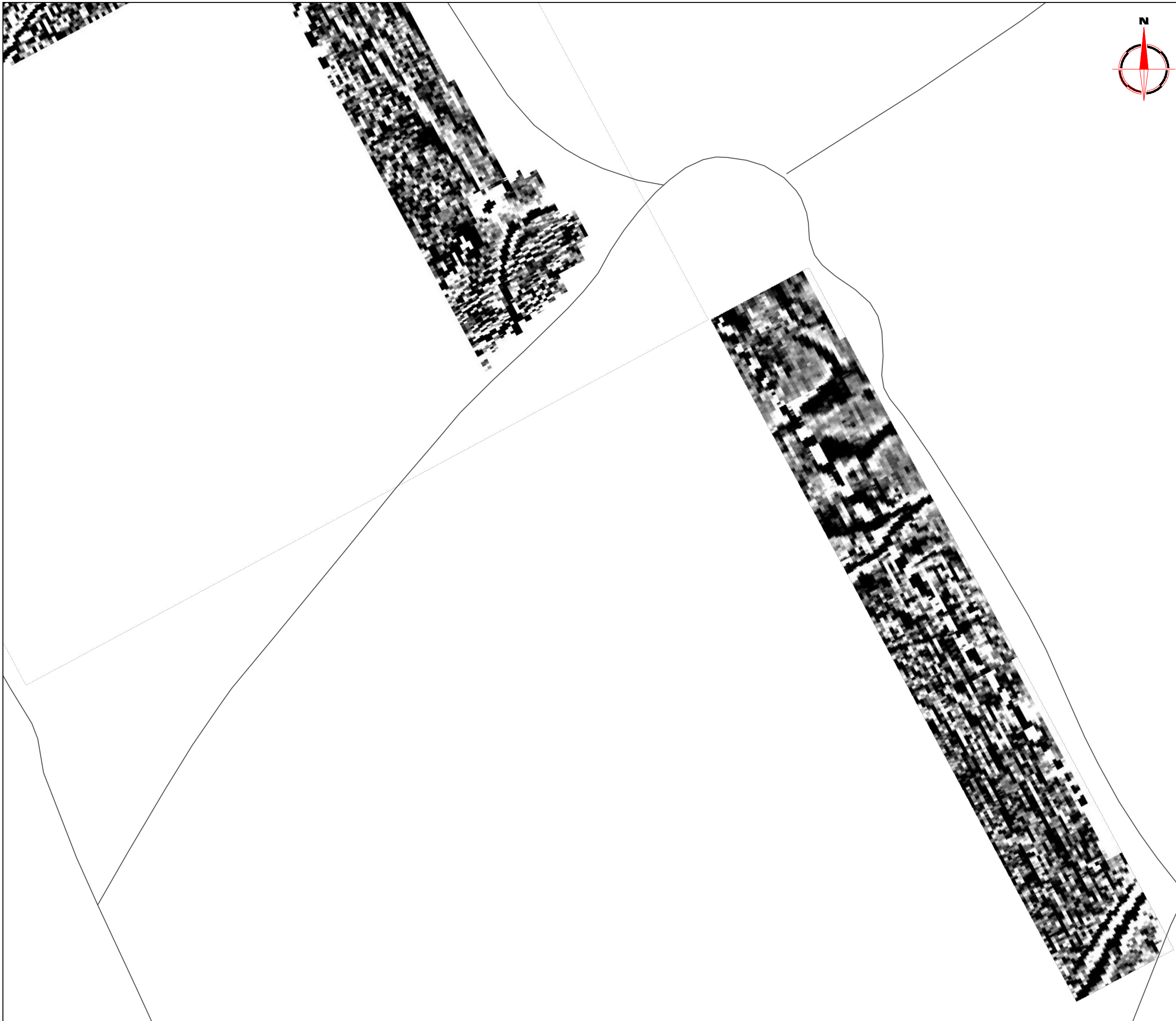
**EUROPEAN GPR ASSOCIATION**

**SUMO GROUP MEMBER**

**ims ISO 9001 certified** **UKAS** **ims ISO 14001 certified** **UKAS**

Scale **1:1000**

Plot <b>A3</b>	Checked by <b>DGE</b>	Issue No. <b>01</b>
	Drawn by <b>TR</b>	Figure No. <b>07</b>



**Amendments**

Issue No.	Date	Description
-	-	-
-	-	-

© Stratascan Ltd - 2013

Plotting parameters

Maximum +7nT (black)  
Minimum -7nT (white)

Client  
**SOUTH WEST ARCHAEOLOGY**

Project Title Job No. J6256  
**TREDINNICK FARM, NEWQUAY,  
CORNWALL**

Subject  
**PLOT OF MINIMALLY PROCESSED  
GRADIOMETER DATA - SOUTH**

**STRATASCAN™**  
GEOPHYSICS FOR ARCHAEOLOGY  
AND ENGINEERING

VINEYARD HOUSE T: 01684 592266  
UPTON UPON SEVERN E: info@stratascan.co.uk  
WR8 0SA www.stratascan.co.uk

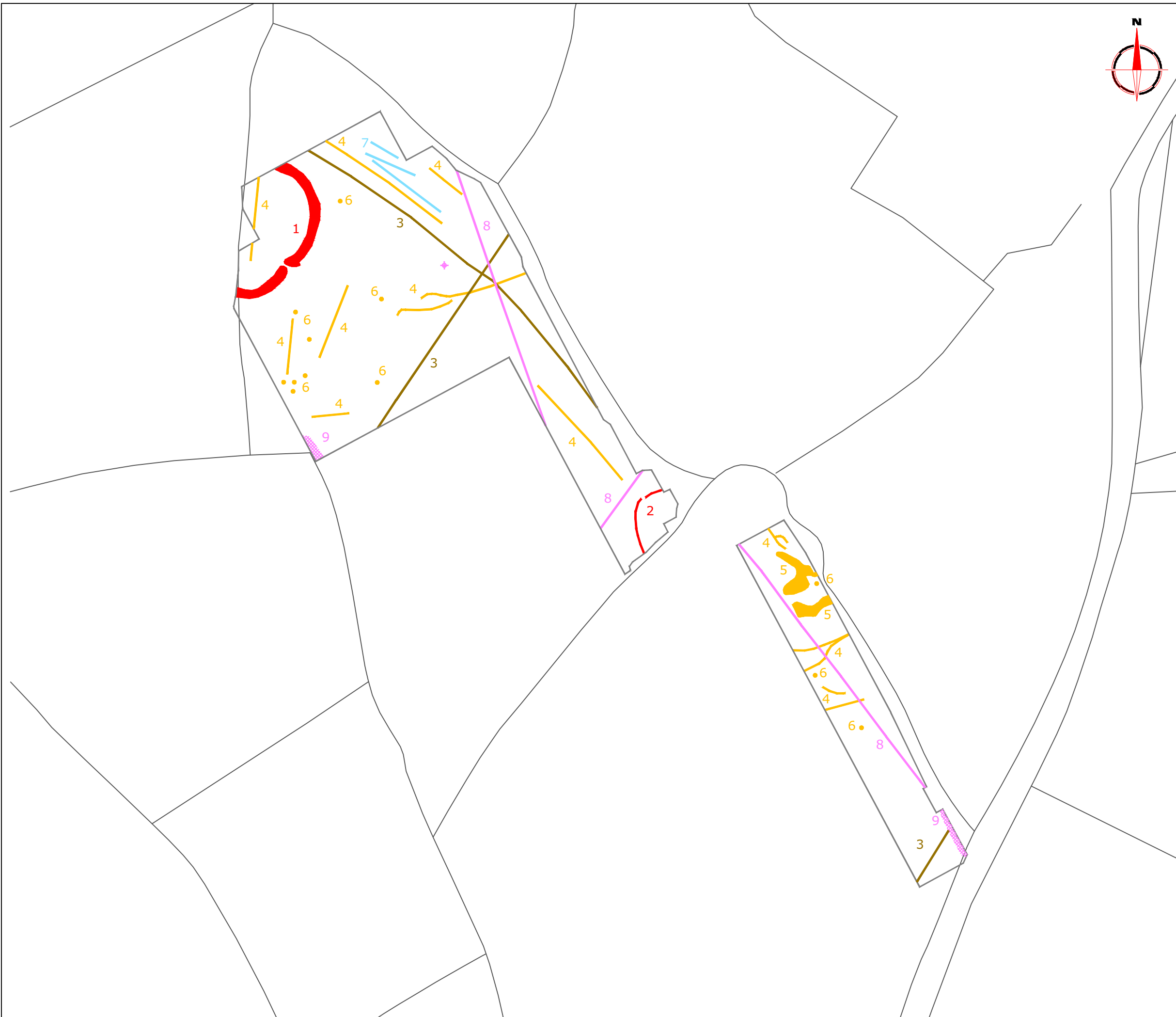
**EUROPEAN GPR ASSOCIATION**

**SUMO GROUP MEMBER**

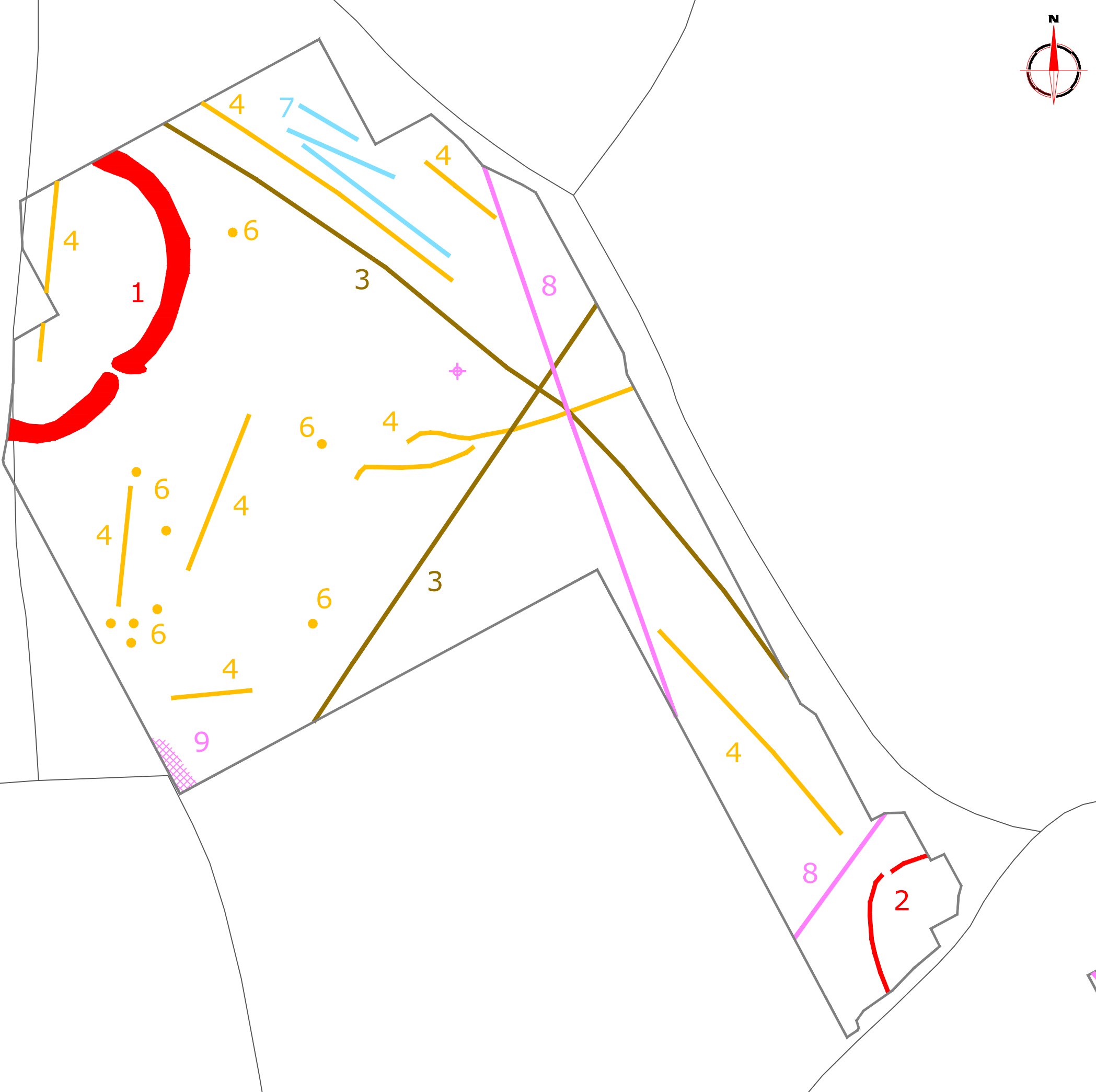
Scale **1:1000**

Plot <b>A3</b>	Checked by <b>DGE</b>	Issue No. <b>01</b>
	Drawn by <b>TR</b>	Figure No. <b>08</b>





Amendments		
Issue No.	Date	Description
-	-	-
-	-	-
© Stratascan Ltd - 2013		
KEY		
PROBABLE ARCHAEOLOGY		
	Positive anomaly / weak positive anomaly - probable cut feature of archaeological origin	
	Negative anomaly / weak negative anomaly - probable bank or earthwork of archaeological origin	
	Linear anomaly - probable former field boundary not present on available mapping	
	Widely spaced curving parallel linear anomalies - probably related to ridge-and-furrow	
POSSIBLE ARCHAEOLOGY		
	Positive anomaly / weak positive anomaly - possible cut feature of archaeological origin	
	Negative anomaly / weak negative anomaly - possible bank or earthwork of archaeological origin	
OTHER ANOMALIES		
	Closely spaced parallel linear anomalies - probably related to agricultural activity such as ploughing	
	Linear anomaly - probably related to pipe, cable or other modern service	
	Linear anomaly - possibly related to land drain	
	Magnetic disturbance associated with nearby metal object such as service or field boundary	
	Strong magnetic debris - possible disturbed or made ground	
	Scattered magnetic debris	
	Area of amorphous magnetic variation - probable natural (e.g. geological or pedological) origin	
	Magnetic spike - probable ferrous object	
Client		
<b>SOUTH WEST ARCHAEOLOGY</b>		
Project Title		Job No. J6256
<b>TREDINNICK FARM, NEWQUAY, CORNWALL</b>		
Subject		
<b>ABSTRACTION AND INTERPRETATION OF GRADIOMETER ANOMALIES - OVERVIEW</b>		
<b>STRATASCAN™</b>		
<b>GEOPHYSICS FOR ARCHAEOLOGY AND ENGINEERING</b>		
VINEYARD HOUSE		T: 01684 592266
UPTON UPON SEVERN		E: info@stratascan.co.uk
WR8 0SA		www.stratascan.co.uk
Scale		
1:2000		
Plot	Checked by	Issue No.
A3	DGE	01
	Drawn by	Figure No.
	TR	09



Amendments		
Issue No.	Date	Description
-	-	-
-	-	-
© Stratascan Ltd - 2013		
KEY		
PROBABLE ARCHAEOLOGY		
	Positive anomaly / weak positive anomaly - probable cut feature of archaeological origin	
	Negative anomaly / weak negative anomaly - probable bank or earthwork of archaeological origin	
	Linear anomaly - probable former field boundary not present on available mapping	
	Widely spaced curving parallel linear anomalies - probably related to ridge-and-furrow	
POSSIBLE ARCHAEOLOGY		
	Positive anomaly / weak positive anomaly - possible cut feature of archaeological origin	
	Negative anomaly / weak negative anomaly - possible bank or earthwork of archaeological origin	
OTHER ANOMALIES		
	Closely spaced parallel linear anomalies - probably related to agricultural activity such as ploughing	
	Linear anomaly - probably related to pipe, cable or other modern service	
	Linear anomaly - possibly related to land drain	
	Magnetic disturbance associated with nearby metal object such as service or field boundary	
	Strong magnetic debris - possible disturbed or made ground	
	Scattered magnetic debris	
	Area of amorphous magnetic variation - probable natural (e.g. geological or pedological) origin	
	Magnetic spike - probable ferrous object	
Client		
<b>SOUTH WEST ARCHAEOLOGY</b>		
Project Title		Job No. J6256
<b>TREDINNICK FARM, NEWQUAY, CORNWALL</b>		
Subject		
<b>ABSTRACTION AND INTERPRETATION OF GRADIOMETER ANOMALIES - NORTH</b>		
<b>STRATASCAN™</b>		
<b>GEOPHYSICS FOR ARCHAEOLOGY AND ENGINEERING</b>		
VINEYARD HOUSE		T: 01684 592266
UPTON UPON SEVERN		E: info@stratascan.co.uk
WR8 0SA		www.stratascan.co.uk
Scale 1:1000		
Plot	Checked by	Issue No.
A3	DGE	01
	Drawn by	Figure No.
	TR	10



Amendments		
Issue No.	Date	Description
-	-	-
-	-	-
© Stratascan Ltd - 2013		
KEY		
PROBABLE ARCHAEOLOGY		
	Positive anomaly / weak positive anomaly - probable cut feature of archaeological origin	
	Negative anomaly / weak negative anomaly - probable bank or earthwork of archaeological origin	
	Linear anomaly - probable former field boundary not present on available mapping	
	Widely spaced curving parallel linear anomalies - probably related to ridge-and-furrow	
POSSIBLE ARCHAEOLOGY		
	Positive anomaly / weak positive anomaly - possible cut feature of archaeological origin	
	Negative anomaly / weak negative anomaly - possible bank or earthwork of archaeological origin	
OTHER ANOMALIES		
	Closely spaced parallel linear anomalies - probably related to agricultural activity such as ploughing	
	Linear anomaly - probably related to pipe, cable or other modern service	
	Linear anomaly - possibly related to land drain	
	Magnetic disturbance associated with nearby metal object such as service or field boundary	
	Strong magnetic debris - possible disturbed or made ground	
	Scattered magnetic debris	
	Area of amorphous magnetic variation - probable natural (e.g. geological or pedological) origin	
	Magnetic spike - probable ferrous object	
Client		
<b>SOUTH WEST ARCHAEOLOGY</b>		
Project Title		Job No. J6256
<b>TREDINNICK FARM, NEWQUAY, CORNWALL</b>		
Subject		
<b>ABSTRACTION AND INTERPRETATION OF GRADIOMETER ANOMALIES - SOUTH</b>		
<b>STRATASCAN™</b>		
<b>GEOPHYSICS FOR ARCHAEOLOGY AND ENGINEERING</b>		
VINEYARD HOUSE		T: 01684 592266
UPTON UPON SEVERN		E: info@stratascan.co.uk
WR8 0SA		www.stratascan.co.uk
Scale		
<b>1:1000</b>		
0m 10 20 30 40 50		
Plot	Checked by	Issue No.
<b>A3</b>	<b>DGE</b>	<b>01</b>
	Drawn by	Figure No.
	<b>TR</b>	<b>11</b>