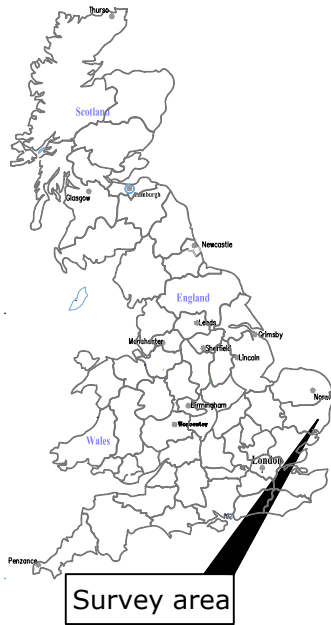


### Amendments

Issue No.	Date	Description
-	-	-
-	-	-

© Stratascan Ltd - 2014



Site centred on NGR TM 316 574

### OS REFERENCING INFORMATION

A	631705.76, 257688.00
B	631705.76, 257238.00

Job No.	Survey Date
J6594	MAR 14

Client

AMEC EARTH AND  
ENVIRONMENTAL UK LTD

Project Title

WICKHAM MARKET, SUFFOLK

Subject

SITE LOCATION, SURVEY  
AREA & REFERENCING

**STRATASCAN**<sup>TM</sup>  
GEOPHYSICS FOR ARCHAEOLOGY  
AND ENGINEERING

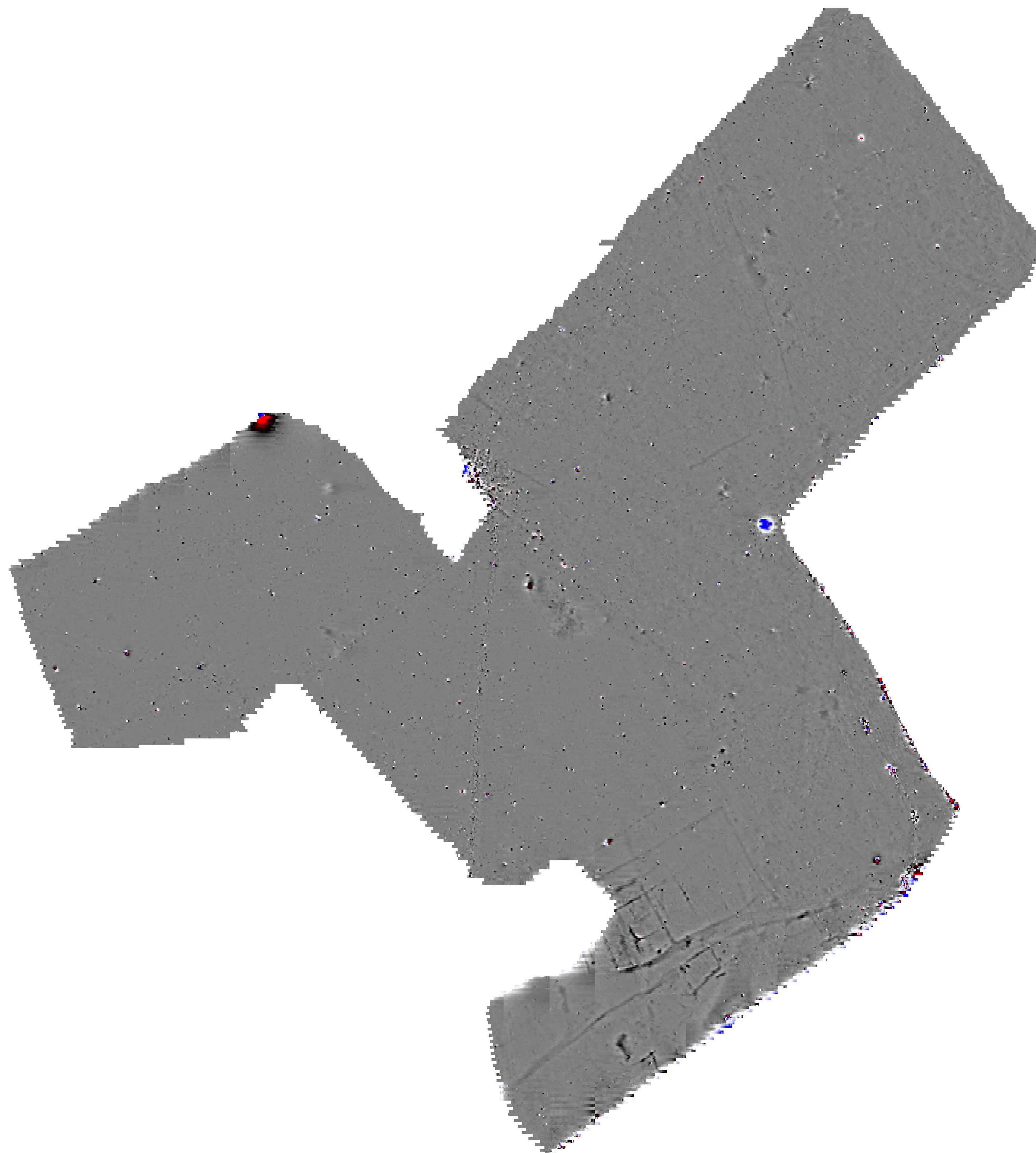
VINEYARD HOUSE T: 01684 592266  
UPTON UPON SEVERN E: info@stratascan.co.uk  
WR8 0SA www.stratascan.co.uk



Scale 0m 10 20 30 40 50 60 70 80 90m  
1:1500

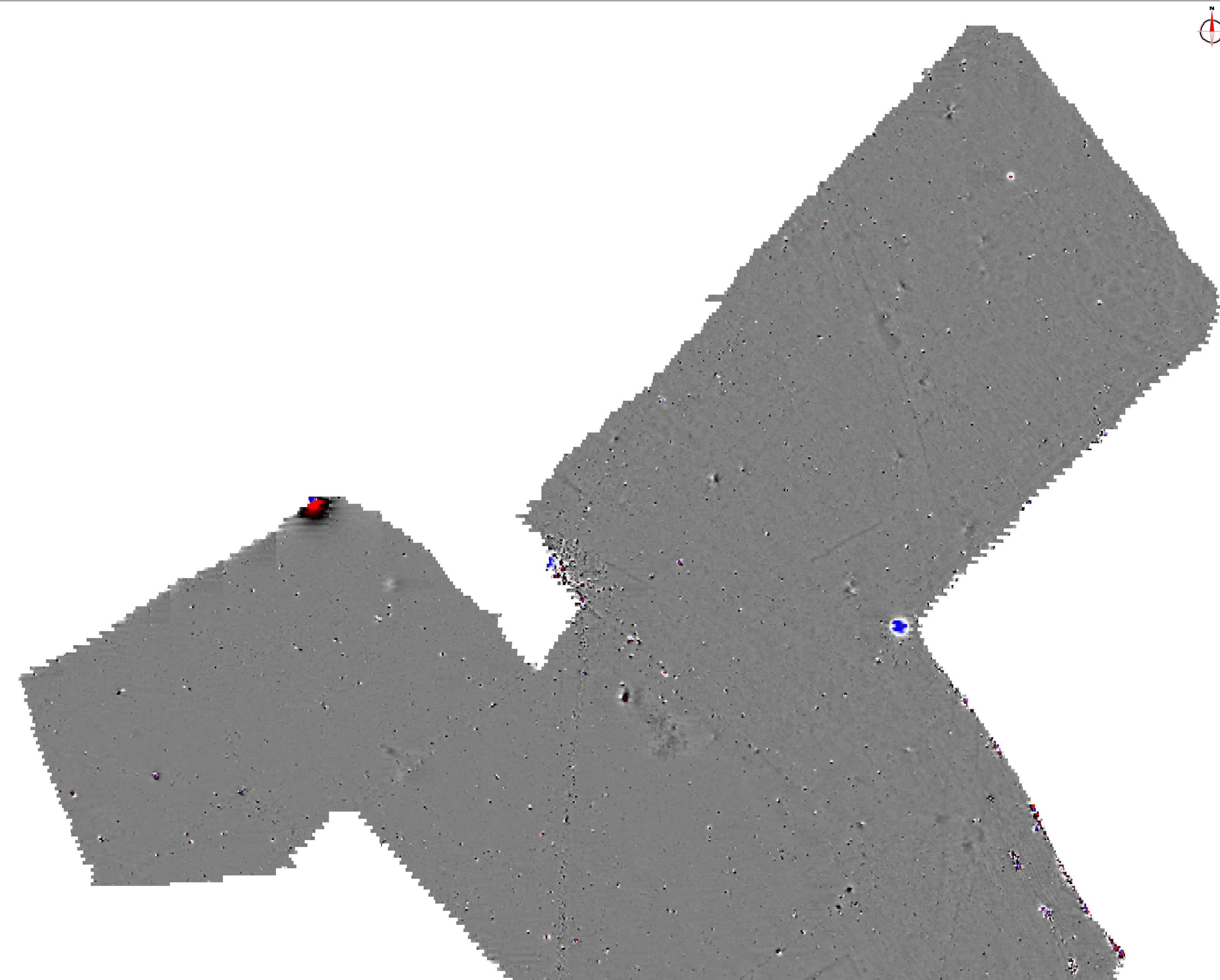
Plot	Checked by	Issue No.
A1	DGE	01
Date	Drawn by	Figure No.
APR 14	TR	01





Amendments		
Issue No.	Date	Description
-	-	-
-	-	-
© Stratascan Ltd - 2014		
<div></div>		
Plotting parameters		<div><div></div><div>+100nT</div><div>+10nT</div><div>-10nT</div><div>-100nT</div></div>
Maximum +100nT (red)		
Minimum -100nT (blue)		
Job No.	6594	Survey Date
MAR 14		
Client		
AMEC EARTH AND ENVIRONMENTAL UK LTD		
Project Title		
WICKHAM MARKET, SUFFOLK		
Subject		
COLOUR PLOT OF MINIMALLY PROCESSED GRADIOMETER DATA SHOWING EXTREME VALUES - OVERVIEW		
<div><div>STRATASCAN</div><div>GEOPHYSICS FOR ARCHAEOLOGY AND ENGINEERING</div><div>VINEYARD HOUSE UPTON UPON SEVERN WR8 0SA</div><div>T: 01684 592266 E: info@stratascan.co.uk www.stratascan.co.uk</div></div>		
<div><div><div><div>EUROPEAN GPR ASSOCIATION</div><div></div><div>SUMO GROUP MEMBER</div></div><div><div></div><div></div><div></div><div></div></div></div></div>		
Scale	0m 10 20 30 40 50 60 70 80 90m	
1:1500		
Plot	A1	Checked by DGE
Issue No.	01	
Date	APR 14	Drawn by TR
Figure No.	02	





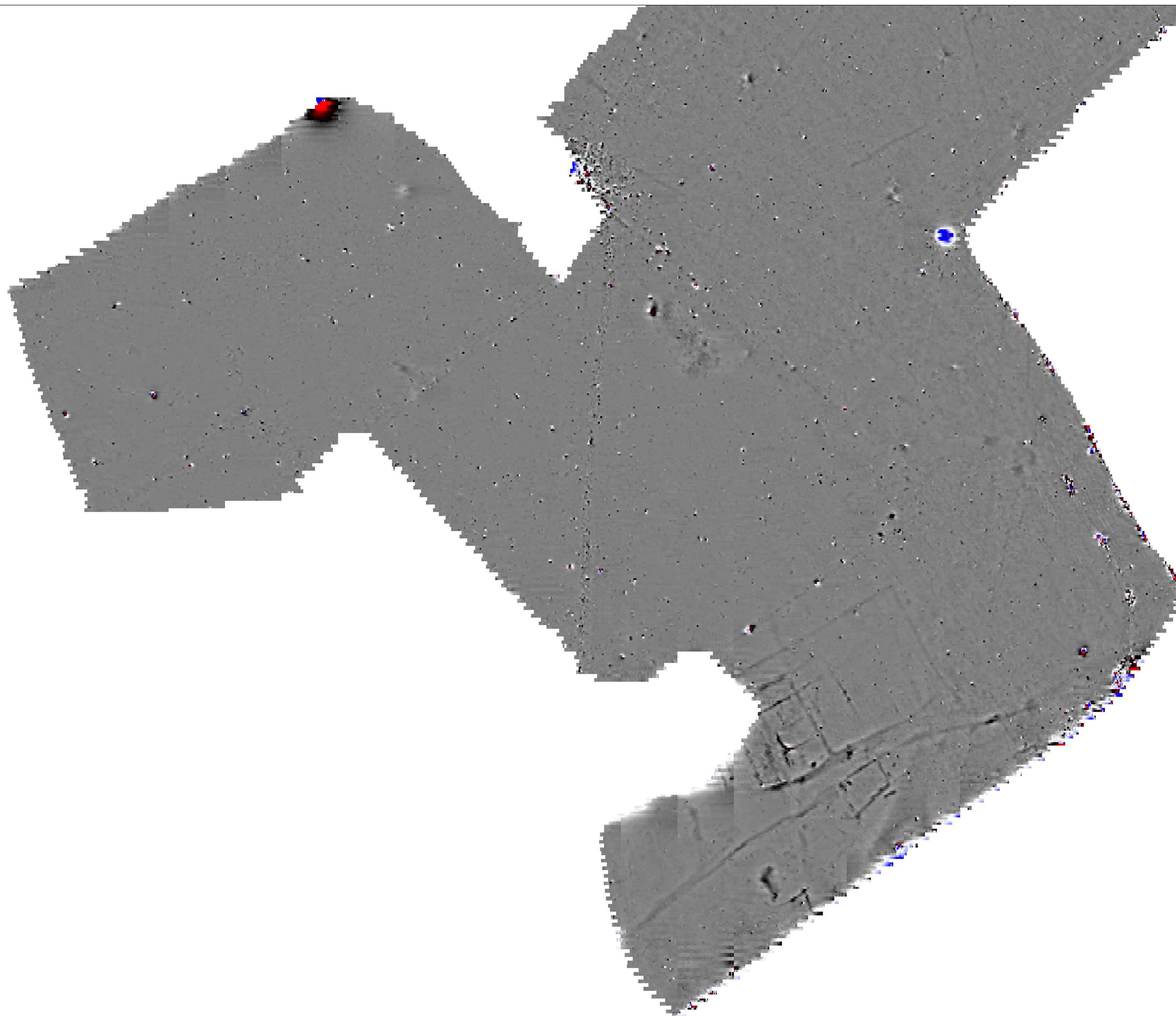
Amendments		
Issue No.	Date	Description
-	-	-
-	-	-
© Stratascan Ltd - 2014		

Plotting parameters		<div>+100nT</div> <div>+10nT</div> <div>-10nT</div> <div>-100nT</div>
Maximum +100nT (red)		
Minimum -100nT (blue)		

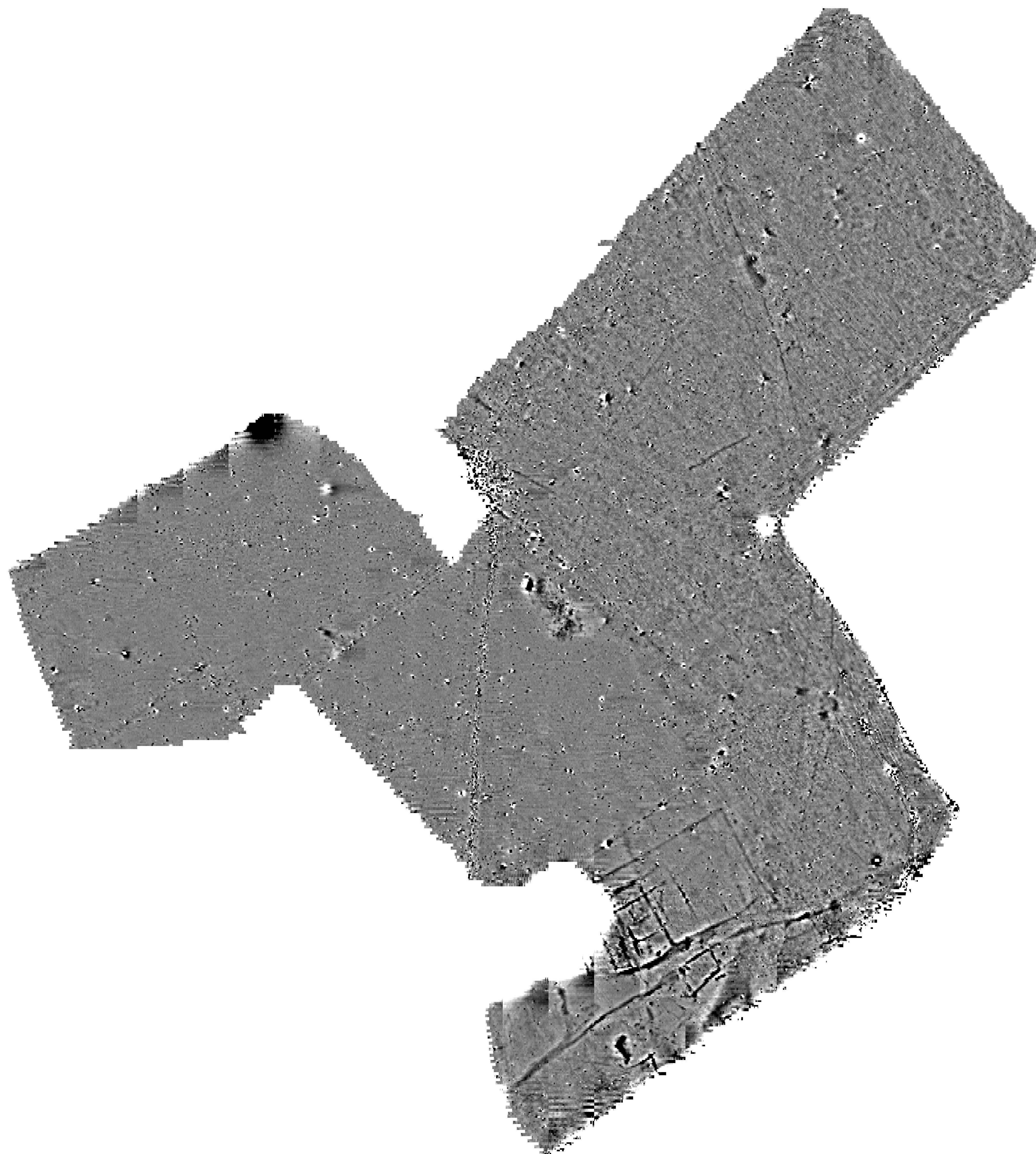
Job No.	J6594	Survey Date	MAR 14
Client			
AMEC EARTH AND ENVIRONMENTAL UK LTD			
Project Title			
WICKHAM MARKET, SUFFOLK			
Subject			
COLOUR PLOT OF MINIMALLY PROCESSED GRADIOMETER DATA SHOWING EXTREME VALUES - NORTH			
VINEYARD HOUSE UPTON UPON SEVERN WR8 0SA			
T: 01684 592266 E: info@stratascan.co.uk www.stratascan.co.uk			
Scale			
1:1000			
Plot	A1	Checked by	DGE
Date	APR 14	Issue No.	01
		Drawn by	TR
		Figure No.	03


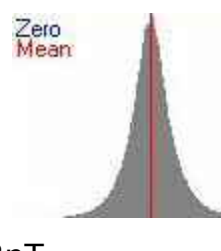






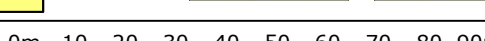




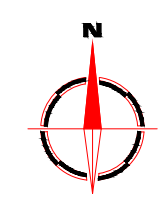
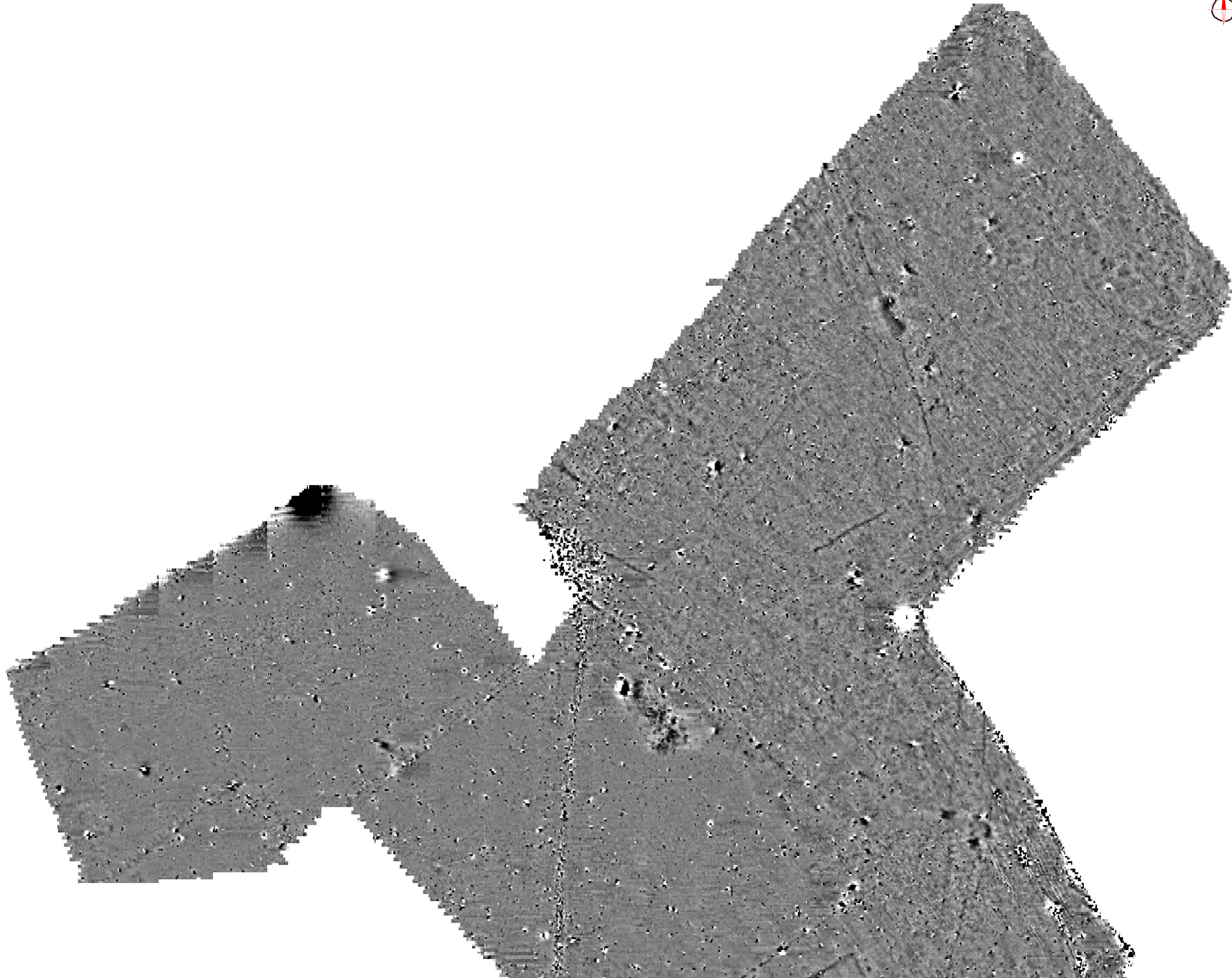
Amendments		
Issue No.	Date	Description
-	-	-
-	-	-
© Stratascan Ltd - 2014		
Plotting parameters Maximum +100nT (red) Minimum -100nT (blue)		
Job No.	6594	Survey Date MAR 14
Client AMEC EARTH AND ENVIRONMENTAL UK LTD		
Project Title WICKHAM MARKET, SUFFOLK		
Subject COLOUR PLOT OF MINIMALLY PROCESSED GRADIOMETER DATA SHOWING EXTREME VALUES - SOUTH		
VINEYARD HOUSE UPTON UPON SEVERN WR8 0SA		T: 01684 592266 E: info@stratascan.co.uk www.stratascan.co.uk
SUMO GROUP MEMBER		
Scale 1:1000		
Plot A1	Checked by DGE	Issue No. 01
Date APR 14	Drawn by TR	Figure No. 04





Amendments		
Issue No.	Date	Description
-	-	-
-	-	-
© Stratascan Ltd - 2014		
Plotting parameters		+2nT
Maximum +2nT (black) Minimum -2nT (white)		
		
-2nT +2nT		-2nT
Job No.	Survey Date	
J6594	MAR 14	
Client		
AMEC EARTH AND ENVIRONMENTAL UK LTD		
Project Title		
WICKHAM MARKET, SUFFOLK		
Subject		
PLOT OF MINIMALLY PROCESSED GRADIOMETER DATA - OVERVIEW		
<div><div></div><div><div>GEOPHYSICS FOR ARCHAEOLOGY AND ENGINEERING</div><div>VINEYARD HOUSE UPTON UPON SEVERN WR8 0SA</div><div>T: 01684 592266 E: info@stratascan.co.uk www.stratascan.co.uk</div></div></div>		
<div><div></div><div><div></div><div>SUMO GROUP MEMBER</div></div><div><div></div><div></div><div></div></div></div>		
Scale		
1:1500		
		
Plot	Checked by	Issue No.
A1	DGE	01
Date	Drawn by	Figure No.
APR 14	TR	05





Amendments

Issue No.	Date	Description
-	-	-
-	-	-

© Stratascan Ltd - 2014

Plotting parameters

Maximum +2nT (black)  
Minimum -2nT (white)

-2nT

+2nT

+2nT

-2nT

Job No.

J6594

Survey Date

MAR 14

Client

AMEC EARTH AND ENVIRONMENTAL UK LTD

Project Title

WICKHAM MARKET, SUFFOLK

Subject

PLOT OF MINIMALLY PROCESSED GRADIOMETER DATA - NORTH

STRATASCAN™

GEOPHYSICS FOR ARCHAEOLOGY AND ENGINEERING

VINEYARD HOUSE  
UPTON UPON SEVERN  
WR8 0SA

T: 01684 592266  
E: info@stratascan.co.uk  
www.stratascan.co.uk

GPR ASSOCIATION

SUMO GROUP MEMBER

IMS ISO 9001 certified

UKAS ISO 9001 certified

IMS ISO 14001 certified

Scale

1:1000

0m

10

20

30

40

50

60m

Plot

A1

Checked by

DGE

Issue No.

01

Date

APR 14

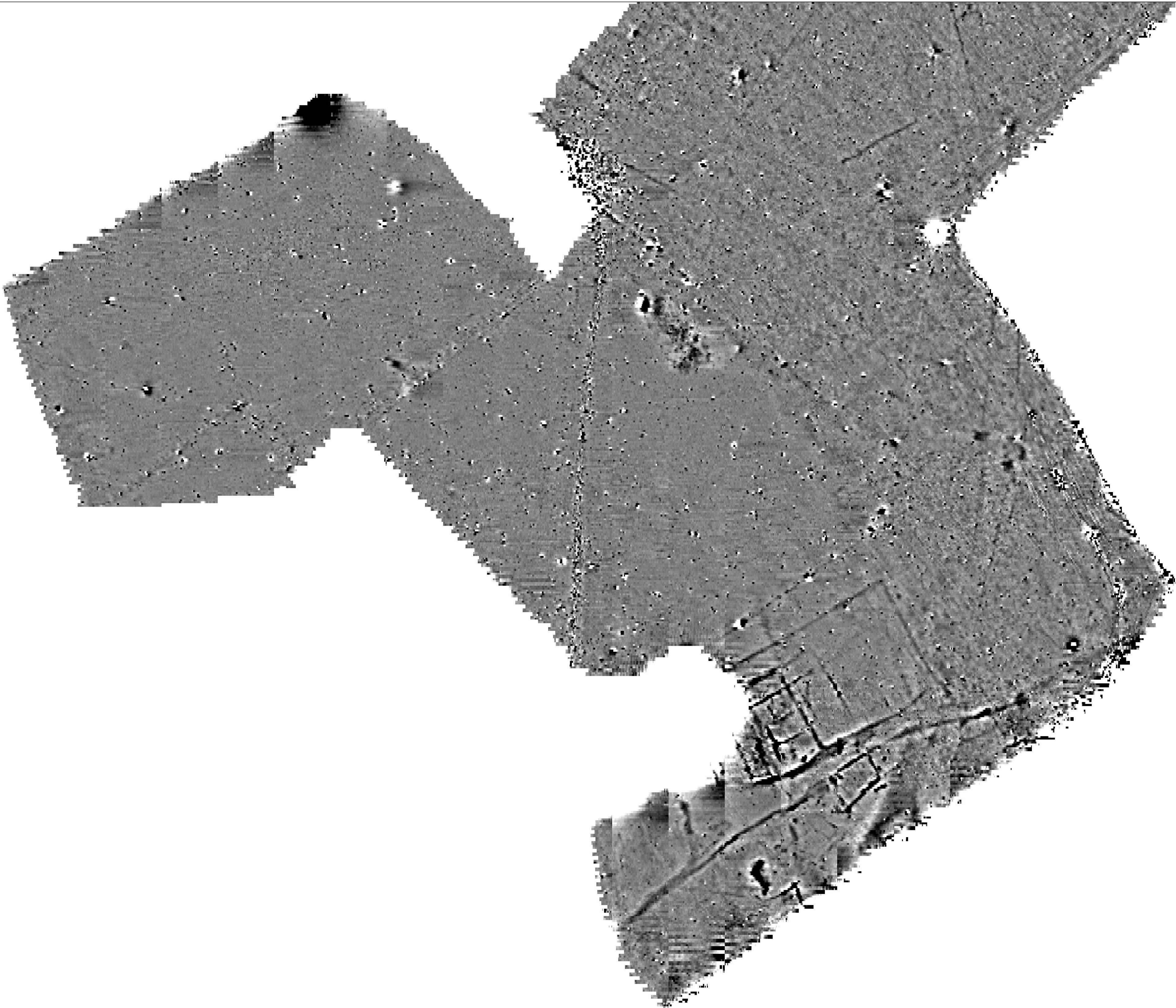
Drawn by

TR

Figure No.

06





Amendments

Issue No.	Date	Description
-	-	-
-	-	-

© Stratascan Ltd - 2014

Plotting parameters

Maximum +2nT (black)

Minimum -2nT (white)

Zero Mean

-2nT

+2nT

+2nT

-2nT

Job No.

J6594

Survey Date

MAR 14

Client

AMEC EARTH AND ENVIRONMENTAL UK LTD

Project Title

WICKHAM MARKET, SUFFOLK

Subject

PLOT OF MINIMALLY PROCESSED GRADIOMETER DATA - SOUTH

STRATASCAN™

GEOPHYSICS FOR ARCHAEOLOGY AND ENGINEERING

VINEYARD HOUSE  
UPTON UPON SEVERN  
WR8 0SA

T: 01684 592266  
E: info@stratascan.co.uk  
www.stratascan.co.uk

GPR ASSOCIATION

SUMO GROUP MEMBER

ISO 9001 certified

ISO 14001 certified

ULAS

Scale

1:1000

0m 10 20 30 40 50 60m

Plot

A1

Checked by

DGE

Issue No.

01

Date

APR 14

Drawn by

TR

Figure No.

07









Amendments

Issue No.	Date	Description
-	-	-
-	-	-
© Stratascan Ltd - 2014		

KEY

PROBABLE ARCHAEOLOGY

	Positive anomaly / weak positive anomaly - probable cut feature of archaeological origin
	Negative anomaly / weak negative anomaly - probable bank or earthwork of archaeological origin
	Linear anomaly related to a former field boundary present on available mapping pre-1900
	Linear area of scattered magnetic debris related to a footpath present on available mapping pre-1900
	Widely spaced curving parallel linear anomalies - probably related to ridge-and-furrow

POSSIBLE ARCHAEOLOGY

	Positive anomaly / weak positive anomaly - possible cut feature of archaeological origin
	Negative anomaly / weak negative anomaly - possible bank or earthwork of archaeological origin

OTHER ANOMALIES

	Closely spaced parallel linear anomalies - probably related to agricultural activity such as ploughing
	Linear anomaly - probably related to pipe, cable or other modern service
	Linear anomaly - possibly related to land drain
	Magnetic disturbance associated with nearby metal object such as service or field boundary
	Strong magnetic debris - possible disturbed or made ground
	Scattered magnetic debris
	Area of amorphous magnetic variation - probable natural (e.g. geological or pedological) origin
	Magnetic spike - probable ferrous object

Job No.

J6594

Survey Date

MAR 14

Client

AMEC EARTH AND ENVIRONMENTAL UK LTD

Project Title

WICKHAM MARKET, SUFFOLK

Subject

INTERPRETATION - NORTH

STRATASCAN™

GEOPHYSICS FOR ARCHAEOLOGY AND ENGINEERING

VINEYARD HOUSE  
UPTON UPON SEVERN  
WR8 0SA

T: 01684 592266  
E: info@stratascan.co.uk  
www.stratascan.co.uk

Scale

1:1000

0m 10 20 30 40 50 60m

Plot

A1

Checked by

DGE

Issue No.

01

Date

APR 14

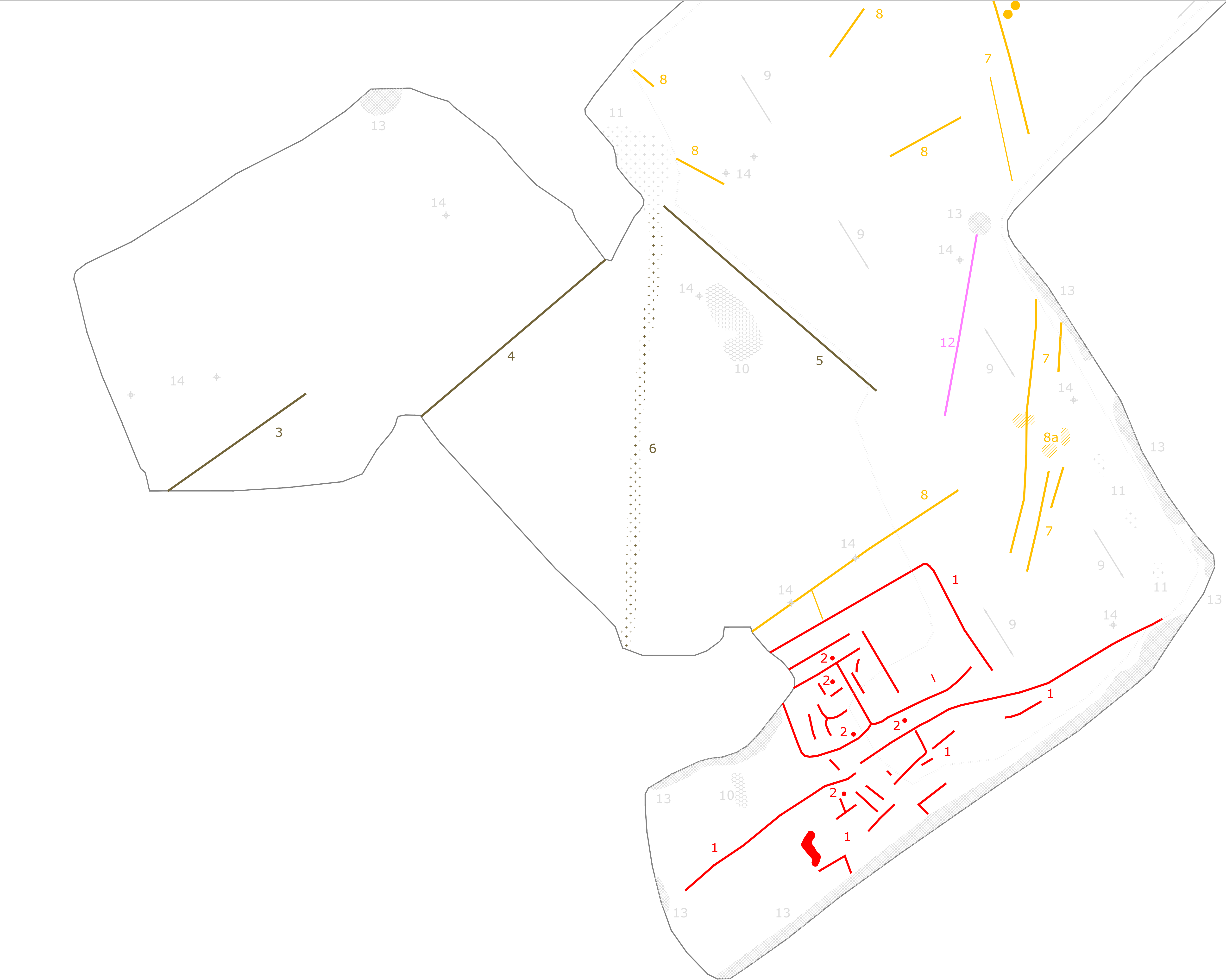
Drawn by

TR

Figure No.

09





Amendments

Issue No.	Date	Description
-	-	-
-	-	-
-	-	-

© Stratascan Ltd - 2014

KEY

PROBABLE ARCHAEOLOGY

Positive anomaly / weak positive anomaly - probable cut feature of archaeological origin

Negative anomaly / weak negative anomaly - probable bank or earthwork of archaeological origin

Linear anomaly related to a former field boundary present on available mapping pre-1900

Linear area of scattered magnetic debris related to a footpath present on available mapping pre-1900

Widely spaced curving parallel linear anomalies - probably related to ridge-and-furrow

POSSIBLE ARCHAEOLOGY

Positive anomaly / weak positive anomaly - possible cut feature of archaeological origin

Negative anomaly / weak negative anomaly - possible bank or earthwork of archaeological origin

OTHER ANOMALIES

Closely spaced parallel linear anomalies - probably related to agricultural activity such as ploughing

Linear anomaly - probably related to pipe, cable or other modern service

Linear anomaly - possibly related to land drain

Magnetic disturbance associated with nearby metal object such as service or field boundary

Strong magnetic debris - possible disturbed or made ground

Scattered magnetic debris

Area of amorphous magnetic variation - probable natural (e.g. geological or pedological) origin

Magnetic spike - probable ferrous object

Job No.

J6594

Survey Date

MAR 14

Client

AMEC EARTH AND ENVIRONMENTAL UK LTD

Project Title

WICKHAM MARKET, SUFFOLK

Subject

INTERPRETATION - SOUTH

STRATASCAN™

GEOPHYSICS FOR ARCHAEOLOGY AND ENGINEERING

VINEYARD HOUSE  
UPTON UPON SEVERN  
WR8 0SA

T: 01684 592266  
E: info@stratascan.co.uk  
www.stratascan.co.uk

EUROPEAN GPR ASSOCIATION

SUMO GROUP MEMBER

ISO 9001 certified

ISO 14001 certified

ISO 18001 certified

Scale

1:1000

0m 10 20 30 40 50 60m

Plot

A1

Checked by

DGE

Issue No.

01

Date

APR 14

Drawn by

TR

Figure No.

10