

Reproduced from Ordnance Survey's 1:25 000 map of 1988 with the permission of the controller of Her Majesty's Stationary Office. Crown Copyright reserved.
Licence No: AL 50125A
Licence: Stratascan Ltd.
Vineyard House
Upper Hook Road
Upton Upon Severn
WR8 0SA
OS 100km square = SK

Survey area



Amendments

Issue No.	Date	Description
-	-	-
-	-	-

© Stratascan Ltd - 2014

Site centred on NGR SK 301 356

KEY

Survey area

Survey grid

GPS referencing point

Unsurveyable area

OS REFERENCING INFORMATION

A

430062.37, 336016.36

B

430212.10, 335791.69

C

430587.86, 336282.74

D

430674.59, 336160.35

Job No.

6366

Survey Date

JAN 2014

Client

CgMs CONSULTING LTD.

Project Title

HACKWOOD FARM,
RADBOURNE, DERBYSHIRE

Subject

SITE LOCATION AND SURVEY
AREA & REFERENCING

STRATASCANTM
GEOPHYSICS FOR ARCHAEOLOGY
AND ENGINEERING
VINEYARD HOUSE
UPTON UPON SEVERN
WR8 0SA
T: 01684 592266
E: info@stratascan.co.uk
www.stratascan.co.uk

GPR
ASSOCIATION
SUMO
GROUP
MEMBER

Scale

1:2000

Plot

A1

Date

JAN 2014

Checked by

DGE

Drawn by

OJP

Issue No.

P1

Figure No.

01

0m

20

40

60

80

100

120m



Amendments		
Issue No.	Date	Description
-	-	-
-	-	-
© Stratascan Ltd - 2014		

Plotting parameters

Maximum +100nT (red)
Minimum -100nT (blue)

+100nT
+10nT
-10nT
-100nT

Job No. 6366
Survey Date JAN 2014

Client
CgMs CONSULTING LTD.

Project Title
HACKWOOD FARM,
RADBOURNE, DERBYSHIRE

Subject
COLOUR PLOT OF MINIMALLY
PROCESSED GRADIOMETER
DATA SHOWING EXTREME
VALUES

STRATASCAN
GEOPHYSICS FOR ARCHAEOLOGY
AND ENGINEERING

VINEYARD HOUSE
UPTON UPON SEVERN
WR8 0SA

T: 01684 592266
E: info@stratascan.co.uk
www.stratascan.co.uk

GPR
ASSOCIATION

SUMO
ISO 9001
certified
MEMBER

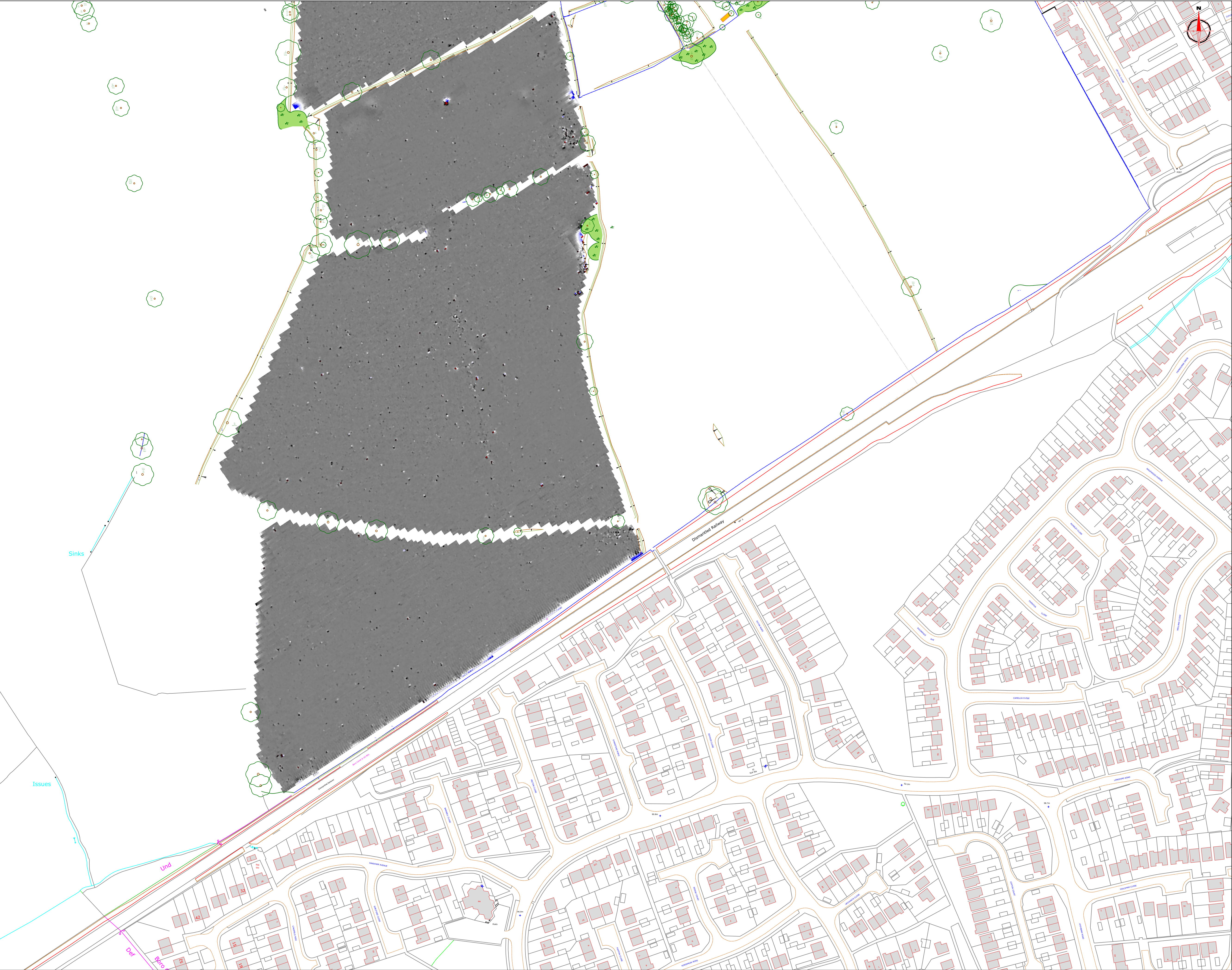
IMS
ISO 9001
certified

IMS
ISO 14001
certified

Scale 0m 10 20 30 40 50 60 70 80m
1:1250

Plot A1
Checked by DGE
Date JAN 2014

Issue No. P1
Figure No. 02



Amendments		
Issue No.	Date	Description
-	-	-
-	-	-
© Stratascan Ltd - 2014		

Plotting parameters

Maximum +100nT (red)
Minimum -100nT (blue)

+100nT

+10nT

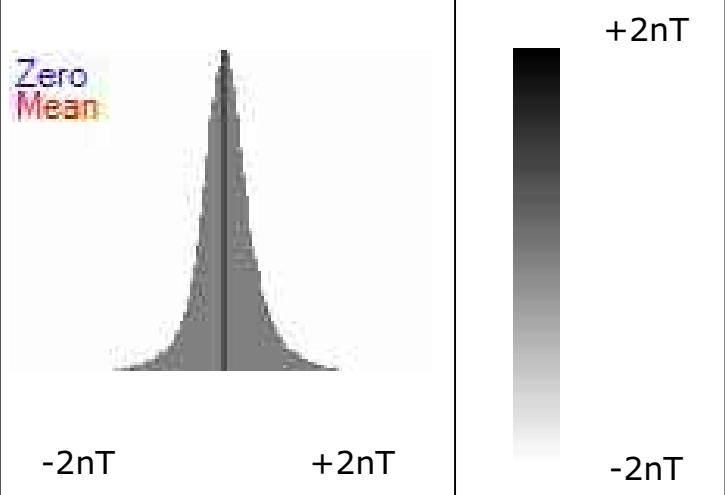
-10nT

-100nT






Job No.	6366	Survey Date	JAN 2014
Client	CgMs CONSULTING LTD.		
Project Title	HACKWOOD FARM, RADBOURNE, DERBYSHIRE		
Subject	COLOUR PLOT OF MINIMALLY PROCESSED GRADIOMETER DATA SHOWING EXTREME VALUES		
<div><div>STRATASCANTM</div><div>GEOPHYSICS FOR ARCHAEOLOGY AND ENGINEERING</div><div>VINEYARD HOUSE UPTON UPON SEVERN WR8 0SA</div><div>T: 01684 592266 E: info@stratascan.co.uk www.stratascan.co.uk</div></div>			
<div><div><div>GPR ASSOCIATION</div><div>SUMO GROUP MEMBER</div></div><div><div>ISO 9001 certified</div><div>ISO 14001 certified</div><div>ISO 45001 certified</div></div></div>			
Scale	0m 10 20 30 40 50 60 70 80m		
Plot	A1	Checked by DGE	Issue No. P1
Date	JAN 2014	Drawn by OJP	Figure No. 03



Amendments		
Issue No.	Date	Description
-	-	-
-	-	-
© Stratascan Ltd - 2014		



-2nT +2nT -2nT

Job No.	6366	Survey Date	JAN 2014
Client	CgMs CONSULTING LTD.		
Project Title	HACKWOOD FARM, RADBOURNE, DERBYSHIRE		
Subject	PLOT OF MINIMALLY PROCESSED GRADIOMETER DATA		
STRATASCAN TM GEOPHYSICS FOR ARCHAEOLOGY AND ENGINEERING VINEYARD HOUSE T: 01684 592266 UPTON UPON SEVERN E: info@stratascan.co.uk WR8 0SA www.stratascan.co.uk			
    			
Scale	0m 10 20 30 40 50 60 70 80m		
1:1250			
Plot	A1	Checked by	DGE
Date	JAN 2014	Drawn by	OJP
		Issue No.	P1
		Figure No.	04



Amendments		
Issue No.	Date	Description
-	-	-
-	-	-
© Stratascan Ltd - 2014		

Zero Mean

+2nT

-2nT

Job No.
6366

Survey Date
JAN 2014

Client
CgMs CONSULTING LTD.

Project Title
**HACKWOOD FARM,
RADBOURNE, DERBYSHIRE**

Subject
**PLOT OF MINIMALLY
PROCESSED GRADIOMETER
DATA**

STRATASCANTM

GEOPHYSICS FOR ARCHAEOLOGY
AND ENGINEERING

VINEYARD HOUSE
UPTON UPON SEVERN
WR8 0SA

T: 01684 592266
E: info@stratascan.co.uk
www.stratascan.co.uk

GPR
ASSOCIATION

SUMO
GROUP
MEMBER

ISO 9001
certified

ISO 14001
certified

Scale
1:1250

Plot
A1

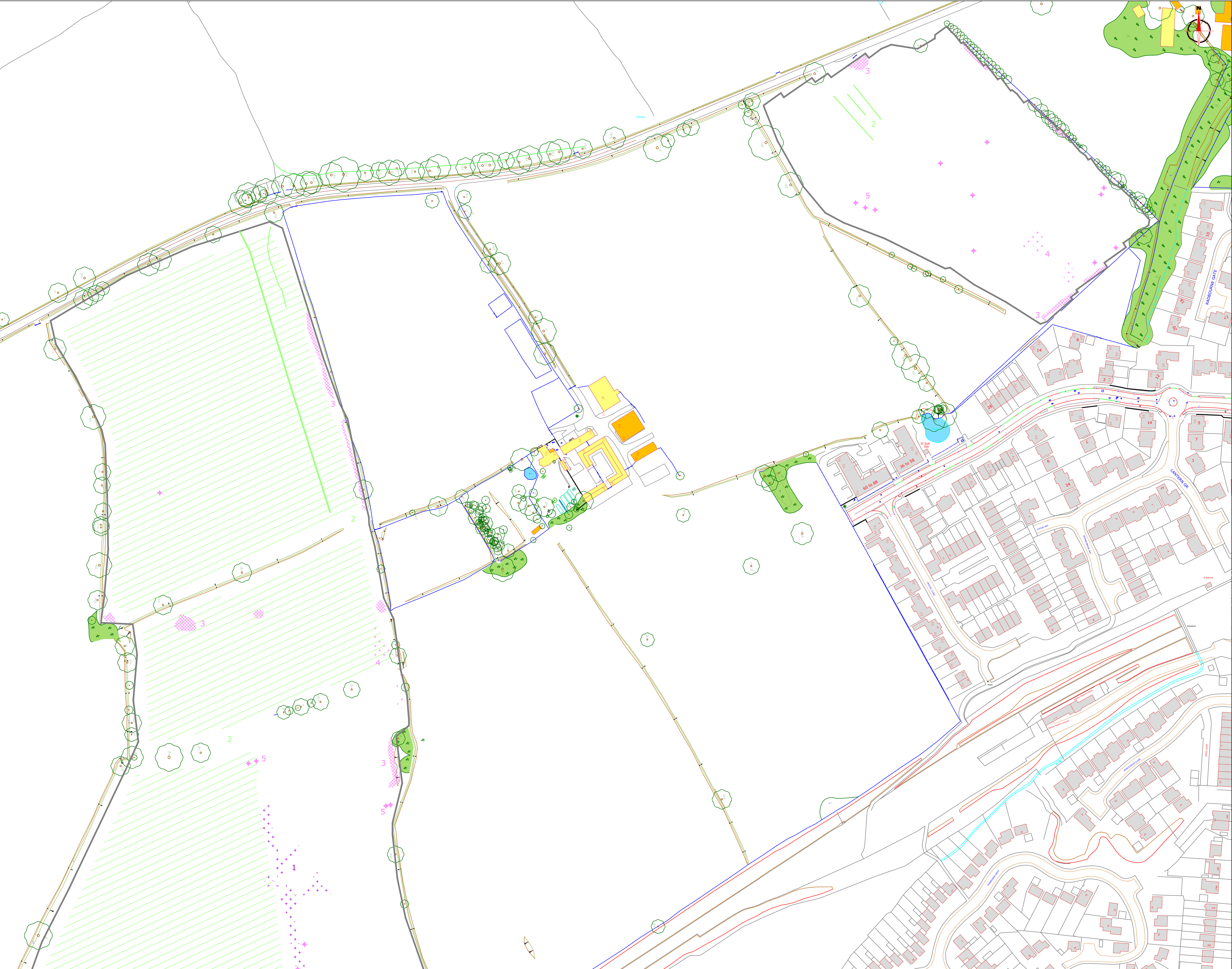
Checked by
DGE

Issue No.
P1

Date
JAN 2014

Drawn by
OJP

Figure No.
05



Amendments	
Issue No.	Date
-	-
-	-
© Stratascan Ltd - 2014	

KEY

PROBABLE ARCHAEOLOGY

- Positive anomaly / weak positive anomaly - probable cut feature of archaeological origin
- Negative anomaly / weak negative anomaly - probable bank or earthwork of archaeological origin
- Moderate strength discrete anomaly - probable thermoremanent feature
- Widely spaced curving parallel linear anomalies - probably related to ridge-and-furrow

POSSIBLE ARCHAEOLOGY

- Positive anomaly / weak positive anomaly - possible cut feature of archaeological origin
- Negative anomaly / weak negative anomaly - possible bank or earthwork of archaeological origin
- Scattered magnetic debris related to historic field boundary (visible on 1901 historic mapping)
- Magnetic spike - probable ferrous object

OTHER ANOMALIES

- Closely spaced parallel linear anomalies - probably related to agricultural activity such as ploughing
- Linear anomaly - probably related to pipe, cable or other modern service
- Linear anomaly - possibly related to land drain
- Magnetic disturbance associated with nearby metal object such as service or field boundary
- Strong magnetic debris - possible disturbed or made ground
- Scattered magnetic debris
- Area of amorphous magnetic variation - probable natural (e.g. geological or pedological) origin

Job No.

6366

Survey Date

JAN 2014

Client

CgMs CONSULTING LTD.

Project Title

HACKWOOD FARM,
RADBOURNE, DERBYSHIRE

Subject

INTERPRETATION

STRATASCANTM
GEOPHYSICS FOR ARCHAEOLOGY
AND ENGINEERING
VINEYARD HOUSE
UPTON UPON SEVERN
WR8 0SA
T: 01684 592266
E: info@stratascan.co.uk
www.stratascan.co.uk

**EUROPEAN
GPR
ASSOCIATION**

**SUMO
GROUP
MEMBER**

IMS
ISO 9001
certified

UKAS
QUALITY
MANAGEMENT
SYSTEMS

IMS
ISO 14001
certified

UKAS
ENVIRONMENTAL
MANAGEMENT
SYSTEMS

Scale

0m 10 20 30 40 50 60 70 80m

1:1250

Plot

A1

Checked by

DGE

Issue No.

P1

Date

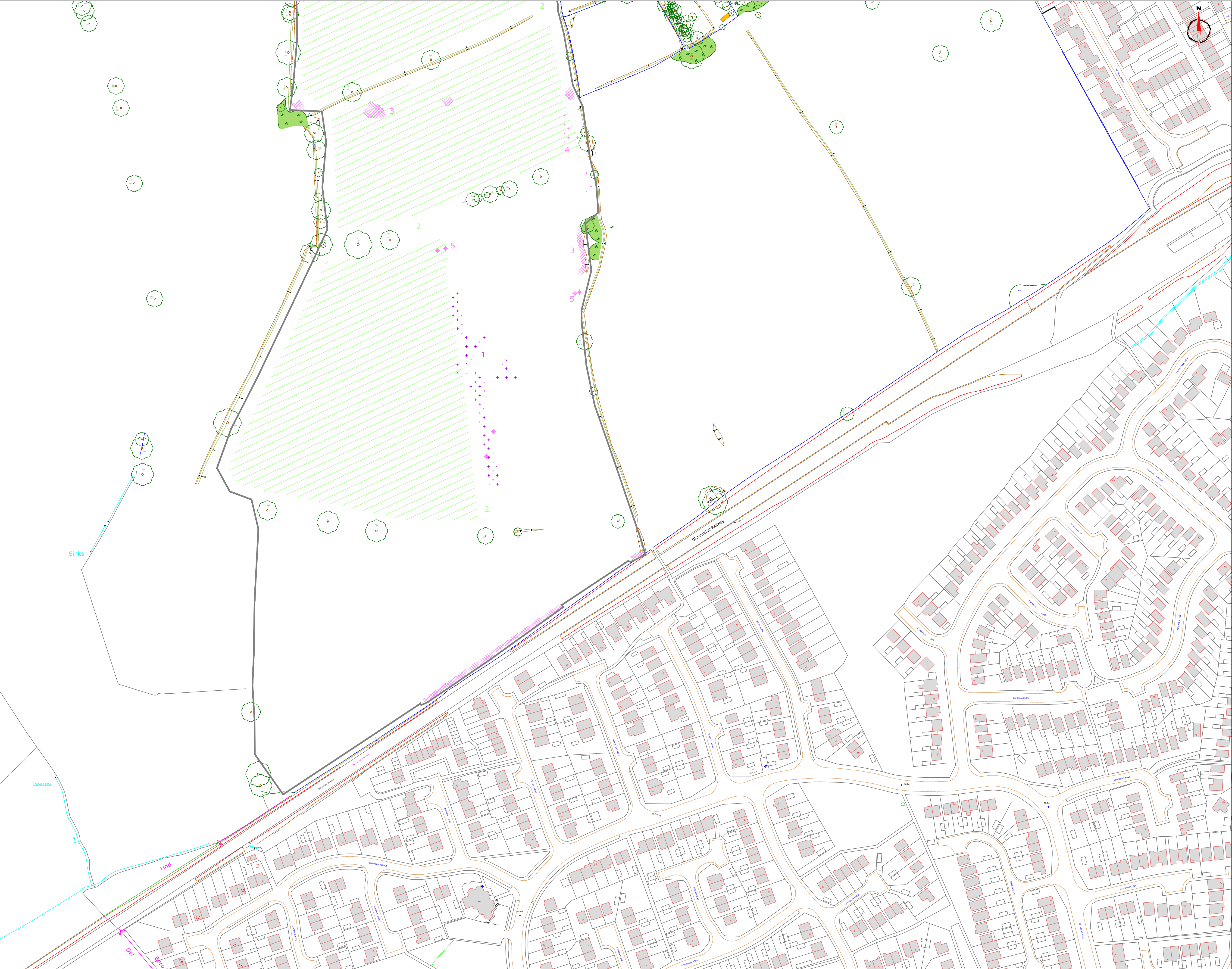
JAN 2014

Drawn by

OJP

Figure No.

06



Amendments	
Issue No.	Date
-	-
-	-
© Stratascan Ltd - 2014	

KEY

PROBABLE ARCHAEOLOGY

- Positive anomaly / weak positive anomaly - probable cut feature of archaeological origin
- Negative anomaly / weak negative anomaly - probable bank or earthwork of archaeological origin
- Moderate strength discrete anomaly - probable thermoremanent feature
- Widely spaced curving parallel linear anomalies - probably related to ridge-and-furrow

POSSIBLE ARCHAEOLOGY

- Positive anomaly / weak positive anomaly - possible cut feature of archaeological origin
- Negative anomaly / weak negative anomaly - possible bank or earthwork of archaeological origin
- Scattered magnetic debris related to historic field boundary (visible on 1901 historic mapping)
- Magnetic spike - probable ferrous object

OTHER ANOMALIES

- Closely spaced parallel linear anomalies - probably related to agricultural activity such as ploughing
- Linear anomaly - probably related to pipe, cable or other modern service
- Linear anomaly - possibly related to land drain
- Magnetic disturbance associated with nearby metal object such as service or field boundary
- Strong magnetic debris - possible disturbed or made ground
- Scattered magnetic debris
- Area of amorphous magnetic variation - probable natural (e.g. geological or pedological) origin

Job No.	6366	Survey Date	JAN 2014
Client			
CgMs CONSULTING LTD.			
Project Title			
HACKWOOD FARM, RADBOURNE, DERBYSHIRE			
Subject			
INTERPRETATION			

STRATASCANTM
GEOPHYSICS FOR ARCHAEOLOGY
AND ENGINEERING
VINEYARD HOUSE
UPTON UPON SEVERN
WR8 0SA
T: 01684 592266
E: info@stratascan.co.uk
www.stratascan.co.uk

GPR
ASSOCIATION
SUMO
GROUP MEMBER

Scale

0m 10 20 30 40 50 60 70 80m

1:1250

Plot	A1	Checked by	DGE	Issue No.	P1
Date	JAN 2014	Drawn by	OJP	Figure No.	07