

Reproduced from Ordnance Survey's 1:25 000 map of 1998 with the permission of the controller of Her Majesty's Stationery Office. Crown Copyright reserved. Licence No: AL 50125A
Licencee:
Stratascan Ltd.
Vineyard House
Upper Hook Road
Upton Upon Severn
WR8 0SA
OS 100km square = TF



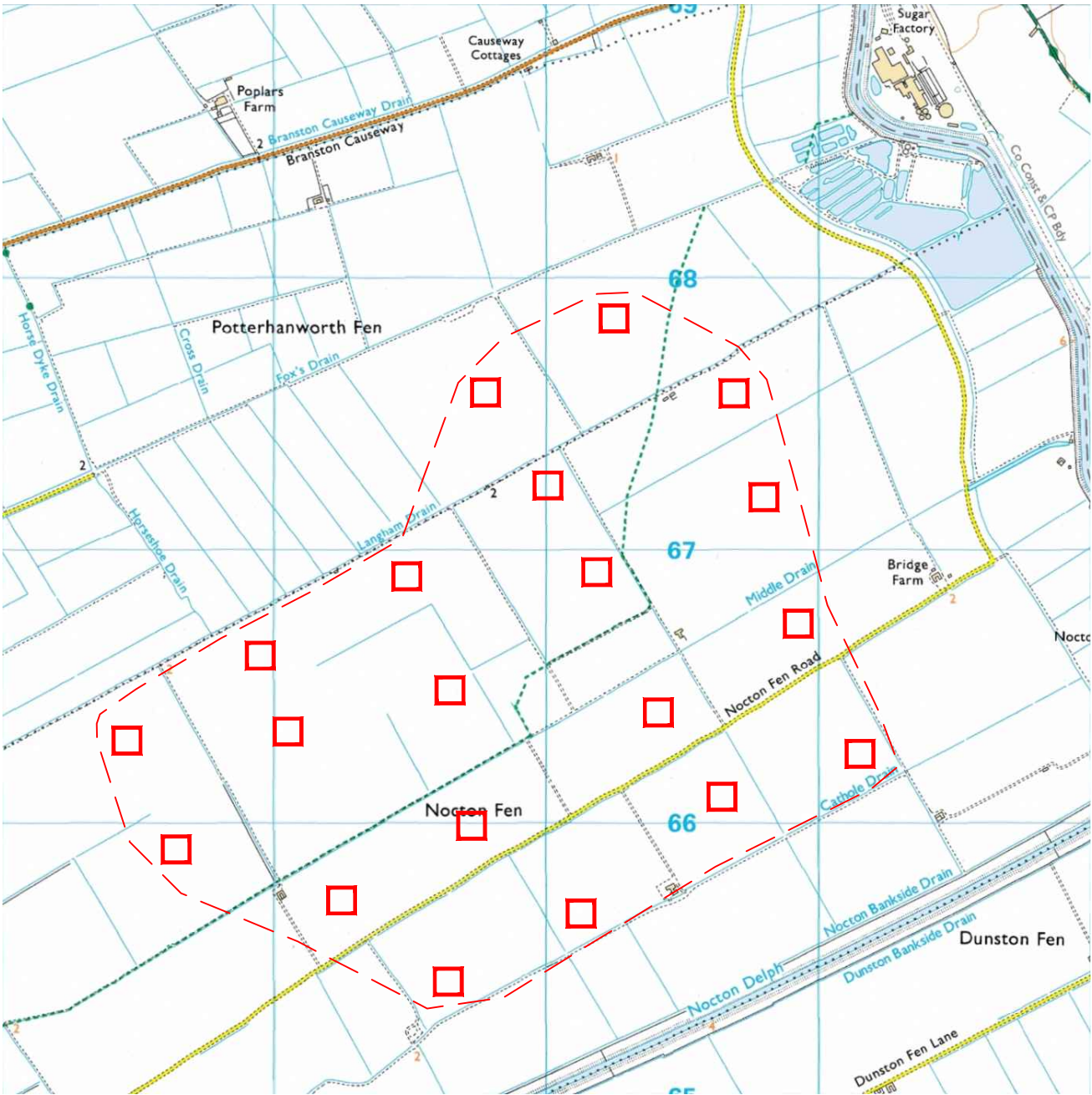
69

68

67

66

65



08

09

10

11

12

Amendments

Issue No.	Date	Description
-	-	-
-	-	-

© Stratascan Ltd - 2014

Site centred on NGR **TF 100 665**

Client
CgMs CONSULTING LTD

Project Title **GEOPHYSICAL SURVEY - NOCTON FEN, NEAR BARDNEY, LINCOLNSHIRE** Job No. **7405**

Subject
LOCATION PLAN OF SURVEY AREA

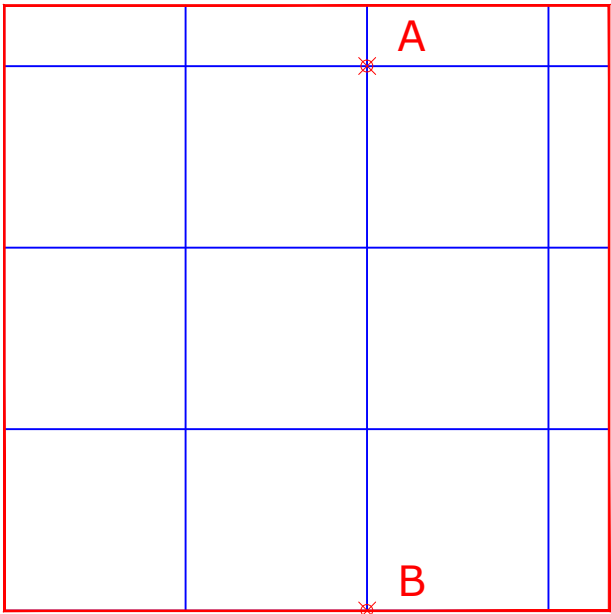
STRATASCAN™
GEOPHYSICS FOR ARCHAEOLOGY AND ENGINEERING
VINEYARD HOUSE T: 01684 592266
UPTON UPON SEVERN E: info@stratascan.co.uk
WR8 0SA www.stratascan.co.uk

EUROPEAN GPR ASSOCIATION
sumo SUMO GROUP MEMBER
ISO 9001 certified ISO 14001 certified

Scale **1:25000** 0m 500 1000m

Plot A3	Checked by DGE	Issue No. 01
Survey date SEPT 14	Drawn by RD	Figure No. 01

LOCATION OF SURVEY
GRIDS AND REFERENCING

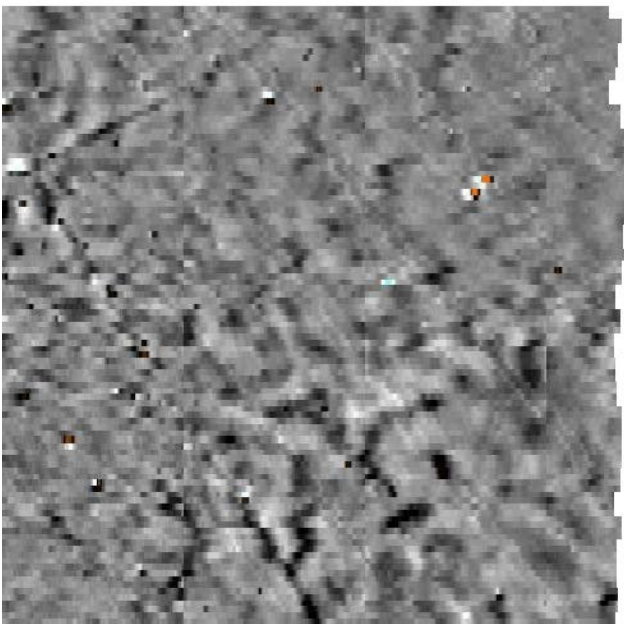


OS GRID REFERENCES

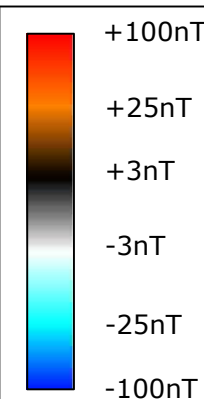
A	510293.00, 367819.00
B	510293.00, 367729.00



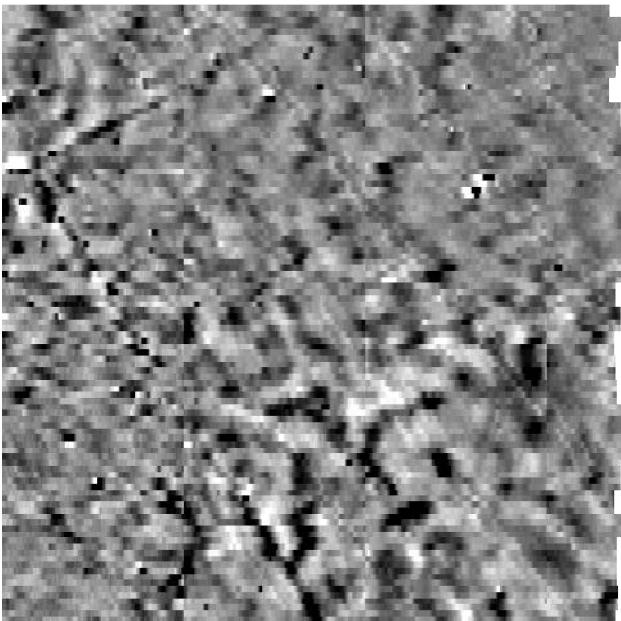
GRADIOMETER DATA
SHOWING EXTREME VALUES



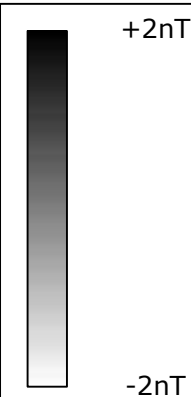
AREA 1



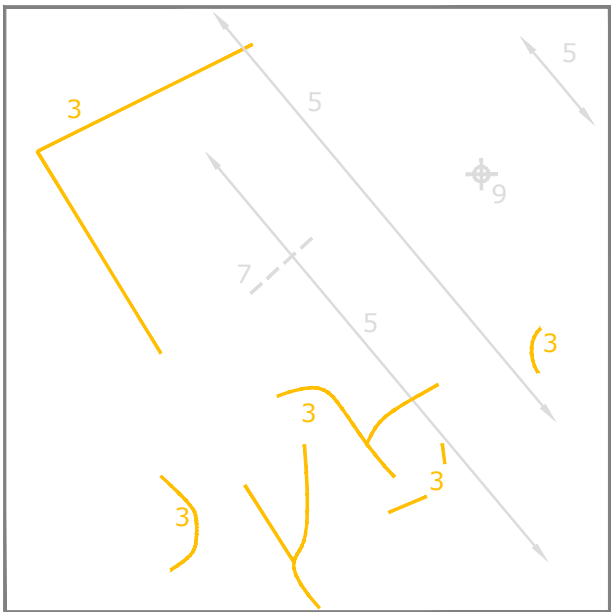
MINIMALLY PROCESSED
GRADIOMETER DATA



AREA 1



ABSTRACTION AND INTERPRETATION
OF GRADIOMETER ANOMALIES



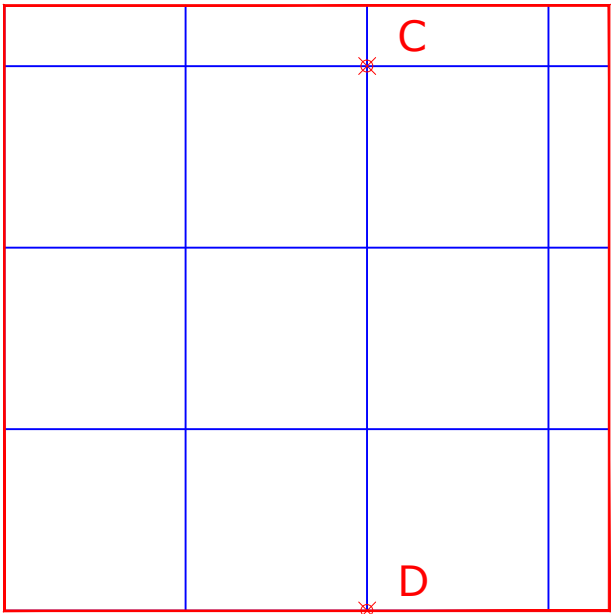
AREA 1



Amendments

Issue No.	Date	Description
-	-	-
-	-	-
© Stratascan Ltd - 2014		
KEY		
PROBABLE ARCHAEOLOGY		
	Positive anomaly / weak positive anomaly - probable cut feature of archaeological origin	
	Negative anomaly / weak negative anomaly - probable bank or earthwork of archaeological origin	
	Widely spaced curving parallel linear anomalies - probably related to ridge-and-furrow	
	Linear anomaly related to former field boundary visible on mapping from 1888 to 1956	
	Linear anomaly related to former field boundary not visible on available mapping	
POSSIBLE ARCHAEOLOGY		
	Positive anomaly / weak positive anomaly - possible cut feature of archaeological origin	
	Negative anomaly / weak negative anomaly - possible bank or earthwork of archaeological origin	
	Linear anomaly - Possible former field boundary	
OTHER ANOMALIES		
	Closely spaced parallel linear anomalies - related to agricultural activity such as ploughing or drains	
	Linear anomaly - possibly related to land drain	
	Magnetic disturbance associated with nearby metal object such as service or field boundary	
	Strong magnetic debris - possible disturbed or made ground	
	Scattered magnetic debris	
	Area of amorphous magnetic variation - probable natural (e.g. geological or pedological) origin	
	Magnetic spike - probable ferrous object	
Client		
CgMs CONSULTING LTD		
Project Title		Job No. 7405
GEOPHYSICAL SURVEY - NOCTON FEN, NEAR BARDNEY, LINCOLNSHIRE		
Subject		
AREA 1		
GEOPHYSICS FOR ARCHAEOLOGY AND ENGINEERING		
VINEYARD HOUSE UPTON UPON SEVERN WR8 0SA		T: 01684 592266 E: info@stratascan.co.uk www.stratascan.co.uk
SUMO GROUP MEMBER		
Scale		
1:1250		
Plot	Checked by	Issue No.
A3	DGE	01
Survey date	Drawn by	Figure No.
SEPT 14	MU	03

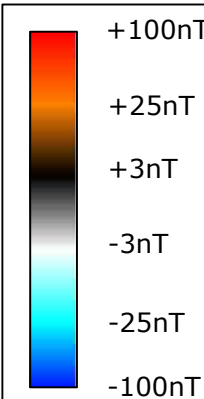
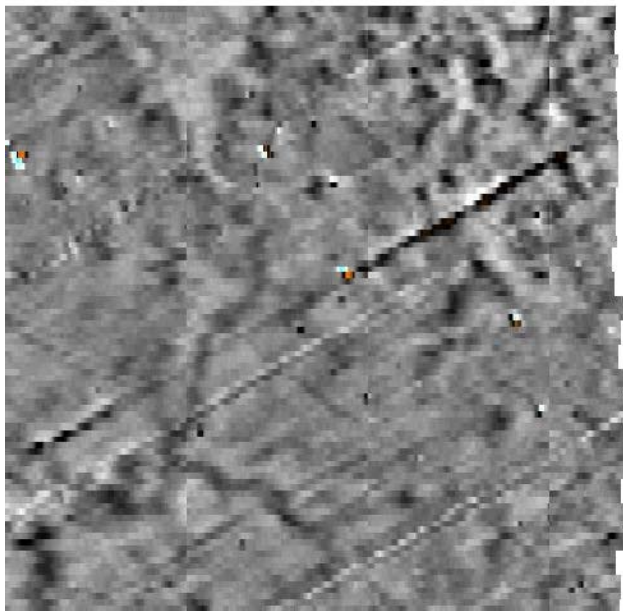
LOCATION OF SURVEY
GRIDS AND REFERENCING



OS GRID REFERENCES

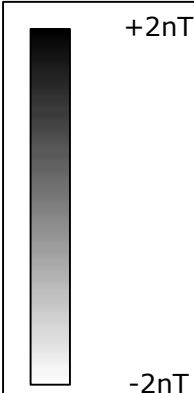
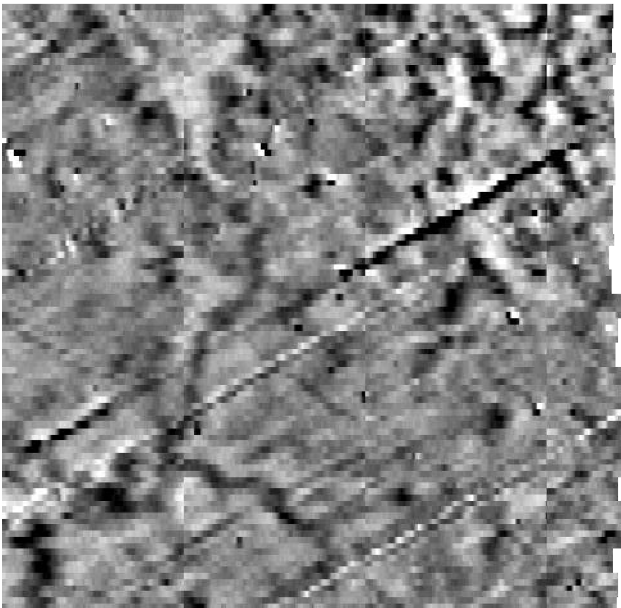
C	510724.00, 367620.00
D	510724.00, 367530.00

GRADIOMETER DATA
SHOWING EXTREME VALUES



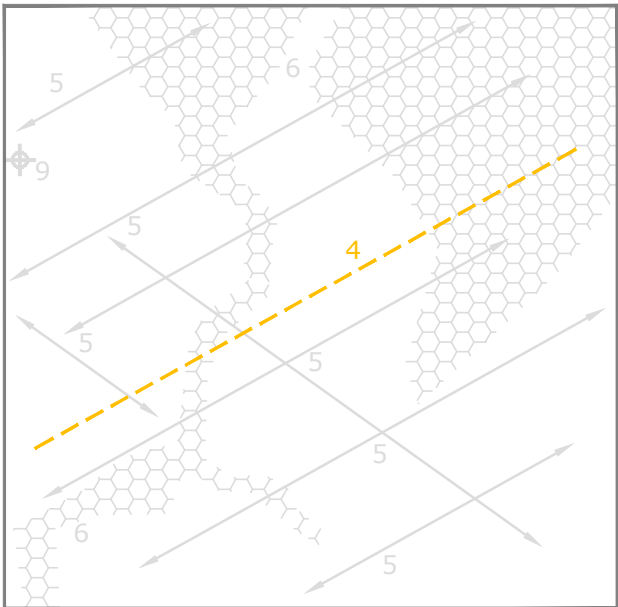
AREA 2

MINIMALLY PROCESSED
GRADIOMETER DATA



AREA 2

ABSTRACTION AND INTERPRETATION
OF GRADIOMETER ANOMALIES



AREA 2

Amendments

Issue No.	Date	Description
-	-	-
-	-	-

© Stratascan Ltd - 2014

KEY

PROBABLE ARCHAEOLOGY

	Positive anomaly / weak positive anomaly - probable cut feature of archaeological origin
	Negative anomaly / weak negative anomaly - probable bank or earthwork of archaeological origin
	Widely spaced curving parallel linear anomalies - probably related to ridge-and-furrow
	Linear anomaly related to former field boundary visible on mapping from 1888 to 1956
	Linear anomaly related to former field boundary not visible on available mapping

POSSIBLE ARCHAEOLOGY

	Positive anomaly / weak positive anomaly - possible cut feature of archaeological origin
	Negative anomaly / weak negative anomaly - possible bank or earthwork of archaeological origin
	Linear anomaly - Possible former field boundary

OTHER ANOMALIES

	Closely spaced parallel linear anomalies - related to agricultural activity such as ploughing or drains
	Linear anomaly - possibly related to land drain
	Magnetic disturbance associated with nearby metal object such as service or field boundary
	Strong magnetic debris - possible disturbed or made ground
	Scattered magnetic debris
	Area of amorphous magnetic variation - probable natural (e.g. geological or pedological) origin
	Magnetic spike - probable ferrous object

Client
CgMs CONSULTING LTD

Project Title
GEOPHYSICAL SURVEY - NOCTON FEN, NEAR BARDNEY, LINCOLNSHIRE

Job No. 7405

Subject
AREA 2

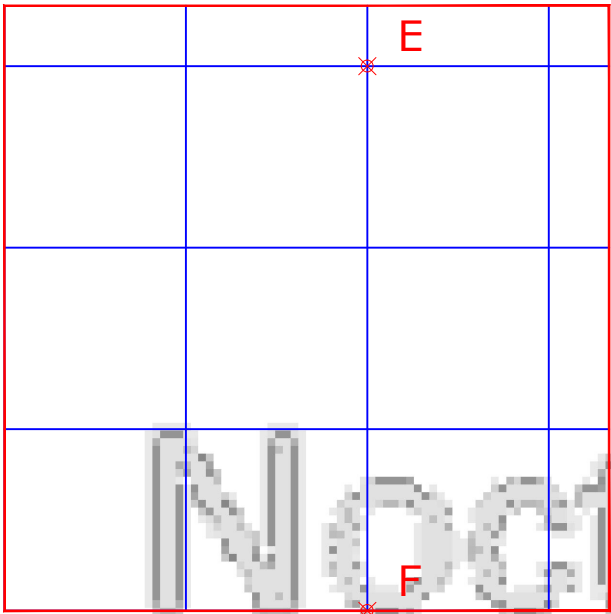
STRATASCAN™
GEOPHYSICS FOR ARCHAEOLOGY AND ENGINEERING
VINEYARD HOUSE T: 01684 592266
UPTON UPON SEVERN E: info@stratascan.co.uk
WR8 0SA www.stratascan.co.uk



Scale
1:1250
0m 10 20 30 40 50m

Plot A3	Checked by DGE	Issue No. 01
Survey date SEPT 14	Drawn by MU	Figure No. 04

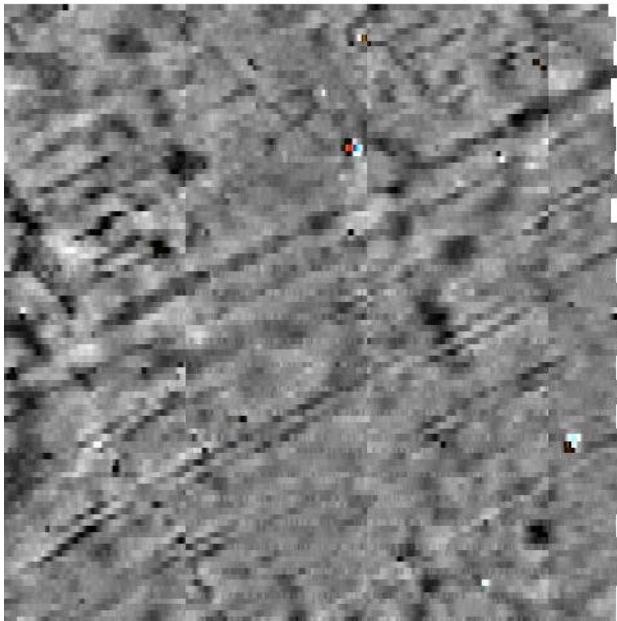
LOCATION OF SURVEY
GRIDS AND REFERENCING



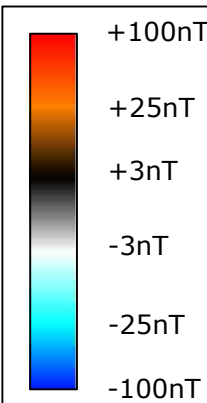
OS GRID REFERENCES

E	510895.00, 366742.00
F	510895.00, 366652.00

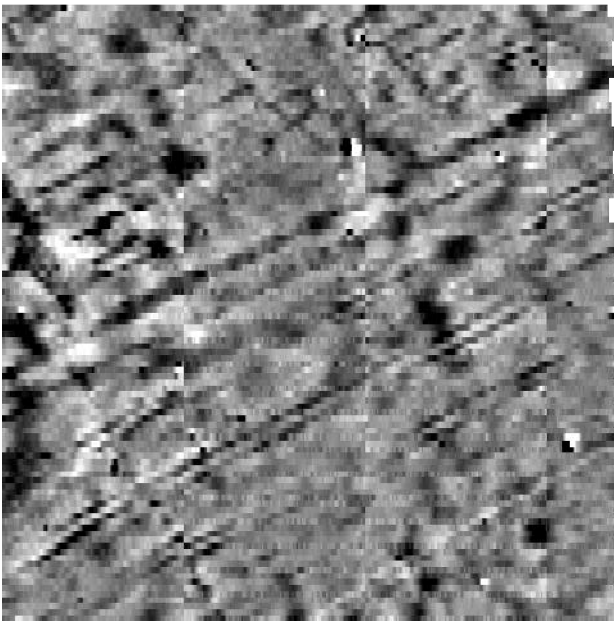
GRADIOMETER DATA
SHOWING EXTREME VALUES



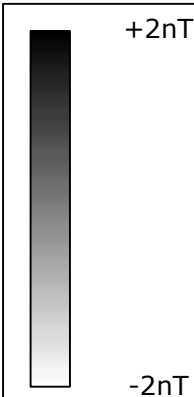
AREA 4



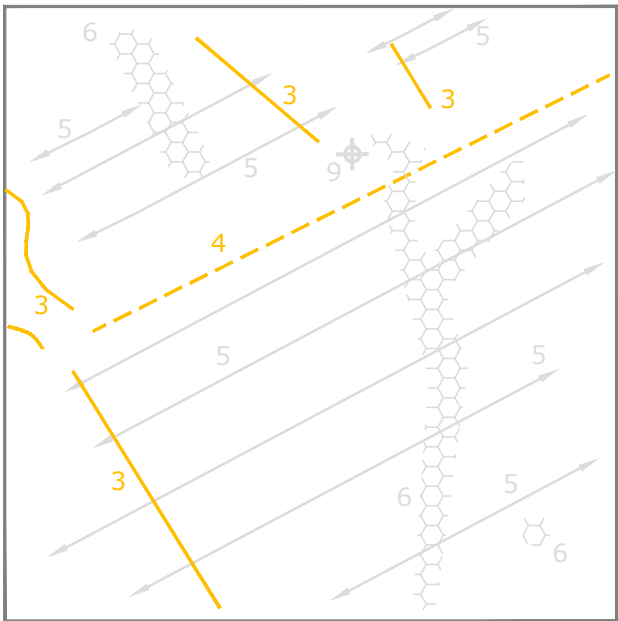
MINIMALLY PROCESSED
GRADIOMETER DATA



AREA 4



ABSTRACTION AND INTERPRETATION
OF GRADIOMETER ANOMALIES



AREA 4

Amendments

Issue No.	Date	Description
-	-	-
-	-	-

© Stratascan Ltd - 2014

KEY

PROBABLE ARCHAEOLOGY

	Positive anomaly / weak positive anomaly - probable cut feature of archaeological origin
	Negative anomaly / weak negative anomaly - probable bank or earthwork of archaeological origin
	Widely spaced curving parallel linear anomalies - probably related to ridge-and-furrow
	Linear anomaly related to former field boundary visible on mapping from 1888 to 1956
	Linear anomaly related to former field boundary not visible on available mapping

POSSIBLE ARCHAEOLOGY

	Positive anomaly / weak positive anomaly - possible cut feature of archaeological origin
	Negative anomaly / weak negative anomaly - possible bank or earthwork of archaeological origin
	Linear anomaly - Possible former field boundary

OTHER ANOMALIES

	Closely spaced parallel linear anomalies - related to agricultural activity such as ploughing or drains
	Linear anomaly - possibly related to land drain
	Magnetic disturbance associated with nearby metal object such as service or field boundary
	Strong magnetic debris - possible disturbed or made ground
	Scattered magnetic debris
	Area of amorphous magnetic variation - probable natural (e.g. geological or pedological) origin
	Magnetic spike - probable ferrous object

Client
CgMs CONSULTING LTD

Project Title
GEOPHYSICAL SURVEY - NOCTON FEN, NEAR BARDNEY, LINCOLNSHIRE

Job No. 7405
Subject
AREA 4

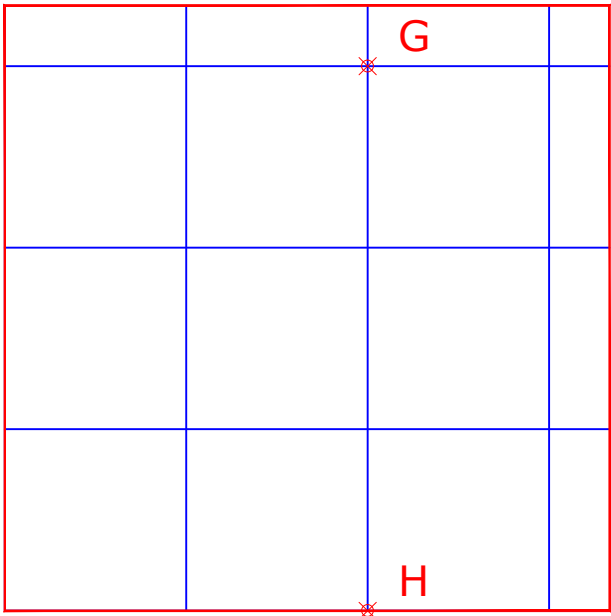
STRATASCAN™
GEOPHYSICS FOR ARCHAEOLOGY AND ENGINEERING
VINEYARD HOUSE T: 01684 592266
UPTON UPON SEVERN E: info@stratascan.co.uk
WR8 0SA www.stratascan.co.uk



Scale
1:1250
0m 10 20 30 40 50m

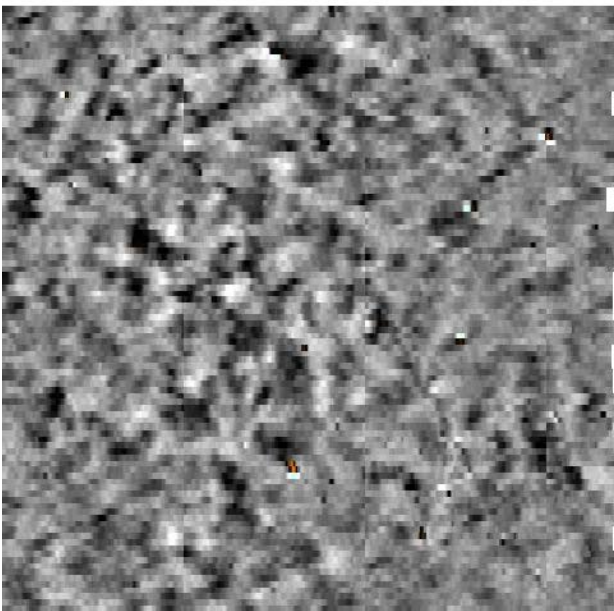
Plot A3	Checked by DGE	Issue No. 01
Survey date SEPT 14	Drawn by MU	Figure No. 05

LOCATION OF SURVEY
GRIDS AND REFERENCING

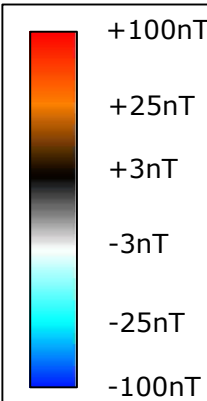


OS GRID REFERENCES	
G	511141.00, 366275.00
H	511141.00, 366185.00

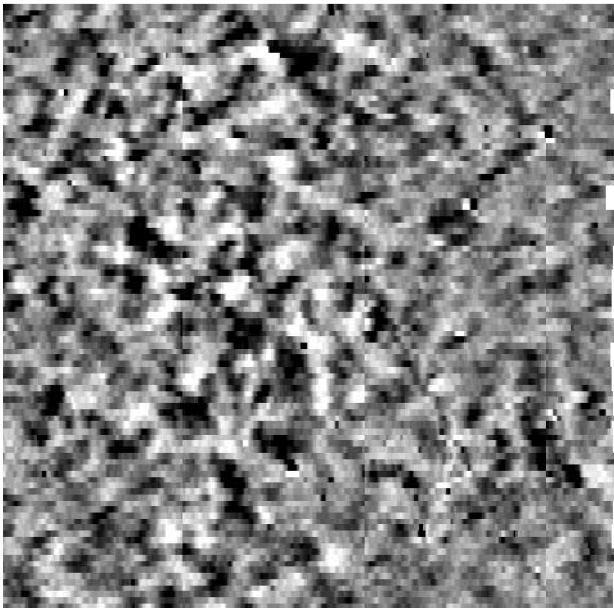
GRADIOMETER DATA
SHOWING EXTREME VALUES



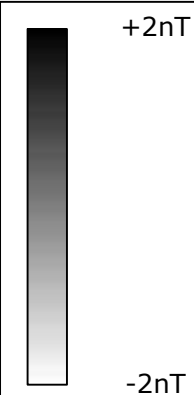
AREA 5



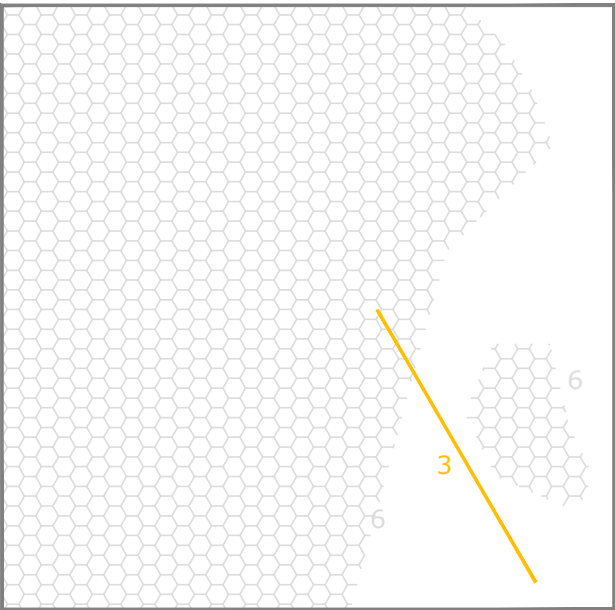
MINIMALLY PROCESSED
GRADIOMETER DATA



AREA 5



ABSTRACTION AND INTERPRETATION
OF GRADIOMETER ANOMALIES



AREA 5

Amendments

Issue No.	Date	Description
-	-	-
-	-	-

© Stratascan Ltd - 2014

KEY

PROBABLE ARCHAEOLOGY

	Positive anomaly / weak positive anomaly - probable cut feature of archaeological origin
	Negative anomaly / weak negative anomaly - probable bank or earthwork of archaeological origin
	Widely spaced curving parallel linear anomalies - probably related to ridge-and-furrow
	Linear anomaly related to former field boundary visible on mapping from 1888 to 1956
	Linear anomaly related to former field boundary not visible on available mapping

POSSIBLE ARCHAEOLOGY

	Positive anomaly / weak positive anomaly - possible cut feature of archaeological origin
	Negative anomaly / weak negative anomaly - possible bank or earthwork of archaeological origin
	Linear anomaly - Possible former field boundary

OTHER ANOMALIES

	Closely spaced parallel linear anomalies - related to agricultural activity such as ploughing or drains
	Linear anomaly - possibly related to land drain
	Magnetic disturbance associated with nearby metal object such as service or field boundary
	Strong magnetic debris - possible disturbed or made ground
	Scattered magnetic debris
	Area of amorphous magnetic variation - probable natural (e.g. geological or pedological) origin
	Magnetic spike - probable ferrous object

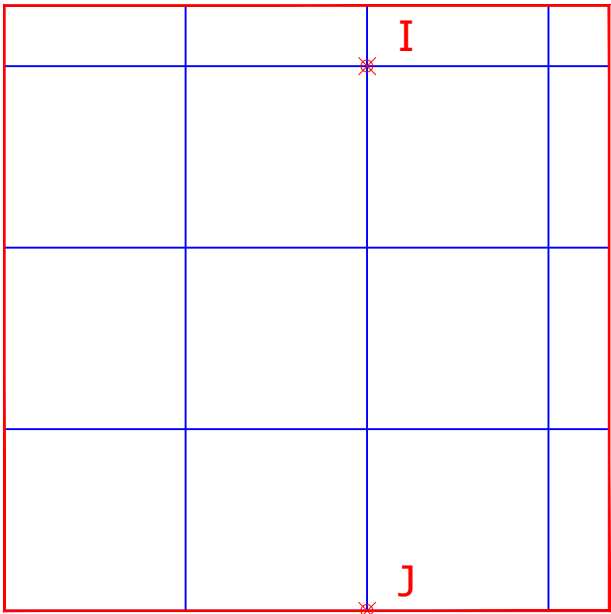
Client	
CgMs CONSULTING LTD	
Project Title	Job No. 7405
GEOPHYSICAL SURVEY - NOCTON FEN, NEAR BARDNEY, LINCOLNSHIRE	
Subject	
AREA 5	

STRATASCAN™
GEOPHYSICS FOR ARCHAEOLOGY
AND ENGINEERING
VINEYARD HOUSE T: 01684 592266
UPTON UPON SEVERN E: info@stratascan.co.uk
WR8 0SA www.stratascan.co.uk

GPR ASSOCIATION
SUMO SURVEY SERVICES
SUMO GROUP MEMBER
UKAS ISO 9001 certified
UKAS ISO 14001 certified

Scale	1:1250	
Plot	A3	Issue No. 01
Survey date	SEPT 14	Figure No. 06

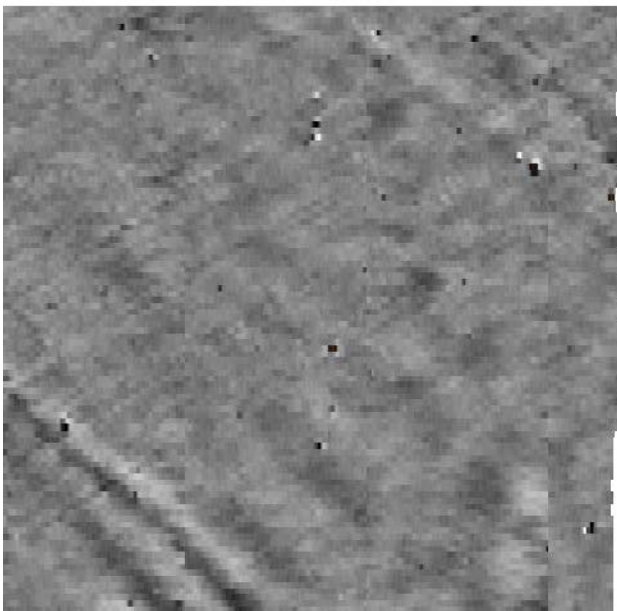
LOCATION OF SURVEY
GRIDS AND REFERENCING



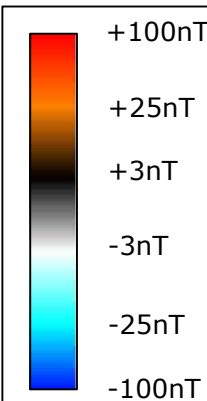
OS GRID REFERENCES

I	509739.00, 367570.00
J	509739.00, 367480.00

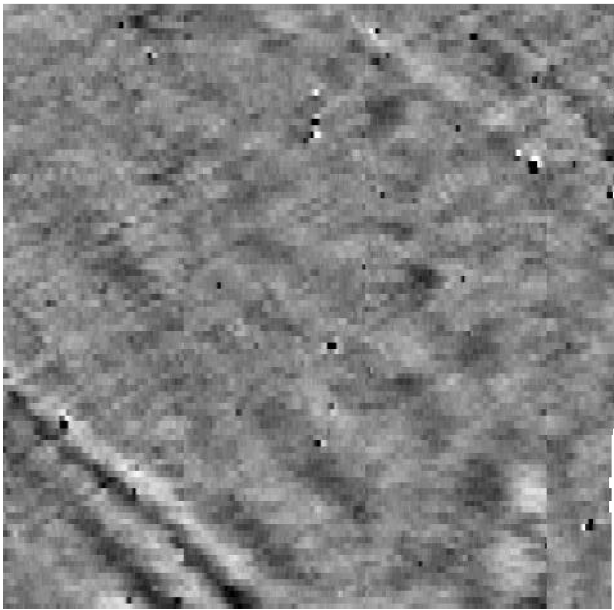
GRADIOMETER DATA
SHOWING EXTREME VALUES



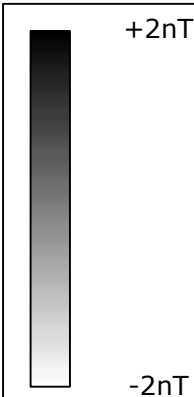
AREA 6



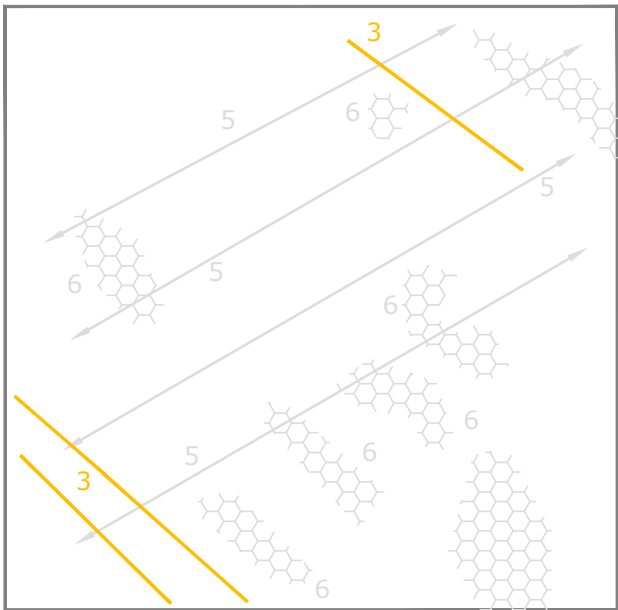
MINIMALLY PROCESSED
GRADIOMETER DATA



AREA 6



ABSTRACTION AND INTERPRETATION
OF GRADIOMETER ANOMALIES

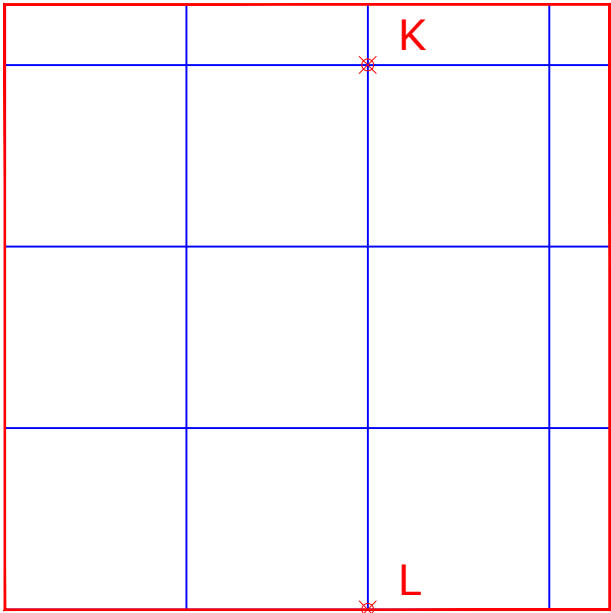


AREA 6

Amendments

Issue No.	Date	Description
-	-	-
-	-	-
© Stratascan Ltd - 2014		
KEY		
PROBABLE ARCHAEOLOGY		
	Positive anomaly / weak positive anomaly - probable cut feature of archaeological origin	
	Negative anomaly / weak negative anomaly - probable bank or earthwork of archaeological origin	
	Widely spaced curving parallel linear anomalies - probably related to ridge-and-furrow	
	Linear anomaly related to former field boundary visible on mapping from 1888 to 1956	
	Linear anomaly related to former field boundary not visible on available mapping	
POSSIBLE ARCHAEOLOGY		
	Positive anomaly / weak positive anomaly - possible cut feature of archaeological origin	
	Negative anomaly / weak negative anomaly - possible bank or earthwork of archaeological origin	
	Linear anomaly - Possible former field boundary	
OTHER ANOMALIES		
	Closely spaced parallel linear anomalies - related to agricultural activity such as ploughing or drains	
	Linear anomaly - possibly related to land drain	
	Magnetic disturbance associated with nearby metal object such as service or field boundary	
	Strong magnetic debris - possible disturbed or made ground	
	Scattered magnetic debris	
	Area of amorphous magnetic variation - probable natural (e.g. geological or pedological) origin	
	Magnetic spike - probable ferrous object	
Client		
CgMs CONSULTING LTD		
Project Title		Job No. 7405
GEOPHYSICAL SURVEY - NOCTON FEN, NEAR BARDNEY, LINCOLNSHIRE		
Subject		
AREA 6		
GEOPHYSICS FOR ARCHAEOLOGY AND ENGINEERING		
VINEYARD HOUSE UPTON UPON SEVERN WR8 0SA		T: 01684 592266 E: info@stratascan.co.uk www.stratascan.co.uk
SUMO GROUP MEMBER		
Scale		
1:1250		
Plot	Checked by	Issue No.
A3	DGE	01
Survey date	Drawn by	Figure No.
SEPT 14	MU	07

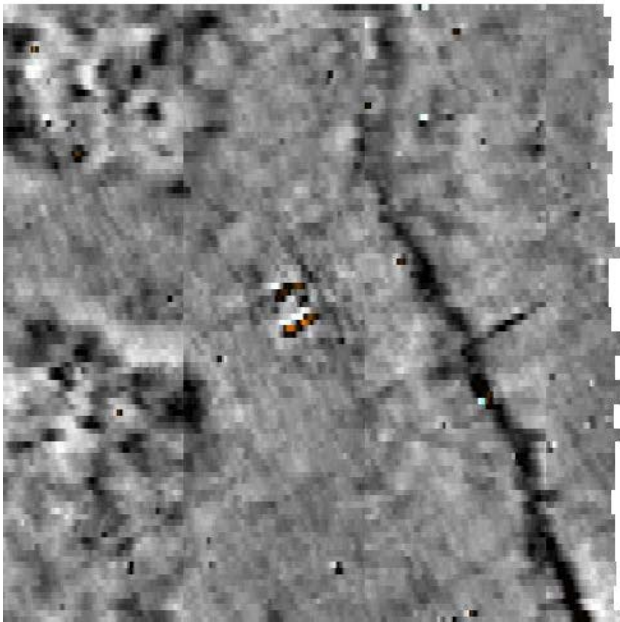
LOCATION OF SURVEY
GRIDS AND REFERENCING



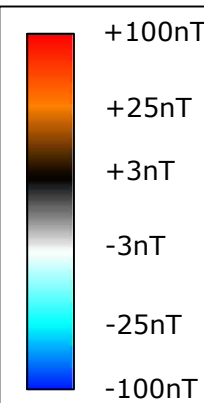
OS GRID REFERENCES

K	510001.00, 367242.00
L	510001.00, 367152.00

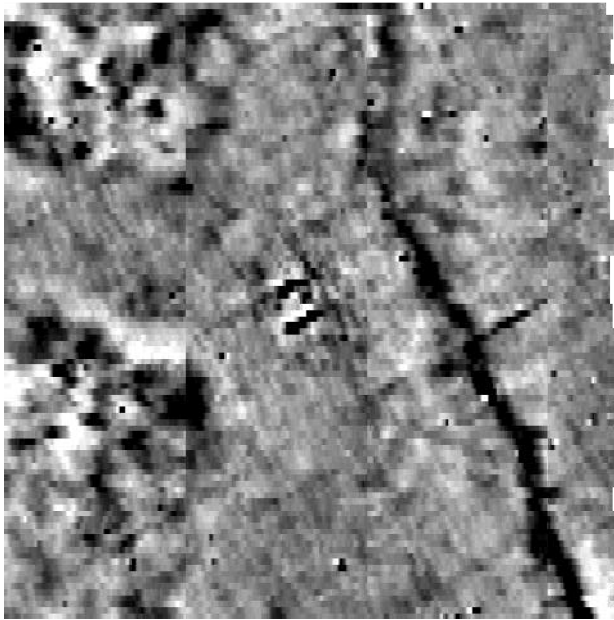
GRADIOMETER DATA
SHOWING EXTREME VALUES



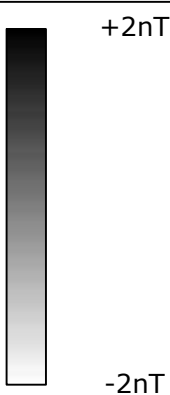
AREA 7



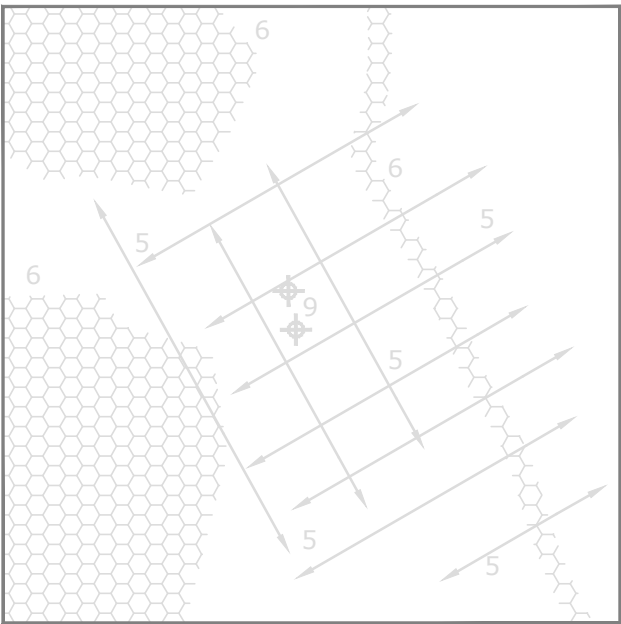
MINIMALLY PROCESSED
GRADIOMETER DATA



AREA 7



ABSTRACTION AND INTERPRETATION
OF GRADIOMETER ANOMALIES



AREA 7

Amendments

Issue No.	Date	Description
-	-	-
-	-	-

© Stratascan Ltd - 2014

KEY

PROBABLE ARCHAEOLOGY

	Positive anomaly / weak positive anomaly - probable cut feature of archaeological origin
	Negative anomaly / weak negative anomaly - probable bank or earthwork of archaeological origin
	Widely spaced curving parallel linear anomalies - probably related to ridge-and-furrow
	Linear anomaly related to former field boundary visible on mapping from 1888 to 1956
	Linear anomaly related to former field boundary not visible on available mapping

POSSIBLE ARCHAEOLOGY

	Positive anomaly / weak positive anomaly - possible cut feature of archaeological origin
	Negative anomaly / weak negative anomaly - possible bank or earthwork of archaeological origin
	Linear anomaly - Possible former field boundary

OTHER ANOMALIES

	Closely spaced parallel linear anomalies - related to agricultural activity such as ploughing or drains
	Linear anomaly - possibly related to land drain
	Magnetic disturbance associated with nearby metal object such as service or field boundary
	Strong magnetic debris - possible disturbed or made ground
	Scattered magnetic debris
	Area of amorphous magnetic variation - probable natural (e.g. geological or pedological) origin
	Magnetic spike - probable ferrous object

Client
CgMs CONSULTING LTD

Project Title
GEOPHYSICAL SURVEY - NOCTON FEN, NEAR BARDNEY, LINCOLNSHIRE

Subject
AREA 7

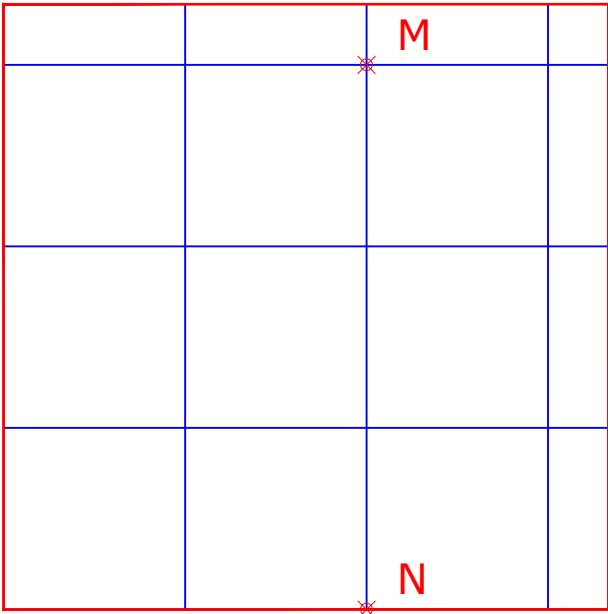
STRATASCAN
GEOPHYSICS FOR ARCHAEOLOGY
AND ENGINEERING
VINEYARD HOUSE T: 01684 592266
UPTON UPON SEVERN E: info@stratascan.co.uk
WR8 0SA www.stratascan.co.uk

EUROPEAN GPR ASSOCIATION
SUMO SUMO GROUP MEMBER
ISO 9001 certified UKAS ISO 14001 certified

Scale
1:1250 0m 10 20 30 40 50m

Plot A3	Checked by DGE	Issue No. 01
Survey date SEPT 14	Drawn by MU	Figure No. 08

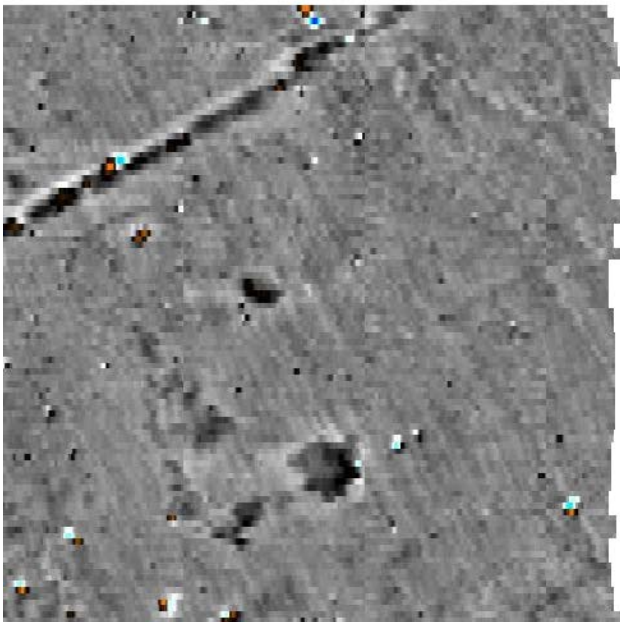
LOCATION OF SURVEY
GRIDS AND REFERENCING



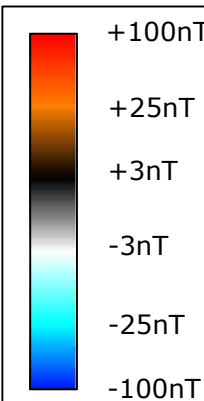
OS GRID REFERENCES

M	510178.00, 366882.00
N	510178.00, 366792.00

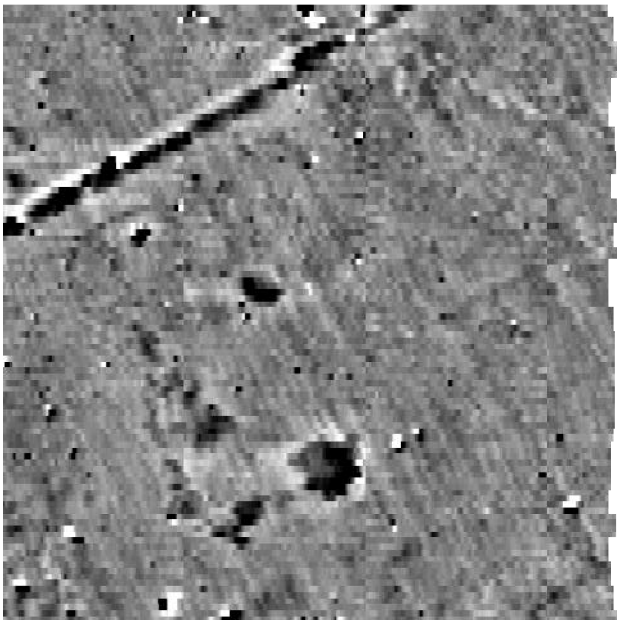
GRADIOMETER DATA
SHOWING EXTREME VALUES



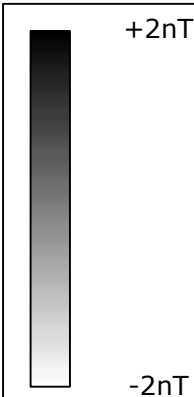
AREA 8



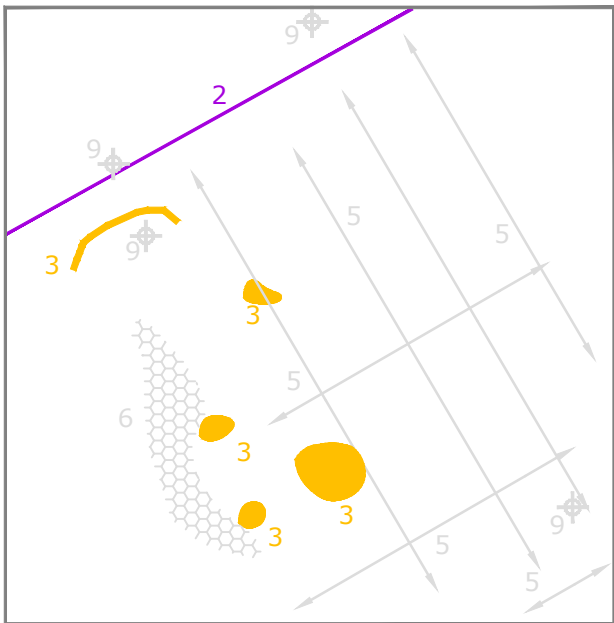
MINIMALLY PROCESSED
GRADIOMETER DATA



AREA 8



ABSTRACTION AND INTERPRETATION
OF GRADIOMETER ANOMALIES

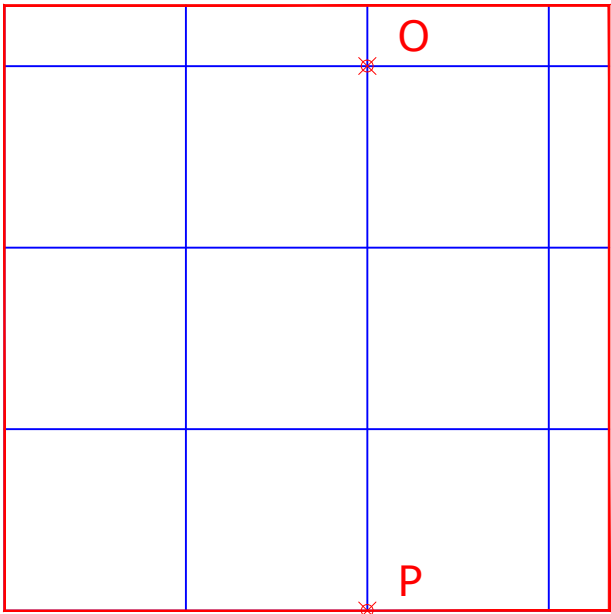


AREA 8

Amendments

Issue No.	Date	Description
-	-	-
-	-	-
© Stratascan Ltd - 2014		
KEY		
PROBABLE ARCHAEOLOGY		
	Positive anomaly / weak positive anomaly - probable cut feature of archaeological origin	
	Negative anomaly / weak negative anomaly - probable bank or earthwork of archaeological origin	
	Widely spaced curving parallel linear anomalies - probably related to ridge-and-furrow	
	Linear anomaly related to former field boundary visible on mapping from 1888 to 1956	
	Linear anomaly related to former field boundary not visible on available mapping	
POSSIBLE ARCHAEOLOGY		
	Positive anomaly / weak positive anomaly - possible cut feature of archaeological origin	
	Negative anomaly / weak negative anomaly - possible bank or earthwork of archaeological origin	
	Linear anomaly - Possible former field boundary	
OTHER ANOMALIES		
	Closely spaced parallel linear anomalies - related to agricultural activity such as ploughing or drains	
	Linear anomaly - possibly related to land drain	
	Magnetic disturbance associated with nearby metal object such as service or field boundary	
	Strong magnetic debris - possible disturbed or made ground	
	Scattered magnetic debris	
	Area of amorphous magnetic variation - probable natural (e.g. geological or pedological) origin	
	Magnetic spike - probable ferrous object	
Client		
CgMs CONSULTING LTD		
Project Title		Job No. 7405
GEOPHYSICAL SURVEY - NOCTON FEN, NEAR BARDNEY, LINCOLNSHIRE		
Subject		
AREA 8		
GEOPHYSICS FOR ARCHAEOLOGY AND ENGINEERING		
VINEYARD HOUSE UPTON UPON SEVERN WR8 0SA		T: 01684 592266 E: info@stratascan.co.uk www.stratascan.co.uk
SUMO GROUP MEMBER		
Scale		
1:1250		
Plot	Checked by	Issue No.
A3	DGE	01
Survey date	Drawn by	Figure No.
SEPT 14	MU	09

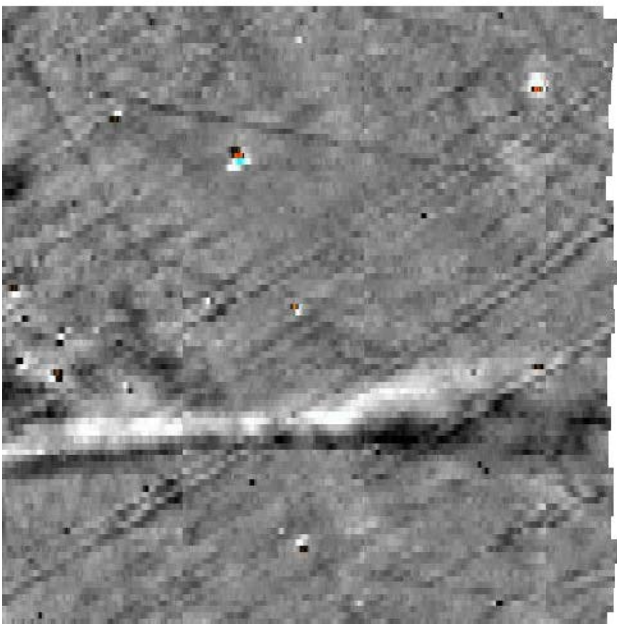
LOCATION OF SURVEY
GRIDS AND REFERENCING



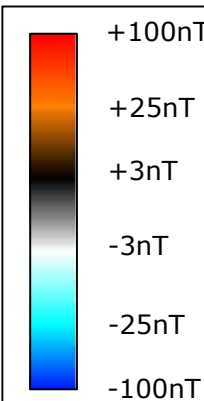
OS GRID REFERENCES

O	510341.00, 366400.00
P	510341.00, 366310.00

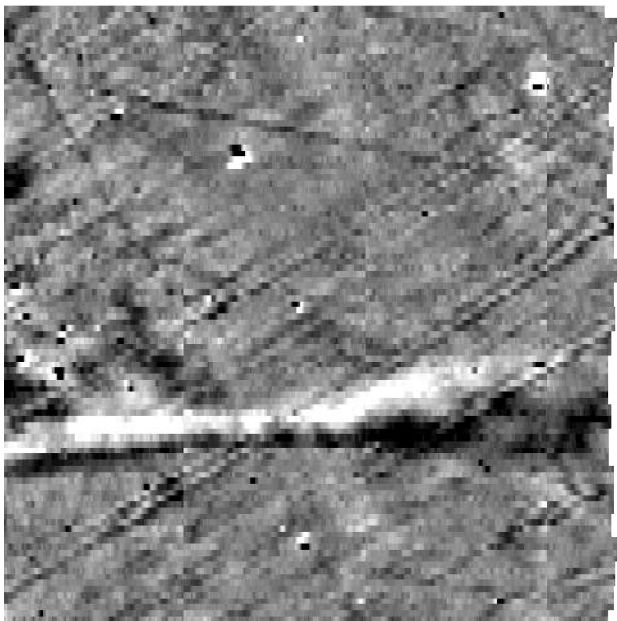
GRADIOMETER DATA
SHOWING EXTREME VALUES



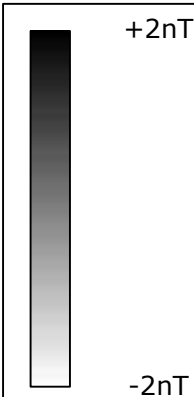
AREA 9



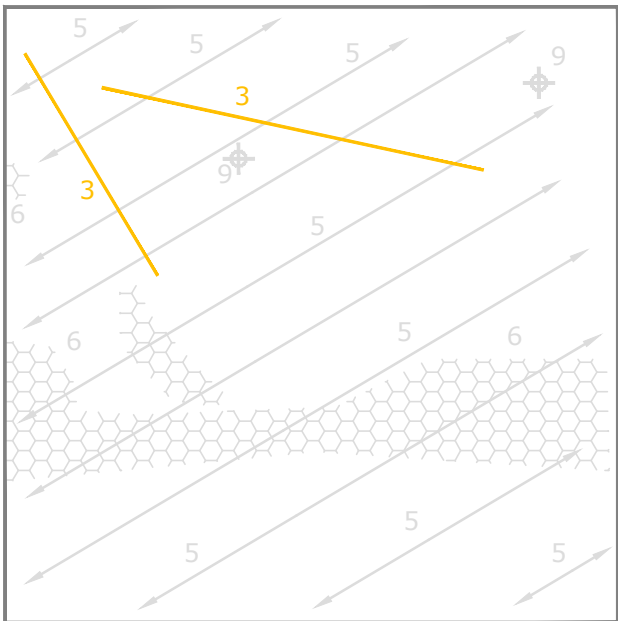
MINIMALLY PROCESSED
GRADIOMETER DATA



AREA 9



ABSTRACTION AND INTERPRETATION
OF GRADIOMETER ANOMALIES

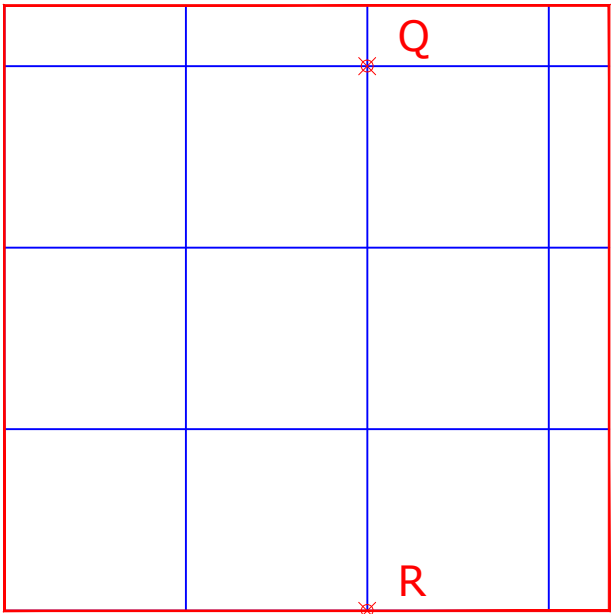


AREA 9

Amendments

Issue No.	Date	Description
-	-	-
-	-	-
© Stratascan Ltd - 2014		
KEY		
PROBABLE ARCHAEOLOGY		
	Positive anomaly / weak positive anomaly - probable cut feature of archaeological origin	
	Negative anomaly / weak negative anomaly - probable bank or earthwork of archaeological origin	
	Widely spaced curving parallel linear anomalies - probably related to ridge-and-furrow	
	Linear anomaly related to former field boundary visible on mapping from 1888 to 1956	
	Linear anomaly related to former field boundary not visible on available mapping	
POSSIBLE ARCHAEOLOGY		
	Positive anomaly / weak positive anomaly - possible cut feature of archaeological origin	
	Negative anomaly / weak negative anomaly - possible bank or earthwork of archaeological origin	
	Linear anomaly - Possible former field boundary	
OTHER ANOMALIES		
	Closely spaced parallel linear anomalies - related to agricultural activity such as ploughing or drains	
	Linear anomaly - possibly related to land drain	
	Magnetic disturbance associated with nearby metal object such as service or field boundary	
	Strong magnetic debris - possible disturbed or made ground	
	Scattered magnetic debris	
	Area of amorphous magnetic variation - probable natural (e.g. geological or pedological) origin	
	Magnetic spike - probable ferrous object	
Client		
CgMs CONSULTING LTD		
Project Title		Job No. 7405
GEOPHYSICAL SURVEY - NOCTON FEN, NEAR BARDNEY, LINCOLNSHIRE		
Subject		
AREA 9		
GEOPHYSICS FOR ARCHAEOLOGY AND ENGINEERING		
VINEYARD HOUSE UPTON UPON SEVERN WR8 0SA		T: 01684 592266 E: info@stratascan.co.uk www.stratascan.co.uk
SUMO GROUP MEMBER		
Scale		
1:1250		
Plot	Checked by	Issue No.
A3	DGE	01
Survey date	Drawn by	Figure No.
SEPT 14	MU	10

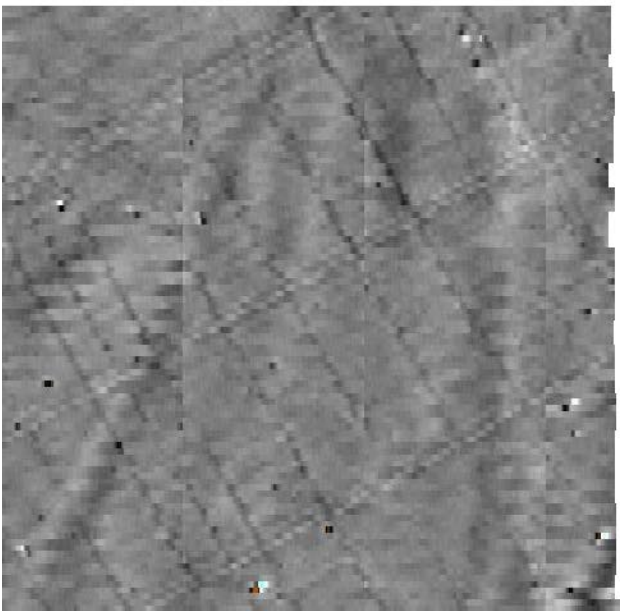
LOCATION OF SURVEY
GRIDS AND REFERENCING



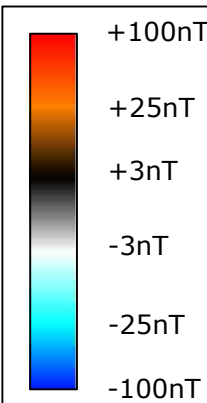
OS GRID REFERENCES

Q	510596.00, 366102.00
R	510596.00, 366012.00

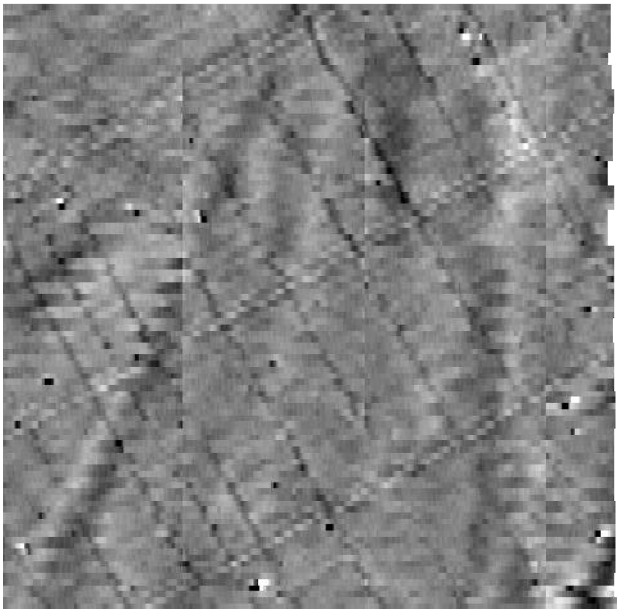
GRADIOMETER DATA
SHOWING EXTREME VALUES



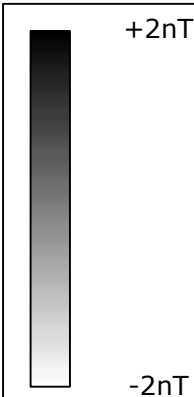
AREA 10



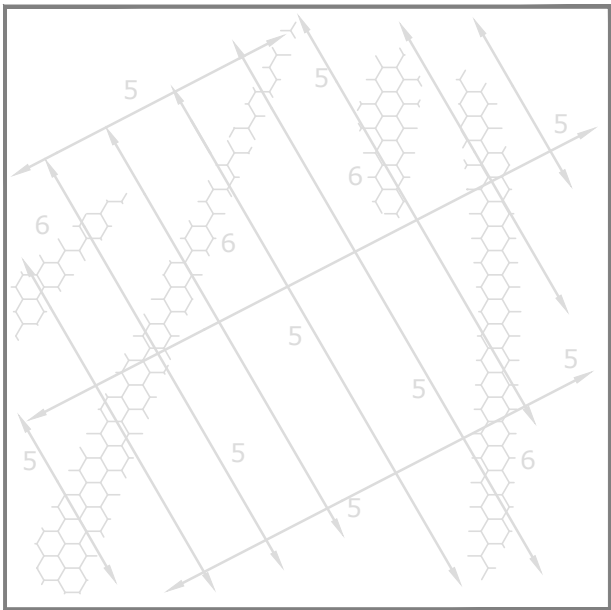
MINIMALLY PROCESSED
GRADIOMETER DATA



AREA 10



ABSTRACTION AND INTERPRETATION
OF GRADIOMETER ANOMALIES

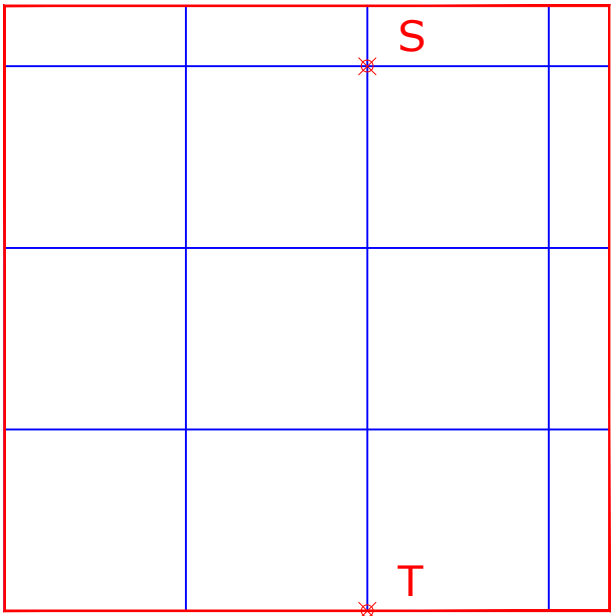


AREA 10

Amendments

Issue No.	Date	Description
-	-	-
-	-	-
© Stratascan Ltd - 2014		
KEY		
PROBABLE ARCHAEOLOGY		
	Positive anomaly / weak positive anomaly - probable cut feature of archaeological origin	
	Negative anomaly / weak negative anomaly - probable bank or earthwork of archaeological origin	
	Widely spaced curving parallel linear anomalies - probably related to ridge-and-furrow	
	Linear anomaly related to former field boundary visible on mapping from 1888 to 1956	
	Linear anomaly related to former field boundary not visible on available mapping	
POSSIBLE ARCHAEOLOGY		
	Positive anomaly / weak positive anomaly - possible cut feature of archaeological origin	
	Negative anomaly / weak negative anomaly - possible bank or earthwork of archaeological origin	
	Linear anomaly - Possible former field boundary	
OTHER ANOMALIES		
	Closely spaced parallel linear anomalies - related to agricultural activity such as ploughing or drains	
	Linear anomaly - possibly related to land drain	
	Magnetic disturbance associated with nearby metal object such as service or field boundary	
	Strong magnetic debris - possible disturbed or made ground	
	Scattered magnetic debris	
	Area of amorphous magnetic variation - probable natural (e.g. geological or pedological) origin	
	Magnetic spike - probable ferrous object	
Client		
CgMs CONSULTING LTD		
Project Title		Job No. 7405
GEOPHYSICAL SURVEY - NOCTON FEN, NEAR BARDNEY, LINCOLNSHIRE		
Subject		
AREA 10		
GEOPHYSICS FOR ARCHAEOLOGY AND ENGINEERING		
VINEYARD HOUSE UPTON UPON SEVERN WR8 0SA		T: 01684 592266 E: info@stratascan.co.uk www.stratascan.co.uk
SUMO GROUP MEMBER		
Scale		
1:1250		
Plot	Checked by	Issue No.
A3	DGE	01
Survey date	Drawn by	Figure No.
SEPT 14	MU	11

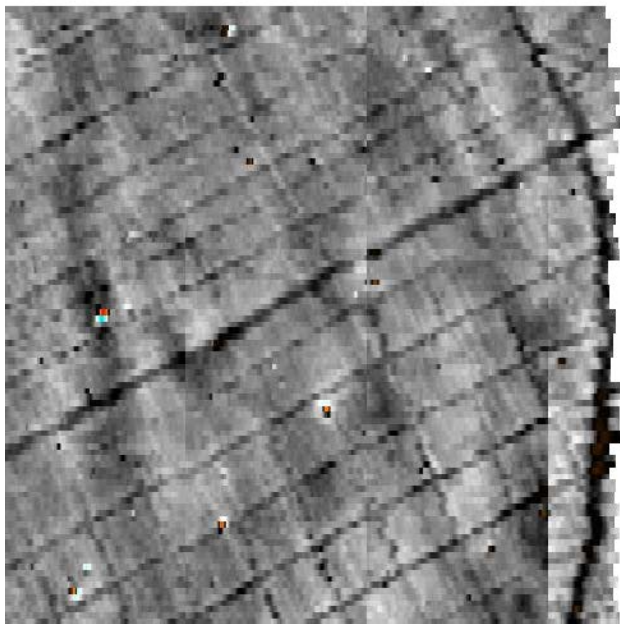
LOCATION OF SURVEY
GRIDS AND REFERENCING



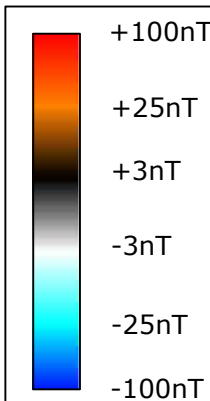
OS GRID REFERENCES

S	509486.00, 366936.00
T	509486.00, 366846.00

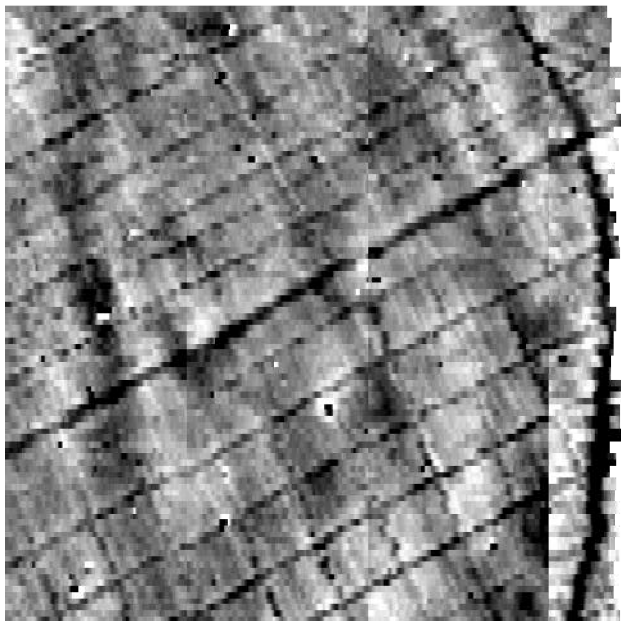
GRADIOMETER DATA
SHOWING EXTREME VALUES



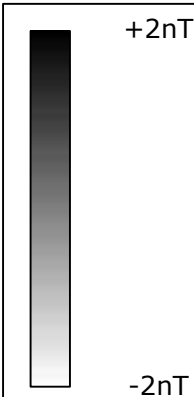
AREA 11



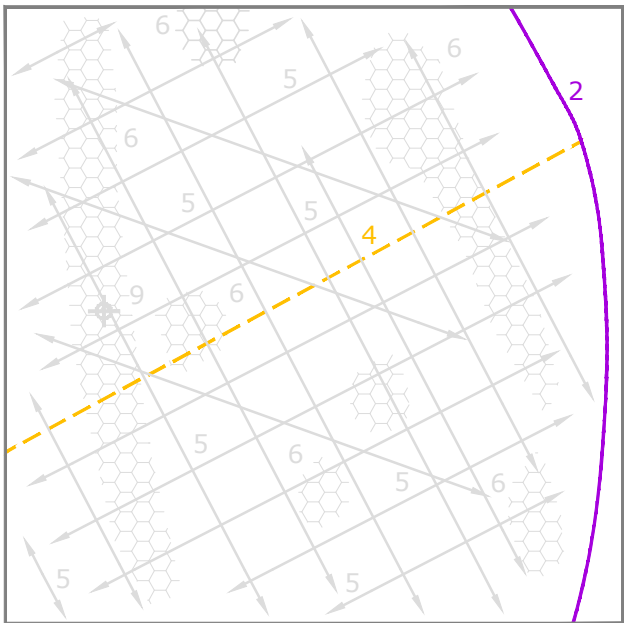
MINIMALLY PROCESSED
GRADIOMETER DATA



AREA 11



ABSTRACTION AND INTERPRETATION
OF GRADIOMETER ANOMALIES



AREA 11

Amendments

Issue No.	Date	Description
-	-	-
-	-	-

© Stratascan Ltd - 2014

KEY

PROBABLE ARCHAEOLOGY

	Positive anomaly / weak positive anomaly - probable cut feature of archaeological origin
	Negative anomaly / weak negative anomaly - probable bank or earthwork of archaeological origin
	Widely spaced curving parallel linear anomalies - probably related to ridge-and-furrow
	Linear anomaly related to former field boundary visible on mapping from 1888 to 1956
	Linear anomaly related to former field boundary not visible on available mapping

POSSIBLE ARCHAEOLOGY

	Positive anomaly / weak positive anomaly - possible cut feature of archaeological origin
	Negative anomaly / weak negative anomaly - possible bank or earthwork of archaeological origin
	Linear anomaly - Possible former field boundary

OTHER ANOMALIES

	Closely spaced parallel linear anomalies - related to agricultural activity such as ploughing or drains
	Linear anomaly - possibly related to land drain
	Magnetic disturbance associated with nearby metal object such as service or field boundary
	Strong magnetic debris - possible disturbed or made ground
	Scattered magnetic debris
	Area of amorphous magnetic variation - probable natural (e.g. geological or pedological) origin
	Magnetic spike - probable ferrous object

Client
CgMs CONSULTING LTD

Project Title
GEOPHYSICAL SURVEY - NOCTON FEN, NEAR BARDNEY, LINCOLNSHIRE

Job No. 7405
Subject
AREA 11

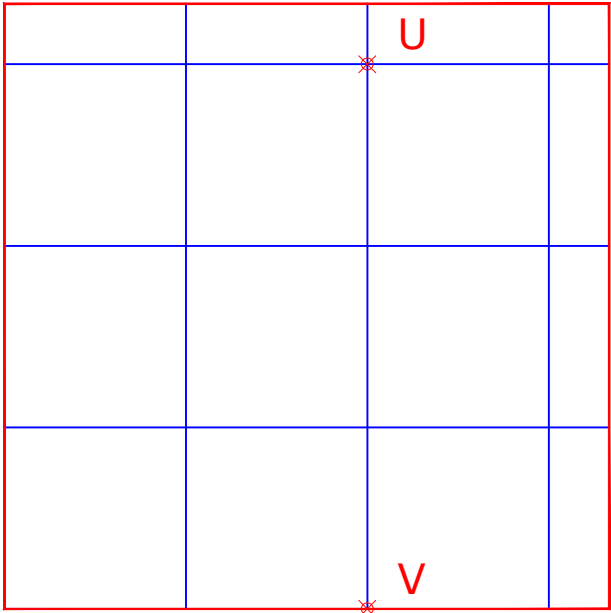
STRATASCAN™
GEOPHYSICS FOR ARCHAEOLOGY AND ENGINEERING
VINEYARD HOUSE T: 01684 592266
UPTON UPON SEVERN E: info@stratascan.co.uk
WR8 0SA www.stratascan.co.uk



Scale
1:1250
0m 10 20 30 40 50m

Plot A3	Checked by DGE	Issue No. 01
Survey date SEPT 14	Drawn by MU	Figure No. 12

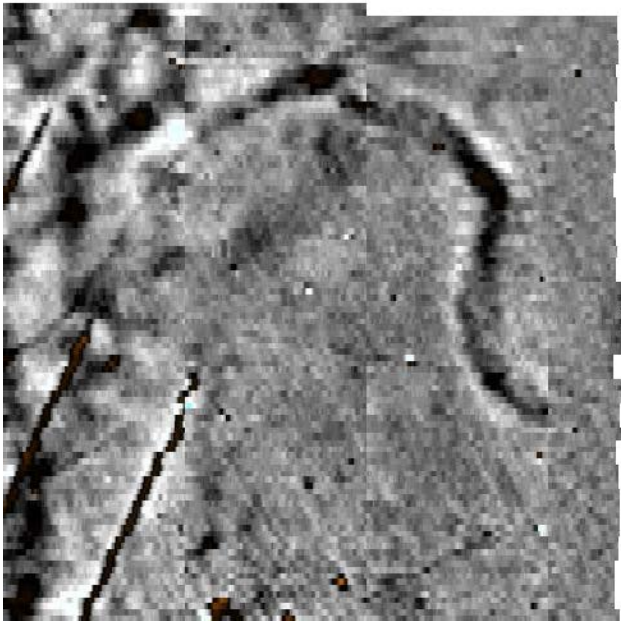
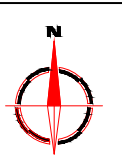
LOCATION OF SURVEY
GRIDS AND REFERENCING



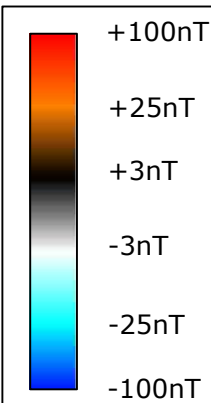
OS GRID REFERENCES

U	509642.00, 366487.00
V	509642.00, 366397.00

GRADIOMETER DATA
SHOWING EXTREME VALUES



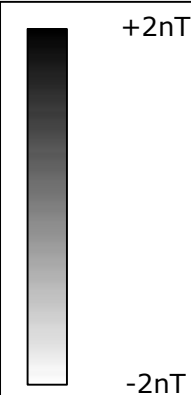
AREA 12



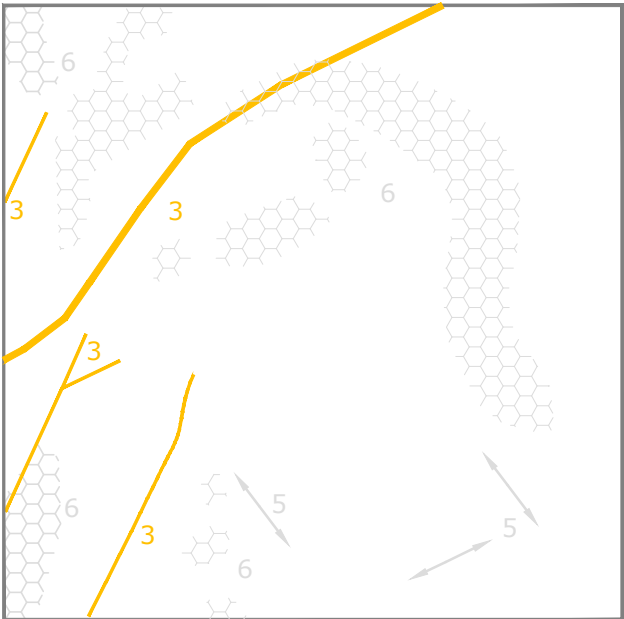
MINIMALLY PROCESSED
GRADIOMETER DATA



AREA 12



ABSTRACTION AND INTERPRETATION
OF GRADIOMETER ANOMALIES



AREA 12

Amendments

Issue No.	Date	Description
-	-	-
-	-	-

© Stratascan Ltd - 2014

KEY

PROBABLE ARCHAEOLOGY

	Positive anomaly / weak positive anomaly - probable cut feature of archaeological origin
	Negative anomaly / weak negative anomaly - probable bank or earthwork of archaeological origin
	Widely spaced curving parallel linear anomalies - probably related to ridge-and-furrow
	Linear anomaly related to former field boundary visible on mapping from 1888 to 1956
	Linear anomaly related to former field boundary not visible on available mapping

POSSIBLE ARCHAEOLOGY

	Positive anomaly / weak positive anomaly - possible cut feature of archaeological origin
	Negative anomaly / weak negative anomaly - possible bank or earthwork of archaeological origin
	Linear anomaly - Possible former field boundary

OTHER ANOMALIES

	Closely spaced parallel linear anomalies - related to agricultural activity such as ploughing or drains
	Linear anomaly - possibly related to land drain
	Magnetic disturbance associated with nearby metal object such as service or field boundary
	Strong magnetic debris - possible disturbed or made ground
	Scattered magnetic debris
	Area of amorphous magnetic variation - probable natural (e.g. geological or pedological) origin
	Magnetic spike - probable ferrous object

Client
CgMs CONSULTING LTD

Project Title
GEOPHYSICAL SURVEY - NOCTON FEN, NEAR BARDNEY, LINCOLNSHIRE

Subject
AREA 12

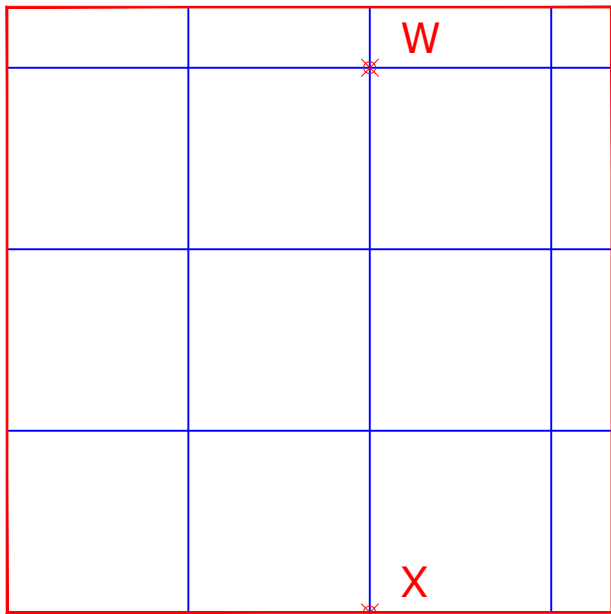
STRATASCAN
GEOPHYSICS FOR ARCHAEOLOGY
AND ENGINEERING
VINEYARD HOUSE T: 01684 592266
UPTON UPON SEVERN E: info@stratascan.co.uk
WR8 0SA www.stratascan.co.uk



Scale
1:1250
0m 10 20 30 40 50m

Plot A3	Checked by DGE	Issue No. 01
Survey date SEPT 14	Drawn by MU	Figure No. 13

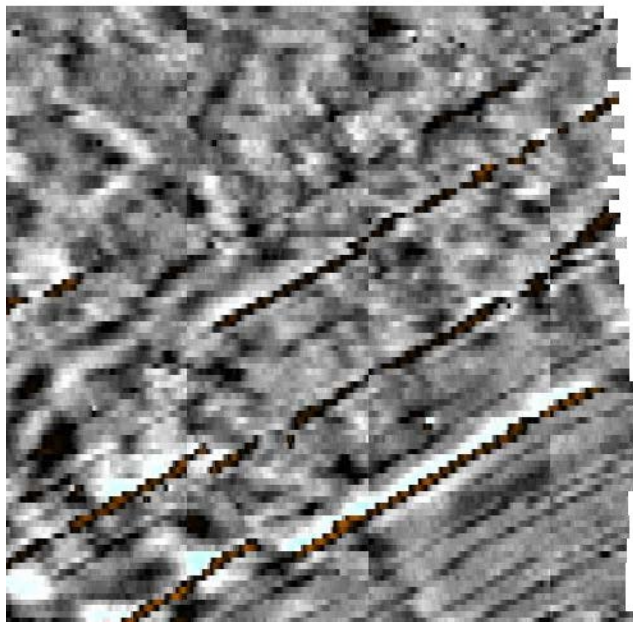
LOCATION OF SURVEY
GRIDS AND REFERENCING



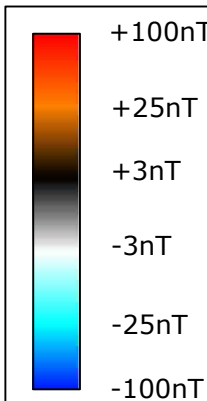
OS GRID REFERENCES

W	509796.00, 366070.00
X	509796.00, 365980.00

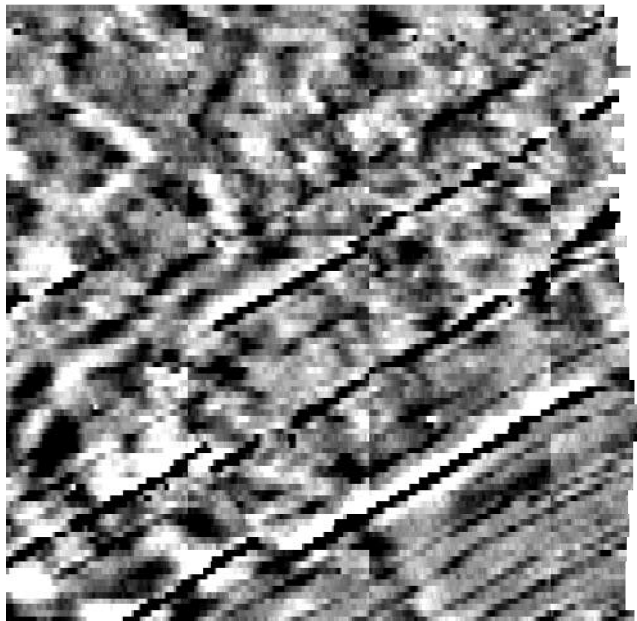
GRADIOMETER DATA
SHOWING EXTREME VALUES



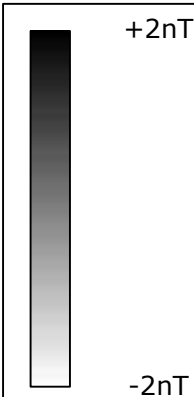
AREA 13



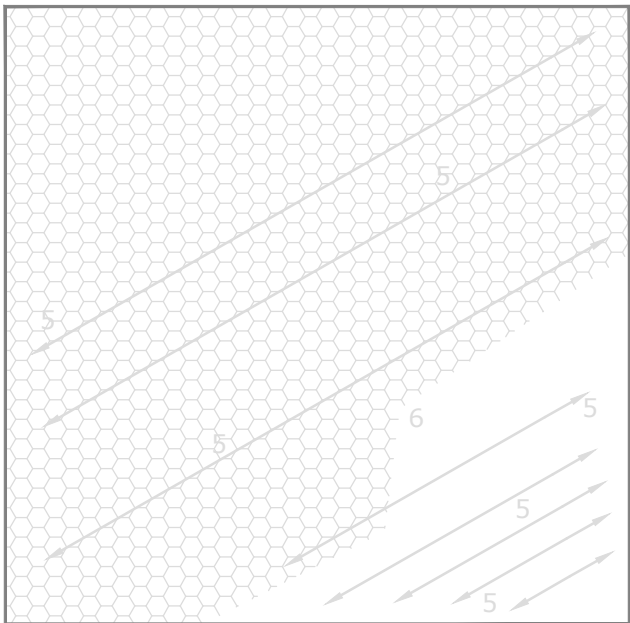
MINIMALLY PROCESSED
GRADIOMETER DATA



AREA 13



ABSTRACTION AND INTERPRETATION
OF GRADIOMETER ANOMALIES

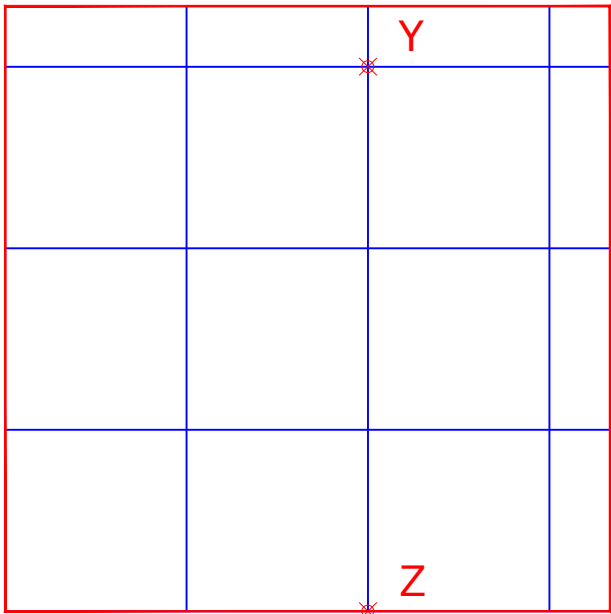


AREA 13

Amendments

Issue No.	Date	Description
-	-	-
-	-	-
© Stratascan Ltd - 2014		
KEY		
PROBABLE ARCHAEOLOGY		
	Positive anomaly / weak positive anomaly - probable cut feature of archaeological origin	
	Negative anomaly / weak negative anomaly - probable bank or earthwork of archaeological origin	
	Widely spaced curving parallel linear anomalies - probably related to ridge-and-furrow	
	Linear anomaly related to former field boundary visible on mapping from 1888 to 1956	
	Linear anomaly related to former field boundary not visible on available mapping	
POSSIBLE ARCHAEOLOGY		
	Positive anomaly / weak positive anomaly - possible cut feature of archaeological origin	
	Negative anomaly / weak negative anomaly - possible bank or earthwork of archaeological origin	
	Linear anomaly - Possible former field boundary	
OTHER ANOMALIES		
	Closely spaced parallel linear anomalies - related to agricultural activity such as ploughing or drains	
	Linear anomaly - possibly related to land drain	
	Magnetic disturbance associated with nearby metal object such as service or field boundary	
	Strong magnetic debris - possible disturbed or made ground	
	Scattered magnetic debris	
	Area of amorphous magnetic variation - probable natural (e.g. geological or pedological) origin	
	Magnetic spike - probable ferrous object	
Client		
CgMs CONSULTING LTD		
Project Title		Job No. 7405
GEOPHYSICAL SURVEY - NOCTON FEN, NEAR BARDNEY, LINCOLNSHIRE		
Subject		
AREA 13		
GEOPHYSICS FOR ARCHAEOLOGY AND ENGINEERING		
VINEYARD HOUSE UPTON UPON SEVERN WR8 0SA		T: 01684 592266 E: info@stratascan.co.uk www.stratascan.co.uk
SUMO GROUP MEMBER		
Scale		
1:1250		
Plot	Checked by	Issue No.
A3	DGE	01
Survey date	Drawn by	Figure No.
SEPT 14	MU	14

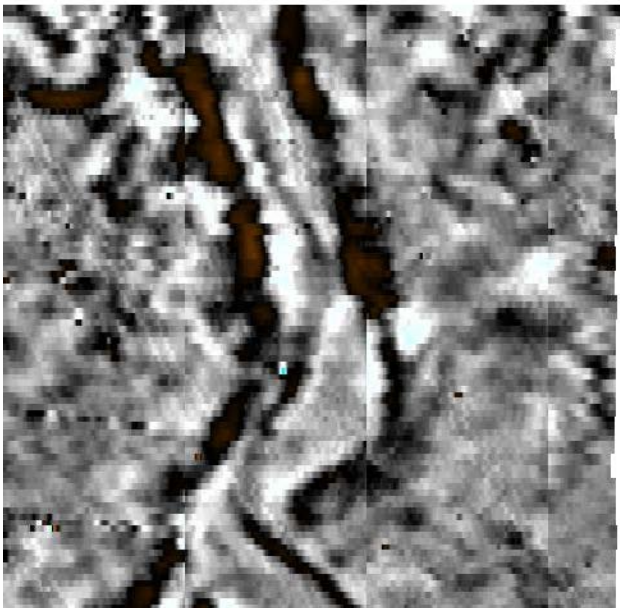
LOCATION OF SURVEY
GRIDS AND REFERENCING



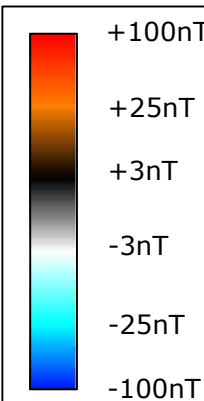
OS GRID REFERENCES

Y	510123.00, 365753.00
Z	510123.00, 365663.00

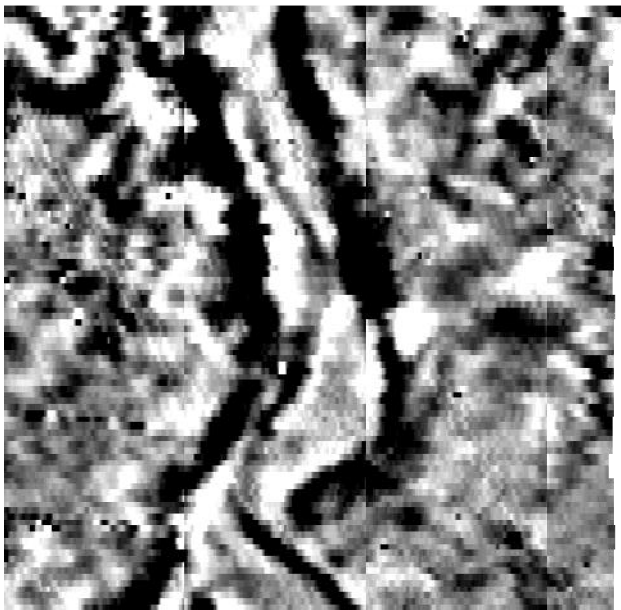
GRADIOMETER DATA
SHOWING EXTREME VALUES



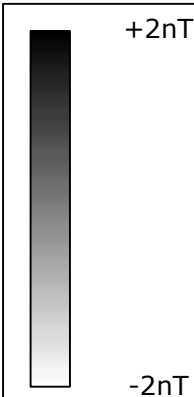
AREA 14



MINIMALLY PROCESSED
GRADIOMETER DATA



AREA 14



ABSTRACTION AND INTERPRETATION
OF GRADIOMETER ANOMALIES



AREA 14

Amendments

Issue No.	Date	Description
-	-	-
-	-	-

© Stratascan Ltd - 2014

KEY

PROBABLE ARCHAEOLOGY

	Positive anomaly / weak positive anomaly - probable cut feature of archaeological origin
	Negative anomaly / weak negative anomaly - probable bank or earthwork of archaeological origin
	Widely spaced curving parallel linear anomalies - probably related to ridge-and-furrow
	Linear anomaly related to former field boundary visible on mapping from 1888 to 1956
	Linear anomaly related to former field boundary not visible on available mapping

POSSIBLE ARCHAEOLOGY

	Positive anomaly / weak positive anomaly - possible cut feature of archaeological origin
	Negative anomaly / weak negative anomaly - possible bank or earthwork of archaeological origin
	Linear anomaly - Possible former field boundary

OTHER ANOMALIES

	Closely spaced parallel linear anomalies - related to agricultural activity such as ploughing or drains
	Linear anomaly - possibly related to land drain
	Magnetic disturbance associated with nearby metal object such as service or field boundary
	Strong magnetic debris - possible disturbed or made ground
	Scattered magnetic debris
	Area of amorphous magnetic variation - probable natural (e.g. geological or pedological) origin
	Magnetic spike - probable ferrous object

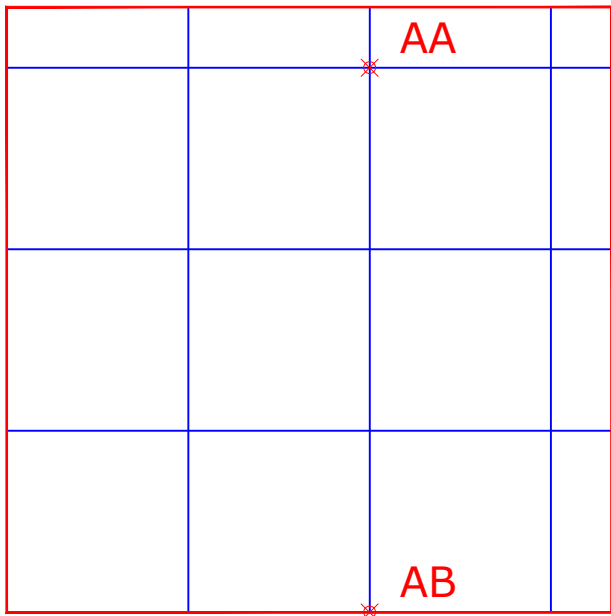
Client	
CgMs CONSULTING LTD	
Project Title	Job No. 7405
GEOPHYSICAL SURVEY - NOCTON FEN, NEAR BARDNEY, LINCOLNSHIRE	
Subject	
AREA 14	

STRATASCAN™
GEOPHYSICS FOR ARCHAEOLOGY
AND ENGINEERING
VINEYARD HOUSE T: 01684 592266
UPTON UPON SEVERN E: info@stratascan.co.uk
WR8 0SA www.stratascan.co.uk

GPR ASSOCIATION
SUMO SUMO GROUP MEMBER
ISO 9001 certified **UKAS** 078 **ISO 14001** certified **UKAS** 078

Scale	1:1250	
Plot	A3	Checked by DGE
Survey date	SEPT 14	Drawn by MU
Issue No.	01	Figure No. 15

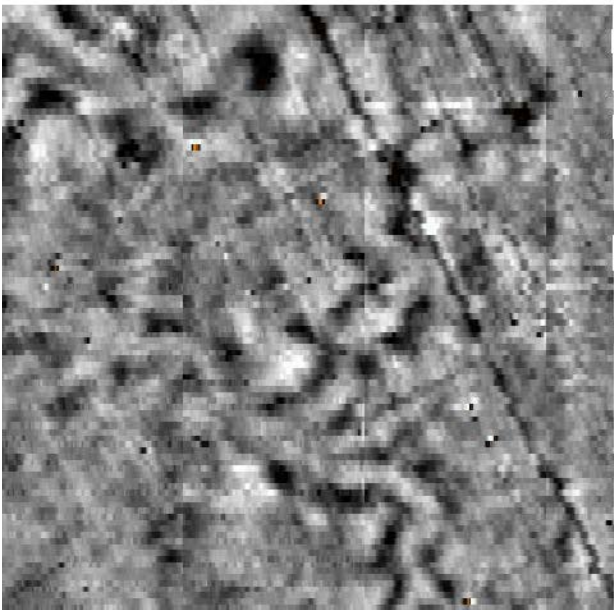
LOCATION OF SURVEY
GRIDS AND REFERENCING



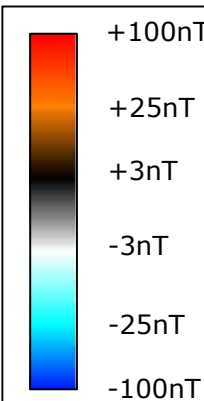
OS GRID REFERENCES

AA	508950.00, 366661.00
AB	508950.00, 366571.00

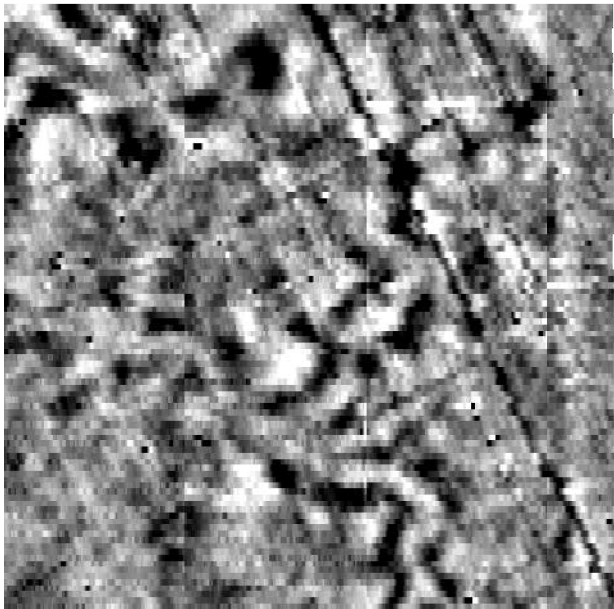
GRADIOMETER DATA
SHOWING EXTREME VALUES



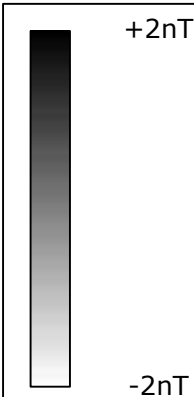
AREA 15



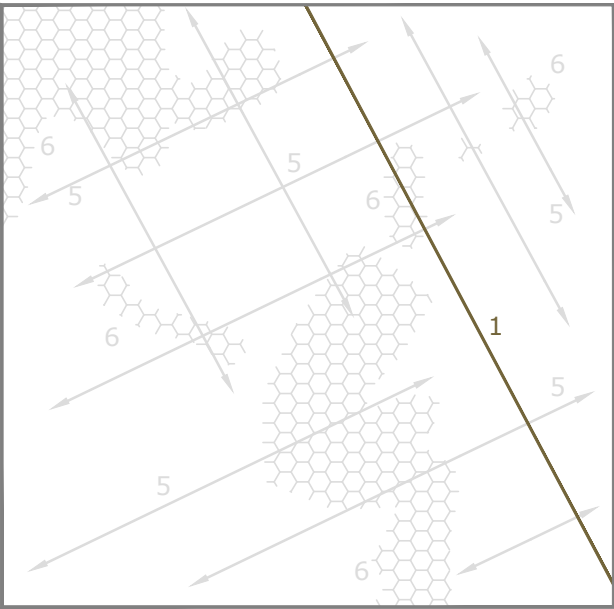
MINIMALLY PROCESSED
GRADIOMETER DATA



AREA 15



ABSTRACTION AND INTERPRETATION
OF GRADIOMETER ANOMALIES



AREA 15

Amendments

Issue No.	Date	Description
-	-	-
-	-	-

© Stratascan Ltd - 2014

KEY

PROBABLE ARCHAEOLOGY

	Positive anomaly / weak positive anomaly - probable cut feature of archaeological origin
	Negative anomaly / weak negative anomaly - probable bank or earthwork of archaeological origin
	Widely spaced curving parallel linear anomalies - probably related to ridge-and-furrow
	Linear anomaly related to former field boundary visible on mapping from 1888 to 1956
	Linear anomaly related to former field boundary not visible on available mapping

POSSIBLE ARCHAEOLOGY

	Positive anomaly / weak positive anomaly - possible cut feature of archaeological origin
	Negative anomaly / weak negative anomaly - possible bank or earthwork of archaeological origin
	Linear anomaly - Possible former field boundary

OTHER ANOMALIES

	Closely spaced parallel linear anomalies - related to agricultural activity such as ploughing or drains
	Linear anomaly - possibly related to land drain
	Magnetic disturbance associated with nearby metal object such as service or field boundary
	Strong magnetic debris - possible disturbed or made ground
	Scattered magnetic debris
	Area of amorphous magnetic variation - probable natural (e.g. geological or pedological) origin
	Magnetic spike - probable ferrous object

Client
CgMs CONSULTING LTD

Project Title
GEOPHYSICAL SURVEY - NOCTON FEN, NEAR BARDNEY, LINCOLNSHIRE

Subject
AREA 15

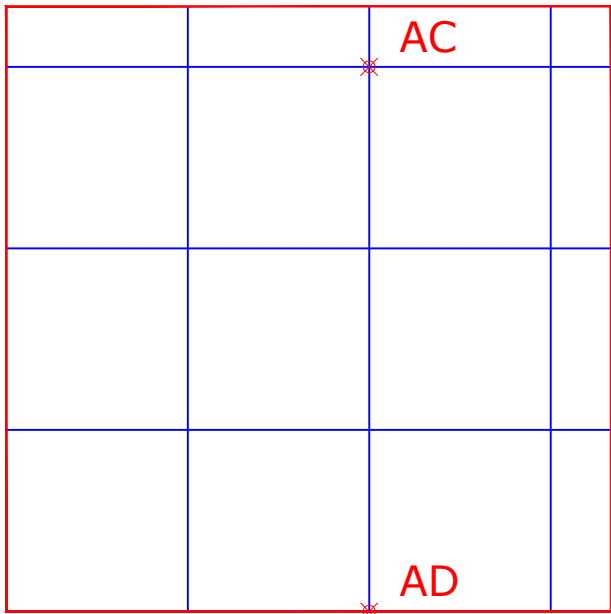
STRATASCAN
GEOPHYSICS FOR ARCHAEOLOGY
AND ENGINEERING
VINEYARD HOUSE
UPTON UPON SEVERN
WR8 0SA
T: 01684 592266
E: info@stratascan.co.uk
www.stratascan.co.uk



Scale
1:1250
0m 10 20 30 40 50m

Plot A3	Checked by DGE	Issue No. 01
Survey date SEPT 14	Drawn by MU	Figure No. 16

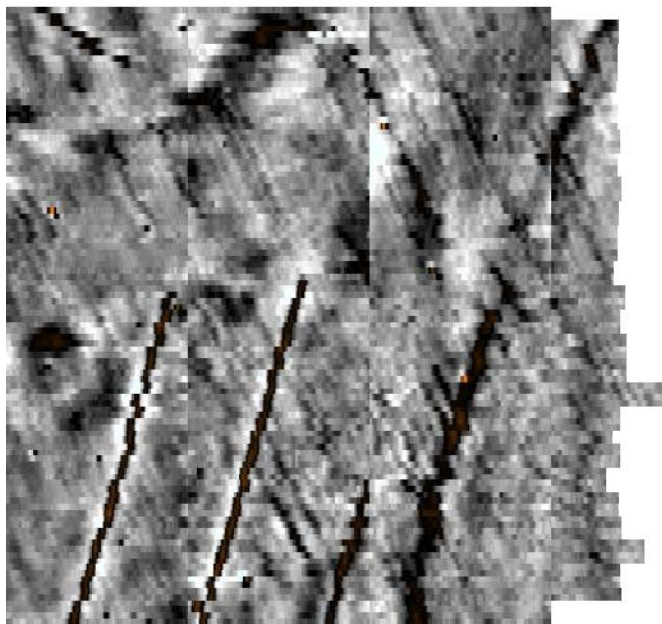
LOCATION OF SURVEY
GRIDS AND REFERENCING



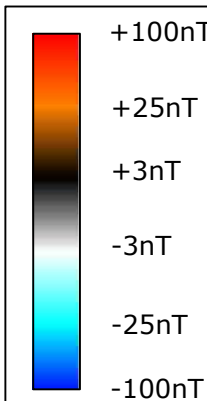
OS GRID REFERENCES

AC	509080.00, 366295.00
AD	509080.00, 366205.00

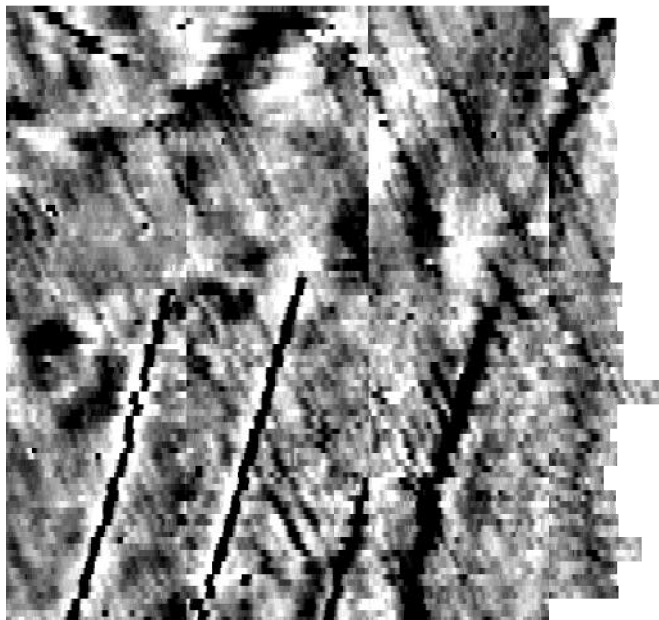
GRADIOMETER DATA
SHOWING EXTREME VALUES



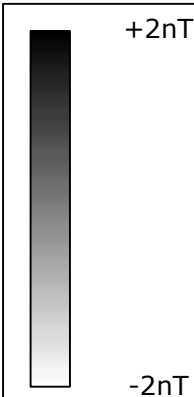
AREA 16



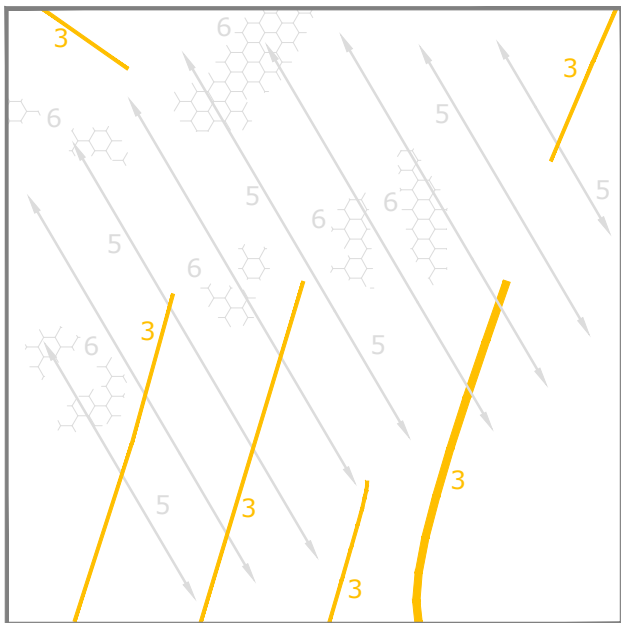
MINIMALLY PROCESSED
GRADIOMETER DATA



AREA 16



ABSTRACTION AND INTERPRETATION
OF GRADIOMETER ANOMALIES

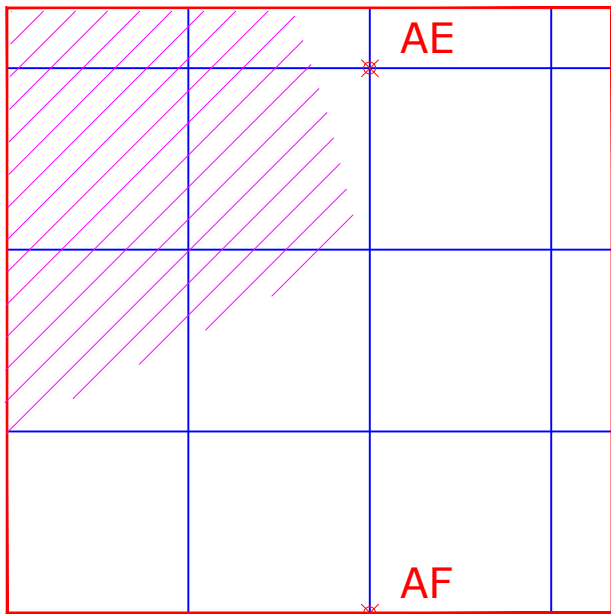


AREA 16

Amendments

Issue No.	Date	Description
-	-	-
-	-	-
© Stratascan Ltd - 2014		
KEY		
PROBABLE ARCHAEOLOGY		
	Positive anomaly / weak positive anomaly - probable cut feature of archaeological origin	
	Negative anomaly / weak negative anomaly - probable bank or earthwork of archaeological origin	
	Widely spaced curving parallel linear anomalies - probably related to ridge-and-furrow	
	Linear anomaly related to former field boundary visible on mapping from 1888 to 1956	
	Linear anomaly related to former field boundary not visible on available mapping	
POSSIBLE ARCHAEOLOGY		
	Positive anomaly / weak positive anomaly - possible cut feature of archaeological origin	
	Negative anomaly / weak negative anomaly - possible bank or earthwork of archaeological origin	
	Linear anomaly - Possible former field boundary	
OTHER ANOMALIES		
	Closely spaced parallel linear anomalies - related to agricultural activity such as ploughing or drains	
	Linear anomaly - possibly related to land drain	
	Magnetic disturbance associated with nearby metal object such as service or field boundary	
	Strong magnetic debris - possible disturbed or made ground	
	Scattered magnetic debris	
	Area of amorphous magnetic variation - probable natural (e.g. geological or pedological) origin	
	Magnetic spike - probable ferrous object	
Client		
CgMs CONSULTING LTD		
Project Title		Job No. 7405
GEOPHYSICAL SURVEY - NOCTON FEN, NEAR BARDNEY, LINCOLNSHIRE		
Subject		
AREA 16		
GEOPHYSICS FOR ARCHAEOLOGY AND ENGINEERING		
VINEYARD HOUSE UPTON UPON SEVERN WR8 0SA		T: 01684 592266 E: info@stratascan.co.uk www.stratascan.co.uk
SUMO GROUP MEMBER		
Scale 1:1250		
Plot	Checked by	Issue No.
A3	DGE	01
Survey date	Drawn by	Figure No.
SEPT 14	MU	17

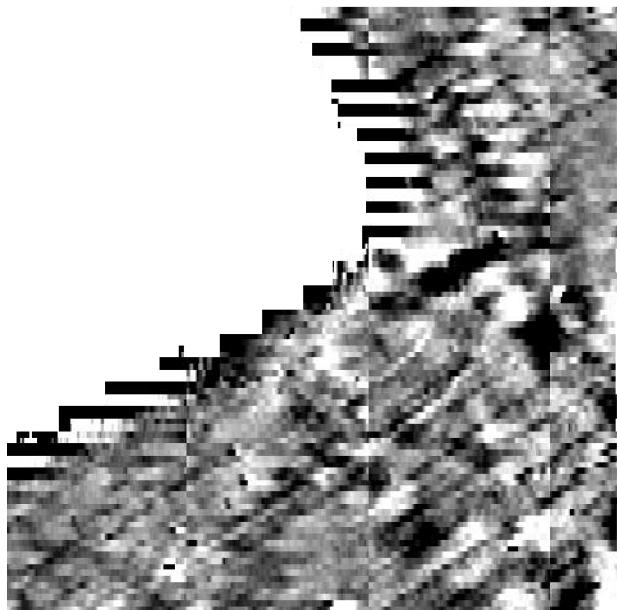
LOCATION OF SURVEY
GRIDS AND REFERENCING



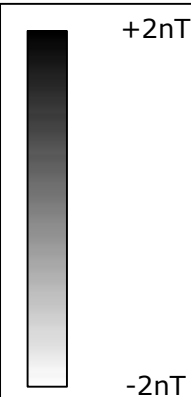
OS GRID REFERENCES

AE	509242.00, 365719.00	
AF	509242.00, 365629.00	Area unsurveyable due to overgrown vegetation

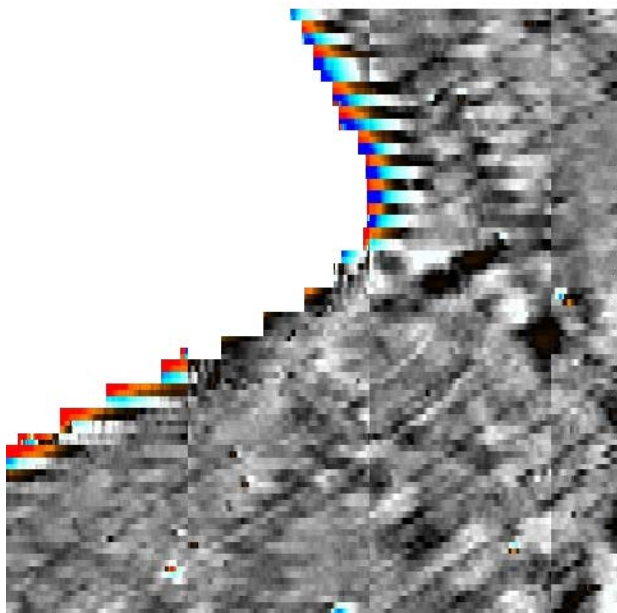
MINIMALLY PROCESSED
GRADIOMETER DATA



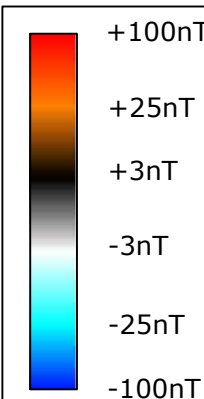
AREA 17



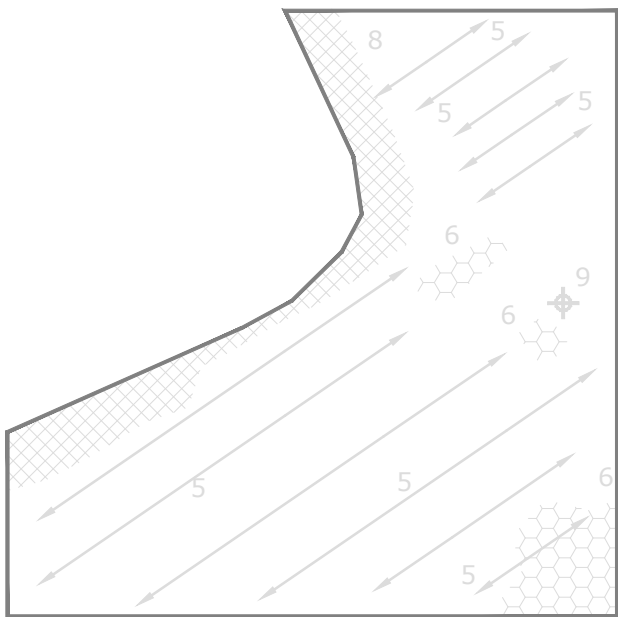
GRADIOMETER DATA
SHOWING EXTREME VALUES



AREA 17



ABSTRACTION AND INTERPRETATION
OF GRADIOMETER ANOMALIES

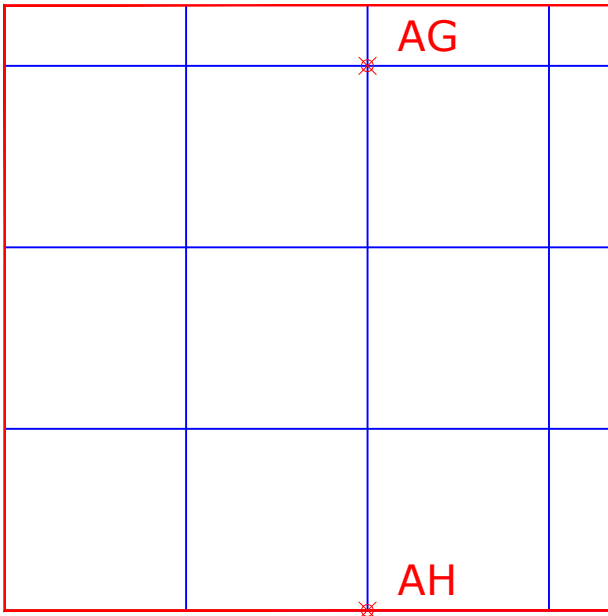


AREA 17

Amendments

Issue No.	Date	Description
-	-	-
-	-	-
© Stratascan Ltd - 2014		
KEY		
PROBABLE ARCHAEOLOGY		
	Positive anomaly / weak positive anomaly - probable cut feature of archaeological origin	
	Negative anomaly / weak negative anomaly - probable bank or earthwork of archaeological origin	
	Widely spaced curving parallel linear anomalies - probably related to ridge-and-furrow	
	Linear anomaly related to former field boundary visible on mapping from 1888 to 1956	
	Linear anomaly related to former field boundary not visible on available mapping	
POSSIBLE ARCHAEOLOGY		
	Positive anomaly / weak positive anomaly - possible cut feature of archaeological origin	
	Negative anomaly / weak negative anomaly - possible bank or earthwork of archaeological origin	
	Linear anomaly - Possible former field boundary	
OTHER ANOMALIES		
	Closely spaced parallel linear anomalies - related to agricultural activity such as ploughing or drains	
	Linear anomaly - possibly related to land drain	
	Magnetic disturbance associated with nearby metal object such as service or field boundary	
	Strong magnetic debris - possible disturbed or made ground	
	Scattered magnetic debris	
	Area of amorphous magnetic variation - probable natural (e.g. geological or pedological) origin	
	Magnetic spike - probable ferrous object	
Client		
CgMs CONSULTING LTD		
Project Title		Job No. 7405
GEOPHYSICAL SURVEY - NOCTON FEN, NEAR BARDNEY, LINCOLNSHIRE		
Subject		
AREA 17		
GEOPHYSICS FOR ARCHAEOLOGY AND ENGINEERING		
VINEYARD HOUSE UPTON UPON SEVERN WR8 0SA		T: 01684 592266 E: info@stratascan.co.uk www.stratascan.co.uk
SUMO GROUP MEMBER		
Scale 1:1250		
Plot	Checked by	Issue No.
A3	DGE	01
Survey date	Drawn by	Figure No.
SEPT 14	MU	18

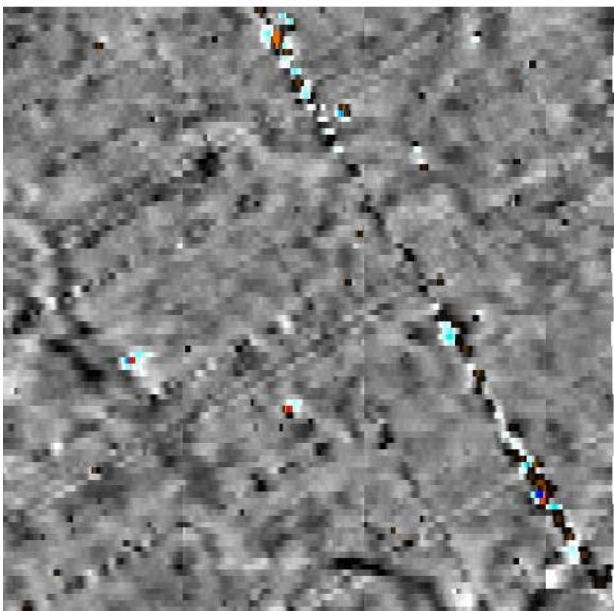
LOCATION OF SURVEY
GRIDS AND REFERENCING



OS GRID REFERENCES

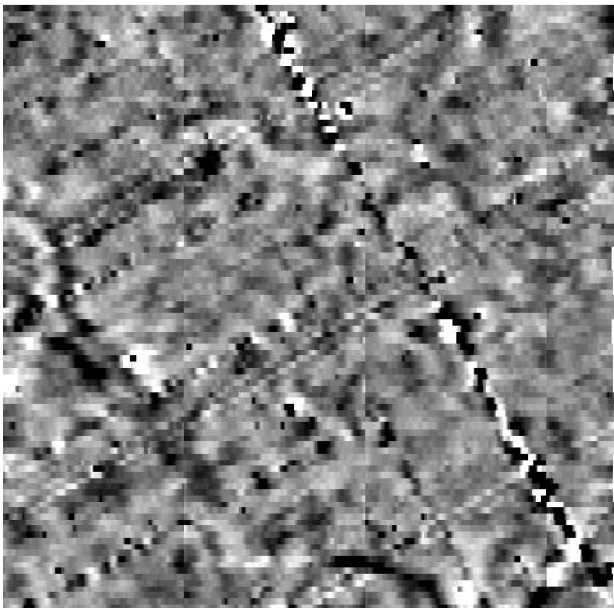
AG	509624.00, 365467.00
AH	509624.00, 365377.00

GRADIOMETER DATA
SHOWING EXTREME VALUES



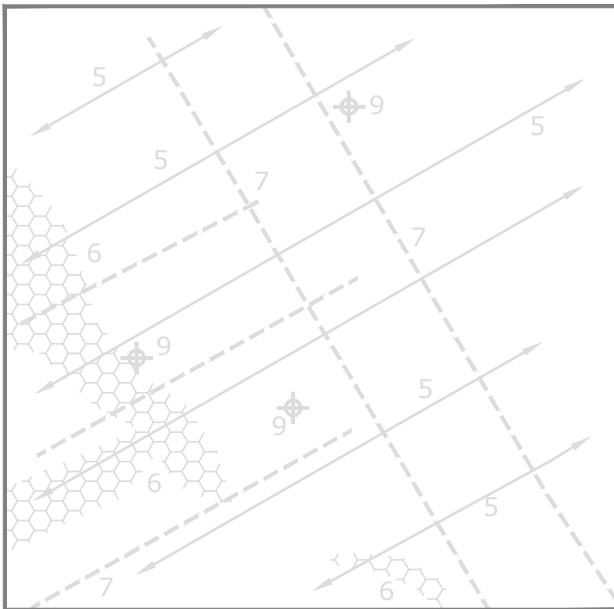
AREA 18

MINIMALLY PROCESSED
GRADIOMETER DATA



AREA 18

ABSTRACTION AND INTERPRETATION
OF GRADIOMETER ANOMALIES



AREA 18

Amendments

Issue No.	Date	Description
-	-	-
-	-	-

© Stratascan Ltd - 2014

KEY

PROBABLE ARCHAEOLOGY

	Positive anomaly / weak positive anomaly - probable cut feature of archaeological origin
	Negative anomaly / weak negative anomaly - probable bank or earthwork of archaeological origin
	Widely spaced curving parallel linear anomalies - probably related to ridge-and-furrow
	Linear anomaly related to former field boundary visible on mapping from 1888 to 1956
	Linear anomaly related to former field boundary not visible on available mapping

POSSIBLE ARCHAEOLOGY

	Positive anomaly / weak positive anomaly - possible cut feature of archaeological origin
	Negative anomaly / weak negative anomaly - possible bank or earthwork of archaeological origin
	Linear anomaly - Possible former field boundary

OTHER ANOMALIES

	Closely spaced parallel linear anomalies - related to agricultural activity such as ploughing or drains
	Linear anomaly - possibly related to land drain
	Magnetic disturbance associated with nearby metal object such as service or field boundary
	Strong magnetic debris - possible disturbed or made ground
	Scattered magnetic debris
	Area of amorphous magnetic variation - probable natural (e.g. geological or pedological) origin
	Magnetic spike - probable ferrous object

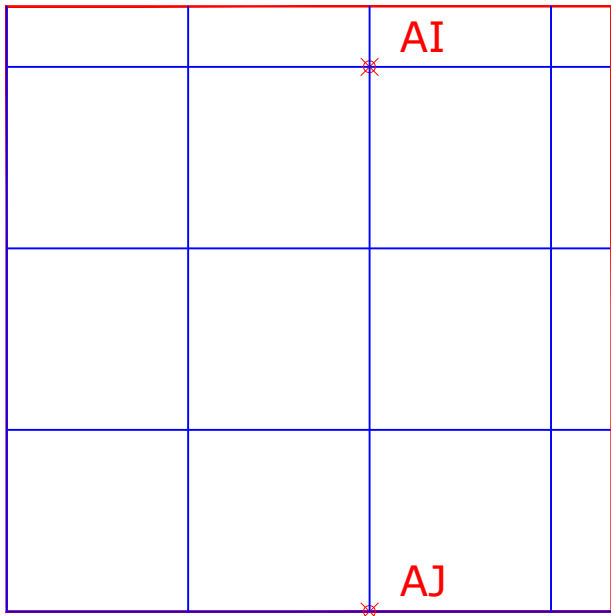
Client	
CgMs CONSULTING LTD	
Project Title	Job No. 7405
GEOPHYSICAL SURVEY - NOCTON FEN, NEAR BARDNEY, LINCOLNSHIRE	
Subject	
AREA 18	

STRATASCAN™
GEOPHYSICS FOR ARCHAEOLOGY
AND ENGINEERING
VINEYARD HOUSE T: 01684 592266
UPTON UPON SEVERN E: info@stratascan.co.uk
WR8 0SA www.stratascan.co.uk

EUROPEAN GPR ASSOCIATION
SUMO SUMO GROUP MEMBER
ISO 9001 certified UKAS ISO 14001 certified

Scale	1:1250	
Plot	A3	Issue No. 01
Survey date	SEPT 14	Figure No. 19

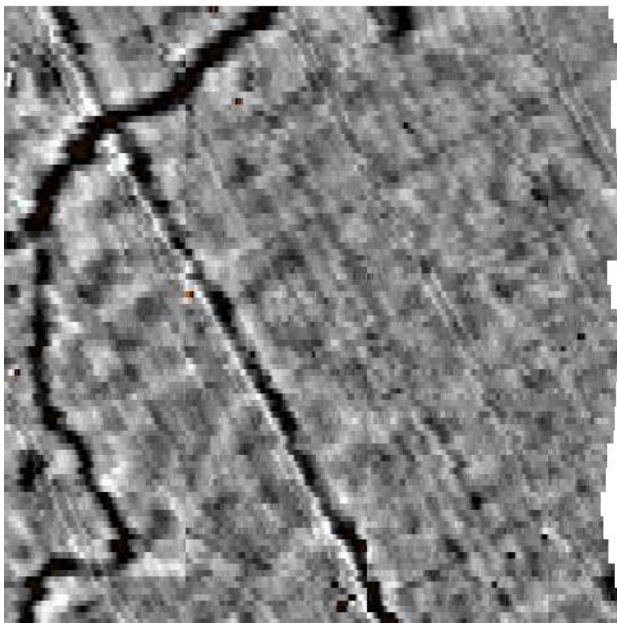
LOCATION OF SURVEY
GRIDS AND REFERENCING



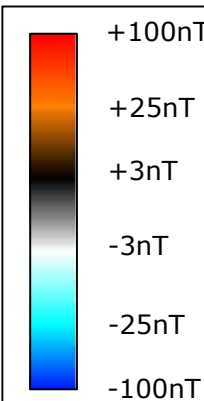
OS GRID REFERENCES

AI	508421.00, 366331.00
AJ	508421.00, 366241.00

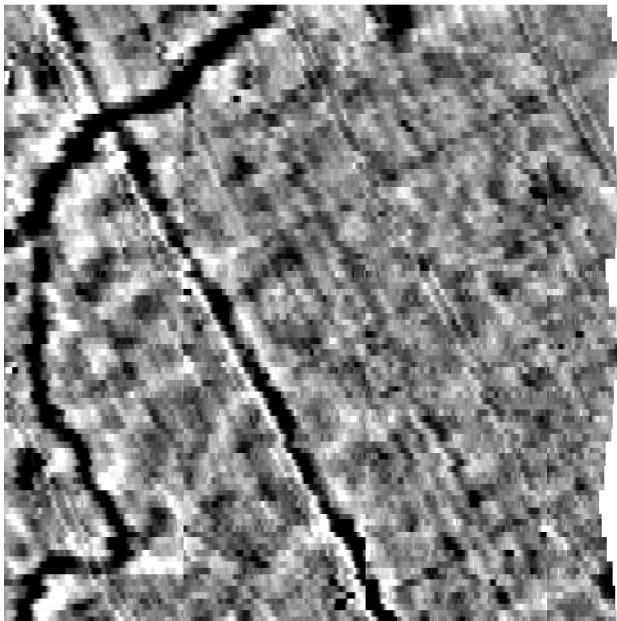
GRADIOMETER DATA
SHOWING EXTREME VALUES



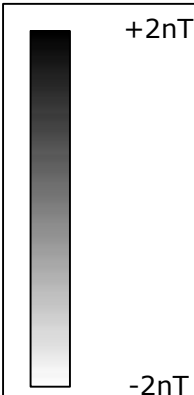
AREA 19



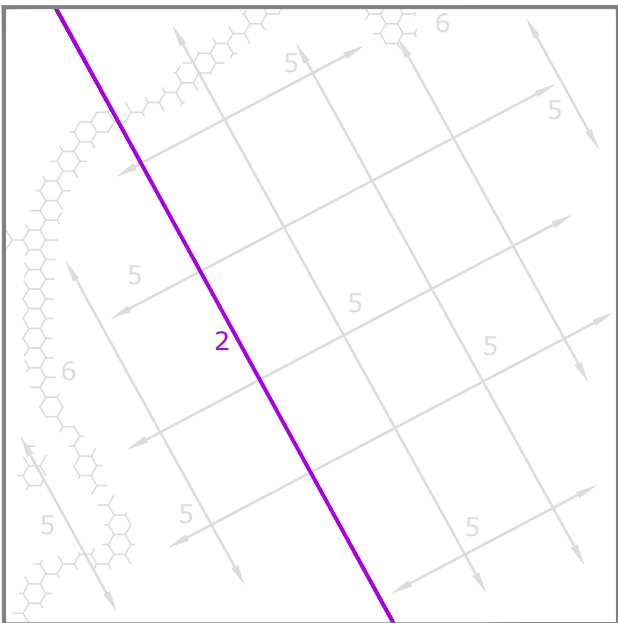
MINIMALLY PROCESSED
GRADIOMETER DATA



AREA 19



ABSTRACTION AND INTERPRETATION
OF GRADIOMETER ANOMALIES



AREA 19

Amendments

Issue No.	Date	Description
-	-	-
-	-	-

© Stratascan Ltd - 2014

KEY

PROBABLE ARCHAEOLOGY

	Positive anomaly / weak positive anomaly - probable cut feature of archaeological origin
	Negative anomaly / weak negative anomaly - probable bank or earthwork of archaeological origin
	Widely spaced curving parallel linear anomalies - probably related to ridge-and-furrow
	Linear anomaly related to former field boundary visible on mapping from 1888 to 1956
	Linear anomaly related to former field boundary not visible on available mapping

POSSIBLE ARCHAEOLOGY

	Positive anomaly / weak positive anomaly - possible cut feature of archaeological origin
	Negative anomaly / weak negative anomaly - possible bank or earthwork of archaeological origin
	Linear anomaly - Possible former field boundary

OTHER ANOMALIES

	Closely spaced parallel linear anomalies - related to agricultural activity such as ploughing or drains
	Linear anomaly - possibly related to land drain
	Magnetic disturbance associated with nearby metal object such as service or field boundary
	Strong magnetic debris - possible disturbed or made ground
	Scattered magnetic debris
	Area of amorphous magnetic variation - probable natural (e.g. geological or pedological) origin
	Magnetic spike - probable ferrous object

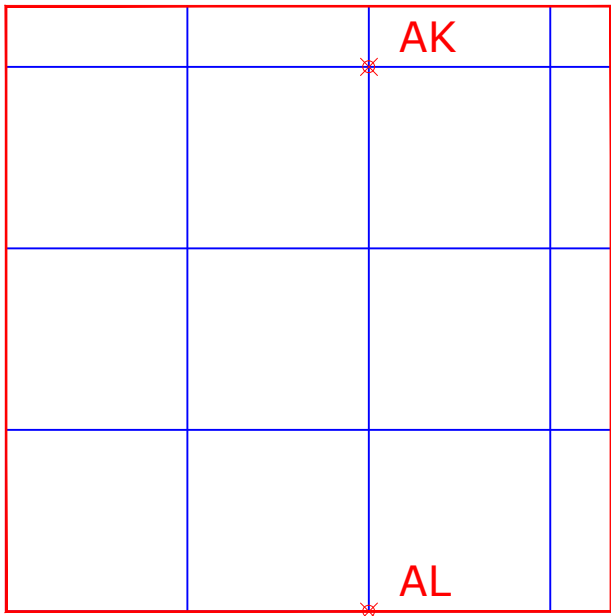
Client	
CgMs CONSULTING LTD	
Project Title	Job No. 7405
GEOPHYSICAL SURVEY - NOCTON FEN, NEAR BARDNEY, LINCOLNSHIRE	
Subject	
AREA 19	

STRATASCAN™
GEOPHYSICS FOR ARCHAEOLOGY
AND ENGINEERING
VINEYARD HOUSE T: 01684 592266
UPTON UPON SEVERN E: info@stratascan.co.uk
WR8 0SA www.stratascan.co.uk

GPR ASSOCIATION
SUMO SUMO GROUP MEMBER
ISO 9001 certified **UKAS** 078 **ISO 14001** certified **UKAS** 078

Scale	1:1250	
Plot	A3	Issue No. 01
Survey date	SEPT 14	Figure No. 20

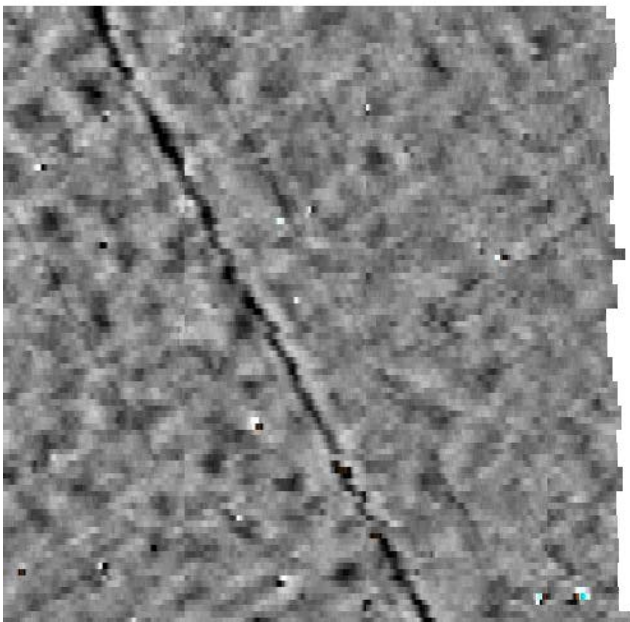
LOCATION OF SURVEY
GRIDS AND REFERENCING



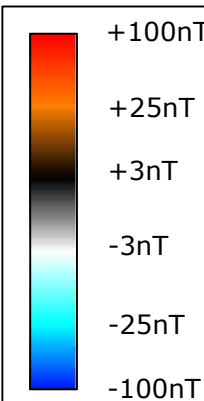
OS GRID REFERENCES

AK	508639.00, 365926.00
AL	508639.00, 365836.00

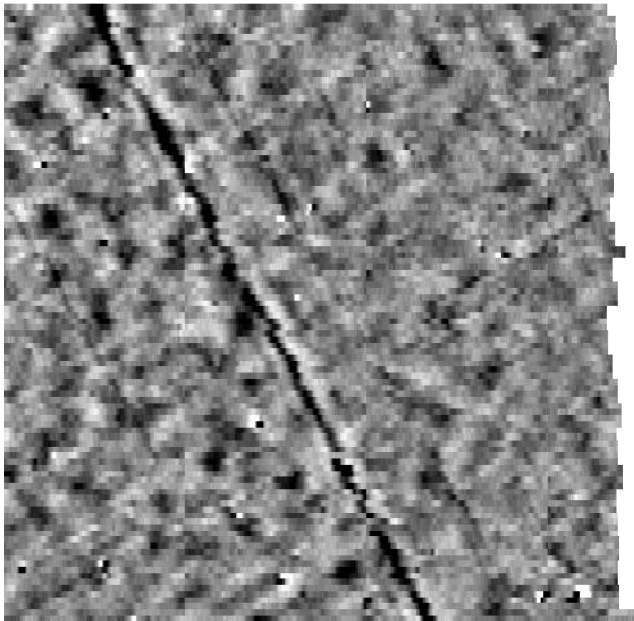
GRADIOMETER DATA
SHOWING EXTREME VALUES



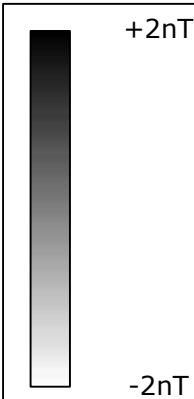
AREA 20



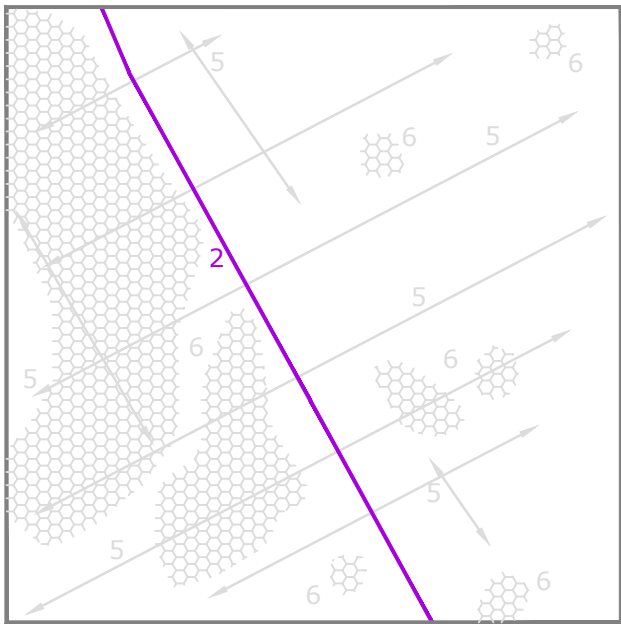
MINIMALLY PROCESSED
GRADIOMETER DATA



AREA 20



ABSTRACTION AND INTERPRETATION
OF GRADIOMETER ANOMALIES



AREA 20

Amendments

Issue No.	Date	Description
-	-	-
-	-	-

© Stratascan Ltd - 2014

KEY

PROBABLE ARCHAEOLOGY

	Positive anomaly / weak positive anomaly - probable cut feature of archaeological origin
	Negative anomaly / weak negative anomaly - probable bank or earthwork of archaeological origin
	Widely spaced curving parallel linear anomalies - probably related to ridge-and-furrow
	Linear anomaly related to former field boundary visible on mapping from 1888 to 1956
	Linear anomaly related to former field boundary not visible on available mapping

POSSIBLE ARCHAEOLOGY

	Positive anomaly / weak positive anomaly - possible cut feature of archaeological origin
	Negative anomaly / weak negative anomaly - possible bank or earthwork of archaeological origin
	Linear anomaly - Possible former field boundary

OTHER ANOMALIES

	Closely spaced parallel linear anomalies - related to agricultural activity such as ploughing or drains
	Linear anomaly - possibly related to land drain
	Magnetic disturbance associated with nearby metal object such as service or field boundary
	Strong magnetic debris - possible disturbed or made ground
	Scattered magnetic debris
	Area of amorphous magnetic variation - probable natural (e.g. geological or pedological) origin
	Magnetic spike - probable ferrous object

Client
CgMs CONSULTING LTD

Project Title
GEOPHYSICAL SURVEY - NOCTON FEN, NEAR BARDNEY, LINCOLNSHIRE

Job No. 7405
Subject
AREA 20

STRATASCAN™
GEOPHYSICS FOR ARCHAEOLOGY AND ENGINEERING
VINEYARD HOUSE T: 01684 592266
UPTON UPON SEVERN E: info@stratascan.co.uk
WR8 0SA www.stratascan.co.uk



Scale
1:1250
0m 10 20 30 40 50m

Plot A3	Checked by DGE	Issue No. 01
Survey date SEPT 14	Drawn by MU	Figure No. 21