

Reproduced from Ordnance Survey's 1:25 000 map of 1998 with the permission of the controller of Her Majesty's Stationary Office. Crown Copyright reserved. Licence: Stratascan Ltd. Vineyard House Upper Hook Road Upton Upon Severn WR8 0SA OS 100km square = TL



Amendments

Issue No.	Date	Description
-	-	-
-	-	-
© Stratascan Ltd - 2014		

Survey area

Site centred on NGR TL 283 749

OS REFERENCING INFORMATION

A	529523.95, 278788.06
B	529729.93, 278747.17
C	529882.90, 278747.38
D	529865.37, 278659.11

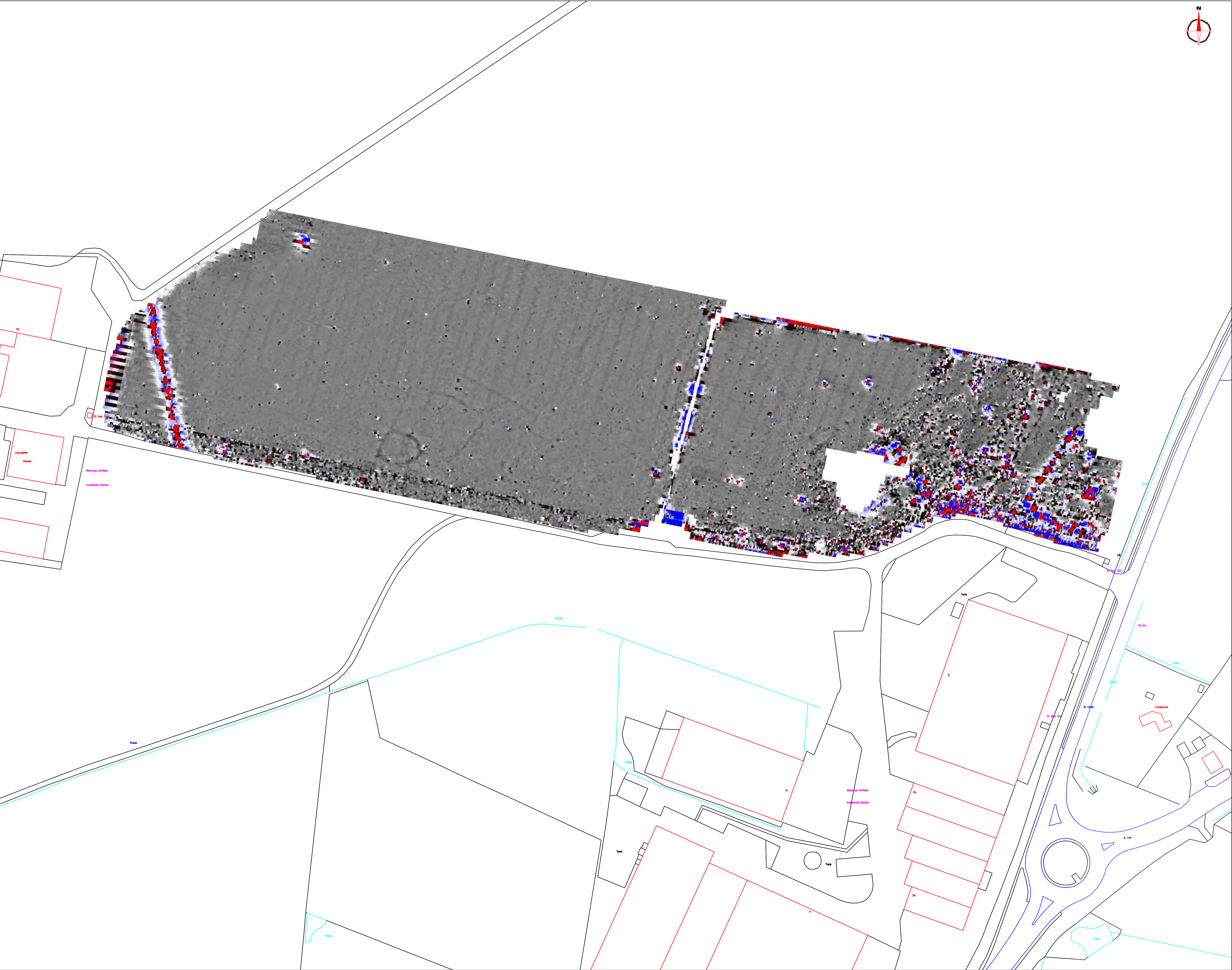
Job No.	7199	Survey Date	JULY 14
Client			
ALBION ARCHAEOLOGY			
Project Title			
GEOPHYSICAL SURVEY - WARBOYS AIRFIELD, CAMBS			
Subject			
SITE LOCATION AND SURVEY AREA & REFERENCING			

**STRATASCAN**<sup>TM</sup>  
GEOPHYSICS FOR ARCHAEOLOGY AND ENGINEERING  
VINEYARD HOUSE UPTON UPON SEVERN WR8 0SA  
T: 01684 592266 E: info@stratascan.co.uk www.stratascan.co.uk

**GPR ASSOCIATION**  
**SUMO**  
SUMO GROUP MEMBER

Scale	0m 10 20 30 40 50 60m		
1:1000			
Plot	A1	Checked by	DGE
Date	AUG 14	Drawn by	OJP
		Issue No.	01
		Figure No.	01





Amendments

Issue No.	Date	Description
-	-	-
-	-	-

© Stratascan Ltd - 2014

Plotting parameters

Maximum +100nT (red)  
Minimum -100nT (blue)

+100nT

+10nT

-10nT

-100nT

Job No.

7199

Survey Date

JULY 14

Client

ALBION ARCHAEOLOGY

Project Title

GEOPHYSICAL SURVEY -  
WARBOYS AIRFIELD, CAMBS

Subject

COLOUR PLOT OF MINIMALLY  
PROCESSED GRADIOMETER  
DATA SHOWING EXTREME  
VALUES

STRATASCAN™

GEOPHYSICS FOR ARCHAEOLOGY  
AND ENGINEERING

VINEYARD HOUSE  
UPTON UPON SEVERN  
WR8 0SA

T: 01684 592266  
E: info@stratascan.co.uk  
www.stratascan.co.uk

EUROPEAN  
GPR  
ASSOCIATION

SUMO  
GROUP  
MEMBER

ISO 9001  
certified

ISO 14001  
certified

ISO 14001  
certified

ISO 14001  
certified

Scale

1:1000

0m 10 20 30 40 50 60m

Plot

A1

Checked by

DGE

Issue No.

01

Date

AUG 14

Drawn by

OJP

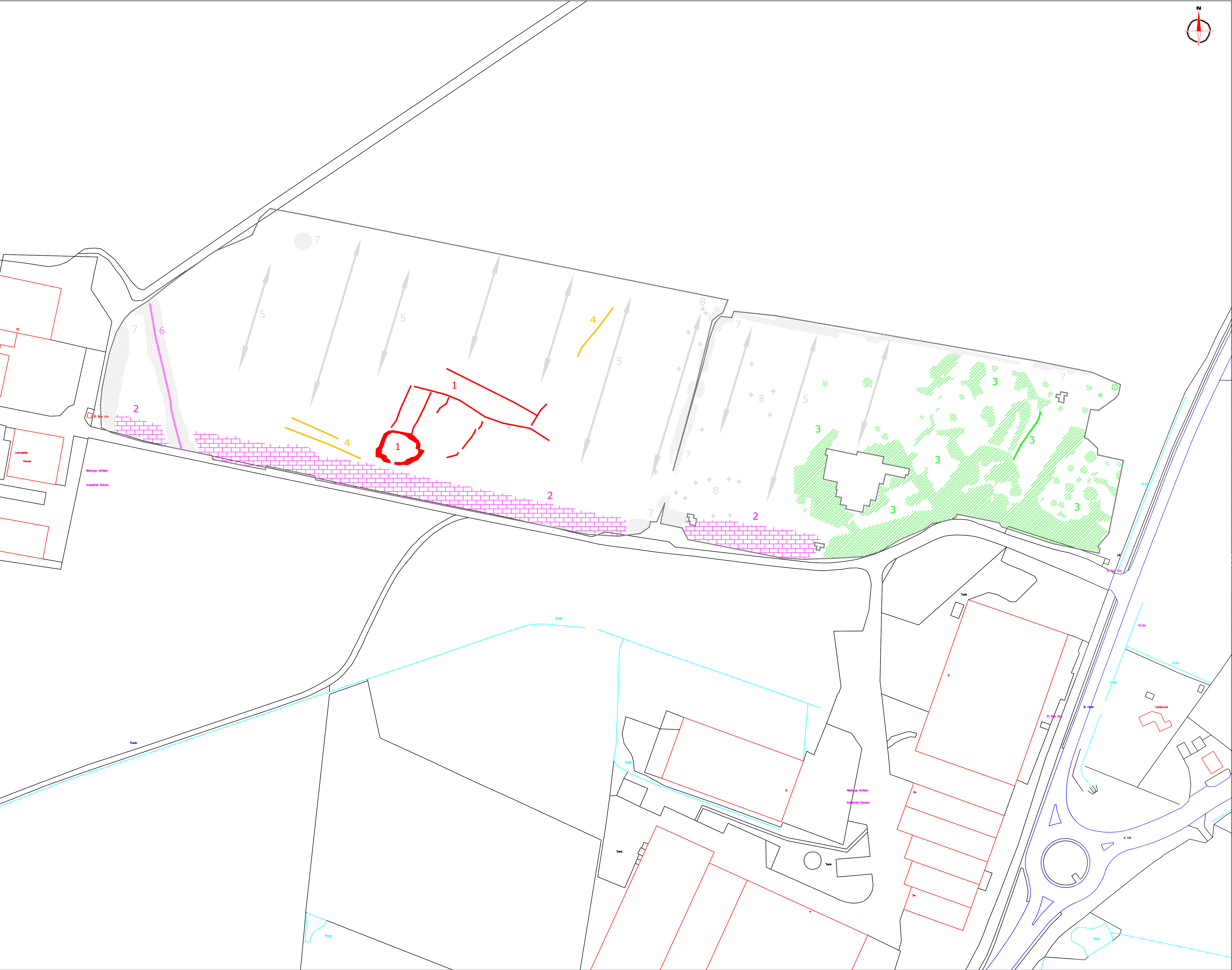
Figure No.

02









Amendments

Issue No.	Date	Description
-	-	-
-	-	-
© Stratascan Ltd - 2014		

KEY

PROBABLE ARCHAEOLOGY

Positive anomaly / weak positive anomaly - probable cut feature of archaeological origin

Negative anomaly / weak negative anomaly - probable bank or earthwork of archaeological origin

Strong magnetic anomaly related to demolition rubble from airfield buildings (visible on 1946 aerial photos)

Strong magnetic anomaly related to airfield perimeter track (visible on 1946 aerial photos)

POSSIBLE ARCHAEOLOGY

Positive anomaly / weak positive anomaly - possible cut feature of archaeological origin

Negative anomaly / weak negative anomaly - possible bank or earthwork of archaeological origin

Moderate strength discrete anomaly - possible thermoremanent feature

OTHER ANOMALIES

Closely spaced parallel linear anomalies - probably related to agricultural activity such as ploughing

Linear anomaly - probably related to pipe, cable or other modern service

Linear anomaly - possibly related to land drain

Magnetic disturbance associated with nearby metal object such as service or field boundary

Strong magnetic debris - possible disturbed or made ground

Scattered magnetic debris

Area of amorphous magnetic variation - probable natural (e.g. geological or pedological) origin

Magnetic spike - probable ferrous object

Job No.

7199

Survey Date

JULY 14

Client

ALBION ARCHAEOLOGY

Project Title

GEOPHYSICAL SURVEY - WARBOYS AIRFIELD, CAMBS

Subject

INTERPRETATION

STRATASCAN™

GEOPHYSICS FOR ARCHAEOLOGY AND ENGINEERING

VINEYARD HOUSE  
UPTON UPON SEVERN  
WR8 0SA

T: 01684 592266  
E: info@stratascan.co.uk  
www.stratascan.co.uk

EUROPEAN GPR ASSOCIATION

SUMO GROUP MEMBER

IMS ISO 9001 certified

ULAS ISO 14001 certified

IMS ISO 14001 certified

Scale

1:1000

0m 10 20 30 40 50 60m

Plot

A1

Checked by

DGE

Issue No.

01

Date

AUG 14

Drawn by

OJP

Figure No.

04