

Reproduced from Ordnance Survey's 1:25 000 map of 1998 with the permission of the controller of Her Majesty's Stationery Office.  
Crown Copyright reserved.  
Licence No: AL 50125A  
Licencee:  
Stratascan Ltd.  
Vineyard House  
Upper Hook Road  
Upton Upon Severn  
WR8 0SA  
OS 100km square = SO



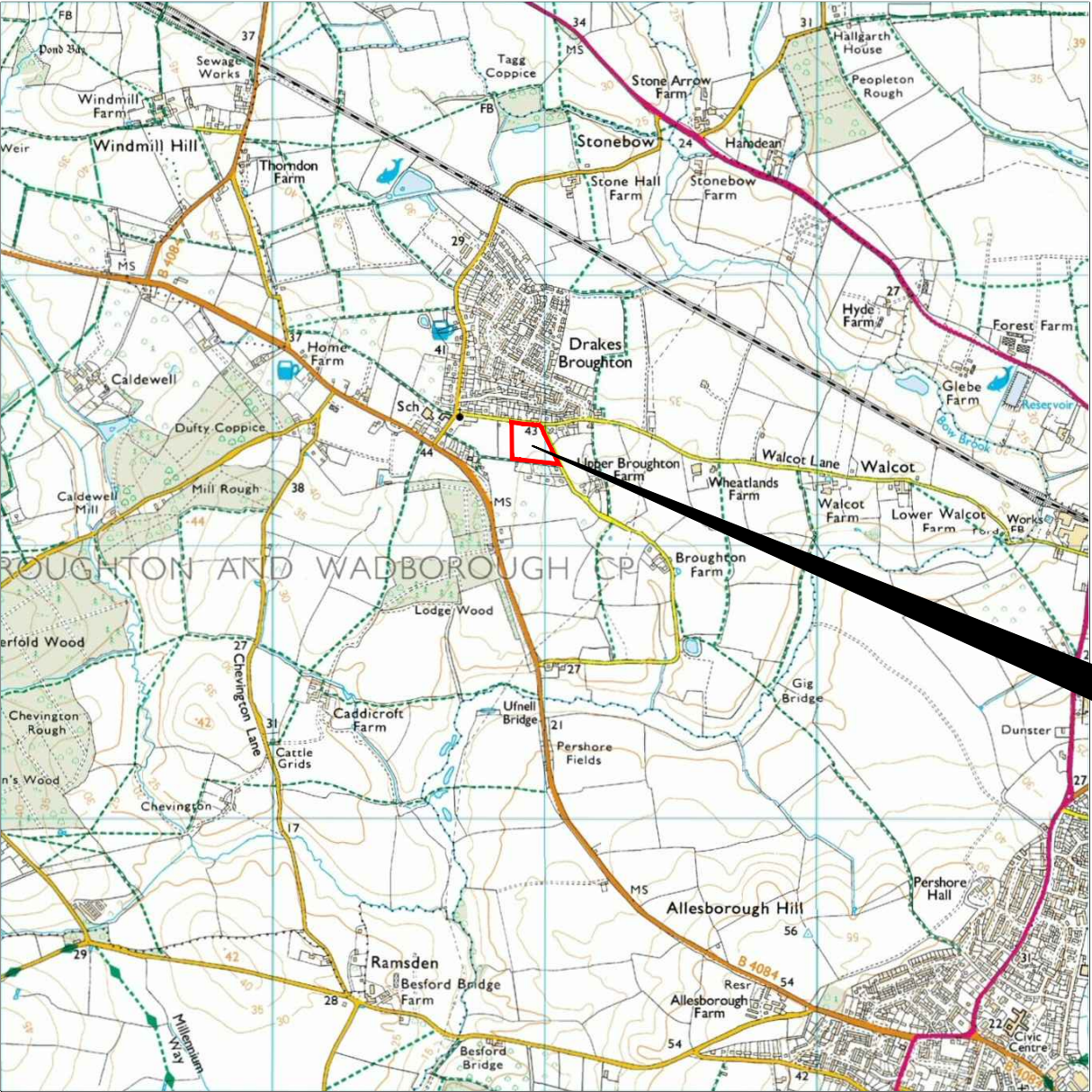
50

49

48

47

46



Survey Area

91

92

93

94

95

Amendments

Issue No.	Date	Description
-	-	-
-	-	-

© Stratascan Ltd - ----

Site centred on NGR SO 929 484

Client  
CROWN HOUSE DEVELOPMENTS LTD

Project Title Job No. J7055  
WALCOT MEADOW, WALCOT LANE,  
DRAKES BROUGHTON

Subject  
LOCATION PLAN OF SURVEY AREA

**STRATASCAN™**  
GEOPHYSICS FOR ARCHAEOLOGY  
AND ENGINEERING

VINEYARD HOUSE T: 01684 592266  
UPTON UPON SEVERN E: info@stratascan.co.uk  
WR8 0SA www.stratascan.co.uk

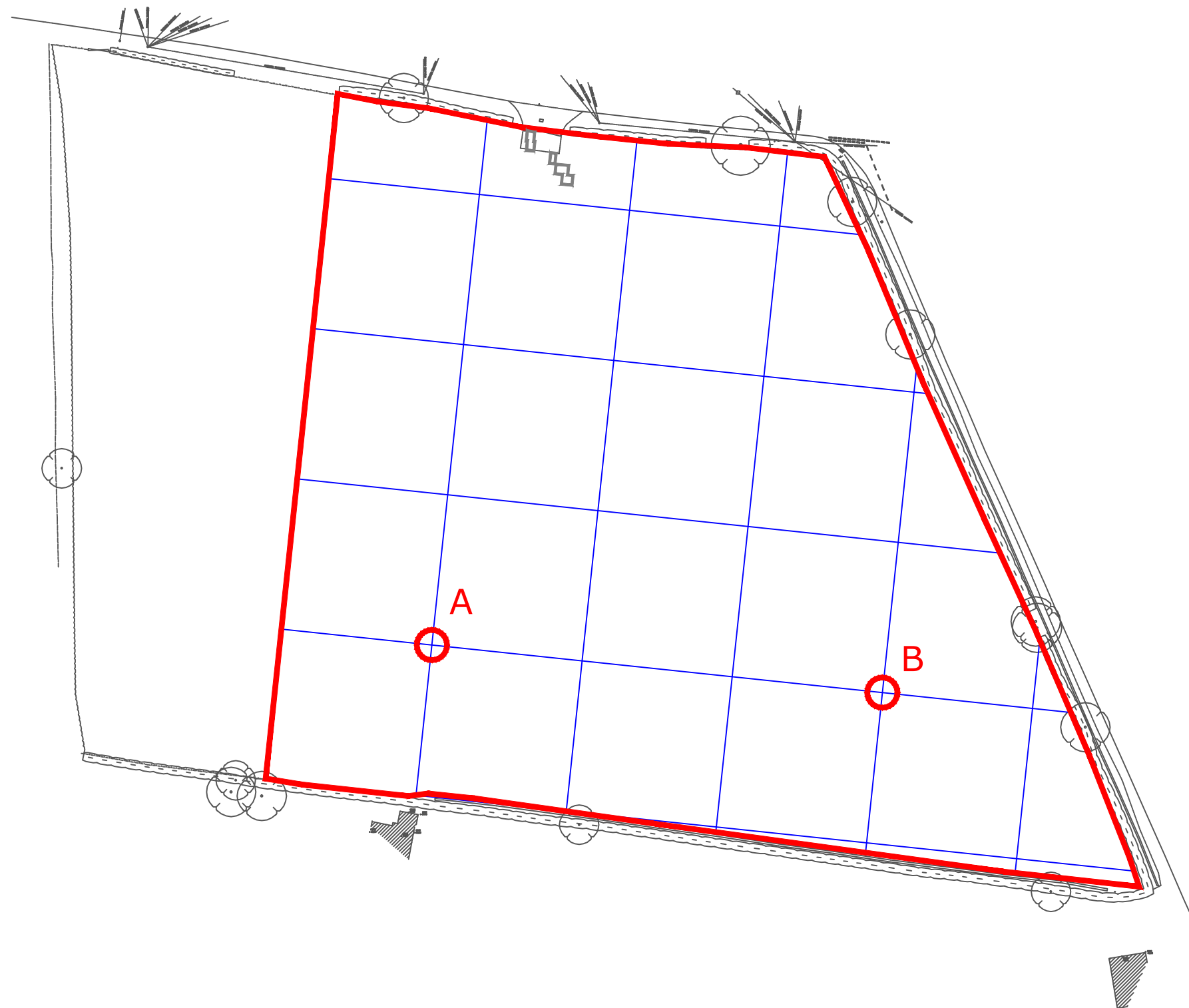
**EUROPEAN GPR ASSOCIATION**









**sumo** SUMO GROUP MEMBER

**IMS** ISO 9001 certified

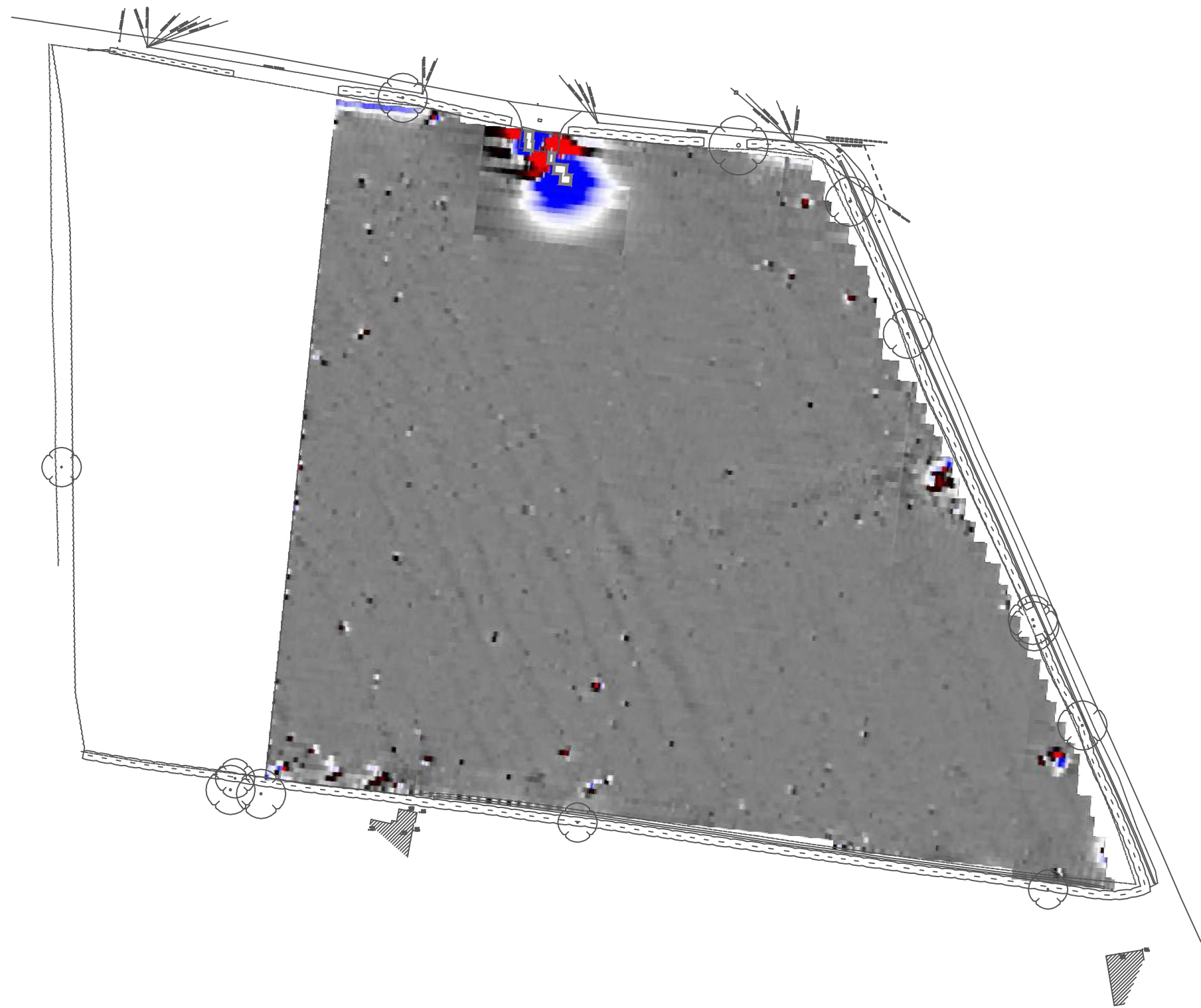
**UKAS** ISO 14001 certified

Scale	1:25000			
Plot	A3	Checked by	PPB	Issue No.
Survey date	JUNE 14	Drawn by	OJP	Figure No.
				01



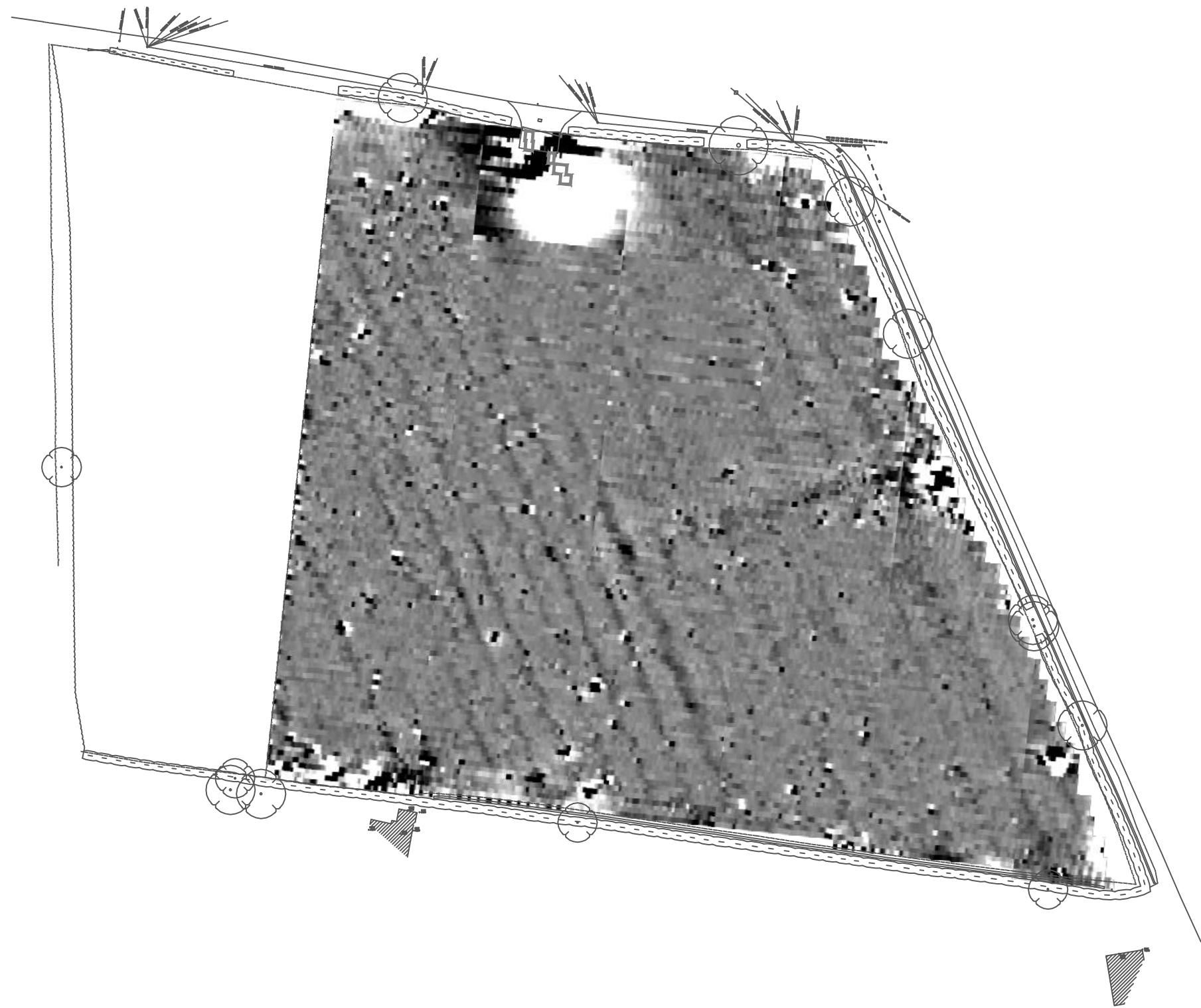
Amendments		
Issue No.	Date	Description
-	-	-
-	-	-
© Stratascan Ltd - ----		
OS GRID REFERENCES		
A	392906.06, 248345.55	
B	392995.56, 248336.11	
Client		
CROWN HOUSE DEVELOPMENTS LTD		
Project Title		Job No. J7055
WALCOT MEADOW, WALCOT LANE, DRAKES BROUGHTON		
Subject		
LOCATION OF SURVEY GRIDS AND REFERENCING		
 <p><b>STRATASCAN™</b> GEOPHYSICS FOR ARCHAEOLOGY AND ENGINEERING</p> <p>VINEYARD HOUSE T: 01684 592266 UPTON UPON SEVERN E: info@stratascan.co.uk WR8 0SA www.stratascan.co.uk</p> <div style="display: flex; justify-content: space-between; align-items: flex-start;"> <div style="text-align: center;">    </div> <div style="text-align: center;">     </div> <div style="text-align: center;">   </div> </div>		
Scale	0m 10 20 30 40 50	
1:1000		
Plot	Checked by	Issue No.
A3	PPB	01
Survey date	Drawn by	Figure No.
JUNE 14	OJP	02





Amendments

Issue No.	Date	Description
-	-	-
-	-	-
© Stratascan Ltd - ----		
Plotting parameters		<div><div></div><div>+100nT</div><div>+10nT</div><div>-10nT</div><div>-100nT</div></div>
Maximum +100nT (red)		
Minimum -100nT (blue)		
Client		
CROWN HOUSE DEVELOPMENTS LTD		
Project Title		Job No. J7055
WALCOT MEADOW, WALCOT LANE, DRAKES BROUGHTON		
Subject		
COLOUR PLOT OF GRADIOMETER DATA SHOWING EXTREME VALUES		
<div><div>STRATASCAN™</div><div>GEOPHYSICS FOR ARCHAEOLOGY AND ENGINEERING</div><div>VINEYARD HOUSE UPTON UPON SEVERN WR8 0SA</div><div>T: 01684 592266 E: info@stratascan.co.uk www.stratascan.co.uk</div></div>		
<div><div><div>EUROPEAN GPR ASSOCIATION</div><div>SUMO SURVEY SERVICES</div></div><div><div>REGISTERED ORGANISATION</div><div>IMS ISO 9001 certified</div><div>UKAS QUALITY MANAGEMENT 078</div><div>IMS ISO 14001 certified</div><div>UKAS ENVIRONMENTAL MANAGEMENT 078</div></div><div>SUMO GROUP MEMBER</div></div>		
Scale 1:1000 <div><div>0m</div><div>10</div><div>20</div><div>30</div><div>40</div><div>50</div></div>		
Plot	Checked by	Issue No.
A3	PPB	01
Survey date	Drawn by	Figure No.
JUNE 14	SRC	03



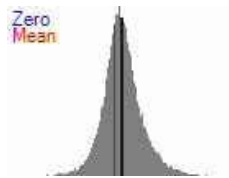
Amendments

Issue No.	Date	Description
-	-	-
-	-	-

© Stratascan Ltd - ----

Plotting parameters

Maximum +2nT (black)  
Minimum -2nT (white)



-2nT

+2nT



+2nT

-2nT

Client  
CROWN HOUSE DEVELOPMENTS LTD

Project Title  
WALCOT MEADOW, WALCOT LANE,  
DRAKES BROUGHTON

Job No. J7055

Subject  
PLOT OF MINIMALLY PROCESSED  
GRADIOMETER DATA

**STRATASCAN™**  
GEOPHYSICS FOR ARCHAEOLOGY  
AND ENGINEERING  
VINEYARD HOUSE T: 01684 592266  
UPTON UPON SEVERN E: info@stratascan.co.uk  
WR8 0SA www.stratascan.co.uk



SUMO  
GROUP  
MEMBER



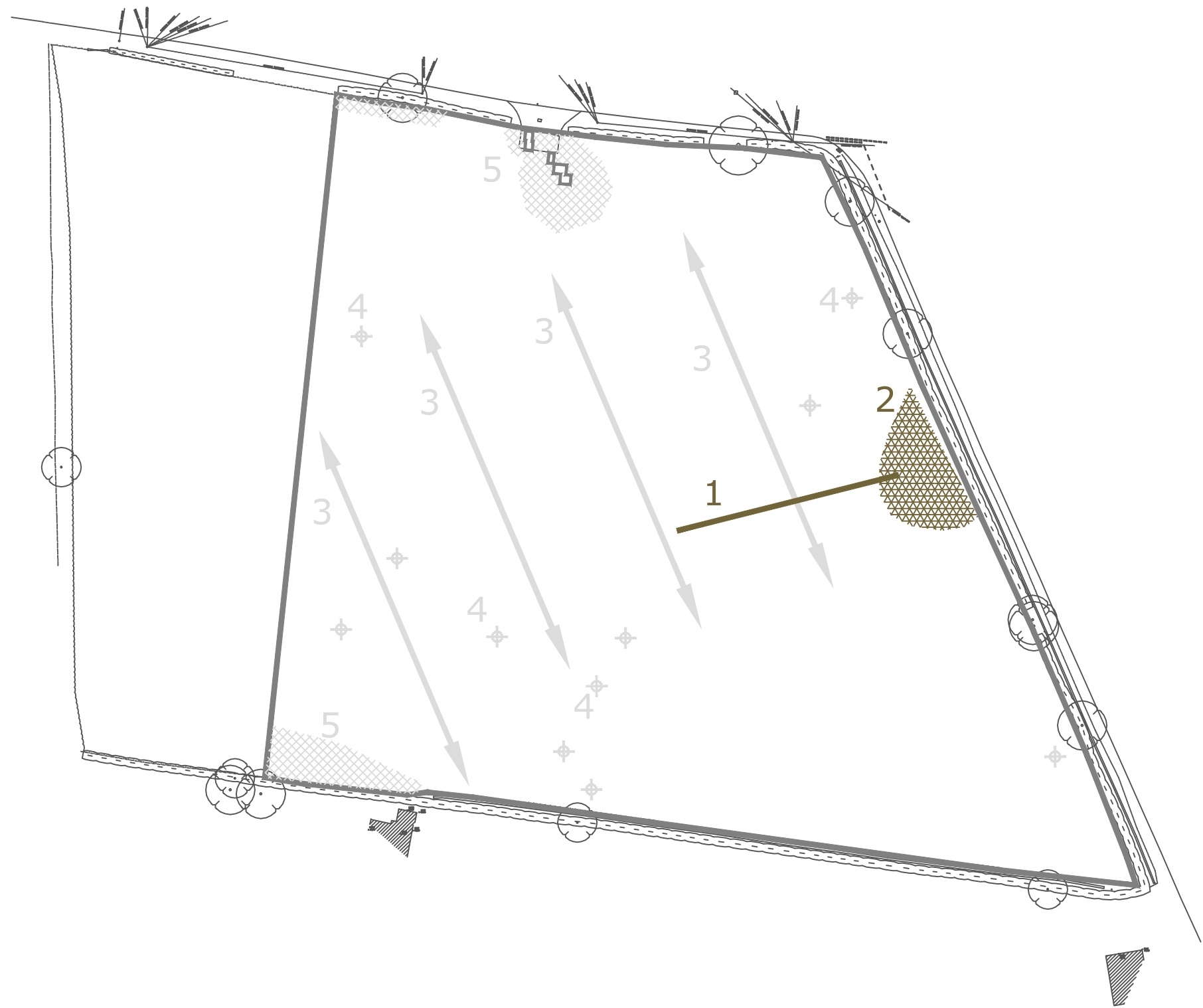
ims  
ISO 9001  
certified

ims  
ISO 14001  
certified



Scale 1:1000 0m 10 20 30 40 50

Plot A3	Checked by PPB	Issue No. 01
Survey date JUNE 14	Drawn by SRC	Figure No. 04



Amendments		
Issue No.	Date	Description
-	-	-
-	-	-
© Stratascan Ltd - ----		
KEY		
PROBABLE ARCHAEOLOGY		
	Positive anomaly / weak positive anomaly - probable cut feature of archaeological origin	
	Negative anomaly / weak negative anomaly - probable bank or earthwork of archaeological origin	
	Moderate strength discrete anomaly - probable thermoremanent feature	
	Widely spaced curving parallel linear anomalies - probably related to ridge-and-furrow	
POSSIBLE ARCHAEOLOGY		
	Positive anomaly / weak positive anomaly - possible cut feature of archaeological origin	
	Negative anomaly / weak negative anomaly - possible bank or earthwork of archaeological origin	
	Moderate strength discrete anomaly - possible thermoremanent feature	
OTHER ANOMALIES		
	Closely spaced parallel linear anomalies - probably related to agricultural activity such as ploughing	
	Linear anomaly - probably related to pipe, cable or other modern service	
	Linear anomaly - possibly related to land drain	
	Magnetic disturbance associated with metallic fences, services and farm machinery	
	Linear anomaly probably related to trackway associated with former structure (visible on 1945 aerial photo)	
	Magnetic disturbance related to a former structure (visible on 1945 aerial photo)	
	Area of amorphous magnetic variation - probable natural (e.g. geological or pedological) origin	
	Magnetic spike - probable ferrous object	
Client		
CROWN HOUSE DEVELOPMENTS LTD		
Project Title		
WALCOT MEADOW, WALCOT LANE, DRAKES BROUGHTON		
Job No. J7055		
Subject		
ABSTRACTION AND INTERPRETATION OF GRADIOMETER ANOMALIES		
GEOPHYSICS FOR ARCHAEOLOGY AND ENGINEERING		
VINEYARD HOUSE UPTON UPON SEVERN WR8 0SA		
T: 01684 592266 E: info@stratascan.co.uk www.stratascan.co.uk		
SUMO GROUP MEMBER		
Scale 1:1000		
Plot	Checked by	Issue No.
A3	PPB	01
Survey date	Drawn by	Figure No.
JUNE 14	SRC	05