

**GEOPHYSICAL SURVEY REPORT**

# **STRATASCAN™**



Project name:  
**Leiston, Suffolk**

HER Number:  
**ESF23212**

Client:  
**CgMs Consulting Ltd**

**September 2015**

Job ref:  
**J8862**

Report author:  
**Thomas Richardson MSc ACIfA**

# GEOPHYSICAL SURVEY REPORT

Project name:

**Leiston, Suffolk**

Client:

**CgMs Consulting Ltd**



Job ref:

**J8862**

Techniques:

**Detailed magnetic survey –  
Gradiometry**

Survey date:

**19th-21st August 2015**

Site centred at:

**TM 449 619**

Post code:

**IP16 4LQ**

Field team:

**Andrew Bateman** BSc (Hons)

**Richard Collins** BA (Hons)

**Suzanne Reeves** BSc (Hons)

Project manager:

**Simon Haddrell** BEng(Hons) AMBCS PCIfA

Report written By:

**Thomas Richardson** MSc ACIfA

CAD illustrations by:

**Thomas Richardson** MSc ACIfA

Checked by:

**David Elks** MSc ACIfA

## TABLE OF CONTENTS

<b>LIST OF FIGURES.....</b>	<b>2</b>
<b>1 SUMMARY OF RESULTS .....</b>	<b>3</b>
<b>2 INTRODUCTION .....</b>	<b>3</b>
2.1 Background synopsis.....	3
2.2 Site location .....	3
2.3 Description of site .....	3
2.4 Geology and soils .....	3
2.5 Site history and archaeological potential .....	3
2.6 Survey objectives .....	4
2.7 Survey methods .....	4
2.8 Processing, presentation and interpretation of results.....	4
2.8.1 Processing .....	4
2.8.2 Presentation of results and interpretation.....	4
<b>3 RESULTS.....</b>	<b>5</b>
3.1 Probable Archaeology.....	5
3.2 Possible Archaeology .....	5
3.3 Medieval/Post-Medieval Agriculture.....	5
3.4 Other Anomalies .....	5
<b>4 DATA APPRAISAL &amp; CONFIDENCE ASSESSMENT.....</b>	<b>6</b>
<b>5 CONCLUSION .....</b>	<b>6</b>
<b>6 REFERENCES .....</b>	<b>7</b>
<b>APPENDIX A – METHODOLOGY &amp; SURVEY EQUIPMENT .....</b>	<b>8</b>
<b>APPENDIX B – BASIC PRINCIPLES OF MAGNETIC SURVEY .....</b>	<b>9</b>
<b>APPENDIX C – GLOSSARY OF MAGNETIC ANOMALIES.....</b>	<b>10</b>

## LIST OF FIGURES

Figure 01	1:25 000	Location plan of survey area
Figure 02	1:1750	Location of survey grids and referencing
Figure 03	1:1750	Colour plot of gradiometer data showing extreme values – overview
Figure 04	1:1000	Colour plot of gradiometer data showing extreme values – north
Figure 05	1:1000	Colour plot of gradiometer data showing extreme values – south
Figure 06	1:1750	Plot of minimally processed gradiometer data – overview
Figure 07	1:1000	Plot of minimally processed gradiometer data – north
Figure 08	1:1000	Plot of minimally processed gradiometer data – south
Figure 09	1:1750	Abstraction and interpretation of gradiometer anomalies – overview
Figure 10	1:1000	Abstraction and interpretation of gradiometer anomalies – north
Figure 11	1:1000	Abstraction and interpretation of gradiometer anomalies – south

## 1 SUMMARY OF RESULTS

A detailed gradiometry survey was conducted over approximately 8.2 hectares of agricultural land. The survey has identified a former enclosure of unknown date. All of the other anomalies detected are modern in origin, relating to modern agricultural activity, ferrous objects, and fencing.

## 2 INTRODUCTION

### 2.1 *Background synopsis*

Stratascan were commissioned to undertake a geophysical survey of an area outlined for development. This survey forms part of an archaeological investigation being undertaken by CgMs Consulting Ltd.

### 2.2 *Site location*

The site is located to the south of Red House Lane, Leiston, Suffolk at OS ref. TM 449 619.

### 2.3 *Description of site*

The survey area is approximately 8.2 hectares of agricultural land. The area is generally flat with no obstructions.

### 2.4 *Geology and soils*

The underlying geology is Crag Group – Sand (British Geological Survey website). The drift geology is Lowestoft Formation – Clay and Silt across the west of the site, and Lowestoft Formation – Diamicton across the east (British Geological Survey website).

The overlying soils are known as Newport 4, which are typical brown soils. These consist of sandy soils and some very acidic soils (Soil Survey of England and Wales, Sheet 4 Eastern England).

### 2.5 *Site history and archaeological potential*

A search of the Suffolk Historic Environment Record (HER) (Suffolk County Council 2015) within 500m of the survey area has identified a small number of prehistoric and Roman records, although none are recorded within the survey area itself. A possible enclosure of unknown date (HER number MSF14092) is seen as a crop mark immediately east of the survey area. A Bronze Age cremation (HER number MSF27177) was discovered during excavation at a school approximately 400m north of the site. Roman activity is seen in the surrounding area in the form of a pottery scatter and a coin (HER numbers MSF23414 and MSF26845).

## 2.6 **Survey objectives**

The objective of the survey was to locate any features of possible archaeological origin in order that they may be assessed prior to development.

## 2.7 **Survey methods**

This report and all fieldwork have been conducted in accordance with both the English Heritage guidelines outlined in the document: *Geophysical Survey in Archaeological Field Evaluation, 2008* and with the Chartered Institute for Archaeologists document *Standard and Guidance for Archaeological Geophysical Survey*.

Due to the limited potential for prehistoric and Roman activity detailed magnetic survey (gradiometry) was used as an efficient and effective method of locating archaeological anomalies. More information regarding this technique is included in Appendix A.

## 2.8 **Processing, presentation and interpretation of results**

### 2.8.1 *Processing*

Processing is performed using specialist software. This can emphasise various aspects contained within the data but which are often not easily seen in the raw data. Basic processing of the magnetic data involves 'flattening' the background levels with respect to adjacent traverses and adjacent grids. Once the basic processing has flattened the background it is then possible to carry out further processing which may include low pass filtering to reduce 'noise' in the data and hence emphasise the archaeological or man-made anomalies.

The following schedule shows the basic processing carried out on all minimally processed gradiometer data used in this report:

- |                     |  |
|---------------------|--|
| 1. <i>Destripe</i>  | (Removes striping effects caused by zero-point discrepancies between different sensors and walking directions) |
| 2. <i>Destagger</i> | (Removes zigzag effects caused by inconsistent walking speeds on sloping, uneven or overgrown terrain)         |

### 2.8.2 *Presentation of results and interpretation*

The presentation of the data for each site involves a print-out of the minimally processed data both as a greyscale plot and a colour plot showing extreme magnetic values. Magnetic anomalies have been identified and plotted onto the 'Abstraction and Interpretation of Anomalies' drawing for the site.

### 3 RESULTS

The detailed magnetic gradiometer survey conducted at Leiston has an anomaly that has been characterised as being of a *probable* archaeological origin.

The difference between *probable* and *possible* archaeological origin is a confidence rating. Features identified within the dataset that form recognisable archaeological patterns or seem to be related to a deliberate historical act have been interpreted as being of a probable archaeological origin.

Features of possible archaeological origin tend to be more amorphous anomalies which may have similar magnetic attributes in terms of strength or polarity but are difficult to classify as being archaeological or natural.

The following list of numbered anomalies refers to numerical labels on the interpretation plots.

#### 3.1 *Probable Archaeology*

- 1 A positive curvilinear anomaly in the west of the site. This is indicative of a former cut feature, and probably relates to a former enclosure.

#### 3.2 *Possible Archaeology*

No possible archaeology has been identified within the survey area.

#### 3.3 *Medieval/Post-Medieval Agriculture*

- 2 Closely spaced parallel linear anomalies across the site. This is indicative of modern agricultural activity, such as ploughing.

#### 3.4 *Other Anomalies*

- 3 Areas of magnetic disturbance are the result of substantial nearby ferrous metal objects such as fences and underground services. These effects can mask weaker archaeological anomalies, but on this site have not affected a significant proportion of the area.

- 4 A number of magnetic 'spikes' (strong focussed values with associated antipolar response) indicate ferrous metal objects. These are likely to be modern rubbish.

## 4 DATA APPRAISAL & CONFIDENCE ASSESSMENT

Sand geologies of the Crag Group generally give poor responses to magnetic survey. The detection of a probable former enclosure suggests that the survey has been effective, however the generally unconducive geology means it is not possible to rule out weaker archaeological anomalies not being identified.

## 5 CONCLUSION

The survey at Leiston has identified a single anomaly of probable archaeological anomaly. The former enclosure seen in the west of the site is of unknown date, however it may relate to another enclosure seen as cropmarks to the east of the site (HER number MSF14092). All of the other anomalies detected are modern in origin. These relate to modern agricultural activity, ferrous objects, and fencing.



## 6 REFERENCES

British Geological Survey South Sheet, 1977. *Geological Survey Ten Mile Map, South Sheet First Edition (Quaternary)*. Institute of Geological Sciences.

British Geological Survey, 2001. *Geological Survey Ten Mile Map, South Sheet, Fourth Edition (Solid)*. British Geological Society.

British Geological Survey, n.d., *website*:  
(<http://www.bgs.ac.uk/opengeoscience/home.html?Accordion1=1#maps>) Geology of Britain viewer.

Chartered Institute For Archaeologists. *Standard and Guidance for Archaeological Geophysical Survey*.  
<http://www.archaeologists.net/sites/default/files/nodefiles/Geophysics2010.pdf>

English Heritage, 2008. *Geophysical Survey in Archaeological Field Evaluation*.

Soil Survey of England and Wales, 1983. *Soils of England and Wales, Sheet 4 Eastern England*.

Suffolk County Council, 2015. *Suffolk Historic Environment Record*. Available from  
[www.heritagegateway.org.uk](http://www.heritagegateway.org.uk) [Accessed on 09/09/2015]

## APPENDIX A – METHODOLOGY & SURVEY EQUIPMENT

### ***Grid locations***

The location of the survey grids has been plotted together with the referencing information. Grids were set out using a Leica 705auto Total Station and referenced to suitable topographic features around the perimeter of the site or a Leica Smart Rover RTK GPS.

An RTK GPS (Real-time Kinematic Global Positioning System) can locate a point on the ground to a far greater accuracy than a standard GPS unit. A standard GPS suffers from errors created by satellite orbit errors, clock errors and atmospheric interference, resulting in an accuracy of 5m-10m. An RTK system uses a single base station receiver and a number of mobile units. The base station re-broadcasts the phase of the carrier it measured, and the mobile units compare their own phase measurements with those they received from the base station. A SmartNet RTK GPS uses Ordnance Survey's network of over 100 fixed base stations to give an accuracy of around 0.01m.

### ***Survey equipment and gradiometer configuration***

Although the changes in the magnetic field resulting from differing features in the soil are usually weak, changes as small as 0.2 nanoTeslas (nT) in an overall field strength of 48,000nT, can be accurately detected using an appropriate instrument.

The mapping of the anomaly in a systematic manner will allow an estimate of the type of material present beneath the surface. Strong magnetic anomalies will be generated by buried iron-based objects or by kilns or hearths. More subtle anomalies such as pits and ditches can be seen if they contain more humic material which is normally rich in magnetic iron oxides when compared with the subsoil.

To illustrate this point, the cutting and subsequent silting or backfilling of a ditch may result in a larger volume of weakly magnetic material being accumulated in the trench compared to the undisturbed subsoil. A weak magnetic anomaly should therefore appear in plan along the line of the ditch.

The magnetic survey was carried out using a dual sensor Grad601-2 Magnetic Gradiometer manufactured by Bartington Instruments Ltd. The instrument consists of two fluxgates very accurately aligned to nullify the effects of the Earth's magnetic field. Readings relate to the difference in localised magnetic anomalies compared with the general magnetic background. The Grad601-2 consists of two high stability fluxgate gradiometers suspended on a single frame. Each gradiometer has a 1m separation between the sensing elements so enhancing the response to weak anomalies.

### ***Sampling interval***

Readings were taken at 0.25m centres along traverses 1m apart. This equates to 3600 sampling points in a full 30m x 30m grid.

### ***Depth of scan and resolution***

The Grad 601-2 has a typical depth of penetration of 0.5m to 1.0m, though strongly magnetic objects may be visible at greater depths. The collection of data at 0.25m centres provides an optimum methodology for the task balancing cost and time with resolution.

### ***Data capture***

The readings are logged consecutively into the data logger which in turn is daily down-loaded into a portable computer whilst on site. At the end of each site survey, data is transferred to the office for processing and presentation.

## APPENDIX B – BASIC PRINCIPLES OF MAGNETIC SURVEY

Detailed magnetic survey can be used to effectively define areas of past human activity by mapping spatial variation and contrast in the magnetic properties of soil, subsoil and bedrock.

Weakly magnetic iron minerals are always present within the soil and areas of enhancement relate to increases in *magnetic susceptibility* and permanently magnetised *thermoremanent* material.

Magnetic susceptibility relates to the induced magnetism of a material when in the presence of a magnetic field. This magnetism can be considered as effectively permanent as it exists within the Earth's magnetic field. Magnetic susceptibility can become enhanced due to burning and complex biological or fermentation processes.

Thermoremanence is a permanent magnetism acquired by iron minerals that, after heating to a specific temperature known as the Curie Point, are effectively demagnetised followed by re-magnetisation by the Earth's magnetic field on cooling. Thermoremanent archaeological features can include hearths and kilns and material such as brick and tile may be magnetised through the same process.

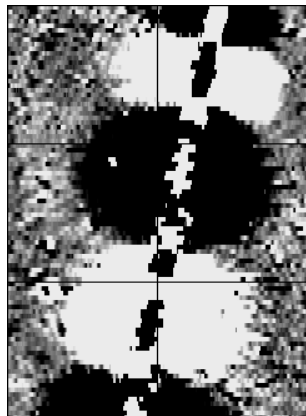
Silting and deliberate infilling of ditches and pits with magnetically enhanced soil creates a relative contrast against the much lower levels of magnetism within the subsoil into which the feature is cut. Systematic mapping of magnetic anomalies will produce linear and discrete areas of enhancement allowing assessment and characterisation of subsurface features. Material such as subsoil and non-magnetic bedrock used to create former earthworks and walls may be mapped as areas of lower enhancement compared to surrounding soils.

Magnetic survey is carried out using a fluxgate gradiometer which is a passive instrument consisting of two sensors mounted vertically 1m apart. The instrument is carried about 30cm above the ground surface and the top sensor measures the Earth's magnetic field whilst the lower sensor measures the same field but is also more affected by any localised buried field. The difference between the two sensors will relate to the strength of a magnetic field created by a buried feature, if no field is present the difference will be close to zero as the magnetic field measured by both sensors will be the same.

Factors affecting the magnetic survey may include soil type, local geology, previous human activity, disturbance from modern services etc.

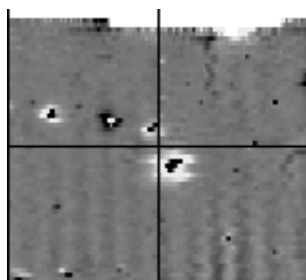
## APPENDIX C – GLOSSARY OF MAGNETIC ANOMALIES

### Bipolar



A bipolar anomaly is one that is composed of both a positive response and a negative response. It can be made up of any number of positive responses and negative responses. For example a pipeline consisting of alternating positive and negative anomalies is said to be bipolar. See also dipolar which has only one area of each polarity. The interpretation of the anomaly will depend on the magnitude of the magnetic field strength. A weak response may be caused by a clay field drain while a strong response will probably be caused by a metallic service.

### Dipolar

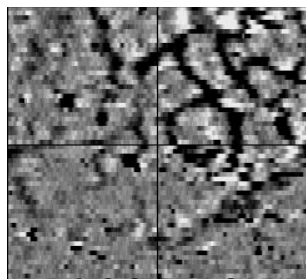


This consists of a single positive anomaly with an associated negative response. There should be no separation between the two polarities of response. These responses will be created by a single feature. The interpretation of the anomaly will depend on the magnitude of the magnetic measurements. A very strong anomaly is likely to be caused by a ferrous object.

### Positive anomaly with associated negative response

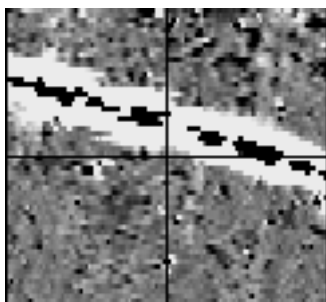
See bipolar and dipolar.

### Positive linear



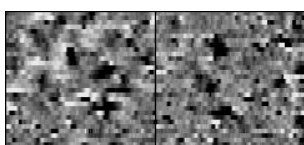
A linear response which is entirely positive in polarity. These are usually related to in-filled cut features where the fill material is magnetically enhanced compared to the surrounding matrix. They can be caused by ditches of an archaeological origin, but also former field boundaries, ploughing activity and some may even have a natural origin.

### Positive linear anomaly with associated negative response



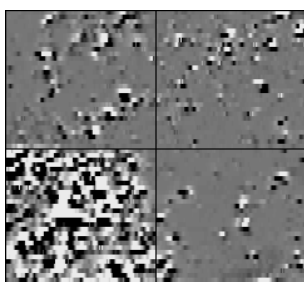
A positive linear anomaly which has a negative anomaly located adjacently. This will be caused by a single feature. In the example shown this is likely to be a single length of wire/cable probably relating to a modern service. Magnetically weaker responses may relate to earthwork style features and field boundaries.

### Positive point/area



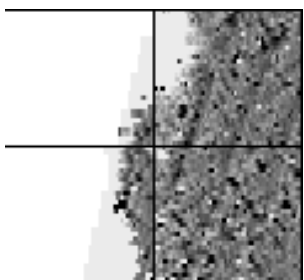
These are generally spatially small responses, perhaps covering just 3 or 4 reading nodes. They are entirely positive in polarity. Similar to positive linear anomalies they are generally caused by in-filled cut features. These include pits of an archaeological origin, possible tree bowls or other naturally occurring depressions in the ground.

### Magnetic debris



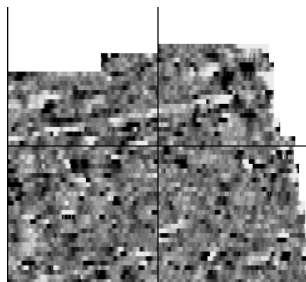
Magnetic debris consists of numerous dipolar responses spread over an area. If the amplitude of response is low ( $\pm 3nT$ ) then the origin is likely to represent general ground disturbance with no clear cause, it may be related to something as simple as an area of dug or mixed earth. A stronger anomaly ( $\pm 250nT$ ) is more indicative of a spread of ferrous debris. Moderately strong anomalies may be the result of a spread of thermoremanent material such as bricks or ash.

### Magnetic disturbance



Magnetic disturbance is high amplitude and can be composed of either a bipolar anomaly, or a single polarity response. It is essentially associated with magnetic interference from modern ferrous structures such as fencing, vehicles or buildings, and as a result is commonly found around the perimeter of a site near to boundary fences.

### Negative linear

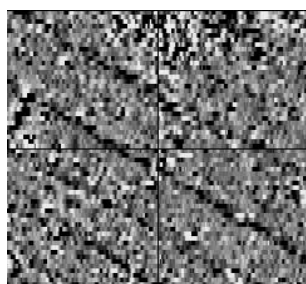


A linear response which is entirely negative in polarity. These are generally caused by earthen banks where material with a lower magnetic magnitude relative to the background top soil is built up. See also ploughing activity.

### Negative point/area

Opposite to positive point anomalies these responses may be caused by raised areas or earthen banks. These could be of an archaeological origin or may have a natural origin.

### Ploughing activity



Ploughing activity can often be visualised by a series of parallel linear anomalies. These can be of either positive polarity or negative polarity depending on site specifics. It can be difficult to distinguish between ancient ploughing and more modern ploughing. Clues such as the separation of each linear, straightness, strength of response and cross cutting relationships can be used to aid this, although none of these can be guaranteed to differentiate between different phases of activity.

### Polarity

Term used to describe the measurement of the magnetic response. An anomaly can have a positive polarity (values above 0nT) and/or a negative polarity (values below 0nT).

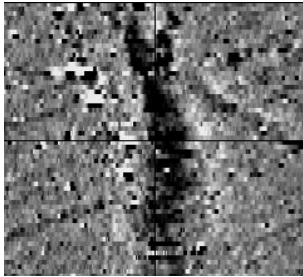
### Strength of response

The amplitude of a magnetic response is an important factor in assigning an interpretation to a particular anomaly. For example a positive anomaly covering a 10m<sup>2</sup> area may have values up to around 3000nT, in which case it is likely to be caused by modern magnetic interference. However, the same size and shaped anomaly but with values up to only 4nT may have a natural origin. Colour plots are used to show the amplitude of response.

### Thermoremanent response

A feature which has been subject to heat may result in it acquiring a magnetic field. This can be anything up to approximately +/-100 nT in value. These features include clay fired drains, brick, bonfires, kilns, hearths and even pottery. If the heat application has occurred in situ (e.g. a kiln) then the response is likely to be bipolar compared to if the heated objects have been disturbed and moved relative to each other, in which case they are more likely to take an irregular form and may display a debris style response (e.g. ash).

### Weak background variations



Weakly magnetic wide scale variations within the data can sometimes be seen within sites. These usually have no specific structure but can often appear curvy and sinuous in form. They are likely to be the result of natural features, such as soil creep, dried up (or seasonal) streams. They can also be caused by changes in the underlying geology or soil type which may contain unpredictable distributions of magnetic minerals, and are usually apparent in several locations across a site.



Reproduced from Ordnance Survey's 1:25 000 map of 1998 with the permission of the controller of Her Majesty's Stationery Office. Crown Copyright reserved. Licence No: AL 50125A  
Licencee:  
Stratascan Ltd.  
Vineyard House  
Upper Hook Road  
Upton Upon Severn  
WR8 0SA  
OS 100km square = TM



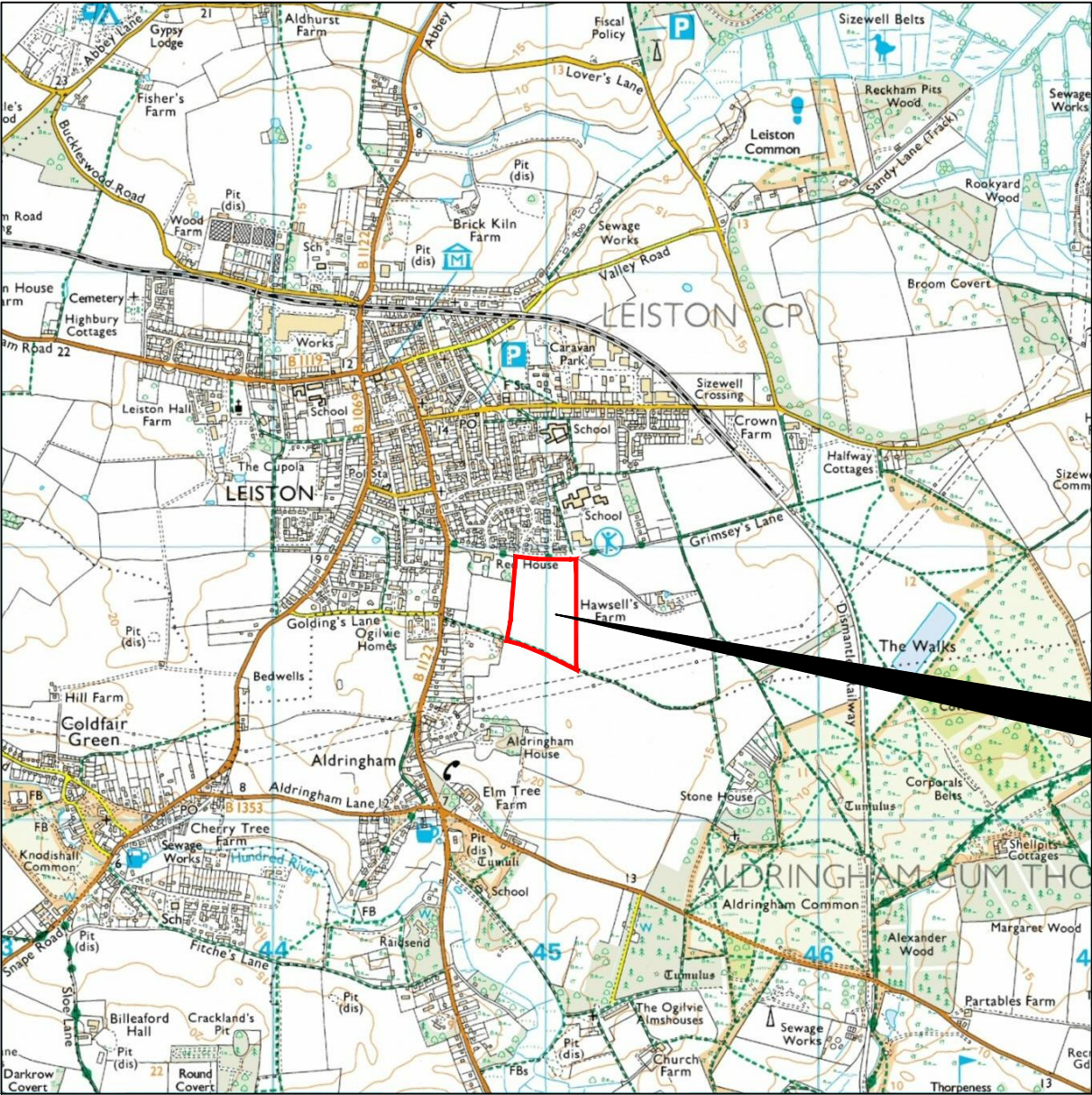
64

63

62

61

60



43

44

45

46

47

Amendments

Issue No.	Date	Description
-	-	-
-	-	-

© Stratascan Ltd - ----



Site centred on NGR TM 449 619

Client  
CgMs CONSULTING LTD

Project Title Job No. J8862  
LEISTON, SUFFOLK

Subject  
LOCATION PLAN OF SURVEY AREA

**STRATASCAN**™  
GEOPHYSICS FOR ARCHAEOLOGY  
AND ENGINEERING  
VINEYARD HOUSE T: 01684 592266  
UPTON UPON SEVERN E: info@stratascan.co.uk  
WR8 0SA www.stratascan.co.uk

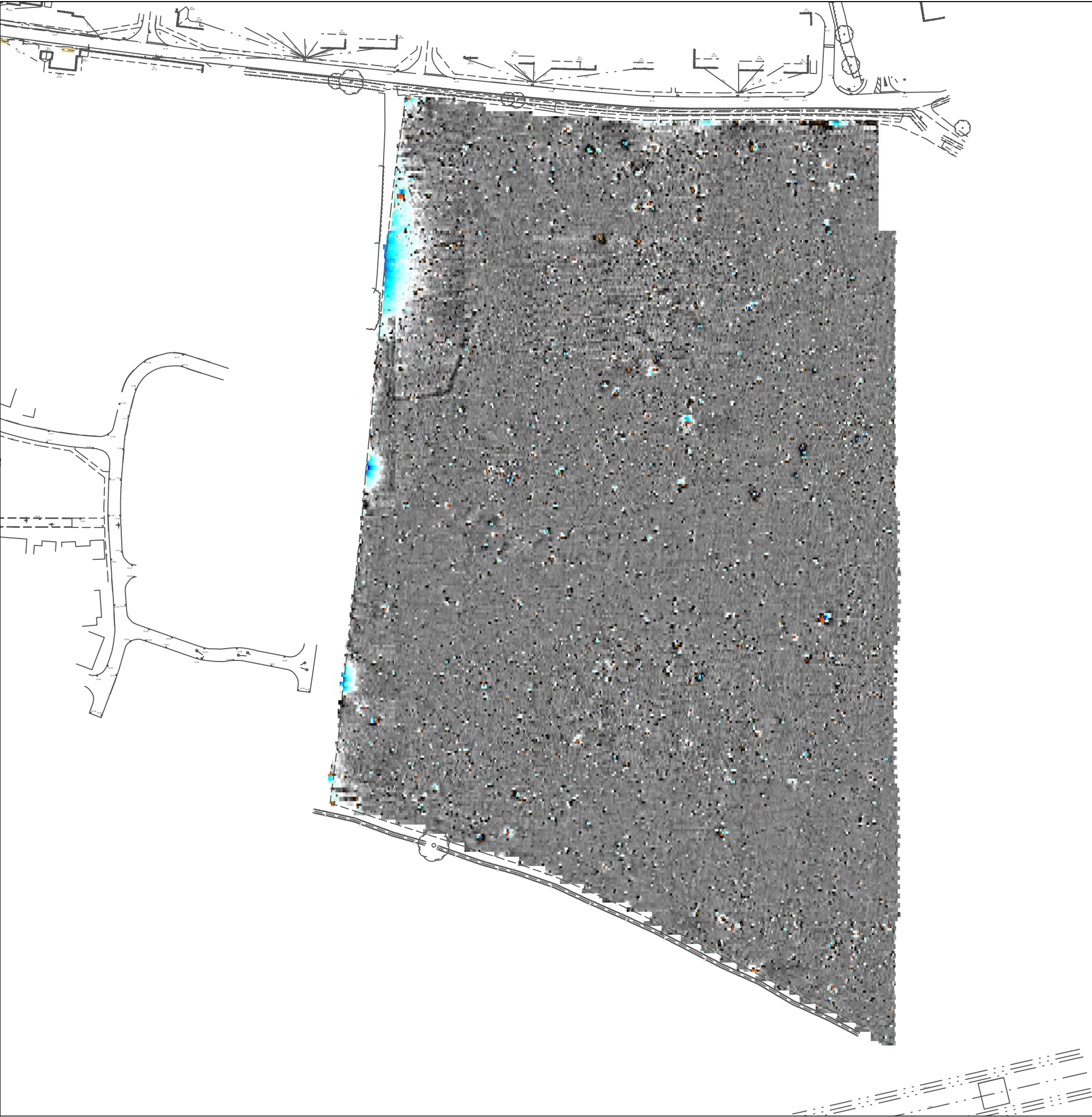


Scale 1:25000 0m 500 1000m

Plot A3	Checked by DGE	Issue No. 01
Survey date AUG 15	Drawn by TR	Figure No. 01



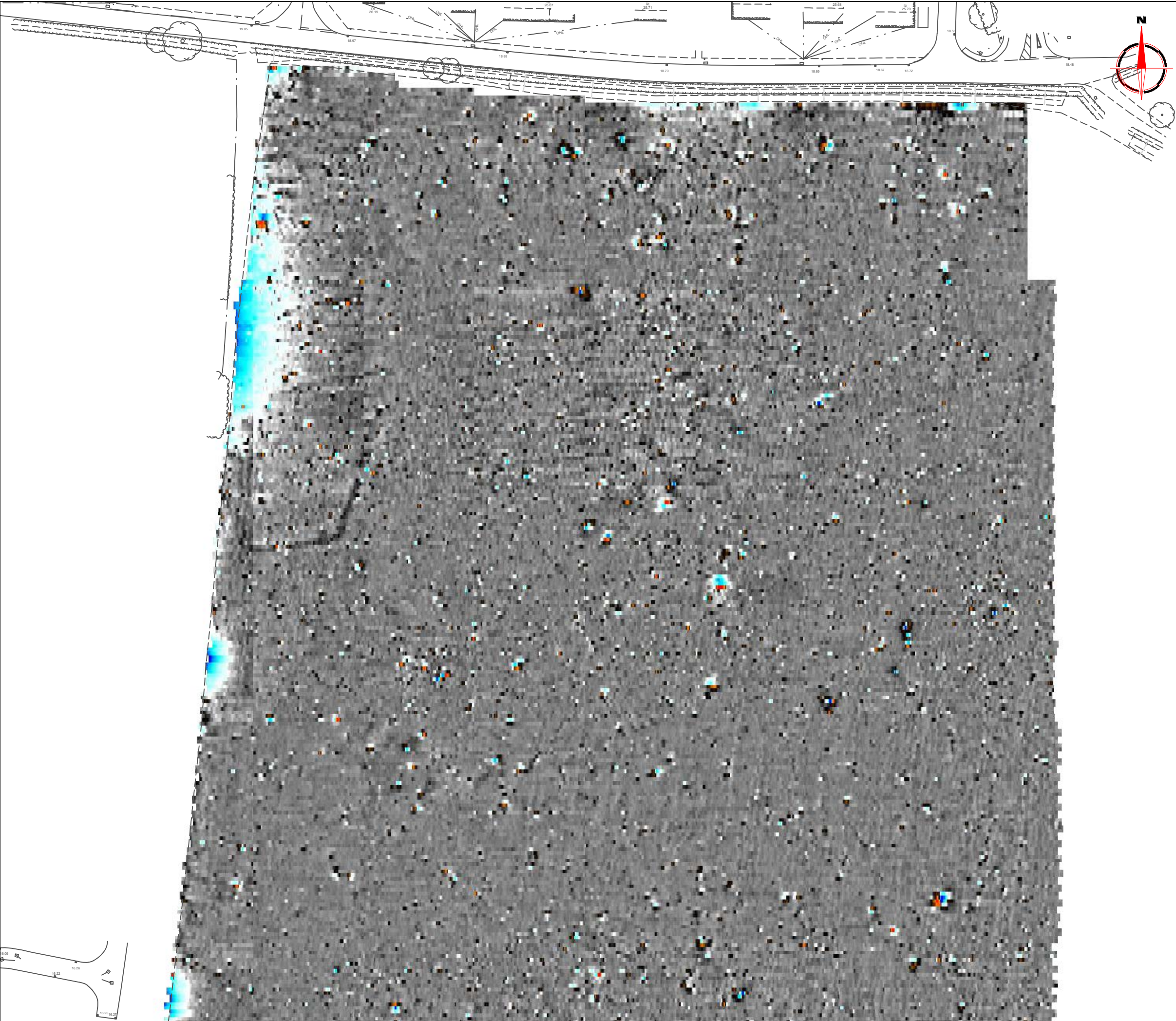




Amendments

Issue No.	Date	Description
-	-	-
-	-	-
© Stratascan Ltd - ----		
Plotting parameters		<div><div></div><div>+100nT</div><div>+25nT</div><div>+3nT</div><div>-3nT</div><div>-25nT</div><div>-100nT</div></div>
Maximum +100nT (red)		
Minimum -100nT (blue)		
Client		
CgMs CONSULTING LTD		
Project Title		Job No. J8862
LEISTON, SUFFOLK		
Subject		
COLOUR PLOT OF GRADIOMETER DATA SHOWING EXTREME VALUES - OVERVIEW		
<div><div>STRATASCAN™</div><div>GEOPHYSICS FOR ARCHAEOLOGY AND ENGINEERING</div><div>VINEYARD HOUSE UPTON UPON SEVERN WR8 0SA</div><div>T: 01684 592266 E: info@stratascan.co.uk www.stratascan.co.uk</div></div>		
<div><div><div><div>EUROPEAN GPR ASSOCIATION</div><div>SUMO Survey Services</div></div><div><div>REGISTERED ORGANISATION</div><div>IMS ISO 9001 certified</div><div>UKAS QUALITY 078</div><div>IMS ISO 14001 certified</div><div>UKAS ENVIRONMENTAL 078</div></div><div>SUMO GROUP MEMBER</div></div></div>		
Scale 1:1750 <div>0m 10 20 30 40 50m</div>		
Plot A3	Checked by DGE	Issue No. 01
Survey date AUG 15	Drawn by TR	Figure No. 03

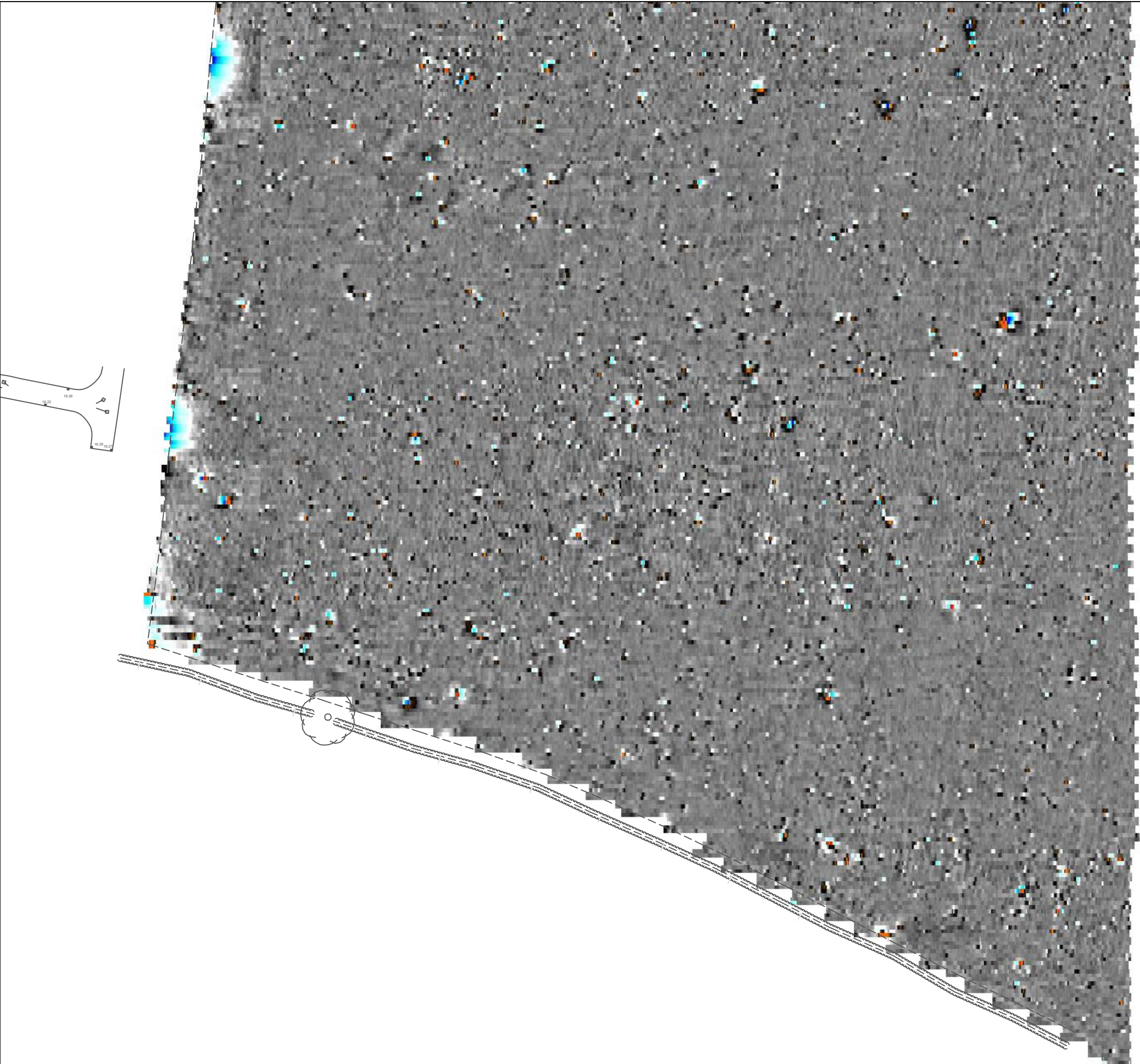




Amendments

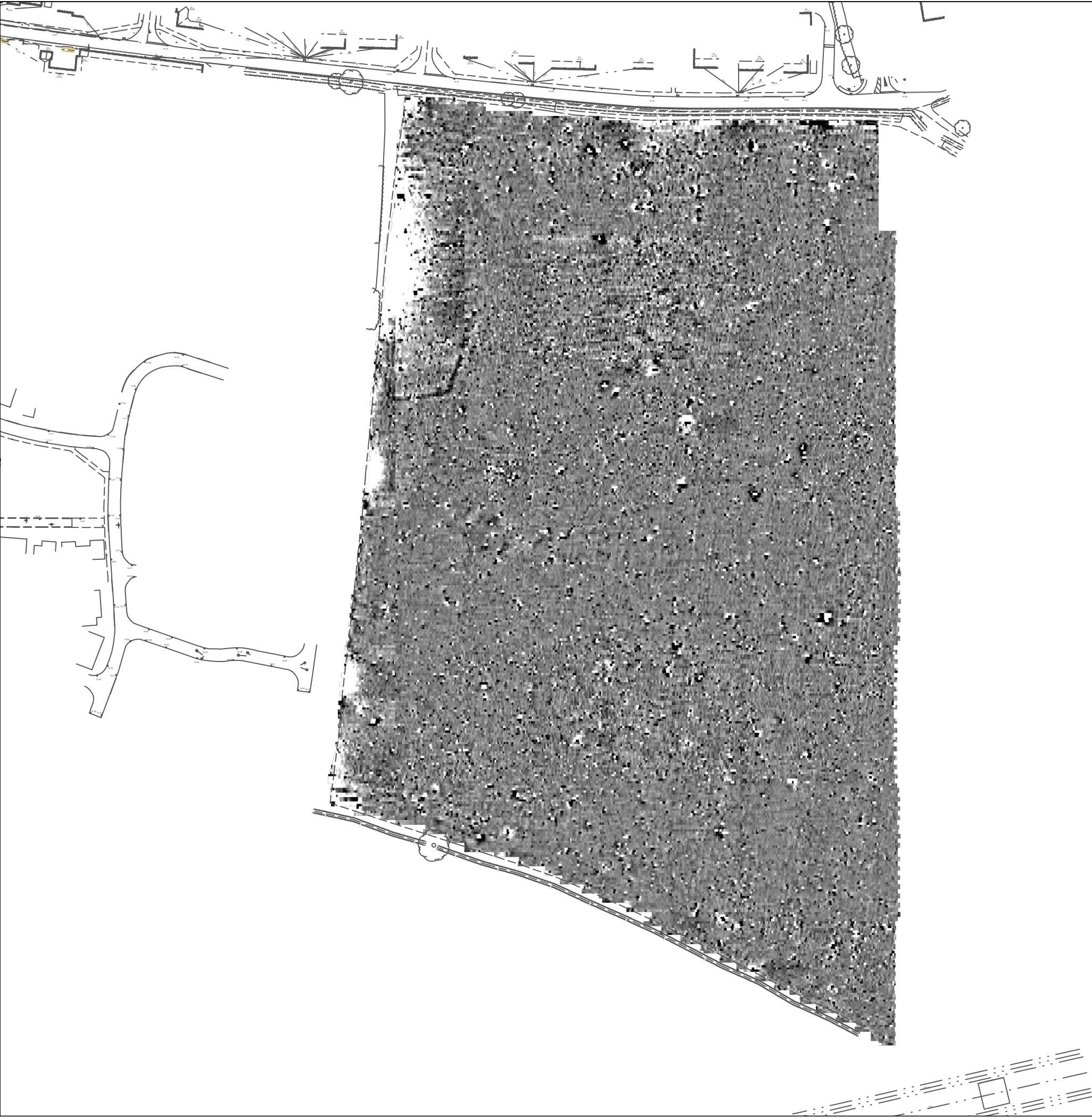
Issue No.	Date	Description
-	-	-
-	-	-
© Stratascan Ltd - ----		
Plotting parameters		
Maximum +100nT (red)		+100nT
Minimum -100nT (blue)		-100nT
Client		
CgMs CONSULTING LTD		
Project Title		Job No. J8862
LEISTON, SUFFOLK		
Subject		
COLOUR PLOT OF GRADIOMETER DATA SHOWING EXTREME VALUES - NORTH		
STRATASCAN™		
GEOPHYSICS FOR ARCHAEOLOGY AND ENGINEERING		
VINEYARD HOUSE UPTON UPON SEVERN WR8 0SA		
T: 01684 592266 E: info@stratascan.co.uk www.stratascan.co.uk		
GPR ASSOCIATION		
SUMO GROUP MEMBER		
IMS ISO 9001 certified		
UKAS ISO 14001 certified		
Scale 1:1000		
0m 10 20 30 40 50		
Plot A3	Checked by DGE	Issue No. 01
Survey date AUG 15	Drawn by TR	Figure No. 04





Amendments		
Issue No.	Date	Description
-	-	-
-	-	-
© Stratascan Ltd - ----		
Plotting parameters		<div><div></div><div>+100nT</div><div>+25nT</div><div>+3nT</div><div>-3nT</div><div>-25nT</div><div>-100nT</div></div>
Maximum +100nT (red)		
Minimum -100nT (blue)		
Client		
CgMs CONSULTING LTD		
Project Title		Job No. J8862
LEISTON, SUFFOLK		
Subject		
COLOUR PLOT OF GRADIOMETER DATA SHOWING EXTREME VALUES - SOUTH		
<div><div>STRATASCAN™</div><div>GEOPHYSICS FOR ARCHAEOLOGY AND ENGINEERING</div><div>VINEYARD HOUSE UPTON UPON SEVERN WR8 0SA</div><div>T: 01684 592266 E: info@stratascan.co.uk www.stratascan.co.uk</div></div>		
<div><div><div>EUROPEAN GPR ASSOCIATION</div><div>SUMO</div><div>SURVEY SERVICES</div></div><div>SUMO GROUP MEMBER</div><div><div>ims</div><div>ISO 9001 certified</div></div><div><div>UKAS</div><div>QUALITY MANAGEMENT</div><div>078</div></div><div><div>ims</div><div>ISO 14001 certified</div></div><div><div>UKAS</div><div>ENVIRONMENTAL MANAGEMENT</div><div>078</div></div><div><div>REGISTERED ORGANISATION</div></div></div>		
Scale 1:1000 <div><div>0m</div><div>10</div><div>20</div><div>30</div><div>40</div><div>50</div></div>		
Plot	Checked by	Issue No.
A3	DGE	01
Survey date	Drawn by	Figure No.
AUG 15	TR	05





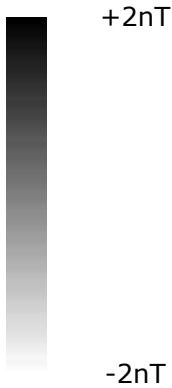
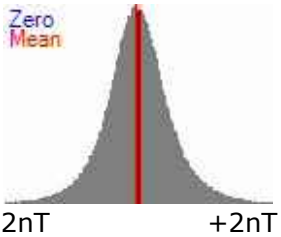
Amendments

Issue No.	Date	Description
-	-	-
-	-	-

© Stratascan Ltd - ----

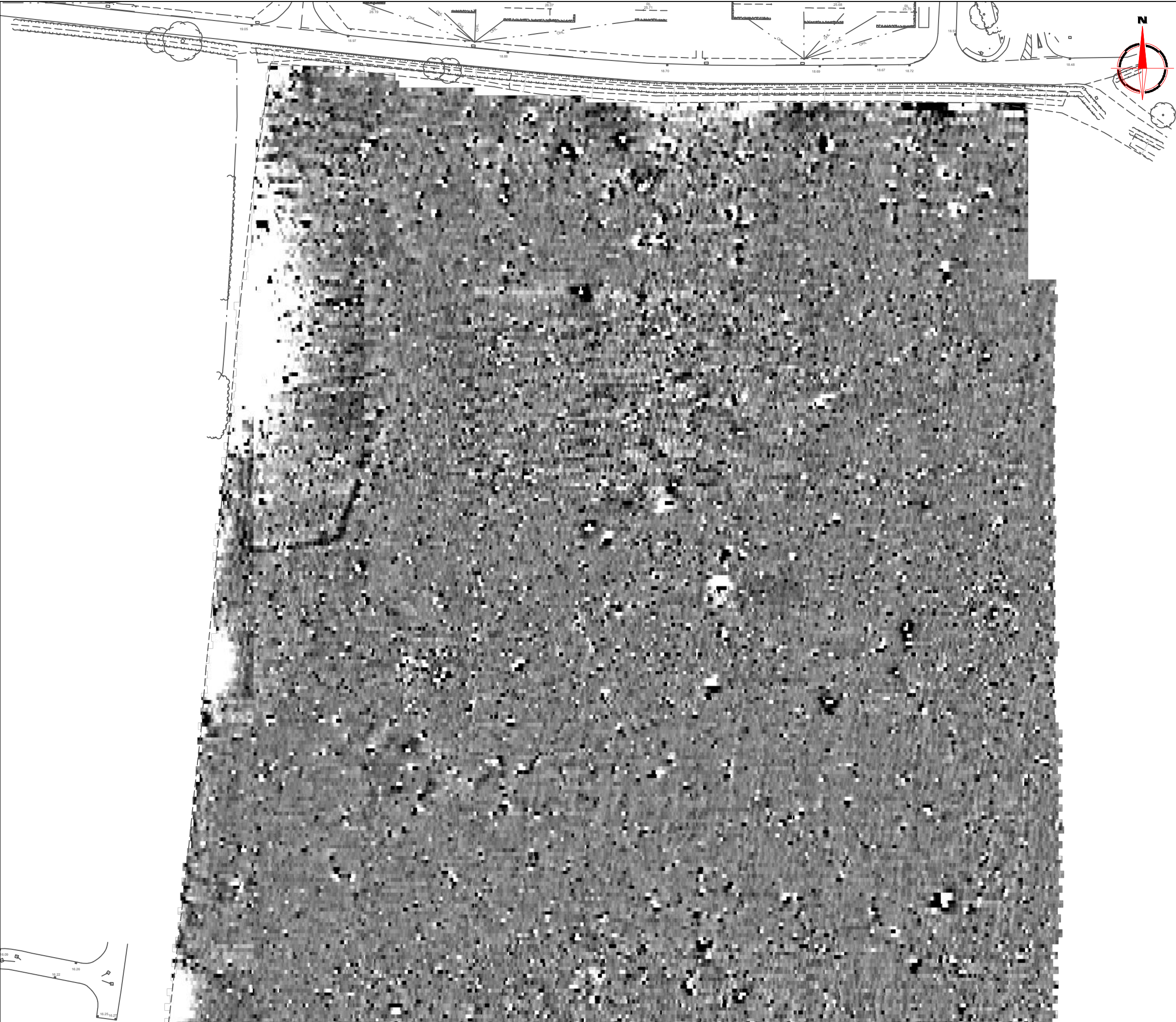
Plotting parameters

Maximum +2nT (black)  
Minimum -2nT (white)



Client		
CgMs CONSULTING LTD		
Project Title		Job No. J8862
LEISTON, SUFFOLK		
Subject		
PLOT OF MINIMALLY PROCESSED GRADIOMETER DATA - OVERVIEW		
<div><div>STRATASCAN™</div><div>GEOPHYSICS FOR ARCHAEOLOGY AND ENGINEERING</div><div>VINEYARD HOUSE UPTON UPON SEVERN WR8 0SA</div><div>T: 01684 592266 E: info@stratascan.co.uk www.stratascan.co.uk</div></div>		
<div><div><div><div>EUROPEAN GPR ASSOCIATION</div><div>SUMOSurvey Services</div></div><div><div>REGISTERED ORGANISATION</div><div>IMS ISO 9001 certified</div><div>UKAS MANAGEMENT SYSTEMS</div><div>IMS ISO 14001 certified</div><div>UKAS ENVIRONMENTAL MANAGEMENT</div></div><div>SUMO GROUP MEMBER</div></div></div>		
Scale 1:1750 0m 10 20 30 40 50m		
Plot A3	Checked by DGE	Issue No. 01
Survey date AUG 15	Drawn by TR	Figure No. 06





Amendments

Issue No.	Date	Description
-	-	-
-	-	-

© Stratascan Ltd - ----

Plotting parameters

Maximum +2nT (black)  
Minimum -2nT (white)

Zero  
Mean

-2nT+2nT

+2nT

-2nT

Client

CgMs CONSULTING LTD

Project Title

Job No.

J8862

LEISTON, SUFFOLK

Subject

PLOT OF MINIMALLY PROCESSED  
GRADIOMETER DATA - NORTH

STRATASCAN™

GEOPHYSICS FOR ARCHAEOLOGY  
AND ENGINEERING

VINEYARD HOUSE  
UPTON UPON SEVERN  
WR8 0SA

T: 01684 592266  
E: info@stratascan.co.uk  
www.stratascan.co.uk

SUMO  
GROUP  
MEMBER

Scale

1:1000

0m

10

20

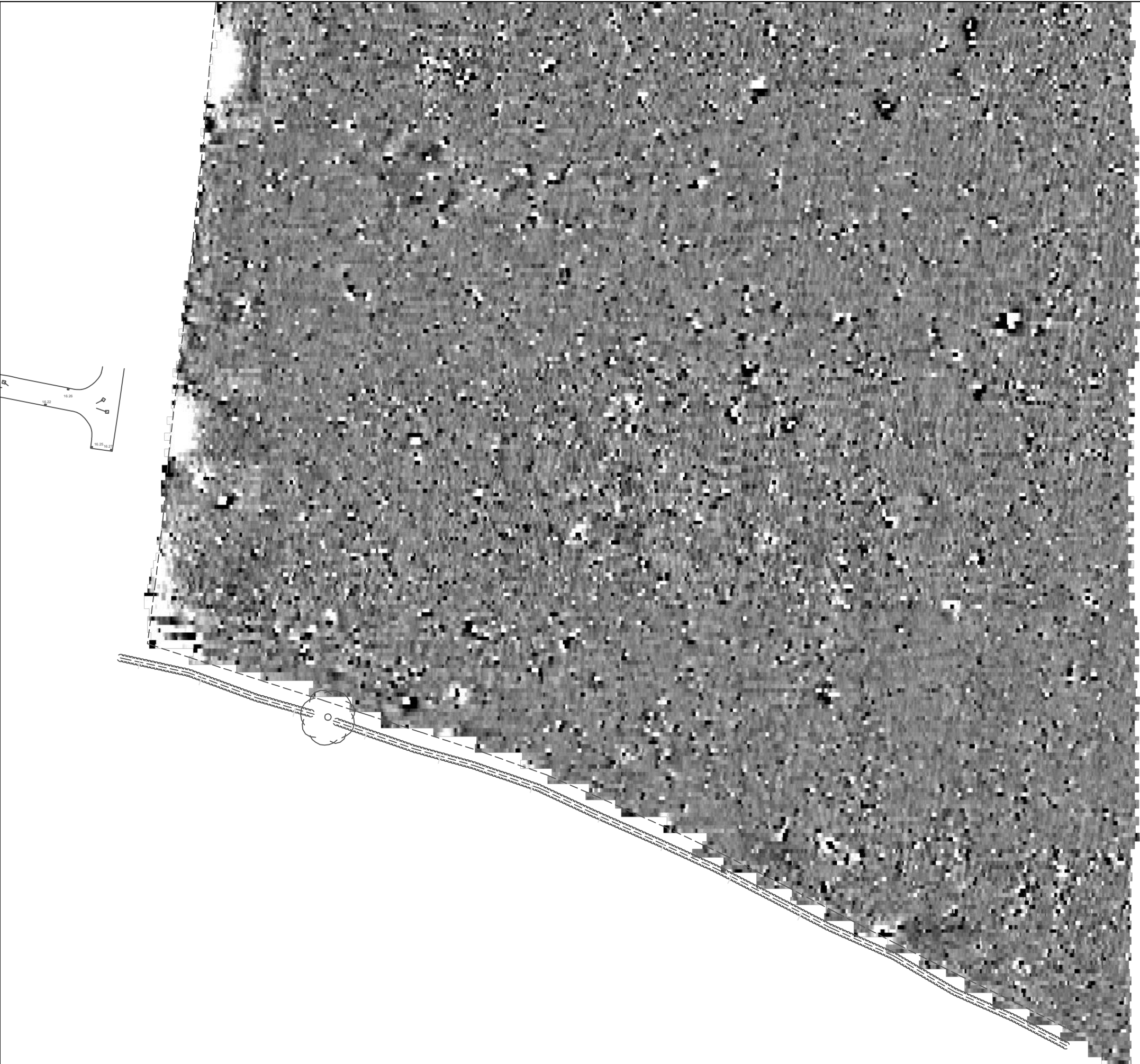
30

40

50

Plot	A3	Checked by	DGE	Issue No.	01
Survey date	AUG 15	Drawn by	TR	Figure No.	07





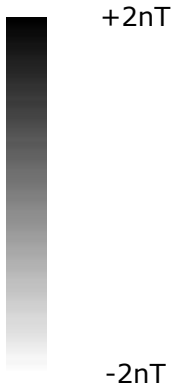
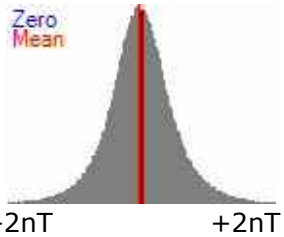
Amendments

Issue No.	Date	Description
-	-	-
-	-	-

© Stratascan Ltd - ----

Plotting parameters

Maximum +2nT (black)  
Minimum -2nT (white)



Client

CgMs CONSULTING LTD

Project Title


Job No.








J8862

LEISTON, SUFFOLK

Subject

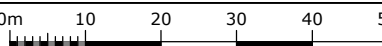
PLOT OF MINIMALLY PROCESSED GRADIOMETER DATA - SOUTH

**STRATASCAN™**  
GEOPHYSICS FOR ARCHAEOLOGY AND ENGINEERING  
VINEYARD HOUSE UPTON UPON SEVERN WR8 0SA  
T: 01684 592266  
E: info@stratascan.co.uk  
www.stratascan.co.uk



Scale

1:1000



Plot

A3

Checked by

DGE

Issue No.

01

Survey date

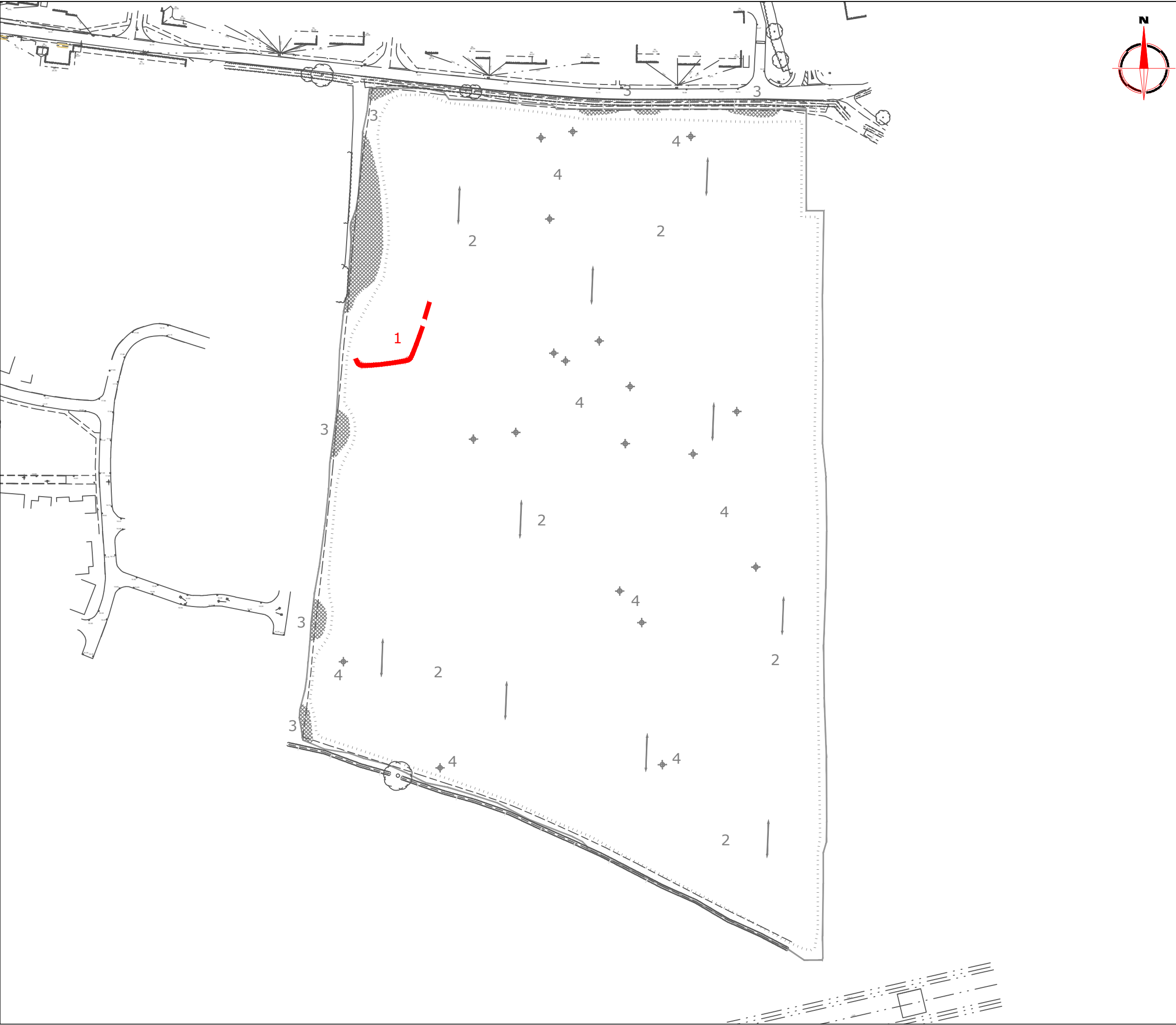
AUG 15





















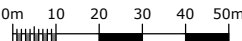
Drawn by

TR

Figure No.

08



Amendments		
Issue No.	Date	Description
-	-	-
-	-	-
© Stratascan Ltd - ----		
PROBABLE ARCHAEOLOGY		
	Positive anomaly / weak positive anomaly - probable cut feature of archaeological origin	
	Negative anomaly / weak negative anomaly - probable bank or earthwork of archaeological origin	
POSSIBLE ARCHAEOLOGY		
	Positive anomaly / weak positive anomaly - possible cut feature of archaeological origin	
	Negative anomaly / weak negative anomaly - possible bank or earthwork of archaeological origin	
MEDIEVAL/POST-MEDIEVAL AGRICULTURE		
	Widely spaced curving parallel linear anomalies - probably related to ridge-and-furrow	
	Closely spaced parallel linear anomalies - probably related to agricultural activity such as ploughing	
	Linear anomaly - probably related to a former field boundary not present on available mapping	
	Linear anomaly - related to a former field boundary present on available mapping	
OTHER ANOMALIES		
	Linear anomaly - probably related to pipe, cable or other modern service	
	Linear anomaly - possibly related to land drain	
	Magnetic disturbance associated with nearby metal object such as service or field boundary	
	Strong magnetic debris - possible disturbed or made ground	
	Scattered magnetic debris	
	Area of amorphous magnetic variation - probable natural (e.g. geological or pedological) origin	
	Magnetic spike - probable ferrous object	
Client		
CgMs CONSULTING LTD		
Project Title		Job No. J8862
LEISTON, SUFFOLK		
Subject		
ABSTRACTION AND INTERPRETATION OF GRADIOMETER ANOMALIES - OVERVIEW		
 GEOPHYSICS FOR ARCHAEOLOGY AND ENGINEERING		
VINEYARD HOUSE UPTON UPON SEVERN WR8 0SA		T: 01684 592266 E: info@stratascan.co.uk www.stratascan.co.uk
  SUMO GROUP MEMBER		
 		
Scale 1:1750		
		
Plot A3	Checked by DGE	Issue No. 01
Survey date AUG 15	Drawn by TR	Figure No. 09





Amendments

Issue No.	Date	Description
-	-	-
-	-	-

© Stratascan Ltd - ----

PROBABLE ARCHAEOLOGY

	Positive anomaly / weak positive anomaly - probable cut feature of archaeological origin
	Negative anomaly / weak negative anomaly - probable bank or earthwork of archaeological origin

POSSIBLE ARCHAEOLOGY

	Positive anomaly / weak positive anomaly - possible cut feature of archaeological origin
	Negative anomaly / weak negative anomaly - possible bank or earthwork of archaeological origin

MEDIEVAL/POST-MEDIEVAL AGRICULTURE

	Widely spaced curving parallel linear anomalies - probably related to ridge-and-furrow
	Closely spaced parallel linear anomalies - probably related to agricultural activity such as ploughing
	Linear anomaly - probably related to a former field boundary not present on available mapping
	Linear anomaly - related to a former field boundary present on available mapping

OTHER ANOMALIES

	Linear anomaly - probably related to pipe, cable or other modern service
	Linear anomaly - possibly related to land drain
	Magnetic disturbance associated with nearby metal object such as service or field boundary
	Strong magnetic debris - possible disturbed or made ground
	Scattered magnetic debris
	Area of amorphous magnetic variation - probable natural (e.g. geological or pedological) origin
	Magnetic spike - probable ferrous object

Client

CgMs CONSULTING LTD

Project Title

Job No.

J8862

LEISTON, SUFFOLK

Subject

ABSTRACTION AND INTERPRETATION OF GRADIOMETER ANOMALIES - NORTH

GEOPHYSICS FOR ARCHAEOLOGY AND ENGINEERING

VINEYARD HOUSE  
UPTON UPON SEVERN  
WR8 0SA

T: 01684 592266  
E: info@stratascan.co.uk  
www.stratascan.co.uk

SUMO GROUP MEMBER

Scale

1:1000

Plot

A3

Checked by

DGE

Issue No.

01

Survey date

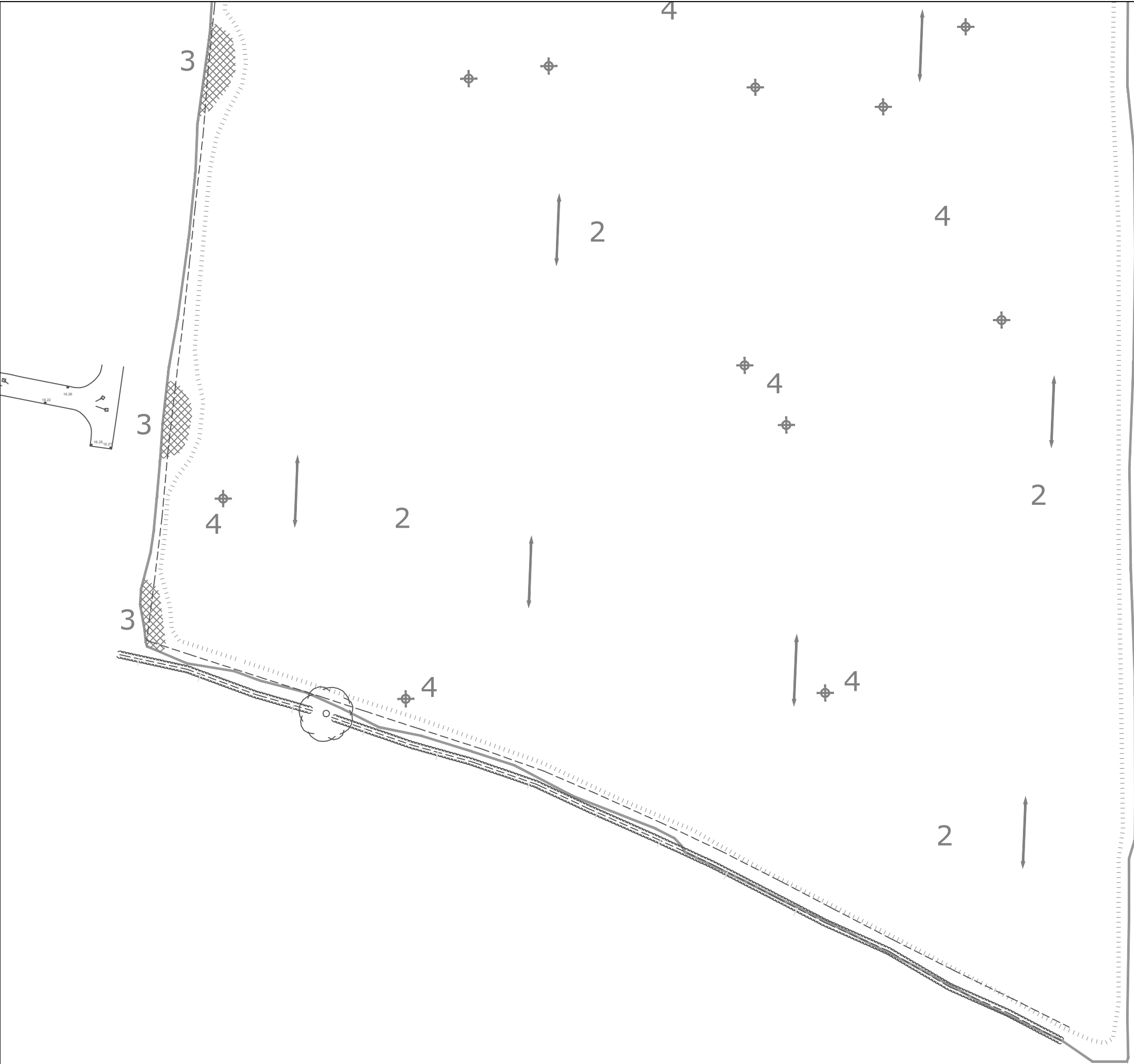
AUG 15

Drawn by

TR

Figure No.

10



Amendments		
Issue No.	Date	Description
-	-	-
-	-	-
© Stratascan Ltd - ----		
PROBABLE ARCHAEOLOGY		
	Positive anomaly / weak positive anomaly - probable cut feature of archaeological origin	
	Negative anomaly / weak negative anomaly - probable bank or earthwork of archaeological origin	
POSSIBLE ARCHAEOLOGY		
	Positive anomaly / weak positive anomaly - possible cut feature of archaeological origin	
	Negative anomaly / weak negative anomaly - possible bank or earthwork of archaeological origin	
MEDIEVAL/POST-MEDIEVAL AGRICULTURE		
	Widely spaced curving parallel linear anomalies - probably related to ridge-and-furrow	
	Closely spaced parallel linear anomalies - probably related to agricultural activity such as ploughing	
	Linear anomaly - probably related to a former field boundary not present on available mapping	
	Linear anomaly - related to a former field boundary present on available mapping	
OTHER ANOMALIES		
	Linear anomaly - probably related to pipe, cable or other modern service	
	Linear anomaly - possibly related to land drain	
	Magnetic disturbance associated with nearby metal object such as service or field boundary	
	Strong magnetic debris - possible disturbed or made ground	
	Scattered magnetic debris	
	Area of amorphous magnetic variation - probable natural (e.g. geological or pedological) origin	
	Magnetic spike - probable ferrous object	
Client		
CgMs CONSULTING LTD		
Project Title		Job No. J8862
LEISTON, SUFFOLK		
Subject		
ABSTRACTION AND INTERPRETATION OF GRADIOMETER ANOMALIES - SOUTH		
<div><div></div><div>GEOPHYSICS FOR ARCHAEOLOGY AND ENGINEERING</div><div>VINEYARD HOUSE UPTON UPON SEVERN WR8 0SA</div><div>T: 01684 592266 E: info@stratascan.co.uk www.stratascan.co.uk</div></div> <div></div>		
Scale		
1:1000		
Plot		Checked by
A3		DGE
Issue No.		01
Survey date		Figure No.
AUG 15		11
Drawn by		
TR		

# Your Survey Partner

For a complete and complementary  
range of survey services

*Survey services  
you can rely on*

Archaeological  
As Built Records  
BIM Ready 3D Models  
Boundary Disputes  
CCTV  
Geophysical  
Laser Scanning  
Measured Building  
Pipeline Routes  
Railway  
Retrofit  
Setting Out  
Statutory Plan Collation  
Topographic  
Utility Mapping  
UXO Detection  
Void Detection

## **STRATASCAN LTD**

Vineyard House Upper Hook Road Upton upon Severn  
Worcestershire WR8 0SA United Kingdom

T: 01684 592266 F: 01684 594142  
[info@stratascan.co.uk](mailto:info@stratascan.co.uk) [www.stratascan.co.uk](http://www.stratascan.co.uk)

# STRATASCAN™



SUMO  
Group  
Member