

GEOPHYSICAL SURVEY REPORT

# STRATASCAN™



Project name:  
**Bower House Land, Riverside Road, Banwell, North Somerset**

Client:  
**RPS Group Plc**

**July 2014**

Job ref:  
**J7062**

Report author:  
**Orlando J. Prestidge BA (Hons) MA Alfa**

# GEOPHYSICAL SURVEY REPORT

Project name:

**Bower House Land, Riverside Road, Banwell, North Somerset**

Client:

**RPS Group Plc**



Job ref:

**J7062**

Techniques:

**Detailed magnetic survey –  
Gradiometry**

Survey date:

**30th June - 3rd July 2014**

Site centred at:

**ST 399 604**

Post code:

**BS29 6EL**

Field team:

**James Slater** BSc (Hons), **Richard Collins, Tom  
Worthington** BSc, **Jack Larnar**

Project manager:

**Simon Haddrell** BEng(Hons) AMBCS PIFA

Report written By:

**Orlando J. Prestidge** BA (Hons) MA AIFA

CAD illustrations by:

**Orlando J. Prestidge** BA (Hons) MA AIFA

Checked by:

**David Elks** MSc AIFA

## TABLE OF CONTENTS

|   |           |
|---|-----------|
| <b>LIST OF FIGURES.....</b>                                     | <b>2</b>  |
| <b>1 SUMMARY OF RESULTS .....</b>                               | <b>3</b>  |
| <b>2 INTRODUCTION .....</b>                                     | <b>3</b>  |
| 2.1 Background synopsis.....                                    | 3         |
| 2.2 Site location .....   | 3         |
| 2.3 Description of site .....                                   | 3         |
| 2.4 Geology and soils .....                                     | 3         |
| 2.5 Site history and archaeological potential .....             | 4         |
| 2.6 Survey objectives .....                                     | 4         |
| 2.7 Survey methods .....  | 4         |
| 2.8 Processing, presentation and interpretation of results..... | 5         |
| 2.8.1 Processing .....  | 5         |
| 2.8.2 Presentation of results and interpretation.....           | 5         |
| <b>3 RESULTS.....</b>   | <b>5</b>  |
| 3.1 Probable Archaeology.....                                   | 6         |
| 3.2 Possible Archaeology .....                                  | 6         |
| 3.3 Other Anomalies .....                                       | 6         |
| <b>4 CONCLUSION .....</b>                                       | <b>6</b>  |
| <b>5 REFERENCES .....</b>                                       | <b>8</b>  |
| <b>APPENDIX A – METHODOLOGY &amp; SURVEY EQUIPMENT .....</b>    | <b>9</b>  |
| <b>APPENDIX B – BASIC PRINCIPLES OF MAGNETIC SURVEY .....</b>   | <b>10</b> |
| <b>APPENDIX C – GLOSSARY OF MAGNETIC ANOMALIES.....</b>         | <b>11</b> |

## LIST OF FIGURES

|           |        |   |
|-----------|--------|---|
| Figure 01 | 1:2500 | Location plan of survey area showing grids and referencing      |
| Figure 02 | 1:1000 | Colour plot of gradiometer data showing extreme values - north  |
| Figure 03 | 1:1000 | Colour plot of gradiometer data showing extreme values - south  |
| Figure 04 | 1:1000 | Plot of minimally processed gradiometer data - north            |
| Figure 05 | 1:1000 | Plot of minimally processed gradiometer data - south            |
| Figure 06 | 1:1000 | Abstraction and interpretation of gradiometer anomalies - north |
| Figure 07 | 1:1000 | Abstraction and interpretation of gradiometer anomalies - south |

## 1 SUMMARY OF RESULTS

A detailed gradiometry survey was conducted over approximately 19 hectares of agricultural land. A number of features of archaeological origin have been identified. These consist of a probable enclosure and a number of infilled surface drainage channels.

Other features identified are likely modern, agricultural or natural in origin. These include a service, magnetic disturbance relating to field boundaries and fences, land drains, scattered magnetic debris and spikes and large areas of natural magnetic variation (including a probable palaeochannel).

## 2 INTRODUCTION

### 2.1 *Background synopsis*

Stratascan were commissioned to undertake a geophysical survey of an area outlined for development. This survey forms part of an archaeological investigation being undertaken by RPS Group Plc.

### 2.2 *Site location*

The site is located near Banwell, North Somerset at OS ref. ST 399 604. The survey area sits to the north west of the village of Banwell itself, directly east of Riverside Road. The Rockers Ryne drainage channel forms the northern border of the site.

### 2.3 *Description of site*

The survey area is approximately 19 hectares of mixed-use agricultural land, currently under arable cultivation and pasture. The topography is flat overall. Some small areas of the site (designated as the solar park cable route, located to the north east of the survey area) were unsurveyable due to their proximity to the large, open Rockers Rhyne drainage channel and position on a track way. Overgrown vegetation was also present on the far northern section of the site.

### 2.4 *Geology and soils*

The underlying geology is Mercia Mudstone Group – mudstone and halite-stone (British Geological Survey website). The drift geology is Tidal Flat Deposits – Clay, Silt and Sand (British Geological Survey website).

The overlying soils are known as Newchurch 2 which are typical pelo-calcareous alluvial gley soils. These consist of deep stoneless mainly calcareous clayey soils (Soil Survey of England and Wales, Sheet 5 South West England).

## 2.5 **Site history and archaeological potential**

The following is taken from the Written Scheme of Investigation (WSI) produced by RPS Group (Kinchin-Smith 2014):

*“There are no designated heritage assets within the proposal site. There is one Scheduled Monument (the Deserted Medieval Farmstead 420m south of Gout House Farm) located in a field immediately west of the proposals site. There is another SM (Moated Site at Nye Farm, Nye) c.750m from the eastern boundary of the proposals site. The Monument to the west of the site is defined by a ditch which encloses a raised island c.48m from east to west and c.30m from north to south. The surrounding ditch has been incorporated into a modern rhyne on its west side but survives as a waterfilled channel c.5m wide elsewhere. The ditch is breached by a causeway in the south-west which would have provided access to the farmstead. Early historical references to the site record it as ‘Bower’ in 1379 and ‘Bower’ in 1437. The ditched enclosure is termed the ‘Bower House’ on a tithe map of 1845 and recorded as such in a deed dated to the same year. Medieval pottery dating to between the 11th and 14th centuries AD was recovered from the site during rhyne clearance in 1976. Roman pottery has also been recovered from the site, demonstrating an earlier phase of occupation. Remains of a building within the enclosure were revealed as parch marks visible from the air during the drought of 1976. There are no Listed buildings or conservation areas nearby, the closest being at Banwell, some 1.75km to the south.*

*LIDAR data indicates the existence of multiple infilled palaeochannels, the largest of which, at the eastern edge of the site is probably the proto-Towerhead Brook, which is itself cut by the Liddy Yeo River. The nature of the site indicates a high potential for the preservation of waterlogged remains, including paleoenvironmental remains.*

*The proposal site is shown on the North Somerset Historic Landscape Characterisation as ‘Post Medieval (15<sup>th</sup> – 17<sup>th</sup>-century) organised enclosures of anciently reclaimed inland moors’. To the north and east are areas of ‘Post Medieval (15<sup>th</sup> – 17<sup>th</sup>-century) irregular enclosures of anciently reclaimed inland moors’.*

## 2.6 **Survey objectives**

The objective of the survey was to locate any features of possible archaeological origin in order that they may be assessed prior to a solar park development.

## 2.7 **Survey methods**

This report and all fieldwork have been conducted in accordance with both the English Heritage guidelines outlined in the document: *Geophysical Survey in Archaeological Field Evaluation, 2008* and with the Institute for Archaeologists document *Standard and Guidance for Archaeological Geophysical Survey*.

Detailed magnetic survey (gradiometry) was used as an efficient and effective method of locating archaeological anomalies. Mudstone is listed as offering a “variable” to “poor”

response (English Heritage 2008) but can also offer good responses for cut features (such as those visible as crop marks on the aerial photos and the LIDAR survey) so magnetometer survey was recommended. More information regarding this technique is included in Appendix A.

## 2.8 *Processing, presentation and interpretation of results*

### 2.8.1 *Processing*

Processing is performed using specialist software. This can emphasise various aspects contained within the data but which are often not easily seen in the raw data. Basic processing of the magnetic data involves 'flattening' the background levels with respect to adjacent traverses and adjacent grids. Once the basic processing has flattened the background it is then possible to carry out further processing which may include low pass filtering to reduce 'noise' in the data and hence emphasise the archaeological or man-made anomalies.

The following schedule shows the basic processing carried out on all minimally processed gradiometer data used in this report:

1. *Destripe* (Removes striping effects caused by zero-point discrepancies between different sensors and walking directions)
2. *Destagger* (Removes zigzag effects caused by inconsistent walking speeds on sloping, uneven or overgrown terrain)

### 2.8.2 *Presentation of results and interpretation*

The presentation of the data for each site involves a print-out of the minimally processed data both as a greyscale plot and a colour plot showing extreme magnetic values, together with a greyscale plot of the processed data. Magnetic anomalies have been identified and plotted onto the 'Abstraction and Interpretation of Anomalies' drawing for the site.

## 3 **RESULTS**

The detailed magnetic gradiometer survey conducted at Bower House Land, Banwell has identified a number of anomalies that have been characterised as being of a *probable* archaeological origin.

The difference between *probable* and *possible* archaeological origin is a confidence rating. Features identified within the dataset that form recognisable archaeological patterns or seem to be related to a deliberate historical act have been interpreted as being of a probable archaeological origin.

Features of possible archaeological origin tend to be more amorphous anomalies which may have similar magnetic attributes in terms of strength or polarity but are difficult to classify as being archaeological or natural.

The following list of numbered anomalies refers to numerical labels on the interpretation plots.

### 3.1 **Probable Archaeology**

- 1 A sub-rectangular positive anomaly indicative of a cut feature of archaeological origin. Likely an enclosure.
- 2 Linear anomalies related to infilled surface drainage, visible on LIDAR data and aerial photographs.

### 3.2 **Possible Archaeology**

No possible archaeology has been identified within the survey area.

### 3.3 **Other Anomalies**

- 3 A linear anomaly probably related to a pipe, cable or other modern service
- 4 Linear anomalies possibly related to land drains
- 5 Areas of magnetic disturbance are the result of substantial nearby ferrous metal objects such as fences and underground services. These effects can mask weaker archaeological anomalies, but on this site have not affected a significant proportion of the area.
- 6 Scattered magnetic debris
- 7 Areas of amorphous magnetic variation, probably of a natural (e.g geological or pedological) origin. These are likely infilled palaeochannels (as documented within the WSI) and/or related to the Tidal Flat Deposits drift geology.
- 8 A number of magnetic 'spikes' (strong focussed values with associated antipolar response) indicate ferrous metal objects. These are likely to be modern rubbish.
- 9 Probable infilled palaeochannel.

## 4 **CONCLUSION**

The survey at Bower House Land, Banwell has identified a number of features of archaeological interest. A sub-rectangular feature, likely an enclosure, is visible in the south of the site. The



feature is visible on aerial photography as a crop mark, but is not visible on any available historic mapping. This likely dates the feature to an origin earlier than the 1826 Congresby Drainage Map. A number of infilled surface drainage channels are also present, mostly located within the southernmost field of the survey area. These are visible as linear features on LIDAR data supplied by RPS Group, and again, originate from a date earlier than 1826 drainage map.

Other features identified are likely modern, agricultural or natural in origin. These include a service, magnetic disturbance relating to field boundaries and fences, scattered magnetic debris and spikes and large areas of natural magnetic variation. These areas of variation are likely of a geological or pedological origin and are probably related to the Tidal Flat Deposits drift geology, common across the Severn Estuary Levels. A probable infilled palaeochannel (as documented within the WSI) is also visible in the north east of the survey area. Although being of a natural origin, these features can hold a “...*high potential for the preservation of waterlogged remains, including paleoenvironmental remains*” (Kinchin-Smith 2014).

A number of land drains are also present within the survey data, including one possible ‘French Drain’ visible in the centre of the southernmost field. This feature, visible as a strong linear, may be comprised of a trench with a porous pipe at the bottom, covered in magnetic rubble or gravel (Institute of Historic Building Conservation 2014). The presence of this backfill has given the strong response visible in the colour plot (as well as a crop mark on aerial photos).

## 5 REFERENCES

British Geological Survey South Sheet, 1977. *Geological Survey Ten Mile Map, South Sheet First Edition (Quaternary)*. Institute of Geological Sciences.

British Geological Survey, 2001. *Geological Survey Ten Mile Map, South Sheet, Fourth Edition (Solid)*. British Geological Society.

British Geological Survey, n.d., *website*:  
(<http://www.bgs.ac.uk/opengeoscience/home.html?Accordion1=1#maps>) Geology of Britain viewer.

Soil Survey of England and Wales, 1983. *Soils of England and Wales, Sheet 5 South West England*.

English Heritage, 2008. *Geophysical Survey in Archaeological Field Evaluation*.

Kinchin-Smith, R, 2014, *Bower House Solar Park, Riverside Road, Banwell, North Somerset; Written Scheme of Investigation (WSI) for a Programme of Geophysical Survey*, RPS Planning & Development

Institute for Historic Building Conservation, *IHBS Technical Sub-Committee Paper; French Drains*, accessed 10/07/2014:

[http://www.ihbc.org.uk/guidance\\_notes/docs/tech\\_papers/French%20Drains.pdf](http://www.ihbc.org.uk/guidance_notes/docs/tech_papers/French%20Drains.pdf)

Institute For Archaeologists. *Standard and Guidance for Archaeological Geophysical Survey*.

<http://www.archaeologists.net/sites/default/files/nodefiles/Geophysics2010.pdf>

## APPENDIX A – METHODOLOGY & SURVEY EQUIPMENT

### ***Grid locations***

The location of the survey grids has been plotted together with the referencing information. Grids were set out using a Leica 705auto Total Station and referenced to suitable topographic features around the perimeter of the site or a Leica Smart Rover RTK GPS.

An RTK GPS (Real-time Kinematic Global Positioning System) can locate a point on the ground to a far greater accuracy than a standard GPS unit. A standard GPS suffers from errors created by satellite orbit errors, clock errors and atmospheric interference, resulting in an accuracy of 5m-10m. An RTK system uses a single base station receiver and a number of mobile units. The base station re-broadcasts the phase of the carrier it measured, and the mobile units compare their own phase measurements with those they received from the base station. A SmartNet RTK GPS uses Ordnance Survey's network of over 100 fixed base stations to give an accuracy of around 0.01m.

### ***Survey equipment and gradiometer configuration***

Although the changes in the magnetic field resulting from differing features in the soil are usually weak, changes as small as 0.2 nanoTeslas (nT) in an overall field strength of 48,000nT, can be accurately detected using an appropriate instrument.

The mapping of the anomaly in a systematic manner will allow an estimate of the type of material present beneath the surface. Strong magnetic anomalies will be generated by buried iron-based objects or by kilns or hearths. More subtle anomalies such as pits and ditches can be seen if they contain more humic material which is normally rich in magnetic iron oxides when compared with the subsoil.

To illustrate this point, the cutting and subsequent silting or backfilling of a ditch may result in a larger volume of weakly magnetic material being accumulated in the trench compared to the undisturbed subsoil. A weak magnetic anomaly should therefore appear in plan along the line of the ditch.

The magnetic survey was carried out using a dual sensor Grad601-2 Magnetic Gradiometer manufactured by Bartington Instruments Ltd. The instrument consists of two fluxgates very accurately aligned to nullify the effects of the Earth's magnetic field. Readings relate to the difference in localised magnetic anomalies compared with the general magnetic background. The Grad601-2 consists of two high stability fluxgate gradiometers suspended on a single frame. Each gradiometer has a 1m separation between the sensing elements so enhancing the response to weak anomalies.

### ***Sampling interval***

Readings were taken at 0.25m centres along traverses 1m apart. This equates to 3600 sampling points in a full 30m x 30m grid.

### ***Depth of scan and resolution***

The Grad 601-2 has a typical depth of penetration of 0.5m to 1.0m, though strongly magnetic objects may be visible at greater depths. The collection of data at 0.25m centres provides an optimum methodology for the task balancing cost and time with resolution.

### ***Data capture***

The readings are logged consecutively into the data logger which in turn is daily down-loaded into a portable computer whilst on site. At the end of each site survey, data is transferred to the office for processing and presentation.

## APPENDIX B – BASIC PRINCIPLES OF MAGNETIC SURVEY

Detailed magnetic survey can be used to effectively define areas of past human activity by mapping spatial variation and contrast in the magnetic properties of soil, subsoil and bedrock.

Weakly magnetic iron minerals are always present within the soil and areas of enhancement relate to increases in *magnetic susceptibility* and permanently magnetised *thermoremanent* material.

Magnetic susceptibility relates to the induced magnetism of a material when in the presence of a magnetic field. This magnetism can be considered as effectively permanent as it exists within the Earth's magnetic field. Magnetic susceptibility can become enhanced due to burning and complex biological or fermentation processes.

Thermoremanence is a permanent magnetism acquired by iron minerals that, after heating to a specific temperature known as the Curie Point, are effectively demagnetised followed by re-magnetisation by the Earth's magnetic field on cooling. Thermoremanent archaeological features can include hearths and kilns and material such as brick and tile may be magnetised through the same process.

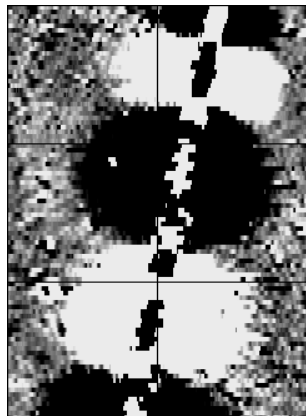
Silting and deliberate infilling of ditches and pits with magnetically enhanced soil creates a relative contrast against the much lower levels of magnetism within the subsoil into which the feature is cut. Systematic mapping of magnetic anomalies will produce linear and discrete areas of enhancement allowing assessment and characterisation of subsurface features. Material such as subsoil and non-magnetic bedrock used to create former earthworks and walls may be mapped as areas of lower enhancement compared to surrounding soils.

Magnetic survey is carried out using a fluxgate gradiometer which is a passive instrument consisting of two sensors mounted vertically 1m apart. The instrument is carried about 30cm above the ground surface and the top sensor measures the Earth's magnetic field whilst the lower sensor measures the same field but is also more affected by any localised buried field. The difference between the two sensors will relate to the strength of a magnetic field created by a buried feature, if no field is present the difference will be close to zero as the magnetic field measured by both sensors will be the same.

Factors affecting the magnetic survey may include soil type, local geology, previous human activity, disturbance from modern services etc.

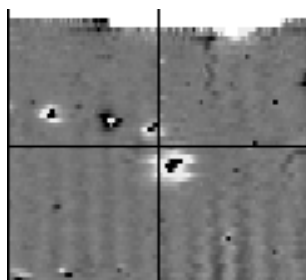
## APPENDIX C – GLOSSARY OF MAGNETIC ANOMALIES

### Bipolar



A bipolar anomaly is one that is composed of both a positive response and a negative response. It can be made up of any number of positive responses and negative responses. For example a pipeline consisting of alternating positive and negative anomalies is said to be bipolar. See also dipolar which has only one area of each polarity. The interpretation of the anomaly will depend on the magnitude of the magnetic field strength. A weak response may be caused by a clay field drain while a strong response will probably be caused by a metallic service.

### Dipolar

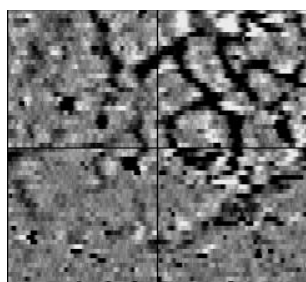


This consists of a single positive anomaly with an associated negative response. There should be no separation between the two polarities of response. These responses will be created by a single feature. The interpretation of the anomaly will depend on the magnitude of the magnetic measurements. A very strong anomaly is likely to be caused by a ferrous object.

### Positive anomaly with associated negative response

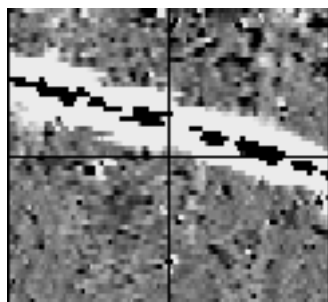
See bipolar and dipolar.

### Positive linear



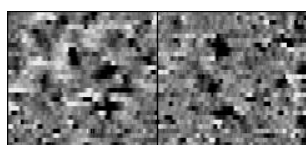
A linear response which is entirely positive in polarity. These are usually related to in-filled cut features where the fill material is magnetically enhanced compared to the surrounding matrix. They can be caused by ditches of an archaeological origin, but also former field boundaries, ploughing activity and some may even have a natural origin.

### Positive linear anomaly with associated negative response



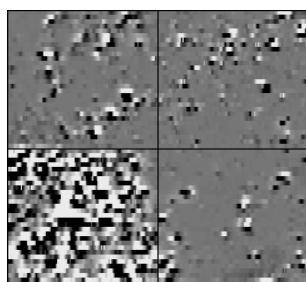
A positive linear anomaly which has a negative anomaly located adjacently. This will be caused by a single feature. In the example shown this is likely to be a single length of wire/cable probably relating to a modern service. Magnetically weaker responses may relate to earthwork style features and field boundaries.

### Positive point/area



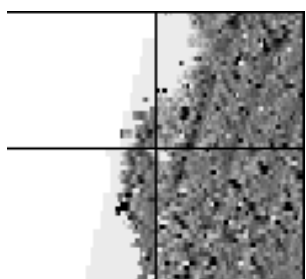
These are generally spatially small responses, perhaps covering just 3 or 4 reading nodes. They are entirely positive in polarity. Similar to positive linear anomalies they are generally caused by in-filled cut features. These include pits of an archaeological origin, possible tree bowls or other naturally occurring depressions in the ground.

### Magnetic debris



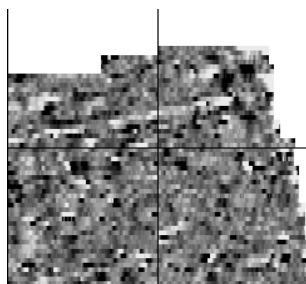
Magnetic debris consists of numerous dipolar responses spread over an area. If the amplitude of response is low ( $\pm 3nT$ ) then the origin is likely to represent general ground disturbance with no clear cause, it may be related to something as simple as an area of dug or mixed earth. A stronger anomaly ( $\pm 250nT$ ) is more indicative of a spread of ferrous debris. Moderately strong anomalies may be the result of a spread of thermoremanent material such as bricks or ash.

### Magnetic disturbance



Magnetic disturbance is high amplitude and can be composed of either a bipolar anomaly, or a single polarity response. It is essentially associated with magnetic interference from modern ferrous structures such as fencing, vehicles or buildings, and as a result is commonly found around the perimeter of a site near to boundary fences.

### Negative linear

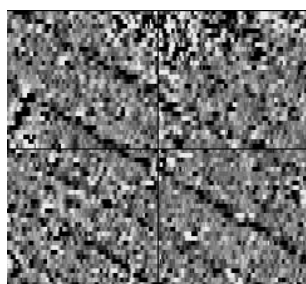


A linear response which is entirely negative in polarity. These are generally caused by earthen banks where material with a lower magnetic magnitude relative to the background top soil is built up. See also ploughing activity.

### Negative point/area

Opposite to positive point anomalies these responses may be caused by raised areas or earthen banks. These could be of an archaeological origin or may have a natural origin.

### Ploughing activity



Ploughing activity can often be visualised by a series of parallel linear anomalies. These can be of either positive polarity or negative polarity depending on site specifics. It can be difficult to distinguish between ancient ploughing and more modern ploughing. Clues such as the separation of each linear, straightness, strength of response and cross cutting relationships can be used to aid this, although none of these can be guaranteed to differentiate between different phases of activity.

### Polarity

Term used to describe the measurement of the magnetic response. An anomaly can have a positive polarity (values above 0nT) and/or a negative polarity (values below 0nT).

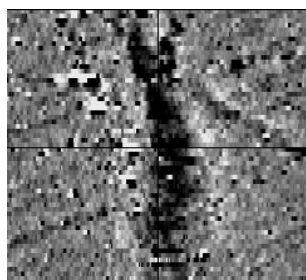
### Strength of response

The amplitude of a magnetic response is an important factor in assigning an interpretation to a particular anomaly. For example a positive anomaly covering a 10m<sup>2</sup> area may have values up to around 3000nT, in which case it is likely to be caused by modern magnetic interference. However, the same size and shaped anomaly but with values up to only 4nT may have a natural origin. Colour plots are used to show the amplitude of response.

### Thermoremanent response

A feature which has been subject to heat may result in it acquiring a magnetic field. This can be anything up to approximately +/-100 nT in value. These features include clay fired drains, brick, bonfires, kilns, hearths and even pottery. If the heat application has occurred in situ (e.g. a kiln) then the response is likely to be bipolar compared to if the heated objects have been disturbed and moved relative to each other, in which case they are more likely to take an irregular form and may display a debris style response (e.g. ash).

### Weak background variations



Weakly magnetic wide scale variations within the data can sometimes be seen within sites. These usually have no specific structure but can often appear curvy and sinuous in form. They are likely to be the result of natural features, such as soil creep, dried up (or seasonal) streams. They can also be caused by changes in the underlying geology or soil type which may contain unpredictable distributions of magnetic minerals, and are usually apparent in several locations across a site.



# STRATASCAN™



SUMO  
Group  
Member

## STRATASCAN LTD

Vineyard House Upper Hook Road Upton upon Severn  
Worcestershire WR8 0SA United Kingdom

T: 01684 592266 F: 01684 594142  
info@stratascan.co.uk www.stratascan.co.uk