

GEOPHYSICAL SURVEY REPORT

STRATASCAN™



Project name:
University of Gloucester, Oxstalls Campus

Client:
Oxford Archaeology

August 2015

Job ref:
8770

Report author:
James Slater BSc (Hons)

GEOPHYSICAL SURVEY REPORT

Project name:

University of Gloucester, Oxstalls Campus

Client:

Oxford Archaeology



Job ref:

8770

Field team:

Robert Knight BA (Hons),

Stephen Weston BA (Hons), **Steven Chetwynd** BA (Hons)

Techniques:

**Detailed magnetic survey –
Gradiometry**

Project manager:

Simon Haddrell BEng(Hons) AMBCS PCIfA

Survey date:

6-7th August 2015

Report written By:

James Slater BSc (Hons)

Site centred at:

SO 845 195

CAD illustrations by:

James Slater BSc (Hons)

Rebecca Davies BSc (Hons)

Post code:

GL1 3LW

Checked by:

David Elks MSc ACIfA

TABLE OF CONTENTS

LIST OF FIGURES.....	2
1 SUMMARY OF RESULTS	3
2 INTRODUCTION	3
2.1 Background synopsis.....	3
2.2 Site location	3
2.3 Description of site	3
2.4 Geology and soils	3
2.5 Site history and archaeological potential	4
2.6 Survey objectives	4
2.7 Survey methods	4
2.8 Processing, presentation and interpretation of results.....	4
2.8.1 Processing	4
2.8.2 Presentation of results and interpretation.....	4
3 RESULTS.....	5
3.1 Probable Archaeology.....	5
3.2 Possible Archaeology	5
3.3 Medieval/Post-Medieval Agriculture.....	5
3.4 Other Anomalies	6
4 DATA APPRAISAL & CONFIDENCE ASSESSMENT	6
5 CONCLUSION	7
6 REFERENCES	8
APPENDIX A – METHODOLOGY & SURVEY EQUIPMENT	9
APPENDIX B – BASIC PRINCIPLES OF MAGNETIC SURVEY	10
APPENDIX C – GLOSSARY OF MAGNETIC ANOMALIES.....	11

LIST OF FIGURES

Figure 01	1:25 000	Location plan of survey area
Figure 02	1:1250	Location of survey grids and referencing – Area A
Figure 03	1:1250	Location of survey grids and referencing – Area B&C
Figure 04	1:1250	Colour plot of gradiometer data showing extreme values – Area A
Figure 05	1:1250	Colour plot of gradiometer data showing extreme values – Area B&C
Figure 06	1:1250	Plot of minimally processed gradiometer data – Area A
Figure 07	1:1250	Plot of minimally processed gradiometer data – Area B&C
Figure 08	1:1250	Abstraction and interpretation of gradiometer anomalies – Area A
Figure 09	1:1250	Abstraction and interpretation of gradiometer anomalies – Area B&C

1 SUMMARY OF RESULTS

A detailed gradiometry survey was conducted over 10.5 hectares split over three areas at Oxstalls Campus, University of Gloucester. None of the areas contain any probable or possible archaeological features. Areas A and B contain ridge and furrow indicating the site has an agricultural past. The remaining features in Area A are all modern in origin and include a footpath, magnetic disturbance related to playing field features, as well as modern agricultural practises and scattered ferrous objects. Area B contains further disturbance caused by goalposts and other playing field features, a possible footpath and scattered magnetic debris. Area C contains many modern features including land drains, disturbed ground, and magnetic disturbance associated with the field boundaries.

2 INTRODUCTION

2.1 *Background synopsis*

Stratascan were commissioned to undertake a geophysical survey of an area outlined for further development of the University Campus. This survey forms part of an archaeological investigation being undertaken by Oxford Archaeology.

2.2 *Site location*

The site is split in to three areas located north of the Estcourt Road, at the Oxstalls Campus of the University of Gloucester at OS ref. SO 845 195. Areas B and C are separated by allotment gardens, and Wotton Brook, and Area A is located north west of these, adjacent to Oxstalls Sports Park.

2.3 *Description of site*

The survey area is 10.5 hectares of flat land, consisting of various sports fields. Area A was unobstructed but Areas B and C contained approximately 2 hectares of unsurveyable ground due to allotment gardens and overgrown vegetation.

2.4 *Geology and soils*

The underlying geology is Lias Formation and Charmouth Mudstone Formation (British Geological Survey website). The drift geology is Cheltenham sand and gravel, and a narrow band of Alluvium-clay silt sand and gravel affects the eastern side of Area B, along the Wooton Brook (British Geological Survey website).

The overlying soils are known as Badsey 1 which are typical brown calcareous earths. These consist of calcareous and non-calcareous fine loamy soils over limestone gravel and some fine loamy soils over gravel (Soil Survey of England and Wales, Sheet 5, South West England).

2.5 **Site history and archaeological potential**

A brief search of the Gloucestershire Historic Environment Record reveals that within 500m of the survey area, a Roman Cemetery with a number of Roman burials and inhumations have been discovered, along with a 1st Century well. Medieval buildings have also been discovered. The presence of these features indicate that the site has moderate potential to hold undiscovered Roman and medieval remains and a low potential for all other periods.

2.6 **Survey objectives**

The objective of the survey was to locate any features of possible archaeological origin in order that they may be assessed prior to development.

2.7 **Survey methods**

This report and all fieldwork have been conducted in accordance with both the English Heritage guidelines outlined in the document: *Geophysical Survey in Archaeological Field Evaluation, 2008* and with the Chartered Institute for Archaeologists document *Standard and Guidance for Archaeological Geophysical Survey*.

Detailed magnetic survey (gradiometry) was used as an efficient and effective method of locating archaeological anomalies. More information regarding this technique is included in Appendix A.

2.8 **Processing, presentation and interpretation of results**

2.8.1 **Processing**

Processing is performed using specialist software. This can emphasise various aspects contained within the data but which are often not easily seen in the raw data. Basic processing of the magnetic data involves 'flattening' the background levels with respect to adjacent traverses and adjacent grids. Once the basic processing has flattened the background it is then possible to carry out further processing which may include low pass filtering to reduce 'noise' in the data and hence emphasise the archaeological or man-made anomalies.

The following schedule shows the basic processing carried out on all minimally processed gradiometer data used in this report:

1. *Destripe* (Removes striping effects caused by zero-point discrepancies between different sensors and walking directions)
2. *Destagger* (Removes zigzag effects caused by inconsistent walking speeds on sloping, uneven or overgrown terrain)

2.8.2 **Presentation of results and interpretation**

The presentation of the data for each site involves a print-out of the minimally processed data both as a greyscale plot and a colour plot showing extreme magnetic values. Magnetic anomalies have been identified and plotted onto the 'Abstraction and Interpretation of

Anomalies' drawing for the site.

3 RESULTS

The detailed magnetic gradiometer survey conducted at Oxstalls Campus has not identified any anomalies that have been characterised as being either of a *probable* or *possible* archaeological origin.

The difference between *probable* and *possible* archaeological origin is a confidence rating. Features identified within the dataset that form recognisable archaeological patterns or seem to be related to a deliberate historical act have been interpreted as being of a probable archaeological origin.

Features of possible archaeological origin tend to be more amorphous anomalies which may have similar magnetic attributes in terms of strength or polarity but are difficult to classify as being archaeological or natural.

The following list of numbered anomalies refers to numerical labels on the interpretation plots.

3.1 *Probable Archaeology*

No probable archaeology has been identified within the survey area.

3.2 *Possible Archaeology*

No possible archaeology has been identified within the survey area.

3.3 *Medieval/Post-Medieval Agriculture*

- 1 Widely spaced parallel anomalies representing ridge and furrow. These appear across Areas A and B.
- 2 Linear anomalies associated with modern agricultural activity appear in Area A.

3.4 *Other Anomalies*

- 3 Linear anomalies of unknown origin in Areas B and C, likely to be modern.
- 4 A large number of linear anomalies representing land drains. These only appear in Area C.
- 5 A footpath which is visible on aerial photography in Area A.
- 6 Two parallel linear anomalies in Area B, possibly indicative of a former track or footpath.
- 7 Magnetic disturbance in Areas A and B associated with goalposts.
- 8 Magnetic disturbance in Area A associated with floodlights.
- 9 Magnetic disturbance in Areas A and B, of unknown origin but likely related to modern features of the playing field.
- 10 Areas of magnetic disturbance are the result of substantial nearby ferrous metal objects such as fences and underground services. These effects can mask weaker archaeological anomalies, but on this site have not affected a significant proportion of the area.
- 11 An area of modern made or disturbed ground in Area C.
- 12 A small area of scattered magnetic debris in Area B.
- 13 Several small amorphous areas of natural magnetic variation related to underlying geology or pedology.
- 14 A number of magnetic 'spikes' (strong focussed values with associated antipolar response) indicate ferrous metal objects. These are likely to be modern rubbish.

4 **DATA APPRAISAL & CONFIDENCE ASSESSMENT**

Charmouth Mudstone typically gives a good response to magnetometer survey and the sand and gravel drift geology also gives a moderate to good response in the Midlands. The geological environment is therefore considered conducive to give good quality data. However this survey area contains much magnetic disturbance and other modern anomalies associated with the landscaping of the sports fields and in places is very noisy. Despite this, some weak anomalies have been identified and it is likely that any archaeology would be discovered if present.

5 CONCLUSION

The survey at Oxstalls Campus, University of Gloucester has identified no probable or possible archaeology although ridge and furrow is highly evident in Areas A and B. This suggests the immediate area has an agricultural history and the Roman remains found near to the site do not appear to extend into the survey area. Some modern agricultural activity and areas of natural variation appear in Area A and B respectively. The remaining anomalies are all of modern origin and most of them are related to playing field features and landscaping. These include land drains, a footpath and possible former track or footpath, goal posts, floodlights, disturbed ground, and scattered metallic debris. Several features of unknown origin are likely to be modern and associated with the playing fields.

6 REFERENCES

British Geological Survey South Sheet, 1977. *Geological Survey Ten Mile Map, South Sheet First Edition (Quaternary)*. Institute of Geological Sciences.

British Geological Survey, 2001. *Geological Survey Ten Mile Map, South Sheet, Fourth Edition (Solid)*. British Geological Society.

British Geological Survey, n.d., *website*:
(<http://www.bgs.ac.uk/opengeoscience/home.html?Accordion1=1#maps>) Geology of Britain viewer.

Chartered Institute For Archaeologists. *Standard and Guidance for Archaeological Geophysical Survey*.
<http://www.archaeologists.net/sites/default/files/nodefiles/Geophysics2010.pdf>

English Heritage, 2008. *Geophysical Survey in Archaeological Field Evaluation*.

Soil Survey of England and Wales, 1983. *Soils of England and Wales, Sheet 5, South West England*.

APPENDIX A – METHODOLOGY & SURVEY EQUIPMENT

Grid locations

The location of the survey grids has been plotted together with the referencing information. Grids were set out using a Leica 705auto Total Station and referenced to suitable topographic features around the perimeter of the site or a Leica Smart Rover RTK GPS.

An RTK GPS (Real-time Kinematic Global Positioning System) can locate a point on the ground to a far greater accuracy than a standard GPS unit. A standard GPS suffers from errors created by satellite orbit errors, clock errors and atmospheric interference, resulting in an accuracy of 5m-10m. An RTK system uses a single base station receiver and a number of mobile units. The base station re-broadcasts the phase of the carrier it measured, and the mobile units compare their own phase measurements with those they received from the base station. A SmartNet RTK GPS uses Ordnance Survey's network of over 100 fixed base stations to give an accuracy of around 0.01m.

Survey equipment and gradiometer configuration

Although the changes in the magnetic field resulting from differing features in the soil are usually weak, changes as small as 0.2 nanoTeslas (nT) in an overall field strength of 48,000nT, can be accurately detected using an appropriate instrument.

The mapping of the anomaly in a systematic manner will allow an estimate of the type of material present beneath the surface. Strong magnetic anomalies will be generated by buried iron-based objects or by kilns or hearths. More subtle anomalies such as pits and ditches can be seen if they contain more humic material which is normally rich in magnetic iron oxides when compared with the subsoil.

To illustrate this point, the cutting and subsequent silting or backfilling of a ditch may result in a larger volume of weakly magnetic material being accumulated in the trench compared to the undisturbed subsoil. A weak magnetic anomaly should therefore appear in plan along the line of the ditch.

The magnetic survey was carried out using a dual sensor Grad601-2 Magnetic Gradiometer manufactured by Bartington Instruments Ltd. The instrument consists of two fluxgates very accurately aligned to nullify the effects of the Earth's magnetic field. Readings relate to the difference in localised magnetic anomalies compared with the general magnetic background. The Grad601-2 consists of two high stability fluxgate gradiometers suspended on a single frame. Each gradiometer has a 1m separation between the sensing elements so enhancing the response to weak anomalies.

Sampling interval

Readings were taken at 0.25m centres along traverses 1m apart. This equates to 3600 sampling points in a full 30m x 30m grid.

Depth of scan and resolution

The Grad 601-2 has a typical depth of penetration of 0.5m to 1.0m, though strongly magnetic objects may be visible at greater depths. The collection of data at 0.25m centres provides an optimum methodology for the task balancing cost and time with resolution.

Data capture

The readings are logged consecutively into the data logger which in turn is daily down-loaded into a portable computer whilst on site. At the end of each site survey, data is transferred to the office for processing and presentation.

APPENDIX B – BASIC PRINCIPLES OF MAGNETIC SURVEY

Detailed magnetic survey can be used to effectively define areas of past human activity by mapping spatial variation and contrast in the magnetic properties of soil, subsoil and bedrock.

Weakly magnetic iron minerals are always present within the soil and areas of enhancement relate to increases in *magnetic susceptibility* and permanently magnetised *thermoremanent* material.

Magnetic susceptibility relates to the induced magnetism of a material when in the presence of a magnetic field. This magnetism can be considered as effectively permanent as it exists within the Earth's magnetic field. Magnetic susceptibility can become enhanced due to burning and complex biological or fermentation processes.

Thermoremanence is a permanent magnetism acquired by iron minerals that, after heating to a specific temperature known as the Curie Point, are effectively demagnetised followed by re-magnetisation by the Earth's magnetic field on cooling. Thermoremanent archaeological features can include hearths and kilns and material such as brick and tile may be magnetised through the same process.

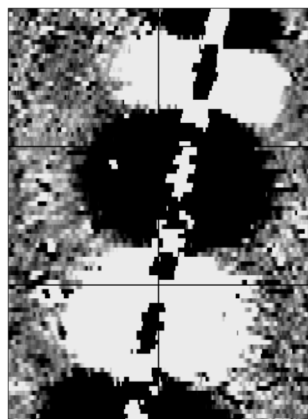
Silting and deliberate infilling of ditches and pits with magnetically enhanced soil creates a relative contrast against the much lower levels of magnetism within the subsoil into which the feature is cut. Systematic mapping of magnetic anomalies will produce linear and discrete areas of enhancement allowing assessment and characterisation of subsurface features. Material such as subsoil and non-magnetic bedrock used to create former earthworks and walls may be mapped as areas of lower enhancement compared to surrounding soils.

Magnetic survey is carried out using a fluxgate gradiometer which is a passive instrument consisting of two sensors mounted vertically 1m apart. The instrument is carried about 30cm above the ground surface and the top sensor measures the Earth's magnetic field whilst the lower sensor measures the same field but is also more affected by any localised buried field. The difference between the two sensors will relate to the strength of a magnetic field created by a buried feature, if no field is present the difference will be close to zero as the magnetic field measured by both sensors will be the same.

Factors affecting the magnetic survey may include soil type, local geology, previous human activity, disturbance from modern services etc.

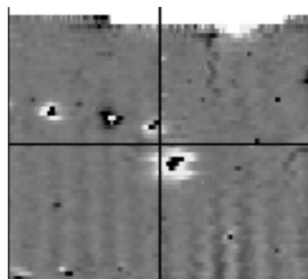
APPENDIX C – GLOSSARY OF MAGNETIC ANOMALIES

Bipolar



A bipolar anomaly is one that is composed of both a positive response and a negative response. It can be made up of any number of positive responses and negative responses. For example a pipeline consisting of alternating positive and negative anomalies is said to be bipolar. See also dipolar which has only one area of each polarity. The interpretation of the anomaly will depend on the magnitude of the magnetic field strength. A weak response may be caused by a clay field drain while a strong response will probably be caused by a metallic service.

Dipolar

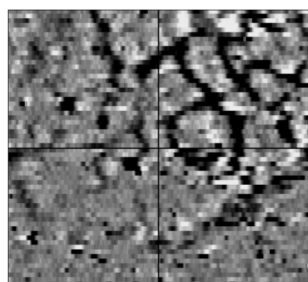


This consists of a single positive anomaly with an associated negative response. There should be no separation between the two polarities of response. These responses will be created by a single feature. The interpretation of the anomaly will depend on the magnitude of the magnetic measurements. A very strong anomaly is likely to be caused by a ferrous object.

Positive anomaly with associated negative response

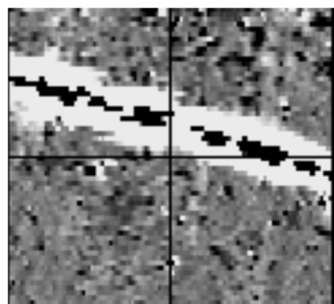
See bipolar and dipolar.

Positive linear



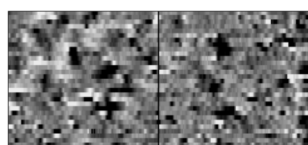
A linear response which is entirely positive in polarity. These are usually related to in-filled cut features where the fill material is magnetically enhanced compared to the surrounding matrix. They can be caused by ditches of an archaeological origin, but also former field boundaries, ploughing activity and some may even have a natural origin.

Positive linear anomaly with associated negative response



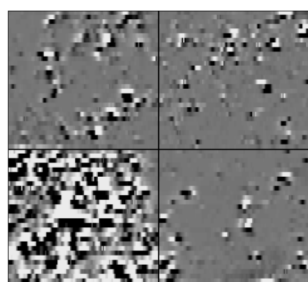
A positive linear anomaly which has a negative anomaly located adjacently. This will be caused by a single feature. In the example shown this is likely to be a single length of wire/cable probably relating to a modern service. Magnetically weaker responses may relate to earthwork style features and field boundaries.

Positive point/area



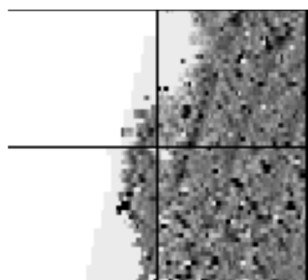
These are generally spatially small responses, perhaps covering just 3 or 4 reading nodes. They are entirely positive in polarity. Similar to positive linear anomalies they are generally caused by in-filled cut features. These include pits of an archaeological origin, possible tree bowls or other naturally occurring depressions in the ground.

Magnetic debris



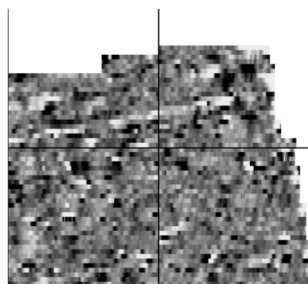
Magnetic debris consists of numerous dipolar responses spread over an area. If the amplitude of response is low ($\pm 3\text{nT}$) then the origin is likely to represent general ground disturbance with no clear cause, it may be related to something as simple as an area of dug or mixed earth. A stronger anomaly ($\pm 250\text{nT}$) is more indicative of a spread of ferrous debris. Moderately strong anomalies may be the result of a spread of thermoremanent material such as bricks or ash.

Magnetic disturbance



Magnetic disturbance is high amplitude and can be composed of either a bipolar anomaly, or a single polarity response. It is essentially associated with magnetic interference from modern ferrous structures such as fencing, vehicles or buildings, and as a result is commonly found around the perimeter of a site near to boundary fences.

Negative linear

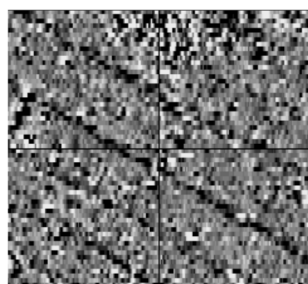


A linear response which is entirely negative in polarity. These are generally caused by earthen banks where material with a lower magnetic magnitude relative to the background top soil is built up. See also ploughing activity.

Negative point/area

Opposite to positive point anomalies these responses may be caused by raised areas or earthen banks. These could be of an archaeological origin or may have a natural origin.

Ploughing activity



Ploughing activity can often be visualised by a series of parallel linear anomalies. These can be of either positive polarity or negative polarity depending on site specifics. It can be difficult to distinguish between ancient ploughing and more modern ploughing. Clues such as the separation of each linear, straightness, strength of response and cross cutting relationships can be used to aid this, although none of these can be guaranteed to differentiate between different phases of activity.

Polarity

Term used to describe the measurement of the magnetic response. An anomaly can have a positive polarity (values above 0nT) and/or a negative polarity (values below 0nT).

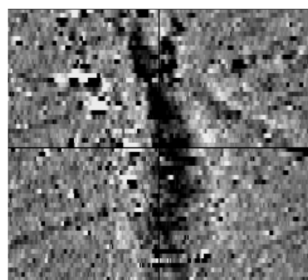
Strength of response

The amplitude of a magnetic response is an important factor in assigning an interpretation to a particular anomaly. For example a positive anomaly covering a 10m² area may have values up to around 3000nT, in which case it is likely to be caused by modern magnetic interference. However, the same size and shaped anomaly but with values up to only 4nT may have a natural origin. Colour plots are used to show the amplitude of response.

Thermoremanent response

A feature which has been subject to heat may result in it acquiring a magnetic field. This can be anything up to approximately +/-100 nT in value. These features include clay fired drains, brick, bonfires, kilns, hearths and even pottery. If the heat application has occurred in situ (e.g. a kiln) then the response is likely to be bipolar compared to if the heated objects have been disturbed and moved relative to each other, in which case they are more likely to take an irregular form and may display a debris style response (e.g. ash).

Weak background variations



Weakly magnetic wide scale variations within the data can sometimes be seen within sites. These usually have no specific structure but can often appear curvy and sinuous in form. They are likely to be the result of natural features, such as soil creep, dried up (or seasonal) streams. They can also be caused by changes in the underlying geology or soil type which may contain unpredictable distributions of magnetic minerals, and are usually apparent in several locations across a site.

Your Survey Partner

For a complete and complementary
range of survey services

*Survey services
you can rely on*

Archaeological
As Built Records
BIM Ready 3D Models
Boundary Disputes
CCTV
Geophysical
Laser Scanning
Measured Building
Pipeline Routes
Railway
Retrofit
Setting Out
Statutory Plan Collation
Topographic
Utility Mapping
UXO Detection
Void Detection

STRATASCAN LTD

Vineyard House Upper Hook Road Upton upon Severn
Worcestershire WR8 0SA United Kingdom

T:01684 592266 F: 01684 594142

info@stratascan.co.uk www.stratascan.co.uk

STRATASCAN™

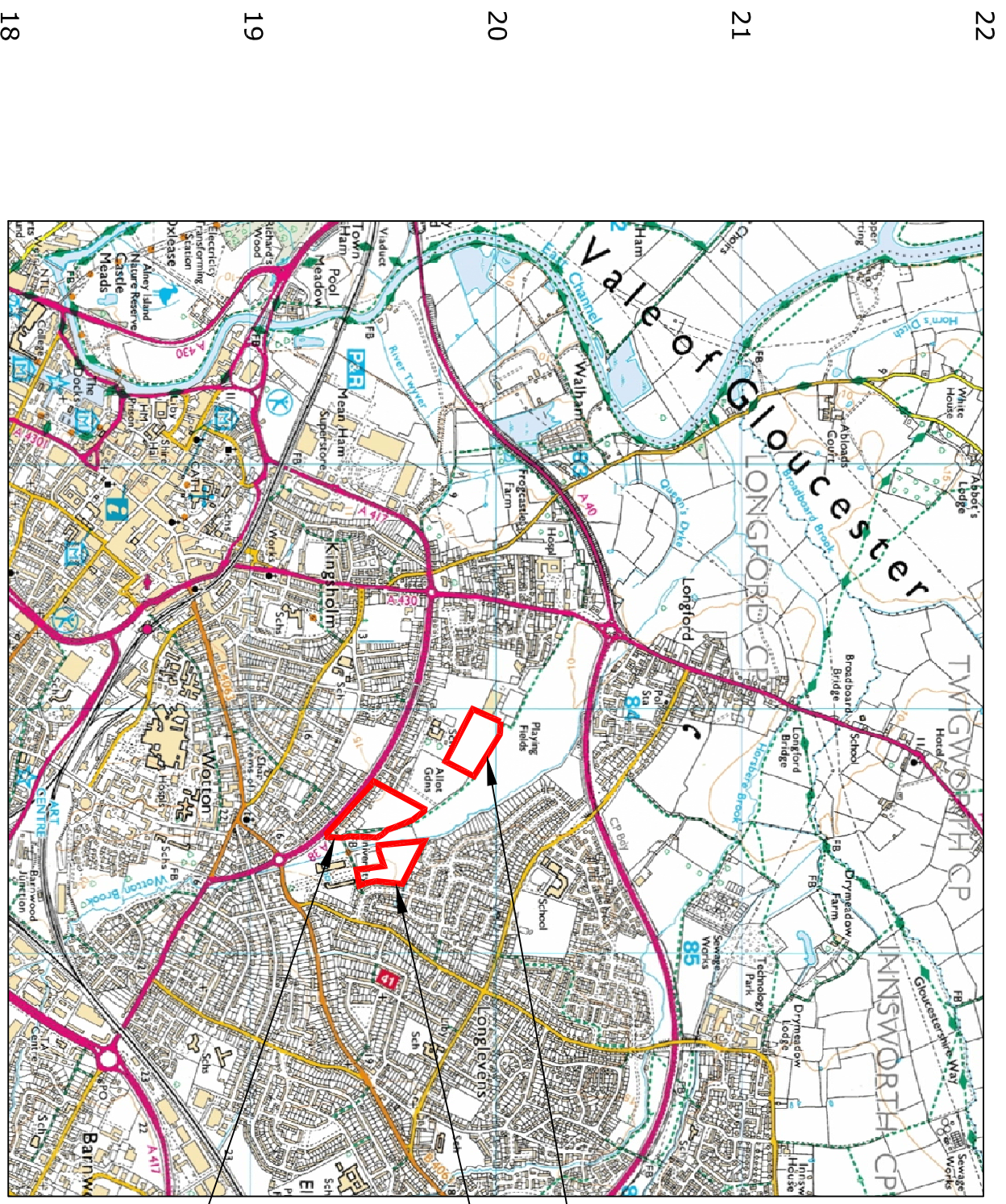


SUMO
Group
Member

Reproduced from Ordnance Survey's 1:25 000 map of 1998 with the permission of the controller of Her Majesty's Stationery Office. Crown Copyright reserved. Licence No.: AL 50125A

Licencees:
 Stratascan Ltd,
 Vineyard House
 Upper Hook Road
 Upton Upon Severn
 WR8 0SA

OS 100km square = SO



Area A
 Area B
 Area C

22
21
20
19
18

82
83
84
85
86



Amendments	
Issue No.	Date
-	-
-	-
© Stratascan Ltd - 2015	



Site centred on NGR SO 845 195

Client OXFORD ARCHAEOLOGY

Project Title GEOPHYSICAL SURVEY - UNIVERSITY OF GLOUCESTER, OXSTALLS CAMPUS

Subject LOCATION PLAN OF SURVEY AREA



VINEYARD HOUSE
 UPTON UPON SEVERN E: info@stratascan.co.uk
 WR8 0SA www.stratascan.co.uk

GPR ASSOCIATION

SUMO GROUP MEMBER

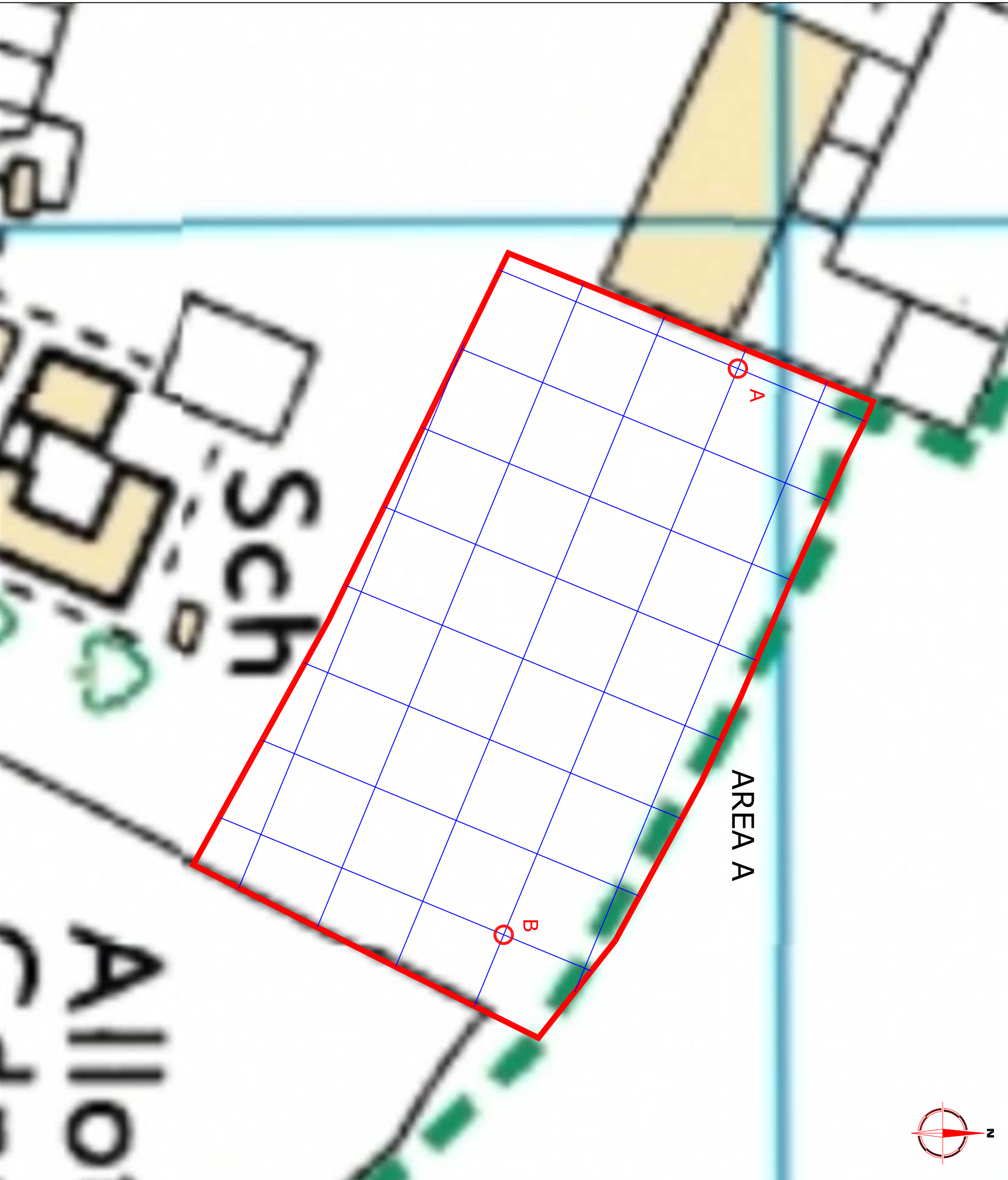
ISO 9001 certified

ISO 14001 certified

Scale 1:25000

0m 500m 1000m

Plot A3	Checked by DGE	Issue No. 01
Survey date AUG 15	Drawn by JHS	Figure No. 01



Amendments	
Issue No.	Date
-	-
-	-

© Stratascan Ltd - 2015

OS GRID REFERENCES

A	384048.23, 219982.59
B	384242.30, 219902.37

Client
OXFORD ARCHAEOLOGY

Project Title
GEOPHYSICAL SURVEY - UNIVERSITY OF GLOUCESTER, OXSTALLS CAMPUS

Job No. 8770
Job No. 8770
Job No. 8770

Subject
LOCATION OF SURVEY GRIDS AND REFERENCING- AREA A

STRATASCAN
GEOPHYSICS FOR ARCHAEOLOGY AND ENGINEERING

VINEYARD HOUSE
UPTON UPON SEVERN
WR8 0SA

T: 01684 592266
E: info@stratascan.co.uk
www.stratascan.co.uk

Scale 1:1250

0m 10 20 30 40 50m

Plot A3

Survey date AUG 15

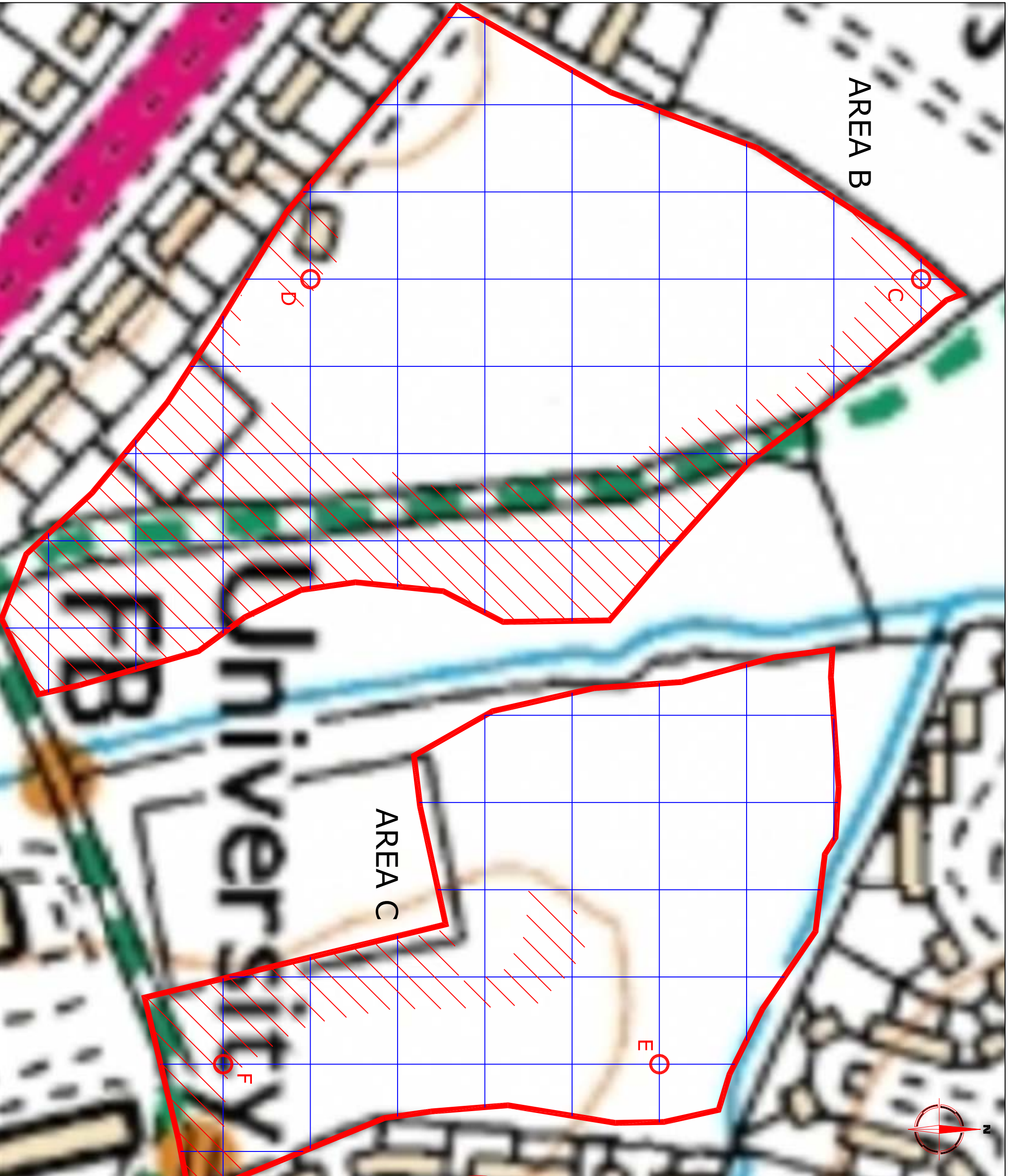
Checked by DGE

Drawn by JHS

Issue No. 01

Figure No. 02





Amendments	
Issue No.	Date
-	-
© Stratascan Ltd - 2015	

OS GRID REFERENCES	
C	384415.11, 219695.32
D	384415.11, 219485.32
E	384685.11, 219605.32
F	384685.11, 219455.32

Client
 OXFORD ARCHAEOLOGY

Project Title
 GEOPHYSICAL SURVEY - UNIVERSITY OF GLOUCESTER, OXSTALLS CAMPUS

Subject
 LOCATION OF SURVEY GRIDS AND REFERENCING - AREAS B & C

STRATASCAN
 GEOPHYSICS FOR ARCHAEOLOGY AND ENGINEERING

VINEYARD HOUSE
 UPTON UPON SEVERN WR8 0SA
 T: 01684 592266
 E: info@stratascan.co.uk
 www.stratascan.co.uk

GPR ASSOCIATION

SUMO GROUP MEMBER

ISO 9001 certified

ISO 14001 certified

Scale
 1:1250

0m 10 20 30 40 50m

Plot
 A3

Survey date
 AUG 15

Checked by
 DGE

Drawn by
 JHS

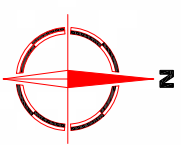
Issue No.
 01

Figure No.
 03

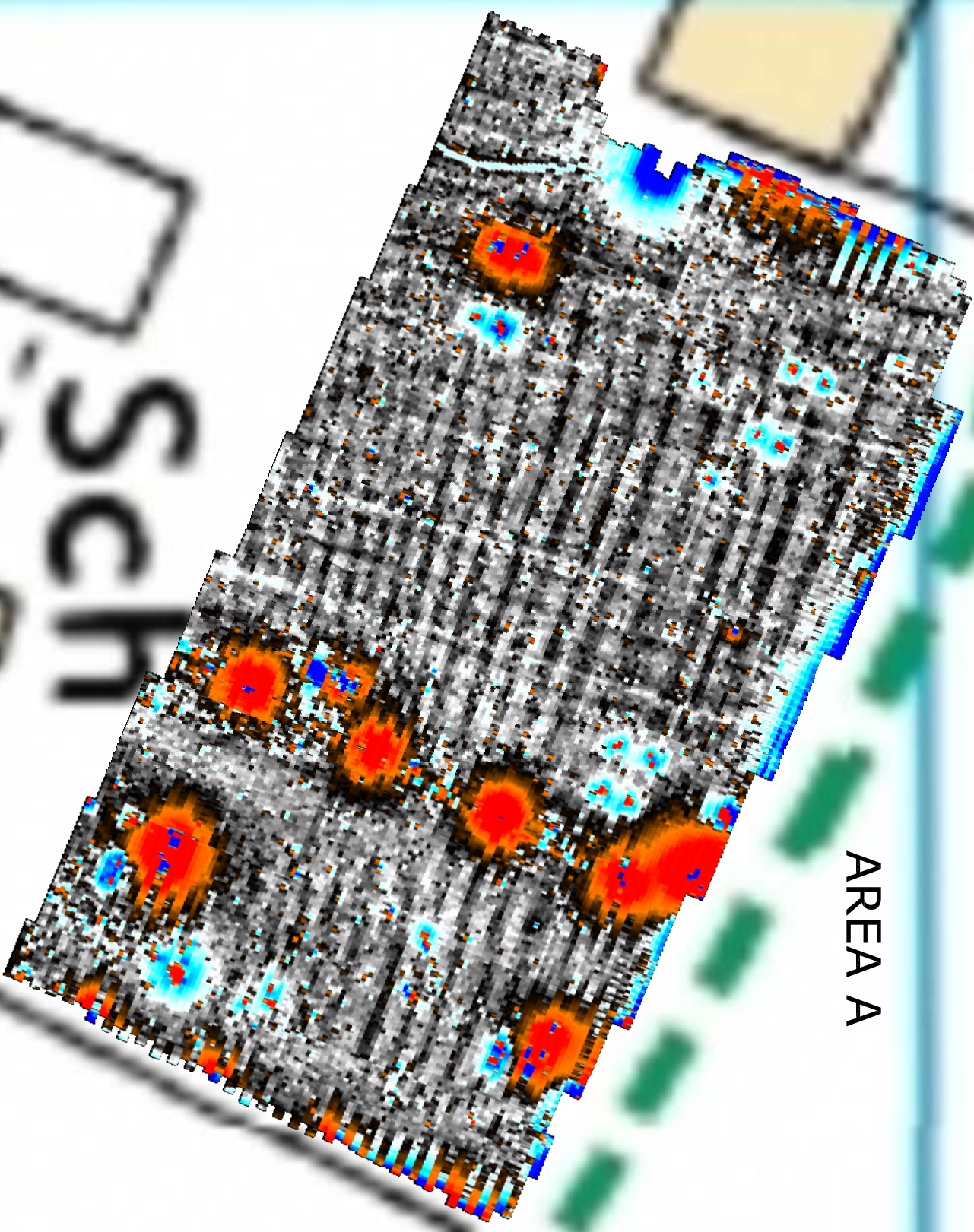
Amendments

Issue No.	Date	Description
-	-	-
-	-	-

© Stratascan Ltd - 2015



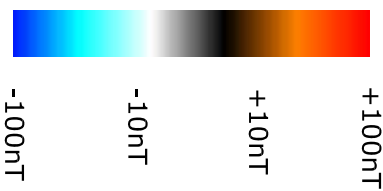
AREA A



Plotting parameters

Maximum +100nT (red)

Minimum -100nT (blue)



Client
OXFORD ARCHAEOLOGY

Project Title
GEOPHYSICAL SURVEY - UNIVERSITY OF GLOUCESTER, OXSTALLS CAMPUS

Subject
COLOUR PLOT OF GRADIOMETER DATA SHOWING EXTREME VALUES - AREA A

STRATASCAN
GEOPHYSICS FOR ARCHAEOLOGY AND ENGINEERING
VINEYARD HOUSE
UPTON UPON SEVERN E: info@stratascan.co.uk
WR8 0SA www.stratascan.co.uk

GPR
ERROFFAN ASSOCIATION
SUMO GROUP MEMBER
ISO 9001 certified
ISO 14001 certified

Scale
1:1250
0m 10 20 30 40 50m

Plot
A3
Checked by
DGE
Issue No.
01
Survey date
AUG 15
Drawn by
RD
Figure No.
04

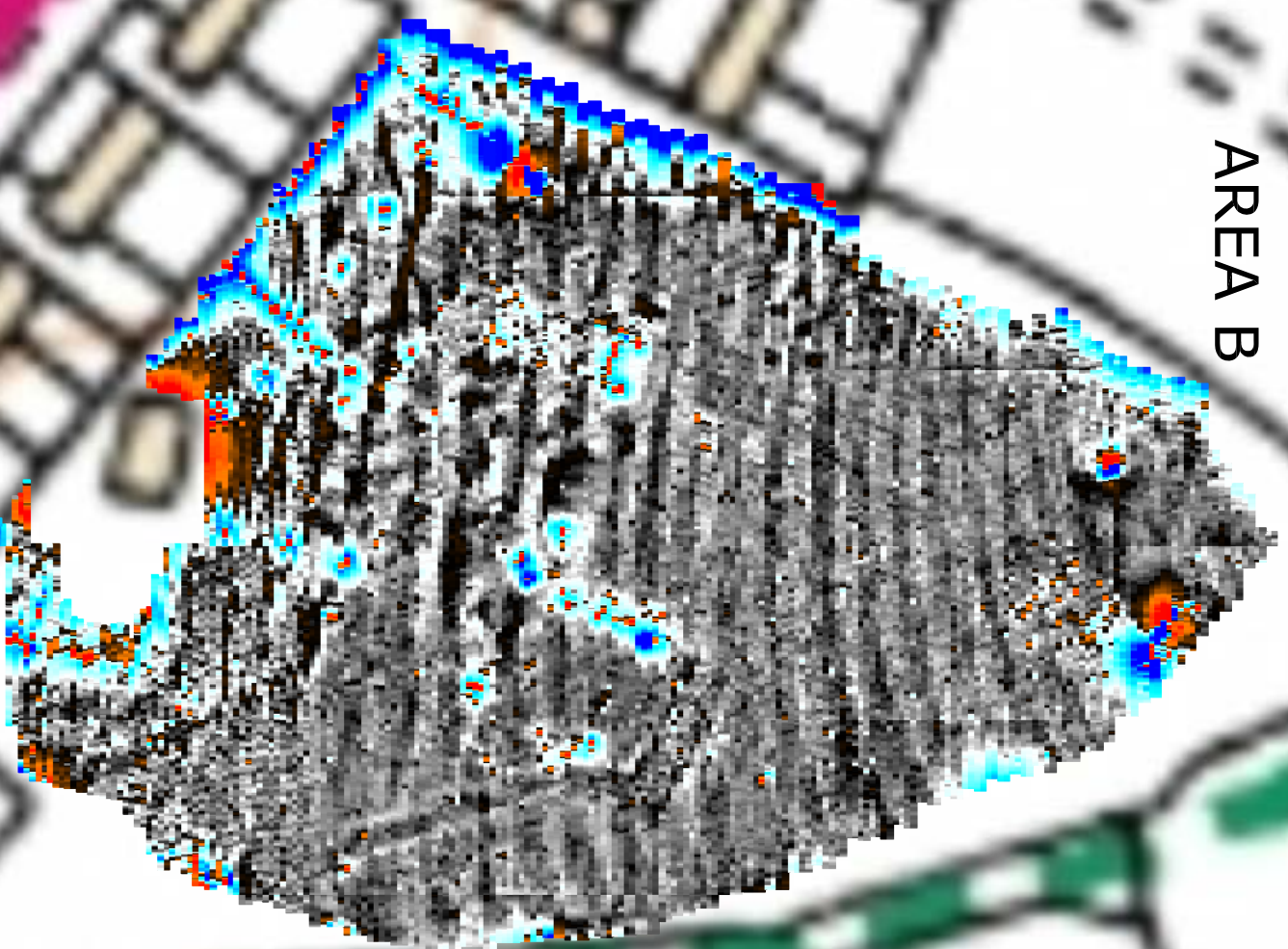
Amendments

Issue No.	Date	Description
-	-	-
-	-	-

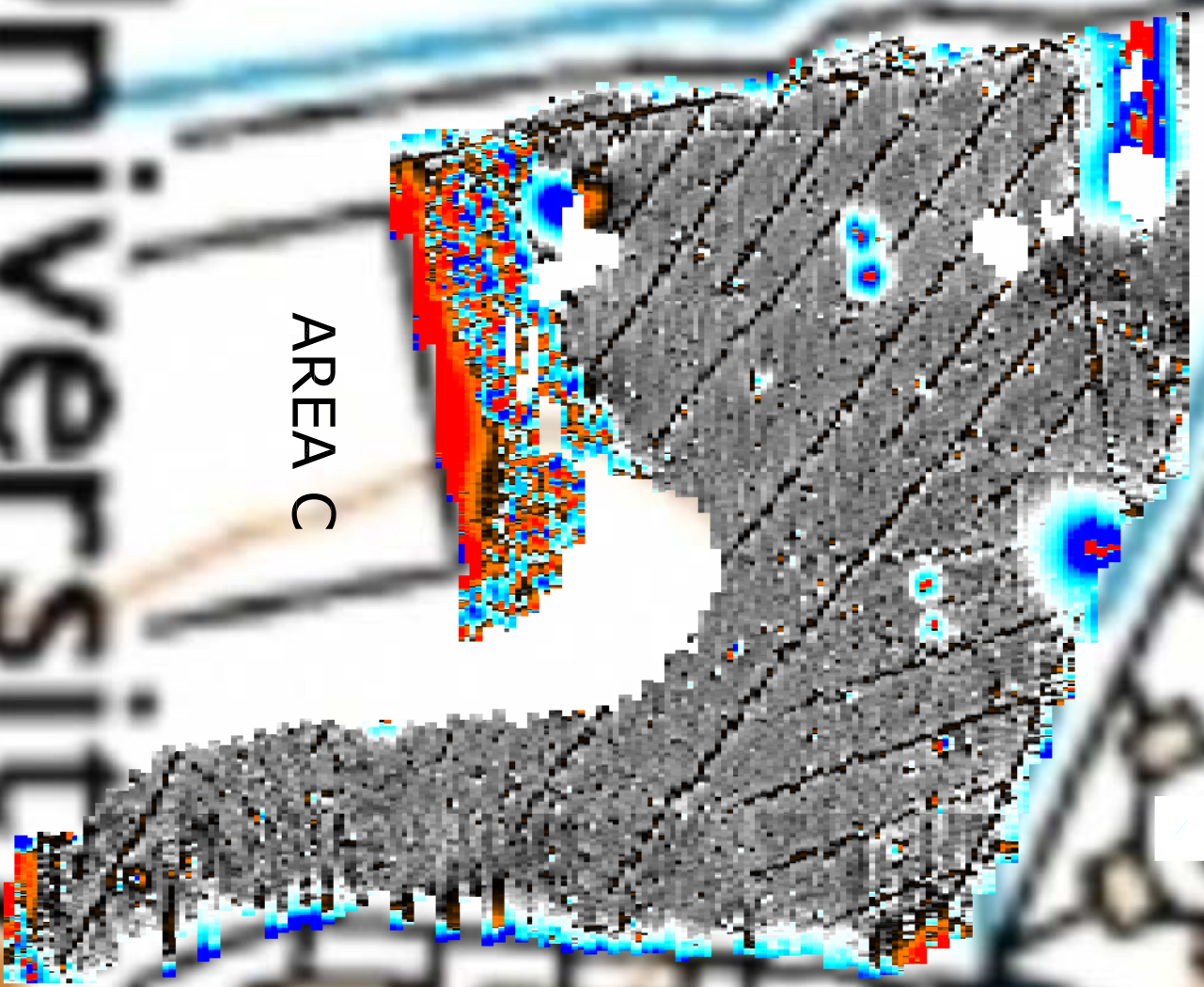
© Stratascan Ltd - 2015



AREA B

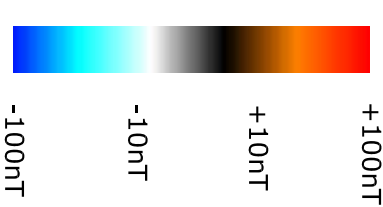


AREA C



Plotting parameters

Maximum +100nT (red)
Minimum -100nT (blue)



Client
OXFORD ARCHAEOLOGY

Project Title
GEOPHYSICAL SURVEY - UNIVERSITY OF GLOUCESTER, OXSTALLS CAMPUS

Subject
COLOUR PLOT OF GRADIOMETER DATA SHOWING EXTREME VALUES - AREAS B & C

STRATASCAN
GEOPHYSICS FOR ARCHAEOLOGY AND ENGINEERING

VINEYARD HOUSE
UPTON UPON SEVERN E: info@stratascan.co.uk
WR8 0SA www.stratascan.co.uk

ERRORS & OMISSIONS ASSOCIATION
GPR
SUMO GROUP MEMBER

ISO 9001 certified
ISO 14001 certified

Scale
1:1250

Plot
A3

Survey date
AUG 15

Checked by
DGE

Drawn by
RD

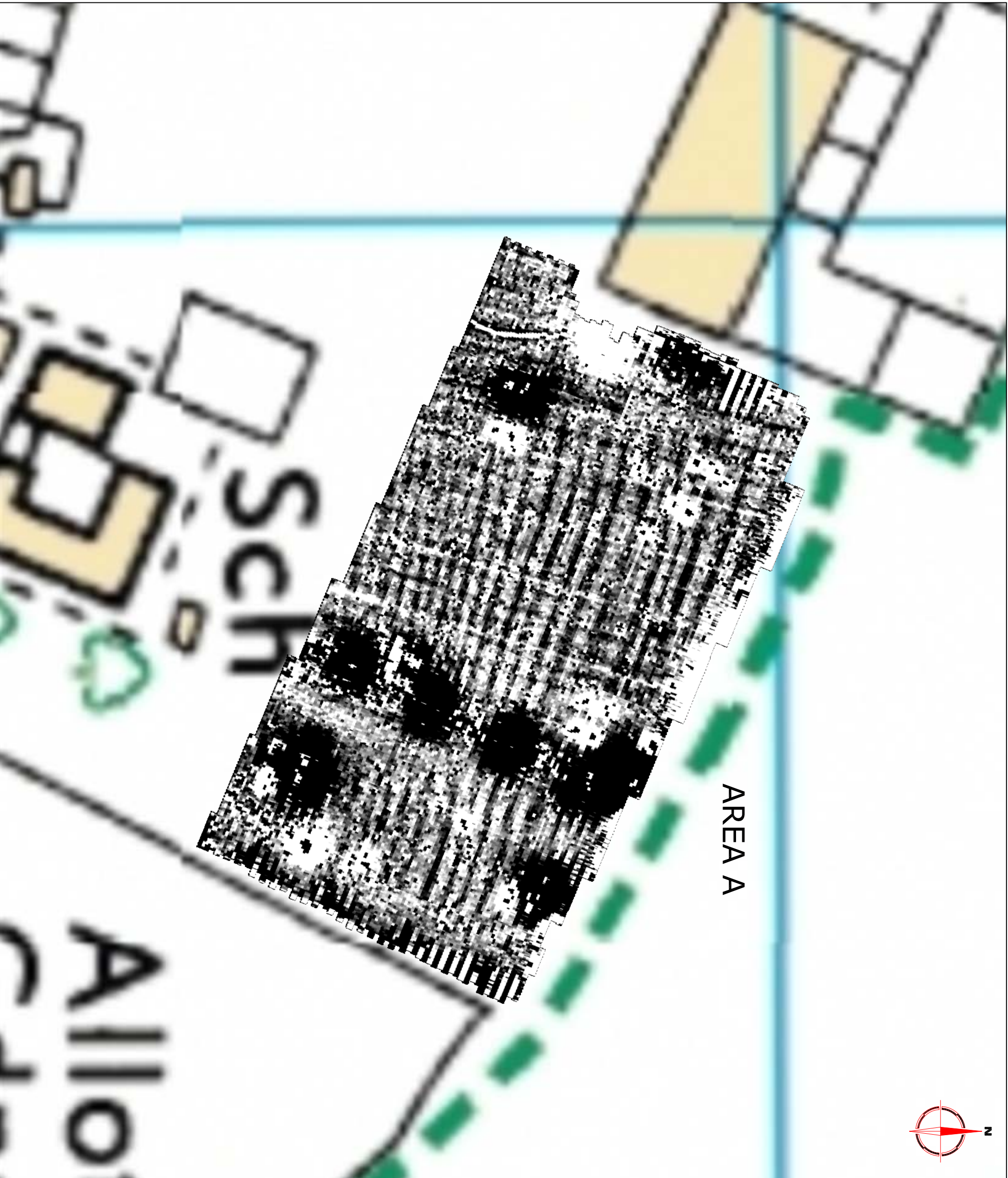
Issue No.
01

Figure No.
05

Amendments

Issue No.	Date	Description
-	-	-
-	-	-

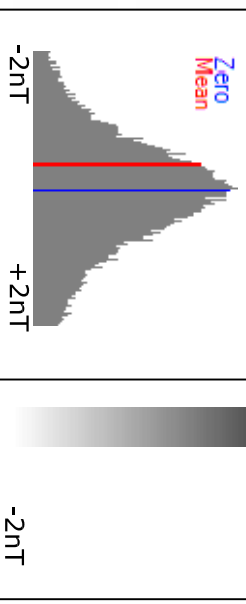
© Stratascan Ltd - 2015



AREA A

Plotting parameters +2nT

Maximum +2nT (black)
Minimum -2nT (white)



Client
OXFORD ARCHAEOLOGY

Project Title Job No. 8770
GEOPHYSICAL SURVEY - UNIVERSITY OF
GLOUCESTER, OXSTALLS CAMPUS

Subject
PLOT OF MINIMALLY PROCESSED
GRADIOMETER DATA - AREA A

STRATASCAN
GEOPHYSICS FOR ARCHAEOLOGY
AND ENGINEERING
VINEYARD HOUSE
UPTON UPON SEVERN E: info@stratascan.co.uk
WR8 0SA www.stratascan.co.uk
T: 01684 592266

GPR ASSOCIATION
SUMO GROUP MEMBER
ISO 9001 certified
ISO 14001 certified
UKAS

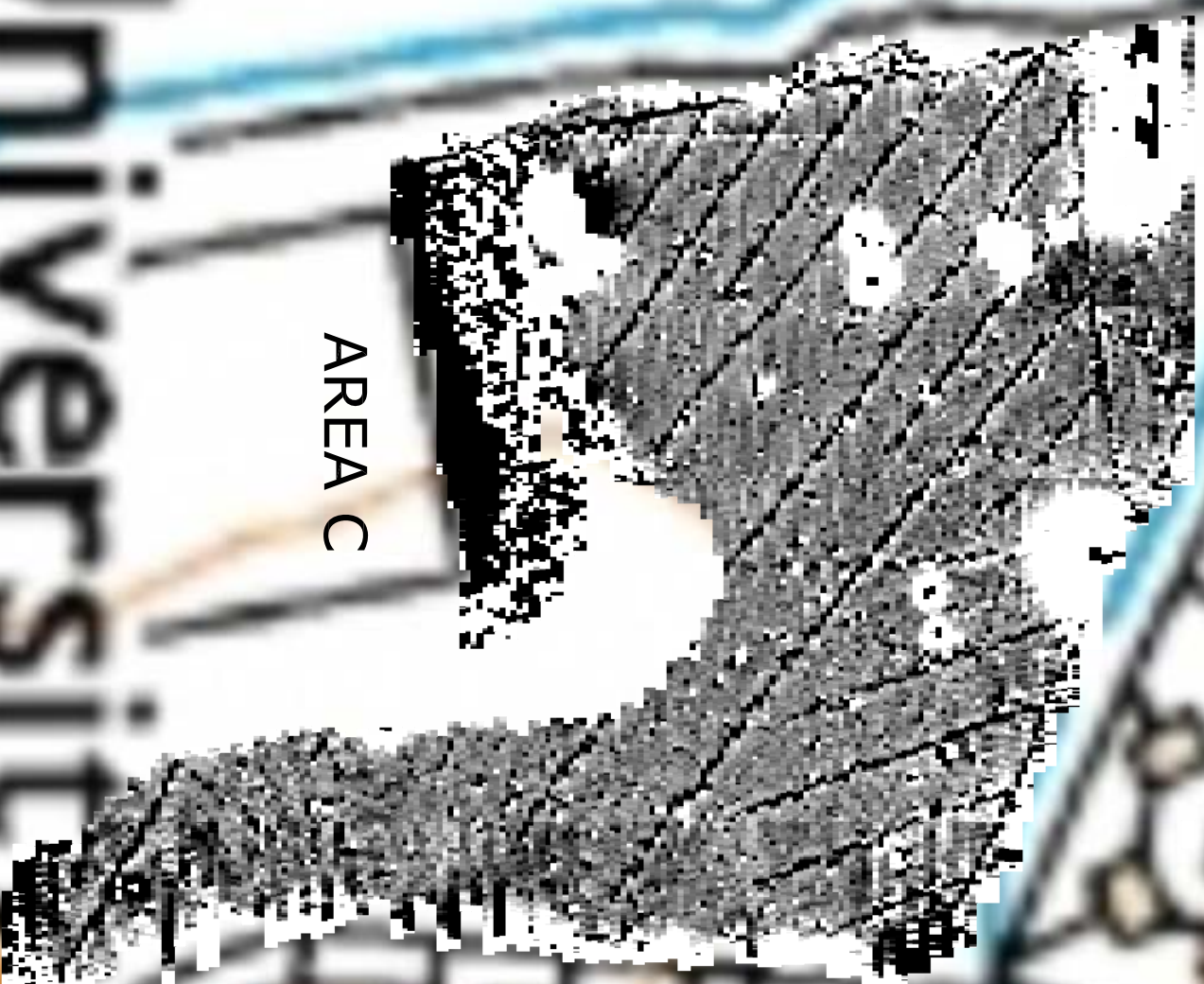
Scale 1:1250
0m 10 20 30 40 50m

Plot A3
Survey date AUG 15
Checked by DGE
Drawn by RD
Issue No. 01
Figure No. 06

AREA B



AREA C



Amendments

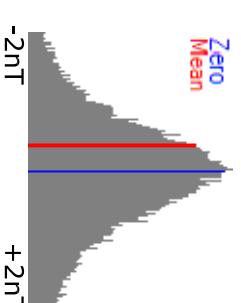
Issue No.	Date	Description
-	-	-
-	-	-

© Stratascan Ltd - 2015

Plotting parameters

+2nT

Maximum +2nT (black)
Minimum -2nT (white)



-2nT

Client
OXFORD ARCHAEOLOGY

Project Title
GEOPHYSICAL SURVEY - UNIVERSITY OF GLOUCESTER, OXSTALLS CAMPUS

Job No. 8770

Subject
PLOT OF MINIMALLY PROCESSED GRADIOMETER DATA - AREAS B & C



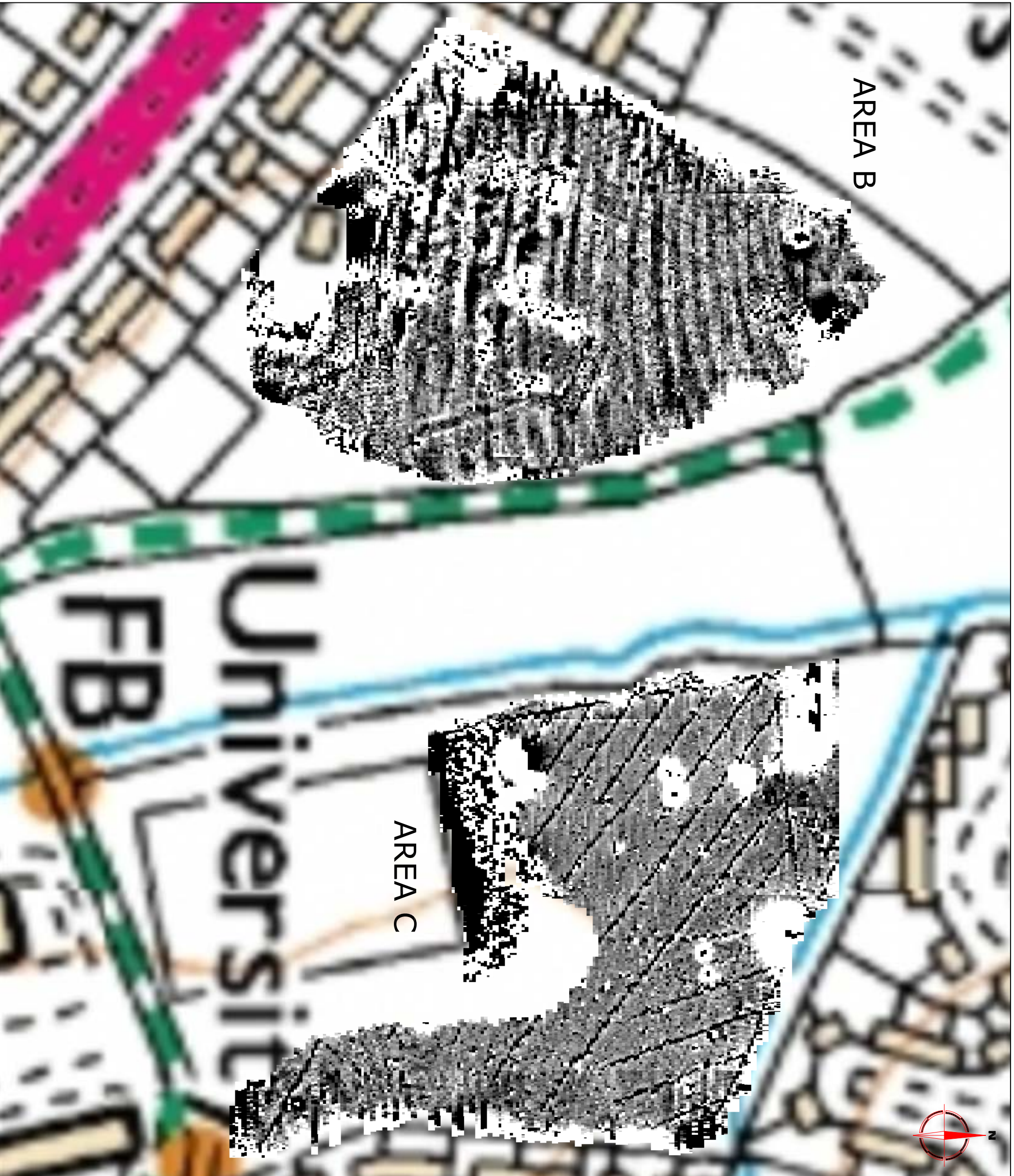
GEOPHYSICS FOR ARCHAEOLOGY
AND ENGINEERING
VINEYARD HOUSE
UPTON UPON SEVERN E: info@stratascan.co.uk
WR8 0SA www.stratascan.co.uk

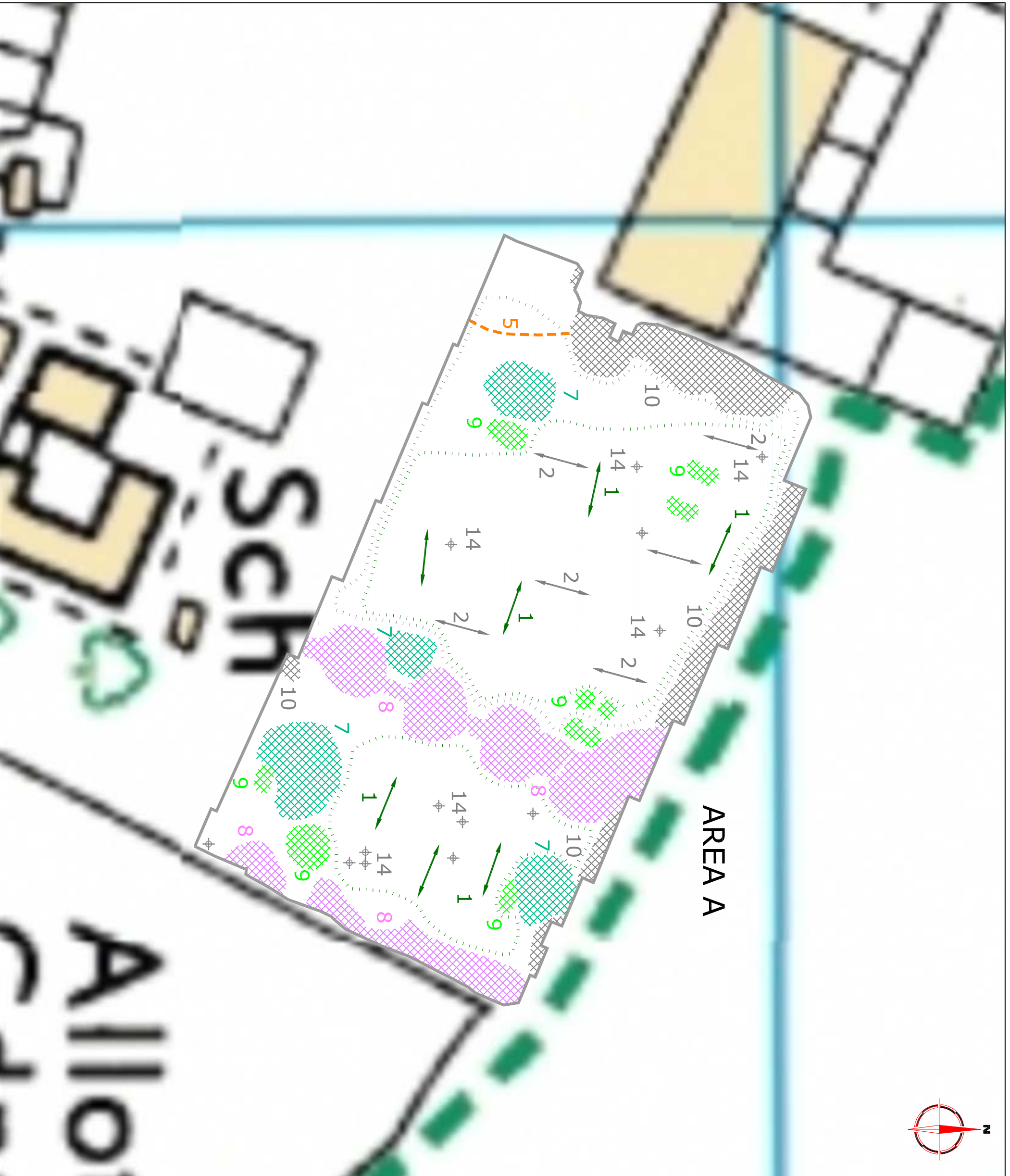


Scale
1:1250



Plot A3	Checked by DGE	Issue No. 01
Survey date AUG 15	Drawn by RD	Figure No. 07





Amendments

Issue No.	Date	Description
-	-	-
-	-	-
© Stratascan Ltd - 2015		
PROBABLE ARCHAEOLOGY		
		Positive anomaly / weak positive anomaly - probable cut feature of archaeological origin
		Negative anomaly / weak negative anomaly - probable bank or earthwork of archaeological origin
POSSIBLE ARCHAEOLOGY		
		Positive anomaly / weak positive anomaly - possible cut feature or archaeological origin
		Negative anomaly / weak negative anomaly - possible bank or earthwork of archaeological origin
MEDIAVAL/POST-MEDIAVAL AGRICULTURE		
		Widely spaced curving parallel linear anomalies - probably related to ridge-and-furrow
		Closely spaced parallel linear anomalies - probably related to agricultural activity such as ploughing
OTHER ANOMALIES		
		Linear anomaly - probably related to pipe, cable or other modern service
		Linear anomaly - unknown origin, likely to be modern
		Linear anomaly - possibly related to hand drain
		Linear anomaly - related to pathway visible on aerial photography
		Linear anomaly - possibly related to former track or footpath
		Magnetic disturbance related to goal-post on playing field
		Magnetic disturbance related to floodlights
		Magnetic disturbance of unknown origin, likely related to features of playing field
		Magnetic disturbance associated with nearby metal object such as service or field boundary
		Strong magnetic debris - possible disturbed or made ground
		Scattered magnetic debris
		Area of anomalous magnetic variation - probable natural (e.g. geological or pedological) origin
		Magnetic spike - probable ferrous object

Client
OXFORD ARCHAEOLOGY

Project Title Job No. 8770
GEOPHYSICAL SURVEY - UNIVERSITY OF GLOUCESTER, OXSTALLS CAMPUS

Subject
ABSTRACTION AND INTERPRETATION OF GRADIOMETER ANOMALIES - AREA A

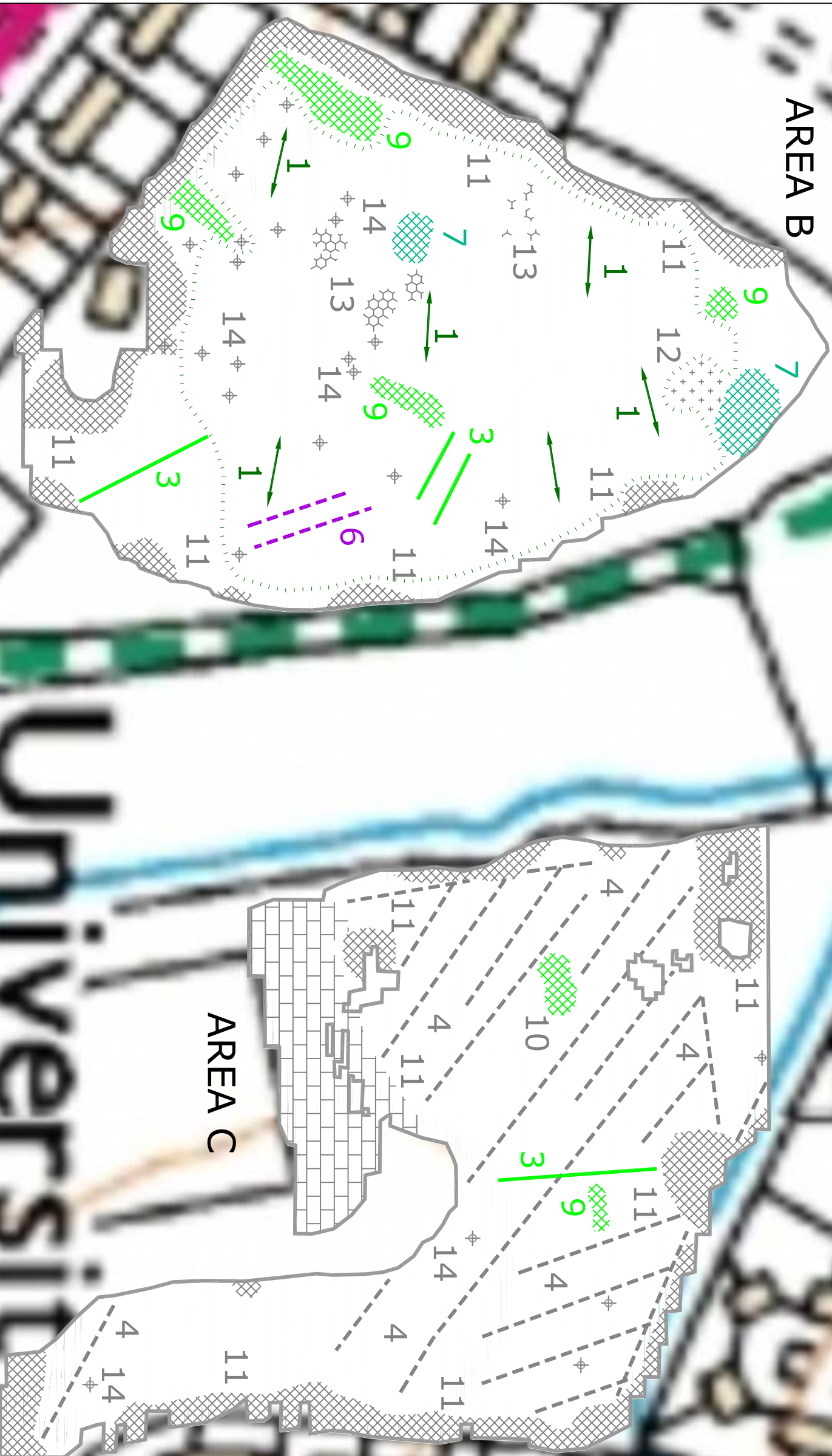
STRATASCAN
GEOPHYSICS FOR ARCHAEOLOGY AND ENGINEERING
VINEYARD HOUSE T: 01684 592266
UPTON UPON SEVERN E: info@stratascan.co.uk
WR8 0SA www.stratascan.co.uk

ERRORS & OMISSIONS ASSOCIATION
GPR
SUMO GROUP MEMBER
ISO 9001 certified
ISO 14001 certified
UKAS

Scale 1:1250
0m 10 20 30 40 50m

Plot A3
Checked by DGE Issue No. 01

Survey date AUG 15
Drawn by RD Figure No. 08



AREA B

AREA C

Amendments

Issue No.	Date	Description
-	-	-
-	-	-

© Stratascan Ltd - 2015

PROBABLE ARCHAEOLOGY

- Positive anomaly / weak positive anomaly - probable cut feature of archaeological origin
- Negative anomaly / weak negative anomaly - probable bank or earthwork of archaeological origin

POSSIBLE ARCHAEOLOGY

- Positive anomaly / weak positive anomaly - possible cut feature of archaeological origin
 - Negative anomaly / weak negative anomaly - possible bank or earthwork of archaeological origin
- MEDIAVAL/POST-MEDIAVAL AGRICULTURE**
- Widely spaced curving parallel linear anomalies - probably related to ridge-and-furrow
 - Closely spaced parallel linear anomalies - probably related to agricultural activity such as ploughing

OTHER ANOMALIES

- Linear anomaly - probably related to pipe, cable or other modern service
- Linear anomaly - unknown origin, likely to be modern
- Linear anomaly - possibly related to land drain
- Linear anomaly - related to pathway visible on aerial photography
- Linear anomaly - possibly related to former track or footpath
- Linear anomaly - related to goal-post on playing field
- Magnetic disturbance related to floodlights
- Magnetic disturbance of unknown origin, likely related to features of playing field
- Magnetic disturbance associated with nearby metal object such as service or field boundary
- Strong magnetic debris - possible disturbed or made ground
- Scattered magnetic debris
- Area of amorphous magnetic variation - probable natural (e.g. geological or pedological) origin
- Magnetic spike - probable ferrous object

Client
OXFORD ARCHAEOLOGY

Project Title
GEOPHYSICAL SURVEY - UNIVERSITY OF GLOUCESTER, OXSTALLS CAMPUS

Job No. 8770
ABSTRACTION AND INTERPRETATION OF GRADIOMETER ANOMALIES - AREAS B & C

Subject
STRATASCAN™

STRATASCAN™
GEOPHYSICS FOR ARCHAEOLOGY AND ENGINEERING
T: 01684 592266
E: info@stratascan.co.uk
www.stratascan.co.uk

VINEYARD HOUSE
UPTON UPON SEVERN
WR8 0SA

GPR
ERROFFIAN ASSOCIATION

SUMO
SUMO GROUP MEMBER

IMS
ISO 9001 certified

IMS
ISO 14001 certified

Scale
1:1250

0m 10 20 30 40 50m

Plot
A3

Checked by
DGE

Issue No.
01

Survey date
AUG 15

Drawn by
RD

Figure No.
09

