




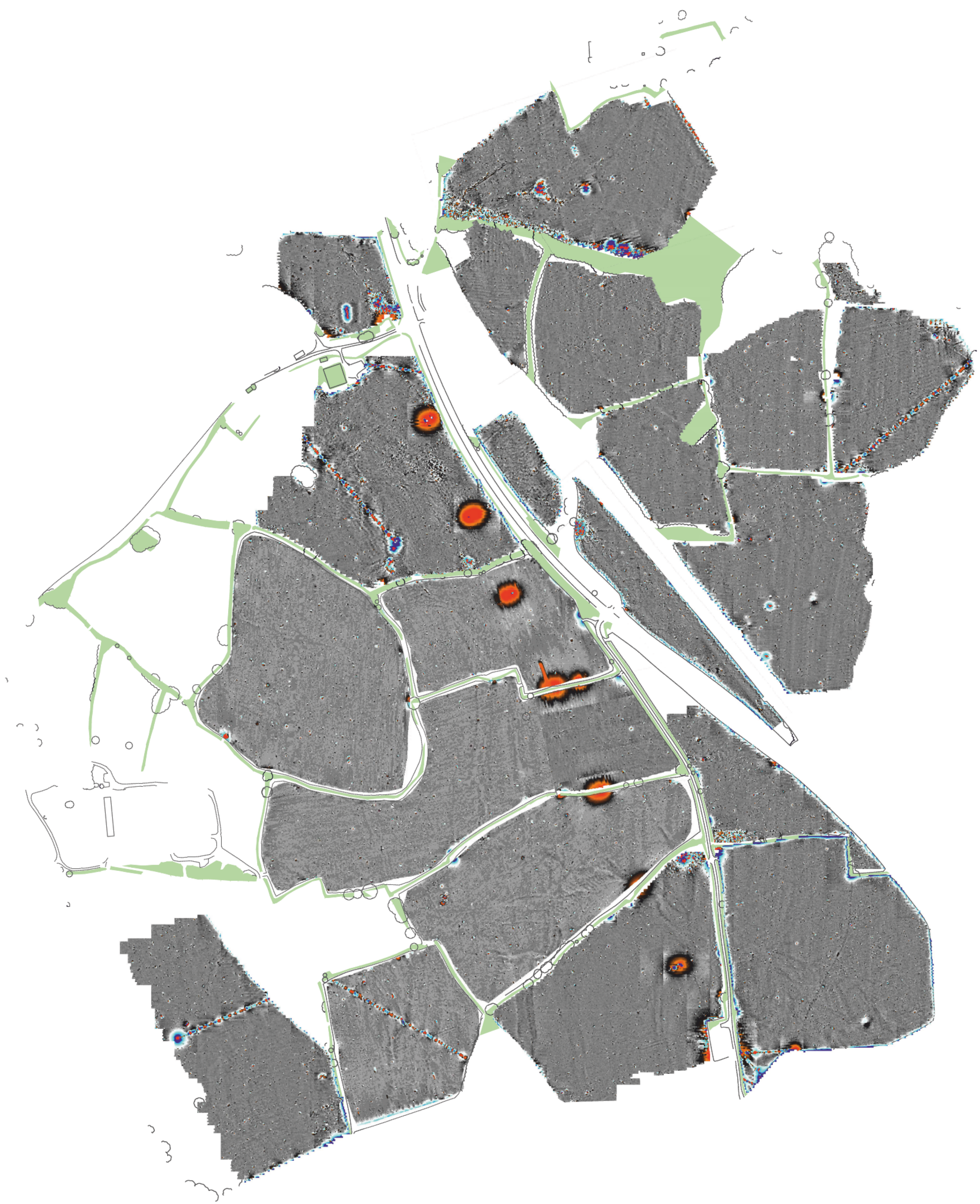
Reproduced from Ordnance Survey's 1:25 000 map of 1998 with the permission of the controller of Her Majesty's Stationary Office. Crown Copyright reserved. Licence No. AL 90125A  
Licences:  
Stratascan Ltd.  
Vineyard House  
Upper Hook Road  
Upton Upon Severn  
WR8 0SA  
OS 100km square = SO



Site centred on NGR SO 673 013

Amendments		
Issue No.	Date	Description
-	-	-
-	-	-
© Stratascan Ltd - 2014		
<div><div>Survey area</div></div> <div>Site centred on NGR SO 673 013</div>		
OS REFERENCING INFORMATION		
A	367251.91, 201438.31	
B	367251.91, 201378.31	
C	367641.91, 201648.31	
D	367641.91, 201468.31	
E	367461.91, 201348.31	
F	367461.91, 201438.31	
G	367611.91, 201288.31	
H	367611.91, 201408.31	
I	367671.91, 201138.31	
J	367671.91, 201258.31	
K	367821.91, 201198.31	
L	367821.91, 201348.31	
M	367971.91, 201198.31	
N	367971.91, 201348.31	
O	367851.91, 200898.31	
P	367851.91, 201138.31	
Q	367491.91, 201138.31	
R	367491.91, 201198.31	
S	367641.91, 200988.31	
T	367641.91, 201048.31	
U	367341.91, 201048.31	
V	367341.91, 201288.31	
W	367191.91, 200808.31	
X	367191.91, 201048.31	
Y	367491.91, 200928.31	
Z	367491.91, 201048.31	
AA	367401.91, 200718.31	
AB	367401.91, 200868.31	
AC	367521.91, 200568.31	
AD	367521.91, 200718.31	
AE	367671.91, 200478.31	
AF	367671.91, 200628.31	
AG	367341.91, 200358.31	
AH	367341.91, 200538.31	
AI	367101.91, 200358.31	
AJ	367101.91, 200538.31	
AK	367761.91, 200718.31	
AL	367761.91, 200808.31	
AM	367851.91, 200448.31	
AN	367851.91, 200688.31	
Job No.	7386	Survey Date
Client	OCT 14	
AVON ARCHAEOLOGY		
Project Title		
GEOPHYSICAL SURVEY - SHARPNESS, GLOUCESTERSHIRE		
Subject		
SITE LOCATION AND SURVEY AREA & REFERENCING		
<div><div>STRATASCAN™</div><div>GEOPHYSICS FOR ARCHAEOLOGY AND ENGINEERING</div><div>VINEYARD HOUSE UPTON UPON SEVERN WR8 0SA</div><div>T: 01684 592266 E: info@stratascan.co.uk www.stratascan.co.uk</div></div>		
<div><div><div>GPR ASSOCIATION</div><div>SUMO GROUP MEMBER</div></div><div><div>ISO 9001 certified</div><div>ISO 14001 certified</div><div>ISO 45001 certified</div></div></div>		
Scale	1:3000	
Plot	A1	Issue No. 01
Date	NOV 14	Figure No. 01





Amendments		
Issue No.	Date	Description
-	-	-
-	-	-
© Stratascan Ltd - 2014		


  

Plotting parameters		<div>+100nT</div> <div>+25nT</div> <div>+3nT</div> <div>-3nT</div> <div>-25nT</div> <div>-100nT</div>
Maximum +100nT (red)		
Minimum -100nT (blue)		

Job No.	7386	Survey Date	OCT 14
Client			
AVON ARCHAEOLOGY			
Project Title			
GEOPHYSICAL SURVEY - SHARPNESS, GLOUCESTERSHIRE			
Subject			
COLOUR PLOT OF GRADIOMETER DATA SHOWING EXTREME VALUES - OVERVIEW			
VINEYARD HOUSE T: 01684 592266 UPTON UPON SEVERN E: info@stratascan.co.uk WR8 0SA www.stratascan.co.uk			
Scale 1:3000 0m 30 60 90 120 150 180m			
Plot	A1	Checked by	DGE
Date	NOV 14	Issue No.	01
		Figure No.	02



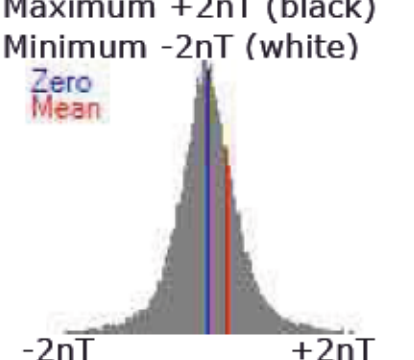




Amendments		
Issue No.	Date	Description
-	-	-
-	-	-
© Stratascan Ltd - 2014		

Plotting parameters





Maximum +2nT (black)  
Minimum -2nT (white)  
Zero  
Mean



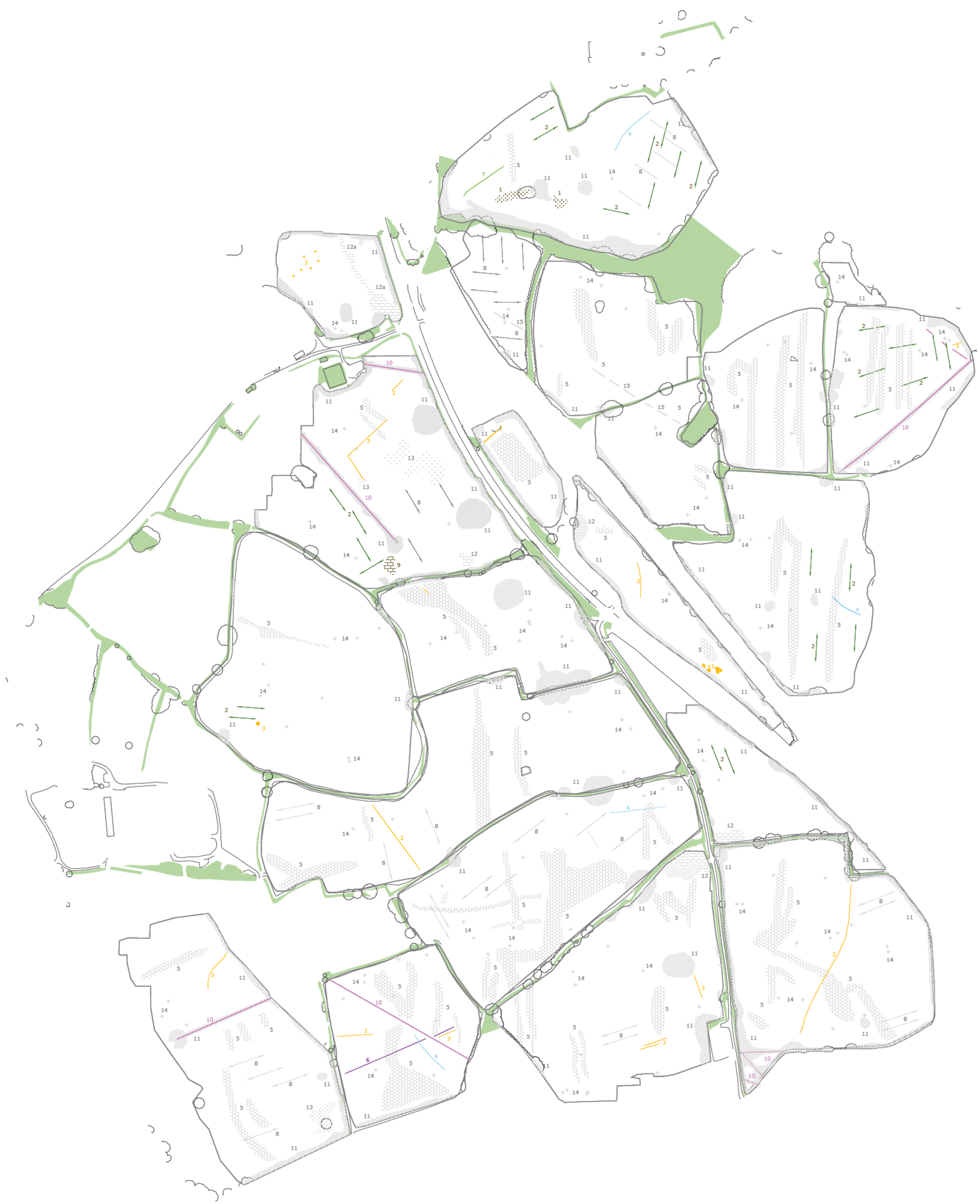
-2nT      +2nT

+2nT

-2nT

Job No.	7386	Survey Date	OCT 14
Client			
AVON ARCHAEOLOGY			
Project Title			
GEOPHYSICAL SURVEY - SHARPNESS, GLOUCESTERSHIRE			
Subject			
PLOT OF MINIMALLY PROCESSED GRADIOMETER DATA - OVERVIEW			
 GEOPHYSICS FOR ARCHAEOLOGY AND ENGINEERING			
VINEYARD HOUSE      T: 01684 592266 UPTON UPON SEVERN      E: info@stratascan.co.uk WR8 0SA      www.stratascan.co.uk			
 SUMO GROUP MEMBER			
 SUMO GROUP MEMBER			
 SUMO GROUP MEMBER			
Scale			
1:3000			
0m 30 60 90 120 150 180m			
Plot	Checked by	Issue No.	
A1	DGE	01	
Date	Drawn by	Figure No.	
NOV 14	RD	03	





Amendments		
Issue No.	Date	Description
-	-	-
-	-	-
© Stratascan Ltd - 2014		

### KEY

#### PROBABLE ARCHAEOLOGY

- Positive anomaly / weak positive anomaly - probable cut feature of archaeological origin
- Negative anomaly / weak negative anomaly - probable bank or earthwork of archaeological origin
- Scattered magnetic debris related to former field boundary visible on mapping 1881-1972
- Widely spaced curving parallel linear anomalies - probably related to ridge-and-furrow

#### POSSIBLE ARCHAEOLOGY

- Positive anomaly / weak positive anomaly - possible cut feature of archaeological origin
- Negative anomaly / weak negative anomaly - possible bank or earthwork of archaeological origin
- Area of amorphous magnetic variation - possible natural (geological or pedological) or ridge and furrow
- Linear anomaly - possibly related to a former field boundary, not visible on available historic mapping

#### OTHER ANOMALIES

- Positive anomalies of unknown origin
- Closely spaced parallel linear anomalies - probably related to agricultural activity such as ploughing
- Area of strong magnetic debris related to former pond visible on mapping from 1888 to 1995
- Linear anomaly - probably related to pipe, cable or other modern service
- Magnetic disturbance associated with nearby metal object such as service or field boundary
- Strong magnetic debris - possible disturbed or made ground
- Scattered magnetic debris
- Magnetic spike - probable ferrous object
- Linear anomaly - possible drainage channel related to a pond

Job No.	7386	Survey Date	OCT 14
Client			

### AVON ARCHAEOLOGY

Project Title

**GEOPHYSICAL SURVEY - SHARPNESS, GLOUCESTERSHIRE**

Subject

**ABSTRACTION AND INTERPRETATION OF GRADIOMETER ANOMALIES - OVERVIEW**

**STRATASCAN**<sup>TM</sup>  
GEOPHYSICS FOR ARCHAEOLOGY AND ENGINEERING

VINEYARD HOUSE  
UPTON UPON SEVERN  
WR8 0SA

T: 01684 592266  
E: info@stratascan.co.uk  
www.stratascan.co.uk

**GPR**  
ASSOCIATION

**SUMO**  
SURVEYING  
MEMBER

**SUMO**  
GROUP  
MEMBER

**IMS**  
ISO 9001  
certified

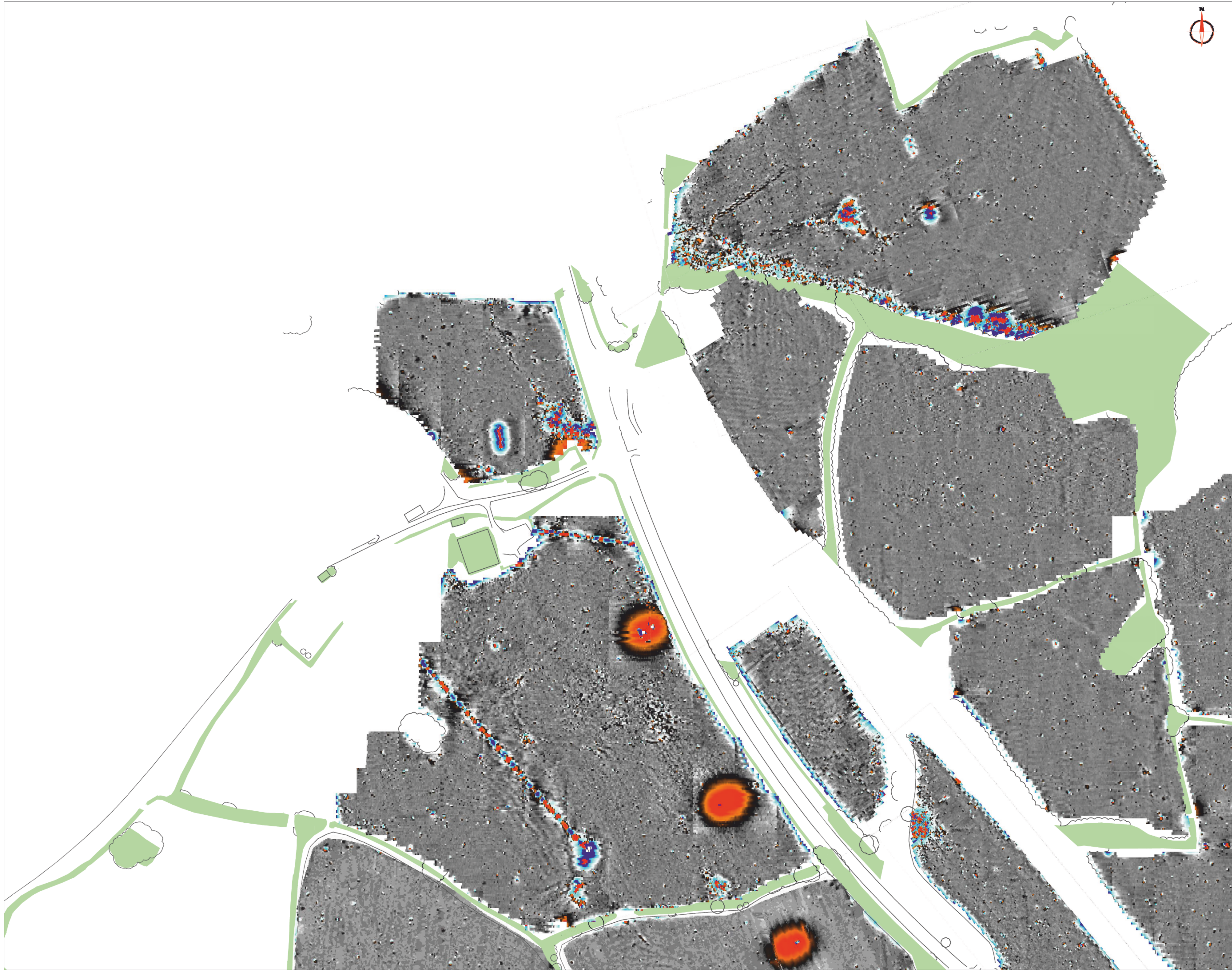
**IMS**  
ISO 14001  
certified

**IMS**  
ISO 45001  
certified

Scale	0m 30 60 90 120 150 180m				
1:3000					

Plot	Checked by	Issue No.
A1	DGE	01
Date	Drawn by	Figure No.
NOV 14	RD	04





Amendments		
Issue No.	Date	Description
-	-	-
-	-	-
© Stratascan Ltd - 2014		

Plotting parameters

Maximum +100nT (red)  
Minimum -100nT (blue)

+100nT

+25nT

+3nT

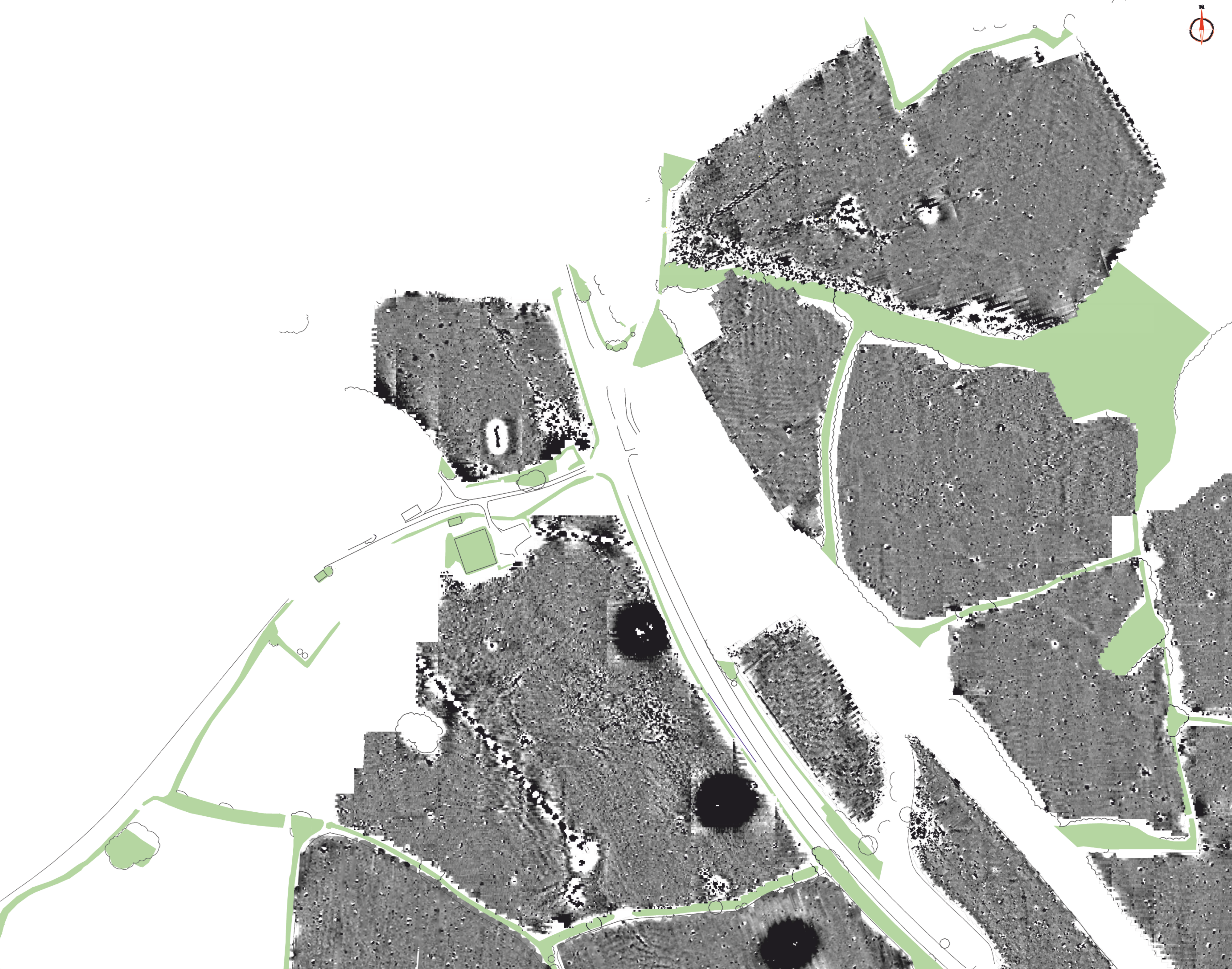
-3nT

-25nT

-100nT

Job No.	7386	Survey Date	OCT 14
Client			
AVON ARCHAEOLOGY			
Project Title			
GEOPHYSICAL SURVEY - SHARPNESS, GLOUCESTERSHIRE			
Subject			
COLOUR PLOT OF GRADIOMETER DATA SHOWING EXTREME VALUES - NORTH WEST			
GEOPHYSICS FOR ARCHAEOLOGY AND ENGINEERING			
VINEYARD HOUSE UPTON UPON SEVERN WR8 0SA			
T: 01684 592266 E: info@stratascan.co.uk www.stratascan.co.uk			
SUMO GROUP MEMBER			
IMS ISO 9001 certified			
UKAS ISO 9001 certified			
Scale			
0m 10 20 30 40 50 60 70 80m			
1:1250			
Plot	A1	Checked by	DGE
Date	NOV 14	Issue No.	01
		Drawn by	RD
		Figure No.	05





Amendments		
Issue No.	Date	Description
-	-	-
-	-	-

© Stratascan Ltd - 2014

Plotting parameters

Maximum +2nT (black)  
Minimum -2nT (white)  
Zero  
Mean

-2nT      +2nT

+2nT  
-2nT

Job No.	7386	Survey Date	OCT 14
Client			
AVON ARCHAEOLOGY			
Project Title			
GEOPHYSICAL SURVEY - SHARPNESS, GLOUCESTERSHIRE			
Subject			
PLOT OF MINIMALLY PROCESSED GRADIOMETER DATA - NORTH WEST			

**STRATASCAN**<sup>TM</sup>  
GEOPHYSICS FOR ARCHAEOLOGY  
AND ENGINEERING

VINEYARD HOUSE  
UPTON UPON SEVERN  
WR8 0SA

T: 01684 592266  
E: info@stratascan.co.uk  
www.stratascan.co.uk

SUMO GROUP MEMBER

Scale

1:1250

0m 10 20 30 40 50 60 70 80m

Plot	A1	Checked by	DGE	Issue No.	01
Date	NOV 14	Drawn by	RD	Figure No.	06





Amendments		
Issue No.	Date	Description
-	-	-
© Stratascan Ltd - 2014		

### KEY

**PROBABLE ARCHAEOLOGY**

- Positive anomaly / weak positive anomaly - probable cut feature of archaeological origin
- Negative anomaly / weak negative anomaly - probable bank or earthwork of archaeological origin
- Scattered magnetic debris related to former field boundary visible on mapping 1881-1972
- Widely spaced curving parallel linear anomalies - probably related to ridge-and-furrow

**POSSIBLE ARCHAEOLOGY**

- Positive anomaly / weak positive anomaly - possible cut feature of archaeological origin
- Negative anomaly / weak negative anomaly - possible bank or earthwork of archaeological origin
- Area of amorphous magnetic variation - possible natural (geological or pedological) or ridge and furrow
- Linear anomaly - possibly related to a former field boundary, not visible on available historic mapping

**OTHER ANOMALIES**

- Positive anomalies of unknown origin
- Closely spaced parallel linear anomalies - probably related to agricultural activity such as ploughing
- Area of strong magnetic debris related to former pond visible on mapping from 1888 to 1995
- Linear anomaly - probably related to pipe, cable or other modern service
- Magnetic disturbance associated with nearby metal object such as service or field boundary
- Strong magnetic debris - possible disturbed or made ground
- Scattered magnetic debris
- Magnetic spike - probable ferrous object
- Linear anomaly - possible drainage channel related to a pond

Job No.	7386	Survey Date	OCT 14
Client			
AVON ARCHAEOLOGY			
Project Title			
GEOPHYSICAL SURVEY - SHARPNESS, GLOUCESTERSHIRE			
Subject			
ABSTRACTION AND INTERPRETATION OF GRADIOMETER ANOMALIES - NORTH WEST			

**STRATASCAN**  
GEOPHYSICS FOR ARCHAEOLOGY AND ENGINEERING

VINEYARD HOUSE  
UPTON UPON SEVERN  
WR8 0SA

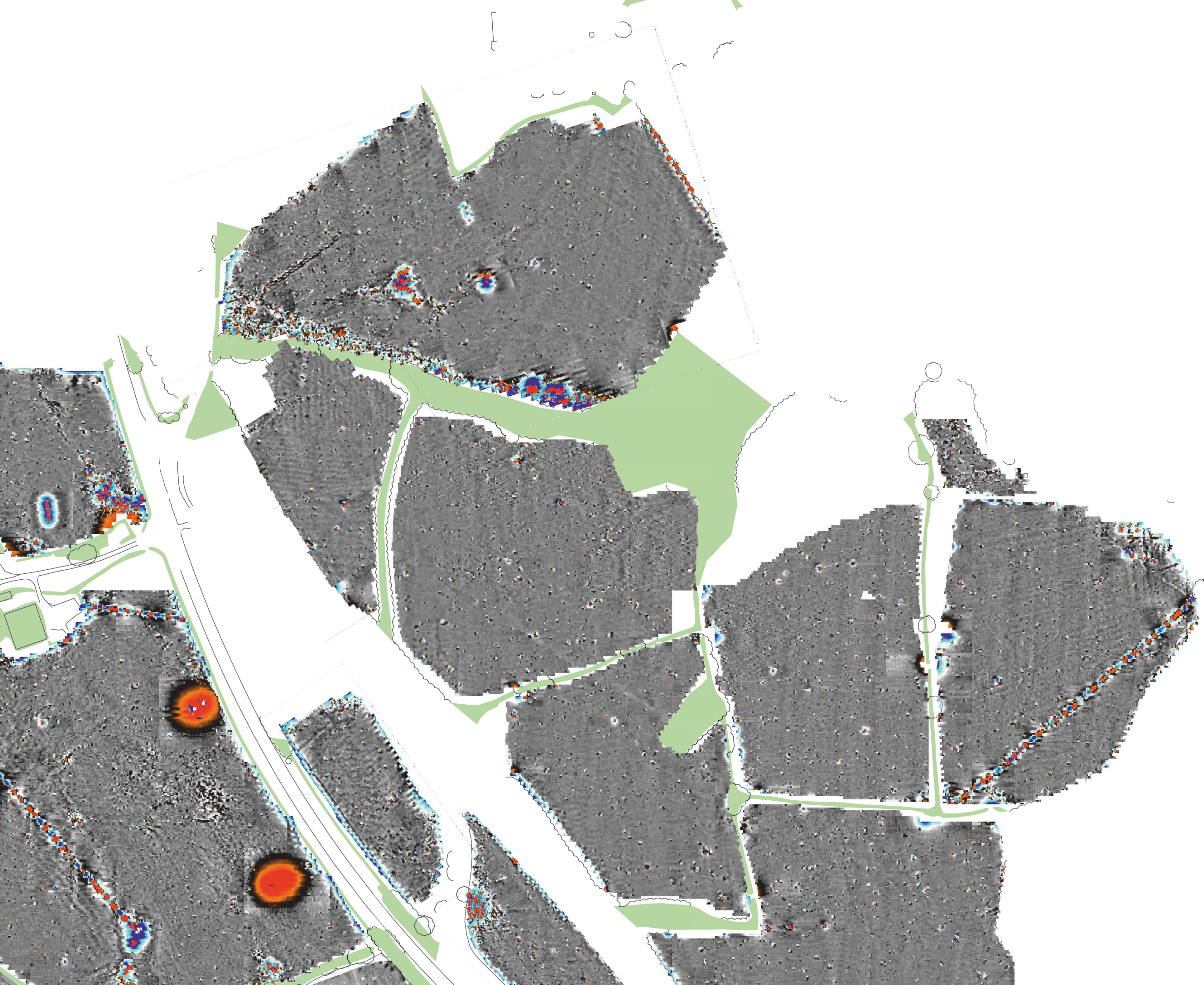
T: 01684 592266  
E: info@stratascan.co.uk  
www.stratascan.co.uk

**GPR**  
ASSOCIATION

**SUMO**  
GROUP MEMBER

Scale 1:1250 0m 10 20 30 40 50 60 70 80m		
Plot A1	Checked by DGE	Issue No. 01
Date NOV 14	Drawn by RD	Figure No. 07





Amendments		
Issue No.	Date	Description
-	-	-
-	-	-
© Stratascan Ltd - 2014		

Plotting parameters

Maximum +100nT (red)  
Minimum -100nT (blue)

+100nT

+25nT

+3nT

-3nT

-25nT

-100nT

Job No.	7386	Survey Date	OCT 14
Client			
AVON ARCHAEOLOGY			
Project Title			
GEOPHYSICAL SURVEY - SHARPNESS, GLOUCESTERSHIRE			
Subject			
COLOUR PLOT OF GRADIOMETER DATA SHOWING EXTREME VALUES - NORTH EAST			

GEOPHYSICS FOR ARCHAEOLOGY AND ENGINEERING

VINEYARD HOUSE  
UPTON UPON SEVERN  
WR8 0SA

T: 01684 592266  
E: info@stratascan.co.uk  
www.stratascan.co.uk

SUMO GROUP MEMBER

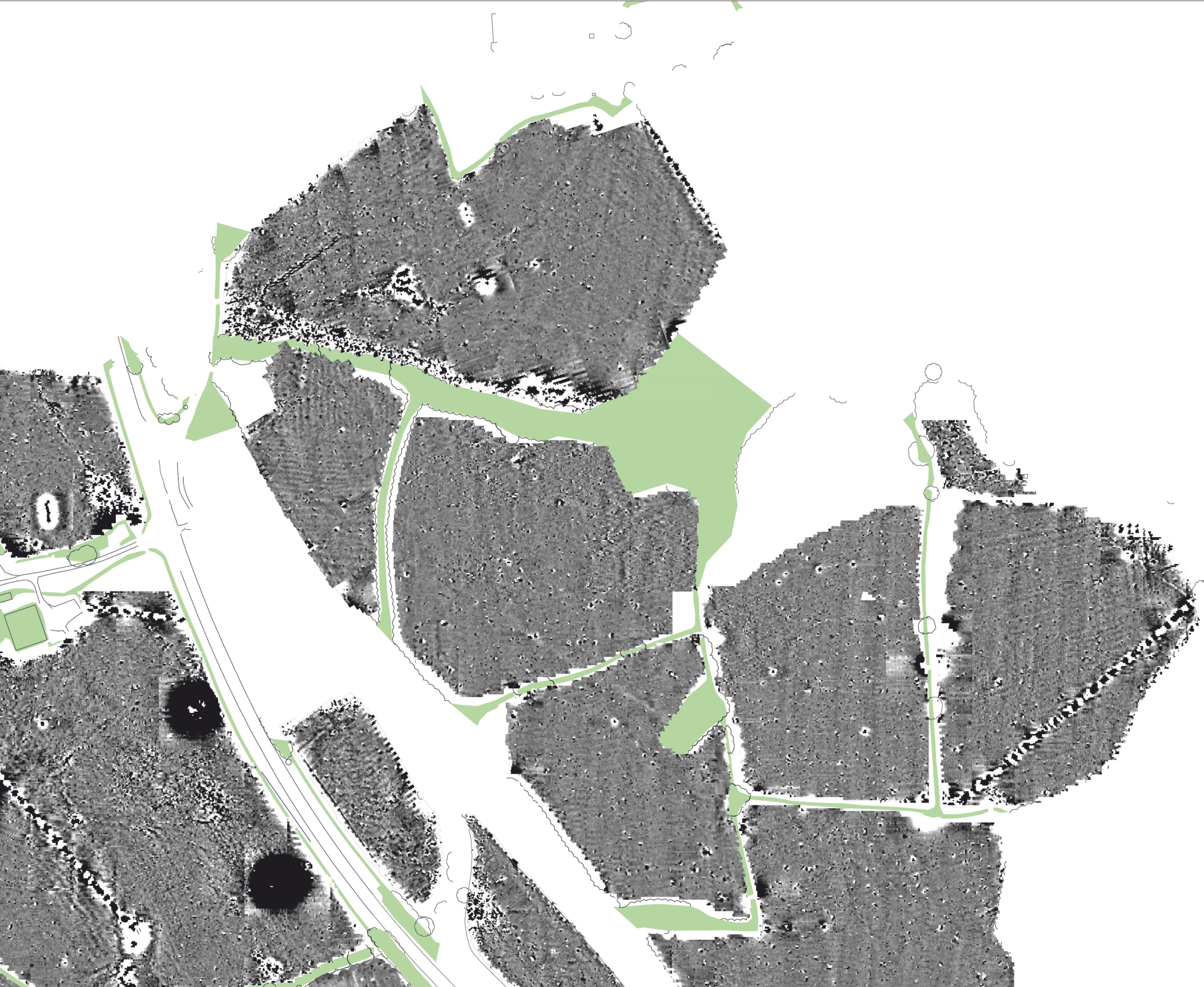
IMS ISO 9001 certified

UKAS ISO 9001 certified

Scale	0m	10	20	30	40	50	60	70	80m
1:1250									

Plot	Checked by	Issue No.
A1	DGE	01
Date	Drawn by	Figure No.
NOV 14	RD	08





Amendments

Issue No.	Date	Description
-	-	-
-	-	-

© Stratascan Ltd - 2014

Plotting parameters

Maximum +2nT (black)  
Minimum -2nT (white)  
Zero Mean

Job No.

7386

Survey Date

OCT 14

Client

AVON ARCHAEOLOGY

Project Title

GEOPHYSICAL SURVEY -  
SHARPNESS,  
GLOUCESTERSHIRE

Subject

PLOT OF MINIMALLY  
PROCESSED GRADIOMETER  
DATA - NORTH EAST

GEOPHYSICS FOR ARCHAEOLOGY  
AND ENGINEERING

VINEYARD HOUSE  
UPTON UPON SEVERN  
WR8 0SA

T: 01684 592266  
E: info@stratascan.co.uk  
www.stratascan.co.uk

SUMO GROUP  
MEMBER

Scale

0m 10 20 30 40 50 60 70 80m

1:1250

Plot

A1

Checked by

DGE

Issue No.

01

Date

NOV 14

Drawn by

RD

Figure No.

09





Amendments

Issue No.	Date	Description
-	-	-
-	-	-

© Stratascan Ltd - 2014

KEY

PROBABLE ARCHAEOLOGY

Positive anomaly / weak positive anomaly - probable cut feature of archaeological origin

Negative anomaly / weak negative anomaly - probable bank or earthwork of archaeological origin

Scattered magnetic debris related to former field boundary visible on mapping 1881-1972

Widely spaced curving parallel linear anomalies - probably related to ridge-and-furrow

POSSIBLE ARCHAEOLOGY

Positive anomaly / weak positive anomaly - possible cut feature of archaeological origin

Negative anomaly / weak negative anomaly - possible (geological or pedological) or ridge and furrow

Area of amorphous magnetic variation - possible natural

Linear anomaly - possibly related to a former field boundary, not visible on available historic mapping

OTHER ANOMALIES

Positive anomalies of unknown origin

Closely spaced parallel linear anomalies - probably related to agricultural activity such as ploughing

Area of strong magnetic debris related to former pond visible on mapping from 1888 to 1995

Linear anomaly - probably related to pipe, cable or other modern service

Magnetic disturbance associated with nearby metal object such as service or field boundary

Strong magnetic debris - possible disturbed or made ground

Scattered magnetic debris

Magnetic spike - probable ferrous object

Linear anomaly - possible drainage channel related to a pond

Job No. 7386

Survey Date OCT 14

Client

AVON ARCHAEOLOGY

Project Title

GEOPHYSICAL SURVEY - SHARPNESS, GLOUCESTERSHIRE

Subject

ABSTRACTION AND INTERPRETATION OF GRADIOMETER ANOMALIES - NORTH EAST

STRATASCAN

GEOPHYSICS FOR ARCHAEOLOGY AND ENGINEERING

VINEYARD HOUSE  
UPTON UPON SEVERN  
WR8 0SA

T: 01684 592266  
E: info@stratascan.co.uk  
www.stratascan.co.uk

BRITISH GEOGRAPHICAL SURVEY ASSOCIATION

GPR

ASSOCIATION

SURVEY SUMO

SURVEY GROUP MEMBER

IMS

ISO 9001 certified

IMS

ISO 14001 certified

Scale

0m 10 20 30 40 50 60 70 80m

1:1250

Plot A1

Checked by DGE

Issue No. 01

Date NOV 14

Drawn by RD

Figure No. 10





Amendments		
Issue No.	Date	Description
-	-	-
-	-	-

© Stratascan Ltd - 2014

Plotting parameters

Maximum +100nT (red)  
Minimum -100nT (blue)

+100nT

+25nT

+3nT

-3nT

-25nT

-100nT

Job No.	7386	Survey Date	OCT 14
Client			
AVON ARCHAEOLOGY			
Project Title			
GEOPHYSICAL SURVEY - SHARPNESS, GLOUCESTERSHIRE			
Subject			
COLOUR PLOT OF GRADIOMETER DATA SHOWING EXTREME VALUES - SOUTH WEST			
GEOPHYSICS FOR ARCHAEOLOGY AND ENGINEERING			
VINEYARD HOUSE UPTON UPON SEVERN WR8 0SA		T: 01684 592266 E: info@stratascan.co.uk www.stratascan.co.uk	
SUMO GROUP MEMBER			

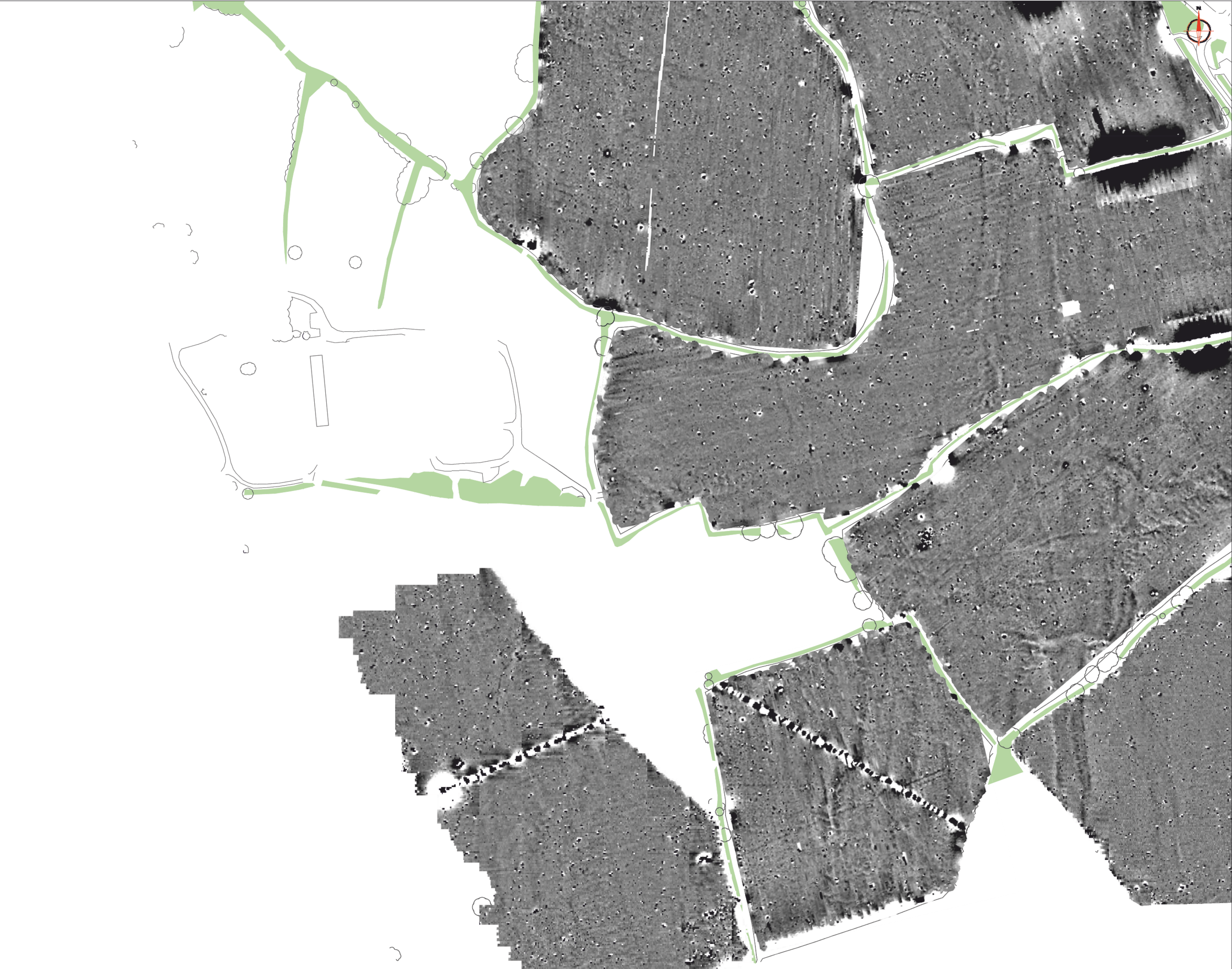
Scale

1:1250

0m 10 20 30 40 50 60 70 80m

Plot	Checked by	Issue No.
A1	DGE	01
Date	Drawn by	Figure No.
NOV 14	RD	11





Amendments		
Issue No.	Date	Description
-	-	-
-	-	-

© Stratascan Ltd - 2014

Plotting parameters

Maximum +2nT (black)  
Minimum -2nT (white)  
Zero  
Mean

+2nT

-2nT

Job No.

7386

Survey Date

OCT 14

Client

AVON ARCHAEOLOGY

Project Title

GEOPHYSICAL SURVEY -  
SHARPNESS,  
GLOUCESTERSHIRE

Subject

PLOT OF MINIMALLY  
PROCESSED GRADIOMETER  
DATA - SOUTH WEST

**STRATASCAN**™  
GEOPHYSICS FOR ARCHAEOLOGY  
AND ENGINEERING

VINEYARD HOUSE  
UPTON UPON SEVERN  
WR8 0SA

T: 01684 592266  
E: info@stratascan.co.uk  
www.stratascan.co.uk

**GPR ASSOCIATION**

**SUMO**  
SUMO GROUP  
MEMBER

Scale

0m 10 20 30 40 50 60 70 80m

1:1250

Plot

A1

Checked by

DGE

Issue No.

01

Date

NOV 14

Drawn by

RD

Figure No.

12





Amendments		
Issue No.	Date	Description
-	-	-
© Stratascan Ltd - 2014		

### KEY

**PROBABLE ARCHAEOLOGY**

- Positive anomaly / weak positive anomaly - probable cut feature of archaeological origin
- Negative anomaly / weak negative anomaly - probable bank or earthwork of archaeological origin
- Scattered magnetic debris related to former field boundary visible on mapping 1881-1972
- Widely spaced curving parallel linear anomalies - probably related to ridge-and-furrow

**POSSIBLE ARCHAEOLOGY**

- Positive anomaly / weak positive anomaly - possible cut feature of archaeological origin
- Negative anomaly / weak negative anomaly - possible bank or earthwork of archaeological origin
- Area of amorphous magnetic variation - possible natural (geological or pedological) or ridge and furrow
- Linear anomaly - possibly related to a former field boundary, not visible on available historic mapping

**OTHER ANOMALIES**

- Positive anomalies of unknown origin
- Closely spaced parallel linear anomalies - probably related to agricultural activity such as ploughing
- Area of strong magnetic debris related to former pond visible on mapping from 1888 to 1995
- Linear anomaly - probably related to pipe, cable or other modern service
- Magnetic disturbance associated with nearby metal object such as service or field boundary
- Strong magnetic debris - possible disturbed or made ground
- Scattered magnetic debris
- Magnetic spike - probable ferrous object
- Linear anomaly - possible drainage channel related to a pond

Job No.	7386	Survey Date	OCT 14
Client			
AVON ARCHAEOLOGY			
Project Title			
GEOPHYSICAL SURVEY - SHARPNESS, GLOUCESTERSHIRE			
Subject			
ABSTRACTION AND INTERPRETATION OF GRADIOMETER ANOMALIES - SOUTH WEST			

STRATASCAN™  
GEOPHYSICS FOR ARCHAEOLOGY AND ENGINEERING

VINEYARD HOUSE  
UPTON UPON SEVERN  
WR8 0SA

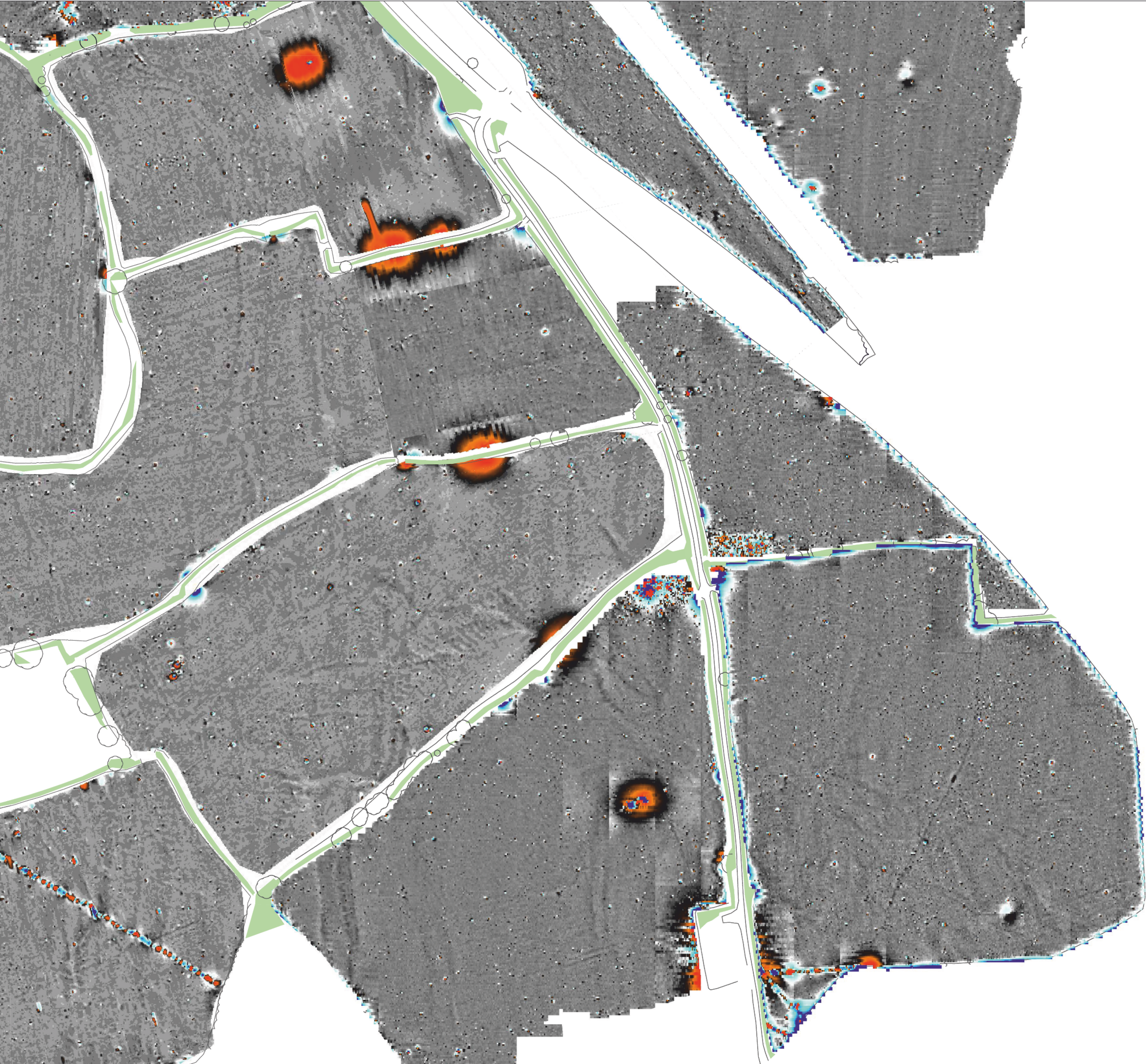
T: 01684 592266  
E: info@stratascan.co.uk  
www.stratascan.co.uk

Scale 1:1250

0m 10 20 30 40 50 60 70 80m

Plot	A1	Checked by	DGE	Issue No.	01
Date	NOV 14	Drawn by	RD	Figure No.	13





Amendments

Issue No.	Date	Description
-	-	-
-	-	-

© Stratascan Ltd - 2014

Plotting parameters

Maximum +100nT (red)  
Minimum -100nT (blue)

+100nT  
+25nT  
+3nT  
-3nT  
-25nT  
-100nT

Job No.  
7386

Survey Date  
OCT 14

Client  
AVON ARCHAEOLOGY

Project Title  
GEOPHYSICAL SURVEY -  
SHARPNESS,  
GLOUCESTERSHIRE

Subject  
COLOUR PLOT OF  
GRADIOMETER DATA  
SHOWING EXTREME VALUES -  
SOUTH EAST

GEOPHYSICS FOR ARCHAEOLOGY  
AND ENGINEERING

VINEYARD HOUSE  
UPTON UPON SEVERN  
WR8 0SA

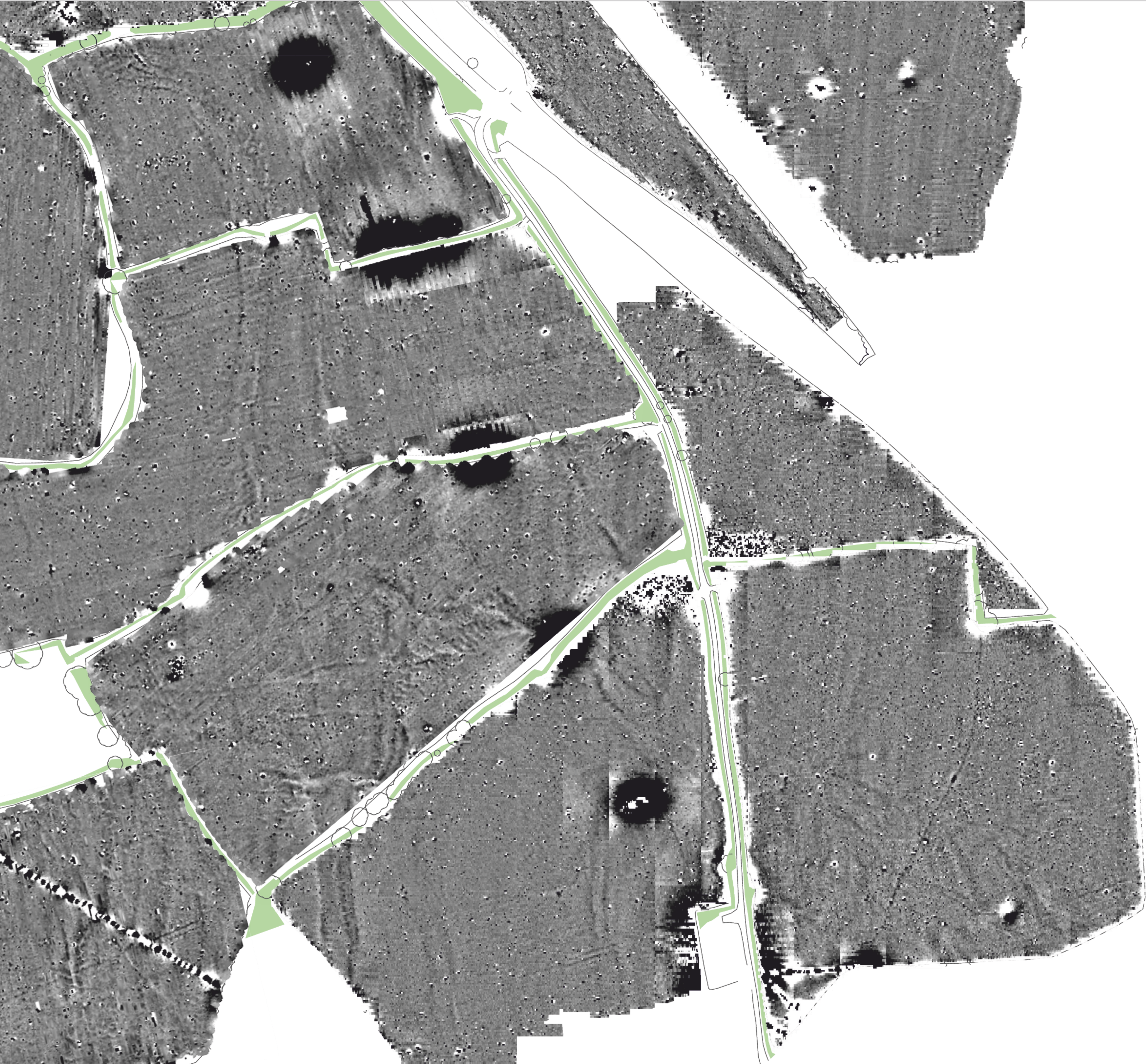
T: 01684 592266  
E: info@stratascan.co.uk  
www.stratascan.co.uk

SUMO  
GROUP  
MEMBER

Scale  
1:1250  
0m 10 20 30 40 50 60 70 80m

Plot A1	Checked by DGE	Issue No. 01
Date NOV 14	Drawn by RD	Figure No. 14





Amendments

Issue No.	Date	Description
-	-	-
-	-	-

© Stratascan Ltd - 2014

Plotting parameters

Maximum +2nT (black)  
Minimum -2nT (white)  
Zero  
Mean

-2nT +2nT

+2nT

-2nT

Job No.

7386

Survey Date

OCT 14

Client

AVON ARCHAEOLOGY

Project Title

GEOPHYSICAL SURVEY -  
SHARPNESS,  
GLOUCESTERSHIRE

Subject

PLOT OF MINIMALLY  
PROCESSED GRADIOMETER  
DATA - SOUTH EAST

**STRATASCAN**<sup>TM</sup>  
GEOPHYSICS FOR ARCHAEOLOGY  
AND ENGINEERING  
VINEYARD HOUSE  
UPTON UPON SEVERN  
WR8 0SA  
T: 01684 592266  
E: info@stratascan.co.uk  
www.stratascan.co.uk

**GPR**  
ASSOCIATION  
  
**SUMO**  
GROUP  
MEMBER  
  
IMS  
ISO 9001  
certified  
  
UKAS  
ISO 9001  
certified

Scale

1:1250

Plot

A1

Checked by

DGE

Issue No.

01

Date

NOV 14

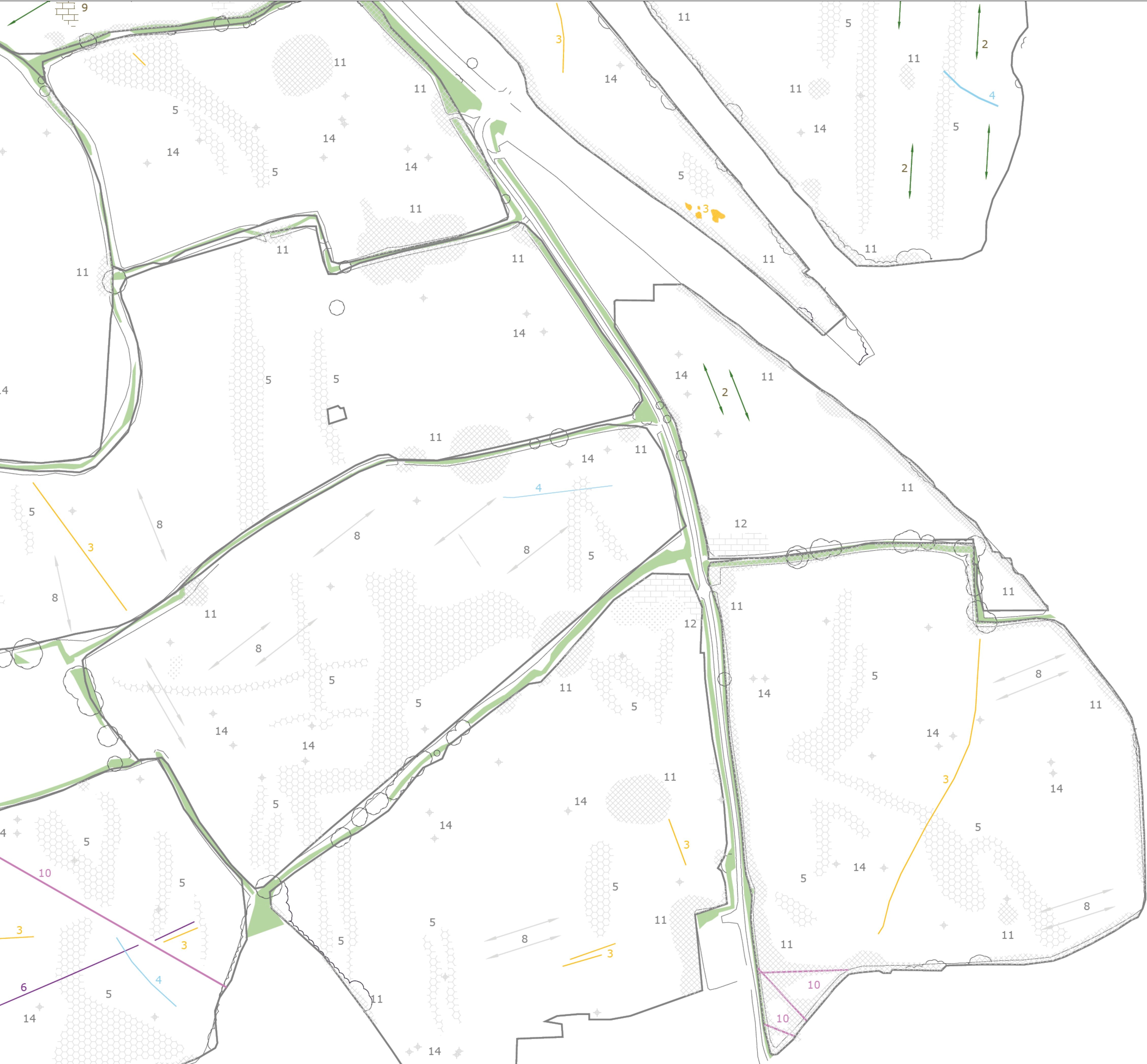
Drawn by

RD

Figure No.

15





Amendments

Issue No.	Date	Description
-	-	-
-	-	-

© Stratascan Ltd - 2014

KEY

PROBABLE ARCHAEOLOGY

Positive anomaly / weak positive anomaly - probable cut feature of archaeological origin

Negative anomaly / weak negative anomaly - probable bank or earthwork of archaeological origin

Scattered magnetic debris related to former field boundary visible on mapping 1881-1972

Widely spaced curving parallel linear anomalies - probably related to ridge-and-furrow

POSSIBLE ARCHAEOLOGY

Positive anomaly / weak positive anomaly - possible cut feature of archaeological origin

Negative anomaly / weak negative anomaly - possible bank or earthwork of archaeological origin

Area of amorphous magnetic variation - possible natural (geological or pedological) or ridge and furrow

Linear anomaly - possibly related to a former field boundary, not visible on available historic mapping

OTHER ANOMALIES

Positive anomalies of unknown origin

Closely spaced parallel linear anomalies - probably related to agricultural activity such as ploughing

Area of strong magnetic debris related to former pond visible on mapping from 1888 to 1995

Linear anomaly - probably related to pipe, cable or other modern service

Magnetic disturbance associated with nearby metal object such as service or field boundary

Strong magnetic debris - possible disturbed or made ground

Scattered magnetic debris

Magnetic spike - probable ferrous object

Linear anomaly - possible drainage channel related to a pond

Job No.7386

Survey DateOCT 14

Client

AVON ARCHAEOLOGY

Project Title

GEOPHYSICAL SURVEY - SHARPNESS, GLOUCESTERSHIRE

Subject

ABSTRACTION AND INTERPRETATION OF GRADIOMETER ANOMALIES - SOUTH EAST

STRATASCAN™

GEOPHYSICS FOR ARCHAEOLOGY AND ENGINEERING

VINEYARD HOUSE  
UPTON UPON SEVERN  
WR8 0SA

T: 01684 592266  
E: info@stratascan.co.uk  
www.stratascan.co.uk

GPR ASSOCIATION

SUMO

SUMO GROUP MEMBER

IMS

ISO 9001 certified

UKAS

ISO 9001 certified

Scale

0m1020304050607080m

1:1250

PlotA1

Checked byDGE

Issue No.01

DateNOV 14

Drawn byRD

Figure No.16