

GEOPHYSICAL SURVEY REPORT

# STRATASCAN™



Project name:

**Land off Sandpit Lane, Long Clawson, Leicestershire**

Client:

**Trigpoint Conservation & Planning Ltd.**

**July 2015**

Job ref:

**J8584**

Report author:

**Magdalena Udyrysz MSc ACIfA**

# GEOPHYSICAL SURVEY REPORT

Project name:

**Land off Sandpit Lane, Long Clawson, Leicestershire**

Client:

**Trigpoint Conservation & Planning Ltd.**



Job ref:

**J8584**

Techniques:

**Detailed magnetic survey –  
Gradiometry**

Survey date:

**22th June 2015**

Site centred at:

**SK 723 269**

Post code:

**LE14 4NX**

Field team:

**Robert Knight** BA (Hons), **Daniel Leitch** BA,  
**Gordon McGregor** BSc (Hons)

Project manager:

**Simon Haddrell** BEng(Hons) AMBCS PCIfA

Report written By:

**Magdalena Udyrysz** MSc ACIfA

CAD illustrations by:

**Magdalena Udyrysz** MSc ACIfA

Checked by:

**Peter Barker** C.Eng MICE MCIWEM MCIfA FCInistCES

## TABLE OF CONTENTS

<b>LIST OF FIGURES.....</b>	<b>2</b>
<b>1 SUMMARY OF RESULTS .....</b>	<b>3</b>
<b>2 INTRODUCTION .....</b>	<b>3</b>
2.1 Background synopsis.....	3
2.2 Site location .....	3
2.3 Description of site .....	3
2.4 Geology and soils .....	3
2.5 Site history and archaeological potential .....	3
2.6 Survey objectives .....	4
2.7 Survey methods .....	4
2.8 Processing, presentation and interpretation of results.....	4
2.8.1 Processing .....	4
2.8.2 Presentation of results and interpretation.....	4
<b>3 RESULTS.....</b>	<b>5</b>
3.1 Probable Archaeology.....	5
3.2 Possible Archaeology .....	5
3.3 Medieval/Post-Medieval Agriculture.....	5
3.4 Other Anomalies .....	5
<b>4 DATA APPRAISAL &amp; CONFIDENCE ASSESSMENT .....</b>	<b>6</b>
<b>5 CONCLUSION.....</b>	<b>6</b>
<b>6 REFERENCES .....</b>	<b>7</b>
<b>APPENDIX A – METHODOLOGY &amp; SURVEY EQUIPMENT .....</b>	<b>8</b>
<b>APPENDIX B – BASIC PRINCIPLES OF MAGNETIC SURVEY .....</b>	<b>9</b>
<b>APPENDIX C – GLOSSARY OF MAGNETIC ANOMALIES.....</b>	<b>10</b>

**Geophysical Survey Report**

Project Name: Land off Sandpit Lane, Long Clawson, Leicestershire  
Client: Trigpoint Conservation & Planning Ltd.

Job ref: J8584  
Date: July 2015

## **LIST OF FIGURES**

Figure 01	1:25000	Location plan of survey area
Figure 02	1:1000	Location of survey grid and referencing
Figure 03	1:1000	Colour plot of gradiometer data showing extreme values
Figure 04	1:1000	Plot of minimally processed gradiometer data
Figure 05	1:1000	Abstraction and interpretation of gradiometer data

## 1 SUMMARY OF RESULTS

A detailed gradiometry survey was conducted over approximately 2.65 hectares of grassland. No features of probable or possible archaeological origin have been identified. A linear anomaly probably related to a former field boundary not present on available mapping was found. The rest of the features identified are modern in origin and include evidence of nearby ferrous objects.

## 2 INTRODUCTION

### 2.1 *Background synopsis*

Stratascan were commissioned to undertake a geophysical survey of an area outlined for development. This survey forms part of an archaeological investigation being undertaken by Trigpoint Conservation & Planning Ltd.

### 2.2 *Site location*

The site is located to the west of Sandpit Lane, Long Clawson, Leicestershire. The site is centred at OS Ref. SK 723 269.

### 2.3 *Description of site*

The survey area is approximately 2.65 hectares of flat grassland. The site is unobstructed.

### 2.4 *Geology and soils*

The underlying geology of the site comprises mudstone of Charmouth Mudstone Formation (British Geological Survey website). No drift geology is recorded (British Geological Survey website).

The overlying soils are known as Denchworth, which are slowly permeable seasonally waterlogged clayey soils with similar fine loamy over clayey souls (Soil Survey of England and Wales, Sheet 3 Midland and Western England).

### 2.5 *Site history and archaeological potential*

A search of Past Scape (Historic England, 2015) within a 1 km radius of the site has identified a small number of medieval remains in close proximity to the site. A medieval moat surviving largely as an earthwork (monument no. 321461) has been identified, and a fish pond is located immediately to the north of the site. Circular marks are potentially related to the medieval activity, though their origin is unknown (monument numbers 964643 and 964644). Given the number of medieval remains near to the site, it can be assumed that the site has moderate potential for medieval features and a low potential for remains from all of other periods.

## 2.6 **Survey objectives**

The objective of the survey was to locate any features of possible archaeological origin in order that they may be assessed prior to development.

## 2.7 **Survey methods**

This report and all fieldwork have been conducted in accordance with both the English Heritage guidelines outlined in the document: *Geophysical Survey in Archaeological Field Evaluation, 2008* and with the Chartered Institute for Archaeologists document *Standard and Guidance for Archaeological Geophysical Survey*.

Detailed magnetic survey (gradiometry) was used as an efficient and effective method of locating archaeological anomalies. More information regarding this technique is included in Appendix A.

## 2.8 **Processing, presentation and interpretation of results**

### 2.8.1 *Processing*

Processing is performed using specialist software. This can emphasise various aspects contained within the data but which are often not easily seen in the raw data. Basic processing of the magnetic data involves 'flattening' the background levels with respect to adjacent traverses and adjacent grids. Once the basic processing has flattened the background it is then possible to carry out further processing which may include low pass filtering to reduce 'noise' in the data and hence emphasise the archaeological or man-made anomalies.

The following schedule shows the basic processing carried out on all minimally processed gradiometer data used in this report:

1. *Destripe* (Removes striping effects caused by zero-point discrepancies between different sensors and walking directions)
2. *Destagger* (Removes zigzag effects caused by inconsistent walking speeds on sloping, uneven or overgrown terrain)

### 2.8.2 *Presentation of results and interpretation*

The presentation of the data for each site involves a print-out of the minimally processed data both as a greyscale plot and a colour plot showing extreme magnetic values. Magnetic anomalies have been identified and plotted onto the 'Abstraction and Interpretation of Anomalies' drawing for the site.

### 3 RESULTS

The detailed magnetic gradiometer survey conducted at Sandpit Lane has not identified any features of probable or possible archaeological origin.

The following list of numbered anomalies refers to numerical labels on the interpretation plots.

#### 3.1 *Probable Archaeology*

No probable archaeology has been identified within the survey area.

#### 3.2 *Possible Archaeology*

No possible archaeology has been identified within the survey area.

#### 3.3 *Medieval/Post-Medieval Agriculture*

- 1 A linear anomaly in the north of the site. This is likely to be related to post-medieval field boundary that is not visible on available historic mapping.

#### 3.4 *Other Anomalies*

- 2 Areas of magnetic disturbance are the result of substantial nearby ferrous metal objects such as fences and underground services. These effects can mask weaker archaeological anomalies, but on this site have not affected a significant proportion of the area.
- 3 An area of scattered magnetic debris in the west of the site. This is likely to be modern in origin.
- 4 A number of magnetic 'spikes' (strong focussed values with associated antipolar response) indicate ferrous metal objects. These are likely to be modern rubbish.

## 4 DATA APPRAISAL & CONFIDENCE ASSESSMENT

Mudstone geologies can give variable results for gradiometer survey. The detection of a former field boundary suggests that the survey has been somewhat effective. However, the limited amount of previous archaeological work in the area and lack of archaeological anomalies seen in the data means the effectiveness of the survey cannot be commented on with absolute certainty.

## 5 CONCLUSION

The survey at Sandpit Lane has not identified any features of probable or possible archaeological origin, however a possible field boundary was found. Other features include areas of magnetic disturbance caused by nearby ferrous objects and magnetic spikes that are likely to be modern rubbish.



## 6 REFERENCES

British Geological Survey South Sheet, 1977. *Geological Survey Ten Mile Map, South Sheet First Edition (Quaternary)*. Institute of Geological Sciences.

British Geological Survey, 2001. *Geological Survey Ten Mile Map, South Sheet, Fourth Edition (Solid)*. British Geological Society.

British Geological Survey, n.d., *website*:  
(<http://www.bgs.ac.uk/opengeoscience/home.html?Accordion1=1#maps>) Geology of Britain viewer.

Chartered Institute For Archaeologists. *Standard and Guidance for Archaeological Geophysical Survey*.  
<http://www.archaeologists.net/sites/default/files/nodefiles/Geophysics2010.pdf>

English Heritage, 2008. *Geophysical Survey in Archaeological Field Evaluation*.

Soil Survey of England and Wales, 1983. *Soils of England and Wales, Sheet 3 Midland and Western England*.

## APPENDIX A – METHODOLOGY & SURVEY EQUIPMENT

### ***Grid locations***

The location of the survey grids has been plotted together with the referencing information. Grids were set out using a Leica 705auto Total Station and referenced to suitable topographic features around the perimeter of the site or a Leica Smart Rover RTK GPS.

An RTK GPS (Real-time Kinematic Global Positioning System) can locate a point on the ground to a far greater accuracy than a standard GPS unit. A standard GPS suffers from errors created by satellite orbit errors, clock errors and atmospheric interference, resulting in an accuracy of 5m-10m. An RTK system uses a single base station receiver and a number of mobile units. The base station re-broadcasts the phase of the carrier it measured, and the mobile units compare their own phase measurements with those they received from the base station. A SmartNet RTK GPS uses Ordnance Survey's network of over 100 fixed base stations to give an accuracy of around 0.01m.

### ***Survey equipment and gradiometer configuration***

Although the changes in the magnetic field resulting from differing features in the soil are usually weak, changes as small as 0.2 nanoTeslas (nT) in an overall field strength of 48,000nT, can be accurately detected using an appropriate instrument.

The mapping of the anomaly in a systematic manner will allow an estimate of the type of material present beneath the surface. Strong magnetic anomalies will be generated by buried iron-based objects or by kilns or hearths. More subtle anomalies such as pits and ditches can be seen if they contain more humic material which is normally rich in magnetic iron oxides when compared with the subsoil.

To illustrate this point, the cutting and subsequent silting or backfilling of a ditch may result in a larger volume of weakly magnetic material being accumulated in the trench compared to the undisturbed subsoil. A weak magnetic anomaly should therefore appear in plan along the line of the ditch.

The magnetic survey was carried out using a dual sensor Grad601-2 Magnetic Gradiometer manufactured by Bartington Instruments Ltd. The instrument consists of two fluxgates very accurately aligned to nullify the effects of the Earth's magnetic field. Readings relate to the difference in localised magnetic anomalies compared with the general magnetic background. The Grad601-2 consists of two high stability fluxgate gradiometers suspended on a single frame. Each gradiometer has a 1m separation between the sensing elements so enhancing the response to weak anomalies.

### ***Sampling interval***

Readings were taken at 0.25m centres along traverses 1m apart. This equates to 3600 sampling points in a full 30m x 30m grid.

### ***Depth of scan and resolution***

The Grad 601-2 has a typical depth of penetration of 0.5m to 1.0m, though strongly magnetic objects may be visible at greater depths. The collection of data at 0.25m centres provides an optimum methodology for the task balancing cost and time with resolution.

### ***Data capture***

The readings are logged consecutively into the data logger which in turn is daily down-loaded into a portable computer whilst on site. At the end of each site survey, data is transferred to the office for processing and presentation.

## APPENDIX B – BASIC PRINCIPLES OF MAGNETIC SURVEY

Detailed magnetic survey can be used to effectively define areas of past human activity by mapping spatial variation and contrast in the magnetic properties of soil, subsoil and bedrock.

Weakly magnetic iron minerals are always present within the soil and areas of enhancement relate to increases in *magnetic susceptibility* and permanently magnetised *thermoremanent* material.

Magnetic susceptibility relates to the induced magnetism of a material when in the presence of a magnetic field. This magnetism can be considered as effectively permanent as it exists within the Earth's magnetic field. Magnetic susceptibility can become enhanced due to burning and complex biological or fermentation processes.

Thermoremanence is a permanent magnetism acquired by iron minerals that, after heating to a specific temperature known as the Curie Point, are effectively demagnetised followed by re-magnetisation by the Earth's magnetic field on cooling. Thermoremanent archaeological features can include hearths and kilns and material such as brick and tile may be magnetised through the same process.

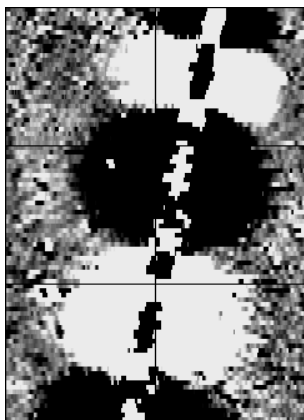
Silting and deliberate infilling of ditches and pits with magnetically enhanced soil creates a relative contrast against the much lower levels of magnetism within the subsoil into which the feature is cut. Systematic mapping of magnetic anomalies will produce linear and discrete areas of enhancement allowing assessment and characterisation of subsurface features. Material such as subsoil and non-magnetic bedrock used to create former earthworks and walls may be mapped as areas of lower enhancement compared to surrounding soils.

Magnetic survey is carried out using a fluxgate gradiometer which is a passive instrument consisting of two sensors mounted vertically 1m apart. The instrument is carried about 30cm above the ground surface and the top sensor measures the Earth's magnetic field whilst the lower sensor measures the same field but is also more affected by any localised buried field. The difference between the two sensors will relate to the strength of a magnetic field created by a buried feature, if no field is present the difference will be close to zero as the magnetic field measured by both sensors will be the same.

Factors affecting the magnetic survey may include soil type, local geology, previous human activity, disturbance from modern services etc.

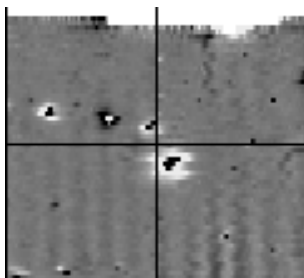
## APPENDIX C – GLOSSARY OF MAGNETIC ANOMALIES

### Bipolar



A bipolar anomaly is one that is composed of both a positive response and a negative response. It can be made up of any number of positive responses and negative responses. For example a pipeline consisting of alternating positive and negative anomalies is said to be bipolar. See also dipolar which has only one area of each polarity. The interpretation of the anomaly will depend on the magnitude of the magnetic field strength. A weak response may be caused by a clay field drain while a strong response will probably be caused by a metallic service.

### Dipolar

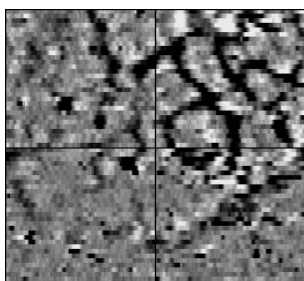


This consists of a single positive anomaly with an associated negative response. There should be no separation between the two polarities of response. These responses will be created by a single feature. The interpretation of the anomaly will depend on the magnitude of the magnetic measurements. A very strong anomaly is likely to be caused by a ferrous object.

### Positive anomaly with associated negative response

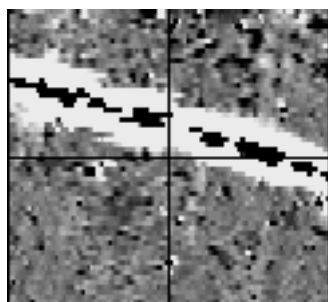
See bipolar and dipolar.

### Positive linear



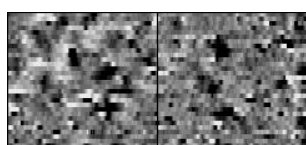
A linear response which is entirely positive in polarity. These are usually related to in-filled cut features where the fill material is magnetically enhanced compared to the surrounding matrix. They can be caused by ditches of an archaeological origin, but also former field boundaries, ploughing activity and some may even have a natural origin.

### Positive linear anomaly with associated negative response



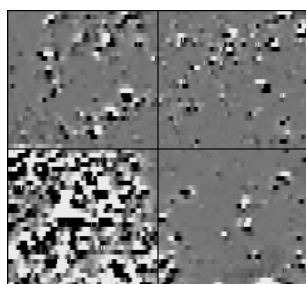
A positive linear anomaly which has a negative anomaly located adjacently. This will be caused by a single feature. In the example shown this is likely to be a single length of wire/cable probably relating to a modern service. Magnetically weaker responses may relate to earthwork style features and field boundaries.

### Positive point/area



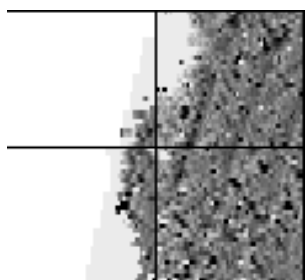
These are generally spatially small responses, perhaps covering just 3 or 4 reading nodes. They are entirely positive in polarity. Similar to positive linear anomalies they are generally caused by in-filled cut features. These include pits of an archaeological origin, possible tree bowls or other naturally occurring depressions in the ground.

### Magnetic debris



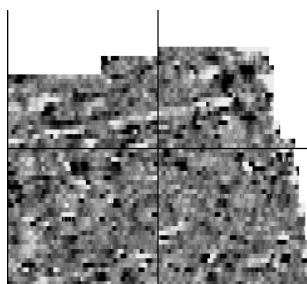
Magnetic debris consists of numerous dipolar responses spread over an area. If the amplitude of response is low ( $\pm 3\text{nT}$ ) then the origin is likely to represent general ground disturbance with no clear cause, it may be related to something as simple as an area of dug or mixed earth. A stronger anomaly ( $\pm 250\text{nT}$ ) is more indicative of a spread of ferrous debris. Moderately strong anomalies may be the result of a spread of thermoremanent material such as bricks or ash.

### Magnetic disturbance



Magnetic disturbance is high amplitude and can be composed of either a bipolar anomaly, or a single polarity response. It is essentially associated with magnetic interference from modern ferrous structures such as fencing, vehicles or buildings, and as a result is commonly found around the perimeter of a site near to boundary fences.

### Negative linear

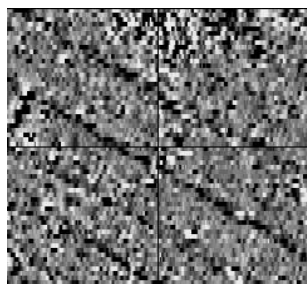


A linear response which is entirely negative in polarity. These are generally caused by earthen banks where material with a lower magnetic magnitude relative to the background top soil is built up. See also ploughing activity.

### Negative point/area

Opposite to positive point anomalies these responses may be caused by raised areas or earthen banks. These could be of an archaeological origin or may have a natural origin.

### Ploughing activity



Ploughing activity can often be visualised by a series of parallel linear anomalies. These can be of either positive polarity or negative polarity depending on site specifics. It can be difficult to distinguish between ancient ploughing and more modern ploughing. Clues such as the separation of each linear, straightness, strength of response and cross cutting relationships can be used to aid this, although none of these can be guaranteed to differentiate between different phases of activity.

### Polarity

Term used to describe the measurement of the magnetic response. An anomaly can have a positive polarity (values above 0nT) and/or a negative polarity (values below 0nT).

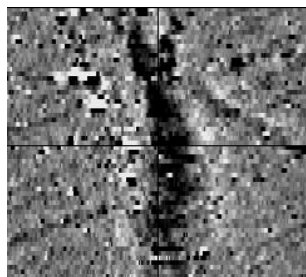
### Strength of response

The amplitude of a magnetic response is an important factor in assigning an interpretation to a particular anomaly. For example a positive anomaly covering a 10m<sup>2</sup> area may have values up to around 3000nT, in which case it is likely to be caused by modern magnetic interference. However, the same size and shaped anomaly but with values up to only 4nT may have a natural origin. Colour plots are used to show the amplitude of response.

### Thermoremanent response

A feature which has been subject to heat may result in it acquiring a magnetic field. This can be anything up to approximately +/-100 nT in value. These features include clay fired drains, brick, bonfires, kilns, hearths and even pottery. If the heat application has occurred in situ (e.g. a kiln) then the response is likely to be bipolar compared to if the heated objects have been disturbed and moved relative to each other, in which case they are more likely to take an irregular form and may display a debris style response (e.g. ash).

### Weak background variations



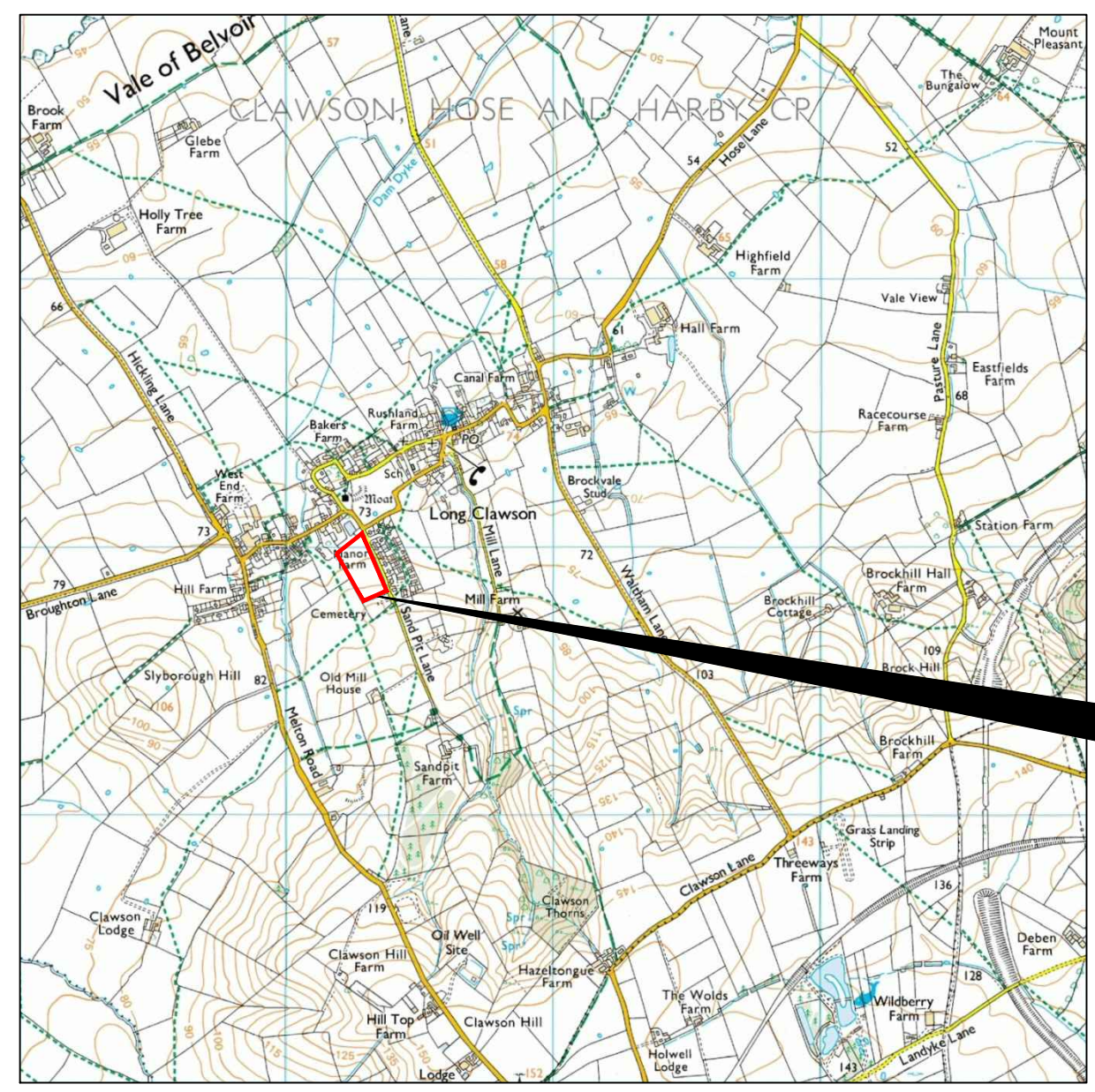
Weakly magnetic wide scale variations within the data can sometimes be seen within sites. These usually have no specific structure but can often appear curvy and sinuous in form. They are likely to be the result of natural features, such as soil creep, dried up (or seasonal) streams. They can also be caused by changes in the underlying geology or soil type which may contain unpredictable distributions of magnetic minerals, and are usually apparent in several locations across a site.



Reproduced from Ordnance Survey's 1:25 000 map of 1998 with the permission of the controller of Her Majesty's Stationery Office. Crown Copyright reserved. Licence No: AL 50125A  
 Licensee:  
 Stratascan Ltd.  
 Vineyard House  
 Upper Hook Road  
 Upton Upon Severn  
 WR8 0SA  
 OS 100km square = SK



29  
28  
27  
26  
25



71 72 73 74 75

**Amendments**

Issue No.	Date	Description
-	-	-
-	-	-

© Stratascan Ltd - 2015



Site centred on NGR SK 723 269

Client  
**TRIGPOINT CONSERVATION AND PLANNING LTD**

Project Title Job No. 8584  
**GEOPHYSICAL SURVEY - LAND OFF SANDPIT LANE, LONG CLAWSON, LEICESTERSHIRE**

Subject  
**LOCATION PLAN OF SURVEY AREA**

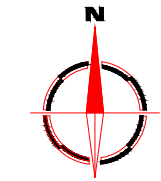
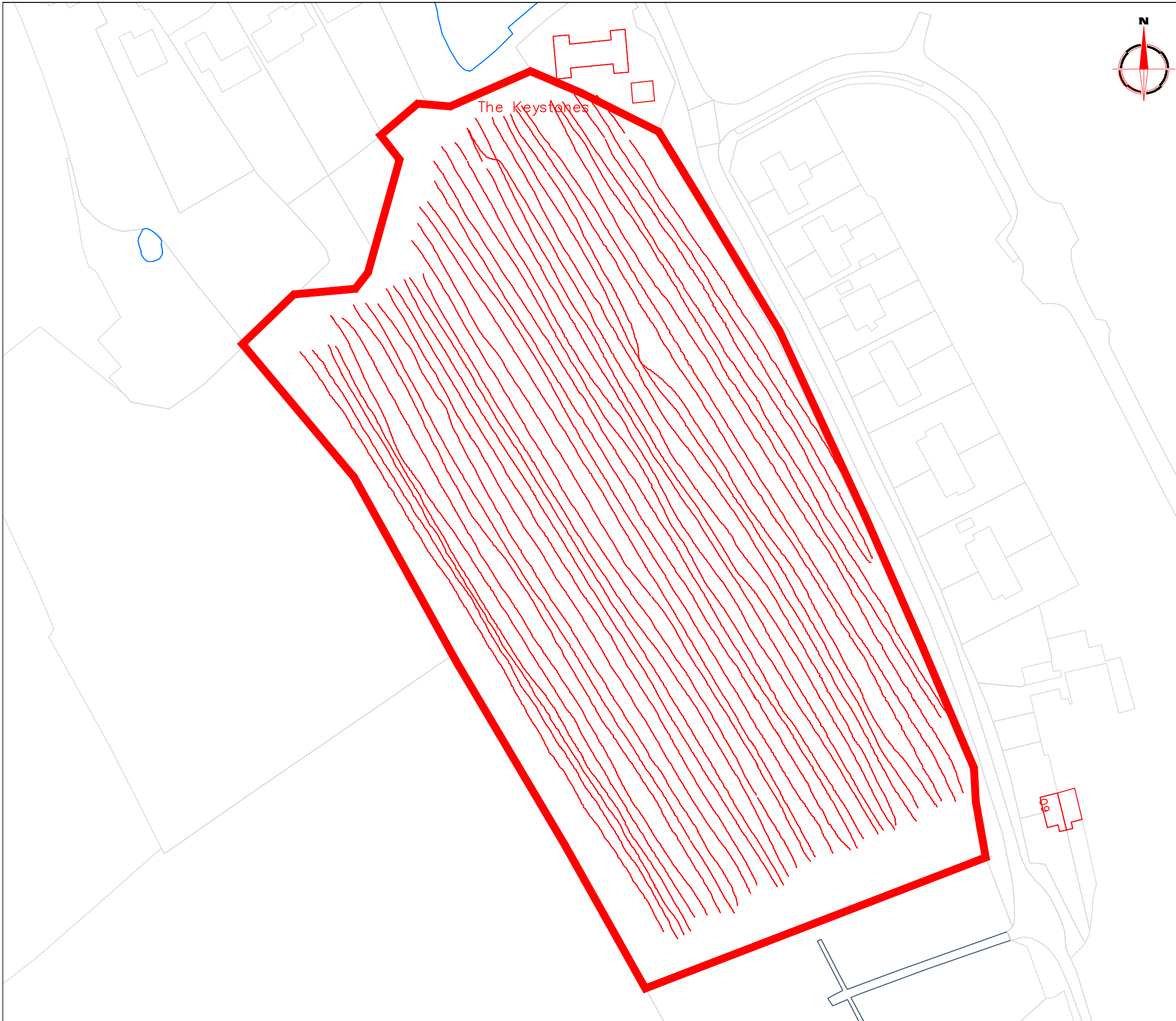
**STRATASCAN**  
 GEOPHYSICS FOR ARCHAEOLOGY AND ENGINEERING  
 VINEYARD HOUSE T: 01684 592266  
 UPTON UPON SEVERN E: info@stratascan.co.uk  
 WR8 0SA www.stratascan.co.uk

**GPR ASSOCIATION**  
**SUMO** SUMO GROUP MEMBER  
 ISO 9001 certified ISO 14001 certified

Scale 1:25000  
 0m 500m 1000m

Plot <b>A3</b>	Checked by <b>PPB</b>	Issue No. <b>01</b>
Survey date <b>JUN 15</b>	Drawn by <b>MU</b>	Figure No. <b>01</b>



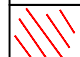


**Amendments**

Issue No.	Date	Description
-	-	-
-	-	-

© Stratascan Ltd - 2015

**KEY**

	Magnetometry cart traverses
---	-----------------------------

Client  
**TRIGPOINT CONSERVATION AND PLANNING LTD**

Project Title Job No. 8584  
**GEOPHYSICAL SURVEY - LAND OFF SANDPIT LANE, LONG CLAWSON, LEICESTERSHIRE**

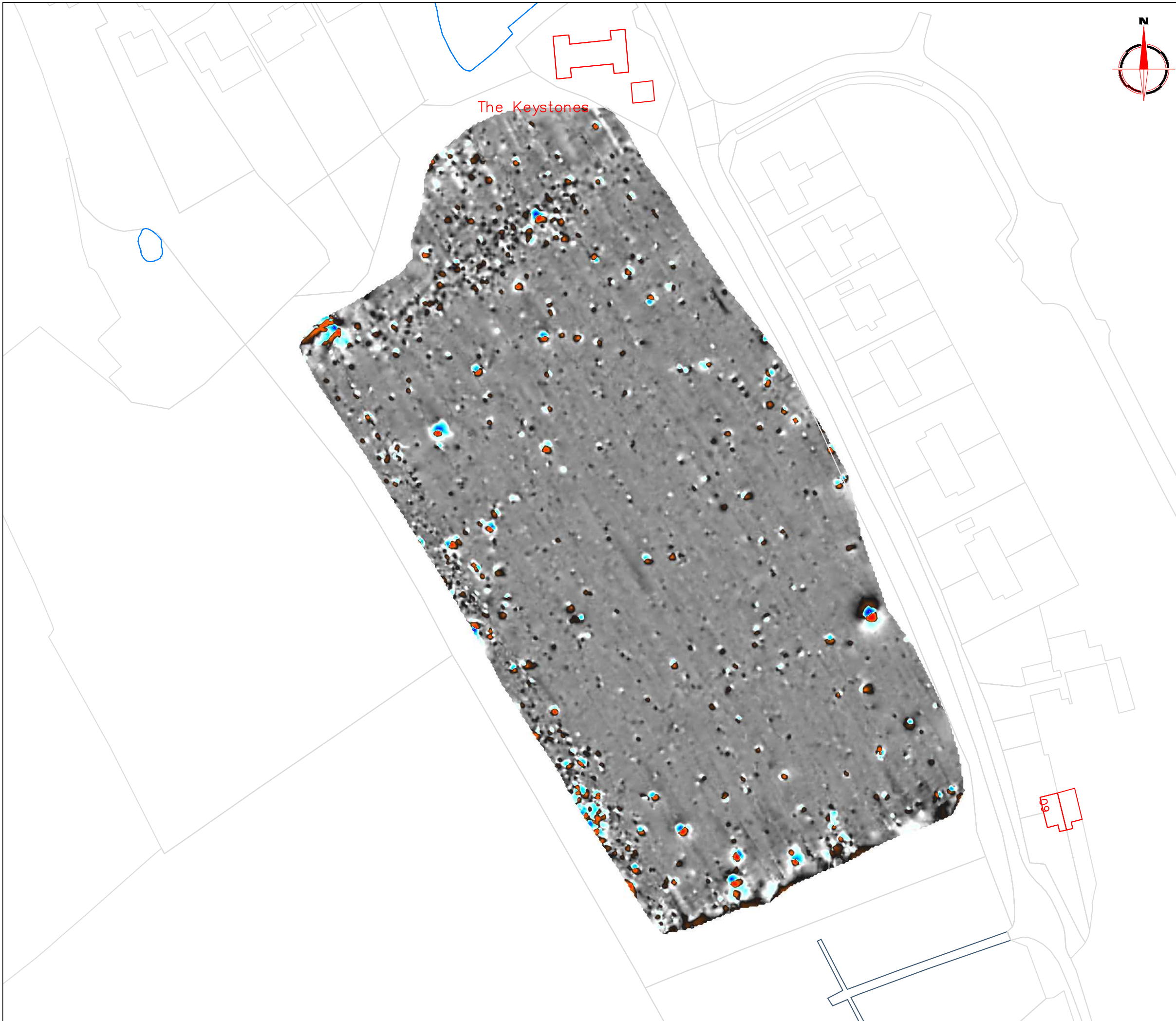
Subject  
**LOCATION OF SURVEY GRID AND REFERENCING**

**STRATASCAN™**  
**GEOPHYSICS FOR ARCHAEOLOGY AND ENGINEERING**  
 VINEYARD HOUSE T: 01684 592266  
 UPTON UPON SEVERN E: info@stratascan.co.uk  
 WR8 0SA www.stratascan.co.uk

**EUROPEAN GPR ASSOCIATION**  
**sumo** SUMO GROUP MEMBER  
 

Scale **1:1000** 

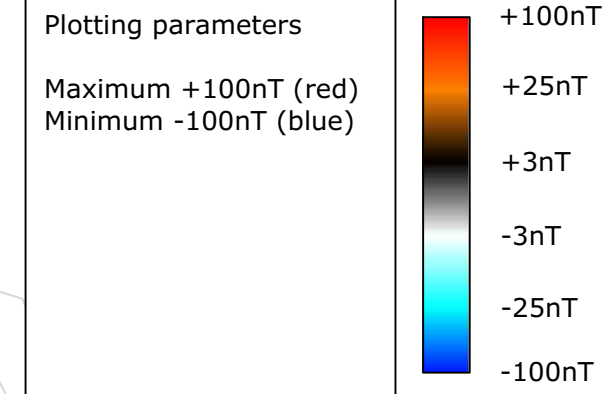
Plot <b>A3</b>	Checked by <b>PPB</b>	Issue No. <b>01</b>
Survey date <b>JUN 15</b>	Drawn by <b>MU</b>	Figure No. <b>02</b>



**Amendments**

Issue No.	Date	Description
-	-	-
-	-	-

© Stratascan Ltd - 2015



Client  
**TRIGPOINT CONSERVATION AND PLANNING LTD**

Project Title Job No. 8584  
**GEOPHYSICAL SURVEY - LAND OFF SANDPIT LANE, LONG CLAWSON, LEICESTERSHIRE**

Subject  
**COLOUR PLOT OF GRADIOMETER DATA SHOWING EXTREME VALUES**

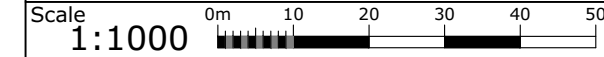
**STRATASCAN™**  
GEOPHYSICS FOR ARCHAEOLOGY AND ENGINEERING

VINEYARD HOUSE T: 01684 592266  
UPTON UPON SEVERN E: info@stratascan.co.uk  
WR8 0SA www.stratascan.co.uk

**EUROPEAN GPR ASSOCIATION**

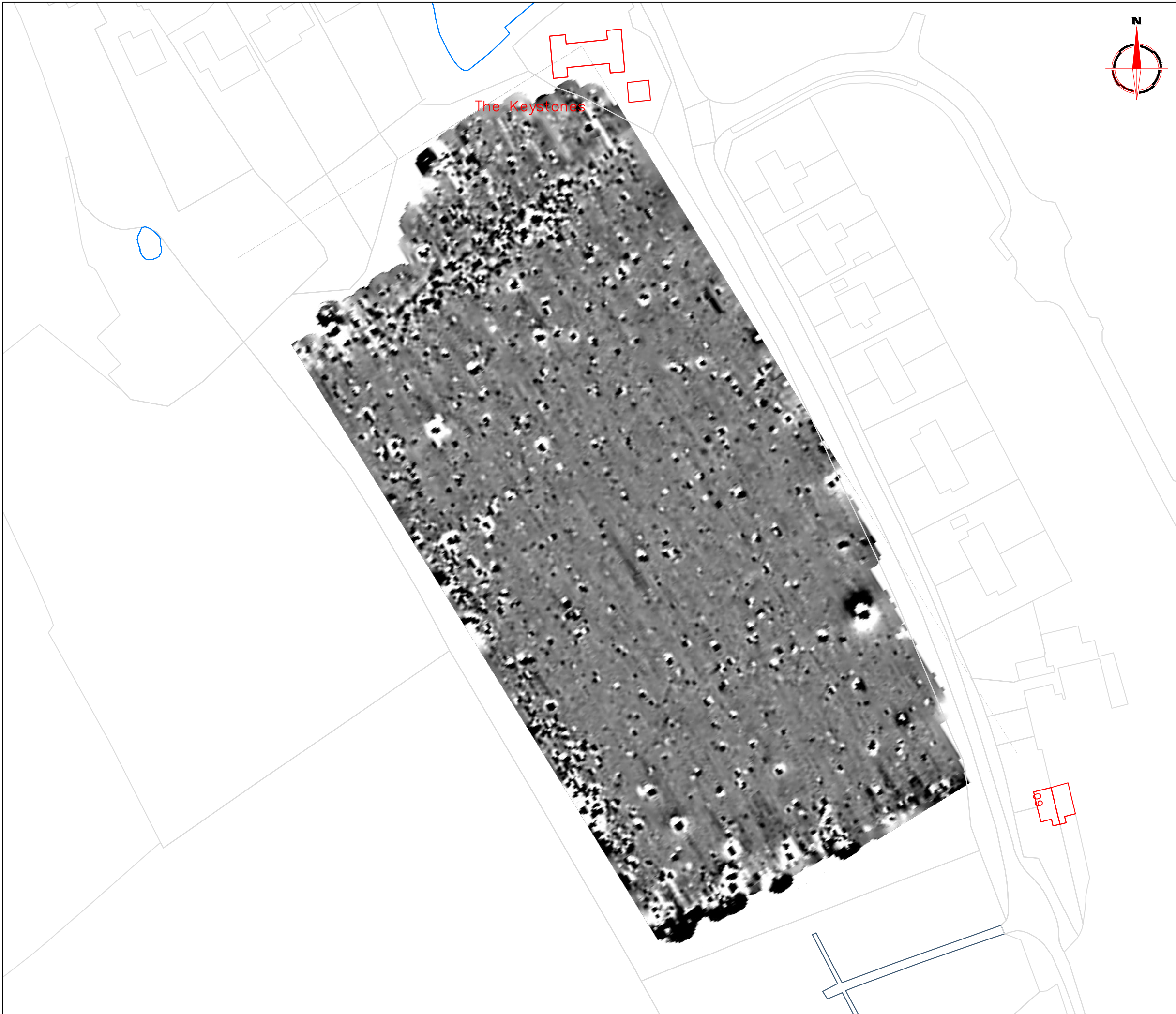
**SUMO** SUMO GROUP MEMBER

**ims** ISO 9001 certified **UKAS** ISO 14001 certified



Plot <b>A3</b>	Checked by <b>PPB</b>	Issue No. <b>01</b>
Survey date <b>JUN 15</b>	Drawn by <b>MU</b>	Figure No. <b>03</b>





**Amendments**

Issue No.	Date	Description
-	-	-
-	-	-

© Stratascan Ltd - 2015

Plotting parameters

Maximum +2nT (black)  
Minimum -2nT (white)

Client  
**TRIGPOINT CONSERVATION AND PLANNING LTD**

Project Title Job No. 8584  
**GEOPHYSICAL SURVEY - LAND OFF SANDPIT LANE, LONG CLAWSON, LEICESTERSHIRE**

Subject  
**PLOT OF MINIMALLY PROCESSED GRADIOMETER DATA**

**STRATASCAN™**  
**GEOPHYSICS FOR ARCHAEOLOGY AND ENGINEERING**

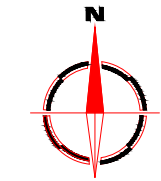
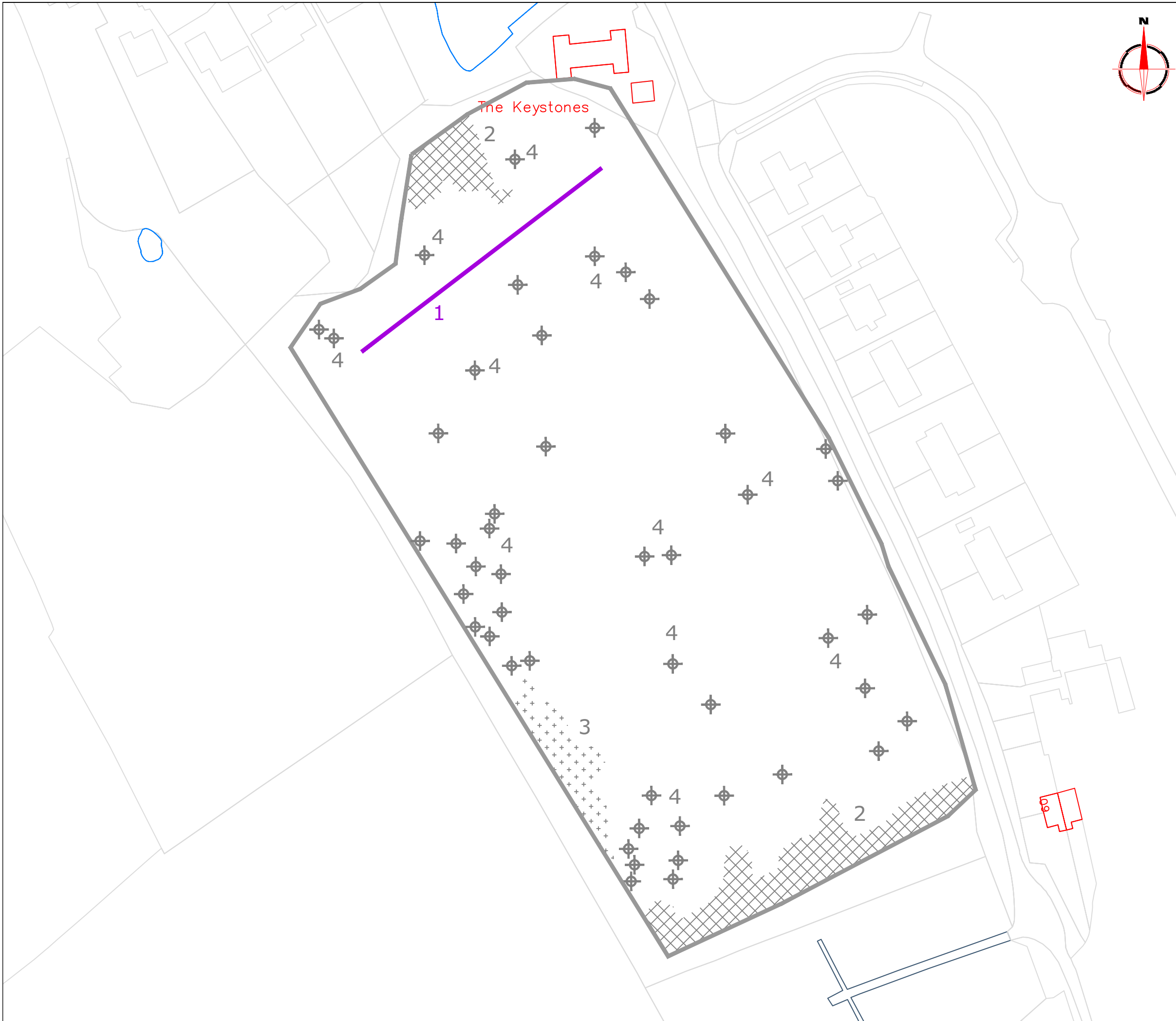
VINEYARD HOUSE T: 01684 592266  
UPTON UPON SEVERN E: info@stratascan.co.uk  
WR8 0SA www.stratascan.co.uk

**EUROPEAN GPR ASSOCIATION**

**SUMO SURVEY SERVICES** SUMO GROUP MEMBER

Scale **1:1000** 0m 10 20 30 40 50

Plot <b>A3</b>	Checked by <b>PPB</b>	Issue No. <b>01</b>
Survey date <b>JUN 15</b>	Drawn by <b>MU</b>	Figure No. <b>04</b>



Amendments		
Issue No.	Date	Description
-	-	-
-	-	-
© Stratascan Ltd - 2015		
<b>PROBABLE ARCHAEOLOGY</b>		
		Positive anomaly / weak positive anomaly - probable cut feature of archaeological origin
		Negative anomaly / weak negative anomaly - probable bank or earthwork of archaeological origin
<b>POSSIBLE ARCHAEOLOGY</b>		
		Positive anomaly / weak positive anomaly - possible cut feature of archaeological origin
		Negative anomaly / weak negative anomaly - possible bank or earthwork of archaeological origin
<b>MEDIEVAL/POST-MEDIEVAL AGRICULTURE</b>		
		Widely spaced curving parallel linear anomalies - probably related to ridge-and-furrow
		Closely spaced parallel linear anomalies - probably related to agricultural activity such as ploughing
		Linear anomaly - probably related to a former field boundary not present on available mapping
		Linear anomaly - related to a former field boundary present on available mapping
<b>OTHER ANOMALIES</b>		
		Linear anomaly - probably related to pipe, cable or other modern service
		Linear anomaly - unknown origin, probably related to modern agricultural activity
		Magnetic disturbance associated with nearby metal object such as service or field boundary
		Strong magnetic debris - possible disturbed or made ground
		Scattered magnetic debris
		Area of amorphous magnetic variation - probable natural (e.g. geological or pedological) origin
		Magnetic spike - probable ferrous object
Client <b>TRIGPOINT CONSERVATION AND PLANNING LTD</b>		
Project Title		Job No. 8584
<b>GEOPHYSICAL SURVEY - LAND OFF SANDPIT LANE, LONG CLAWSON, LEICESTERSHIRE</b>		
Subject <b>ABSTRACTION AND INTERPRETATION OF GRADIOMETER ANOMALIES</b>		
<b>STRATASCAN™</b>		
<b>GEOPHYSICS FOR ARCHAEOLOGY AND ENGINEERING</b>		
VINEYARD HOUSE		T: 01684 592266
UPTON UPON SEVERN		E: info@stratascan.co.uk
WR8 0SA		www.stratascan.co.uk
Scale 1:1000		
Plot	Checked by	Issue No.
A3	PPB	01
Survey date	Drawn by	Figure No.
JUN 15	MU	05

# Your Survey Partner

For a complete and complementary  
range of survey services

*Survey services  
you can rely on*

Archaeological  
As Built Records  
BIM Ready 3D Models  
Boundary Disputes  
CCTV  
Geophysical  
Laser Scanning  
Measured Building  
Pipeline Routes  
Railway  
Retrofit  
Setting Out  
Statutory Plan Collation  
Topographic  
Utility Mapping  
UXO Detection  
Void Detection

## **STRATASCAN LTD**

Vineyard House Upper Hook Road Upton upon Severn  
Worcestershire WR8 0SA United Kingdom

T:01684 592266 F: 01684 594142

info@stratascan.co.uk www.stratascan.co.uk

# STRATASCAN™



SUMO  
Group  
Member