

**GEOPHYSICAL SURVEY REPORT**

# **STRATASCAN™**



Project name:

**Ashby Road, Ullesthorpe, Leicestershire**

Client:

**University of Leicester Archaeological Services**

**November 2015**

Job ref:

**J9112**

Report author:

**Rebecca Davies BSc (Hons)**

# **GEOPHYSICAL SURVEY REPORT**

Project name:

**Ashby Road, Ullesthorpe, Leicestershire**

Client:

**University of Leicester Archaeological Services**



Job ref:

**J9112**

Techniques:

**Detailed magnetic survey –  
Gradiometry**

Survey date:

**2<sup>nd</sup> – 3<sup>rd</sup> November 2015**

Site centred at:

**SP 511 879**

Post code:

**LE17 5DN**

Field team:

**Richard Collins** BA (Hons), **Sam Wood,**  
**Sonia Kostrzewska** MA

Project manager:

**Simon Haddrell** BEng(Hons) AMBCS PCIfA

Report written By:

**Rebecca Davies** BSc (Hons)  
**Suzanne Reeves** BSc (Hons)

CAD illustrations by:

**Rebecca Davies** BSc (Hons)

Checked by:

**David Elks** MSc ACIfA

## TABLE OF CONTENTS

<b>LIST OF FIGURES.....</b>	<b>2</b>
<b>1 SUMMARY OF RESULTS .....</b>	<b>3</b>
<b>2 INTRODUCTION .....</b>	<b>3</b>
2.1 Background synopsis.....	3
2.2 Site location .....	3
2.3 Description of site .....	3
2.4 Geology and soils .....	3
2.5 Site history and archaeological potential .....	4
2.6 Survey objectives .....	4
2.7 Survey methods .....	4
2.8 Processing, presentation and interpretation of results.....	5
2.8.1 Processing .....	5
2.8.2 Presentation of results and interpretation.....	5
<b>3 RESULTS.....</b>	<b>5</b>
3.1 Probable Archaeology.....	6
3.2 Possible Archaeology .....	6
3.3 Medieval/Post-Medieval Agriculture.....	6
3.4 Other Anomalies .....	6
<b>4 DATA APPRAISAL &amp; CONFIDENCE ASSESSMENT .....</b>	<b>7</b>
<b>5 CONCLUSION .....</b>	<b>7</b>
<b>6 REFERENCES .....</b>	<b>8</b>
<b>APPENDIX A – METHODOLOGY &amp; SURVEY EQUIPMENT .....</b>	<b>9</b>
<b>APPENDIX B – BASIC PRINCIPLES OF MAGNETIC SURVEY .....</b>	<b>10</b>
<b>APPENDIX C – GLOSSARY OF MAGNETIC ANOMALIES.....</b>	<b>11</b>

## LIST OF FIGURES

Figure 01	1:25 000	Location plan of survey area
Figure 02	1:1500	Location of survey grids and referencing
Figure 03	1:1500	Colour plot of gradiometer data showing extreme values – overview
Figure 04	1:1250	Colour plot of gradiometer data showing extreme values – west
Figure 05	1:1250	Colour plot of gradiometer data showing extreme values – east
Figure 06	1:1500	Plot of minimally processed gradiometer data – overview
Figure 07	1:1250	Plot of minimally processed gradiometer data – west
Figure 08	1:1250	Plot of minimally processed gradiometer data - east
Figure 09	1:1500	Abstraction and interpretation of gradiometer anomalies – overview
Figure 10	1:1250	Abstraction and interpretation of gradiometer anomalies – west
Figure 11	1:1250	Abstraction and interpretation of gradiometer anomalies - east



## 1 SUMMARY OF RESULTS

A detailed gradiometry survey was conducted over approximately 9 hectares of mixed arable and pastoral farmland. No features of probable archaeological origin have been identified, despite the potential for prehistoric and roman remains. Former field boundaries and ridge and furrow indicate that the site has been used for agricultural purposes since the medieval period. The remaining features are natural or modern and include land drains, a former pond, areas of scattered magnetic debris, modern ploughing, and disturbance from nearby ferrous objects.

## 2 INTRODUCTION

### 2.1 *Background synopsis*

Stratascan were commissioned to undertake a geophysical survey of an area outlined for residential development. This survey forms part of an archaeological investigation being undertaken by the University of Leicester Archaeological Services.

### 2.2 *Site location*

The site is located to the north of Ashby Road, Ullesthorpe, Leicestershire at OS ref. SP 511 879.

### 2.3 *Description of site*

The survey area is approximately 10.4 hectares of agricultural land, comprising arable farmland and pasture, sloping downwards in a northerly direction. Approximately 1.4 hectares could not be surveyed due to overgrown vegetation, reducing the total survey area to 9 hectares.

### 2.4 *Geology and soils*

The underlying geology is part of the Mercia Mudstone Group – mudstone (British Geological Survey website). The drift geology is Oadby Member – Diamicton (British Geological Survey website).

The overlying soils are known as Beccles 3, which are typical stagnogley soils. These consist of slowly permeable waterlogged fine loamy over clayey soils, with some calcareous clayey soils particularly on steeper slopes (Soil Survey of England and Wales, Sheet 3 Midland and Western England).

## 2.5 **Site history and archaeological potential**

A search of Leicestershire and Rutland HER (Leicestershire County Council, 2015) within a 1km radius of the site identifies prehistoric, Roman and medieval remains within the area surrounding the site. Neolithic scrapers, cores, a knife, piercers and a hammerstone were recovered from the northern field of the site (Field D) (MLE7230) along with a number of Mesolithic finds in the same location (MLE2599). The number of finds recovered suggests that this was a possible occupation site. Further prehistoric finds have been recovered to the south-west of the site (MLE10502), along with Roman and Anglo-Saxon finds respectively (MLE 10379 & MLE10501). The number of Roman finds discovered to the south-west of the site (MLE 10379) suggests that there may have been Roman occupation within the vicinity.

A possible Iron Age site is recorded to the west of the village of Ullesthorpe (MLE21635). Trial trenching recorded a curving ditch with a terminal on the east side, likely to be a ring ditch, along with several post-holes. No dating evidence was recovered from the site, but the form is consistent with an Iron Age roundhouse.

The village of Ullesthorpe is recorded as a shrunken village (MLE10380) of medieval origin. Earthworks visible on aerial photographs to the west of the site appear to represent medieval plot boundaries (MLE21172). A geophysical survey carried out on this area in 2013 records one main enclosure and various other ditches related to extant earthworks. Areas of ridge and furrow are recorded within close proximity of the site, with one area in particular proving significant due to its location to the north of the Scheduled village earthworks (MLE21562).

An archaeological desk-based assessment for the site (University of Leicester Archaeological Services, 2015) indicates that “the site has good potential for the presence prehistoric and Roman remains although these are likely to have been plough eroded.”

## 2.6 **Survey objectives**

The objective of the survey was to locate any features of possible archaeological origin in order that they may be assessed prior to development.

## 2.7 **Survey methods**

This report and all fieldwork have been conducted in accordance with both the English Heritage guidelines outlined in the document: *Geophysical Survey in Archaeological Field Evaluation, 2008* and with the Chartered Institute for Archaeologists document *Standard and Guidance for Archaeological Geophysical Survey*.

Detailed magnetic survey (gradiometry) was used as an efficient and effective method of locating archaeological anomalies. More information regarding this technique is included in Appendix A.

## 2.8 *Processing, presentation and interpretation of results*

### 2.8.1 *Processing*

Processing is performed using specialist software. This can emphasise various aspects contained within the data but which are often not easily seen in the raw data. Basic processing of the magnetic data involves 'flattening' the background levels with respect to adjacent traverses and adjacent grids. Once the basic processing has flattened the background it is then possible to carry out further processing which may include low pass filtering to reduce 'noise' in the data and hence emphasise the archaeological or man-made anomalies.

The following schedule shows the basic processing carried out on all minimally processed gradiometer data used in this report:

1. *Destripe* (Removes striping effects caused by zero-point discrepancies between different sensors and walking directions)
2. *Destagger* (Removes zigzag effects caused by inconsistent walking speeds on sloping, uneven or overgrown terrain)

### 2.8.2 *Presentation of results and interpretation*

The presentation of the data for each site involves a print-out of the minimally processed data both as a greyscale plot and a colour plot showing extreme magnetic values. Magnetic anomalies have been identified and plotted onto the 'Abstraction and Interpretation of Anomalies' drawing for the site.

## 3 **RESULTS**

The detailed magnetic gradiometer survey conducted at Ashby Road, Ullesthorpe has identified a small number of anomalies that have been characterised as being of a *possible* archaeological origin.

The difference between *probable* and *possible* archaeological origin is a confidence rating. Features identified within the dataset that form recognisable archaeological patterns or seem to be related to a deliberate historical act have been interpreted as being of a probable archaeological origin.

Features of possible archaeological origin tend to be more amorphous anomalies which may have similar magnetic attributes in terms of strength or polarity but are difficult to classify as being archaeological or natural.

The following list of numbered anomalies refers to numerical labels on the interpretation plots.

### **3.1 Probable Archaeology**

No probable archaeology has been identified within the survey area.

### **3.2 Possible Archaeology**

No possible archaeology has been identified within the survey area.

### **3.3 Medieval/Post-Medieval Agriculture**

- 1-3** A small number of positive linear anomalies in the north of the site (Field D). These are related to former field boundaries present on available OS mapping. Anomaly 1 is visible from 1887 to 1891 and Anomalies 2 & 3 are visible from 1887 to 1968.
- 4** Areas of widely spaced parallel linear anomalies across the site. These are related to medieval ridge and furrow cultivation.
- 5** Areas of closely spaced parallel linear anomalies in the west and east of the site (Fields A & C). These are related to modern agricultural activity, such as ploughing.

### **3.4 Other Anomalies**

- 6** Areas of amorphous magnetic variation across the site. These are likely to be natural, i.e. geological, in origin.
- 7** An area of strong magnetic debris near the centre of the site (Field C). This is related to a former pond visible on available OS mapping from 1887 to 1967.
- 8** Areas of weak scattered magnetic debris near the centre of the site (Fields B & C). These are likely to be modern in origin.
- 9** Weak bipolar linear anomalies in the south and east of the site (Fields B & C). These are likely to be related to land drains.
- 10** Areas of magnetic disturbance are the result of substantial nearby ferrous metal objects such as fences and underground services. These effects can mask weaker archaeological anomalies, but on this site have not affected a significant proportion of the area.

- 11** A number of magnetic 'spikes' (strong focussed values with associated antipolar response) indicate ferrous metal objects. These are likely to be modern rubbish.

## **4 DATA APPRAISAL & CONFIDENCE ASSESSMENT**

Mudstone geologies can give variable results for gradiometer survey, however superficial deposits of Oadby Member diamicton generally provide good results. Despite the fact that no features of probable archaeological origin have been identified, areas of ridge and furrow and former field boundaries have been identified which suggests that the survey has been effective.

## **5 CONCLUSION**

The survey at Ullesthorpe has not identified any features of probable archaeological origin, despite the moderate potential for prehistoric and medieval remains. Areas of ridge and furrow cultivation and former field boundaries indicate that the site has been used for agricultural purposes since the medieval period. The remaining features are natural or modern in origin and include areas of natural magnetic variation, a former pond, areas of scattered magnetic debris, evidence of modern agriculture, land drains, and disturbance from nearby ferrous metal objects, such as fencing.



## 6 REFERENCES

British Geological Survey South Sheet, 1977. *Geological Survey Ten Mile Map, South Sheet First Edition (Quaternary)*. Institute of Geological Sciences.

British Geological Survey, 2001. *Geological Survey Ten Mile Map, South Sheet, Fourth Edition (Solid)*. British Geological Society.

British Geological Survey, n.d., *website*:  
(<http://www.bgs.ac.uk/opengeoscience/home.html?Accordion1=1#maps>) Geology of Britain viewer.

Chartered Institute For Archaeologists. *Standard and Guidance for Archaeological Geophysical Survey*.  
<http://www.archaeologists.net/sites/default/files/nodefiles/Geophysics2010.pdf>

English Heritage, 2008. *Geophysical Survey in Archaeological Field Evaluation*.

Leicestershire County Council, 2015. *Leicestershire and Rutland HER [online]* Available through:  
[www.heritagegateway.org.uk](http://www.heritagegateway.org.uk) Accessed 24/11/2015]

Soil Survey of England and Wales, 1983. *Soils of England and Wales, Sheet 3 Midland and Western England*.

University of Leicester Archaeological Services, 2015. *An archaeological desk-based assessment for land at Ashby Road, Ullesthorpe, Leicestershire*

## APPENDIX A – METHODOLOGY & SURVEY EQUIPMENT

### ***Grid locations***

The location of the survey grids has been plotted together with the referencing information. Grids were set out using a Leica 705auto Total Station and referenced to suitable topographic features around the perimeter of the site or a Leica Smart Rover RTK GPS.

An RTK GPS (Real-time Kinematic Global Positioning System) can locate a point on the ground to a far greater accuracy than a standard GPS unit. A standard GPS suffers from errors created by satellite orbit errors, clock errors and atmospheric interference, resulting in an accuracy of 5m-10m. An RTK system uses a single base station receiver and a number of mobile units. The base station re-broadcasts the phase of the carrier it measured, and the mobile units compare their own phase measurements with those they received from the base station. A SmartNet RTK GPS uses Ordnance Survey's network of over 100 fixed base stations to give an accuracy of around 0.01m.

### ***Survey equipment and gradiometer configuration***

Although the changes in the magnetic field resulting from differing features in the soil are usually weak, changes as small as 0.2 nanoTeslas (nT) in an overall field strength of 48,000nT, can be accurately detected using an appropriate instrument.

The mapping of the anomaly in a systematic manner will allow an estimate of the type of material present beneath the surface. Strong magnetic anomalies will be generated by buried iron-based objects or by kilns or hearths. More subtle anomalies such as pits and ditches can be seen if they contain more humic material which is normally rich in magnetic iron oxides when compared with the subsoil.

To illustrate this point, the cutting and subsequent silting or backfilling of a ditch may result in a larger volume of weakly magnetic material being accumulated in the trench compared to the undisturbed subsoil. A weak magnetic anomaly should therefore appear in plan along the line of the ditch.

The magnetic survey was carried out using a dual sensor Grad601-2 Magnetic Gradiometer manufactured by Bartington Instruments Ltd. The instrument consists of two fluxgates very accurately aligned to nullify the effects of the Earth's magnetic field. Readings relate to the difference in localised magnetic anomalies compared with the general magnetic background. The Grad601-2 consists of two high stability fluxgate gradiometers suspended on a single frame. Each gradiometer has a 1m separation between the sensing elements so enhancing the response to weak anomalies.

### ***Sampling interval***

Readings were taken at 0.25m centres along traverses 1m apart. This equates to 3600 sampling points in a full 30m x 30m grid.

### ***Depth of scan and resolution***

The Grad 601-2 has a typical depth of penetration of 0.5m to 1.0m, though strongly magnetic objects may be visible at greater depths. The collection of data at 0.25m centres provides an optimum methodology for the task balancing cost and time with resolution.

### ***Data capture***

The readings are logged consecutively into the data logger which in turn is daily down-loaded into a portable computer whilst on site. At the end of each site survey, data is transferred to the office for processing and presentation.

## APPENDIX B – BASIC PRINCIPLES OF MAGNETIC SURVEY

Detailed magnetic survey can be used to effectively define areas of past human activity by mapping spatial variation and contrast in the magnetic properties of soil, subsoil and bedrock.

Weakly magnetic iron minerals are always present within the soil and areas of enhancement relate to increases in *magnetic susceptibility* and permanently magnetised *thermoremanent* material.

Magnetic susceptibility relates to the induced magnetism of a material when in the presence of a magnetic field. This magnetism can be considered as effectively permanent as it exists within the Earth's magnetic field. Magnetic susceptibility can become enhanced due to burning and complex biological or fermentation processes.

Thermoremanence is a permanent magnetism acquired by iron minerals that, after heating to a specific temperature known as the Curie Point, are effectively demagnetised followed by re-magnetisation by the Earth's magnetic field on cooling. Thermoremanent archaeological features can include hearths and kilns and material such as brick and tile may be magnetised through the same process.

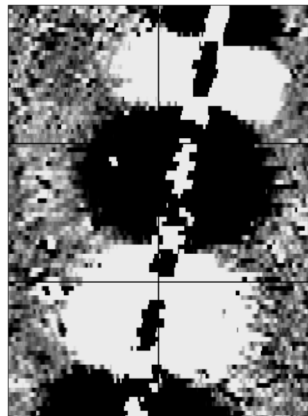
Silting and deliberate infilling of ditches and pits with magnetically enhanced soil creates a relative contrast against the much lower levels of magnetism within the subsoil into which the feature is cut. Systematic mapping of magnetic anomalies will produce linear and discrete areas of enhancement allowing assessment and characterisation of subsurface features. Material such as subsoil and non-magnetic bedrock used to create former earthworks and walls may be mapped as areas of lower enhancement compared to surrounding soils.

Magnetic survey is carried out using a fluxgate gradiometer which is a passive instrument consisting of two sensors mounted vertically 1m apart. The instrument is carried about 30cm above the ground surface and the top sensor measures the Earth's magnetic field whilst the lower sensor measures the same field but is also more affected by any localised buried field. The difference between the two sensors will relate to the strength of a magnetic field created by a buried feature, if no field is present the difference will be close to zero as the magnetic field measured by both sensors will be the same.

Factors affecting the magnetic survey may include soil type, local geology, previous human activity, disturbance from modern services etc.

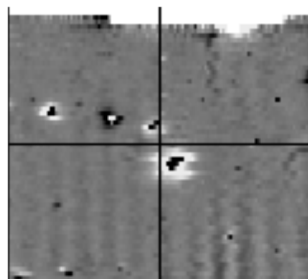
## APPENDIX C – GLOSSARY OF MAGNETIC ANOMALIES

### Bipolar



A bipolar anomaly is one that is composed of both a positive response and a negative response. It can be made up of any number of positive responses and negative responses. For example a pipeline consisting of alternating positive and negative anomalies is said to be bipolar. See also dipolar which has only one area of each polarity. The interpretation of the anomaly will depend on the magnitude of the magnetic field strength. A weak response may be caused by a clay field drain while a strong response will probably be caused by a metallic service.

### Dipolar

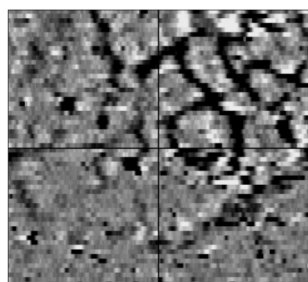


This consists of a single positive anomaly with an associated negative response. There should be no separation between the two polarities of response. These responses will be created by a single feature. The interpretation of the anomaly will depend on the magnitude of the magnetic measurements. A very strong anomaly is likely to be caused by a ferrous object.

### Positive anomaly with associated negative response

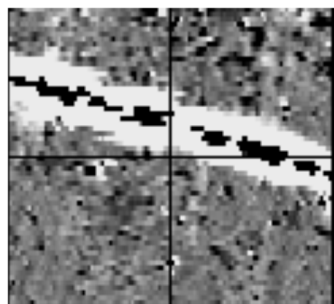
See bipolar and dipolar.

### Positive linear



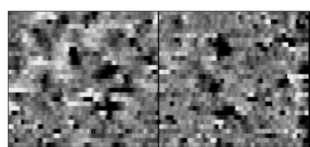
A linear response which is entirely positive in polarity. These are usually related to in-filled cut features where the fill material is magnetically enhanced compared to the surrounding matrix. They can be caused by ditches of an archaeological origin, but also former field boundaries, ploughing activity and some may even have a natural origin.

### Positive linear anomaly with associated negative response



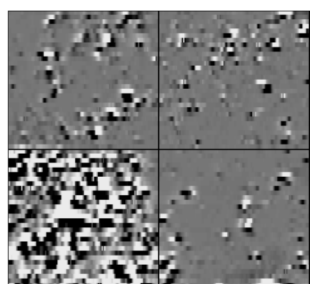
A positive linear anomaly which has a negative anomaly located adjacently. This will be caused by a single feature. In the example shown this is likely to be a single length of wire/cable probably relating to a modern service. Magnetically weaker responses may relate to earthwork style features and field boundaries.

### Positive point/area



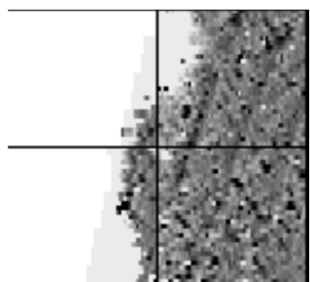
These are generally spatially small responses, perhaps covering just 3 or 4 reading nodes. They are entirely positive in polarity. Similar to positive linear anomalies they are generally caused by in-filled cut features. These include pits of an archaeological origin, possible tree bowls or other naturally occurring depressions in the ground.

### Magnetic debris



Magnetic debris consists of numerous dipolar responses spread over an area. If the amplitude of response is low ( $\pm 3\text{nT}$ ) then the origin is likely to represent general ground disturbance with no clear cause, it may be related to something as simple as an area of dug or mixed earth. A stronger anomaly ( $\pm 250\text{nT}$ ) is more indicative of a spread of ferrous debris. Moderately strong anomalies may be the result of a spread of thermoremanent material such as bricks or ash.

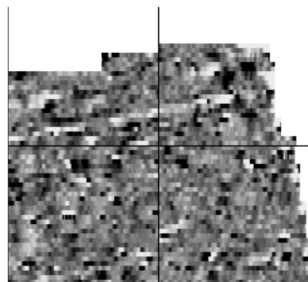
### Magnetic disturbance



Magnetic disturbance is high amplitude and can be composed of either a bipolar anomaly, or a single polarity response. It is essentially associated with magnetic interference from modern ferrous structures such as fencing, vehicles or buildings, and as a result is commonly found around the perimeter of a site near to boundary fences.



### Negative linear

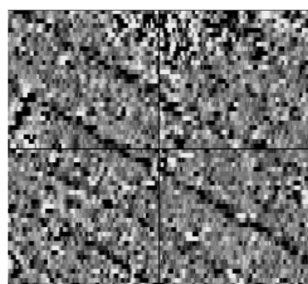


A linear response which is entirely negative in polarity. These are generally caused by earthen banks where material with a lower magnetic magnitude relative to the background top soil is built up. See also ploughing activity.

### Negative point/area

Opposite to positive point anomalies these responses may be caused by raised areas or earthen banks. These could be of an archaeological origin or may have a natural origin.

### Ploughing activity



Ploughing activity can often be visualised by a series of parallel linear anomalies. These can be of either positive polarity or negative polarity depending on site specifics. It can be difficult to distinguish between ancient ploughing and more modern ploughing. Clues such as the separation of each linear, straightness, strength of response and cross cutting relationships can be used to aid this, although none of these can be guaranteed to differentiate between different phases of activity.

### Polarity

Term used to describe the measurement of the magnetic response. An anomaly can have a positive polarity (values above 0nT) and/or a negative polarity (values below 0nT).

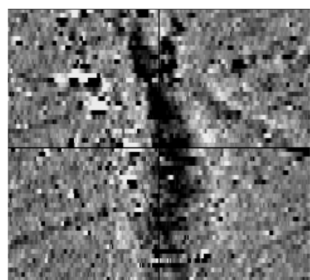
### Strength of response

The amplitude of a magnetic response is an important factor in assigning an interpretation to a particular anomaly. For example a positive anomaly covering a 10m<sup>2</sup> area may have values up to around 3000nT, in which case it is likely to be caused by modern magnetic interference. However, the same size and shaped anomaly but with values up to only 4nT may have a natural origin. Colour plots are used to show the amplitude of response.

### Thermoremanent response

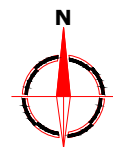
A feature which has been subject to heat may result in it acquiring a magnetic field. This can be anything up to approximately  $\pm 100$  nT in value. These features include clay fired drains, brick, bonfires, kilns, hearths and even pottery. If the heat application has occurred in situ (e.g. a kiln) then the response is likely to be bipolar compared to if the heated objects have been disturbed and moved relative to each other, in which case they are more likely to take an irregular form and may display a debris style response (e.g. ash).

### Weak background variations

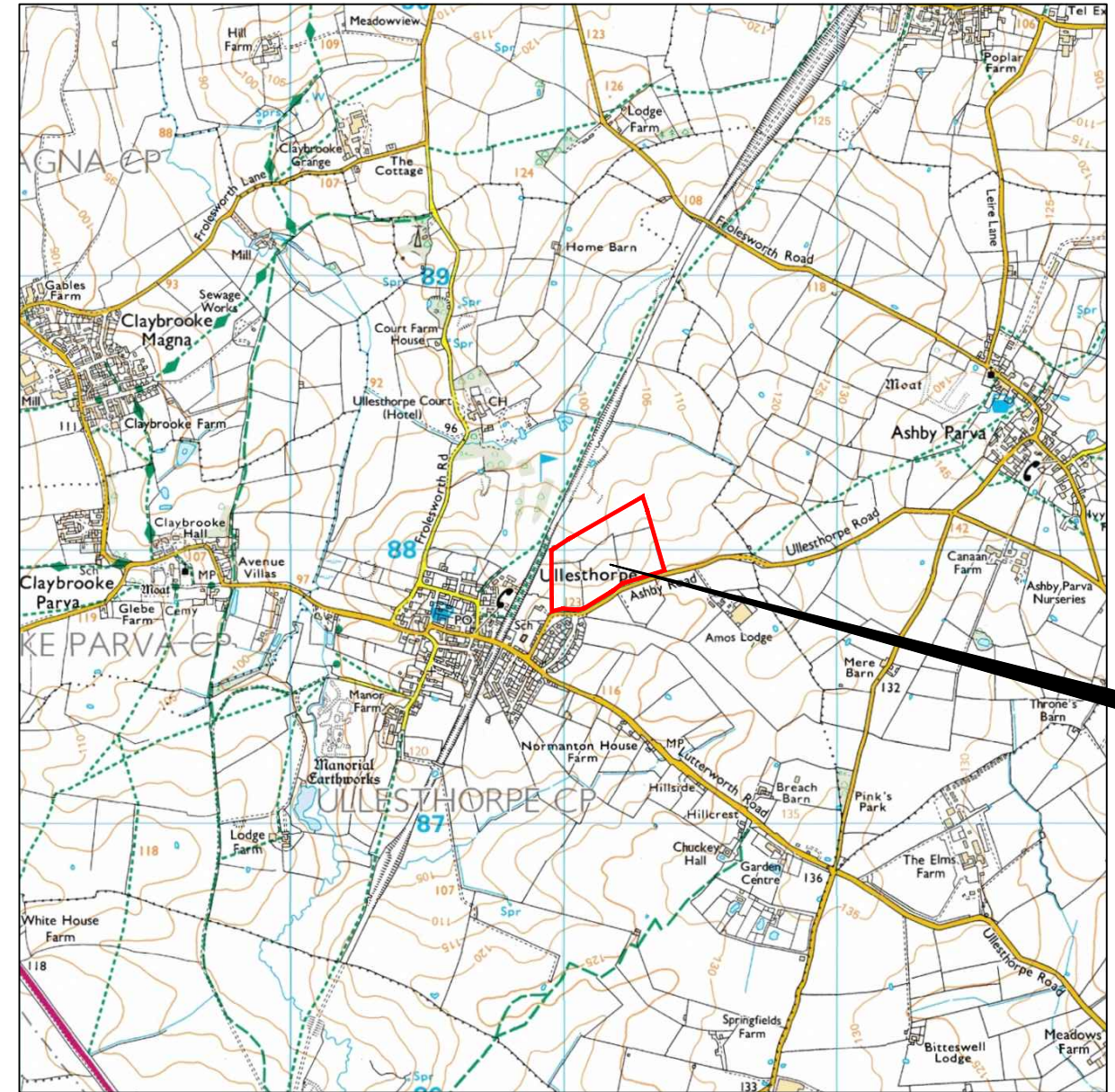


Weakly magnetic wide scale variations within the data can sometimes be seen within sites. These usually have no specific structure but can often appear curvy and sinuous in form. They are likely to be the result of natural features, such as soil creep, dried up (or seasonal) streams. They can also be caused by changes in the underlying geology or soil type which may contain unpredictable distributions of magnetic minerals, and are usually apparent in several locations across a site.

Reproduced from Ordnance Survey's 1:25 000 map of 1998 with the permission of the controller of Her Majesty's Stationery Office. Crown Copyright reserved. Licence No: AL 50125A  
Licencee:  
Stratascan Ltd.  
Vineyard House  
Upper Hook Road  
Upton Upon Severn  
WR8 0SA  
OS 100km square = SP



90  
89  
88  
87  
86



49 50 51 52 53

### Amendments

Issue No.	Date	Description
-	-	-
-	-	-

© Stratascan Ltd - 2015

Site centred on NGR **SP 511 879**

Client **UNIVERSITY OF LEICESTER  
ARCHAEOLOGICAL SERVICES**

Project Title **GEOPHYSICAL SURVEY - ASHBY ROAD, ULLESTHORPE** Job No. **9112**

Subject **LOCATION PLAN OF SURVEY AREA**

**STRATASCAN™**  
GEOPHYSICS FOR ARCHAEOLOGY  
AND ENGINEERING

VINEYARD HOUSE  
UPTON UPON SEVERN  
WR8 0SA

T: 01684 592266  
E: info@stratascan.co.uk  
www.stratascan.co.uk

**EUROPEAN  
GPR  
ASSOCIATION**

**SURVEY  
SUMO**

REGISTERED ORGANISATION  
UKAS  
UKAS  
UKAS

SUMO GROUP MEMBER

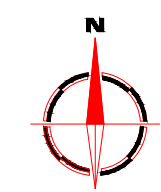
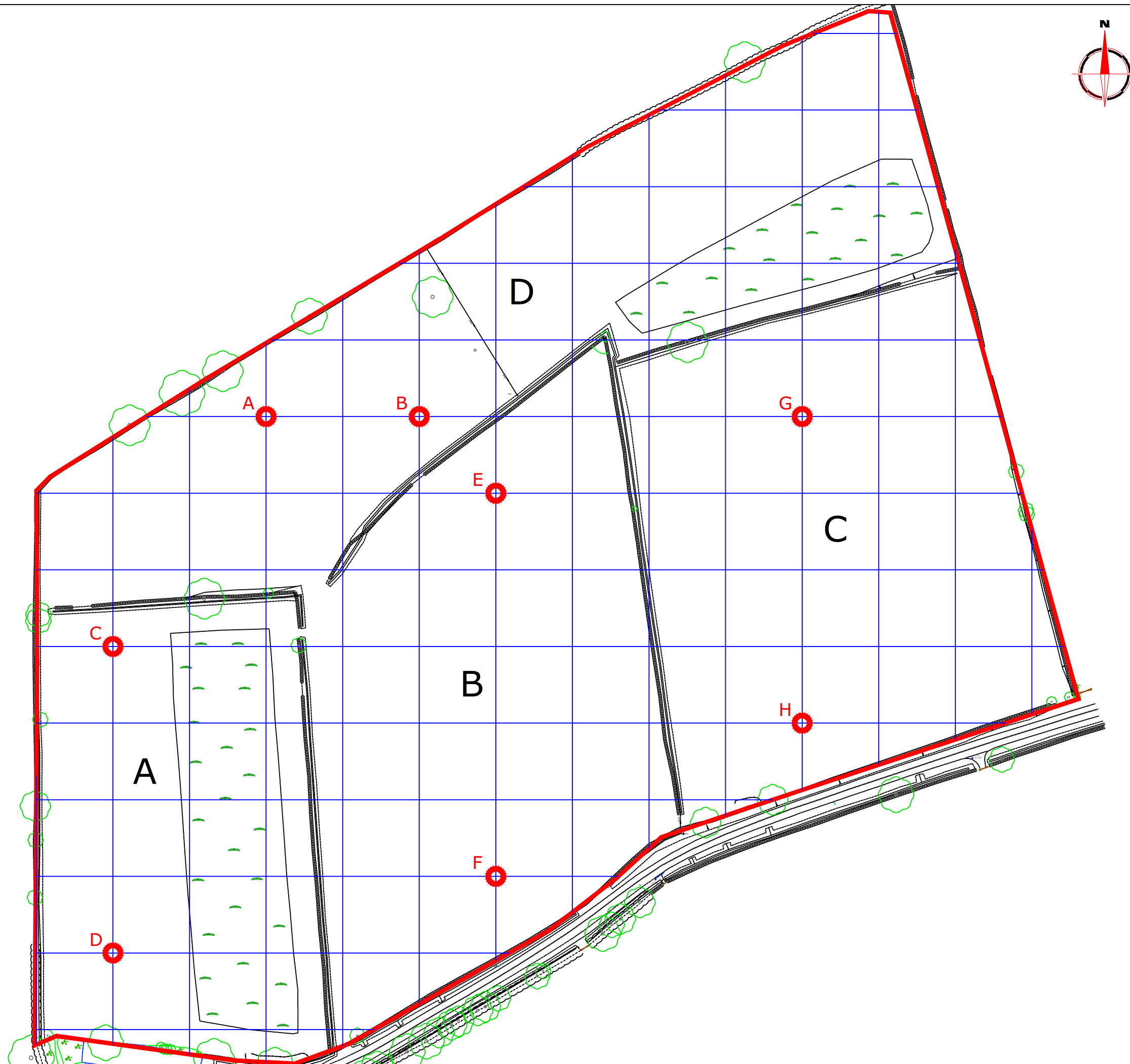
ISO 9001 certified  
ISO 14001 certified

Scale **1:25000**

0m 500 1000m

Plot <b>A3</b>	Checked by <b>DGE</b>	Issue No. <b>01</b>
Survey date <b>NOV 15</b>	Drawn by <b>RD</b>	Figure No. <b>01</b>





### Amendments

Issue No.	Date	Description
-	-	-
-	-	-

© Stratascan Ltd - 2015

### OS GRID REFERENCES

A	451049.49, 288025.20
B	451109.49, 288025.20
C	450989.49, 287935.20
D	450989.49, 287815.20
E	451139.49, 287995.20
F	451139.49, 287845.20
G	451259.49, 288025.20
H	451259.49, 287905.20

Client  
**UNIVERSITY OF LEICESTER  
ARCHAEOLOGICAL SERVICES**

Project Title  
**GEOPHYSICAL SURVEY - ASHBY  
ROAD, ULLESTHORPE**

Job No. 9112

Subject  
**LOCATION OF SURVEY GRIDS AND  
REFERENCING**

**STRATASCAN™**  
GEOPHYSICS FOR ARCHAEOLOGY  
AND ENGINEERING

VINEYARD HOUSE T: 01684 592266  
UPTON UPON SEVERN E: info@stratascan.co.uk  
WR8 0SA www.stratascan.co.uk

**EUROPEAN GPR ASSOCIATION**

**sumo** SUMO GROUP MEMBER

REGISTERED ORGANISATION

ims ISO 9001 certified

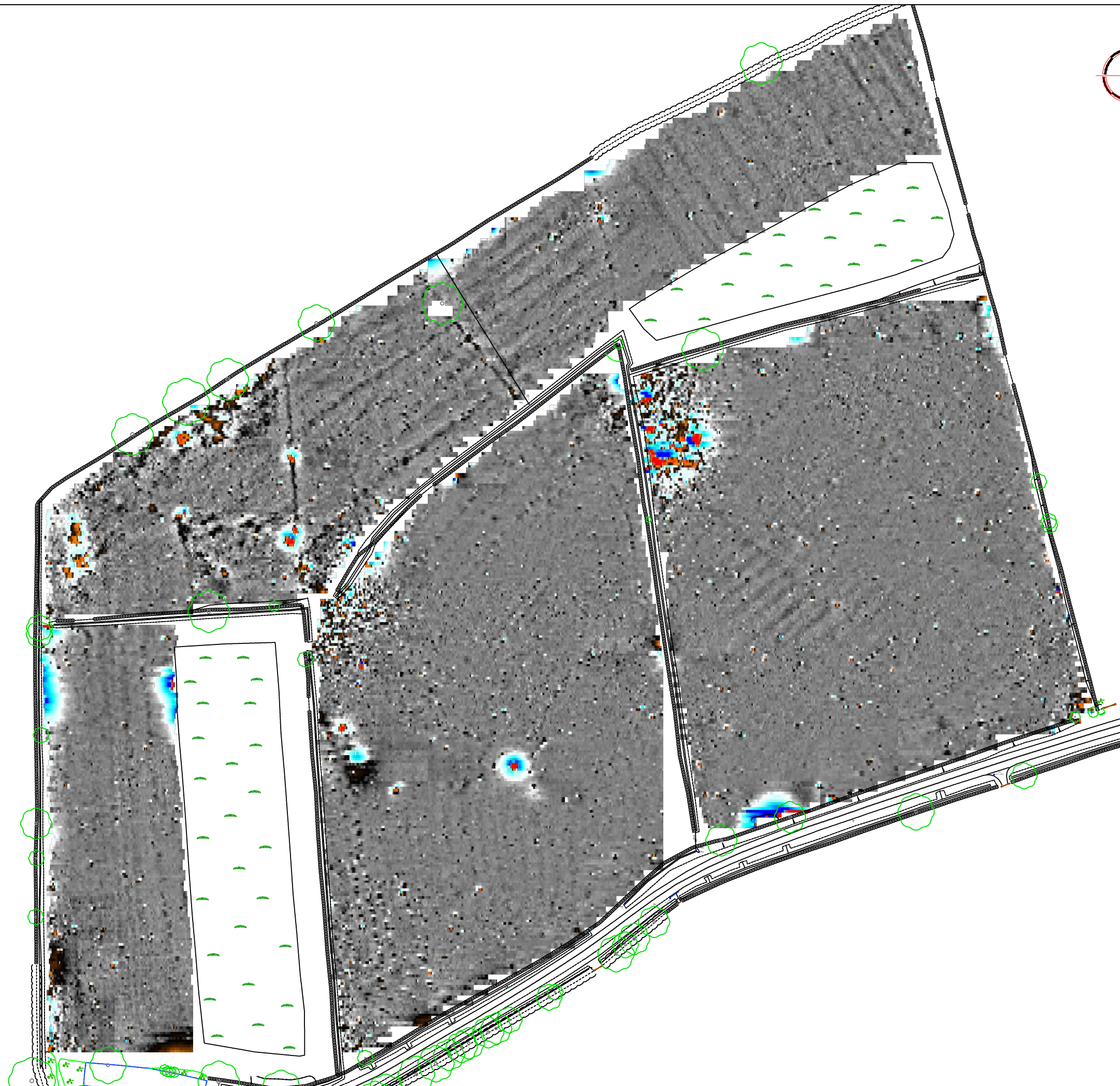
ims ISO 14001 certified

Scale  
**1:1500**

0m 10 20 30 40 50m

Plot <b>A3</b>	Checked by <b>DGE</b>	Issue No. <b>01</b>
Survey date <b>NOV 15</b>	Drawn by <b>RD</b>	Figure No. <b>02</b>





## Amendments

Issue No.	Date	Description
-	-	-
-	-	-

© Stratascan Ltd - 2015

Plotting parameters

Maximum +100nT (red)  
Minimum -100nT (blue)

+100nT

+25nT

+3nT

-3nT

-25nT

-100nT

Client  
**UNIVERSITY OF LEICESTER  
ARCHAEOLOGICAL SERVICES**

Project Title  
**GEOPHYSICAL SURVEY - ASHBY  
ROAD, ULLESTHORPE**

Job No. 9112

Subject  
**COLOUR PLOT OF GRADIOMETER DATA  
SHOWING EXTREME VALUES - OVERVIEW**

**STRATASCAN™**  
GEOPHYSICS FOR ARCHAEOLOGY  
AND ENGINEERING

VINEYARD HOUSE  
UPTON UPON SEVERN  
WR8 0SA

T: 01684 592266  
E: info@stratascan.co.uk  
www.stratascan.co.uk

**EUROPEAN  
GPR  
ASSOCIATION**

**sumo**  
Survey Services

SUMO  
GROUP  
MEMBER

**REGISTERED  
ORGANISATION**

**ims**  
ISO 9001  
certified

**UKAS**  
QUALITY  
MANAGEMENT  
078

**ims**  
ISO 14001  
certified

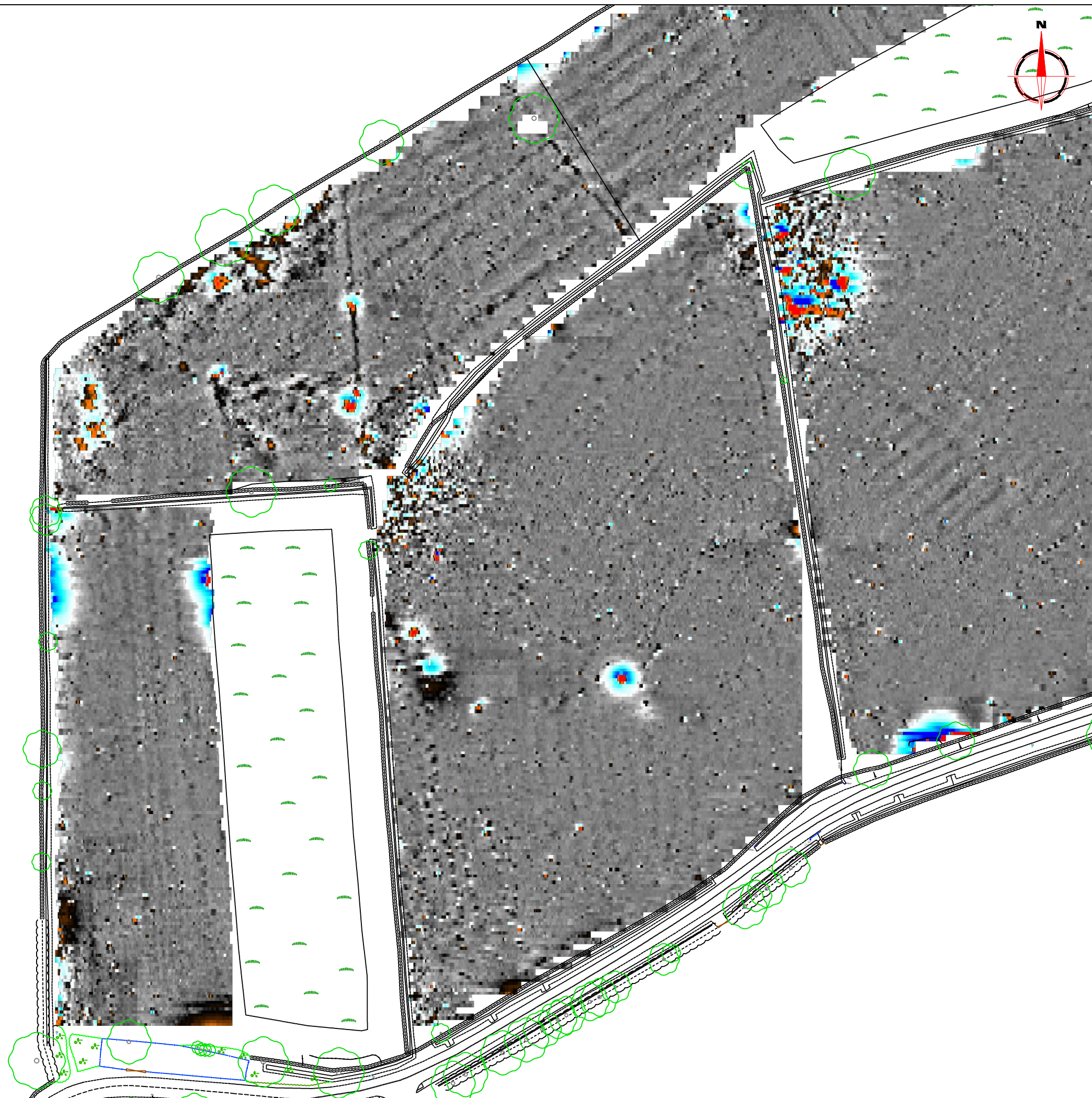
**UKAS**  
ENVIRONMENTAL  
MANAGEMENT  
078

Scale  
**1:1500**

0m 10 20 30 40 50m

Plot <b>A3</b>	Checked by <b>DGE</b>	Issue No. <b>01</b>
Survey date <b>NOV 15</b>	Drawn by <b>RD</b>	Figure No. <b>03</b>





Amendments		
Issue No.	Date	Description
-	-	-
-	-	-

© Stratascan Ltd - 2015

Plotting parameters	<div>+100nT</div> <div>+25nT</div> <div>+3nT</div> <div>-3nT</div> <div>-25nT</div> <div>-100nT</div>
Maximum +100nT (red)	
Minimum -100nT (blue)	

Client  
**UNIVERSITY OF LEICESTER  
ARCHAEOLOGICAL SERVICES**

Project Title  
**GEOPHYSICAL SURVEY - ASHBY  
ROAD, ULLESTHORPE**

Job No. 9112

Subject  
**COLOUR PLOT OF GRADIOMETER DATA  
SHOWING EXTREME VALUES - WEST**

**STRATASCAN™**  
GEOPHYSICS FOR ARCHAEOLOGY  
AND ENGINEERING

VINEYARD HOUSE  
UPTON UPON SEVERN  
WR8 0SA

T: 01684 592266  
E: info@stratascan.co.uk  
www.stratascan.co.uk

**EUROPEAN  
GPR  
ASSOCIATION**

**sumo**  
Survey Services

SUMO  
GROUP  
MEMBER

**ims**  
ISO 9001  
certified

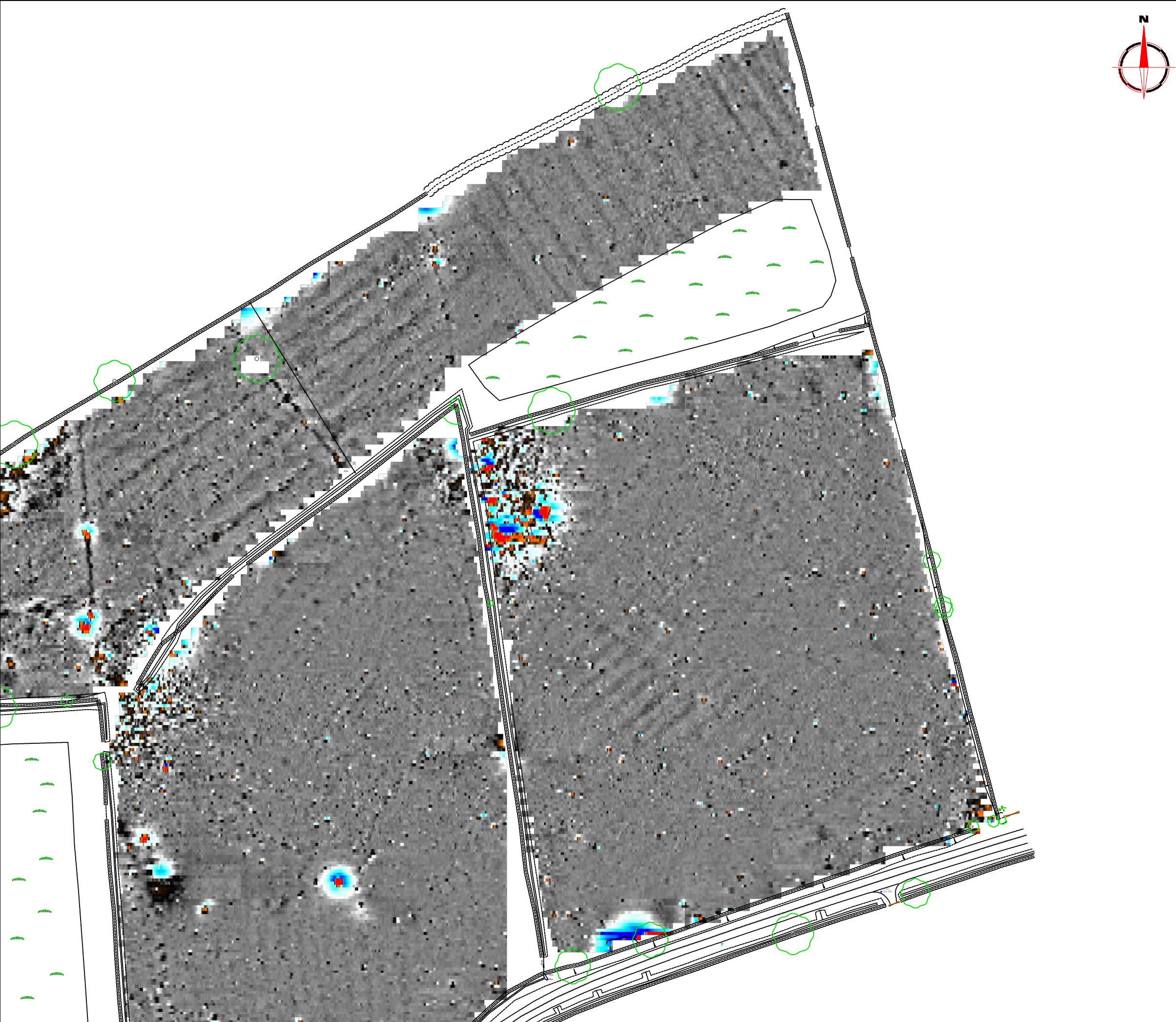
**ims**  
ISO 14001  
certified

Scale  
**1:1250**

0m 10 20 30 40 50m

Plot <b>A3</b>	Checked by <b>DGE</b>	Issue No. <b>01</b>
Survey date <b>NOV 15</b>	Drawn by <b>RD</b>	Figure No. <b>04</b>





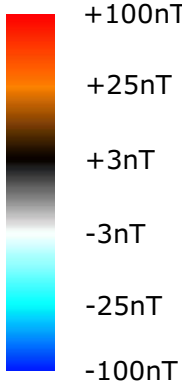
Amendments

Issue No.	Date	Description
-	-	-
-	-	-

© Stratascan Ltd - 2015

Plotting parameters

Maximum +100nT (red)  
Minimum -100nT (blue)



Client  
UNIVERSITY OF LEICESTER  
ARCHAEOLOGICAL SERVICES

Project Title  
GEOPHYSICAL SURVEY - ASHBY  
ROAD, ULLESTHORPE

Subject  
COLOUR PLOT OF GRADIOMETER DATA  
SHOWING EXTREME VALUES - EAST



**STRATASCAN™**  
GEOPHYSICS FOR ARCHAEOLOGY  
AND ENGINEERING

VINEYARD HOUSE  
UPTON UPON SEVERN  
WR8 0SA

T: 01684 592266  
E: info@stratascan.co.uk  
www.stratascan.co.uk



**EUROPEAN  
GPR  
ASSOCIATION**



**SUMO**  
GROUP  
MEMBER

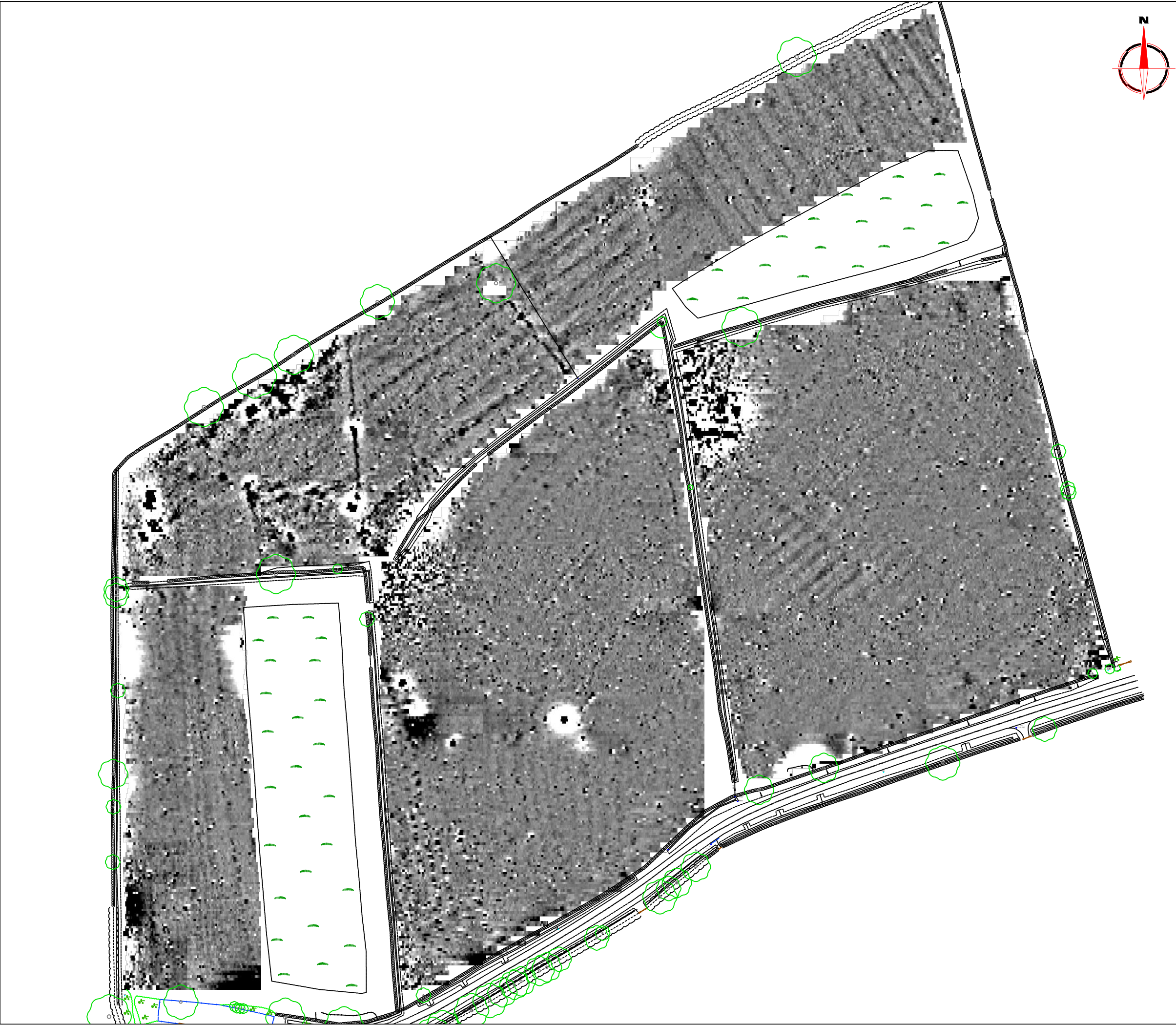


Scale  
1:1250



Plot A3	Checked by DGE	Issue No. 01
Survey date NOV 15	Drawn by RD	Figure No. 05





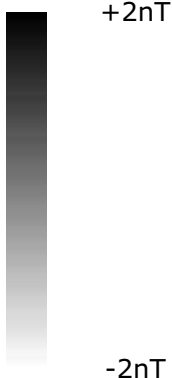
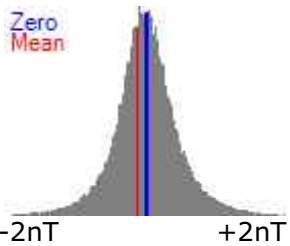
Amendments

Issue No.	Date	Description
-	-	-
-	-	-

© Stratascan Ltd - 2015

Plotting parameters

Maximum +2nT (black)  
Minimum -2nT (white)



Client	UNIVERSITY OF LEICESTER ARCHAEOLOGICAL SERVICES	
Project Title	GEOPHYSICAL SURVEY - ASHBY ROAD, ULLESTHORPE	Job No. 9112
Subject	PLOT OF MINIMALLY PROCESSED GRADIOMETER DATA - OVERVIEW	



**STRATASCAN™**  
GEOPHYSICS FOR ARCHAEOLOGY  
AND ENGINEERING

VINEYARD HOUSE  
UPTON UPON SEVERN  
WR8 0SA

T: 01684 592266  
E: info@stratascan.co.uk  
www.stratascan.co.uk



SUMO  
GROUP  
MEMBER



ISO 9001  
certified

ISO 14001  
certified

Scale	1:1500		0m 10 20 30 40 50m
Plot	A3	Checked by DGE	Issue No. 01
Survey date	NOV 15	Drawn by RD	Figure No. 06





Amendments		
Issue No.	Date	Description
-	-	-
-	-	-

© Stratascan Ltd - 2015

Plotting parameters

Maximum +2nT (black)  
Minimum -2nT (white)

Zero  
Mean

-2nT      +2nT

+2nT

-2nT

Client  
**UNIVERSITY OF LEICESTER  
ARCHAEOLOGICAL SERVICES**

Project Title  
**GEOPHYSICAL SURVEY - ASHBY  
ROAD, ULLESTHORPE**

Job No. 9112

Subject  
**PLOT OF MINIMALLY PROCESSED  
GRADIOMETER DATA - WEST**

**STRATASCAN™**  
GEOPHYSICS FOR ARCHAEOLOGY  
AND ENGINEERING

VINEYARD HOUSE T: 01684 592266  
UPTON UPON SEVERN E: info@stratascan.co.uk  
WR8 0SA www.stratascan.co.uk

**EUROPEAN  
GPR  
ASSOCIATION**

**sumo**  
Survey Services

SUMO  
GROUP  
MEMBER

**ims**  
ISO 9001  
certified

**UKAS**  
MANUFACTURING  
078

**ims**  
ISO 14001  
certified

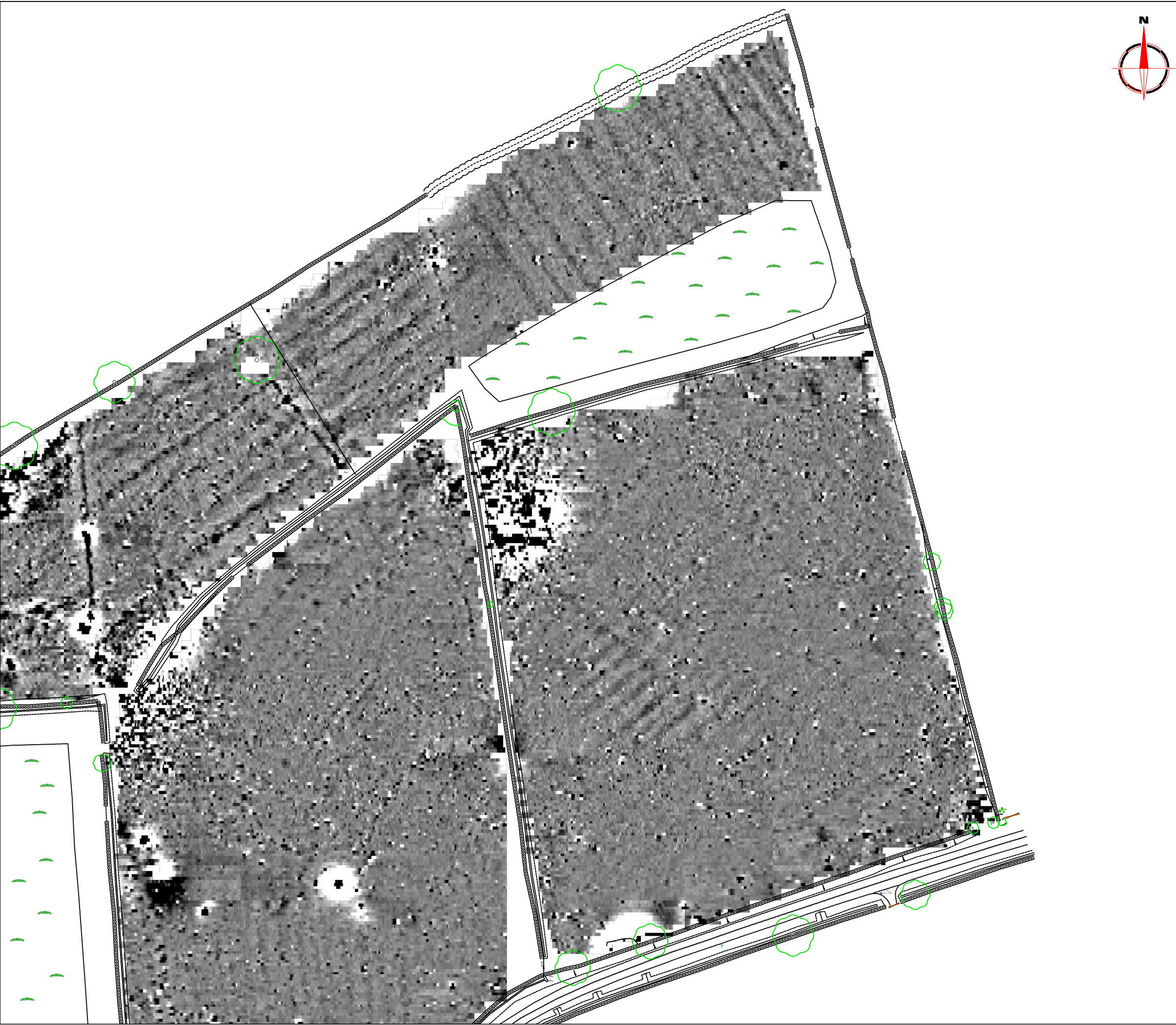
**UKAS**  
ENVIRONMENTAL  
078

Scale  
**1:1250**

0m 10 20 30 40 50m

Plot <b>A3</b>	Checked by <b>DGE</b>	Issue No. <b>01</b>
Survey date <b>NOV 15</b>	Drawn by <b>RD</b>	Figure No. <b>07</b>

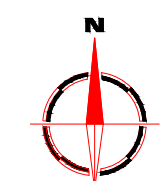
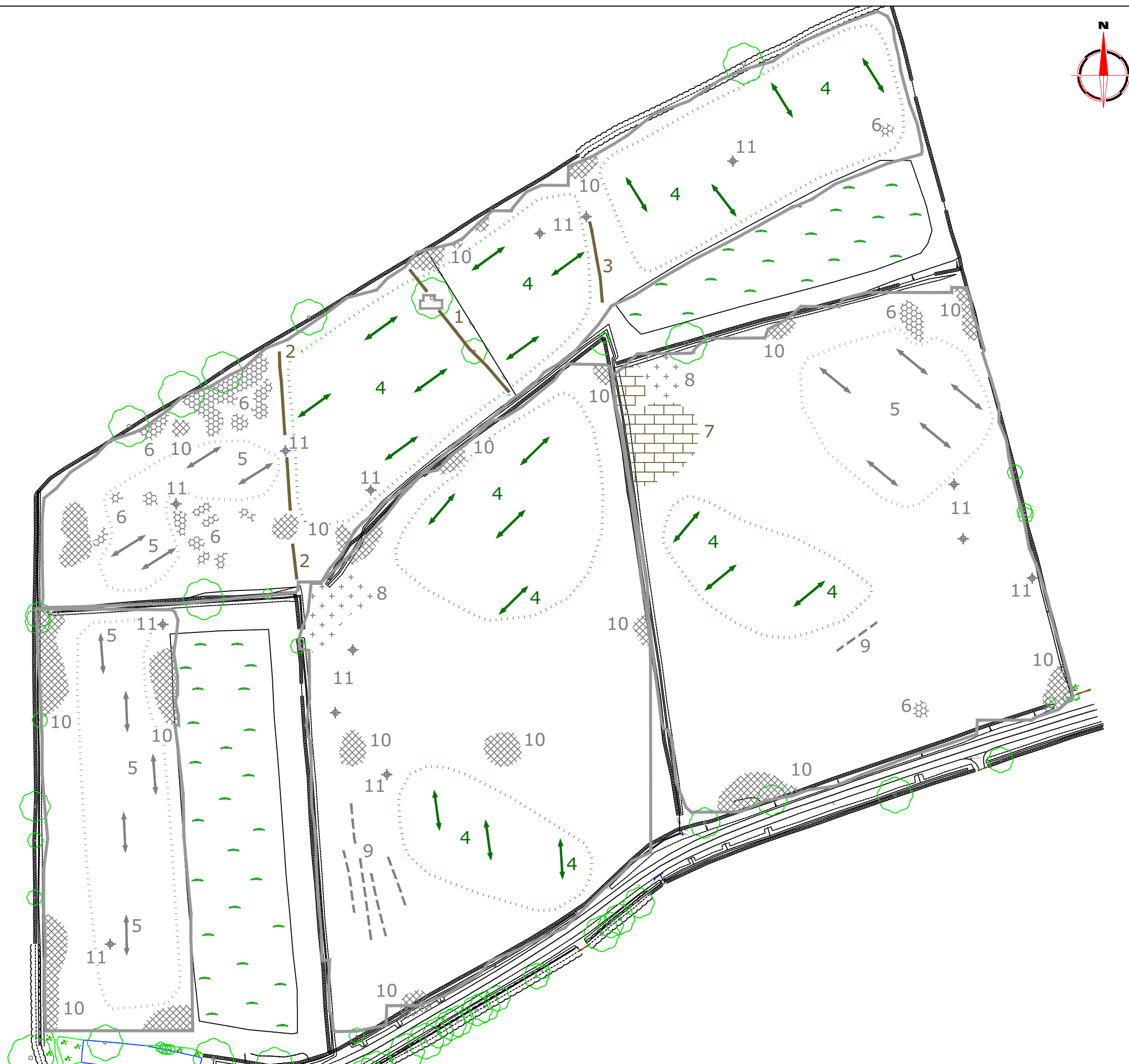














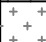







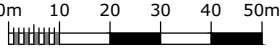


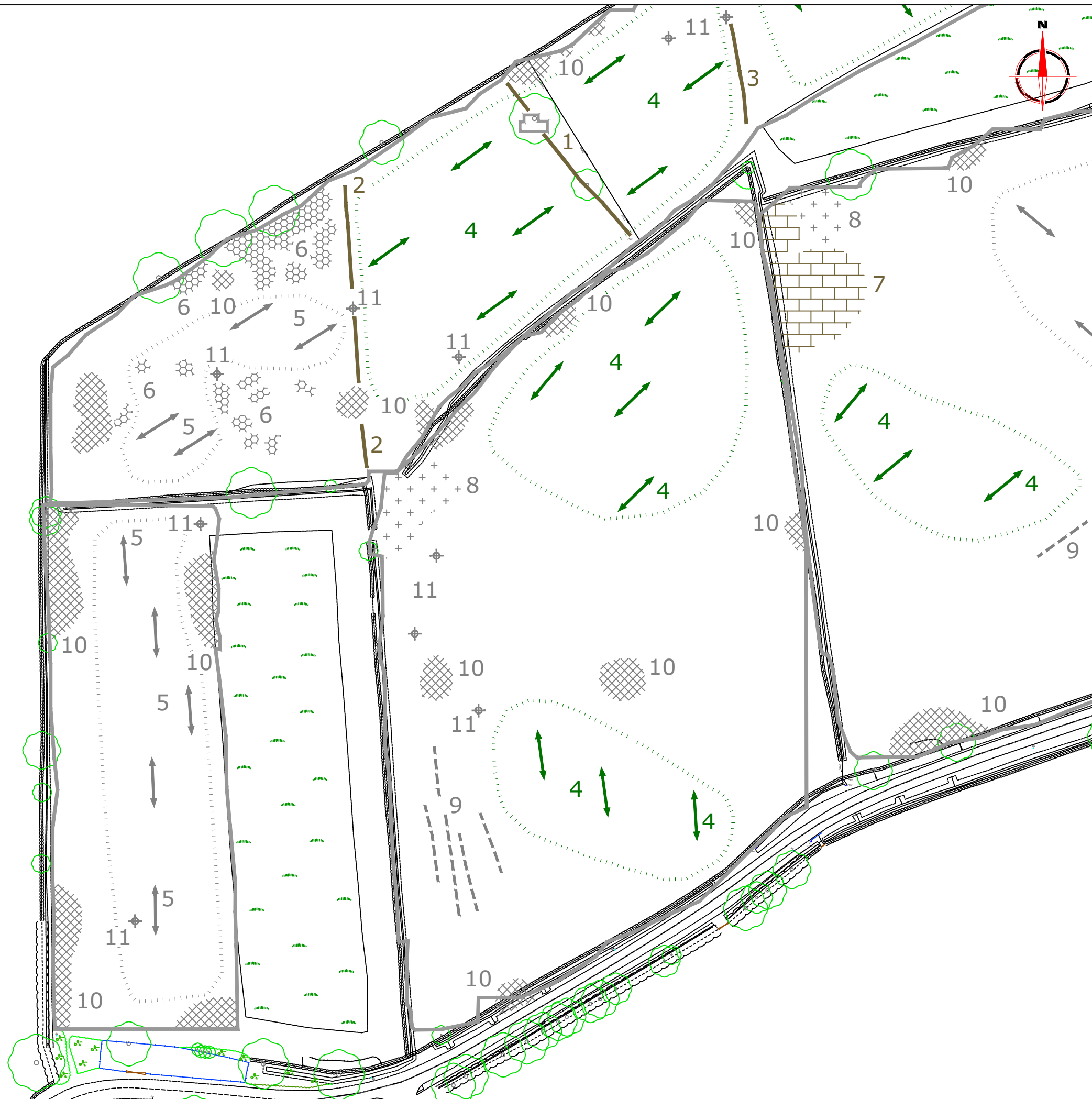
Amendments

Issue No.	Date	Description
-	-	-
-	-	-
© Stratascan Ltd - 2015		
Plotting parameters		
Maximum +2nT (black)		
Minimum -2nT (white)		
<div><div>Zero</div><div>Mean</div><div></div></div>		
-2nT +2nT		
+2nT -2nT		
Client		
UNIVERSITY OF LEICESTER ARCHAEOLOGICAL SERVICES		
Project Title		
Job No. 9112		
GEOPHYSICAL SURVEY - ASHBY ROAD, ULLESTHORPE		
Subject		
PLOT OF MINIMALLY PROCESSED GRADIOMETER DATA - EAST		
<div><div>STRATASCAN™</div><div>GEOPHYSICS FOR ARCHAEOLOGY AND ENGINEERING</div><div>VINEYARD HOUSE UPTON UPON SEVERN WR8 0SA</div><div>T: 01684 592266 E: info@stratascan.co.uk www.stratascan.co.uk</div></div>		
<div><div><div>EUROPEAN GPR ASSOCIATION</div><div>SUMO Survey Services</div></div><div><div>REGISTERED ORGANISATION</div><div>IMS ISO 9001 certified</div><div>UKAS QUALITY MANAGEMENT SYSTEMS 078</div><div>IMS ISO 14001 certified</div><div>UKAS ENVIRONMENTAL MANAGEMENT SYSTEMS 078</div></div><div>SUMO GROUP MEMBER</div></div>		
Scale		
1:1250		
0m 10 20 30 40 50m		
Plot		
A3		
Checked by		
DGE		
Issue No.		
01		
Survey date		
NOV 15		
Drawn by		
RD		
Figure No.		
08		



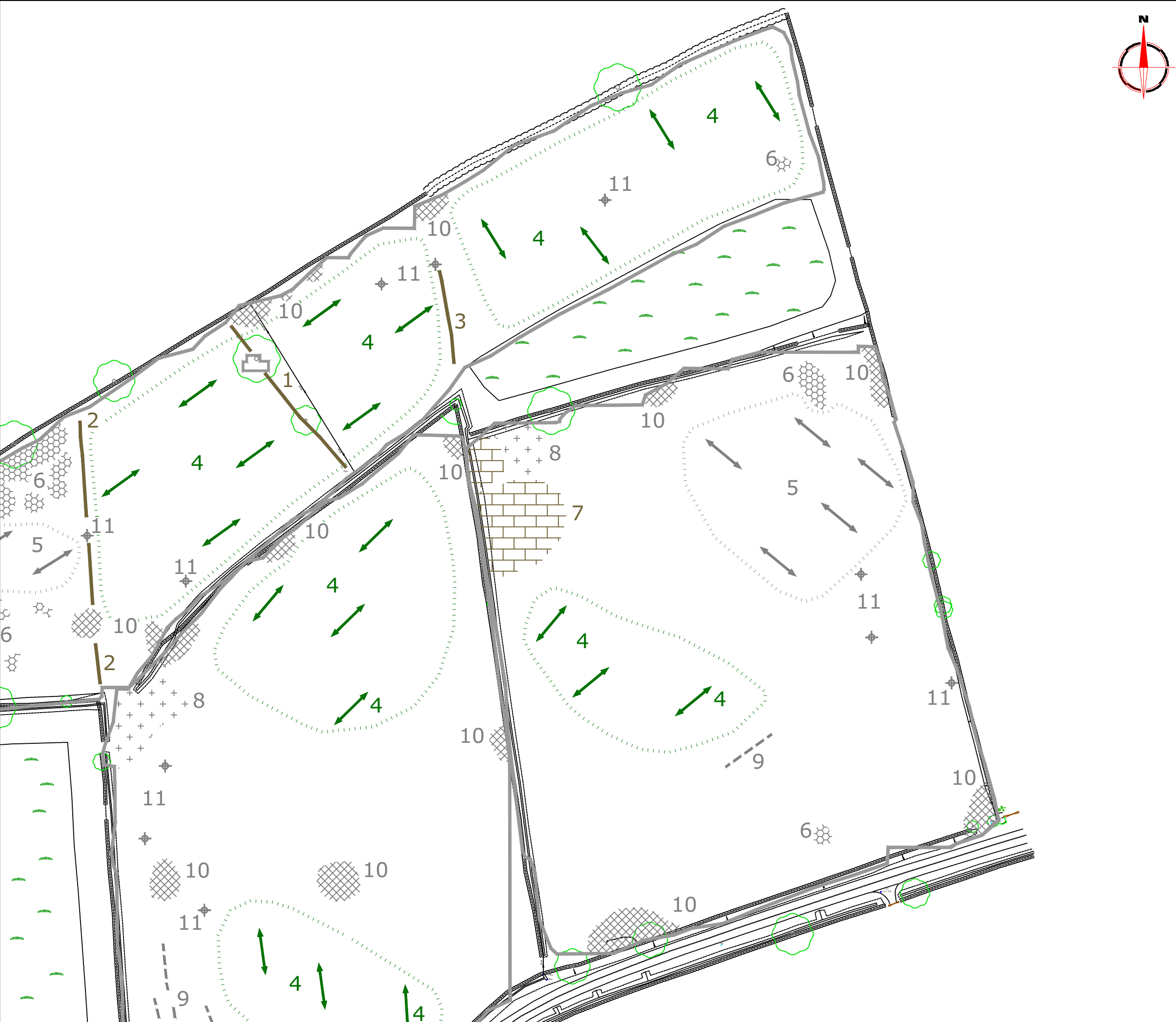


Amendments		
Issue No.	Date	Description
-	-	-
-	-	-
© Stratascan Ltd - 2015		
PROBABLE ARCHAEOLOGY		
	Positive anomaly / weak positive anomaly - probable cut feature of archaeological origin	
	Negative anomaly / weak negative anomaly - probable bank or earthwork of archaeological origin	
POSSIBLE ARCHAEOLOGY		
	Positive anomaly / weak positive anomaly - possible cut feature of archaeological origin	
	Negative anomaly / weak negative anomaly - possible bank or earthwork of archaeological origin	
MEDIEVAL/POST-MEDIEVAL AGRICULTURE		
	Widely spaced curving parallel linear anomalies - probably related to ridge-and-furrow	
	Closely spaced parallel linear anomalies - probably related to agricultural activity such as ploughing	
	Linear anomaly - probably related to a former field boundary not present on available mapping	
	Linear anomaly - related to a former field boundary present on available mapping	
OTHER ANOMALIES		
	Linear anomaly - possibly related to land drain	
	Magnetic disturbance associated with nearby metal object such as service or field boundary	
	Strong magnetic debris - related to former pond present on available mapping	
	Strong magnetic debris - possible disturbed or made ground	
	Scattered magnetic debris	
	Area of amorphous magnetic variation - probable natural (e.g. geological or pedological) origin	
	Magnetic spike - probable ferrous object	
Client		
UNIVERSITY OF LEICESTER ARCHAEOLOGICAL SERVICES		
Project Title		Job No. 9112
GEOPHYSICAL SURVEY - ASHBY ROAD, ULLESTHORPE		
Subject		
ABSTRACTION AND INTERPRETATION OF GRADIOMETER ANOMALIES - OVERVIEW		
 GEOPHYSICS FOR ARCHAEOLOGY AND ENGINEERING  VINEYARD HOUSE T: 01684 592266 UPTON UPON SEVERN E: info@stratascan.co.uk WR8 0SA www.stratascan.co.uk		
  SUMO GROUP MEMBER		
 		
Scale		
1:1500		
		
Plot	Checked by	Issue No.
A3	DGE	01
Survey date	Drawn by	Figure No.
NOV 15	RD	09



Amendments		
Issue No.	Date	Description
-	-	-
-	-	-
© Stratascan Ltd - 2015		
PROBABLE ARCHAEOLOGY		
	Positive anomaly / weak positive anomaly - probable cut feature of archaeological origin	
	Negative anomaly / weak negative anomaly - probable bank or earthwork of archaeological origin	
POSSIBLE ARCHAEOLOGY		
	Positive anomaly / weak positive anomaly - possible cut feature of archaeological origin	
	Negative anomaly / weak negative anomaly - possible bank or earthwork of archaeological origin	
MEDIEVAL/POST-MEDIEVAL AGRICULTURE		
	Widely spaced curving parallel linear anomalies - probably related to ridge-and-furrow	
	Closely spaced parallel linear anomalies - probably related to agricultural activity such as ploughing	
	Linear anomaly - probably related to a former field boundary not present on available mapping	
	Linear anomaly - related to a former field boundary present on available mapping	
OTHER ANOMALIES		
	Linear anomaly - possibly related to land drain	
	Magnetic disturbance associated with nearby metal object such as service or field boundary	
	Strong magnetic debris - related to former pond present on available mapping	
	Strong magnetic debris - possible disturbed or made ground	
	Scattered magnetic debris	
	Area of amorphous magnetic variation - probable natural (e.g. geological or pedological) origin	
	Magnetic spike - probable ferrous object	
Client		
UNIVERSITY OF LEICESTER ARCHAEOLOGICAL SERVICES		
Project Title		Job No. 9112
GEOPHYSICAL SURVEY - ASHBY ROAD, ULLESTHORPE		
Subject		
ABSTRACTION AND INTERPRETATION OF GRADIOMETER ANOMALIES - WEST		
GEOPHYSICS FOR ARCHAEOLOGY AND ENGINEERING		
VINEYARD HOUSE UPTON UPON SEVERN WR8 0SA		T: 01684 592266 E: info@stratascan.co.uk www.stratascan.co.uk
SUMO GROUP MEMBER		
Scale		
1:1250		
Plot	Checked by	Issue No.
A3	DGE	01
Survey date	Drawn by	Figure No.
NOV 15	RD	10





Amendments		
Issue No.	Date	Description
-	-	-
-	-	-
© Stratascan Ltd - 2015		
PROBABLE ARCHAEOLOGY		
	Positive anomaly / weak positive anomaly - probable cut feature of archaeological origin	
	Negative anomaly / weak negative anomaly - probable bank or earthwork of archaeological origin	
POSSIBLE ARCHAEOLOGY		
	Positive anomaly / weak positive anomaly - possible cut feature of archaeological origin	
	Negative anomaly / weak negative anomaly - possible bank or earthwork of archaeological origin	
MEDIEVAL/POST-MEDIEVAL AGRICULTURE		
	Widely spaced curving parallel linear anomalies - probably related to ridge-and-furrow	
	Closely spaced parallel linear anomalies - probably related to agricultural activity such as ploughing	
	Linear anomaly - probably related to a former field boundary not present on available mapping	
	Linear anomaly - related to a former field boundary present on available mapping	
OTHER ANOMALIES		
	Linear anomaly - possibly related to land drain	
	Magnetic disturbance associated with nearby metal object such as service or field boundary	
	Strong magnetic debris - related to former pond present on available mapping	
	Strong magnetic debris - possible disturbed or made ground	
	Scattered magnetic debris	
	Area of amorphous magnetic variation - probable natural (e.g. geological or pedological) origin	
	Magnetic spike - probable ferrous object	
Client		
UNIVERSITY OF LEICESTER ARCHAEOLOGICAL SERVICES		
Project Title		
Job No. 9112		
GEOPHYSICAL SURVEY - ASHBY ROAD, ULLESTHORPE		
Subject		
ABSTRACTION AND INTERPRETATION OF GRADIOMETER ANOMALIES - EAST		
GEOPHYSICS FOR ARCHAEOLOGY AND ENGINEERING		
VINEYARD HOUSE		
T: 01684 592266		
UPTON UPON SEVERN		
E: info@stratascan.co.uk		
WR8 0SA		
www.stratascan.co.uk		
SUMO GROUP MEMBER		
Scale		
1:1250		
Plot		
A3		
Checked by		
DGE		
Issue No.		
01		
Survey date		
NOV 15		
Drawn by		
RD		
Figure No.		
11		

# Your Survey Partner

For a complete and complementary  
range of survey services

*Survey services  
you can rely on*

Archaeological  
As Built Records  
BIM Ready 3D Models  
Boundary Disputes  
CCTV  
Geophysical  
Laser Scanning  
Measured Building  
Pipeline Routes  
Railway  
Retrofit  
Setting Out  
Statutory Plan Collation  
Topographic  
Utility Mapping  
UXO Detection  
Void Detection

## **STRATASCAN LTD**

Vineyard House Upper Hook Road Upton upon Severn  
Worcestershire WR8 0SA United Kingdom

T: 01684 592266 F: 01684 594142

[info@stratascan.co.uk](mailto:info@stratascan.co.uk) [www.stratascan.co.uk](http://www.stratascan.co.uk)

# STRATASCAN™



SUMO  
Group  
Member