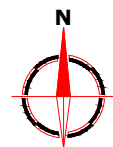
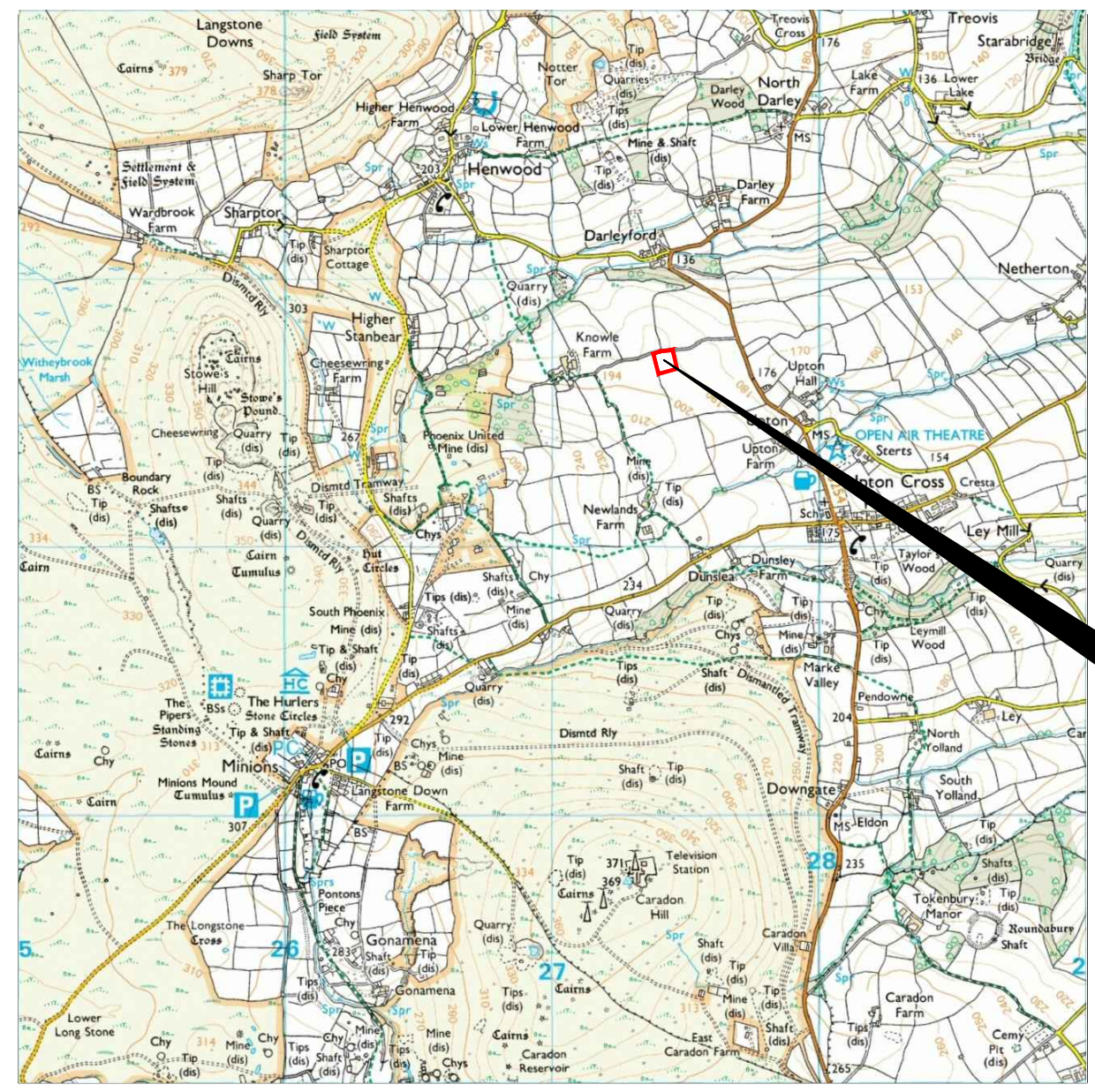


Reproduced from Ordnance Survey's 1:25 000 map of 1998 with the permission of the controller of Her Majesty's Stationery Office. Crown Copyright reserved. Licence No: AL 50125A  
Licencee:  
Stratascan Ltd.  
Vineyard House  
Upper Hook Road  
Upton Upon Severn  
WR8 0SA  
OS 100km square = SX



74  
73  
72  
71  
70



25 26 27 28 29

### Amendments

Issue No.	Date	Description
-	-	-
-	-	-

© Stratascan Ltd - 2014

Site centred on NGR SX 275 726

Client  
**SOUTH WEST ARCHAEOLOGY**

Project Title  
**KNOWLE FARM, UPTON CROSS**

Job No. J6853

Subject  
**LOCATION PLAN OF SURVEY AREA**

**STRATASCAN™**  
GEOPHYSICS FOR ARCHAEOLOGY AND ENGINEERING

VINEYARD HOUSE  
UPTON UPON SEVERN  
WR8 0SA

T: 01684 592266  
E: info@stratascan.co.uk  
www.stratascan.co.uk

**EUROPEAN GPR ASSOCIATION**

**SUMO**  
SUMO GROUP MEMBER

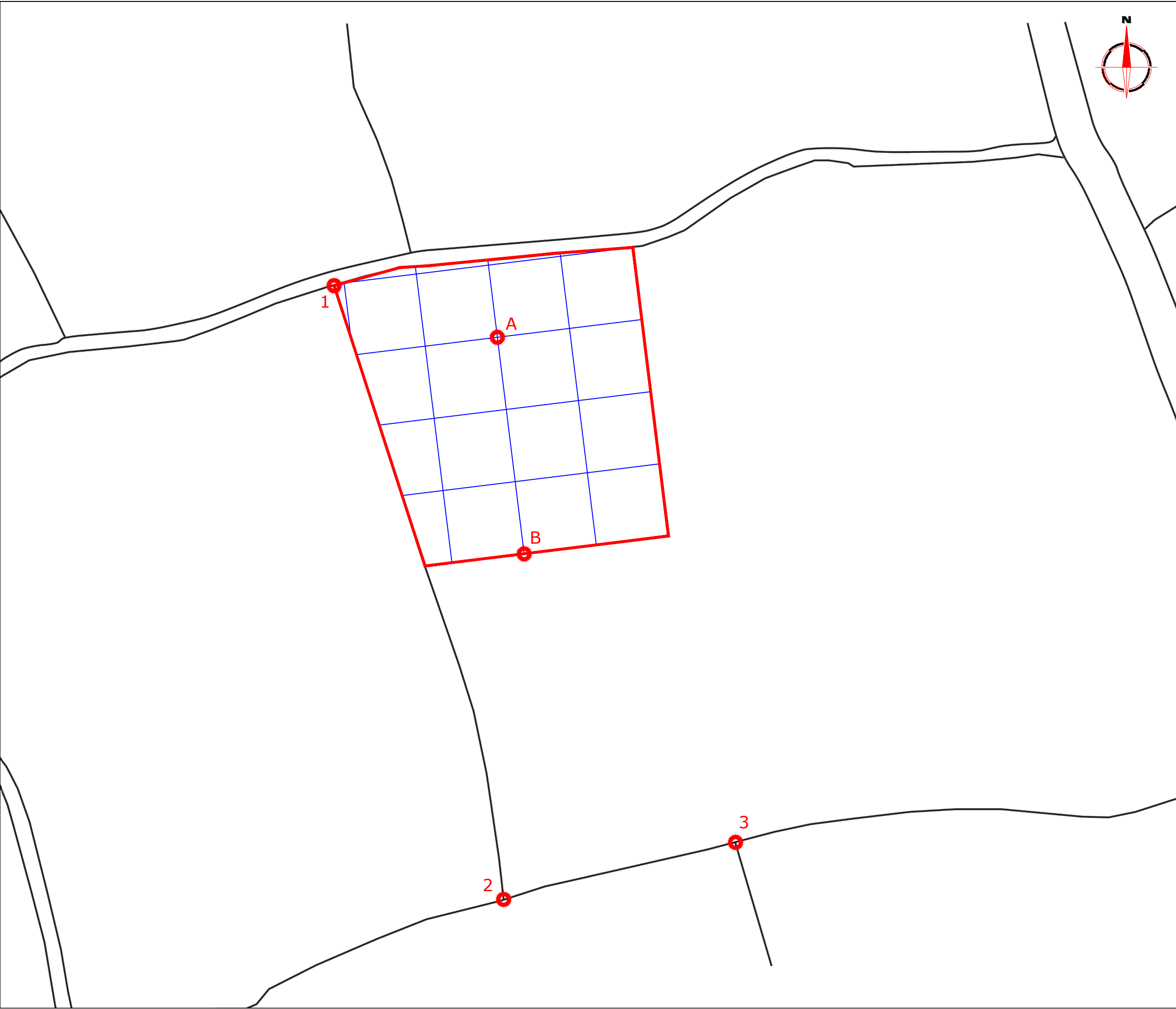
UKAS  
ISO 9001  
certified

UKAS  
ISO 14001  
certified

Scale  
**1:25000**

0m 500 1000m

Plot <b>A3</b>	Checked by <b>DGE</b>	Issue No. <b>01</b>
Survey date <b>MAY 14</b>	Drawn by <b>TR</b>	Figure No. <b>01</b>



Amendments

Issue No.	Date	Description
-	-	-
-	-	-

© Stratascan Ltd - 2014

REFERENCING INFORMATION

A-B	90m	A-1	70.65m	A-2	231.97m
A-3	230.44m	B-1	135.61m	B-2	142.89m
B-3	147.64m				

A-B	Base line
1,2,3	Referencing points

Client

SOUTH WEST ARCHAEOLOGY

Project Title

Job No.

J6853

KNOWLE FARM, UPTON CROSS

Subject

LOCATION OF SURVEY GRIDS AND REFERENCING

STRATASCAN™

GEOPHYSICS FOR ARCHAEOLOGY AND ENGINEERING

VINEYARD HOUSE  
UPTON UPON SEVERN  
WR8 0SA

T: 01684 592266  
E: info@stratascan.co.uk  
www.stratascan.co.uk

EUROPEAN GPR ASSOCIATION

SUMOSURVEYS

SUMO GROUP MEMBER

REGISTERED ORGANISATION

ims ISO 9001 certified

ims ISO 14001 certified

Scale

1:1500

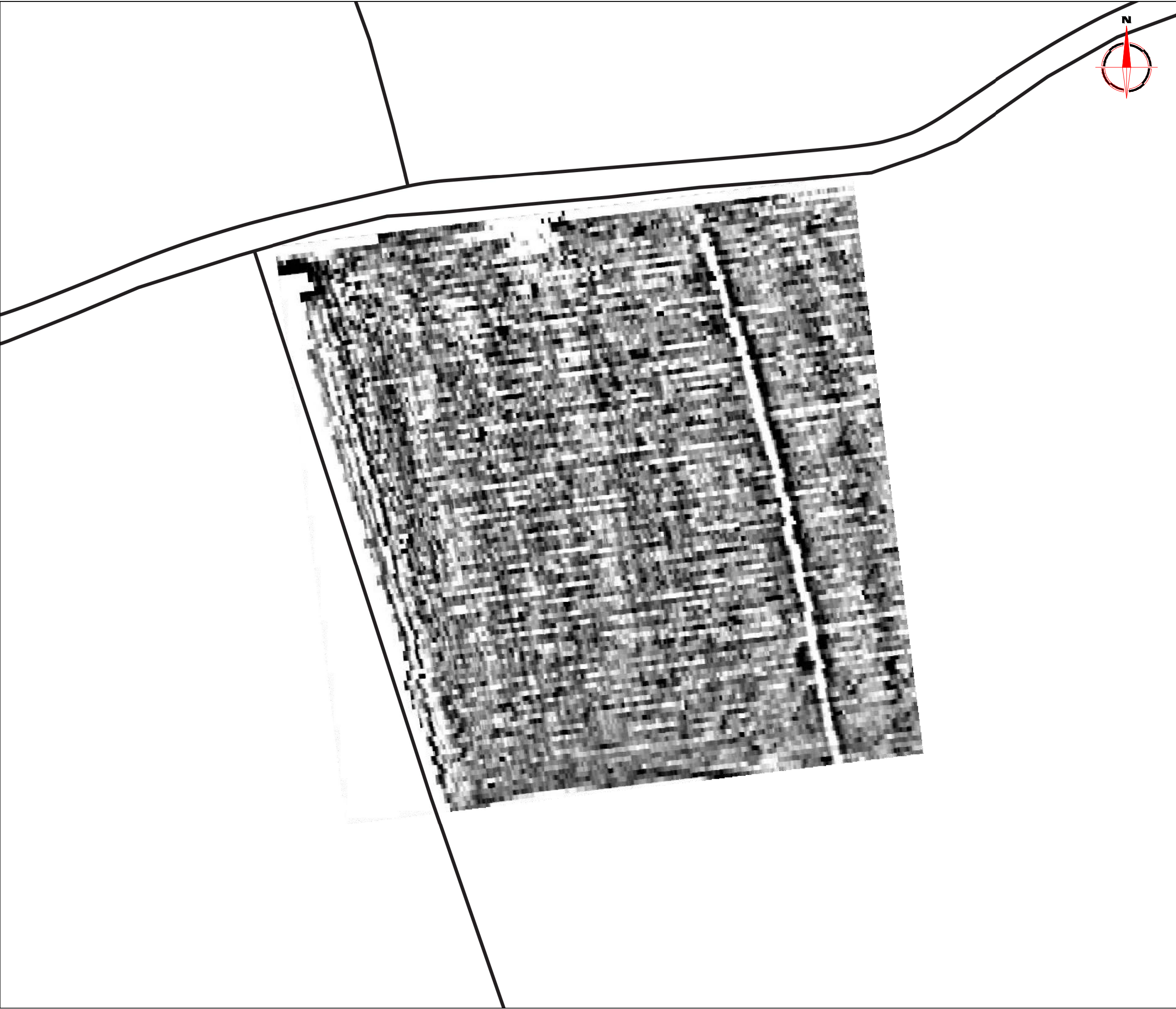
0m 10 20 30 40 50m

Plot	A3	Checked by	DGE	Issue No.	01
Survey date	MAY 14	Drawn by	TR	Figure No.	02





Amendments		
Issue No.	Date	Description
-	-	-
-	-	-
© Stratascan Ltd - 2014		
Plotting parameters		<div><div></div><div>+100nT</div><div>+10nT</div><div>-10nT</div><div>-100nT</div></div>
Maximum +100nT (red)		
Minimum -100nT (blue)		
Client		
SOUTH WEST ARCHAEOLOGY		
Project Title		Job No. J6853
KNOWLE FARM, UPTON CROSS		
Subject		
COLOUR PLOT OF GRADIOMETER DATA SHOWING EXTREME VALUES		
<div><div>STRATASCAN™</div><div>GEOPHYSICS FOR ARCHAEOLOGY AND ENGINEERING</div><div>VINEYARD HOUSE UPTON UPON SEVERN WR8 0SA</div><div>T: 01684 592266 E: info@stratascan.co.uk www.stratascan.co.uk</div></div>		
<div><div><div>EUROPEAN GPR ASSOCIATION</div><div>SUMO</div></div><div><div>REGISTERED ORGANISATION</div><div>SUMO GROUP MEMBER</div></div><div><div>ims ISO 9001 certified</div><div>UKAS ISO 9001</div></div><div><div>ims ISO 14001 certified</div><div>UKAS ISO 14001</div></div></div>		
Scale 1:750 <div><div>0m</div><div>5</div><div>15</div><div>30m</div></div>		
Plot	Checked by	Issue No.
A3	DGE	01
Survey date	Drawn by	Figure No.
MAY 14	TR	03



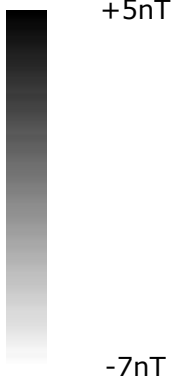
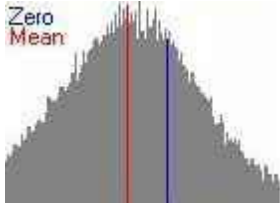
Amendments

Issue No.	Date	Description
-	-	-
-	-	-

© Stratascan Ltd - 2014

Plotting parameters

Maximum +5nT (black)  
Minimum -7nT (white)



Client

SOUTH WEST ARCHAEOLOGY


Project Title

Job No. J6853

KNOWLE FARM, UPTON CROSS


Subject


PLOT OF MINIMALLY PROCESSED GRADIOMETER DATA


**STRATASCAN**<sup>TM</sup>  
GEOPHYSICS FOR ARCHAEOLOGY  
AND ENGINEERING


VINEYARD HOUSE  
UPTON UPON SEVERN  
WR8 0SA

T: 01684 592266  
E: info@stratascan.co.uk  
www.stratascan.co.uk

**EUROPEAN  
GPR  
ASSOCIATION**

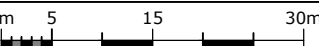
**SUMO**  
SUMO GROUP  
MEMBER

**REGISTERED  
ORGANISATION**

**UKAS  
ISO 14001  
certified**

Scale

1:750



Plot

A3

Checked by

DGE

Issue No.

01

Survey date

MAY 14

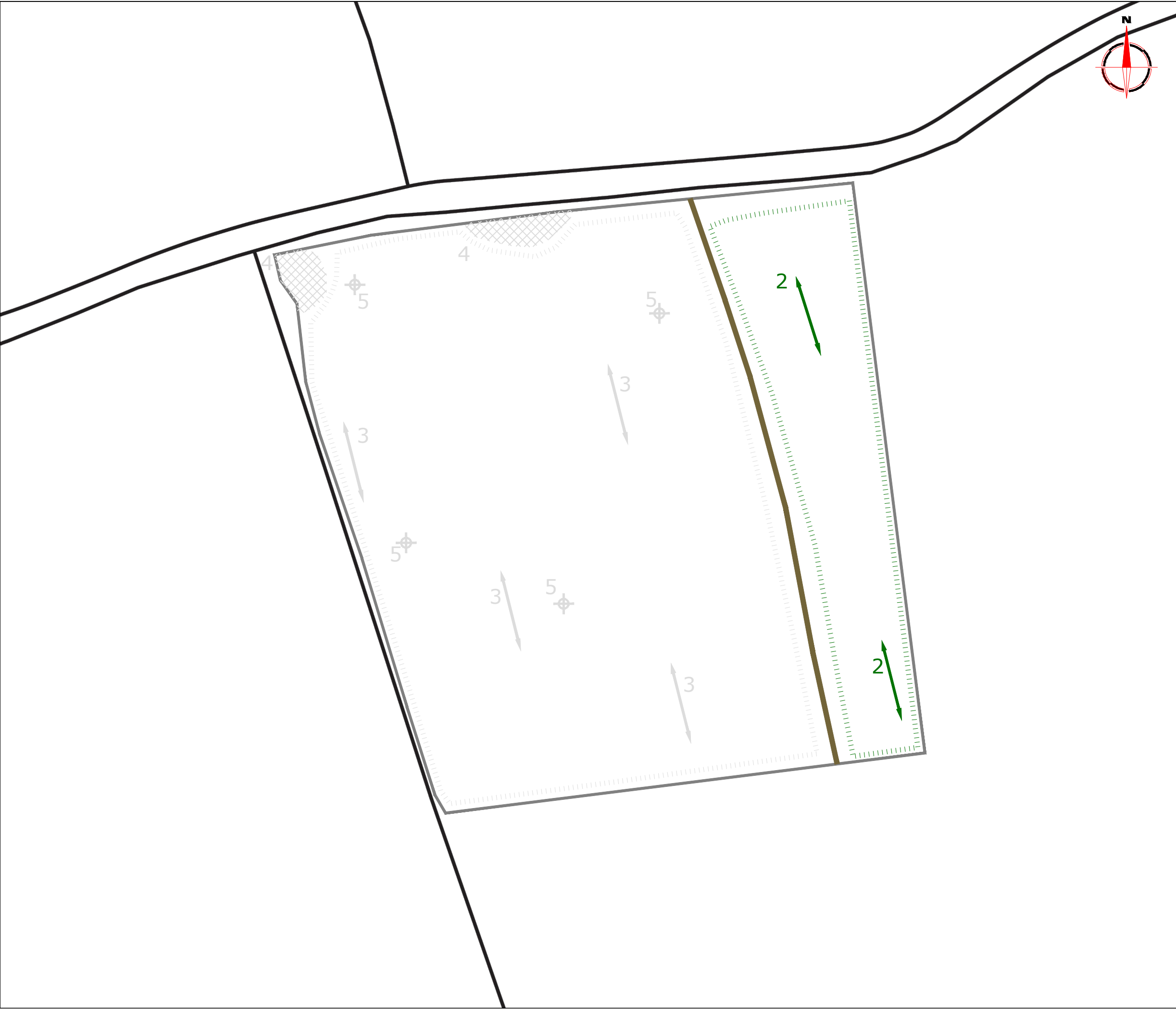
Drawn by

TR

Figure No.

04





### Amendments

Issue No.	Date	Description
-	-	-
-	-	-

© Stratascan Ltd - 2014

### KEY

#### PROBABLE ARCHAEOLOGY

	Positive anomaly / weak positive anomaly - probable cut feature of archaeological origin
	Negative anomaly / weak negative anomaly - probable bank or earthwork of archaeological origin
	Linear anomaly - probable former field boundary not present on available mapping
	Widely spaced curving parallel linear anomalies - probably related to ridge-and-furrow

#### POSSIBLE ARCHAEOLOGY

	Positive anomaly / weak positive anomaly - possible cut feature of archaeological origin
	Negative anomaly / weak negative anomaly - possible bank or earthwork of archaeological origin

#### OTHER ANOMALIES

	Closely spaced parallel linear anomalies - probably related to agricultural activity such as ploughing
	Linear anomaly - probably related to pipe, cable or other modern service
	Linear anomaly - possibly related to land drain
	Magnetic disturbance associated with nearby metal object such as service or field boundary
	Strong magnetic debris - possible disturbed or made ground
	Scattered magnetic debris
	Area of amorphous magnetic variation - probable natural (e.g. geological or pedological) origin
	Magnetic spike - probable ferrous object

Client

**SOUTH WEST ARCHAEOLOGY**

Project Title

**KNOWLE FARM, UPTON CROSS**

Job No.

**J6853**

Subject

**ABSTRACTION AND INTERPRETATION OF GRADIOMETER ANOMALIES**

**STRATASCAN™**  
GEOPHYSICS FOR ARCHAEOLOGY  
AND ENGINEERING

VINEYARD HOUSE  
UPTON UPON SEVERN  
WR8 0SA

T: 01684 592266  
E: info@stratascan.co.uk  
www.stratascan.co.uk

SUMO GROUP MEMBER

Scale

**1:750**

0m 5 15 30m

Plot	Checked by	Issue No.
<b>A3</b>	<b>DGE</b>	<b>01</b>
Survey date	Drawn by	Figure No.
<b>MAY 14</b>	<b>TR</b>	<b>05</b>