

GEOPHYSICAL SURVEY REPORT

# STRATASCAN™



Project name:

**Hounsome Fields, Basingstoke, Hampshire**

Client:

**Orion Heritage**

**November 2015**

Job ref:

**J9000**

Report author:

**Thomas Richardson MSc ACIfA**

# **GEOPHYSICAL SURVEY REPORT**

Project name:

**Hounsome Fields, Basingstoke, Hampshire**

Client:

**Orion Heritage**



Job ref:

**J9000**

Field team:

**Robert Knight** BA (Hons), **Thomas Hynd** BSc (Hons),  
**Sam Wood, Jack Larner**

Techniques:

**Detailed magnetic survey –  
Gradiometry**

Project manager:

**Simon Haddrell** BEng(Hons) AMBCS PCIfA

Survey date:

**9th-13th & 18th-19th November  
2015**

Report written By:

**Thomas Richardson** MSc ACIfA

Site centred at:

**SU 588 476**

CAD illustrations by:

**Thomas Richardson** MSc ACIfA

Post code:

**RG23 7LU**

Checked by:

**David Elks** MSc ACIfA

## TABLE OF CONTENTS

<b>LIST OF FIGURES.....</b>	<b>2</b>
<b>1 SUMMARY OF RESULTS .....</b>	<b>3</b>
<b>2 INTRODUCTION .....</b>	<b>3</b>
2.1 Background synopsis .....	3
2.2 Site location .....	3
2.3 Description of site .....	3
2.4 Geology and soils .....	3
2.5 Site history and archaeological potential .....	4
2.6 Survey objectives .....	4
2.7 Survey methods .....	4
2.8 Processing, presentation and interpretation of results .....	4
2.8.1 Processing .....	4
2.8.2 Presentation of results and interpretation.....	5
<b>3 RESULTS.....</b>	<b>5</b>
3.1 Probable Archaeology .....	5
3.2 Possible Archaeology .....	5
3.3 Medieval/Post-Medieval Agriculture .....	6
3.4 Other Anomalies .....	6
<b>4 DATA APPRAISAL &amp; CONFIDENCE ASSESSMENT .....</b>	<b>7</b>
<b>5 CONCLUSION .....</b>	<b>7</b>
<b>6 REFERENCES .....</b>	<b>8</b>
<b>APPENDIX A – METHODOLOGY &amp; SURVEY EQUIPMENT .....</b>	<b>9</b>
<b>APPENDIX B – BASIC PRINCIPLES OF MAGNETIC SURVEY .....</b>	<b>10</b>
<b>APPENDIX C – GLOSSARY OF MAGNETIC ANOMALIES .....</b>	<b>11</b>

## LIST OF FIGURES

Figure 01	1:2000	Site location, survey area & referencing
Figure 02	1:2000	Colour plot of gradiometer data showing extreme values – overview
Figure 03	1:1250	Colour plot of gradiometer data showing extreme values – north
Figure 04	1:1250	Colour plot of gradiometer data showing extreme values – south
Figure 05	1:2000	Plot of minimally processed gradiometer data – overview
Figure 06	1:1250	Plot of minimally processed gradiometer data – north
Figure 07	1:1250	Plot of minimally processed gradiometer data – south
Figure 08	1:2000	Abstraction and interpretation of gradiometer anomalies – overview
Figure 09	1:1250	Abstraction and interpretation of gradiometer anomalies – north
Figure 10	1:1250	Abstraction and interpretation of gradiometer anomalies – south

## 1 SUMMARY OF RESULTS

A detailed gradiometry survey was conducted over approximately 32 hectares of agricultural land under crop. The survey has identified a number of ditches and enclosures across the north of the site most likely an extension of an Iron Age/Romano British settlement identified by excavation to the immediate north of the survey area. Two linear anomalies may also be evidence of further archaeological activity, however these could equally relate to modern agricultural activity. The former field boundary and areas of modern ploughing seen across the site suggest that the area has a recent agricultural past. The remaining anomalies are natural or modern in origin, relating to underground services, a disused chalk pit, ferrous objects, and fencing.

## 2 INTRODUCTION

### 2.1 *Background synopsis*

Stratascan were commissioned to undertake a geophysical survey of an area outlined for residential development. This survey forms part of an archaeological investigation being undertaken by Orion Heritage.

### 2.2 *Site location*

The site is located to the north of Winchester Road, Basingstoke, Hampshire at OS ref. SU 588 476.

### 2.3 *Description of site*

The survey area is 39 hectares, however areas of woodland, overgrown vegetation, and crop reduced the surveyable area to approximately 32 hectares of agricultural land over three fields. The site lies on a north-west facing slope, becoming flatter at the northern end of the area.

### 2.4 *Geology and soils*

The underlying geology is Lewes Nodular Chalk Formation, Seaford Chalk Formation, and Newhaven Chalk Formation (undifferentiated) – Chalk (British Geological Survey website). There is no recorded drift geology for the majority of the site, with a small area of Clay-with-Flints Formation – Clay, Silt, Sand and Gravel in the north (British Geological Survey website).

The overlying soils across the majority of the site are known as Carstens, which are typical paleo-argillic brown earths. These consist of fine silty over clayey, clayey, and fine silty soils, often very flinty. An area of Charity 2, which are typical argillic brown earths, is present in the southern corner of the site. These consist of flinty, fine, silty soils (Soil Survey of England and Wales, Sheet 6 South East England).

## 2.5 **Site history and archaeological potential**

A desk based assessment of the site has identified a high potential for prehistoric and Roman activity in the area. The surrounding area was densely populated during the Iron Age, with an Iron Age/Romano-British settlement identified immediately north of the survey area (HER numbers 63861 and 63867). Bronze Age barrows (HER numbers 63667, 39621, 39622, 63859, and 63860) can also be seen, suggesting contemporary settlement nearby. Roman activity is evidenced by a Roman road (HER number 39596) running along the western boundary, as well as two villas (HER numbers 18704, 37865, and 63606) to the north-east of the site (one of which is c.250m from the site), and a cemetery (HER number 42356) c.450m to the east (Orion Heritage 2015).

## 2.6 **Survey objectives**

The objective of the survey was to locate any features of possible archaeological origin in order that they may be assessed prior to development.

## 2.7 **Survey methods**

This report and all fieldwork have been conducted in accordance with both the English Heritage guidelines outlined in the document: *Geophysical Survey in Archaeological Field Evaluation, 2008* and with the Chartered Institute for Archaeologists document *Standard and Guidance for Archaeological Geophysical Survey*.

Given the potential for prehistoric and Roman activity, detailed magnetic survey (gradiometry) was used as an efficient and effective method of locating archaeological anomalies. More information regarding this technique is included in Appendix A.

## 2.8 **Processing, presentation and interpretation of results**

### 2.8.1 *Processing*

Processing is performed using specialist software. This can emphasise various aspects contained within the data but which are often not easily seen in the raw data. Basic processing of the magnetic data involves 'flattening' the background levels with respect to adjacent traverses and adjacent grids. Once the basic processing has flattened the background it is then possible to carry out further processing which may include low pass filtering to reduce 'noise' in the data and hence emphasise the archaeological or man-made anomalies.

The following schedule shows the basic processing carried out on all minimally processed gradiometer data used in this report:

1. *Destripe* (Removes striping effects caused by zero-point discrepancies between different sensors and walking directions)
2. *Destagger* (Removes zigzag effects caused by inconsistent walking speeds on sloping, uneven or overgrown terrain)

### 2.8.2 Presentation of results and interpretation

The presentation of the data for each site involves a print-out of the minimally processed data both as a greyscale plot and a colour plot showing extreme magnetic values. Magnetic anomalies have been identified and plotted onto the 'Abstraction and Interpretation of Anomalies' drawing for the site.

## 3 RESULTS

The detailed magnetic gradiometer survey conducted at Hounsome Fields has identified a number of anomalies that have been characterised as being either of a *probable* or *possible* archaeological origin.

The difference between *probable* and *possible* archaeological origin is a confidence rating. Features identified within the dataset that form recognisable archaeological patterns or seem to be related to a deliberate historical act have been interpreted as being of a probable archaeological origin.

Features of possible archaeological origin tend to be more amorphous anomalies which may have similar magnetic attributes in terms of strength or polarity but are difficult to classify as being archaeological or natural.

The following list of numbered anomalies refers to numerical labels on the interpretation plots.

### 3.1 Probable Archaeology

- 1** An area of linear and curvilinear positive anomalies in the north-west of the site. These are indicative of former ditched enclosures, and are likely related to the Iron Age/Romano-British settlement to the immediate north of the survey area (HER numbers 63861 and 63867). This activity appears to extend into Anomaly 2.
- 2** An area of linear and sub-rectilinear positive anomalies in the north of the site. These are indicative of former ditched enclosures, and are likely related to the Iron Age/Romano-British settlement to the immediate north of the survey area (HER numbers 63861 and 63867). This is probably an extension of the activity seen in Anomaly 1.

### 3.2 Possible Archaeology

- 3** Two positive linear anomalies in the south and north-east of the site. These are indicative of former cut features, and may be archaeological or agricultural in origin.

- 4 A small discrete positive anomaly in the north-west of the site. This is indicative of a small former cut feature, such as a backfilled pit, and may relate to the enclosures seen in Anomaly 1. However, given the large amount of natural pitting across the site its origin cannot be determined with any certainty.

### 3.3 *Medieval/Post-Medieval Agriculture*

- 5 An alignment of magnetic 'spikes' in the south of the site. These are related to a former field boundary visible on available OS mapping in 1961. Anomaly 6 is an extension of this feature.
- 6 A small linear anomaly in the south of the site. This is related to a former field boundary visible on available OS mapping in 1961. This is associated with the 'spikes' seen in Anomaly 5.
- 7 Areas of closely spaced, parallel linear anomalies across the site. These are indicative of modern agricultural activity, such as ploughing.

### 3.4 *Other Anomalies*

- 8 A number of high amplitude, bipolar linear anomalies across the site. These are indicative of underground services, such as pipes or cables.
- 9 Areas of magnetic variation across the site. These anomalies are likely to be geological or pedological in nature, and are to be expected with chalk bedrocks. A large amount of natural pitting can be seen across the site, with only the larger and stronger anomalies marked on the interpretation drawings.
- 10 An area of high amplitude dipolar responses. This is indicative of modern made ground related to a former chalk pit present on available OS mapping.
- 11 Areas of magnetic disturbance are the result of substantial nearby ferrous metal objects such as fences and underground services. These effects can mask weaker archaeological anomalies, but on this site have not affected a significant proportion of the area.
- 12 A number of magnetic 'spikes' (strong focussed values with associated antipolar response) indicate ferrous metal objects. These are likely to be modern rubbish.



## 4 DATA APPRAISAL & CONFIDENCE ASSESSMENT

Chalk geologies, such as those at Hounsome Fields, generally give good responses to magnetic survey. The detection of Iron Age/Romano-British settlement activity in the north of the site suggests that the survey has been somewhat successful. However, these anomalies are weak with little contrast between them and the background response of the site. This would indicate that the possibility of weaker archaeological anomalies not being detected cannot be completely discounted.

## 5 CONCLUSION

The survey at Hounsome Fields has identified a number of probable and possible archaeological anomalies. A number of ditches and enclosures across the north of the site are most likely an extension of an Iron Age/Romano British settlement identified by excavation to the immediate north of the survey area. A pit feature, which may relate to the settlement activity, has also been detected, however the large amount of natural pitting across the site means its exact origin cannot be determined. Two linear anomalies may also be evidence of further archaeological activity, however these could equally relate to modern agricultural activity. The former field boundary and areas of modern ploughing seen across the site suggest that the area has a recent agricultural past. The remaining anomalies are modern or natural in origin. The modern anomalies relate to underground services, a disused chalk pit, ferrous objects, and fencing.

## 6 REFERENCES

British Geological Survey South Sheet, 1977. *Geological Survey Ten Mile Map, South Sheet First Edition (Quaternary)*. Institute of Geological Sciences.

British Geological Survey, 2001. *Geological Survey Ten Mile Map, South Sheet, Fourth Edition (Solid)*. British Geological Society.

British Geological Survey, n.d., *website*:  
(<http://www.bgs.ac.uk/opengeoscience/home.html?Accordion1=1#maps>) Geology of Britain viewer.

Chartered Institute For Archaeologists. *Standard and Guidance for Archaeological Geophysical Survey*.  
<http://www.archaeologists.net/sites/default/files/nodefiles/Geophysics2010.pdf>

English Heritage, 2008. *Geophysical Survey in Archaeological Field Evaluation*.

Orion Heritage, 2015. *Hounsome Fields, Winchester Road, Basingstoke – Heritage Desk Based Assessment*

Soil Survey of England and Wales, 1983. *Soils of England and Wales, Sheet 6 South East England*.

## APPENDIX A – METHODOLOGY & SURVEY EQUIPMENT

### ***Grid locations***

The location of the survey grids has been plotted together with the referencing information. Grids were set out using a Leica 705auto Total Station and referenced to suitable topographic features around the perimeter of the site or a Leica Smart Rover RTK GPS.

An RTK GPS (Real-time Kinematic Global Positioning System) can locate a point on the ground to a far greater accuracy than a standard GPS unit. A standard GPS suffers from errors created by satellite orbit errors, clock errors and atmospheric interference, resulting in an accuracy of 5m-10m. An RTK system uses a single base station receiver and a number of mobile units. The base station re-broadcasts the phase of the carrier it measured, and the mobile units compare their own phase measurements with those they received from the base station. A SmartNet RTK GPS uses Ordnance Survey's network of over 100 fixed base stations to give an accuracy of around 0.01m.

### ***Survey equipment and gradiometer configuration***

Although the changes in the magnetic field resulting from differing features in the soil are usually weak, changes as small as 0.2 nanoTeslas (nT) in an overall field strength of 48,000nT, can be accurately detected using an appropriate instrument.

The mapping of the anomaly in a systematic manner will allow an estimate of the type of material present beneath the surface. Strong magnetic anomalies will be generated by buried iron-based objects or by kilns or hearths. More subtle anomalies such as pits and ditches can be seen if they contain more humic material which is normally rich in magnetic iron oxides when compared with the subsoil.

To illustrate this point, the cutting and subsequent silting or backfilling of a ditch may result in a larger volume of weakly magnetic material being accumulated in the trench compared to the undisturbed subsoil. A weak magnetic anomaly should therefore appear in plan along the line of the ditch.

The magnetic survey was carried out using a dual sensor Grad601-2 Magnetic Gradiometer manufactured by Bartington Instruments Ltd. The instrument consists of two fluxgates very accurately aligned to nullify the effects of the Earth's magnetic field. Readings relate to the difference in localised magnetic anomalies compared with the general magnetic background. The Grad601-2 consists of two high stability fluxgate gradiometers suspended on a single frame. Each gradiometer has a 1m separation between the sensing elements so enhancing the response to weak anomalies.

### ***Sampling interval***

Readings were taken at 0.25m centres along traverses 1m apart. This equates to 3600 sampling points in a full 30m x 30m grid.

### ***Depth of scan and resolution***

The Grad 601-2 has a typical depth of penetration of 0.5m to 1.0m, though strongly magnetic objects may be visible at greater depths. The collection of data at 0.25m centres provides an optimum methodology for the task balancing cost and time with resolution.

### ***Data capture***

The readings are logged consecutively into the data logger which in turn is daily down-loaded into a portable computer whilst on site. At the end of each site survey, data is transferred to the office for processing and presentation.

## APPENDIX B – BASIC PRINCIPLES OF MAGNETIC SURVEY

Detailed magnetic survey can be used to effectively define areas of past human activity by mapping spatial variation and contrast in the magnetic properties of soil, subsoil and bedrock.

Weakly magnetic iron minerals are always present within the soil and areas of enhancement relate to increases in *magnetic susceptibility* and permanently magnetised *thermoremanent* material.

Magnetic susceptibility relates to the induced magnetism of a material when in the presence of a magnetic field. This magnetism can be considered as effectively permanent as it exists within the Earth's magnetic field. Magnetic susceptibility can become enhanced due to burning and complex biological or fermentation processes.

Thermoremanence is a permanent magnetism acquired by iron minerals that, after heating to a specific temperature known as the Curie Point, are effectively demagnetised followed by re-magnetisation by the Earth's magnetic field on cooling. Thermoremanent archaeological features can include hearths and kilns and material such as brick and tile may be magnetised through the same process.

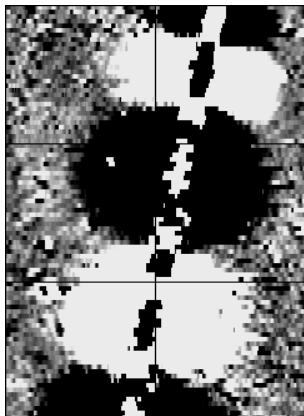
Silting and deliberate infilling of ditches and pits with magnetically enhanced soil creates a relative contrast against the much lower levels of magnetism within the subsoil into which the feature is cut. Systematic mapping of magnetic anomalies will produce linear and discrete areas of enhancement allowing assessment and characterisation of subsurface features. Material such as subsoil and non-magnetic bedrock used to create former earthworks and walls may be mapped as areas of lower enhancement compared to surrounding soils.

Magnetic survey is carried out using a fluxgate gradiometer which is a passive instrument consisting of two sensors mounted vertically 1m apart. The instrument is carried about 30cm above the ground surface and the top sensor measures the Earth's magnetic field whilst the lower sensor measures the same field but is also more affected by any localised buried field. The difference between the two sensors will relate to the strength of a magnetic field created by a buried feature, if no field is present the difference will be close to zero as the magnetic field measured by both sensors will be the same.

Factors affecting the magnetic survey may include soil type, local geology, previous human activity, disturbance from modern services etc.

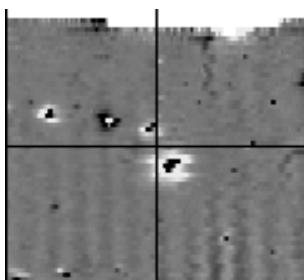
## APPENDIX C – GLOSSARY OF MAGNETIC ANOMALIES

### Bipolar



A bipolar anomaly is one that is composed of both a positive response and a negative response. It can be made up of any number of positive responses and negative responses. For example a pipeline consisting of alternating positive and negative anomalies is said to be bipolar. See also dipolar which has only one area of each polarity. The interpretation of the anomaly will depend on the magnitude of the magnetic field strength. A weak response may be caused by a clay field drain while a strong response will probably be caused by a metallic service.

### Dipolar

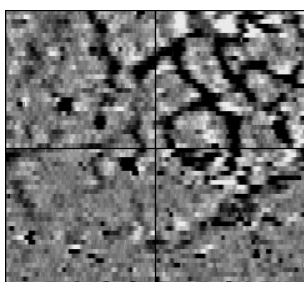


This consists of a single positive anomaly with an associated negative response. There should be no separation between the two polarities of response. These responses will be created by a single feature. The interpretation of the anomaly will depend on the magnitude of the magnetic measurements. A very strong anomaly is likely to be caused by a ferrous object.

### Positive anomaly with associated negative response

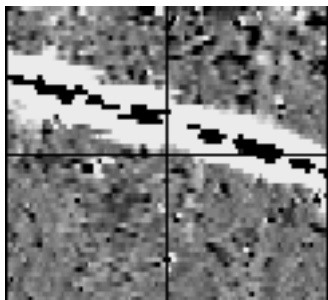
See bipolar and dipolar.

### Positive linear



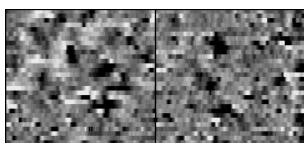
A linear response which is entirely positive in polarity. These are usually related to in-filled cut features where the fill material is magnetically enhanced compared to the surrounding matrix. They can be caused by ditches of an archaeological origin, but also former field boundaries, ploughing activity and some may even have a natural origin.

### Positive linear anomaly with associated negative response



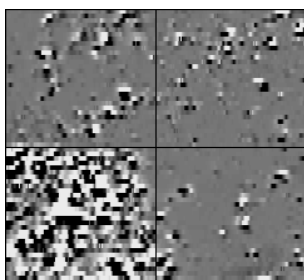
A positive linear anomaly which has a negative anomaly located adjacently. This will be caused by a single feature. In the example shown this is likely to be a single length of wire/cable probably relating to a modern service. Magnetically weaker responses may relate to earthwork style features and field boundaries.

### Positive point/area



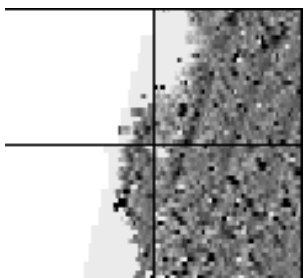
These are generally spatially small responses, perhaps covering just 3 or 4 reading nodes. They are entirely positive in polarity. Similar to positive linear anomalies they are generally caused by in-filled cut features. These include pits of an archaeological origin, possible tree bowls or other naturally occurring depressions in the ground.

### Magnetic debris



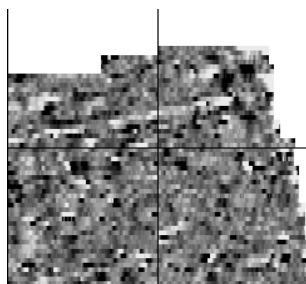
Magnetic debris consists of numerous dipolar responses spread over an area. If the amplitude of response is low ( $\pm 3nT$ ) then the origin is likely to represent general ground disturbance with no clear cause, it may be related to something as simple as an area of dug or mixed earth. A stronger anomaly ( $\pm 250nT$ ) is more indicative of a spread of ferrous debris. Moderately strong anomalies may be the result of a spread of thermoremanent material such as bricks or ash.

### Magnetic disturbance



Magnetic disturbance is high amplitude and can be composed of either a bipolar anomaly, or a single polarity response. It is essentially associated with magnetic interference from modern ferrous structures such as fencing, vehicles or buildings, and as a result is commonly found around the perimeter of a site near to boundary fences.

### Negative linear

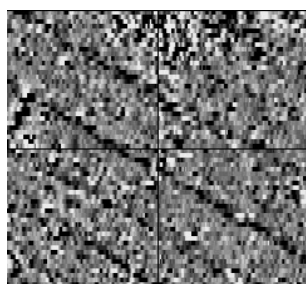


A linear response which is entirely negative in polarity. These are generally caused by earthen banks where material with a lower magnetic magnitude relative to the background top soil is built up. See also ploughing activity.

### Negative point/area

Opposite to positive point anomalies these responses may be caused by raised areas or earthen banks. These could be of an archaeological origin or may have a natural origin.

### Ploughing activity



Ploughing activity can often be visualised by a series of parallel linear anomalies. These can be of either positive polarity or negative polarity depending on site specifics. It can be difficult to distinguish between ancient ploughing and more modern ploughing. Clues such as the separation of each linear, straightness, strength of response and cross cutting relationships can be used to aid this, although none of these can be guaranteed to differentiate between different phases of activity.

### Polarity

Term used to describe the measurement of the magnetic response. An anomaly can have a positive polarity (values above 0nT) and/or a negative polarity (values below 0nT).

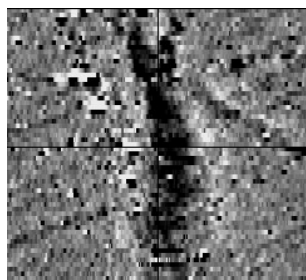
### Strength of response

The amplitude of a magnetic response is an important factor in assigning an interpretation to a particular anomaly. For example a positive anomaly covering a 10m<sup>2</sup> area may have values up to around 3000nT, in which case it is likely to be caused by modern magnetic interference. However, the same size and shaped anomaly but with values up to only 4nT may have a natural origin. Colour plots are used to show the amplitude of response.

### Thermoremanent response

A feature which has been subject to heat may result in it acquiring a magnetic field. This can be anything up to approximately +/-100 nT in value. These features include clay fired drains, brick, bonfires, kilns, hearths and even pottery. If the heat application has occurred in situ (e.g. a kiln) then the response is likely to be bipolar compared to if the heated objects have been disturbed and moved relative to each other, in which case they are more likely to take an irregular form and may display a debris style response (e.g. ash).

### Weak background variations



Weakly magnetic wide scale variations within the data can sometimes be seen within sites. These usually have no specific structure but can often appear curvy and sinuous in form. They are likely to be the result of natural features, such as soil creep, dried up (or seasonal) streams. They can also be caused by changes in the underlying geology or soil type which may contain unpredictable distributions of magnetic minerals, and are usually apparent in several locations across a site.



# Your Survey Partner

For a complete and complementary  
range of survey services

*Survey services  
you can rely on*

Archaeological  
As Built Records  
BIM Ready 3D Models  
Boundary Disputes  
CCTV  
Geophysical  
Laser Scanning  
Measured Building  
Pipeline Routes  
Railway  
Retrofit  
Setting Out  
Statutory Plan Collation  
Topographic  
Utility Mapping  
UXO Detection  
Void Detection

## **STRATASCAN LTD**

Vineyard House Upper Hook Road Upton upon Severn  
Worcestershire WR8 0SA United Kingdom

T:01684 592266 F: 01684 594142

info@stratascan.co.uk www.stratascan.co.uk

# STRATASCAN™



SUMO  
Group  
Member