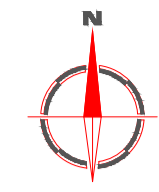


Reproduced from Ordnance Survey's 1:25 000 map of 1998 with the permission of the controller of Her Majesty's Stationery Office. Crown Copyright reserved. Licence No. AL 50125A
 Licence:
 Stratascan Ltd
 Vineyard House
 Upper Hook Road
 Upton Upon Severn
 WR8 0SA
 OS 100km square = SP



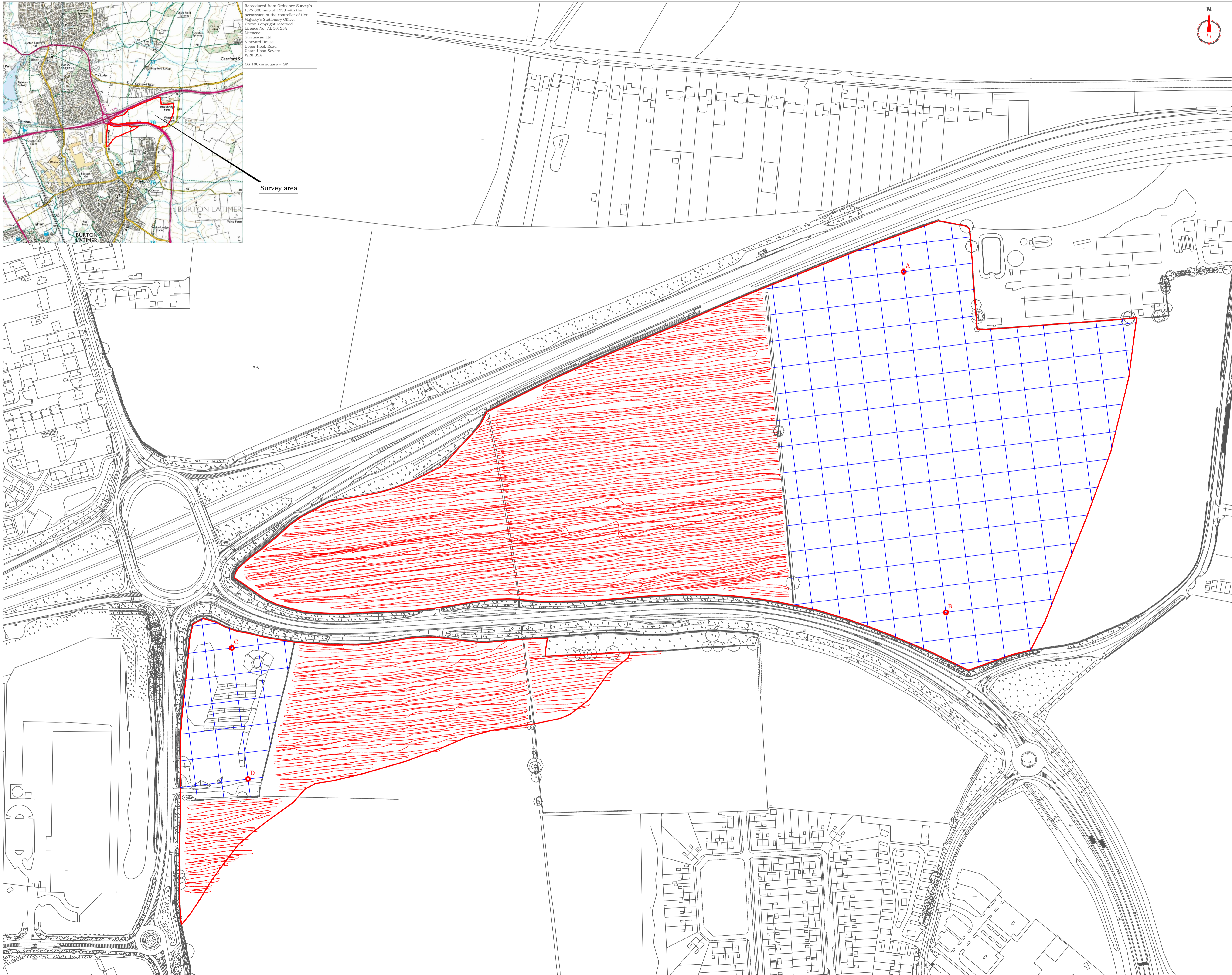
Amendments

Issue No.	Date	Description
-	-	-
-	-	-

© Stratascan Ltd - 2015



Site centred on NGR SP 901 761



KEY

- Area unsurveyable - overgrown vegetation and areas of rubble
- Cart collected traverse
- Manually collected grid

OS REFERENCING INFORMATION

A	490558.59, 276362.71
B	490606.72, 275975.69
C	489795.51, 275935.27
D	489814.02, 275786.42

Job No. **J8325** Survey Date **AUG-OCT 15**
 Client

CgMs CONSULTING LTD

Project Title
**A14 JUNCTION 10,
 KETTERING,
 NORTHAMPTONSHIRE**
 Subject

**SITE LOCATION, SURVEY
 AREA & REFERENCING**

STRATASCAN™
 GEOPHYSICS FOR ARCHAEOLOGY
 AND ENGINEERING
 VINEYARD HOUSE T: 01684 592266
 UPTON UPON SEVERN E: info@stratascan.co.uk
 WR8 0SA www.stratascan.co.uk



Scale 0m 20 40 60 80 100 120m
1:2000

Plot A1	Checked by DGE	Issue No. 02
Date OCT 15	Drawn by TR	Figure No. 01



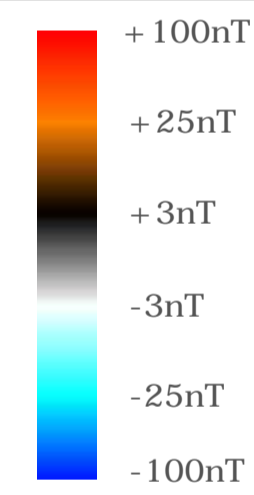
Amendments

Issue No.	Date	Description
-	-	-
-	-	-

© Stratascan Ltd - 2015

Plotting parameters

Maximum +100nT (red)
Minimum -100nT (blue)



Job No.	J8325	Survey Date	AUG-OCT 15
---------	-------	-------------	------------

Client
CgMs CONSULTING LTD

Project Title
**A14 JUNCTION 10,
KETTERING,
NORTHAMPTONSHIRE**

Subject
**COLOUR PLOT OF
GRADIOMETER DATA
SHOWING EXTREME VALUES -
OVERVIEW**

STRATASCAN™
GEOPHYSICS FOR ARCHAEOLOGY
AND ENGINEERING
VINEYARD HOUSE T: 01684 592266
UPTON UPON SEVERN E: info@stratascan.co.uk
WR8 0SA www.stratascan.co.uk



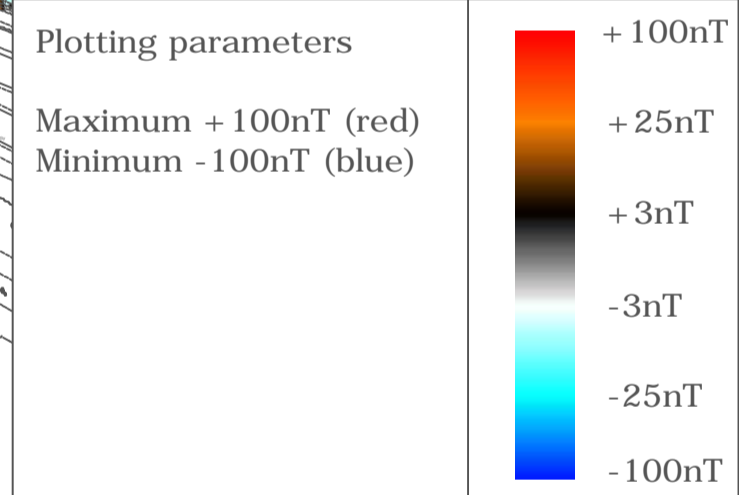
Scale 0m 20 40 60 80 100 120m
1:2000

Plot	A1	Checked by	DGE	Issue No.	02
Date	OCT 15	Drawn by	TR	Figure No.	02



Amendments		
Issue No.	Date	Description
-	-	-
-	-	-

© Stratascan Ltd - 2015



Job No. J8325 Survey Date AUG-OCT 15

Client
CgMs CONSULTING LTD

Project Title
A14 JUNCTION 10,
KETTERING,
NORTHAMPTONSHIRE

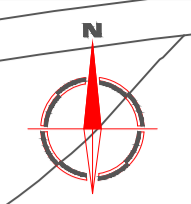
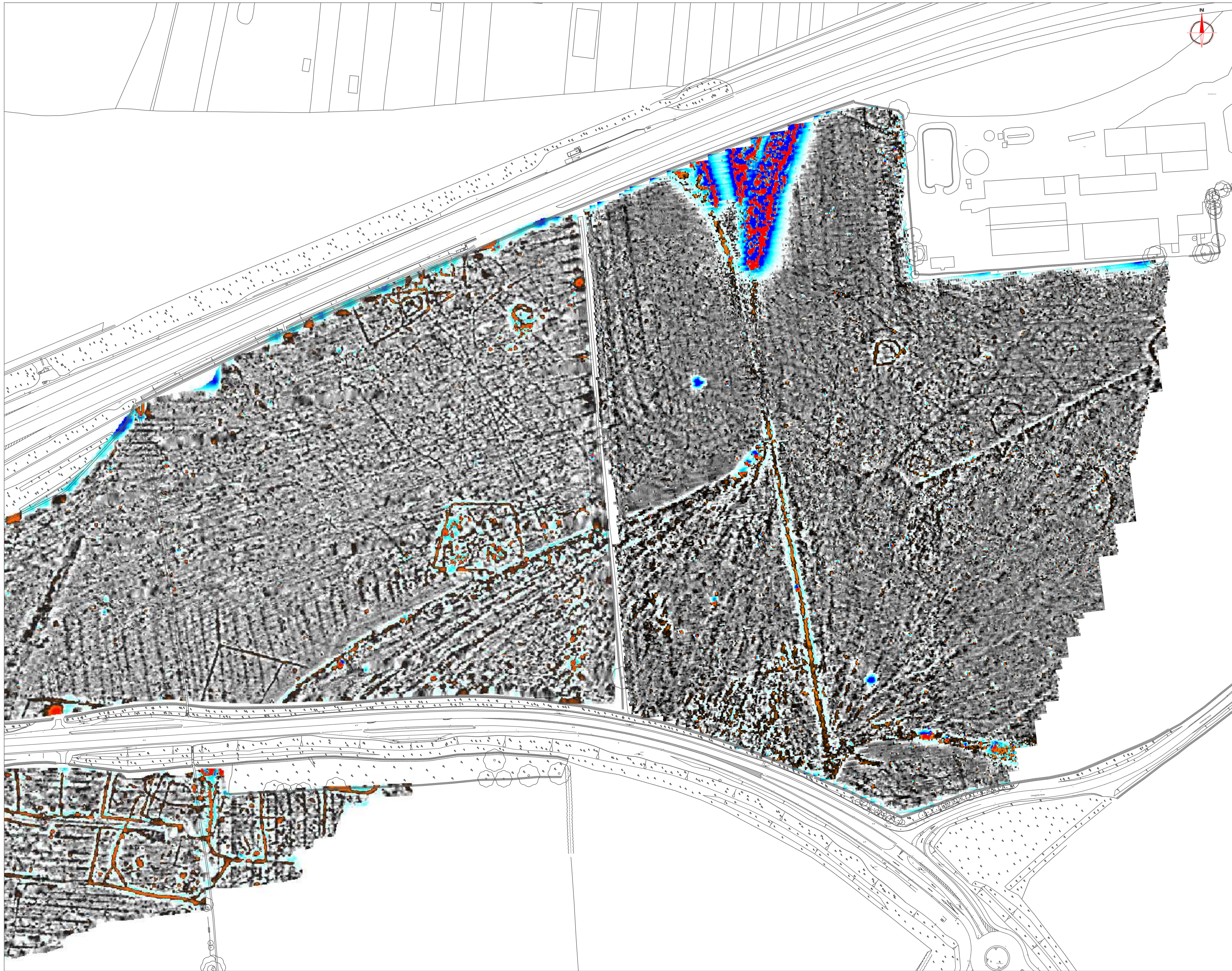
Subject
COLOUR PLOT OF
GRADIOMETER DATA
SHOWING EXTREME VALUES -
WEST

STRATASCAN™
GEOPHYSICS FOR ARCHAEOLOGY
AND ENGINEERING
VINEYARD HOUSE T: 01684 592266
UPTON UPON SEVERN E: info@stratascan.co.uk
WR8 0SA www.stratascan.co.uk



Scale 0m 10 20 30 40 50 60 70 80m
1:1250

Plot A1	Checked by DGE	Issue No. 02
Date OCT 15	Drawn by TR	Figure No. 03



Amendments

Issue No.	Date	Description
-	-	-
-	-	-

© Stratascan Ltd - 2015

Plotting parameters

Maximum +100nT (red)
Minimum -100nT (blue)

Job No. J8325	Survey Date AUG-OCT 15
------------------	---------------------------

Client
CgMs CONSULTING LTD

Project Title
A14 JUNCTION 10,
KETTERING,
NORTHAMPTONSHIRE

Subject
COLOUR PLOT OF
GRADIOMETER DATA
SHOWING EXTREME VALUES -
EAST

STRATASCAN™
GEOPHYSICS FOR ARCHAEOLOGY
AND ENGINEERING
VINEYARD HOUSE T: 01684 592266
UPTON UPON SEVERN E: info@stratascan.co.uk
WR8 0SA www.stratascan.co.uk



Scale 0m 10 20 30 40 50 60 70 80m
1:1250

Plot A1	Checked by DGE	Issue No. 02
Date OCT 15	Drawn by TR	Figure No. 04



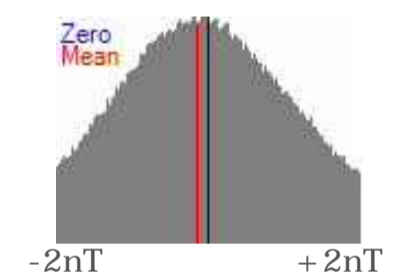
Amendments

Issue No.	Date	Description
-	-	-
-	-	-

© Stratascan Ltd - 2015

Plotting parameters

Maximum +2nT (black)
Minimum -2nT (white)



+2nT

-2nT

Job No. J8325 Survey Date AUG-OCT 15

Client
CgMs CONSULTING LTD

Project Title
A14 JUNCTION 10,
KETTERING,
NORTHAMPTONSHIRE

Subject
PLOT OF MINIMALLY
PROCESSED GRADIOMETER
DATA - OVERVIEW

STRATASCAN™

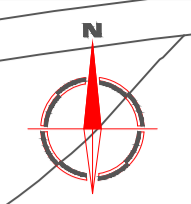
GEOPHYSICS FOR ARCHAEOLOGY
AND ENGINEERING

VINEYARD HOUSE T: 01684 592266
UPTON UPON SEVERN E: info@stratascan.co.uk
WR8 0SA www.stratascan.co.uk



Scale 0m 20 40 60 80 100 120m
1:2000

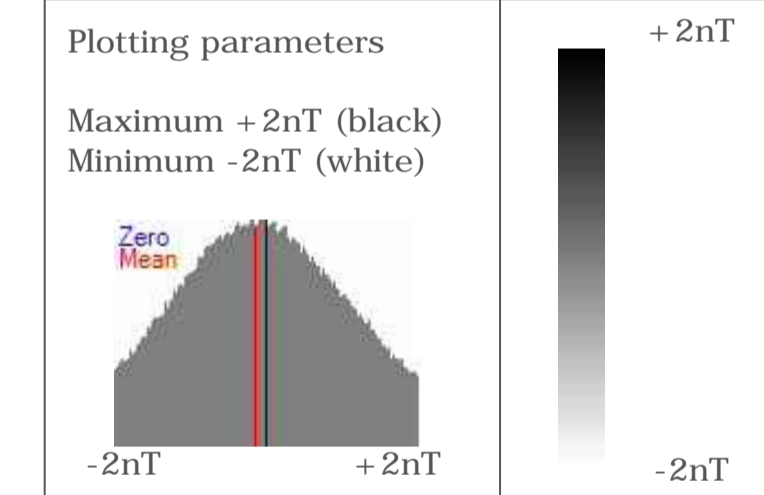
Plot A1	Checked by DGE	Issue No. 02
Date OCT 15	Drawn by TR	Figure No. 05



Amendments

Issue No.	Date	Description
-	-	-
-	-	-

© Stratascan Ltd - 2015



Job No.	Survey Date
J8325	AUG-OCT 15

Client
CgMs CONSULTING LTD

Project Title
**A14 JUNCTION 10,
KETTERING,
NORTHAMPTONSHIRE**

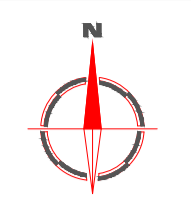
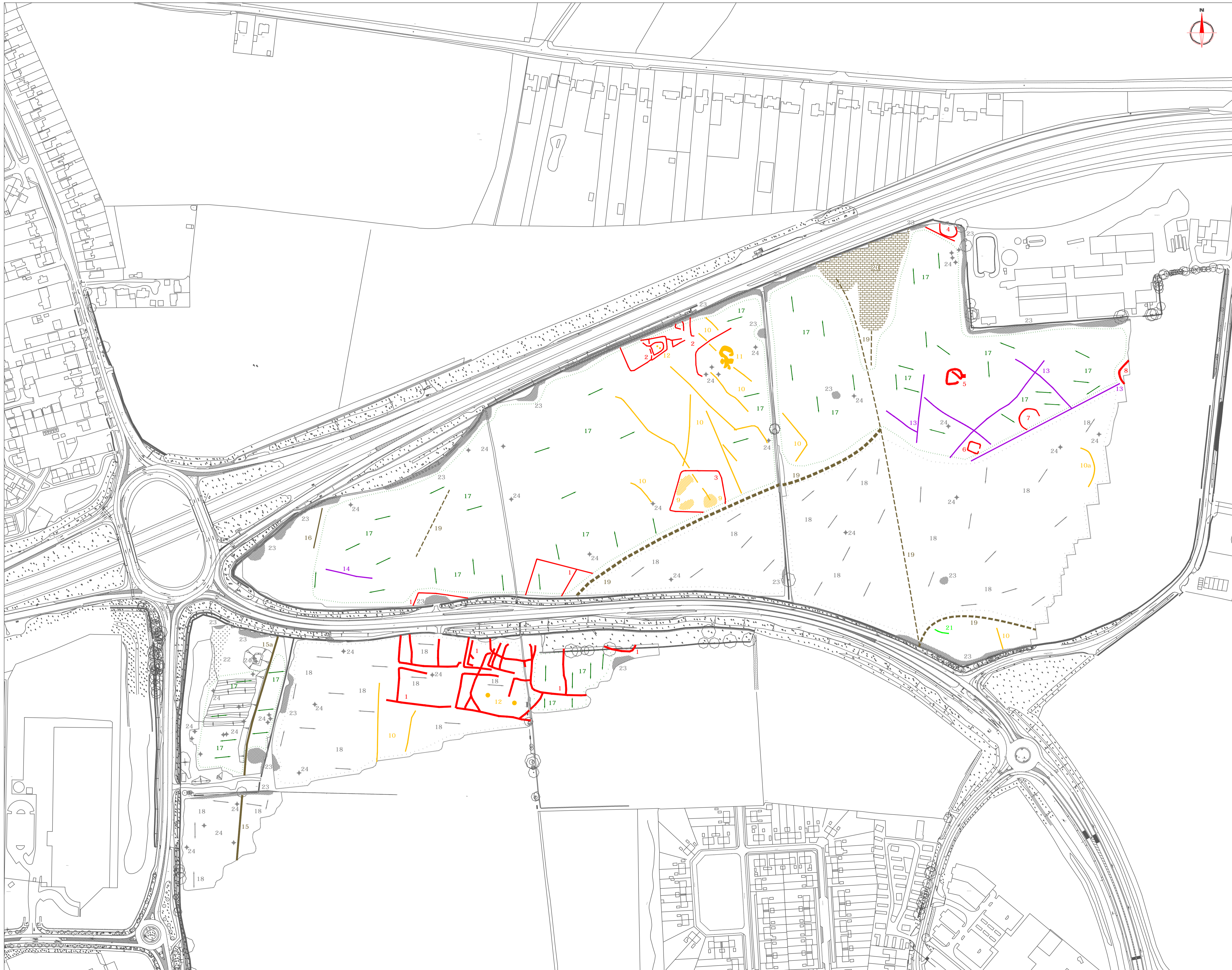
Subject
**PLOT OF MINIMALLY
PROCESSED GRADIOMETER
DATA - EAST**

STRATASCAN™
GEOPHYSICS FOR ARCHAEOLOGY
AND ENGINEERING
VINEYARD HOUSE T: 01684 592266
UPTON UPON SEVERN E: info@stratascan.co.uk
WR8 0SA www.stratascan.co.uk



Scale 0m 10 20 30 40 50 60 70 80m
1:1250

Plot	Checked by	Issue No.
A1	DGE	02
Date	Drawn by	Figure No.
OCT 15	TR	07



Amendments

Issue No.	Date	Description
-	-	-
-	-	-

© Stratascan Ltd - 2015

PROBABLE ARCHAEOLOGY

- Positive anomaly / weak positive anomaly - probable cut feature of archaeological origin
- Negative anomaly / weak negative anomaly - probable bank or earthwork of archaeological origin

POSSIBLE ARCHAEOLOGY

- Positive anomaly / weak positive anomaly - possible cut feature of archaeological origin
- Negative anomaly / weak negative anomaly - possible bank or earthwork of archaeological origin

MEDIEVAL/POST-MEDIEVAL AGRICULTURE

- Widely spaced curving parallel linear anomalies - probably related to ridge-and-furrow
- Closely spaced parallel linear anomalies - probably related to agricultural activity such as ploughing
- Linear anomaly - probably related to a former field boundary not present on available mapping
- Linear anomaly - related to a former field boundary present on available mapping

OTHER ANOMALIES

- Linear anomaly - probably related to pipe, cable or other modern service
- Linear anomaly - possibly related to land drain
- Linear anomaly - related to former tramway
- Linear anomaly - unknown origin, probably modern
- Magnetic disturbance associated with nearby metal object such as service or field boundary
- Strong magnetic debris - related to former tramway
- Scattered magnetic debris
- Area of amorphous magnetic variation - probable natural (e.g. geological or pedological) origin
- + Magnetic spike - probable ferrous object

Job No. J8325 Survey Date AUG-OCT 15
Client

CgMs CONSULTING LTD

Project Title
**A14 JUNCTION 10,
KETTERING,
NORTHAMPTONSHIRE**

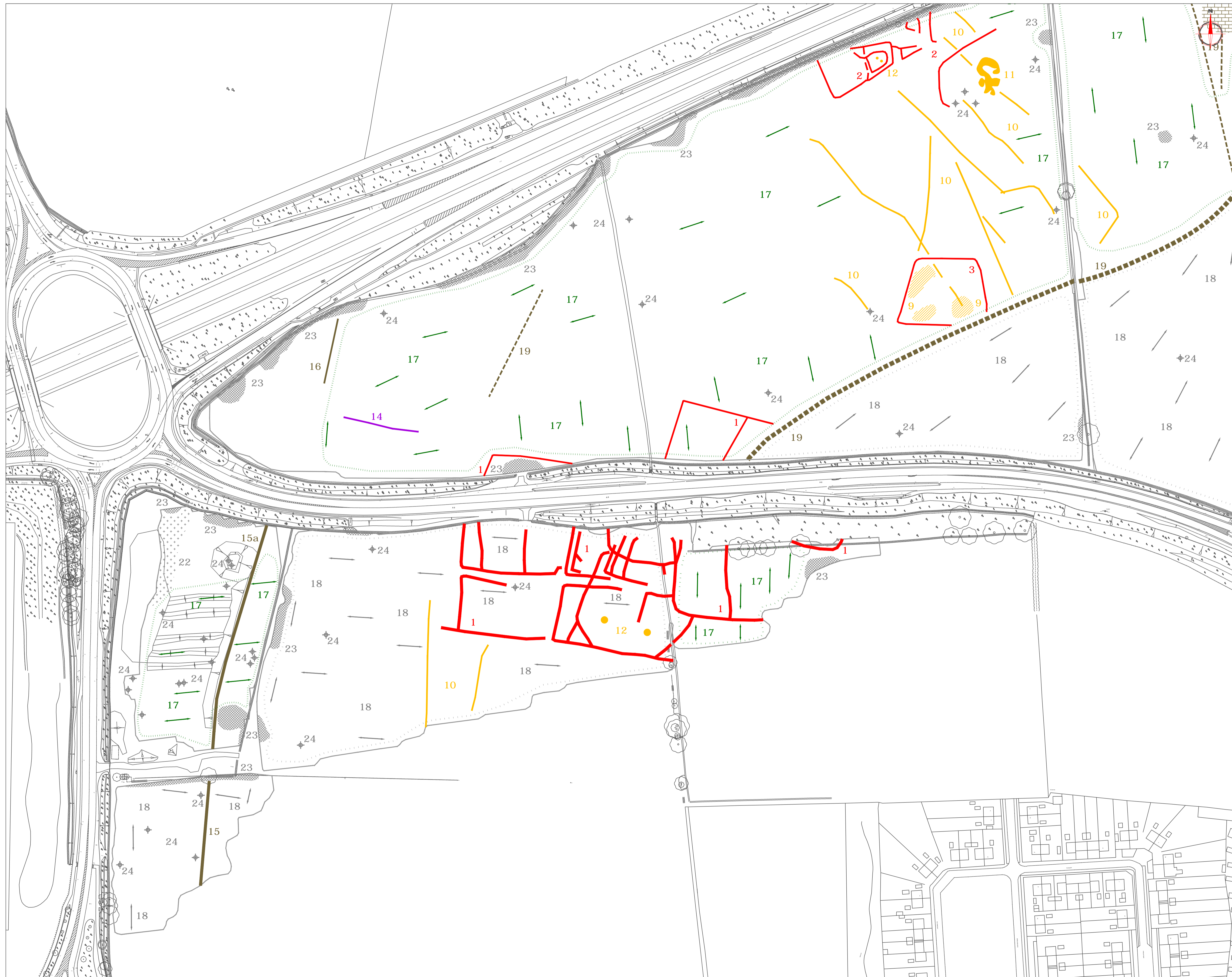
Subject
**ABSTRACTION AND
INTERPRETATION OF
GRADIOMETER ANOMALIES -
OVERVIEW**

STRATASCAN™
GEOPHYSICS FOR ARCHAEOLOGY
AND ENGINEERING
VINEYARD HOUSE T: 01684 592266
UPTON UPON SEVERN E: info@stratascan.co.uk
WR8 0SA www.stratascan.co.uk



Scale 0m 20 40 60 80 100 120m
1:2000

Plot A1	Checked by DGE	Issue No. 02
Date OCT 15	Drawn by TR	Figure No. 08



Amendments		
Issue No.	Date	Description
© Stratascan Ltd - 2015		

PROBABLE ARCHAEOLOGY

- Positive anomaly / weak positive anomaly - probable cut feature of archaeological origin
- Negative anomaly / weak negative anomaly - probable bank or earthwork of archaeological origin

POSSIBLE ARCHAEOLOGY

- Positive anomaly / weak positive anomaly - possible cut feature of archaeological origin
- Negative anomaly / weak negative anomaly - possible bank or earthwork of archaeological origin

MEDIEVAL/POST-MEDIEVAL AGRICULTURE

- Widely spaced curving parallel linear anomalies - probably related to ridge-and-furrow
- Closely spaced parallel linear anomalies - probably related to agricultural activity such as ploughing
- Linear anomaly - probably related to a former field boundary not present on available mapping
- Linear anomaly - related to a former field boundary present on available mapping

OTHER ANOMALIES

- Linear anomaly - probably related to pipe, cable or other modern service
- Linear anomaly - possibly related to land drain
- Linear anomaly - related to former tramway
- Linear anomaly - unknown origin, probably modern
- Magnetic disturbance associated with nearby metal object such as service or field boundary
- Strong magnetic debris - possible disturbed or made ground
- Scattered magnetic debris
- Area of amorphous magnetic variation - probable natural (e.g. geological or pedological) origin
- Magnetic spike - probable ferrous object

Job No. J8325 Survey Date AUG-OCT 15

Client
CgMs CONSULTING LTD

Project Title
A14 JUNCTION 10, KETTERING, NORTHAMPTONSHIRE

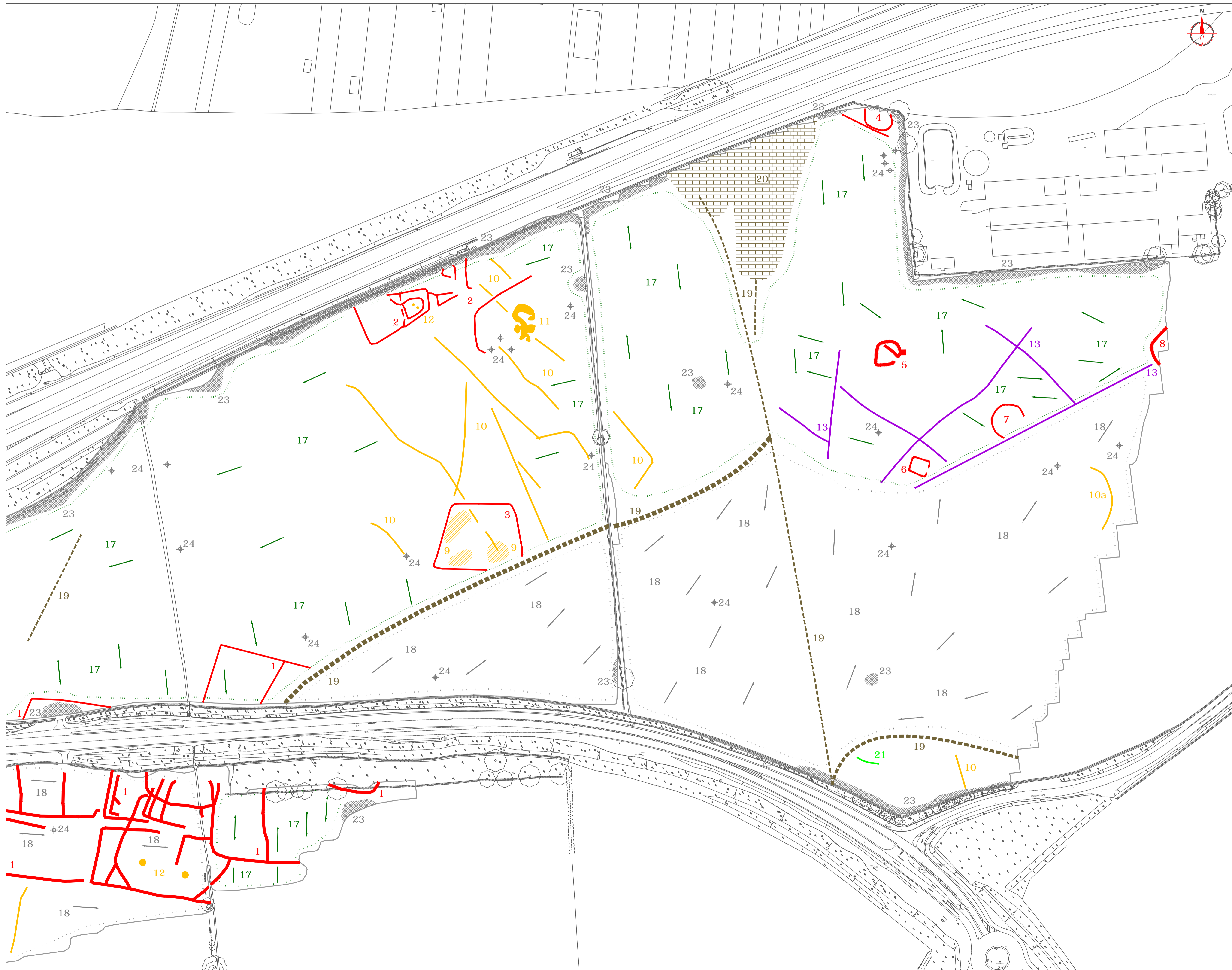
Subject
ABSTRACTION AND INTERPRETATION OF GRADIOMETER ANOMALIES - WEST

STRATASCAN™
GEOPHYSICS FOR ARCHAEOLOGY AND ENGINEERING
VINEYARD HOUSE T: 01684 592266
UPTON UPON SEVERN E: info@stratascan.co.uk
WR8 0SA www.stratascan.co.uk

GPR ASSOCIATION
SUMO SUMO GROUP MEMBER
ISO 9001 certified ISO 14001 certified

Scale 0m 10 20 30 40 50 60 70 80m
1: 1250

Plot A1	Checked by DGE	Issue No. 02
Date OCT 15	Drawn by TR	Figure No. 09



Amendments		
Issue No.	Date	Description
-	-	-
-	-	-
© Stratascan Ltd - 2015		
PROBABLE ARCHAEOLOGY		
	Positive anomaly / weak positive anomaly - probable cut feature of archaeological origin	
	Negative anomaly / weak negative anomaly - probable bank or earthwork of archaeological origin	
POSSIBLE ARCHAEOLOGY		
	Positive anomaly / weak positive anomaly - possible cut feature of archaeological origin	
	Negative anomaly / weak negative anomaly - possible bank or earthwork of archaeological origin	
MEDIEVAL/POST-MEDIEVAL AGRICULTURE		
	Widely spaced curving parallel linear anomalies - probably related to ridge-and-furrow	
	Closely spaced parallel linear anomalies - probably related to agricultural activity such as ploughing	
	Linear anomaly - probably related to a former field boundary not present on available mapping	
	Linear anomaly - related to a former field boundary present on available mapping	
OTHER ANOMALIES		
	Linear anomaly - probably related to pipe, cable or other modern service	
	Linear anomaly - possibly related to land drain	
	Linear anomaly - related to former tramway	
	Linear anomaly - unknown origin, probably modern	
	Magnetic disturbance associated with nearby metal object such as service or field boundary	
	Strong magnetic debris - possible disturbed or made ground	
	Scattered magnetic debris	
	Area of amorphous magnetic variation - probable natural (e.g. geological or pedological) origin	
	Magnetic spike - probable ferrous object	
Job No.	Survey Date	
J8325	AUG-OCT 15	
Client		
CgMs CONSULTING LTD		
Project Title		
A14 JUNCTION 10, KETTERING, NORTHAMPTONSHIRE		
Subject		
ABSTRACTION AND INTERPRETATION OF GRADIOMETER ANOMALIES - EAST		
STRATASCAN™		
GEOPHYSICS FOR ARCHAEOLOGY AND ENGINEERING		
VINEYARD HOUSE		T: 01684 592266
UPTON UPON SEVERN		E: info@stratascan.co.uk
WR8 0SA		www.stratascan.co.uk
Scale 0m 10 20 30 40 50 60 70 80m		
1:1250		
Plot	Checked by	Issue No.
A1	DGE	02
Date	Drawn by	Figure No.
OCT 15	TR	10