

PRELIMINARY

Amendments

Issue No.	Date	Description
-	-	-
-	-	-

© Stratascan Ltd - ----

Plotting parameters

Maximum +100nT (red)
Minimum -100nT (blue)

+100nT
+25nT
+3nT
-3nT
-25nT
-100nT

Client
CgMs CONSULTING LTD

Project Title **KIDDERMINSTER** Job No. **J8446**

Subject
COLOUR PLOT OF GRADIOMETER DATA SHOWING EXTREME VALUES

STRATASCAN™
GEOPHYSICS FOR ARCHAEOLOGY AND ENGINEERING

VINEYARD HOUSE T: 01684 592266
UPTON UPON SEVERN E: info@stratascan.co.uk
WR8 0SA www.stratascan.co.uk

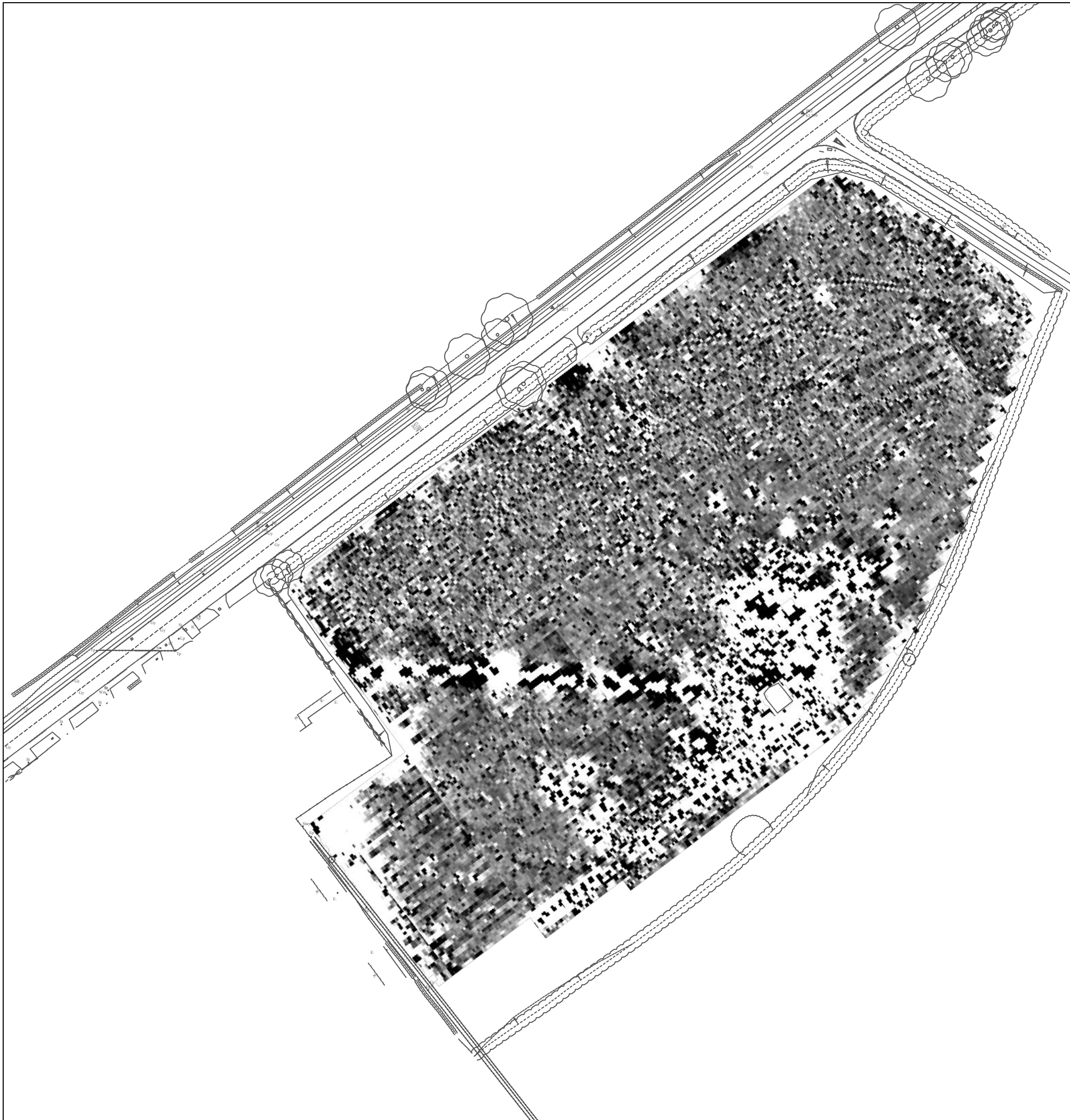
GPR ASSOCIATION

SUMO SURVEYS SUMO GROUP MEMBER

ims ISO 9001 certified **UKAS** **ims ISO 14001 certified** **UKAS**

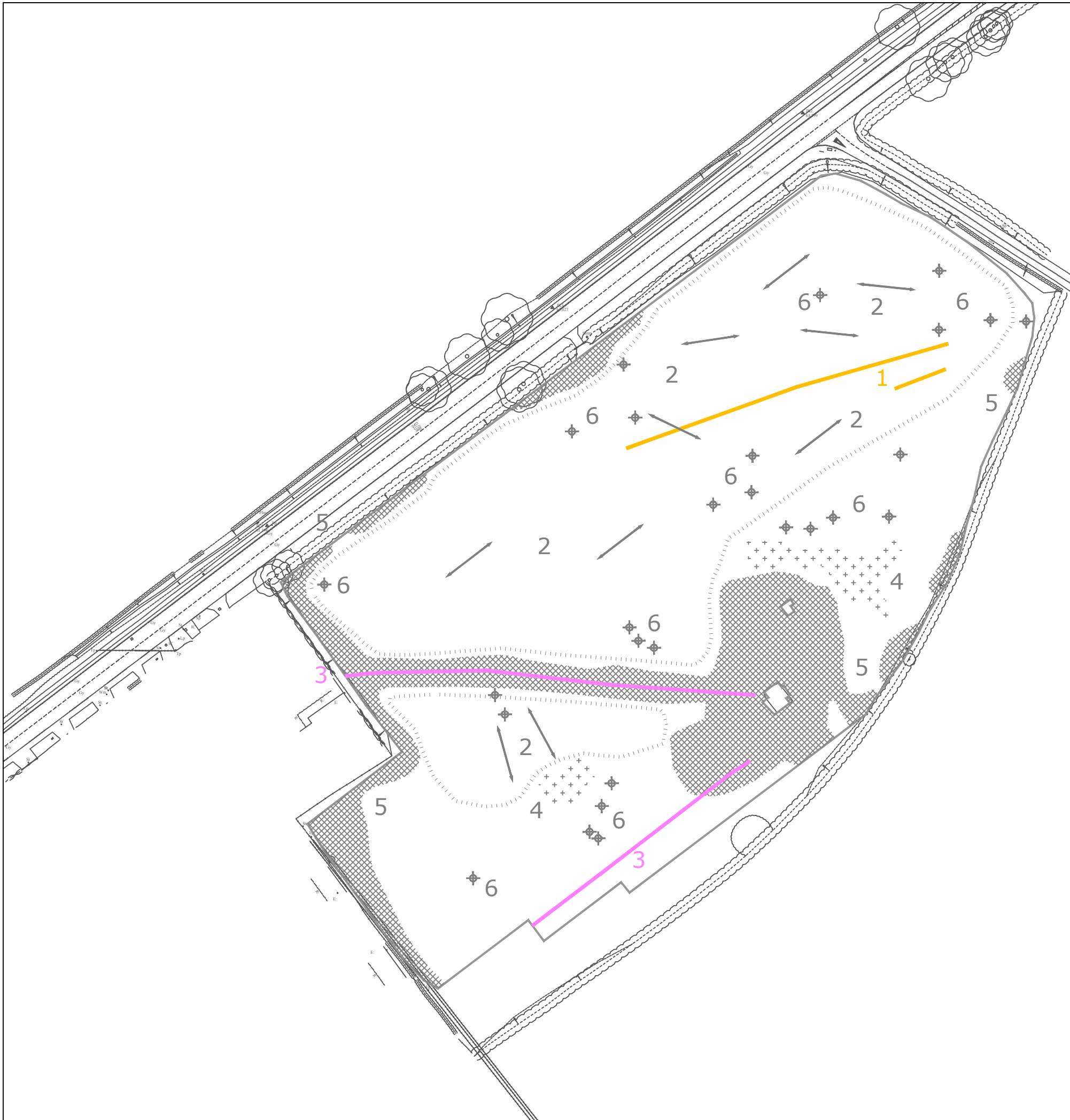
Scale **1:1250** 0m 10 20 30 40 50m

Plot A3	Checked by DGE	Issue No. P1
Survey date MAY 15	Drawn by TR	Figure No. A



PRELIMINARY

Amendments		
Issue No.	Date	Description
-	-	-
-	-	-
© Stratascan Ltd - ----		
Plotting parameters		
Maximum +2nT (black)		+2nT
Minimum -2nT (white)		-2nT
Client		
CgMs CONSULTING LTD		
Project Title		Job No. J8446
KIDDERMINSTER		
Subject		
PLOT OF MINIMALLY PROCESSED GRADIOMETER DATA		
<p>STRATASCAN™ GEOPHYSICS FOR ARCHAEOLOGY AND ENGINEERING VINEYARD HOUSE T: 01684 592266 UPTON UPON SEVERN E: info@stratascan.co.uk WR8 0SA www.stratascan.co.uk</p>		
Scale 1:1250		
Plot	Checked by	Issue No.
A3	DGE	P1
Survey date	Drawn by	Figure No.
MAY 15	TR	B



PRELIMINARY



Amendments		
Issue No.	Date	Description
-	-	-
-	-	-
© Stratascan Ltd - ----		
PROBABLE ARCHAEOLOGY		
		Positive anomaly / weak positive anomaly - probable cut feature of archaeological origin
		Negative anomaly / weak negative anomaly - probable bank or earthwork of archaeological origin
POSSIBLE ARCHAEOLOGY		
		Positive anomaly / weak positive anomaly - possible cut feature of archaeological origin
		Negative anomaly / weak negative anomaly - possible bank or earthwork of archaeological origin
MEDIEVAL/POST-MEDIEVAL AGRICULTURE		
		Widely spaced curving parallel linear anomalies - probably related to ridge-and-furrow
		Closely spaced parallel linear anomalies - probably related to agricultural activity such as ploughing
		Linear anomaly - probably related to a former field boundary not present on available mapping
		Linear anomaly - related to a former field boundary present on available mapping
OTHER ANOMALIES		
		Linear anomaly - probably related to pipe, cable or other modern service
		Linear anomaly - possibly related to land drain
		Magnetic disturbance associated with nearby metal object such as service or field boundary
		Strong magnetic debris - possible disturbed or made ground
		Scattered magnetic debris
		Area of amorphous magnetic variation - probable natural (e.g. geological or pedological) origin
		Magnetic spike - probable ferrous object
Client		
CgMs CONSULTING LTD		
Project Title		Job No. J8446
KIDDERMINSTER		
Subject		
ABSTRACTION AND INTERPRETATION OF GRADIOMETER ANOMALIES		
STRATASCAN™		
GEOPHYSICS FOR ARCHAEOLOGY AND ENGINEERING		
VINEYARD HOUSE		T: 01684 592266
UPTON UPON SEVERN	WR8 0SA	E: info@stratascan.co.uk www.stratascan.co.uk
SUMO GROUP MEMBER		
Scale 1:1250		
Plot	Checked by	Issue No.
A3	DGE	P1
Survey date	Drawn by	Figure No.
MAY 15	TR	C