

GEOPHYSICAL SURVEY REPORT

STRATASCAN™



Project name:
Swansley Wood, Cambourne

Client:
Royal HaskoningDHV

October 2014

Job ref:
J6640

Report author:
Rebecca Davies BSc (Hons)

GEOPHYSICAL SURVEY REPORT

Project name:

Swansley Wood, Cambourne

Client:

Royal HaskoningDHV



Job ref:

J6640

Survey date:

**24th March - 3rd April, 21st July,
26th-29th August, 3rd-19th
September, 29th September-2nd
October 2014**

Site centred at:

TL 303 604

Post code:

CB23 3PH

Project manager:

Simon Haddrell BEng(Hons) AMBCS PIFA

Techniques:

**Detailed magnetic survey –
Gradiometry**

Field team:

Andrew Bateman BSc (Hons), **Jack Larner**,
Stephen Weston BA (Hons), **Lukasz Krawec**,
Thomas Worthington BSc, **Richard Kemp** MA,
Richard Collins BSc (Hons), **James Slater** BSc (Hons),
Steven Chetwynd BA (Hons)

Report written By:

Rebecca Davies BSc (Hons)

CAD illustrations by:

Rebecca Davies BSc (Hons)

Checked by:

David Elks MSc AIFA

TABLE OF CONTENTS

LIST OF FIGURES.....	2
1 SUMMARY OF RESULTS	3
2 INTRODUCTION	3
2.1 Background synopsis.....	3
2.2 Site location	3
2.3 Description of site	3
2.4 Geology and soils	3
2.5 Site history and archaeological potential	3
2.6 Survey objectives	4
2.7 Survey methods	4
2.8 Processing, presentation and interpretation of results.....	4
2.8.1 Processing	4
2.8.2 Presentation of results and interpretation.....	4
3 RESULTS.....	5
3.1 Probable Archaeology.....	5
3.2 Possible Archaeology	6
3.3 Other Anomalies	6
4 CONCLUSION	7
5 REFERENCES	8
APPENDIX A – METHODOLOGY & SURVEY EQUIPMENT	9
APPENDIX B – BASIC PRINCIPLES OF MAGNETIC SURVEY	10
APPENDIX C – GLOSSARY OF MAGNETIC ANOMALIES.....	11

LIST OF FIGURES

Figure 01	1:3000	Location plan of survey area and referencing
Figure 02	1:3000	Colour plot of gradiometer data – Overview
Figure 03	1:1250	Colour plot of gradiometer data – North
Figure 04	1:1250	Colour plot of gradiometer data – North East
Figure 05	1:1250	Colour plot of gradiometer data – South East
Figure 06	1:1250	Colour plot of gradiometer data – South
Figure 07	1:1250	Colour plot of gradiometer data - West
Figure 08	1:1250	Colour plot of gradiometer data – North West
Figure 9	1:3000	Plot of minimally processed gradiometer data – Overview
Figure 10	1: 1250	Plot of minimally processed gradiometer data – North
Figure 11	1:1250	Plot of minimally processed gradiometer data – North East
Figure 12	1:1250	Plot of minimally processed gradiometer data – South East
Figure 13	1:1250	Plot of minimally processed gradiometer data – South
Figure 14	1:1250	Plot of minimally processed gradiometer data - West
Figure 15	1:1250	Plot of minimally processed gradiometer data – North West
Figure 16	1:3000	Interpretation – Overview
Figure 17	1:1250	Interpretation – North
Figure 18	1:1250	Interpretation – North East
Figure 19	1:1250	Interpretation – South East
Figure 20	1:1250	Interpretation – South
Figure 21	1:1250	Interpretation - West
Figure 22	1:1250	Interpretation – North West

1 SUMMARY OF RESULTS

A detailed gradiometry survey was conducted over approximately 137 hectares of agricultural land. A number of areas of former settlement activity, comprising enclosures and pits, have been identified and may be associated with the Iron Age and Roman periods. Former historic field boundaries and evidence of ridge and furrow cultivation provide evidence of past agricultural activity. A number of positive anomalies are indicative of former cut features and may be of archaeological origin, though their exact origin is unknown. The remaining features are of natural or modern origin and include a track, service, land drains and ferrous objects.

2 INTRODUCTION

2.1 *Background synopsis*

Stratascan were commissioned to undertake a geophysical survey of an area outlined for development. This survey forms part of an archaeological investigation being undertaken by Royal HaskoningDHV.

2.2 *Site location*

The site is located near to the south of the A428 with the A1198 forming the western and southern boundary of the site at OS ref. TL 303 604. The southeast is bound by a residential area while the northeast backs on to agricultural land.

2.3 *Description of site*

The survey area is 137 hectares of agricultural land with no obstructions to the site.

2.4 *Geology and soils*

The underlying geology is West Walton Formation and Ampthill Clay Formation mudstone (British Geological Survey website). The drift geology is Oadby Member diamicton (British Geological Survey website).

The overlying soils are known as Hanslope which are typical calcareous pelosols. These consist of slowly permeable calcareous clayey soils and some slowly permeable non-calcareous soils with slight risk of water erosion (Soil Survey of England and Wales, Sheet 4 Eastern England).

2.5 *Site history and archaeological potential*

Extract from 'Land at West Cambourne – Archaeological Desk-Based Assessment' (Royal Haskoning DHV, 2014):

*"The archaeological and historical baseline evidence reflects human presence within the study area from the Late Neolithic period onwards. This assessment considers there to be a **high** potential for the recovery of Iron Age and Romano-British remains indicative of settlement and*

*agricultural activity; a **high** potential for medieval and post-medieval agriculture; a **low/moderate** potential for settlement activity dating to the Bronze Age and Saxon period and a **low** potential for early prehistoric, Neolithic and modern activity.”*

2.6 **Survey objectives**

The objective of the survey was to locate any features of possible archaeological origin in order that they may be assessed prior to development.

2.7 **Survey methods**

This report and all fieldwork have been conducted in accordance with both the English Heritage guidelines outlined in the document: *Geophysical Survey in Archaeological Field Evaluation, 2008* and with the Institute for Archaeologists document *Standard and Guidance for Archaeological Geophysical Survey*.

Due to the high potential for archaeological remains of Iron Age, Roman and medieval to be identified and that previous results using this technique over diamicton mudstone have been successful, detailed magnetic survey (gradiometry) was used as an efficient and effective method of locating archaeological anomalies. More information regarding this technique is included in Appendix A.

2.8 **Processing, presentation and interpretation of results**

2.8.1 *Processing*

Processing is performed using specialist software. This can emphasise various aspects contained within the data but which are often not easily seen in the raw data. Basic processing of the magnetic data involves 'flattening' the background levels with respect to adjacent traverses and adjacent grids. Once the basic processing has flattened the background it is then possible to carry out further processing which may include low pass filtering to reduce 'noise' in the data and hence emphasise the archaeological or man-made anomalies.

The following schedule shows the basic processing carried out on all minimally processed gradiometer data used in this report:

1. *Destripe* (Removes striping effects caused by zero-point discrepancies between different sensors and walking directions)
2. *Destagger* (Removes zigzag effects caused by inconsistent walking speeds on sloping, uneven or overgrown terrain)

2.8.2 *Presentation of results and interpretation*

The presentation of the data for each site involves a print-out of the minimally processed data both as a greyscale plot and a colour plot showing extreme magnetic values. Magnetic anomalies have been identified and plotted onto the 'Interpretation' drawings for the site.

3 RESULTS

The detailed magnetic gradiometer survey conducted at Swansley Wood, Cambourne has identified a number of anomalies that have been characterised as being either of a *probable* or *possible* archaeological origin.

The difference between *probable* and *possible* archaeological origin is a confidence rating. Features identified within the dataset that form recognisable archaeological patterns or seem to be related to a deliberate historical act have been interpreted as being of a probable archaeological origin.

Features of possible archaeological origin tend to be more amorphous anomalies which may have similar magnetic attributes in terms of strength or polarity but are difficult to classify as being archaeological or natural.

The following list of numbered anomalies refers to numerical labels on the interpretation plots.

3.1 *Probable Archaeology*

- 1-2** Positive linear and curvilinear anomalies in the west of the site. These are likely to relate to a former enclosed ring ditch.
- 3-7** A number of positive linear anomalies across the site. These are indicative of former settlement activity.
- 8-11** A number of discrete positive anomalies that are indicative of small former cut features such as backfilled pits. These are associated with settlement activity on the site (Anomalies 1-7)
- 12** Linear anomalies in the west of the site that are related to former field boundaries visible on historic mapping from 1887 to 1903.
- 13** Linear anomalies in the north of the site that are related to former field boundaries visible on historic mapping from 1887 to 1960.
- 14** Linear anomalies in the north, east and southeast of the site that are related to former field boundaries visible on historic mapping from 1891 to 1960.
- 15** A linear anomaly in the north of the site that is related to a former field boundary visible on historic mapping from 1903 to 1960.
- 16** Scattered magnetic debris in the north of the site that is related to a former track way visible on historic mapping from 1887 to 1960.
- 17** Scattered magnetic debris in the centre of the site that is related to a former track way, present on available mapping from 1887.

- 18 A linear anomaly in the centre of the site that is related to a former footpath visible on historic mapping 1887 to 1960.
- 19 A small number of linear anomalies in the north and west of the site that are related to former field boundaries not visible on historic mapping.
- 20 A linear anomaly in the northeast of the site that is related to a former track way that is not visible on available historic mapping.
- 21 Widely spaced curving parallel linear anomalies across the site are related to ridge and furrow cultivation on the site.

3.2 *Possible Archaeology*

- 22 A number of positive linear anomalies across the site that are indicative of former cut features. These are of possible archaeological origin.
- 23 A discrete positive linear anomaly in the south of the site that is indicative of former cut features such as backfilled pits and may be of archaeological or natural origin.

3.3 *Other Anomalies*

- 24 An area of scattered magnetic debris in the northwest of the site that is related to a former track way visible on mapping from 1951 to 1960
- 25 A number of linear anomalies in the north and northeast of the site are related to land drains.
- 26 A small number of closely spaced parallel linear anomalies in the north and east of the site. These are associated with modern agricultural activity such as ploughing.
- 27 A bipolar linear anomaly in the north of the site is related to a modern service such as pipe or cable.
- 28 A small area of magnetic disturbance in the north of the site is of unknown origin, but is likely to be modern.
- 29 A number of areas of amorphous magnetic variation in the north of the site are likely to be of natural origin however they may also relate to the removal of woodland in the area.
- 30 A number of areas of scattered magnetic debris in the north, northeast and southeast of the site and are likely to relate to modern rubbish.

- 31** Areas of magnetic disturbance are the result of substantial nearby ferrous metal objects such as fences and underground services. These effects can mask weaker archaeological anomalies, but on this site have not affected a significant proportion of the area.
- 32** A number of magnetic 'spikes' (strong focussed values with associated antipolar response) indicate ferrous metal objects. These are likely to be modern rubbish.

4 CONCLUSION

The survey at Swansley Wood, Cambourne has identified a number of anomalies of probable and possible archaeology. Several areas of former settlement activity can be seen, comprising former enclosures and pits. These may be associated with Iron Age and Roman settlement activity on the site as indicated in the desk-based assessment. Several former field boundaries, track ways and large areas of medieval ridge and furrow cultivation across the site suggest that past land use has been largely agricultural and further supports the desk-based assessment. A number of linear anomalies indicative of former cut features of possible archaeological origin may relate to the settlement activity on the site, however their origin cannot be determined with any degree of accuracy. The remaining features relate to natural and modern anomalies such as a track, a service, land drains and nearby ferrous metal objects.

5 REFERENCES

British Geological Survey South Sheet, 1977. *Geological Survey Ten Mile Map, South Sheet First Edition (Quaternary)*. Institute of Geological Sciences.

British Geological Survey, 2001. *Geological Survey Ten Mile Map, South Sheet, Fourth Edition (Solid)*. British Geological Society.

British Geological Survey, n.d., *website*:
(<http://www.bgs.ac.uk/opengeoscience/home.html?Accordion1=1#maps>) Geology of Britain viewer.

English Heritage, 2008. *Geophysical Survey in Archaeological Field Evaluation*.

Institute For Archaeologists. *Standard and Guidance for Archaeological Geophysical Survey*.
<http://www.archaeologists.net/sites/default/files/nodefiles/Geophysics2010.pdf>

Royal Haskoning DHV, 2014. *Land at West Cambourne – Archaeological Desk-Based Assessment*.

Soil Survey of England and Wales, 1983. *Soils of England and Wales, Sheet 4 Eastern England*.

APPENDIX A – METHODOLOGY & SURVEY EQUIPMENT

Grid locations

The location of the survey grids has been plotted together with the referencing information. Grids were set out using a Leica 705auto Total Station and referenced to suitable topographic features around the perimeter of the site or a Leica Smart Rover RTK GPS.

An RTK GPS (Real-time Kinematic Global Positioning System) can locate a point on the ground to a far greater accuracy than a standard GPS unit. A standard GPS suffers from errors created by satellite orbit errors, clock errors and atmospheric interference, resulting in an accuracy of 5m-10m. An RTK system uses a single base station receiver and a number of mobile units. The base station re-broadcasts the phase of the carrier it measured, and the mobile units compare their own phase measurements with those they received from the base station. A SmartNet RTK GPS uses Ordnance Survey's network of over 100 fixed base stations to give an accuracy of around 0.01m.

Survey equipment and gradiometer configuration

Although the changes in the magnetic field resulting from differing features in the soil are usually weak, changes as small as 0.2 nanoTeslas (nT) in an overall field strength of 48,000nT, can be accurately detected using an appropriate instrument.

The mapping of the anomaly in a systematic manner will allow an estimate of the type of material present beneath the surface. Strong magnetic anomalies will be generated by buried iron-based objects or by kilns or hearths. More subtle anomalies such as pits and ditches can be seen if they contain more humic material which is normally rich in magnetic iron oxides when compared with the subsoil.

To illustrate this point, the cutting and subsequent silting or backfilling of a ditch may result in a larger volume of weakly magnetic material being accumulated in the trench compared to the undisturbed subsoil. A weak magnetic anomaly should therefore appear in plan along the line of the ditch.

The magnetic survey was carried out using a dual sensor Grad601-2 Magnetic Gradiometer manufactured by Bartington Instruments Ltd. The instrument consists of two fluxgates very accurately aligned to nullify the effects of the Earth's magnetic field. Readings relate to the difference in localised magnetic anomalies compared with the general magnetic background. The Grad601-2 consists of two high stability fluxgate gradiometers suspended on a single frame. Each gradiometer has a 1m separation between the sensing elements so enhancing the response to weak anomalies.

Sampling interval

For cart collected data, readings were taken at 0.125m centres along traverses 0.75m apart.

Areas not suitable for cart collection are collected manually. For manual collection readings were taken at 0.25m centres along traverses 1m apart. This equates to 3600 sampling points in a full 30m x 30m grid.

Depth of scan and resolution

The Grad 601-2 has a typical depth of penetration of 0.5m to 1.0m, though strongly magnetic objects may be visible at greater depths. The collection of data at 0.25m centres provides an optimum methodology for the task balancing cost and time with resolution.

Data capture

The readings are logged consecutively into the data logger which in turn is daily down-loaded into a portable computer whilst on site. At the end of each site survey, data is transferred to the office for processing and presentation.

APPENDIX B – BASIC PRINCIPLES OF MAGNETIC SURVEY

Detailed magnetic survey can be used to effectively define areas of past human activity by mapping spatial variation and contrast in the magnetic properties of soil, subsoil and bedrock.

Weakly magnetic iron minerals are always present within the soil and areas of enhancement relate to increases in *magnetic susceptibility* and permanently magnetised *thermoremanent* material.

Magnetic susceptibility relates to the induced magnetism of a material when in the presence of a magnetic field. This magnetism can be considered as effectively permanent as it exists within the Earth's magnetic field. Magnetic susceptibility can become enhanced due to burning and complex biological or fermentation processes.

Thermoremanence is a permanent magnetism acquired by iron minerals that, after heating to a specific temperature known as the Curie Point, are effectively demagnetised followed by re-magnetisation by the Earth's magnetic field on cooling. Thermoremanent archaeological features can include hearths and kilns and material such as brick and tile may be magnetised through the same process.

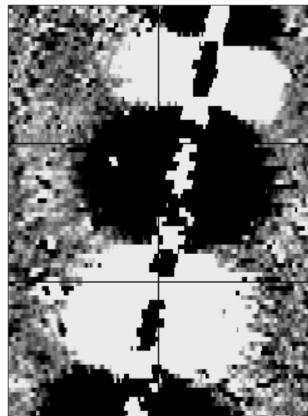
Silting and deliberate infilling of ditches and pits with magnetically enhanced soil creates a relative contrast against the much lower levels of magnetism within the subsoil into which the feature is cut. Systematic mapping of magnetic anomalies will produce linear and discrete areas of enhancement allowing assessment and characterisation of subsurface features. Material such as subsoil and non-magnetic bedrock used to create former earthworks and walls may be mapped as areas of lower enhancement compared to surrounding soils.

Magnetic survey is carried out using a fluxgate gradiometer which is a passive instrument consisting of two sensors mounted vertically 1m apart. The instrument is carried about 30cm above the ground surface and the top sensor measures the Earth's magnetic field whilst the lower sensor measures the same field but is also more affected by any localised buried field. The difference between the two sensors will relate to the strength of a magnetic field created by a buried feature, if no field is present the difference will be close to zero as the magnetic field measured by both sensors will be the same.

Factors affecting the magnetic survey may include soil type, local geology, previous human activity, disturbance from modern services etc.

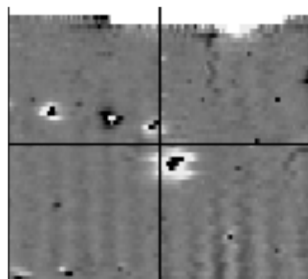
APPENDIX C – GLOSSARY OF MAGNETIC ANOMALIES

Bipolar



A bipolar anomaly is one that is composed of both a positive response and a negative response. It can be made up of any number of positive responses and negative responses. For example a pipeline consisting of alternating positive and negative anomalies is said to be bipolar. See also dipolar which has only one area of each polarity. The interpretation of the anomaly will depend on the magnitude of the magnetic field strength. A weak response may be caused by a clay field drain while a strong response will probably be caused by a metallic service.

Dipolar

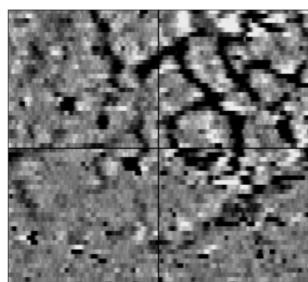


This consists of a single positive anomaly with an associated negative response. There should be no separation between the two polarities of response. These responses will be created by a single feature. The interpretation of the anomaly will depend on the magnitude of the magnetic measurements. A very strong anomaly is likely to be caused by a ferrous object.

Positive anomaly with associated negative response

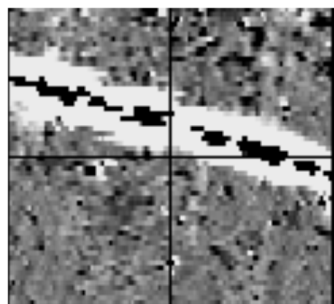
See bipolar and dipolar.

Positive linear



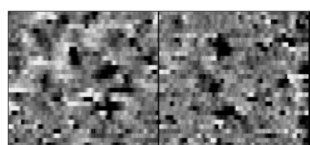
A linear response which is entirely positive in polarity. These are usually related to in-filled cut features where the fill material is magnetically enhanced compared to the surrounding matrix. They can be caused by ditches of an archaeological origin, but also former field boundaries, ploughing activity and some may even have a natural origin.

Positive linear anomaly with associated negative response



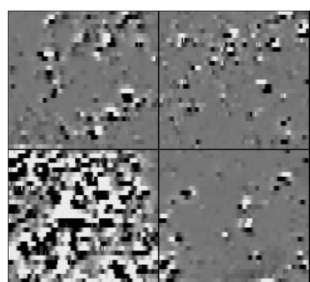
A positive linear anomaly which has a negative anomaly located adjacently. This will be caused by a single feature. In the example shown this is likely to be a single length of wire/cable probably relating to a modern service. Magnetically weaker responses may relate to earthwork style features and field boundaries.

Positive point/area



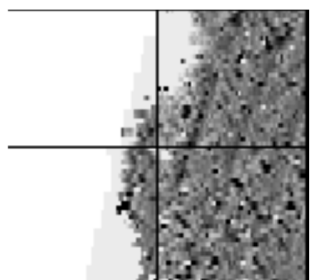
These are generally spatially small responses, perhaps covering just 3 or 4 reading nodes. They are entirely positive in polarity. Similar to positive linear anomalies they are generally caused by in-filled cut features. These include pits of an archaeological origin, possible tree bowls or other naturally occurring depressions in the ground.

Magnetic debris



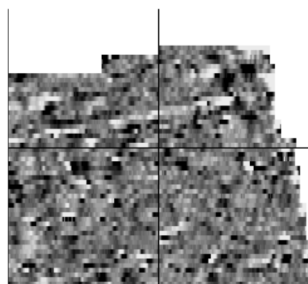
Magnetic debris consists of numerous dipolar responses spread over an area. If the amplitude of response is low ($\pm 3\text{nT}$) then the origin is likely to represent general ground disturbance with no clear cause, it may be related to something as simple as an area of dug or mixed earth. A stronger anomaly ($\pm 250\text{nT}$) is more indicative of a spread of ferrous debris. Moderately strong anomalies may be the result of a spread of thermoremanent material such as bricks or ash.

Magnetic disturbance



Magnetic disturbance is high amplitude and can be composed of either a bipolar anomaly, or a single polarity response. It is essentially associated with magnetic interference from modern ferrous structures such as fencing, vehicles or buildings, and as a result is commonly found around the perimeter of a site near to boundary fences.

Negative linear

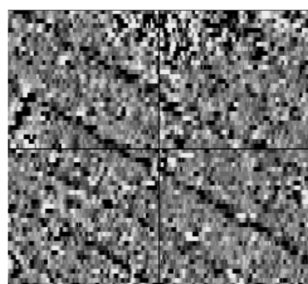


A linear response which is entirely negative in polarity. These are generally caused by earthen banks where material with a lower magnetic magnitude relative to the background top soil is built up. See also ploughing activity.

Negative point/area

Opposite to positive point anomalies these responses may be caused by raised areas or earthen banks. These could be of an archaeological origin or may have a natural origin.

Ploughing activity



Ploughing activity can often be visualised by a series of parallel linear anomalies. These can be of either positive polarity or negative polarity depending on site specifics. It can be difficult to distinguish between ancient ploughing and more modern ploughing. Clues such as the separation of each linear, straightness, strength of response and cross cutting relationships can be used to aid this, although none of these can be guaranteed to differentiate between different phases of activity.

Polarity

Term used to describe the measurement of the magnetic response. An anomaly can have a positive polarity (values above 0nT) and/or a negative polarity (values below 0nT).

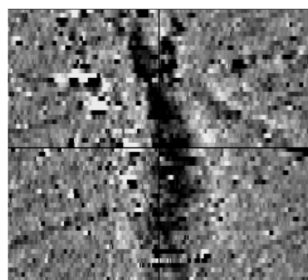
Strength of response

The amplitude of a magnetic response is an important factor in assigning an interpretation to a particular anomaly. For example a positive anomaly covering a 10m² area may have values up to around 3000nT, in which case it is likely to be caused by modern magnetic interference. However, the same size and shaped anomaly but with values up to only 4nT may have a natural origin. Colour plots are used to show the amplitude of response.

Thermoremanent response

A feature which has been subject to heat may result in it acquiring a magnetic field. This can be anything up to approximately +/-100 nT in value. These features include clay fired drains, brick, bonfires, kilns, hearths and even pottery. If the heat application has occurred in situ (e.g. a kiln) then the response is likely to be bipolar compared to if the heated objects have been disturbed and moved relative to each other, in which case they are more likely to take an irregular form and may display a debris style response (e.g. ash).

Weak background variations



Weakly magnetic wide scale variations within the data can sometimes be seen within sites. These usually have no specific structure but can often appear curvy and sinuous in form. They are likely to be the result of natural features, such as soil creep, dried up (or seasonal) streams. They can also be caused by changes in the underlying geology or soil type which may contain unpredictable distributions of magnetic minerals, and are usually apparent in several locations across a site.

STRATASCAN™



SUMO
Group
Member

STRATASCAN LTD

Vineyard House Upper Hook Road Upton upon Severn
Worcestershire WR8 0SA United Kingdom

T: 01684 592266 F: 01684 594142
info@stratascan.co.uk www.stratascan.co.uk