

**Amendments**

Issue No.	Date	Description
-	-	-
-	-	-

© Stratascan Ltd - 2014

Survey area

Site centred on NGR TL 685 463

Area unsurveyable due to trees/vegetation

**OS REFERENCING INFORMATION**

A	568054.59, 246783.67	P	568264.59, 245793.67
B	568054.59, 246423.67	Q	568414.59, 245913.67
C	568204.59, 246693.67	R	568624.59, 245913.67
D	568354.59, 246693.67	S	568714.59, 245793.67
E	568414.59, 246603.67	T	568894.59, 245793.67
F	568624.59, 246603.67	U	569074.59, 245613.67
G	568264.59, 246483.67	V	569074.59, 245313.67
H	568264.59, 246363.67	W	569224.59, 245493.67
I	568534.59, 246453.67	X	569464.59, 245493.67
J	568534.59, 246153.67	Y	569434.59, 245883.67
K	568174.59, 246063.67	Z	569044.59, 245883.67
L	568264.59, 246063.67	AA	568984.59, 245943.67
M	568174.59, 245853.67	AB	568984.59, 246273.67
N	568294.59, 245853.67	AC	569254.59, 246273.67
O	568054.59, 245793.67	AD	569254.59, 246093.67

Job No. 7397 Survey Date OCT 14

Client  
**CgMs CONSULTING LTD**

Project Title  
**GEOPHYSICAL SURVEY - HAVERHILL, SUFFOLK**

Subject  
**SITE LOCATION AND SURVEY AREA & REFERENCING**

**STRATASCAN™**  
GEOPHYSICS FOR ARCHAEOLOGY AND ENGINEERING

VINEYARD HOUSE T: 01684 592266  
UPTON UPON SEVERN E: info@stratascan.co.uk  
WR8 0SA www.stratascan.co.uk

**GPR ASSOCIATION**

**SUMO GROUP MEMBER**

ISO 9001 certified  
ISO 14001 certified

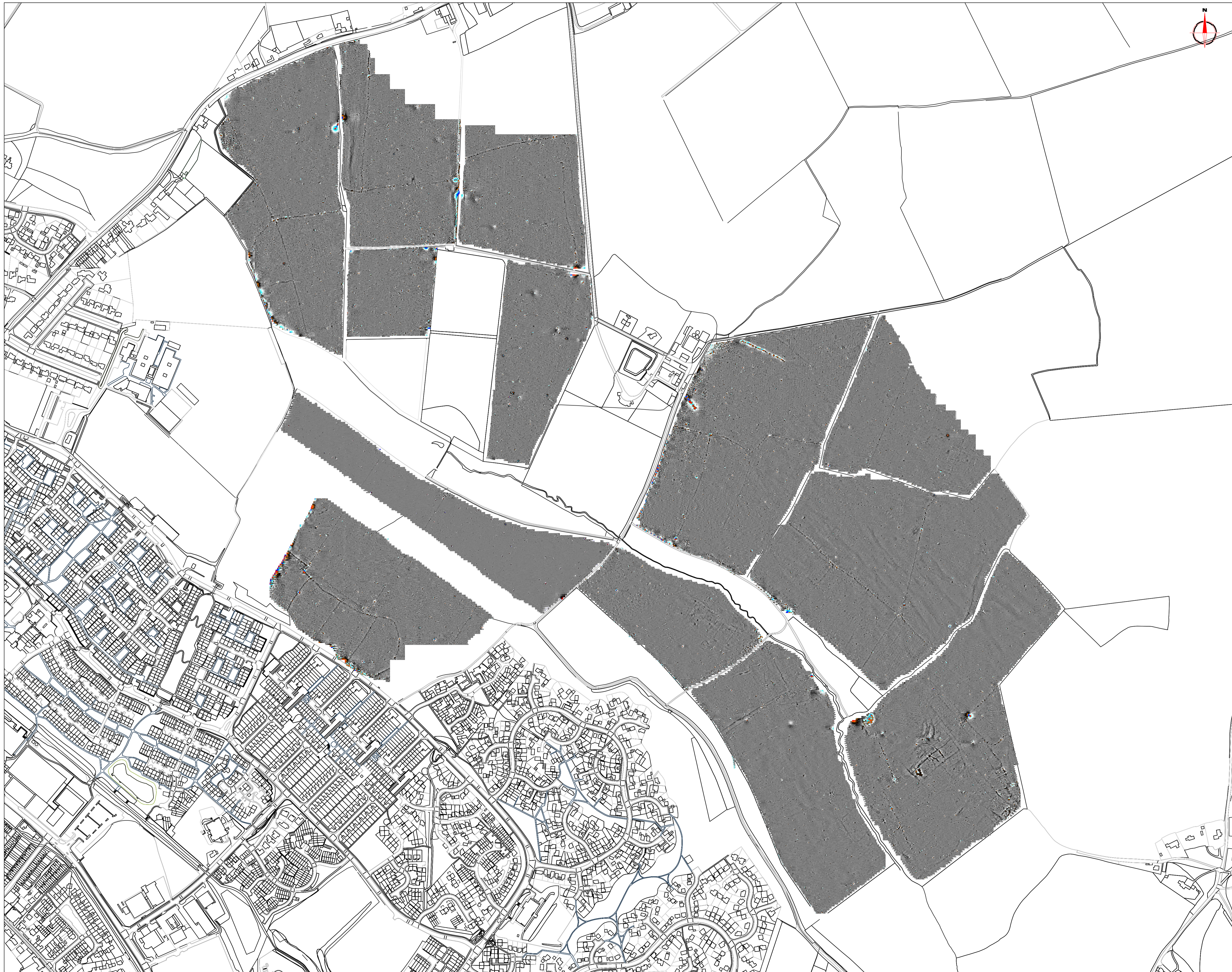
Scale 1:3500

Plot A1	Checked by DGE	Issue No. 01
Date DEC 14	Drawn by RD	Figure No. 01

Reproduced from Ordnance Survey's 1:25 000 map of 1998 with the permission of the controller of Her Majesty's Stationary Office. Crown Copyright reserved. Licence No. AL 50125A

Licencee:  
Stratascan Ltd,  
Vineyard House  
Upper Beak Road  
Upton Upon Severn  
WR8 0SA

OS 100km square = TL



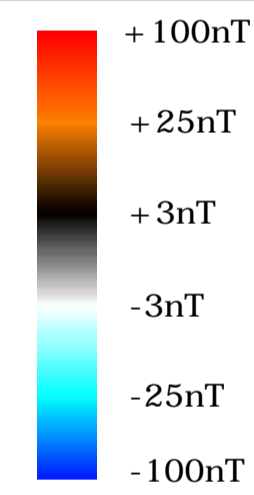
**Amendments**

Issue No.	Date	Description
-	-	-
-	-	-

© Stratascan Ltd - 2014

**Plotting parameters**

Maximum +100nT (red)  
Minimum -100nT (blue)



Job No.	7397	Survey Date	OCT 14
---------	------	-------------	--------

Client  
**CgMs CONSULTING LTD**

Project Title  
**GEOPHYSICAL SURVEY -  
HAVERHILL, SUFFOLK**

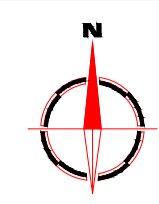
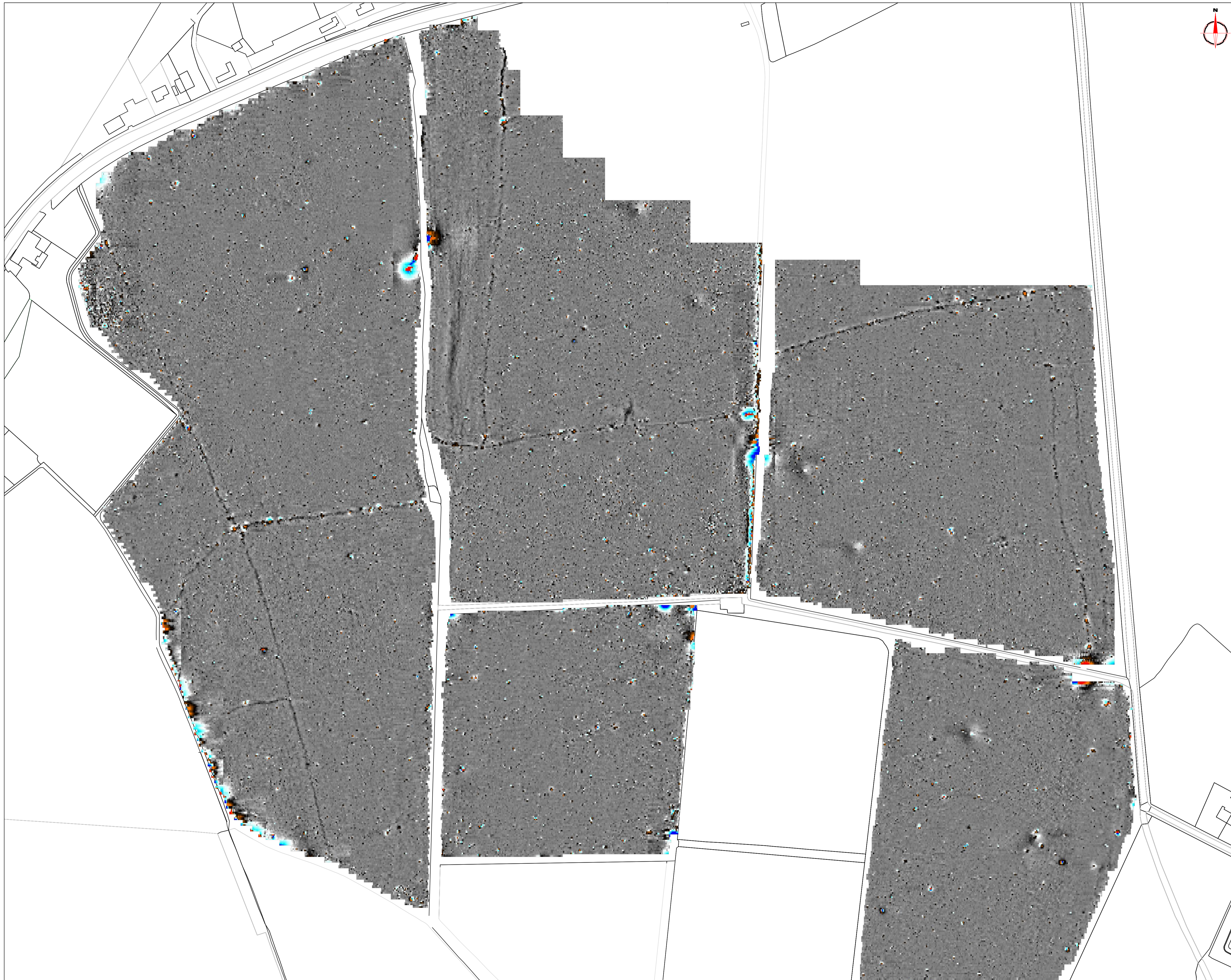
Subject  
**COLOUR PLOT OF  
GRADIOMETER DATA  
SHOWING EXTREME VALUES -  
OVERVIEW**

**STRATASCAN™**  
GEOPHYSICS FOR ARCHAEOLOGY  
AND ENGINEERING  
VINEYARD HOUSE T: 01684 592266  
UPTON UPON SEVERN E: info@stratascan.co.uk  
WR8 0SA www.stratascan.co.uk



Scale  
**1:3500**

Plot	A1	Checked by	DGE	Issue No.	01
Date	DEC 14	Drawn by	RD	Figure No.	02



**Amendments**

Issue No.	Date	Description
-	-	-
-	-	-

© Stratascan Ltd - 2014

Plotting parameters

Maximum + 100nT (red)  
Minimum - 100nT (blue)

Job No.	7397	Survey Date	OCT 14
---------	------	-------------	--------

Client  
**CgMs CONSULTING LTD**

Project Title  
**GEOPHYSICAL SURVEY -  
HAVERHILL, SUFFOLK**

Subject  
**COLOUR PLOT OF  
GRADIOMETER DATA  
SHOWING EXTREME VALUES -  
NORTH**

**STRATASCAN™**  
GEOPHYSICS FOR ARCHAEOLOGY  
AND ENGINEERING

VINEYARD HOUSE T: 01684 592266  
UPTON UPON SEVERN E: info@stratascan.co.uk  
WR8 0SA www.stratascan.co.uk

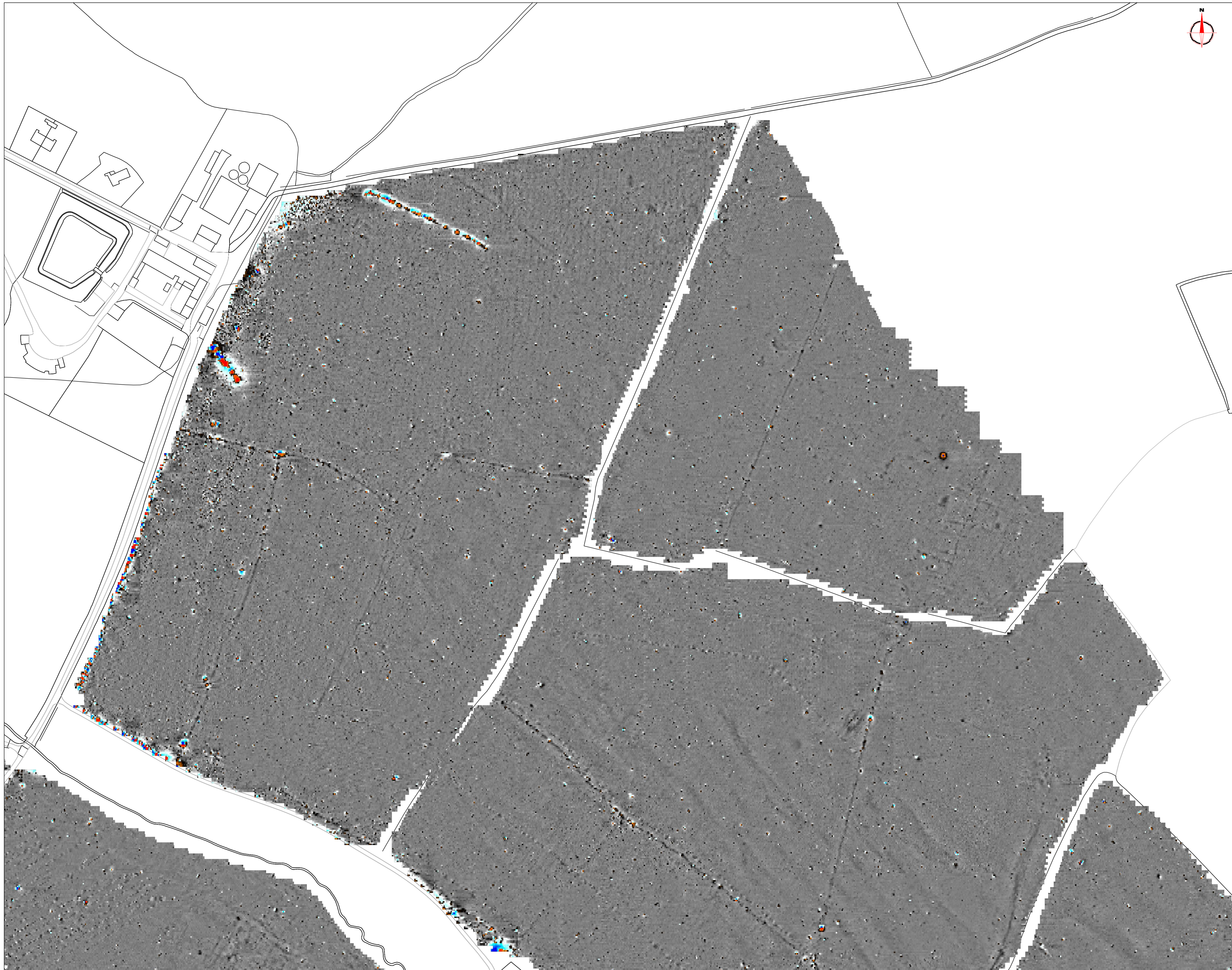
**GPR ASSOCIATION**

**SUMO** SUMO GROUP MEMBER  
ISO 9001 certified

**IMS** ISO 9001 certified

Scale 0m 10 20 30 40 50 60 70 80m  
**1:1250**

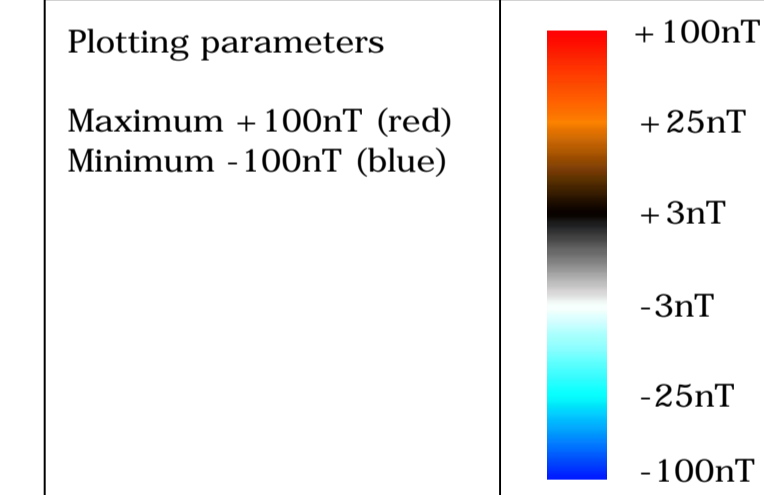
Plot	A1	Checked by	DGE	Issue No.	01
Date	DEC 14	Drawn by	RD	Figure No.	03



Amendments

Issue No.	Date	Description
-	-	-
-	-	-

© Stratascan Ltd - 2014



Job No.	7397	Survey Date	OCT 14
---------	------	-------------	--------

Client  
**CgMs CONSULTING LTD**

Project Title  
**GEOPHYSICAL SURVEY -  
HAVERHILL, SUFFOLK**

Subject  
**COLOUR PLOT OF  
GRADIOMETER DATA  
SHOWING EXTREME VALUES-  
EAST**

**STRATASCAN™**  
GEOPHYSICS FOR ARCHAEOLOGY  
AND ENGINEERING  
VINEYARD HOUSE T: 01684 592266  
UPTON UPON SEVERN E: info@stratascan.co.uk  
WR8 0SA www.stratascan.co.uk



Scale 0m 10 20 30 40 50 60 70 80m  
1: 1250

Plot	A1	Checked by	DGE	Issue No.	01
Date	DEC 14	Drawn by	RD	Figure No.	04



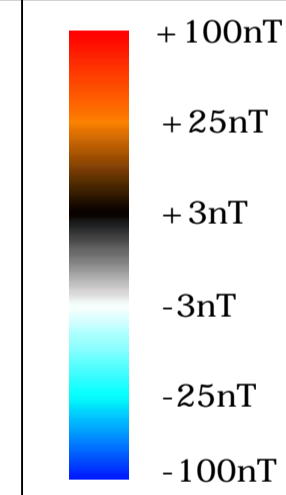
**Amendments**

Issue No.	Date	Description
-	-	-
-	-	-

© Stratascan Ltd - 2014

**Plotting parameters**

Maximum + 100nT (red)  
Minimum - 100nT (blue)



Job No.	7397	Survey Date	OCT 14
---------	------	-------------	--------

Client  
**CgMs CONSULTING LTD**

Project Title  
**GEOPHYSICAL SURVEY -  
HAVERHILL, SUFFOLK**

Subject  
**COLOUR PLOT OF  
GRADIOMETER DATA  
SHOWING EXTREME VALUES-  
SOUTH**

**STRATASCAN™**  
GEOPHYSICS FOR ARCHAEOLOGY  
AND ENGINEERING  
VINEYARD HOUSE T: 01684 592266  
UPTON UPON SEVERN E: info@stratascan.co.uk  
WR8 0SA www.stratascan.co.uk



Scale 0m 10 20 30 40 50 60 70 80m  
1: 1250

Plot	A1	Checked by	DGE	Issue No.	01
Date	DEC 14	Drawn by	RD	Figure No.	05



Amendments		
Issue No.	Date	Description
-	-	-
-	-	-
© Stratascan Ltd - 2014		

Plotting parameters	
Maximum +100nT (red)	
Minimum -100nT (blue)	

Job No.	7397	Survey Date	OCT 14
Client	CgMs CONSULTING LTD		
Project Title	GEOPHYSICAL SURVEY - HAVERHILL, SUFFOLK		
Subject	COLOUR PLOT OF GRADIOMETER DATA SHOWING EXTREME VALUES - WEST		

**STRATASCAN™**  
 GEOPHYSICS FOR ARCHAEOLOGY AND ENGINEERING  
 VINEYARD HOUSE UPTON UPON SEVERN WR8 0SA T: 01684 592266 E: info@stratascan.co.uk www.stratascan.co.uk

**GPR ASSOCIATION**  
**SUMO GROUP MEMBER**  
 ISO 9001 certified  
 ISO 14001 certified

Scale 0m 10 20 30 40 50 60 70 80m  
 1:1250

Plot	A1	Checked by	DGE	Issue No.	01
Date	DEC 14	Drawn by	RD	Figure No.	06



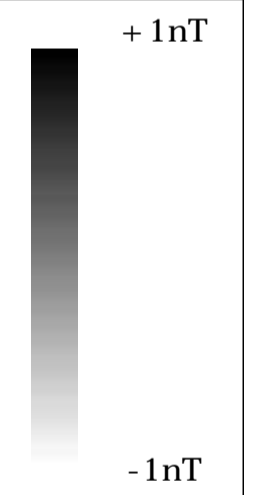
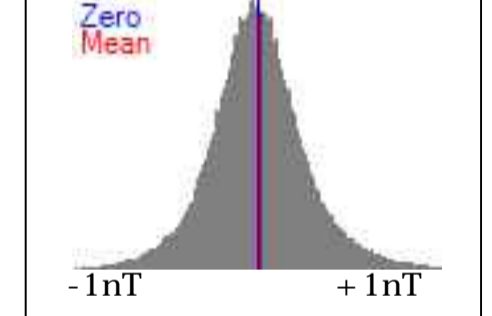
**Amendments**

Issue No.	Date	Description
-	-	-
-	-	-

© Stratascan Ltd - 2014

**Plotting parameters**

Maximum + 2nT (black)  
Minimum -2nT (white)



Job No. **7397** Survey Date **OCT 14**

Client  
**CgMs CONSULTING LTD**

Project Title  
**GEOPHYSICAL SURVEY -  
HAVERHILL, SUFFOLK**

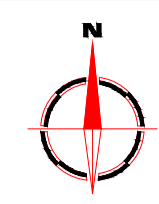
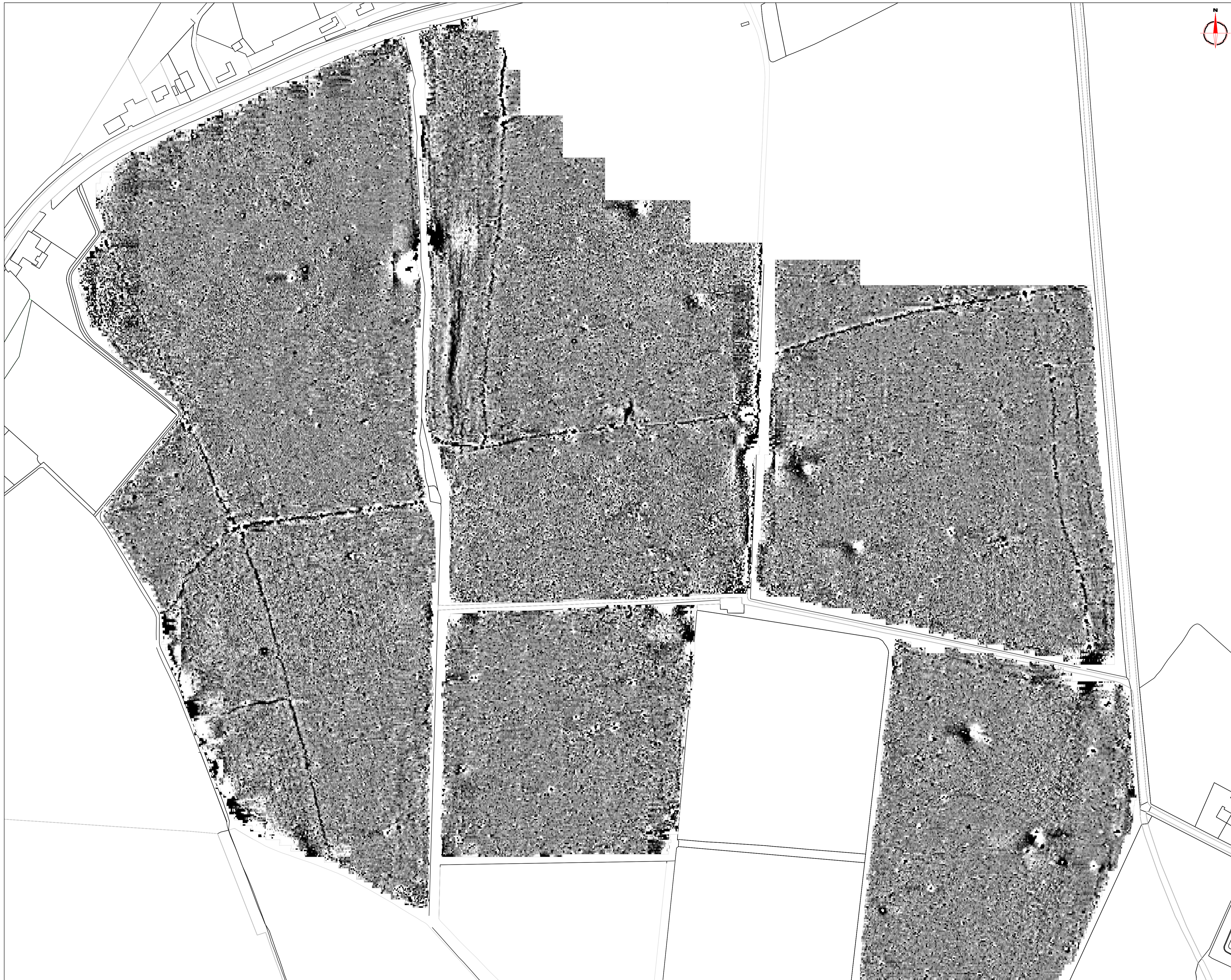
Subject  
**PLOT OF MINIMALLY  
PROCESSED GRADIOMETER  
DATA - OVERVIEW**

**STRATASCAN™**  
GEOPHYSICS FOR ARCHAEOLOGY  
AND ENGINEERING  
VINEYARD HOUSE T: 01684 592266  
UPTON UPON SEVERN E: info@stratascan.co.uk  
WR8 0SA www.stratascan.co.uk



Scale **1:3500**  
0m 30 60 90 120 150 180m

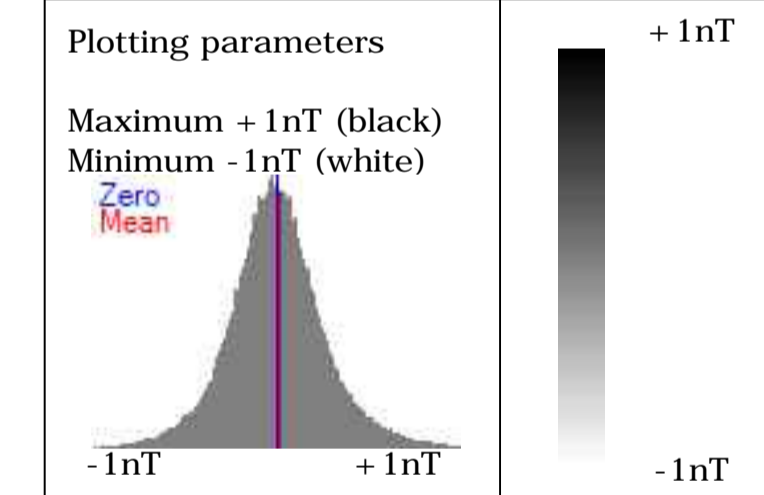
Plot <b>A1</b>	Checked by <b>DGE</b>	Issue No. <b>01</b>
Date <b>DEC 14</b>	Drawn by <b>RD</b>	Figure No. <b>07</b>



**Amendments**

Issue No.	Date	Description
-	-	-
-	-	-

© Stratascan Ltd - 2014



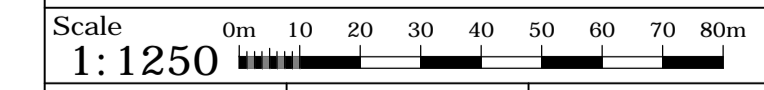
Job No.	7397	Survey Date	OCT 14
---------	------	-------------	--------

Client  
**CgMs CONSULTING LTD**

Project Title  
**GEOPHYSICAL SURVEY -  
HAVERHILL, SUFFOLK**

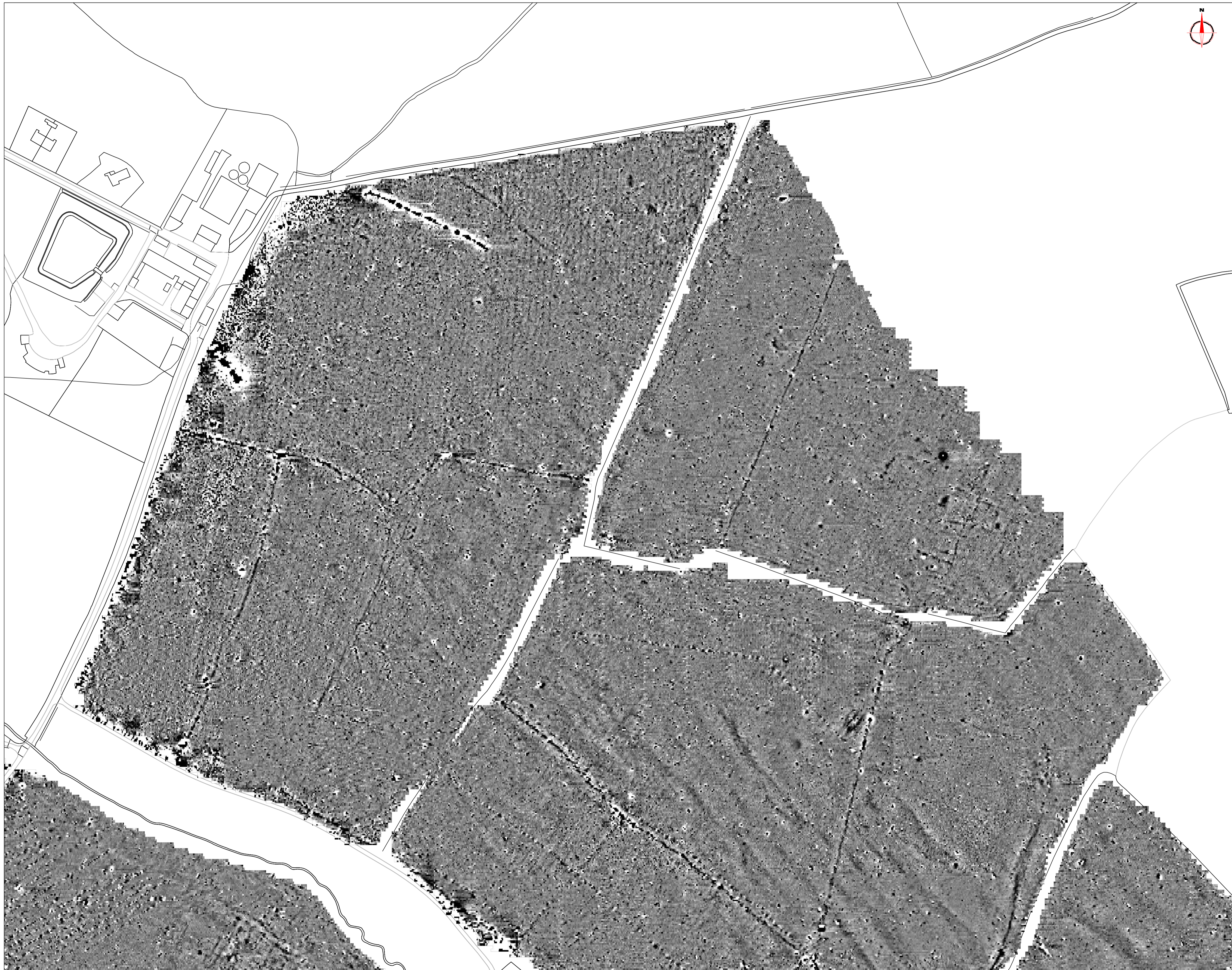
Subject  
**PLOT OF MINIMALLY  
PROCESSED GRADIOMETER  
DATA - NORTH**

**STRATASCAN™**  
GEOPHYSICS FOR ARCHAEOLOGY  
AND ENGINEERING  
VINEYARD HOUSE T: 01684 592266  
UPTON UPON SEVERN E: info@stratascan.co.uk  
WR8 0SA www.stratascan.co.uk



Plot	A1	Checked by	DGE	Issue No.	01
Date	DEC 14	Drawn by	RD	Figure No.	08

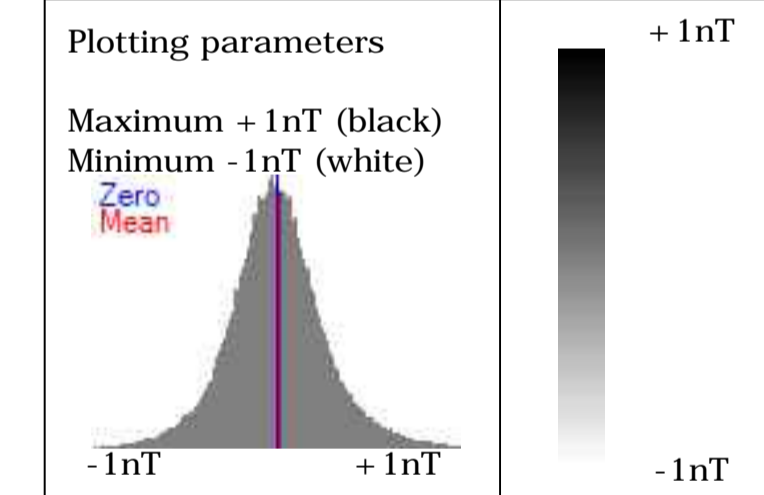




**Amendments**

Issue No.	Date	Description
-	-	-
-	-	-

© Stratascan Ltd - 2014



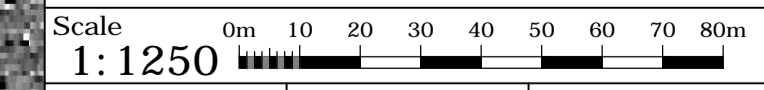
Job No.	7397	Survey Date	OCT 14
---------	------	-------------	--------

Client  
**CgMs CONSULTING LTD**

Project Title  
**GEOPHYSICAL SURVEY -  
 HAVERHILL, SUFFOLK**

Subject  
**PLOT OF MINIMALLY  
 PROCESSED GRADIOMETER  
 DATA - EAST**

**STRATASCAN™**  
 GEOPHYSICS FOR ARCHAEOLOGY  
 AND ENGINEERING  
 VINEYARD HOUSE T: 01684 592266  
 UPTON UPON SEVERN E: info@stratascan.co.uk  
 WR8 0SA www.stratascan.co.uk



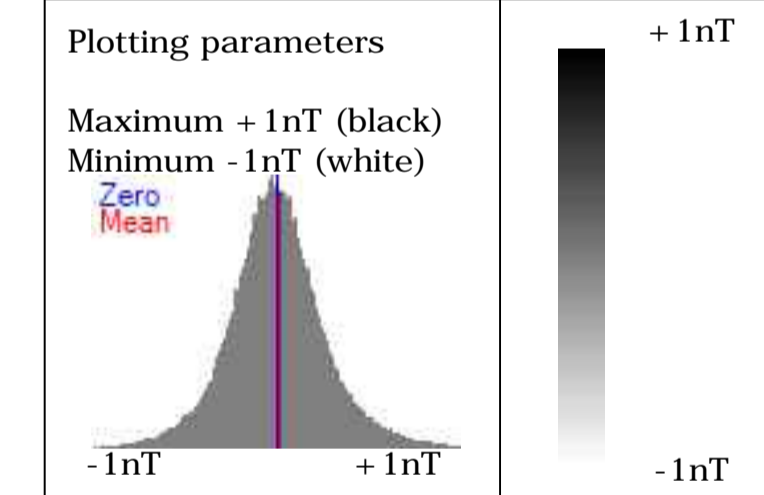
Plot	A1	Checked by	DGE	Issue No.	01
Date	DEC 14	Drawn by	RD	Figure No.	09



Amendments

Issue No.	Date	Description
-	-	-
-	-	-

© Stratascan Ltd - 2014



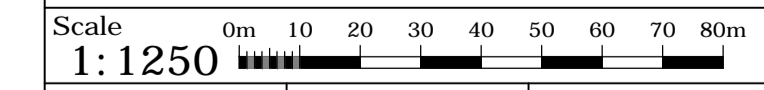
Job No.	7397	Survey Date	OCT 14
---------	------	-------------	--------

Client  
**CgMs CONSULTING LTD**

Project Title  
**GEOPHYSICAL SURVEY -  
HAVERHILL, SUFFOLK**

Subject  
**PLOT OF MINIMALLY  
PROCESSED GRADIOMETER  
DATA - SOUTH**

**STRATASCAN™**  
GEOPHYSICS FOR ARCHAEOLOGY  
AND ENGINEERING  
VINEYARD HOUSE T: 01684 592266  
UPTON UPON SEVERN E: info@stratascan.co.uk  
WR8 0SA www.stratascan.co.uk



Plot	A1	Checked by	DGE	Issue No.	01
Date	DEC 14	Drawn by	RD	Figure No.	10



Amendments		
Issue No.	Date	Description
-	-	-
-	-	-
© Stratascan Ltd - 2014		

Plotting parameters

Maximum + 1nT (black)  
Minimum - 1nT (white)  
Zero  
Mean

-1nT      0      +1nT

+1nT  
-1nT

Job No.	7397	Survey Date	OCT 14
Client	CgMs CONSULTING LTD		
Project Title	GEOPHYSICAL SURVEY - HAVERHILL, SUFFOLK		
Subject	PLOT OF MINIMALLY PROCESSED GRADIOMETER DATA - WEST		

**STRATASCAN™**  
GEOPHYSICS FOR ARCHAEOLOGY AND ENGINEERING

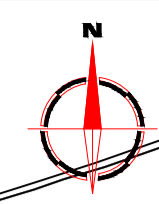
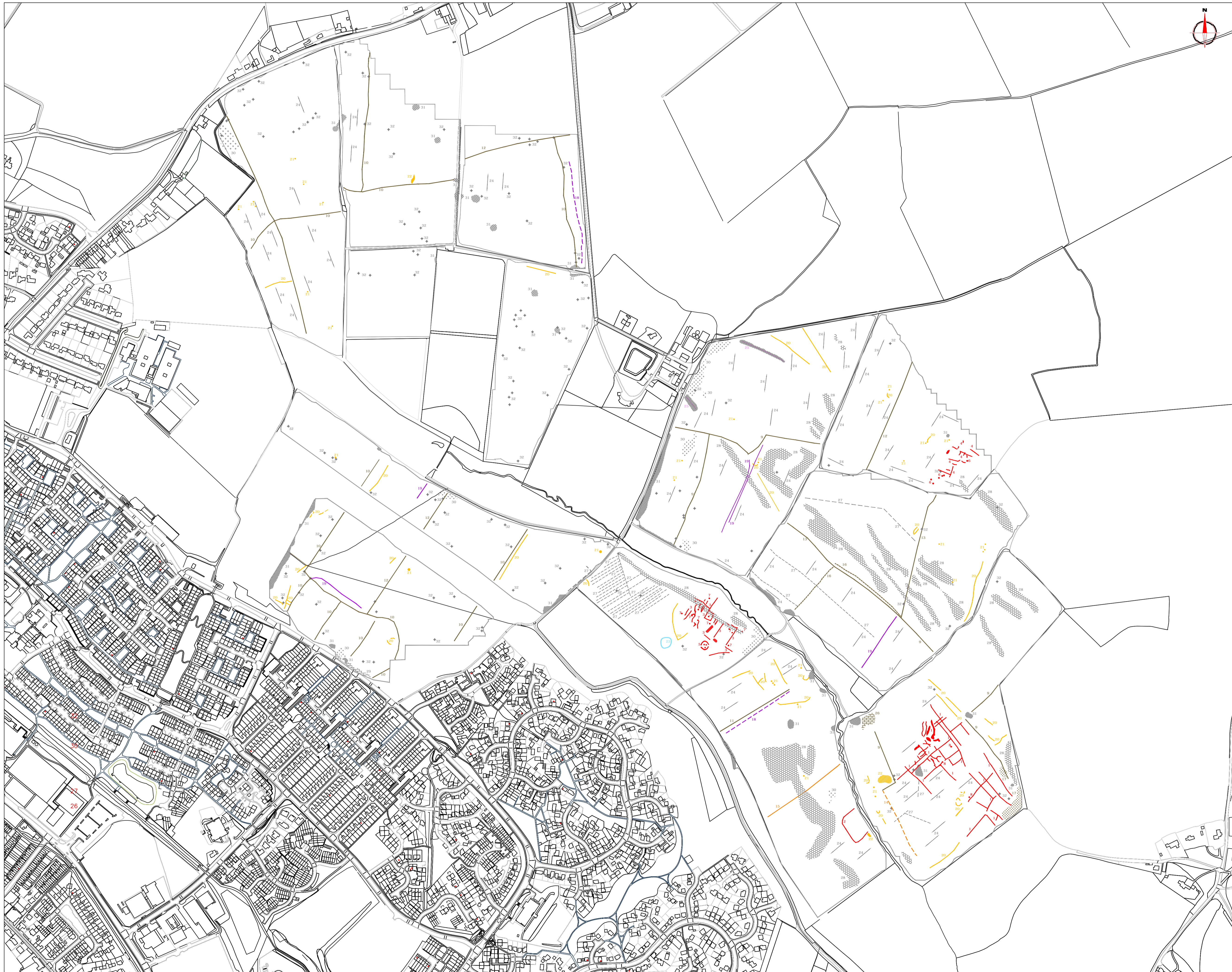
VINEYARD HOUSE      T: 01684 592266  
UPTON UPON SEVERN      E: info@stratascan.co.uk  
WR8 0SA      www.stratascan.co.uk

**GPR ASSOCIATION**  
**SUMO GROUP MEMBER**

ISO 9001 certified  
ISO 14001 certified

Scale 0m 10 20 30 40 50 60 70 80m  
1: 1250

Plot	A1	Checked by	DGE	Issue No.	01
Date	DEC 14	Drawn by	RD	Figure No.	11



**Amendments**

Issue No.	Date	Description
-	-	-
-	-	-

© Stratascan Ltd - 2014

**KEY**

**PROBABLE ARCHAEOLOGY**

- Positive anomaly / weak positive anomaly - probable cut feature of archaeological origin
- Negative anomaly / weak negative anomaly - probable bank or earthwork of archaeological origin
- Linear anomaly related to former field boundary present on available historic mapping pre-1900
- Linear anomaly related to former trackway present on available mapping pre-1900
- Widely spaced curving parallel linear anomalies - probably related to ridge-and-furrow
- Linear anomaly related to former footpath visible on historic mapping
- Linear anomaly visible as a defiled boundary on historic mapping from 1876 to 1981
- Scattered magnetic debris related to former farm buildings visible on historic mapping from 1876 to 1892
- Positive linear anomaly - probable former track way not visible on historic mapping.
- Positive linear anomaly - probable former field boundary not present on available historic mapping

**POSSIBLE ARCHAEOLOGY**

- Positive anomaly / weak positive anomaly - possible cut feature of archaeological origin
- Negative anomaly / weak negative anomaly - possible bank or earthwork of archaeological origin
- Moderate strength discrete anomaly - possible thermoremanent feature

**OTHER ANOMALIES**

- Closely spaced parallel linear anomalies - probably related to agricultural activity such as ploughing
- Linear anomaly - probably related to pipe, cable or other modern service
- Strong magnetic debris related to former pond present on available mapping from 1876 to 1981
- Linear anomaly - possibly related to land drain
- Magnetic disturbance associated with nearby metal object such as service or field boundary
- Strong magnetic debris - possible disturbed or made ground
- Scattered magnetic debris
- Area of amorphous magnetic variation - probable natural (e.g. geological or pedological) origin
- Magnetic spike - probable ferrous object

Job No.	7397	Survey Date	OCT 14
---------	------	-------------	--------

Client  
**CgMs CONSULTING LTD**

Project Title  
**GEOPHYSICAL SURVEY - HAVERHILL, SUFFOLK**

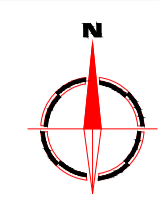
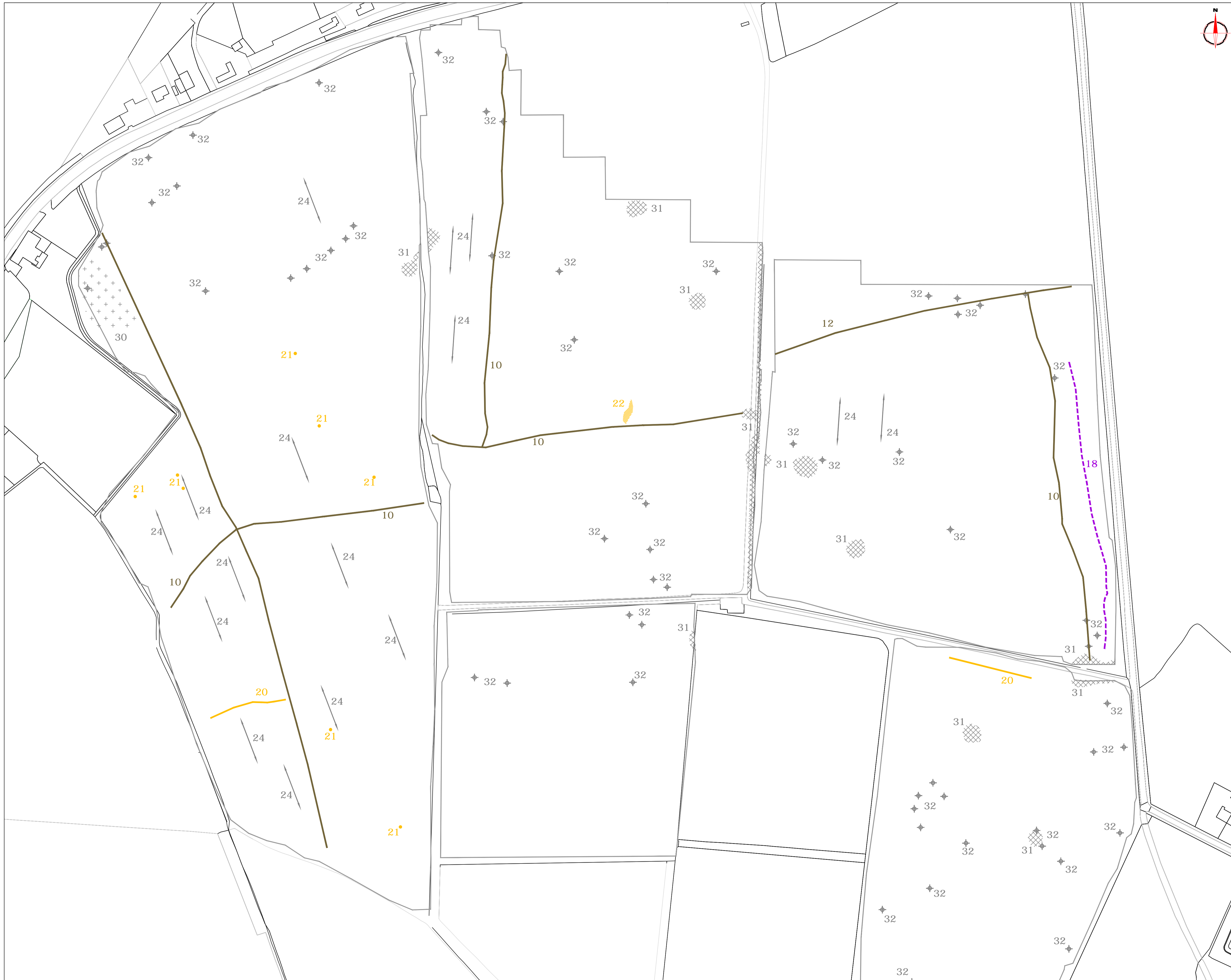
Subject  
**ABSTRACTION AND INTERPRETATION OF GRADIOMETER ANOMALIES - OVERVIEW**

**STRATASCAN™**  
GEOPHYSICS FOR ARCHAEOLOGY AND ENGINEERING  
VINEYARD HOUSE T: 01684 592266  
UPTON UPON SEVERN E: info@stratascan.co.uk  
WR8 0SA www.stratascan.co.uk



Scale  
**1:3500**

Plot	A1	Checked by	DGE	Issue No.	01
Date	DEC 14	Drawn by	RD	Figure No.	12



**Amendments**

Issue No.	Date	Description
-	-	-
-	-	-

© Stratascan Ltd - 2014

**KEY**

- PROBABLE ARCHAEOLOGY**
- Positive anomaly / weak positive anomaly - probable cut feature of archaeological origin
  - Negative anomaly / weak negative anomaly - probable bank or earthwork of archaeological origin
  - Linear anomaly related to former field boundary present on available historic mapping pre-1900
  - Linear anomaly related to former trackway present on available mapping pre-1900
  - Widely spaced curving parallel linear anomalies - probably related to ridge-and-furrow
  - Linear anomaly related to former footpath visible on historic mapping
  - Linear anomaly visible as a defiled boundary on historic mapping from 1876 to 1981
  - Scattered magnetic debris related to former farm buildings visible on historic mapping from 1876 to 1892
  - Positive linear anomaly - probable former track way not visible on historic mapping
  - Positive linear anomaly - probable former field boundary not present on available historic mapping

- POSSIBLE ARCHAEOLOGY**
- Positive anomaly / weak positive anomaly - possible cut feature of archaeological origin
  - Negative anomaly / weak negative anomaly - possible bank or earthwork of archaeological origin
  - Moderate strength discrete anomaly - possible thermoremanent feature

- OTHER ANOMALIES**
- Closely spaced parallel linear anomalies - probably related to agricultural activity such as ploughing
  - Linear anomaly - probably related to pipe, cable or other modern service
  - Strong magnetic debris related to former pond present on available mapping from 1876 to 1981
  - Linear anomaly - possibly related to land drain
  - Magnetic disturbance associated with nearby metal object such as service or field boundary
  - Strong magnetic debris - possible disturbed or made ground
  - Scattered magnetic debris
  - Area of amorphous magnetic variation - probable natural (e.g. geological or pedological) origin
  - Magnetic spike - probable ferrous object

Job No.	7397	Survey Date	OCT 14
---------	------	-------------	--------

Client  
**CgMs CONSULTING LTD**

Project Title  
**GEOPHYSICAL SURVEY - HAVERHILL, SUFFOLK**

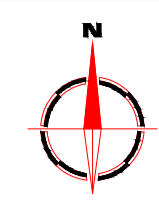
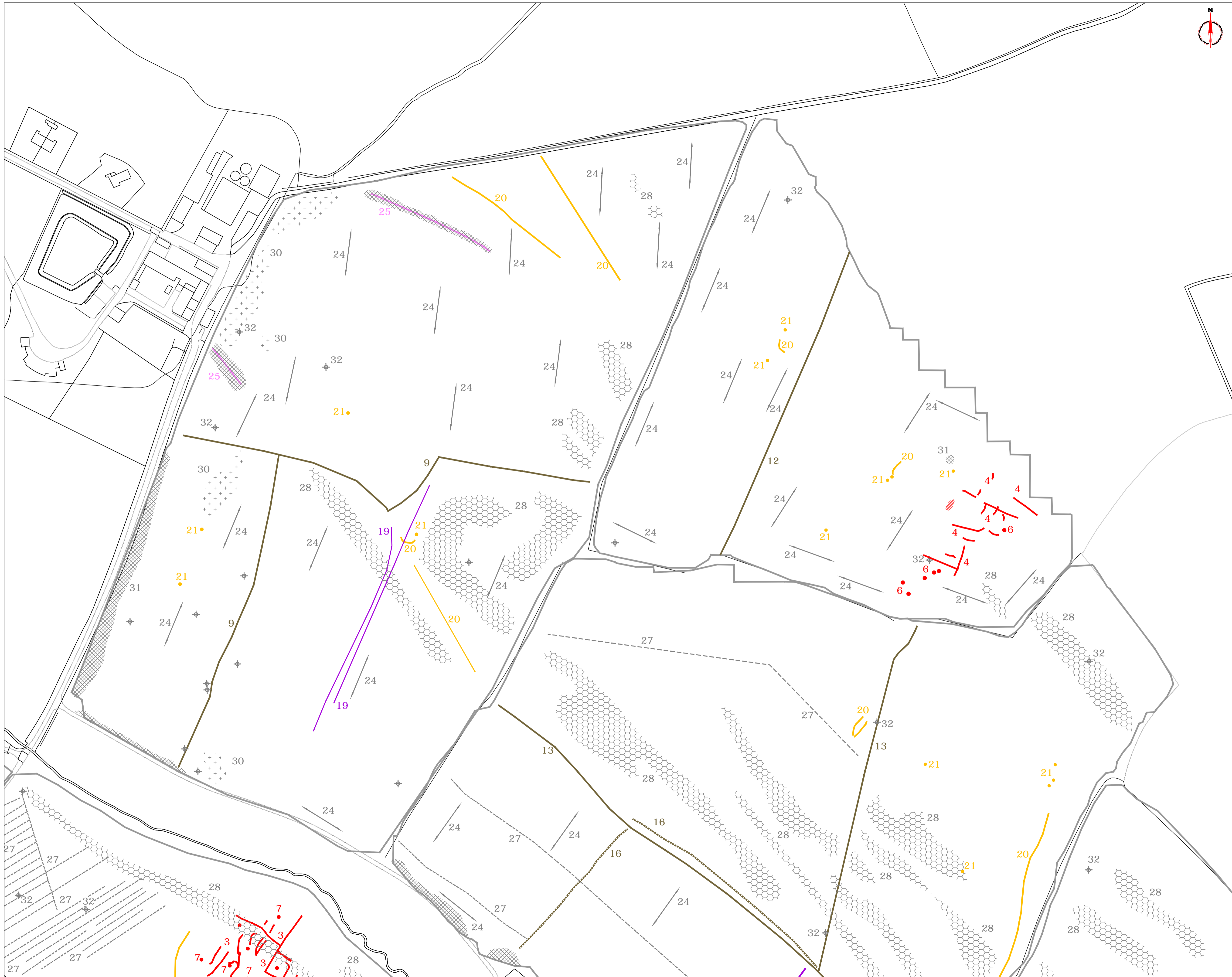
Subject  
**ABSTRACTION AND INTERPRETATION OF GRADIOMETER ANOMALIES - NORTH**

**STRATASCAN™**  
GEOPHYSICS FOR ARCHAEOLOGY AND ENGINEERING  
VINEYARD HOUSE UPTON UPON SEVERN WR8 OSA T: 01684 592266 E: info@stratascan.co.uk www.stratascan.co.uk



Scale  
1:1250

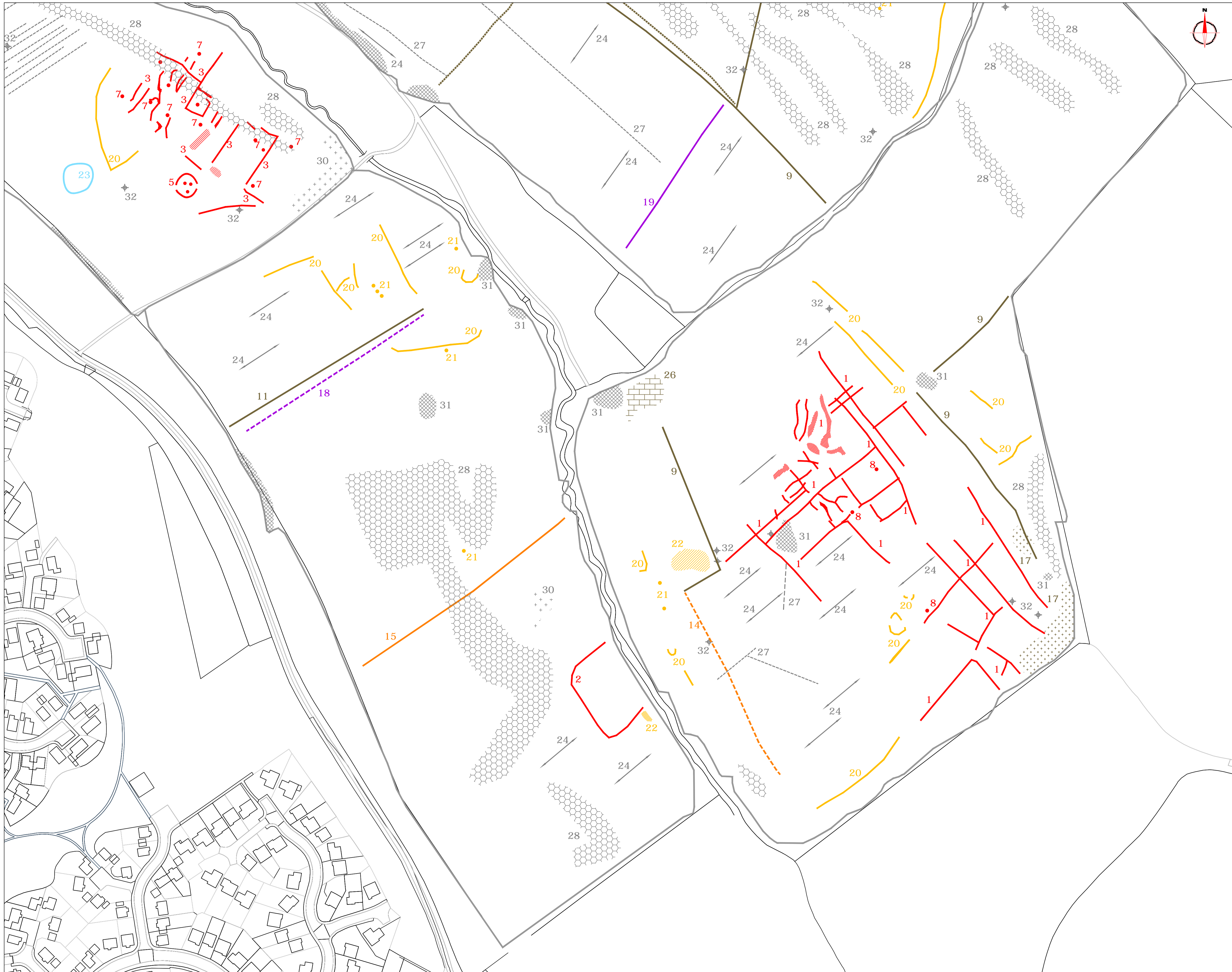
Plot	A1	Checked by	DGE	Issue No.	01
Date	DEC 14	Drawn by	RD	Figure No.	13



Amendments		
Issue No.	Date	Description
-	-	-
-	-	-
© Stratascan Ltd - 2014		

KEY		
<b>PROBABLE ARCHAEOLOGY</b>		
	Positive anomaly / weak positive anomaly - probable cut feature of archaeological origin	
	Negative anomaly / weak negative anomaly - probable bank or earthwork of archaeological origin	
	Linear anomaly related to former field boundary present on available historic mapping pre-1900	
	Linear anomaly related to former trackway present on available mapping pre-1900	
	Widely spaced curving parallel linear anomalies - probably related to ridge-and-furrow	
	Linear anomaly related to former footpath visible on historic mapping	
	Linear anomaly visible as a defiled boundary on historic mapping from 1876 to 1981	
	Scattered magnetic debris related to former farm buildings visible on historic mapping from 1876 to 1892	
	Positive linear anomaly - probable former track way not visible on historic mapping	
	Positive linear anomaly - probable former field boundary not present on available historic mapping	
<b>POSSIBLE ARCHAEOLOGY</b>		
	Positive anomaly / weak positive anomaly - possible cut feature of archaeological origin	
	Negative anomaly / weak negative anomaly - possible bank or earthwork of archaeological origin	
	Moderate strength discrete anomaly - possible thermoremanent feature	
<b>OTHER ANOMALIES</b>		
	Closely spaced parallel linear anomalies - probably related to agricultural activity such as ploughing	
	Linear anomaly - probably related to pipe, cable or other modern service	
	Strong magnetic debris related to former pond present on available mapping from 1876 to 1981	
	Linear anomaly - possibly related to land drain	
	Magnetic disturbance associated with nearby metal object such as service or field boundary	
	Strong magnetic debris - possible disturbed or made ground	
	Scattered magnetic debris	
	Area of amorphous magnetic variation - probable natural (e.g. geological or pedological) origin	
	Magnetic spike - probable ferrous object	
Job No.	Survey Date	
7397	OCT 14	
Client		
CgMs CONSULTING LTD		
Project Title		
GEOPHYSICAL SURVEY - HAVERHILL, SUFFOLK		
Subject		
ABSTRACTION AND INTERPRETATION OF GRADIOMETER ANOMALIES - EAST		
<b>STRATASCAN™</b>		
GEOPHYSICS FOR ARCHAEOLOGY AND ENGINEERING		
VINEYARD HOUSE T: 01684 592266		
UPTON UPON SEVERN E: info@stratascan.co.uk		
WR8 0SA www.stratascan.co.uk		
Scale 0m 10 20 30 40 50 60 70 80m		
1: 1250		
Plot	Checked by	Issue No.
A1	DGE	01
Date	Drawn by	Figure No.
DEC 14	RD	14



Amendments		
Issue No.	Date	Description
-	-	-
-	-	-
© Stratascan Ltd - 2014		

### KEY

**PROBABLE ARCHAEOLOGY**

- Positive anomaly / weak positive anomaly - probable cut feature of archaeological origin
- Negative anomaly / weak negative anomaly - probable bank or earthwork of archaeological origin
- Linear anomaly related to former field boundary present on available on historic mapping pre-1900
- Linear anomaly related to former trackway present on available mapping pre-1900
- Widely spaced curving parallel linear anomalies - probably related to ridge-and-furrow
- Linear anomaly related to former footpath visible on historic mapping
- Linear anomaly visible as a defiled boundary on historic mapping from 1876 to 1981
- + Scattered magnetic debris related to former farm buildings visible on historic mapping from 1876 to 1892
- Positive linear anomaly - probable former track way not visible on historic mapping.
- Positive linear anomaly - probable former field boundary not present on available historic mapping

**POSSIBLE ARCHAEOLOGY**

- Positive anomaly / weak positive anomaly - possible cut feature of archaeological origin
- Negative anomaly / weak negative anomaly - possible bank or earthwork of archaeological origin
- Moderate strength discrete anomaly - possible thermoremanent feature

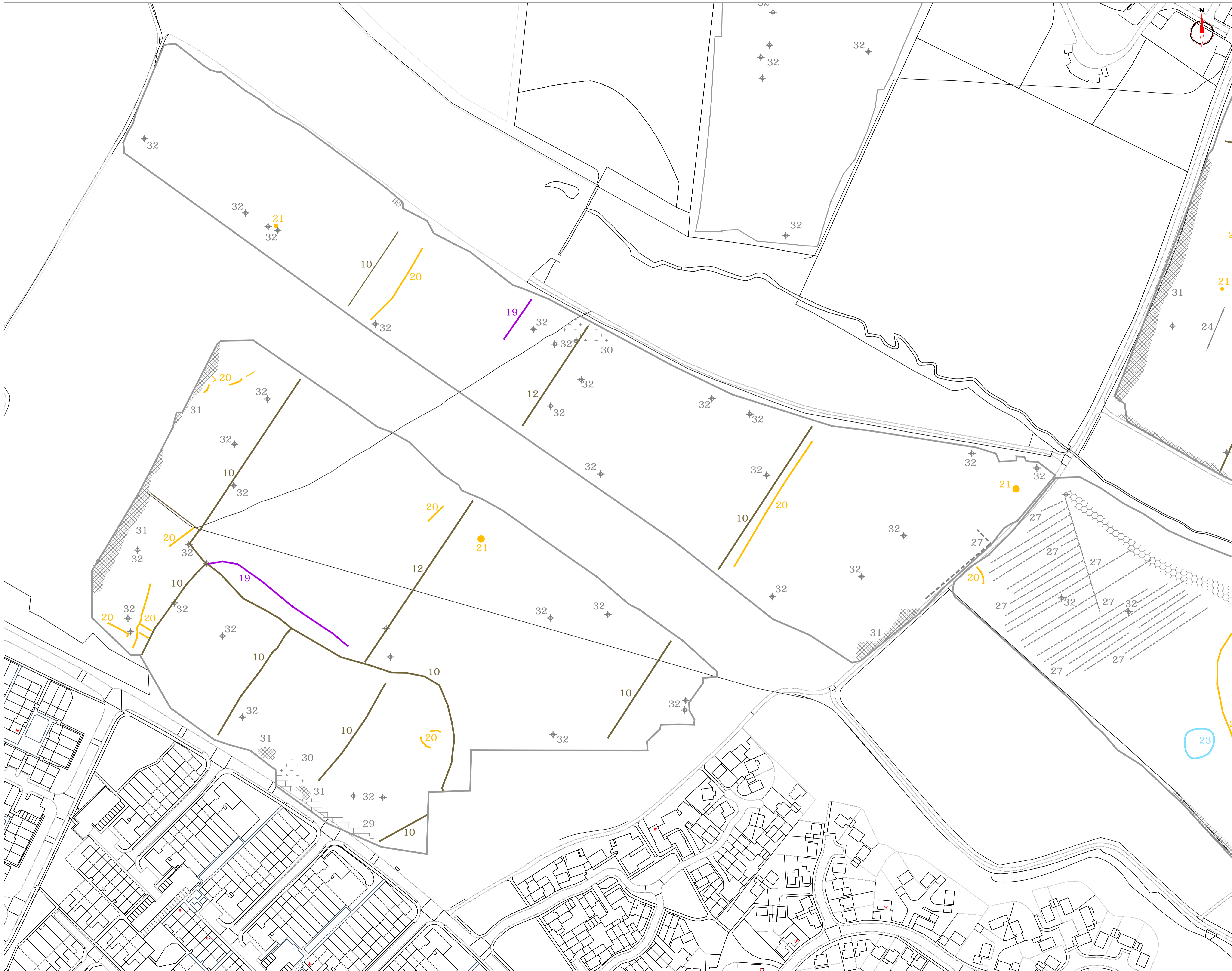
**OTHER ANOMALIES**

- Closely spaced parallel linear anomalies - probably related to agricultural activity such as ploughing
- Linear anomaly - probably related to pipe, cable or other modern service
- Strong magnetic debris related to former pond present on available mapping from 1876 to 1981
- Linear anomaly - possibly related to land drain
- Magnetic disturbance associated with nearby metal object such as service or field boundary
- Strong magnetic debris - possible disturbed or made ground
- + Scattered magnetic debris
- Area of amorphous magnetic variation - probable natural (e.g. geological or pedological) origin
- + Magnetic spike - probable ferrous object

Job No.	7397	Survey Date	OCT 14
Client			
<b>CgMs CONSULTING LTD</b>			
Project Title			
<b>GEOPHYSICAL SURVEY - HAVERHILL, SUFFOLK</b>			
Subject			
<b>ABSTRACTION AND INTERPRETATION OF GRADIOMETER ANOMALIES - SOUTH</b>			
<b>STRATASCAN™</b>			
GEOPHYSICS FOR ARCHAEOLOGY AND ENGINEERING			
VINEYARD HOUSE		T: 01684 592266	
UPTON UPON SEVERN		E: info@stratascan.co.uk	
WR8 0SA		www.stratascan.co.uk	

Scale 0m 10 20 30 40 50 60 70 80m  
**1:1250**

Plot	A1	Checked by	DGE	Issue No.	01
Date	DEC 14	Drawn by	RD	Figure No.	15



Amendments		
Issue No.	Date	Description
-	-	-
-	-	-
© Stratascan Ltd - 2014		

**KEY**

**PROBABLE ARCHAEOLOGY**

- Positive anomaly / weak positive anomaly - probable cut feature of archaeological origin
- Negative anomaly / weak negative anomaly - probable bank or earthwork of archaeological origin
- Linear anomaly related to former field boundary present on available historic mapping pre-1900
- Linear anomaly related to former trackway present on available mapping pre-1900
- Widely spaced curving parallel linear anomalies - probably related to ridge-and-furrow
- Linear anomaly related to former footpath visible on historic mapping
- Linear anomaly visible as a defiled boundary on historic mapping from 1876 to 1981
- + Scattered magnetic debris related to former farm buildings visible on historic mapping from 1876 to 1892
- Positive linear anomaly - probable former track way not visible on historic mapping.
- Positive linear anomaly - probable former field boundary not present on available historic mapping

**POSSIBLE ARCHAEOLOGY**

- Positive anomaly / weak positive anomaly - possible cut feature of archaeological origin
- Negative anomaly / weak negative anomaly - possible bank or earthwork of archaeological origin
- Moderate strength discrete anomaly - possible thermoremanent feature

**OTHER ANOMALIES**

- Closely spaced parallel linear anomalies - probably related to agricultural activity such as ploughing
- Linear anomaly - probably related to pipe, cable or other modern service
- Strong magnetic debris related to former pond present on available mapping from 1876 to 1981
- Linear anomaly - possibly related to land drain
- Magnetic disturbance associated with nearby metal object such as service or field boundary
- Strong magnetic debris - possible disturbed or made ground
- + Scattered magnetic debris
- Area of amorphous magnetic variation - probable natural (e.g. geological or pedological) origin
- ◆ Magnetic spike - probable ferrous object

Job No.	7397	Survey Date	OCT 14
Client			
<b>CgMs CONSULTING LTD</b>			
Project Title			
<b>GEOPHYSICAL SURVEY - HAVERHILL, SUFFOLK</b>			
Subject			
<b>ABSTRACTION AND INTERPRETATION OF GRADIOMETER ANOMALIES - WEST</b>			

**STRATASCAN™**  
GEOPHYSICS FOR ARCHAEOLOGY AND ENGINEERING

VINEYARD HOUSE T: 01684 592266  
UPTON UPON SEVERN E: info@stratascan.co.uk  
WR8 0SA www.stratascan.co.uk

**GPR ASSOCIATION** **SUMO GROUP MEMBER**

Scale 0m 10 20 30 40 50 60 70 80m  
1:1250

Plot	A1	Checked by	DGE	Issue No.	01
Date	DEC 14	Drawn by	RD	Figure No.	16