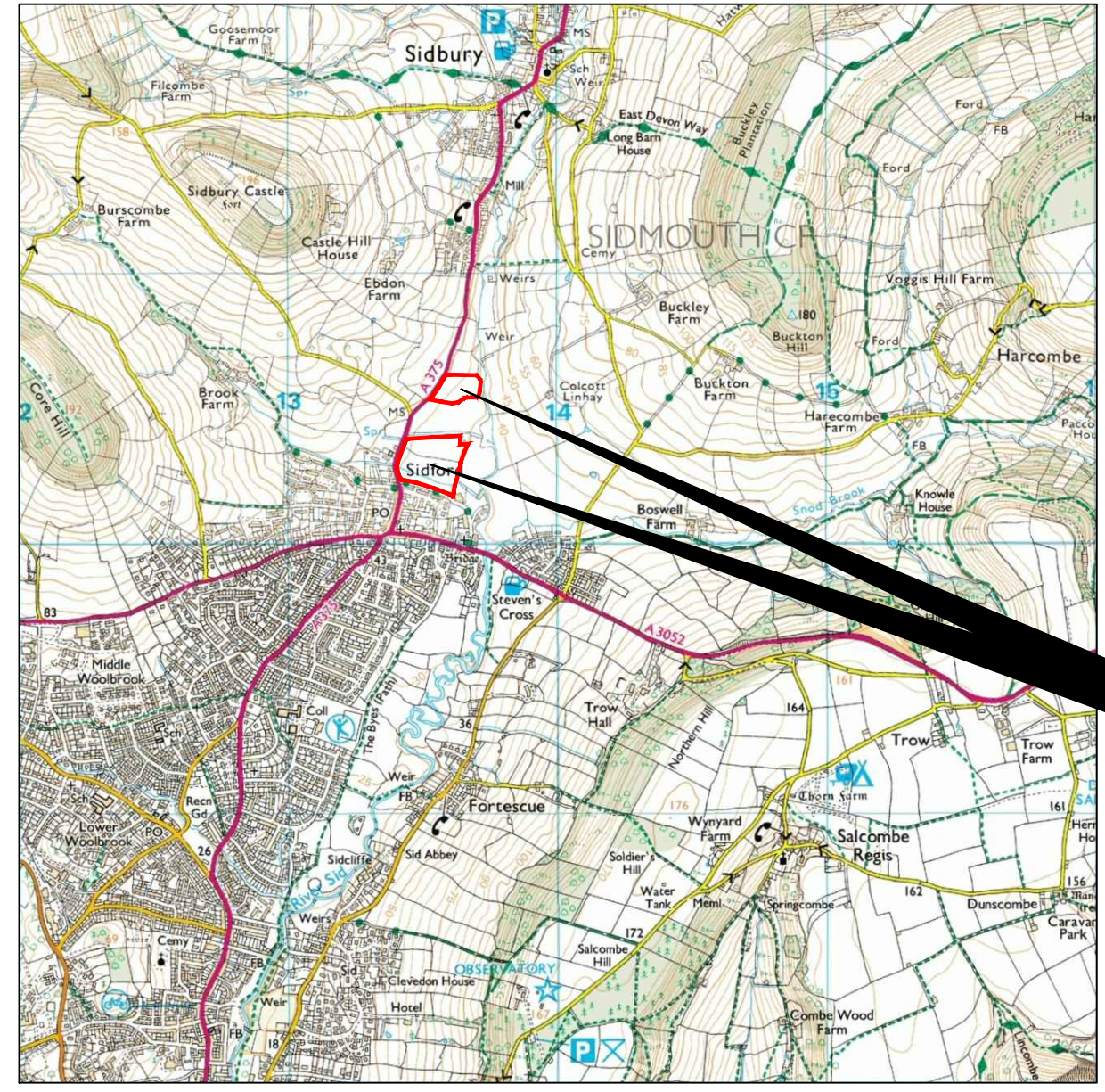


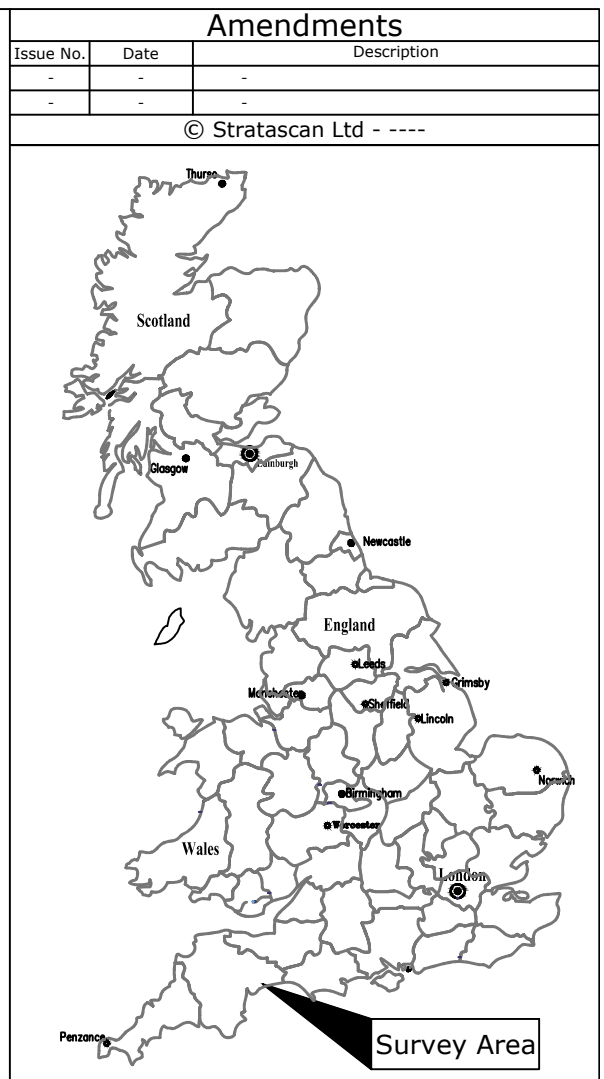
Reproduced from Ordnance Survey's 1:25 000 map of 1998 with the permission of the controller of Her Majesty's Stationery Office. Crown Copyright reserved. Licence No: AL 50125A
 Licensee:
 Stratascan Ltd.
 Vineyard House
 Upper Hook Road
 Upton Upon Severn
 WR8 0SA
 OS 100km square = SY



92
91
90
89
88



12 13 14 15 16



Site centred on NGR SY 134 903

Client
CgMs CONSULTING LTD

Project Title Job No. J9498
LAND AT TWO BRIDGES ROAD, SIDFORD, DEVON

Subject
LOCATION PLAN OF SURVEY AREA

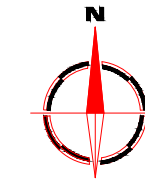
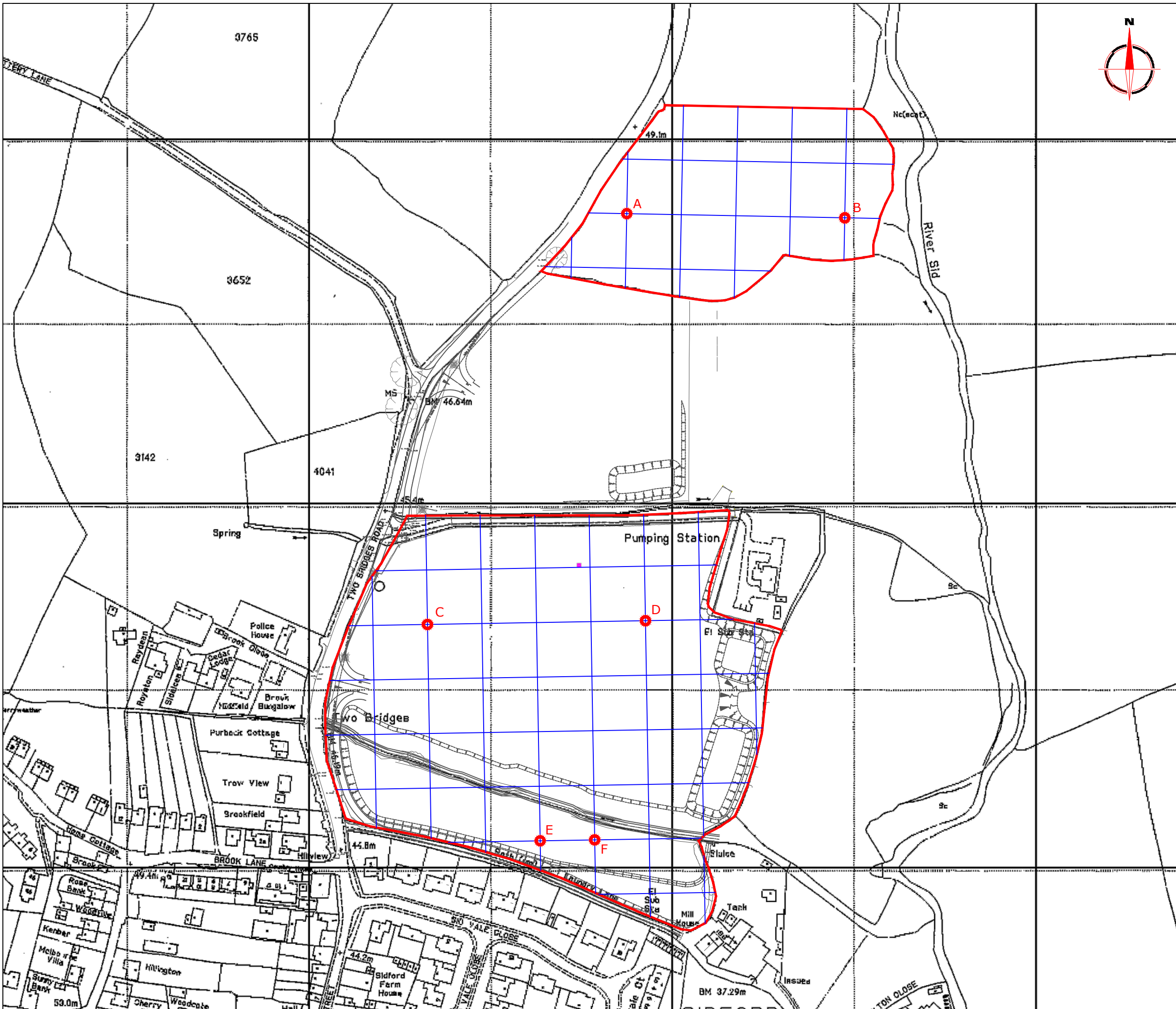
STRATASCANTM
 GEOPHYSICS FOR ARCHAEOLOGY AND ENGINEERING

VINEYARD HOUSE T: 01684 592266
 UPTON UPON SEVERN E: info@stratascan.co.uk
 WR8 0SA www.stratascan.co.uk



Scale 1:25000
 0m 500m 1000m

Plot A3	Checked by DGE	Issue No. 01
Survey date FEB 16	Drawn by TR	Figure No. 01



Amendments

Issue No.	Date	Description
-	-	-
-	-	-

© Stratascan Ltd - ----

OS GRID REFERENCES

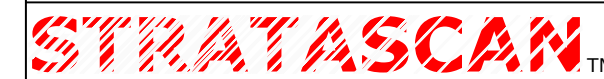
A	313574.93, 090558.83
B	313694.91, 090556.51
C	313465.24, 090332.89
D	313585.23, 090334.94
E	313527.28, 090213.93
F	313557.27, 090214.44

Client
CgMs CONSULTING LTD

Project Title
LAND AT TWO BRIDGES ROAD, SIDFORD, DEVON

Job No. J9498

Subject
LOCATION OF SURVEY GRIDS AND REFERENCING



GEOPHYSICS FOR ARCHAEOLOGY AND ENGINEERING

VINEYARD HOUSE T: 01684 592266
 UPTON UPON SEVERN E: info@stratascan.co.uk
 WR8 0SA www.stratascan.co.uk



SUMO GROUP MEMBER



Scale 1:2000
 0m 20 40 60 80 100m

Plot A3	Checked by DGE	Issue No. 01
Survey date FEB 16	Drawn by TR	Figure No. 02



Amendments

Issue No.	Date	Description
-	-	-
-	-	-

© Stratascan Ltd - ----

Plotting parameters

Maximum +100nT (red)
Minimum -100nT (blue)

+100nT
+25nT
+3nT
-3nT
-25nT
-100nT

Client
CgMs CONSULTING LTD

Project Title Job No. J9498
**LAND AT TWO BRIDGES ROAD,
SIDFORD, DEVON**

Subject
**COLOUR PLOT OF GRADIOMETER
DATA SHOWING EXTREME VALUES -
OVERVIEW**

STRATASCAN™
GEOPHYSICS FOR ARCHAEOLOGY
AND ENGINEERING

VINEYARD HOUSE T: 01684 592266
UPTON UPON SEVERN E: info@stratascan.co.uk
WR8 0SA www.stratascan.co.uk

GPR ASSOCIATION

SUMO GROUP MEMBER

ims ISO 9001 certified
ims ISO 14001 certified

Scale 1:2000
0m 20 40 60 80 100m

Plot A3	Checked by DGE	Issue No. 01
Survey date FEB 16	Drawn by TR	Figure No. 03



Amendments

Issue No.	Date	Description
-	-	-
-	-	-

© Stratascan Ltd - ----

Plotting parameters

Maximum +100nT (red)
Minimum -100nT (blue)

Client
CgMs CONSULTING LTD

Project Title Job No. J9498
**LAND AT TWO BRIDGES ROAD,
SIDFORD, DEVON**

Subject
**COLOUR PLOT OF GRADIOMETER
DATA SHOWING EXTREME VALUES -
NORTH**

STRATASCAN™
GEOPHYSICS FOR ARCHAEOLOGY
AND ENGINEERING

VINEYARD HOUSE T: 01684 592266
UPTON UPON SEVERN E: info@stratascan.co.uk
WR8 0SA www.stratascan.co.uk

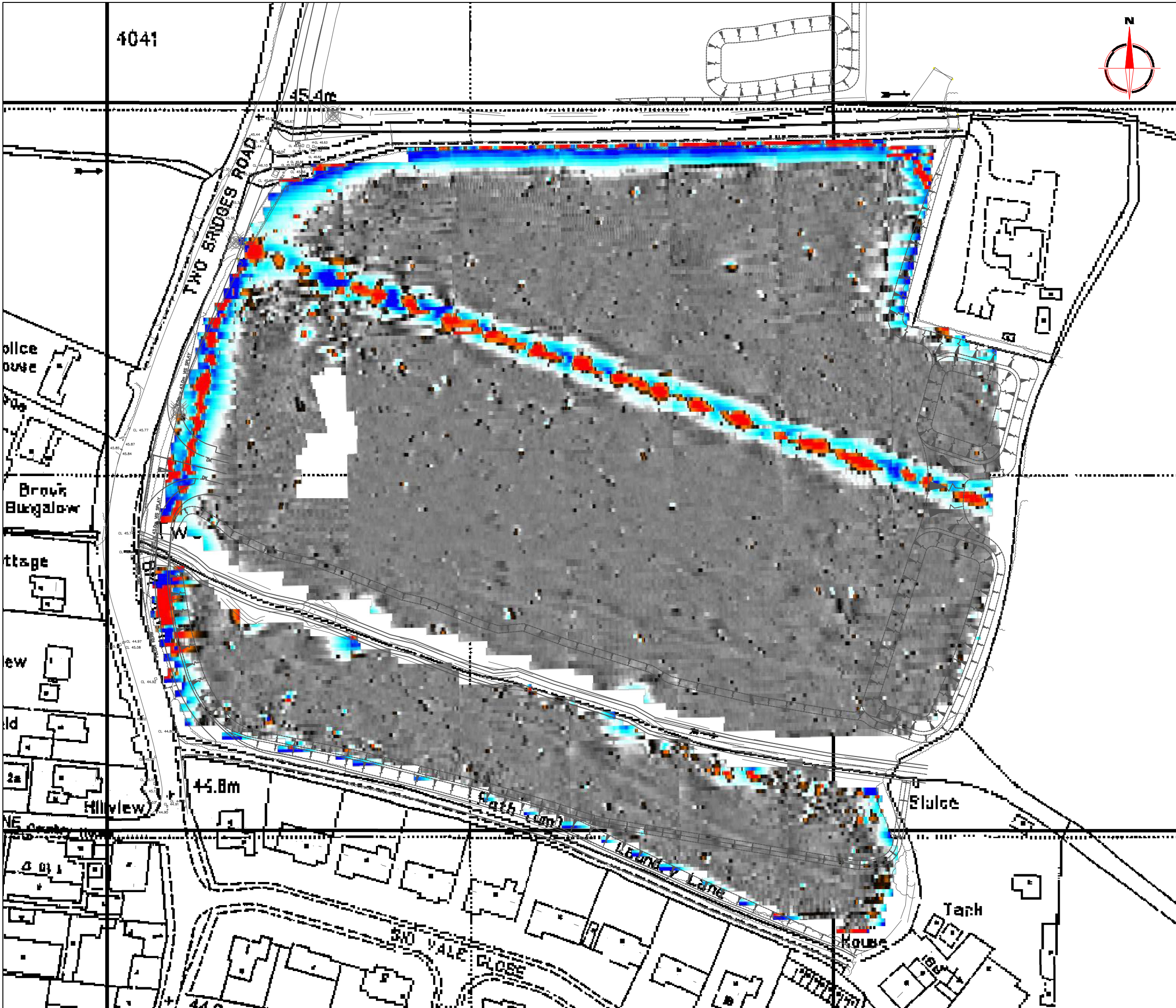
EUROPEAN GPR ASSOCIATION

SUMO GROUP MEMBER

ims ISO 9001 certified UKAS
ims ISO 14001 certified UKAS

Scale 1:1000

Plot A3	Checked by DGE	Issue No. 01
Survey date FEB 16	Drawn by TR	Figure No. 04



Amendments

Issue No.	Date	Description
-	-	-
-	-	-

© Stratascan Ltd - ----

Plotting parameters

Maximum +100nT (red)
Minimum -100nT (blue)

+100nT
+25nT
+3nT
-3nT
-25nT
-100nT

Client
CgMs CONSULTING LTD

Project Title Job No. J9498
**LAND AT TWO BRIDGES ROAD,
SIDFORD, DEVON**

Subject
**COLOUR PLOT OF GRADIOMETER
DATA SHOWING EXTREME VALUES -
SOUTH**

STRATASCAN™
GEOPHYSICS FOR ARCHAEOLOGY
AND ENGINEERING

VINEYARD HOUSE T: 01684 592266
UPTON UPON SEVERN E: info@stratascan.co.uk
WR8 0SA www.stratascan.co.uk

EUROPEAN GPR ASSOCIATION

SUMO SUMO GROUP MEMBER

IMS ISO 9001 certified

UKAS ISO 14001 certified

Scale 1:1000

Plot A3	Checked by DGE	Issue No. 01
Survey date FEB 16	Drawn by TR	Figure No. 05



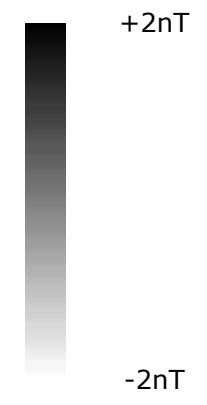
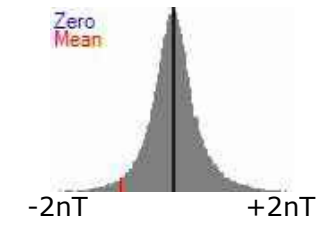
Amendments

Issue No.	Date	Description
-	-	-
-	-	-

© Stratascan Ltd - ----

Plotting parameters

Maximum +2nT (black)
Minimum -2nT (white)



Client

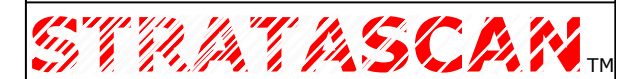
CgMs CONSULTING LTD

Project Title Job No. J9498

**LAND AT TWO BRIDGES ROAD,
SIDFORD, DEVON**

Subject

**PLOT OF MINIMALLY PROCESSED
GRADIOMETER DATA - OVERVIEW**



**GEOPHYSICS FOR ARCHAEOLOGY
AND ENGINEERING**

VINEYARD HOUSE T: 01684 592266
UPTON UPON SEVERN E: info@stratascan.co.uk
WR8 0SA www.stratascan.co.uk



SUMO
GROUP
MEMBER



Scale 1:2000 0m 20 40 60 80 100m

Plot A3	Checked by DGE	Issue No. 01
Survey date FEB 16	Drawn by TR	Figure No. 06



Amendments

Issue No.	Date	Description
-	-	-
-	-	-

© Stratascan Ltd - ----

Plotting parameters

Maximum +2nT (black)
Minimum -2nT (white)

Client
CgMs CONSULTING LTD

Project Title Job No. J9498
**LAND AT TWO BRIDGES ROAD,
SIDFORD, DEVON**

Subject
**PLOT OF MINIMALLY PROCESSED
GRADIOMETER DATA - NORTH**

STRATASCAN™
GEOPHYSICS FOR ARCHAEOLOGY
AND ENGINEERING

VINEYARD HOUSE T: 01684 592266
UPTON UPON SEVERN E: info@stratascan.co.uk
WR8 0SA www.stratascan.co.uk

GPR ASSOCIATION

SUMO GROUP MEMBER

ims ISO 9001 certified

ims ISO 14001 certified

Scale 1:1000

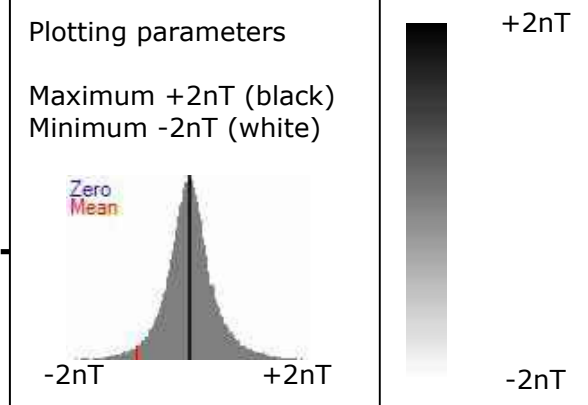
Plot A3	Checked by DGE	Issue No. 01
Survey date FEB 16	Drawn by TR	Figure No. 07



Amendments

Issue No.	Date	Description
-	-	-
-	-	-

© Stratascan Ltd - ----



Client
CgMs CONSULTING LTD

Project Title Job No. J9498
**LAND AT TWO BRIDGES ROAD,
SIDFORD, DEVON**

Subject
**PLOT OF MINIMALLY PROCESSED
GRADIOMETER DATA - SOUTH**

STRATASCAN™
GEOPHYSICS FOR ARCHAEOLOGY
AND ENGINEERING

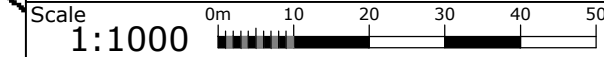
VINEYARD HOUSE T: 01684 592266
UPTON UPON SEVERN E: info@stratascan.co.uk
WR8 0SA www.stratascan.co.uk

EUROPEAN GPR ASSOCIATION

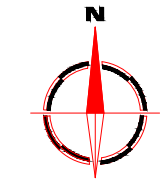
SUMO SUMO GROUP MEMBER

IMS ISO 9001 certified

IMS ISO 14001 certified



Plot A3	Checked by DGE	Issue No. 01
Survey date FEB 16	Drawn by TR	Figure No. 08



Amendments

Issue No.	Date	Description
-	-	-
-	-	-

© Stratascan Ltd - ----

PROBABLE ARCHAEOLOGY

- Positive anomaly / weak positive anomaly - probable cut feature of archaeological origin
- Negative anomaly / weak negative anomaly - probable bank or earthwork of archaeological origin

POSSIBLE ARCHAEOLOGY

- Positive anomaly / weak positive anomaly - possible cut feature of archaeological origin
- Negative anomaly / weak negative anomaly - possible bank or earthwork of archaeological origin

MEDIEVAL/POST-MEDIEVAL AGRICULTURE

- Widely spaced curving parallel linear anomalies - probably related to ridge-and-furrow
- Closely spaced parallel linear anomalies - probably related to agricultural activity such as ploughing
- Linear anomaly - probably related to a former field boundary not present on available mapping
- Linear anomaly - related to a former field boundary present on available mapping

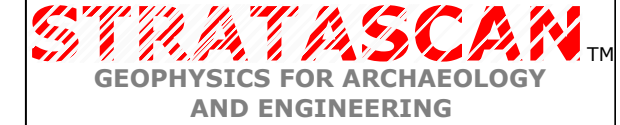
OTHER ANOMALIES

- Linear anomaly - probably related to pipe, cable or other modern service
- Linear anomaly - possibly related to land drain
- Magnetic disturbance associated with nearby metal object such as service or field boundary
- Strong magnetic debris - possible disturbed or made ground
- Weak disturbance from over head cables
- Area of amorphous magnetic variation - probable natural (e.g. geological or pedological) origin
- Magnetic spike - probable ferrous object

Client
CgMs CONSULTING LTD

Project Title Job No. J9498
**LAND AT TWO BRIDGES ROAD,
SIDFORD, DEVON**

Subject
**ABSTRACTION AND INTERPRETATION OF
GRADIOMETER ANOMALIES -
OVERVIEW**



VINEYARD HOUSE T: 01684 592266
UPTON UPON SEVERN E: info@stratascan.co.uk
WR8 0SA www.stratascan.co.uk

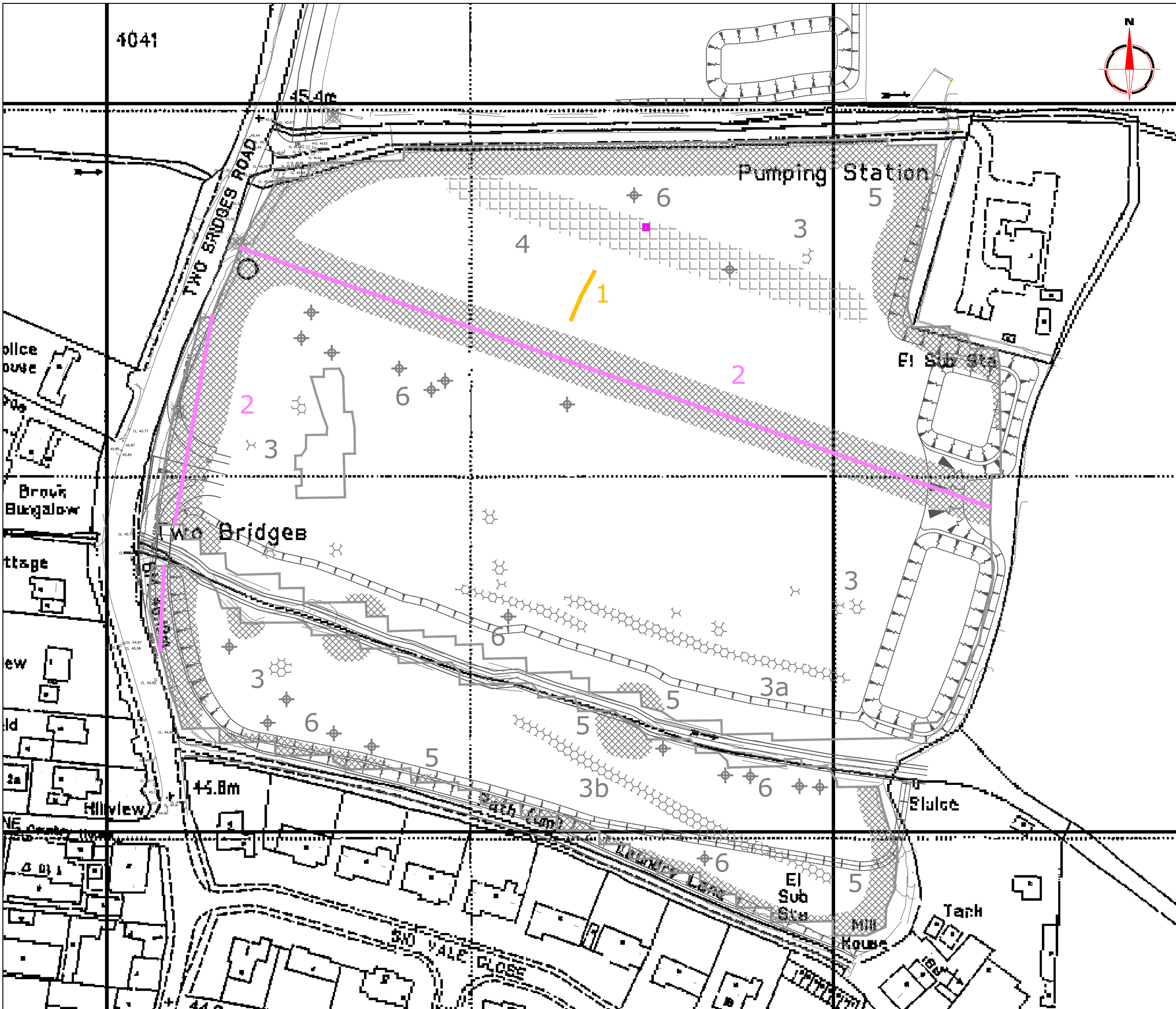


Scale 1:2000

Plot A3	Checked by DGE	Issue No. 01
Survey date FEB 16	Drawn by TR	Figure No. 09



Amendments		
Issue No.	Date	Description
-	-	-
-	-	-
© Stratascan Ltd - ----		
PROBABLE ARCHAEOLOGY		
	Positive anomaly / weak positive anomaly - probable cut feature of archaeological origin	
	Negative anomaly / weak negative anomaly - probable bank or earthwork of archaeological origin	
POSSIBLE ARCHAEOLOGY		
	Positive anomaly / weak positive anomaly - possible cut feature of archaeological origin	
	Negative anomaly / weak negative anomaly - possible bank or earthwork of archaeological origin	
MEDIEVAL/POST-MEDIEVAL AGRICULTURE		
	Widely spaced curving parallel linear anomalies - probably related to ridge-and-furrow	
	Closely spaced parallel linear anomalies - probably related to agricultural activity such as ploughing	
	Linear anomaly - probably related to a former field boundary not present on available mapping	
	Linear anomaly - related to a former field boundary present on available mapping	
OTHER ANOMALIES		
	Linear anomaly - probably related to pipe, cable or other modern service	
	Linear anomaly - possibly related to land drain	
	Magnetic disturbance associated with nearby metal object such as service or field boundary	
	Strong magnetic debris - possible disturbed or made ground	
	Weak disturbance from over head cables	
	Area of amorphous magnetic variation - probable natural (e.g. geological or pedological) origin	
	Magnetic spike - probable ferrous object	
Client		
CgMs CONSULTING LTD		
Project Title		Job No. J9498
LAND AT TWO BRIDGES ROAD, SIDFORD, DEVON		
Subject		
ABSTRACTION AND INTERPRETATION OF GRADIOMETER ANOMALIES - NORTH		
STRATASCAN™		
GEOPHYSICS FOR ARCHAEOLOGY AND ENGINEERING		
VINEYARD HOUSE		T: 01684 592266
UPTON UPON SEVERN		E: info@stratascan.co.uk
WR8 0SA		www.stratascan.co.uk
Scale		
1:1000		
Plot	Checked by	Issue No.
A3	DGE	01
Survey date	Drawn by	Figure No.
FEB 16	TR	10



Amendments		
Issue No.	Date	Description
-	-	-
-	-	-
© Stratascan Ltd - ----		
PROBABLE ARCHAEOLOGY		
	Positive anomaly / weak positive anomaly - probable cut feature of archaeological origin	
	Negative anomaly / weak negative anomaly - probable bank or earthwork of archaeological origin	
POSSIBLE ARCHAEOLOGY		
	Positive anomaly / weak positive anomaly - possible cut feature of archaeological origin	
	Negative anomaly / weak negative anomaly - possible bank or earthwork of archaeological origin	
MEDIEVAL/POST-MEDIEVAL AGRICULTURE		
	Widely spaced curving parallel linear anomalies - probably related to ridge-and-furrow	
	Closely spaced parallel linear anomalies - probably related to agricultural activity such as ploughing	
	Linear anomaly - probably related to a former field boundary not present on available mapping	
	Linear anomaly - related to a former field boundary present on available mapping	
OTHER ANOMALIES		
	Linear anomaly - probably related to pipe, cable or other modern service	
	Linear anomaly - possibly related to land drain	
	Magnetic disturbance associated with nearby metal object such as service or field boundary	
	Strong magnetic debris - possible disturbed or made ground	
	Weak disturbance from over head cables	
	Area of amorphous magnetic variation - probable natural (e.g. geological or pedological) origin	
	Magnetic spike - probable ferrous object	
Client		
CgMs CONSULTING LTD		
Project Title		Job No. J9498
LAND AT TWO BRIDGES ROAD, SIDFORD, DEVON		
Subject		
ABSTRACTION AND INTERPRETATION OF GRADIOMETER ANOMALIES - SOUTH		
STRATASCAN™		
GEOPHYSICS FOR ARCHAEOLOGY AND ENGINEERING		
VINEYARD HOUSE		T: 01684 592266
UPTON UPON SEVERN		E: info@stratascan.co.uk
WR8 0SA		www.stratascan.co.uk
Scale 1:1000		
Plot	Checked by	Issue No.
A3	DGE	01
Survey date	Drawn by	Figure No.
FEB 16	TR	11