

Reproduced from Ordnance Survey's 1:25 000 map of 1998 with the permission of the controller of Her Majesty's Stationery Office. Crown Copyright reserved. Licence No. AL 50125A
 Licence:
 Stratascan Ltd
 Vineyard House
 Upper Hook Road
 Upton Upon Severn
 WR8 0SA
 OS 100km square = SP



Amendments

Issue No.	Date	Description
-	-	-
-	-	-

© Stratascan Ltd - 2014



Site centred on NGR SP 319 923

KEY

Area unsurveyable due to closely planted trees and overgrown vegetation

OS REFERENCING INFORMATION

A	431873.83, 292285.05
B	431992.55, 292267.55
C	432060.66, 292318.16
D	432268.41, 292287.55
E	432402.20, 292374.12
F	432437.43, 292422.68
G	432401.99, 292444.13
H	432330.25, 292540.33

Job No. 7385 Survey Date SEP 14

Client
CgMs CONSULTING LTD

Project Title
GEOPHYSICAL SURVEY - LAND OFF PLOUGH HILL ROAD, NUNEATON

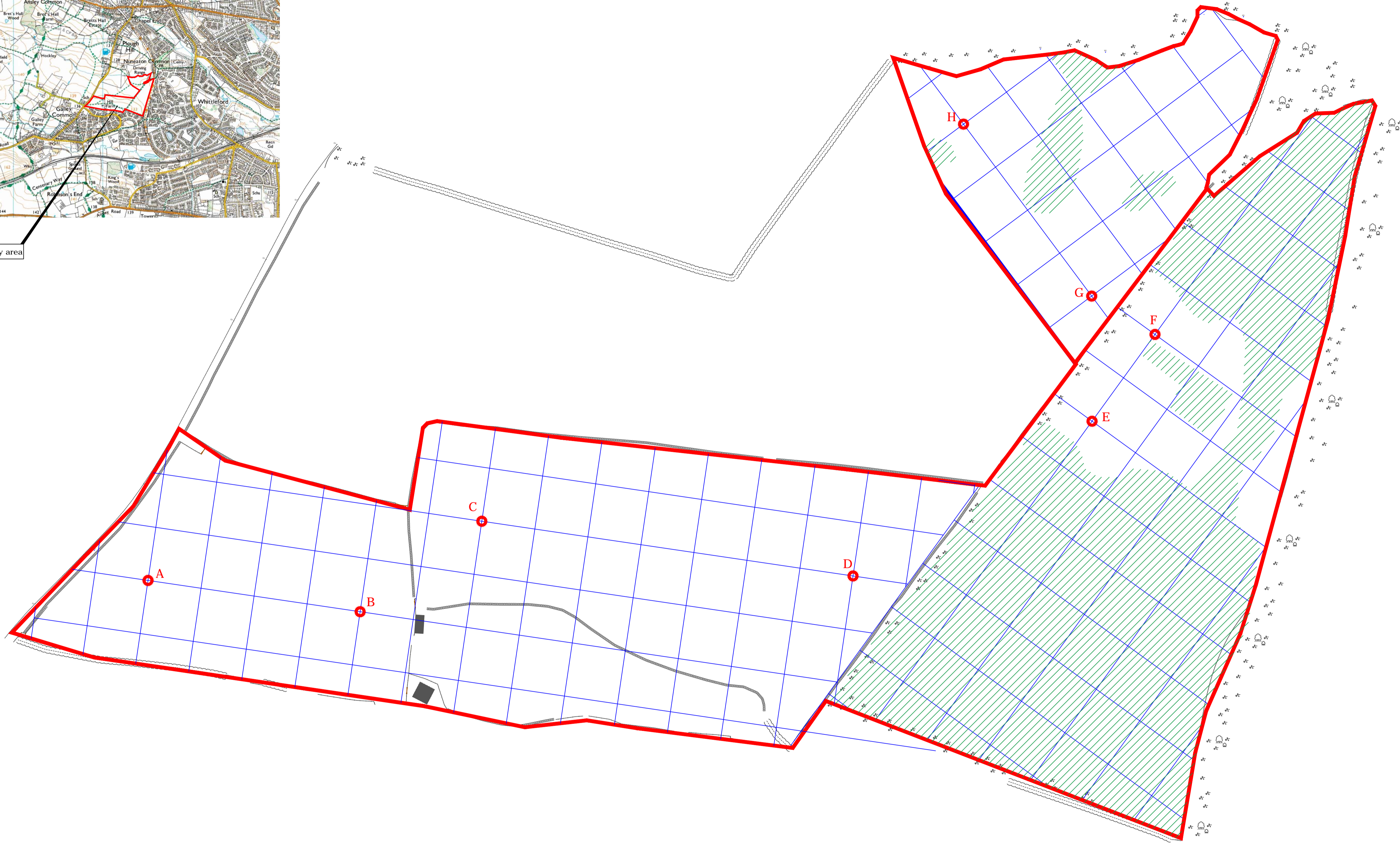
Subject
SITE LOCATION, SURVEY AREA & REFERENCING

STRATASCAN™
 GEOPHYSICS FOR ARCHAEOLOGY AND ENGINEERING
 VINEYARD HOUSE T: 01684 592266
 UPTON UPON SEVERN E: info@stratascan.co.uk
 WR8 0SA www.stratascan.co.uk

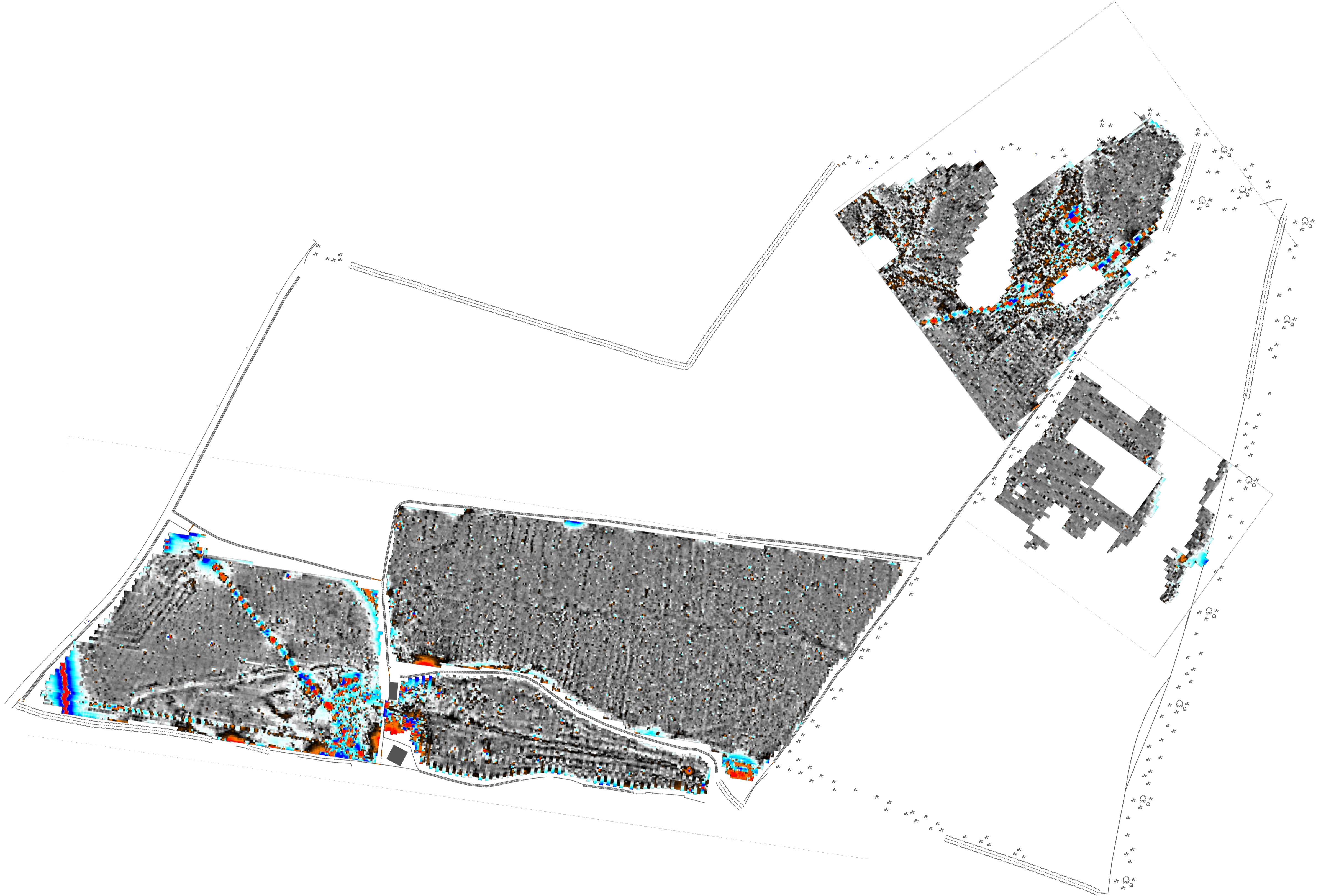


Scale 0m 10 20 30 40 50 60 70 80m
1:1250

Plot A1	Checked by DGE	Issue No. 01
Date OCT 14	Drawn by RD	Figure No. 01



Survey area



Amendments

Issue No.	Date	Description
-	-	-
-	-	-
-	-	-

© Stratascan Ltd - 2014

Plotting parameters

Maximum +100nT (red)
Minimum -100nT (blue)

+100nT
+25nT
+3nT
-3nT
-25nT
-100nT

Job No.	7385	Survey Date	SEP 14
---------	------	-------------	--------

Client
CgMs CONSULTING LTD

Project Title
GEOPHYSICAL SURVEY - LAND OFF PLOUGH HILL ROAD, NUNEATON

Subject
COLOUR PLOT OF MINIMALLY PROCESSED GRADIOMETER DATA SHOWING EXTREME VALUES

STRATASCAN™
GEOPHYSICS FOR ARCHAEOLOGY AND ENGINEERING

VINEYARD HOUSE T: 01684 592266
UPTON UPON SEVERN E: info@stratascan.co.uk
WR8 0SA www.stratascan.co.uk



Scale 0m 10 20 30 40 50 60 70 80m
1:1250

Plot	A1	Checked by	DGE	Issue No.	01
Date	OCT 14	Drawn by	RD	Figure No.	02



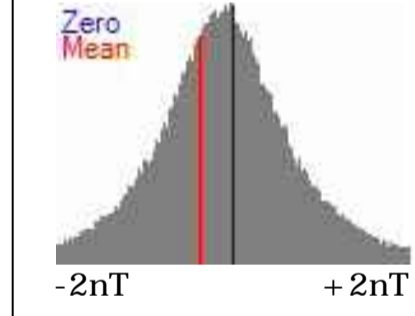
Amendments

Issue No.	Date	Description
-	-	-
-	-	-

© Stratascan Ltd - 2014

Plotting parameters

Maximum +2nT (black)
Minimum -2nT (white)



Job No.	7385	Survey Date	SEP 14
---------	------	-------------	--------

Client
CgMs CONSULTING LTD

Project Title
**GEOPHYSICAL SURVEY - LAND
OFF PLOUGH HILL ROAD,
NUNEATON**

Subject
**PLOT OF MINIMALLY
PROCESSED GRADIOMETER
DATA**

STRATASCAN™
GEOPHYSICS FOR ARCHAEOLOGY
AND ENGINEERING

VINEYARD HOUSE T: 01684 592266
UPTON UPON SEVERN E: info@stratascan.co.uk
WR8 0SA www.stratascan.co.uk



Scale 0m 10 20 30 40 50 60 70 80m
1:1250

Plot	A1	Checked by	DGE	Issue No.	01
Date	OCT 14	Drawn by	RD	Figure No.	03



Amendments

Issue No.	Date	Description
-	-	-
-	-	-

© Stratascan Ltd - 2014

KEY

PROBABLE ARCHAEOLOGY

- Positive anomaly / weak positive anomaly - probable cut feature of archaeological origin
- Negative anomaly / weak negative anomaly - probable bank or earthwork of archaeological origin
- Linear anomaly related to former footpath visible on mapping from 1887 to 1960
- Widely spaced curving parallel linear anomalies - probably related to ridge-and-furrow
- Magnetic disturbance related to former track-way visible on mapping from 1887 to 1960

POSSIBLE ARCHAEOLOGY

- Positive anomaly / weak positive anomaly - possible cut feature of archaeological origin
- Negative anomaly / weak negative anomaly - possible bank or earthwork of archaeological origin

OTHER ANOMALIES

- Area of disturbed ground related to areas of former woodland present on available mapping
- Closely spaced parallel linear anomalies - probably related to agricultural activity such as ploughing
- Linear anomaly - probably related to pipe, cable or other modern service
- Linear anomaly related to farm trackway visible on aerial photography
- Linear anomaly - possibly related to land drain
- Magnetic disturbance associated with nearby metal object such as service or field boundary
- Strong magnetic debris - possible disturbed or made ground
- Scattered magnetic debris
- Area of amorphous magnetic variation - probable natural (e.g. geological or pedological) origin
- Magnetic spike - probable ferrous object

Job No.	7385	Survey Date	SEP 14
---------	------	-------------	--------

Client
CgMs CONSULTING LTD

Project Title
GEOPHYSICAL SURVEY - LAND OFF PLOUGH HILL ROAD, NUNEATON

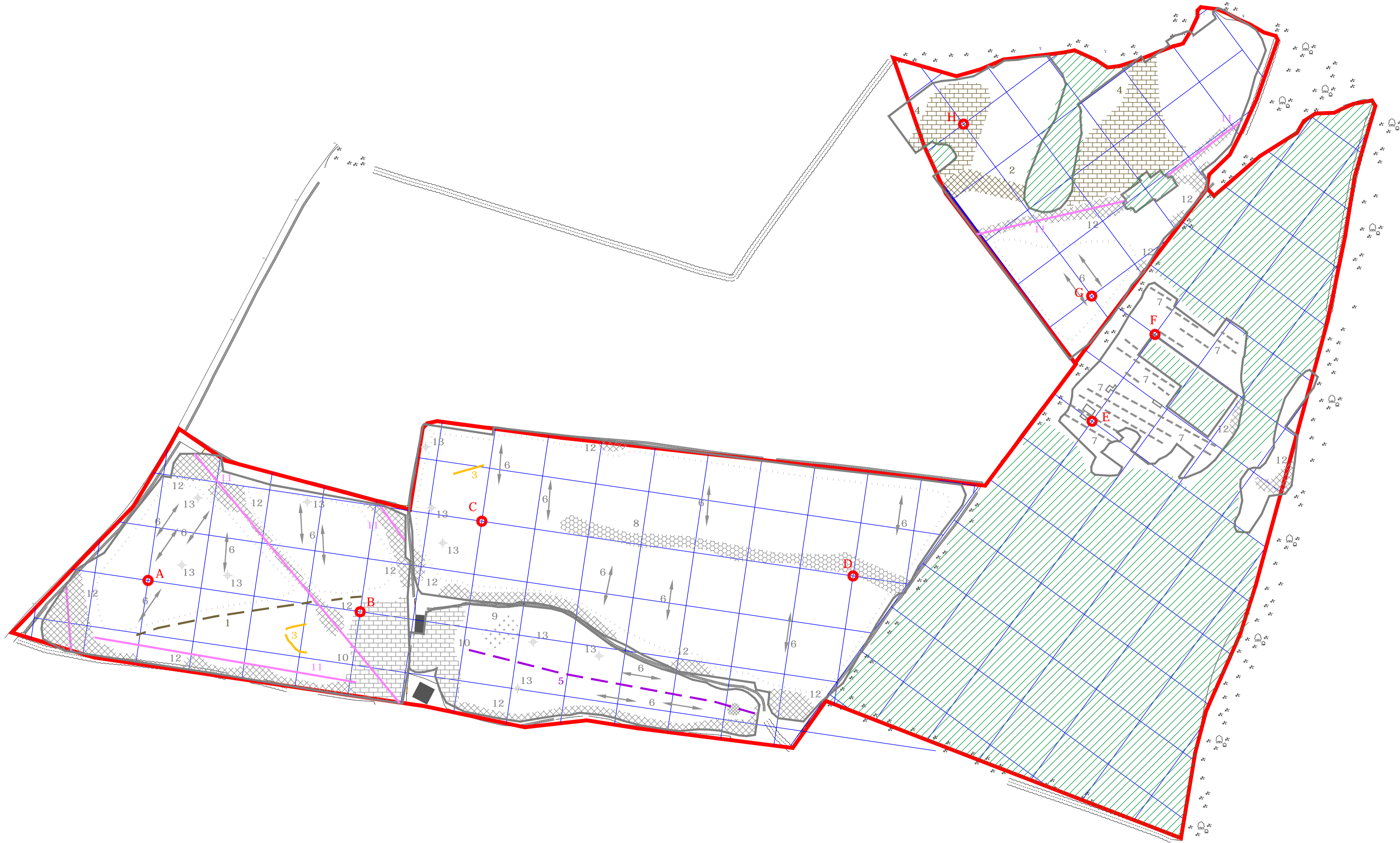
Subject
INTERPRETATION

STRATASCAN™
GEOPHYSICS FOR ARCHAEOLOGY AND ENGINEERING
VINEYARD HOUSE UPTON UPON SEVERN WR8 0SA T: 01684 592266 E: info@stratascan.co.uk www.stratascan.co.uk



Scale 0m 10 20 30 40 50 60 70 80m
1:1250

Plot	A1	Checked by	DGE	Issue No.	01
Date	OCT 14	Drawn by	RD	Figure No.	04



Amendments

Issue No.	Date	Description
-	-	-
-	-	-

© Stratascan Ltd - 2014

Area unsurveyable due to closely planted trees and overgrown vegetation

OS REFERENCING INFORMATION

A	431873.83, 292285.05
B	431992.55, 292267.55
C	432060.66, 292318.16
D	432268.41, 292287.55
E	432402.20, 292374.12
F	432437.43, 292422.68
G	432401.99, 292444.13
H	432330.25, 292540.33

KEY

PROBABLE ARCHAEOLOGY

- Positive anomaly / weak positive anomaly - probable cut feature of archaeological origin
- Negative anomaly / weak negative anomaly - probable bank or earthwork of archaeological origin
- Linear anomaly related to former footpath visible on mapping from 1887 to 1960
- Widely spaced curving parallel linear anomalies - probably related to ridge-and-furrow
- Magnetic disturbance related to former track-way visible on mapping from 1887 to 1960

POSSIBLE ARCHAEOLOGY

- Positive anomaly / weak positive anomaly - possible cut feature of archaeological origin
- Negative anomaly / weak negative anomaly - possible bank or earthwork of archaeological origin

OTHER ANOMALIES

- Area of disturbed ground related to areas of former woodland present on available mapping
- Closely spaced parallel linear anomalies - probably related to agricultural activity such as ploughing
- Linear anomaly - probably related to pipe, cable or other modern service
- Linear anomaly related to farm trackway visible on aerial photography
- Linear anomaly - possibly related to land drain
- Magnetic disturbance associated with nearby metal object such as service or field boundary
- Strong magnetic debris - possibly disturbed or made ground
- Scattered magnetic debris
- Area of amorphous magnetic variation - probable natural (e.g. geological or pedological) origin
- Magnetic spike - probable ferrous object

Job No.	7385	Survey Date	SEP 14
---------	------	-------------	--------

Client
CgMs CONSULTING LTD

Project Title
GEOPHYSICAL SURVEY - LAND OFF PLOUGH HILL ROAD, NUNEATON

Subject
INTERPRETATION WITH REFERENCING

STRATASCAN™
 GEOPHYSICS FOR ARCHAEOLOGY AND ENGINEERING
 VINEYARD HOUSE T: 01684 592266
 UPTON UPON SEVERN E: info@stratascan.co.uk
 WR8 0SA www.stratascan.co.uk



Scale 0m 10 20 30 40 50 60 70 80m
1:1250

Plot	A1	Checked by	DGE	Issue No.	01
Date	OCT 14	Drawn by	RD	Figure No.	05