

Reproduced from Ordnance Survey's 1:25 000 map of 1998 with the permission of the controller of Her Majesty's Stationary Office. Crown Copyright reserved. Licence No. AL 50125K
 Licence: Stratascan Ltd, Vineyard House, Upper Hook Road, Upton Upon Severn, WR8 0SA
 OS 100km square = TL

Survey Area

VIEWPORT 1

VIEWPORT 2

VIEWPORT 4

VIEWPORT 3

Previous geophysical survey area	
OS GRID REFERENCES	
A	549355.44, 258249.82
B	549153.03, 257814.58
C	549103.67, 258135.31
D	549053.7, 258026.49
E	548934.38, 257787.48
F	548865.28, 257689.38
G	548507.78, 257849.97
H	548670.99, 257774.07
I	548576.27, 257719.41
J	548761.67, 257620.78

STRATASCAN
 GEOPHYSICS FOR ARCHAEOLOGY
 AND ENGINEERING

sumo
 SERVICES

Stratascan Ltd
 VINEYARD HOUSE
 UPPER HOOK ROAD
 UPTON UPON SEVERN
 WORCESTERSHIRE
 WR8 0SA
 TEL: 01854 59 22 66
 FAX: 01854 408 0653
 www.stratascanSUMO.com

Title: SITE LOCATION, SURVEY AREA & REFERENCING
 Client: UNIVERSITY OF CAMBRIDGE
 ARCHAEOLOGICAL UNIT
 Project: J10260 - LAND NORTH OF TEVERSHAM
 DRIFT, CHERRY HINTON, CAMBRIDGE
 Scale: 1:2500 @ A1
 0m 50 100 150m Fig No: 01



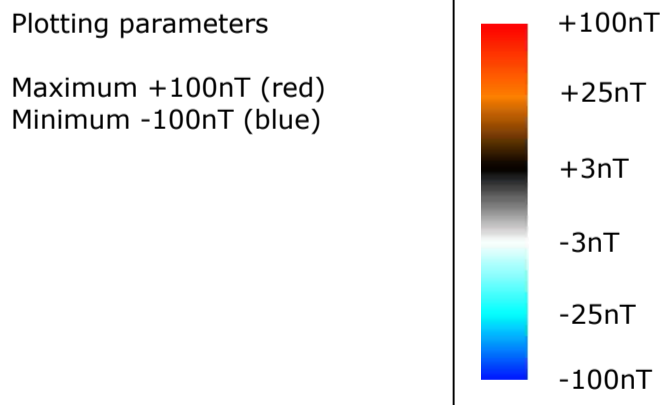
21

VIEWPORT 1

VIEWPORT 2

VIEWPORT 4

VIEWPORT 3



STRATASCAN
 GEOPHYSICS FOR ARCHAEOLOGY
 AND ENGINEERING

sumo
 SERVICES

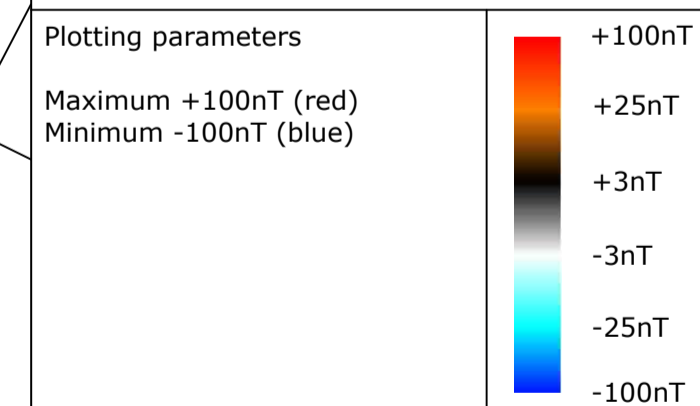
Stratascan Ltd
 VINEYARD HOUSE
 UPPER HOOK ROAD
 UPTON UPON SEVERN
 WORCESTERSHIRE
 WR8 0SA
 TEL: 01684 59 22 66
 FAX: 01684 408 0553
 www.stratascanSUMO.com

Title:
 COLOUR PLOT OF GRADIOMETER DATA
 SHOWING EXTREME VALUES - OVERVIEW

Client:
 UNIVERSITY OF CAMBRIDGE
 ARCHAEOLOGICAL UNIT

Project:
 J10260 - LAND NORTH OF TEVERSHAM
 DRIFT, CHERRY HINTON, CAMBRIDGE

Scale: 1:2500 @ A1
 0m 50 100 150m Fig No:
 02



STRATASCAN
 GEOPHYSICS FOR ARCHAEOLOGY
 AND ENGINEERING

sumo
 SURVEY SERVICES

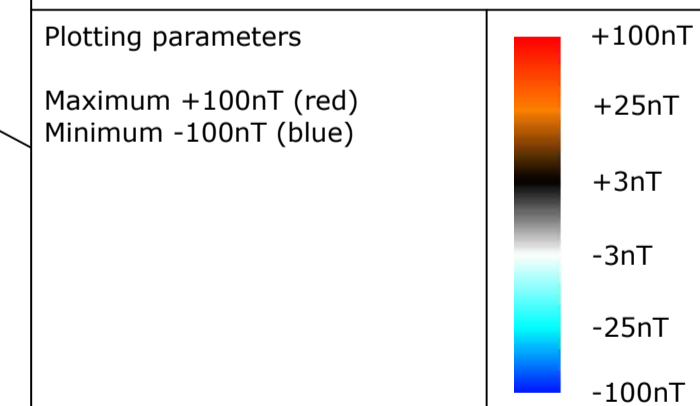
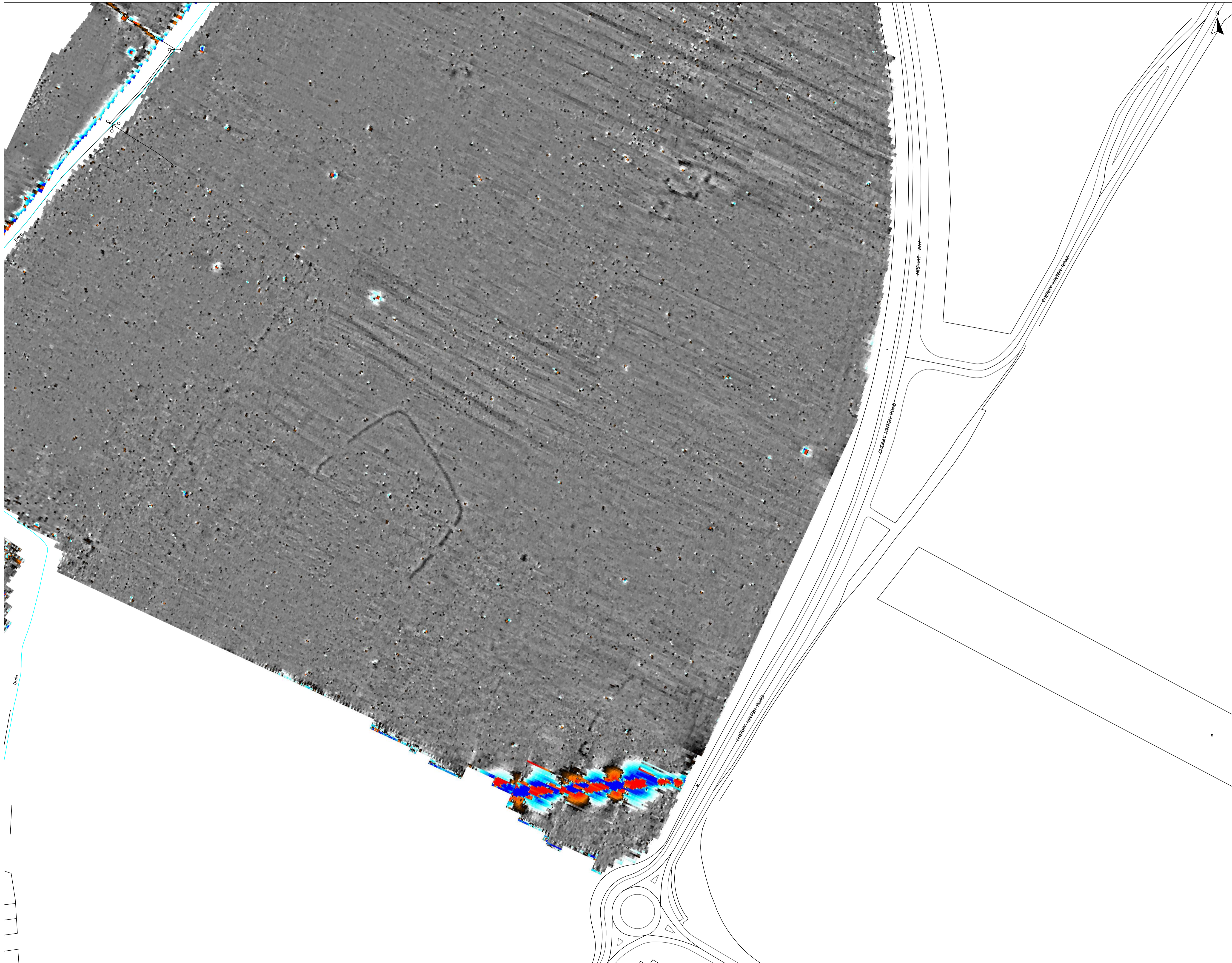
Stratascan Ltd
 VINEYARD HOUSE
 UPPER HOOK ROAD
 UPTON UPON SEVERN
 WORCESTERSHIRE
 WR8 0SA
 TEL: 01684 59 22 66
 FAX: 01684 408 0553
 www.stratascanSUMO.com

Title: COLOUR PLOT OF GRADIOMETER DATA
 SHOWING EXTREME VALUES - VIEWPORT 1

Client: UNIVERSITY OF CAMBRIDGE
 ARCHAEOLOGICAL UNIT

Project: J10260 - LAND NORTH OF TEVERSHAM
 DRIFT, CHERRY HINTON, CAMBRIDGE

Scale: 1:1000 @ A1
 0m 10 20 30 40 50 60m Fig No: 03



STRATASCAN
 GEOPHYSICS FOR ARCHAEOLOGY
 AND ENGINEERING

sumo
 SURVEY SERVICES

Stratascan Ltd
 VINEYARD HOUSE
 UPPER HOOK ROAD
 UPTON UPON SEVERN
 WORCESTERSHIRE
 WR8 0SA
 TEL: 01684 59 22 66
 FAX: 0145 408 0553
 www.stratascanSUMO.com

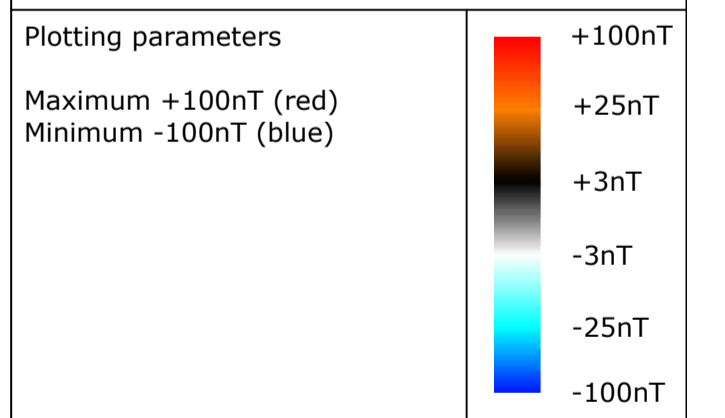
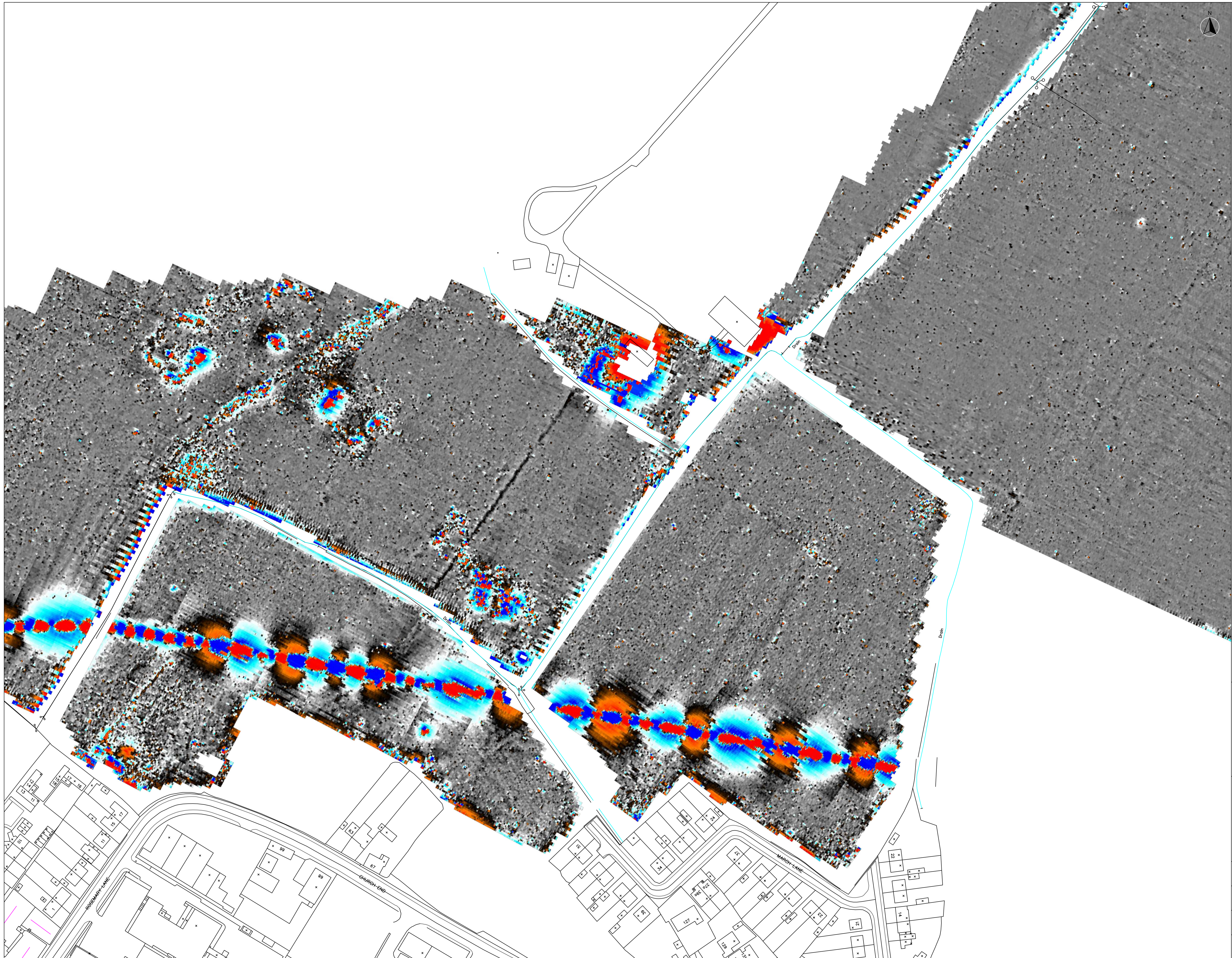
Title:
 COLOUR PLOT OF GRADIOMETER DATA
 SHOWING EXTREME VALUES - VIEWPORT 2

Client:
 UNIVERSITY OF CAMBRIDGE
 ARCHAEOLOGICAL UNIT

Project:
 J10260 - LAND NORTH OF TEVERSHAM
 DRIFT, CHERRY HINTON, CAMBRIDGE

Scale: 1:1000 @ A1
 0m 10 20 30 40 50 60m

Fig No:
 04



STRATASCAN
GEOPHYSICS FOR ARCHAEOLOGY
AND ENGINEERING

sumo
SURVEY SERVICES

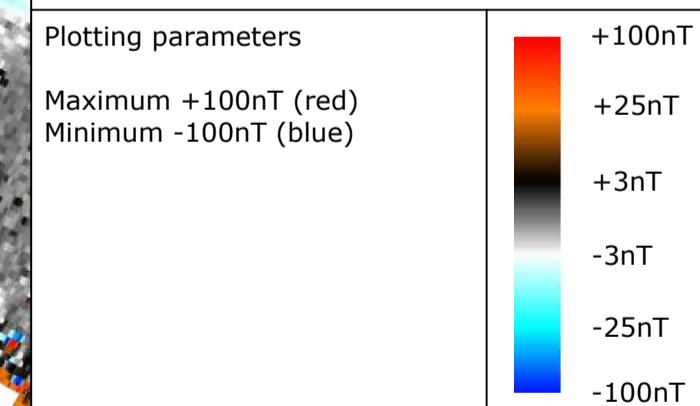
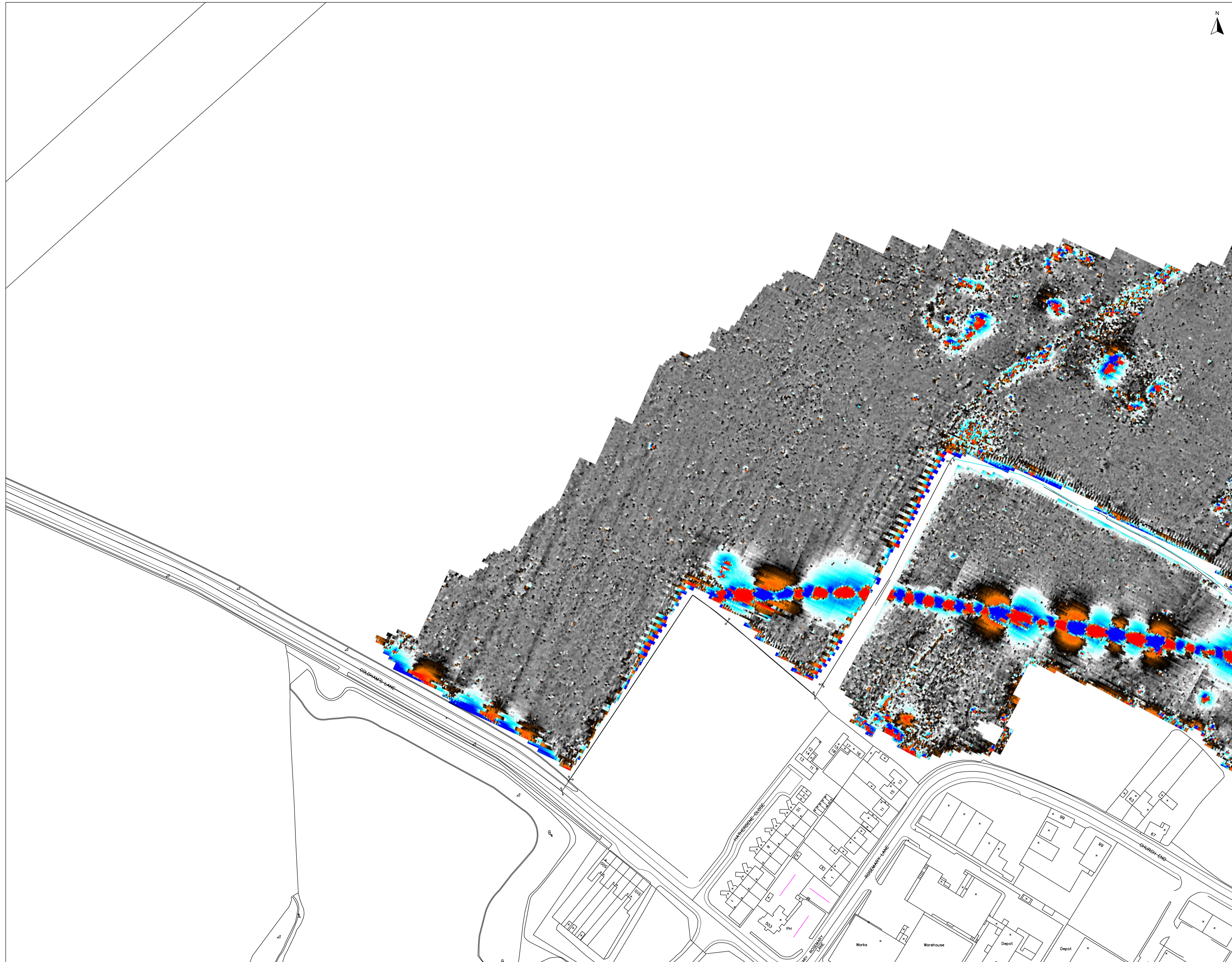
Stratascan Ltd
VINEYARD HOUSE
UPPER HOOK ROAD
LIPTON UPON SEVERN
WORCESTERSHIRE
WR8 0SA
TEL: 01684 59 22 66
FAX: 01684 408 0553
www.stratascanSUMO.com

Title: COLOUR PLOT OF GRADIOMETER DATA
SHOWING EXTREME VALUES - VIEWPORT 3

Client: UNIVERSITY OF CAMBRIDGE
ARCHAEOLOGICAL UNIT

Project: J10260 - LAND NORTH OF TEVERSHAM
DRIFT, CHERRY HINTON, CAMBRIDGE

Scale: 1:1000 @ A1
0m 10 20 30 40 50 60m Fig No: 05



STRATASCAN
GEOPHYSICS FOR ARCHAEOLOGY
AND ENGINEERING

sumo
Services

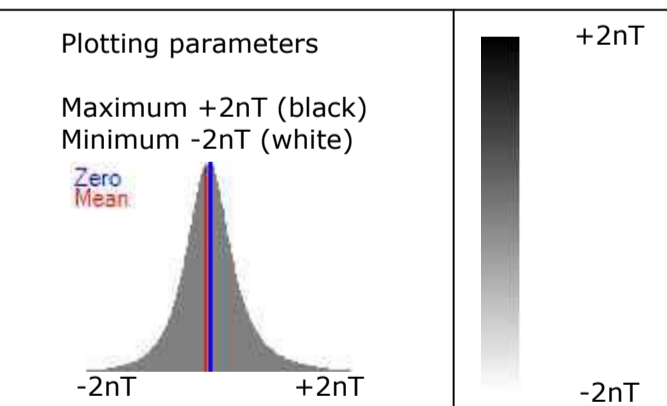
Stratascan Ltd
VINEYARD HOLE
UPPER HOOK ROAD
LIFTON UPON SEVERN
WORCESTERSHIRE
WIRB OSA
TEL: 01684 59 22 66
FAX: 01684 408 0553
www.stratascanSUMO.com

Title: COLOUR PLOT OF GRADIOMETER DATA
SHOWING EXTREME VALUES - VIEWPORT 4

Client: UNIVERSITY OF CAMBRIDGE
ARCHAEOLOGICAL UNIT

Project: J10260 - LAND NORTH OF TEVERSHAM
DRIFT, CHERRY HINTON, CAMBRIDGE

Scale: 1:1000 @ A1
0m 10 20 30 40 50 60m
Fig No: 06



STRATASCAN
GEOPHYSICS FOR ARCHAEOLOGY
AND ENGINEERING

sumo
SERVICES

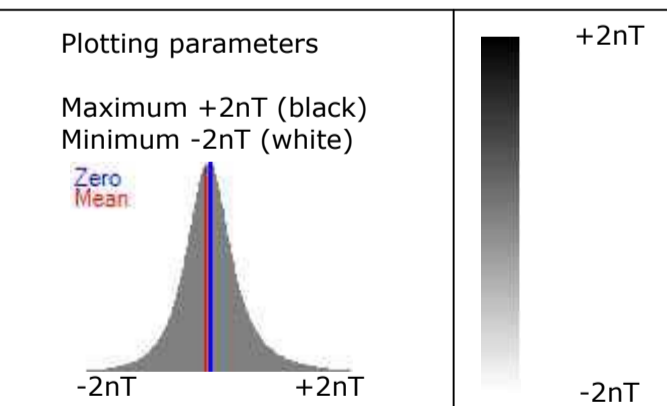
Stratascan Ltd
VINEYARD HOUSE
UPPER HOOK ROAD
LIFTON UPON SEVERN
WORCESTERSHIRE
WR8 0SA
TEL: 01684 59 22 66
FAX: 01684 408 0553
www.stratascanSUMO.com

Title: PLOT OF MINIMALLY PROCESSED
GRADIOMETER DATA - OVERVIEW

Client: UNIVERSITY OF CAMBRIDGE
ARCHAEOLOGICAL UNIT

Project: J10260 - LAND NORTH OF TEVERSHAM
DRIFT, CHERRY HINTON, CAMBRIDGE

Scale: 1:2500 @ A1
0m 50 100 150m Fig No: 07



STRATASCAN
GEOPHYSICS FOR ARCHAEOLOGY
AND ENGINEERING

sumo
SURVEY SERVICES

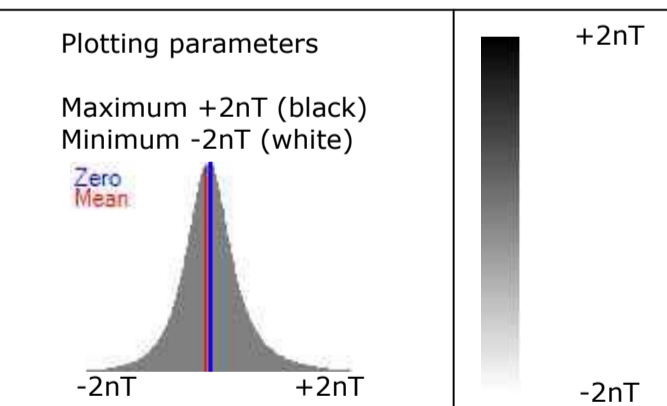
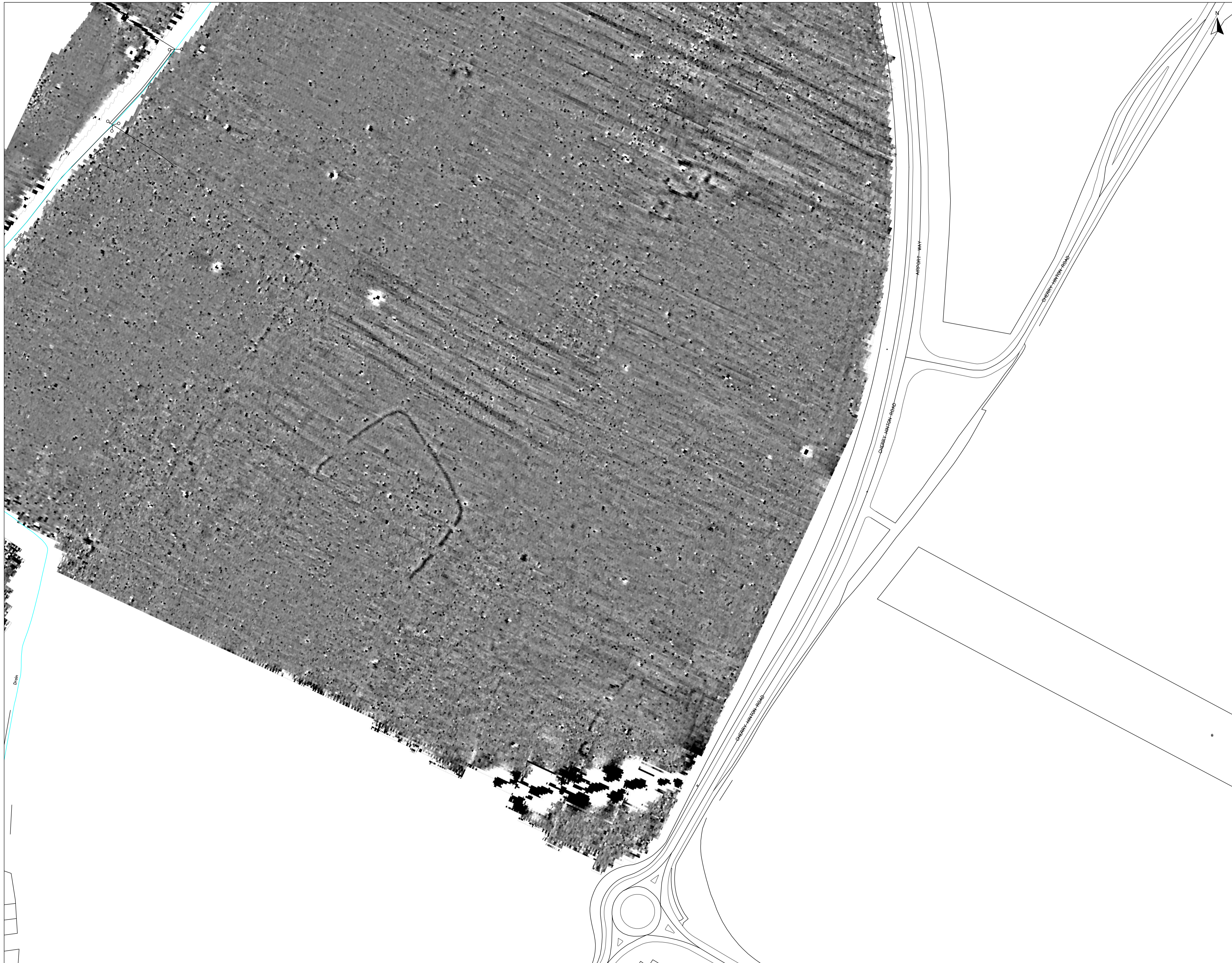
Stratascan Ltd
VINEYARD HOUSE
UPPER HOOK ROAD
LIPTON UPON SEVERN
WORCESTERSHIRE
WR8 0SA
TEL: 01684 59 22 66
FAX: 01684 408 0553
www.stratascanSUMO.com

Title: PLOT OF MINIMALLY PROCESSED
GRADIOMETER DATA - VIEWPORT 1

Client: UNIVERSITY OF CAMBRIDGE
ARCHAEOLOGICAL UNIT

Project: J10260 - LAND NORTH OF TEVERSHAM
DRIFT, CHERRY HINTON, CAMBRIDGE

Scale: 1:1000 @ A1
0m 10 20 30 40 50 60m
Fig No: 08



STRATASCANTM
GEOPHYSICS FOR ARCHAEOLOGY
AND ENGINEERING

sumo
Services

Stratascan Ltd
VINEYARD HOUSE
UPPER HOOK ROAD
LIPTON UPON SEVERN
WORCESTERSHIRE
WR8 0SA
TEL: 01684 59 22 66
FAX: 01684 408 0553
www.stratascanSUMO.com

Title: PLOT OF MINIMALLY PROCESSED
GRADIOMETER DATA - VIEWPORT 2

Client: UNIVERSITY OF CAMBRIDGE
ARCHAEOLOGICAL UNIT

Project: J10260 - LAND NORTH OF TEVERSHAM
DRIFT, CHERRY HINTON, CAMBRIDGE

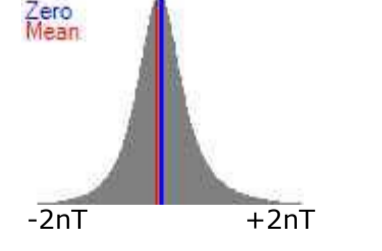
Scale: 1:1000 @ A1
0m 10 20 30 40 50 60m

Fig No: 09



Plotting parameters

Maximum +2nT (black)
Minimum -2nT (white)



STRATASCAN
GEOPHYSICS FOR ARCHAEOLOGY
AND ENGINEERING

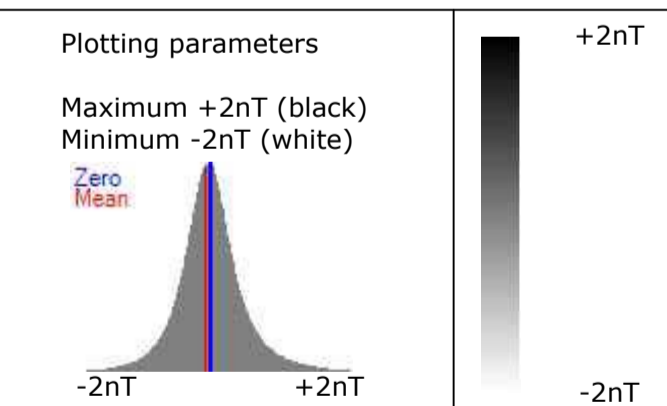
sumo
Stratascan Ltd
VINEYARD HOUSE
UPPER HOOK ROAD
LIPTON UPON SEVERN
WORCESTERSHIRE
WR8 0SA
TEL: 01684 59 22 66
FAX: 01684 408 0553
www.stratascanSUMO.com

Title: PLOT OF MINIMALLY PROCESSED
GRADIOMETER DATA - VIEWPORT 3

Client: UNIVERSITY OF CAMBRIDGE
ARCHAEOLOGICAL UNIT

Project: J10260 - LAND NORTH OF TEVERSHAM
DRIFT, CHERRY HINTON, CAMBRIDGE

Scale: 1:1000 @ A1
0m 10 20 30 40 50 60m Fig No: 10



STRATASCANTM
GEOPHYSICS FOR ARCHAEOLOGY
AND ENGINEERING

sumo
SURVEY SERVICES

Stratascan Ltd
VINEYARD HOUSE
UPPER HOOK ROAD
LIFTON UPON SEVERN
WORCESTERSHIRE
WR8 0SA
TEL: 01684 59 22 66
FAX: 01684 408 0553
www.stratascanSUMO.com

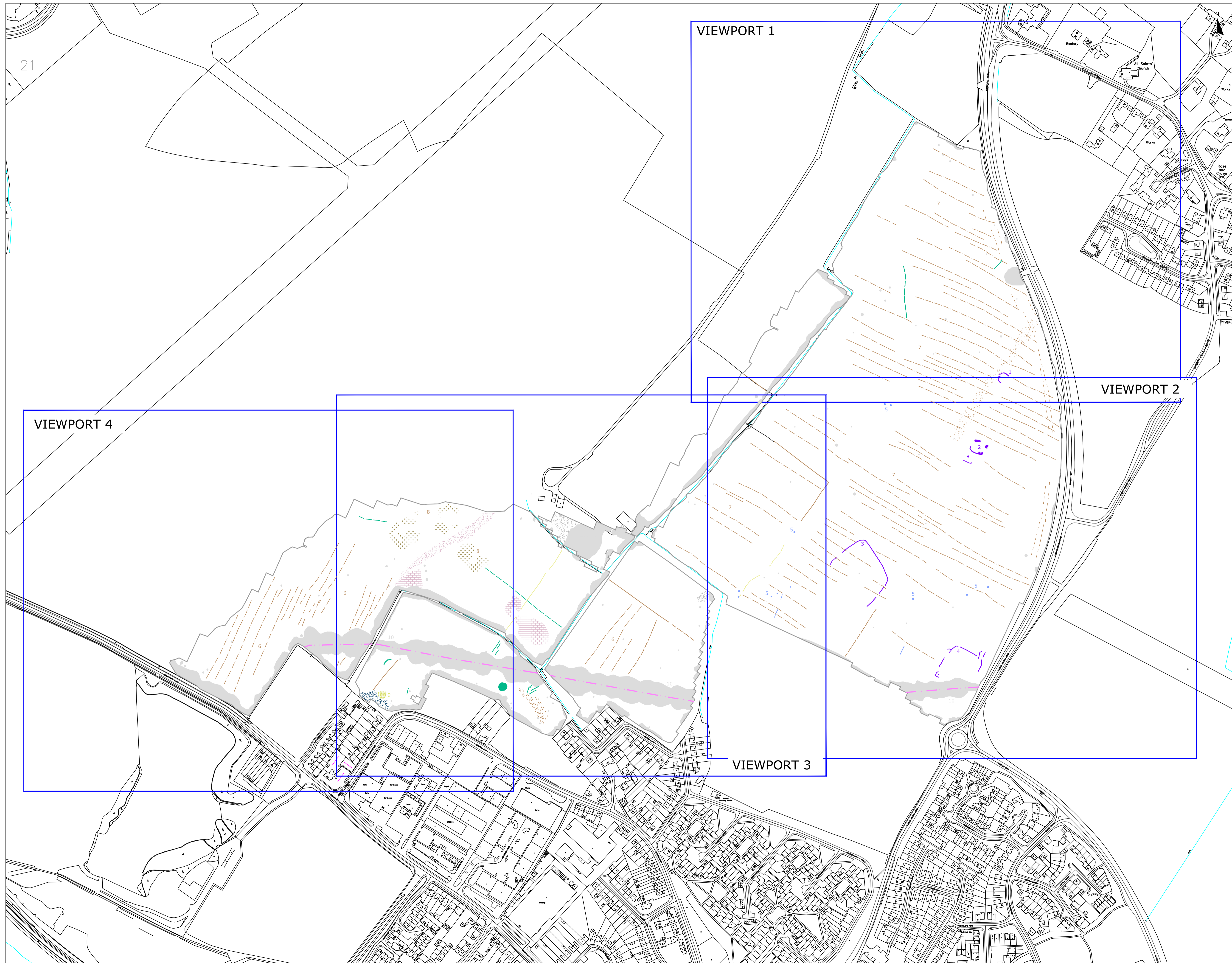
Title: PLOT OF MINIMALLY PROCESSED GRADIOMETER DATA - VIEWPORT 4

Client: UNIVERSITY OF CAMBRIDGE ARCHAEOLOGICAL UNIT

Project: J10260 - LAND NORTH OF TEVERSHAM DRIFT, CHERRY HINTON, CAMBRIDGE

Scale: 1:1000 @ A1
0m 10 20 30 40 50 60m

Fig No: 11



21

VIEWPORT 1

VIEWPORT 2

VIEWPORT 4

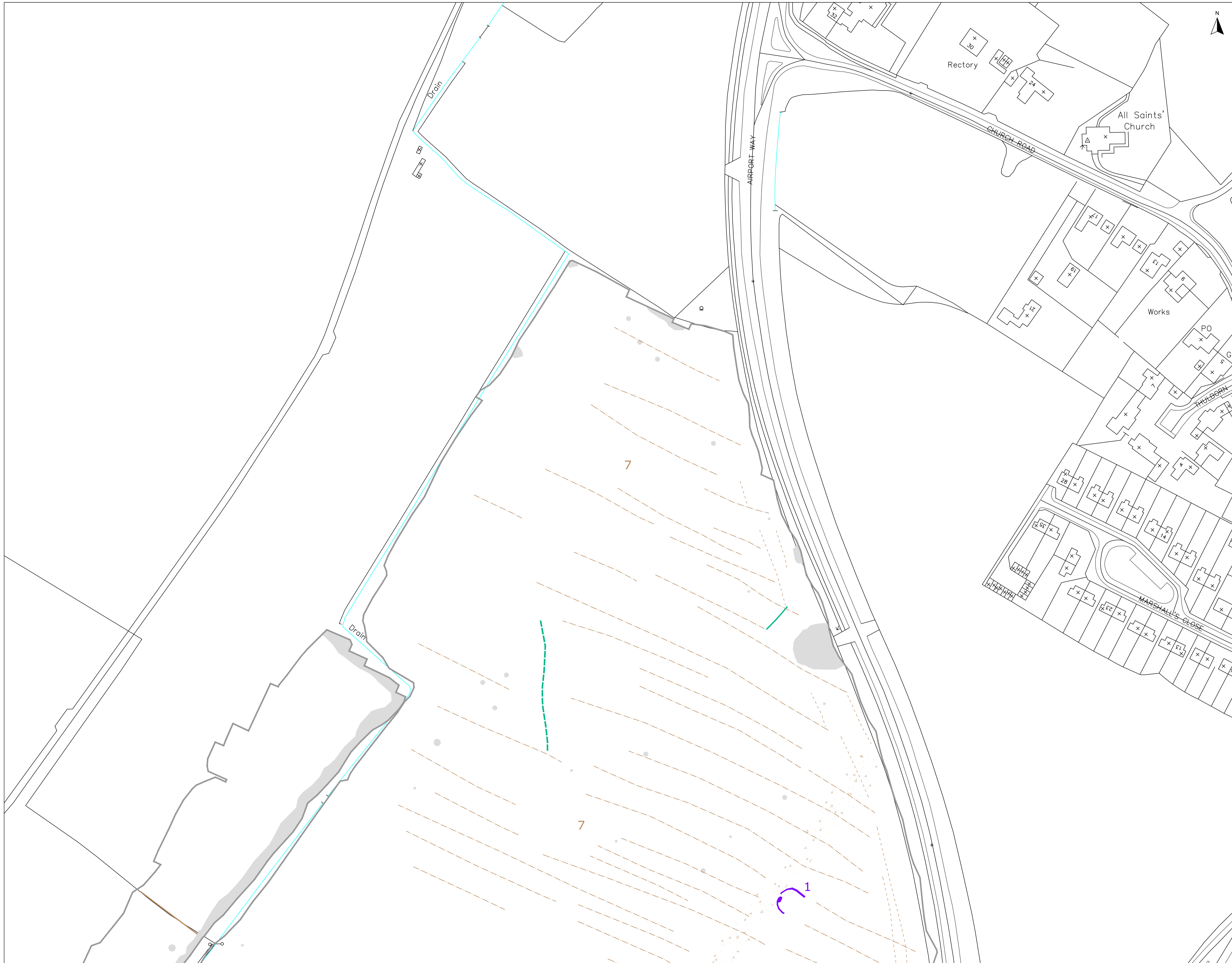
VIEWPORT 3

KEY	
	Probable archaeology (positive)
	Possible archaeology (positive/trend)
	Former field boundary (cornsborated) (positive/increased response/trend)
	Possible former field boundary (positive/trend)
	Ridge and furrow
	Agriculture (e.g. ploughing)
	Magnetic disturbance associated with airfield feature (track/made ground)
	Magnetic disturbance - likely WW2 feature, visible on 1945 aerial photo
	Magnetic disturbance - related to former well visible on available mapping
	Magnetic disturbance - related to former building visible on available mapping
	Service
	Magnetic debris
	Ferrous - associated with former pump visible on available mapping
	Ferrous
	Uncertain (positive)

STRATASCAN
 GEOPHYSICS FOR ARCHAEOLOGY
 AND ENGINEERING

Stratascan Ltd
 VINEYARD HOUSE
 UPPER HOOK ROAD
 LIPTON UPON SEVERN
 WORCESTERSHIRE
 WR8 0SA
 TEL: 01684 59 22 66
 FAX: 01684 408 0653
 www.stratascanSUMO.com

Title: ABSTRACTION AND INTERPRETATION OF GRADIOMETER ANOMALIES - OVERVIEW
 Client: UNIVERSITY OF CAMBRIDGE ARCHAEOLOGICAL UNIT
 Project: J10260 - LAND NORTH OF TEVERSHAM DRIFT, CHERRY HINTON, CAMBRIDGE
 Scale: 1:2500 @ A1
 0m 50 100 150m Fig No: 12



N

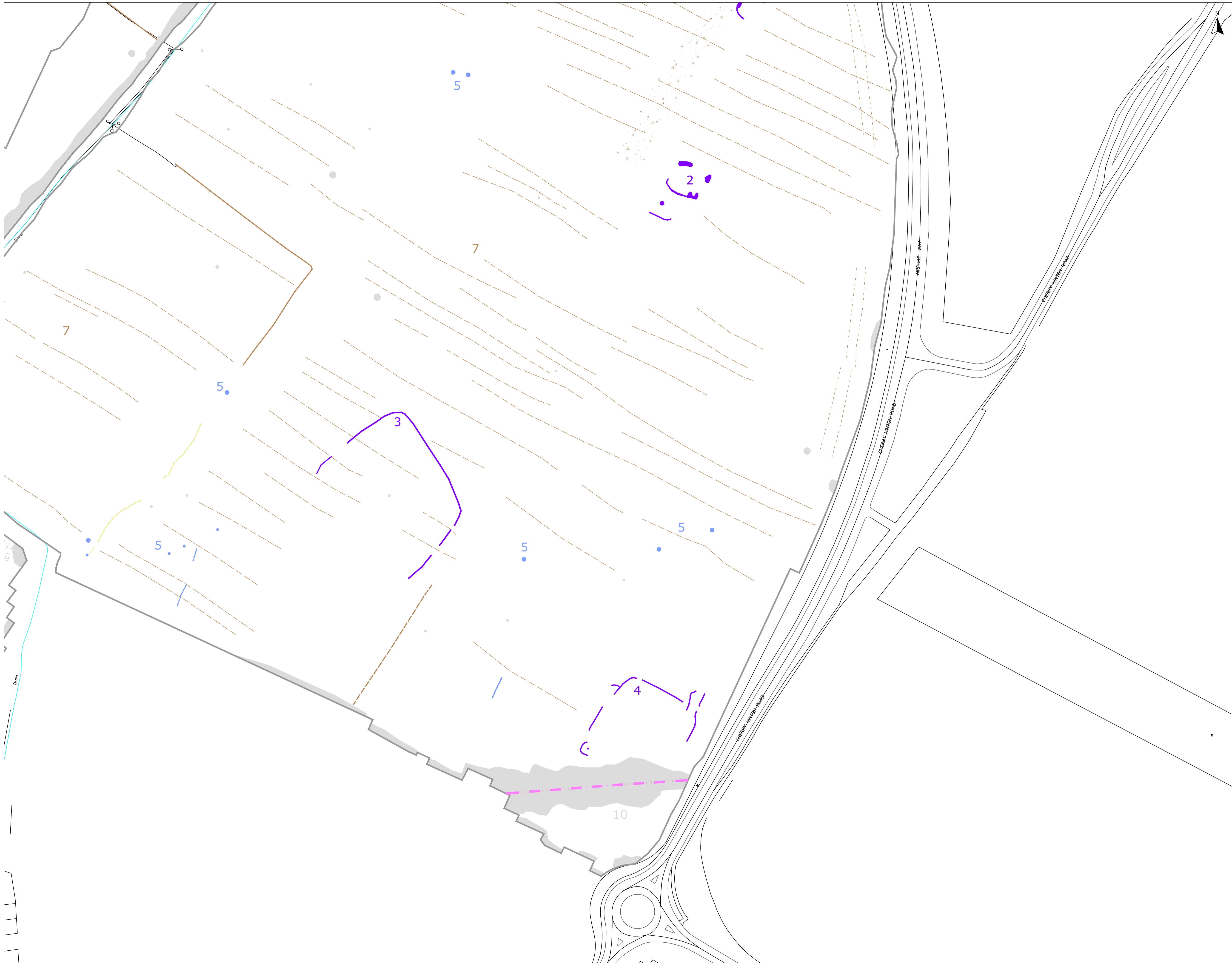
KEY	
	Probable archaeology (positive)
	Possible archaeology (positive/trend)
	Former field boundary (cornsborated) (positive/increased response/trend)
	Possible former field boundary (positive/trend)
	Ridge and furrow
	Agriculture (e.g. ploughing)
	Magnetic disturbance associated with airfield feature (track/made ground)
	Magnetic disturbance - likely WW2 feature, visible on 1945 aerial photo
	Magnetic disturbance - related to former well visible on available mapping
	Magnetic disturbance - related to former building visible on available mapping
	Service
	Magnetic debris
	Ferrous - associated with former pump visible on available mapping
	Ferrous
	Uncertain (positive)

STRATASCAN
 GEOPHYSICS FOR ARCHAEOLOGY
 AND ENGINEERING

Stratascan Ltd
 VINEYARD HOUSE
 UPPER HOOK ROAD
 UPTON UPON SEVERN
 WORCESTERSHIRE
 WR8 0SA
 TEL: 01684 59 22 66
 FAX: 0145 408 0553
 www.stratascanSUMO.com

sumo
 SURVEY SERVICES

Title: ABSTRACTION AND INTERPRETATION OF GRADIOMETER ANOMALIES - VIEWPORT 1
 Client: UNIVERSITY OF CAMBRIDGE ARCHAEOLOGICAL UNIT
 Project: J10260 - LAND NORTH OF TEVERSHAM DRIFT, CHERRY HINTON, CAMBRIDGE
 Scale: 1:1000 @ A1
 0m 10 20 30 40 50 60m Fig No: 13



KEY

	Probable archaeology (positive)
	Possible archaeology (positive/trend)
	Former field boundary (corroborated) (positive/increased response/trend)
	Possible former field boundary (positive/trend)
	Ridge and furrow
	Agriculture (e.g. ploughing)
	Magnetic disturbance associated with airfield feature (track/made ground)
	Magnetic disturbance - likely WW2 feature, visible on 1945 aerial photo
	Magnetic disturbance - related to former well visible on available mapping
	Magnetic disturbance - related to former building visible on available mapping
	Service
	Magnetic debris
	Ferrous - associated with former pump visible on available mapping
	Ferrous
	Uncertain (positive)

STRATASCAN
 GEOPHYSICS FOR ARCHAEOLOGY
 AND ENGINEERING

Stratascan Ltd
 VINEYARD HOUSE
 UPPER HOOK ROAD
 LIPTON UPON SEVERN
 WORCESTERSHIRE
 WR8 0SA
 TEL: 01684 59 22 66
 FAX: 01684 408 0553
 www.stratascanSUMO.com

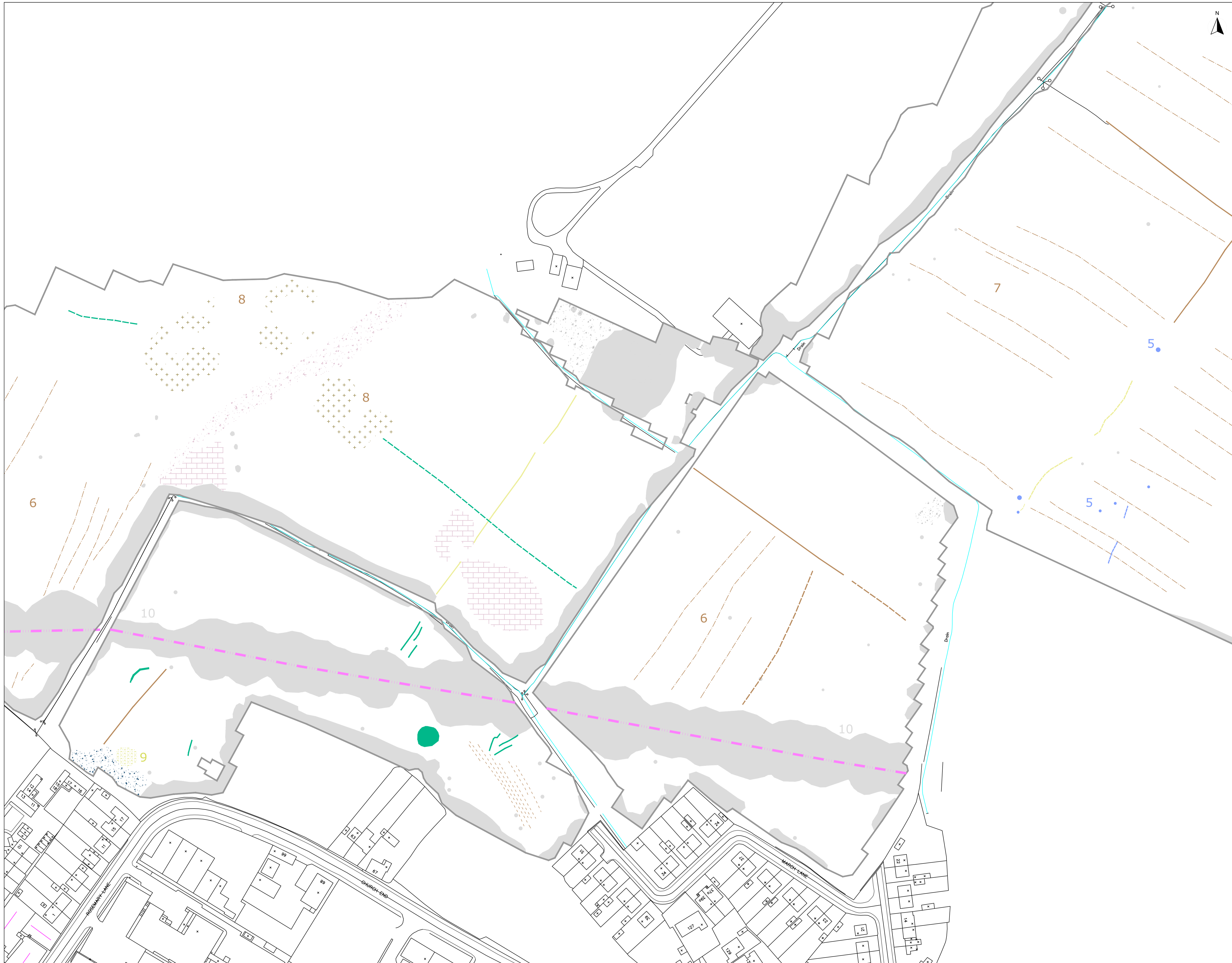
Title: ABSTRACTION AND INTERPRETATION OF GRADIOMETER ANOMALIES - VIEWPORT 2

Client: UNIVERSITY OF CAMBRIDGE ARCHAEOLOGICAL UNIT

Project: J10260 - LAND NORTH OF TEVERSHAM DRIFT, CHERRY HINTON, CAMBRIDGE

Scale: 1:1000 @ A1
 0m 10 20 30 40 50 60m

Fig No: 14



KEY	
	Probable archaeology (positive)
	Possible archaeology (positive/trend)
	Former field boundary (crossobated) (positive/increased response/trend)
	Possible former field boundary (positive/trend)
	Ridge and furrow
	Agriculture (e.g. ploughing)
	Magnetic disturbance associated with aerial feature (track/made ground)
	Magnetic disturbance - likely WW2 feature, visible on 1945 aerial photo
	Magnetic disturbance - related to former well visible on available mapping
	Magnetic disturbance - related to former building visible on available mapping
	Service
	Magnetic debris
	Ferrous - associated with former pump visible on available mapping
	Ferrous
	Uncertain (positive)

STRATASCAN
 GEOPHYSICS FOR ARCHAEOLOGY
 AND ENGINEERING

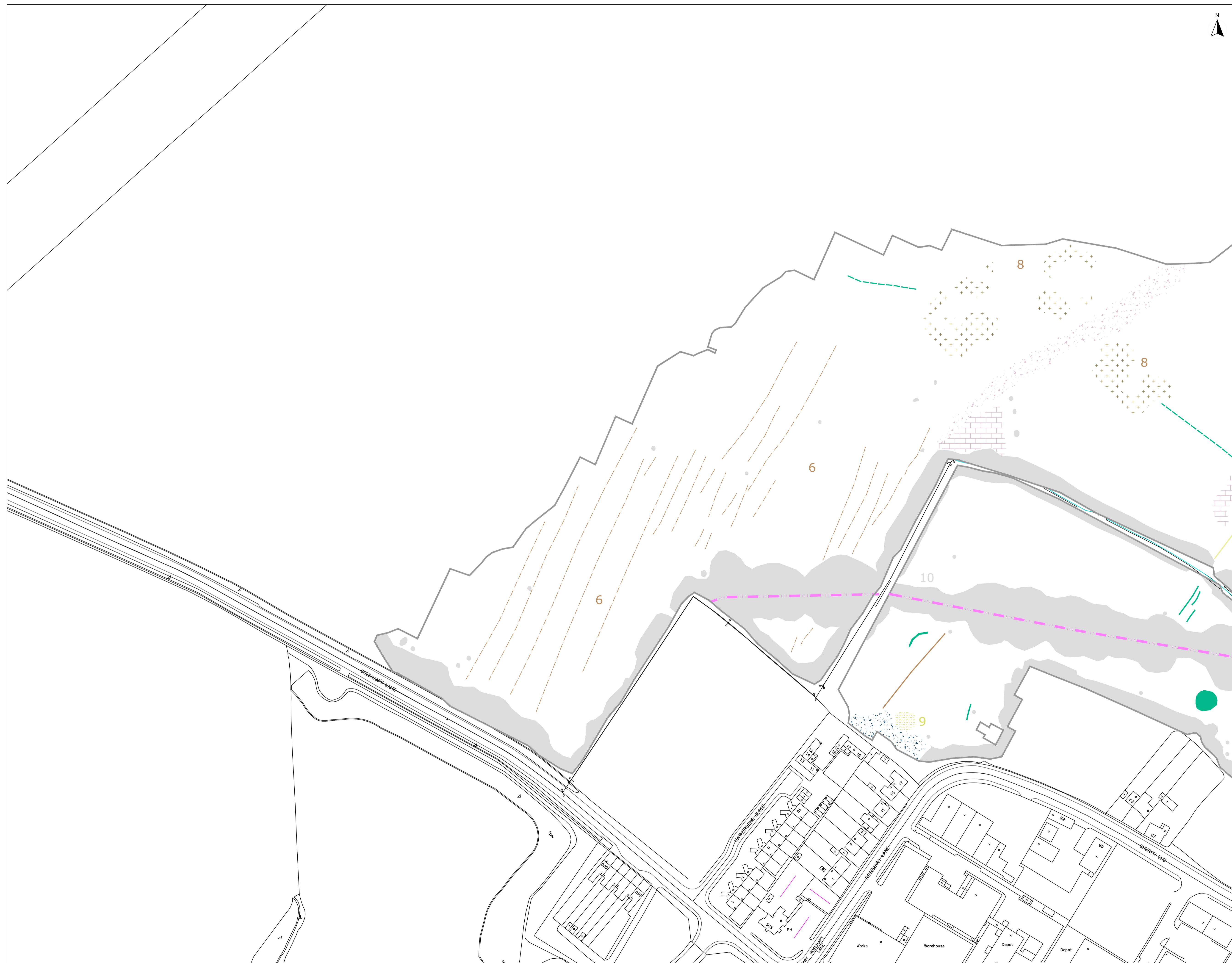
Stratascan Ltd
 VINEYARD HOUSE
 UPPER HOOK ROAD
 UPTON UPON SEVERN
 WORCESTERSHIRE
 WR8 0SA
 TEL: 01684 59 22 66
 FAX: 01684 408 0553
 www.stratascanSUMO.com

Title: ABSTRACTION AND INTERPRETATION OF GRADIOMETER ANOMALIES - VIEWPORT 3

Client: UNIVERSITY OF CAMBRIDGE ARCHAEOLOGICAL UNIT

Project: J10260 - LAND NORTH OF TEVERSHAM DRIFT, CHERRY HINTON, CAMBRIDGE

Scale: 1:1000 @ A1
 0m 10 20 30 40 50 60m Fig No: 15



KEY	
	Probable archaeology (positive)
	Possible archaeology (positive/trend)
	Former field boundary (cornubated) (positive/increased response/trend)
	Possible former field boundary (positive/trend)
	Ridge and furrow
	Agriculture (e.g. ploughing)
	Magnetic disturbance associated with aerial feature (track/made ground)
	Magnetic disturbance - likely WW2 feature, visible on 1945 aerial photo
	Magnetic disturbance - related to former well visible on available mapping
	Magnetic disturbance - related to former building visible on available mapping
	Service
	Magnetic debris
	Ferrous - associated with former pump visible on available mapping
	Ferrous
	Uncertain (positive)

STRATASCAN
 GEOPHYSICS FOR ARCHAEOLOGY
 AND ENGINEERING

sumo
 SURVEY SERVICES

Stratascan Ltd
 VINEYARD HOLE
 UPPER HOOK ROAD
 UPTON UPON SEVERN
 WORCESTERSHIRE
 WR8 0SA
 TEL: 01684 59 22 66
 FAX: 01684 408 0553
 www.stratascanSUMO.com

Title: ABSTRACTION AND INTERPRETATION OF GRADIOMETER ANOMALIES - VIEWPORT 4

Client: UNIVERSITY OF CAMBRIDGE ARCHAEOLOGICAL UNIT

Project: J10260 - LAND NORTH OF TEVERSHAM DRIFT, CHERRY HINTON, CAMBRIDGE

Scale: 1:1000 @ A1
 0m 10 20 30 40 50 60m Fig No: 16