

# St. Faith's School, Trumpington Road, Cambridge

An Archaeological Evaluation.



Shannon Hogan

CAMBRIDGE ARCHAEOLOGICAL UNIT  
UNIVERSITY OF CAMBRIDGE



**An Archaeological Evaluation at St. Faith's School,  
Trumpington Road, Cambridge**

Shannon Hogan

*Illustrations by Bryan Crossan*

**Cambridge Archaeological Unit  
Report No. 1079**

**March 2012**

## **CONTENTS**

Summary	1
Introduction	1
Geology and Topography	1
Archaeological Background	1
Methodology	2
Results	2
Acknowledgements	2

## **FIGURES**

Figure 1: Site Location and Trench Location

## *Summary*

*On the 15<sup>th</sup> February 2012, the Cambridge Archaeological Unit monitored the excavation of a single trench at St. Faith's School, Trumpington Road, Cambridge (centred at TL 4521 5650). No archaeological remains were present.*

## **1.0 INTRODUCTION**

The proposed development at St. Faith's School will entail the construction of a new building and associated services. The archaeological monitoring of an evaluation trench within the Proposed Development Area (PDA) was commissioned by St. Faith's School, in response to a brief outlined by the Cambridgeshire Historic Environment Team (CHET) (McConnell 2012) and a written scheme of investigation prepared by the Cambridge Archaeological Unit (CAU) (Beadsmoore 2012).

### **1.1 Geology and Topography**

St. Faith's School is located on the east side of Trumpington Road, Cambridge, (centred at TL 4521 5650), to the east of the River Cam. The site is situated at a height of approximately 11m AOD, and the underlying geology is river terrace gravels.

### **1.2 Archaeological Background**

#### *Prehistoric*

The PDA is located within a wider landscape of known prehistoric and Roman activity. Significant Bronze Age and Iron Age activity has been found to the east and west of St. Faith's School respectively (MCB16312; CHER04799, CHER01650a). Additional activity spanning the Neolithic through to the Saxon period has recently been excavated within Trumpington to the south (Patten forthcoming; Phillips forthcoming).

#### *Roman*

250m to the west of St. Faith's School, a substantial Roman settlement has been investigated at Latham Road (CHER01650, CHER04866, CHER05023, CHER05009, MCB15779, MCB17566), whilst Romano-British field systems have recently been investigated at Brooklands Avenue to the north (McConnell 2012). A Roman cemetery and a few Saxon inhumation burials were found at Dam Hill to the west of St. Faith's (CHER04956; CHER04955), whilst Medieval coin hoard was found off Latham Road (CHER01650b). Aerial photographs have shown numerous cropmarks of enclosures, trackways and field systems of probable prehistoric and Romano-British date around the PDA, to the west of Trumpington Road and the south of Latham Road (CHER09603).

## 2.0 METHODOLOGY

A single trench was excavated with a 1.5 ton ‘mini-digger’ fitted with a 1m wide toothless bucket, and monitored by an experienced archaeologist. The trench was located using a Global Positioning System (GPS) and a written record was made of all deposits revealed within the trench. The site was ascribed the site code SFS 12.

## 3.0 RESULTS

A single north-south aligned trench measuring 9.8m long and 2.2m wide was machine excavated within the PDA (Table 1). No archaeological remains were encountered. A single inactive modern plastic water pipe was identified at the southwest corner of the trench and was left in tact.

<b>Trench 1</b>		
<b>General Description</b> The topsoil was a compacted brown-grey sandy silt, heavily disturbed by modern building activity, and contained frequent small stones and small concrete lumps. The subsoil was a moderately soft mid-dark brown sandy-silt, heavily bioturbated. The natural was a soft, light orange-brown silty-sand with frequent poorly sorted medium-large gravels.	<b>Orientation</b>	NNE-SSW
	<b>Min. Depth (m)</b>	0.42
	<b>Max. Depth (m)</b>	0.45
	<b>Length (m)</b>	9.8
	<b>Width (m)</b>	2.2
	<b>Archaeology Y/N</b>	N

**Table 1: Description of Trench 1 at St. Faith’s School, Cambridge.**

## 4.0 ACKNOWLEDGEMENTS

The project was funded by St. Faith’s School and managed by Emma Beadsmoore of the CAU. The program of work was monitored by Dan McConnell of the Cambridgeshire Historic Environment Team. The trench was machine excavated by Lattenbury Services and the author was assisted on site by Matthew Woods.

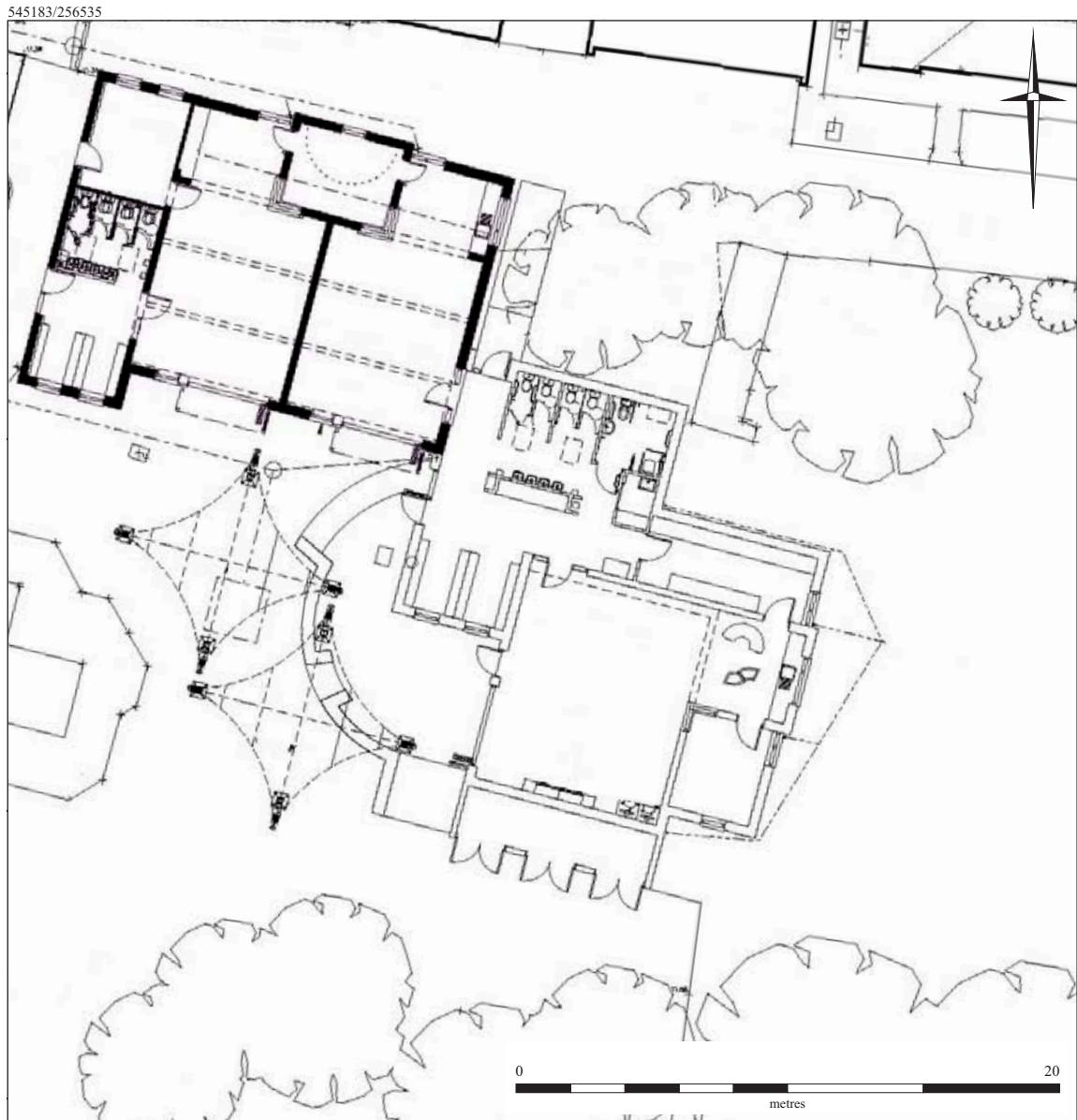
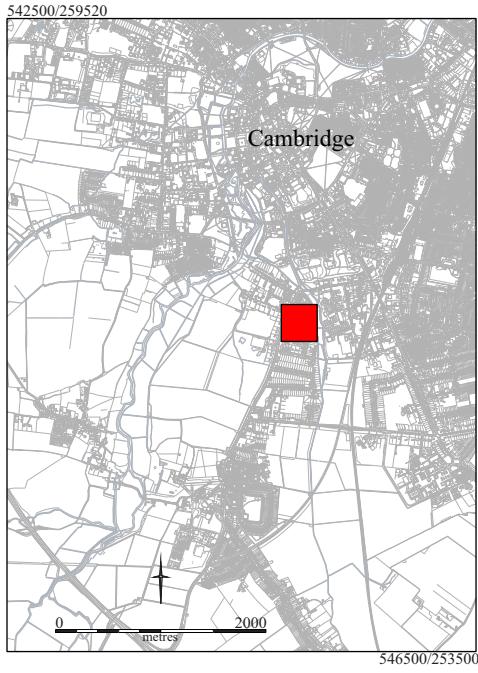


Figure 1. Location plan.

# OASIS DATA COLLECTION FORM: England

[List of Projects](#) | [Manage Projects](#) | [Search Projects](#) | [New project](#) | [Change your details](#) | [HER coverage](#) | [Change country](#) | [Log out](#)

## Printable version

**OASIS ID: cambridg3-120637**

### Project details

Project name	An Archaeological Evaluation at St Faith's School, Cambridge
Short description of the project	On the 15th February 2012, the Cambridge Archaeological Unit monitored the excavation of a single trench at St. Faith's School, Trumpington Road, Cambridge (centred at TL 4521 5650). No archaeological remains were present.
Project dates	Start: 15-02-2012 End: 15-02-2012
Previous/future work	No / No
Any associated project reference codes	SFS 12 - Sitecode
Type of project	Field evaluation
Site status	None
Current Land use	Other 14 - Recreational usage
Monument type	NONE None
Monument type	NONE None
Significant Finds	NONE None
Methods & techniques	'Targeted Trenches'
Development type	Public building (e.g. school, church, hospital, medical centre, law courts etc.)
Prompt	Planning condition
Position in the planning process	After full determination (eg. As a condition)

### Project location

Country	England
Site location	CAMBRIDGESHIRE CAMBRIDGE CAMBRIDGE St Faith's School, Trumpington Road, Cambridge

Postcode	CB2 8AG
Study area	21.50 Square metres
Site coordinates	TL 4521 5650 52.1871722190 0.124402132046 52 11 13 N 000 07 27 E Point
Height OD / Depth	Min: 11.00m Max: 11.00m

### Project creators

Name of Organisation	Cambridge Archaeological Unit
Project brief originator	Local Authority Archaeologist and/or Planning Authority/advisory body
Project design originator	Emma Beadsmoore
Project director/manager	Emma Beadsmoore
Project supervisor	Shannon Hogan
Type of sponsor/funding body	Developer
Name of sponsor/funding body	St Faith's School

### Project archives

Physical Archive recipient	Cambridge Archaeological Unit
Physical Contents	'other'
Digital Archive recipient	Cambridge Archaeological Unit
Digital Contents	'none'
Digital Media available	'Survey','Text'
Paper Archive recipient	Cambridge Archaeological Unit
Paper Contents	'Survey'
Paper Media available	'Context sheet','Drawing','Report','Survey '

### Project bibliography 1

Publication type	Grey literature (unpublished document/manuscript)
Title	An Archaeological Evaluation at St Faith's School, Trumpington Road, Cambridge
Author(s)/Editor(s)	Hogan, S.
Other bibliographic details	1079
Date	2012
Issuer or publisher	CAU
Place of issue or publication	Cambridge
Description	A4 wire bound report, with plastic laminate front. Two pages of text, one figure.
URL	<a href="http://ads.ahds.ac.uk">http://ads.ahds.ac.uk</a>



Entered by  
Entered on

Shannon Hogan (sh568@cam.ac.uk)  
9 March 2012

# OASIS:

Please e-mail [English Heritage](#) for OASIS help and advice

© ADS 1996-2006 Created by [Jo Gilham and Jen Mitcham, email](#) Last modified Friday 3 February 2006

Cite only: <http://www.oasis.ac.uk/form/print.cfm> for this page