

Haddock Rise, Sutton, Cambridgeshire

An Archaeological Evaluation Assessment



Matthew Collins

**CAMBRIDGE ARCHAEOLOGICAL UNIT
UNIVERSITY OF CAMBRIDGE**



Haddock Rise, Sutton, Cambridgeshire
An Archaeological Evaluation Assessment

Matthew Collins

Illustrations by Vicki Herring

Cambridge Archaeological Unit
University of Cambridge
Department of Archaeology

March 2012

Report No. 1081
Event No. ECB 3639

Contents

Non Technical Summary	3
Introduction	4
<i>Location, topography and geology</i>	4
<i>Archaeological Background</i>	4
<i>Methodology</i>	4
<i>Archive</i>	5
Results	5
Discussion	6
Acknowledgements	6
References	7

List of Figures

Figure 1 – Location Map

Figure 2 – Trench Plan and Feature F.100

Non-Technical Summary

Cambridge Archaeological Unit undertook an archaeological evaluation at Haddock Rise, Sutton, Cambridgeshire, prior to a small residential development. The trenching revealed a small post-medieval/modern quarry pit but no other archaeological features or deposits.

Introduction

An archaeological evaluation was carried out by Cambridge Archaeological Unit (CAU) on the 15th March 2012 on land at Haddock Rise, Sutton, Cambridgeshire, prior to a small residential development. Commissioned by A.K.T. Builders Ltd, the evaluation aimed to establish the presence, date, state of preservation and significance of any archaeological remains. The evaluation was carried out and this report was produced in accordance with an archaeological specification written by the CAU (Beadsmoore 2011) in response to a brief by the Cambridgeshire Historic Environment Team (CHET) at Cambridgeshire County Council. The specification and evaluation were approved and monitored by an Archaeological Officer from that team.

Location, Topography and Geology

The development area is located towards the western end of Sutton, Cambridgeshire on a ridge of Glacial Sand and Gravel (BGS 1980). It is surrounded by residential buildings and gardens and occupies approximately 0.095 ha of land at the north end of Haddock Rise. It centres on TL 4354/7856 and slopes significantly from 12.10m OD along the northern edge of the development area, to 9.79m OD at the southern edge.

Archaeological Background

Limited prehistoric activity is known from the immediate area and primarily consists of stray flint finds such as a single retouched Early Bronze Age blade recovered from The Row, MCB 16488. Stray Roman and Medieval finds (MCB16661 and CHER 05692) have also been recovered from within a 200m radius of the development area, whilst Roman remains have been identified on the southern slopes of the ridge (MCB 6992) including a pewter hoard (CHER 05884). An Iron Age and Roman rural settlement has also been identified 600m to the northeast, (MCB 17411).

Evidence for Saxo-Norman and medieval settlement has been identified along the nearby High Street, MCB 15736), whilst extensive post-medieval sand and gravel quarrying was identified at West Lodge Road, 200m to the east (Timberlake 2011), suggesting the possibility for similar activity within the development area.

Methodology

The development area was evaluated by 3 trenches totalling 23.1m (a 3.5% sample of the area) which were placed to target the footings of the proposed buildings.

Topsoil and underlying deposits were removed under the supervision of an experienced archaeologist with a tracked 3-ton 360° machine using a 1.2m wide toothless ditching bucket. A datasheet detailing the characteristics of each trench was generated and a digital photographic record taken. Soil removed whilst machining was scanned by eye for finds and with a metal detector, as was the single exposed feature. Excavation of the archaeological feature was carried out using hand tools and ambiguous natural features were also tested. The recording followed a CAU modified MoLAS system (Spence 1990) whereby feature numbers, F. are assigned to

stratigraphic events and numbers [fill] or [cut] to individual contexts. The evaluation trenches were planned at 1:50 and individual sections drawn at 1:10.

All work was carried out in strict accordance with statutory Health and Safety legislation and with the recommendations of FAME (Allen & Holt 2010) and in accordance with a site specific risk assessment and the CAU Health and Safety policy. The CAU assigned site code is HRS 11 and the event number is ECB 3639.

Archive

A total of two contexts from a single feature were excavated and recorded and no artefacts were recovered. The documentary records have been assembled into a catalogued archive in line with Appendix 6 of MAP2 (English Heritage 1992) and are being stored at the CAU offices.

Results

Scanning the removed overburden by eye and with a metal detector yielded no artefacts. Both topsoil and subsoil deposits appeared quite sterile with only very occasional small fragments of post-medieval/modern brick and tile in evidence.

A single small, shallow pit, **F.100**, was identified in Trench 1 together with a tree-throw. Neither of these features yielded any finds and the fill of the pit was very sterile and indicative of a small sand extraction pit.

Trench 1								
General Description						Orientation		NE-SW
Trench 1 contained a single, small post-medieval/modern quarry pit.						Avg. Topsoil Depth (m)		0.22
						Avg. Subsoil Depth (m)		0.62
						Width (m)		1.40
						Length (m)		8.30
Feature No.	Feature Type	Shape	Context No.	Cut/Fill	Width (m)	Depth (m)	Artefact	Archaeological Period
100	Quarry Pit	-	200	F	-	-	None	Post-medieval/modern
100	Quarry Pit	Irregular	201	C	1.45	0.20	-	

Trench 2			
General Description		Orientation	NW-SE
Trench 2 contained no archaeological features or deposits.		Avg. Topsoil Depth (m)	0.21
		Avg. Subsoil Depth (m)	0.47
		Width (m)	1.40
		Length (m)	6.80

Trench 3			
General Description		Orientation	NE-SW
Trench 3 contained no archaeological features or deposits.		Avg. Topsoil Depth (m)	0.25
		Avg. Subsoil Depth (m)	0.47
		Width (m)	1.40
		Length (m)	8.00

Discussion

The archaeological evaluation at Haddock Rise, Sutton has demonstrated that very limited archaeological remains and deposits are present within the development area. The presence of a single small irregular quarry pit does however suggest that occasional, informal post-medieval/modern quarrying has taken place within the vicinity.

The complete lack of artefacts recovered from the topsoil and well-preserved subsoil also suggests that this part of the western edge of the Sutton ridge is some distance from the Iron Age, Roman and medieval settlement activity seen within other parts of the village.

Acknowledgements

The archaeological evaluation was commissioned by A.K.T. Builders Ltd. Monitoring was undertaken by Dan McConnel (on behalf of Andy Thomas, CHET). Emma

Beadsmoore was CAU Project Manager and Donald Horne (CAU) undertook the surveying. Many thanks to Hayley Roberts for assisting the author on site.

References

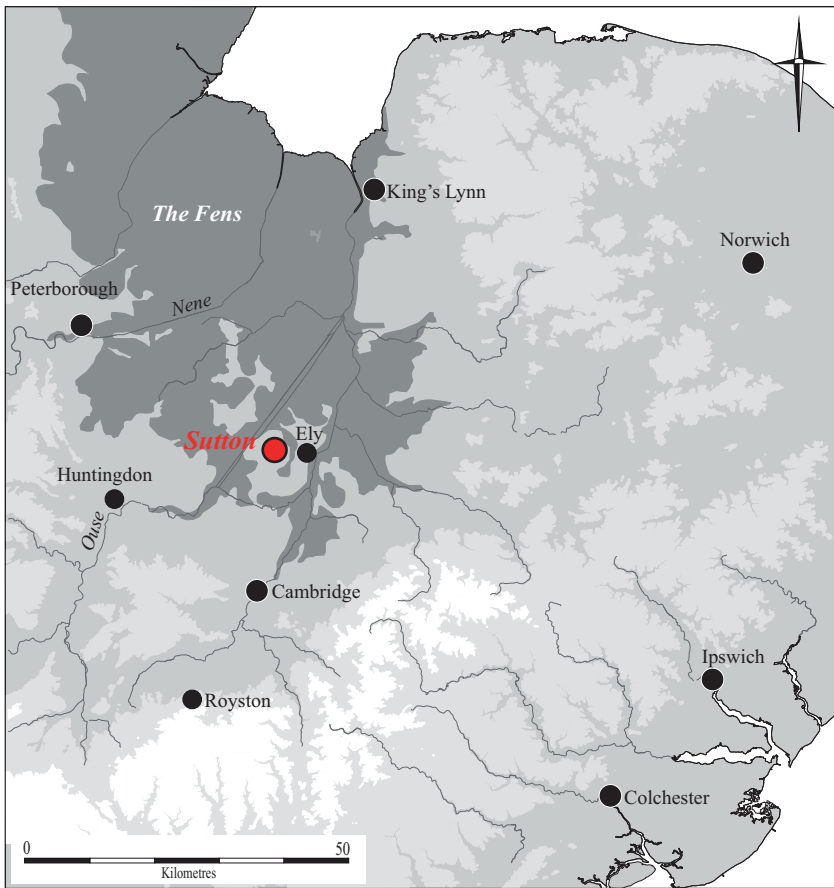
Allen, J.L. and A. Holt. 2010. *Health and Safety in Field Archaeology*. FAME

Beadsmoore, E. 2011. *A Specification for Archaeological Evaluation on Land off Haddocks Rise, Sutton, Cambridgeshire*. CAU

British Geological Survey (BGS), 1980. *Geological Survey, Ely, Sheet 173*. BGS

Spence, C. 1990. *Archaeological Site Manual*. MoLAS, London

Timberlake, S. 2011. *West Lodge Road, Sutton, Cambridgeshire. An Archaeological Evaluation*. CAU Report No.1000



Contains Ordnance Survey Data © Crown Copyright and Database right (2012)

Figure 1. Location Map

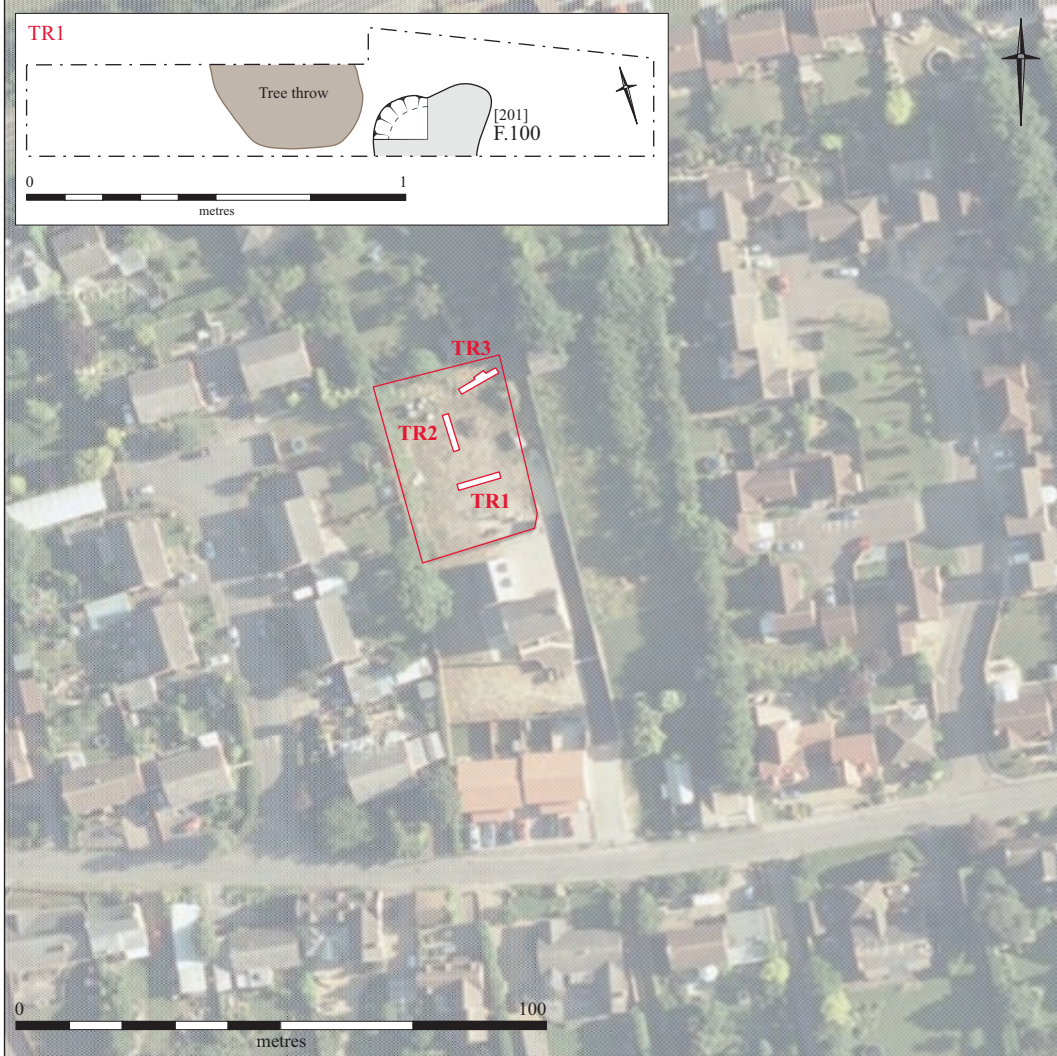


Figure 2. Plan of Trenches and archaeological features, and photograph of quarry pit F.100

OASIS DATA COLLECTION FORM: England

[List of Projects](#) | [Manage Projects](#) | [Search Projects](#) | [New project](#) | [Change your details](#) | [HER coverage](#) | [Change country](#) | [Log out](#)

Printable version

OASIS ID: cambridg3-121406

Project details

Project name	Haddock Rise, Sutton, Cambridgeshire An Archaeological Evaluation Assessment
Short description of the project	Cambridge Archaeological Unit undertook an archaeological evaluation at Haddock Rise, Sutton, Cambridgeshire, prior to a small residential development. The trenching revealed a small post-medieval/modern quarry pit but no other archaeological features or deposits.
Project dates	Start: 15-03-2012 End: 15-03-2012
Previous/future work	No / No
Type of project	Field evaluation
Site status	Local Authority Designated Archaeological Area
Current Land use	Other 13 - Waste ground
Monument type	QUARRY PIT Modern
Significant Finds	NONE None
Methods & techniques	'Targeted Trenches'
Development type	Urban residential (e.g. flats, houses, etc.)
Prompt	Direction from Local Planning Authority - PPS
Position in the planning process	After full determination (eg. As a condition)

Project location

Country	England
Site location	CAMBRIDGESHIRE EAST CAMBRIDGESHIRE SUTTON Haddock Rise, Sutton, Cambridgeshire
Postcode	CB6 2EY
Study area	0.10 Hectares

Site coordinates TL 4354 7856 52.3858242393 0.109384971464 52 23 08 N 000 06 33 E Point
 Height OD / Depth Min: 9.79m Max: 12.10m

Project creators

Name of Organisation Cambridge Archaeological Unit
 Project brief originator Local Authority Archaeologist and/or Planning Authority/advisory body
 Project design originator Emma Beadsmoore
 Project director/manager Emma Beadsmoore
 Project supervisor Matthew Collins
 Type of sponsor/funding body Developer
 Name of sponsor/funding body A.K.T. Builders Ltd.

Project archives

Physical Archive Exists? No
 Digital Archive recipient Cambridge Archaeological Unit
 Digital Archive ID HRS 11
 Digital Contents 'none'
 Digital Media available 'Images raster / digital photography','Survey','Text'
 Paper Archive recipient Cambridge Archaeological Unit
 Paper Archive ID HRS 11
 Paper Contents 'none'
 Paper Media available 'Context sheet','Correspondence','Drawing','Map','Notebook - Excavation','Research',' General Notes','Photograph','Plan','Report','Section','Survey','Unpublished Text'

Project bibliography

1

Publication type Grey literature (unpublished document/manuscript)
 Title Haddock Rise, Sutton, Cambridgeshire An Archaeological Evaluation Assessment
 Author(s)/Editor(s) Collins, M.
 Other bibliographic details 1081
 Date 2012
 Issuer or publisher CAU
 Place of issue or publication CAU
 Description A4 Booklet. Pdf

Entered by Matthew Collins (mc459@cam.ac.uk)
Entered on 20 March 2012

OASIS:

Please e-mail [English Heritage](#) for OASIS help and advice

© ADS 1996-2006 Created by [Jo Gilham and Jen Mitcham](#), email Last modified Friday 3 February 2006

Cite only: <http://www.oasis.ac.uk/form/print.cfm> for this page