

CFA Archaeology Ltd

archaeological consultants

Advice on Archaeology & Planning

Environmental Impact Assessment

Intpretation, Design & Display

Finds/ Environmental Analysis

Field Evaluation & Excavation

Historic Building Recording


Site & Landscape Survey

Geophysical Survey

**Etterby Road, Etterby,
Carlisle, Cumbria.**

**Archaeological Evaluation
Report No. 1898**

 0131 273 4380

 0131 273 4381

 info@cfa-archaeology.co.uk

 www.cfa-archaeology.co.uk

CFA ARCHAEOLOGY LTD

The Old Engine House
Eskmills Business Park
Musselburgh
East Lothian
EH21 7PQ

Tel: 0131 273 4380
Fax: 0131 273 4381
email: info@cfa-archaeology.co.uk
web: www.cfa-archaeology.co.uk

Author	Ian Suddaby MA FSA Scot MifA
Illustrator	Graeme Carruthers MA MAAIS
Editor	Melanie Johnson MA PhD FSA Scot MifA
Commissioned by	Story Homes Ltd
Date issued	May 2011
Version	0
OASIS Reference	cfaarcha1-100581
Planning Application No	1/10/0508
Grid Ref	NY 3863 5705

This document has been prepared in accordance with CFA Archaeology Ltd
standard operating procedures.

**Etterby Road, Etterby,
Carlisle, Cumbria.**

**Archaeological Evaluation
Report No. 1898**

Contents

1.	Introduction	3
2.	Working Methods	4
3.	Archaeological Results	5
4.	Conclusions	10
5.	References	11

Appendices

1.	Trench Results Summary	12
2.	Context Register	12
3.	Colour Slide Photograph Register	13
4.	Digital Photograph Register	14
5.	Drawings Register	15
6.	Finds Quantification	15

Illustrations (bound at rear)

Fig. 1 Site location and evaluation trench plan

Fig. 2 General view of the site from the north-eastern boundary

Fig. 3 Trench 1, south-west-facing section at the north-western end showing the remains of the building as a lens of demolition debris (**101**)

Fig. 4 Trench 3, section through ditches **303** & **305**

Fig. 5 Trench 6, section through possible pit feature **601**

Fig. 6 Trench 6, section through ditch **603**

Fig. 7 Trench 8, section through ditch **801**. The redeposited gravelly deposits (**804**, **807**) can be seen on either side of the ditch with the silty fills (**802-3**) in the middle

1. INTRODUCTION

1.1 General

This report presents the results of an archaeological desk-based assessment and evaluation undertaken by CFA Archaeology Ltd (CFA) in May 2011 at the site of proposed residential housing on land adjacent to Etterby Road, Etterby. Etterby is on the northern bank of the River Eden, 2km north-east of Carlisle, Cumbria (NY 3863 5705, Fig. 1). The work was commissioned by Story Homes Ltd.

A Written Scheme of Investigation (WSI) dated 02 February 2011 was produced by CFA based on a Brief dated 18 January 2011 issued by the Cumbria County Council Historic Environment Service (CCCHES). This required that a desk-based assessment be completed and an evaluation covering 380m² be undertaken within the field containing the proposed development. A trench plan for the evaluation was approved by CCCHES prior to the fieldwork.

1.2 Objectives

The objectives of the evaluation were:

- to determine the location, extent, date, character, condition, significance and quality of any surviving archaeological remains liable to be threatened by the proposed development. An adequate representative sample of the area where archaeological remains are potentially threatened will be studied.

1.3 Acknowledgement

We acknowledge the site visit made by Jeremy Parsons of CCCHES during the fieldwork.

2. WORKING METHODS

2.1 General

Work was conducted with regard to the Institute for Archaeologists' Standards and Guidance. Recording of all elements was done following established CFA methods.

2.2 Desk-Based Assessment

A desk based assessment was undertaken by examining historic map coverage for the area and other readily available cartographic information on pre-recent land use in the development area. Records held by the Council Historic Environment Record (HER) and English Heritage (EH) were consulted as appropriate.

A visual inspection of the site was carried out prior to work starting. This recorded any surface features of potential archaeological interest, areas of potentially significant disturbance, and hazards and constraints to the undertaking of the work.

2.3 Trial Trenching

As a result of the desk-based assessment, on site discussions with Story Homes, and following a site visit from Jeremy Parsons, the agreed trenching plan was amended. A trench was repositioned to evaluate a building identified from historic maps. An area along the south-western side of the site was unavailable for trenching due to the presence of nesting birds. It was agreed at the site visit that a linear trench would be excavated alongside Etterby Road to investigate the possibility of buildings being present in that area.

The trenches were excavated by a wheeled back-acting excavator using a flat-bladed bucket under constant archaeological supervision to remove topsoil and other deposits down to natural subsoil or the first significant archaeological horizon, whichever was reached first. Any further excavation required to fulfil the objectives of the evaluation was carried out by hand.

On-site recording was carried out according to standard CFA procedures, principally by drawing, by 35mm and digital photography and by completing standard CFA record forms.

The trenches were backfilled at the end of the evaluation on completion of recording. Their locations were recorded by industry standard surveying equipment.

3. ARCHAEOLOGICAL RESULTS

3.1 Desk-Based Assessment

The village of Etterby lies to the north-west of Carlisle on the northern bank of the River Eden. Etterby is first mentioned in 12th century documents, although the origins of the name suggest a settlement on the site prior to the Norman Conquest. Nearby, Etterby Wath, one of the lowest fording points of the Eden, is also first mentioned in medieval documents but is likely to have much earlier origins. Aerial photographs show remains indicative of Iron Age settlement and agricultural practices in the vicinity of the site.

Cartographic

The development site lies within a slightly larger field shown on the Ordnance Survey (OS) First Edition (1866). The plot now containing 'The Beeches' has been added since 1866 along the north-eastern side of the field, reducing it to its present size. The Second Edition (1901) shows this plot and, within the development site, a roofed building is depicted in the northern corner of the field. The 1926 map shows no changes from 1901. By 1937, the building in the northern corner appears to be unroofed and a rectangular (NE-SW aligned) enclosure is depicted in the northern corner of the field. The 1957 and 1966 maps show no changes from 1937. In 1972, neither the building, nor the enclosure, are shown. By 1976, the buildings and gardens to the south-west of the development have achieved their current form whereas those to the north-east, including 'The Beeches', are not shown in their current form, even by 1992.

Documentary

Cumbria HER does not hold any records of sites within the proposed development area but a number of important sites of suspected prehistoric, Roman, medieval and post-medieval date lie in the immediate vicinity. Etterby Wath Ford (HER Nos. 41754) crosses the Eden just to the south on a continuation of Etterby Road. A number of multi-period linear, circular and rectangular earthworks and enclosures lie around Stainton to the west. These include a hengiform enclosure at Powlees Lane (HER No 41816), a second circular enclosure at Greystones (HER No 41815) and linear/rectangular enclosures or fields (HER No 9750). There are also a number of prehistoric (HER No 464), Roman and other findspots (eg HER No 471, 476, 18946, 19669, 19732-3, 42241). Listed buildings include houses (HER No 40538) and schools (HER No 41443).

English Heritage (EH) does not hold any records of sites within the proposed development area but a number of important multi-period sites lie in the surrounding area. Many of these are also in the Cumbria HER, although the names differ and grid references are needed for comparisons. Monuments not on the HER include Rig & Furrow earthworks at Belah (EH No. 1382869) to the north-east of Etterby and two roundhouses or barrows (EH No. 1383249) at Stainton to the north-west of Etterby.

3.2 Evaluation

The development site lay within an overgrown field containing long grass and self-seeded small trees. Nesting birds were present in undergrowth along the south-western site boundary (beyond the JCB visible in Fig. 2).

Eight trenches (Fig. 1, Appendix 1) with an area of 390m² (just over 5% of the site) were excavated. In the text below, contexts numbers are in bold and parentheses and are further described in Appendix 2.

The topsoil (**001**) consisted of c.0.3m of softish brown sandy silt with occasional small stones; heavily root affected around the edges of the field, this merged into a firm agricultural subsoil (**002**) of grey-brown sandy silt, also with occasional small stones. This was around 0.2m deep. The natural subsoil (**003**) was a soft, wet, red-orange-pink sandy silt with frequent small rounded cobbles.

Field drains were present in all trenches. Archaeological features were recorded in all trenches except Trench 5.

3.2.1 Trench 1

Trench 1 was located in the northern corner of the site and aimed to assess the survival of the building which appears on historic maps. A deposit (**101**) of broken bricks, slates, a dressed stone, lumps of mortar, glass, ceramic and a bone was located in the northern 3m of the trench (Fig. 3). This had a depth of 0.15m. There were no structural remains. This deposit likely represents demolition debris.

Two linear ditches were also recorded in the trench. Ditch **102** was 1.6m wide, 0.15m deep and was aligned WNW-ESE. A thin primary deposit of soft brownish-yellow sandy silt (**106**), underlay a firmer upper fill of yellowish-brown sandy silt (**103**). No finds were recovered.

The second ditch (**104**) was 0.6m wide, 0.1m deep and was aligned NE-SW. The single fill (**105**) consisted of a mid brown sandy silt. No finds were recovered.

3.2.2 Trench 2

Trench 2 was parallel to Trench 1 and contained a single ditch (**201**) which continued the alignment of **104**. In this trench it had a width of 0.9m. No finds were recovered.

3.2.3 Trench 3

Trench 3 was located in the western corner of the site and was aligned E-W. Three linear ditches were recorded.

Ditch **301** was 0.8m wide, 0.25m deep and was aligned NW-SE. Parallel with a clay-piped field drain, it contained a single fill (**302**) of mid brown sandy silt. No finds were recovered.

Ditch **303** was 0.6m wide, 0.2m deep and was aligned NE-SW. A primary fill (**307**) of soft creamy-yellow sandy silt underlay a deposit of grey sandy silt (**304**) containing charcoal in the lower levels.

Ditch **303** appeared to adjoin a second N-S aligned ditch (**305**) with a single grey sandy silt fill (**306**) and the section (Fig. 4) showed that fill **304** overlay fill **306**.

Field drains cut ditches **303** and **305**.

3.2.4 Trench 4

Trench 4 was located parallel and to the south of Trench 3. Two linear ditches were recorded.

Ditch **401** was 0.8m wide, 0.1m deep and was aligned NNW-SSE. It appeared to be the same feature as ditch **301**. The single fill **402** was also a mid brown sandy silt.

Ditch **405** was 0.75 m wide, 0.15m deep and was aligned NNW-SSE. This may be the same feature as ditch **305** and it contained a similar fill (**406**), a grey silty sand. No finds were recovered.

3.2.5 Trench 5

Trench 5 was located alongside Etterby Road and aimed to assess the potential for buildings alongside the road. No archaeological remains were present.

3.2.6 Trench 6

Trench 6 was located in the eastern corner of the site. A number of small trees were removed prior to the excavation and all deposits in this trench were heavily root affected. Three ditches and a small pit were recorded.

Pit **601** (Fig. 5) was located at the east end of the trench in an area of sandy natural subsoil. Irregular in plan, it measured 0.6m by 0.45m. The single fill (**602**) consisted of a mottled grey-brown silty sand which contained small pieces of coal-shale. No finds were recovered.

Ditch **603** (Fig. 6) was 0.9m wide and 0.35m deep. It was aligned NW-SE. A single fill of soft brownish-grey sandy silt (**604**) was recorded. No finds were recovered.

Ditch **605** had a clay-piped field drain inserted into it and the width was as a consequence uncertain. The depth was less than 0.1m and the single fill (**606**) consisted of a firm brown sandy silt. It was aligned NE-SW. No finds were recovered.

Ditch **607** was 0.75m wide, 0.2m deep and was aligned NE-SW. The single fill (**608**) consisted of a soft yellow-brown sandy silt. No finds were recovered.

3.2.7 Trench 7

Trench 7 contained three ditches. Ditch **701** was 0.8m wide, 0.2m deep and was aligned NE-SW. The single fill (**702**) consisted of a soft grey silty sand. No finds were recovered.

Ditch **703** was 0.8m wide, 0.35m deep and was aligned NW-SE. The single fill (**704**) consisted of a soft yellow-grey-brown silty sand. No finds were recovered.

Ditch **705** was a continuation of **605** in Trench 6. Also cut by a field drain, the width was again uncertain but the fill (**706**) was the same as **606**.

3.2.8 Trench 8

Trench 8 contained two ditch features. Ditch **801** (Fig. 7) was 1.5m wide and 0.65m deep. It was aligned close to E-W but appeared to curve slightly within the trench. In plan and section, redeposited orange gravels with grey silty lumps (**804**, **807**) were present within the ditch, on either side of a light grey sandy silt (**802**). This overlay a darker grey sandy silt which contained charcoal towards the base of the feature. No finds were recovered.

Ditch **805** was 0.4m wide and 0.25m deep. It contained a single fill (**806**) of grey silty sand. No finds were recovered. This may be the same feature as **701**.

3.3 The Finds, by Sue Anderson

Table 1 summarises the finds quantities from the evaluation. These are quantified by context number in Appendix 6.

Find type	No.	Wt/g
Pottery: medieval	3	62
Pottery: modern	14	488
Ceramic building material	4	3831
Glass	4	51
Stone	2	266
Iron	2	19
Animal bone	1	40

Table 1. Finds quantities.

3.3.1 Pottery

Three sherds of oxidised medieval gritty ware, two body sherds and a rim, were found in ditch fill **304**. They were sooted and probably pieces of cooking pots. The rim was a slightly everted beaded rim similar to 12th-14th-century types from Carlisle (McCarthy & Brooks 1988, fig 121, nos 610 and 612).

Modern pottery was recovered from demolition layer **101** and ditch fill **402**. It included a plantpot base, fragments of transfer-printed factory-made whiteware bowls and plates, slipped redware base fragments, a blackware handled jar, and a body sherd of brown-glazed English stoneware. This group is likely to be of 19th- or early 20th-century date.

3.3.2 Building materials

Various fragments of building material were recovered from the demolition layer **101**. These comprised two fragments of white press-moulded chimney rim, a large piece of a roughly-formed red brick with coarse inclusions (101 x 80mm), a large sheet of cementitious render with brick fragments adhering to the underside, four pieces of coloured and mould-decorated window glass, two nails, two fragments of Welsh slate roofing tiles, and a moulded window/door jamb of Coade stone or similar pseudo-stonework. All of this material is probably of late 19th or 20th-century date.

3.3.3 Biological evidence:

One animal bone, a sheep femur shaft with chop-marks at one end and gnawing at the other, was also collected from **101**.

4. CONCLUSIONS

The desk-based assessment confirmed that no previously known sites lie within the development site. Cartographic sources indicate that a building and enclosure existed within the development site. The building appeared to have been constructed between 1866 and 1901 with the enclosure being added between 1925 and 1937. Neither are depicted by 1972. It also indicated the presence of archaeological remains in the vicinity of the development, consisting of cropmarks and artefact findspots.

Eight evaluation trenches amounting to 390m² (just over 5% of the area) were excavated within the development area.

The deposit of building rubble and debris (**101**) recorded in Trench 1 appears to be the remains of the structure recorded on the historic maps. No structural remains were present and the deposit suggests the demolished structure has been removed. The finds suggest a 19th-20th century date.

A series of primarily shallow ditches were recorded across the development site. The ditches ranged in width from 0.6m to 1.6m, and in depth from 0.1m to 0.35m, with ditch **801** attaining a depth of 0.65m. Differences in the fills, alignments and profiles suggest that more than one phase of digging is represented. Some of these ditches were parallel to clay pipe field drains, suggesting that they may relate to an earlier phase of field drainage, and some were cut by field drains suggesting that they at least pre-date the mid-20th century. It is possible that these ditches relate to post-medieval or recent agricultural activities. Few finds were recovered from these ditches; pottery of medieval date came from ditch **303** (fill **304**) and pottery of 19th/20th century date came from ditch **401** (fill **402**).

Ditches **104** and **201** in Trenches 1 & 2 conform in location to the enclosure recorded on 20th century maps. No finds were recovered and the ditch appears to have naturally filled in.

A single isolated pit (**601**) containing coal-shale is likely to be modern in origin.

The natural subsoil within the site was both soft and wet. This may help to explain both the lack of settlement alongside Etterby Road and the absence of cropmark evidence from the area between Etterby and Stainton.

The responsibility for deciding the scope of any further work required lies solely with the CCHES.

The project archive, comprising all CFA record sheets, maps and reports will be deposited with Tullie House, Cumbria.

5. REFERENCES

Bibliographic

McCarthy, M & Brooks, C 1988 *Medieval Pottery in Britain AD 900–1600*. Leicester University Press.

Cartographic

Ordnance Survey First Edition Map 1863 - 1:2500

Ordnance Survey First Edition Map 1868 – 1:10,560

Ordnance Survey Second Edition 1901 - 1:2500

Ordnance Survey Second Edition 1901 - 1:10,560

Ordnance Survey Third Edition 1925 - 1:2500

Ordnance Survey 1938-52 – 1:10, 560

Ordnance Survey 1937 - 1:2500

Ordnance Survey 1957 – 1:10, 560

Ordnance Survey 1967-8 - 1:2500

Ordnance Survey 1976 - 1:2500

Ordnance Survey 1992 - 1:10,000

APPENDIX 1: Trench Results Summary

Trench No.	Length (m)	Width (m)	Total Area (m ²)	Features
1	40	1.5	60	Lens of demolition debris 2 ditches 3 field drains
2	40	1.5	60	1 ditch 4 field drains
3	30	1.5	45	3 ditches 5 field drains
4	30	1.5	45	2 ditches 6 field drains
5	40	1.5	60	4 field drains
6	30	1.5	45	3 field drains Pit 3 ditches
7	25	1.5	38	2 ditches 2 field drains
8	25	1.5	38	2 ditches
			Overall Total: 391	

APPENDIX 2: Context Register

Context	Feature	Description
001	Topsoil	Mid-brown sandy silt. Heavily root affected around the edges of the site
002	Soil	Grey-Light-Brown sandy silt with occasional small stones. Heavily root affected around the edges of the site
003	Natural subsoil	Orange-pink or pinkish red sandy silt with locally frequent small metamorphic cobbles. Heavily root affected around the edges of the site
101	Demolition layer	Brown sandy silt with inclusions of mortar, broken bricks, broken drains, slates, glass, pottery & bone
102	Cut for ditch	Linear cut. Close to E-W
103	Ditch fill	Yellowish brown firm sandy silt with occasional small stones
104	Cut for ditch	Same as 201. NE-SW.
105	Ditch fill	Light-mid brown firm sandy silt with occasional small stones
106	Ditch fill	Creamy brownish-yellow soft sandy silt
201	Cut for ditch	Same as 104. NE-SW
202	Ditch fill	Light-mid brown firm sandy silt with occasional small stones
301	Cut for ditch	Linear cut. Same as 401
302	Ditch fill	Light-mid brown firm sandy silt with occasional small stones
303	Cut for ditch	Curvilinear cut. Either cut by or joins 305. NW-SW
304	Ditch fill	Grey silty sand with charcoal flecks increasing towards the base.
305	Cut for ditch	Linear cut. Close to N-S
306	Ditch fill	Grey, iron-flecked silty sand. Underlies 304
307	Ditch fill	Creamy yellow soft sandy silt primary fill of 303
401	Cut for ditch	Linear cut. Same as 301. Close to NW-SE
402	Ditch fill	Light-mid brown firm sandy silt with occasional small stones
403	Cut for ditch	Field drain cut?
404	Ditch fill	Field drain fill? but no pipe
405	Cut for ditch	Linear cut. NW-SE
406	Ditch fill	Grey, iron-flecked silty sand.
601	Cut for possible pit	Irregular in plan
602	Pit fill	Mottled grey-brown silty sand. Heavily root affected. Contains coal-shale fragments

603	Cut for ditch	Linear cut. NW-SE
604	Ditch fill	Soft brownish-grey sandy silt with occasional stones
605	Cut for ditch	Linear cut. NE-SW. Same as 705
606	Ditch fill	Soft grey-mid-brown silty sand with occasional stones
607	Cut for ditch	Linear cut. NE-SW
608	Ditch fill	Soft yellow-brown silty sand with occasional stones
701	Cut for ditch	Linear cut. NE-SW. May be same as 805
702	Ditch fill	Grey silty sand becoming more yellow and stony towards the base
703	Cut for ditch	Linear cut. NW-SE
704	Ditch fill	Soft yellow-grey-brown silty sand with occasional stones
705	Cut for ditch	Linear cut. NE-SW. Same as 605
706	Ditch fill	Soft grey-mid-brown silty sand with occasional stones
801	Cut for ditch	Linear cut. Close to E-W
802	Ditch fill	Dark grey sandy silt with occasional pebbles
803	Ditch fill	Light grey sandy silt with charcoal flecks increasing towards the base. Organic mottling
804	Ditch fill	Compact orange sand & gravel with pockets/lenses or grey sandy silt
805	Cut for ditch	Linear cut. NE-SW. May be same as 701.
806	Ditch fill	Grey silty sand becoming more yellow and stony towards the base
807	Ditch fill	Compact orange sand & gravel with pockets/lenses or grey sandy silt

APPENDIX 3: Colour Slide Film Register

Shot	Description	From	Conditions
Film 1			
1-2	Trench 1 general view	NW	Bright
3-4	Trench 1 NW end excavated showing deposit 101	SE	Bright
5-6	Trench 1 ditch 102 section	NE	Sun/Shade
7-8	Trench 1, ditch 104 section	SW	Sun/Shade
9-10	Trench 2, general view	NW	Sun/Shade
11-12	Trench 2, ditch 201-2 section	NW	Overcast
13-14	Trench 2, general view	SE	Sun/Shade
15-16	Trench 2, SW facing section through 201	SW	Sunny
17-18	Trench 3, ditch 301-2 section	SE	Bright
19-20	Trench 3, general view	W	Sun/Shade
21-22	Trench 3, ditch 303-4 section (Slot 1)	SSW	Sunny
23-24	Trench 4, general view	W	Overcast
25-26	Trench 4, ditch 401-2	S	Overcast
27-28	Trench 4, ditch 405-6	S	Overcast
29-30	Trench 3, ditches 303, 305 sections (Slot 2)	N	Sun/Shade
Film 2			
1-2	Trench 6, pit 601 section	W	Sun/Shade
3-4	Trench 6, ditch 603 section	WNW	Sun/Shade
5-6	Trench 6, ditch 605 section	E	Sun/Shade
7-8	Trench 6, ditch 607 section	SW	Sun/Shade
9-10	Trench 6, general view	W	Sunny
11-12	Trench 6, general view	E	Sunny
13-14	Trench 7, general view	N	Sunny
15-16	Trench 7, ditch 701-2	S	Sun/Shade
17-18	Trench 7, ditch 703-4	SE	Sun/Shade
19-20	Trench 7, general view with ditch 705 in the foreground	S	Sun/Shade
21-22	Trench 8, ditch 805-6 section	SW	Overcast
23-24	Trench 8, ditch 801 section	NE	Overcast
25-26	Trench 8, ditch 801 & general view	NW	Overcast
27-28	Trench 8, ditch 801 & general view	SE	Bright/Shade

APPENDIX 4: Digital Photograph Register

Photo No.	Description	Taken from	Conditions
1-12	Pre-ex general site views	Varied	Bright
13-14	Trench 1 general view	NW	Bright
15	Trench 1 general view	SE	Bright
16	Trench 1 NW end excavated showing deposit 101	SE	Bright
17-18	Trench 1 ditch 102 section	NE	Sun/Shade
19-20	Trench 1, ditch 104 section	SW	Sun/Shade
21	Trench 2, general view	NW	Sun/Shade
22	Trench 2, ditch 201-2 section	NW	Overcast
23	Trench 2, ditch 201-2	SW	Overcast
24	Trench 2, general view	SE	Sun/Shade
25-26	Trench 2, SW facing section through 201	SW	Sunny
27-28	Trench 3, ditch 301-2 section	SE	Bright
29	Trench 3, ditch 301-2 section	SW	Bright
30	Trench 3, ditch 301-2 section	NW	Sun/Shade
31	Trench 3, general view	W	Sun/Shade
32-33	Trench 3, ditch 303-4 section (Slot 1)	SSW	Sunny
34	Trench 4, general view	W	Overcast
35	Trench 4, ditch 401-2 section	S	Overcast
36	Trench 4, ditch 403-4 section	WSW	Overcast
37	Trench 4, ditch 405-6 section	S	Overcast
38-40	Trench 3, ditches 303, 305 sections (Slot 2)	N	Sun/Shade
41	Trench 3, ditches 303, 305 sections (Slot 2)	E	Sun/Shade
42	Trench 3, Slot 2, W end showing ditch 303 in section with fills 304, 307	N	Sun/Shade
43-46	As 38-40, better light	N	Overcast
47-48	Trench 3, general view of Slots 1-2 in ditches 303, 305	W	Overcast
49	Trench 5, general view	WSW	Sun/Shade
50-51	Trench 5 and the view NE to Trenches 1-2	W & SW	Sun/Shade
52	Trench 6, pit 601 section	W	Sun/Shade
53	Trench 6, ditch 603 section	WNW	Sun/Shade
54	Trench 6, ditch 605 section	E	Sun/Shade
55	Trench 6, ditch 605 section	SE	Sun/Shade
56	Trench 6, ditch 607 section	SW	Sun/Shade
57-58	Trench 6, general view	W	Sunny
59	Trench 6, general view	E	Sunny
60-62	General site views SW to NW from the E end of Trench 6		Sunny
63	Trench 7, general view	N	Sunny
64	Trench 7, ditch 701-2	S	Sun/Shade
65	Trench 7, ditch 703-4	SE	Sun/Shade
66-67	Trench 7, general view with ditch 705 in the foreground	S	Sun/Shade
68-69	Trench 8, ditch 805-6 section	SW	Overcast
70-71	Trench 8, ditch 801 section	NE	Overcast
72	Trench 8, ditch 801 & general view	NW	Overcast
73	Trench 8, ditch 801 & general view	SE	Bright/Shade
74	Trench 8, ditch 801 & general view	S	Bright/Shade
75	Trench 8, ditch 801 & general view	W	Bright/Shade

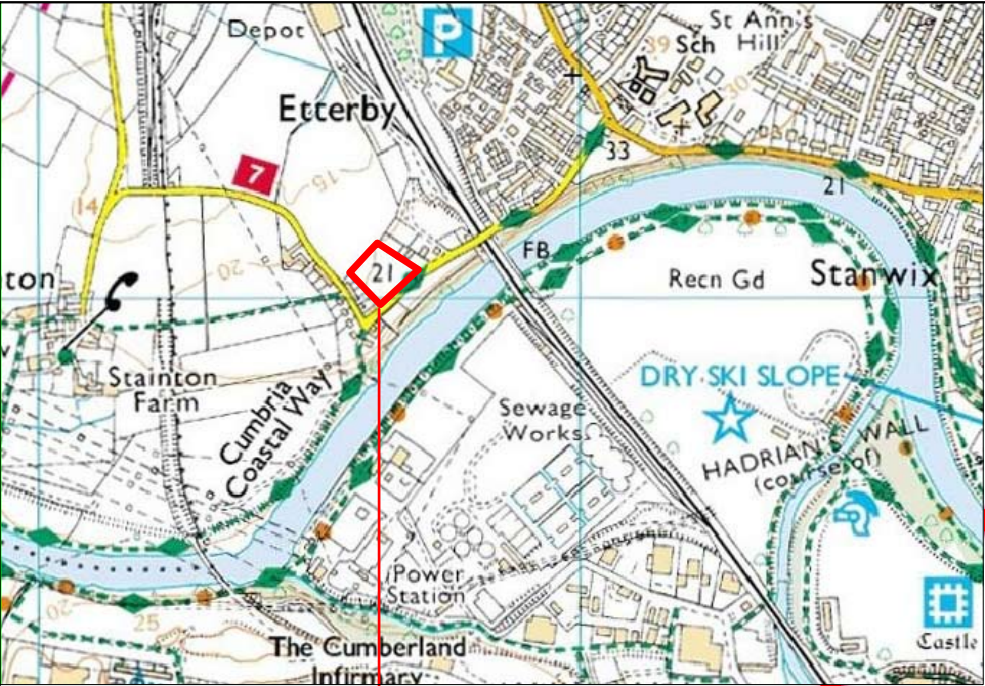
APPENDIX 5: Drawings Register

Drawing No.	Sheet	Scale	Description
1	1	1:50	Trench 1 plan showing deposit 101 and ditches 102, 104
2	1	1:10	Trench 1, ditch 104 section
3	1	1:10	Trench 1, ditch 102 section
4	1	1:10	Trench 1, SW facing section through deposit 101
5	2	1:50	Trench 2 plan showing ditch 201
6	2	1:50	Trench 3 plan showing ditches 301, 303, 305
7	2	1:10	Trench 3, ditch 305 section
8	2	1:10	Trench 3, ditch 305 section (south facing)
9	2	1:10	Trench 3, ditches 303, 305 sections (north facing)
10	3	1:50	Trench 4 plan showing ditches 401, 403, 405
11	3	1:10	Trench 4, ditch 405 section
12	3	1:10	Trench 4, ditch 401 section
13	4	1:50	Trench 6 plan showing pit 601 & ditches 603, 605, 607
14	4	1:10	Trench 6 pit 601 section
15	4	1:10	Trench 6 ditch 603 section
16	4	1:10	Trench 6 ditch 605 section
17	4	1:10	Trench 6 ditch 607 section
18	4	1:50	Trench 7, plan showing ditches 701, 703, 705
19	4	1:10	Trench 7, ditch 701 section
20	4	1:10	Trench 7, ditch 703 section
21	Daybook	1:100	Trench 5, plan
22	5	1:50	Trench 8 plan showing ditches 801, 805
23	Daybook	1:10	Trench 8, ditch 801 section
24	Daybook	1:10	Trench 8, ditch 805 section

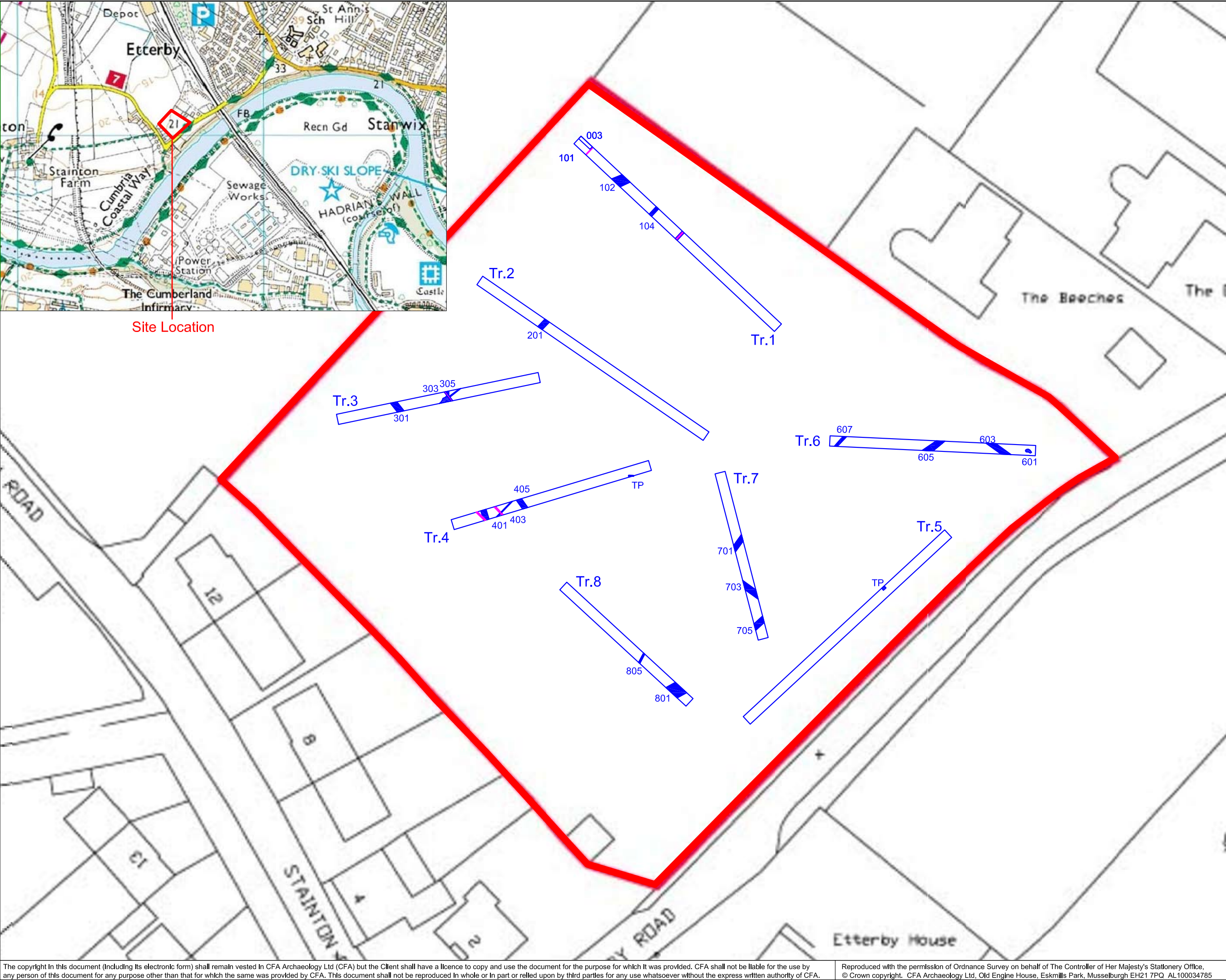
APPENDIX 6: Finds Quantification

Trench	Context	Find type	No.	Wt (g)	Notes	Spotdate
1	101	Pottery	4	194	LPME plantpot base, LSRW bowl base, 2 flakes REFW floral TP blue	19th/20th c.
		CBM	2	507	chimney rim, white press-moulded fabric	19th/20th c.
		CBM	1	2207	brick, roughly made, coarse inclusions, 101 x 80mm	19th c.
		CBM	1	1117	moulded cement/Coade stone frag, window or door jamb?, hollow at rear filled with lime mortar	19th c.?
		Mortar	1	2258	sheet of cementitious render with brick frags adhering to one side	19th/20th c
		Glass	4	51	moulded and coloured window glass	19th/20th c.
		Iron	2	19	nails, handmade	pmed+
		Stone	2	266	Welsh slate frags	pmed
		Bone	1	40	sheep femur, hacked at one end, gnawed at the other	
3	304	Pottery	3	62	dark red medieval gritty ware, including jar rim	12th-14th c.
4	402	Pottery	10	294	LBW handled jar, LSRW base, REFW shell-edged plate rim and blue TP bowl rim, brown-glazed ESW body	19th/E.20th c.

Notes: CBM – ceramic building material; LPME – late post-medieval unglazed earthenware; REFW – refined factory-made whitewares; LBW – late blackwares; ESW – English stonewares; TP – transfer-printed.



Site Location



- Key:
- Site Boundary
 - Evaluation Trench
 - Archaeological Features
 - Field Drains

CFA
ARCHAEOLOGY LTD

CFA ARCHAEOLOGY LTD
The Old Engine House
Eskmills Park
Musselburgh
East Lothian, EH21 7PQ
t: 0131 273 4380
f: 0131 273 4381
e: info@cfa-archaeology.co.uk
w: www.cfa-archaeology.co.uk

Fig. No:	1	Revision:	A
Title: Site location and Evaluation Trench Plan			
Project: Etterby Road, Etterby, Carlisle, Cumbria			
Client: Story Homes			
Scale: 1:500@ A3			
Drawn by:	GC	Checked:	LW
Report No:		1898	



Fig. 2 General view of the site from the north-eastern boundary



Fig. 3 Trench 1, south-west-facing section at the northern end showing the remains of the building as a lens of demolition debris (101)


Key:	Fig. No:	2-3	Revision:	A	Client:	Story Homes	 <div>CFA ARCHAEOLOGY LTD The Old Engine House Eskmills Park Musselburgh East Lothian, EH21 7PQ t: 0131 273 4380 f: 0131 273 4381 e: info@cfa-archaeology.co.uk w: www.cfa-archaeology.co.uk</div>		
	Title:								
	Project:								
Scale:	Etterby Road, Etterby, Carlisle, Cumbria						Drawn by: GC	Checked: LW	Report No: 1898



Fig. 4 Trench 3, section through ditches 303 & 305



Fig. 5 Trench 6, section through possible pit feature 601


Key:	Fig. No:	4-5	Revision:	A	Client:	Story Homes	 <div>CFA ARCHAEOLOGY LTD The Old Engine House Eskmills Park Musselburgh East Lothian, EH21 7PQ t: 0131 273 4380 f: 0131 273 4381 e: info@cfa-archaeology.co.uk w: www.cfa-archaeology.co.uk</div>
	Title:						
	Project:						
Scale:	Etterby Road, Etterby, Carlisle, Cumbria						Drawn by: GC Checked: LW Report No: 1898



Fig. 6 Trench 6, section through ditch 603



Fig. 7 Trench 8, section through ditch 801. The redeposited gravelly deposits (804, 807) can be seen on either side of the ditch with the silty fills (802-3) in the middle

Key:

Fig. No: 6-7 Revision: A Client: Story Homes

Title:

Project:

Etterby Road, Etterby, Carlisle, Cumbria

Scale:

Drawn by: GC

Checked: LW

Report No: 1898