

CFA Archaeology Ltd

archaeological consultants

Advice on Archaeology & Planning

Environmental Impact Assessment

Interpretation, Design & Display

Finds/ Environmental Analysis

Field Evaluation & Excavation

Historic Building Recording

Site & Landscape Survey

Geophysical Survey

**Excavation at the confluence of
Dye Water/Kersons Cleugh,
Fallago Rig Windfarm,
Longformacus, Scottish Borders**

Data Structure Report No. 1877

CFA ARCHAEOLOGY LTD

The Old Engine House
Eskmills Business Park
Musselburgh
East Lothian
EH21 7PQ

Tel: 0131 273 4380
Fax: 0131 273 4381
email: info@cfa-archaeology.co.uk
web: www.cfa-archaeology.co.uk

Author	Ian Suddaby MA FSA Scot MifA
Illustrators	Leeanne Whitelaw BSc MAAIS Shelly Werner BA MPhil PhD
Editor	Melanie Johnson MA PhD FSA Scot MifA
Commissioned by	Wind Prospect Ltd
Date issued	June 2011
Version	1
OASIS Reference No.	cfaarcha1-100676
Planning Reference No.	
Grid Ref	NT 6111 5885 (centre)

This document has been prepared in accordance with CFA Archaeology Ltd
standard operating procedures.

**Excavation at the confluence of
Dye Water/Kersons Cleugh,
Fallago Rig Windfarm,
Longformacus, Scottish Borders**

Data Structure Report No. 1877

CONTENTS

1.	Introduction	4
2.	Working Methods	5
3.	Archaeological Results	6
4.	Conclusions	16
5.	Bibliography	17

Appendices

1.	Context Register	18
2.	Photograph Register	20
3.	Drawings Register	25
4.	Samples Register	26
5.	Finds Quantification	27
6.	<i>Discovery & Excavation in Scotland</i> Entry	29

Plates

1	Bead	14
2	Potsherd	14
3	Spindle whorls	15
4	Knife	15

Figures (bound at rear)

1. Plan of access road around the Kersons Cleugh bridge with a trench layout and showing the Scheduled area
2. Extract from the 1st Edition OS map (Berwickshire, Sheet 8, 1862)
3. General view of the site on the far side of Kersons Cleugh from the NE.
4. Pre-excavation photo from the east of the structure in Trench 1
5. Trench 1, view of the post-holes (**140**, **142**) under the paving (**106**) from the south
6. Trench 1 excavation plan showing the underlying pit and possible post-holes
7. Trench 1, N–S section
8. Trench 1, the perimeter stone alignment (**130**) in the south-west quad after machine removal of overburden
9. Trench 1, the hearth stone (**137**) in the foreground with the perimeter stone alignment (**130**) beyond
10. Trench 1, view of the NE-facing entrance passage paving **106/118**
11. Trench 1 with the turf removed

12. Trench 2 excavation plan
13. Trench 2, N-S section
14. Pre-excavation photo from the west of the structure in Trench 2
15. Trench 2, general view from the west
16. Trench 3 excavation plan
17. Trench 3 from the north
18. Trench 4 from the west. The fragmentary wall **401** is at the top left

1. INTRODUCTION

1.1 General

This report presents the results of an archaeological excavation undertaken by CFA Archaeology Ltd (CFA) in March and April 2011 at the confluence between Kersons Cleugh and the upper Dye Water to the west of Longformacus in the Scottish Borders (Fig. 1, NGR: NT 6111 5884). The work was undertaken on behalf of Wind Prospect Ltd.

1.2 Project Background

The Scottish Government has granted Section 36 Consent for the construction of the Fallago Rig Windfarm in the Scottish Borders subject to a number of conditions. A Written Scheme of Investigation (WSI) dated 10 December 2010 covering the archaeological mitigation measures for the overall development has been submitted to and approved by Scottish Borders Council.

An addendum to the WSI dated 21 March 2011 covers the archaeological excavation of a number of features that had been located on the access road route at the above location (Fig. 1). These are Phase 2 works as described in para 2.4 of the earlier WSI.

1.3 Archaeological Background

The access road crosses the edge of an abandoned settlement known as Kersons Cleugh (National Monument Record of Scotland (NMRS) No. NT65NW 10). That part of the settlement to the east of the stream is a Scheduled Monument (SM) No. 4549, known as 'Byrecleugh Farmstead, 1900m WNW of' (Fig. 1). No settlement related features are shown on historic maps, although features associated with animal management (Fig. 2) are depicted. Figure 3 shows the Scheduled part of the site in the foreground with the excavation site to the left of the sheep pens in the distance with the Dye Water beyond.

2. WORKING METHODS

2.1 General

CFA Archaeology Ltd follows the Institute for Archaeologists' Code of Conduct, and Standards and Guidelines for Excavations as appropriate.

The northern extent of the access road was surveyed and marked out by RJ McLeod staff.

2.2 Excavation

An area measuring 10m x 8m was stripped of turf and topsoil from over each of two small sub-rectangular structures (Trenches 1 & 2). This fully uncovered the structures and an area around them. All internal features and deposits were 100% excavated. Sections were excavated through the wall lines to reveal their construction in section.

It was however apparent that archaeological features extended beyond the two 10m x 8m trenches and Trenches 1 & 2 were linked to form Trench 4. The bank identified by the ENTEC survey was incorporated into Trench 4.

The third possible structure was investigated in Trench 3. Sections were excavated over the wall lines in this trench to reveal their sequence.

All features were fully recorded using CFA pro forma recording sheets. All sections were drawn at 1:10 or 1:20 and plans at 1:20. Photographs were taken using colour slide film and digital recording equipment. A Total Station was used for surveying purposes and levels were taken using the TBMs set up by RJ McLeod (Fig. 1).

Once the excavation objectives described in the addendum to the WSI (dated 21 March 2011) were achieved, a mechanical excavator using a flat-bladed bucket was used to remove the bulk of the wall core in Trench 1 and allow the recording of its foundations. All such excavation was monitored by an appropriately qualified archaeologist.

3. ARCHAEOLOGICAL RESULTS

3.1 General

In the text below, context numbers are in bold and parentheses. These are further described in Appendix 1.

A number of structural features were visible within the wayleave of the windfarm access track. These included two sub-rectangular structures (Trenches 1 & 2) and a length of poorly preserved bank. Separate from the two structures and the length of bank, a less clear section of walling (Trench 3) also survived which may be the vestigial remains of a third structure.

A large wooden sheep penning area (buchs) lies to the west of the structures (Figs 3-4) and the turf in this area was extremely thin and mossy. Within the pens, a narrow central shedding passage had been roughly paved using water-worn stones which may have been robbed from the excavated structures.

3.2 Trench 1: (Structure 1) Figs 4-11

Pre-excavation photographs (Fig. 4) were taken on arrival. The structure measured 8m by 6.2m overall and was grass-covered with sparse heather growing from the bank and patchy bracken in the internal area. Few stones protruded through the turf and there was no clear entrance. Trench 1 was divided into 4 quadrants (A–D, Fig. 6).

A possible buried soil (**116, 128**) was preserved under much of the structure. This was cut by pit **132**.

The earliest features on the site were a pit (**132**), a ditch (**125, 131**) and two probable post-holes (**140, 142**). The pit and the ditch underlay the bank defining the edge of Structure 1 and both post-holes were sealed by the entrance passage paving (**106**).

Pit **132** (not shown on Fig. 6) was only partially excavated as it lay below the baulk between Quads C and D (Fig. 7). It measured 0.9m in length and had a depth of 0.4m. The three fills (**133, 134, 135**) consisted of brownish-pink or creamy pink gritty silts which contained charcoal chunks. Both post-holes (Figs 5–6) were around 0.2m in diameter and 0.25m deep. They contained charcoal flecked dark brown silt (**141, 143**) and **142** appeared to be cut through a deposit of stony gritty silt containing larger lumps of charcoal (**144**) which lay within an area containing an uneven natural subsoil surface (**147**).

The earliest features which formed part of Structure 1 appeared to comprise of a shallow ditch (**125, 131**). This appeared to underlie the bank and may relate to the marking out of the structure. It contained a fill of grey clay and gravel (**115, 126**) and an alignment of stones (**111, 130**, Figs 6, 8–9), placed end to end. When fully exposed (Fig. 8) these stones formed a partial sub-rectangular enclosure with a length of 5.6m and width of 3.1m aligned E–W. This alignment of stones appeared to conform to the highest point of the bank pre-excavation.

Within this boundary, a floor deposit of firm pinkish clay-silt (**109, 110, 123**) was recorded in Quads A, C & D (Fig. 7), whereas Quad B was paved with flat and water-worn stones (**106**, Figs 7, 10). Quad B also contained a NE facing splayed entrance passage (**118**, Fig. 10); the feature sloped slightly down into the structure and had an external diameter of 1.8m, an internal diameter of 0.8m and a length of 2m. The 2m length of the entrance passage may be the best evidence for the original thickness of the bank which was at no point well defined on both sides. A very large flat stone (Fig. 6) lying just outside the passage may have been intended to block the passage when the structure was not in use. A water worn stone located on the inner left hand side of the entrance passage (looking inwards) had a natural cup-mark in its upper surface and may have been a pivot stone for a door.

Internally, a flat stone (**137** shown in the foreground of Fig. 9) may have been a hearth. This appeared to be heat fractured and several artefacts as well as calcined bone were concentrated around it. Within Quad A, a short east to west aligned stretch of wall (**127**) was revealed. Its purpose is unknown.

The stone alignment (**111, 130**) appeared to have been covered with a mound of gravelly silt (**107**, Fig. 6) which formed the core, or body, of the bank. This deposit also overlay the floor deposits (**109, 110, 123**) where they abutted the stone alignment. Between these banks (Fig. 7) and overlying the floor, deposits **103, 108** consisted of an orange-brown gritty silt. The bank material was covered with a capping of stones (**104, 105**, Fig. 11), some of which appeared to have been carefully laid. The site was sealed by a thin topsoil and turf (**100**).

Finds from Trench 1 (Section 3.7, Appendix 5) included half of a pale blue glass bead (U/S), a fired clay loom-weight (**109**) and three stone spindle whorls (**109, 130**), all of which are likely to be of 7th–9th century date. There were also fifteen lithics from various contexts and a quantity of modern glass from surface deposits. Charcoal was recovered from around the possible hearth, from deposits underlying the paving and from deposits within negative features.

3.3 Trench 2: (Structure 2) Figs. 12-15

The structure was grass-covered, with reeds growing in the internal area (Fig. 14). Few stones protruded through the turf. There was a possible entrance represented by a dip in the bank in the eastern end of the southern side (Quad C) and the northern side appeared denuded, perhaps due to its proximity to the estate track and the access to the sheep pens. The structure measured 8.6m by 7.2m externally and was aligned east to west. Trench 2 was divided into 4 quadrants (A–D, Fig. 12).

The earliest feature in Trench 2 appeared to be a shallow deposit of grey clay (**237**) which filled a depression in the natural gravels. This underlay **233**, a dark brown stony soil deposit. To the south of the internal area in Quads C & D (Fig. 13), a mound of soil and small stones (**249**) underlay a deposit containing numerous large water worn stones (**204**) within a grey-brown silty matrix (**202**). These ran under deposit **201** and wall **203** which were associated the structure. In the SW corner of Quad D, these stones (**204**) appeared more formally laid and may have formed a wall (**205**), a feature which ran west into Trench 3 (**305**). Deposit **202**, outside the

structure, was similar to **229/233** within it but the layers could not be traced with certainty through the stones.

Overlying **233** in Quads C & D was a layer of flat paving stones (**234**) which coincided in level with the base of the perimeter wall (**203**), although the stratigraphic link was lost to burrowing. In the northern quads A & B, deposit **233** was absent and a thin organic lens (**235**) abuted the paving and ran up towards the base of wall **244** (= **203**).

The wall of Structure 2 (**203/215/244**) was best preserved in the southern quads C & D (Fig. 15) where a height of 0.7m and a width of 0.4m-0.6m were recorded. The possible entrance in Quad C was not authentic. To the outside of the wall in Quads C & D was a deposit of brownish-orange clean silt (**201**, Fig. 15) and this appeared to form a supporting or insulating deposit for the wall. This bank deposit was browner in colour (**217**) and poorly preserved in Quads A & B. In these quads the wall (**244**) was largely reduced to a misaligned scatter of stones. In part of Quad A, the wall had been completely robbed out (**232**) and the resulting trench filled with loose small stones and grey silt (**231**). Other localised points of stone removal (eg. **226**) were recognised.

In Quad A, robbing (**232**) of wall **215/244** revealed that intense iron-panning was present in the natural sandy gravels below the former alignment of the wall and this was also apparent in **241** (Fig. 13), which may reflect the drainage of water through the wall into their foundation trenches.

A matrix of loose grey silt (**246**) was recorded within the core of the wall and the entire structure was riddled with mouse/mole sized burrows. Similar deposits (**210**) were also present against the inner face of the wall, so much so that it initially appeared as if the wall had been cut (**209**) into internal deposits **207**, **208**.

Internally, overlying the paving (**234**) and the organic lens (**235**) were deposits of grey (**207**) and orange-brown silt (**208/236**), the latter representing erosion from the wall backing material (**201/217**). Occasional large stones were present (Fig. 15). All deposits were sealed by topsoil (**200**).

Over the whole of Trench 2, but especially in Quad A where deposits were shallower, both soil processes, and the dry conditions prevailing during the excavation combined to make a conclusive stratigraphic/structural sequence uncertain.

Finds from this trench included a sherd of Anglo-Saxon pottery and a stone spindle whorl from that portion of **204** which underlay the structure wall in Quad D. A whittle-tang knife was recovered from the bank material (**201**) behind wall (**203**). More modern finds recovered from **204** may be intrusive. Eleven lithics were recovered from dispersed contexts. Items of modern agricultural metalwork, bottle glass and shooting accessories were recovered from unstratified and surface contexts.

3.4 Trench 3: Figs. 16-17

Trench 3, to the west of Trench 2, investigated the possible third structure. It measured approximately 9.5m by 4m with slight extensions to the NW, W & SW (Figs. 16-17). Four stone features and a ditch were recorded.

The earliest features were a poorly defined curving deposit of stones (**305**) which appeared to form a continuation of **205** in Trench 2, and a ditch (**313**). These were succeeded by stone alignments (**303**, **304**) and the most recent structure was a curving wall (**302**).

The curving deposit of stones **305** ran for a length of 4m and had a width of between 1m and 2m. Founded on natural subsoil, few coherent facing stones were identified on either side. The NW end had been cut by wall **304**. A layer of grey soil (**307**) which overlay the lower portions of **305**, ran under **304**.

Ditch **313** (not illus) was recorded during the excavation of a slot through wall **302** at its intersection with stone alignment **303**. Aligned WSW–ENE it had a width of 1.2m and depth of 0.25m. The primary fill consisted of a grey silt (**320**) and this was overlain by an irregular deposit of dark grey silt (**314**) which may be turf. Both deposits were overlain by the upper fill (**316/319**), a grey turfy silt. Monitored topsoil stripping to the west of the site showed that ditch **313** was not present in that area.

Wall **303** had a single face on the same alignment as ditch **313**, but the eight facing stones overlay the cut for the ditch and unless slumped into their current position, must post-date that feature. Roughly parallel with wall **304** to the south, only 2m of **303** remained, but the structure, consisting of stones with their short sides facing the wall, was characteristic of many other walls on the site. Wall **304** also had a single face and was of the same construction style as **303**. A length of 3.2m was recorded and if this is the same feature as **303**, it has a width of between 1.4m and 1.6m, tapering to the SW.

In the NW corner of the trench and overlying the infilled ditch (**313**), a well defined curving wall (**302**) was recorded. This feature had a length in the trench of 3.4m and a width of 1.1m. The single surviving course was formed from large and angular quarried stones with a core of stone chips, which was unlike any other stone feature on the site. A length of curving wall with an identical width and similarly quarried stones was identified outside the road line to the north during a pre-excavation site visit. Stones forming **302** overlay those forming **303** (Fig. 17).

Overlying the natural subsoil was a patchy deposit of dark grey silt **311** and above this, was a turfy grey silt (**307/310**). In the north of the trench, deposit **307/310** and walls **303** and **304** were all overlain by a layer of imported, sterile, orange sand and gravel (**308**). The whole of Trench 3 lay within an area of grassy moss and there was little topsoil (**301**) between this surface vegetation and the structural remains. This contrasted with the remainder of the site and this area may have been subjected to relatively recent stone-robbing and/or levelling.

Finds from Trench 3 included a whetstone from **310** and 12 lithics from U/S (**300**), topsoil (**301**) and lower soil deposits **310** and **311**. Quantities of modern agricultural metalwork and bottle glass were recovered from unstratified and surface contexts.

3.5 Trench 4: Figs 6, 12 & 18

Trench 4 was assigned to the area which was excavated to link Trenches 1 and 2. It was excavated because structural stonework extended to the south of Trench 2, Quad C and the turf in this area was notably uneven. This appeared to be the bank recorded by ENTEC. A secondary aim was to record a trackway which passed through the site between Trenches 1 and 2.

Uneven and in places patchy water-worn stones (**402**, **403**) covered most of the trench. A fragmentary wall-face (**401**, Fig. 6, 18) with a maximum length of 2.4m was recorded on a roughly north-south alignment. To the south of the wall, the paving was absent and a continuation of the wall had been robbed out in this area (Fig. 18 top centre). A trench through **402**, **403** showed that the paving overlay natural subsoil (**003**).

Visible on the surface as a linear east-west aligned depression with a flat base, the trackway (**405**) had a width of around 1.2m and the wheel ruts were marked by a scatter of small broken stones. The point at which this trackway crossed the stream to the east was not apparent, but to the west the track could be easily traced for several hundred metres.

3.6 Watching Brief

A watching brief was maintained during topsoil stripping operations on the level grassland to the east of Kersons Cleugh and to the west of the excavation site once the wooden pens had been removed. No archaeological features were recorded.

Due to the level of the finished access road across the new bridge over Kersons Cleugh, the excavation site was covered over, first with sand and then with crushed stone from the borrow pit. The trenches were carefully filled with sand and compacted using a tracked excavator before the remainder of the site was covered over. A watching brief was maintained whilst this took place.

3.7 The finds, by Sue Anderson

Table 1 summarises the finds quantities from the excavation and watching brief. These are quantified by context number in Appendix 5.

Find type	No.	Wt (g)
Pottery	1	20
Fired clay	5	446
Stone objects	7	135
Coarse stone	3	-
Lithic	38	85
Glass	95	621
Iron	37	1153
Copper alloy	3	16
Aluminium?	1	43
Slag	4	213
Bone	18	4

Table 1. Finds quantities.

Pottery

One body sherd of handmade pottery in a sandy fabric with sooting externally (Pl. 1) was found in the silts (**202**) around stones **204** of Structure 2 (Quad C). This is comparable with handmade Anglo-Saxon pottery from England.

Fired clay

Five fragments of fired clay ‘bun-shaped’ loomweights with narrow central holes were found on floor surface **109** in Structure 1 (Quad A). These are typical of Middle Saxon sites in England, and can be dated to the 7th–9th centuries.

Stone

Seven stone small finds were recovered. Five objects were spindle whorls (Pl. 2), of which four were found in Structure 1 (Quads A and D), three in association with the loomweights. One spindle whorl was a flat roughly shaped disc, whilst the others were plano-convex and probably made on a lathe. At least three were decorated with incised concentric rings. Although spindle whorls are simple items which remained largely unchanged throughout the medieval period, these objects are typical of examples from Middle Saxon sites in England (e.g. Flixborough, Lincs). Later medieval examples are more likely to be biconical in form. Two other stone small finds were found: a sandstone pebble with a depression in one surface (**102**, Structure 1) and a possible whetstone (layer **310**, Trench 3).

Two larger coarse stone objects were collected, one in two fragments. The latter was a sample of the fire-cracked ?hearthstone in Structure 1 (**137**, <21>). The other was a ?pivot stone from paved floor **106**.

Lithics

A relatively large assemblage of lithic artefacts was recovered. Fifteen of the artefacts were associated with Structure 1 and were found throughout the fill. Eleven were found in Structure 2 layers and within the foundation trench fills of the walls. The remainder were from deposits in Trench 3 or were unstratified. Most of the artefacts comprised debitage (flakes, chips etc), although some showed signs of retouch. At least two blades were present in the assemblage. The majority of the group was flint or chert, but other stone types were also present.

Glass

A fragment of a pale blue/green glass bead (Pl. 3) was an unstratified find from Trench 1. This is comparable with Anglo-Saxon and Anglo-Scandinavian beads from York and Yorkshire, and is likely to be contemporary with the other finds of 7th–9th-century date from Structure 1.

The majority of the glass fragments were of 19th/20th-century date and were found in topsoil or the upper layers of the site. Fragments included pieces of brown/green bottles, uncoloured glass bottles, and handblown vessels in pale green glass. Three

sherds were recovered from around the tumble of stones **204**, near Structure 2, but the majority of fragments were from topsoil in Trench 1 (**100**) and Trench 3 (**301**).

Metalwork

An iron knife (Pl. 4; two fragments) was found in deposit **201** in Structure 2. The object will require an x-ray to determine its exact form, but it is a whittle tang knife of probable Saxon (or medieval) date.

Other iron finds comprised a number of handmade and machine-made nails, a large horseshoe, and some unidentified fragments. A fragment with mineral-preserved wood was found in Structure 1 (**101**). Most of these finds were recovered from the upper levels of the site and are likely to be of post-medieval or modern date, but a few fragments require x-rays to confirm their function and date.

Three copper alloy shotgun cartridges or cartridge caps were found in topsoil deposits.

One other metal find comprised a sheet of aluminium (unstratified, Structure 2).

Slag

Four fragments of ferrous slag were recovered from deposit **310** and as unstratified finds in Trench 4. Whilst the three fragments from the latter may be of post-medieval date, the small piece from **310** is more consistent with early smithing activity.

Bone

Fragments of calcined animal bone were collected from deposits within both structures, and it is likely that further bone will be recovered from the samples of these contexts (**136, 224**).

Discussion of the finds evidence

A number of finds recovered from the two structures at Fallago Rig are probably or certainly of Anglo-Saxon type and suggest that at least one of the structures here was of that period. Although not typical of the timber-built Anglian structures excavated elsewhere in lowland Northumbria and southern Scotland, similar building groups have been found at a few upland sites in the north of England and are dated around the 8th century (e.g. Simy Folds in Upper Teesdale and Bryant's Gill in Cumbria; Higham 1986).

The finds from this site are comparable with Middle Saxon finds which are dated to the 7th–9th centuries, and include objects associated with textile working (spindle whorls, loomweights), a fragment of a ceramic cooking pot, a dress accessory (glass bead) and a knife. The presence of several items associated with textile working may indicate that Structure 1 was used as a workshop. One fragment of ferrous slag may be of early date; upland structures of contemporary date in northern England have produced quantities of ferrous metalworking debris.

It is likely that the lithic artefact assemblage is of prehistoric date and was accidentally redeposited in the structures either during their construction or following their demolition. The assemblage probably indicates prehistoric activity in the near vicinity however.

Other finds suggest that the structures may have been used for the occasional deposition of rubbish in the recent past, the majority of finds being glass bottles and other vessels, as well as metal finds. The presence of a few shotgun cartridges may indicate that the hollows formed by the disused buildings were used as rudimentary shooting butts in the later 19th and 20th centuries.

Plates



Plate 1. Potsherd, external surface showing sooting.



Plate 2. Four of the five stone spindle whorls.



Plate 3. Glass bead.



Plate 4. Knife.

4. CONCLUSIONS

The excavation at Kersons Cleugh revealed two buildings of similar size but markedly differing structure. The structure in Trench 1 appears to be Anglo-Saxon in date on the evidence of the finds whereas that in Trench 2 may be, if not more recent in origin, at least longer-lived as the wall contained differing constructional styles.

Overall, the evidence from the finds indicates three periods of use for the area.

- Prehistoric for the many dispersed lithics;
- Anglo-Saxon for the weaving accessories, knife and handmade pottery;
- 19th–20th-century for the ceramics, glass and most of the utilitarian agricultural/sporting metalwork.

Roy's map of 1745–55 shows no traces of cultivation or buildings at the confluence between Kersons Cleugh and the Dye Water and no historical maps other than the Ordnance Survey (OS) show any buildings, enclosures or tracks in this area. The OS First Edition map (Berwickshire Sheet 8, 1862, Fig. 2) shows a sub-square enclosure which is annotated 'Sheepfold' to the west of Kersons Cleugh. An entrance is shown in the centre of the southern side. The 1908 OS 1:10,560 map suggests that a circular enclosure with a possible entrance in the SSE has replaced the sub-square enclosure from the First Edition and that an east-west aligned rectangular enclosure, with entrances in the south and north has been added immediately to the SW. The 1957 OS 1:10,560 map again shows both enclosures. The 1981 OS 1:10,000 map shows approximately the current shape of the sheep pens and the estate tracks.

Curving wall **302** may be part of the circular structure which was built between 1862 and 1908. This wall post-dates other walls on the site and was constructed from quarried stones. It may be noted that this wall is rather more substantially built than other circular sheepfolds in the Upper Dye valley. No clear traces were found of either the 19th-century sheepfold or the later rectangular enclosure. The remains of stone alignments and walls recorded in Trenches 3 and 4 may also be associated with the penning of animals or the storage of materials.

Structurally, most of the earlier walls were formed from an alignment of stones, laid end to end, which were overlain by soil and further stones, laid side by side. This type of construction was recognised in Structure 1, part of Structure 2 and Trench 3. The most prominent and best preserved portion of wall in Structure 2 was however of more conventional drystone formation.

Visually, the excavated structures resemble shielings and as such cannot be assigned a date on surface morphology. The Scheduled structures to the east of Kersons Cleugh are larger and resemble 'Pitcarmick' type structures, being sub-rectangular although tapering slightly and with rounded ends. These are expected to be Early Historic in date.

Parallels for the excavated buildings at Kersons Cleugh are not easily found although elements of their structures occur frequently. Anglian period buildings in upland area have been recorded in Teesdale and Cumbria (Higham 1986). A medieval turf building with a hearth and a partly paved floor was discovered at Cronberry, East Ayrshire (Baker 2000).

A Post-excavation Research Design will be produced under separate cover.

The project archive, comprising all CFA record sheets, maps and reports, will be deposited with the National Monuments Record of Scotland (NMRS) and copies of reports will be lodged with the Scottish Borders Sites and Monuments Record (SMR).

A summary statement of the results of this programme of works will be submitted for publication in *Discovery and Excavation in Scotland* (Appendix 6).

5. BIBLIOGRAPHY

Bibliographic

Baker, L 2000 'Gasswater Open Cast Coal Scheme, Cronberry', DES 2000, 23

Higham, N 1986 *The Northern Counties to AD 1000*. A Regional History of England, Longman, London

Cartographic

Roy, General W, 1745-55 Military Survey of Scotland

Ordnance Survey First Edition 1:10, 560 Berwickshire 1862, Sheet 8

Ordnance Survey 1:10,560 Berwickshire 1908

Ordnance Survey 1:10,560 Berwickshire 1957

Ordnance Survey 1:10,000 Berwickshire 1981

APPENDIX 1: Context Register

No	Trench	Description
100	1	Vegetation and Thin Topsoil
101	1	Grey Silty Matrix Around Stones Within Structure 1, Quad. D
102	1	Orange-Brown Gravelly Sand Outside Structure 1
103	1	Orange-Brown Silt Inside Structure 1,
104	1	Structure 1 Wall, In-situ Stones
105	1	Structure 1, Tumbled Stones
106	1	Paved Floor
107	1	Orange-Brown Gritty Silt and Small Stones, mounded wall material
108	1	Brown-Orange Silt with Charcoal Flecking. Quad. A, Above 109 and paving 106
109	1	Orange Clay Floor Level of Structure 1, Quad. A
110	1	Remnant of Clay Floor. Quad. D
111	1	Possible Remnant of Structure Wall (3 Stones) Seen in Slot Section. Quad. D
112	1	Floor. Set Stone Feature. Quad. A
113	1	Cut of c.112
114	1	Fill of c.112
115	1	Light Grey Clay with Charcoal Flecks and Gravel Under c.111. Quad. D
116	1	Orange Gritty Silt with Pebbles and Stones. Sterile (Old Ground Surface?)
117	1	Medium Grey Silty Clay Under c.123
118	1	Doorway of Structure 1
119	1	Matrix Between Paving Slabs c.106
120	1	Charcoal Stained Soil in Sondage 4, Quad. B
121	1	Heat Affected Sandy Silt. Sondage 4, Quad. B
122	1	Orange-Brown Sand with Pebbles and Carbon Flecking. Sondage 4, Quad. B
123	1	Deposit abutting wall Stones 130. Possible floor, Sondage 4, Quad. B
124	1	Dark to Medium Brown Silty Grit Matrix with Small Stones and Flecks of Charcoal. Quad. C
125	1	Cut of Wall Line. Sondage 4, Quad. B
126	1	Dark Charcoal Stained Fill of c.125
127	1	Wall Face in South Facing Section. Quad. A
128	1	Pebbles, Clay and Grit Under Paving. Quad. B
129	1	Orange-Brown Silt in Doorway (c.118). Quad. B
130	1	Stones of Wall Line in Quad. B Sondage
131	1	Cut for Stone Wall (c.111). Quad. D
132	1	Cut for Possible Sub-circular Pit.
133	1	Top Fill for c.132
134	1	Middle Fill for c.132
135	1	Bottom Fill for c.132
136	1	Charcoal Rich Deposit incl. Burnt Bone. Above Stone (sample 21, c.137). Fill of c.112, Quad. A/D Baulk
137	1	Heat Cracked Stone. Between c.136, c.138. Fill of c.112. Quad. A/D Baulk
138	1	Heat Affected Soil Below c.137. Fill of c.112. Quad A/D Baulk
139	1	Brown Clay Layer Below c.111 and Above c.115. Quad. D. (see Drawing No.32, sheet 27)
140	1	Round Cut into c.144. Quad. B
141	1	Fill of Post Hole c.140. Medium Brown with Charcoal. Quad. B
142	1	As c.140, 0.1m to North East. Quad. B
143	1	Reddish Brown Silt with Occasional Grit and Small Gravel. Quad. B. Fill of c.142
144	1	Made Ground. Mixed Redeposited Natural and Soil. Cut by c.140, c.142
145	1	Possible Packing Stone. Fill of c.142. Quad. B
146	1	Brown and Creamy White Streaky Primary Deposit in c.142. Quad. B
200	2	Turf and Topsoil
201	2	Brownish Orange Silt Behind Wall c.203
202	2	Grey-Black Silt, Peaty Silt Around Stones c.204
203	2	Structure 2, Wall Face and Structure

204	2	Jumbled Stones. Paving or Drainage Under c.201, c.203
205	2	Possible East-West Wall in Southwest Corner. Links with c.305
206	2	Random Stones within c.207, c.208. Inside Structure 2
207	2	Greyish Peaty Silt within Structure 2
208	2	Brownish-Orange Silt within Structure 2. Cut by c.209
209	2	Possible cut for Structure 2 Wall.
210	2	Soft Silty Fill of c.209. Between c.209 and c.203
211	2	Orange-Brown Silt to West of Structure 2. Possibly Same as c.216
212	2	Possible Bank Material. Quad. A
213	2	Fill of c.209. Quad. A
214	2	Cut for Stone Wall c.245. Quad. A
215	2	Stone Wall. Possibly Same as c.203. Quad. A
216	2	Levelling Deposit. Quad. A
217	2	Possible Bank Material. Quad. A
218	2	Fill of c.209. Quad. A
219	2	Fill of c.214. Quad. A
220	2	Possible Bank Material. Quad. A
221	2	Material under Wall c.203. Dark Brown Soft Soil. Quad. A
222	2	Levelling Deposit? Same as c.228. Quad. D
223	2	Levelling Deposit? Base for c.203. Same as c.224, c.229. Quad. D
224	2	Levelling Deposit? Base for c.203. Same as c.223, c.229. Quad. D
225	2	Cobbles and Sand Matrix. Spread. Same as c.230. Quad. D
226	2	Stone Void Fill. Quad. D
227	2	Spread. Quad. D
228	2	Levelling Deposit? Same as c.222. Quad. D
229	2	Levelling Deposit? Base for c.203. Same as c.223, c.224. Quad. D
230	2	Cobbles and Sand Matrix. Spread. Same as c.225. Quad. D
231	2	Fill in Possible Robber Trench c.232. Quad. A
232	2	Robber Trench Containing c.231. Quad. A
233	2	Stony Fill Below c.208, Above Natural. Quad. D
234	2	Paved floor surface Between c.208, c.233. Quad. C
235	2	Medium to Dark Brown Silty Clay with Charcoal. Quad. C
236	2	Orange-Brown Band Below Topsoil c.200. Above Dark Humic Band c.207. Quad. B
237	2	Grey Clay with Medium Stone Inclusions. Abutts Wall c.244. Underlies c.235. Above Natural. Quad. B
238	2	Orange Lens Underlying c.236, c.207. Above c.208. Quad. B
239	2	Brown Soil, Possible Wall Fill, Stone Inclusions >15cm, Clay. Quad. B
240	2	Orange Sandy Lens Overlying Outer Extent of c.239 Wall Fill. Quad. B
241	2	Gravelly Subsoil, Light Brown, Stone Inclusions >15cm, Less Clay than c.239. Quad. B
242	2	Compacted, almost concreted natural directly below wall. Similar to c.247. Quad. B
243	2	Grey-Beige Soil. No Inclusions. Adjacent to c.240, Above c.239. Quad. B
244	2	Wall Stones in East-Facing Section. Quad. B
245	2	Stone Wall Running Roughly West and Continuing Under Balk of Trench 3. Quad. A
246	2	Silty Dark Brown Soil. Fill of Wall c.203
247	2	Iron Panning Running Under Wall c.215, Following Course for Length of Wall. Particularly Evident in Terminus of c.215 at Robber Trench c.232. Compact, Yellow-Grey Cobbles, 0.04m-0.20m with High Iron Content. Similar to c.242. Quad. A
248	2	Friable, Red-Brown Sand. Frequent Cobbles, 0.03m-0.30m, Surface Running Alongside c.247. In Section, Structure 2, Quad. A
249	2	Deposit over natural, W facing section, Quad D
300	3	Unstratified
301	3	Topsoil and Deturfing
302	3	Thick Wall, 1.1m at North End
303	3	Alignment of Stones, Possibly Cutting c.302
304	3	Alignment of Stones, Possibly Cutting c.305. May Equal Cut c.214, Fill c.219
305	3	Curving Poorly Defined Wall, Cut by c.304

306	3	Stones to South and Southwest of c.305
307	3	Grey-Black Peaty Silt to South of c.304, Northeast of c.305
308	3	Orange Sand and Gravel Between c.303 and c.304
309	3	Dark Yellow-Brown Fill of Possible Stone Robbing Wall c.302
310	3	Brownish Yellow Sand, Gritty Silt Under c.308
311	3	Mid-Brown Gritty Soil Under c.307
312	3	Dark Grey Silt, Charcoal Under c.311
313	3	Cut for Ditch Running Alongside c.303 and Under c.302
314	3	Dark Lower Fill of Ditch c.313
315	3	Possible Void in c.305 Left by Post
316	3	Upper Fill of Ditch c.313
317	3	Levelling Deposit
318	3	Levelling Deposit
319	3	Upper Fill of Ditch c.313
320	3	Grey Material Under c.314 in East-Facing Section of Sondage
321	3	Possibly Natural Sand Running Under c.320
322	3	Ditch Fill
400	4	Unstratified
401	4	Wall Face Running South from Southeast Corner of Structure 2
402	4	Concentration of Stones in Southwest Corner
403	4	Concentration of Stones in Southeast Corner
404	4	Sub-circular Greyish Turfy Patch
405	4	Wheel Ruts, Part of Old Track Through Site. Running East-West

APPENDIX 2: Photographic Register

Colour Slide (SLR) Film 1 and Digital

SLR	Digital	Description	From	Conditions
	1-3	Trench 3, Pre-Ex	NW	Bright
	4-7	Trench 2 and Trench 4 Bank, incl. Digi Panorama	SSE	Bright
	8	Trench 4 Bank	SSE	Bright
	9-11	Trench 1, Pre-Ex	E	Bright
	12-15	Site General View	NNE	Bright
	16-26	Site General View	S, SSE	Bright
	27-29	Trench 2, Pre-Ex, Reeds Cut	W	Sunny
	30	Trench 1, Quad. D, Stones Exposed	W	Overcast
	31	Trench 1, Quad. D, Stones Exposed	SW	Overcast
	32-33	Trench 1, Quad. D, Stones Exposed	NW	Overcast
	34	Trench 1, Quad. D, Stones Exposed	E	Overcast
	35	Trench 1, Quad. D, Close-up of Possible Quern in Wall	E	Overcast
	36-37	Trench 2, Quad. B, Test Pit in SW Corner, Stones Cleaned	N, plan from W	Overcast
	38-39	Trench 2, Quad. D, Cleaned	WNW	Overcast
	40-42	Trench 2, Quad. D, Cleaned	SW	Overcast
	43-44	Trench 2, Quad. D, Cleaned	E	Overcast
	45-46	Trench 2, Quad. B, Test Pit in SW Corner, Down to Humic Lense Over Possible Natural	N, plan from W	Overcast
	47-50	Trench 2, Quad. B, E Facing Section	E	Wet

Colour Slide (SLR) Film 2 and Digital

SLR	Digital	Description	From	Conditions
	51-52	Trench 1, Quad. B, Cleaned	ESE	Overcast
	53-54	Trench 1, Quad. B, Cleaned	WNW	Overcast

	55-57	Trench 1, Quad. B, Close-up	W	Overcast
	58-59	Trench 1, Quad. B, Close-up	E	Overcast
	60-61	Trench 2, Quad. B, Cleaned	S	Overcast
	62	Trench 2, Quad. B, Cleaned	NW	Overcast
	63-65	General Site Views	N, NW	Overcast
	66-67	Trench 1, Quad. B, Possible Entrance Alignment	NE	Overcast
	68	Trench 1, Quad. B, Possible Entrance Alignment	SW	Overcast
	69-70	Trench 1, Quad. B, Possible In-situ Outer Wall Alignment	SE	Overcast
	71-72	Trench 2, Quad. A, Cleaned	NW	Overcast
	73-74	Trench 2, Quad. A, Cleaned	SW	Overcast
	75	Trench 1, Quad. B, Stones in Centre Exposed	NE	Overcast
	76-78	Trench 1, Quad. B, Stones in Centre Exposed, General and Close-up Views	S	Overcast
	79	Trench 2, Quad. B, Wall Face in Slot	S	Overcast
	80-83	Trench 2, Quad. B, Wall Face in Slot	E	Overcast
	84	Trench 2, Quad. A, Orange Bank Material on N Side	S	Overcast
	85	Trench 2, Quad. A, Orange Bank Material on N Side	W	Overcast
	86-88	Trench 2/3, Quad. A, General Views of Possible W/SW Circular Feature Appearing	SE, NE	Overcast
	89-93	Trench 2, Quad. B, Plan View, Deposits N/S of Wall	E	Overcast
	94-96	Trench 1, Quad. B, Record Shot of Stones Around Edge of Paving	SE, NE	Overcast
	97-98	Trench 2, Quad. A, Location of Burnt Deposit (sample 1) in Base of Cut.	W	Sun/ Shade
	99-100	Trench 1, Quad. C, Cleaned	E	Sunny
	101-104	Trench 1, Quad. C, Cleaned	NW	Sunny
	105-106	General Site Views	SE	Sunny
	107-108	Trench 2, Quad. D, Wall Elevation	N	Sun/ Shade
	109-111	Trench 2, Quad. D, Views of Wall c.204 Overlying Stones	SE, E	Sunny
	112-117	Trench 3, Cleaned with Site Views	N	Sunny
	118-121	Trench 3, Cleaned with Site Views	NE	Sunny
	122-133	Trench 3, Cleaned with Site Views	W	Sunny

Colour Slide (SLR) Film 3 and Digital

SLR	Digital	Description	From	Conditions
	134-135	Trench 3, Cleaned with Site Views	E	Sunny
	136	Trench 2, Quad. D, c.201 Removed, onto Stones	S	Sunny
	137-138	Trench 2, Quad. D, Plan View	E	Sunny
	139-143	Trench 4, Cleaned, Between Trench 1, Quad. B, Trench 2, Quad. C	W	Sunny
	144-145	Trench 2, Quad. A, c.209, c.214. Down to Natural and Concreted Natural	N, E	Sunny
	146	Trench 2, Quad. A, General View Showing Sondage	NE	Sunny
	147	Trench 2, Quad. A, Sondage, W Facing Section Showing Cut c.214, Fill c.219. Cut by c.209, Fill c.213	W	Sunny
	148-150	Trench 2, Quad. D, Extension to S	S	Sunny
	151-158	General Site Views	NNW, NNE	Sunny
	159-161	Trench 1, Quad. A, Cleaned	WNW	Sunny
	162	Trench 3, Showing Planning	S	Sunny
	163-164	Trench 1, Quad. A, Cleaned	SE	Sunny
	165-166	Trench 1, Quad. A, Cleaned	S	Sunny
	167-169	Trench 2, Quad. C, Cleaned	N	Sunny

Colour Slide (SLR) Film 4 and Digital

SLR	Digital	Description	From	Conditions
	170-173	Trench 2, Quad. C, Cleaned and General View	W	Sunny
	174-175	General Site Views	NW	Sunny
	176-178	Trench 1, Quad. D, Stones on Approx. Alignment of Inner Wall. Pre-Ex	N, E	Overcast
	179-180	Trench 1, Quad. D, Stone Alignment c.108, Pre-removal of Overlying Slab	E	Overcast
	181-187	Trench 1, Quad. D, W Facing Section	W	Bright
	375	Trench 1, Quad. A, Slot Section, General View	W	Overcast
	376	Trench 1, Quad. A, Slot Section, General View	E	Overcast
	377	Trench 1, Quad. A, Slot Section, North Facing Section from E-W	N	Overcast
	378	Trench 1, Quad. A, Slot Section, North Facing Section from E-W	N	Overcast
	379	Trench 1, Quad. A, Slot Section, N Facing Section from E-W	N	Overcast
	380	Trench 1, Quad. A, Detail of Possible Hearth Stone in Slot Section	W	Overcast
	381	Trench 2, Quad. D, NW Slot, General View	W	Bright
	382	Trench 2, Quad. D, NW Slot, N Facing Section Through Wall from W-E	N	Bright
	383	Trench 2, Quad. D, NW Slot, North Facing Section Through Wall from W-E	N	Bright
	384	Trench 2, Quad. D, NW Slot, N Facing Section Through Wall from W-E	N	Bright
	385	Trench 2, Quad. D, NW Slot, S Facing Section Through Wall from W-E	S	Bright
	386	Trench 2, Quad. D, NW Slot, S Facing Section Through Wall from W-E	S	Bright

Colour Slide (SLR) Film 5 and Digital

	387	Trench 2, Quad. B, Slot, E Facing Section from S-N	E	Overcast
	388	Trench 2, Quad. B, Slot, E Facing Section from S-N	E	Overcast
	389	Trench 2, Quad. B, Slot, E Facing Section from S-N	E	Overcast
	390	Trench 2, Quad. B, Slot, General View	N	Overcast
	391	Trench 2, Quad. B, Slot, General View Final	N	Overcast
	392	Trench 2, Quad. B, Slot, General View Final	SE	Overcast
	393-394	Trench 1, Quad. B, N-S Slot, Mid-Ex Showing Burnt Area	N	Overcast
	395-396	Trench 1, Quad. B, N-S Slot, Mid-Ex Showing Burnt Area	E	Overcast
	397-398	Trench 1, Quad. C, Slot Section, General View	E	Overcast
	399-406	Trench 1, Quad. C, Slot Section, S Facing Section from E-W	S	Overcast
	407-412	Trench 1, Quad. D, Slot Section, W Facing Section from N-S	W	Overcast
	413-417	Trench 1, Quad. A, Slot Section, S Facing Section from W-E	S	Overcast
	418-423	Trench 1, Quad. C, Slot Section, W Facing Section from W-E	N	Overcast
	424-425	Trench 2, Quad. D, Slot Section, (N-S), General View	S	Overcast
	426-435	Trench 2, Quad. D, Slot Section, (N-S), W Facing Section from S-N	W	Overcast
	436-437	Trench 2, Quad. D, Slot Section, (N-S), S Facing Section	S	Overcast

	438-445	Trench 2, Quad. D, Slot Section, (N-S), E Facing Section from N-S	E	Overcast
	446-447	Trench 2, Quad. D, Slot Section, (NW), W Facing Section	W	Overcast
	448-451	Trench 1, Quad. B, Paving. General View	NW	Overcast
	452-453	Trench 1, Quad. B, Paving. General View	SW	Overcast
	454-457	Trench 4, Wall	E, W	Overcast
	458-459	Trench 2, Quad. A	N	Overcast
	460-461	Trench 2, Quad. A	W	Overcast
	462-465	Trench 1, Quad. B, Paving c.106. Pre-removal	NE	Sunny
	466-467	Trench 2, Quad. D, Extension to S, Cleaned	S	Bright
	468-471	Trench 2, Quad. D, S Facing Section	S	Bright
	472-473	Trench 1, Quad. B, Cut c.125 with Stones c.104 Set Into It	W	Bright
	474	Trench 1, Quad. B, Cut c.125 Exc. and c.126 Sampled	S	Bright
	475	Unmonitored Machine Stripping to W of Site	E	Overcast
	476-477	Trench 1, Quad. A, Tin s.14 In-situ	N	Overcast
	478-484	Trench 3, Slot Excavated from E Edge	E	Bright
	485-490	Trench 1, Quad. B, E Facing Section	E	Sunny

Colour Slide (SLR) Film 6 and Digital

SLR	Digital	Description	From	Conditions
	491	Trench 2, Quad. C, Paving c.234 Within Structure Cleaned	WSW	Sunny
	492-495	Trench 2, Quad. C, Paving c.234 Within Structure Cleaned. Plan View	S	Sunny
	496-497	Trench 2, Quad. C, Elevation of Wall c.203 Showing Soil Between It and Paving c.234	W	Sun/ Shade
	498-499	Trench 3, Extension to S, c.303, c.304	W	Sun
	500-501	General Site Views	W	Sun
	502-503	Trench 2, Quad. D, Extension to S	S	Sun
	504-505	Trench 2, Quad. D, and Trench 3 Extensions to S	E	Sun
	506	Bridge Works and Access Road Beyond	W	Sun
	507-509	Trench 2, Quad. B, Post-Ex, N Facing Section	N	Bright
	510-511	Trench 2, Quad. B, Post-Ex, N Facing Section. Plan View	N	Bright
	512-513	Trench 1, Quad. D, Pit c.132, Pre-Ex	W	Overcast
	514-530	Trench 1, Working Shots Showing Machine Removal of Deposits	Various	Sun/ Overcast
	531-531a	Trench 2, Quad. C, Views of Burrow Under Paving c.234	NW	Sun/ Shade
	532-532a	Trench 2, Quad. C, Surface Deposit c.233 Under c.234, Pre-sample	SW	Sun/ Shade
	533-534a	Trench 2, Quad. A, Completed to Natural	WSW	Sun/ Shade
	534b	Trench 2, Quad. D, Trench 4, Working Shot	W	Sun
	535-542a	Sheepfold Site. General Views of Soil Dumping etc...	Various	Sun
	543-543a	General Views of the Site	W	Sun
	544	Site of Bridge on Trackway, 200m W of Site	E	Sun
	545-545a	General Views of Access Roads and Site	WNW	Sun

Colour Slide (SLR) Film 7 and Digital

SLR	Digital	Description	From	Conditions
	546-546a	Trench 1, Cleaned of Machine Debris	W	Sun
	547-547a	Trench 1, Cleaned of Machine Debris	E	Sun
	548-549	Trench 1, Quad. D, W Facing Baulk, Pit c.132	W	Sun

	550	Trench 4, Machine Trench, General View	SSE	Sun
	551-552	Trench 4, Machine Trench, S Facing Section	S, SSW	Sun
	553-554	Trench 4, Machine Trench, N Facing Section	N	Sun
	555	Trench 1, Quad. D, Pre-ex of Possible Stone Setting Over c.112 (flat stone)	SE	Sun
	556-557	Trench 1, Quad. D, Section of Possible Stone Setting Over c.112 (flat stone)	SE	Overcast
	557a	Trench 2, Quad. B, Profile Tin s.20 In-situ	E	Overcast
	558	Trench 3, Slot 2, Post-ex General View	N	Overcast
	559-560a	Trench 3, Slot 2, Post-ex, W Facing Section and Close-up of c.302 Over c.303	W, WSW	Overcast
	561-561a	Trench 3, Slot 2, Post-ex, E Facing Section, Wall c.302 Over Ditch c.313	E, ENE	Overcast
	562-562b	Trench 2, Quad. C, Stones at E End of Trench	SE, SW	Overcast
	563-568	Buildings at John Dipple's Well. Exclusion Fence Moved From 3m to 2m/1m From Site	Various	Sun
	569-570	Trench 2, Quad. B, Kubiena Tin s.27 In-situ	E	Sun
	571-577	Trench 2, Quad. C, S Facing Section	S	Sun
	578-579	Trench 1, Quad. D, Possible Features to SW of Hearth	WNW, N	Sun
	580	Trench 1, Quad. D, Possible Features to SW of Hearth	ENE	Sun
	581	Trench 1, View From Quad. C Into Quad. D, Showing Stone Alignment c.111 and Single Stone in Section Where These Stones Have Been Lost in The Quad. C Slot	E	Sun
	582-590	Adder Shots	Various	Sun

Colour Slide (SLR) Film 8 and Digital

SLR	Digital	Description	From	Conditions
	591-593	Trench 1, Quad. A, Tin Sample s.29 In-situ, Through Possible Clay Floor c.115	W	Sun
	594-597	Trench 3, Slot 1, W Facing Section, N-S	W	Sun
	598-599	Trench 3, Slot 2, Extension to S on W Facing Side	W	Sun
	600-601	Trench 3, Slot 2, Tin s.30 In-situ	W	Overcast
	602-604	Trench 1, Quad. D, Showing Possible Floor Material c.115 and c.139 Under Stones c.111	W	Overcast
	605-606	Trench 1, Quad. D, Section Post-Ex, Confirms c.115 is Under c.111, c.139 Probably Built-up Between Stones	W	Overcast
	607-608	Trench 3, Slot 3. 100mm Removed, More Stones Exposed	N	Sun
	609-610	Trench 1, Quad. B, Paving (incl. Pivot stone) Removed and Cleaned	SW	Sun
	611-612	Trench 1, Quad. B, Post-hole c.140 Pre-Ex	SW	Sun
	613-614	Trench 1, Quad. B, Post-hole c.140 Section, SW Facing	SW	Sun
	615-617	Machinery at Bridge to W of Site	W	Sun
	618-620	Trench 1, Quad. B, Post-hole c.140 Mid-Ex	SW	Sun
	621-622	Trench 1, Quad. B, Post-hole c.140 Post-Ex	SW	Sun
	623	Trench 1, Quad. B, Post-hole c.140 Post-Ex, Plan View	NW	Sun
	624-629	Trench 1, Quad. B, Post-hole c.142 Section, 0.1m NE of c.140	SW	Overcast
	630-648	Site Backfilling	Various	Sun

APPENDIX 3: Field Drawings Register

Drawing No	Scale	Section/Plan	Description
01	1:20	Plan	Trench 1, Quads A/D, Pre-Ex
02	1:20	Plan	Trench 2, Quads A/D, Pre-Ex. 2 of 2
03	1:20	Plan	Trench 2, Quad. B, Pre-Ex
04	1:20	Plan	Trench 2, Quad. B, Continued
05	1:20	Plan	Trench 1, Quads B/C
06	1:20	Plan	Trench 2, Quad. B, North Sondage, Mid-Ex
07	1:10	Section	Trench 2, Quad. B Sondage, East Facing Section, Post-Ex
08	1:10	Section	Trench 2, Quad. B Sondage, North Facing Section, Post-Ex
09	1:20	Plan	Trench 3, Pre-Ex, Showing c.302-305
10	1:20	Plan	Trench 2, Quad. D, Mid-Ex Overlay of Eastern Section
11	1:20	Plan	Trench 4, Pre-Ex
12	1:20	Plan	Trench 2, Quad. A, West Extension
13	1:10	Section	Trench 1, Quad. D, East Wall of Sondage
14	1:20	Plan	Trench 1, Quad. D, North End of Sondage
15	1:10	Section	Trench 1, Quad. A, North Facing Section
16	1:10	Section	Trench 2, Quad. D, Northwest Sondage
17	1:20	Plan	Trench 1, Quad. B, Mid-Ex Overlay of Paving and Doorway
18	1:10	Section	Trench 2, Quad. D, West Facing Section of Slot
19	1:10	Section	Trench 1, Quad. C, South Facing Section of Sondage
20	1:20	Plan	Trench 1, Quad. B, Mid-Ex of Paving in Sondage
21	1:10	Section	Trench 1, Quad. A, South Facing Section
22	1:20	Plan	Trench 1, Quad. B, East Facing Section of Sondage
23	1:20	Plan	Trench 2, Quad. C, Rough Stone Paving c.234
24	1:20	Plan	Trench 3, Southern Sondage, Post-Ex Overlay
25	1:20	Plan	Trench 1, Quads A/D, Post-Ex
26	1:20	Plan	Trench 1, c.112, Post-Ex Overlay
27	1:10	Section	Trench 3, Northern Section, West and East Facing Sections
28	1:20	Plan	Trench 1, Quad. C, Post-Ex
29	1:20	Plan	Trench 2, Quad. B, Post-Ex
30	1:20	Plan	Trench 1, Quads A/D, Post-Ex
31	1:20	Plan	Trench 2, Quad. D, Post-Ex
32	1:10	Section	Trench 1, Quad. D, Sondage, Post-Ex
33	1:10	Section	Trench 2, Quad. C, South Facing Section
34	1:20	Plan	Trench 2, Quad. B, Post-Ex
35	1:20	Plan	Trench 2, Quad. D, Post-Ex
36	1:10	Section	Trench 1, Quad. D, Amended West Facing Section (Dr..No:32)
37	1:20	Plan	Trench 2, Quad. C, Trench 4, Post-Ex
38	1:10	Section	Trench 3, South Edge Sondage, West Facing Section
39	1:10	Section	Trench 1, Quad. B, Post Hole c.140-1
40	1:20	Plan	Trench 1, Quad. B, Post Hole c.140-1
41	1:20	Plan	Trench 3, Southwest Sondage, Post-Ex Overlay
42	1:20	Plan	Trench 1, Quad. D, Sondage, Post-Ex
43	1:10	Section	Trench 1, Quad. B, Post Hole c.142, Section Cut into c.144, Within c.147
44	1:20	Plan	Trench 1, Quad. B, Showing Location of c.142 and Drawing No:43

APPENDIX 4: Samples Register

Sample No.	Context	Description	Volume
01	218	Soil and charcoal with heat affected material. Fill of 209.	500mL
02	218	Charcoal. Fill of 209 for C14.	100mL
03	210	Soil from wall foundation trench. Fill of 209	-
04	221	Charcoal fragment for dating of wall	0.05L
05	219	Charcoal fragment for C14	Lump
06	204	Bulk. Soil around paving 202, Below 201	12L
07	103	Soil above gravelly layer, inside wall 104	12L
08	107	Soil above stone alignment associated with wall 104	12L
09	108	Soil above floor level 109. Possible abandonment deposit. Lots of charcoal flecks.	36L
10	117	Dark brown stony silt with charcoal and burnt bone	1.5L
11	229	Bulk. Charcoal content.	14L
12	123	Bulk. Floor level abutting wall in Quad. B sondage	12L
13	126	Bulk. Fill of possible foundation trench c.125	12L
14	103, 108-9	Profile tin. Structure 1, Q1, north-facing	Tin
15	133	Bulk. Fill of pit. Mixed contexts. Charcoal and clay.	12L
16	133	Bulk. Fill of Pit. Mixed contexts. Charcoal and clay.	12L
17	133	Charcoal fragments for C14. Contaminated by 134-5?	200mL
18	208	Large amounts of charcoal above paving 234	500mL
19	235	Soil and charcoal from below paving 234	24L
20	208, 235	Profile tin, pollen etc	Tin
21	137	Stone, Fill of 112. Between 138 and 136	-
22	136	Charcoal. Fill of 112	-
23	136	Charcoal-rich soil Above 137. Fill of 112	200mL
24	138	Bag. Heat affected soil. Fill of 112	200mL
25	136	Bulk. Context above 137. Fill of 112	12L
26	223	Bulk	12L
27	235	Kubiena tin. Quad. B	Tin
28	235	Charcoal under paving 234.	200mL
29	109	Clay floor? Structure 1, Quad. A	Tin
30	314	Kubiena tin for pollen. Fill of 313	Tin
31	314	Bulk for environmental. Fill of 313	2L
32	141	Fill of post-hole 140	9L
33	143	Bulk for environmental. Fill of 142	10L
34	144	Bulk for environmental. Fill of 147	10L
35	144	Charcoal under paving c.106	Lumps

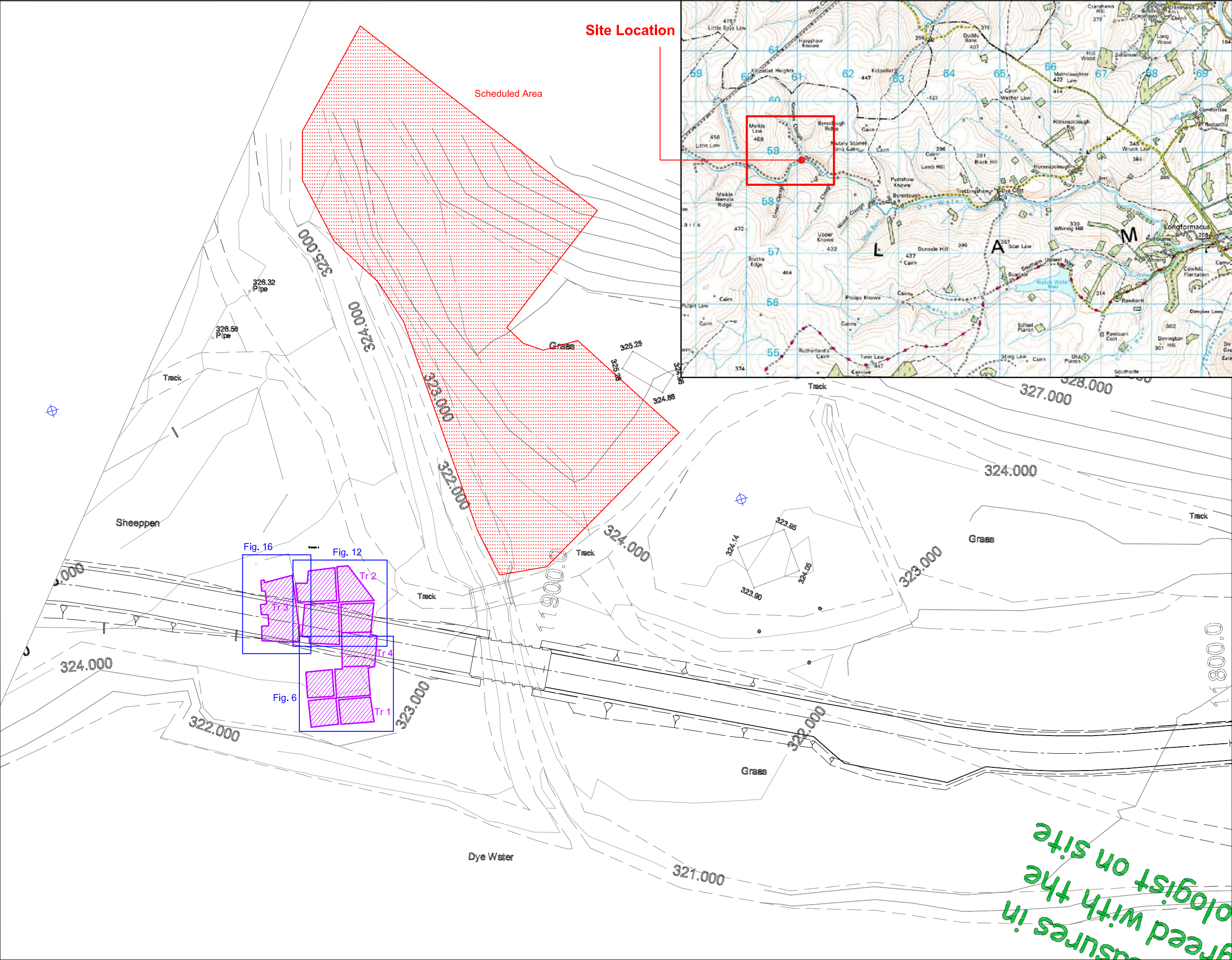
Appendix 5: Finds Quantification

Quadrant	Context	Find type	No.	Wt (g)	Notes	Spotdate
<i>Structure 1</i>						
	136	Bone	12	1	calcined animal bone	
	137	Stone	2	-	samples <21> of fire-cracked stone	
	U/S	Glass	1	2	half a pale blue glass bead	Sax?
A	108	Fe	3	12	unident	
A	108	Lithic	4	3	flint/chert	
A	109	Fired clay	5	446	loomweight fragments, small holes	7th-9th c.
A	109	Stone	1	21	spindle whorl: flat plano-convex, lathe-turned	ASax?
A	109	Stone	1	20	spindle whorl: plano-convex, lathe-turned with incised concentric rings, broken	7th-9th c.
A	130 (125?)	Stone	1	36	spindle whorl: plano-convex, lathe-turned with incised concentric rings	7th-9th c.
A	112 (near)	Lithic	1	2	flint	
A	U/S	Lithic	1	1	flint/chert	
B	101	Fe	1	11	mpo - wood	
B	101	Lithic	1	2	flint	
B	101	Lithic	2	5	quartz?	
B	106	Stone	1	-	large ?pivot stone	
B	108	Lithic	1	1	flint blade	
C	103	Lithic	1	1	?burnt flint	
C	103	Lithic	1	2	flint	
D	100	Glass	40	137	18 frags green bottle, 22 frags pale green or uncoloured vessels/bottles (incl wineglass?)	18-20th c.
D	102	Stone	1	32	sandstone pebble, poss worked - shallow depression on one side	?
D	103	Lithic	1	5	flint	
D	107	Lithic	1	11	orange flint	
D	107	Stone	1	10	spindle whorl: flat disc	
D	111	Lithic	1	1	flint	
<i>Structure 2</i>						
A	200	Fe	1	622	large horseshoe	19/20th c.
A	200	Glass	3	67	uncoloured bottle	19/20th c.
A	207	Fe	3	42	?nails	
A	210	Lithic	1	1	flint	
A	219	Lithic	1	1		
A	U/S	Fe	1	7	nail	modern
A	U/S	Glass	4	12	uncoloured bottle	19/20th c.
A	U/S	Lithic	1	1	flint blade	
A	U/S	Lithic	1	9	?	
B	200	Ae	1	7	shotgun cartridge cap	20th c
B	200	Fe	1	29	?nail	

Quadrant	Context	Find type	No.	Wt (g)	Notes	Spotdate
C	204 (202)	Lithic	2	3	honey-coloured flint blade & chip	
C	204 (202)	Pottery	1	20	medium sandy handmade body, heavily sooted	ASax
C	207	Lithic	1	1	tiny chip	
D	200	Fe	2	16	?nail & U-shaped staple	
D	200	Ae	1	5	shotgun cartridge cap	20th c
D	200	Lithic	1	1	?	
D	201	Fe	2	21	whittle tang knife	ASax/med
D	201	Lithic	1	3	honey-coloured flint	
D	202	Lithic	2	1	flint	
D	204 (202)	Fe	2	27	?nails	
D	204 (202)	Glass	3	11	uncoloured vessel	19/20th c.
D	204 (202)	Stone	1	6	spindle whorl: small plano-convex, lathe-turned with incised concentric rings	7th-9th c.
D	224	Bone	4	2	calcined animal bone	
D	U/S	Al?	1	43	sheet plate with nail holes	20th c
D	U/S	Fe	1	93	unidentified	
D	U/S	Bone	2	1	calcined animal bone	
<i>Other areas</i>						
Tr.3	300	Lithic	9	19	various, some poss natural	
Tr.3	301	Fe	20	273	mainly handmade nails, also frag barbed wire, 1-2 possible objects	pmed
Tr.3	301	Ae	1	4	shotgun cartridge end	19/20th c
Tr.3	301	Glass	44	392	7 green/brown bottle, 22 pale green bottles, 15 uncoloured bottles	19/20th c.
Tr.3	310	Slag	1	56	ferrous	
Tr.3	310	Lithic	1	7		
Tr.3	310	Stone	1	10	frag whetstone	
Tr.3	311/312	Lithic	2	4		
Tr.4	U/S	Slag	3	157	ferrous	

APPENDIX 6: Discovery & Excavation in Scotland Entry

LOCAL AUTHORITY:	Scottish Borders
PROJECT TITLE/SITE NAME:	Fallago Rig Windfarm. Excavation of Buildings and other features at the confluence of Dye Water/Kersons Cleugh, Longformacus
PROJECT CODE:	FALL
PARISH:	Longformacus
NAME OF CONTRIBUTOR:	Ian Suddaby
NAME OF ORGANISATION:	CFA Archaeology Ltd
TYPE(S) OF PROJECT:	Excavation
NMRS NO(S):	NT65NW 10
SITE/MONUMENT TYPE(S):	Settlement
SIGNIFICANT FINDS:	Lithics, Pottery, Spindle Whorls, Glass Bead, Whittle Tang Knife
NGR	NT 6111 5885
START DATE (this season)	March 2011
END DATE (this season)	May 2011
PREVIOUS WORK (incl. DES ref.)	None
MAIN (NARRATIVE) DESCRIPTION: (May include information from other fields)	An archaeological excavation was carried out on the access road leading to Fallago Rig Windfarm in the upper River Dye valley at the confluence with Kersons Cleugh. Two well-defined small buildings were investigated and a third trench examined what may have been the remains of a third. The first structure measured 5.6m by 3.1m internally. Most of the internal area was of beaten earth but that closest to the entrance and the NE facing entrance passage itself were paved. The wall was poorly defined but consisted of an earth bank with a stone capping. The second structure measured 6m by 3.6m internally. The SE portion of the internal area was paved but there was no clear entrance. The wall was of drystone construction with a deposit of orange silt banked against the external face. The third trench contained at least three walls and a ditch but they did not represent a third building. Finds included loomweights, spindle whorls, a glass bead and a sherd of pottery which suggest a 7th–9th-century date for the settlement. An assemblage of lithics may indicate an earlier presence on the site.
PROPOSED FUTURE WORK:	Post-excavation analysis
CAPTION(S) FOR ILLUSTRS:	N/A
SPONSOR OR FUNDING BODY:	Wind Prospect Ltd
ADDRESS OF MAIN CONTRIBUTOR:	The Old Engine House, Eskmills Park, Musselburgh, EH21 7PQ
EMAIL ADDRESS:	cfa@cfa-archaeology.co.uk
ARCHIVE LOCATION (intended/deposited)	National Monuments Record of Scotland Scottish Borders Council Sites and Monuments Record



- Key:
- Scheduled Area
 - CFA Trenches

CFA ARCHAEOLOGY LTD
The Old Engine House
Eskmills Park
Musselburgh
East Lothian, EH21 7PQ
t: 0131 273 4380
f: 0131 273 4381
e: info@cfa-archaeology.co.uk
w: www.cfa-archaeology.co.uk

Fig. No:	1	Revision:	A
Title:	Plan of access road around the Kersons Cleugh bridge with a trench layout showing the Scheduled area		
Project:	Fallago Rig Windfarm		
Client:	Wind Prospect Ltd		
Scale:	1:500 A3		
Drawn by:	LW	Checked:	LW
Report No:	1877		



Fig. 2 - Extract from the 1st Edition OS map (Berwickshire, Sheet 8, 1862)



Key:		Fig. No:	2	Revision:	A	Client:	Wind Prospect Ltd	 <div>CFA ARCHAEOLOGY LTD The Old Engine House Eskmills Park Musselburgh East Lothian, EH21 7PQ t: 0131 273 4380 f: 0131 273 4381 e: info@cfa-archaeology.co.uk w: www.cfa-archaeology.co.uk</div>	
<div><div></div></div> Site Area		Title:							
Project:									
Scale:	Fallago Rig Windfarm						Drawn by: SW	Checked: LW	Report No: 1877




Fig. 3 - General view of the site on the far side of Kerson's Cleugh from the NE. The Scheduled area (No. 4549) is in the foreground



Fig. 4 - Pre-excavation photo from the east of the structure in Trench 1



Fig. 5 - Trench 1, view of the post-holes (140, 142) under the paving (106) from the south

Key:	Fig. No:	3-5	Revision:	A	Client:	Wind Prospect Ltd	 <div>CFA ARCHAEOLOGY LTD The Old Engine House Eskmills Park Musselburgh East Lothian, EH21 7PQ t: 0131 273 4380 f: 0131 273 4381 e: info@cfa-archaeology.co.uk w: www.cfa-archaeology.co.uk</div>					
	Title:											
	Project:											
Scale:	Fallago Rig Windfarm						Drawn by:	SW	Checked:	LW	Report No:	1877



Key:



Fig. 6 - Trench 1 Excavation Plan

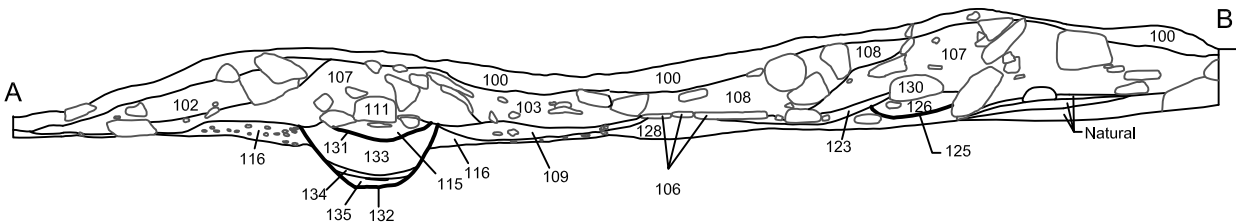


Fig. 7 - Trench 1 Section



CFA ARCHAEOLOGY LTD
The Old Engine House
Eskmills Park
Musselburgh
East Lothian, EH21 7PQ
t: 0131 273 4380
f: 0131 273 4381
e: info@cfa-archaeology.co.uk
w: www.cfa-archaeology.co.uk

Fig. No:	6-7	Revision:	A
----------	-----	-----------	---

Title:
Trench 1 Excavation plan (& section) showing the underlying pit and possible post holes

Project:
Fallago Rig Windfarm

Client:
Wind Prospect Ltd

Scale: 1:50 A3



Drawn by:	Checked:	Report No:
LW	LW	1877



Fig. 8 - Trench 1, the perimeter stone alignment 130 in Quads A & D after machine removal of overburden



Fig. 9 - Trench 1, the possible hearth stone (137) in the foreground with the perimeter stone alignment (130) beyond



Fig. 10 - Trench 1, view of the north-east facing entrance passage paving 106/118



Fig. 11 - Trench 1 with the turf removed

Key:	Fig. No: 8-11	Revision: A	Client: Wind Prospect Ltd
Scale:	Title:	Project: Fallago Rig Windfarm	

CFA ARCHAEOLOGY LTD	CFA ARCHAEOLOGY LTD The Old Engine House Eskmills Park Musselburgh East Lothian, EH21 7PQ t: 0131 273 4380 f: 0131 273 4381 e: info@cfa-archaeology.co.uk w: www.cfa-archaeology.co.uk		
	Drawn by: SW	Checked: LW	Report No: 1877



Fig. 12 - Trench 2 Excavation Plan

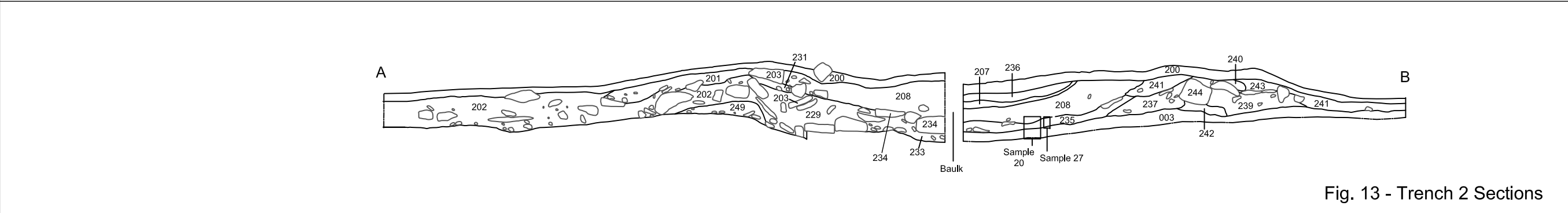


Fig. 13 - Trench 2 Sections



Key:

CFA ARCHAEOLOGY LTD
The Old Engine House
Eskmills Park
Musselburgh
East Lothian, EH21 7PD
t: 0131 273 4380
f: 0131 273 4381
e: info@cfa-archaeology.co.uk
w: www.cfa-archaeology.co.uk


Fig. No:	12-13	Revision:	A
Title:	Trench 2 Excavation plan		
Project:	Fallago Rig Windfarm		
Client:	Wind Prospect Ltd		
Scale:	1:50 A3		
Drawn by:	LW	Checked:	LW
Report No:	1877		

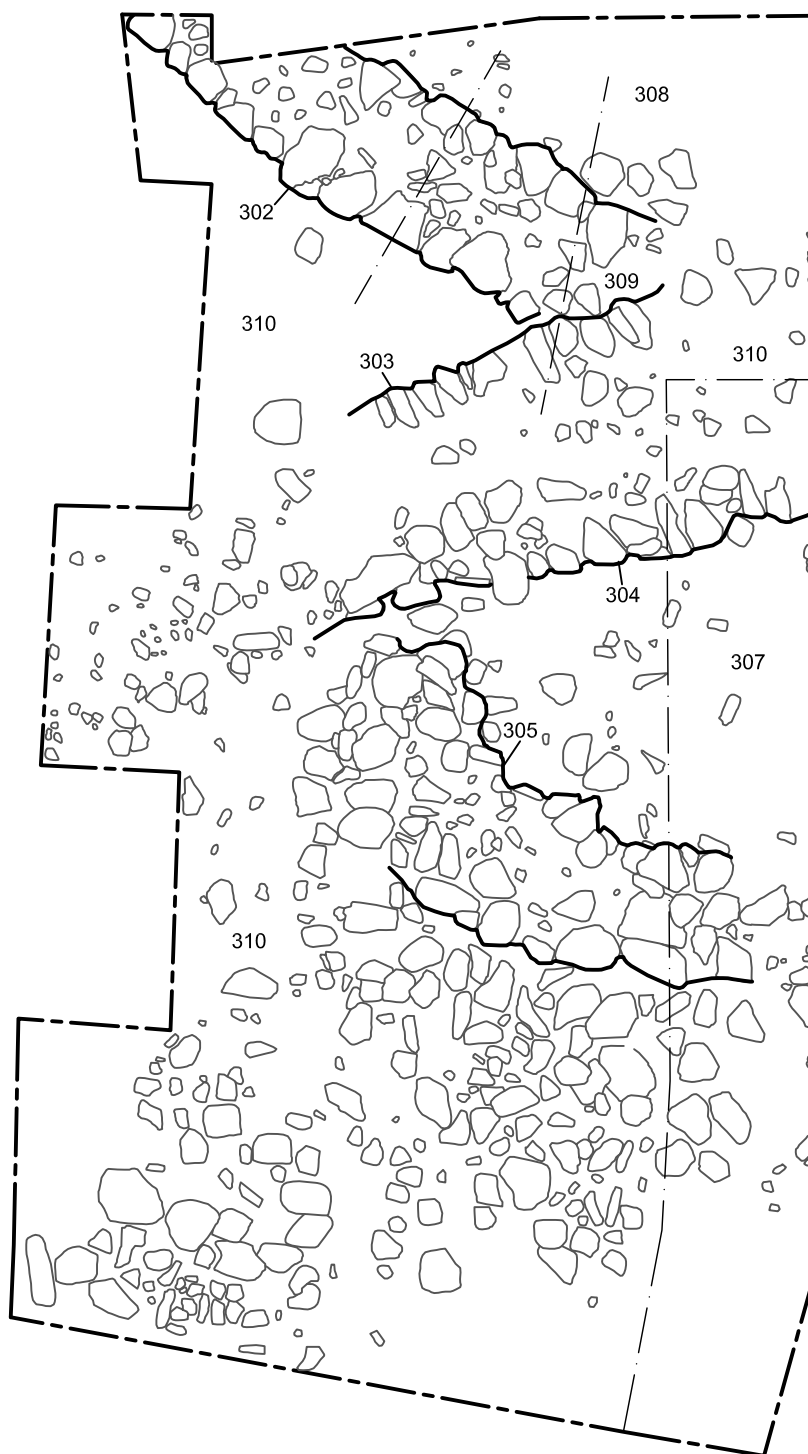


Fig. 14 - Pre-excavation photo from the west of the structure in Trench 2



Fig. 15 - Trench 2, general view from the west

Key:	Fig. No:	14-15	Revision:	A	Client:	Wind Prospect Ltd	 <div>CFA ARCHAEOLOGY LTD The Old Engine House Eskmills Park Musselburgh East Lothian, EH21 7PQ t: 0131 273 4380 f: 0131 273 4381 e: info@cfa-archaeology.co.uk w: www.cfa-archaeology.co.uk</div>				
	Title:										
	Project:										
Scale:	Fallago Rig Windfarm					Drawn by:	SW	Checked:	LW	Report No:	1877



Key:

Fig No: 16

Revision: 0

Client: Wind Prospect Ltd

Title:

Trench 3 Excavation plan

Project:

Fallago Rig Windfarm

Scale:
1:50 A4



CFA ARCHAEOLOGY LTD
The Old Engine House
Eskmills Park
Musselburgh
East Lothian, EH21 7PQ
t: 0131 273 4380
f: 0131 273 4381
e: info@cfa-archaeology.co.uk
w: www.cfa-archaeology.co.uk

Drawn by: LW

Checked: LW


Report No: 1877



Fig. 17 - Trench 3 from the north



Fig. 18 - Trench 4 from the west. The fragmentary wall 401 is at the top left

Key:	Fig. No:	17-18	Revision:	A	Client:	Wind Prospect Ltd	 <div>CFA ARCHAEOLOGY LTD The Old Engine House Eskmills Park Musselburgh East Lothian, EH21 7PQ t: 0131 273 4380 f: 0131 273 4381 e: info@cfa-archaeology.co.uk w: www.cfa-archaeology.co.uk</div>					
	Title:											
	Project:											
Scale:	Fallago Rig Windfarm						Drawn by:	SW	Checked:	LW	Report No:	1877