

CFA Archaeology Ltd

archaeological consultants

Advice on Archaeology & Planning

Environmental Impact Assessment

Interpretation, Design & Display

Finds/ Environmental Analysis

Field Evaluation & Excavation

Historic Building Recording


Site & Landscape Survey


Geophysical Survey

**Land at Larkhall Academy, Larkhall,
South Lanarkshire**

Archaeological Evaluation

Data Structure Report No. 1980

 0131 273 4380

 0131 273 4381

 info@cfa-archaeology.co.uk

 www.cfa-archaeology.co.uk

CFA ARCHAEOLOGY LTD

The Old Engine House
Eskmills Business Park
Musselburgh
East Lothian
EH21 7PQ

Tel: 0131 273 4380
Fax: 0131 273 4381
email: info@cfa-archaeology.co.uk
web: www.cfa-archaeology.co.uk

Author	Stuart Mitchell MA AIfA
Illustrator	Leeanne Whitelaw MA MIfA
Editor	Bruce Glendinning BSc PG Dip MIfA
Commissioned by	RPS Ltd on behalf of Muse Developments Ltd
Date issued	November 2011
Version	0
OASIS Reference	cfaarcha1-114676
Planning Application No	09/00971/P
Grid Ref	NS 7570 5050

This document has been prepared in accordance with CFA Archaeology Ltd standard operating procedures.

**Land at Larkhall Academy, Larkhall,
South Lanarkshire**

Archaeological Evaluation

Data Structure Report No. 1980

CONTENTS

1.	Introduction	4
2.	Methods	5
3.	Archaeological Results	6
4.	Summary & Conclusion	11
5.	References	12

APPENDICES

1.	Trial Trench Register	13
2.	Context Register	15
3.	Digital Photograph Register	16
4.	B/W Photograph Register	19
5.	Drawings Register	20
5.	Samples Register	21
6.	Finds quantification	21

ILLUSTRATIONS (bound at rear)

Fig. 1	Location map and trench plan
Fig. 2	Plan of features within Trench 17
Fig. 3	Sections of features within Trench 17
Fig. 4	Plan of features within Trench 61
Fig. 5	Sections of features within Trench 61
Fig. 6	Plan of sandstone surfaces 062,063 & 064
Fig. 7	Pit 023 with pottery <i>in situ</i>
Fig. 8	Pit 032 in section
Fig. 9	Ditch 034 in section

Fig. 10 Hearth 036 in plan

Fig. 11 Pit 049 in section

Fig. 12 Pit 053 in section

Fig. 13 General view of sandstone surfaces 062,063 & 064

1.

INTRODUCTION

1.1 General

This report presents the results of an Archaeological Evaluation undertaken by CFA Archaeology Ltd (CFA) on land near Larkhall Academy, Larkhall, South Lanarkshire. (NGR: NS 7570 5050; Fig. 1) during November 2011. The work was commissioned by RPS Ltd on behalf of Muse Developments Ltd.

The work was carried out in advance of an ASDA supermarket development. A project design for the evaluation, based on a desk based assessment by RPS Ltd (Turgel 2008), was produced by RPS and approved by the West of Scotland Archaeology Service (WoSAS).

1.2 Background

The site was located immediately to the north of Larkhall Academy and occupied undulating ground around a watercourse. On the north side of the site much of the ground was sloping and under thick woodland and was marshy. The forest was felled but the marshy ground restricted access. Areas around the main watercourse running roughly east to west were also marshy. More level ground existed on the south side of the watercourse: part of this side of the site had formerly been occupied by a plant nursery. A dismantled former railway line and embankment bounded the south edge of the site.

The proposed development area lies within 50m of a previously excavated Neolithic settlement which comprised pits, gullies and postholes, and contained evidence for activity or occupation up to the Iron Age. A Roman Catholic chapel is reported to have been present in the general area until 1724. Additionally, a wooden coffin with human remains was discovered close to the putative location of the chapel in 1893.

1.3 Objectives

The project's aims and objectives were:

- To determine the presence or absence of archaeological remains within those parts of the development area where such remains may be affected by the development and, if such remains are present, to determine their nature, extent, quality and preservation, and to enable an assessment of their relative importance in a local, regional, national or international context.

2. METHODS

2.1 General

CFA follows the Institute for Archaeologists' Standards and Guidance and Code of Conduct.

2.2 Trial Trenching

Trial trenches totalling 3770m² or c.6.6% of the undeveloped part of the development area were excavated (Fig. 1). Trial trenching locations were significantly restricted by the presence of marked and unmarked live services, steep slopes and waterlogged areas.

Trench excavation was undertaken by a JCB 3CX mechanical excavator fitted with a smooth bladed ditching bucket and monitored by an archaeologist down to natural subsoil. All excavation of archaeological features and deposits was undertaken using hand tools.

All excavation and on-site recording was carried out according to standard CFA procedures, principally by drawing, by photography and by completing standard CFA record forms. The positions of trenches were recorded using industry standard electronic surveying equipment.

3. ARCHAEOLOGICAL RESULTS

3.1 General

Eighty-one trial trenches totalling 3770m² or c.6.6% of the undeveloped part of the development area were excavated (Fig. 1).

Topsoil (**001**) varied from 0.2-0.4m deep across the site but was mainly 0.3-0.35m, with deeper topsoil being encountered closer to the watercourse. Subsoil (**002**) was present in most trenches and was a clayey silt. Natural (**000**) was variable, comprising stiff pink-red boulder clay across much of the site, with coarse reddish sand present on the level plateau on the south side of the site.

Only those trial trenches containing archaeological remains are described in the narrative below. Descriptions of all trial trenches are contained in Appendix 1. Numbers in parentheses in the text below are context numbers, a full list of which is contained in Appendix 2.

3.2 Trench Descriptions

Trenches 4 & 5 (Figs 6 & 13)

Trenches 4 and 5 were located on gently sloping ground to the south of the main watercourse and roughly central within the site boundary. The ground was lower lying than that to the east and is situated above a short steep slope leading down to the watercourse.

Within this trench, three areas of sandstone surface (**062, 063 & 064**) were identified. It is not known if these represent three separate features or one discontinuous one. The surfaces were constructed from rough, flattish sandstone slabs and boulders set either on a discontinuous surface of dark grey ash- and coal-rich clayey soil (**061**) up to 0.2m thick or directly on the natural subsoil surface (**000**).

Surface **062** measured c.5m by 3m and had been extensively disturbed. Surface **063** measured 5.5m by 5.5m and had at least one reasonably well-defined corner to the south-east. Surface **064** measured c.4.5m by 5m and appeared to be significantly disturbed.

It is unclear what these surfaces represent although their location closely coincides with that of a trackway depicted on the 1897 edition 1:2500 Ordnance Survey map, and it may be that they are a remnant of this track. Their founding in part on the ashy deposit (**061**) also suggests that they are not of any significant antiquity.

Trenches 10, 11 & 12 (Fig. 1)

A series of roughly parallel linear features, broadly aligned north to south, were identified in Trenches 10, 11 and 12, which were located on a gentle slope to the west of the level plateau area on the south side of the main watercourse.

The features were fairly vestigial and were cut into natural subsoil (000), which was firm sand with areas of sandy clay. A clay drain running parallel to these features was identified in Trenches 11, 12 and 20. It was possible to link up the linear features between trenches and they are described in the table below:

Trench No.	Feature type	Cut	Fills
10,11,12,	Linear feature	Cut (009) Aligned north to south. 0.45m wide by 0.12m deep. Sloping sides and slightly concave base.	Fill (010) Dark grey silty sand.
10,11,12,	Linear feature	Cut (011) Aligned north to south. 0.50m wide by 0.12m deep. Sloping sides and slightly concave base.	Fill (012) Dark grey silty sand.
10,11,12,	Linear feature	Cut (013) Aligned north to south. 0.54m wide by 0.07m deep. Sloping sides and slightly concave base.	Fill (014) Dark grey silty sand.
10,11,12,	Linear feature	Cut (015) Aligned north to south. 0.35m wide by 0.12m deep. Sloping sides and slightly concave base.	Fill (016) Dark grey silty sand.
10	Linear feature	Cut (017) Aligned north to south. 0.40m wide by 0.08m deep. Sloping sides and slightly concave base.	Fill (018) Dark grey silty sand.
10,11	Linear feature	Cut (019) Aligned north to south. 0.45m wide by 0.12m deep. Sloping sides and slightly concave base.	Fill (020) Dark grey silty sand.

It is probable that these features are the vestigial remains of cultivation furrows. From map and early aerial photographic evidence the site appears to have been agricultural fields divided by approximately north to south field boundaries.

Trenches 15, 63 & 64 (Fig. 1)

A stone-built box drain (008 & 052) aligned approximately north to south was exposed in Trenches 15, 63 and 64. The drain crosses the slope immediately to the east of the plateau on the south side of the main watercourse. The alignment, size and construction type suggests that it was the same feature in all three trenches. This is most likely to be agricultural in origin although it could have been drainage associated with the adjacent railway embankment.

Trenches 17, 61 & 75 (Fig. 1, 2, 3, 5, 7 & 10)

A number of negative features of known and possible archaeological significance were identified in Trenches 17, 61 and 75. These trenches were placed on the flat plateau located on the south side of the watercourse, bounded on the north by the break of slope before the ground surface sloped steeply down to the main water course, and bounded on the south by the dismantled railway.

Natural (000) was free draining coarse sand. The visible horizons of all features with the natural subsoil were clear, although the entire area had been subject to extensive burrowing by animals. The features were sealed by sandy silt subsoil (002).

The features are described in the table below. Only two of the features identified within the trenches contained any artefactual evidence and, although all were quite vestigial, they appeared anthropogenic in origin.

Trench No.	Feature type	Cut	Fills
17	Pit	Cut (023) (Figs 2, 3 & 7). Circular in plan, 0.5m in diameter by 0.07m deep. Shallow sides and a flattish base.	Primary fill (025) was mid-brown sandy silt and contained no finds. The secondary fill (024) comprised dark grey to black silt and contained frequent charcoal. Neolithic Pottery including rimsherds amounting to c.50 sherds was recovered from this secondary fill.
17	Pit	Cut (026) (Figs 2 & 3). Circular in plan, 0.5m in diameter by 0.1m deep. Steeply sloping sides and a flattish base.	(027) Dark brown silt. Approximately 4 Neolithic pottery sherds were recovered from this fill.
17	Pit	Cut (028) (Figs 2 & 3). Sub-oval in plan, 0.5m by 0.4m by 0.08m deep with sloping sides and a flattish/concave base.	(029) mid-brown sandy silt.
17	Pit	Cut (030) (Figs 2 & 3). Oval in plan, 0.5m by 0.35m by 0.1m deep with steep sides and a concave base.	(031) mid-brown sandy silt.
61	Hearth?	Cut (036) (Figs 4, 5 & 10). Circular in plan, 0.6m in diameter by 0.23m deep. Steeply sloping sides which merged to a concave base. The natural sand around the pit was friable and in places deep red, indicating burning.	The pit was lined with thin flat sandstone slabs (038) forming a well defined bowl. The upper edges of the pit contained thick deposits of dense grey clay (039) which may have been subjected to heat. The main void of the pit and all voids within the stones were filled with dark silt (040) . Red sand (037) , which is likely to have been burnt, was present within the margins of the pit cut. No finds.
61	Pit	Cut (041) (Figs 4 & 5). Circular in plan, 0.4m in diameter by 0.2m deep. Sloping sides which merged to a concave base.	(042) Mid-grey sandy silt.
61	Pit	Cut (043) (Figs 4 & 5). Circular in plan, 0.5m by 0.05m deep. Steeply sloping sides and a flat base.	(044) Mid-grey sandy silt.
61	Curvilinear ditch	Cut (045) (Figs 4 & 5). Aligned north to south and measured 0.45m wide. It extended from the north edge of the trench for 2m. Not identified in any other nearby trenches. The cut was 0.1m deep and had shallow sloping sides.	(046) Mid-grey sandy silt.
75	Pit	Cut (049) (Fig. 11). 1.6m in diameter and 0.2m in depth. Shallow sides merging to a slightly concave base forming a shallow bowl.	(050) Dark grey silt which contained infrequent fragments of charcoal.

Trenches 32, 37, 38 and 39 (Fig. 1)

The south-west section of the site was formerly occupied by a plant nursery. The area was mainly flat or gently sloping and bounded by a steep slope leading down to the watercourse.

An east to west alignment of hardcore (006) was revealed in Trenches 31 and 32, set on top of the natural clay (000). The remains of a timber border were present suggesting that this feature was the remains of a footpath for the nursery.

Evidence of what was thought to be activity relating to the operation of the plant nursery was identified in Trenches 37, 38 and 39. These trenches were subsequently extended to confirm this. A series of circular pits and parallel linear ditches were exposed. The pits were circular with steep-sided cuts and flat bases. The ditches also had steep sides with flat bases. The fills comprised loosely compacted grey silt. A fragment of blue nylon rope was discovered in one of the pit fills and a ring-pull from a drink can was discovered within one of the ditch fills. The layout and character and apparent recent date of the features indicated that they were the remains of features associated with the former plant nursery that occupied this location.

An earlier, larger linear ditch was identified (059) crossing Trenches 37 and 38. This was cut by the nursery ditches. It measured 0.9m wide and 0.25m deep. It had sloping sides and a flattish concave base, and was filled with very loose and stony silt (060). While this ditch is cut by the plant nursery features, its loose fill suggests a recent date and likely association with the plant nursery.

Trench 51 (Fig. 1)

A single isolated pit (032) (Fig. 8) was identified in Trench 51 on the edge of the plateau on the north side of the evaluation area. It measured 0.36m in diameter and was 0.15m deep. It had steeply sloping sides merging to a concave base. The fill (033) comprised moderately compacted brown sandy silt. No finds were discovered.

Trenches 56 & 58 (Fig. 1)

A linear ditch feature (034) was identified in Trenches 56 and 58. It was aligned north to south and was 0.7m wide by 0.20m deep with steeply sloping sides and a flattish concave base. The fill (035) was mid-grey sandy silt. No finds were discovered. It is probable that this is agricultural in nature and associated with the north to south orientated field system that once covered this area.

Trench 62 (Fig. 1)

A north to south aligned ditch (047) was identified in Trench 62. It was 0.6m wide by 0.27m deep and had steeply sloping sides and flattish base and was filled with a mid-grey clayey silt (048). Its shared alignment with the other probable agricultural features and drains suggests it is of a similar nature.

Trench 81 (Fig. 1)

A large but shallow circular pit (**053**) (Fig. 12) was identified in Trench 81, close to the edge of the level ground where the ground falls away to the main watercourse.

The pit measured 4m in diameter and was up to 0.45m deep. The sides were irregularly sloping and the base was flat. The fill (**054**) comprised very loosely compacted silt which contained frequent medium-sized stones and three roughly dressed sandstone rubble blocks. No mortar or other building materials were adhered to any of the stones and no such materials were found elsewhere in the pit. No finds were discovered within the fill. The loose nature of the fill suggests that the feature was not of any antiquity.

3.7 Finds, by Sue Anderson

Pottery was the only find type collected during the fieldwork, and was recovered from two contexts. A full list is included in Appendix 7.

Two pit fills, **024** and **027**, contained sherds of handmade pottery. Fifty-four sherds (331g) were collected from **024** and four sherds (45g) came from **027**. Both groups include rim sherds of Early to Mid Neolithic carinated bowls (M. Johnson, pers comm).

4. SUMMARY & CONCLUSION

A programme of trial trenching was carried out on land at Larkhall Academy, Larkhall, South Lanarkshire. Trial trenches totalling 3770m² or c.6.6% of the undeveloped part of the development area were excavated. This was slightly less than the 8% sample that was requested but local ground conditions and obstructions prevented further trenching. It is considered that this programme of work has adequately evaluated the archaeologically sensitive part of the site and has achieved the aims and objectives set out.

A number of features were identified. These consist of:

- Three sandstone surfaces (**062,063 & 064**) laid on a discontinuous surface of ash-rich soil (**061**) or natural. Map evidence suggests that these might be part of a trackway depicted on the 1897 edition 1:2500 Ordnance Survey map.
- A series of linear ditches (**009,011,013,015,017 & 019**) aligned roughly north to south. These are thought to be the remains of cultivation furrows.
- A stone box drain (**007 & 051**). This is most likely to be agricultural in origin although it could have been drainage associated with the adjacent railway embankment.
- Linear ditches (**034 & 047**) which are most likely agricultural in nature and associated with the roughly north to south orientated field systems that once occupied the development area.
- The remains of a former plant nursery.
- A dispersed group of eight pits and one linear feature including a stone-lined pit/possible hearth (**036**) and two pits (**023 & 026**) which contained Neolithic pottery.
- An isolated large pit (**053**) filled with loose soil (**054**) containing a few roughly dressed sandstone rubble blocks.
- An isolated small circular pit (**032**).

It is considered that the only features that are of archaeological significance are those identified in Trenches 17, 61 and 75. At least two of the features appear to be mid to late Neolithic in date on the basis of the pottery they contained. They do not represent a dense spread of features as a number of trenches were excavated between them and around them and nothing else of significance was identified. They may represent a similar type of early prehistoric activity to that identified in the excavations conducted during the construction of the adjacent Larkhall Academy (Dutton & Atkinson 2006).

The project archive, comprising all CFA record sheets, maps and reports, will be deposited with the National Monuments Record of Scotland (NMRS) and copies of reports will be lodged with the South Lanarkshire Sites and Monuments Record.

A summary statement to be submitted for publication in *Discovery and Excavation in Scotland* will be sufficient to disseminate the results of this programme of works. The project will also be reported on through *OASIS Scotland*.

5. REFERENCES

Dutton, A & Atkinson, D 2006 *Larkhall Academy South Lanarkshire, Excavation Data Structure Report*. Headland Unpublished technical report.

Turgel, A 2008 *A Desk-Based Archaeological Assessment In Connection with the Proposed ASDA and MUSE developments at Larkhall, South Lanarkshire*. RPS Ltd.

APPENDIX 1: Trench Register

Trench No.	Dimensions (m)	Topsoil depth (m)	Subsoil depth (m)	Archaeological Contexts
1	20 x 1.5	0.3	0.2	
2	40 x 1.5	0.3	0.1	
3	35 x 1.5	0.3	0.1	
4	40 x 1.5	0.3	0.1	061 Ash rich soil deposit, 062/063/064 Sandstone slab built structures
5	40 x 1.5	0.3	0.1	061 Ash rich soil deposit, 062/063/064 Sandstone slab built structures
6	40 x 1.5	0.35	0.1	
7	35 x 1.5	0.35	0.3	
8	20 x 1.5	0.3	0.1	
9	15 x 1.5	0.3	0.1	
10	30 x 1.5	0.35	0.1	009/010, 011/012, 013/014, 015/016, 017/018, 019/020 Linear ditches, 021/022 Clay drain
11	35 x 1.5	0.35	0.1	009/010, 011/012, 013/014, 015/016, 019/020 Linear ditches, 021/022 Clay drain
12	40 x 1.5	0.35	0.1	009/010, 011/012, 013/014, 015/016 Linear ditches, 021/022 Clay drain
13	5 x 1.5	0.3	0.1	004/005 drain
14	40 x 1.5	0.4	0.1	
15	45 x 1.5	0.35	0.1	007/008 box drain
16	25 x 1.5	0.35	0.05	
17	20 x 1.5	0.35	0.05	023/204/025, 026/027, 028/029, 030/031. Small pits.
18	12 x 1.5	0.3	0.05	
19	30 x 1.5	0.35	0.1	
20	30 x 1.5	0.35	0.1	019/020 Clay drain
21	20 x 1.5	0.2	0.1	
22	20 x 1.5	0.2	0.2	
23	20 x 1.5	0.2	0.2	
24	20 x 1.5	0.3	0.2	
25	25 x 1.5	0.3	0.2	
26	25 x 1.5	0.3	0.2	
27	25 x 1.5	0.3	0.2	
28	25 x 1.5	0.3	0.2	
29	20 x 1.5	0.25	0.2	
30	25 x 1.5	0.3	0.2	
31	40 x 1.5	0.3	0.05	006 Hardcore surface/path
32	45 x 1.5	0.35	0.1	006 Hardcore surface/path
33	45 x 1.5	0.3	0.1	
34	30 x 1.5	0.3	0.2	
35	25 x 1.5	0.3	0.1	
36	25 x 1.5	0.3	0.1	
37	35 x 1.5	0.3	0.2	055/056 Tree cultivation bowls, 057/058 Cultivation ditches
38	25 x 1.5	0.35	0.05	055/056 Tree cultivation bowls, 057/058 Cultivation ditches
39	20 x 1.5	0.3	0.1	055/056 Tree cultivation bowls, 057/058 Cultivation ditches
40	35 x 1.5	0.35	0.3	
41	25 x 1.5	0.35	0.2	
42	20 x 1.5	0.4	0.4	
43	10 x 13	0.35	0.2	

Trench No.	Dimensions (m)	Topsoil depth (m)	Subsoil depth (m)	Archaeological Contexts
44	45 x 1.5	0.3	0.5	
45	45 x 1.5	0.3	0.4	
46	45 x 1.5	0.3	0.3	
47	40 x 1.5	0.3	0.1	
48	25 x 1.5	0.4	0.2	
49	10 x 1.5	0.3	0.2	
50	35 x 1.5	0.4	0.5	
51	25 x 1.5	0.35	0.2	032/033 Small pit
52	15 x 1.5	0.3	0.3	
53	15 x 1.5	0.5	0.2	
54	15 x 1.5	0.45		
55	20 x 1.5	0.4		
56	20 x 1.5	0.4		034/035 Linear ditch
57	20 x 1.5	0.35		
58	15 x 1.5	0.35		
59	25 x 1.5	0.25	0.35	
60	25 x 1.5	0.3	0.2	
61	25 x 1.5	0.3		036/037/038/039/040 Hearth pit, 041/042, 043/044 Small pits, 045/046 Shallow linear ditch
62	25 x 1.5	0.35	0.25	047/048 Linear ditch
63	25 x 1.5	0.35	0.2	051/052 box drain
64	20 x 1.5	0.3		
65	15 x 1.5	0.3		
66	20 x 1.5	0.3		051/052 box drain
67	20 x 1.5	0.4		
68	15 x 1.5	0.3	0.15	
69	15 x 1.5	0.3	0.15	
70	15 x 1.5	0.3	0.15	
71	15 x 1.5	0.3	0.1	
72	15 x 1.5	0.3	0.05	
73	20 x 1.5	0.3	0.05	
74	25 x 1.5	0.3	0.1	
75	45 x 1.5	0.3	0.2	049/050 Large shallow pit
76	45 x 1.5	0.35		
77	20 x 1.5	0.25		
78	20 x 1.5	0.2		
79	35 x 1.5	0.3		
80	15 x 1.5	0.2		
81	25 x 1.5	0.3	0.05	053/054 Large pit

APPENDIX 2: Context Register

Context	Trench	Description
000	All	Geological/Natural subsoil
001	All	Topsoil
002		Subsoil
003		Peat
004	13	Cut of drain
005	13	Fill of drain 004
006	31,32	Hardcore surface/path
007	15	Cut of box drain
008	15	Main build of box drain y
009	10,11,12	Cut of ditch
010	10,11,12	Fill of ditch 009
011	10,11,12	Cut of ditch
012	10,11,12	Fill of ditch 011
013	10,11,12	Cut of ditch
014	10,11,12	Fill of ditch 013
015	10,11,12	Cut of ditch
016	10,11,12	Fill of ditch 015
017	10	Cut of shallow linear ditch
018	10	Fill of 017
019	10,11	Cut of ditch
020	10,11	Fill of ditch 019
021	11,12,20	Cut of clay drain
022	11,12,20	Fill of clay drain including drain pipe
023	17	Cut of pit
024	17	Upper fill of 023
025	17	Primary fill of 023
026	17	Cut of pit
027	17	Fill of 026
028	17	Cut of small pit
029	17	Fill of 029
030	17	Cut of small pit
031	17	Fill of 030
032	51	Cut of small pit
033	51	Fill of 032
034	56	Cut of linear ditch
035	56	Fill of 034
036	61	Cut of possible hearth pit
037	61	Burnt clay lining of 034
038	61	Sandstone lining of pit 034
039	61	Burnt sand
040	61	Soil fill of 036
041	61	Cut of small pit
042	61	Fill of 041
043	61	Cut of small pit
044	61	Fill of 043
045	61	Cut of linear feature
046	61	Fill of 045
047	62	Cut of linear ditch
048	62	Fill of 047
049	75	Cut of large shallow pit
050	75	Fill of 049
051	63,64	Cut of box drain

Context	Trench	Description
052	63,64	Main build of box drain
053	81	Cut of large shallow pit
054	81	Fill of 081
055	37,38,39	Cut of tree bowls
056	37,38,39	Fill of tree bowls
057	37,38,39	Cut of cultivation ditches
058	37,38,39	Fill of 057
059	37,38	Cut of linear ditch
060	37,38	Fill of 060
061	4,5	Ash rich compact soil
062	4,5	Sandstone surface
063	4,5	Sandstone surface
064	4,5	Sandstone surface

APPENDIX 3: Digital Photograph Register

Photo No.	Description	From
1	Trench 2	W
2	Trench 1	N
3	Trench 3	
4	N/A	
5	Trench 7	S
6	Trench 6	N
7	Trench 13	E
8	Trench 10	W
9	Trench 8	W
10	Trench 19	SW
11	011 section	S
12	015 section	S
13	017 section	S
14	014 section/general view	W
15	014 section	S
16	Trench 14	W
17	Trench 12	W
18	Trench 20	W
19	Trench 11	W
20	Trench 42	N
21	Trench 41	W
22	N/A	
23	Trench 8	W
24	Trench 21	N
25	Trench 22	
26	Clay drain in Trench 12	E
27	Clay drain in Trench 12	S
28	026 pre-ex	E
29	026 pre-ex	S
30	023 pre-ex	S
31	023 during excavation	NW
32	023 during excavation	NW
33	023 section	SW
34	026 pre-ex	NW
35	026 pre-ex	NW
36	026 during excavation	N
37	026 section	W
38	026 section	W

Photo No.	Description	From
39	028 pre-ex	E
40	028 pre-ex	E
41	030 pre-ex	SW
42	030 pre-ex	SW
43	030 section	SW
44	030 section	SW
45	Trench 24	W
46	Trench 26	W
47	Trench 23	W
48	Trench 34	E
49	N/A	
50	Trench 33	E
51	Trench 31	S
52	Hardcore surface in Trench 31	S
53	Trench 27	S
54	N/A	
55	Pits 023, 026, 028 & 030 in Trench 17	N
56	Pits 023, 026, 028 & 030 in Trench 17	N
57	Pits 023, 026, 028 & 030 in Trench 17	N
58	028 section	SW
59	028 section	SW
60	Trench 17 extension	E
61	Trench 17 extension	E
62	Suspected feature/ bioturbation from tree bowl	
63	Suspected feature/ bioturbation from tree bowl	
64	Suspected feature/animal burrow in trench 17	
65	Suspected feature/animal burrow in trench 17	
66	Trench 44	E
67	Profile of peat in Trench 44	
68	N/A	
69	Trench 46	W
70	Trench 48	W
71	Trench 44	W
72	Trench 47	E
73	Trench 40	NE
74	Working shot, marshy area in north-west corner of site	E
75	N/A	
76	Buried electricity cable, Trench 48	E
77	Trench 49	S
78	Trench 50	W
79	N/A	
80	032 section	N
81	032 fully excavated	N
82	Trench 52	SW
83	Trench 53	N
84	Trench 54	NW
85	Trench 55	W
86	Trench 55 working shot	W
87	Trench 57	W
88	Trench 56	W
89	N/A	
90	General view of slope north of watercourse after tree clearance	E
91	034 section in Trench 58	N
92	034 section in Trench 56	N
93	Section of tree cultivation bowl in former nursery	N
94	Section of tree cultivation bowl in former nursery	W
95	Section of tree cultivation bowl in former nursery	SE

Photo No.	Description	From
96	Section of cultivation ditch within former nursery	N
97	Hearth 036 prior to cleaning	N
98	Hearth 036	E
99	Hearth 036	E
100	Hearth 036	E
101	Hearth 036	E
102	Hearth 036 with stones (038) in situ	E
103	Hearth 036 with stones (038) in situ	E
104	Hearth 036 section with stones (038) in situ	E
105	Hearth 036 section with stones (038) in situ	E
106	Hearth 036 section with stones (038) in situ	E
107	Hearth 036 section with stones (038) in situ	E
108	Trench 64	S
109	Trench 66	S
110	Hearth 036 section	E
111	Hearth 036 section	E
112	Trench 68	N
113	Trench 66	S
114	Trench 65	S
115	Trench 69	S
116	Trench 75	SW
117	Trench 70	S
118	Hearth 036 section	E
119	Hearth 036 backfilled by hand prior to trench backfilling	W
120	041 pre-ex	N
121	041 section	E
122	043 section	E
123	Trench 17 general view	E
124	Trench 17 general view	E
125	045 pre-ex	E
126	045 pre-ex	E
127	045 pre-ex	S
128	N/A	
129	045 section	S
130	045 section	S
131	047 section	S
132	047 section	S
133	045 section	S
134	049 pre-ex	W
135	Pre-ex of box drain in Trench 63	SW
136	Section of box drain (052)	S
137	Detail of box drain (052)	S
138	Quarter section of 049	N
139	Quarter section of 049	W
140	Trench 78	S
141	Trench 80	W
142	Trench 76	S
143	Trench 77	E
144	Trench 79	
145	Trench 81	NE
146	General view of pit 053	SW
147	General view of pit 053	SW
148	General view of pit 053	SW
149	General view of pit 053	SW
150	General view of pit 053	SW
151	General view of pit 053	SW
152	Quarter section of 053	N

Photo No.	Description	From
153	Quarter section of 053	E
154	General view of 053 sectioned	SW
155	Section of ditch 059	SW
156	Sandstone surface (063)	N
157	Sandstone surfaces (063 & 064)	N
158	Sandstone surfaces (062, 063 & 64)	E
159	Sandstone surfaces (062, 063 & 64)	E
160	Sandstone surfaces (063 & 064)	S
161	Sandstone surfaces (062 & 063)	N
162	Sandstone surfaces (062 & 063)	N
163	Sandstone surfaces (062 & 063)	N
164	Sandstone surfaces (062, 063 & 64)	W

APPENDIX 4: B/W Photograph Register

Photo No.	Description	From
Film 1		
1	Trench 3	N
2	Trench 4	N
3	Trench 13	E
4	011 section	S
5	015 section	S
6	017 section	S
7	Trench 12	W
8	Trench 11	W
9	Trench 8	W
10	Clay drain in Trench 12	E
11-13	023 section	SW
14-15	026 section	W
16-17	030 section	SW
18	Trench 23	W
19	Trench 31	S
20	Pits 023, 026, 028 & 030 in Trench 17	N
21-22	028 section	SW
23	Trench 48	W
24	Trench 49	S
25-26	032 section	N
27-28	032 fully excavated	N
29	Trench 53	N
30-31	034 section in Trench 58	N
32	034 section in Trench 56	N
33-34	Hearth 036 prior to cleaning	N
35-36	Hearth 036 with stones (038) in situ	E
Film 2		
1-3	Hearth 036 section with stones (038) in situ	E
4-6	Hearth 036 section	E
7-8	Trench 69	S
9-10	041 section	E
11-12	043 section	E
13014	045 section	S
15-16	045 section	S
17	Pre-ex of box drain in Trench 63	SW
18	Section of box drain (052)	S
19	Detail of box drain (052)	S
20	Trench 80	W

Photo No.	Description	From
21	Trench 77	E
22	General view of pit 053	SW
23-24	Quarter section of 053	N
25-26	Quarter section of 053	E
27	Sandstone surface (063)	N
28-29	Sandstone surfaces (062, 063 & 64)	E
30	Sandstone surfaces (063 & 064)	S

APPENDIX 5: Drawings Register

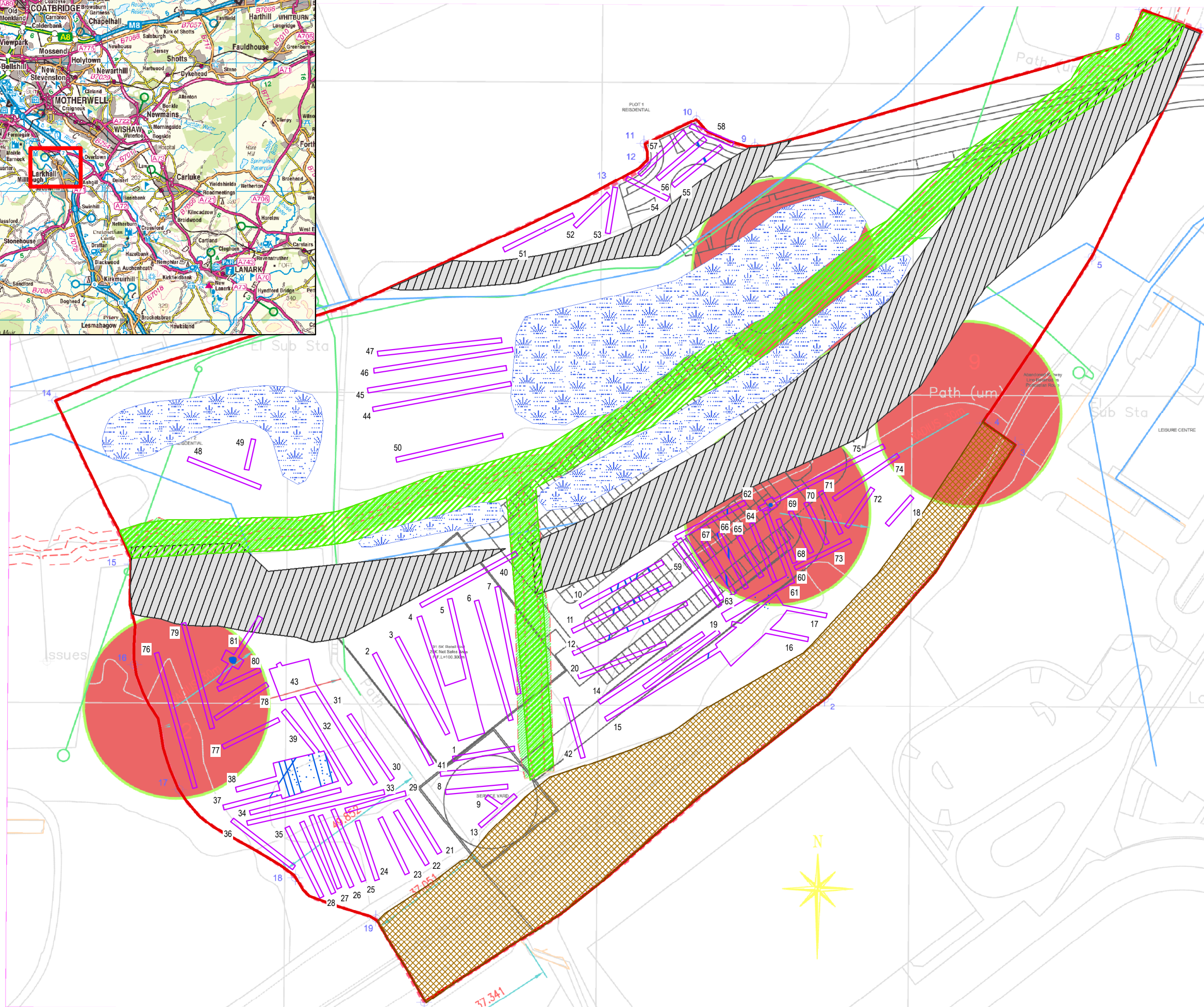
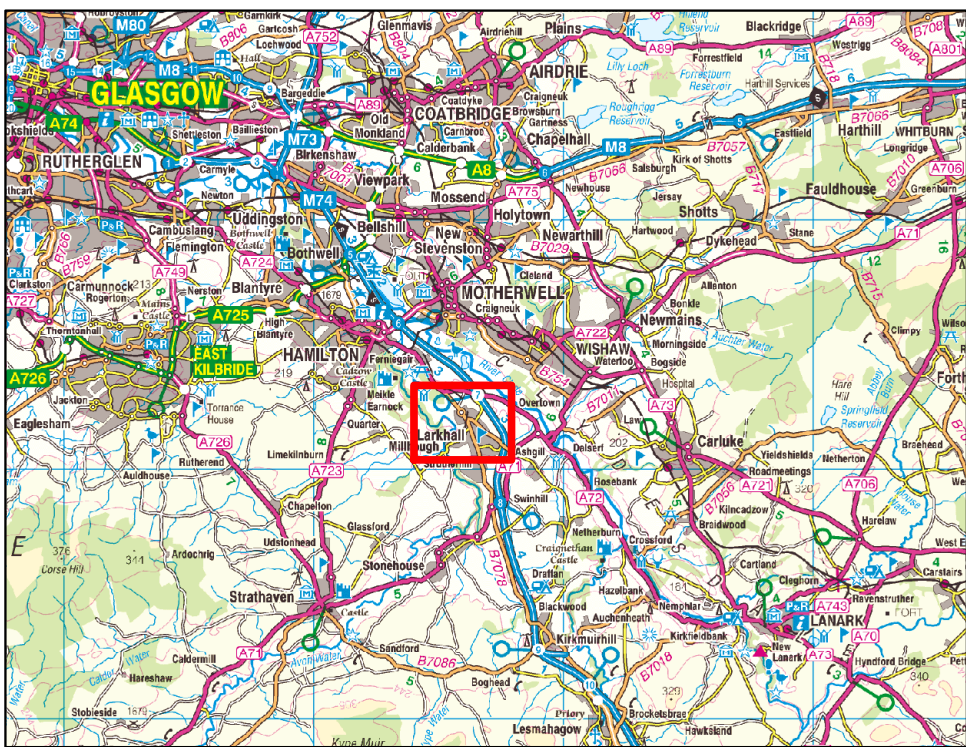
Drawing No.	Sheet No.	Description	Scale	Contexts
1	1	Plan	1:20	032/033
2	1	Section	1:10	032/033
3	1	Section	1:10	034/035
4	1	Plan	1:100	Tr.56
5	1	Plan	1:20	036-040
6	1	Plan	1:100	Tr.51
7	1	Section	1:10	036-040
8	1	Section	1:10	041/042
9	1	Section	1:10	049/050
10	1	Section	1:10	045/046
11	1	Section	1:10	043/044
12	1	Plan	1:100	Tr.61
13	2	Plan	1:20	023/026/028/030
14	2	Section	1:10	023/024/025
15	2	Section	1:10	026/027
16	2	Section	1:10	028/029
17	2	Section	1:10	030/031
18	3	Section	1:10	047/048
19	3	Plan	1:100	Tr.52
20	3	Plan	1:20	038-040
21	3	Plan	1:20	051/052
22	3	Plan	1:00	Tr.75
23	3	Section	1:10	053/054
24	3	Section	1:10	051/052
25	3	Section	1:10	053/054
26	3	Section	1:10	049/050
27	3	Section	1:10	049/050
28	4	Plan	1:20	062/063/064
29	5	Plan	1:50	Tr.81
30	5	Section	1:10	055/056
31	5	Section	1:10	055/056
32	5	Section	1:10	055/056
33	5	Section	1:10	055/056
34	5	Section	1:10	057/058

APPENDIX 6: Samples Register

Sample No.	Context	Fill of	Volume
1	050	049	7
2	024	023	10
3	027	026	10
4	029	028	6
5	033	032	1
6	048	047	4
7	044	043	2
8	042	041	2
9	040	039	1
10	037	036	1

APPENDIX 7: Finds quantification

Trench	Context	Find type	No.	Wt (g)	Notes	Spotdate
17	024	pot	54	331	includes several rimsherds, Carinated Bowl	ENeo
17	027	pot	4	45	includes one rimsherd, Carinated Bowl	ENeo



- Key:
- Site Boundary
 - Trench Location
 - Features
 - Waterlogged
 - Watercourse
 - Railway embankment
 - Slope

CFA ARCHAEOLOGY LTD
 The Old Engine House
 Eskmills Park
 Musselburgh
 East Lothian, EH21 7PQ
 t: 0131 273 4380
 f: 0131 273 4381
 e: info@cfa-archaeology.co.uk
 w: www.cfa-archaeology.co.uk

Fig. No: **1** Revision:

Title:
Trench Location Map

Project:
**Land at Larkhall Academy
Larkhall
South Lanarkshire**

Scale at A3:
1:1,250

Client:
MUSE Developments Ltd

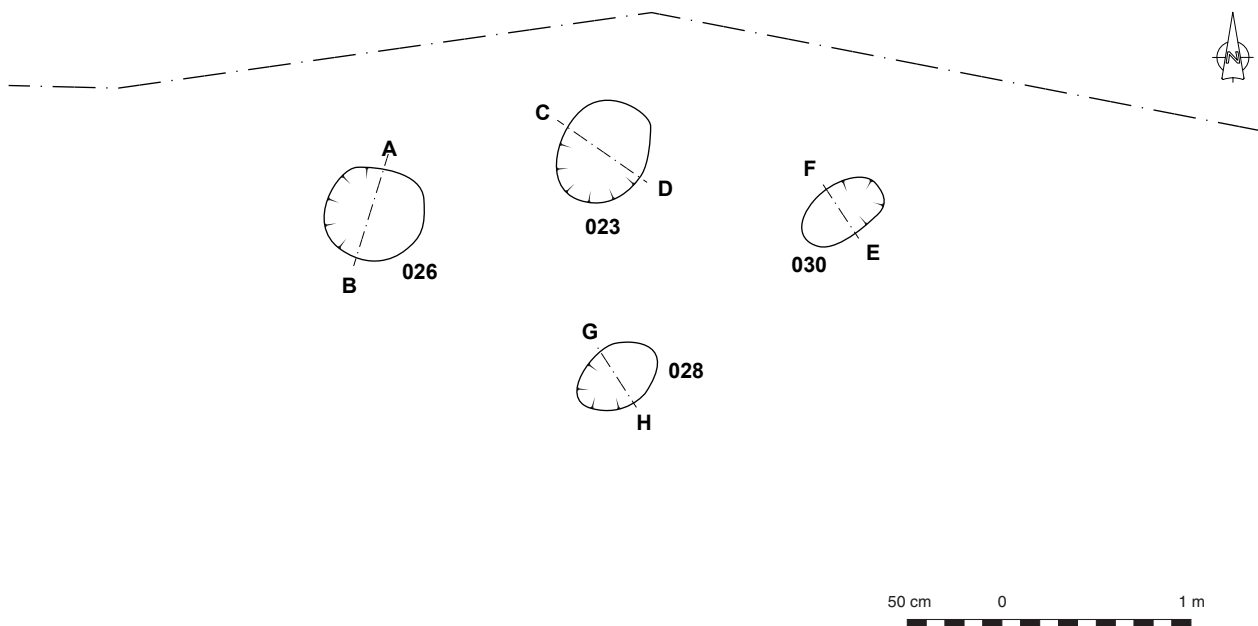


Fig. 2 - Plan of Features within Trench 17

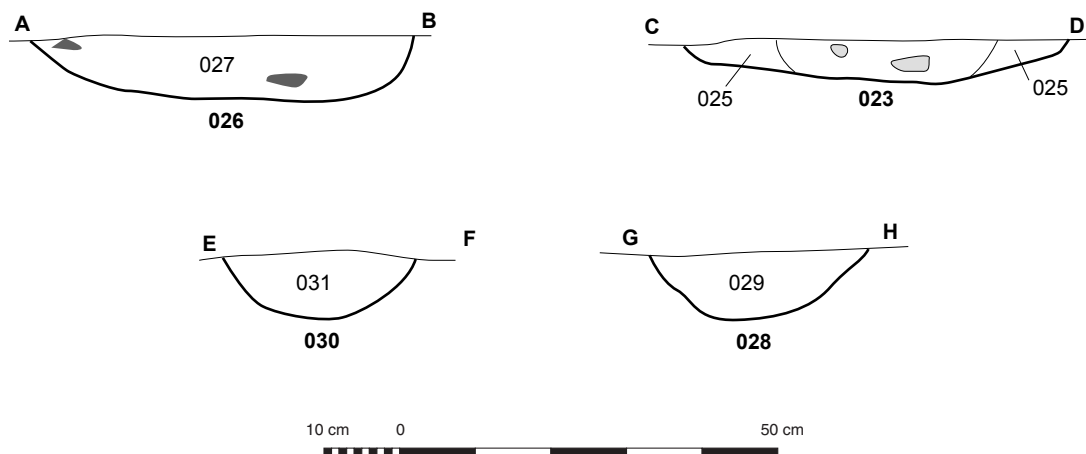


Fig. 3 - Sections of Features within Trench 17

Key:

- Pottery
- Charcoal patches

Fig. No: 2-3 Revision: A Client: MUSE Developments Ltd

Title:

Project:
Land at Larkhall Academy, Larkhall,
South Lanarkshire

CFA ARCHAEOLOGY LTD
The Old Engine House
Eskmills Park
Musselburgh
East Lothian, EH21 7PQ
t: 0131 273 4380
f: 0131 273 4381
e: info@cfa-archaeology.co.uk
w: www.cfa-archaeology.co.uk

Drawn by: LW Checked: LW Report No: 1980

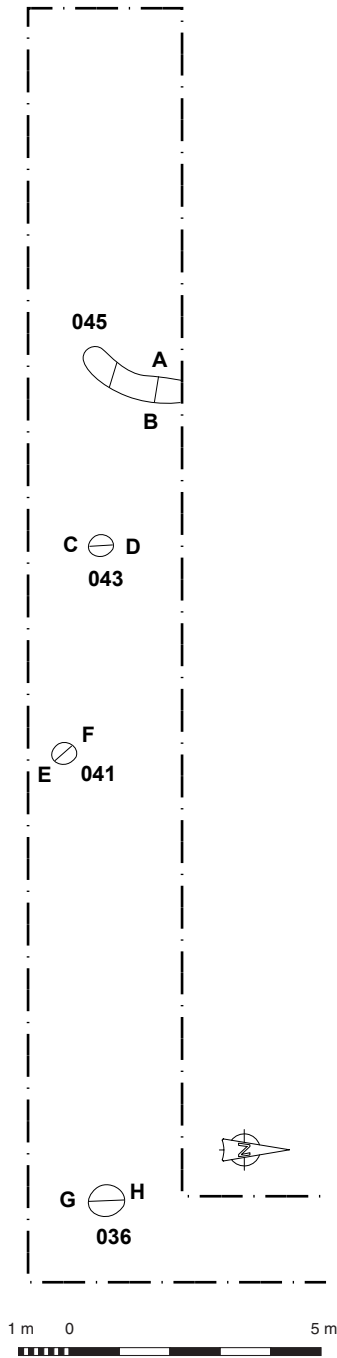


Fig. 4 - Plan of Features within Trench 61

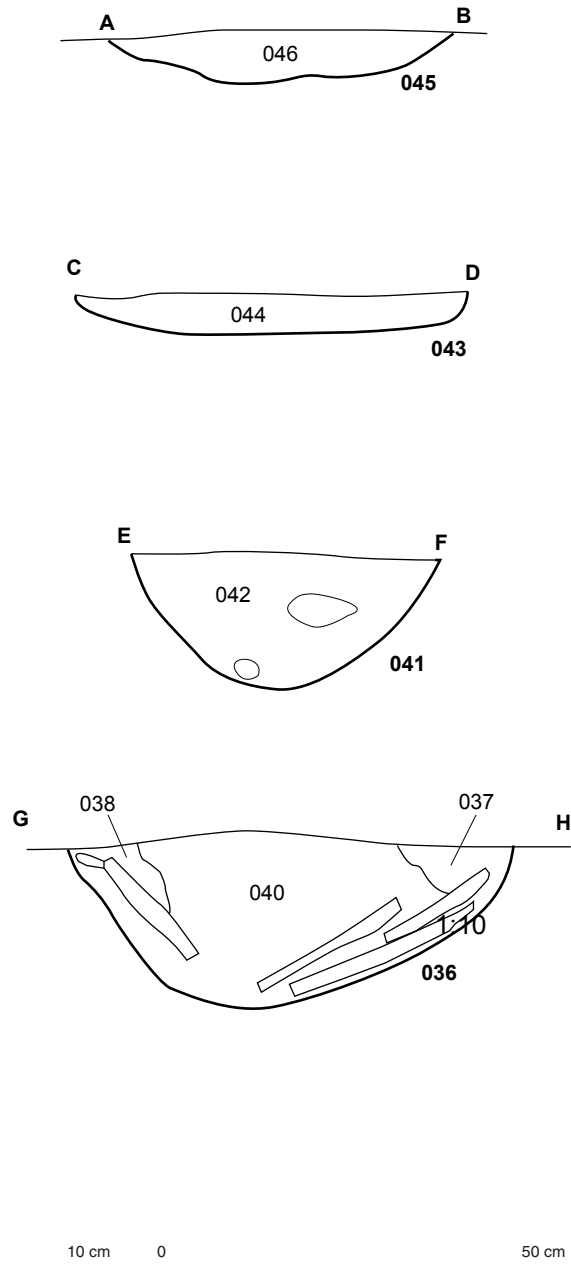


Fig. 5 - Sections of Features within Trench 61

Key:	Fig. No: 4-5	Revision: A	Client: MUSE Developments Ltd	<p>CFA ARCHAEOLOGY LTD The Old Engine House Eskmills Park Musselburgh East Lothian, EH21 7PQ t: 0131 273 4380 f: 0131 273 4381 e: info@cfa-archaeology.co.uk w: www.cfa-archaeology.co.uk</p>
	Title:			
	Project: Land at Larkhall Academy, Larkhall, South Lanarkshire			
Drawn by: LW	Checked: LW	Report No: 1980		

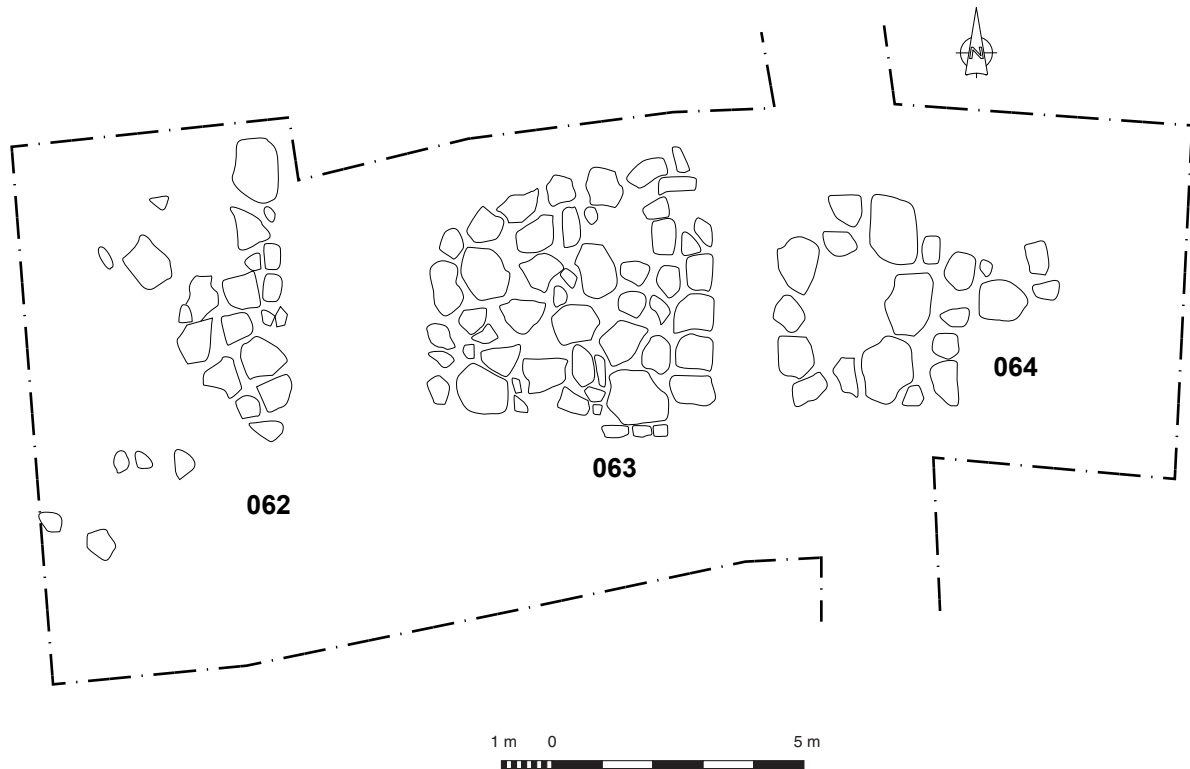


Fig. 6 - Plan of Sandstone Surfaces 062, 063, 064

Key:

Fig. No:	6	Revision:	A	Client:	MUSE Developments Ltd
Title:					
Project:	Land at Larkhall Academy, Larkhall, South Lanarkshire				



CFA
ARCHAEOLOGY LTD

CFA ARCHAEOLOGY LTD
The Old Engine House
Eskmills Park
Musselburgh
East Lothian, EH21 7PQ

t: 0131 273 4380
f: 0131 273 4381
e: info@cfa-archaeology.co.uk
w: www.cfa-archaeology.co.uk

Drawn by: LW | Checked: LW | Report No: 1980



Fig. 7 - Pit 023 with pottery *in situ*



Fig. 8 - Pit 032 in section



Fig. 9 - Ditch 034 in section



Fig. 10 - Hearth 036 in plan



Fig. 11 - Pit 049 in section



Fig. 12 - Pit 053 in section

Key:

Fig. No: 7-12 Revision: A Client: MUSE Developments Ltd

Title:

Project:

Land at Larkhall Academy, Larkhall,
South Lanarkshire

CFA ARCHAEOLOGY LTD
The Old Engine House
Eskmills Park
Musselburgh
East Lothian, EH21 7PQ
t: 0131 273 4380
f: 0131 273 4381
e: info@cfa-archaeology.co.uk
w: www.cfa-archaeology.co.uk

Drawn by:

Checked:

Report No: 1980



Fig. 13 - General view of sandstone surfaces 062,063 & 064

Key:

Fig. No: 13 Revision: A Client: MUSE Developments Ltd

Title:

Project:
Land at Larkhall Academy, Larkhall,
South Lanarkshire



CFA ARCHAEOLOGY LTD
The Old Engine House
Eskmills Park
Musselburgh
East Lothian, EH21 7PQ
t: 0131 273 4380
f: 0131 273 4381
e: info@cfa-archaeology.co.uk
w: www.cfa-archaeology.co.uk

Drawn by:

Checked:

Report No: 1980