

CFA Archaeology Ltd

archaeological consultants

Advice on Archaeology & Planning

Environmental Impact Assessment

Interpretation, Design & Display

Finds/ Environmental Analysis

Field Evaluation & Excavation

Historic Building Recording

Site & Landscape Survey

Geophysical Survey

Borders Railway Project Standing Building Surveys Sites 205, 417 & 509

Report no. 1981

CFA ARCHAEOLOGY LTD

The Old Engine House
Eskmills Business Park
Musselburgh
East Lothian
EH21 7PQ

Tel: 0131 273 4380

Fax: 0131 273 4381

email: info@cfa-archaeology.co.uk

web: www.cfa-archaeology.co.uk

Authors	Michael Cressey HND BA MSc PhD MifA FSA Scot & Stuart Mitchell MA AIfA
Illustrator	Leeanne Whitelaw BSc MifA & Graeme Caruthers MA MifA
Editor	Bruce Glendinning BSc PG Dip MifA
Commissioned by	ERM Ltd on behalf of Transport Scotland
Date issued	February 2012
Version	0
Oasis Ref	cfaarchal-1-119211

This document has been prepared in accordance with CFA Archaeology Ltd standard operating procedures.

**Borders Railway Project
Standing Building Surveys
Sites 204, 417 & 509
Report No 1981**

CONTENTS

1.	Introduction	5
2.	Methodology	7
3.	Langhaugh Mill Complex	9
4.	Stow Station House	19
5.	Torwoodlee Gate Piers	24
6.	Conclusion	25
7.	Recommendations	25
8.	References	26

Appendices

Appendix 1	Langhaugh Mill complex Photographic Register	27
Appendix 2	Stow station house Photographic Register	30
Appendix 3	Torwoodlee gate piers: Photographic Register	31

Tables

Table 1	Specific recording requirements at Langhaugh Mill	7
Table 2	Specific recording requirements at Stow station house	8
Table 3	Specific recording requirements for Torwoodlee Gatepiers	8
Table 4	Interior dimensions and summary description of the rooms within Building 2	12
Table 5	Interior dimensions of the rooms within Building 3	14
Table 6	Interior descriptions and dimensions of Building 4, South of Scotland Weavers Offices	15
Table 7	Dimensions and function of the power plant complex, Building 5	16
Table 8	Dimensions and function of Building 6 the South of Scotland Weaving Shed	17
Table 9	Interior dimensions and summary description of the rooms within Stow station house.	21

List of Figures (bound at rear)

Figure 1	Location map of the three survey areas
Figure 2a-c	Historical map regression for Langhaugh Mill
Figure 3	Building 1 William Wilson Electrical suppliers
Figure 4	Colour-coded building layout plan
Figure 4a-c	Building 2 Elevation drawings
Figure 4c-d	Building 3 Elevation drawings
Figure 5	Building 5 South of Scotland Weavers plant room complex
Figure 6	Building 6 South of Scotland Weavers building

- Figure 7a-b Historical maps of Stow Station house
 Figure 8 Stow Station House Ground Floor Plan
 Figure 9a-e Elevation drawings and location plan

Photographic Plates (bound at rear)

Plates for Langhaugh Mill complex

- Plate 1 Building 1, north-facing gable (William Wilson electrical suppliers)
 Plate 2 Building 1, west-facing elevation (William Wilson electrical suppliers)
 Plate 3 Building 2, north and east-facing elevations of the former Fjordhus Ltd offices
 Plate 4 Building 2, north and west-facing elevations of the former Fjordhus Ltd offices
 Plate 5 Building 2, east-facing gable showing rebuilt stack and bathroom extension
 Plate 6 Building 2, ground floor rear entrance with adjoining workshops
 Plate 7 Building 2, exposed roof truss and sarking boards in Unit 20
 Plate 8 Building 3 west-facing elevation and the east-facing elevation of the Fjordhus workshops
 Plate 9 Building 3, south-facing elevation, fabric detail and blocking work
 Plate 10 Building 3, south-facing elevation, M-shaped roof arrangement and adjoining modern toilet block at east end
 Plate 11 Building 3, Unit 33 cast-iron columns supporting the cast-iron roof plate
 Plate 12 Building 3, Unit 33 cast-iron column head with holes for line-shaft bracket
 Plate 13 Building 3, Unit 28 a cast-iron column with sockets for a line-shaft bracket
 Plate 14 Building 3 Unit 28 two cast iron columns with holes for line-shaft brackets
 Plate 15 Building 4, north-facing elevation
 Plate 16 Building 4 east and south-facing elevations
 Plate 17 Building 4 Unit 41 two replacement columns supporting the roof plate
 Plate 18 Building 4 Unit 41 exposed A-frame roof trusses and roof lights
 Plate 19 Building 4 Unit 38 exposed painted wall fabric behind modern cladding
 Plate 20 Building 5 Unit 1 north-facing elevation
 Plate 21 Building 5 Unit 1 south-facing elevation
 Plate 22 Building 5 Unit 22 Unit 4 north-facing elevation of the shuttered concrete building
 Plate 23 Building 5 Unit 3 North-facing elevation of the main plant room
 Plate 24 Building 5 Unit 2, engine house, north and west-facing elevations
 Plate 25 Building 6, north and west-facing elevations of the South of Scotland Weavers factory building
 Plate 26 Building 6, north and east-facing elevations of the South of Scotland Weavers factory building
 Plate 27 Building 6, Unit 3 interior view of the factory floor facing eastwards
 Plate 28 Building 6, Unit 4 interior view of the factory storeroom

Plate 29	Building 6, Unit 2, exterior east-facing wall and staircase to mezzanine floor
Plate 30	Building 6, Unit 3 textile weaving machine still in situ
Plate 31	Stow station house, Unit 1
Plate 32	Stow station house, Unit 9
Plate 33	Stow station house, Unit 11
Plate 34	Stow station house, Unit 12
Plate 35	Stow station house, Unit 16
Plate 36	Stow station house, north-facing elevation from the north-west
Plate 37	Stow station house, north-facing elevation from the north-west
Plate 38	Stow station house, east-facing elevation from the north-east
Plate 39	Stow station house, south-facing elevation
Plate 40	Stow station House, west-facing elevation from the south-west
Plate 41	Stow station house, view of the yard from the north
Plate 42	Torwoodlee Gate Piers, general view from the east
Plate 43	Torwoodlee Gate Piers, general from the south east
Plate 44	Torwoodlee Gate Piers, detailed shot of the west pier from the east
Plate 45	Torwoodlee Gate Piers, detailed shot of the pyramid-shaped coping stone

Contact Plates copied on CD

1. INTRODUCTION

1.1 General

This report presents the results of three individual archaeological standing building recording surveys carried out by CFA Archaeology Ltd (CFA) between October and November 2011. The work was undertaken in advance of the construction of the Borders Railway Project. The work was requested by the Scottish Borders Council Archaeologist and is detailed in the *Cultural Heritage Management Plan* (Jones & Neighbour 2010) for the development. Site numbers relate to study specific numbers from the Environmental Statement.

The three sites that were subjected to a standing building survey were:

Langhaugh Mill Complex, Galashiels, (Site 417) (NGR NT 49763583)
Station House, Stow, (Site 204) (NGR NT 45644454)
Torwoodlee Gate Piers, (Site 509) (NGR NT47723858)

A Written Scheme of Investigation for each of the surveys was approved by Dr Chris Bowles, the Scottish Borders Council Archaeologist.

1.2 Site Background

Langhaugh Mill Complex

Langhaugh Industrial Estate is identified as Site 417 in Table A3 in the *Cultural Heritage Management Plan* (Jones & Neighbour 2010). The site is a complex of 19th and 20th century industrial units occupied lately by small individual companies. At the heart of the complex lie a series of sandstone-built spinning sheds with M-shaped gable roofs and an associated two storey office block. These buildings are late 19th century in date and are probably the last surviving remnants of the 1870's Langhaugh Spinning Mill. Two large buildings at each end of the complex are of more recent date along with a series of ancillary buildings situated on the south side of the former mill.

Station House, Stow

The station house is identified as Site 204 in Table A3 in the *Cultural Heritage Management Plan* (Jones & Neighbour op.cit.) and will be demolished to make way for a new station and car park. This structure was originally part of an intermediate station on the Edinburgh-Carlisle 'Waverley route' of the former North British Railway which was opened by that company in November 1848. The station closed to regular passenger traffic (with the line as whole) in January 1969. The station house roughly occupies an S-shaped plan with a rectilinear central core block and two annex buildings at each end. The building is single storey with pitched slate roof with advanced eaves. The elevations are constructed of snecked whinstone with pink ashlar dressings. The former principal entrance (now blocked) is flanked by ashlar pilasters surmounted by an armorial plaque. The fenestration is surrounded by ashlar dressings and raised margins. A modern addition has been built on the elevation facing the platform.

Torwoodlee Gate Piers

The gate piers are identified as Site 509 in Table A3 in the *Cultural Heritage Management Plan* (Jones & Neighbour op.cit) and lie within a proposed access route. The piers are stone-built to a height of c.1.5m and capped with pyramid-shaped copping stones. The piers are associated with Torwoodlee House (NGR NT 41041 53242).

1.3 Objectives

The objectives of the programme of archaeological works were:

- to carry out a desk-based assessment to place all three sites in their historical context
- to carry out a Level 1 and Level 2 surveys at Langhaugh Mill
- to carry out a Level 2 survey of Stow Station House
- to carry out a level 1 survey on the Torwoodlee gate piers
- to produce an illustrated building survey report to bring together the results of all three surveys.

2. METHODOLOGY

2.1 General

An effective standard for this type of project has been established by previous building recording conducted by CFA. Recording of all structural elements was carried out following established CFA methodology and included standard standing building record sheets, sketch drawing, photographic survey and EDM survey. CFA follows the Codes and appropriate Standards set down by the Institute for Archaeologists. Recording conventions followed English Heritage (2006).

2.2 Desk-based assessment

A desk-based assessment of the readily available sources associated with all three sites was made to assess their significance within their historical and archaeological setting. The National Monuments Record of Scotland (NMRS); and Historic Scotland's Statutory List was examined to ascertain if any of the buildings were listed.

The Galashiels Local Studies section at Galashiels Library was consulted to determine if their collections included any historical documentation, including old photographs and historical accounts.

The National Archive of Scotland's on-line database was consulted to determine what records survive.

The National Map Library of Scotland was consulted to assess the cartographic record relating to the sites. Selected extracts from historical maps provided useful developmental changes in plan form for Langhaugh Mill.

2.3 Building recording parameters

Commensurate with Level 2 surveys, the drawings include all significant architectural detail including building fabric types, quoins, window dressings and blocking work. The recording requirements for all three sites as agreed in the WSI's are set out in Tables 1-3.

Area of recording	Metric Survey	Photographic Survey
19 th century buildings	Measured survey of all principal elevations	Detailed record
20 th century buildings	N/a	All general interiors/exterior
First floor interior areas	Annotated ground plans	All general interiors/exterior
Second floor interior areas	Annotated ground plans	All general interiors/exterior

Table 1 Specific recording requirements at Langhaugh Mill

Area of recording	Recording Level
Exterior elevations	Measured survey of all principal elevations
All interior areas	Comprehensive Photographic survey
Ground floor	Measured ground floor layout plan

Table 2 Specific recording requirement at Stow station house.

Recording requirements	Photographic Survey
Hand measurements	Detailed record
Location plan showing position	N/a
Brief description	N/a

Table 3 Specific recording requirements for the Torwoodlee gate piers

The Level 2 surveys were carried out according to the conventions set out in English Heritage 2006. This level of recording work combined both photographic and elevation recording. A ground plan of the buildings surveyed has also been produced. A narrative of the character of the buildings that were subjected to architectural survey has been produced and includes a descriptive summary of the major architectural features surviving on each elevation. Standard CFA building recording forms were completed during the survey.

Metric Survey

Architectural detail recording was carried out using a reflectorless Total Station (REDM) to position accurately any significant features as considered appropriate. The infra-red beam from this instrument enables points to be recorded in 3D to an accuracy of 1mm. For external elevations, control points on eaves, windows, doors and other architectural features were surveyed. The data was downloaded to a portable computer running PenMap for Windows. The resulting data was then processed to produce wire-frame templates, and used to rectify photographs.

In the case of Stow Station House the ground and first floor plans are based on measured sketches with room measurements obtained using a hand-held Leica distometer. This was then worked to scale using AutoCad software.

Photographic Survey

CFA used a digital Nikon D300 to take digital photographs of structures and specific architectural features. A list of all photographs taken are included as Appendix 1-3.

3. LANGHAUGH MILL COMPLEX

3.1 Introduction

The Langhugh Mill complex comprises six individual groups of buildings the core of which comprises the weaving sheds associated with the 19th century mill. During the last twenty years, the weaving sheds have been compartmentalised into various workshops used by a series of different companies. The largest industrial unit is currently used by a sign maker.

The buildings are numbered on the site location map (Fig 1d) and named as follows:

- Building No. 1 William Wilson Electrical (built post 1980)
- Building No. 2 Fjordhus Offices (Late 19th century with 20th century addition)
- Building No.3 Robert Headspath Sign Manufacturers (Late 19th century)
- Building No.4 South of Scotland Weavers Office (Late 19th century with 20th century additions)
- Building No.5 South of Scotland plant and generator building (20th century)
- Building No.6 South of Scotland Weavers Mill (Built post 1978)

3.2 Desk-based survey results

Cartographic sources

The 1858 First Edition Ordnance Survey map (Fig 2a) depicts a walled formal garden probably associated with Langhugh House which is situated to the north east. On the north-west side of the formal garden there is a courtyard arrangement of individual buildings forming a quadrangle with a circular feature in the middle.

The 1899 Second Edition Ordnance Survey (Fig 2b) map shows Langhugh Mill in block layout plan with a large irregular shaped building comprising weaving sheds. The spinning mill is a large square building on the east side of the weaving sheds. Various other rectilinear buildings form an L-shaped complex on the north side of the mill. A detached building (Building 2 see below) is also present on the north-west side of the main core block of the mill. The formal garden boundary still exists.

The 1932 Ordnance Survey map (Fig 2b) shows little change in layout. The aforementioned L-shaped building has been replaced by a square building which is now the Castle Warehouse buildings and which are outwith the building survey area. The formal garden boundary is depicted as a *Tennis Ground*.

The 1962 Ordnance Survey map (not shown) shows some contraction in terms of the size of the mill which is now depicted as unnamed. A rectangular building on the south side of the mill has been removed and alterations have been made to the site boundary.

The 1978 Ordnance Survey map (Fig 2d) shows the complex prior to the erection of Buildings 1 and 6. The ancillary power plant forming an irregular series of buildings (Building 5) had yet to be built in their entirety. The main core block of the Mill

(buildings 3 and 4) has been reduced in size with the removal of a rectangular building on the south side of the complex.

National Monuments Record of Scotland (NMRS)

The NMRS does not hold any records for Langhaugh Mill.

Statutory List

Langhaugh Mill does not appear on Historic Scotland's Statutory List of Listed Buildings.

National Archive of Scotland

The National Archive of Scotland holds one record (Record Sept 2/84) for West of Scotland Home Industries Ltd, Langhaugh Mill, Galashiels 1973-1974 but the record is not available for public consultation.

Bibliographic Sources

The publication *Galashiels a Modern History* (1983) provides a useful account on the manufacturing history of Langhaugh Mill. George Currie, George McDougall and Charles Scott erected Langhaugh Mill in 1875. By 1910 the mill had changed hands and was under the ownership of D.M Brown and Son. In July the following year the four storey spinning mill burnt down but the weaving sheds survived. What survived of the mill passed through various owners until in 1946 when it was bought again by Currie, McDougall and Scott. This company ran a shop selling textile products and had a manufacturing unit which by the 1950s comprised 12 Hattersley domestic looms and four Dobcross power looms. In 1951 Armstrong Vickers occupied some of the sheds of Langhaugh Mill although what they made is not documented. In 1971 the premises were sold to the Galashiels Council. A new company took over part of the mill under the name of West of Scotland Home Industries and with 18 looms manufactured mohair scarves, rugs and blankets. Another fire occurred in 1976 destroying several mill buildings. A new building was erected (Building 6 see below) by South of Scotland Home Weavers, which was the Scottish arm of a Dutch subsidiary (Phoenix Yarns, of Tilburg, Holland) who operated eight Dobcross looms and four Rapier looms. The same company had offices in part of Building 4 (see below).

3.3. Building Survey Results

3.3.1 General

The results of the building survey are now described starting with a descriptive summary of the layout plans. Survey recording constraints included no formal access to the interiors of Buildings 1 and 5 and limited access to the interior of Building 6 on health and safety grounds. The site layout is depicted on Fig.1d.

3.3.2 Building No 1: William Wilson electrical building (Fig 3a-b)

This building measures 24.5m long and is 11.3m wide. The building is one of two steel-clad buildings that were built on the west side of Langhaugh Mill during the 1980s to the same design. No internal access was available during the survey but the ground and first floor layout plan has been included in the report to compliment the photographic record (Plates 1-2).

3.3.3 Building 2: Fjordhus offices and workshops (Figs 4a-c)

Layout Plan and interior descriptions

Building 2 comprises the former office of Fjordhus a company engaged nearby in the manufacture of wooden houses. The principal building comprises a two storey house with attic space and modern adjoining offices. The rear (south-facing elevation) has a large workshop and ancillary stores built against it. The interior units are described in Table 4.

Unit	Dimensions (L x B x H)	Architectural Description
1	7m x 5.8m x 2.6m	Office- L-shaped office with panelled walls. Modern PVC windows on north-facing elevation.
2	3.9m x 2.6m x 2.6m	Office- Formed with stud partition walls lit on the south-facing elevation by a small PVC window.
3	4.4m x 3.9m x 2.6m	Office- Lit on the north-facing elevation by a PVC window. Modern six panelled door to Unit 3 and 4. Moulded cornice is the only period feature.
4	4.4m x 0.9m x 2.6m	Hall and below-stairs cupboard- Period 4-panelled door on stairs cupboard
5	3.9m x 3.6m x 2.4m	Office- A windowless room, single glass panelled door to hallway. Boxed in window now a cupboard on north-facing elevation.
6	2.9m x 0.9m x 2m	Modern toilets- (ladies & gents) white sanitary goods. Panelled woodchip covered walls. Windowless.
7	2.7m x 1.9m x 2.7m	Cupboard- Featureless wooden cupboard with four shelves. Lath and plaster walls and ceiling.
8	2.7m x 1m x 2.7m	Kitchen- Lit on south-facing elevation by a 2-paned casement window. Lower pane is blind. Modern sink unit and cupboards. Plain panel door to stairs.
9	3.9m x 1.1m x 2.3m	Hallway- Hall to stairs on the north side of the building. Plain panelled door from main office. Lit on south-facing wall by a single PVC window.
10	12.7m x 0.9m x 2.7m	Staircase- Lath and plaster lined walls. 15 tread staircase with featureless walls. Stairs lit by a 2-paned sash-and-case window on north-facing elevation. The window measures 1.5m x 0.9m.

11	1.2m x 1m x 2.7m	Vestibule- located at the top of the staircase. Door to office is modern.
12	5.9m x 3.9m x 2.7m	Office- plaster-boarded walls with a cupboard in the south-west corner of the room. Lit on the north and south-facing elevations by PVC windows. Original moulded cornice.
13	3.6m x 2.9m x 2.7m	Office- lit on south and east-facing elevations with two 2-over2 sash and case windows. Interior all modern.
14	3.5m x 0.8m x 2.7m	Hall- leading to rooms on the north-side of the building with featureless walls.
15	5.9m x 1.9m x 2.7m	Office- Lit on south-facing elevation by a 1-over-1 sash and case window. A door on the west-facing elevation access Units 16 and 17. A ladder to the loft is situated at the west end of the room.
16	2.4m x 0.6m x 2.6m	Sink and cupboard- Lit by a single 1-over-1 sash and case window.
17	1.9m x 1.7m x 2.6m	Toilet and Shower- Modern shower cubicle and sanitary goods. Pink tiled walls. Lit on the west-facing elevation by a frosted 1-over-1 sash and case window.
18	3.9m x 3.3m x 2.1m	Attic Room- Timber clad walls with a large velux window lights the room.
19	1.8m x 3.4m x 2.1m	Storage area- loft hatch and built-in cupboard on north-facing wall. Lit by a roof light.
20	3.3m x 3.2m x 2.1m	Attic Room- Timber clad walls with original late 19 th century pine boards. A-frame rafter exposed. Scarfe-jointed and nailed

Table 4 Interior dimensions and summary description of the rooms within Building 2.

Exterior architectural descriptions - North-facing elevation (Fig.4a)

The north-facing elevation measures 29.3m long and comprises a two story house with extensions on the east and west sides. On the East side a trapezoidal-shaped shed constructed of breeze-blocks with a sloping corrugated asbestos roof adjoins a brick-built building that is outshot from the gable wall of the two-storey house. Situated against the west-facing gable is a modern single storey office with a flat roof and wet-dash rendered walls. The building has a rectangular opening containing the main door with narrow wooden side windows. The main door is flanked on its west side by a single window. The main facade of the house measures 10m long and comprises snecked whinstone. The fenestration consists of three bays with two narrow windows on the east side flanked by two larger windows. The main door is off-centre with the surrounding bays. The bay at the west end has the same sized windows as the middle bay. All the window and door dressings are sandstone and highlighted with cream-coloured paint. The quoins are droved sandstone and un-painted. A modern hard-wood six-panelled door accesses the main staircase.

Exterior architectural descriptions - West-facing gable (Fig 4c)

The west-facing gable is masked to first floor level by the modern office. The walls are constructed of whinstone with sandstone quoins. The apex of the gable has been repaired with common brick following the removal of the chimney stack.

Exterior architectural descriptions - South-facing elevation

The south-facing elevation is visible from within an adjoining carpentry workshop. The ground floor windows at the west end are open whilst those on the east side have been blocked including a first floor window.

Exterior architectural descriptions - East-facing gable (Fig. 4b)

The east-facing gable is hidden to first floor level by the aforementioned lean-to shed. The outshot brick-built building rises to about 3m from the apex of the roof. The main gable has ashlar quoins and a brick-built chimney stack with two hexagonal chimney pots.

Fjordhus workshop and stores (Fig 4).

Adjoining the south elevation and east gable of the former Fjordhus office building, there is a large carpentry workshop flanked on the north and south by timber stores. All the buildings are built of concrete breeze-blocks with sloping asbestos covered roofs. The main doors face into a courtyard. The sheds were erected in the recent past (c.1990s).

3.3.4 Building No 3 former Weaving Shed (Fig 4)

Layout Plan and interior descriptions

The interior of the main core block of the late 19th century mill is described in Table 8. No access could be gained to Unit 32 or the rectangular room adjoining Unit 29. The main core block of the weaving sheds occupies a rectangular plan made up of units 21-33. A passage (Unit 31) divides a second suite of rooms (Units 34-36 and 41-44).

Unit	Dimensions (Lx Bx H)	Architectural Description
21	3.2m x 1.9m x 2.4m	Vestibule- Featureless walls, doorway to Advances Signs and main exit doorway
22	4.8m x 1.4m x 3.3m	Hallway- Featureless hallway with entrances to two modern offices
23	4.1m x 2.9m x 3.3m	Office- Modern office suite with plaster-boarded walls
24	4.1m x 2.9m x 3.3m	Office- Modern office suite with plaster-boarded walls
25	5.7m x 6.6m x 3.3m	Workshop- L-shaped workshop with breeze-block walls and no fenestration
26	4.6m x 3.1m x 3.3	Office/printing room- featureless walls, with no fenestration
27	7.9m x 5.6m x 3.3m	Cutting Room/Workshop- Panelled-lined walls, false ceiling.
28	19.7m x 5.8m x 4.8m	Workshop- Breeze-block partition wall and four cast-iron columns visible. Tiled floor.
29	5.8m x 4.5m x 4.8m	Workshop- Featureless rectangular room with two cast-iron columns visible.
30	4m xx 2.5m x 3.5m	Offices/stores- Two small offices/stores separated by modern stud-partition wall with main office and stores attached
31	13mx5.7mx2.2m	Passage- Main partition wall of the late 19 th century core block. The rest is modern 20 th century interior.

32	No access	N/a
33	13m x 5.8m x 3.7m	Joiners Workshop -Two cast-iron columns are situated 7.4m apart and 3.7m high. The rear wall (north-facing) is the original gable wall of the weaving shed core block.
34	4.3m x 2.8m	Toilet block - disused with three cubicles.
35	4.4m x 2.4m x 2.6m	Cloakroom & Stores -Feature less panelled walls lined with shelving and cupboards
36	4.3m x 2.9m x 2.6m	Toilet block -Three cubicles lit on the north-facing elevation by cast-iron windows.
37	See table 6	
38	See table 6	
39	See table 6	
40	See table 6	
41	6m x 3.6m x 4m & 2m	Workshop - Part of the spinning mill core block with a east-facing rubble-built spine wall. The west-facing elevation has a blocked fire door with a hanger above. The south-facing elevation is modern brick-brick built. Three columns present with cast-iron plate for line-shaft housing. Nailed A-frame roof trusses with roof lights present
42	4m x 3.2m x 4.5m	Spray shop - featureless plaster-boarded walls with three blocked windows on the west-facing wall.
43	2.5m x 2.2m	Office - brick built office or office connected to the spray shop, modern with no interesting features.

Table 5 Interior dimensions of the rooms within Building 3.

Exterior architectural descriptions - North-facing elevation (Fig. 4d)

The north-facing elevation is 22.8m long and comprises three pitched gables with slate roofs and forming a treble-span gable. The walls are constructed of well coursed whinstone. The quoins are ashlar Old Red sandstone and droved. The westernmost gable has three blocked doorways each with ashlar sandstone surrounds with droving. The blocking work on all three doors is common brick laid in Stretcher bond.

Exterior architectural descriptions - South-facing elevation (Fig. 4e)

The south-facing elevation is 23m long and shares the same roof configuration as the north-facing elevation. The westernmost gable has a single doorway with ashlar sandstone surrounds and blocked with brickwork. The doorway is more squat than those on the north-facing elevation and measures 1.3m by 1.1m. The rest of the walls are rubble-built and features.

The south elevation also includes a brick-built toilet block and store shed (Units 34, 36, 42 and 44) and is advanced of the main gable line by about 2.5m. At the east end is the main two storey block of Building 3, the offices of the South of Scotland Weavers.

Exterior architectural descriptions - West-facing elevation

The west facing elevation is 25m long and 3.4m high and constructed of coursed whinstone with ashlar dressings. Four doorways are accessed down a narrow alley formed by the erection of the Fjordhus workshops (see above). The doors are all now

blocked with the same style of brickwork used on the north and south-facing elevations.

3.3.5 Building 4 South of Scotland Weavers Offices

Layout Plan and interior descriptions

The interior of the South of Scotland Office suite is described in Table 6. The interior rooms have modern interior cladding and the only original features present are the late 19th century partition walls in Unit 38 and the A-frame roof joists in the first floor rooms (Units 47-49).

Unit	Dimensions (Lx Bx H)	Architectural Description
37	6m x 4.6 x 2.3	Office -Modern lined office interior with Formica panelled walls. Lit on the west-facing elevation by a casement window.
38	7.8m x 3.10m x 2.6m	Stores -Gypsum board-lined walls with the main party wall of the 19thC exposed on the north-facing elevation
39	7.5m x 4.1m	Stores -Modern staircase to F/F with a brick-wall and door leading to Unit 38. A double-leafed door opens to Unit 40.
40	6m x 3.6m x 4m	Stores -White-painted plaster walls lit on south-facing elevation by two casement windows. A vestibule is present at the east end of the room.
45	5.6m x 4.2m x 2.1m	Office -Featureless plaster-boarded walls lit on the west-facing elevation by two casement windows
46	3.2 x 1.5	Photocopying room -Featureless walls, lit by a small window on the north-facing window
47	7.2m x 3.6m x 2.1m	Office -Featureless boarded walls. A-frame tie beam exposed in the ceiling.
48	3m x 3m	Office -Featureless boarded walls. A-frame joists exposed in the ceiling.
49	4.8m x 2.1m	Office -Featureless room boarded out. A-frame roof trusses exposed in the ceiling
50	No access	No access
51	No access	No access

Table 6. Interior descriptions and dimensions of Building 4, South of Scotland Weavers Offices

Exterior architectural descriptions - North-facing elevation (Fig. 4f)

The north-facing elevation measures 17m long and with walls constructed of blocks of rough-dressed whinstone laid in regular courses. The window surrounds and quoins are pale old red sandstone with droving. Three gables walls are present forming a double M-shaped arrangement. The easternmost gable is the tallest of the three. Here two casement windows are framed by dressed surrounds. The northernmost window surround is concrete replicating droved sandstone. On the west side of the two windows is a doorway which is an insert surrounded by common brickwork. Cast-iron rain goods drain the valleys. At the west end of the elevation a modern entrance has been created allowing access from the office opposite. The doorway is surmounted by harled stonework.

Exterior architectural descriptions - East-facing elevation (Fig. 4g)

The east-facing elevation measures 16.8m long and with walls constructed of blocks of rough-dressed whinstone laid in regular courses. The window surrounds and quoins are pale old red sandstone with droving.

At the south end a two storey extension with rough-cast harled walls is lit on the first floor by two casement window. A wooden door with slatted glass inserts is present on the north side of the windows. The first floor is lit by two rectangular windows. The roof is flat.

Ashlar stonework rises to about one metre above the junction of the adjoining pined slate roof of the main block. The main block has a large bay opening with dressed surrounds. The opening has been infilled with ship-lap woodwork and contains a blind doorway and casement window. On the north side of the bay opening there is a small casement window. At the north end of the elevation a doorway has been inserted in a larger opening. Shiplap timber work surrounds a brown-painted door similar to that situated at the south end of the elevation.

Exterior architectural descriptions - South-facing elevation

The south-facing elevation comprises 20th century additions to the main core block of the mill and includes an office and toilet block. The elevation is 8m long and is featureless with the exception of a small casement window in the eastern corner at first floor level.

3.3.6 Building 5: Scotland Weavers Plant and Generator buildings (Fig 5)

This group of buildings comprises five individual structures (Units 1-6 in Table 7) as the power plant for Building 1. No interior access was available into any of the units at the time of the survey due to health and safety reasons.

Unit	Dimensions	Function
1	18m x 12m	Plant storage shed
2	3.5m x 3.1	Engine House
3	19.6 x 12.5m	Single storey shed
4	6m x 2.6	Lean-to shed
5	11m x 7m	Fuel Storage Tower
6	11m x 5.7	Fuel Storage Tank and containment wall

Table 7 Dimensions and function of the power plant complex, Building 5

Unit 1 Corrugated steel hut (Plate 20 &21)

This building resembles a Nissan hut and rests on harled brick foundations. The building is clad with corrugated iron. The main access is on the north-facing elevation where a double-leafed door is present.

Unit 2 Engine House (Plate 24)

This building is 1.3m high and capped with a cast-concrete slab roof resting on brick walls (Stretcher Bond). Blind rectangular openings are present on the north east and west sides. The door is on the south side of the building. Judging by the smoke blackened surrounds of the rectangular openings this building probably housed a small ancillary diesel engine.

Unit 3 Single Storey Shed (Plate 23)

This is a brick-built single storey building with a flat roof. The building is lit on the west end by a single window. The main door is on the north-facing elevation. The west end of the building adjoins the corrugated iron shed (Unit 1) where a blue wooden door provided access. The south-facing elevation is featureless.

Unit 4 Fuel Tank (Plate 22)

This is a two storey structure constructed of concrete mono-blocks. The exact function of this structure is not known but it is likely to contain an internal high level fuel storage tanks. The design of this building is completely fire proof.

Building 5 Fuel storage tank and containment walls (Plate 22)

An external steel fuel storage tank rests within the interior of a walled mono-block constructed wall measuring 1.2m high and 0.4m wide wall. This containment wall provided protection for fuel spills.

3.3.7 Building 6: South of Scotland Weaving Shed (Fig 6a-b)

Layout Plan and interior descriptions Figs 6a-b

The South of Scotland weaving shed occupies a rectangular plan and is a purpose-built steel-framed shed and clad with metal sheeting. The interior walls are clad with fibre board. Table 8 lists the individual sizes of each internal unit as far as is known. The offices (Units 1 and 2) are brick-built with an assortment of partitions forming the workers offices, toilets and canteen and a separate access corridor.

The factory floor (Unit 3) contains a single weaving machine that has been left in situ. At the west end of the building a doorway leads into a rectilinear-shaped storage area (Unit 4). At the south end, a flight of stairs leads to a second floor. At the north end on the ground floor another small square storeroom (Unit 5). Units 6 and 7 appear to have been associated with both storage and workshop. The larger Unit 7 contains electrical switch gear. Unit 8 is a mezzanine floor above the office complex and accessed by a wooden staircase on the north side of the works canteen.

Unit No.	Dimensions	Function
1 multiple rooms	N/a	Office complex and toilets
2 multiple rooms	N/a	Workers toilets, cloakrooms and canteen
3	36m x 26m x 6.2m high	Main factory spinning floor
4	19m x 6.9m x 3m	Stores/workshop
5	7.2m x 5.5m x 3m	Stores/workshop
6	11m x 5.6m x 5.7m	Workshop
7	13.5m x 7.5m x 5.7m	Electrical plant room/workshop
8	14.4m x 8.9	Mezzanine floor for stores

9	No safe access	Stores?
10	No safe access	Stores?

Table 8 Dimensions and function of Building 6 the South of Scotland Weaving Shed
Exterior details (Plates 25 & 26)

The building measures 44m long and 27m wide. The north-facing elevation has the main access routes into the building. The west-facing elevation has four doorways on the ground floor with two windows surmounted above and lighting the mezzanine floor. The east-facing elevation has no doorways but does have a small central window present. The South-facing elevation is featureless.

3.4. Discussion

The survey of the Langhaugh Mill complex has been successful in identifying the late 19th century weaving sheds which lie within the main core block of Building Nos. 3 and 4 which are both represented by the double-M-shaped roof configuration. The external appearance of the weaving sheds has changed little since they were constructed with the exception of the addition of 20th century buildings.

Building 2

Building 2 is contemporary with Langhaugh Mill and was probably built to house the mill manager or his deputy. The building incorporates the same fabric as Buildings 3 and 4. Internally it has been refurbished to suit the needs of modern offices with the addition of more office space within the annex building built against the west-facing gable. Period features are rare with the exception of the timber clad walls in Unit 20 the attic room. The roof trusses are probably of original 19th century date, but the chimney and slate roof are early 20th century additions.

Buildings 3 and 4

The interiors of Building 3 and 4 contain the main core block of the Langhaugh Mill weaving sheds. These have been radically altered during the 20th century to suit the needs of industrial workshops. The installation of new partition walls to make the smaller industrial units has led to the removal of a large proportion of the cast-iron columns which originally supported the treble-span A-frame roof but also provided the power transmission routes to the weaving machines via overhead line shafts. These were driven by a set of bevel gears from a vertical engine house situated externally at the corner of the sheds. This building has long since been removed. Once electricity was installed in the early 20th century the weaving looms would have been powered by belts driven electric motors.

The treble-span roof arrangement and the position of the cast-iron columns shows that the shed was divided into three bays with the weaving looms situated at each end below the line shafts and ancillary belt drives. Unit 41 has replacement columns that were installed to support the roof.

Buildings 1, 5, 6

Buildings 1, 5 and 6 were all built during the 20th century and are of no historical interest.

4. STOW STATION HOUSE

4.1 Introduction

The location of Stow station house is shown on Fig 1b. The building is identified as Site 204 in Table A3 in the *Cultural Heritage Management Plan* (Jones & Neighbour op.cit.) and will be demolished to make way for a new station and car park. This intermediate station on the Edinburgh-Carlisle 'Waverley route' of the former North British Railway, was opened by that company in November 1848. The building is detached with additions dating to the 20th century. The survey methodology is described in Section 2 and there were no recording constraints at the time of the survey.

4.2 Desk-based survey results

Cartographic sources

The First Edition 1854 Ordnance Survey map (Fig 7a) shows the Z-shaped arrangement of the station house and a platform-side building. To the south are two goods sheds with three branch lines trending north to south. The same detail is shown on the 1892 Second Edition map. The 1907 Third Edition sheet (Fig 7b) shows the station house and platform side building. A pedestrian footbridge is also depicted. A single goods shed is present with a connecting spur onto the main line. The 1966 Ordnance Survey map shows no changes have occurred to the station house or its platform side building. The goods shed has been removed. The 1988 and 1997 Ordnance Survey maps shows the block layout of the station house and it is the same as the 1966 map sheet.

National Monuments Record of Scotland (NMRS)

The NMRS holds three records for Stow Station along with 18 digital images including aerial photographs and photographs of the Station House from various aspects. Record NT44SE 28.01 is for the station and footbridge and Waverly Line. Record NT44SE 28.11 relates to its goods yard and Record NT44SE 22 relates to a surviving section of track bed.

Statutory List

Stow Station House is not included in Historic Scotland's Statutory List.

National Archive of Scotland

The National Archive of Scotland contains four historical plans of Stow Station:

- Record RHP 12093 (untitled drawing dating to 1878)
- Record RHP38788 (c.1945) Track diagram of the station at Stow
- Record RHP36480 (20th century) Plan of Stow Station
- Record RHP 29479 (British Railways 1960)

None of the plans were examined on the grounds that they would not provide any meaningful information pertinent to the architectural fabric of Stow station house.

Bibliographic Sources

On-line sources examined include the Railscot archive of photographs for Stow Station (<http://www.railbrit.co.uk/location.php?loc=Stow>). Another website (www.kosmoid.net/portobello/waverley) provided two historical photographs of the Station House.

The SCRAN online local historical database contains two images of Stow. One image shows the station footbridge and the other a standard British Rail station sign depicting 'Stow'.

The Object Name Book of the Ordnance Survey describes 'Stow Railway Station' as 'A small dwelling house and offices. Houses are in good repair they are the property of the North British Railway Company and built by them for a dwelling house, booking office etc for the station master' (Ordnance Survey Name Book 1852).

4.3. Building Survey Results

Layout Plan and interior descriptions

The station house ground floor layout plan is produced as Figure 8 which includes Unit numbers associated with the features listed in Table 9. Interior photographs are shown on Plates 31-35.

Unit	Dimensions (L x B x H)	Architectural Description	Digital Photo No & (direction facing)
1	5.7m x 4.7m x 2.9m	Living Room -Plywood fire surround with modern tiles. Box skirting boards with top moulding. Four-panelled door. Wooden shutters on three modern PVC windows	1 (NE) 2 (E) 3 (S) 4 (N) (see PLATE 31)
2	3.3m x 3.3m x 2.4m	Double Bedroom - features entry door and plain skirting boards, plain plaster cornice. Single window on the north-facing interior wall with splayed surround and painted timber shutters.	5 (N) 6 (S)
3	4.7m x 3.2m x 3.3m	Kitchen - Modern fitted kitchen accessed down a step from the hall. Two windows on interior north-facing wall with splayed surrounds. One window has a timber shutter. Gemini oil fired boiler in situ.	7(N) 8 (S)
4	4.4m x 1.1m	Hall -providing access to Units 1-2 and 8. Plain skirting board. Links with another hall (Unit 5)	9 (W)
5	3.8m x 1.2 x 2.3	Hall -accessed through a door on the interior east-facing wall, providing access to Units 3, 6 and 7. False ceiling providing access to a water tank.	10 (W)
6	5.6m x 2.7m x 2.3m	Box room -within an extension with timber	11(S)

		laminate walls. Fitted wardrobe. Large PVC window on interior east-facing wall.	12 (N)
7	1.7m x 1.7m x 2.1m	Box room -situated of hall (5) down to steps. Sloping roof with Velux window.	13 (S)
8	2m x 1.8m x 2.4	Bathroom - accessed via a step up from the hall (4). Modern sanitary goods. Sloping roof with Velux window.	14 (S) 15 (W)
9	7.7m x 2.8m	Garage -Blocked door and exposed roof truss. Blocked sliding coal chute.	193 (S) 194 (W) 195 (W) (PLATE 32)
10	4.7m x 3.9m x 3.3m	Living Room - Timber skirting boards. Inset bay window on west-facing interior wall with panelling below. Window on north-facing wall is splayed. Both are PVC sash and case. Cupboard present on the west-facing wall. Modern fireplace. Cornice and picture rail. Four-panelled timber door.	136 (S) 137 (NW)
11	4.7m x 4.2m x 2.7m	Kitchen -Splayed window on the west-facing wall. Tongue-and-grooved panelling below. Modern kitchen. Narrow splayed window on the east-facing wall. PVC door to yard. Beam framed by plaster supports.	138 (NW) 139 (NE) (PLATE 33)
12	4.5m x 3.5m x 3.3m	Bedroom -boxed wardrobe and storage on interior west wall. Splayed window on east wall. Timber cladding all round the room. Moulded cornice. Cast-iron fireplace on the east-facing wall. Cupboard on the east-facing wall.	140 (NE) 141 (E) 142 (SW) (PLATE 34)
13	4.4m x 3.6m x 3.3m	Bedroom -Splayed PVC window on the interior south-facing wall with storage space underneath. Fireplace has been converted into storage space.	143 (SE) 144 (SW)
14	5.9m x 1.1m x 3.3m	Hall - High ceiling with cornice and picture rail and rail at dado height. Moulded skirting boards.	145 (N)
15	2.2m x 1.1m x 2.6m	WC/Bathroom - Modern sanitary goods, modern PVC window on interior south-facing elevation	146 (S)
16	2m x 1.2m x 1.6m	Coal bunker - randomly-coursed whinstone walls with timber/plywood interior east-facing wall. Sloping ceiling is covered with plywood. Tongue-and-grooved door on the east-facing elevation. Ashlar quoins with droving frame the door.	147 (E) (PLATE 35)
17	4.6m x 1.9m x 2.1	Potting shed - brick-built interior and concrete floor. Plastered walls and ceiling, lit by Velux window.	148 (N)
18	7.7m x 2.8m x 2.3m	Garage - Brick-built walls and concrete floor. PVC window over the door on the north side. Outshot from the original house elevation.	149 (S) 152 (W)

Table 9 Interior dimensions and summary description of the rooms within the station house.

Exterior architectural descriptions - North-facing elevation (Fig 9a, Plates 36 & 37)

The north-facing elevation measures 10.7m long and is 3.5m high. The elevation has a sandstone scarcement at the base and is constructed of coursed whinstone (laid in traditional sneck bond) with pink sandstone ashlar quoins with raised margins surrounding the three windows. The central window measures 1.4m x 0.7m and is flanked by two larger windows that are 1.9m high by 1m wide. The easternmost window is blocked. The chimney stack is built of ashlar sandstone and is shouldered with a moulded cap stone that supports a hexagonal chimney pot. The slate-covered roof has advanced eaves.

Exterior architectural descriptions - East-facing elevation (Fig 9b, Plate 38)

The east-facing elevation is constructed with the same material as on the north-facing elevation with a 0.3m high ashlar scarcement at the base. The main north-south trending range has a three windows and a door at the end towards the re-entrant angle of the outshot gable. The door is a double-leaved timber replacement with a three-paned transom light above. The east-facing gable measures 6.1m wide and has a central window measuring 1.9m high by 1m wide. The eaves are advanced.

Exterior architectural descriptions - South-facing elevation (Fig 9c, Plate 39)

The south facing elevation comprises the south gable of the main north-south range and the side of the outshot west range. The main build of both elements is the same snecked whinstone with a 0.3m high sandstone scarcement and pink ashlar quoins with raised margins.

The outshot west range has two windows set either side of a projecting former principal entrance. The former entrance is flanked by ashlar pilasters, capped with a pitched roof and surmounted by a blank armorial plaque. The windows measure 2m by 1.2m and are surrounded by pink ashlar quoins, lintels and projecting sills. The roof has advanced eaves and is covered with grey slate. A brick built chimney stack with an ashlar plinth supporting two chimney pots is set on the east end of the roof apex.

The south facing gable of the main north-south range is also built of snecked whinstone framed by pink ashlar quoins with a sandstone scarcement. It has a centrally placed vertical window measuring 0.2m by 2.1m which is framed by pink ashlar quoins, lintel and projecting sill. The pitched roof has advanced eaves.

Exterior architectural descriptions - West-facing elevation (Fig 9d, Plates 40)

The main build is snecked whinstone with ashlar dressings and raised margins. A large vertical window is present with a projecting sill with vertical droving in lower half and horizontally on upper. A small window with quoins and a projecting sill is partly obscured by an extension. The eaves are projecting.

The west-facing gable is 6.1m wide and 3.3m high to below the eaves. The gable incorporates the same snecked whinstone and ashlar dressings used on the aforementioned elevations. An ashlar built window with pilasters, moulded cornice

and pediment occupies the centre of the gable. The gable eaves are projecting. An ashlar-built chimney stack has a single chimney pot.

The west-facing elevation within the yard area (Fig 9e, Plate 41) is partially masked by the roof of the west-facing elevation. The elevation incorporates the gable of Unit 13 and the west-facing elevations of Units 11 and 12. The fabric used to construct this elevation is the same as the rest of the building and contains a single door to Unit 11 that is flanked by two windows.

4.4 Discussion

Historical photographs of the station house taken in c.1961 show that the ornate ashlar pilasters and pediment on the south-facing elevation contained a pair of 6-paned windows with two small panes above set within narrow astragals. The station clock occupied the centre of the top set of windows. Below at the base of the window, there was a metal frieze with ball finials and a plaque. The ashlar stonework below the window was then whitewashed.

Stow Station sits perfectly within the 'Victorian Revivalist' style of architecture which saw the development of wide spreading roofs broken with gables that were emphasized by deep eaves, carved wooden barge boards and tall chimney stacks. There are innumerable parallels for Stow Station within the Victorian rail network of Scotland and with varying levels of scale and ornamentation, some typical examples might include; Dunkeld Station, Perthshire, (NMRS NO 04SW 47.00), Longniddry Station, East Lothian (NMRS NT47NW 49.00), Cummertrees Station House, Dumfries, (NMRS NY16NW 7), Stobo Station, Scottish Borders, (NT13NE 50.00) and Drem Cottage, East Lothian (NMRS NT57NW 77).

The interior of Stow station house has been greatly altered to suit the needs of later 20th century living standards and there are no significant features surviving relating to its formal use as the station masters house and booking office.

5. TORWOODLEE GATE PIERS

5.1 Introduction

The gate piers are identified as Site 509 in Table A3 in the *Cultural Heritage Management Plan* (Jones & Neighbour op.cit) and lie within a proposed access route. The piers are associated with Torwoodlee Mansion House (NGR NT 41041 53242) and are situated on what was a less formal entrance to the house from the north in contrast to the southern entrance that had its own gate lodge.

5.2 Desk-based survey results

Cartographic sources

The gate piers do not appear on any of the historical maps.

Statutory List

The Statutory List records Torwoodlee Mansion House (HB Number 135) as a Grade A listed structure.

5.3 Survey Results (Plates 42-45)

Three sandstone gate piers are present and flank a track and pedestrian path. The distance between those either side of the track is 3.4m and those either side of the path is 0.89m. The piers are identical in form and are 1.54m high with bevelled corners. All sides have fine shallow horizontal droving although much of this has eroded. The pyramidal capstones have been hewn from a single block of sandstone and each has a shallow channel under the lip, the purpose of which is unclear. The capstones rest on a levelling bed of mortar. The blue and white painted double-leafed wrought-iron gates have spear-shaped finials and appear to be contemporary with the gate piers.

6. CONCLUSION

Langhaugh Mill Complex

Historical sources show that Langhaugh Mill was destroyed by a fire and only its weaving sheds survive today. These have been greatly modified to suit the requirements of small firms that took over the complex in the later 20th century. The standing building survey has shown that the core block of the Langhaugh Mills weaving shed lies at the heart of the complex. Although its interior has been heavily compartmentalised, some original features still survive. These include stone-built load-bearing walls and a series of cast iron columns that still support the treble-span A-frame roof. The columns also provide evidence for the transmission routes of belt-driven machinery housed within the weaving shed.

The two storey house (Building 6) is contemporary with Buildings 3 and 5 and was probably built to house the mill manager in the late 19th century.

Buildings 1 and 2 are both of 20th century date and relate to the establishment of the later textile weaving episode at the site from the late 1970s onwards. The large purpose-built factory and its ancillary plant rooms are of no historical or architectural interest.

Stow Station House

The exterior of Stow Station house is largely unaltered externally since it was first opened in 1848 apart from minor blocking work and exterior 20th century additions. The interior has been extensively refurbished and modernised in the 20th century.

Torwoodlee Gate Piers

The survey has shown that the gate piers are probably of early 19th century in date and were hewn from single blocks of sandstone. The gate piers are located on a minor trackway leading from the north to the Torwoodlee mansion house.

7. RECOMMENDATIONS

The Level 1 and 2 surveys undertaken at Langhaugh Mill Complex, Stow Station house and Torwoodlee Gate Piers have recorded the layout and character of each site respectively.

An entry in *Discovery and Excavation in Scotland* is considered sufficient to disseminate the results of the survey to a wider public audience.

It is recommended that no further archaeological survey work is required prior to their demolition or alteration.

8. REFERENCES

8.1 Bibliographic

English Heritage 2006 Recording *Historic Buildings. A Descriptive Specification*, 3rd edition. London.

Evans, D (1985) 'Practical Plans, Stow and Belses', *Practical Model Railways*, vol. June 1985 Page(s): 30-33 'Galashiels a Modern History' 1983 Galashiels History Committee .

Jones C and Neighbour T 2010 'Borders Railway Project: Cultural Heritage Management Plan' Version 5 Rev A

Ordnance Survey Name Book Object Name Books of the Ordnance Survey. Book No. 66, 22, 55. Held at NMRS.

8.2 Maps

Langhaugh Mill

Ordnance Survey 1899 Second Edition Selkirkshire Sheet 8.2 25" to the mile

Ordnance Survey 1932 Second Edition Selkirkshire Sheet 8.2 25" to the mile

Ordnance Survey 1962 Plan NT 4835 & 4935 25" to the mile

Ordnance Survey 1970 NT 4935 NE 1:1250

Ordnance Survey 1981 NT 4935 NE 1:1250

Ordnance Survey 1988 NT 4935 NE 1:1250

Stow Station

Ordnance Survey 1854 First Edition Edinburghshire Sheet XXIV 25" to the mile

Ordnance Survey 1907 Third Edition Edinburghshire Sheet XXIII.25" to the mile

On-line sources

<http://www.railbrit.co.uk/location.php?loc=Stow>.
<http://www.kosmoid.net/portobello/waverley>

APPENDIX 1: LANGHAUGH MILL COMPLEX, PHOTOGRAPHIC REGISTER

Shot No	Description	Facing
001-004	Building 2, Unit 1 office general interior shots	N, E, S & W
005-008	Building 2, Unit 2 office general interior shots	N, E, S & W
009-0012	Building 2, Unit 3 office general interior shots	N, E, S & W
013	Building 2, Unit 4 doorway to hallway	S
014	Building 2, Unit 4 cupboard under stairs	N
015-018	Building 2, Unit 5 office general interior shots	N, E, S & W
019	Building 2, Unit 6 gents toilet interior	S
020	Building 2, Unit 6 ladies toilet interior	S
021	Building 2, Unit 7 cupboard interior	N
022-024	Building 2 Unit 8 kitchen interior	E, N & W
025-026	Building 2, Unit 9 passage interior	W & E
027-028	Building 2, Unit 10 Stairs	N & S
029	Building 2, Unit 11 vestibule outside Unit 12	E
030-034	Building 2, Unit 12 office interior	N, E, S & W
035-037	Building 2, Unit 13 office interior	N, S & E
038-039	Building 2, Unit 14 hallway	N & S
040-043	Building 2, Unit 15 office interior	N, E, W & S
044	Building 2, Unit 16 sink and cupboard	E
045-047	Building 2, Unit 17 toilet and shower	NE, SE, & SW
048-051	Building 2, Unit 18 attic room	NE, E, SE, W
052-053	Building 2, Unit 19 attic room and shelving	N & S
054-057	Building 2, Unit 20 attic interior panelling and exposed sarking boards	N, S, W & E
058	Building 2, Unit 20 sarking and roof truss	W
059	Building 3, Unit 21 vestibule	N
060	Building 3, Unit 22 passage	W
061	Building 3, Unit 23 office interior	N
062-063	Building 3, Unit 25 workshop interior	W & N
064-065	Building 3, Unit 26 printing room interior	N & S
066	Building 3, Unit 27 workshop/cutting room	E
067-068	Building 3, Unit 28 interior	N & S
069	Building 3, Unit 28 column detail	W
070	Building 3, Unit 28 column detail	SW
071	Building 3, Unit 28 column head detail	W
072	Building 3, Unit 29 wall exterior	W
073-074	Building 3, Unit 29 interior detail and columns	N & SW
075	Building 3, Unit 30 office and store	S
076-081	Building 3, Unit 31 passage interior, walls and roof detail	N & S, SW & oblique
082-084	Building 3, Unit 33 joiners shop interior	W, SW & W
085	Building 3, Unit 36 disused toilet block	S
086-087	Building 3, Unit 35 stores interior	E & W
088	Building 3, Unit 34 toilet block interior	S
089-092	Building 4, Unit 37 ground floor office interior	N, E, S & W
093-094	Building 4, Unit 38 office interior	N & S
095	Building 4, Unit 38 exposed painted mill wall	W
096	Building 4, Unit 39 boxed in staircase	W
097-099	Building 4, Unit 40 office interior	N, W & N
100-104	Building 4, Unit 41 workshop and columns	N, W & S
105-106	Building 4, Unit 41 A-frame trusses and roof lights	N
107	Building 4, Unit 42 north-facing doorway	S
108	Building 4, Unit 42 doorway at north end	N
109	Building 4, Unit 43, workshop	W

110-111	Building 4, Unit 45, first floor office	N & S
112	Building 4, Unit 46 door to photocopy room	S
113-114	Building 4, Unit 47 first floor office with exposed roof trusses	N & S
115	Building 4, Unit 48 featureless office interior	N
116-117	Building 4, Unit 49 office with central partition	N
118-119	Building 2, exterior gable and frontage	W
120-121	Building 2, exterior gable and frontage	E
122	Building 2, quoin detail on gable	E
123-128	Building 2, overlapping shots of the west-facing gable and office	E
129-139	Building 2, overlapping shots of Fjordhus workshop with Building 2 behind	W
140	Building 4, office block at south side	NW
141-164	Building 4, east-facing elevation, overlapping shots from south to north	W
165-172	Building 2, overlapping shots of the west-facing gable	E
173-179	Building 2, overlapping shots of the east-facing gable	W
180	Building 2, north-facing elevation, lean-to roof raggle on the east-facing gable	W
181-209	Building 2, overlapping shots of the north-facing elevation taken from east to west	S
210-212	Building 5, Unit 1 north-facing elevation	SE, N & SW
213-227	Building 3, north-facing exterior elevation, overlapping shots from east to west	S
228-232	Building 3, north-facing exterior elevation, overlapping shots from west to east	S
233	Building 6, interior south-facing elevation	N
234	Building 6, interior west-facing gable wall	E
235	Building 6, interior steel-framed roof supports	E
236	Building 6, interior north-facing elevation	S
237-238	Building 6, weaving machinery on factory floor	N & S
239	Building 6, doorway on south-facing elevation	N
240	Building 6, factory floor, general shot	E
241-242	Building 6, east-facing mezzanine wall	N
243	Building 6, mezzanine storage area	NW
244	Building 6, steel-frame roof support	E
245	Building 6, looking south on the factory floor	S
246	Building 6, stores area	N
247-248	Building 6, workshop interior	S & E
249	Building 6, office passage	N
250-251	Building 6, exterior north-facing elevation	SSE
252-253	Building 6, exterior north-facing elevation and gable	SSW
254-255	Building 6, east-facing gable	W
256-257	Building 6, west-facing gable	SE
258-259	Building 6, Unit 4 concrete fuel tower	E
260	Building 6 Unit 3, north-facing elevation	W
261	Building 6, Unit 3, north-facing elevation	SE
262-263	Building 6, Units 2 & 3, north-facing elevation	S & SSE
264-265	Building 5, Unit 1 east-facing elevation	W
266	Building 5, Unit 1 north-facing elevation	N
267	Building 5, Unit 4, south-facing elevation	N
268	Building 6, south-facing elevation	E
269	Building 5, Unit 1, south-facing elevation	N
270	Building 2, south-facing elevation, ground floor	N
271-272	Building 2, south-facing elevation and gable	NNE
273	Building 2, Fjordhus workshops exterior	E
274	Building 2, Fjordhus workshops exterior	E
275	Building 2, south-facing elevation fenestration	N
276-277	Building 2, south-facing elevation of the Fjordhus modern office	N

278-279	Building 1, exterior east-facing elevation	W
280	Building 2, Fjordhus carpenters workshops	NE
281	Building 2, Fjordhus wood stores	E
282	Building 2, Fjordhus wood stores roof detail	Oblique
283	Building 2, Fjordhus joiners office	S
284	Building 2, Fjordhus carpenters workshop, east-facing doorway	W
285-286	Building 2, south-facing ground floor blocked windows	N
287-288	Building 1, south-facing gable	N
289	Building 2 Fjordhus workshops, general view	E
290-237	Building 3, overlapping shots of the south-facing elevation from west to east	N
238-239	Building 4, west-facing elevation of the toilet block	E
330	Building 4, south-facing elevation of the toilet block	N
331	Building 4, office block exterior south and east-facing elevations	NW
332	Building 4, alley between Building 5	W
333-342	Building 4, east-facing elevation, overlapping shots from south to north	W
343-344	Building 3, west-facing elevation	S
345-347	Building 3, west-facing elevation	N
348	Building 3, droved quoins on SW corner of the building	W
349	Building 3, west-facing elevation and Fjordus workshop walls	S
350-351	Building 4, north-facing elevation, general shot	S
352-386	Building 4, overlapping shots of the north-facing elevations, gable walls	S
387-389	Building 1, north-facing gable	S
390-392	Building 1, west-facing elevation	E

APPENDIX 2: STOW STATION HOUSE: PHOTOGRAPHIC REGISTER

Shot No	Description	Facing
1	Unit 1	NE
2	Unit 1	E
3	Unit 1	S
4	Unit 2	N
5	Unit 2	N
6	Unit 2	S
7	Unit 3	N
8	Unit 3	S
9	Unit 4	W
10	Unit 5	W
11	Unit 6	S
12	Unit 6	N
13	Unit 7	S
14	Unit 8	S
15	Unit 8	W
16-45	Exterior south facing elevation	S
46	Detail of blocked main entrance	S
47-48	General view	SW
49-86	Exterior west facing elevation	W
87	Exterior north facing elevation	NW
88	Exterior north facing elevation	NE
89	N/A	
90	General view of east facing exterior gable	NE
91-128	Exterior east facing elevation	E
129-135	Copies of photos of Stow station in use.	
136	Unit 10	S
137	Unit 10	NW
138	Unit 11	NW
139	Unit 11	NE
140	Unit 12	NE
141	Unit 12	E
142	Unit 12	SW
143	Unit 13	SE
144	Unit 13	SW
145	Unit 14	N
146	Unit 15	S
147	Unit 16	E
148	Unit 17	N
149	Unit 18	S
150 - 151	View of yard	N
152	Unit 18	W
153	View of yard	S
154	Detail of lean-to inside yard	N
155-192	Exterior north facing elevation	N
193	Unit 9	S
194-195	Unit 9 detail of coal chute	W

APPENDIX 3: TORWOODLEE GATE PIERS: PHOTOGRAPHIC REGISTER

Shot No	Description	Facing
001	Torwoodlee gate piers, general view of the south side	E
002	Torwoodlee gate piers, general view of the south side	E
003	Torwoodlee gate piers, general view of the south side	E
004	Torwoodlee gate piers, general view of the south side	E
005	Torwoodlee gate piers, general view of the coping stone	SE
006	Torwoodlee gate piers, general view of the coping stone	E
007-009	Torwoodlee gate piers, general view of the coping stone	W
010	Torwoodlee gate piers, general view of the coping stone	W
011-012	Torwoodlee gate piers, general view of the coping stone	W
013-014	Torwoodlee gate piers, iron fixing bolt	W
015-017	Torwoodlee gate piers, general view from a distance	W
018-021	Torwoodlee gate piers, general view of pier and gate	SE
022-024	Torwoodlee gate piers, general view	E
025-030	Torwoodlee gate piers, general view from a distance	W
031-032	Torwoodlee gate piers, general view of pedestrian gate	S

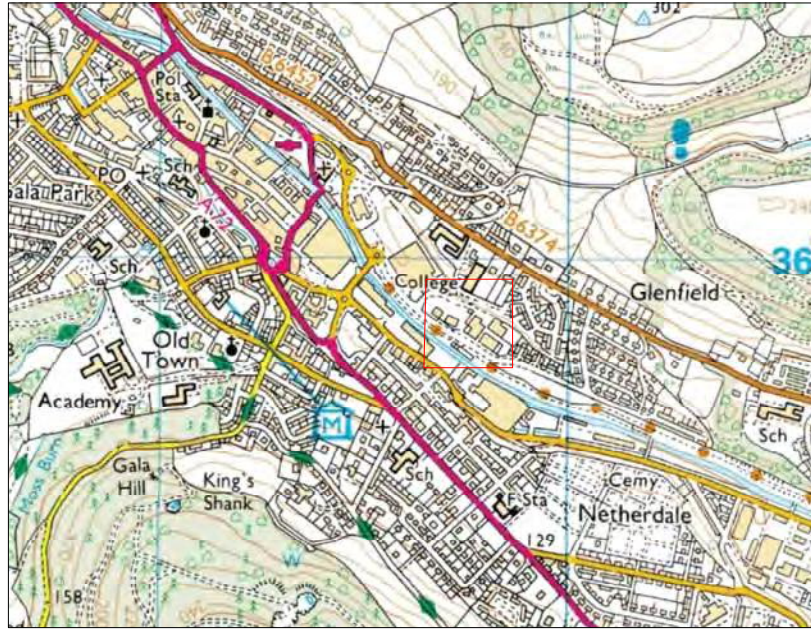


Fig. 1a Location of Langhaugh Mill

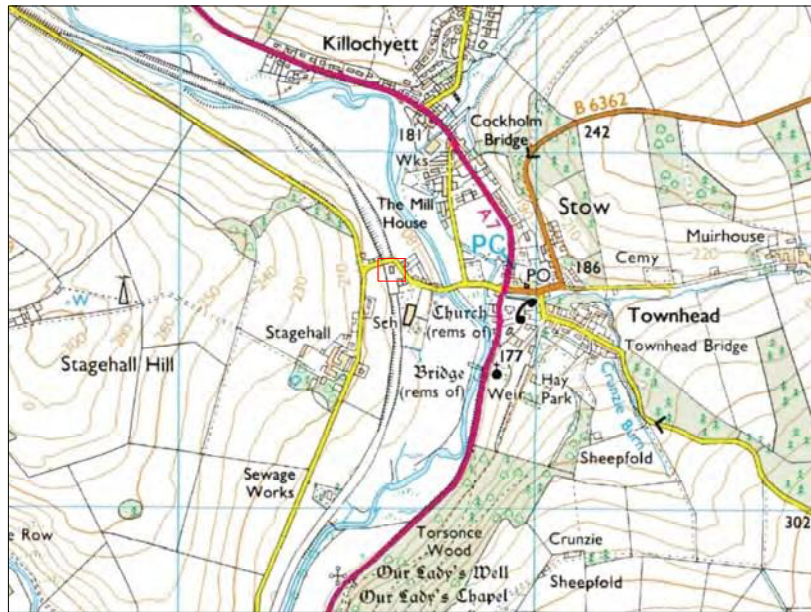


Fig. 1b Location of Stow Station House

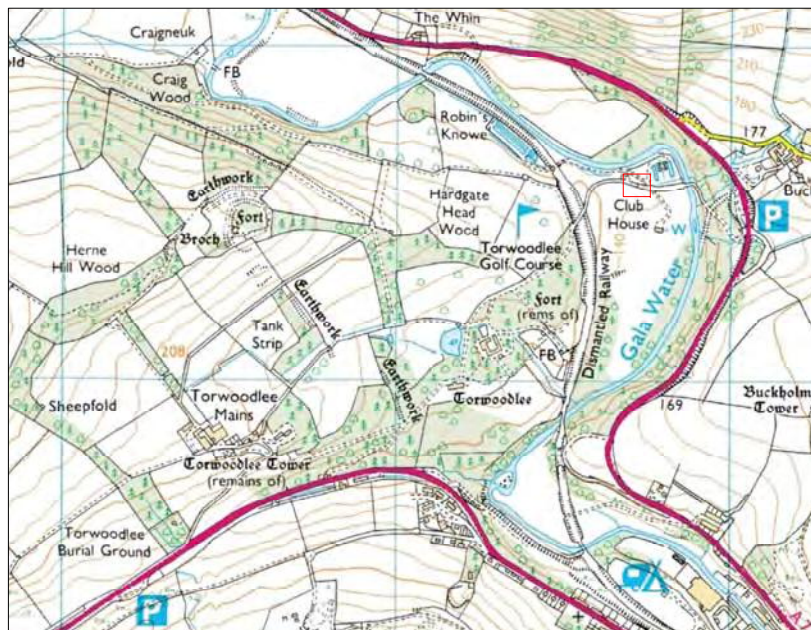


Fig. 1c Location of Torwoodlee Pillars



Fig. 1d Plan of Langhaugh Mill Complex



Key:

CFA ARCHAEOLOGY LTD
 The Old Engine House
 Eskmills Park
 Musselburgh
 East Lothian, EH21 7PQ
 t: 0131 273 4380
 f: 0131 273 4381
 e: info@cfa-archaeology.co.uk
 w: www.cfa-archaeology.co.uk

Fig. No: 1a-d Revision: A

Title:
 General location map of sites
 and plan of Langhaugh Mill

Project:
 Langhaugh Mill,
 Galasheils
 Standing Building Survey

Client:
 EDM Ltd per Transport
 Scotland

Scale at A3:
 Fig. 1e 1:1000

Drawn by: LW Checked: LW Report No: 1981

Key:

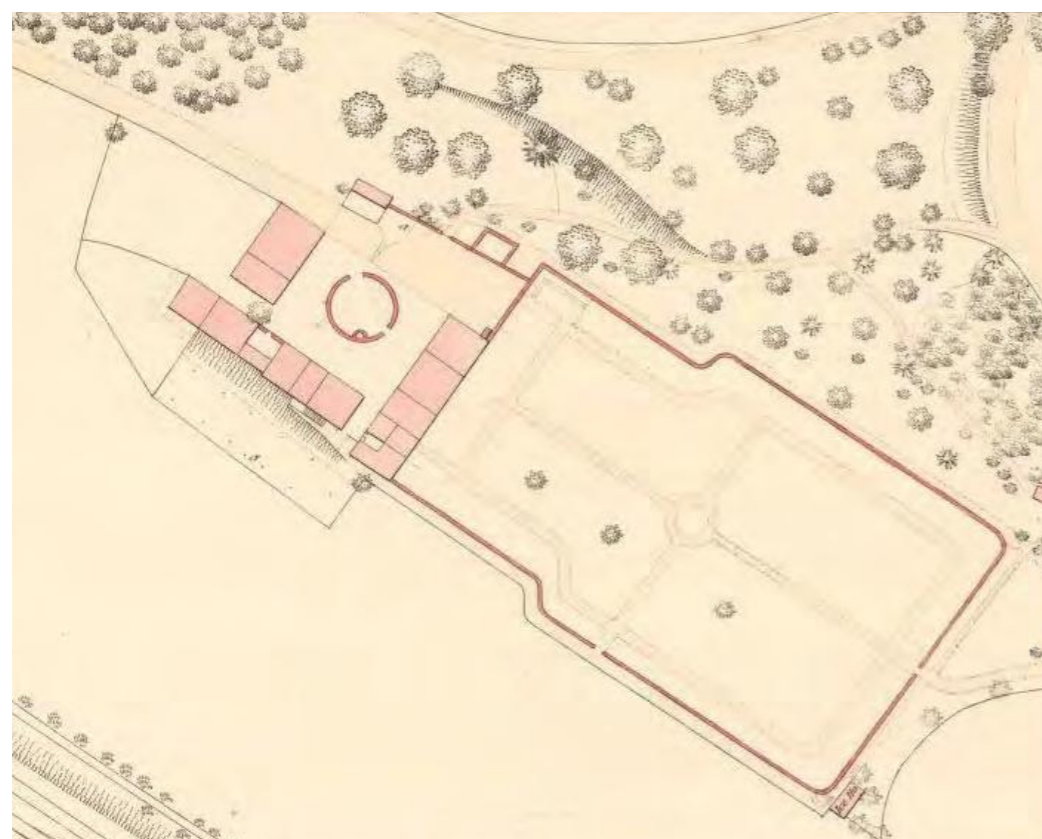


Fig. 2a - First Edition Ordnance Survey 1858



Fig. 2b - Second Edition Ordnance Survey 1899

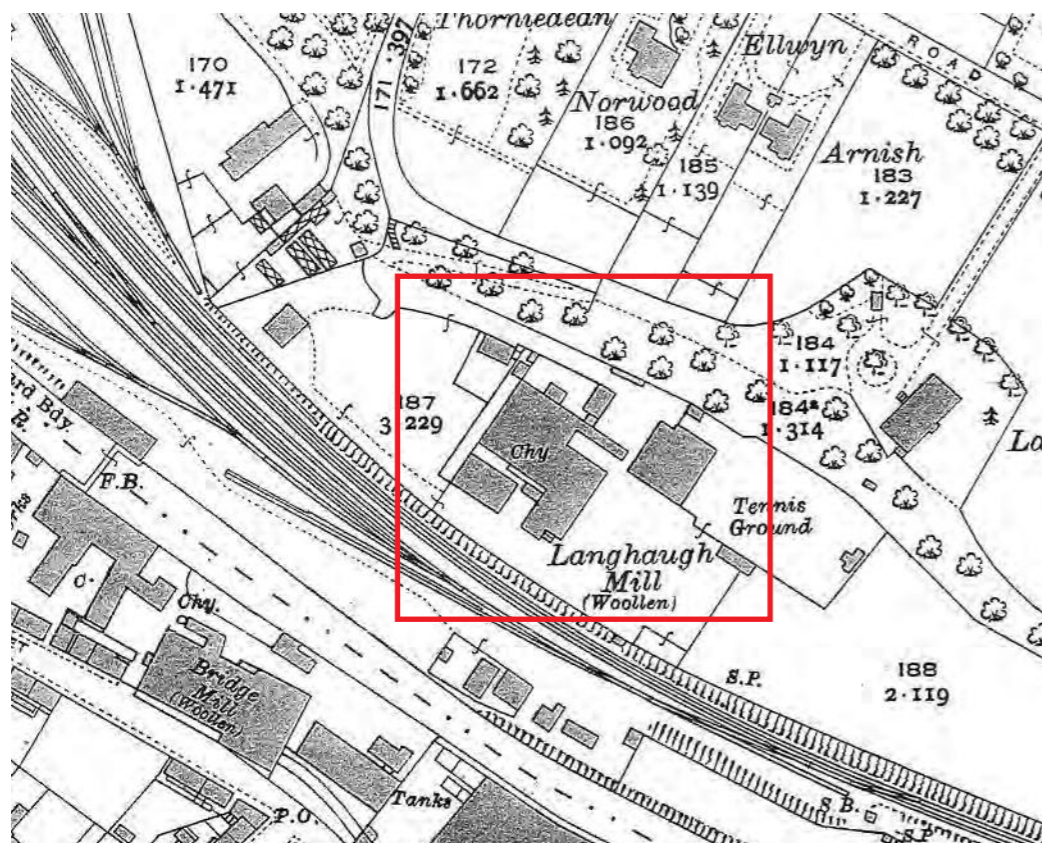


Fig. 2c - Ordnance Survey 1932

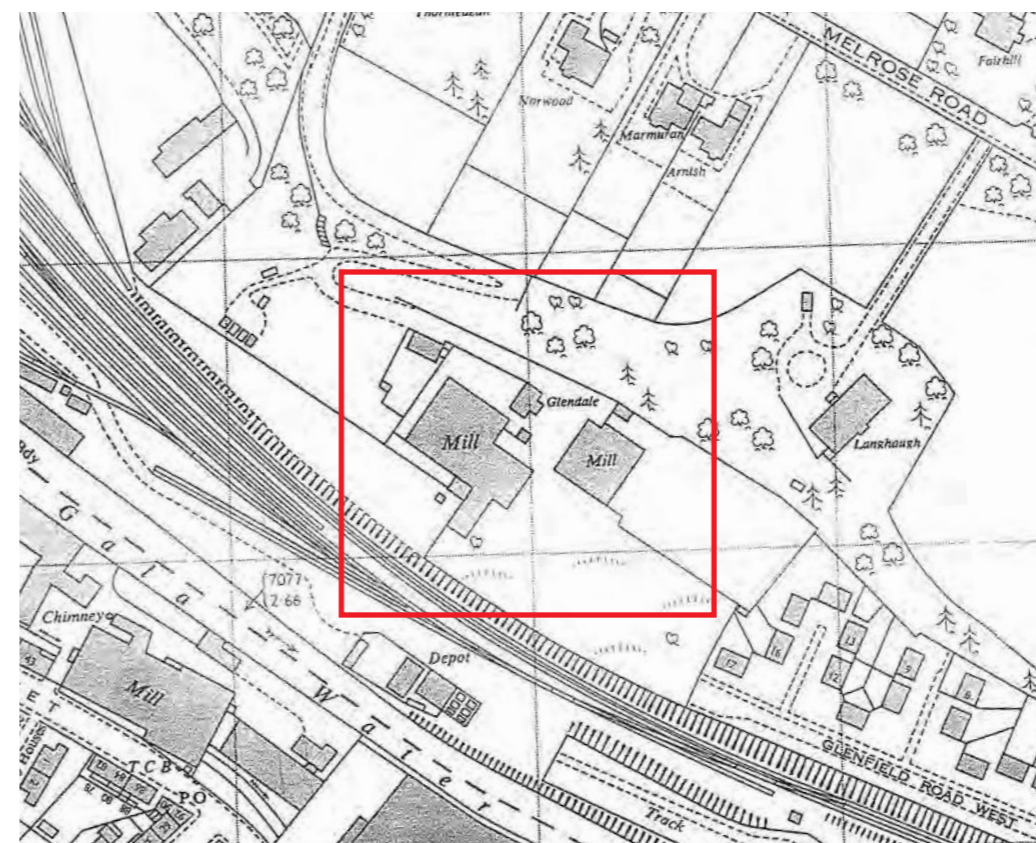


Fig. 2d - Ordnance Survey 1978





Key:

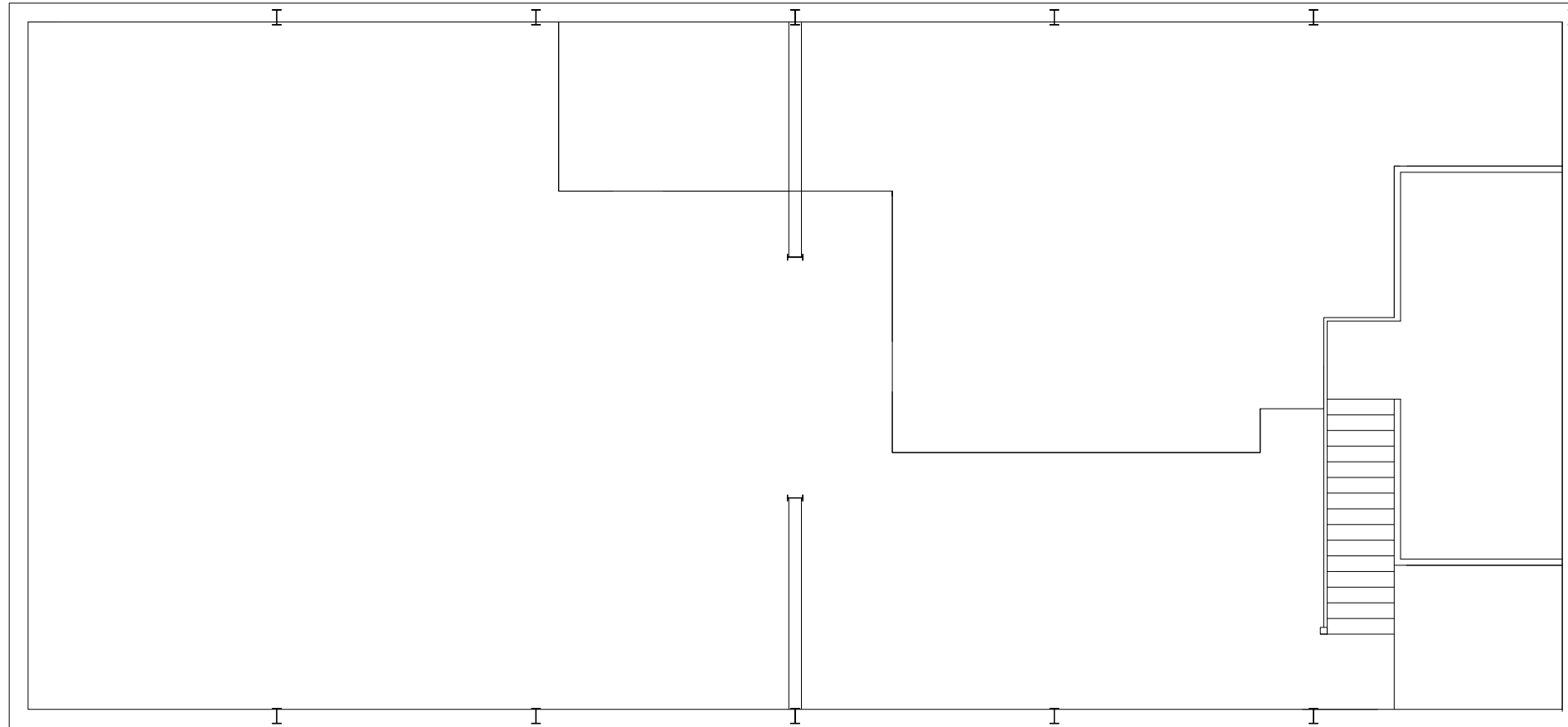


Fig. 3b - First Floor Plan

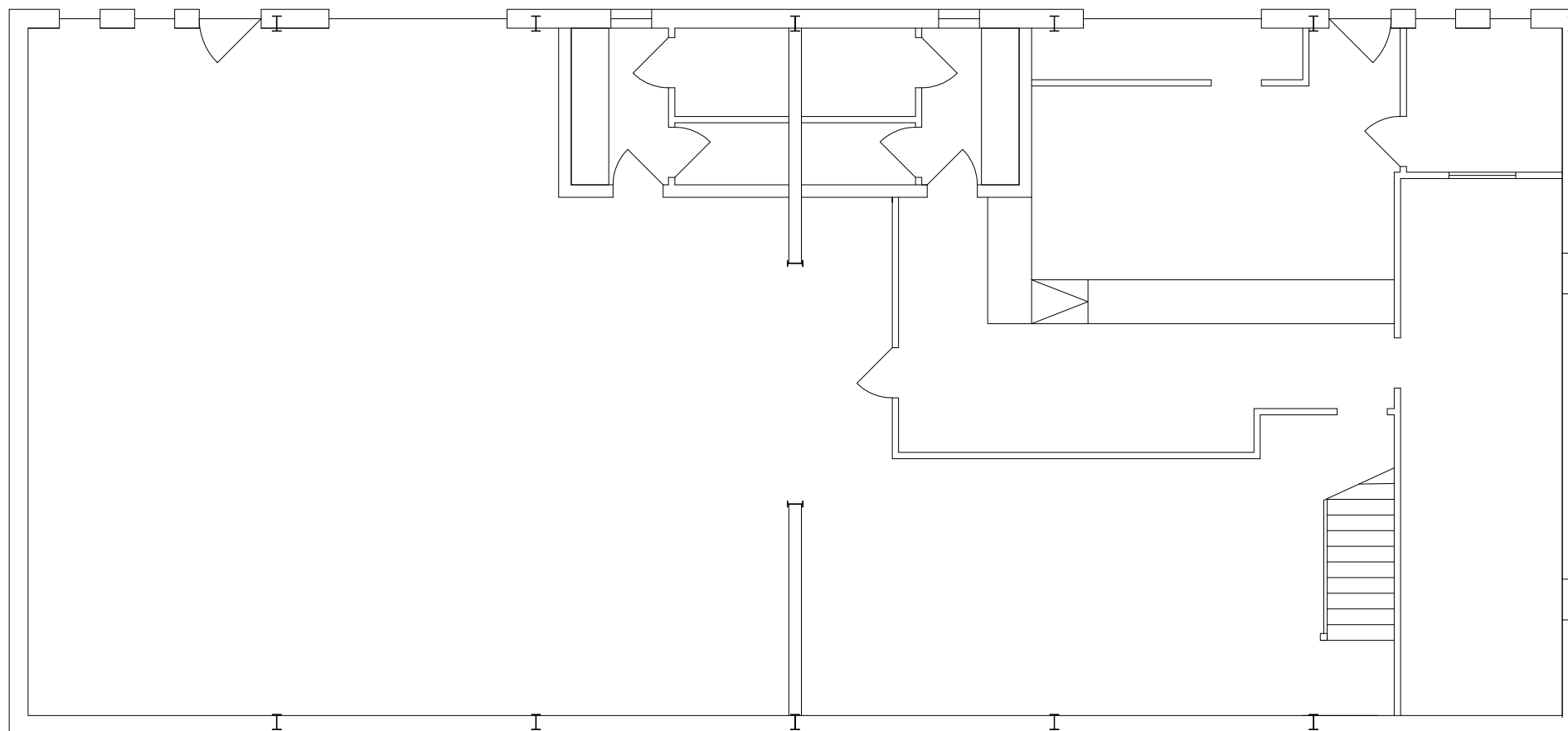


Fig. 3a - Ground Floor Plan

CFA ARCHAEOLOGY LTD
 The Old Engine House
 Eskmills Park
 Musselburgh
 East Lothian, EH21 7PQ
 t: 0131 273 4380
 f: 0131 273 4381
 e: info@cfa-archaeology.co.uk
 w: www.cfa-archaeology.co.uk

Fig. No: 3a-b Revision: A

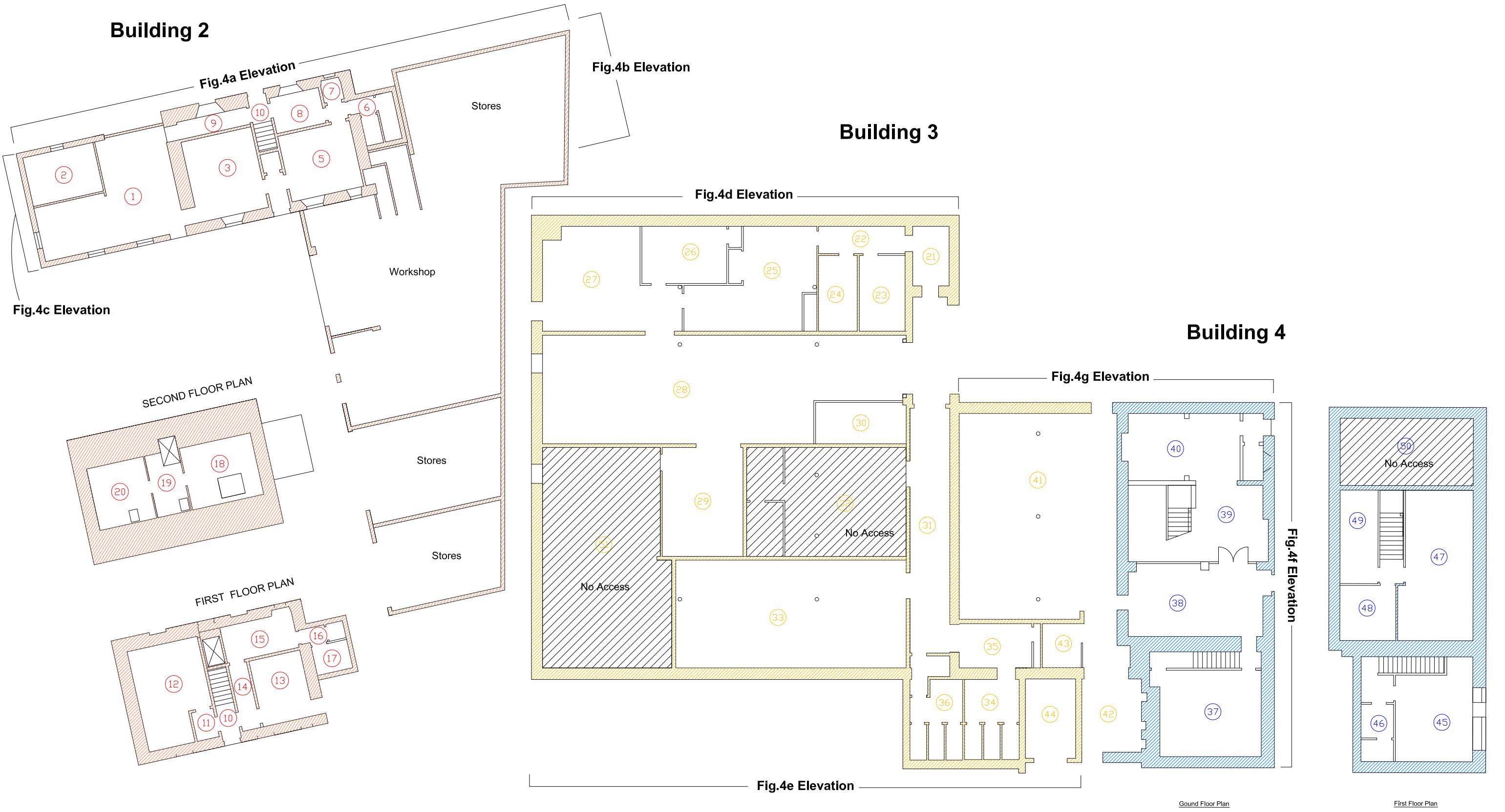
Title:
Building 1 William Wilson
Electrical. Ground and first
floor plan

Project:
Langhugh Mill, Galashiels
Standing Building Survey



Client:
EDM Ltd per Transport
Scotland

Scale at A3:
1:100





Building 2
 Building 3
 Building 4

Fig. No: 4	Revision: A	Client: EDM Ltd per Transport Scotland
Title: Combined Floor Plans, Building 2-4		
Project: Langhaugh Mill, Galashiels Standing Building Survey		
Scale at A3: 1:100		
Drawn by: LW	Checked: LW	Report No: 1981

CFA ARCHAEOLOGY LTD
 The Old Engine House
 Eskmills Park
 Musselburgh
 East Lothian, EH21 7PQ
 t: 0131 273 4380
 f: 0131 273 4381
 e: info@cfa-archaeology.co.uk
 w: www.cfa-archaeology.co.uk



Key:

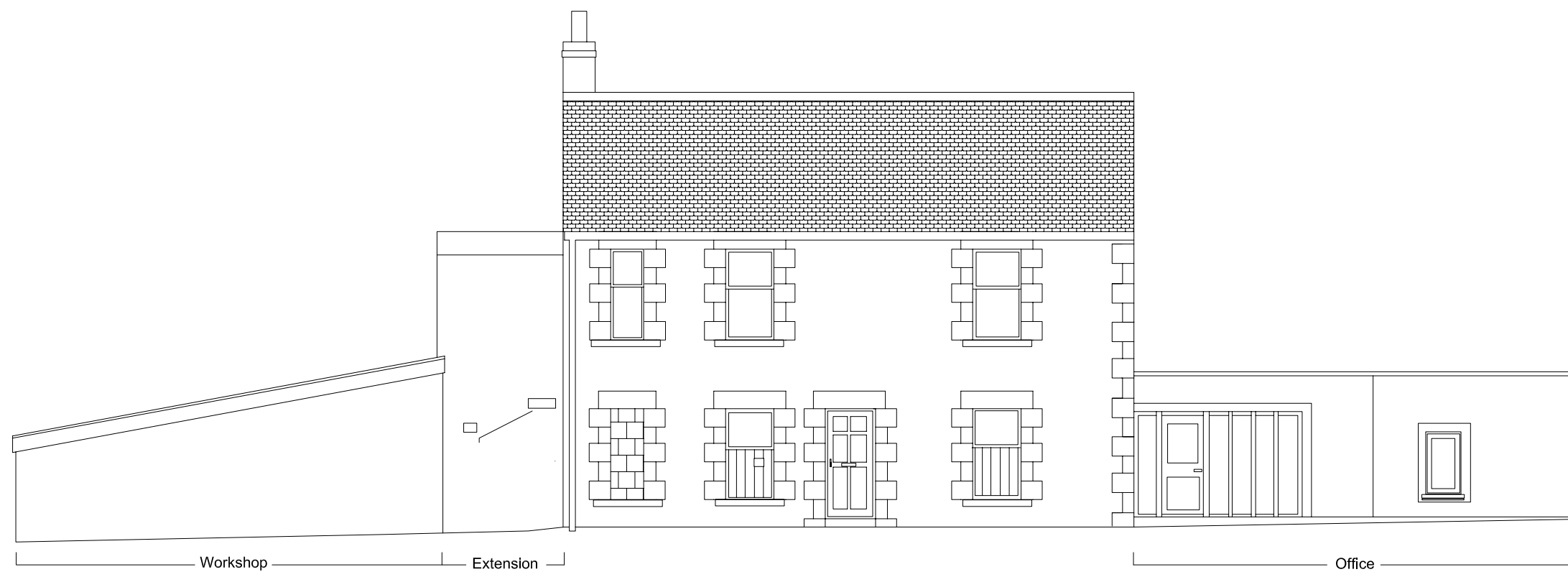


Fig 4a - Building 2 North-facing elevation

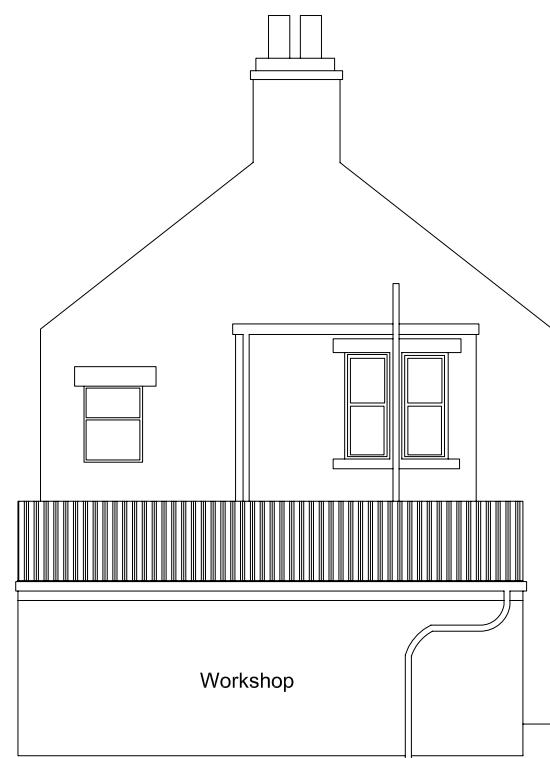


Fig 4b - Building 2 East-facing elevation

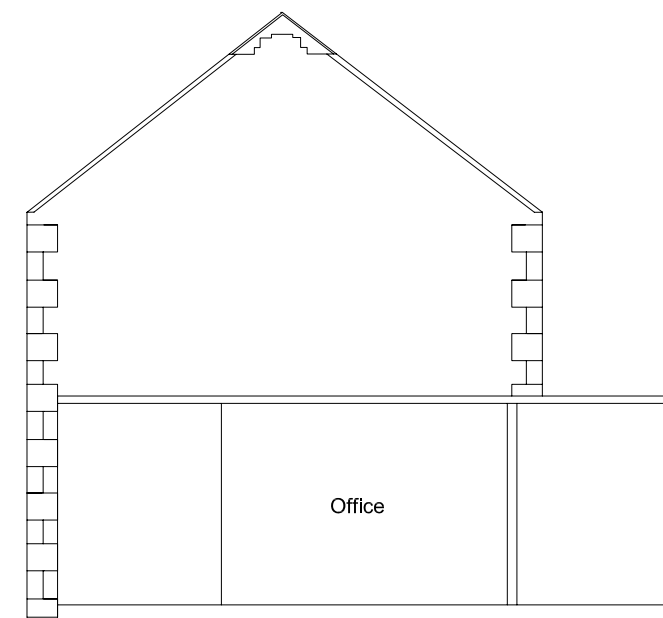


Fig 4c - Building 2 West-facing elevation

CFA ARCHAEOLOGY LTD
 The Old Engine House
 Eskmills Park
 Musselburgh
 East Lothian, EH21 7PQ
 t: 0131 273 4380
 f: 0131 273 4381
 e: info@cfa-archaeology.co.uk
 w: www.cfa-archaeology.co.uk

Fig. No: 4a-c Revision: A

Title:
Building 2 elevations

Project:
**Langhaugh Mill,
 Galashiels
 Standing Building Survey**

Client:
**EDM Ltd per Transport
 Scotland**

Scale at A3:
1:100

Key:

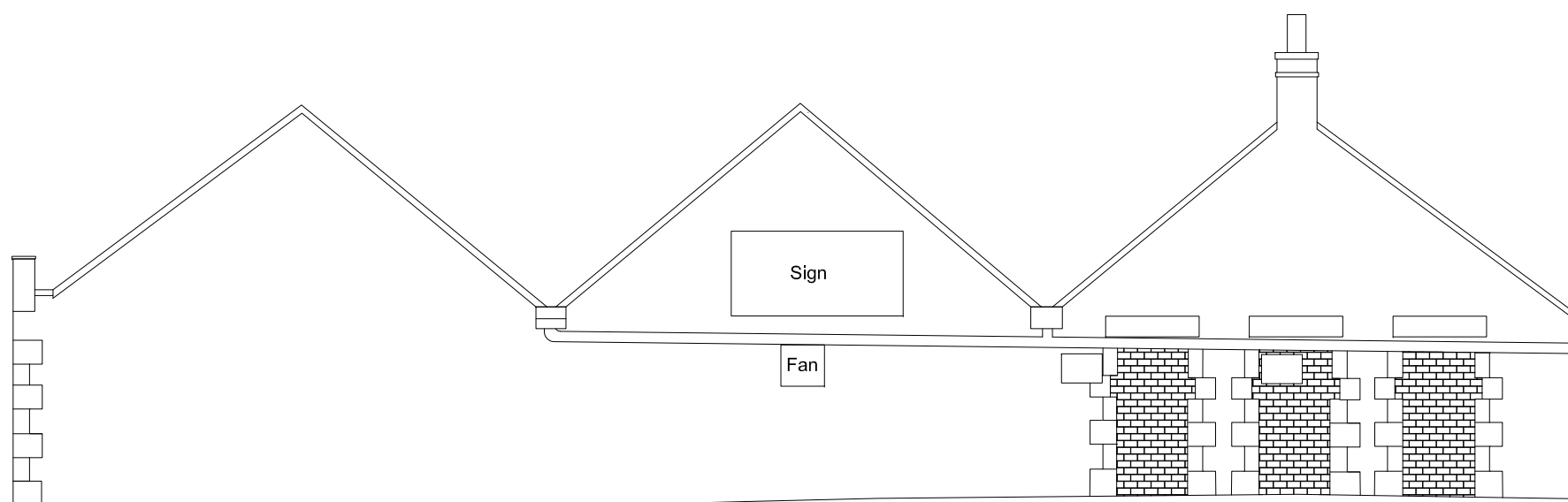


Fig 4d - Building 3 North-facing elevation

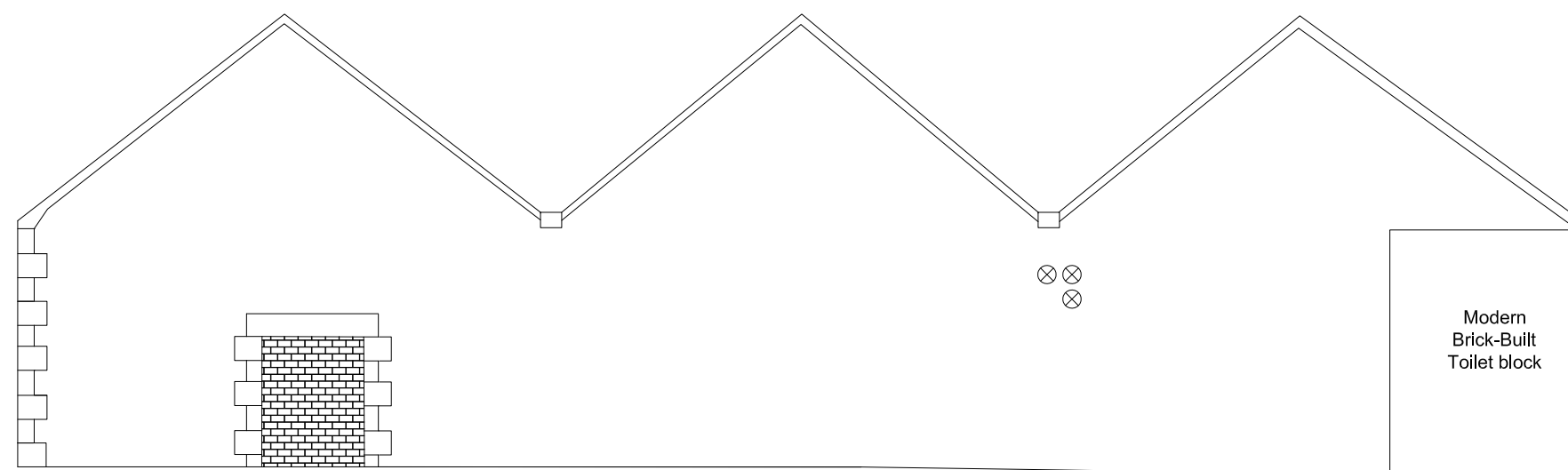


Fig 4e - Building 3 South-facing elevation

Key:

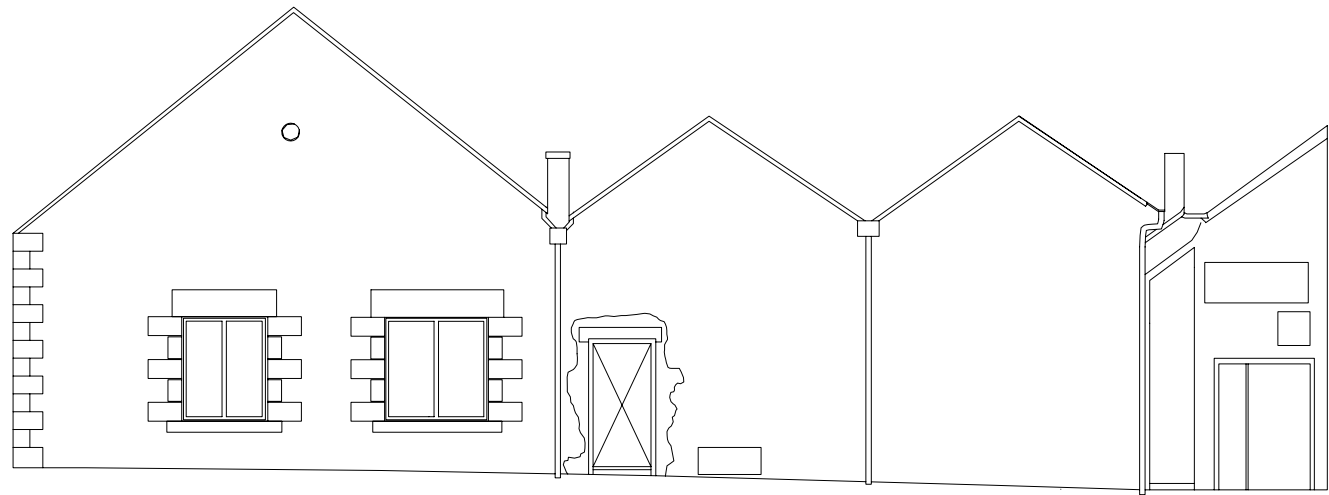


Fig 4g- Building 4 North-facing elevation

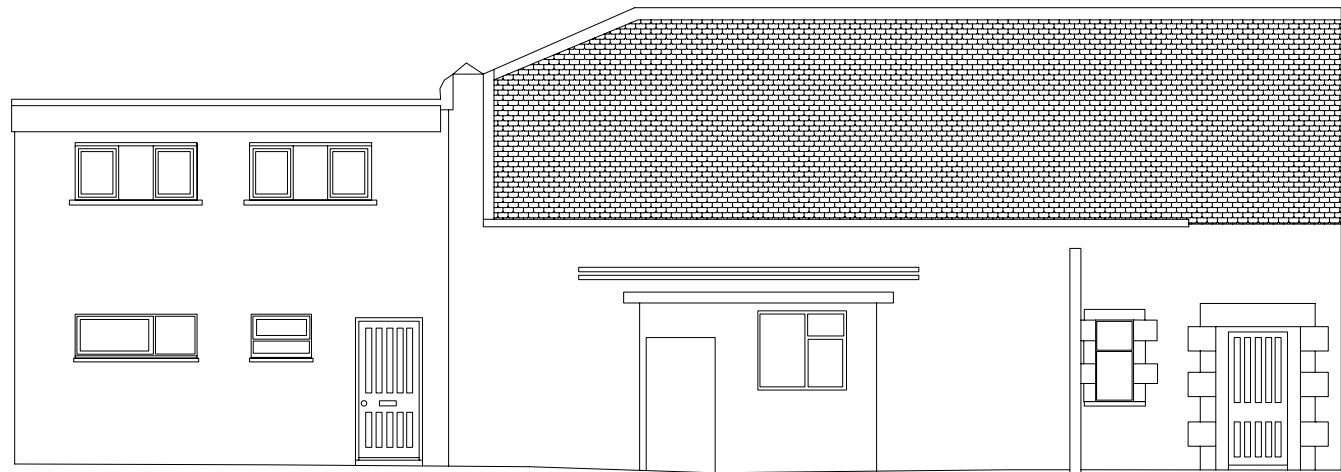


Fig 4f - Building 4 East-facing elevation

CFA ARCHAEOLOGY LTD
 The Old Engine House
 Eskmills Park
 Musselburgh
 East Lothian, EH21 7PQ
 t: 0131 273 4380
 f: 0131 273 4381
 e: info@cfa-archaeology.co.uk
 w: www.cfa-archaeology.co.uk

Fig. No: 4f-g Revision: A

Title:
Building 4 Elevations

Project:
**Langhaugh Mill,
 Galashiels
 Standing Building Survey**

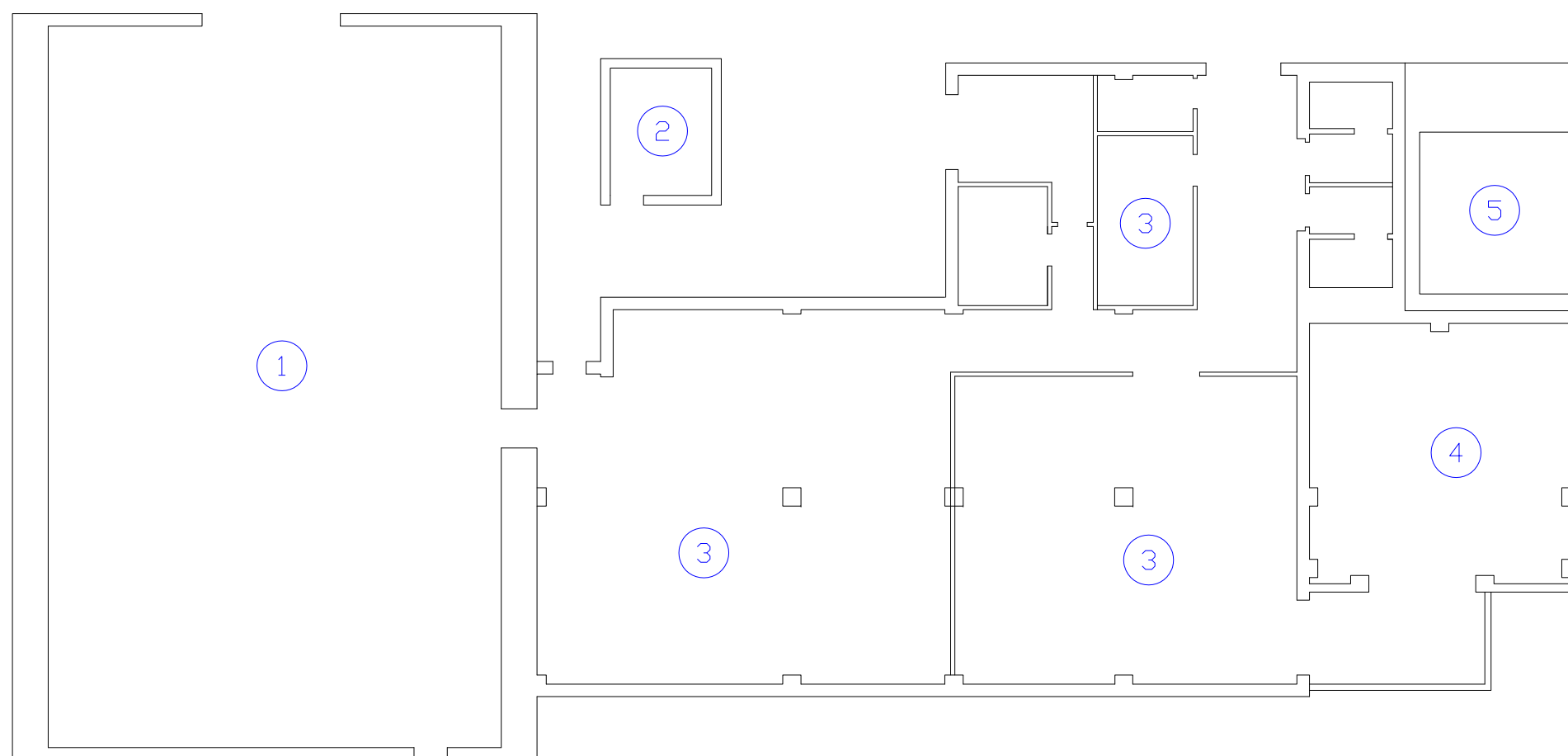
Client:
**EDM Ltd per Transport
 Scotland**

Scale at A3:
1:100



Key:

- ① Corrugated Steel Hut
- ② Engine House (Diesel Generator)
- ③ Main Plant Room
- ④ Shuttered Concrete Building
- ⑤ Fuel Storage Tank



GROUND FLOOR PLAN



Fig. No: 5	Revision: A
------------	-------------

Title:
Building 5 South of Scotland Weavers plant & generator buildings

Project:
Langhugh Mill, Galashiels Standing Building Survey

Client:
EDM Ltd per Transport Scotland

Scale at A3:
1:200



Drawn by: LW	Checked: LW	Report No: 1981
-----------------	----------------	--------------------

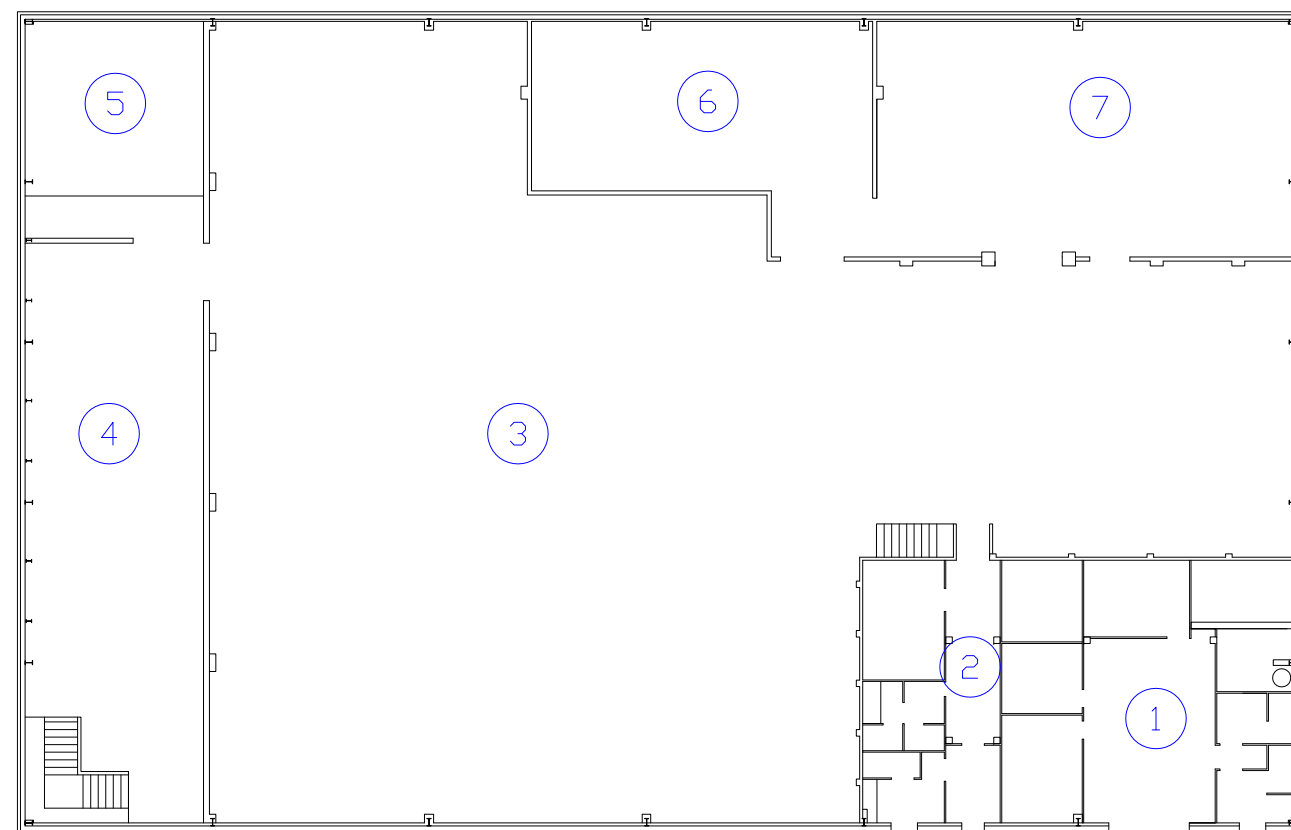


Fig. 6a - Building 6 Ground floor plan

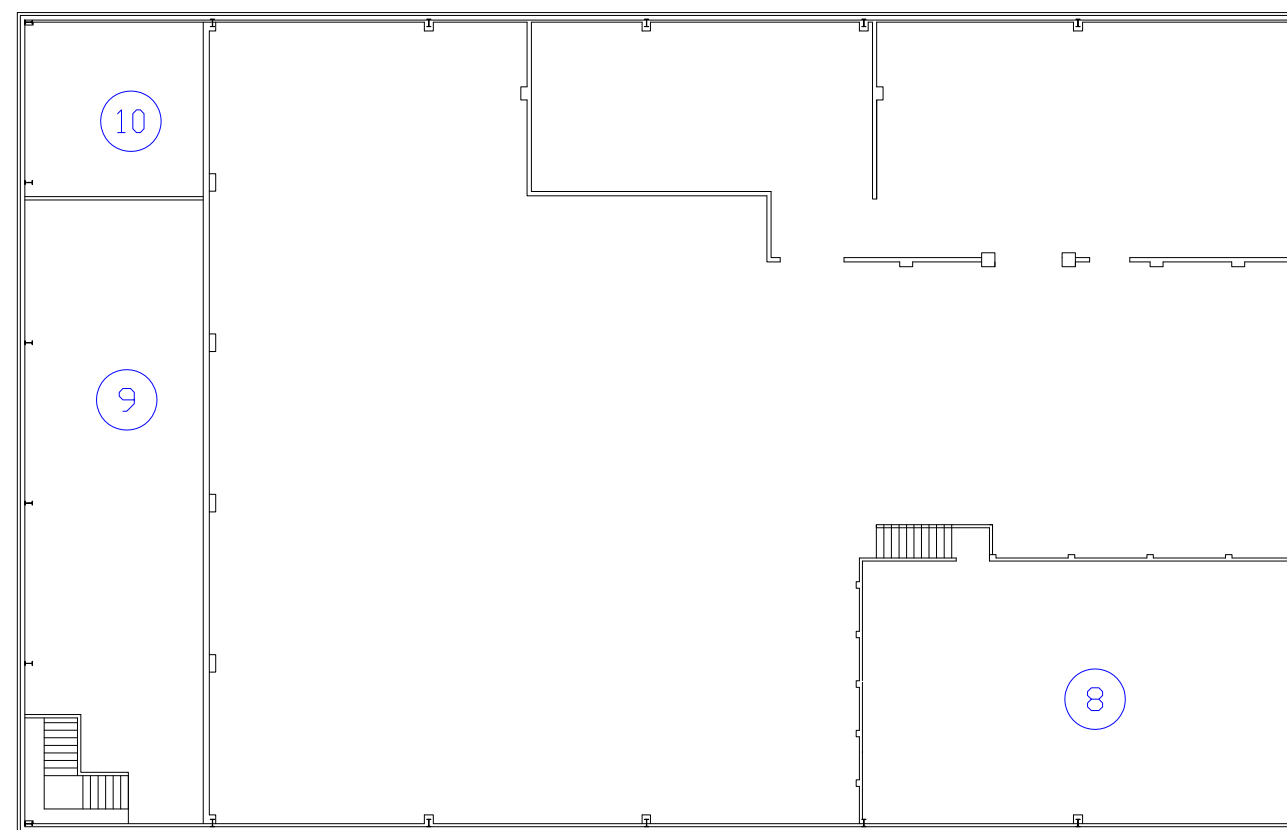


Fig. 6b - Building 6 First floor plan

Key:

- 1 Office Complex
- 2 Office and Mess Complex
- 3 Factory
- 4 Stores
- 5 Stores
- 6 Workshop
- 7 Workshop
- 8 Mezanine floor
- 9 Stores
- 10 Stores



Fig. No: 6a-b Revision: A

Title:
Building 6 South of Scotland
Weaving Shed

Project:
Langhugh Mill, Galashiels
Standing Building Survey

Client:
EDM Ltd per Transport
Scotland

Scale at A3:
1:250

Drawn by: LW Checked: LW Report No: 1981

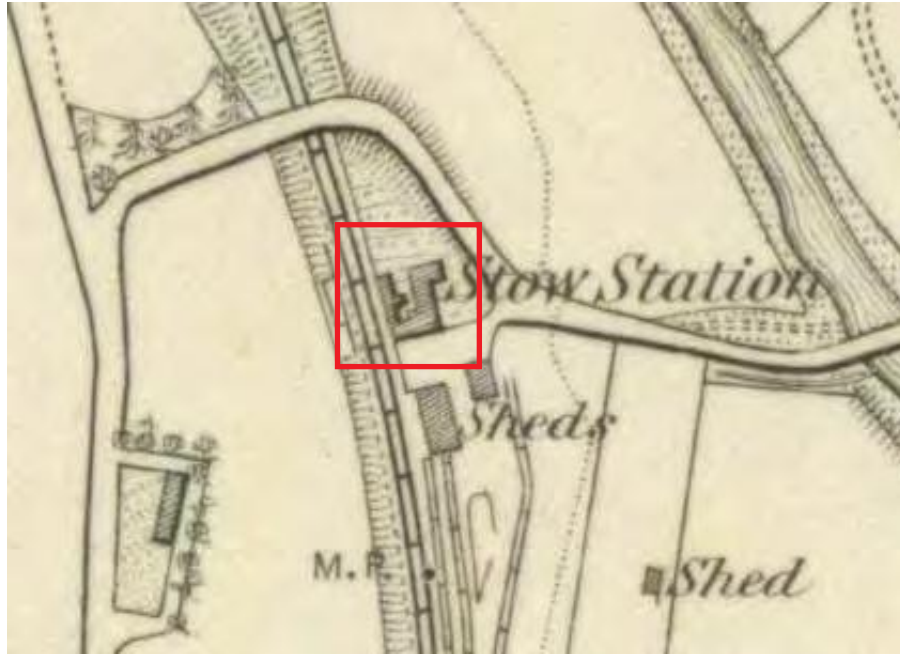


Fig. 7a Extract from 1st Edition map by Ordnance Survey, 1854

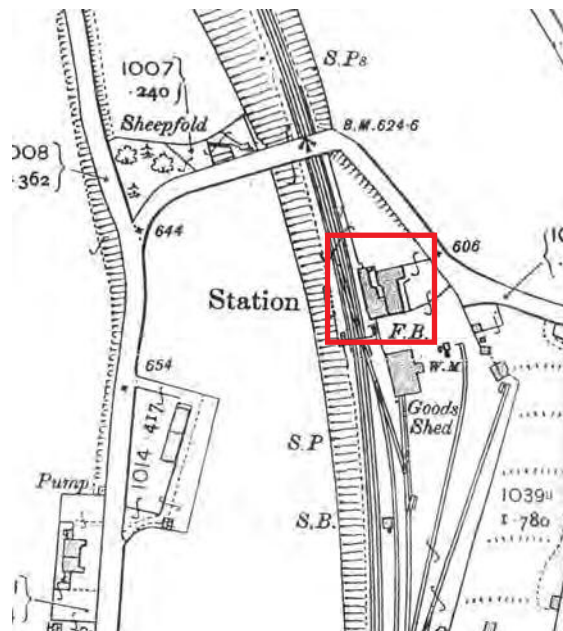





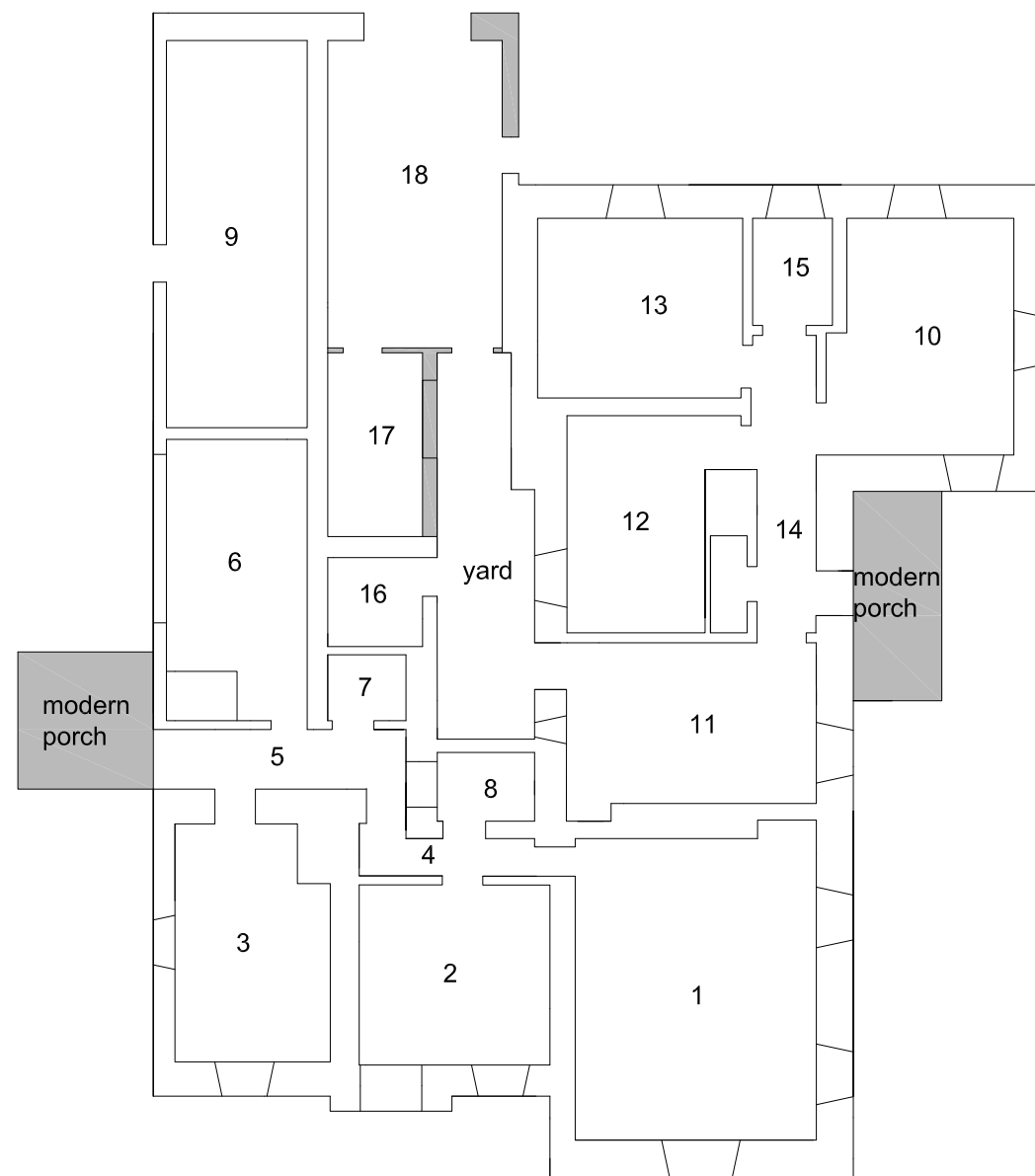
Fig. 7b Extract from 3rd Edition map by Ordnance Survey, 1907

Key:	Fig. No:	7a-b	Revision:	A	Client:	EDM Ltd per Transport Scotland
	Title:	Historical maps of Stow Station House				
Scale:	Project:	Borders Railway Project				
						CFA ARCHAEOLOGY LTD The Old Engine House Eskmills Park Musselburgh East Lothian, EH21 7PQ t: 0131 273 4380 f: 0131 273 4381 e: info@cfa-archaeology.co.uk w: www.cfa-archaeology.co.uk
Drawn by: GC						Checked: LW
Report No: 1981						



Key:

-  Late Victorian
-  20th century



CFA ARCHAEOLOGY LTD
The Old Engine House
Eskmills Park
Musselburgh
East Lothian, EH21 7PQ
t: 0131 273 4380
f: 0131 273 4381
e: info@cfa-archaeology.co.uk
w: www.cfa-archaeology.co.uk

Fig. No: 8 Revision: A

Title:
Stow Station House, Ground Floor Plan

Project:
Borders Railway Project

Client:
EDM Ltd per Transport Scotland

Scale at A3:
1:150



Key:

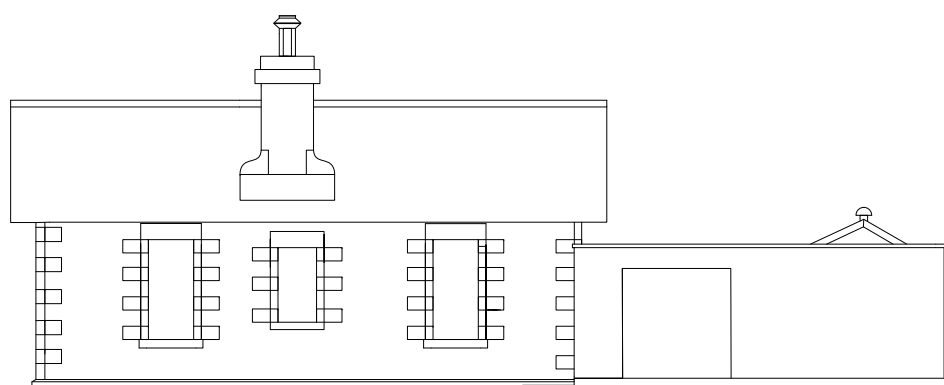


Fig. 9a North-facing elevation

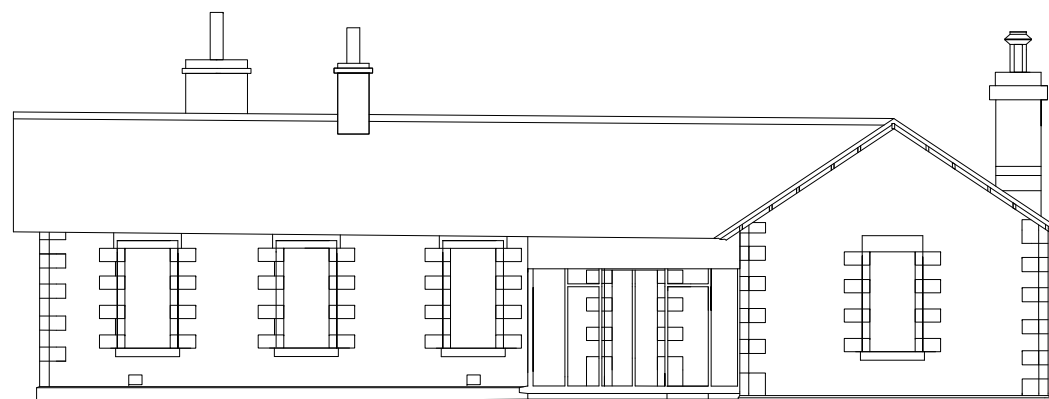


Fig. 9b East-facing elevation

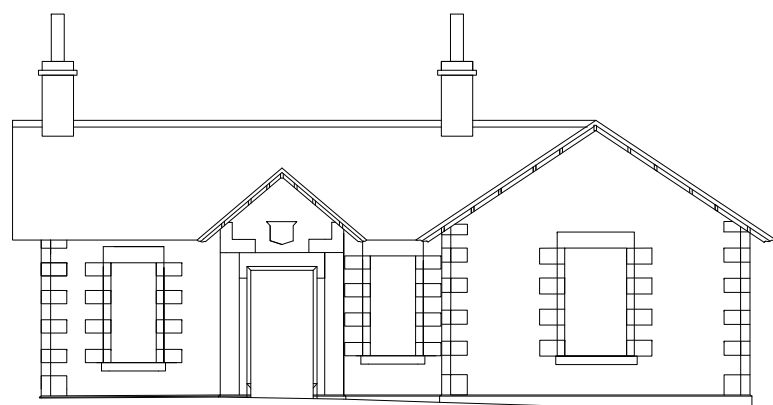


Fig. 9c South-facing elevation

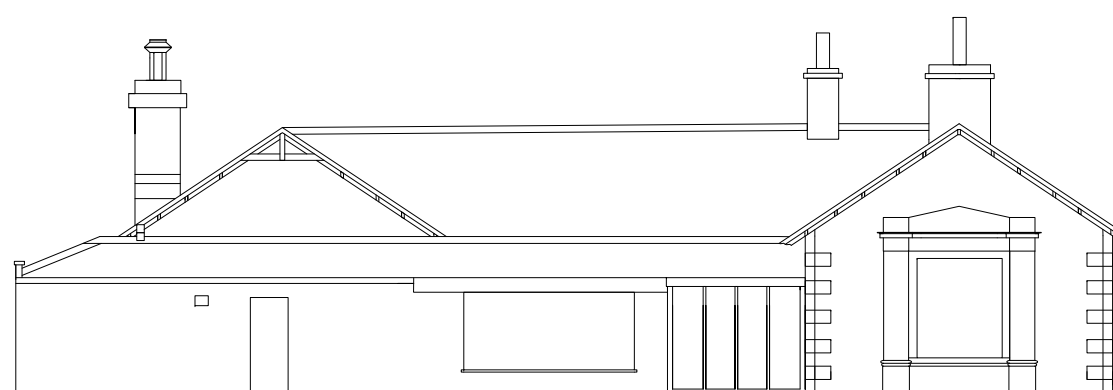


Fig. 9d West-facing elevation including 20th century extension

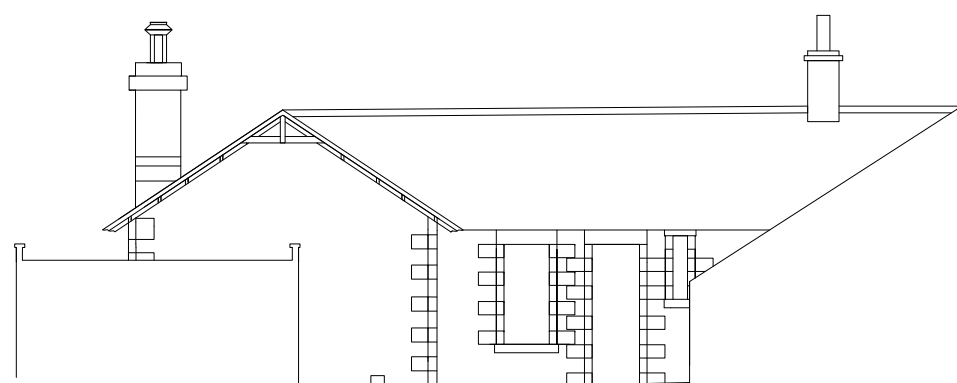


Fig. 9e West-facing original build elevation



Key:



Plate 1 - Building 1, north-facing gable end (William Wilson electrical suppliers)



Plate 2 - Building 1, west-facing (William Wilson electrical suppliers)



Plate 3 - Building 2, north and east-facing elevations of the former Fjordhus Ltd offices



Plate 4 - Building 2, north and west-facing elevations of the former Fjordhus Ltd offices



Plate 5 - Building 2, east-facing gable showing rebuilt stack and bathroom extension



Plate 6 - Building 2, ground floor entrance with adjoining workshops



Plate 7 - Building 2, exposed roof truss and sarking boards in Unit 20



Plate 8 - Building 3, west-facing elevation and the east-facing elevation of Fjordhus workshops



Plate 9 - Building 3, south-facing elevation, fabric detail and blocking work



Plate 10 - Building 3, south-facing elevation, M-shaped roof arrangement and adjoining modern toilet block at east end

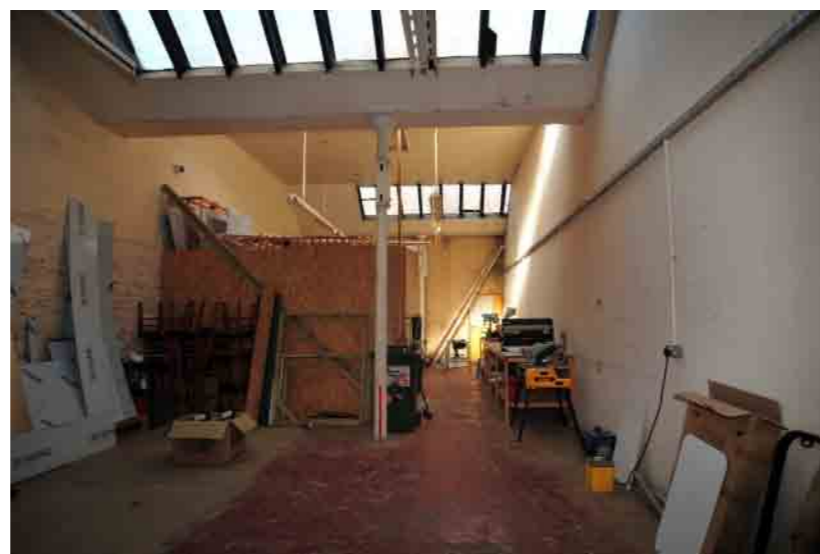


Plate 11 - Building 3, Unit 33 cast-iron columns supporting the cast-iron support plate



Plate 12 - Building 3, Unit 33 cast-iron column head with holes for line-shaft bracket

Key:

Title:

Project:
Borders Railway Project

Scale at A3:

Client:
EDM Ltd per Transport Scotland

Key:



Plate 13 - Building 3, Unit 28 a cast-iron column with sockets for a line-shaft bracket



Plate 14 - Building 3, Unit 28 two cast-iron columns with holes for line-shaft brackets



Plate 15 - Building 4, north-east facing elevation



Plate 16 - Building 4, east and south-facing elevations



Plate 17 - Building 4, Unit 41, two replacement columns supporting the roof plate

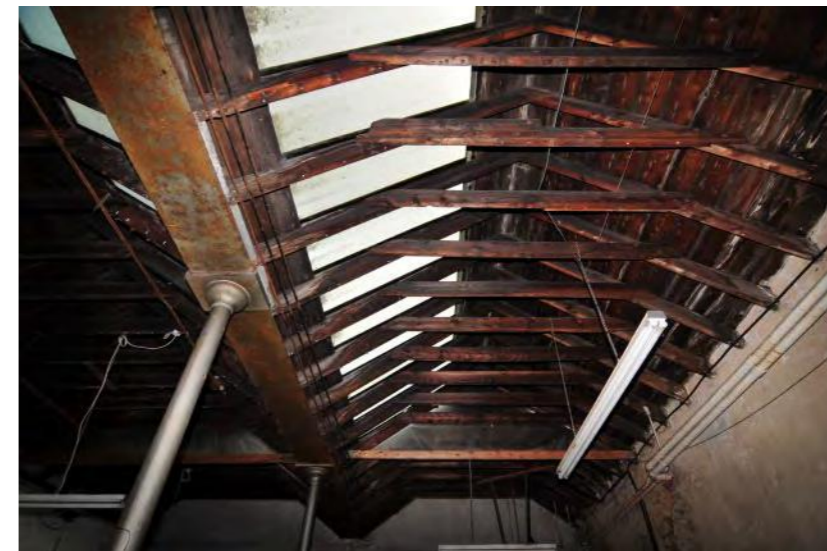


Plate 18 - Building 4, Unit 41 exposed A-frame roof trusses and roof lights

CFA ARCHAEOLOGY LTD
 The Old Engine House
 Eskmills Park
 Musselburgh
 East Lothian, EH21 7PQ
 t: 0131 273 4380
 f: 0131 273 4381
 e: info@cfa-archaeology.co.uk
 w: www.cfa-archaeology.co.uk

Fig. No: **Plates 13-18** Revision: **A**

Title:

Project:
Borders Railway Project

Scale at A3:

Client:
EDM Ltd per Transport Scotland

Drawn by: **GC** Checked by: **LW** Report No: **1981**

Key:



Plate 19 - Building 4, Unit 38, exposed painted wall fabric behind modern cladding



Plate 20 - Building 5, Unit 1 north-facing elevation



Plate 21 - Building 5, Unit 1 south-facing elevation



Plate 22 - Building 5, Unit 22 north-facing elevation of the shuttered concrete building



Plate 23 - Building 5, Unit 3 north-facing elevation of the main plant room



Plate 24 - Building 5, Unit 2 engine house, north and west-facing elevations

Key:



Plate 25 - Building 6, north and west-facing elevations of the South of Scotland Weavers factory building



Plate 26 - Building 6, north and east elevations of the South of Scotland Weavers factory building



Plate 27 - Building 6, Unit 3 interior view of the factory floor facing eastwards



Plate 28 - Building 6, Unit 4 interior view of the factory storeroom



Plate 29 - Building 6, Unit 2 exterior east-facing wall and staircase to mezzanine floor



Plate 30 - Building 5, Unit 3 textile weaving machine in situ

Key:



Plate 31 - Stow Station House, Unit 1, interior detail



Plate 32 - Stow Station House, Unit 9, detail of coal chute



Plate 33 - Stow Station House, Unit 11, interior detail

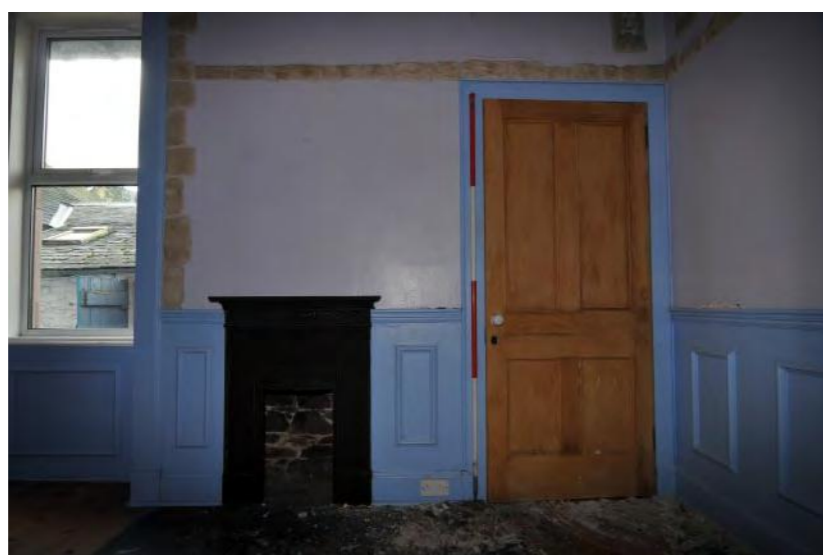


Plate 34 - Stow Station House, Unit 12, interior detail



Plate 35 - Stow Station House, Unit 16, interior detail

Key:



Plate 36 - Stow Station House, north-facing elevation from the north-east



Plate 37 - Stow Station House, north-facing elevation from the north-west



Plate 38 - Stow Station House, east-facing elevation from the north-east



Plate 39 - Stow Station House, south-facing elevation



Plate 40 - Stow Station House, west-facing elevation from the south-west



Plate 41 - Stow Station House, view of the yard from the north

Key:



Plate 42 - Torwoodlee Gate Piers, general view from the east



Plate 43 - Torwoodlee Gate Piers, general view from the north-east



Plate 44 - Torwoodlee Gate Piers, detailed shot of the west pier from the east



Plate 45 - Torwoodlee Gate Piers, detailed shot of the pyramid-shaped coping stone