

# CFA Archaeology Ltd

archaeological consultants

Advice on Archaeology & Planning

Environmental Impact Assessment

Interpretation, Design & Display

Finds/ Environmental Analysis

Field Evaluation & Excavation

Historic Building Recording


Site & Landscape Survey

Geophysical Survey

**St Martin's Church, 4 Magdalene Drive,  
Edinburgh**

**Historic Building Survey**

**Report No 2039**

 0131 273 4380

 0131 273 4381

 [info@cfa-archaeology.co.uk](mailto:info@cfa-archaeology.co.uk)

 [www.cfa-archaeology.co.uk](http://www.cfa-archaeology.co.uk)

## **CFA ARCHAEOLOGY LTD**

The Old Engine House  
Eskmills Business Park  
Musselburgh  
East Lothian  
EH21 7PQ

Tel: 0131 273 4380  
Fax: 0131 273 4381  
email: [info@cfa-archaeology.co.uk](mailto:info@cfa-archaeology.co.uk)  
web: [www.cfa-archaeology.co.uk](http://www.cfa-archaeology.co.uk)

Author	Michael Cressey BA MSc PhD MifA FSA Scot
Illustrator	Graeme Carruthers MA MifA
Editor	Bruce Glendinning BSc PGDip MifA
Commissioned by	Cruden Homes (East)
Date issued	April 2012
Version	0
OASIS Reference	cfaarchal-122598
Planning Application No	11/03463/FUL
Grid Ref	NT 3050 7260

This document has been prepared in accordance with CFA Archaeology Ltd standard operating procedures.

**St Martin's Church, 4 Magdalene Drive,  
Edinburgh**

**Historic Building Survey**

**Report No 2039**

## CONTENTS

1.	Introduction	3
2.	Working Methods	4
3.	Building Recording Results	5
4.	Conclusion	8
5.	References	8

## APPENDICES

Appendix 1	Photographic Record	9
Appendix 2	DES Entry	11

## TABLES

Table 1	Photographic recording requirements	4
Table 2	Summary table of individual room/feature dimensions	5
Table 3	Unit function and summary description	6

## FIGURES (Bound at rear)

Figure 1	General Location map of St Martin's Church
Figure 2	Plan of St Martin's Church showing interior units and direction of photographs.
Figure 3	North-facing elevation of St Martin's Church
Figure 4	North and east-facing gable wall of St Martin's Church
Figure 5	West facing gable of St Martin's Church
Figure 6	Date stone 1957 on the wall fronting the main church entrance
Figure 7	South-facing elevation of the church complex
Figure 8	Church chancel and altar
Figure 9	Interior steel frame of the chancel
Figure 10	Vestibule partition wall and south gable of the church
Figure 11	Interior view of the pine clad vestibule
Figure 12	Interior view of the Small Hall
Figure 13	General view of the Vestry
Figure 14	South end of the Large Hall with wooden stage
Figure 15	North end of the Large Hall with lockers

## Contact prints (Bound at rear)

## **1. INTRODUCTION**

### **1.1 General**

This report presents the results of a Level 1 Photographic Survey undertaken in April 2012 by CFA Archaeology Ltd (CFA) at St Martin's Church, Magdalene Drive, Edinburgh (NT 3050 7260) (Fig. 1). The work was commissioned by Cruden Homes (East).

The church and its halls are to be demolished to make way for a modern housing development including a new church. The City of Edinburgh Council Archaeology Service (CECAS) considers St Martin's Church to be of local historical interest and as such they requested that a Level 1 (English Heritage 2006) standing building recording survey be carried out prior to its demolition.

A Written Scheme of Investigation (WSI) for the work was approved by CECAS.

### **1.2 Background**

St Martin's Church was built in 1957 (Fig 6) by the Church of Scotland. The church occupies a rectangular footprint and is aligned east to west. Adjoining the south elevation of the church is a 'small' hall. The hall and the adjoining vestry and kitchen were built in 1990. A larger hall, now in a derelict state, is a brick-built structure with a stage and boiler house at its south end. The church complex sits in a rectangular plot surrounded by a boundary wall with railings.

### **1.3 Objectives**

The objectives of the standing building survey were:

1. To carry out a Level 1 photographic survey of the church complex prior to its demolition.
2. To produce an illustrated report outlining the results of the work.

## 2. WORKING METHODS

### 2.1 General

CFA Archaeology Ltd follows the Institute for Archaeologists' Code of Conduct, and Standards and Guidelines for Historic Building Surveys as appropriate.

### 2.2 Building Survey

A Level 1 Building Survey (English Heritage 2006) was carried out. This essentially comprised a photographic survey of the church and church halls linked to an annotated architectural ground floor plan.

The photographic survey included the elements listed in Table 1. A D300 digital camera was used, using both flash and natural lighting. Measurements were obtained using a hand-held Lieca distometer. The orientation of the photographs taken are shown on Fig. 2.

RECORDING ELEMENT	PHOTOGRAPHIC SURVEY
General location/topographical setting	Level 1
Church & Hall, all exterior elevations	Level 1
Church & Hall, all interior elevations	Level 1
Church & Hall, internal rooms/partitions	Level 1
Church & Hall, fixtures & fittings	Level 1

Table 1. Photographic recording requirement

### 3. BUILDING RECORDING RESULTS

#### 3.1 General

Unit descriptions and dimensions are listed below and their position marked on the ground plan (Fig. 2). Summary descriptions of each unit are listed in Table 2.

Building	Unit No.	Dimensions (L x B x H)
Chancel	1	17.8m x 13.2m x 6.8m
Session Room	2	5.3m x 4.7m x 2.8m
Vestibule	3	5.3m x 3.4m x 2.8m
Cloakroom	4	5.1m x 4.7m x 2.8m
Small Hall	5	9.9m x 7.3m x 2.9m
Disabled toilet	6	2m x 1.7m
Vestry	7	3.5m x 3.8m x 2.9m
Hallway	8	10m x 2.7m x 2.9m
Kitchen	9	7m x 3.7m x 2.9m
Gents toilet	10	No access
Ladies toilet	11	No access
Large Hall	12	16.07m x 10.2m x 5.6m
Anti-room	13	4.1m x 3.1m
Boiler Room	14	5.2m x 3.1m x 2.9m
Fuel oil store	15	No access

Table 2. Summary table of individual room/feature dimensions

#### 4.2 Exterior architectural character

##### *North-facing elevation (Fig. 3)*

The north-facing elevation of the church measures 24m long and includes the church and gable of the Large Hall. The church is lit by a large window that occupies nearly the full height of the elevation at its east end. On the west side of the window there is an out-shot rectangular bellcote that extends c. 1m above the eaves. The fenestration comprises five square-headed casement windows. The main entrance porch extends off the west gable of the church.

Set back off the main church alignment is the gable and annex entrance to the Large Hall measuring c.12m wide. The annex has a flat roof and is lit by a series of small square windows. The roof of the Large Hall is pitched. Both the church and Large Hall are covered with pebble-dash render.

##### *East-facing elevation (Fig. 4)*

The east-facing elevation includes the church gable, the gable wall of the Small Hall and the main wall of the Large Hall with combined length of 42m. The church gable is pitched with flat corners. The gable of the Small Hall has slight pitch to its roof which is asymmetric. Two windows occupy the centre of the gable with a door situated on the north side. The Large Hall's east-facing wall includes three tall windows and a fire exit at its south end. At the south end of the hall a two storey outshot block has casement windows on the ground and first floors. All the walls are covered with pebble-dash render.

### *South-facing elevation (Fig. 7)*

The south-facing elevation includes the east end of the church, the main wall of the Small Hall and the gable end of the Large Hall with a combined length of 37m. The east end of the church is lit by a large rectangular window that occupies more or less the full length of the wall and is broken by a double-leaved doorway. Two narrow buttresses flank either side of the wall. The rest of the wall is plain with two casement windows on the ground floor.

The main wall of the Small Hall contains three bays of modern casement windows and is otherwise featureless.

The gable of the Large Hall has a central door on the ground floor flanked by a blind three-paned casement window. Another blind window is present on the west side of the doorway. The walls are featureless and covered with pebble-dash render.

### *West-facing elevation (Fig. 5)*

The west-facing elevation includes the main gable of the church, the annex to the Large Hall and its main wall with a combined length of 41m.

The church gable is dominated by a large window with c160 panes of glass. A blue painted crucifix is situated at its centre. The flanking walls are plain. The main entrance is hidden behind a stone-built wall that has a date-stone at its centre inscribed 1957 (Fig. 6).

The church gable adjoins the main block of the annex and Large Hall which is lit by a series of rectangular windows situated towards the top of the wall. The south end of the elevation is outshot slightly with a steel doorway into the boiler house.

## **4.3 Interior description**

The interior of each unit is described in Table 3.

<b>Unit No.</b>	<b>Room/feature</b>	<b>Summary description</b>
1	Chancel	The Chancel (Fig. 8) is lit by the large rectangular windows at the east end which were designed to throw natural light onto the altar. The building is lit on its north and south by smaller casement windows. The main walls are plain. The wall altar is covered with an embossed patterned material and the walls on either side are clad with contrasting pine. The ceiling and vestibule partition wall at the west end are also clad with pine (Fig 10). The columns of the steel frame supporting the roof are visible and have been boxed in (Figs 9-10). The floor comprises varnished wood and linoleum. An organ is present in the north-west corner of the Chancel.
2	Session Room	The session room is rectangular and lit by a

		casement window on the north wall.
3	Vestibule	The vestibule (Fig. 11) is rectangular with a set of double-leaved doorways at the main entrance and into the Chancel. The walls are clad with pine.
4	Cloakroom	A door leads into the cloakroom from the vestibule. The room is lit by five small windows on its east-facing elevation. The cloakroom houses a set of lockers on the east wall, a door on the same wall leads into the Chancel.
5	Small hall	The Small Hall (Fig. 12) was constructed in 1990 and is well lit by aluminium casement windows on the south and east-facing elevations.
6	Disabled Toilet	The disabled toilet contains modern sanitary ware and is accessed from the hall to the Vestry.
7	Vestry	The Vestry (Fig. 13) is rectangular and lit by a single window on the interior north-facing elevation. All fixtures and fittings are modern.
8	Hallway	The hallway provides access between the Small and Large Hall with doorways off the ladies and gents toilets and kitchen.
9	Kitchen	The kitchen is fitted on all sides with modern kitchen units. A double-leaved hatch serves the Large Hall. The kitchen is lit at its south end by a large casement window.
10	Gents Toilet	No access
11	Ladies Toilet	No access
12	Large Hall	The large hall (Figs 14-15) is lit on its west-facing elevation by three large rectangular windows that nearly occupy the full height of the wall. These contrast with a smaller set of rectangular windows on the opposite wall. At the south end of the hall there is a wooden stage with a door leading down to an ante-room. The north end of the hall is dominated by a series of lockers. The steel-frame of the hall is visible. The floor is parquet and lined for recreational ball games.
13	Ante-room	The ante-room is accessed from behind the stage. The walls are featureless. A sink-unit is present in the north-east corner of the room. A door at the south-west corner allows access to a staircase to the floor above.
14	Boiler Room	The boiler room is accessed from the exterior of the Large Hall and has plain brick walls. The cast-iron oil-fired boiler occupies the floor. A work-bench is present at the south end. A barred window on the internal west-facing wall is related to the fuel oil store where a large metal tank is visible.
15	Fuel oil store	No access

Table 3. Unit function and summary description



#### **4. CONCLUSION**

In 1957 St Martin's Church would have stood out as being 'modern' in architectural style with its large Chancel windows and timber clad interior. The building is largely unaltered since its construction with the exception of the Small Hall, vestry, disabled toilet and kitchen that were all built in 1990.

The photographic survey has adequately recorded the architectural form and character of St Martin's Church and halls prior to their demolition.

In accordance with the terms of the WSI approved by CECAS the survey has now been completed. An online OASIS entry and submission to Discovery and Excavation in Scotland will be made to disseminate the results of the survey (Appendix 2).

#### **5. REFERENCES**

English Heritage 2006 English Heritage 2006 *Understanding Historic Buildings: A guide to good recording Practice*. London.

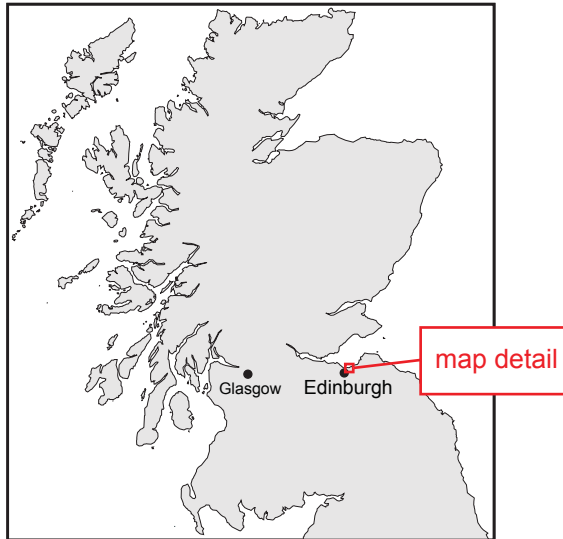
## APPENDIX 1: PHOTOGRAPHIC RECORD

Image	Location	Detail	Facing
001	Unit 1 - Chancel	Interior south-facing elevation, general view	N
002	Unit 1 - Chancel	Interior south-facing elevation, general view	N
003	Unit 1 - Chancel	Interior west-facing gable, general view of the altar	E
004	Unit 1 - Chancel	Interior south-facing window lighting the altar	N
005	Unit 1 - Chancel	Interior north-facing window lighting the altar	S
006	Unit 1 - Chancel	Interior north-facing main wall of the chancel	S
007	Unit 1 - Chancel	Interior north-facing main wall of the chancel	S
008	Unit 1 - Chancel	Interior east-facing elevation, main entrance and gable	W
009	Unit 1 - Chancel	Interior east-facing elevation, main entrance and gable	W
010	Unit 1 - Chancel	Church organ, general view	W
011	Unit 2 - Session Room	Interior south-facing elevation	N
012	Unit 2 - Session Room	Interior west-facing elevation	E
013	Unit 2 - Session Room	Interior east-facing elevation	W
014	Unit 3 - Vestibule	Interior west-facing entrance to Chancel	E
015	Unit 3 - Vestibule	Interior east-facing fire exit	W
016	Unit 4 - Cloakroom	Interior west facing wall, lockers	E
017	Unit 4 - Cloakroom	Interior east-facing wall and windows	W
018	Unit 5 - Small Hall	Interior south-facing wall	N
019	Unit 5 - Small Hall	Interior south-facing wall	N
020	Unit 5 - Small Hall	Interior west-facing windows	E
021	Unit 5 - Small Hall	Interior north-facing windows	S
022	Unit 5 - Small Hall	Interior east-facing entrance and wall	W
023	Unit 6 - Disabled toilet	Interior general view of disabled toilet	W
024	Unit 7 - Vestry	Interior general view	SW
025	Unit 7 - Vestry	Interior general view	NE
026	Unit 8 - Hall	Interior general view looking down the hall	E
027	Unit 8 - Hall	Interior general view looking down the hall	W
028	Unit 9 - Kitchen	Interior south-facing door into the kitchen	N
029	Unit 9 - Kitchen	Interior north-facing window into the kitchen	S
030	Unit 12 - Large Hall	Interior south-facing gable and lockers	N
031	Unit 12 - Large Hall	Interior west-facing windows and roof detail	E
032	Unit 12 - Large Hall	Interior north-facing gable and stage	S
033	Unit 12 - Large Hall	Interior east-facing wall and windows	W
034	Unit 13 - Room	Interior west-facing wall of room at side of stage	E
035	Unit 13 - Room	Interior north-facing wall of room at side of stage	S
036	Unit 13 - Room	Interior south-facing wall with stairs to stage	N
037	Unit 14 -Boiler Room	Interior south-facing wall and oil-fired boiler	N
038	Unit 14 -Boiler Room	Interior west-facing wall of the boiler house	E
039	Spoilt Shot	Over-exposed	N/a
040	West-facing gable	Exterior gable of the church and window detail	E
041	West-facing gable	Exterior gable of the church and window detail	E
042	West-facing wall	Exterior, date stone with Church of Scotland emblem and 1957	E
043	West-facing wall	Exterior, date stone with Church of Scotland emblem and 1957	E
044	North-facing elevation	Exterior gable of the large hall and hallway annex	S
045	North-facing elevations	General view of St Martin's Church and hall	SE

<b>Image</b>	<b>Location</b>	<b>Detail</b>	<b>Facing</b>
046	North-facing wall	Exterior of St Martin's Church	S
047	North-facing wall	Exterior of St Martin's Church	S
048	East gable and north wall	Exterior, general view of the east end of St Martin's Church and bell tower	SW
049	East gable and north wall	Exterior, general view of the east end of St Martin's Church and bell tower	SW
050	North-facing window	Exterior north-facing window lighting the Chancel	S
051	North-facing elevation	General distance view of St Martin's Church	S
052	South-facing gable	Exterior, south-facing gable of the Large Hall	NE
053	South-facing elevation	Exterior south-facing gable of the Large hall	N
054	South-facing elevation	Exterior south-facing gable of the Large hall	N
056	East-facing elevation	Exterior east-facing elevation of the Large Hall	W
057	East-facing elevation	Exterior east-facing elevation of the Large Hall	W
058	South-facing elevation	Exterior south-facing elevation of the Small Hall	N
059	East-facing gable	East-facing gable of the Small Hall	W
060	South-facing elevation	Window detail at the east end of the Chancel	N
061	South-facing elevation	Window detail at the east end of the Chancel	N
062	East-facing gable	Chancel gable, general detail	NW
063	East-facing gable	Chancel gable, general detail	NW
064	South-facing aspect	General view of St Martin's Church halls	N
065	South-facing aspect	General view of St Martin's Church halls	N

## APPENDIX 2: DES ENTRY

<b>LOCAL AUTHORITY:</b>	City of Edinburgh Council
<b>PROJECT TITLE/SITE NAME:</b>	St Martin's Church, Magdalene Drive, Edinburgh. Standing Building Survey
<b>PROJECT CODE:</b>	MAGD
<b>PARISH:</b>	Edinburgh
<b>NAME OF CONTRIBUTOR:</b>	Dr M Cressey
<b>NAME OF ORGANISATION:</b>	CFA Archaeology Ltd
<b>TYPE(S) OF PROJECT:</b>	Historic Building Survey
<b>NMRS NO(S):</b>	N/a
<b>SITE/MONUMENT TYPE(S):</b>	Church & Halls
<b>SIGNIFICANT FINDS:</b>	N/A
<b>NGR (2 letters, 6 figures)</b>	NT
<b>START DATE (this season)</b>	April 2012
<b>END DATE (this season)</b>	April 2012
<b>PREVIOUS WORK (incl. DES ref.)</b>	None
<b>MAIN (NARRATIVE) DESCRIPTION:</b> (May include information from other fields)	<p>A Level 1 photographic survey was conducted at St Martin's Church, 4 Magdalene Drive, Edinburgh. The church is to be demolished to make way for modern housing and a new church facility. St Martin's was built in 1957 and comprises a brick and steel-framed chancel lit at its east end by large windows. The exterior walls are covered with pebble-dash render and a bellcote is present on its north-facing elevation.</p> <p>The survey included the two halls on the south side of the church. The large hall was built in 1957 and is steel-framed with a stage at its south end. The small hall was built in 1990 along with the vestry, disabled toilet and kitchen.</p>
<b>PROPOSED FUTURE WORK:</b>	None
<b>CAPTION(S) FOR ILLUSTRS:</b>	None
<b>SPONSOR OR FUNDING BODY:</b>	Cruden Homes (East)
<b>ADDRESS OF MAIN CONTRIBUTOR:</b>	CFA Archaeology Ltd, Old Engine House, Eskmills Business Park, Musselburgh, EH21 7PQ
<b>EMAIL ADDRESS:</b>	mressey@cfa-archaeology.co.uk
<b>ARCHIVE LOCATION (intended/deposited)</b>	Survey reports lodged with NMRS and SMR. Archive to be deposited with NMRS.



Key:



Fig. No: 1 Revision: A Client: Cruden Homes (East)

Title: Location map of St Martins Church

Project: St Martin's Church, 4 Magdalene Drive, Level 1  
Historic Building Survey

Scale@ A4 :

**CFA**  
ARCHAEOLOGY LTD

CFA ARCHAEOLOGY LTD  
The Old Engine House  
Eskmills Park  
Musselburgh  
East Lothian, EH21 7PQ

t: 0131 273 4380  
f: 0131 273 4381  
e: info@cfa-archaeology.co.uk  
www.cfa-archaeology.co.uk

Drawn by: GC Checked: LW Report No: 2039



Key:

⑥ Unit numbers

Number and direction of photograph

Units by number and function

- 1. Chancel
- 2. Session Room
- 3. Vestibule
- 4. Cloakroom
- 5. Small Hall
- 6. Disabled toilet
- 7. Vestry
- 8. Hallway
- 9. Kitchen
- 10. Gents toilet
- 11. Ladies toilet
- 12. Large Hall
- 13. Anti-room
- 14. Boiler Room
- 15. Fuel oil Store

**CFA**  
 CFA ARCHAEOLOGY LTD  
 Old Engine House  
 Eskmills Park  
 Musselburgh  
 East Lothian, EH21 7PQ  
 t: 0131 272 6390  
 f: 0131 272 6381  
 e: info@cfa-archaeology.co.uk  
 www.cfa-archaeology.co.uk

Fig. No: 2

Revision: A

Title:  
**Plan of St Martins Church showing Interior Units and direction of photographs**

Project:  
**St Martin's Church, 4  
 Magdalen Drive, Edinburgh**

Client:  
**Cruden Homes (East)**

Scale at A3:  
**1:250**

Drawn by:  
**GC**

Checked:  
**LW**

Report No:  
**2039**



The copyright in this document (including its electronic form) shall remain vested in CFA Archaeology Ltd (CFA) but the Client shall have a licence to copy and use the document for the purpose for which it was provided. CFA shall not be liable for the use by any person of this document for any purpose other than that for which the same was provided by CFA. This document shall not be reproduced in whole or in part or relied upon by third parties for any use whatsoever without the express written authority of CFA.

Reproduced with the permission of Ordnance Survey on behalf of The Controller of Her Majesty's Stationery Office. © Crown copyright. CFA Archaeology Ltd, Old Engine House, Eskmills Park, Musselburgh EH21 7PQ, AL100034785



Fig. 3 North-facing elevation of St Martin's Church



Fig. 4 North and east-facing gable wall of St Martin's Church



Fig. 5 West facing gable of St Martin's Church


Key:	Fig. No:	3-5	Revision:	A	Client:	Cruden Homes (East)
	Title:	Photographs of St Martin's Church				
	Project:	St Martins Church, 4 Magdalene Drive, Level 1 Historic Building Survey				
Scale@ A4 :						 <p>CFA ARCHAEOLOGY LTD The Old Engine House Eskmills Park Musselburgh East Lothian, EH21 7PQ t:0131 273 4380 f:0131 273 4381 e:info@cfa-archaeology.co.uk www.cfa-archaeology.co.uk</p>
						Drawn by: GC    Checked: LW    Report No: 2039



Fig. 6 Date stone 1957 on the wall fronting the main church entrance



Fig. 7 South-facing elevation of the church complex



Fig. 8 Church chancel and altar

Key:

Scale@ A4 :

Fig. No:	6-8	Revision:	A	Client:	Cruden Homes (East)
Title:	Photographs of St Martin's Church				
Project:	St Martins Church, 4 Magdalene Drive, Level 1 Historic Building Survey				



**CFA** ARCHAEOLOGY LTD  
 The Old Engine House  
 Eskmills Park  
 Musselburgh  
 East Lothian, EH21 7PQ  
 t: 0131 273 4380  
 f: 0131 273 4381  
 e: info@cfa-archaeology.co.uk  
 www.cfa-archaeology.co.uk

Drawn by:	GC	Checked:	LW	Report No:	2039
-----------	----	----------	----	------------	------





Fig. 9 Interior steel frame of the chancel



Fig. 10 Vestibule partition wall and south gable of the church



Fig. 11 Interior view of the pine clad vestibule


Key:	Fig. No:	9-11	Revision:	A	Client:	Cruden Homes (East)	 <b>CFA</b> ARCHAEOLOGY LTD The Old Engine House Eskmills Park Musselburgh East Lothian, EH21 7PQ t:0131 273 4380 f:0131 273 4381 e:info@cfa-archaeology.co.uk www.cfa-archaeology.co.uk
	Title:	Photographs of St Martin's Church					
Scale@ A4 :	Project:	St Martins Church, 4 Magdalene Drive, Level 1 Historic Building Survey				Drawn by: GC Checked: LW Report No: 2039	



Fig. 12 Interior view of the Small Hall




Fig. 13 General view of the Vestry



Fig. 14 South end of the Large Hall with wooden stage

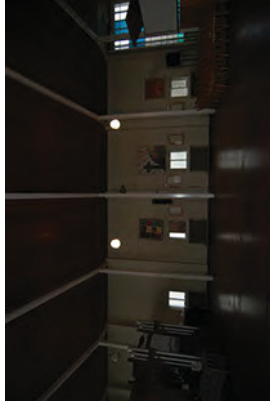


Fig. 15 North end of the Large Hall with lockers

Key:	Fig. No:	12-15	Revision:	A	Client:	Cruden Homes (East)
	Title:	Photographs of St Martin's Church				
	Project:	St Martins Church, 4 Magdalene Drive, Level 1 Historic Building Survey				
Scale@ A4 :						 <p>CFA ARCHAEOLOGY LTD The Old Engine House Eskmills Park Musselburgh East Lothian, EH21 7PQ t:0131 273 4380 f:0131 273 4381 e:info@cfa-archaeology.co.uk www.cfa-archaeology.co.uk</p>
Drawn by:	GC	Checked:	LW	Report No:	2039	



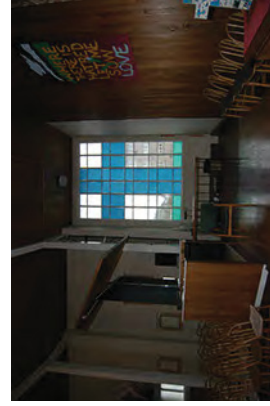
MAGD 001.jpg



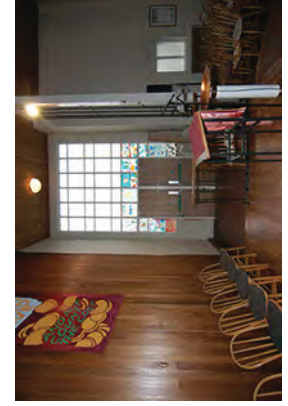
MAGD 002.jpg



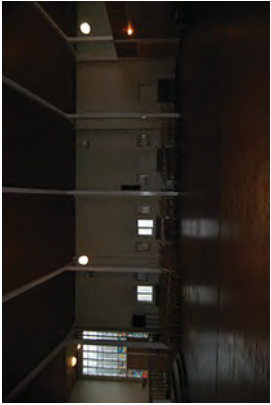
MAGD 003.jpg



MAGD 004.jpg



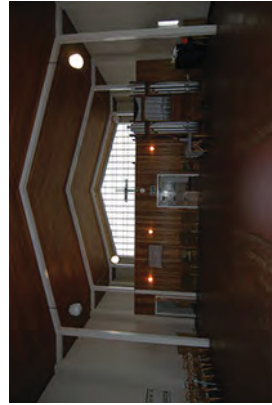
MAGD 005.jpg



MAGD 006.jpg



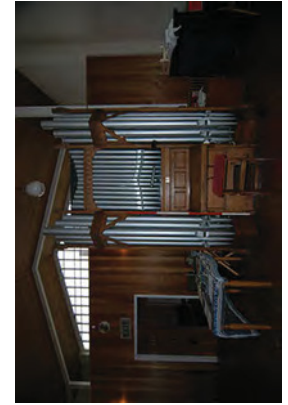
MAGD 007.jpg



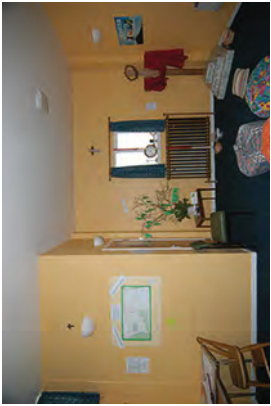
MAGD 008.jpg



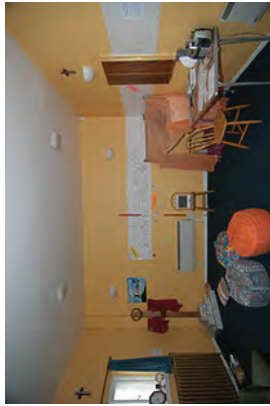
MAGD 009.jpg



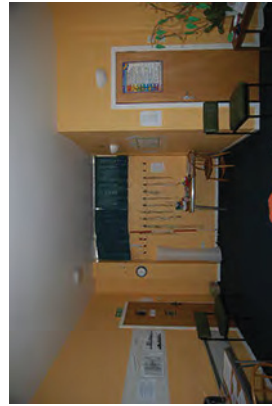
MAGD 010.jpg



MAGD 011.jpg



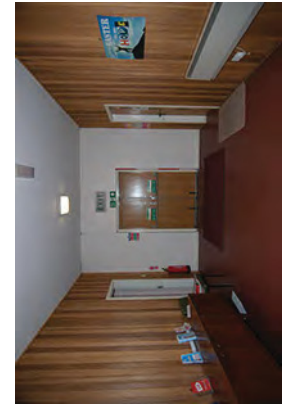
MAGD 012.jpg



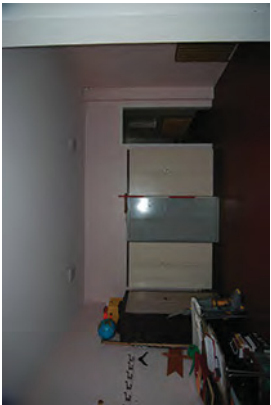
MAGD 013.jpg



MAGD 014.jpg



MAGD 015.jpg



MAGD 016.jpg



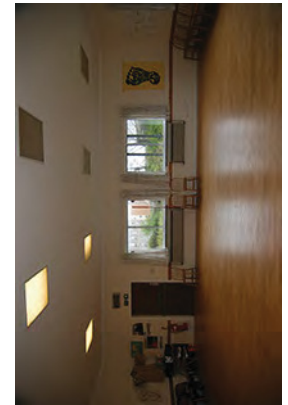
MAGD 017.jpg



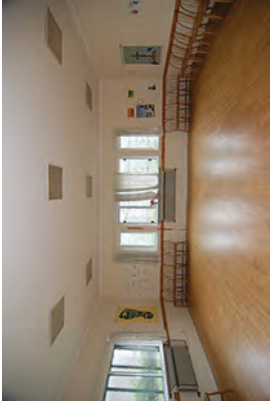
MAGD 018.jpg



MAGD 019.jpg



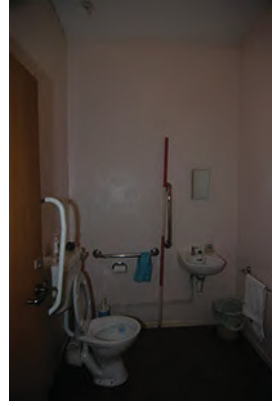
MAGD 020.jpg



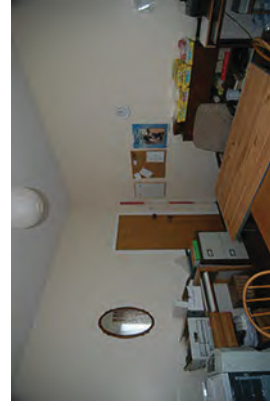
MAGD 021.jpg



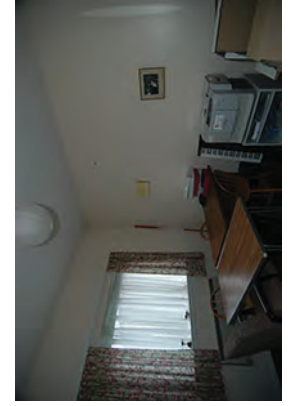
MAGD 022.jpg



MAGD 023.jpg



MAGD 024.jpg



MAGD 025.jpg



MAGD 026.jpg



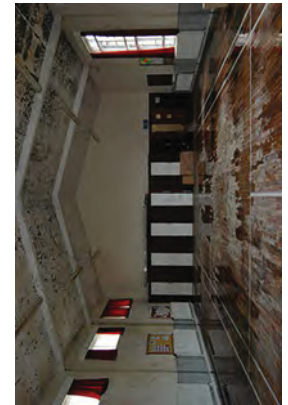
MAGD 027.jpg



MAGD 028.jpg



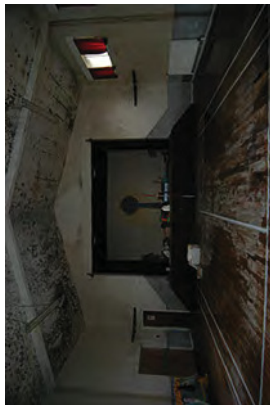
MAGD 029.jpg



MAGD 030.jpg



MAGD 031.jpg



MAGD 032.jpg



MAGD 033.jpg



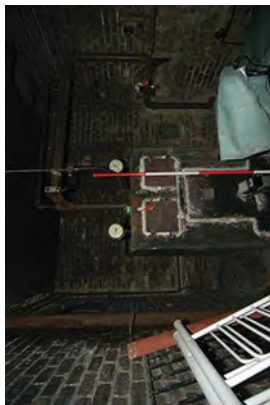
MAGD 034.jpg



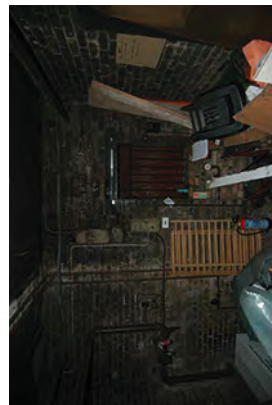
MAGD 035.jpg



MAGD 036.jpg



MAGD 037.jpg



MAGD 038.jpg



MAGD 039.jpg



MAGD 040.jpg



MAGD 041.jpg



MAGD 042.jpg



MAGD 043.jpg



MAGD 044.jpg



MAGD 045.jpg



MAGD 046.jpg



MAGD 047.jpg



MAGD 048.jpg



MAGD 049.jpg



MAGD 050.jpg



MAGD 051.jpg



MAGD 052.jpg



MAGD 053.jpg



MAGD 054.jpg



MAGD 055.jpg



MAGD 056.jpg



MAGD 057.jpg



MAGD 058.jpg



MAGD 059.jpg



MAGD 060.jpg



MAGD 061.jpg



MAGD 062.jpg



MAGD 063.jpg



MAGD 064.jpg



MAGD 065.jpg