

CFA Archaeology Ltd

archaeological consultants

Advice on Archaeology & Planning

Environmental Impact Assessment

Interpretation, Design & Display

Finds/ Environmental Analysis

Field Evaluation & Excavation


Historic Building Recording


Site & Landscape Survey

Geophysical Survey

Fallago Rig Wind Farm Erection of a Temporary Meteorological Mast F6: Archaeological Watching Brief

Report No. 2068

 0131 273 4380

 0131 273 4381

 info@cfa-archaeology.co.uk

 www.cfa-archaeology.co.uk

CFA ARCHAEOLOGY LTD

The Old Engine House
Eskmills Business Park
Musselburgh
East Lothian
EH21 7PQ

Tel: 0131 273 4380

Fax: 0131 273 4381

email: info@cfa-archaeology.co.uk

web: www.cfa-archaeology.co.uk

Author	Gary Savory MA
Illustrator	Graeme Carruthers MA MifA
Editor	Bruce Glendinning BSc PgDip MifA
Commissioned by	Wind Prospect Ltd
Date issued	January 2013
Version	0
OASIS Reference	Cfaarcha1-126890
Planning Ref No.	Ref: 10/01688/FUL
Grid Ref	NT 58510 59370

This document has been prepared in accordance with CFA Archaeology Ltd standard operating procedures.

**Fallago Rig Wind Farm
Erection of a Temporary Meteorological Mast F6:
Archaeological Watching Brief**

Report No. 2068

CONTENTS

1.	Introduction	3
2.	Working Methods	4
3.	Archaeological Results	4
4.	Conclusion	4
5.	Bibliography	5

Appendices

1.	Photographic Register	5
----	-----------------------	---

Figures (bound at rear)

1.	Location map	
2.	Site location and position of met mast F6	
3.	Anchor Pit for Meteorological Mast F6	

1. INTRODUCTION

1.1 General

This report presents the results of an archaeological watching brief undertaken by CFA Archaeology Ltd (CFA) during November 2011 at Fallago Rig Wind Farm, Wedderlie, Gordon, Berwickshire (NGR: NT 58510 59378) (Fig. 1) The work was commissioned by Wind Prospect Ltd.

1.2 Background

Planning permission (Ref. 10/01688/FUL) has been granted for the erection of a temporary meteorological mast (F6) (Fig. 2) on land at Fallago Rig Wind Farm, Longformacus, Scottish Borders. In response to the planning application for the met mast, a programme of archaeological works was agreed with the Scottish Borders Council Archaeology Service (SBCAS) consisting of a watching brief during associated ground works.

A Written Scheme of Investigation (WSI) dated 10 October 2011 was produced by CFA on behalf of Wind Prospect. The WSI was designed to fulfil the requirements of the planning conditions, in consultation with Dr Chris Bowles, Scottish Borders Council Archaeologist.

This programme of work forms part of a larger scheme which took place across the development area. The results of the watching brief on the enabling works is described under a separate cover (Glendinning 2011). The excavation of structures dating from the 7-9th century AD that were identified on the route of the main access track are described in Suddaby, 2011. The watching brief across the main windfarm area is described in Savory 2012a and the watching brief on met mast F5 is described in Savory 2012b.

1.3 Objectives

The objectives of the watching brief were:

- To conduct an appropriate programme of archaeological investigation (Watching Brief) to monitor all ground breaking works associated with the erection of the mast.
- To mitigate the effects of construction on any archaeological deposits or features identified through excavation and recording and produce a report on them.

2. WORKING METHODS

2.1 General

CFA Archaeology Ltd follows the Institute for Archaeologists' Code of Conduct, Standards and Guidance for Archaeological Fieldwork. Recording of all elements followed established CFA methods, as detailed in the approved WSI.

2.2 Archaeological Watching Brief

Excavation was undertaken using a 12 tonne tracked excavator under constant archaeological supervision. Four anchor pits, measuring approximately 2m x 2m were stripped of topsoil to expose the natural subsoil (Fig. 3). Each of the anchor pits were further excavated to the required depth after it had been ascertained there were no archaeological features. All discoveries, including soil profiles and subsoil characteristics, were recorded using standard CFA recording forms and digital photography.

3. ARCHAEOLOGICAL RESULTS

Peaty topsoil lay over natural in all four pits and no features, deposits or artefacts of archaeological significance were identified.

4. CONCLUSION

An archaeological watching brief was carried out during ground works associated with the erection of a temporary meteorological mast of Fallago Rig Wind Farm in the Scottish Borders. There were no features, deposits or artefacts of archaeological significance identified during the watching brief.

The project archive, comprising all CFA record sheets, maps and reports, will be deposited with the National Monuments Record of Scotland (NMRS) and copies of reports will be lodged with the Aberdeenshire Council Sites and Monuments Record.

A summary statement of the results of this watching brief will be incorporated within a report detailing the results of the wider watching brief covering the main wind farm development for publication in *Discovery and Excavation in Scotland*, and an online OASIS entry will be completed.

5. BIBLIOGRAPHY

Glendinning B, 2011 *Watching Brief and Demarcation Works during Enabling Works, Fallago Rig Windfarm, Scottish Borders*. CFA Unpublished Report No 1910

Savory G, 2012a *Fallago Rig Wind Farm Archaeological Watching Brief*. CFA Unpublished Report No 2049

Savory G, 2012b *Fallago Rig Wind Farm – Erection of a Temporary Meteorological Mast F5: Archaeological Watching Brief*. CFA Unpublished Report No 2067

Suddaby I, 2011 *Fallago Rig Windfarm, Excavation of Buildings and other features adjacent to Byrewater Steading/Kersons Cleugh, Longformacus, Scottish Borders*. CFA Unpublished Report No 1877

APPENDIX 1: Photographic Register

Shot	Description	From	Conditions
1-4	Mast F6 anchor pit	SW, NE	Sunny
5-7	Mast F6 anchor pit	N, S, SE	Sunny
8	Mast F6 anchor pit	E	Sunny
9	Mast F6 anchor pit	NE	Sunny



Map detail

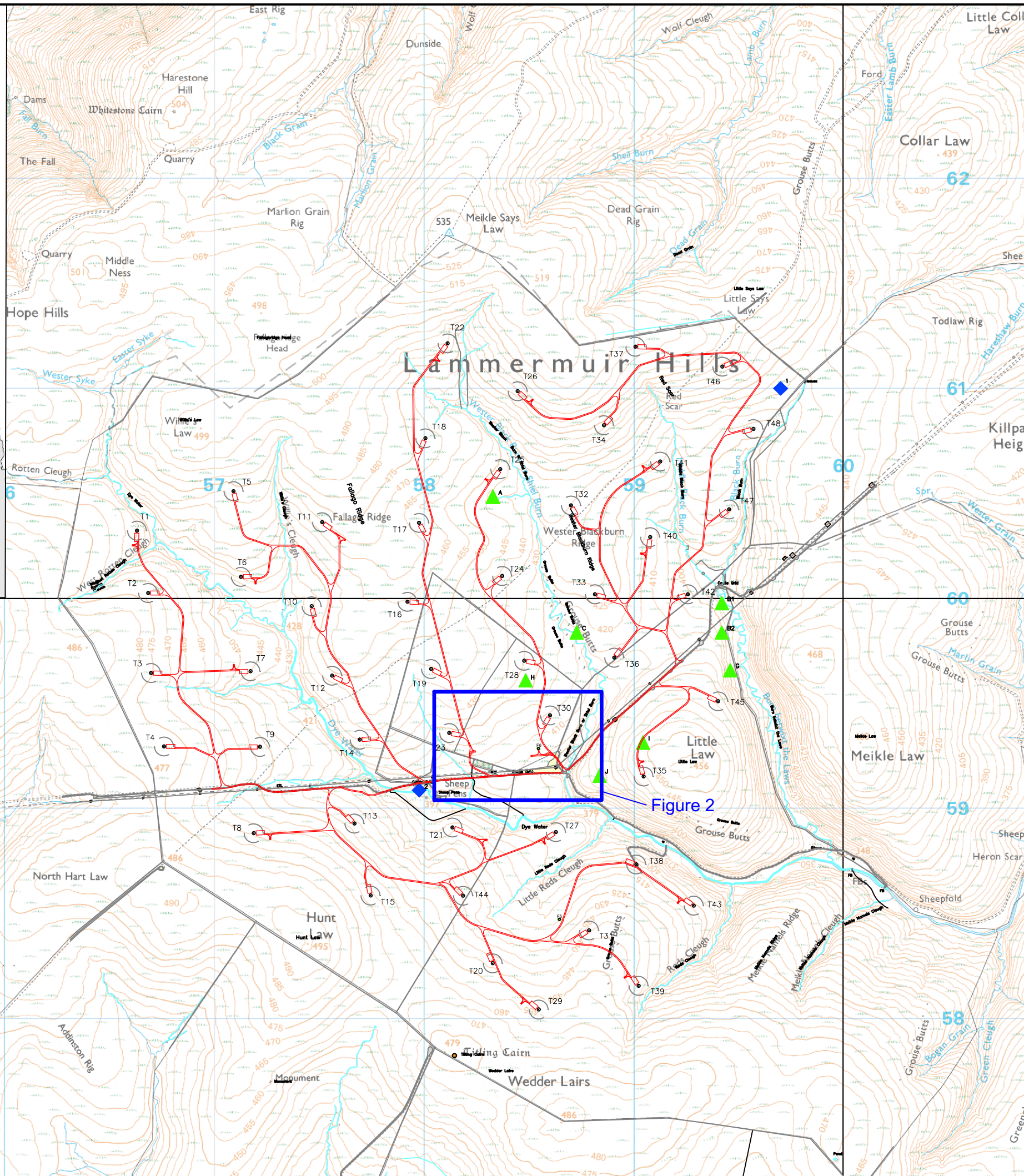


Figure 2



Key:

CFA ARCHAEOLOGY LTD
 The Old Engine House
 Eskmills Park
 Musselburgh
 East Lothian, EH21 7PQ
 t: 0131 273 4380
 f: 0131 273 4381
 e: info@cfa-archaeology.co.uk
 w: www.cfa-archaeology.co.uk

Fig. No: 1	Revision: A
------------	-------------

Title:
Location map

Project:
Fallago Rig Wind Farm,
erection of Temporary
Meteorological Mast F6

Client:
Wind Prospect Ltd

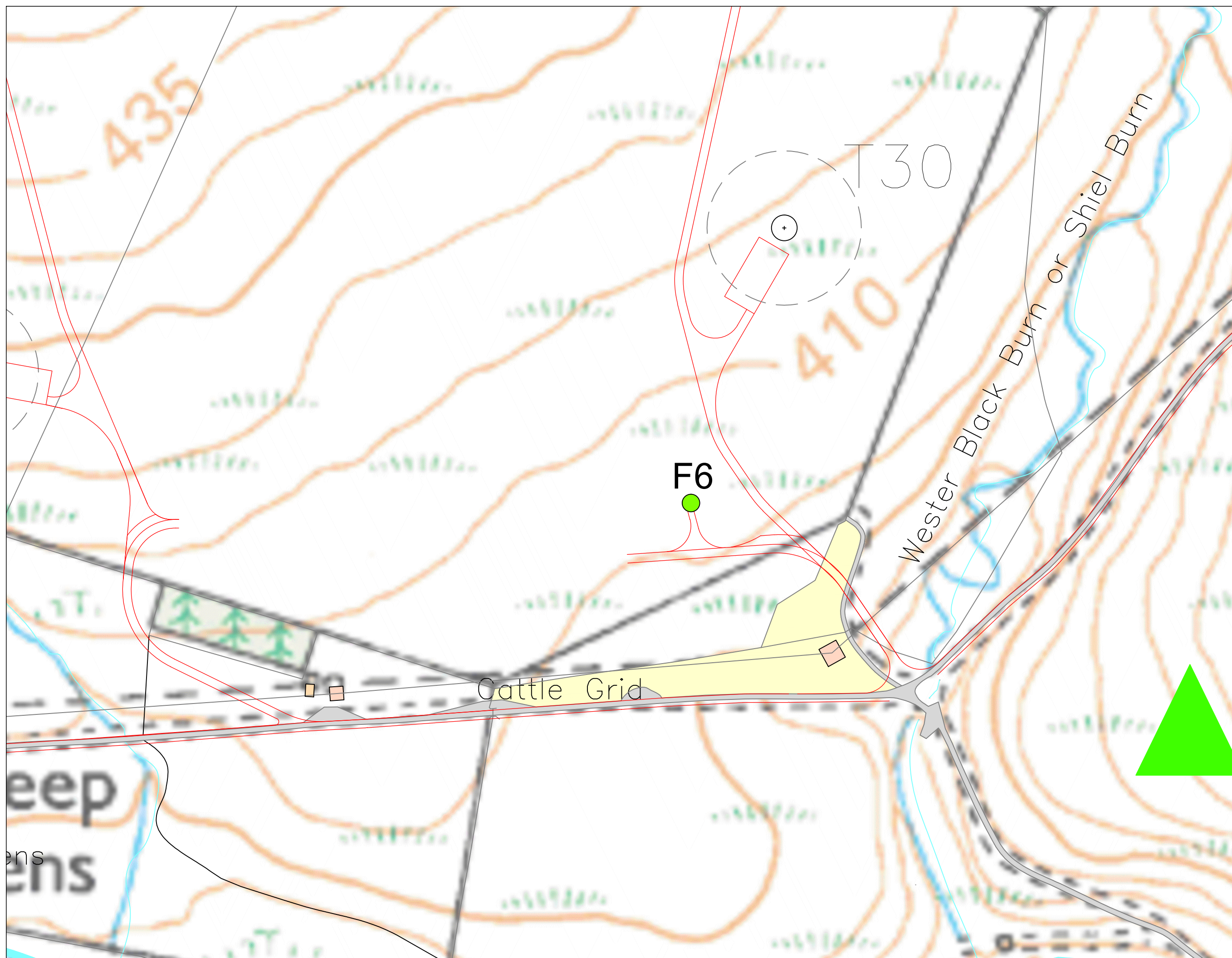
Scale @ A3:
1:20,000

Drawn by: GC	Checked: KH	Report No: 2068
--------------	-------------	-----------------



Key:

● Met Mast



CFA ARCHAEOLOGY LTD
 The Old Engine House
 Eskmills Park
 Musselburgh
 East Lothian, EH21 7PQ
 t: 0131 273 4380
 f: 0131 273 4381
 e: info@cfa-archaeology.co.uk
 w: www.cfa-archaeology.co.uk

Fig. No: 2 Revision: A

Title: Site location and position of Met Mast F6


Project: Fallago Rig Wind Farm, erection of Temporary Meteorological Mast F6

Client: Wind Prospect Ltd

Scale@ A3: 1:2000

Drawn by: GC Checked: KH Report No: 2068



Key:	Fig. No: 3	Revision: A	Client: Wind Prospect Ltd	 CFA CFA ARCHAEOLOGY LTD Unit 22 Moorland's Business Centre Balme Road, Cleckheaton West Yorkshire, BD19 4EZ T: 01274 864245 F: 01274 878494 yorkshire@cfa-archaeology.co.uk
	Title: Anchor pit for Meteorological Mast F6			
Scale at A4:	Project: Fallago Rig Wind Farm, erection of temporary Meteorological Mast, F6			Drawn by: GC Checked: KH Report No: 2068