

CFA Archaeology Ltd

archaeological consultants

Advice on Archaeology & Planning

Environmental Impact Assessment

Field Evaluation & Excavation

Finds / Environmental Analysis

Geophysical Survey

Historic Building Recording

Site & Landscape Survey

Interpretation, Design & Display

**Juniper Green Primary School, Juniper
Green, Edinburgh:
Standing Building Survey
Report No 2057**

CFA ARCHAEOLOGY LTD

The Old Engine House
Eskmills Business Park
Musselburgh
East Lothian
EH21 7PQ

Tel: 0131 273 4380
Fax: 0131 273 4381
email: info@cfa-archaeology.co.uk
web: www.cfa-archaeology.co.uk

Authors	Stuart Mitchell MA AIfA
Illustrator	Leeanne Whitelaw BSc
Editor	Michael Cressey HND BA MSc PhD MifA FSA Scot
Commissioned by	Dundas Building Co Ltd
Date issued	May 2012
Version	0
Planning Ref	11/0194/FUL
Oasis Ref	cfaarcha1-127692
Grid Ref	NT 1968 6875

This document has been prepared in accordance with CFA Archaeology Ltd standard operating procedures.

Juniper Green Primary School
Juniper Green, Edinburgh
Standing Building Survey
Report No 2057

CONTENTS

1.	Introduction	4
2.	Methodology	5
3.	Survey Results	7
4.	Conclusion and Recommendations	13
5.	References	13

Appendices

Appendix 1	Photographic Register	14
Appendix 2	Discovery & Excavation in Scotland Entry	16

Tables

Table 1	Specific recording requirements	5
Table 2	Table 2: Interior dimensions and summary description of rooms within the school.	12

List of Figures (bound at rear)

Figure 1	Location map and layout.
Figure 2a	NW facing elevation
Figure 2b	NE facing elevation
Figure 2c	SE facing elevation
Figure 2d	SW facing elevation
Figure 3a	Ground floor plan showing photo locations
Figure 3b	First floor plan showing photo locations
Figure 3c	Second floor plan showing photo locations

Photographic Plates (bound at rear)

Plate 1	Oblique view of NW and SW facing elevations, central and south blocks
Plate 2	SW facing elevation, south block
Plate 3	NE facing elevation
Plate 4	SE facing elevation, central block
Plate 5	SE facing elevation
Plate 6	General view of north block
Plate 7	General view of prefabricated building
Plate 8	Unit 1, classroom and kitchen area
Plate 9	Unit 6, entrance hall and stair
Plate 10	Unit 7, entrance corridor
Plate 11	Unit 10, classroom

Plate 12	Unit 12, classroom/assembly hall stage
Plate 13	Unit 14, classroom
Plate 14	Unit 15, classroom
Plate 15	Unit 17, main hall and roof truss
Plate 16	Unit 26, top of stair and landing
Plate 17	Unit 22, classroom
Plate 18	Unit 27, classroom
Plate 19	Unit 23, staffroom
Plate 20	Unit 21, roof truss and timber chimney vent

Contact Plates (bound at rear)

1. INTRODUCTION

1.1 General

This report presents the results of an archaeological standing building recording survey carried out by CFA Archaeology Ltd (CFA) at the former Juniper Green Primary School (NGR NT 1968 6875) during May 2012. The work was undertaken in advance of redevelopment of the site for residential purposes. The work was requested by John Lawson, the City of Edinburgh Council Archaeologist and a Written Scheme of Investigation for the surveys was approved by him in advance. A trial trench evaluation is also required following selective demolition and this will be reported on under a separate cover.

1.2 Site Background

The school complex (Fig 1) included the main three-storey core block of the Victorian (1874) school house which had a rectangular plan with class rooms on the first and second floors. To the south of the main core block was a two storey block that was built in 1910. To the north is a single storey extension. Both buildings are constructed of sneaked sandstone blocks with harling on the gables and the street fronting elevations. Within the school grounds on the north side of the Victorian buildings is a 20th century block of single storey pre-fabricated school rooms.

1.3 Objectives

The objectives of the project were to carry out a drawn, photographic and written survey of the site, linked to a programme of building survey commensurate to Level 2 (English Heritage 2006). The following stages were undertaken to fulfil the requirements of the Level 2 survey.

- A Level 2 standing building survey including a drawn record of all external elevations and a comprehensive photographic record of the schools interior prior to the schools conversion and demolition
- Produce an illustrated survey report presenting the results of the building survey and archaeological evaluation.
- Establish any further mitigation work based on the results of the survey if considered appropriate.

A desk-based assessment was not carried out as one had already been undertaken by the Royal Commission on Ancient and Historical Monuments of Scotland (RCAHMS) as part of their *Threatened Building Survey Programme* 2011.

2. METHODOLOGY

2.1 General

An effective standard for this type of project has been established by previous building recording conducted by CFA. Recording of all structural elements was carried out following established CFA methodology and included standard standing building record sheets, sketch drawing, photographic survey and measured survey. CFA follows the Codes and appropriate Standards set down by the Institute for Archaeologists. Recording conventions followed English Heritage (2006).

2.2 Building recording parameters

The survey requirements are listed in Table 1.

LOCATION	METRIC SURVEY	PHOTOGRAPHIC SURVEY
Main School core block- Exterior elevations	Level 2 record of all significant detail	Internal class rooms and divisions - Detailed Level 2
Rear single storey block	Level 2 record of all significant detail	Internal class rooms and divisions.- Detailed Level 2
20 TH Century pre-fabricated building	Level 2 record of all significant detail (street frontage only)	Level 1 general photographs
Annotated ground and floor plans	Measured unit classification linked to tabulated descriptions	N/A

Table 1. Survey requirements for Juniper Green Primary School.

A Level 2 Building Survey was carried out (English Heritage 2006). This is a descriptive record supported by architectural drawings and plans to allow conclusions regarding the development and major alterations/additions over time. A detailed photographic record supported the survey. A written descriptive record of each elevation was made in line with the described level of survey. Standard CFA pro-forma recording sheets were completed.

CFA used a Nikon D300 camera to obtain high resolution images of specific architectural features. An appropriate photographic record was made of all external elevations. The interior of the building was also photographed. Important fixtures and fittings were photographed in detail and cross-referenced to the elevation drawings. A list of the photographs taken are appended at the rear of this report. A selection of images that best portray the character of the school have also been included in this report.

Metric Survey

The client's scaled architectural drawings were sufficiently detailed and suitable for inclusion in the final report. All elevation drawings and interior floor plans were checked for accuracy and any additional features such as blocking work, scars and other historical features were added for completion.

Floor plans

Annotated ground, first and second floor plans have been produced and include unit classifications linked to a summary table describing form, function and room layout including length x breadth measurements. Each unit is cross-referenced to the photographic record appended at the rear of the report.

Recording constraints

The only recording constraints at the time of the survey was the lack of access to the interior of the 20th century prefabricated building, to the basement on the SE elevation and to Unit 13 within the school (see Fig 2a).

3. SURVEY RESULTS

3.1 Exterior Elevations

Introduction

The school complex has a rough 'Z' shaped plan and comprises a main 2-storey 'L' shaped school building and an outshot single storey block on the north-west side. The main school building comprises two wings. One is aligned SW-NE which contains the core central hall and classrooms. The other wing is aligned NW-SE and houses classrooms accessed via a main entrance. A three-storey extension is situated to the north-west and houses the stairwell and offices. The outshot single storey block on the north-west side houses a single hall (Unit 12). For clarity the SW-NE aligned block will be referred to in the text as the central block, the NW-SE aligned block will be referred to as the south block and the outshot single storey block will be referred to as the north block. The elevations will be described below from left to right and will discern between the different component blocks of the school complex.

Exterior architectural descriptions - North-west facing elevation (Fig 2a, Plate 1)

The NW facing elevation faces out into the playground and measures 29.9m wide and 7.7m high at the wall head. The elevation comprises the gable of the north block, the side of the central block and the stepped gable of the south block.

The north block gable measures 7.65m wide and 3.5m high and is built on a low stone scarcement and is harled and painted. It has two windows with red sandstone sills.

The elevation of the central block measures 13.4m wide and 7.7m high. All exposed stone in the main build is red sandstone. The lower storey is sneck bonded with long and short ashlar quoins at the corners. The face of the second storey is harled and painted and is framed by quoins. The lower storey has four windows which are framed by ashlar quoins and large lintels and sills. The upper storey has two tall windows framed by ashlar quoins which extend above the wall head and into gabled dormers. A large three paned rectangular window is set in the centre of the upper storey, fitted with three panes and framed by ashlar quoins and a thin sill.

The stepped gable of the south block abuts the SW elevation of the central block and is set back from it. It has a pitched profile and measures 4.7m wide. The advanced gable is 10.5m high at the apex and 7.8m high at the wall head. It is built of snecked red sandstone to the top of the first storey, and is harled and painted above. The profile of the gable is pitched and asymmetric; its SE facing side abutting the NW facing gable of the central block. It features a red sandstone framed window on the third storey. Beneath this are two ashlar quoin framed windows at second storey level.

The ground floor level of the gable is obscured by a modern extension which encloses an entrance and houses a toilet block. The gable measures 3.2m wide and 3.4m high and is harled and painted. It is flat roofed and features a window with a red sandstone sill. A gap between the north block and the central block has been covered by a similar modern extension which houses a toilet block and encloses an entrance. It is

built of two courses of moulded red sandstone effect blocks and is harled above. It is flat roofed and features a double window with a raised margin and red sandstone sill.

Exterior architectural descriptions – North-east facing elevation (Fig 2b, Plate 3)

The NE facing elevation measures 38m wide and faces into a narrow alley bounding the neighbouring property. It is comprised of part of the side of the south block, the twin gables of the central block and the side of the north block.

The south half of the elevation of the south block is visible and measures 8.3m wide and 8.5m high to the wall head. It is built of snecked red sandstone to c.1.9m high and is harled above. An outshot entrance occupies the corner between the south block and the SE facing elevation of the central block. It measures 4.3m wide and 8.7m high and is flat roofed. It features two windows which are both framed by red sandstone.

The elevation of the central block is formed by an asymmetric ‘M’ shaped roofline with a flat roofed section connected to the north block, and a third gable set back from the front of the elevation. The wall has sneck-bonded red sandstone at its base to a height of 1.5m and is harled above. It features two vertical windows with raised red sandstone margins, and a Palladian window. A red sandstone chimney stack extends from the right hand gable to a height of 7.6m. Set back from the front face of the elevation is the main two-storey gable of the central block. It measures 8.9m wide and is 7.7m to the wall head and 11.9m to the apex. It is harled and painted and features a red sandstone chimney stack at the gable apex.

The elevation of the north block measures 12.6m wide and 3.6m high. It is harled and painted and features four windows, one which extends into a central gabled dormer capped with a red sandstone cornice.

Exterior architectural descriptions - South-east facing elevation (Fig 2c, Plates 4-5)

The elevation faces across a small playground and onto the street. It comprises the gable of the south block and the side of the central block.

The elevation of the south block comprises the main gable and side entrance. The gable is pitched and measures 8.7m wide and 8.7m high to the wall head and 11.8m high to the apex. The main build is the same snecked sandstone to a height of 1.9m and is painted and harled above. The gable has red sandstone raised margins and features two windows at ground floor level and two windows at first floor level. An oval window framed with decorative red sandstone is situated beneath the apex. Two air vents are located at sub-floor level on both the ground and first floors, framed by ashlar quoins. Set back from the gable on its right hand side is the main entrance doorway occupying the corner between the south block and the central block. It measures 2.4m wide and 8.7m high, and is harled and painted white. It features a doorway framed by raised ashlar margins and a decorated lintel with thistles at each side and ‘GIRLS’ set in the centre. The doorway is accessed by four pale sandstone steps. A window with raised red sandstone margins is set at first floor level.

The elevation of the central block forms the block’s side and measures 18.8m wide and 4.6m high to the wall head. The build pattern of the south range’s SE facing gable

is continued using snecked red sandstone to a height of c.1.9m and harled above. The elevation features two pitched gabled dormers, each of which have three windows below and framed by raised red ashlar margins and capped with a decorative semi-circular pediment above the central window. Three windows on the right also have raised margins. Sandstone steps leading to a sub-ground level basement are present at the left hand side of the wall. The elevation at the basement level is the same red sneck bonded sandstone and contains a window and a doorway, both of which are framed by ashlar quoins.

Exterior architectural descriptions – South-west-facing elevation (Fig 2d, Plate 2)

This elevation faces directly onto the street and measures 38.8m wide. It comprises the entire side of the south block, a gable of the central block and a side of the north block.

The elevation of the north block measures 9.6m wide and 3.5m high. It is built on a low stone scarcement and is harled and painted. It has three windows with red sandstone sills. The central window extends above the wall head into a gabled dormer.

Part of the gable of the central block is visible, measuring 5.3m wide and 7.7m m high at the wall head and 11.9m at the apex. The build is the same red sandstone to the height of the second storey and harled and painted above. The centre of the gable features a tall semi-circular arched window and three windows on the ground floor level. The wall features a relieving arch spanning the top of three ground floor windows. The bottom of the wall is obscured by the modern extension screening an entrance and containing a toilet block.

The elevation of the south block measures 29.2m wide and comprises the side of a small modern extension, a three storey outshot gable on the NW end of the south block and the main two storey south block. The modern extension measures 5.3m wide by 3.4m high and has a flat roof. It is built of moulded red sandstone effect blocks to 1m high and harled and painted above. It features a double window with a raised red sandstone margin.

The three storey outshot gable measures 4.8m wide and 7.8m high at the wall head. It is built of sneck bonded red sandstone to the second storey, the third being harled. The ground floor has two windows, the second storey has a single window and the upper floor has a single window extending to a gabled dormer capped by a red ashlar semi-circular pediment. All the windows are framed by ashlar quoins. The elevation of the main two storey south block measures 19.1m wide and 8m high to the wall head. The build of the main south block is the same as that of the SE facing elevation with sneck bonded red sandstone to c.1.8m high and harled and painted walls above. The lower floor features five windows which have raised ashlar margins. The upper storey features three sets of windows. The leftmost window is a small double window. To its right is a pair of double windows set in an ashlar housing which extend above the wall head into a gabled dormer which is built of red ashlar and has a harled face with red ashlar quoins. The central ashlar pillar is capped by a carved plaque which reads 'CSB 1910'. At the right hand end of the wall is a window comprising two

panes either side of a central tall window extending above the wall head into a red ashlar semi-circular pediment.

Roof layout and description

As the school complex is made up three identifiable blocks with a complex roof layout, the description will be separated into three blocks.

The roof of the main south block is pitched with grey slates and red ashlar skews on each gable. It features two gabled dormers on its SW facing side. The outshot gable to the north-west is also pitched with red ashlar skews and covered in grey slates. It features a gabled dormer on its SW facing side. The NE facing side of the south block above the entrance and corridor (Unit 3) is flat roofed and features a square light vent.

The central block features three main pitched roofs and flat roofed area connected to the north block. The main central hall which contains Unit 17 is pitched and covered by sloping rooflights at the SW end and grey tiles to the SE. The SE gable of this roof has red ashlar skews. The roof on the NW side of the central block is pitched and covered with grey slates and has red ashlar skews on the gables. The NW facing side has two gabled dormers. The roof covering the classroom on the SE side (Units 14, 15 & 16) is also pitched, covered in grey slates and has ashlar skews at the SW gable. It features two gabled dormers on its SE facing side.

The small L shaped gap between the central block and the north block which contains Unit 11 has a flat roof with two light vents.

The north block has a gabled style roof which is covered with grey slates. The SW and NE facings sides have gabled dormers. The ridge features a chimney with a decorative cap.

3.2 Layout Plan and interior descriptions

The school interior floor layout plan is produced as Figures 3a-3c which includes unit numbers and a photo location key. A selection of interior photographs is provided in Plates 8-20. The interior of the school is described fully in Table 2 below.

Unit	Dimensions (Lx B x H) (mm)	Architectural Description	Photo No
1	7586 x 7251 x 4415	Classroom. Timber floored. Tongue and groove panelled lower walls, plastered above. Splayed windows fitted with sash and case timber framed windows. Small kitchen area fitted in the corner of classroom.	1-4
2	7298 x 6356 x 4471	Classroom. Timber and linoleum covered floor. Tongue and groove panelled lower walls. Splayed windows fitted with sash and case timber framed windows. Small kitchen area fitted in the corner of classroom.	5-8
3	12460 x 2083 x 4470	Hall. Linoleum floor and tongue and groove panelling on lower walls. Moulded arch at SW end.	9,10
4	7733 x 2398 x 4553	WC. Communal infant's toilet block including child-sized WC cubicles and urinals.	11-13

5	2510 x 3540 x 2423	Understair cupboard.	16
6	7001 x 3712 x 4557	Entrance hall/base of stairwell. Linoleum floor. Tongue and groove panelling on lower walls. Separated from Unit 17 by modern hardwood and glass partition screens. Stair rises in a double flight and is fitted with iron banister rails and a hardwood handrail.	14, 15
7	4533 x 1622 x 2736	Entrance corridor. Quarry tiled floor, modern fittings.	19, 20
8	4924 x 2717 x 2725	WC. Communal WC with modern fittings for adults. Quarry tiled floor. Sash and case windows are present on the internal SE and NE facing elevations.	21
9	4731 x 2593 x 2867	Office. Small office with tongue and groove cladding on lower walls. Features a tiled fireplace in SW corner and a splayed window fitted with a timber sash and case frame.	17, 18
10	12316 x 5704 x 4410	Classroom. Timber and linoleum floor. Tongue and groove panelled lower walls. Splayed windows on SE facing internal side elevation fitted with sash and case timber frames. Arched windows at both ends. Fireplaces incorporated into east and south corners of the room. Small kitchen area fitted at the SW end of classroom.	22-25
11	5002 x 1763 x 2787	Corridor leading from Unit 17 to Unit 12 and to exit door on NW side of the school. Quarry tiled floor and concrete rendered walls.	26, 27
12	12163 x 6782 x 4230	Classroom/Assembly hall. Features a parquet tile floor, tongue and groove timber panelling on lower walls. Raised stage at NW facing elevation which is bounded by a timber screen. Splayed windows on SE facing internal side elevation fitted with sash and case timber frames.	28-31
13	N/A	Office. No access.	N/A
14	6827 x 5985 x 4673	Classroom. Timber covered floor. Tongue and groove panelled lower walls. Splayed windows fitted with sash and case timber framed windows.	32-35
15	6803 x 5720 x 4677	Classroom. Timber floor. Tongue and groove panelled lower walls. Splayed windows fitted with sash and case timber framed windows.	36-39
16	6793 x 6097 x 4711	Classroom. Timber and linoleum covered floor. Tongue and groove panelled lower walls. Splayed windows fitted with sash and case timber framed windows.	40-42
17	18745 x 5129 x 3818 (wall head) 6089 (apex)	Main hall. Linoleum floor, timber tongue and groove panelling on lower walls. Internal sash and case window to Unit 10. Apex roof profile and solid timber king post roof truss with supporting iron straps. The layout includes modern timber built screens to direct the movement of children, and the NW end of the hall is fitted out as a cloakroom.	43-49
18	2661 x 3633 x 2486	Office with attached WC. Modern decor and fittings including a WC fitted on the SE facing elevation.	50, 51
19	4153 x 824 x 2486	WC. Communal WC off Unit 11 with modern fittings and original urinal trough. Features a quarry tiled floor.	
20	5316 x 4171 x 3260	Upper landing, 1 st floor. Accessed from the top of	52-54

		the stairs. Linoleum floored and with tongue and groove panelling on lower walls. The landing is lit by natural light from a roof light.	
21	N/A	Loft space. Accessed through the door on SW facing elevation of Unit 24. Roof truss comprising a simple truss with single braces at each side. A timber built ventilation chimney is set roughly centrally within the loft and exits through the roof apex.	75-76
22	12024 x 5624 x 4928	Classroom, main hall. Large classroom with timber floor and plastered walls. Ceiling features a hipped profile with corbel mounted roof truss. Timber clad cupboards are incorporated into the SW facing internal elevation.	55-58
23	3504 x 4343 x 2675	Staffroom. The only attic level room which is accessed from the top of the stairs from Unit 20. Wallpapered walls and ceiling, timber floor. Features a tiled fireplace in the SW corner of the room and an integral cupboard along the SE facing elevation.	73,74
24	10850 x 2057 x 3268	Corridor. Main 1st floor corridor leading from the landing to Units 27 & 29. Tongue and groove clad lower walls, linoleum floor and plastered ceiling. Incorporated cupboard at the SE end.	59,60
25	2987 x 1162 x 3268	WC. Individual WC with modern fittings.	71
26	2987 x 1162 x 3268	WC. Individual WC with modern fittings.	72
27	7611 x 7577 x 4219	Classroom. Timber floored with tongue and groove timber cladding on lower walls. Timber framed sash and case windows. Belfast sink fitted at front of classroom on SE facing internal elevation.	62-65
28	4225 x 2448 x 3493	WC. Communal WC with modern cubicles and urinals.	70
29	7329 x 6361 x 4257	Classroom. Timber floored with tongue and groove timber cladding on lower walls. Timber framed sash and case windows. Modern kitchen units fitted at front of classroom on SE facing internal elevation. Doorway access to Unit 28 is on SE facing elevation.	66-69

Table 2: Interior dimensions and summary description of the rooms within the school.

3.3 20th Century Prefabricated Outbuilding (Plate 7)

A prefabricated outbuilding stood in the school playground to the north of the main school complex. It measured 21.9m long by 7.4m wide and 3.1m high. It was built on a brick base and constructed from prefabricated panels and had a flat roof. It was boarded up and in poor condition. The SE facing elevation had a central main entrance door with brick and concrete steps. The NW facing elevation had a doorway at its left hand side with concrete steps. The NE facing elevation was to the rear of the outbuilding and had two large windows which were boarded over. The SW facing elevation had an entrance door with concrete and brick steps. A square ventilation chimney vent protruded from the roof.

4. CONCLUSION AND RECOMMENDATIONS

4.1 Conclusion

The survey results confirm that the exterior of the school has altered little since it was first constructed in 1874 and it is typical of a Victorian school constructed in a 'revival style' that incorporates different architectural embellishments. The windows are tall to allow natural light into the classrooms, some of which have pediments. The gables are emphasised by the use of broad coping stones. The architectural details of the south block constructed in 1910 with its Palladian-style upper windows on the SW facing elevation are in keeping with the rest of the Victorian school buildings.

The interior of the school has been modernised to suit the requirements of modern teaching. Some period features still exist including the exposed roof trusses in Units 17 and 22, original fireplaces in Units 10 and 23, and the timber clad lower walls throughout the school.

4.2 Recommendations

In line with the Written Scheme of Investigation, the Level 2 standing building recording survey has adequately described, photographed and linked all the significant architectural elements to a series of floor plans and elevations of the school complex.

No further building recording work is required prior to the part demolition of the school complex.

The trial trench evaluation will be undertaken following demolition of the school buildings and the results will be reported under separate cover.

An entry in Discovery and Excavation in Scotland and OASIS is considered sufficient to disseminate the results of the building survey to a wider public audience.

5. REFERENCE

English Heritage 2006 *Recording Historic Buildings. A Descriptive Specification*, 3rd edition. London.

APPENDIX 1: PHOTOGRAPHIC REGISTER

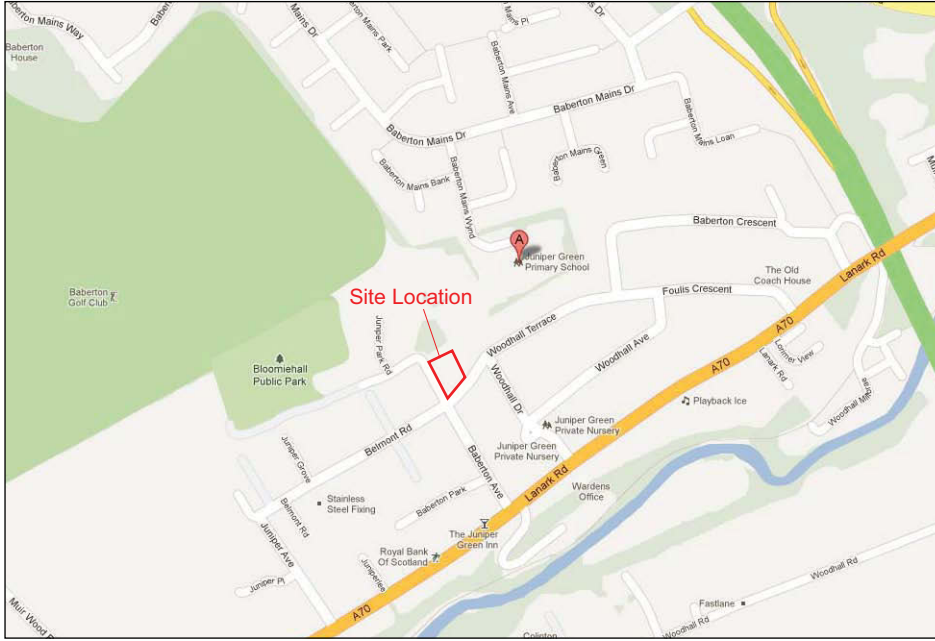
Photo No.	Unit No/Description	Taken From
1	Unit 1, Classroom	NW
2	Unit 1, Classroom	NE
3	Unit 1, Classroom	SE
4	Unit 1, Classroom	SW
5	Unit 2, Classroom	NW
6	Unit 2, Classroom	NE
7	Unit 2, Classroom	SE
8	Unit 2, Classroom	SW
9	Unit 3, Hall	NW
10	Unit 3, Hall	SE
11	Unit 4, Hall	NE
12	Unit 4, Hall	NE
13	Unit 4, Hall	NE
14	Unit 6, Entrance Hall	NE
15	Unit 6, Entrance Hall	NW
16	Unit 5 Undersirs Cupboard	SW
17	Unit 9, Office	NE
18	Unit 9, Office	NW
19	Unit 7, Entrance Corridor	NW
20	Unit 7, Entrance Corridor	SE
21	Unit 8, Communal Toilet	SE
22	Unit 10, Classroom	SW
23	Unit 10, Classroom	W
24	Unit 10, Classroom	N
25	Unit 10, Classroom	N
26	Unit 11, Corridor	SE
27	Unit 19, Communal Toilet	N
28	Unit 12, Classroom/Assembly Hall	SE
29	Unit 12, Classroom/Assembly Hall	SW
30	Unit 12, Classroom/Assembly Hall	NW
31	Unit 12, Classroom/Assembly Hall	E
32	Unit 14, Classroom	SW
33	Unit 14, Classroom	NW
34	Unit 14, Classroom	NE
35	Unit 14, Classroom	SE
36	Unit 15, Classroom	SW
37	Unit 15, Classroom	NW
38	Unit 15, Classroom	NE
39	Unit 15, Classroom	SE
40	Unit 16, Classroom	NW
41	Unit 16, Classroom	NE
42	Unit 16, Classroom	SE
43	Unit 17, Main Hall	SW
44	Unit 17, Main Hall	SW
45	Unit 17, Main Hall	SW
46	Unit 17, Main Hall	W
47	Unit 17, Main Hall	N
48	Unit 17, Main Hall	N
49	Unit 17, Main Hall	W
50	Unit 18, Office	NW
51	Unit 18, Office	NE
52	Unit 6 stair	NW
53	Unit 20, Upper Landing	SW
54	Unit 20, Upper Landing	W

55	Unit 22, Classroom	SW
56	Unit 22, Classroom	W
57	Unit 22, Classroom	NE
58	Unit 22, Classroom	W
59	Unit 24, Corridor	NW
60	Unit 24, Corridor	SE
61	Unit 24 Corridor	NW
62	Unit 27, Classroom	SE
63	Unit 27, Classroom	NE
64	Unit 27, Classroom	N
65	Unit 27, Classroom	S
66	Unit 29, Classroom	SE
67	Unit 29, Classroom	NE
68	Unit 29, Classroom	NW
69	Unit 29, Classroom	S
70	Unit 28, Communal toilet	S
71	Unit 26, Toilet	NE
72	Unit 25, Toilet	NE
73	Unit 23, Staffroom	N
74	Unit 23, Staffroom	SE
75	Unit 21, Loft Space	SW
76	Unit 21, Loft Space	SW
77	General view of central and south block	W
78	General view of central and south block	W
79	Elevation of central block	NW
80	Elevation of central block	NW
81	Elevation of north block	SW
82	North block and central block	NW
83	North block	W
84	Elevation of north block	NW
85	Oblique view of NE facing elevation	N
86	Oblique view of NE facing elevation and NW facing elevation of north block	N
87	Oblique view of Palladian windows, NE facing elevation	E
88	General view of prefabricated concrete shed on east side of school	E
89	Oblique view of SE facing elevation	E
90	Oblique view of SE facing elevation, central block	S
91	Detail of gabled dormer and windows, SE facing elevation, central block	SE
92	NE facing elevation, south block	NE
93	Stairs to cellar, SE facing elevation, central block	NE
94	NE facing elevation, south block	NE
95	Detail of doorway, SE facing elevation, south block	SE
96	Detail of doorway, SE facing elevation, south block	SE
97	SE facing elevation	SE
98	SE facing elevation	SE
99	SE facing elevation, south block	SE
100	General view of south and central block from the street	S
101	General view of south and central block from the street	S
102	General view of south block from the street	SW
103	General view of south block from the street	SW
104	General view of south block from the street	SW
105	SW facing elevation, south block	SW
106	SW facing elevation, south block	W
107	General view of south and central blocks	W
108	General view of south and central blocks	W
109	General view of south and central blocks	W
110	Prefabricated outbuilding	SE

111	Prefabricated outbuilding	S
112	Prefabricated outbuilding	NW
113	Prefabricated outbuilding	N
114	Stone and brick outbuilding at the north of the playground	S
115	Stone and brick outbuilding at the north of the playground	SW
116	Interior of stone and brick outbuilding	NE
117	Interior of stone and brick outbuilding	SW
118	Partially collapsed wall within playground	W
119	Detail of gable, SW facing elevation, central block	SW
120	Detail of gable, SW facing elevation, central block	SW
121	Detail of dormer gable and plaque, SW facing elevation, central block	SW
122	Detail of dormer gable and plaque, SW facing elevation, central block	SW
123	General view of semi-circular arched dormer, SW facing elevation, central block	SW
124	Detail of break in build, SW facing elevation, south block	SW
125	Detail of break in build between modern toilet block extension and SW facing elevation, south block	SW
126	Detail of roof, north block	SW
127	Detail of partially collapsed wall in school playground	SE
128	General view of north block	NW
129	General view of north block	NW
130	Detail of roof, north block	NW
131	Detail of roof, north block	NW
132	Upper wall and roof of NW facing elevation, central block	N
133	General view of prefabricated building	N
134	Detail of chimney, NE facing elevation	N
135	Detail of anti-climbing guards on downpipes, NE facing elevation	NE
136	Detail of central Palladian window, NE facing elevation	NE
137	Detail of 'GIRLS' plaque on main doorway, SE facing elevation	SE
138	Detail of rose window, SE facing elevation, south block	SE
139	SE facing elevation, south block	SE

APPENDIX 2: DISCOVERY & EXCAVATION IN SCOTLAND ENTRY

LOCAL AUTHORITY:	City of Edinburgh
PROJECT TITLE/SITE NAME:	Juniper Green Primary School, Juniper Green, Edinburgh
PROJECT CODE:	JUGS
PARISH:	Currie
NAME OF CONTRIBUTOR:	S. Mitchell
NAME OF ORGANISATION:	CFA Archaeology Ltd
TYPE(S) OF PROJECT:	Standing Building Survey
NMRS NO(S):	
SITE/MONUMENT TYPE(S):	N/A
SIGNIFICANT FINDS:	N/A
NGR (2 letters, 6 figures)	NT 19676 68745
START DATE (this season)	May 2012
END DATE (this season)	May 2012
PREVIOUS WORK (incl. DES ref.)	n/a
MAIN (NARRATIVE) DESCRIPTION: (May include information from other fields)	<p>A standing building survey (level 2) was carried out by CFA Archaeology Ltd prior to alterations at Juniper Green Primary School, Juniper Green, Edinburgh on behalf of Dundas Building Co. Ltd.</p> <p>The school is situated at the corner of Woodhall Terrace and Baberton Avenue and comprises a complex of Victorian buildings dating from 1874 to 1910. The school has a 'Z' shaped layout and has two main storeys a third storey contained within a stairwell. The lower half of the school is built mainly of sneck-bonded red sandstone with ashlar quoins at corners, windows and doors. The upper half is harled. The interior contains numerous classrooms, a large main hall and a few offices and cupboards. Original roof trusses are visible in two of the rooms.</p>
PROPOSED FUTURE WORK:	Archaeological Evaluation
CAPTION(S) FOR ILLUSTRS:	None
SPONSOR OR FUNDING BODY:	Dundas Building Co. Ltd.
ADDRESS OF MAIN CONTRIBUTOR:	CFA Archaeology Ltd, Old Engine House, Eskmills Park, Musselburgh, EH21 7PQ.
EMAIL ADDRESS:	cfa@cfa-archaeology.co.uk
ARCHIVE LOCATION (intended/deposited)	Archive to be deposited in NMRS, Reports lodged with SMR and NMRS



Key:



Fig. No:	1	Revision:	A	Client:	Dundas Building Co Ltd
Title: Location Map					
Project: Juniper Green Primary School Juniper Green, Edinburgh Standing Building Survey					

CFA
ARCHAEOLOGY LTD

CFA ARCHAEOLOGY LTD
Unit 22
Moorland's Business Centre
Balme Road, Cleckheaton
West Yorkshire, BD19 4EZ

T: 01274 864245
F: 01274 878494
yorkshire@cfa-archaeology.co.uk

Drawn by:	Checked:	Report No:
LW	LW	2057



Fig 2a - Northwest-facing elevation



Fig 2b - Northeast-facing elevation

Unrendered Snecked Sandstone
 Harled Render



CFA
 ARCHAEOLOGY LTD
 CFA ARCHAEOLOGY LTD
 The Old Engine House
 Eskmills Park
 Musselburgh
 East Lothian, EH21 7PQ
 t: 0131 273 4380
 f: 0131 273 4381
 e: info@cfa-archaeology.co.uk
 w: www.cfa-archaeology.co.uk

Fig. No:	2a-b	Revision:	A	Drawn by:	LW	Checked:	LW	Report No:	2057	Client:	Dundas Building Co Ltd
Title:	Elevations					Project:	Juniper Green Primary School, Juniper Green, Edinburgh		Scale at A3:	1:150	

The copyright in this document (including its electronic form) shall remain vested in CFA Archaeology Ltd (CFA) but the Client shall have a licence to copy and use the document for the purpose for which it was provided. CFA shall not be liable for the use by any person of this document for any purpose other than that for which the same was provided by CFA. This document shall not be reproduced in whole or in part or relied upon by third parties for any use whatsoever without the express written authority of CFA.

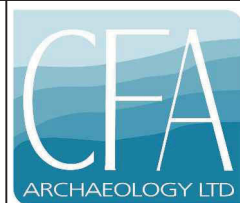


Fig 2c -Southeast-facing elevation



Fig 2d - Southwest-facing elevation

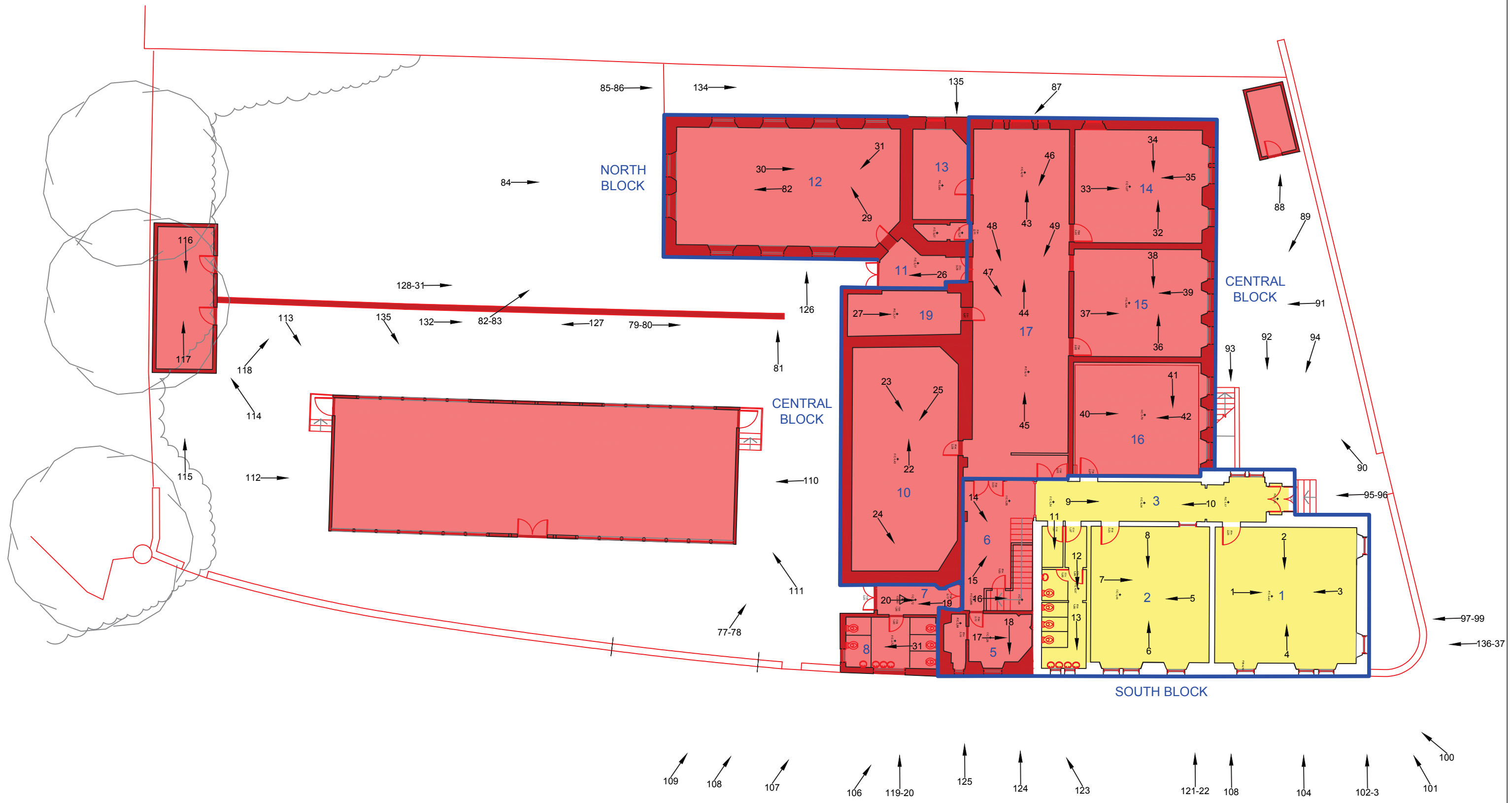
Unrendered Snecked Sandstone
 Harled Render



CFA ARCHAEOLOGY LTD
 The Old Engine House
 Eskmills Park
 Musselburgh
 East Lothian, EH21 7PQ
 t: 0131 273 4380
 f: 0131 273 4381
 e: info@cfa-archaeology.co.uk
 w: www.cfa-archaeology.co.uk

Fig. No: 2c-d	Revision: A	Drawn by: LW	Checked: LW	Report No: 2057	Client: Dundas Building Co Ltd
Title: Elevations			Project: Juniper Green Primary School, Juniper Green, Edinburgh		Scale at A3: 1:150

The copyright in this document (including its electronic form) shall remain vested in CFA Archaeology Ltd (CFA) but the Client shall have a licence to copy and use the document for the purpose for which it was provided. CFA shall not be liable for the use by any person of this document for any purpose other than that for which the same was provided by CFA. This document shall not be reproduced in whole or in part or relied upon by third parties for any use whatsoever without the express written authority of CFA.



- Buildings to be demolished
- Buildings to be retained
- 8** Unit Numbers (see table 2)
- 68** → Photo Location



CFA
ARCHAEOLOGY LTD

CFA ARCHAEOLOGY LTD
The Old Engine House
Eskmills Park
Musselburgh
East Lothian, EH21 7PQ

t: 0131 273 4380
f: 0131 273 4381
e: info@cfa-archaeology.co.uk
w: www.cfa-archaeology.co.uk

Fig. No: 3a	Revision: A	Drawn by: LW	Checked: LW	Report No: 2057	Client: Dundas Building Co Ltd
Title: Ground floor plan showing photo locations			Project: Juniper Green Primary School, Juniper Green, Edinburgh		Scale at A3: 1:200

The copyright in this document (including its electronic form) shall remain vested in CFA Archaeology Ltd (CFA) but the Client shall have a licence to copy and use the document for the purpose for which it was provided. CFA shall not be liable for the use by any person of this document for any purpose other than that for which the same was provided by CFA. This document shall not be reproduced in whole or in part or relied upon by third parties for any use whatsoever without the express written authority of CFA.

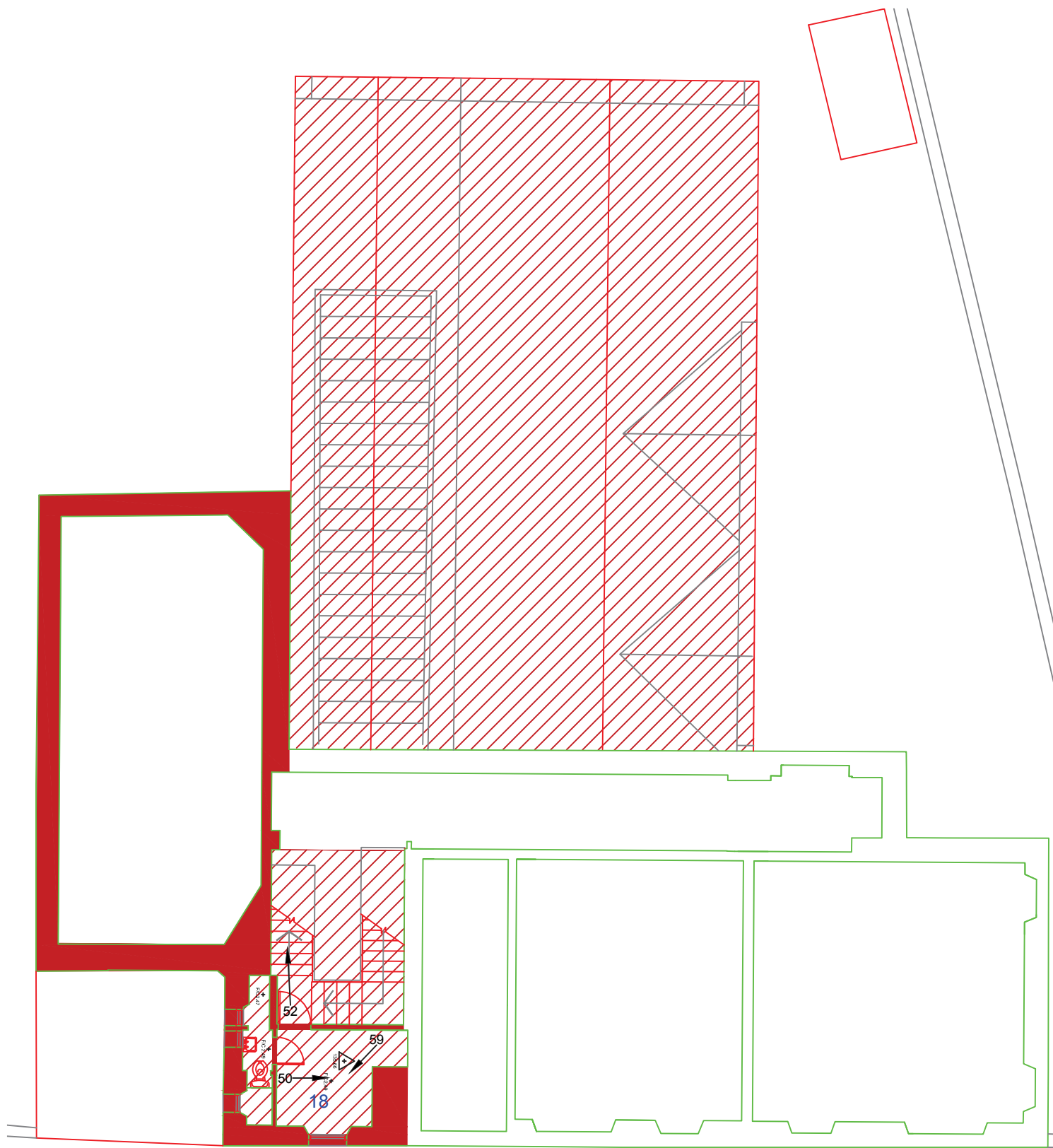


Fig 3b - First Floor Plan

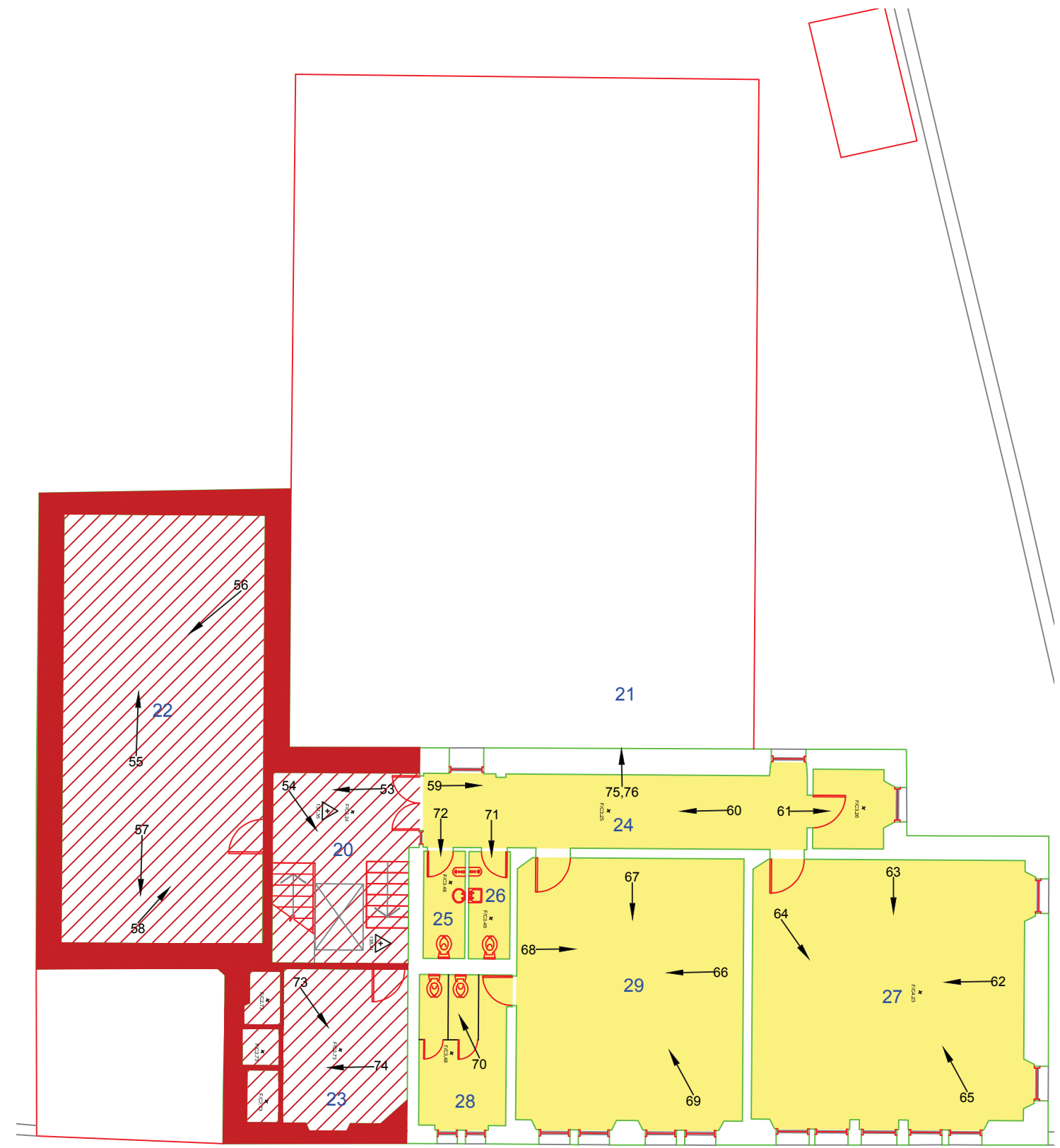
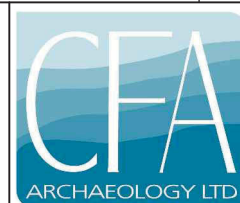


Fig 3c - Second Floor Plan

8 Unit Numbers (see table 2)
 68 → Photo Location



CFA ARCHAEOLOGY LTD
 The Old Engine House
 Eskmills Park
 Musselburgh
 East Lothian, EH21 7PQ
 t: 0131 273 4380
 f: 0131 273 4381
 e: info@cfa-archaeology.co.uk
 w: www.cfa-archaeology.co.uk

Fig. No: 3b-c	Revision: A	Drawn by: LW	Checked: LW	Report No: 2057	Client: Dundas Building Co Ltd
Title: First and second floor plans showing photo locations			Project: Juniper Green Primary School, Juniper Green, Edinburgh		Scale at A3: 1:200

The copyright in this document (including its electronic form) shall remain vested in CFA Archaeology Ltd (CFA) but the Client shall have a licence to copy and use the document for the purpose for which it was provided. CFA shall not be liable for the use by any person of this document for any purpose other than that for which the same was provided by CFA. This document shall not be reproduced in whole or in part or relied upon by third parties for any use whatsoever without the express written authority of CFA.



Plate 1 - Oblique view of NW and SW-facing elevations, central and south blocks



Plate 3 - NE facing elevation



Plate 2 - SW facing elevation, south block



Plate 4 - SE facing elevation, central block

Plates:	1-4	Revision:	A	Project:	Juniper Green Primary School, Juniper Green, Edinburgh
Drawn by:	LW	Checked:	LW	Report No:	2057
				Client:	Dundas Building Co Ltd



CFA
ARCHAEOLOGY LTD

CFA ARCHAEOLOGY LTD
The Old Engine House
Eskmills Park, Musselburgh
East Lothian, EH21 7PQ

T: 0131 273 4380
F: 0131 273 4381
e: info@cfa-archaeology.co.uk
w: www.cfa-archaeology.co.uk

The copyright in this document (including its electronic form) shall remain vested in CFA Archaeology Ltd (CFA) but the Client shall have a licence to copy and use the document for the purpose for which it was provided. CFA shall not be liable for the use by any person of this document for any purpose other than that for which the same was provided by CFA. This document shall not be reproduced in whole or in part or relied upon by third parties for any use whatsoever without the express written authority of CFA.



Plate 5 - SE facing elevation



Plate 6 - General view of north block



Plate 7 - General view of prefabricated building



Plate 8 - Unit 1 - Classroom, kitchen area

Plates:	5-8	Revision:	A	Project:	Juniper Green Primary School, Juniper Green, Edinburgh
Drawn by:	LW	Checked:	LW	Report No:	2057
				Client:	Dundas Building Co Ltd



CFA ARCHAEOLOGY LTD
The Old Engine House
Eskmills Park, Musselburgh
East Lothian, EH21 7PQ

T: 0131 273 4380
F: 0131 273 4381

e: info@cfa-archaeology.co.uk
w: www.cfa-archaeology.co.uk

The copyright in this document (including its electronic form) shall remain vested in CFA Archaeology Ltd (CFA) but the Client shall have a licence to copy and use the document for the purpose for which it was provided. CFA shall not be liable for the use by any person of this document for any purpose other than that for which the same was provided by CFA. This document shall not be reproduced in whole or in part or relied upon by third parties for any use whatsoever without the express written authority of CFA.



Plate 9 - Unit 6 - Entrance hall and stairs



Plate 10 - Unit 7 - Entrance corridor



Plate 11 - Unit 10 - Classroom



Plate 12 - Unit 12 - Classroom/Assembly hall stage

Plates:	9-12	Revision:	A	Project:	Juniper Green Primary School, Juniper Green, Edinburgh
Drawn by:	LW	Checked:	LW	Report No:	2057
				Client:	Dundas Building Co Ltd



CFA
ARCHAEOLOGY LTD

CFA ARCHAEOLOGY LTD
The Old Engine House
Eskmills Park, Musselburgh
East Lothian, EH21 7PQ

T: 0131 273 4380
F: 0131 273 4381
e: info@cfa-archaeology.co.uk
w: www.cfa-archaeology.co.uk

The copyright in this document (including its electronic form) shall remain vested in CFA Archaeology Ltd (CFA) but the Client shall have a licence to copy and use the document for the purpose for which it was provided. CFA shall not be liable for the use by any person of this document for any purpose other than that for which the same was provided by CFA. This document shall not be reproduced in whole or in part or relied upon by third parties for any use whatsoever without the express written authority of CFA.



Plate 13 - Unit 14 - Classroom



Plate 15 - Unit 17 - Main hall and roof truss



Plate 14 - Unit 15 - Classroom



Plate 16 - Unit 20 - Top of stairs and landing

Plates:	13-16	Revision:	A	Project:	Juniper Green Primary School, Juniper Green, Edinburgh
Drawn by:	LW	Checked:	LW	Report No:	2057
				Client:	Dundas Building Co Ltd



CFA
ARCHAEOLOGY LTD

CFA ARCHAEOLOGY LTD
The Old Engine House
Eskmills Park, Musselburgh
East Lothian, EH21 7PQ

T: 0131 273 4380
F: 0131 273 4381
e: info@cfa-archaeology.co.uk
w: www.cfa-archaeology.co.uk

The copyright in this document (including its electronic form) shall remain vested in CFA Archaeology Ltd (CFA) but the Client shall have a licence to copy and use the document for the purpose for which it was provided. CFA shall not be liable for the use by any person of this document for any purpose other than that for which the same was provided by CFA. This document shall not be reproduced in whole or in part or relied upon by third parties for any use whatsoever without the express written authority of CFA.



Plate 17 - Unit 22 - Classroom



Plate 18 - Unit 27 - Classroom



Plate 19 - Unit 23 - Staffroom



Plate 20 - Unit 21 - Rooftruss and timber chimney vent

Plates:	17-20	Revision:	A	Project:	Juniper Green Primary School, Juniper Green, Edinburgh			CFA ARCHAEOLOGY LTD The Old Engine House Eskmills Park, Musselburgh East Lothian, EH21 7PQ T: 0131 273 4380 F: 0131 273 4381 e: info@cfa-archaeology.co.uk w: www.cfa-archaeology.co.uk
Drawn by:	LW	Checked:	LW	Report No:	2057			
The copyright in this document (including its electronic form) shall remain vested in CFA Archaeology Ltd (CFA) but the Client shall have a licence to copy and use the document for the purpose for which it was provided. CFA shall not be liable for the use by any person of this document for any purpose other than that for which the same was provided by CFA. This document shall not be reproduced in whole or in part or relied upon by third parties for any use whatsoever without the express written authority of CFA.								



JUGS-1



JUGS-2



JUGS-3



JUGS-4



JUGS-5



JUGS-6



JUGS-7



JUGS-8



JUGS-9



JUGS-10



JUGS-11



JUGS-12



JUGS-13



JUGS-14



JUGS-15



JUGS-16



JUGS-17



JUGS-18



JUGS-19



JUGS-20



JUGS-21



JUGS-22



JUGS-23



JUGS-24



JUGS-25



JUGS-26



JUGS-27



JUGS-28



JUGS-29



JUGS-30



JUGS-31



JUGS-32



JUGS-33



JUGS-34



JUGS-35



JUGS-36



JUGS-37



JUGS-38



JUGS-39



JUGS-40



JUGS-41



JUGS-42



JUGS-43



JUGS-44



JUGS-45



JUGS-46



JUGS-47



JUGS-48



JUGS-49



JUGS-50



JUGS-51



JUGS-52



JUGS-53



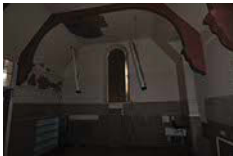
JUGS-54



JUGS-55



JUGS-56



JUGS-57



JUGS-58



JUGS-59



JUGS-60



JUGS-61



JUGS-62



JUGS-63



JUGS-64



JUGS-65



JUGS-66



JUGS-67



JUGS-68



JUGS-69



JUGS-70



JUGS-71



JUGS-72



JUGS-73



JUGS-74



JUGS-75



JUGS-76



JUGS-77



JUGS-78



JUGS-79



JUGS-80



JUGS-81



JUGS-82



JUGS-83



JUGS-84



JUGS-85



JUGS-86



JUGS-87



JUGS-88



JUGS-89



JUGS-90



JUGS-91



JUGS-92



JUGS-93



JUGS-94



JUGS-95



JUGS-96



JUGS-97



JUGS-98



JUGS-99



JUGS-100



JUGS-101



JUGS-102



JUGS-103



JUGS-104



JUGS-105



JUGS-106



JUGS-107



JUGS-108



JUGS-109



JUGS-110



JUGS-111



JUGS-112



JUGS-113



JUGS-114



JUGS-115



JUGS-116



JUGS-117



JUGS-118



JUGS-119



JUGS-120



JUGS-121



JUGS-122



JUGS-123



JUGS-124



JUGS-125



JUGS-126



JUGS-127



JUGS-128



JUGS-129



JUGS-130



JUGS-131



JUGS-132



JUGS-133



JUGS-134



JUGS-135



JUGS-136



JUGS-137



JUGS-138



JUGS-139