

CFA Archaeology Ltd

archaeological consultants

Advice on Archaeology & Planning

Environmental Impact Assessment

Intpretation, Design & Display

Finds/ Environmental Analysis

Field Evaluation & Excavation

Historic Building Recording

Site & Landscape Survey

Geophysical Survey

Water of Leith Flood Prevention Scheme Photographic Survey Report No. 1640

CFA ARCHAEOLOGY LTD

The Old Engine House
Eskmills Business Park
Musselburgh
East Lothian
EH21 7PQ

Tel: 0131 273 4380
Fax: 0131 273 4381
email: info@cfa-archaeology.co.uk
web: www.cfa-archaeology.co.uk

Author	Stuart Mitchell MA AIfA
Illustrator	Leeanne Whitelaw BSc MAAIS
Editor	Melanie Johnson MA PhD FSA Scot MIfA
Commissioned by	The City of Edinburgh Council
Date issued	June 2009
Version	1
OASIS Reference	cfaarcha1-60521
Planning Application No	-
Grid Ref	-

This document has been prepared in accordance with CFA Archaeology Ltd
standard operating procedures.

Water of Leith Flood Prevention Scheme

Photographic Survey

Report No. 1640

CONTENTS

1. Introduction	3
2. Methodology	4

APPENDICES

Appendix 1: Register of digital photographs	5
---	---

PLATES (Bound at rear)

1. Mill Lade adjacent to Edinburgh Sports Club
2. Mill Lade detail
3. Mill Lade detail
4. Mill Lade detail
5. Site 3: View up Water of Leith to weir
6. Site 3: View of front of weir
7. Site 7: View across top of Bridge with Eildon Street in background
8. Site 7: View up Water of Leith to bridge
9. Site 7: View down Water of Leith to bridge
10. Site 12: Colonies from Bell Place across Water of Leith
11. Site 12: Hugh Miller Place and Reid Terrace across Water of Leith
12. Site 12: View down Water of Leith with Bridge Place on right
13. Site 12: View across Water of Leith to Reid Terrace
14. Site 26: View across bridge towards Hawthornbank Lane
15. Site 26: View of bridge looking down Water of Leith
16. Site 31: Looking down Water of Leith towards Belford Bridge
17. Site 31: Belford Bridge from Water of Leith
18. Site 31: Detail under bridge arch looking up Water of Leith
19. Site 31: Looking down Water of Leith towards Belford Bridge
20. Site 46: View across both bridges
21. Site 46: View of south side of stone bridge
22. Site 54: St Mary's Bridge and Water of Leith
23. Site 54: St Mary's Bridge and Water of Leith
24. Site 57: Looking down Water of Leith to top of weir

25. Site 57: Front of weir
26. Site 58: View down Water of Leith to footbridge
27. Site 58: Detail of bridge
28. Site 62: View across stone bridge to Murrayfield
29. Site 62: Detail of stone bridge looking towards metal bridge
30. Site 62: View of metal bridge
31. Site 64: View down Water of Leith to the top of the weir
32. Site 64: Front of weir from Saughton Public Park
33. Site 66: View of Longstone Inn and Water of Leith from Longstone Road
34. Site 66: Back of Longstone Inn above Water of Leith
35. Site 66: Longstone Inn and mining village buildings on Longstone Road
36. Site 66: Back of Longstone Inn and mining village buildings
37. Site 67: View across bridge from Roseburn Cliff
38. Site 67: Detail of bridge
39. Site 68: View across bridge on north side
40. Site 68: Detail of plaque on north side of bridge
41. Site 68: View of North side of bridge from the old bridge (Site 67)

MAPS

Water of Leith Flood Defence Plan (Bound at rear)

1. INTRODUCTION

1.1 General

1.1.1 This report presents the results of a photographic survey undertaken by CFA Archaeology Ltd (CFA) during March and April 2009 at specified sites along the Water of Leith, Edinburgh. The work was commissioned by The City of Edinburgh Council.

1.1.2 A Written Scheme of Investigation (WSI), based upon discussions between John Lawson, City of Edinburgh Council Archaeology Service (CECAS) and CFA Archaeology Ltd was produced for works required during the development of the Water of Leith Flood Prevention Scheme. The WSI sets out CFA's methodology for the archaeological works to be carried out and has been produced to fulfil the requirements of CECAS

1.1.3 The work was project managed by John Lawson of City of Edinburgh Council Archaeology Service (CECAS).

1.1.4 Prior to the main works (Construction), due to start in Summer 2009, a number of sites were recorded by general photography. Site numbers refer to the Environmental Statement (See maps, bound at rear).

- Bridges **7, 26, 31, 46, 54, 58, 62, 67, 68**
- Weirs **3, 57, 64**
- The view of the Longstone Inn (**66**) will be recorded by a brief photographic survey
- The view of the 19th century mining village at Longstone will be recorded.
- The view of the colonies (**12**) will be recorded by a brief photographic survey. This will be repeated following the completion of the flood prevention works in this area.
- The Coltbridge mill lade where it survives between the Edinburgh Sports Club and the Dean Gallery.

1.2 Objectives

1.2.1 The objectives of the project were:

- To produce a photographic and written record of selected bridges and buildings whose setting will be affected by the construction of the Water of Leith flood defences.

2. METHODOLOGY

- 2.1 CFA Archaeology Ltd follows the Institute for Archaeologists' Code of Conduct, Standards and Guidance as appropriate. All survey records are maintained according to the IfA's Standards on Building Recording and CFA's in-house methodology.
- 2.2 All photography was carried out using Nikon digital SLR cameras. A record of the photographs was maintained and forms Appendix 1 of this report.
- 2.3 A representative selection of the photographs are reproduced within this report. A CD containing all the images will be supplied to the City of Edinburgh Council Sites and Monuments Record.

3. RESULTS

- 3.1 A representative selection of photographic images are bound at the rear, with photographic registers included as Appendix 1.
- 3.2 A summary gazetteer of the sites photographed is presented below in Table 1.
- 3.3 The locations of the sites are marked on the series of maps (1-10) bound at the rear of this report, and cross-referenced within Table 1.
- 3.4 The photographic survey of the colonies (12) will be repeated following the completion of the flood prevention works in this area.

Table 1: Summary Gazetteer of Sites and Monuments

ID	Fig. no.	Map no.	Class	NGR	NMRS no.	Historical map sources	Description and comments
3	5-6	1	Weir, with mill lead to north	NT 2580 7575		1817, 1853, 1897	Weir is still present.
7	7-9	2	Railway Crossing, Dundee Railway	NT 2527 7537		1853 onwards	Listed, category B. This bridge has three spans. The proposed floodwalls would abut the bridge.
12	10-13	4	Colonies (including 1-8 Glenogle)	NT 2463 7494	NT27SW 1339	1897 onwards	Listed, category B. Built in 1861 by Edinburgh Co-operative Building Co. A mortared stone wall retains the bank on this side of the Water of Leith at this location.
26	14-15	5	Footbridge	NT 2403 7387	NT37SW 3111	1897 onwards	Still present.
31	16-19	5	Road Bridge	NT 2379 7377	NT27SW 639	1853 onwards	Still present. The proposed floodwall would abut this single span stone bridge to the south-west.
46	20-21	7	Bridge	NT 2220 7280			Recent bridges associated with Murrayfield Rugby Stadium.
50	1-4	6	Coltbridge Mill	NT 2300 7336		1853, not 1897	Demolished. Beneath recent housing. The earliest mention of this mill is in 1729 (Priestley 1996).
54	22-23	2	Modern bridge	NT 2545 7555			St Mark's Bridge. Recent. Still present.
57	24-25	5	Weir	NT 2392 7394			Still present.
58	26-27	4	Footbridge	NT 2477 7502			Still present.
62	28-30	7	Bridges	NT 2242 7310			Recent bridges associated with Murrayfield Stadium.
64	31-32	9	Weir	NT 2215 7180			Still present.
66	33-36	10	Longstone Inn	NT 2140 7099		1853 onwards	Still present. The buildings to the west of the Inn are also on the 1853 map.
67	37-38	6	Bridge ('Old Bridge')	NT 2294 7325		1853 onwards	Listed, category B. This bridge is labelled 'Old Bridge' on the 1853 map. Later 18th century.
68	39-41	6	Bridge ('New Bridge')	NT 2291 7324		1853 onwards	Still present. This bridge is labelled 'New Bridge' on the 1853 map

APPENDIX 1: Digital Photograph Register

Coltbridge Mill Lade

Photo No.	Description	Taken from
1	Water of Leith opposite Mill Lade	NE
2	Water of Leith opposite Mill Lade showing stone walled bank of Water of Leith	E
3	View down Water of Leith towards location of Mill opposite Mill Lade	SE
4	View down Water of Leith towards location of Mill opposite Mill Lade	SE
5	View of Coltbridge Mill remains above Water of Leith	SE
6	Detail of Coltbridge Mill remains above Water of Leith	SE
7	View of Coltbridge Mill remains above Water of Leith	SE
8	Mill Lade adjacent to Edinburgh Sports Club	SW
9	Mill Lade adjacent to Edinburgh Sports Club	SW
10	Mill Lade detail	NE
11	Mill Lade detail	SW
12	Mill Lade detail	SW
13	Mill Lade detail	SW
14	Mill Lade detail	NE
15	Mill Lade detail	W
16	Mill Lade detail	N
17	Mill Lade detail	NE
18	Mill Lade detail	SW
19	Mill Lade detail	NE
20	Mill Lade detail	NE
21	Mill Lade detail	SW

Site 3 (Bonnyhaugh Weir)

Photo No.	Description	Taken from
1	Weir viewed from Bonnyhaugh	N
2	View up Water of Leith to weir	NW
3	View up Water of Leith to weir	NW
4	View up Water of Leith to weir	NW
5	View up Water of Leith to weir	NW
6	View of front of weir	NW
7	Detail of front of weir	W
8	Detail of front of weir	W

Site 7 (Dundee Railway Crossing)

Photo No.	Description	Taken from
1	View across top of bridge from Warriston	NW
2	View across top of bridge from Warriston	N
3	Top of bridge with Water of Leith and Warriston road in background	SW
4	Top of bridge with Water of Leith and Warriston road in background	NE
5	Top of Bridge with Eildon Street in background	SE
6	View across top of Bridge with Eildon Street in background	S
7	View up Water of Leith to bridge with Warriston works on the left	NE
8	View up Water of Leith to bridge	NE
9	View up Water of Leith to bridge	NE
10	View up Water of Leith to bridge	NE
11	View up Water of Leith to bridge	E
12	View up Water of Leith to bridge	E
13	View up Water of Leith to bridge	NE

14	View of bridge from Warriston Road	NE
15	Detail of bridge arches	E
16	Detail of bridge arches	SW
17	Detail of bridge arches	S
18	View of bridge and Warriston Road	SW
19	View down Water of Leith to bridge	SW
20	View of bridge and Warriston Road	SW

Site 12 (Stockbridge Colonies)

Photo No.	Description	Taken from
1	Colonies from Bell Place across Water of Leith	NE
2	Looking up Water of Leith with Bell and Kemp Place on left	E
3	Looking up Water of Leith with Colonies on left	E
4	Looking up Water of Leith with Bell and Kemp Place on left	E
5	View of Colonies and footbridge (Site 58) across Water of Leith	N
6	Colonies across Water of Leith	NE
7	Colonies across Water of Leith	NW
8	Colonies across Water of Leith	NE
9	Colonies across Water of Leith	NW
10	Colonies across Water of Leith	N
11	Colonies across Water of Leith	N
12	View across Water of Leith to Colville Place and Glenogle Baths	N
13	Colonies across Water of Leith	N
14	Hugh Miller Place and Reid Terrace across Water of Leith	NE
15	View down Water of Leith with Hugh Miller Place on right	W
16	View across Water of Leith to Reid Terrace	NW
17	View down Water of Leith to Reid Terrace	N
18	View across Water of Leith to Reid Terrace	NW
19	View across Water of Leith to Reid Terrace	SW
20	View across Water of Leith to Reid Terrace	W
21	View across Water of Leith to Reid Terrace	NW
22	View across Water of Leith to Reid Terrace	NW
23	View across Water of Leith to Reid Terrace	SW
24	View across Water of Leith to Reid Terrace and Bridge Place	NW
25	View across Water of Leith to Reid Terrace and Bridge Place	S
26	View down Water of Leith with Bridge Place on right	SE
27	View down Water of Leith to Reid Terrace	W
28	View down Water of Leith to Reid Terrace	W
29	View of Stockbridge colonies along Glenogle Road	E
30	View of Stockbridge colonies along Glenogle Road	E
31	View of Stockbridge colonies along Glenogle Road	W
32	View down Water of Leith from Reid Terrace	SE
33	View down Water of Leith to Reid Terrace	W
34	View down Water of Leith opposite colonies	W
35	View up Water of Leith to Reid Terrace	E
36	View down Water of Leith to Hugh Miller Place	W
37	View up Water of Leith with Reid Terrace on left	N
38	View down Water of Leith with Reid Terrace on right	SW
39	View down Water of Leith with Bridge Place on right	SE
40	View across Water of Leith to Bridge Place and Reid Terrace	SW
41	View across Water of Leith to Reid Terrace	SW
42	View across Water of Leith to Reid Terrace	SW
43	View across Water of Leith to Reid Terrace	SW

Site 26 (Dean Village Footbridge)

Photo No.	Description	Taken from
1	View up Water of Leith towards bridge	E
2	View of bridge from Hawthornbank Lane	SE
3	View of bridge from Hawthornbank Lane	S
4	View down Water of Leith from bridge	W
5	View of bridge from Hawthornbank Lane	S
6	View across bridge towards Hawthornbank Lane	N
7	View of bridge from Damside	NE
8	View of bridge looking down Water of Leith	W
9	View of bridge looking down Water of Leith	W
10	View of bridge looking down Water of Leith	W
11	View of bridge looking down Water of Leith	W

Site 31 (Belford Bridge)

Photo No.	Description	Taken from
1	Looking down Water of Leith towards Belford Bridge	S
2	Looking down Water of Leith towards Belford Bridge	S
3	Looking down Water of Leith towards Belford Bridge	S
4	Looking down Water of Leith towards Belford Bridge	S
5	Looking down Water of Leith towards Belford Bridge	S
6	Looking down Water of Leith towards Belford Bridge	S
7	Looking down Water of Leith towards Belford Bridge	S
8	Looking down Water of Leith towards Belford Bridge	S
9	Looking down Water of Leith towards Belford Bridge	SW
10	Looking down Water of Leith towards Belford Bridge	SW
11	Looking down Water of Leith towards Belford Bridge	SW
12	Belford Bridge from Water of Leith	NW
13	Belford Bridge from Water of Leith	NW
14	Belford Bridge from Water of Leith	NW
15	Looking up Water of Leith to Belford Bridge	N
16	View down Water of Leith from top of Belford Bridge	S
17	View up Water of Leith from top of Belford Bridge	N
18	Belford Bridge from Water of Leith	N
19	Looking up Water of Leith to Belford Bridge	N
20	Looking up Water of Leith to Belford Bridge	N
21	Looking up Water of Leith to Belford Bridge	N
22	Belford Bridge from Water of Leith	NW
23	Detail under bridge arch looking up Water of Leith	NW
24	Looking down Water of Leith towards Belford Bridge	S
25	Looking down Water of Leith towards Belford Bridge	S
26	Looking down Water of Leith towards Belford Bridge	S

Site 46 (Saughtonhall Bridges)

Photo No.	Description	Taken from
1	Looking up Water of Leith to metal bridge	NE
2	Looking up Water of Leith to metal bridge	NE
3	Looking across metal bridge	E
4	View across both bridges	E
5	Detail of north side of stone bridge	NW
6	View across stone bridge	W
7	View of south side of stone bridge	SW
8	View of south side of stone bridge	SW

9	Looking up Water of Leith from stone bridge	N
10	Looking up Water of Leith from stone bridge	N
11	View across stone bridge	E

Site 54 (St Mary's Bridge)

Photo No.	Description	Taken from
1	St Mary's Bridge and Water of Leith	SW
2	St Mary's Bridge and Water of Leith	SW
3	View up Water of Leith towards St Mary's Bridge	E
4	St Mary's Bridge and Water of Leith	NE
5	St Mary's Bridge and Water of Leith	NE
6	St Mary's Bridge and Water of Leith	S

Site 57 (Dean Village Weir)

Photo No.	Description	Taken from
1	Looking down Water of Leith to top of weir	N
2	Looking down Water of Leith to top of weir	N
3	Top of weir	E
4	Front of weir	SE
5	Front of weir	SE

Site 58 (Bell Place Footbridge)

Photo No.	Description	Taken from
1	View of footbridge and Glenogle Terrace colonies	NW
2	View of footbridge and Bell Place colonies	NE
3	View down Water of Leith to footbridge	W
4	Detail of bridge	W
5	Detail of bridge	NW
6	Detail of bridge	W
7	Detail of bridge	W

Site 62 (Murrayfield Bridges)

Photo No.	Description	Taken from
1	View of stone bridge	S
2	View of stone bridge	SW
3	View across stone bridge to Murrayfield	N
4	View of stone bridge from metal bridge	SW
5	View of stone bridge from metal bridge	SW
6	Detail of stone bridge	E
7	Detail of stone bridge looking towards metal bridge	NE
8	Detail of stone bridge looking towards metal bridge	NE
9	View of metal bridge from stone bridge	NE
10	View of metal bridge from stone bridge looking up Water of Leith	NE
11	View of metal bridge from stone bridge looking up Water of Leith	NE
12	View of metal bridge from stone bridge looking up Water of Leith	NE
13	View of metal bridge	SW
14	View of metal bridge	SW
15	Looking down Water of Leith towards metal bridge	SW
16	Looking down Water of Leith towards metal bridge	SW

Site 64 (Ford's Road Weir)

Photo No.	Description	Taken from
1	View down Water of Leith to the top of the weir	SW
2	View down Water of Leith to the top of the weir	W
3	Bottom of weir from Gorgie Road	S
4	Bottom of weir from Saughton Public Park	N
5	Front of weir from Saughton Public Park	NE
6	Front of weir from Saughton Public Park	N
7	Bottom of weir and cobbles from Saughton Public Park	N
8	Front of weir from Saughton Public Park	NE

Site 66 (Longstone Inn)

Photo No.	Description	Taken from
1	View of Longstone Inn and Water of Leith from Longstone Road	E
2	View of Longstone Inn and Water of Leith from Longstone Road	E
3	View of Longstone Inn from Longstone Road	E
4	Back of Longstone Inn	NW
5	Back of Longstone Inn above Water of Leith	N
6	Back of Longstone Inn above Water of Leith	N
7	Back of Longstone Inn above Water of Leith	N
8	Back of Longstone Inn above Water of Leith	N
9	View of Longstone Inn and Water of Leith from Longstone Road	E
10	Longstone Inn and mining village buildings on Longstone Road	SE
11	Longstone Inn and mining village buildings on Longstone Road	SW
12	Back of Longstone Inn and mining village and Footbridge (Site 73)	NE
13	Detail of back of mining village buildings	NE
14	Back of Longstone in and mining village buildings	NW
15	Detail of back of mining village buildings	NE
16	Bridge (Site 73) at back of Longstone Inn	S

Site 67 (Roseburn Bridge 'Old Bridge')

Photo No.	Description	Taken from
1	View across bridge from Roseburn Cliff	SE
2	View from bridge looking to the new bridge (Site 68)	E
3	View across bridge from Coltbridge Avenue	NW
4	Detail of bridge	S
5	Looking up Water of Leith towards bridge (obscured by trees)	NE

Site 68 (Roseburn Bridge 'New Bridge')

Photo No.	Description	Taken from
1	View across bridge	NW
2	View across bridge	W
3	View across bridge	SE
4	Detail of west side of bridge (obscured by trees)	S
5	Looking down Water of Leith to bridge (obscured by trees)	W
6	Detail of west side of bridge (obscured by trees)	S
7	Detail of west side of bridge (obscured by trees)	S
8	Looking up Water of Leith from top of bridge	E
9	Looking across bridge	S
10	Looking across bridge	SW
11	Looking across bridge	N
12	Looking across bridge	NE

13	Looking across bridge	E
14	View across bridge on north side	NE
15	Detail of plaque on north side of bridge	SW
16	View of North side of bridge from the old bridge (Site 67)	NE
17	View of North side of bridge from the old bridge (Site 67)	E
18	View of North side of bridge from the old bridge (Site 67)	E



Plate 1 - Mill Lade adjacent to Edinburgh Sports Club



Plate 2 - Mill Lade detail



Plate 3 - Mill Lade detail



Plate 4 - Mill Lade detail


Key:	Fig. No:	Revision:	Client:	 <div>CFA ARCHAEOLOGY LTD The Old Engine House Eskmills Park Musselburgh East Lothian, EH21 7PQ t: 0131 273 4380 f: 0131 273 4381 e: info@cfa-archaeology.co.uk w: www.cfa-archaeology.co.uk</div>				
	Title:		Plates 1-4					
	Project:		Water of Leith Flood Prevention Scheme Photographic Survey					
Scale:				Drawn by:	Page No:	Report No:	1640	



Plate 5 - Site 3: View up Water of Leith to weir



Plate 6 - Site 3: View of front of weir



Plate 7 - Site 7: View across top of Bridge with Eildon Street in background



Plate 8 - Site 7: View up Water of Leith to bridge



Plate 9 - Site 7: View down Water of Leith to bridge


Key:	Fig. No:	Revision:	Client:	 <div>CFA ARCHAEOLOGY LTD The Old Engine House Eskmills Park Musselburgh East Lothian, EH21 7PQ t: 0131 273 4380 f: 0131 273 4381 e: info@cfa-archaeology.co.uk w: www.cfa-archaeology.co.uk</div>				
	Title:		The City of Edinburgh Council					
	Plates 7-9							
	Project:		Water of Leith Flood Prevention Scheme Photographic Survey			Drawn by:	Page No:	Report No: 1640
Scale:								



Plate 10 - Site 12: Colonies from Bell Place across Water of Leith



Plate 11 - Site 12: Hugh Miller Place and Reid Terrace across Water of Leith



Plate 12 - Site 12: View down Water of Leith with Bridge Place on right



Plate 13 - Site 12: View across Water of Leith to Reid Terrace

Key:

Fig. No:

Revision:

Client:

The City of Edinburgh Council

Title:

Plates 10-13

Project:

Water of Leith Flood Prevention Scheme
Photographic Survey

Scale:



CFA ARCHAEOLOGY LTD
The Old Engine House
Eskmills Park
Musselburgh
East Lothian, EH21 7PQ

t: 0131 273 4380
f: 0131 273 4381
e: info@cfa-archaeology.co.uk
w: www.cfa-archaeology.co.uk

Drawn by:

Page No:

Report No:

1640



Plate 14 - Site 26: View across bridge towards Hawthornbank Lane



Plate 15 - Site 26: View of bridge looking down Water of Leith

Key:	Fig. No:	Revision:	Client:
	The City of Edinburgh Council		
	Title: Plates 14-15		
Scale:	Project:		
	Water of Leith Flood Prevention Scheme Photographic Survey		



CFA ARCHAEOLOGY LTD
The Old Engine House
Eskmills Park
Musselburgh
East Lothian, EH21 7PQ

t: 0131 273 4380
f: 0131 273 4381
e: info@cfa-archaeology.co.uk
w: www.cfa-archaeology.co.uk

Drawn by:	Page No:	Report No:
		1640



Plate 16 - Site 31: Looking down Water of Leith towards Belford Bridge



Plate 17 - Site 31: Belford Bridge from Water of Leith



Plate 18 - Site 31: Detail under bridge arch looking up Water of Leith



Plate 19 - Site 31: Looking down Water of Leith towards Belford Bridge


Key:	Fig. No:	Revision:	Client:	 <div>CFA ARCHAEOLOGY LTD The Old Engine House Eskmills Park Musselburgh East Lothian, EH21 7PQ t: 0131 273 4380 f: 0131 273 4381 e: info@cfa-archaeology.co.uk w: www.cfa-archaeology.co.uk</div>		
	Title:					
	Plates 16-19					
	Project:					
	Water of Leith Flood Prevention Scheme					
Scale:	Photographic Survey			Drawn by:	Page No:	Report No:
						1640



Plate 20 - Site 46: View across both bridges



Plate 21 - Site 46: View of south side of stone bridge



Plate 22 - Site 54: St Mary's Bridge and Water of Leith



Plate 23 - Site 54: St Mary's Bridge and Water of Leith


Key:	Fig. No:	Revision:	Client:	The City of Edinburgh Council		 <div>CFA ARCHAEOLOGY LTD The Old Engine House Eskmills Park Musselburgh East Lothian, EH21 7PQ t: 0131 273 4380 f: 0131 273 4381 e: info@cfa-archaeology.co.uk w: www.cfa-archaeology.co.uk</div>			
	Title: Plates 22-23								
	Project: Water of Leith Flood Prevention Scheme Photographic Survey								
Scale:						Drawn by:	Page No:	Report No:	1640



Plate 24 - Site 57: Looking down Water of Leith to top of weir



Plate 25 - Site 57: Front of weir

Key:

Fig. No:	Revision:	Client:
The City of Edinburgh Council		
Title:		
Plates 24-25		
Project:		
Water of Leith Flood Prevention Scheme Photographic Survey		

Scale:



CFA ARCHAEOLOGY LTD
The Old Engine House
Eskmills Park
Musselburgh
East Lothian, EH21 7PQ
t: 0131 273 4380
f: 0131 273 4381
e: info@cfa-archaeology.co.uk
w: www.cfa-archaeology.co.uk

Drawn by:	Page No:	Report No:
		1640



Plate 26 - Site 58: View down Water of Leith to footbridge



Plate 27 - Site 58: Detail of bridge




Plate 28 - Site 62: View across stone bridge to Murrayfield



Plate 29 - Site 62: Detail of stone bridge looking towards metal bridge



Plate 30 - Site 62: View of metal bridge

Key:	Fig. No:	Revision:	Client:	 <div>CFA ARCHAEOLOGY LTD The Old Engine House Eskmills Park Musselburgh East Lothian, EH21 7PQ t: 0131 273 4380 f: 0131 273 4381 e: info@cfa-archaeology.co.uk w: www.cfa-archaeology.co.uk</div>		
	Title:					
	Plates 28-30					
	Project:					
	Water of Leith Flood Prevention Scheme Photographic Survey					
Scale:				Drawn by:	Page No:	Report No: 1640

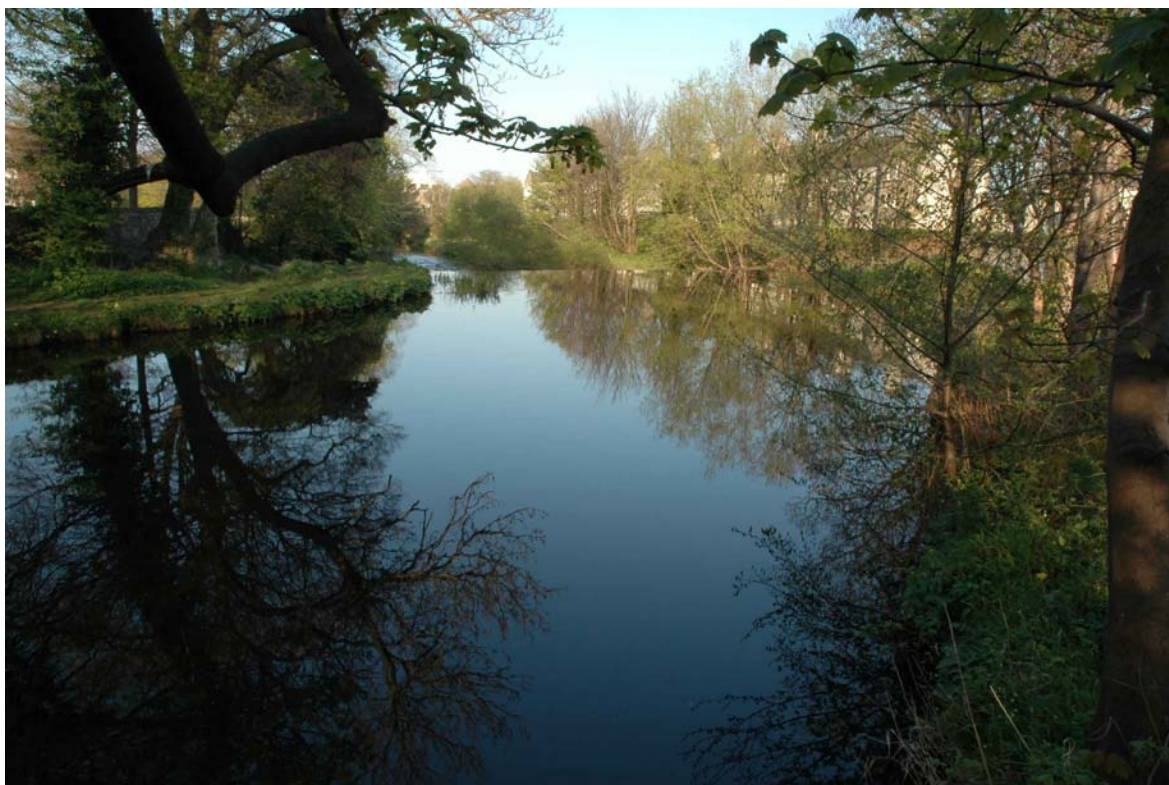


Plate 31 - Site 64: View down Water of Leith to the top of the weir



Plate 32 - Site 64: Front of weir from Saughton Public Park

Key:

Fig. No:

Revision:

Client:

The City of Edinburgh Council

Title:

Plates 31-32

Project:

Water of Leith Flood Prevention Scheme
Photographic Survey

Scale:



CFA ARCHAEOLOGY LTD
The Old Engine House
Eskmills Park
Musselburgh
East Lothian, EH21 7PQ

t: 0131 273 4380
f: 0131 273 4381
e: info@cfa-archaeology.co.uk
w: www.cfa-archaeology.co.uk

Drawn by:

Page No:

Report No:

1640



Plate 33 - Site 66: View of Longstone Inn and Water of Leith from Longstone Road



Plate 34 - Site 66: Back of Longstone Inn above Water of Leith



Plate 35 - Site 66: Longstone Inn and mining village buildings on Longstone Road



Plate 36 - Site 66: Back of Longstone Inn and mining village buildings

Key:

Fig. No:

Revision:

Client:

The City of Edinburgh Council

Title:

Plates 33-36

Project:

Water of Leith Flood Prevention Scheme
Photographic Survey

Scale:



CFA ARCHAEOLOGY LTD
The Old Engine House
Eskmills Park
Musselburgh
East Lothian, EH21 7PQ

t: 0131 273 4380
f: 0131 273 4381
e: info@cfa-archaeology.co.uk
w: www.cfa-archaeology.co.uk

Drawn by:

Page No:

Report No:

1640



Plate 37 - Site 67: View across bridge from Roseburn Cliff

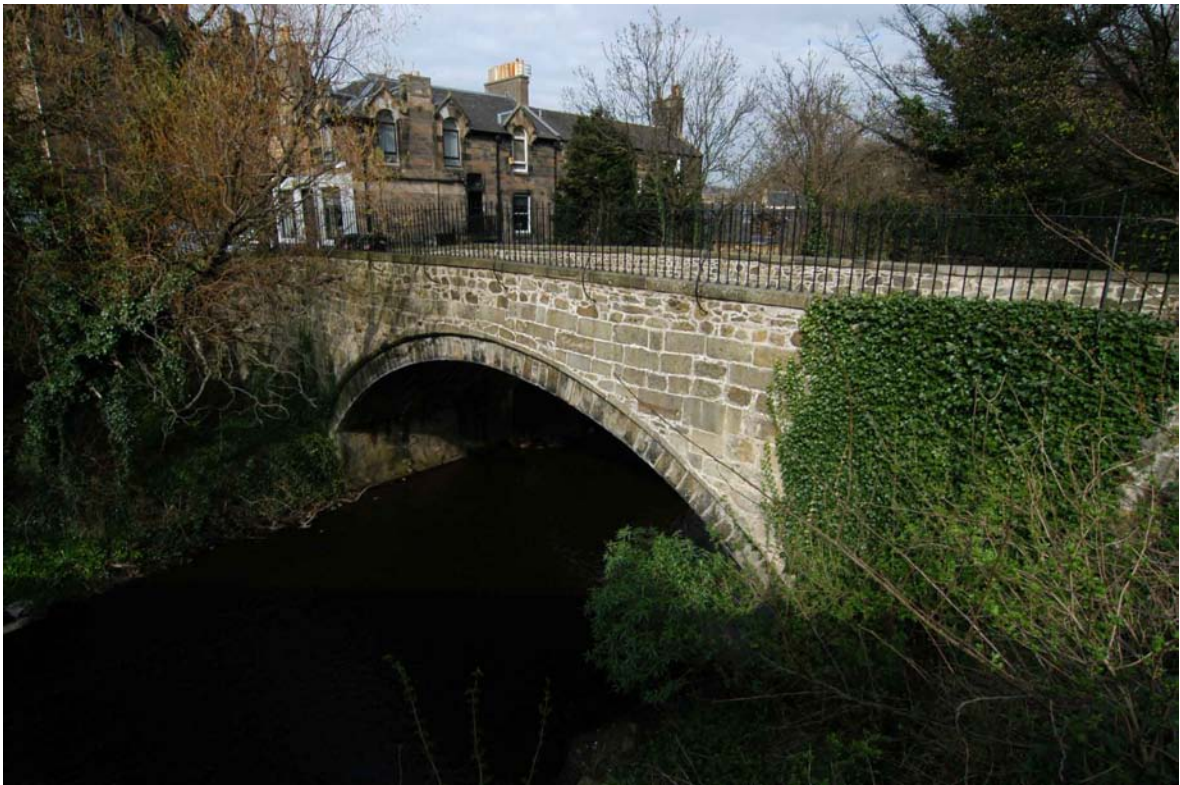


Plate 38 - Site 67: Detail of bridge



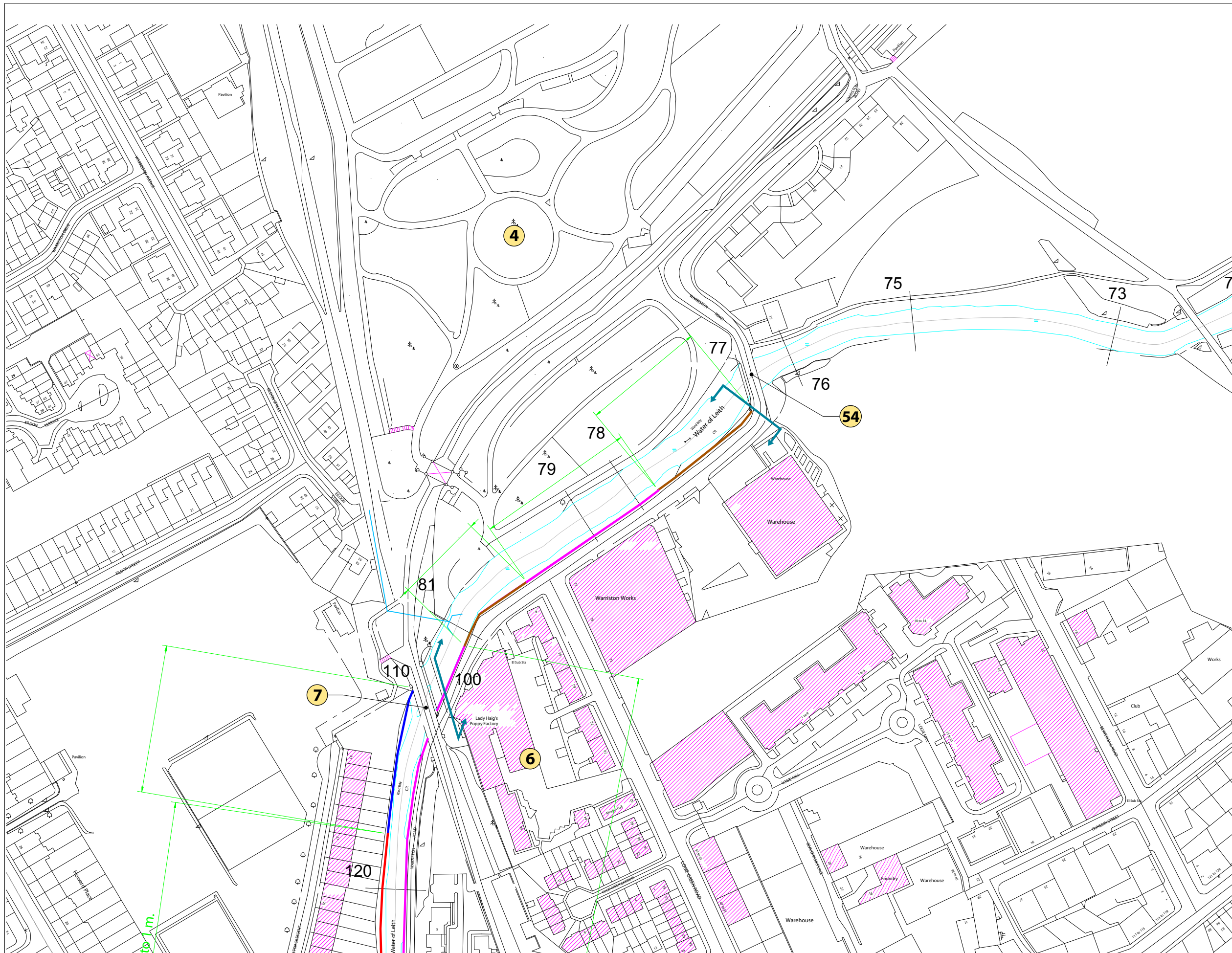
Plate 39 - Site 68: View across bridge on north side



Plate 40 - Site 68: Detail of plaque on north side of bridge



Plate 41 - Site 68: View of North side of bridge from the old bridge (Site 67)



Drawing Number

BWA 201534/GP2

Notes

KEY

FLOODWALL, height :

up to 1 m.

1 to 1.5 m.

1.5 to 2.0 m.

above 2.0 m.

EMBANKMENT, height :

up to 1 m.

1 to 1.5 m.

1.5 to 2.0 m.

Surface Water Outfall

Finished Crest Level
for 200 yr. flood
without u/s. storage
(incl. 300mm freeboard)

Sites & Monuments

No monitoring

Do not scale this drawing

--	--	--	--



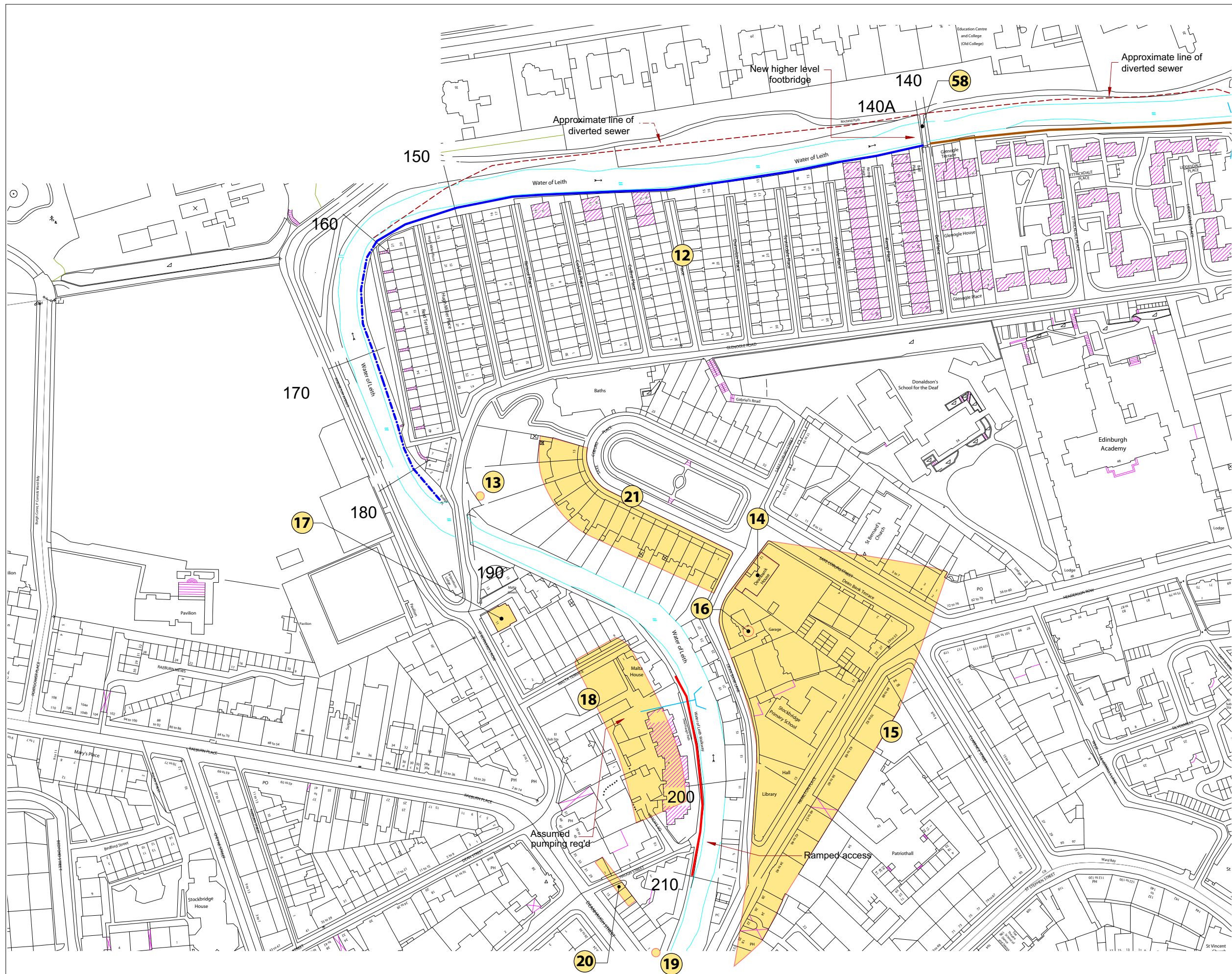
Client	EDINBURGH CITY COUNCIL
--------	------------------------

Project	WATER OF LEITH FLOOD STUDY
---------	----------------------------

Title	INDICATIVE EXTENT OF POSSIBLE FLOOD ALLEVIATION MEASURES SHEET 2 OF 10
-------	--

Drawing No.	BWA 201534/GP2							
Scale	1:1000 (A1) 1:2000 (A3)		Date MAR '01					
	Drawn	DL	Checked	Approved				

Copyright reserved
Babbie Group Ltd 95 Bothwell Street, Glasgow G2 7HX



Drawing Number

BWA 201534/GP4

Notes

KEY

FLOODWALL, height :

up to 1 m.

1 to 1.5 m.

1.5 to 2.0 m.

above 2.0 m.

EMBANKMENT, height :

up to 1 m.

1 to 1.5 m.

1.5 to 2.0 m.

Surface Water Outfall

Finished Crest Level
for 200 yr. flood
without u/s. storage
(incl. 300mm freeboard)

Sites & Monuments

No monitoring

Do not scale this drawing

DO NOT WRITE INTO GRADING	
1	
2	
3	
4	
5	
6	
7	
8	
9	
10	
11	
12	
13	
14	
15	
16	
17	
18	
19	
20	
21	
22	
23	
24	
25	
26	
27	
28	
29	
30	
31	
32	
33	
34	
35	
36	
37	
38	
39	
40	
41	
42	
43	
44	
45	
46	
47	
48	
49	
50	
51	
52	
53	
54	
55	
56	
57	
58	
59	
60	
61	
62	
63	
64	
65	
66	
67	
68	
69	
70	
71	
72	
73	
74	
75	
76	
77	
78	
79	
80	
81	
82	
83	
84	
85	
86	
87	
88	
89	
90	
91	
92	
93	
94	
95	
96	
97	
98	
99	
100	



Client	EDINBURGH CITY COUNCIL
--------	------------------------

Project	WATER OF LEITH FLOOD STUDY
---------	----------------------------

Title	INDICATIVE EXTENT OF POSSIBLE FLOOD ALLEVIATION MEASURES SHEET 4 OF 10
-------	--

Drawing No.	BWA 201534/GP4
-------------	----------------

Scale	1:1000 (A1) 1:2000 (A3)
-------	-------------------------

	Drawn	DL
--	-------	----

Copyright reserved
Babtie Group Ltd 95 Bothwell Street, Glasgow G2 7HX

