

CFA Archaeology Ltd

archaeological consultants

Advice on Archaeology & Planning

Environmental Impact Assessment

Field Evaluation & Excavation

Finds / Environmental Analysis

Geophysical Survey

Historic Building Recording

Site & Landscape Survey

Interpretation, Design & Display

Lingo Wind Farm, Fife: Cultural Heritage Assessment

CFA ARCHAEOLOGY LTD

The Old Engine House
Eskmills Business Park
Musselburgh
East Lothian
EH21 7PQ

Tel: 0131 273 4380

Fax: 0131 273 4381

email: info@cfa-archaeology.co.uk

web: www.cfa-archaeology.co.uk

Author	George Mudie MA FSA Scot MifA
Illustrator	
Editor	
Commissioned by	West Coast Energy Ltd
Date issued	September 2012
Version	
OASIS Reference	
Planning Application No.	
Grid Ref	NO 505 094

This document has been prepared in accordance with CFA Archaeology Ltd
standard operating procedures.

Lingo Wind Farm, Fife

Cultural Heritage Assessment

CHAPTER SEVEN: ARCHAEOLOGICAL ASSESSMENT

7.1 EXECUTIVE SUMMARY

- 7.1.1 This chapter considers the likely impacts on archaeology and built heritage interests of the construction and operation of the proposed development. The assessment has been undertaken by CFA Archaeology Ltd (CFA), taking into account comments and information provided by Historic Scotland and the Fife Council Archaeologist.
- 7.1.2 The assessment was designed to identify and assess the value of any archaeological sites present within the proposed development area through examination of desk-based sources and detailed field reconnaissance and to identify any key receptors within 10 km of the proposed development that could have their settings affected.
- 7.1.3 Fifteen sites and features of cultural heritage interest have been identified within the proposed development area (Figure 36). The majority of these are associated with medieval or later settlement and agrarian activity; none are of international, national or regional importance. A possible moated homestead (15) is considered to be potentially of regional importance and medium sensitivity; whilst, the ruins of South Kinaldy Farm (4) are considered to be of local importance and low sensitivity. There is no surviving surface trace of three sites (Mid Kinaldie settlement (12), Kinaldy Mill and lade (13), and a parish boundary (14)) and these sites are presently of unknown sensitivity; although, if buried remains survive then they would be considered to be of local importance and of low sensitivity. All of the other sites identified within the proposed development boundary are of lesser importance and of negligible sensitivity.
- 7.1.4 The potential for as yet undetected buried archaeological remains to survive within the proposed development area is considered to be high, especially in those areas where previously recorded sites were once present (12 and 14). However, taking into account the limited extent of the ground disturbance generated by elements of the proposed development the probability of encountering hitherto undiscovered sites of archaeological importance is considered to be moderate/low.
- 7.1.5 The proposed development has been designed to avoid all significant archaeological remains. No direct impacts of major significance are predicted on any of the identified sites; however, three features (a track (2.2), a section of dry-stone field wall (11.1), and a parish boundary (14)) would receive direct impacts of negligible significance. One site (Mid Kinaldie settlement (12)) has no surface remains; however, buried features may still survive and could potentially be disturbed by ground breaking works for the proposed development. The precise location (or the extent) of the site is presently unknown and any direct impact on this site, from construction works, would be of an unknown significance. Mitigation measures are presented to address the possibility of direct impacts on these historic environment features.
- 7.1.6 An indirect impact of moderate significance is predicted on the setting of Pittarthie Castle, a Scheduled Monument (870), which is also Category B Listed (4317). An indirect impact of moderate significance is predicted on the setting of Category B listed Kinaldy House (2699).

7.1.7 The impact of the proposed development in combination with other developments in the vicinity is considered to be no greater than that arising from the Lingo scheme alone and the cumulative impact would be not significant.

7.2 INTRODUCTION

7.2.1 This chapter of the Environmental Statement (ES) evaluates the impacts of the proposed development on cultural heritage interests. The assessment was undertaken by CFA Archaeology Ltd (CFA), taking into account comments and information provided by Historic Scotland and the Fife Council Archaeologist.

7.2.2 The assessment was conducted in accordance with the Institute for Archaeologist Code of Conduct (IfA 2010), and Standard and Guidance for Archaeological Desk-based Assessment (IfA 2009).

7.2.3 The assessment evaluates the impacts of the proposed development on Scheduled Monuments and other archaeological features, Listed Buildings and other buildings of historic or architectural importance, Conservation Areas, and Gardens and Designed Landscapes.

7.2.4 Figure 36 depicts the proposed development area and the locations of cultural heritage sites and features identified by the assessment within the proposed development area. Appendix 7.1 provides a gazetteer of these sites and features and an indication of the relative sensitivity of each.

7.2.5 Figure 37 shows the development in its wider landscape setting with the zones of theoretical visibility (ZTV) and the locations of key cultural heritage receptors within 10 km of the development (centred on the turbines) that have theoretical views of the turbines, based on the ZTV, and Appendices 7.2 and 7.3 provides a summary of the predicted indirect impacts, on a site by site basis.

Government and Local Planning Policies

7.2.6 The assessment was conducted with reference to the relevant statutory and planning framework for cultural heritage. Legislation includes the Ancient Monuments and Archaeological Areas Act 1979, the Planning (Listed Buildings and Conservation Areas) (Scotland) Act 1997 and the Town and Country Planning (Development Management Procedure) (Scotland) Regulations 2008. The primary planning guidance comprises the Scottish Historic Environment Policy document (SHEP), Scottish Planning Policy (SPP) (February 2010) and PAN 2/2011 at national level, and at the regional and local level the Fife Structure Plan 2006-2025, St Andrews Local Plan 1996, Largo and East Neuk Local Plan 1995, and St Andrews and East Fife Local Plan 2009. The assessment was conducted with reference to the relevant statutory and planning framework for cultural heritage.

National Legislation Policy

7.2.7 Scotland's historic environment contributes to the Scottish Government's strategic objectives and to the target of improving the state of Scotland's historic buildings, monuments and environment, and is identified as a national indicator and target under the National Performance Framework. The Scottish Historic Environment Policy (SHEP) sets out Scottish Minister's policies for the historic environment, and provides policy direction for Historic Scotland and a framework that informs the day-to-day work of a range of organisations that have a role and interest in managing Scotland's historic environment. Through the implementation of the SHEP, Scottish Ministers wish to achieve three outcomes for Scotland's historic environment.

- That the historic environment is cared for, protected and enhanced for the benefit of our own future generations.
- To secure greater economic benefits from the historic environment.
- That the people of Scotland and visitors to our country value, understand and enjoy the historic environment.

7.2.8 Cultural heritage resources include sites with statutory and non-statutory designations as defined in SPP.

Sites with statutory designations include:

- Scheduled Monuments.
- Listed Buildings.
- Conservation Areas.
- Designated Wrecks

Sites with non-statutory designations include:

- World Heritage Sites.
- Gardens and Designed Landscapes.
- Historic Battlefields.
- Other Historic Environment Interests.

7.2.9 Those relevant to this assessment are Scheduled Monuments and other archaeological features, Listed Buildings and other buildings of historic or architectural importance, Conservation Areas, and Gardens and Designed Landscapes.

7.2.10 PAN 2/2011 advises that, in determining planning applications, planning authorities should take into account the relative importance of archaeological sites (para 5). It also notes that in determining planning applications that may impact on archaeological features or their setting, planning authorities may on occasion have to balance the benefits of development against the importance of archaeological features (para 6). The desirability of preserving a monument (whether scheduled or not) is a material consideration and the objective should be to assure the protection and enhancement of monuments by preservation in situ, in an appropriate setting. When preservation in situ is not possible, recording and/or excavation followed by analysis and publication of the results may be an acceptable alternative (para 14).

Sites with Statutory Designations

Scheduled Monuments

- 7.2.11 Under the Ancient Monuments and Archaeological Areas Act 1979 (1979 Act), the Scottish Ministers are required to compile and maintain a schedule of monuments considered to be of importance. The consent of the Scottish Ministers is required before any works are carried out which would have the effect of demolishing, destroying, damaging, removing, repairing, altering, adding to, flooding or covering up a Scheduled Monument. In addition, effects of proposed development works upon the setting of a Scheduled Monument form an important consideration in the granting or refusal of planning consent to conduct development works.

Listed Buildings

- 7.2.12 Under the Planning (Listed Buildings and Conservation Areas) (Scotland) Act 1997 (1997 Act), the Scottish Ministers are required to compile a list of buildings of special architectural or historic interest. Such buildings are classified into Categories A, B and C(s), in decreasing order of importance. Planning authorities and the Scottish Ministers are required to have special regard for the desirability of preserving Listed Buildings and their settings and any features of special architectural or historic importance they possess.

Conservation Areas

- 7.2.13 Under the Planning (Listed Buildings and Conservation Areas) Scotland Act (1997 Act), areas of special architectural or historic interest can be designated by local authorities as Conservation Areas, the character or appearance of which it is desirable to preserve or enhance. Planning authorities are required to consider planning applications affecting the appearance, character or setting of Conservation Areas.

Sites with Non-Statutory Designations

Gardens and Designed Landscapes

- 7.2.14 The impact of a development on a designated Garden or Designed Landscape listed in 'An Inventory of Gardens and Designed Landscapes in Scotland or its Supplements' (Inventory; published by Historic Scotland) is a material consideration in the determination of a planning application, although the designation is non-statutory in effect. Under the provisions of the Town and Country Planning (General Development Management Procedure) (Scotland) Order Regulations 2008 (1998 Regulations), planning authorities must consult Historic Scotland on any development that may affect a site contained in the Inventory.

Other Historic Environment Interests

- 7.2.15 There is a range of other non-designated archaeological sites, monuments and areas of historic interest, including battlefields, historic landscapes, other gardens and designed landscapes, woodlands and routes such as

drove roads that do not have statutory protection. Sites without statutory protection are curated by the local planning authority.

Regional and Local Planning Policy Guidance

- 7.2.16 The proposed development site lies within the area covered by the Fife Structure Plan and is partly within the St Andrews Local Plan area and partly within the Largo and East Neuk Local Plan area.

Fife Structure Plan 2006-2026 (Approved 2009)

- 7.2.17 The Fife Structure Plan 2006-2026 (Approved 2009) establishes the Local Authority's position with regard to sites of archaeological or historical importance.
- 7.2.18 Policy R1 provides criteria against which all future wind farm applications will be considered and sets out the material factors to be considered in the process of preparing and determining planning application for wind turbines and wind farm developments. The criteria states that in all cases applications for wind farms should be assessed in relation to their impacts on the historic environment and how any adverse effects can be minimised.
- 7.2.19 Paragraph 4.11 of the Structure Plan states that it is important to protect the archaeological heritage of Fife, particularly where it is of national and regional importance, from the adverse effects of development. It is directed that Local Plan policies should provide protection for the built and historic environments and for archaeology.

St Andrews Local Plan (Adopted 1996)

- 7.2.20 Policy E5 (Listed Buildings) states that development proposals affecting Listed Buildings and their settings will be required to conform to the highest possible standards of design, including the siting of new buildings, choice of appropriate finishing materials, landscaping and the form of boundary enclosures.
- 7.2.21 Policy E6 (Garden and Designed Landscapes) states that development proposals should not directly affect sites listed in the Inventory of Gardens and Designed Landscapes in Scotland. Where development is considered appropriate, it will be required to conform to the highest standard of design, including the siting of new buildings, choice of appropriate finishing materials, landscaping, and the form of boundary enclosures.
- 7.2.22 Policy E17 (Ancient Monuments and Archaeological Sites) states that development proposals will not be supported if they are likely to have adverse effect on sites of heritage issue.
- 7.2.23 Policy E18 states that account will be taken of any information available to the heritage interest of sites which are the subject of development proposals. In cases where planning permission is granted, the council will, if appropriate, ensure that important features are safeguarded by imposing planning conditions and/ seeking to use Section 50 agreements.

Largo and East Neuk Local Plan (Adopted 1995)

- 7.2.24 Policy EV2 (Conservation Areas) states that the council will exercise all planning powers to conserve and enhance wherever possible the environmental quality of the Local Plan area's Conservation Areas.
- 7.2.25 Policy EV4 (Listed Buildings) states that Development proposals affecting Listed Buildings and their settings will be required to conform to the highest possible standards of design, including the siting of new buildings, choice of appropriate finishing materials, landscaping, and the form of boundary enclosures.
- 7.2.26 Policy EV9 (Ancient Monuments and Archaeological Sites) states there will be a presumption against development proposals which will adversely affect the site and setting of ancient monuments, and sites of archaeological interest.
- 7.2.27 Policy EV10 states that the District Council, in the exercise of its development control powers will take into account any information on the archaeological interest of the site and will seek to ensure that important features are conserved wherever reasonably possible.

St Andrews and East Fife Local Plan (Finalised 2009)

- 7.2.28 Fife Council is preparing a new Local Plan (target adoption date winter 2011 – spring 2012) which has gone through the consultation stage and is now awaiting approval. It is now a material consideration in planning applications.
- 7.2.29 Policy E6 (Conservation Areas) states that the design, materials, scale and siting of any development shall be appropriate to the character of the Conservation Area and its setting.
- 7.2.30 Policy E7 (Listed Buildings) states that development affecting a listed building, or its setting, shall preserve the building, or its setting, or any feature of special architectural or historic interest which it possesses. The layout, design, materials, scale, siting and use of any development shall be appropriate to the character and appearance of the listed building and its setting.
- 7.2.31 Policy E11 (Historic Gardens and Designed Landscapes) states that development affecting Historic Gardens and Designed Landscapes shall protect, preserve and enhance such places and shall not impact adversely upon their character, upon important views to, from or within them, or upon the site or setting of component features which contribute to their value.
- 7.2.32 Policy E12 (Ancient Monuments and Archaeological Sites) states that Scheduled Monuments and other identified nationally important archaeological resources shall be preserved in situ, and with an appropriate setting. Developments that have an adverse effect on

Scheduled Monuments or the integrity of their setting shall not be permitted unless there are exceptional circumstances. All other archaeological resources shall be preserved in situ where feasible. The significance of any impacts on archaeological resources and their settings will be weighed against other merits of the development proposals in the determination of planning applications.

The developer may be requested to supply a report of an archaeological evaluation prior to determination of the planning application. Where the case for preservation does not prevail, the developer shall be required to make appropriate and satisfactory provision for archaeological excavation, recording, analysis and publication, in advance of development.

Where compatible with their preservation, proposals for the enhancement, promotion and interpretation of ancient monuments and archaeological sites will be supported.

- 7.2.33 Policy I1 (Renewable Energy) states that renewable energy developments will be supported provided that there is no significant adverse impact on the local built environment.

7.3 AIMS AND OBJECTIVES

- 7.3.1 The specific objectives of the cultural heritage study were to:

- Identify the cultural heritage baseline through desk-based assessment and walk-over reconnaissance field survey;
- Consider the development in terms of its archaeological and historic environment potential; and,
- Assess the potential and predicted impacts of the development on the baseline cultural heritage resource, within the context of the relevant legislation and planning policy guidelines.

7.4 METHODOLOGY

- 7.4.1 The cultural heritage study area consists of two parts:

- The proposed development area which covers approximately 170 ha for which a full desk-based assessment and field reconnaissance survey was undertaken. The proposed development area consists of improved pasture and arable fields to the northeast of Largoward (Figure 36).
- A wider study area, extending to a 10 km radius centred on the proposed turbines, provided the study area for the identification of sites within statutory protection (and those with national, regional, and non-statutory designations) whose settings (indirect impacts) may be affected by the proposed development (Figure 37).

Consultation

- 7.4.2 A scoping response, raising cultural heritage issues, was received from Historic Scotland. A summary is provided in Table 7.1 below.
- 7.4.3 CFA sent a consultation letter (20 July 2009) to the Fife Council Archaeologist requesting information and inviting comment on the

proposed development. A response, raising cultural heritage issues, was received from the Fife Council Archaeologist (10 August 2009) and a summary is provided in Table 7.1 below.

Table 7.1: Consultation Responses

Consultee	Issues Raised	Response
Historic Scotland Scoping Response (24 April 2009)	Confirmed that there are no Scheduled Monuments, Listed Buildings or Garden and Designed Landscapes within the proposed development area	No further response is required.
	Noted that Scheduled Monument, Pittarhie Castle (870) lies approximately 66 m to the east of the proposed site boundary and asked that the impact of the proposed development on the setting of the castle should be assessed as part of the ES.	The indirect impact on Pittarhie Castle is assessed in Section 7.6.
Fife Council Archaeologist Consultation Response (21 July 2009)	Confirmed that there are no Scheduled Monuments, Listed Buildings, Inventory Garden and Designed Landscapes, Conservation Areas, or Archaeological Sites of Regional Importance within the proposed development area.	No further response is required.
	Identified areas of rig and furrow, field boundaries and enclosures, as well as Lingo Moated site (SMR Ref: NO40NE 1), a site considered to be of regional importance, immediately outwith the proposed development boundary.	The indirect impact on Lingo Moated site is assessed in Section 6.6.
	Advised that examination should be made to all available aerial photographs of the area.	The baseline condition of the proposed development area is discussed in Section 6.4.
	Provided information on sites held in their Sites and Monument Record (SMR) which lie within and directly adjacent to	The baseline condition of the proposed development area is discussed in Section 6.4.

	the application area.	
Fife Council Archaeologist Consultation Response (18 August 2009)	Advised that although there are no known recorded sites within the proposed development area this probably reflects the lack of intensive study and not that the area is devoid of archaeology.	Mitigation strategies are set out in Section 6.6.
	Advised that there are no obvious archaeological implications associated with the development other than the potential for ground disturbance works to impact upon unrecorded archaeological deposits. This area of Fife is rich in archaeology and the Council consider that the possibility of unrecorded archaeological deposits existing within the proposed development area is high.	The baseline condition and the archaeological potential of the proposed development area are discussed in Sections 6.4. Mitigation strategies are set out in Section 6.6.
	Advised that a parish boundary runs north to south through the middle of the site, a boundary which may have been marked out on the ground with a ditch and may date from as early as the 12th century.	The baseline condition and the archaeological potential of the proposed development area are discussed in Section 6.4. Mitigation strategies are set out in Section 6.6.
	Advised that the Council consider that there are no major archaeological impediments to the proposed development, however the Council will expect to see a suitable archaeological mitigation strategy that includes the monitoring of all ground disturbance works.	Mitigation strategies are set out in Section 6.6.

Baseline Characterisation

- 7.4.4 Up-to-date information was obtained from appropriate sources on the locations of cultural heritage sites with statutory protection and non-statutory designations either within or in the vicinity of the proposed development area.

- 7.4.5 Details of the locations and extents of Scheduled Monuments, Listed Buildings, Gardens and Designed Landscapes were downloaded from the Historic Scotland Spatial Data Warehouse (<http://hsewsf.sedsh.gov.uk/gisd.html>). Additional information was provided on known archaeological sites and features within the proposed development area from the Fife Council Sites and Monuments Record (SMR). The data was provided in GIS format.
- 7.4.6 Information on the character and condition of known archaeological sites and features within the proposed development area was obtained from the National Monuments Record of Scotland (NMRS) resource maintained by the Royal Commission on the Ancient and Historic Monuments of Scotland (RCAHMS) and Historic Scotland, and from the SMR records as appropriate.
- 7.4.7 Ordnance Survey maps and other early maps held by the Map Library of the National Library of Scotland were examined, to provide information on sites of potential archaeological significance and historic land-use development.
- 7.4.8 An assessment was made of vertical aerial photograph collections held by the RCAHMS. Sorties dating from 1946 to 1988 were examined.
- 7.4.9 Bibliographic references were consulted to provide background and historical information.
- 7.4.10 The online Historic Land-Use Assessment for Scotland (HLAMap) (<http://www.rcahms.gov.uk>), maintained by the RCAHMS, was consulted for information on the historic land use character of the proposed development area.
- 7.4.11 The Scottish Palaeoenvironmental Database (SPAD) (<http://www.geo.ed.ac.uk/spad>), which records the distribution of known palaeoenvironmental sites across Scotland, was consulted for information on palaeoenvironmental data within or adjacent to the proposed development area.

Field Survey

- 7.4.12 A reconnaissance field survey was undertaken, in August 2009, across the proposed development area (shown as the red line boundary on Figure 2) with the following aims:
- To assess the present baseline condition of the known archaeology and cultural heritage features identified through the desk-based assessment.
 - To identify any further features not detected from the desk-based assessment and to identify areas with the potential to contain currently unrecorded, buried archaeological remains.
- 7.4.13 Site locations were recorded using a Global Positioning System (GPS). The grid references provided are accurate to approximately +/- 10m. No intrusive archaeological interventions have been carried out as part of this assessment.

- 7.4.14 Field visits to key cultural heritage receptors was also carried out, to assess the character and sensitivity of the settings of cultural heritage receptors within 10 km of the proposed development, and to assess the impacts of the proposed development on those settings. Site visits focused on cultural heritage sites most likely to receive significant impacts on their settings (i.e. those closest to the development area and those specifically identified as requiring assessment by Historic Scotland). Many of the listed buildings were not visited directly, as most are private residential properties, with no public access.
- 7.4.15 Factors considered when assessing the sensitivity of the setting of an asset included:
- The topographic location and orientation of the site.
 - The presence of important views of or from principal facades.
 - The importance, if applicable, of any designed settings, and any obvious designed views or vistas.

Impact Assessment Methodology

Assessing Significance

- 7.4.16 The impacts of the proposed development on cultural heritage assets are assessed on the basis of their type (direct, secondary, indirect, cumulative), nature (beneficial, neutral or adverse), and longevity (reversible, short-term or long-term; irreversible, permanent). The assessment takes into account the sensitivity of the receptor and the magnitude of impact. Mitigation measures designed to prevent, reduce or offset significant adverse impacts are proposed, and residual impacts are assessed taking into account the likely effectiveness of the mitigation proposed.
- 7.4.17 The assessment of sensitivity of archaeological and heritage assets has been determined from the relative weight given to them in SPP and SHEP). Table 7.2 summarises the relative sensitivity of key cultural heritage resources.

Table 7.2: Sensitivity of Cultural Heritage Assets

Sensitivity	Definition / Criteria
High	Sites of national and international importance, including: World Heritage Sites. Scheduled Monuments and sites proposed for scheduling. Undesignated archaeological sites and areas of likely national importance identified in HERs / SMRs. Category A Listed Buildings. Gardens and Designed Landscapes (Inventory sites). Outstanding Conservation Areas. Designated Wreck Sites.
Medium	Sites of regional importance, including: Archaeological sites and areas of distinctive regional

	importance. Archaeological Sensitive Areas. Category B Listed Buildings. Conservation Areas. Non-Inventory Designed Landscapes.
Low	Sites of local importance, including: Archaeological sites of local importance. Category C(S) Listed Buildings. Unlisted historic buildings and townscapes with local (vernacular) characteristics.
Negligible	Sites of little no importance, including: Find-spots. Unlisted buildings of minor historic or architectural interest. Poorly preserved examples of particular types of features.

Assessment of Direct Impacts

7.4.18 Criteria for assessing magnitude of a direct impact, which measures the degree of change to the baseline condition of a feature that would result from the construction of one or more element of the proposed development, are presented in Table 7.3.

Table 7.3: Sensitivity of Cultural Heritage Assets

Level of Magnitude	Definition
High	A fundamental change to the baseline condition of the receptor, leading to total or major alteration of character.
Medium	A material, partial alteration of character.
Low	Slight detectable alteration of the baseline condition of the receptor.
Imperceptible	A barely distinguishable change from baseline conditions.

7.4.19 The sensitivity of the receptor and the magnitude of the predicted impact are used to inform the professional judgment of the likely significance of the direct impact. Table 7.4 (below) summarises the criteria for assigning significance of a direct impact. Major and moderate direct impacts are considered to significant in terms of the EIA regulations.

Table 7.4: Significance of Direct Impacts

Magnitude of Impact	Sensitivity of Receptor			
	High	Medium	Low	Negligible
High	Major	Major	Moderate	Minor
Medium	Major	Moderate	Minor	Negligible

Low	Moderate	Minor	Negligible	Negligible
Imperceptible	Minor	Negligible	Negligible	Negligible

Identification of External Receptors and Characterisation of Setting

- 7.4.20 Historic Scotland guidance (2010) states that ‘*setting*’ should be thought of as the way in which the surroundings of a historic asset or place contribute to how it is experienced, understood and appreciated’. The guidance also notes that ‘*the setting of site often extends beyond the immediate property boundary of a historic structure into the broader landscape.*’
- 7.4.21 Details of previously recorded cultural heritage sites, monuments and landscape features with statutory and non-statutory designations, undesignated archaeological sites of likely national importance, within the landscape surrounding, the proposed development area were obtained. A Zone of Theoretical Visibility (ZTV) map, generated for the proposed development, was used to identify those cultural heritage receptors within 10 km of the proposed development from where there is theoretical intervisibility with one or more wind turbine. Beyond 10 km it is considered that the five proposed turbines would not be a dominant feature in the surrounding landscape and that the impact on the setting of heritage assets, beyond 10 km, would not be significant.
- 7.4.22 The baseline setting of each relevant receptor or related group of receptors was then characterised on a case-by-case basis. Characterisation of setting of a receptor was based upon its properties and location, and took into account the factors identified in the guidance issued by Historic Scotland (2010). The baseline setting of each receptor was characterised principally in terms of the:
- Archaeological / historical context of the receptor.
 - Current landscape and visual surroundings of the receptor.
 - Aesthetic and experiential properties of the receptor within its surroundings.
 - Social value (actual or potential) of the receptor as a recreational / leisure or educational resource.
- 7.4.23 The outcome of this work was an understanding, involving the application of professional judgement, of the key characteristics that define the setting of each receptor.

Assessment of Impacts on Setting

- 7.4.24 For each receptor, where a potential impact on setting has been identified, the assessment of possible impacts has followed a four-stage approach:
- Identification of the characteristics of setting of the receptor (see above).
 - Assessment of the sensitivity of that setting.

- Identification of how the presence of the proposed development will affect that setting (magnitude of impact).
- Assessment of the significance of impact.

Criteria for Assessing Sensitivity of Setting

- 7.4.25 Sensitivity of setting has been assessed by considering two factors:
- The relative weight which statute and policy attach to the receptor and its setting.
 - The degree to which the baseline setting contributes to the understanding and / or appreciation, and hence value, of the receptor.
- 7.4.26 The relative weight that statute and policy attach to the receptor and its setting is determined using the sensitivity of archaeological and heritage resources set out in Table 7.2.
- 7.4.27 The degree to which the baseline setting contributes to the understanding and / or appreciation of the receptor has been assessed according to the criteria set out in Table 7.5.

Table 7.5: Contribution of Setting to Understanding and Appreciation of a Cultural Heritage Receptor

Contribution	Definition
High	A setting which makes a strong positive contribution to the understanding and/or appreciation of the siting and/or historical/archaeological/architectural context of a receptor. (e.g. a prominent topographic location; surroundings that include related monuments in close association; surroundings that are believed to be little changed from those when the receptor was created).
Moderate	A setting which makes some positive contribution to the understanding and/or appreciation of the siting and/or historical/archaeological/architectural context of a receptor. (e.g. surroundings that complement the siting and appearance of a receptor, such as the presence of a feature of the rural past within a more recent farming landscape containing little or no urban or industrial development).
Low	A setting which makes little positive contribution to the understanding and/or appreciation of the siting and/or historical/archaeological/architectural context of a receptor. (e.g. where surroundings only partially complement the siting and appearance of a receptor, such as the presence of a feature of the rural past within a partly urbanised or industrialised landscape).

Negligible	<p>A setting which does not contribute positively to the understanding and/or appreciation of the siting and/or historical/archaeological/architectural context of a receptor.</p> <p>(e.g. immediate surroundings, such as of a commercial coniferous single species woodland or industrial development, that are not relevant to understanding the context of the receptor).</p>
------------	--

7.4.28 These two criteria (sensitivity of receptor and contribution to setting) are combined to assess the overall sensitivity of a setting, as set out in Table 7.6.

Table 7.6: Sensitivity of Setting of a Receptor

Sensitivity of Receptor	Contribution of Setting			
	High	Moderate	Low	Negligible
High	High	High	Medium	Low
Medium	High	Medium	Low	Low
Low	Medium	Low	Low	Low

Identification of Magnitude of Impact on Setting

7.4.29 Where it was established that the setting of a receptor is such that there is no potential for it to be affected by the presence of the development, the receptor has not been considered further in the assessment. For the remaining sites, the magnitude of impact on setting has been assessed according to the thresholds in Table 7.7.

Table 7.7: Magnitude of Impacts on Setting

Level of Magnitude	Definition
High	Fundamental impacts obviously changing the surroundings of a receptor, such that its baseline setting is substantially or totally altered.
Medium	Impacts discernibly changing the surroundings of a receptor, such that its baseline setting is partly altered.
Low	Slight, but detectable impacts that do not alter the baseline setting of the receptor materially.
Imperceptible	A very slight and barely distinguishable change from baseline conditions.

Assessment of Impact Significance

7.4.30 The significance of an impact on setting depends on both the magnitude of the impact and the sensitivity of the setting of the receptor. Table 7.8 presents a matrix that has been used to inform the assessment in combination with professional judgment.

Table 7.8: Significance of Impact on Setting

	Sensitivity of Setting		
Magnitude of Impact	High	Medium	Low
High	Major	Major	Minor
Medium	Major	Moderate	Minor
Low	Minor ¹	Minor	Negligible
Imperceptible	Negligible	Negligible	Negligible

Significance Criteria

- 7.4.31 The significance of impacts is classified as major, moderate, minor or negligible, as defined in Table 7.9. Major and moderate impacts are considered significant in accordance with the Town and Country Planning (Environmental Impact Assessment) (Scotland) Regulations 2011.

Table 7.9: Significance Criteria

Level of Significance	Definition
Major	A change to the fabric or setting that leads to a substantial impact on the character, quality or context of a receptor.
Moderate	Changes to the fabric or setting that lead to a material impact on the character, quality or context of a receptor.
Minor	Changes to the fabric or setting that lead to a detectable but non-material change impact on the character, quality or context of a receptor.
Negligible	Changes to the fabric or setting that lead to, at most, a negligible impact on the character, quality or context of a receptor.

7.5 RESULTS

¹ A non-material change to baseline conditions cannot by its nature lead to a significant impact. A significant impact arises from a material change to baseline conditions. This distinction explains why this particular significance assessment finding is not 'moderate'.

Baseline Conditions

- 7.5.1 Fifteen sites and features of cultural heritage interest have been identified within the proposed development area. Appendix 7.1 provides detailed gazetteer information on the character and baseline condition of each site identified by the study. Numbers in brackets, in the following sections refer to site numbers listed on Figure 36 and listed in Appendix 7.1.
- 7.5.2 There are no Scheduled Monuments or Listed Buildings present within the proposed development site. Although one Scheduled Monument, Pittarhie Castle (870), lies 320 m from the southern boundary of the proposed development area and 600 m from the nearest turbine.
- 7.5.3 No part of the proposed development lies within a Conservation Area or Historic Garden and Designed Landscape.
- 7.5.4 The NMRS and Fife Council SMR contain records for one known cultural heritage site, a possible moated homestead (15) within the proposed development area.
- 7.5.5 Examination of historical maps identified eleven sites of historic environment interest within the proposed development area, including: a series of trackways (2), one sheepfold (3), two former farmsteads (4 and 12), two 'stones' (5 and 6), a cistern (7), a flag staff (8), a series of field boundaries (11), a former mill and lade (13), and a former parish boundary.
- 7.5.6 Examination of aerial photographs provided information on the sites identified from historical maps and identified one additional site, areas of former rig and furrow cultivation (1).
- 7.5.7 The Scottish Palaeoenvironmental Database (SPAD) provided no relevant information specific to the proposed development area.
- 7.5.8 Field reconnaissance survey allowed the character and condition of the sites located through desk-based assessment to be assessed, and identified two further sites, clearance spreads (9 and 10).
- 7.5.9 Consultation of the HLaMap indicates that the proposed development area consists principally of 18th-19th century rectilinear fields surrounding the farms at Kinaldy and Lingo; some of the earlier rectilinear fields have been amalgamated into larger fields during the 19th and 20th centuries. Former areas of fig and furrow remains are recorded as being visible on aerial photographs as cropmarks to the south of Kinaldy Den; these are no longer extant.

Character of the Cultural Heritage within the Development Area

- 7.5.10 A summary is provided below of the character of the cultural heritage sites within the proposed development area (Figure 36). Detailed information on the character and baseline condition of the individual sites and features are provided in Appendix 7.1.

- 7.5.11 The cultural heritage sites and features identified within the proposed development area are all associated with medieval or later rural land use.

Farmsteads and other buildings

- 7.5.12 A farmstead of at least 18th century date is first recorded at South Kinaldy (4) on Roy's Military Survey map (1747-55), annotated as 'Kenawdy'. By the mid-19th century the settlement is recorded as three roofed buildings and two associated enclosures (Ordnance Survey 1st Edition map, 1855). On later maps (Ordnance Survey 2nd Edition 1896 and subsequent maps) the farmstead is shown as only two roofed buildings. By the mid-20th century the farmstead is only partially roofed (visible on 1967 aerial photographs) suggesting that it is no longer inhabited by that date. The remains of the farmstead are now in a dilapidated state and are being used as an animal byre.
- 7.5.13 A second farmstead (12) is depicted on Ainslie's map of 1775, to the north of South Kinaldy, and annotated as 'Mid Kinaldie'. The farmstead is not, however, depicted on subsequent maps; this may mean that it only existed for a short period of time, or that it was a small extension of South Kinaldy. No surface remains of a farmstead survive in the area indicated by Ainslie's map, and the exact location of the site is not known.
- 7.5.14 A mill (13), annotated as 'Kinaldie Mill' together with a lade, is depicted on both Roy's Military Survey map (1747-55) and on Ainslie's map (1775); although it is shown on opposite sides of the river on the two maps (a location on the south side of the river, within the crook bend in the river course, seems more likely). No surviving remains of the mill or lade were identified and the exact location of the mill or course of the lade are not known.
- 7.5.15 A survey carried out in the 1960 by the RCHAMS recorded a rectangular enclosure (15) defined by a turf bank and ditch interpreted the site as a possible moated homestead, potentially of medieval date. The site may be a precursor to Lingo house which first appears on the maps in the 18th century.

Agricultural land-use and other agrarian structures

- 7.5.16 Areas of former rig and furrow cultivation (1) (shown in light green on Figure 36) are visible on vertical aerial photographs (dating to 1967) to south of the Kinaldy Den; however, no surface traces of the rig survive, although rig alignments can be made out in places within the development area on modern aerial photographs (googleearth™).
- 7.5.17 Two spreads of clearance stone (9 and 10) are present at the edge of improved pasture fields. The clearance spreads respect the current field boundaries which are shown on the Ordnance Survey 1st Edition map (1855) and which were probably laid out in the 18th-19th century (Ordnance Survey 1st Edition map 1855) during a period of enclosure and improvement. The clearance spreads representing stone removed from the fields and dumped at the field edges during this improvement activity.

- 7.5.18 The majority of the present field boundaries (11) correspond with the field pattern depicted on the Ordnance Survey 1st Edition map (1855). Some survive as stone walls and some have been replaced with post and wire fences. Overall there appears to have been little change in the field pattern within the last 150 years. Two fields in the northern part of the development site, between Kinaldy Den and Callyone Wood, are shown on the Ordnance Survey 1st Edition map as part of the policies of Kinaldy House. A trackway (Site 2) also leads from the farmsteading at Kinaldy House to South Kinaldy (2.1) and then onwards to Lingo House (2.2). South Kinaldie Farm (4) was evidently part of the Kinaldy Farm Estate.
- 7.5.19 A small rectangular enclosure (3), abutting a field boundary and annotated as 'Sheepfold', is depicted on the 1919 Ordnance Survey map, and subsequent maps up until 1959, to the north of South Kinaldy (4).

Miscellaneous features

- 7.5.20 Two tracks (2.1 and 2.2) are depicted on the Ordnance Survey 1st Edition map linking Kinaldy House with South Kinaldy farm (4); discussed above (6.5.18). An third, now overgrown track (2.3), was recorded during the field survey; cartographic evidence suggests that this is of 20th century date, although it may follow the line of an older track that ran from Beley, via Chesters to South Kinaldy.
- 7.5.21 Two 'stones' (5 and 6) are first depicted on the Ordnance Survey 2nd Edition map (1896) in fields north (5) and east (6) of South Kinaldy farmstead (4). No trace of these 'stones' was found at the locations depicted and it is likely that they have been removed. The stones were probably sheep or cattle 'rubbing stones', rather than prehistoric standing stones. They are not depicted on the Ordnance Survey 1st Edition map (1855).
- 7.5.22 A 'cistern' (7) is depicted on the 1919 Ordnance Survey map, just north of South Kinaldy farm (4). A stone and mortar platform survives at the location shown on the map.
- 7.5.23 A 'flagstaff' (8) is depicted on the Ordnance Survey 1st Edition map (1855), in a field just north of South Kinaldy farm (4) and within what was evidently part of the policies of Kinaldy House. The flagstaff is no longer present.
- 7.5.24 A parish boundary (14), between Dunino and Carnbee parishes, is shown on Ainslie's map (1775) and on subsequent maps. The boundary runs roughly north to south between the Kinaldy Burn in the north and the Lingo Burn in the south, both of which form the continuation of the boundary. This north to south section of the parish boundary may have originally been marked by a bank and ditch; traces of the ditch may still survive, as buried remains. The Fife Council Archaeologist advised (see Table 7.1 above) that the parish boundary may originally be of 12th century date.

Assessment of archaeological potential of the proposed development area

- 7.5.25 The majority of the cultural heritage features identified by this study relate to an 18th and 19th Century improvement landscape. Three cultural heritage features incorporate the name Kinaldy, indicative of a connection with the Kinaldy Estate, situated to the north of the site. The name Kinaldy is annotated on Blaeu's map (1654) and although the current Kinaldy House dates to around 1800, it is probable that the proposed development area has, for at least the last 200 years, been part of the Kinaldy Estate; the various Kinaldy farmsteads (4 and 12) and the mill (13) are probably associated with this land tenure.
- 7.5.26 The proposed development area has not been extensively developed and has been used for agricultural purposes since, at least the mid-19th Century. Today the majority of the development area is still used for arable farmland, with much of it under crop at the time of field survey. In those areas that were accessible, the majority of the features identified by the desk-based assessment were found to be no longer present, but it is probable that buried remains of these former sites and features survive.
- 7.5.27 No features of prehistoric date have been found within the proposed development area and there is little evidence of prehistoric activity in the surrounding area. A flint axe (NMRS No: NO50NW 36) was recovered from a peat bog 300m south of the proposed development and a cist burial (NMRS No: NO51SW 10) is recorded at High Beley, approximately 1 km to the northeast of the proposed development site. Within 500m of the proposed development boundary are recorded remains of medieval and later date, including the ruins of Pittarthie Castle (Scheduled Monument, 820), as well as possible medieval enclosures and areas of rig and furrow cultivation.
- 7.5.28 The Fife Council Archaeologist (18/08/2009 see Table 7.1 above) advises that this part of Fife is rich in archaeology and that the possibility of unrecorded archaeological deposits existing within the proposed development site should be considered high. Given the limited land take required by the separate elements of the proposed development, the probability of encountering hitherto undiscovered sites of archaeological importance during the course of the construction work is, however, considered to be moderate / low.

Significance of the remains

- 7.5.29 The archaeological and architectural heritage sensitivity of the remains known in the proposed development area has been classified according to the method shown in Table 7.2 and the results are presented in Table 7.10.

Table 7.10: Sensitivity of the Cultural Heritage Sites and Features within the Proposed Development Area

Site Number	Site Name	Sensitivity
1	Former Rig and furrow	Negligible
2	Tracks	Negligible
3	Sheepfold	Negligible

4	South Kinaldy farm	Local
5	Stone	Negligible
6	Stone	Negligible
7	Cistern	Negligible
8	Flagstaff	Negligible
9	Clearance spread	Negligible
10	Clearance spread	Negligible
11	Field boundaries	Negligible
12	Mid Kinaldie settlement	Unknown (low)
13	Kinaldy Mill and lade	Unknown (low)
14	Parish Boundary	Unknown (low)
15	Possible moated homestead	Medium

7.5.30 Fourteen sites and features of cultural heritage interest have been identified within the proposed development area.

7.5.31 One site (15) a possible medieval moated homestead (potentially an early and fairly high status farmstead) is judged to be potentially of regional importance as it is likely to preserve valuable archaeological evidence.

7.5.32 One other site, the ruins of South Kinaldy farm (4), is considered to be of local importance and of low sensitivity.

7.5.33 Ten sites and features, areas of former rig and furrow cultivation (1), three tracks (2), a sheepfold (3), two 'stones' (5, 6), a cistern (7), a former flagstaff (8), two clearance spreads (9, 10) and a number of field boundaries (11), are all considered to be of lesser importance and negligible sensitivity.

7.5.34 No surface remains are visible of three sites and features, Mid Kinaldie settlement (12), Kinaldy Mill and lade (13), and a parish boundary (14), however buried remains may survive. These are of unknown importance and sensitivity, although if buried remains do survive they are likely to be of local importance and low sensitivity.

7.6 DEVELOPMENT IMPACT AND MITIGATION

7.6.1 The results of the desk-based study and reconnaissance field survey were considered during the detailed design process. The final proposed development layout as shown on Figure 36 embeds design based mitigation into the siting of the turbines and other infrastructure to avoid archaeological constraints wherever possible.

7.6.2 The assessment of impacts is based upon the proposed development layout shown on Figure 36 and is structured as follows:

- Direct (Construction) Impacts
- Indirect (Operational) Impacts
- Cumulative Impacts

Direct Impacts

- 7.6.3 Any ground breaking activities associated with the construction of the proposed development (such as those required for turbine bases and crane hardstandings, access tracks, cable routes, compounds, etc.) have the potential to disturb or destroy features of cultural heritage interest. Other construction activities, such as vehicle movements, soil and overburden storage and landscaping also have the potential to cause direct, permanent and irreversible impacts on the cultural heritage.
- 7.6.4 Using the criteria detailed in Tables 7.2 to 7.4, Appendix 7.1 summarises the predicted direct impacts on the cultural heritage sites and features identified by the study within the proposed development area. These impacts are discussed in more detail below.
- 7.6.5 The proposed access track at Turbine 3 would cross the line of a track (2.1). The track is still in use as a farm access track and is considered to be of lesser importance and of negligible sensitivity. Only a small section of the track would be affected by construction work. The predicted direct impact on the track is considered to be of imperceptible magnitude and of negligible significance.
- 7.6.6 The proposed access track running between Turbines 3 and 4 would remove a small section of dry-stone field wall (11). This section of wall forms part of a series of dry-stone field boundaries in the proposed development area which were originally laid out in the 18-19th century during the improvement period. They are of little historic environment interest and are considered to be of lesser importance and of negligible sensitivity. Only a very short section of field wall would be affected by construction works and the impact is considered to be of imperceptible magnitude and of negligible significance.
- 7.6.7 The proposed access track running between Turbines 2 and 3 would run close to the location of Mid Kinaldie settlement (12). The exact location of this settlement is unknown and there are no surface remains of the settlement surviving, although it is possible that buried remains associated with the settlement still survive and may be exposed (and possibly disturbed) during ground breaking for the proposed access track. The impact on the settlement is of unknown magnitude and of unknown significance.
- 7.6.8 The line of a parish boundary (14) is recorded as passing north to south across the proposed access track running between Turbines 2 and 3. The line of the parish boundary is now marked by a field boundary fence, although it is possible that buried remains of a ditch, associated with the parish boundary, survive and may be exposed (and possibly disturbed) during ground breaking for the proposed access track in this area. Construction of the access track would affect only a small section of the parish boundary and the predicted impact on the boundary is one of imperceptible magnitude and negligible significance.

Uncertain Impacts

- 7.6.9 In addition to the site specific predictions, stated above, ground disturbing excavations associated with the construction of the proposed development have an adverse impact on any unrecorded, buried archaeological remains present in affected areas. Taking into account the limited extent of the proposed ground disturbance generated by the construction of access tracks, cable routes, turbine bases, hardstanding areas, construction compound and substation, the likelihood of encountering remains of archaeological significance is considered to be moderate / low. The most likely areas of encountering buried remains of known sites are where the proposed access track passes close to the location of Mid Kinaldie (12), and where it crosses the parish boundary (14). Mitigation for these potential impacts are provided below in Section 6.7.

Indirect Impacts

- 7.6.10 A list of those external receptors within 10 km of the proposed development area and predicted by the ZTV to have theoretical views to one or more turbines is provided in Appendices 7.2 and 7.3 and their locations are shown on Figure 37.
- 7.6.11 The proposed development would form a line of five turbines running parallel with the Kinaldy Burn and situated in an area of flat arable fields to the south of Kinaldy House. The ZTV indicates that the proposed development would be most visible within the immediate surrounding landscape (principally within the 5 km buffer) and in more distant views from the east coast in an arc running from Earlsferry in the south to Kingsbarn in the northeast. Views inland and from the southwest, west and northwest would be limited by natural topography.
- 7.6.12 Appendix 7.2 provides a summary assessment of the predicted indirect impacts on a site-by-site basis of the key cultural heritage receptors within 5 km of the nearest proposed turbine over which distance it is considered the proposed development will have the most visual influence. The assessment of the magnitude of impacts provided in Appendix 7.2 has been based on analysis of the blade tip ZTV, taking into account the:
- The distance of the assessed site from the proposed wind farm;
 - The number of blade tips visible; and,
 - The present baseline setting of each site.
- 7.6.13 The ZTV model is, however, a coarse predictive tool based on bare-earth surface topography and maximum blade-tip heights. It takes no account of obstructions to intervisibility caused by existing forestry and other vegetation or buildings and other man-made features. Therefore, professional judgement has been used to assess the significance of impacts informed by the ZTV and field survey.
- 7.6.14 Appendix 7.3 provides a list of the key cultural heritage receptors within 5-10 km of the nearest proposed turbine. The majority of these monuments lie in built-up areas over 7 km from the nearest proposed turbine, or are listed historical country houses and farm buildings which tend to sit in small designed landscapes and enclosed farmsteadings. The setting of

these buildings is the urban environment that constitutes their baseline settings or the designed landscape / group of related farm buildings of which they are an integral part. It is judged that these cultural heritage sites would receive no adverse impact from the proposed development and unless their settings have been requested by Historic Scotland or the Fife Council Archaeologist to be assessed in the ES they are not considered further.

- 7.6.15 Key external receptors within 5 km of the proposed development are assessed in some detail below. One site identified by Historic Scotland to be specifically assessed in the EIA, Pittarhie Castle (870) has been assessed in more detail using a photomontage (see Figure 19.5 in Volume 3 of the ES; Viewpoint 5 in Figure 17.25, Volume 3 of the ES) and discussed below (Sections 6.6.17-20).
- 7.6.16 No significant impacts have been predicted on the setting of cultural heritage receptors in the wider landscape.

Scheduled Monuments

Pittarhie Castle (870 / 4317)

- 7.6.17 The well-preserved ruins of Pittarhie Castle, which is both a Scheduled Monument and a Category B Listed Building, stand at the edge of a improved pasture field approximately 0.3 km from the boundary of the proposed development area and 0.6 km from the nearest proposed turbine. It was constructed in the 16th century for James Monyenny and later connected with the Bruces, being remodelled by William Bruce of Pittarhie in 1653. The castle is recorded as a ruin on Greenwood's map (1828) and has been unoccupied since; the ruins of the castle are still in reasonably good order and the walls stand up to 3-storeys high. The main entrance to the castle is on the south side of the building, at the foot of the stair tower. The castle is in a prominent topographic position on a southward-facing slope and surrounded by open farmland; and it has a strong visual presence and aesthetic appeal. There are clear views out from the castle to the surrounding landscape in all directions, with the longest most open views being to the southeast. The castle is also visible from the surrounding landscape to the south.
- 7.6.18 The current setting of the castle is the improved pasture farmland within which it stands and out over which it looks. The proposed development would be visible to the northwest of the castle ruins and the turbines would be visible, although topographically separated from the site of the castle by the hill crest between the castle and the development. The turbines would not affect other views out from the castle to the surrounding landscape, in particular the existing open views to the south.
- 7.6.19 The castle ruins are visible from the public road (B490) to the south and the proposed turbines would be visible behind the castle when viewed from the southeast. Although the proposed development would introduce new structural features to the landscape, it is a permeable development and the open arable farmland setting in which the castle stands and out over which it looks would be largely retained. The presence of the proposed turbines would detract somewhat from the visual appearance of

the castle when viewed from the surrounding landscape but would not diminish appreciation of the structure and form of the castle, nor affect an understanding of its function as a high status, fortified residence.

- 7.6.20 The impact of the proposed development on the setting of the castle is judged to be of medium magnitude (impacts discernibly changing the surroundings of a receptor, such that its baseline setting is partly altered). Strict application of the assessment matrix (Table 7.8) results in a potential impact of major significance and in certain views (Figure 17.26, viewpoint 26, for example) the turbines appear in close relationship with the structure and can appear visually dominant. In other views (Figure 17.25, viewpoint 25 and Figure 17.5, viewpoint 5) the visual dominance is less apparent. The development does not surround or enclose the castle ruins, which lie on private farmland and presently have limited amenity value, and the impact on the value of the site as a heritage monument would not be substantially diminished. Therefore, it is considered that the effect on the monument is more properly of moderate significance but none-the-less a material consideration when weighed against other interests.

Other Scheduled Monuments

- 7.6.21 There are no other Scheduled Monuments within a 5 km radius of the proposed development site.

Listed Buildings

Kinaldy House and associated structures

- 7.6.22 Category B Listed Kinaldy House (2699) is situated 1 km to the north of the proposed development. The country house, originally dating to around 1800 with later remodelling during the second part of the 19th century, stands within a small, designed landscape which also includes several other associated listed buildings including: the Category B Listed Kinaldy Dovecot (2702), and Kinaldy Farmhouse and Steading (6710); and the Category C(S) Listed Kinaldy House Offices (2700), Kinaldy Cottages (2701), and Kinaldy Farm Cottages (2703).
- 7.6.23 Kinaldy House (2699) stands in a secluded location separately from the other buildings in the group, within a small designed garden which includes a formal garden adjoining the house to the east side and open parkland with ponds to the southeast. The main elevations of the house are orientated northwest (front) and southeast (rear); views north and east to and from the house are restricted by woodland shelterbelts, whilst views to the southeast are over open ground towards Kinaldy Den and across to the hillside beyond. The proposed development would occupy this hillside beyond Kinaldy Den, which forms the skyline in that direction and was originally part of the early 19th century policies. The presence of the proposed turbines would not affect the relationship between Kinaldy House and its other associated buildings, which lie close by and to the west, and they would be visually separated from the immediate landscape,

within which the house sits, by the intervening woodland along Kinaldy Den. However, the proposed turbines would be a new structural element in the currently open, rural aspect in views from the rear of the property. Whilst the introduction of the wind farm would be visible in the landscape view it would not diminish appreciation of the architectural value of the house but it would represent a change in the character of the setting of the house, especially the view southeastwards over the former policies. The impact on the setting of Kinaldy House would therefore be of medium magnitude (an impact discernibly changing the surroundings of a receptor, such that its baseline setting is partly altered) resulting in an impact of moderate significance.

- 7.6.24 The other buildings associated with Kinaldy House stand in small enclosed steadings and have limited views out to the surrounding landscape. The setting of these structures individually and collectively is the group of related farm buildings to which they are connected and the wider former farm policies of which they are a part. The presence of the proposed turbines would not materially affect those relationships and the farmyard setting in which the buildings stand would remain unaffected. It is therefore considered that the impact on the setting of these buildings would be no more than of imperceptible magnitude and of negligible significance.

Stravithie House and associated structures

- 7.6.25 Category C(S) Listed Stravithie House (4318) is situated approximately 2.2 km to the northwest of the proposed development. The country house stands within a small designed landscape that includes several other associated listed buildings, including: Category B Listed Stravithie House stables (4321) and Stravithie Mill (4322), and Category C(S) Listed lodges (4319), Stravithie House Mill (4320) and Stravithie Mill Cottages (4323).
- 7.6.26 The house along with the stables, mill (4320) and lodge are situated within woodland policies which limit views out to the surrounding landscape. The main elevations of the house are orientated northeast to southwest and none of the proposed turbines would be visible in these views. Stravithie House Mill (4322) and its associated cottages (4323) stand separate from the main house, situated around 0.5 km to the north. These are now private residential properties situated on the northern banks of Cameron Burn, immediately west of the public B9131 road, and screened partially by trees.
- 7.6.27 The setting of these buildings is the designed landscape which they form an integral part of, and their relationship to other buildings / structures within that landscape. The presence of the proposed development, over 2 km away, would not materially change the character of the immediate landscape in which they stand, nor would it affect the relationship between the associated buildings, and it is judged that the impact on these buildings would be of imperceptible magnitude and of negligible significance.

Other Listed Buildings

- 7.6.28 There are a further 17 Category B Listed Buildings and 22 Category C(S) Listed Buildings within 5 km of the proposed development. The majority of these are historic farmhouse or churches and associated buildings / structures. They stand in either small enclosed farmsteadings or churchyards that have localised settings, and their settings are the group of related buildings of which they form an integral part. The presence of the proposed development would not materially affect those relationships and the character of the immediate landscape in which they stand would be unaffected. The impact of the proposed development on the setting of these buildings would be of no more than imperceptible magnitude and of negligible significance.

Cumulative Impacts

- 7.6.29 The visual influence of the proposed development at Lingo on cultural heritage receptors is predominantly within the immediate landscape (principally within the 5 km buffer). Landscape and Visual Chapter 4 (Volume 1), Figure 19.5 (Volume 3) shows that within 10 km of the proposed development there are large scale three wind farms in planning (Balduthio, South Cassingray Farm and Troy Wood) and one at the application stage (Kenly). These are small schemes of no more than 1 or 2 turbines each.
- 7.6.30 In the wider landscape (30 km buffer) there are an additional two consented wind farms (Tealing Airfield and Dundee Cold Stores), one operational wind farm at Baldovie, and five wind farm schemes in planning (Dundee Docks, Newington Farm, Clatto Fram, Devon Wood, Bosch Rexroth and Earlseat). Again, the majority of these are single turbine schemes. The closest large wind farm scheme would be the six turbine wind farm at Clatto Farm, present approximately 15 km to the southwest. While, another large wind farm scheme, nine turbines in total, would be present around 20 km to the southeast (Earlseat).
- 7.6.31 The closest cultural heritage external receptor to the site and that with the most sensitive setting in terms of cumulative impacts is the Scheduled Pittarhie Castle (870). This lies 0.6 km from the proposed Lingo turbines. Wide views out to the surrounding landscape are afforded from the monument. Within 5 km of the proposed development there are three additional wind farm schemes to the proposed Lingo turbines, Troy Wood, Balduthio and South Cassingray Farm. If all of these schemes were to be consented then turbines would be visible from the castle in a wide arc from the southwest to the east, the closest wind farm being the proposed Lingo development.
- 7.6.32 There would be a cumulative impact on the setting of this monument, however the other wind farm developments are all small schemes of no more than 1 or 2 turbines each, and the cumulative impact on Pittarhie Castle is considered to be no greater than that resulting from the individual impact of the proposed Lingo development on the setting of the castle.
- 7.6.33 The cultural heritage sites in the wider landscape are primarily listed buildings which are either situated within enclosed village settings or comprise historical country houses and farm buildings which stand in small designed landscapes or enclosed farmsteadings. Most of these

sites do not have intended long distant views out to the surrounding landscape. There would be cumulative impacts, of varying degrees, on the setting of these sites from the proposed Lingo development in combination with other wind farm schemes in their immediate vicinities. It is, however, considered that the cumulative impact of the proposed Lingo development on the setting of these monuments would be no more than of imperceptible magnitude and not significant.

7.7 MITIGATION

7.7.1 Except where otherwise stated all mitigation works presented in the following paragraphs will take place prior to or during the construction of the proposed development. All works will be conducted by a professional archaeological organisation, and the scope of works will be detailed in a Written Scheme of Investigations (WSI). The WSI will make provision for appropriate post-excavation analysis and dissemination of the results of the mitigation works, as well as for archiving of the project materials and records. The WSI will be subject to the approval of the Fife Council Archaeologists

Preservation in situ

7.7.2 Where sites and features lie in close proximity to proposed development features they will be avoided as far as practical to ensure their preservation in situ. Where appropriate, sites will be either fenced off or visibly marked-out to prevent accidental damage occurring to the remains during construction activities in the vicinity.

- Clearance spread (9) which lies in close proximity to the access track between Turbines 3 and 4 will be avoided during construction works.

Watching Briefs

7.7.3 The scope of any watching brief will be agreed in advance of development with the Fife Council Archaeologist. This will be set out in the WSI. Various elements of the proposed development pass close to or cross a number of features and in order to ensure that these are properly identified and recorded watching briefs will be carried out at the following locations:

- A watching brief will be carried out during ground breaking for the proposed access track where it runs close Mid Kinaldie settlement (12). The purpose of this watching brief would be to identify and record any surviving remains of the settlement, and, if possible to recover some dating evidence for its construction / abandonment.
- A watching brief will be carried out during ground breaking for the proposed access track where it crosses a parish boundary (14). The purpose of this watching brief would be to identify and record any surviving remains of the settlement, and, if possible to recover some dating evidence for its construction / abandonment.

7.7.4 No further mitigation is required for former rig and furrow cultivation (1), track (2.1) and a small section of field wall (11). The rig and furrow

remains no longer survive having been ploughed out; the track (2.1) forms part of a modern farm access track, and the field wall is of little historic environmental interest. All of these features are of lesser importance and negligible sensitivity.

Post-Excavation

- 7.7.5 If significant discoveries are made during archaeological monitoring and preservation in situ of any sites or features is not possible, provision would be made for the excavation, where necessary, of any archaeological remains encountered. This provision would include the consequent production of written reports on the findings, with post-excavation analyses and publication of the results of the works, where appropriate.

Construction Guidelines

- 7.7.6 Written Guidelines will be issued for use by all construction contractors, outlining the need to avoid causing unnecessary damage to sites. That document will contain arrangements for calling upon retained professional support in the event that buried archaeological remains of potential archaeological interest (such as human remains, artefacts etc) should be discovered in areas not subject to archaeological monitoring. The guidance will make clear the legal responsibilities placed upon those who disturb artefacts or human remains.

7.8 REFERENCES

Bibliographic References

Campbell, D. 1791-99 'Parish of Glassary' in the Statistical Account of Scotland, vol.13, 653-664.

Historic Scotland (2010). Managing Change in the Historic Environment: Setting, October 2010

IfA 2009 Standard and Guidance for Archaeological Desk-based Assessment. Institute for Archaeologists.

IfA 2010 By-Laws: Code of Conduct. Institute for Archaeologists.

International Council on Monuments and Sites (ICOMOS) (2005). Xi'an Declaration on the Conservation of the Setting of Heritage Structures, Sites and Areas', adopted in Xi'an, China by the 15th General Assembly of ICOMOS (2005).

Roger, J. 1834-45 'Dunino, County of Fife' in the Statistical Account of Scotland, vol.9 p.356

Taylor, A .1834-45 'Carnbee, County of Fife' in the Statistical Account of Scotland, vol.9 p.913

West, W. 1791-99 'Dunino, County of Fife' in the Statistical Account of Scotland, vol.11 p.352

Cartographic References

Adair, J 1684 The East part of Fife

Ainslie, J 1775 Counties of Fife and Kinross with the Rivers Forth and Tay

Blaeu, J 1654 The East part if Fife

Greenwood C, Fowler W and Sharp T 1828 Map of the counties of Fife and Kinross

Moll, H 1745 The shires of Fife and Kinross

Ordnance Survey 1855 Fifeshire Sheet XV S.W. Six inches to one mile

Ordnance Survey 1896 Fifeshire Sheet XV S.W Six inches to one mile

Ordnance Survey 1919 Fifeshire Sheet XV S W Six inches to one mile

Ordnance Survey 1959 National Grid NO40NE Six inches to one mile

Ordnance Survey 1959 National Grid NO50NW Six inches to one mile

Ordnance Survey 1959 National Grid NO51SW Six inches to one mile

Ordnance Survey 1972 National Grid NO40NE Six inches to one mile
 Ordnance Survey 1972 National Grid NO50NW Six inches to one mile
 Ordnance Survey 1976 National Grid NO51SW Six inches to one mile
 Roy, W 1747-1755 Military Survey of Scotland,
 Thomson, J and Johnson, W 1820 Fife with Kinross shire

Photographic Reference

Vertical Aerial Photographs

Sortie	Frames	Date	Scale
106G/Scot/UK 5	3174-3179	14/04/1946	1:10,000
OS/55/12	67305, 022-028 67304, 140-147 0221-0226	07/08/1967	1:7,500
1788	075-077	09/06/1988	1:24,000

APPENDIX 6.1: Cultural heritage sites and features within the proposed development site

Site no	Site name and type	Easting	Northing	Source	Site description	Site Sensitivity	Predicted Effect	Magnitude of Effect	Significance of Effect
1	Relict rig and furrow cultivation			HLA Map; Aerial photographs; Field survey	<p>The Historic Land-use Assessment map records an area of rig (discernable by cropmarks) of medieval or post-medieval date, north of South Kinaldy.</p> <p>Areas of rig and furrow are visible on the 1967 aerial photographs.</p> <p>Field survey recorded that no surface remains of the rig and furrow cultivation survive. The area has been extensively ploughed.</p>	Negligible	None	None	None
2	Trackways			Historical maps; Aerial Photographs; Field survey	<p>A track is depicted on Ainslie's 1775 map, Thomson's 1820 map and Greenwood's 1828 map, running north – south and leading from South Kinaldy to Kinaldy House.</p> <p>The track is also depicted on the Ordnance Survey 1855, 1896, 1919 and 1959 Edition maps. The Ordnance Survey 1st Edition (1855) map shows the track joining the track to Lingo House.</p> <p>The track is visible on the 1946 and the 1967 aerial photographs.</p> <p>Field survey recorded that:</p> <p>2.1: This northern section of track is still in use as a gravel farm track (5m wide).</p> <p>2.2: The southern part of the north-south track no longer survives as a formal track where it crosses a pasture field.</p> <p>2.3: Field survey recorded an east – west aligned farm track between two fields. The track is 5m wide and is now overgrown and out of use. The track is flanked by established trees. Cartographic evidence suggests that this track is of 20th century date.</p>	Negligible	A small section of track (2.1) would be crossed by proposed access track at Turbine 3	Imperceptible	Negligible
3	Sheepfold	351224	709731	Historical maps; Field survey	A rectangular sheepfold is first depicted on the Ordnance Survey 1919 and 1959 edition maps, but is not depicted on the 1972 Ordnance survey map.	Negligible	None	None	None

Site no	Site name and type	Easting	Northing	Source	Site description	Site Sensitivity	Predicted Effect	Magnitude of Effect	Significance of Effect
					<p>The 1967 aerial photograph shows a cleared area which corresponds to the mapped location of the sheepfold. No structural features are visible.</p> <p>Field survey recorded that the site of the former sheepfold is now within an arable field. There was standing crop at the time of field survey and therefore the site location was not visited directly. There are unlikely to be any upstanding remains of this feature. The sheepfold is not depicted on current maps.</p>				
4	South Kinaldy Farmstead	351267	709210	Historical maps; Statistical Accounts; Aerial photographs; Field survey	<p>A settlement, annotated as 'Kenwady' is depicted on Roys map (1747-55). The same settlement is shown on Ainslie's map (1775) and Thomson's map (1820) annotated as 'South Kinaldie'. The same settlement is also shown on Greenwood's map (1828) annotated as 'Upper Kinaldie'.</p> <p>The Ordnance Survey 1st Edition map (1855) records a farmstead comprising of two roofed rectangular buildings, one roofed square building and two associated enclosures. By the Ordnance Survey 2nd Edition map (1896) the farmstead is depicted as only two rectangular buildings, the square building and enclosures no longer depicted. The farmstead is also depicted on subsequent Ordnance Survey maps up until 1972.</p> <p>The Statistical Account (1791-99) mentions that 'Kinaldy' is of 'Celtic derivation' suggesting that the place-name has potentially early origins.</p> <p>The farmstead is visible on aerial photographs dating to 1967, only one of the rectangular buildings remains roofed and the square structure depicted on the Ordnance Survey 1st Edition map is not visible.</p> <p>Field survey recorded that the surviving remains of the farmstead are now in a dilapidated state, with the main living quarters utilized as a livestock byre. The stone walls are mortared and the doorways and windows are framed with ashlar blocks. The main building (16m by 4m and on an E-W alignment) is</p>	Low	None	None	None

Site no	Site name and type	Easting	Northing	Source	Site description	Site Sensitivity	Predicted Effect	Magnitude of Effect	Significance of Effect
					divided into the living quarters (still roofed) and a possible byre (unroofed). The roof is now mostly covered with corrugated iron, but pan tiles are still visible in places. To the SW of the main building is a possible barn (unroofed and measuring 8m by 4m and on a N – S alignment); the W elevation is now missing. No upstanding remains survive of the square building depicted on the Ordnance Survey 1 st Edition. The location of this former structure lies within dense vegetation and although areas of stone rubble are present it is uncertain if these relate to the main buildings or to the demolished remains of the small square building.				
5	Stone	351207	709509	Maps; Aerial Photographs; Field survey	A 'stone' is annotated north of South Kinaldy farmstead (4) on the Ordnance Survey 2nd Edition map (1896) and subsequent maps. The 1967 aerial photograph shows that the stone is within a cultivated field. Field survey found no trace of the stone within a pasture field.	Negligible	None	None	None
6	Stone	351597	709219	Maps; Field survey	A 'stone' is annotated east of South Kinaldy Farmstead (4), within a cultivated area on the 2nd Edition Ordnance Survey (1896) and subsequent maps. Field survey found no trace of the stone within a pasture field.	Negligible	None	None	None
7	Cistern	351334	709502	Maps; Field survey	A cistern is annotated on the 1919 and 1972 Ordnance Survey maps, north of South Kinaldy Farmsteads (4). Field survey recorded the remains of a rectangular stone and mortar bonded platform at the same location as the cistern annotated on historical maps. The structure (3m long by 1.5m wide and 0.3m high) has later field clearance stone piled on top of it.	Negligible	None	None	None
8	Flag staff	351276	709855	Maps; Field survey	A 'flagstaff' is depicted on the Ordnance Survey 1st Edition map (1855).	Negligible	None	None	None

Site no	Site name and type	Easting	Northing	Source	Site description	Site Sensitivity	Predicted Effect	Magnitude of Effect	Significance of Effect
					At the time of field survey, the location of the flag staff was within a field of standing crop and therefore not visited directly. It is unlikely that the flagstaff survives due to modern intensive agricultural processes.				
9	Clearance spread	351196	709436	Field survey	Field survey recorded an area of clearance (5m by 2m) situated on the edge of a pasture field now utilized for pasture. Established trees have grown over some parts of the clearance.	Negligible	None	None	None
10	Clearance spread	351253	709672	Field survey	Field survey recorded an area of grassed over field clearance stone (6m by 3m and 0.5m high) at the edge of a pasture field.	Negligible	None	None	None
11	Field boundaries			Maps; Field survey	<p>The Ordnance Survey 1st Edition map (1855) and subsequent maps show a field pattern of regular rectangular enclosures.</p> <p>Field survey recorded that the majority of the field boundaries still survive as stone walls (typically 1m high), although some have been replaced by modern post and wire fences. One (11.2) has been destroyed, but a low bank (0.75m wide and 0.4m high) still survives to mark its former course.</p>	Negligible	A small section of wall would be removed by the proposed access trackrunning between Turbines 3 and 4.	Imperceptible	Negligible
12	Mid Kinaldie settlement	350993	709610	Maps; Field survey	<p>A settlement, annotated as 'Mid Kinaldie', is depicted on Ainslie's 1775 map. The site is not depicted on subsequent maps.</p> <p>No surface trace of this settlement was visible during the field survey. It's possible that buried remains associated with Mid Kinaldie survive.</p>	Unknown (Low)	Lies in close proximity to the proposed access track to Turbine 4.	Unknown	Unknown
13	Kinaldy Mill and lade	351300	709970	Maps; Field survey	<p>A mill and possible lade, annotated as Kinaldie's Mill is depicted on Ainslie's 1775 map. Roy's (1747-1755) map also depicts the mill, but shows it as being on the opposite of the river, near Kinaldy House. The Ordnance Survey 1st Edition does not depict Kinaldy Mill.</p> <p>Field survey found no trace of either the mill or the lade. The site was within a field of standing crop at the time of the field survey and therefore not visited directly. Although it is very unlikely that there are any</p>	Unknown (Low)	None	None	None

Site no	Site name and type	Easting	Northing	Source	Site description	Site Sensitivity	Predicted Effect	Magnitude of Effect	Significance of Effect
					upstanding remains here, buried remains may still be present.				
14	Parish Boundary Ditch (possible)			Historical maps; Fife Council Archaeologist	<p>A parish boundary, running between the settlements at Lingo and South Kindalie, is shown on Ainslies map of 1775 and subsequent maps (Thomson 1820, Greenwood 1828).</p> <p>In response to a consultation letter, the Fife Council archaeologist stated that a parish boundary runs across the site and that this may have been originally a ditch, potentially dating to the 12th Century.</p> <p>The boundary is now marked by a field boundary fence. The ditch may survive as a buried feature.</p>	Unknown (Low)	A small section would be crossed by the proposed access track running between Turbines 2 and 3.	Imperceptible	Negligible
15	West Lingo, moated site	34964	70877	NMRS;	<p>The NMRS records that survey work carried out by the RCAHMS in 1954 recorded the presence of a small earthwork in flat and marshy ground to the east of Lingo Big Wood. The earthwork comprised of a rectangular enclosure defined by a turf bank and external ditch. Overall the feature measured 32 m long by 24 m wide. The ditch, the west side of which incorporates part of an old watercourse, measured from 3-4m wide but was no more than 0.5 m deep. The bank, which was traceable only on the east and west sides was 0.3m high and spread to an average width of 4.5 m. There was no definite indication of an entrance and the interior of the enclosure was featureless.</p> <p>Later survey (1968) by the Ordnance Survey recorded that the earthwork had been almost completely destroyed by ploughing and only faint traces of the ditch could be seen on the east, west and south sides while the bank was barely discernible.</p>	Medium	None	None	None

APPENDIX 6.2: Key cultural heritage receptors within a 5 km radius of the wind farm

Site no	Site name	Status	Easting	Northing	No of turbines visible	Distance to nearest turbine (km)	Sensitivity of Receptor	Setting	Contribution of Setting	Sensitivity of Setting	Effect Magnitude	Significance of Predicted Effect
870 / 4317	Pittarhie Castle	Scheduled Monument / Category B Listed	352133	709104	5	0.6	High	The well-preserved ruins of a three storey 17th century tower house. Standing at the edge of a improved pasture field in a prominent topographic position. The remains of an associated enclosure are just visible to the SW of the building ruins. The main entrance to the castle is on the S side of the building. Surrounded by open flat arable fields.	Moderate	High	Medium	Moderate
49	Dunino Church	Category B Listed	354100	710930	5	2.7	Medium	Situated in small graveyard to E of Dunino Burn on edge of Dunino village. Orientated ENE to WSW. Entrance on N side of building. Views to W and SW partially screened by woodland running along Dunino Burn.	High	High	Imperceptible	Negligible
142	Cameron Parish Church	Category B Listed	348452	711639	5	2.8	Medium	Situated in small graveyard. Orientated WNW-ESE, entrance from NW side. Forms part of a small hamlet along with several other listed buildings including Cameron House (2678) and Cameron Manse (2680). Surrounded by open arable farmland.	High	High	Imperceptible	Negligible
143	Cameron Farmhouse	Category B Listed	347416	711624	5	3.6	Medium	Farmhouse. Enclosed farm setting. Next to large modern farm barns. Surrounded by woodland.	Moderate	Medium (localised)	Imperceptible	Negligible
2642	Cassindonald Farmhouse	Category B Listed	346459	712220	5	4.7	Medium	Farmhouse. Enclosed farm setting. Surrounded by large modern barns.	Moderate	Medium (localised)	Imperceptible	Negligible
2676	Bridgetoun Bridge	Category B Listed	351203	712026	4	2.5	Medium	Road Bridge. River setting.	High	High (localised)	Imperceptible	Negligible
2677	Cameron Parish Churchyard	Category B Listed	348448	711620	5	2.8	Medium	Small graveyard surrounding Cameron Parish Church (142). Forms part of a small hamlet along with several other listed buildings including Cameron House (2678) and Cameron Manse (2680). Surrounded by open arable farmland.	High	High (localised)	Imperceptible	Negligible
2684	Carngour Farmhouse	Category B Listed	352009	712618	5	3.0	Medium	Farmhouse. Enclosed farm setting. Surrounded by open arable land.	High	High (localised)	Imperceptible	Negligible
2693	Drumhead Farmhouse Peat Inn	Category B Listed	345504	710084	5	4.9	Medium	Farmhouse. Surrounded by open arable farmland.	Moderate	Medium (localised)	Imperceptible	Negligible
2695	Feddinch Mains Farmhouse	Category B Listed	348896	713901	1	4.5	Medium	Enclosed farm setting. Surrounded by open farmland.	Moderate	Low (localised)	Imperceptible	Negligible
2699	Kinaldy House	Category B Listed	351217	710445	5	1.0	Medium	Country house. Main elevations orientated NW and SE. Stands in small designed landscape.	Moderate	Medium	Medium	Moderate
2702	Kinaldy House Dovecot	Category B Listed	351068	710457	5	1.0	Medium	Situated at edge of flat arable field. Immediately N of Kinaldy House and associated farm buildings. Surrounded by open arable farmland.	Moderate	Medium (localised)	Imperceptible	Negligible
4314	Dunino Churchyard and Walls	Category B Listed	354081	710929	5	2.6	Medium	Churchyard surrounding Dunino Church (49). Enclosed setting. Screening to W and SW from woodland running along Dunino Burn.	High	High (localised)	Imperceptible	Negligible
4316	Dunino Manse	Category B Listed	354057	711026	5	2.7	Medium	Stands in small designed garden. Partially screened from the surrounding landscape by trees. Main elevations orientated to NW and SE; views concentrated on Dunino Church (49) which lies immediately SE of manse.	High	High (localised)	Imperceptible	Negligible
4321	Stravithie House, Stables	Category B Listed	353281	711168	5	2.2	Medium	Forms part of small designed landscape surrounding Stravithie House (4318). Situated just NW of house. Forms part of an rectangular steading. Enclosed setting.	High	High (localised)	Imperceptible	Negligible
4322	Stravithie Mill	Category B Listed	353508	711731	5	2.7	Medium	Forming grain mill no longer in use, renovated as residential property. River side setting. Immediately W of public road (B9131).	Moderate	Medium (localised)	Imperceptible	Negligible

Site no	Site name	Status	Easting	Northing	No of turbines visible	Distance to nearest turbine (km)	Sensitivity of Receptor	Setting	Contribution of Setting	Sensitivity of Setting	Effect Magnitude	Significance of Predicted Effect
								Surrounded by open arable farmland.				
4332	Airdrie House	Category B Listed	356662	708463	5	5.0	Medium	Farm house. Immediately W of modern farm steading. Situated in small designed garden. Surrounded by woodland.	Moderate	Medium (localised)	Imperceptible	Negligible
4334	Kingsmuir Farm, House	Category B Listed	353607	708435	5	2.2	Medium	Farmhouse. Enclosed farm setting. Surrounded by woodland.	Moderate	Medium (localised)	Imperceptible	Negligible
6710	Kinaldy Farmhouse and Steading	Category B Listed	350687	710687	5	1.2	Medium	Farmhouse and associated steading. Enclosed farm setting. Surrounded by modern farm barns.	Moderate	Medium (localised)	Imperceptible	Negligible
8643	West End (Formerly West End Cottages) Largo Road Largoward	Category B Listed	346443	707244	5	4.5	Medium	Forms part of Largoward Village. Enclosed village setting.	Moderate	Medium (localised)	Imperceptible	Negligible
8644	Durham Cottage and Royal Bank Office Durham Place Largoward	Category B Listed	346611	707390	5	4.3	Medium	Forms part of Largoward Village. Enclosed village setting.	Moderate	Medium (localised)	Imperceptible	Negligible
8646	Largoward Parish Church	Category B Listed	346932	707707	5	3.9	Medium	Forms part of Largoward Village. Enclosed village setting.	Moderate	Medium	Imperceptible	Negligible
15833	Gregory's Pillar Scoonie Hill	Category B Listed	350988	714197	5	4.7	Medium	A stone shaft 9ft high bearing an iron meridian staff. Reputed to have been originally constructed about a mile south of St Andrews University Library in the 17th century by James Gregory, Regius Professor of Mathematics at St Andrews, so that he could align his telescope at the library to the pillar and make observations on an eclipse of the moon. Situated in the garden of a farm cottage and standing immediately E of large modern farm barns.	Moderate	Medium	Imperceptible	Negligible
144	Feddinch House	Category C(S) Listed	348510	713464	5	4.3	Low	Country House. Surrounded by fragmentary designed landscape. Several news buildings have been constructed around the house so that if now forms part of a small housing estate. Surrounded by woodland.	Moderate	Medium	Imperceptible	Negligible
2641	Carngour Farm Cottages	Category C(S) Listed	352140	712661	5	3.1	Low	Enclosed farm setting. Surrounded by open farmland.	High	Medium (localised)	Imperceptible	Negligible
2663	Lathockar Mains Farmhouse	Category C(S) Listed	348878	709450	5	1.5	Low	Farmhouse. Enclosed farm setting. Next to large modern farm barns.	Moderate	Low (localised)	Imperceptible	Negligible
2668	Prior Letham Farmhouse	Category C(S) Listed	349734	712679	5	3.1	Low	Farmhouse. Enclosed farm setting. Surrounded by large modern barns.	Moderate	Low (localised)	Imperceptible	Negligible
2669	Prior Letham Steading (Modern Additions Excluded)	Category C(S) Listed	349747	712725	5	3.2	Low	Enclosed farm setting. Surrounded by large modern barns.	Moderate	Low (localised)	Imperceptible	Negligible
2670	Prior Letham Smithy (Rainbow Cottage)	Category C(S) Listed	349070	712971	5	3.6	Low	Situated Immediately W of the public road (A915). Stands in small garden and mature hedge screens views to the E and S.	Moderate	Low (localised)	Imperceptible	Negligible
2671	Winthank Farmhouse	Category C(S) Listed	347805	713210	5	4.4	Low	Farmhouse. Enclosed farm setting. Immediately N of large modern farm barns.	Moderate	Low (localised)	Imperceptible	Negligible
2678	Cameron House	Category C(S) Listed	348468	711703	5	2.8	Low	Country House. Forms part of a small hamlet along with several other listed buildings including Cameron Parish Church (142) and Cameron Manse (2680). Situated in small area of woodland just N of Parish Church. Surrounded by open arable farmland.	High	Medium (localised)	Imperceptible	Negligible
2679	Cameron House (Walled Garden)	Category C(S) Listed	348458	711665	5	2.8	Low	Walled garden located between Cameron House (2678) and Parish Church (142). Enclosed setting.	High	Medium (localised)	Imperceptible	Negligible
2680	Cameron Manse (Cameron Manse Offices)	Category C(S) Listed	348424	711720	5	2.9	Low	Formerly Cameron Manse Offices now private residential property. Forms part f a small hamlet along with several other listed buildings including Cameron Parish Church (142) and Cameron House (2678). Partially surrounded by trees.	Moderate	Low (localised)	Imperceptible	Negligible
2681	Cameron School and	Category C(S) Listed	348692	711491	5	2.5	Low	Former School House now student voluntary	Moderate	Low (localised)	Imperceptible	Negligible

Site no	Site name	Status	Easting	Northing	No of turbines visible	Distance to nearest turbine (km)	Sensitivity of Receptor	Setting	Contribution of Setting	Sensitivity of Setting	Effect Magnitude	Significance of Predicted Effect
	Schoolhouse, Now Student Voluntary Service Building							service building. Immediately W of public road (A915). Surrounded by open arable farmland.				
2682	Cameron Steading (Old Part Only)	Category C(S) Listed	347361	711650	5	3.6	Low	Enclosed farm setting. Surrounded by large modern farm barns.	Moderate	Low (localised)	Imperceptible	Negligible
2683	Cameron Farm Cottages	Category C(S) Listed	347257	711675	5	3.7	Low	Farm cottage situated at edge of farmstead. Enclosed farm setting. Next to large modern farm barns.	Moderate	Low (localised)	Imperceptible	Negligible
2685	Carngour Steading	Category C(S) Listed	352087	712644	5	3.1	Low	Enclosed farm setting. Surrounded by open farmland.	High	Medium (localised)	Imperceptible	Negligible
2694	Feddinch Steading and Cottage	Category C(S) Listed	348645	713467	5	4.2	Low	Now forms part of a modern housing estate on the edge of Feddinch House designed gardens. Enclosed setting.	Low	Low (localised)	Imperceptible	Negligible
2696	Feddinch Mains Farm Cottages	Category C(S) Listed	349212	713836	1	4.4	Low	Farm cottages located immediately W of public road (A915). Surrounded by open arable farmland.	Moderate	Low (localised)	Imperceptible	Negligible
2698	Hazel Cottage	Category C(S) Listed	348736	711231	5	2.3	Low	Immediately E of public road (A915). Enclosed setting. Partially screened by trees on E and S sides.	High	Medium (localised)	Imperceptible	Negligible
2700	Kinaldy House Offices (Front Section Only)	Category C(S) Listed	351034	710379	5	0.9	Low	Enclosed farm setting. Next to large modern farm barns.	Moderate	Low (localised)	Imperceptible	Negligible
2701	Cottages at Kinaldy House Offices	Category C(S) Listed	351020	710393	5	0.9	Low	Farm Cottages. Enclosed farm setting. Next to large modern farm barns.	Moderate	Low (localised)	Imperceptible	Negligible
2703	Kinaldy Farm Cottages	Category C(S) Listed	350684	710590	5	1.1	Low	Farm Cottages. Situated at S edge of Kinaldy Farm. Farm setting.	Moderate	Low (localised)	Imperceptible	Negligible
2704	Lathockar Farmhouse	Category C(S) Listed	349259	710996	5	1.8	Low	Enclosed farm setting. Surrounded by large modern barns. Partially screened by woodland to S.	Moderate	Low (localised)	Imperceptible	Negligible
2705	Lathockar Steading	Category C(S) Listed	349292	711005	5	1.8	Low	Enclosed farm setting. Surrounded by large modern barns. Partially screened by woodland to S.	Moderate	Low (localised)	Imperceptible	Negligible
2706	Lathockar Farm Cottage and Store	Category C(S) Listed	349278	710978	5	1.7	Low	Enclosed farm setting. Surrounded by large modern barns. Partially screened by woodland to S.	Moderate	Low (localised)	Imperceptible	Negligible
4312	Beley Bridge	Category C(S) Listed	354102	710189	5	2.4	Low	Road Bridge. River setting.	High	Medium (localised)	Imperceptible	Negligible
4315	Dunino Churchyard, Sundial	Category C(S) Listed	354090	710908	5	2.6	Low	Sculptured stone re-used as a sundial. Situated in Dunino Church graveyard. Enclosed graveyard setting.	Low	Low (localised)	Imperceptible	Negligible
4318	Stravithie House	Category C(S) Listed	353393	711183	5	2.2	Low	Country house. Main elevations orientated NW and SE. Stands in designed landscape that includes several other associated listed buildings including stables (4321), mills (4320), and lodge (4319). House surrounded by woodland.	High	Medium	Imperceptible	Negligible
4319	Stravithie House, Lodge and Gatepiers	Category C(S) Listed	353627	711269	5	2.5	Low	Forms part of small designed landscape surrounding Stravithie House (4318). Situated immediately W of public road (B9131) and surrounded by woodland.	High	Medium (localised)	Imperceptible	Negligible
4320	Stravithie House, Mill	Category C(S) Listed	353293	711136	5	2.1	Low	Forms part of small designed landscape surrounding Stravithie House (4318). Located just S of stables (4319). River side setting. Surrounded by woodland.	High	Medium (localised)	Imperceptible	Negligible
4323	Stravithie Mill Cottages	Category C(S) Listed	353467	711724	5	2.7	Low	Cottage originally associated with Stravithie Mill (4322). River setting. Immediately W of public road (B9131). Surrounded by open arable farmland.	Moderate	Low (localised)	Imperceptible	Negligible

APPENDIX 6.3: Key cultural heritage receptors between a 5 km and 10 km radius of the wind farm

Site no	Site Name	Status	Easting	Northing	No of turbines visible	Distance to nearest turbine (km)	Sensitivity of Receptor
793	Easter Pitcorthie, Standing Stone 300m W of	Scheduled Monument	349761	703979	2	5.6	High
800	Skeith Stone, 300m SW of Kilrenny Mains	Scheduled Monument	357075	704649	5	7.2	High
808	Drumcarrow Craig, Broch	Scheduled Monument	345921	713194	5	5.7	High
866	Newark Castle & Dovecot	Scheduled Monument	351837	701209	2	8.3	High
880	Peekie Bridge, Bridge over Kerly Water 50m E of Peekie Mill	Scheduled Monument	356044	712639	5	5.2	High
881	Anstruther Easter, Burgh Cross	Scheduled Monument	356654	703574	3	7.7	High
2380	Denork Craig, Fort	Scheduled Monument	345627	713701	1	6.3	High
2795	Kilconquhar, Old Parish Church	Scheduled Monument	348566	702037	3	7.8	High
5529	Coalfarm, Old Windmill, Salt pans and Associated Works, St Monans	Scheduled Monument	353354	701778	2	7.9	High
7686	Cambo, Settlement, Enclosure and Cultivation Remains 600m NNW of	Scheduled Monument	360110	712100	5	8.7	High
7687	Cambo, Ring-Ditches 250m N and 170m NNE of	Scheduled Monument	360427	711705	5	8.9	High
7689	Cambo, Unenclosed Settlement and Associated Features 370m NW of	Scheduled Monument	360132	711823	5	8.6	High
7691	Kingsbarns Castle, 700m NE of Kingsbarns	Scheduled Monument	359866	712668	2	8.6	High
8339	Drumcarrow Craig, Hut Circles	Scheduled Monument	345499	713250	5	6.1	High
10439	West Pitcorthie, Standing Stone 225m NE of	Scheduled Monument	357216	707182	5	5.9	High
90257	St Andrews Blackfriars, Dominican Friary	Scheduled Monument	350756	716532	2	7.0	High
90259	St Andrews Castle	Scheduled Monument	351240	716927	4	7.3	High
90260	St Andrews Cathedral and Adjacent Ecclesiastical Remains	Scheduled Monument	351433	716524	5	6.9	High
90263	St Andrews, West Port	Scheduled Monument	350597	716550	1	7.0	High
2503	Balcaskie House	Category A Listed	352469	703579	1	6.0	High
2506	Balcaskie House East Gatepiers and Twin Dovecots	Category A Listed	353031	703887	2	5.8	High
4329	Wormiston, Doocot	Category A Listed	361006	709603	5	9.2	High
8979	West Pitkierie Dovecot	Category A Listed	355510	705549	5	5.5	High
9000	Elie House, Convent of St Marty Reparatrice	Category A Listed	349544	700762	5	8.8	High
15817	Straththyrum House	Category A Listed	349011	717245	5	7.8	High
15844	Peekie Bridge over Kenly Water	Category A Listed	356042	712636	5	5.2	High
36005	Innergellie House	Category A Listed	357486	705098	5	7.3	High
36066	Anstruther Easter Parish Church (St Adrian's)	Category A Listed	356654	703727	5	7.6	High
36072	The Manse, Backdykes Anstruther Easter (including Garden Walls)	Category A Listed	356805	703625	5	7.8	High
36169	Scottish Fisheries Museum Trust Ltd Harbour Head and 50 East Shore Anstruther Easter	Category A Listed	356879	703483	5	8.0	High
39868	Pittenweem Parish Church	Category A Listed	354912	702601	5	7.7	High
39872	The Priory - Gatehouse	Category A Listed	354974	702602	5	7.7	High
39905	Kelly Lodge, 23 High Street	Category A Listed	354833	702557	5	7.7	High
40585	St Andrews Cathedral	Category A Listed	351415	716687	4	7.1	High
40586	St Andrews Priory	Category A Listed	351413	716619	3	7.0	High
40587	Cathedral Graveyard	Category A Listed	351459	716661	5	7.1	High
40588	St Rule's Church	Category A Listed	351475	716648	3	7.1	High
40589	Precinct Wall	Category A Listed	351437	716581	3	7.0	High
40590	The Pend	Category A Listed	351312	716642	3	7.1	High
40596	St Andrews Harbour	Category A Listed	351655	716607	1	7.0	High
40599	St Andrews Castle	Category A Listed	351260	716935	4	7.4	High

Site no	Site Name	Status	Easting	Northing	No of turbines visible	Distance to nearest turbine (km)	Sensitivity of Receptor
40600	1 South Street The Roundel, including Garden Walls	Category A Listed	351295	716675	4	7.1	High
40601	3 South Street	Category A Listed	351285	716673	4	7.1	High
40623	67, 69 South Street.	Category A Listed	351043	716661	3	7.1	High
40624	71 South Street.	Category A Listed	351031	716663	3	7.1	High
40633	Holy Trinity Church (Town Kirk), South Street	Category A Listed	350917	716665	2	7.1	High
40662	4 South Street, Queen Mary's House including Garden Walls and Grotto	Category A Listed	351266	716634	3	7.1	High
40666	St Leonard's Chapel	Category A Listed	351272	716602	3	7.0	High
40676	40 (A-H), 42 South Street, South Court.	Category A Listed	351145	716626	3	7.1	High
40686	St. Mary's College, West Range, Principal's House and Precinct, including West Boundary Wall.	Category A Listed	350972	716586	2	7.0	High
40687	University Library Original Building.	Category A Listed	351021	716588	3	7.0	High
40703	Madras College Main Building	Category A Listed	350773	716438	1	6.9	High
40723	West Port. (Southgait Port)	Category A Listed	350596	716550	1	7.0	High
40756	Dean's Court, North Street (including Walls of Courtyard and of Garden to North Street.)	Category A Listed	351290	716723	4	7.1	High
40770	71 North Street.	Category A Listed	351024	716837	3	7.3	High
40771	St. Salvator's Chapel, Tower and Hebdomadar's Building.	Category A Listed	350997	716844	3	7.3	High
40861	All Saint's Episcopal Church and Ancillary Buildings, North Castle Street.	Category A Listed	351194	716809	4	7.2	High
40868	11, 13 College Street.	Category A Listed	350961	716784	3	7.2	High
50	Wormiston House	Category B Listed	361064	709585	5	9.3	Medium
51	Cambo, Gamekeepers Lodge	Category B Listed	359889	710530	5	8.1	Medium
139	Craigtoun Park Formal Garden	Category B Listed	348213	714408	1	5.3	Medium
2505	Balcaskie House, East Lodge	Category B Listed	353023	703860	2	5.8	Medium
2664	Mount Melville Home Farm Steading	Category B Listed	348300	714452	1	5.3	Medium
2692	Drumcarro Steading	Category B Listed	345291	712904	4	6.0	Medium
2708	Grangemuir Bridge (over Dreel Burn)	Category B Listed	354291	703400	4	6.7	Medium
2709	Grangemuir House	Category B Listed	353933	704058	4	5.9	Medium
2711	Grangemuir House Former Stables and Steading	Category B Listed	353797	704114	3	5.8	Medium
4331	West Newhall Farmhouse	Category B Listed	359814	710028	5	8.0	Medium
4333	Airdrie Lodge, Gatepiers	Category B Listed	356678	707210	5	5.4	Medium
6709	Greigston House	Category B Listed	344730	711094	5	5.8	Medium
8490	Cornercroft, Main Street Kilconquhar	Category B Listed	348619	702073	3	7.7	Medium
8492	Toftstead (R L Allan) Main Street Kilconquhar	Category B Listed	348646	702075	3	7.7	Medium
8504	Kilconquhar Parish Church, Main Street	Category B Listed	348533	702029	3	7.8	Medium
8505	Kilconquhar Old Parish Church (Ruin) Main Street	Category B Listed	348564	702035	3	7.8	Medium
8507	Kilconquhar Parish Church Manse, Main Street, West End, Kilconquhar	Category B Listed	348350	702055	3	7.8	Medium
8510	Commercial Hotel Main Street, West End Kilconquhar	Category B Listed	348487	702079	3	7.7	Medium
8520	Bell House, Main Street Kilconquhar	Category B Listed	348663	702059	3	7.7	Medium
8523	Knox House (Or Cottage) Main Street, Kilconquhar	Category B Listed	348704	702072	3	7.7	Medium
8524	Laigh Cottage, Main Street, Kilconquhar	Category B Listed	348722	702071	3	7.7	Medium
8526	Woodlands Main Street, Kilconquhar	Category B Listed	348765	702062	3	7.7	Medium
8536	Jasmine Cottage Barnyards	Category B Listed	348671	702295	3	7.5	Medium
8541	The Old Schoolhouse including Garden Walls, Barnyards	Category B Listed	348578	702325	3	7.5	Medium
8544	Kilconquhar House South Entrance Gates and Lodge	Category B Listed	348858	702415	3	7.3	Medium

Site no	Site Name	Status	Easting	Northing	No of turbines visible	Distance to nearest turbine (km)	Sensitivity of Receptor
8546	Kilconquhar House Doocot	Category B Listed	349194	702889	3	6.8	Medium
8547	Kilconquhar House North Entrance Gates	Category B Listed	348797	703034	2	6.7	Medium
8549	Old Post House Main Street Kilconquhar	Category B Listed	348656	702079	3	7.7	Medium
8550	Bruce's Cottage Main Street Kilconquhar	Category B Listed	348671	702084	3	7.7	Medium
8552	Windsor Cottage Main Street, Kilconquhar	Category B Listed	348699	702092	3	7.7	Medium
8553	Rosemary Cottage Main Street Kilconquhar	Category B Listed	348710	702094	3	7.7	Medium
8554	St Margaret's Main Street, Kilconquhar	Category B Listed	348716	702095	3	7.7	Medium
8579	Kilconquhar Mill Farmhouse	Category B Listed	348206	702516	2	7.4	Medium
8580	St Ford Farmhouse	Category B Listed	348144	701254	2	8.6	Medium
8645	Gilston House North Lodge and Gates	Category B Listed	344675	707614	5	6.0	Medium
8710	Kingsbarns Parish Churchyard Sepulchral Monument to Corstorphines of Kingsbarns	Category B Listed	359315	712085	5	7.9	Medium
8712	Village Pump The Square	Category B Listed	359300	712041	5	7.9	Medium
8713	Schoolhouse The Square	Category B Listed	359332	712071	5	7.9	Medium
8715	Wellgate, The Square including Garden Walls	Category B Listed	359321	712030	5	7.9	Medium
8718	Kingsbarns Parish Church The Square and Main Street	Category B Listed	359287	712086	5	7.9	Medium
8720	The Grey House The Square including Garden Walls and Out-Buildings	Category B Listed	359391	712060	5	8.0	Medium
8721	Dunholm and Mrs Blyth's Seagate	Category B Listed	359408	712055	5	8.0	Medium
8722	House (Mr Spence) including Out-Buildings to Rear, Seagate	Category B Listed	359396	712077	5	8.0	Medium
8725	Cottages, now Out-Buildings of Cesneuk, off Main Street and Square	Category B Listed	359343	712028	5	7.9	Medium
8728	Strathyre Main Street	Category B Listed	359318	711973	5	7.9	Medium
8731	Cameron Cottage and Rosebank, Main Street	Category B Listed	359298	711937	5	7.9	Medium
8732	Parish Church Manse, off Main Street, including Garden Walls	Category B Listed	359249	711897	5	7.8	Medium
8733	Cambo Arms Hotel Main Street including Out-Buildings, Car Park Walls, and Gateway	Category B Listed	359283	712125	5	7.9	Medium
8734	Kingsbarns Farm Main Street and North Street	Category B Listed	359270	712199	5	7.9	Medium
8735	North Quarter House, Main Street, including Garden Walls	Category B Listed	359247	712123	5	7.9	Medium
8737	The Library Main Street	Category B Listed	359263	712162	5	7.9	Medium
8738	South Quarter Farmhouse	Category B Listed	359415	711929	5	8.0	Medium
8739	South Quarter Farm Steading including Farmyard Walls	Category B Listed	359393	711975	5	8.0	Medium
8740	Kingsbarns Smithy North Street	Category B Listed	359296	712154	5	7.9	Medium
8744	Briar Cottages The Wynd	Category B Listed	359391	712212	5	8.0	Medium
8745	Retreat Cottage Bell's Wynd	Category B Listed	359401	712169	5	8.0	Medium
8746	Torrie House off Station Road	Category B Listed	359220	712156	5	7.9	Medium
8747	Former Bakehouse Torrie House off Station Road	Category B Listed	359214	712142	5	7.8	Medium
8748	No 1 The Pleasance Station Road	Category B Listed	359236	712098	5	7.8	Medium
8749	No 2 The Pleasance Station Road	Category B Listed	359224	712088	5	7.8	Medium
8751	Smithy House (Incorporating Former Smithy) Station Road	Category B Listed	359190	712067	5	7.8	Medium
8752	Kippo Farmhouse	Category B Listed	357867	710423	5	6.1	Medium
8753	Kippo Doocot	Category B Listed	357772	710544	5	6.0	Medium
8754	Kippo Gatepiers	Category B Listed	357504	710958	5	5.9	Medium
8757	Cambo Farm	Category B Listed	359626	711293	4	8.0	Medium
8758	Cambo Lodges and Gates	Category B Listed	359857	710629	5	8.1	Medium
8759	Cambo House	Category B Listed	360375	711478	4	8.8	Medium

Site no	Site Name	Status	Easting	Northing	No of turbines visible	Distance to nearest turbine (km)	Sensitivity of Receptor
8760	Cesneuk The Square	Category B Listed	359330	712036	5	7.9	Medium
8761	Kingsbarns House The Square including Garden Walls and Out-Buildings	Category B Listed	359352	712056	5	7.9	Medium
8762	Westwood Cottage and Bon Accord The Square	Category B Listed	359374	712063	5	8.0	Medium
8762	Westwood Cottage and Bon Accord The Square	Category B Listed	359381	712062	5	8.0	Medium
8778	4, 6 and 8 Lady Wynd	Category B Listed	359431	712047	5	8.0	Medium
8779	Cottage, Kingsbarns Farm North Street	Category B Listed	359316	712213	5	8.0	Medium
8780	Cherry Cottage North Street	Category B Listed	359325	712217	5	8.0	Medium
8781	May Cottage North Street	Category B Listed	359331	712223	5	8.0	Medium
8782	Garage, Formerly Cottage Croft Butts House North Street	Category B Listed	359371	712244	5	8.0	Medium
8793	Cambo Dovecot	Category B Listed	360073	711268	5	8.4	Medium
8794	Cambo Mausoleum	Category B Listed	360042	711030	5	8.4	Medium
8795	East Newhall Farm	Category B Listed	360322	710731	5	8.6	Medium
8935	Gilston East Mains Farmhouse and Steading	Category B Listed	344025	707383	3	6.7	Medium
8975	Barnsmuir Farmhouse and Steading	Category B Listed	359613	706286	5	8.5	Medium
8976	Caipie Dovecot	Category B Listed	358778	705540	5	8.1	Medium
9010	Elie House, South Lodge and Gateway	Category B Listed	349529	700232	5	9.3	Medium
9012	Elie House, Dovecote	Category B Listed	349392	700806	5	8.8	Medium
9013	Elie House, Obelisk	Category B Listed	349590	700415	5	9.1	Medium
9014	Elie House, Steading and Sawmill	Category B Listed	349309	700879	5	8.7	Medium
9015	Elie House, Walled Garden	Category B Listed	349279	700816	5	8.8	Medium
9017	Grange House and Grange Cottage	Category B Listed	347753	700178	5	9.8	Medium
9868	Clatto House, Steading ('Clatto Cottage')	Category B Listed	343656	715447	4	8.9	Medium
13196	Cambo Estate, Cambo House, Bridge over Burn	Category B Listed	360424	711480	4	8.8	Medium
13198	Cambo Estate, Cambo House, Bridge over Burn	Category B Listed	360623	711592	2	9.0	Medium
13693	Kingsbarns School Main Street	Category B Listed	359273	711980	5	7.8	Medium
13694	Briar Rose and Croft Cottage North Street	Category B Listed	359423	712249	5	8.1	Medium
15495	Gilston House	Category B Listed	345007	706664	5	6.1	Medium
15502	Gilston House Boathouse	Category B Listed	344853	706669	5	6.2	Medium
15504	Gilston House Former Stable	Category B Listed	345168	706683	5	5.9	Medium
15505	Gilston House Summer House	Category B Listed	344767	706769	5	6.2	Medium
15553	Balcaskie House West Lodge and Gatepiers	Category B Listed	351172	703235	4	6.2	Medium
15815	East Lodge Craigtoun	Category B Listed	348264	715156	3	5.9	Medium
15819	Strathtyrum House, Stableblock	Category B Listed	348959	717192	5	7.7	Medium
15822	Strathtyrum, Gatepiers	Category B Listed	349393	717435	2	7.9	Medium
15834	Kingask House With Ancillary Building, Link Wall, Boundary Walls and Gatepiers	Category B Listed	354113	714520	2	5.4	Medium
15838	Boarhills Doocot	Category B Listed	356619	714324	4	6.8	Medium
15845	Peekie Inn, now Known As Peekie Mill	Category B Listed	355978	712650	5	5.2	Medium
15846	Standing Stone, Peekie	Category B Listed	355250	713351	5	5.1	Medium
19760	Strathtyrum Lodge	Category B Listed	349381	717435	2	7.9	Medium
19761	Kenly Bridge over Kenly Water and Gatepiers to Kenly Green House	Category B Listed	356952	713556	4	6.5	Medium
30922	Elie 1 and 3 Bank Street and 1 Park Place	Category B Listed	349103	700078	5	9.6	Medium
30924	Elie 7 Bank Street Rose Cottage	Category B Listed	349077	700084	5	9.6	Medium

Site no	Site Name	Status	Easting	Northing	No of turbines visible	Distance to nearest turbine (km)	Sensitivity of Receptor
30928	1-13 Golf Court, Bank Street (Excluding Modern North-West Extension)	Category B Listed	348971	700112	5	9.5	Medium
30942	7 High Street	Category B Listed	349429	700148	5	9.4	Medium
30947	21 High Street	Category B Listed	349350	700104	5	9.5	Medium
30958	Elie Parish Church High Street	Category B Listed	349156	700110	5	9.5	Medium
30959	Elie Parish Church, Gateway, Churchyard Wall, and Former Session House now Public Shelter. High Street	Category B Listed	349160	700071	5	9.6	Medium
30960	Elie Parish Churchyard Mural Monument High Street	Category B Listed	349171	700089	5	9.5	Medium
30964	Elie Rosemary 12 High Street	Category B Listed	349420	700112	5	9.5	Medium
30966	Elie 22 High Street The Lodge and Offices to Hycroft	Category B Listed	349348	700080	5	9.5	Medium
30979	Elie Marina Hotel Links Place Buildings of 1889-1911 Only Later Se Addition Excluded.	Category B Listed	348774	700102	5	9.6	Medium
30980	Elie Marionville Links Place	Category B Listed	348743	700111	5	9.6	Medium
30988	Elie 33-37 Park Place	Category B Listed	349078	700208	5	9.4	Medium
30989	Elie 39 Park Place	Category B Listed	349079	700219	5	9.4	Medium
30997	Elie Baldonie 10 Park Place	Category B Listed	349120	700175	5	9.5	Medium
30999	Elie Dunreggan House Park Place	Category B Listed	349112	700283	5	9.4	Medium
31003	9 Rankeillor Street	Category B Listed	349228	700010	5	9.6	Medium
31004	Elie Wynd Lodge, Rankeillor Street	Category B Listed	349231	700001	5	9.6	Medium
31006	Elie Wynd House, Rankeillor Street	Category B Listed	349248	700006	5	9.6	Medium
31012	Elie Sea Wynd 10 School Wynd	Category B Listed	349100	699999	5	9.6	Medium
31019	Elie 23-25 South Street	Category B Listed	349051	699991	5	9.7	Medium
31020	26 South Street	Category B Listed	349046	699994	5	9.6	Medium
31036	Elie Archibald House 1 The Terrace	Category B Listed	349334	699991	5	9.6	Medium
31042	Elie Eastfield The Toft	Category B Listed	349434	699897	5	9.7	Medium
31043	Elie Seafield Bank The Toft	Category B Listed	349448	699896	5	9.7	Medium
35975	Kilrenny Parish Church	Category B Listed	357526	704859	5	7.4	Medium
35976	Kilrenny Churchyard Lumsdaine Burial Enclosure	Category B Listed	357510	704859	5	7.4	Medium
35977	Kilrenny Churchyard-Beaton Burial Enclosure	Category B Listed	357545	704857	5	7.5	Medium
35978	Kilrenny Churchyard-Scott of Balcomie Mausoleum	Category B Listed	357501	704883	5	7.4	Medium
35979	Kilrenny Churchyard - Walls and Monuments	Category B Listed	357549	704859	5	7.5	Medium
35983	Dunglass (Mr Scott) Main Street, Kilrenny	Category B Listed	357493	704836	5	7.4	Medium
35987	Schoolhouse and Hall (Former School Main Street Kilrenny, including Garden Walls.	Category B Listed	357479	704856	5	7.4	Medium
36000	Rennyhill House (Old)	Category B Listed	357328	704876	5	7.3	Medium
36001	Rennyhill - Garden Walls Enclosing Old and New Houses and Dovecot	Category B Listed	357360	704927	5	7.3	Medium
36002	Rennyhill Dovecot	Category B Listed	357388	704964	5	7.3	Medium
36004	Rennyhill Bridge over Gellie Burn	Category B Listed	357420	704943	5	7.3	Medium
36006	Innergellie, Walled Gardens	Category B Listed	357467	705089	5	7.2	Medium
36007	Innergellie, Stables	Category B Listed	357417	705177	5	7.2	Medium
36008	Innergellie Dovecot	Category B Listed	357437	704966	5	7.3	Medium
36009	Innergellie, East Gatepiers and Lodge	Category B Listed	357821	705073	5	7.5	Medium
36067	St Adrian's Churchyard Walls and Monuments	Category B Listed	356673	703684	5	7.7	Medium
36071	The Hermitage Backdykes including Garden Walls and Outbuildings Anstruther Easter	Category B Listed	356776	703652	5	7.8	Medium
36073	The Manse Doocot, Backdykes Anstruther Easter	Category B Listed	356824	703631	5	7.8	Medium
36074	Burgh Offices and Hall, Backdykes and Ladywalk, Anstruther Easter	Category B Listed	356814	703657	5	7.8	Medium

Site no	Site Name	Status	Easting	Northing	No of turbines visible	Distance to nearest turbine (km)	Sensitivity of Receptor
36075	Johnstone Lodge Backdykes Anstruther Easter including Garden-Walls and Gate-Piers	Category B Listed	356836	703596	5	7.8	Medium
36076	Johnstone Lodge, Former Coach House and Stables of (Converted to House 1970-1) Backdykes and Haddfoot Wynd Anstruther Easter	Category B Listed	356838	703561	5	7.9	Medium
36077	1, 3, 5 High St Anstruther Easter	Category B Listed	356442	703571	3	7.6	Medium
36078	Smugglers' Inn High Street, Anstruther Easter	Category B Listed	356463	703592	3	7.6	Medium
36089	Tolbooth Wynd (East Side) High Street Anstruther Easter	Category B Listed	356605	703634	3	7.7	Medium
36093	Old Corn Mill On Dreel Burn, off High Street Anstruther Easter	Category B Listed	356383	703563	5	7.6	Medium
36109	Anstruther Town Hall	Category B Listed	356649	703662	5	7.7	Medium
36110	Town Council Burgh Depot, Garage Workshop and Store (Part Occupied J Cornfoot) Burial Brae Cunzie Street and School Green, Anstruther Easter.	Category B Listed	356624	703681	5	7.6	Medium
36111	Belmont House, Cunzie Street Anstruther Easter	Category B Listed	356624	703666	5	7.6	Medium
36113	23-25 Cunzie Street Peebles Building Anstruther Easter	Category B Listed	356660	703624	5	7.7	Medium
36114	Guthrie's House 11 Card's Wynd Anstruther Easter	Category B Listed	356720	703592	5	7.8	Medium
36137	Anstruther Harbour Anstruther Easter	Category B Listed	356831	703411	5	8.0	Medium
36138	Market Cross Shore Street Anstruther Easter	Category B Listed	356656	703572	3	7.7	Medium
36140	4 Shore Street Anstruther Easter	Category B Listed	356612	703607	3	7.7	Medium
36141	5 and 6 Shore Street Anstruther Easter	Category B Listed	356636	703602	3	7.7	Medium
36143	8 Shore Street Anstruther Easter	Category B Listed	356652	703597	3	7.7	Medium
36144	9 Shore Street and 34 Cunzie Street, Anstruther Easter	Category B Listed	356671	703590	3	7.7	Medium
36146	Masonic Arms 12 Shore Street Anstruther Easter	Category B Listed	356690	703580	3	7.8	Medium
36154	25 and 27 Shore Street Anstruther Easter (including Garden Walls of 25-27)	Category B Listed	356748	703563	5	7.8	Medium
36156	29 and 30 Shore Street Anstruther Easter (including Rear Buildings and Garden Walls).	Category B Listed	356764	703551	5	7.8	Medium
36161	41, 42, 43 and 44 Shore Street Anstruther Easter (including Rear Buildings and Garden Walls)	Category B Listed	356819	703519	5	7.9	Medium
36163	47 Shore Street (With Haddfoot Close) Anstruther Easter	Category B Listed	356834	703508	5	7.9	Medium
36164	48 Shore Street Anstruther Easter	Category B Listed	356840	703517	5	7.9	Medium
36166	Sea View (A D Wylie) Haddfoot Wynd Anstruther Easter	Category B Listed	356848	703515	5	7.9	Medium
36167	8 Haddfoot Wynd Anstruther Easter (including Garden Wall)	Category B Listed	356842	703528	5	7.9	Medium
36170	Warehouse and Workshop (Smith & Hutton) Harbour Head, Anstruther Easter	Category B Listed	356925	703480	5	8.0	Medium
36171	11 and 13 East Green, Anstruther Easter	Category B Listed	356879	703523	5	7.9	Medium
36173	19a B and C East Green Anstruther Easter	Category B Listed	356912	703519	5	7.9	Medium
36182	26 East Green Warehouse, Anstruther Easter	Category B Listed	356938	703492	5	8.0	Medium
36187	House (Mrs Henderson) Crail Road and St Andrews Road Anstruther Easter	Category B Listed	356501	703688	5	7.6	Medium
36188	Cunzie House and Outbuildings (now Garage) Crail Road, Anstruther Easter	Category B Listed	356593	703778	5	7.5	Medium
36189	Mayview, Crail Road and Ladywalk	Category B Listed	356871	703899	5	7.6	Medium
36209	43 High Street Anstruther Wester	Category B Listed	356359	703496	5	7.6	Medium
36211	Pittenweem Road Watson Place Nos 1 to 18 (Inclusive Nos)	Category B Listed	356232	703420	5	7.6	Medium
36212	Buckie Hoose, 2 High Street Anstruther Wester	Category B Listed	356412	703512	3	7.6	Medium
36214	6 High Street Anstruther Wester	Category B Listed	356397	703514	3	7.6	Medium
36215	8 High Street Anstruther Wester	Category B Listed	356385	703516	3	7.6	Medium
36216	10 and 12 High Street Anstruther Wester	Category B Listed	356377	703514	3	7.6	Medium
36217	The Dreel Tavern 14 and 16 High Street Anstruther Wester	Category B Listed	356357	703523	5	7.6	Medium
36218	18 High Street Anstruther Wester	Category B Listed	356347	703516	5	7.6	Medium
36220	28 High Street Anstruther Wester	Category B Listed	356317	703496	5	7.6	Medium

Site no	Site Name	Status	Easting	Northing	No of turbines visible	Distance to nearest turbine (km)	Sensitivity of Receptor
39870	Churchyard Walls and Gravestones	Category B Listed	354930	702618	5	7.7	Medium
39874	Parish Church Manse including Offices and Wall to Milton Place, Milton Place	Category B Listed	355133	702730	5	7.6	Medium
39882	St John's Episcopal Church, Marygate	Category B Listed	354952	702646	5	7.6	Medium
39901	11 & 13 High Street	Category B Listed	354868	702577	5	7.7	Medium
39903	17 High Street	Category B Listed	354854	702566	5	7.7	Medium
39904	19, 21 High Street	Category B Listed	354842	702564	5	7.7	Medium
39906	27 and 29 High Street	Category B Listed	354826	702549	5	7.7	Medium
39907	31-39 High Street	Category B Listed	354805	702535	5	7.7	Medium
39909	House In Brown's Close, Adjoining Old Golf Tavern, and British Legion Building At Rear.	Category B Listed	354784	702533	5	7.7	Medium
39924	6, 7 & 8 Market Place	Category B Listed	354812	702499	5	7.7	Medium
39926	40 High Street	Category B Listed	354768	702488	5	7.7	Medium
39928	44 High Street	Category B Listed	354755	702483	1	7.7	Medium
39929	46 & 48 High Street	Category B Listed	354748	702481	1	7.7	Medium
39930	50 High Street	Category B Listed	354748	702470	1	7.7	Medium
39933	54 High Street House	Category B Listed	354728	702472	1	7.7	Medium
39935	58 High Street including Garden Wall to Calman's Wynd	Category B Listed	354707	702475	1	7.7	Medium
39939	1 South Loan	Category B Listed	354757	702535	5	7.7	Medium
39940	3, 5 South Loan	Category B Listed	354753	702544	5	7.7	Medium
39942	6 South Loan	Category B Listed	354746	702510	5	7.7	Medium
40018	Henderson House, School Wynd including Garden Wall	Category B Listed	354817	702491	5	7.7	Medium
40021	House (Methvyn) School Wynd, Corner of Market Place	Category B Listed	354802	702491	5	7.7	Medium
40050	Murrayfield House James Street	Category B Listed	354903	702727	5	7.5	Medium
40051	Church of Scotland Hall including Front Wall and Gatepiers James Street	Category B Listed	354849	702710	5	7.5	Medium
40052	27 James Street including Front Area Wall	Category B Listed	354883	702672	5	7.6	Medium
40054	1 James Street and 5 Charles Street	Category B Listed	354735	702622	5	7.6	Medium
40062	26 Charles Street	Category B Listed	354638	702723	5	7.4	Medium
40063	Station Hotel Charles Street, including Front Wall and Gatepiers	Category B Listed	354582	702800	5	7.3	Medium
40064	Grangemuir Bridge over Dreel Burn	Category B Listed	354291	703400	4	6.7	Medium
40591	Well-House, Eastern Cemetery	Category B Listed	351491	716571	3	7.0	Medium
40592	New Inns, Entrance Archway (to The Hospice, Pends Road).	Category B Listed	351408	716574	3	7.0	Medium
40593	Guest Hall (Within Grounds of Bishopshall, Pends Road).	Category B Listed	351347	716579	3	7.0	Medium
40594	Abbey (Shore) Mill now Fishermen's Store, The Shore.	Category B Listed	351582	716537	1	6.9	Medium
40595	Church of The Blessed Mary of The Rock (St Mary's Kirkheugh)	Category B Listed	351564	716665	3	7.1	Medium
40597	Bellrock Tavern, (Mrs Sekaleka) Shorehead	Category B Listed	351623	716638	1	7.0	Medium
40598	Kirkheugh Cottage, Shorehead	Category B Listed	351594	716625	3	7.0	Medium
40602	5 South Street.	Category B Listed	351273	716674	4	7.1	Medium
40603	7, (9) South Street	Category B Listed	351258	716672	4	7.1	Medium
40604	11, 13 South Street.	Category B Listed	351245	716671	4	7.1	Medium
40605	15 South Street.	Category B Listed	351233	716671	4	7.1	Medium
40606	17 South Street.	Category B Listed	351225	716669	4	7.1	Medium
40607	19 South Street.	Category B Listed	351211	716667	4	7.1	Medium
40608	23, 25 South Street.	Category B Listed	351205	716667	3	7.1	Medium

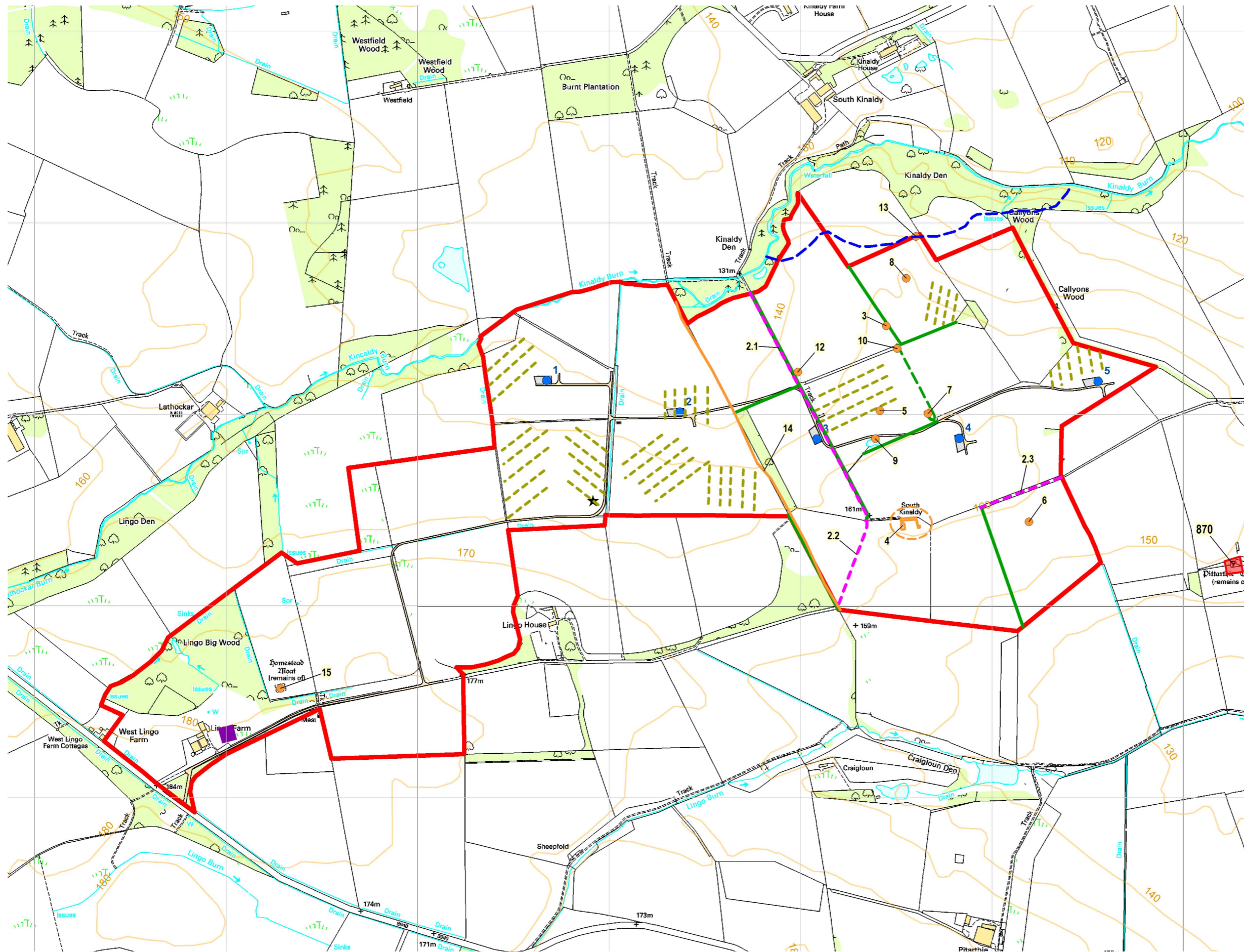
Site no	Site Name	Status	Easting	Northing	No of turbines visible	Distance to nearest turbine (km)	Sensitivity of Receptor
40613	39, 41 South Street.	Category B Listed	351134	716664	3	7.1	Medium
40614	43 South Street.	Category B Listed	351123	716663	3	7.1	Medium
40616	47 South Street.	Category B Listed	351104	716664	3	7.1	Medium
40617	49, (51) South Street	Category B Listed	351096	716666	3	7.1	Medium
40620	59, 61 South Street.	Category B Listed	351071	716660	3	7.1	Medium
40621	63 South Street.	Category B Listed	351063	716654	3	7.1	Medium
40622	65 South Street.	Category B Listed	351054	716662	3	7.1	Medium
40625	73-81 South Street.	Category B Listed	351012	716650	3	7.1	Medium
40626	83-85 South Street.	Category B Listed	351006	716668	3	7.1	Medium
40627	87-89 South Street.	Category B Listed	350999	716662	3	7.1	Medium
40628	91 South Street and 1 Crail's Lane	Category B Listed	350986	716655	3	7.1	Medium
40634	109-121 South Street Albert Buildings	Category B Listed	350875	716630	2	7.1	Medium
40639	133-139 South Street	Category B Listed	350805	716611	2	7.0	Medium
40640	141 South Street Within Burgher Close.	Category B Listed	350787	716632	2	7.1	Medium
40641	141, 143 South Street.	Category B Listed	350792	716612	2	7.0	Medium
40643	147, 149 South Street.	Category B Listed	350777	716611	2	7.0	Medium
40658	205, 207 South Street	Category B Listed	350621	716573	1	7.0	Medium
40661	2 South Street, 'Priorsgate' including Garden Walls and Outbuilding.	Category B Listed	351292	716639	3	7.1	Medium
40664	10 South Street	Category B Listed	351245	716638	3	7.1	Medium
40665	14 South Street including Garden Walls	Category B Listed	351228	716644	3	7.1	Medium
40667	St Leonard's College, Pend Arch.	Category B Listed	351285	716595	3	7.0	Medium
40668	St Leonard's College, including Garden Walls	Category B Listed	351251	716577	3	7.0	Medium
40670	St Leonard's, Oliphant Memorial Gates	Category B Listed	351348	716506	3	6.9	Medium
40671	St. Leonard's, Oliphant Memorial Dial.	Category B Listed	351426	716541	3	7.0	Medium
40672	St. Leonard's, Grant Memorial Dial.	Category B Listed	351273	716516	3	6.9	Medium
40673	24 South Street	Category B Listed	351202	716635	3	7.1	Medium
40674	34 South Street.	Category B Listed	351168	716631	3	7.1	Medium
40675	36 and 38a-E (Formerly 36-40 South Street, 'The Great Eastern').	Category B Listed	351161	716626	3	7.1	Medium
40677	44 South Street With Garden Walls of Lang Rig, including The Parts now Belonging to Greenside Cottage.	Category B Listed	351128	716621	3	7.1	Medium
40678	46 South Street, With Garden Walls of Lang Rig.	Category B Listed	351115	716618	3	7.1	Medium
40679	46 South Street, Dovecot.	Category B Listed	351125	716498	3	6.9	Medium
40680	52 South Street, With Garden Walls of Lang Rig, including Those now Belonging to Abbey Close and Red Roofs.	Category B Listed	351097	716613	3	7.0	Medium
40681	54 South Street, With Garden Walls of Lang Rig.	Category B Listed	351086	716615	3	7.1	Medium
40682	56 South Street, With Garden Walls of Lang Rig.	Category B Listed	351074	716614	3	7.1	Medium
40683	58 South Street, With Garden Wall of Lang Rig.	Category B Listed	351064	716613	3	7.1	Medium
40684	60 South Street, With Garden Walls of Lang Rig.	Category B Listed	351064	716612	3	7.1	Medium
40685	62 South Street.	Category B Listed	351043	716612	3	7.1	Medium
40688	University Library 1889-90 Extension.	Category B Listed	351027	716547	3	7.0	Medium
40689	University Library 1908 Extension.	Category B Listed	351032	716526	2	7.0	Medium
40690	Sundial, St. Mary's College.	Category B Listed	351001	716527	2	7.0	Medium
40691	Dovecot, St. Mary's College.	Category B Listed	350990	716432	2	6.9	Medium
40694	68-78 South Street.	Category B Listed	350952	716595	2	7.0	Medium

Site no	Site Name	Status	Easting	Northing	No of turbines visible	Distance to nearest turbine (km)	Sensitivity of Receptor
40695	Town Hall, South Street and Queen's Gardens	Category B Listed	350926	716582	2	7.0	Medium
40697	102-104 South Street	Category B Listed	350873	716574	2	7.0	Medium
40698	108, 110 South Street	Category B Listed	350853	716586	2	7.0	Medium
40699	112 South Street (Second House In Close)	Category B Listed	350847	716557	2	7.0	Medium
40702	Southgait Hall (Originally Royal Hotel). South Street	Category B Listed	350830	716577	2	7.0	Medium
40704	Madras College Schoolhouse East.	Category B Listed	350801	716570	2	7.0	Medium
40705	Madras College Schoolhouse West	Category B Listed	350728	716545	2	7.0	Medium
40706	Blackfriars' Chapel.	Category B Listed	350764	716565	2	7.0	Medium
40711	136 South Street (Within Close).	Category B Listed	350697	716540	1	7.0	Medium
40713	142-148 South Street, including Garden Walls.	Category B Listed	350689	716550	1	7.0	Medium
40714	1-4 Louden's Close, South Street, including Garden Walls of Lang Rig.	Category B Listed	350678	716527	1	6.9	Medium
40720	166, 168 South Street, including Garden Walls of Lang Rig.	Category B Listed	350622	716519	1	6.9	Medium
40722	172 South Street.	Category B Listed	350606	716535	1	7.0	Medium
40724	Market Place, Melville Memorial Fountain	Category B Listed	350921	716731	3	7.2	Medium
40725	3, 5 Market Street and 10 South Castle Street	Category B Listed	351175	716717	4	7.1	Medium
40727	21 Market Street.	Category B Listed	351113	716723	4	7.2	Medium
40728	23 Market Street	Category B Listed	351103	716723	4	7.2	Medium
40730	49-51 Market Street	Category B Listed	351028	716734	3	7.2	Medium
40731	53 Market Street and Shop, 1 Union Street.	Category B Listed	351025	716734	3	7.2	Medium
40733	British Linen Bank, 81 Market Street	Category B Listed	350939	716758	3	7.2	Medium
40736	8 Market Street	Category B Listed	351152	716702	3	7.1	Medium
40742	68 Market Street.	Category B Listed	350979	716707	3	7.1	Medium
40746	86-88 Market Street.	Category B Listed	350905	716706	2	7.1	Medium
40749	Bee-Boles, 93 Market Street	Category B Listed	350880	716756	3	7.2	Medium
40751	1-4 Lockhart Place, Market Street	Category B Listed	350588	716737	2	7.2	Medium
40752	Hope Park Church, Market Street	Category B Listed	350537	716741	1	7.2	Medium
40755	3 St. Mary's Place.	Category B Listed	350671	716703	2	7.1	Medium
40757	1 North Street	Category B Listed	351332	716756	4	7.2	Medium
40759	19, 21 North Street.	Category B Listed	351272	716759	4	7.2	Medium
40760	23 North Street.	Category B Listed	351255	716765	4	7.2	Medium
40765	All Saints Rectory, North Street	Category B Listed	351181	716790	4	7.2	Medium
40766	St. Salvator's Hall North Street and The Scores, including Boundary Wall to The Scores With Remains of Swallow Port At East.	Category B Listed	351130	716895	4	7.3	Medium
40767	St. Salvator's Hall Sundial, North Street and The Scores.	Category B Listed	351112	716907	4	7.3	Medium
40768	College Gate, North Street	Category B Listed	351057	716825	3	7.3	Medium
40772	United College of St Salvator and St Leonard including Boundary Walls to Butts Wynd and The Scores.	Category B Listed	350997	716851	3	7.3	Medium
40773	77 North Street Old Students' Union	Category B Listed	350950	716848	3	7.3	Medium
40774	79-83 North Street	Category B Listed	350930	716851	3	7.3	Medium
40775	Fine Arts Buildings, 89, 91, 93 North Street	Category B Listed	350889	716858	3	7.3	Medium
40776	12, 16 North Street,	Category B Listed	351237	716738	4	7.2	Medium
40777	18, 20 North Street.	Category B Listed	351227	716740	4	7.2	Medium
40780	28-32 North Street.	Category B Listed	351189	716751	4	7.2	Medium
40782	36, 36a North Street.	Category B Listed	351163	716755	4	7.2	Medium

Site no	Site Name	Status	Easting	Northing	No of turbines visible	Distance to nearest turbine (km)	Sensitivity of Receptor
40793	70 North Street.	Category B Listed	351036	716790	3	7.2	Medium
40794	72 North Street, including Garden Wall to Union Street.	Category B Listed	351029	716793	3	7.2	Medium
40795	Martyrs' Church and Halls, North Street.	Category B Listed	351000	716804	3	7.2	Medium
40796	82 North Street and 19 College Street	Category B Listed	350961	716807	3	7.2	Medium
40797	84, 86 North Street and 20-24 College Street.	Category B Listed	350943	716811	3	7.2	Medium
40799	120 North Street.	Category B Listed	350838	716831	3	7.3	Medium
40800	122, 124 North Street.	Category B Listed	350821	716840	3	7.3	Medium
40802	140-146 North Street.	Category B Listed	350753	716860	2	7.3	Medium
40806	1-8 Playfair Terrace.	Category B Listed	350618	716932	2	7.3	Medium
40807	1-4 Pilmour Place	Category B Listed	350573	716936	2	7.4	Medium
40808	5-7 Pilmour Place.	Category B Listed	350539	716942	2	7.4	Medium
40814	Edgecliffe, The Scores.	Category B Listed	351037	716991	3	7.4	Medium
40815	University House, (Principal's Residence), The Scores.	Category B Listed	350988	717008	3	7.4	Medium
40818	Bandstand, The Scores.	Category B Listed	350576	717091	2	7.5	Medium
40819	The Scores, Castlecliffe House, Garden Wall and Gatepiers	Category B Listed	351177	716975	2	7.4	Medium
40820	Royal and Ancient Golf Club House, The Scores, Golf Place	Category B Listed	350502	717090	2	7.5	Medium
40822	The Swallowgate, The Scores.	Category B Listed	350942	716956	3	7.4	Medium
40836	Dauphin Hill House, Abbey Walk and 4 Greenside Place.	Category B Listed	351196	716459	2	6.9	Medium
40838	St. Nicholas House, Abbey Walk	Category B Listed	351224	716371	1	6.8	Medium
40840	Burgh Offices, Queen's Gardens (Former Commercial Bank).	Category B Listed	350933	716555	2	7.0	Medium
40841	3 Queen's Gardens.	Category B Listed	350931	716535	2	7.0	Medium
40845	St. Andrews Episcopal Church, Queen's Terrace	Category B Listed	350873	716376	1	6.8	Medium
40846	11 South Castle Street (Joan's House).	Category B Listed	351202	716710	4	7.1	Medium
40847	13-15 South Castle Street.	Category B Listed	351201	716716	4	7.1	Medium
40855	35 - 39 North Castle Street.	Category B Listed	351246	716807	4	7.2	Medium
40856	41 North Castle Street	Category B Listed	351247	716814	4	7.2	Medium
40857	43 North Castle Street.	Category B Listed	351251	716823	4	7.2	Medium
40862	5 Union Street.	Category B Listed	351025	716748	3	7.2	Medium
40863	7 Union Street.	Category B Listed	351025	716755	3	7.2	Medium
40864	9 Union Street.	Category B Listed	351026	716765	3	7.2	Medium
40869	15 College Street.	Category B Listed	350960	716790	3	7.2	Medium
40885	County Library, Church Square, including Later East Wing.	Category B Listed	350895	716674	2	7.1	Medium
40886	Boots' Building, 1 Logie's Lane.	Category B Listed	350878	716709	3	7.1	Medium
40894	1 Greyfriars Garden and Chestney House, 149 Market Street.	Category B Listed	350727	716742	2	7.2	Medium
40895	2-10 Greyfriars Garden.	Category B Listed	350727	716796	2	7.2	Medium
40896	11 Greyfriars Garden.	Category B Listed	350725	716822	2	7.2	Medium
40897	12-16 Greyfriars Garden and 150 North Street.	Category B Listed	350730	716870	2	7.3	Medium
40898	3 Bell Street, 142/144 Market Street.	Category B Listed	350729	716712	2	7.1	Medium
40901	32, 34 Bell Street and 165, 167 South Street	Category B Listed	350723	716602	2	7.0	Medium
40902	1-14 Hope Street.	Category B Listed	350580	716830	2	7.2	Medium
40903	1-15 Howard Place.	Category B Listed	350536	716827	2	7.2	Medium
40904	1-13 Abbotsford Crescent, Abbotsford House and Macintosh Hall.	Category B Listed	350545	716905	2	7.3	Medium

Site no	Site Name	Status	Easting	Northing	No of turbines visible	Distance to nearest turbine (km)	Sensitivity of Receptor
40908	1-6 Alexandra Place, (Old Station Hotel)	Category B Listed	350576	716696	1	7.1	Medium
40933	Argyle Street, K6 Telephone Kiosk	Category B Listed	350561	716550	1	7.0	Medium
40934	North Street, K6 Telephone Kiosk	Category B Listed	351102	716810	4	7.2	Medium
40937	St Andrews War Memorial, North Street	Category B Listed	351340	716732	4	7.1	Medium
40938	90 Market Street	Category B Listed	350898	716713	3	7.1	Medium
40939	48 South Street	Category B Listed	351106	716617	3	7.1	Medium
40959	36 West End Inverie including Garages and Outbuildings	Category B Listed	352289	701510	2	8.0	Medium
40960	39 West End Burnside	Category B Listed	352274	701488	2	8.0	Medium
41006	17 Station Road including Garden Wall to Station Road	Category B Listed	352636	701729	2	7.8	Medium
41007	Parish Church Hall Station Road	Category B Listed	352596	701822	2	7.7	Medium
41014	26-30 Station Road	Category B Listed	352613	701759	2	7.8	Medium
41015	35 George Terrace including Garden Walls and Outbuilding	Category B Listed	352617	701777	2	7.8	Medium
41036	8 and 9 Virgin Square	Category B Listed	352706	701658	2	7.9	Medium
41037	10 Virgin Square	Category B Listed	352712	701659	3	7.9	Medium
41042	17 Forth Street	Category B Listed	352749	701666	3	7.9	Medium
41043	19 Forth Street	Category B Listed	352756	701669	3	7.9	Medium
41044	21 Forth Street	Category B Listed	352762	701676	3	7.9	Medium
41047	14 and 16 Forth Street and 1 and 3 Rose Street	Category B Listed	352776	701673	3	7.9	Medium
44610	112 South Street (Last House In Close), including Garden Walls	Category B Listed	350848	716546	2	7.0	Medium
46259	St Mary's Place, Inchcape House	Category B Listed	350652	716702	2	7.1	Medium
48318	North Street, University of St Andrews, Younger Hall	Category B Listed	351130	716830	4	7.3	Medium
49657	Boghall Farm, Byre	Category B Listed	358847	713812	5	8.2	Medium
49883	Cellardyke, Rodger Street, Nos 1a, 1-9 (Inclusive), 11-35 (Odd Nos), including Ancillary Buildings and Boundary Walls	Category B Listed	357181	703733	5	8.0	Medium
49884	Cellardyke, Rodger Street, Nos 10, 14-38 (Even Nos), including Boundary Walls and Ancillary Buildings	Category B Listed	357202	703761	5	8.0	Medium
49885	James Street, Pittenweem Primary School including Ancillary Structures, Gate Piers and Boundary Walls	Category B Listed	354790	702721	5	7.5	Medium
49984	Lower Strathkinness Road, Carron Lodge, Stable Block, Garden Walls, Gatepiers and Boundary Walls	Category B Listed	348413	716030	2	6.7	Medium
51110	117 North Street, The New Picture House	Category B Listed	350789	716890	2	7.3	Medium
36	Balcarres	Inventory status Garden / Designed Landscape	347939	704393	1	5.7	High
37	Balcaskie	Inventory status Garden / Designed Landscape	352402	703752	4	5.8	High
79	Cambo	Inventory status Garden / Designed Landscape	360168	711359	5	8.6	High
98	Charleton	Inventory status Garden / Designed Landscape	345950	703959	5	7.1	High
116	Craigtoun	Inventory status Garden / Designed Landscape	347832	714428	5	5.4	High
339	St Andrews Links	Inventory status Garden / Designed Landscape	349628	718428	5	8.9	High
229	Anstruther	Outstanding Conservation Area	356689	703539	5	7.8	High

Site no	Site Name	Status	Easting	Northing	No of turbines visible	Distance to nearest turbine (km)	Sensitivity of Receptor
236	Cellardyke	Outstanding Conservation Area	357449	703711	5	8.2	High
249	Elie and Earlsferry	Outstanding Conservation Area	348984	699999	5	9.7	High
253	Kilconquhar	Outstanding Conservation Area	348635	702154	3	7.6	High
254	Kilrenny	Outstanding Conservation Area	357513	704924	5	7.4	High
256	Kingsbarns	Outstanding Conservation Area	359379	712112	5	8.0	High
271	Pittenweem	Outstanding Conservation Area	354886	702533	5	7.7	High
272	St Andrews	Outstanding Conservation Area	350936	716656	3	7.1	High
274	St Monans	Outstanding Conservation Area	352577	701623	2	7.9	High
273	St Andrews - Hepburn Gardens	Conservation Area	349782	716199	1	6.6	Medium



Key:

- Wind Turbine Location
- Development Boundary
- Crane Hardstandings
- Access Track
- Substation
- Construction Compound
- Met Mast

- Cultural Heritage Site - point
- Cultural Heritage Site - line
- Cultural Heritage Site - area
- Cultural Heritage Buffer
- Cultural Heritage - Track (2)
- Cultural Heritage - Wall (11.1)
- Cultural Heritage - Bank (11.2)
- Cultural Heritage - Rig & Furrow (1) (orientation indicates direction of rigs)
- Scheduled Monument
- Approximate route of Kinaldy Mill (13) lade taken from Ainslie's map (1775)

CFA ARCHAEOLOGY LTD
 The Old Engine House
 Eskmills Park
 Musselburgh
 East Lothian, EH21 7PQ
 t: 0131 273 4380
 f: 0131 273 4381
 e: info@cfa-archaeology.co.uk
 w: www.cfa-archaeology.co.uk

Fig. No: **A 7.1** Revision:

Title:
Cultural Heritage within the Proposed Development Area

Project:
Pittarhie Wind Farm

Scale:
1:10,000 @ A3

Client:
West Coast Energy Ltd



Key:

- Turbine Location
- Scheduled Monument
- Listed Building Category A
- Listed Building Category B
- Listed Building Category C(S)
- Garden and Designed Landscape
- Conservation Area
- 10km Buffer

Turbine Visibility

- 1 Turbine Visible
- 2 Turbines Visible
- 3 Turbines Visible
- 4 Turbines Visible
- 5 Turbines Visible

CFA ARCHAEOLOGY LTD
 The Old Engine House
 Eskmills Park
 Musselburgh
 East Lothian, EH21 7PQ
 t: 0131 273 4380
 f: 0131 273 4381
 e: info@cfa-archaeology.co.uk
 w: www.cfa-archaeology.co.uk

Fig. No: 6.2 Revision:

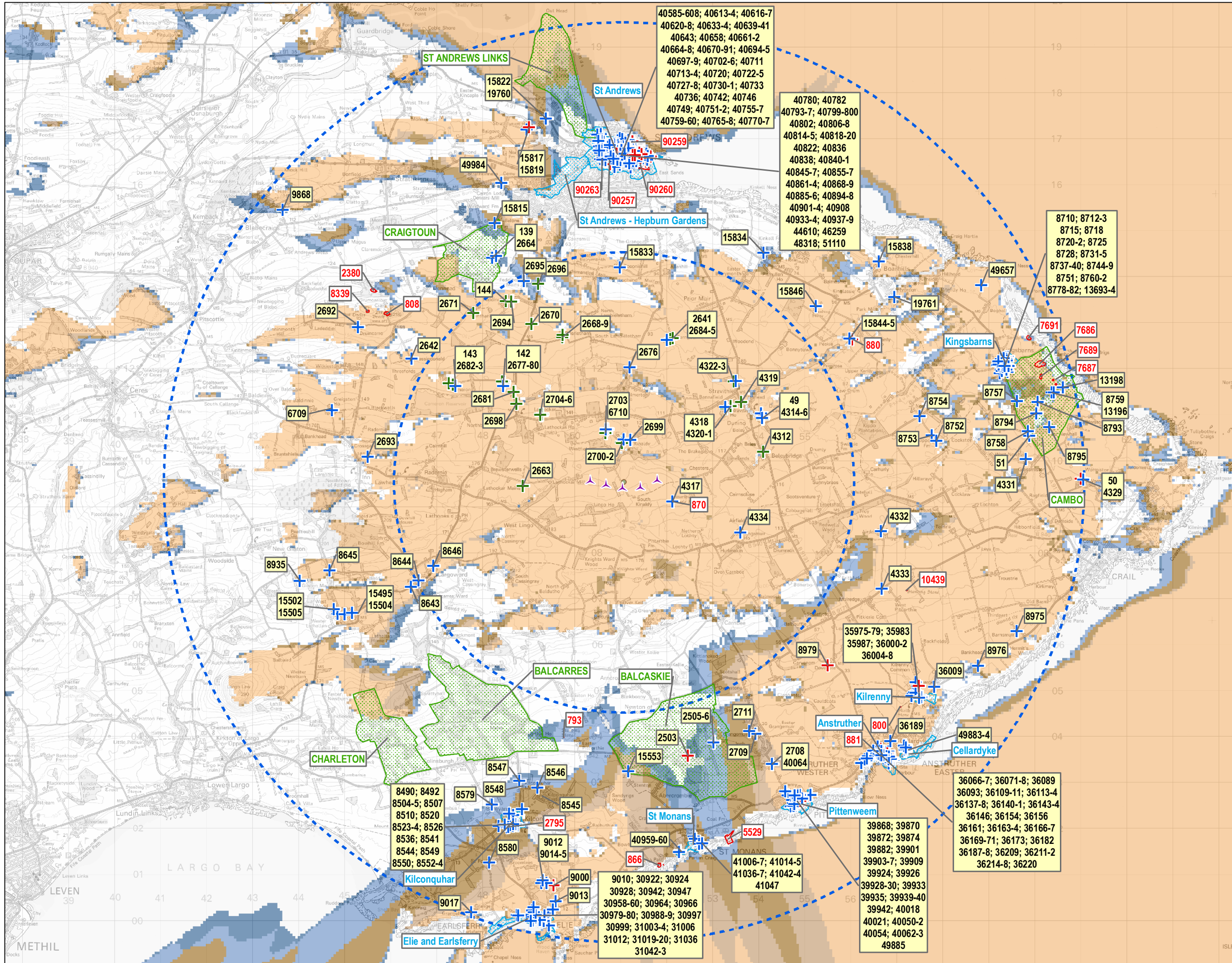
Title: Key External Receptors and ZTV

Project: Pittarthis Wind Farm

Scale: 1:75,000 A3

Client: West Coast Energy

Drawn by: SW Report No:



The copyright in this document (including its electronic form) shall remain vested in CFA Archaeology Ltd (CFA) but the Client shall have a licence to copy and use the document for the purpose for which it was provided. CFA shall not be liable for the use by any person of this document for any purpose other than that for which the same was provided by CFA. This document shall not be reproduced in whole or in part or relied upon by third parties for any use whatsoever without the express written authority of CFA.

Reproduced with the permission of Ordnance Survey on behalf of The Controller of Her Majesty's Stationery Office. © Crown copyright. CFA Archaeology Ltd, Old Engine House, Eskmills Park, Musselburgh EH21 7PQ AL100034785