

CFA Archaeology Ltd

archaeological consultants

Advice on Archaeology & Planning

Environmental Impact Assessment

Interpretation, Design & Display

Finds/ Environmental Analysis

Field Evaluation & Excavation

Historic Building Recording

Site & Landscape Survey

Geophysical Survey

Overhead Line Diversion, Moffat Substation, Moffat, Dumfries & Galloway

Archaeological Watching Brief and Excavation

Report No. 3087

CFA ARCHAEOLOGY LTD

The Old Engine House
Eskmills Business Park
Musselburgh
East Lothian
EH21 7PQ

Tel: 0131 273 4380

Fax: 0131 273 4381

email: info@cfa-archaeology.co.uk

web: www.cfa-archaeology.co.uk

Author	Rebecca Hunt MA AIfA and Melanie Johnson MA PhD FSA Scot MIfA
Illustrator	Tamlin Barton MA and Kevin Hicks BA FSA Scot
Editor	Melanie Johnson MA PhD FSA Scot MIfA
Commissioned by	Iberdrola Engineering and Construction
Date issued	December 2013
Version	0
OASIS Reference	cfaarcha1-166932
Grid Ref	NT 10111 01556

This document has been prepared in accordance with CFA Archaeology Ltd
standard operating procedures.

**Overhead Line Diversion,
Moffat Substation,
Moffat, Dumfries & Galloway**

**Archaeological Watching Brief
and Excavation**

Report No. 3087

CONTENTS

1.	Introduction	3
2.	Methodology	4
3.	Archaeological Results	5
4.	Conclusion	7
5.	References	7

Appendices

1.	Digital Photographic Register	8
2.	Context Register	11
3.	Field Drawing Register	12
4.	Sample Register	13
5.	Finds Quantification	13
6.	Discovery & Excavation in Scotland Entry	14

Illustrations (bound at rear)

Fig. 1 Location map

Fig. 2 Watching brief areas, excavation area and cultural heritage sites

Fig. 3 Plan of excavation

Fig. 4 Access track to ZV229A

Fig. 5 Pad for ZV229A

Fig. 6 Tower pad 1 ZV229

Fig. 7 Access track to ZV230B

Fig. 8 General view of excavation area at ZV230B

Fig. 9 Half-sectioned pit 025 and linear feature 011 from south

Fig. 10 Pit 048 from west

Fig. 11 Pit 029 from south-west

Fig. 12 Pit 038 from south

1. INTRODUCTION

1.1 General

A programme of archaeological works was undertaken by CFA Archaeology Ltd between February and May 2013 for the ZV Route OHL deviation required for the construction of Moffat Substation, near Beattock, Moffat, Dumfries & Galloway (Fig. 1). The work was commissioned by Iberdrola Engineering and Construction.

A WSI dated 01 August 2012 was prepared by CFA Archaeology Ltd and agreed by Jane Brann, Archaeologist for Dumfries and Galloway Council and was designed to fulfil the requirements of Dumfries and Galloway Council.

1.2 Background

The construction works entailed the erection of new pylons for the overhead line (OHL) realignment. As part of the works, temporary access roads were also constructed. A watching brief was carried out during the excavation of trial pits in February 2013 at pylon bases ZV229A, ZV230A, ZV230B, ZV229, ZV230 and ZV231.

A watching brief was subsequently carried out in April and May 2013 during all ground breaking works for access roads and pylon bases for pylons ZV229A, ZV230A, ZV230B, ZV229, ZV230 and ZV231.

An open area excavation was carried out at pylon base ZV230B following the discovery of a suite of prehistoric features during topsoil stripping.

This report contains reference numbers, which refer to gazetteer entries in the 'Cultural Heritage' chapter of the Environmental Statement (ES). This report should be read in conjunction with the ES Report.

1.3 Objectives

The objectives of the project were to conduct an appropriate programme of archaeological investigation (watching brief) during the excavation of all groundbreaking works within the area highlighted on the plan attached to the WSI. This included the construction of temporary roads and pylon bases.

2. METHODOLOGY

2.1 General

CFA follows the Institute for Archaeologists' Code of Conduct, Standards and Guidelines as appropriate. Recording of all elements was done following established CFA methods.

2.2 Watching Brief

Topsoil stripping was undertaken with a tracked mechanical excavator with a smooth-bladed ditching bucket, under constant archaeological supervision.

All excavation and on-site recording was carried out according to standard CFA procedures, principally by drawing, by photography and by completing standard CFA record forms.

The stratification of all excavated areas was recorded whether or not significant archaeological deposits were identified.

2.3 Excavation

An open area excavation was conducted following the watching brief discoveries at ZV230B, covering an area measuring approximately 8.5m by 12m. All excavation work was undertaken by hand.

All features were half-sectioned or excavated in quadrants, recorded, and the fills then fully removed. Bulk soil samples were retained from each fill and all artefacts were retained.

3. ARCHAEOLOGICAL RESULTS

A watching brief was undertaken during excavation of trial pits at ZV229A, ZV230A, ZV230B, ZV229, ZV230 and ZV231.

Subsequently a watching brief was undertaken during ground breaking works for temporary access roads, tower bases, drilling rig areas and crane pads at ZV231 and between ZV230 and ZV231; at ZV229; at ZV229A; and at and between ZV230A and ZV230B (Fig. 1).

No archaeological features or deposits were found in any of the monitored areas except for at ZV230B, and further open area excavation was conducted within this area. A site of likely prehistoric date was recorded (Fig. 2).

Topsoil within the monitored areas was generally less than 0.5m deep, and the natural substrate consisted of orange-brown, stony, sandy silt (Figs 4-7).

3.1 Excavation Results

The excavation at pylon ZV230B exposed twenty pits measuring between 0.4-2.66m across and between 0.1-0.5m deep (Fig. 3, Fig. 8, Fig. 11-12). Pits **004**, **009**, **021**, **023**, **025**, **031**, **034**, **036** and **041** may have been post-holes although no regular pattern or layout could be determined. Pit **027** may not be a pit at all, given the irregularity of the feature, but could be a spread of material within a natural depression. Pit **002** may be a temporary hearth. All features contained charcoal in varying amounts, with pit **009** containing some fire-cracked/burnt stone. A single linear feature **011** was also identified.

Details of all of the pits are provided in Appendix 2, and only those features containing artefacts are described in the text below.

A shallow oval pit (**048**) has been dated to the Neolithic period on the basis of a pottery sherd contained within it (Fig. 10). The pit measured 1.8m by 1.4m by 0.18-0.28m deep. Its fill (**016**) was a mid brown clay silt of moderate compaction with charcoal and large angular stone inclusions. Excavation revealed it to be heavily disturbed by burrowing animals.

A sub-circular pit (**036**) had near vertical sides and a flat but sloping base, measuring 0.5m by 0.45m by 0.19-0.3m deep. It was shallower at its south-east end, where its edge slightly undercut itself. Its primary fill (**041**) was 0.05-0.08m deep and consisted of a mid brown silt with charcoal flecks. There were far fewer and much smaller stones in this fill than in the upper fill (**037**). This upper fill (**037**) was a moderately loose mid brown clay silt with a large amount of charcoal, large sub-rounded and small angular stones. It was from this upper fill that a sherd of possibly Beaker pottery was found.

Sub-circular pit **025** had gently sloping sides and a concave base, measuring 0.4m by 0.45m by 0.35m deep (Fig. 9). Its fill (**026**) was a loose dark brown clay silt with large pieces of charcoal and large-medium sub-rounded, unsorted stones. Five perforated stone discs, possibly large beads or pendants, were recovered, and the pit also

contained three undiagnostic sherds of pottery and pieces of possibly vitrified fuel ash. All finds were located in the north section of the pit. The pit itself was cut by the only linear (**011**).

Linear feature **011** had steep sides and a flat base, and was orientated roughly N-S with a slight curve to the west. It measured 3.7m long, 0.25m wide and 0.15m deep becoming shallower towards the south where it petered out and could no longer be traced. Its fill (**012**) was a mid brown clay silt and contained flecks of charcoal and moderate amounts of sub-rounded stones. No finds were recovered.

3.2 Finds Assessment, by Melanie Johnson

Table 1 shows the finds quantities recovered during the watching brief. A quantification and brief catalogue by context is included in Appendix 5.

Type	No.	Wt. (g)
Vitrified	4	5
Stone	5	30
Pot	5	44
Bone	2	1
Charcoal	-	25

Table 1. Finds quantities

Vitrified Material

Four pieces of what is probably vitrified fuel ash were recovered from context **026**.

Stone

Five perforated stone discs, possibly large beads or pendants, were recovered from context **026**. The discs were flat with drilled central perforations and none of them were circular. They were made from a light brown fine-grained, soft stone.

Pottery

One sherd of prehistoric pottery was recovered from context **016** (pit **048**). This was a rim sherd, and is likely to be Neolithic in date. A further four abraded, undiagnostic body sherd was recovered from contexts **026** and **037**. One sherd from **037** appeared to be a portion of neck with an applied cordon, and may be Beaker in date.

Burnt bone

Two tiny fragments of burnt bone were recovered from context **010**.

Charcoal

Hand collected charcoal was recovered from contexts **004**, **007** and **014**, with the largest quantity coming from **014**.

4. CONCLUSION

A programme of archaeological works was undertaken by CFA Archaeology Ltd for the ZV Route OHL deviation at Moffat Substation, near Beattock.

A watching brief was undertaken during ground breaking works for temporary access roads, tower bases, drilling rig areas and crane pads at ZV231 and between ZV230 and ZV231; at ZV229; at ZV229A; and between ZV230A and ZV230B.

Only the watching brief at ZV230B uncovered archaeological remains and so further excavation was conducted within this area. Twenty pits were exposed measuring between 0.4m and 2.66m across by up to 0.5m deep, and a single linear feature **011** was also identified. Three features, **025**, **036** and **048**, contained finds of prehistoric date, including pottery and perforated stone discs. Suites of pits containing small quantities of artefacts and which do not appear to be structural in form are commonly found in the early prehistoric period, and probably both the Neolithic and Early Bronze Age periods are represented here, as indicated by the pottery. A perforated stone disc was found associated with Early Bronze Age cremations at Skilmafilly (Johnson & Cameron 2012).

A Post-excavation Research Design will be produced under separate cover in accordance with any requirements of the Dumfries & Galloway Council Archaeology Service.

The project archive, comprising all CFA record sheets, maps and reports, will be deposited with the Royal Commission on the Ancient and Historical Monuments of Scotland (RCAHMS).

A summary statement of the results of this watching brief will be submitted for publication in *Discovery and Excavation in Scotland* (Appendix 6) and an online OASIS form will be completed.

5. REFERENCES

Johnson, M and Cameron, K 2012 'An Early Bronze Age Unenclosed Cremation Cemetery and Mesolithic Pit at Skilmafilly, near Maud, Aberdeenshire.' *Scottish Archaeological Internet Reports* 53.

APPENDIX 1: Digital Photographic register

Excavation Photographs

No.	Description	Taken From	Conditions
1-8	General pre-excavation shots following site cleaning	Various	Overcast
9	SW-facing section of pit 038 (NW quad)	SW	Overcast
10	NW-facing section of pit 038 (NW quad)	NW	Overcast
11	General shot of NW- and SW-facing sections of pit 038	W	Overcast
12	Pit 029 SW-facing section	SW	Overcast
13	Pit 029 NW-facing section	NW	Overcast
14	Pit 029 NE-facing section	NW	Overcast
15	Pit 029 SE-facing section	SE	Overcast
16	Pit 029 SE- and NE-facing sections	NW	Overcast
17	Pit 029 SW- and NW-facing sections	SW	Overcast
18	Working shot of 036 plan	NE	Overcast
19	Working section of 036	NE	Overcast
20	Plan view of 036 half-sectioned	NE	Overcast
21	Section of 036	NE	Overcast
22	Section of 013	W	Overcast
23	Post-excavation plan view of 036	NE	Partly sunny
24	SE-facing section of 038 (S quad)	SE	Overcast
25	SW-facing section of pit 038 (S quad)	SW	Overcast
26	General view of SW- and SE-facing sections of pit 038 (S quad)	S	Overcast
27	Pre-exc pit 021	W	Overcast
28	Working shot of 031	S	Overcast
29	Pit 027 half-sectioned	S	Overcast
30	Post-excavation view of 031	S	Overcast
31	Post-excavation view of 031	S	Overcast
32	027 and 022 half-sectioned	W	Overcast
33	021 fully excavated	W	Overcast
34	Pit 027 S-facing section	S	Overcast
35	Post-exc plan view of 031	S	Overcast
36	Pre-exc pit 034	S	Overcast
37	Pre-exc pit 023	W	Overcast
38	023 half-sectioned, stones in situ	W	Overcast
39	034 half-sectioned	S	Overcast
40	023 fully excavated	W	Overcast
41	023 fully excavated	W	Overcast
42	019 half-sectioned	SE	Overcast
43	044 S-facing section	S	Overcast
44	046 SW-facing section	SW	Rain
45	Post-exc view of pit 025 and linear 011	S	Rain
46	NW-facing section of pit 048 (Wquad)	NW	Clear
47	Post-exc view of pit 025	S	Rain
48	SW-facing section of pit 048 (W quad)	SW	Clear
49	General view of SW- and NW-facing sections of pit 048 (W quad)	W	Clear
50	Pit 004 E-facing section	E	Clear
51	NE-facing section Pit 048 (E quad)	NE	Overcast
52	SE-facing section Pit 048 (E quad)	SE	Overcast
53	General view of pit 048 sections	E	Overcast
54	Pit 017 under excavation		Overcast
55	Pit 017 S-facing section	S	Sunny

56	Pit 017 fully excavated		Overcast
57	Pit 009 fully excavated	NE	Overcast
58	Pit 002 fully excavated	E	Partly sunny
59	Pit 025 fully excavated and linear feature 011	S	Overcast
60	Pit 025 fully excavated and linear feature 011	S	Overcast
61	Pit 013 fully excavated	W	Overcast
62	Pit 034 fully excavated	S	Overcast
63	Pit 004 fully excavated	S	Overcast
64	Pit 009 fully excavated	E	Overcast
65	Pit 046 fully excavated	NW	Overcast
66-73	General views of excavation area	Various	Overcast

Watching Brief Photographs

No.	Description	Taken From	Conditions
74	Road Access (from roadway) ZV229A	E	Sun
75	SE of Pad, no archaeology ZV229A	W	Sun
76	SE of Pad, no archaeology ZV229A	W	Sun
77	SW of Pad, no archaeology ZV229A	S	Sun
78	NE of Pad, no archaeology ZV229A	W	Sun
79	Road Access entrance, no archaeology ZV230B	WSW	O/C
80	Road Access continued, no arch. ZV230B	NNE	O/C
81	Road Access continued, no arch. ZV230B	SSW	O/C
82	Road Access continued, no arch. ZV230B	SSW	O/C
83	Potential Pit, very likely natural, ZV230B	SSW	O/C
84	Road Access continued w/ pit, ZV230B	SSW	O/C
85	Pad, ZV230B	NW	O/C
86	Pad, potential cluster of features emerging, 2 darkened pit features and 1 linear feature, in generally stony area	NE	O/C
87	Linear Feature 011, pre-ex	NE	O/C
88	Linear Feature 011, post-ex	NE	O/C
89	Pit 004, pre-ex	WNW	O/C
90	West Pad, no archaeological content	SSW	O/C
91	Pit 004, mid-ex, removal of dark upper charcoal layer	NE	O/C
92	West Pad, no archaeological content	ESE	O/C
93	Pit 006, post-ex, stone layer removed, natural exposed	NE	O/C
94	Pit 006 and Pit 009, gen. View, circular burnt features	NNE	O/C
95	Pit features 006, 009 and 013, circular burnt features, arcing left toward flag in background	NW	O/C
96	Feature 015	NE	O/C
97	Pit 004, pre-ex	NNE	Sun
98	Pit 004, mid-ex, removal of dark upper charcoal layer	NNE	Sun
99	Pit 004, post-ex	NNE	Sun
100	Pit 009, pre-ex	NNE	Sun
101	Pit 009, post-ex	NNE	Sun
102	Pit 019, pre-ex	E	Sun
103	Pit 021, pre-ex	E	Sun
104	Pit 023, pre-ex	E	Sun
105	Tower Pad 1 ZV229, no archaeological content	SSE	Sun
106	Tower Pad 2 ZV229 left side, no archaeological content	NW	Sun
107	Tower Pad 2 ZV229 right side, no archaeological content	NW	Sun
108	Pit 025, pre-ex	E	Sun
109	Pit 027, pre-ex	E	Sun
110	Feature 029, pre-ex	E	Sun
111	Pit 031, pre-ex	E	Sun

No.	Description	Taken From	Conditions
112	Road Access extension ZV229 toward tower pads	E	O/C
113	Tower Pad 1 ZV230B, no archaeological content	SE	O/C
114	Tower Pad 2 ZV230B, no archaeological content	SE	O/C
115	Tower Pad 3 ZV230B, no archaeological content	SE	O/C
116	Tower Pad 4 ZV230B, no archaeological content	SE	O/C
117	Road Access (from roadway) ZV231, no archaeological content	SE	O/C
118	Road Access ZV231 showing the farmers track (right side) and underlying topsoil (left) natural not reached	SE	O/C
119	Road Access ZV231 showing section of track and underlying topsoil	SW	O/C
120	Road Access ZV231 continued, no archaeological content	SE	O/C
121	Road Access ZV231 continued, no archaeological content	SE	O/C
122	Road Access ZV231 continued, no archaeological content	SE	O/C
123	Mile marker? Along trackway.	S	O/C
124	Road Access ZV231 continued, no archaeological content	SE	O/C
125	Southern Pad for road access to ZV230B, some stone filled field drains	N	Sun
126	Road Access ZV231 continued, no archaeological content	SE	O/C
127	General landscape shots of field leading to ZV231	N	O/C
128	General landscape shots of field leading to ZV231	NE	O/C
129	General landscape shots of field leading to ZV231	NNE	O/C
130	Road Access ZV231 continued, no archaeological content	SE	O/C
131	Northern Pad for road access ZV230B, no archaeological content	S	O/C
132	ZV230A road access, no archaeology	E	O/C
133	ZV230A road access, no archaeology	E	O/C
134	ZV230A road access, no archaeology	E	O/C
135	ZV230A road access, no archaeology	W	O/C
136	ZV230A road access, no archaeology	E	O/C
137	ZV230A road access, no archaeology	E	O/C
138	ZV230A, pad base, no archaeology	N	O/C
139	ZV230A, pad base, no archaeology	N	O/C
140	ZV230A, pad base, no archaeology	S	O/C
141	ZV230A, pad base, no archaeology	S	O/C
142	ZV230A	E	O/C
143	ZV230A	E	O/C
144	ZV230A	S	Sun
145	ZV230A	S	Sun
146	ZV229 road access	NE	Sun
147	ZV229 road access	NE	Sun
148	ZV229 road access and pad	NE	Sun
149-156	Trial pits at tower bases	Various	Sun

APPENDIX 2: Context Register

Context	Fill of	Description
001		Topsoil
002		Cut for irregular pit, 1.22m by 0.4m by 0.2m
003	002	Fill, mid brown silty clay, some animal disturbance
004		Cut for pit, 0.5m diameter by 0.2m deep
005	004	Fill, dark brown-black silty sand with abundant charcoal inclusions and large angular stones
006		Cut for pit, 0.5m diameter, abundant burning evidence
007	006	Upper fill, abundant charcoal and soil
008	006	Lower fill, fire-cracked rock and burnt natural
009		Cut for pit, 0.5m diameter by 0.2m deep
010	009	Fill, dark brown-black silty sand, some evidence of burning
011		Cut, linear feature 2m by 0.25m by 0.15m
012	011	Fill, mid brown clayey silt
013		Cut of pit, 0.40m diameter by 0.23m deep
014	013	Fill, dark brown-black silty sand, abundant charcoal
015	013	Lower fill of 013, grey-brown sandy silt, some charcoal
016	048	Fill, mid brown clayey silt, large angular stones
017		Cut for pit, 0.44m diameter by 0.2m deep
018	017	Fill, dark brown clayey silt, abundant charcoal
019		Cut of pit, 1.05m by 0.64m by 0.28m deep
020	019	Fill, dark brown-black silty sand, abundant charcoal
021		Cut for pit, 0.62m by 0.52m by 0.3m
022	021	Fill, mid brown/grey silty clay, angular stones
023		Cut of pit, 0.46m by 0.4m by 0.5m
024	023	Fill, dark grey silt, some charcoal
025		Cut of pit, 0.45m diameter by 0.35m deep. Cut by 011.
026	025	Fill, dark brown clayey silt, abundant charcoal
027		Cut of pit, 0.84m by 0.66m by 0.1m deep
028	027	Fill, mid brown clayey silt, some charcoal
029		Cut of pit, 2.22m by 2.28m by 0.5m deep
030	029	Fill, dark grey-brown clayey silt, some charcoal and angular stones
031		Cut of pit, 0.45m diameter by 0.26m deep
032		Fill, mid brown clayey silt, large angular stones
033	004	Fill, ashy light grey silt, charcoal and large angular stones
034		Cut of pit, 0.62m by 0.56m by 0.25m deep
035	034	Fill, mid grey-brown silty clay, some stones and charcoal
036		Cut of pit, 0.5m diameter by 0.3m deep
037	036	Fill, mid grey-brown silty clay, some stones and charcoal
038		Cut of pit, 2.66m by 2.06m by 0.44m deep
039	038	Fill of pit, mid brown silt
040	038	Lower fill, dark brown silt
041	036	Lower fill, mid brown silt
042		Cut of small circular pit, 0.7m by 0.94m by 0.08m deep
043	042	Fill of pit, mid brown silt
044		Cut of pit, 0.7m by 0.52m by 0.11m
045	044	Fill, mid brown clayey silt
046		Cut of pit, 1.5m by 1.16m by 0.22m
047	046	Fill, mid grey-brown silty clay, some stones and charcoal
048		Cut of pit, 1.8m by 1.4m by 0.28m
049	023	Stones in pit 023

APPENDIX 3: Field Drawing Register

Drawing No.	Sheet No.	Context/Description	Sec./Plan	Scale
1	1a	Site Plan	P	1:50
2	1b	Site Plan	P	1:50
2	2	Pit 004	P	1:10
3	2	Pit 004	S	1:10
4	2	Pit 009	P	1:10
5	2	Pit 009	S	1:10
6	2	Pit 038	S	1:10
7	2	Pit 038	S	1:20
8	2	Pit 029	S	1:20
9	2	Pit 029	S	1:20
10	2	Pit 029	P	1:20
11	2	Pit 029	S	1:20
12	2	Pit 029	S	1:20
13	3	Pit 036	S	1:10
14	3	Pit 036	P	1:20
15	3	Pit 038	S	1:20
16	3	Pits 038 and 042	S	1:20
17	3	Pit 025	S	1:10
18	3	Pit 019	S	1:20
19	3	Pit 019	P	1:20
20	3	Pit 046	P	1:20
21	3	Pit 038	P	1:20
22	4	Pit 015	S	1:10
23	4	Pit 013	P	1:20
24	4	Pit 031	S	1:10
25	4	Pit 031	P	1:20
26	4	Pit 048	S	1:20
27	4	Pit 048	S	1:20
28	4	Pit 048	S	1:20
29	4	Pit 048	S	1:20
30	4	Pit 048	P	1:40
31	6	Pit 002	S	1:20
32	6	Pit 002	P	1:20
33	6	Pit 017	P	1:20
34	6	Pit 017	S	1:20
35	5	Pit 027	P	1:20
36	5	Pit 027	S	1:20
37	5	Pit 034	S	1:10
38	5	Pit 034	P	1:20
39	5	Pit 027	P	1:20
40	5	Pit 027	S	1:10
41	5	Pit 044	P	1:20
42	5	Pit 044	S	1:20
43	5	Pit 023	P	1:20
44	5	Pit 023	S	1:20

APPENDIX 4: Sample Register

Sample No.	Context	Size	Description
1	007	1 large bag	Upper fill
2	010	1 bag, 1 bucket	Fill
3	014	1 bucket	Fill of 013
4	015	1 bucket	Fill of 013
5	037	1 bucket	Fill of 036
6	022	1 bucket	Fill of 021
7	032	1 bucket	Fill of 031
8	043	1 bucket	Fill of 042
9	039	1 bucket	Fill of 038
10	020	1 bucket	Fill of 019
11	026	2 buckets	Fill of 025
12	047	1 bucket	Fill of 046
13	028	1 bucket	Fill of 027
14	045	1 bucket	Fill of 044
15	024	1 bucket	Fill of 023
16	035	1 bucket	Fill of 034
17	016	1 bucket	Fill of 048
18	003	1 bucket	Fill of 002

APPENDIX 5: Finds Quantification

Context	Find type	No.	Wt (g)	Notes	Spotdate
004	Charcoal	-	2		Preh
007	Charcoal	-	2		Preh
010	Bone	2	1	Burnt bone	Preh
014	Charcoal	-	20		Preh
016	Pot	1	24	Rim	Preh
026	Vitrified	4	5	Possible vitrified fuel ash	Preh
026	Pot	3	14		Preh
026	Stone	5	30	Stone beads	Preh
037	Pot	1	6		Preh

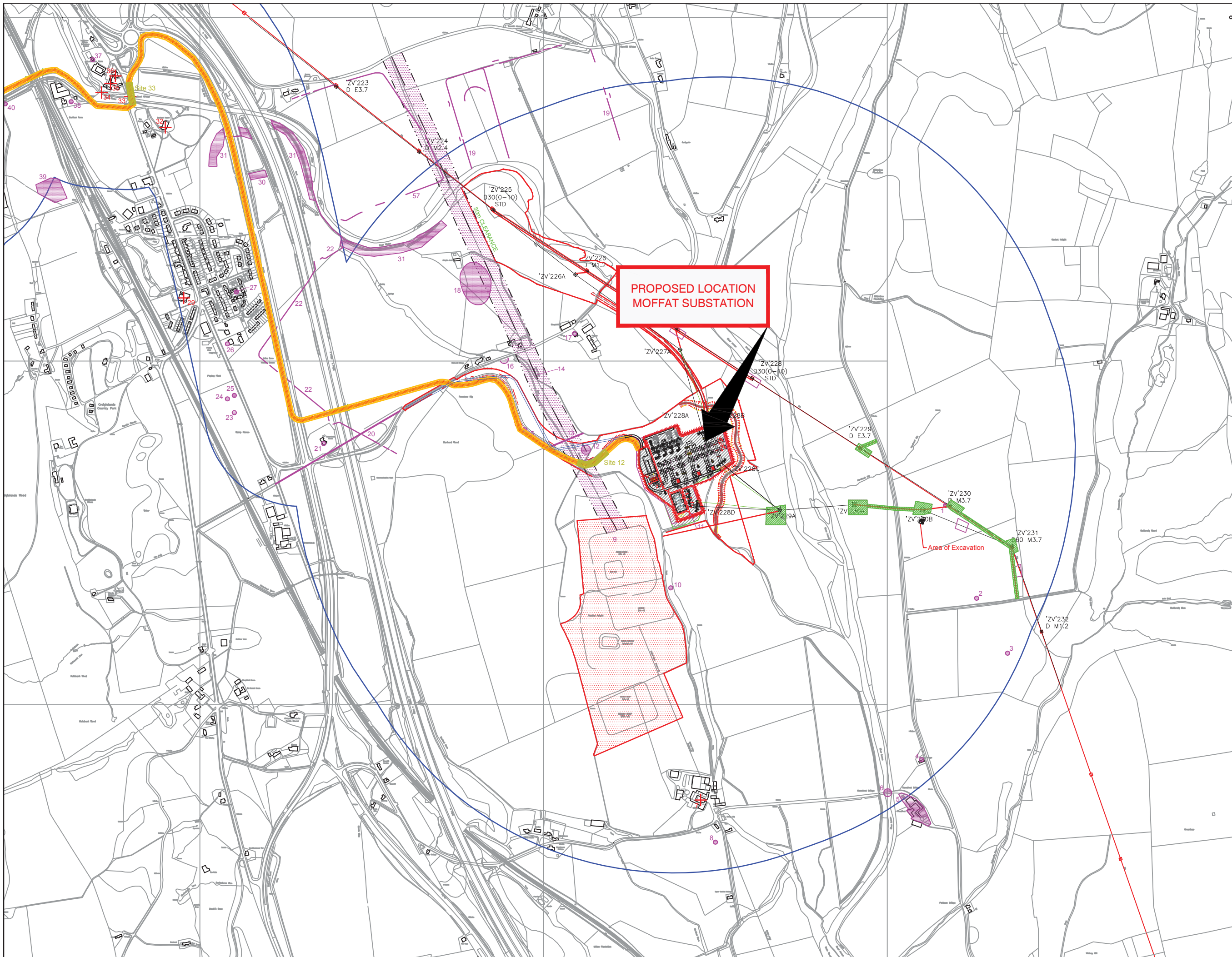
APPENDIX 6: Discovery & Excavation in Scotland Entry

LOCAL AUTHORITY:	Dumfries and Galloway Council
PROJECT TITLE/SITE NAME:	Overhead Line Diversion, Moffat Substation, Moffat, Dumfries & Galloway
PROJECT CODE:	MOFS2
PARISH:	Moffat
NAME OF CONTRIBUTOR:	Rebecca Hunt
NAME OF ORGANISATION:	CFA Archaeology Ltd
TYPE(S) OF PROJECT:	Watching Brief
NMRS NO(S):	
SITE/MONUMENT TYPE(S):	Prehistoric Pits
SIGNIFICANT FINDS:	Slag, Perforated Stone, Pottery, Charcoal.
NGR	
START DATE (this season)	
END DATE (this season)	
PREVIOUS WORK (incl. <i>DES</i> ref.)	
MAIN (NARRATIVE) DESCRIPTION: (May include information from other fields)	<p>A watching brief was undertaken during ground breaking works for temporary access roads, tower bases, drilling rig areas and crane pads at ZV231 and between ZV230 and ZV231; at ZV229; at ZV229A; and between ZV230A and ZV230B.</p> <p>Only the watching brief at ZV 230B uncovered archaeological remains and so further excavation was conducted within this area. Twenty pits were exposed measuring between 0.4-2.66m × 0.4-2.28m and 0.1-0.5m deep and a single linear 011 was also identified. Three features, 025, 036 and 048, contained significant finds. The site is thought to be prehistoric, possible Neolithic in date.</p>
PROPOSED FUTURE WORK:	
CAPTION(S) FOR ILLUSTRS:	N/A
SPONSOR OR FUNDING BODY:	Iberdrola Engineering and Construction
ADDRESS OF MAIN CONTRIBUTOR:	The Old Engine House, Eskmills Park, Musselburgh, EH21 7PQ
EMAIL ADDRESS:	cfa@cfa-archaeology.co.uk
ARCHIVE LOCATION (intended/deposited)	National Monuments Record of Scotland Scottish Borders Council Sites and Monuments Record



Key:

- PROPOSED UNDERGROUND CABLE ROUTE
- STUDY AREA BOUNDARY
- + LISTED BUILDING
- SCHEDULED ANCIENT MONUMENT
- 22 UNDESIGNATED SITE
- ARCHAEOLOGICALLY SENSITIVE AREA
- WATCHING BRIEF REQUIRED
- SITE SPECIFIC MITIGATION DESCRIBED IN WSI
- WATCHING BRIEF AREAS



CFA ARCHAEOLOGY LTD
 The Old Engine House
 Eskmills Park
 Musselburgh
 East Lothian, EH21 7PQ
 t: 0131 273 4380
 f: 0131 273 4381
 e: info@cfa-archaeology.co.uk
 w: www.cfa-archaeology.co.uk

Fig. No: 1 Revision: A

Title:
Location plan

Project:
**Overhead Line Diversion,
 Moffat Substation,
 Moffat, Dumfries & Galloway
 Archaeological Watching Brief**

Client:
Iberdrola Engineering and Construction

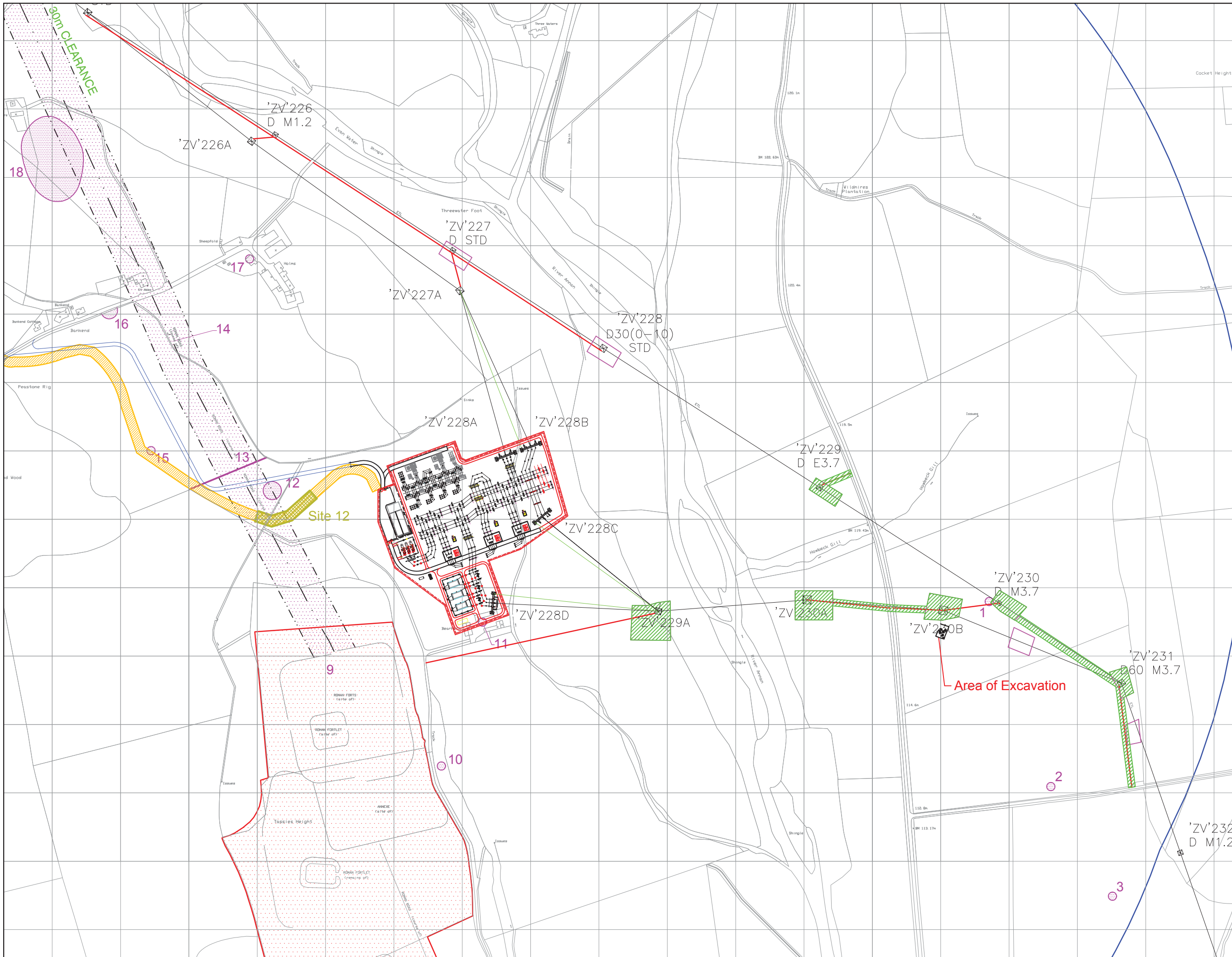
Scale at A3:
1:10,000

Drawn by: KH Checked: MJ Report No: 3087



Key:

- PROPOSED UNDERGROUND CABLE ROUTE
- STUDY AREA BOUNDARY
- + LISTED BUILDING
- SCHEDULED ANCIENT MONUMENT
- UNDESIGNATED SITE
- ARCHAEOLOGICALLY SENSITIVE AREA
- WATCHING BRIEF REQUIRED
- SITE SPECIFIC MITIGATION DESCRIBED IN WSI
- WATCHING BRIEF AREAS



CFA ARCHAEOLOGY LTD
 The Old Engine House
 Eskmills Park
 Musselburgh
 East Lothian, EH21 7PQ
 t: 0131 273 4380
 f: 0131 273 4381
 e: info@cfa-archaeology.co.uk
 w: www.cfa-archaeology.co.uk

Fig. No: **2** Revision: **A**

Title:
**Watching Brief Areas,
 excavation area and cultural
 heritage sites**

Project:
**Overhead Line Diversion,
 Moffat Substation,
 Moffat, Dumfries & Galloway
 Archaeological Watching Brief**

Client:
Iberdrola Engineering and Construction

Scale at A3:
1:5,000

Drawn by: **KH** Checked: **MJ** Report No: **3087**

The copyright in this document (including its electronic form) shall remain vested in CFA Archaeology Ltd (CFA) but the Client shall have a licence to copy and use the document for the purpose for which it was provided. CFA shall not be liable for the use by any person of this document for any purpose other than that for which the same was provided by CFA. This document shall not be reproduced in whole or in part or relied upon by third parties for any use whatsoever without the express written authority of CFA.

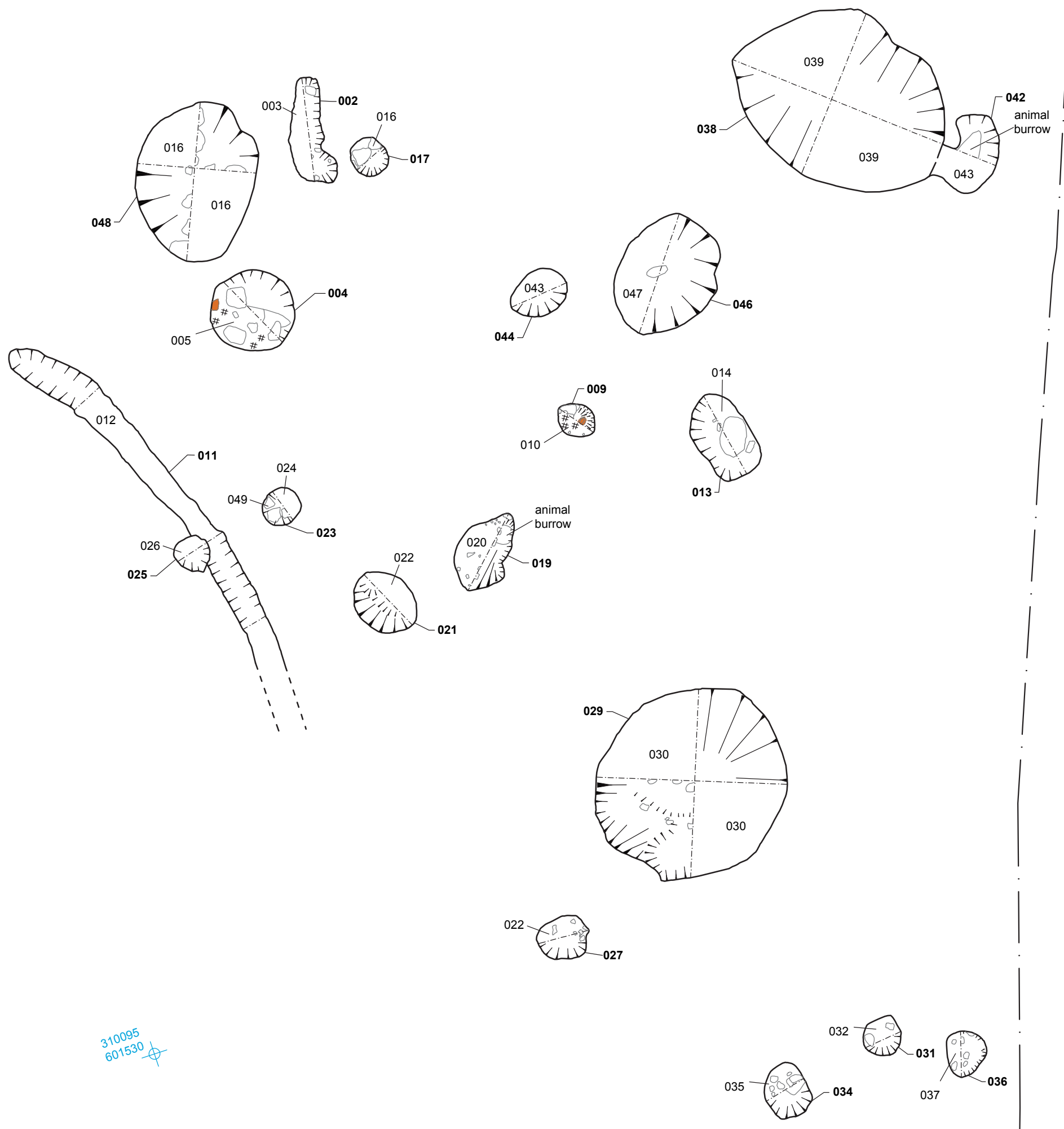
Reproduced with the permission of Ordnance Survey on behalf of The Controller of Her Majesty's Stationery Office, © Crown copyright. CFA Archaeology Ltd, Old Engine House, Eskmills Park, Musselburgh EH21 7PQ. AL100034785



Charcoal
Fire-cracked rocks



310107
601540



310095
601530

CFA
ARCHAEOLOGY LTD

CFA ARCHAEOLOGY LTD
The Old Engine House
Eskmills Park
Musselburgh
East Lothian, EH21 7PQ

t: 0131 273 4380
f: 0131 273 4381
e: info@cfa-archaeology.co.uk
w: www.cfa-archaeology.co.uk



Fig. No: 3	Revision: A	Drawn by: TB	Checked: MJ	Report No: 3087	Scale at A3: 1:50
Title: Plan of Excavation			Project: Overhead Line Diversion, Moffat Substation, Moffat, Dumfries & Galloway Archaeological Watching Brief		Client: Iberdrola Engineering and Construction
<small>The copyright in this document (including its electronic form) shall remain vested in CFA Archaeology Ltd (CFA) but the Client shall have a licence to copy and use the document for the purpose for which it was provided. CFA shall not be liable for the use by any person of this document for any purpose other than that for which the same was provided by CFA. This document shall not be reproduced in whole or in part or relied upon by third parties for any use whatsoever without the express written authority of CFA.</small>					



Fig. 4 – Access track to ZV229A



Fig. 5 – Pad for ZV229A

Fig. No: 4-5	Revision: A	Project: Overhead Line Diversion, Moffat Substation, Moffat, Dumfries & Galloway
Drawn by: KH	Checked: MJ	Report No: 3087
		Client: Iberdrola Engineering and Construction



CFA ARCHAEOLOGY LTD
The Old Engine House
Eskmills Park, Musselburgh
East Lothian, Eh21 7PQ

T: 0131 273 4380
F: 0131 273 4381

e: info@cfa-archaeology.co.uk
w: www.cfa-archaeology.co.uk

The copyright in this document (including its electronic form) shall remain vested in CFA Archaeology Ltd (CFA) but the Client shall have a licence to copy and use the document for the purpose for which it was provided. CFA shall not be liable for the use by any person of this document for any purpose other than that for which the same was provided by CFA. This document shall not be reproduced in whole or in part or relied upon by third parties for any use whatsoever without the express written authority of CFA.



Fig. 6 – Tower pad 1 ZV229



Fig. 7 – Access track to ZV230B

Fig. No: 6-7	Revision: A	Project: Overhead Line Diversion, Moffat Substation, Moffat, Dumfries & Galloway
Drawn by: KH	Checked: MJ	Client: Iberdrola Engineering and Construction
	Report No: 3087	



CFA ARCHAEOLOGY LTD
The Old Engine House
Eskmills Park, Musselburgh
East Lothian, Eh21 7PQ

T: 0131 273 4380
F: 0131 273 4381

e: info@cfa-archaeology.co.uk
w: www.cfa-archaeology.co.uk



The copyright in this document (including its electronic form) shall remain vested in CFA Archaeology Ltd (CFA) but the Client shall have a licence to copy and use the document for the purpose for which it was provided. CFA shall not be liable for the use by any person of this document for any purpose other than that for which the same was provided by CFA. This document shall not be reproduced in whole or in part or relied upon by third parties for any use whatsoever without the express written authority of CFA.



Fig. 8 – General view of excavation area at ZV230B



Fig. 9 – Half-sectioned pit 025 and linear feature 011 from the south

Fig. No: 8-9		Revision: A	Project: Overhead Line Diversion, Moffat Substation, Moffat, Dumfries & Galloway			CFA ARCHAEOLOGY LTD The Old Engine House Eskmills Park, Musselburgh East Lothian, Eh21 7PQ
Drawn by: KH	Checked: MJ	Report No: 3087	Client: Iberdrola Engineering and Construction			T: 0131 273 4380 F: 0131 273 4381 e: info@cfa-archaeology.co.uk w: www.cfa-archaeology.co.uk

The copyright in this document (including its electronic form) shall remain vested in CFA Archaeology Ltd (CFA) but the Client shall have a licence to copy and use the document for the purpose for which it was provided. CFA shall not be liable for the use by any person of this document for any purpose other than that for which the same was provided by CFA. This document shall not be reproduced in whole or in part or relied upon by third parties for any use whatsoever without the express written authority of CFA.




Fig. 10 – Pit 048 from the west




Fig. 11 – Pit 029 from the south-west

Fig. No: 10-11		Revision: A	Project: Overhead Line Diversion, Moffat Substation, Moffat, Dumfries & Galloway
Drawn by: KH	Checked: MJ	Report No: 3087	Client: Iberdrola Engineering and Construction



REGISTERED
ORGANISATION



CFA
ARCHAEOLOGY LTD



CFA ARCHAEOLOGY LTD
The Old Engine House
Eskmills Park, Musselburgh
East Lothian, Eh21 7PQ

T: 0131 273 4380
F: 0131 273 4381
e: info@cfa-archaeology.co.uk
w: www.cfa-archaeology.co.uk

The copyright in this document (including its electronic form) shall remain vested in CFA Archaeology Ltd (CFA) but the Client shall have a licence to copy and use the document for the purpose for which it was provided. CFA shall not be liable for the use by any person of this document for any purpose other than that for which the same was provided by CFA. This document shall not be reproduced in whole or in part or relied upon by third parties for any use whatsoever without the express written authority of CFA.



Fig. 12 – Pit 038 from the south

Fig. No: 12		Revision: A	Project: Overhead Line Diversion, Moffat Substation, Moffat, Dumfries & Galloway			CFA ARCHAEOLOGY LTD The Old Engine House Eskmills Park, Musselburgh East Lothian, Eh21 7PQ T: 0131 273 4380 F: 0131 273 4381 e: info@cfa-archaeology.co.uk w: www.cfa-archaeology.co.uk
Drawn by: KH	Checked: MJ	Report No: 3087	Client: Iberdrola Engineering and Construction			

The copyright in this document (including its electronic form) shall remain vested in CFA Archaeology Ltd (CFA) but the Client shall have a licence to copy and use the document for the purpose for which it was provided. CFA shall not be liable for the use by any person of this document for any purpose other than that for which the same was provided by CFA. This document shall not be reproduced in whole or in part or relied upon by third parties for any use whatsoever without the express written authority of CFA.