

CFA Archaeology Ltd

archaeological consultants

Advice on Archaeology & Planning

Environmental Impact Assessment

Interpretation, Design & Display

Finds/ Environmental Analysis

Field Evaluation & Excavation

Historic Building Recording

Site & Landscape Survey

Geophysical Survey

**Clashindarroch Wind Farm,
Huntly, Aberdeenshire**

Archaeological Mitigation Works

**Data Structure Report
No. 3117**

CFA ARCHAEOLOGY LTD

The Old Engine House
Eskmills Business Park
Musselburgh
East Lothian
EH21 7PQ

Tel: 0131 273 4380
Fax: 0131 273 4381
email: info@cfa-archaeology.co.uk
web: www.cfa-archaeology.co.uk

| | |
|------------------|-----------------------------------------------------------------------------------------|
| Authors | Tamlin Barton MA Georgia Marina Andreou Ptychion MSc Ian Suddaby MA FSA Scot MifA |
| Illustrator | Tamlin Barton MA |
| Editor | Melanie Johnson MA PhD FSA Scot MifA |
| Commissioned by | Vattenfall Wind Power Ltd |
| Date issued | March 2014 |
| Version | 0 |
| OASIS Reference | cfaarcha1-168458 |
| Planning Ref No. | APP/2009/1380 |
| Grid Ref | NJ 490 405 (NE) to NJ 417 295 (SW) |

This document has been prepared in accordance with CFA Archaeology Ltd
standard operating procedures.

**Clashindarroch Wind Farm,
Huntly, Aberdeenshire**

Archaeological Mitigation Works

**Data Structure Report
No. 3117**

CONTENTS

| | | |
|----|------------------------|----|
| 1. | Introduction | 4 |
| 2. | Working Methods | 5 |
| 3. | Archaeological Results | 6 |
| 4. | Conclusion | 9 |
| 5. | References | 10 |

Appendices

| | | |
|----|------------------------------------------|----|
| 1. | Context Register | 11 |
| 2. | Photographic Register | 12 |
| 3. | Drawings Register | 16 |
| 4. | Discovery & Excavation in Scotland Entry | 17 |

Illustrations (bound at rear)

| | |
|---------|------------------------------------------------------------------------------------------------------------------|
| Fig. 1 | Location map and site boundary |
| Fig. 2 | Plan of Haul Road, 1 of 3 |
| Fig. 3 | Plan of Haul Road, 2 of 3 |
| Fig. 4 | Plan of Haul Road, 3 of 3 |
| Fig. 5 | Plan of Windfarm |
| Fig. 6 | Site 15 fenced off next to the access track |
| Fig. 7 | View of the farmhouse at Oxter Burn (Site 2) |
| Fig. 8 | The entrance to the possible souterrain at Oxter Burn |
| Fig. 9 | General view of the new access road route looking NE from Kye Hill |
| Fig. 10 | OS Second Edition 25 inch Map extract (Aberdeenshire, Sheet 033.10) showing the settlement at Oxter Burn in 1901 |
| Fig. 11 | The new access track through cut forestry to the N of Oxter Burn |
| Fig. 12 | Section through the ditch 012 at Oxter Burn |

- Fig. 13 General view of the work at T4 from the N
- Fig. 14 Deep peat at T4
- Fig. 15 Shallow peat and surface rocks at T9
- Fig. 16 OS First Edition 25 inch Map extract (Aberdeen Sheet XXV.8) showing
Queels in 1874
- Fig. 17 OS Second Edition 25 inch Map extract (Aberdeenshire, Sheet 025.08)
showing Queels in 1901
- Fig. 18 Plan of excavations at Queels
- Fig. 19 Supervising removal of boulders recently dumped against building 007,
Queels
- Fig. 20 Shot of wall 004 prior to demolition, Queels
- Fig. 21 Possible remains of wall 006 revealed within stripped area, Queels
- Fig. 22 Cobbling 008 prior to removal
- Fig. 23 Shot of section through wall 004 from the SE

1. INTRODUCTION

1.1 General

This report presents the results of a programme of archaeological mitigation work undertaken by CFA Archaeology Ltd at Clashindarroch Wind Farm, Huntly, Aberdeenshire (NGR: NJ 490 405 (NE) to NJ 417 295 (SW), Fig. 1) between July 2013 and January 2014. The work was commissioned by Vattenfall Wind Power Ltd and managed by Natural Power Consultants Ltd.

A Written Scheme of Investigation (WSI) dated 01 August 2011 was produced by CFA on behalf of Vattenfall Wind Power Ltd. The WSI listed the mitigation work required and was designed to fulfil the requirements of the Aberdeenshire Council Archaeology Service (ACAS).

1.2 Background

Vattenfall Wind Power Ltd has been granted planning permission from Aberdeenshire Council for the construction of Clashindarroch Wind Farm. The site lies between Huntly and Cabrach, Aberdeenshire (Fig. 1). The terms of the planning consent required a programme of archaeological works. The archaeological work required by ACAS was a programme of demarcation of sites which lay in close proximity to the development, and a watching brief during all new ground breaking works close to known sites and outside of the commercial forestry.

The WSI and this report contain reference numbers, which refer to gazetteer entries in the Cultural Heritage chapter of the Clashindarroch Wind Farm Environmental Statement (ES), and this report should be read in conjunction with the ES.

1.3 Objectives

The objectives of the project were to conduct an appropriate programme of archaeological mitigation during the construction of the wind farm. This included:

- Securely fencing cultural heritage sites that were in proximity to elements of the development
- A watching brief to monitor construction operations in areas close to known sites and outside previously forested areas
- The excavation of features associated with Queels Farm prior to utility diversion works
- To provide a report on these mitigation works.

2. WORKING METHODS

2.1 General

CFA follows the Institute for Archaeologists' Standards and Guidance and Code of Conduct.

2.2 Site Fencing / Demarcation

The routes of the access roads and turbine base locations were walked over by CFA staff with the aim of identifying cultural heritage sites requiring demarcation. Known cultural heritage sites which were specifically visited included Sites 2, 3, 10, 15, 21, 24, 25, 29, 30, 46, 65, 67, 90, 92, 116, 131. These were demarcated and fenced-off, to protect them during the wind farm construction period, only where they were in close proximity to construction activities (less than 20m away) and then only if there was a possibility that they would not naturally be avoided by construction activities.

The erection of clearly identifiable fencing was carried out by the contractors under the direct supervision of CFA staff. Sites were fenced-off with a minimum 5m exclusion zone where possible. The fencing was erected to a standard commensurate with the need for it to remain in place for the duration of the construction works.

2.3 Watching Brief

All access roads and turbine bases in the watching brief areas were excavated by a tracked excavator under constant archaeological supervision. In addition, monitoring was undertaken at Site 2 due to its proximity to construction activities.

On the open moorland to the north of T4 and to the south of T3, the access road was floated over the peat and a watching brief was not required.

Excavation was undertaken with a tracked mechanical excavator fitted with a smooth-bladed ditching bucket, under constant archaeological supervision. All discoveries, including soil profiles and subsoil characteristics, were recorded using standard CFA recording forms and digital photography.

2.4 Excavation

Following agreement with ACAS, an excavation was undertaken at Site 30 (Queels farmstead) to allow the re-routing of utility services, required as a consequence of the construction of the substation platform.

Overburden was removed by a 360° tracked excavator equipped with a toothless ditching bucket under constant archaeological supervision. This revealed either the natural subsoil surface or the surface of the first significant archaeological horizon. All further excavation necessary was carried out by hand.

All hand excavation and on-site recording was carried out according to standard CFA procedures, using pro forma record sheets and digital photography. Sections and plans were produced at an appropriate scale.

3. ARCHAEOLOGICAL RESULTS

3.1 General

The layout of the development and the locations of the archaeological mitigation works are shown in Figs. 2-5.

Numbers in bold in the following text refer to contexts, a full list of which is contained in Appendix 1.

3.2 Site Fencing / Demarcation

The WSI anticipated that Sites 2, 3, 10, 15, 21, 24, 25, 29, 30, 46, 65, 67, 90, 92, 116, 131 may need to be fenced. These sites were visited by CFA's project archaeologist once the road alignments were finalised and prior to construction, in order to determine the need for fencing. In general, fencing was done where the site was <20m from elements of the development and where it would not naturally be avoided by machinery or other vehicles.

Sites 2, 15, 24 and 30 were fenced with appropriate buffer zones (Fig. 6-8). The buffer at Site 2 was reduced, in agreement with ACAS.

The remaining sites were not fenced as they were: a farmhouse currently in use (25); sites located in dense forestry that would not be affected by the development (3, 21, 46, 65, 67); not located (10, 29, 131); or were located more than 20m away from elements of the development (90, 92, 116).

3.3 Watching Brief

A watching brief took place during groundbreaking works for the construction of new access roads and turbine bases outside of previously forested areas. These areas are shown in purple on Figs. 2-5. The exception to this was where a new access road passed to the north-west of Site 2, a farmhouse and associated structures to the east of the Oxter Burn (Figs. 7-8).

Monitored access roads included the main site access road (Fig. 2) from the A920 to the start of the forested area just north of Kye Hill (Fig. 9). This area also took in the site compound and parking area. This access road crossed improved fields to the east and south of the Collonach Burn. No archaeological remains were recorded.

The Oxter Burn settlement was part of Corrydown Township and the OS Second Edition map of 1901 (Fig. 10) shows various farm buildings and other agricultural infrastructure including a pond and sluice ('SI' on the map). The surviving elements of the site were surveyed by GPS and a route for the new road agreed. This aimed to avoid all parts of the site with the exception of a ditch leading east from the pond. Although the area had been badly affected by commercial forestry (Fig. 11), the ditch (or possible mill lead) from the pond was located during the watching brief and a section through this feature (**012**) is shown in Fig. 12.

The area between just north of T4 and just south of T3 was monitored (Fig. 5). Elsewhere in this area of open moorland, the access road was floated over the peat and the boundary between the dug and floated parts of the road is clearly visible in Fig. 13. Where the road was excavated, this area contained peat with a depth of between 1.5m and 2.5m (Fig. 14). No archaeological remains were recorded.

The area from midway between T5 and T8, to T9 was monitored (Fig. 5). This area contained shallow peat with a depth of <0.5m, numerous erratic boulders (Fig. 15) and shattered bedrock. No archaeological remains were recorded.

3.4 Queels Excavation

A programme of excavation took place at the former farmstead of Queels in advance of a water pipe diversion to the south of the substation (Fig. 2).

Queels (Site 30) is shown in detail on Ordnance Survey maps from 1874 and 1901 (Figs. 16-17) and the route of the new water pipe has been added to these maps. Numbers in bold and parentheses below refer to contexts further described in Appendix 1.

The site survived as the upstanding remains of two rectangular buildings and a rectangular enclosure (Fig. 18), along with a dump of boulders from more recent activity.

The site was surveyed using a total station to identify a route through the farmstead that would cause the least damage to the surviving remains. This identified a possible route through two existing gaps in the walls of an enclosure north of the main rectangular building. This route also avoided a further building at the west end of the settlement (**007**). Installation of the new pipe required a 3.5-5m wide working corridor along the chosen route and this was stripped of turf and topsoil under archaeological supervision using a tracked excavator equipped with a toothless ditching bucket. The resulting plan is shown in Fig. 18. During the stripping it was realised that the angle of the route was too steep near the east gap in the enclosure wall, so it became necessary to demolish a 3m long segment of the wall (**004**, Fig. 19).

Stripping of the corridor revealed that a modern dump of field clearance boulders had been positioned against the south wall of building (**007**, Fig. 20). These were very large and must have been dumped by a tractor. Further east at the gap in wall (**006**), the possible remains of foundations were exposed (Fig. 21) suggesting that there had not always been a gap here. Similarly, the stripping of topsoil at the gap in wall (**004**) also exposed corresponding wall foundations. It seems likely that both gaps were created by modern farm machinery crossing the site and demolishing the walls.

Removal of the 3m long segment of wall (**004**) revealed that it had been constructed from field stones with a turf and soil core; 19th century pottery was found at its base. To the east lay a cobbled surface (**008**, Fig. 22) which extended to the east for 5m before ending in a line of kerb stones. Abutting this kerb and extending 6m to the NW was an organic silty-clay layer (**009**) containing 19th century rubbish. Both layers lay on natural (**003**).

Once the corridor had been fully stripped to natural, both the north and south ends of exposed walls **004** (Fig. 23) and **006** were fenced off as were the remains of building **007** in order to prevent accidental damage during water pipe installation.

The recorded remains at Queels correspond well to the structures shown on the 1st and 2nd edition OS maps of 1874 and 1901 (Figs 16 and 17). Structure **007** to the west is shown on both maps as a rectangular building (roofed in 1874, unroofed in 1901) with two square compartments, perhaps storage or cart sheds, on its south end. The surviving remains surveyed correspond to the southernmost of these compartments; the northern one and the rest of the building apparently having been demolished by forestry activity. Walls **004** and **006** appear to fit best with a rectangular enclosure on the 1901 map which replaced a smaller one shown in 1874. Cobbled layer **008** appears to have been a yard surface within the NE part of this enclosure and midden layer **009** corresponds well to a rectangular enclosure, possibly an animal pen, shown on the 1901 map. The building to the south is shown as roofed on both the 1874 and 1901 maps,

A possible building platform, previously noted on the north side of the excavation area within the felled forestry plantation and recorded by the Forestry Commission as 'the stone foundations of a building measuring approx 14m by 5m' (FCS SMR no. BIN039), has been buried beneath spoil. The spoil will be carefully removed in the future.

4. CONCLUSION

The programme of archaeological mitigation work at Clashindarroch Wind Farm, Huntly has been successfully completed. This included the identification and protection of existing sites through fencing-off; a watching brief during construction works; and an excavation at Site 30 where avoidance could not be achieved.

Three sites (15, 28 and 30) were fenced off and remained unaffected by the works.

One site (2) was surveyed and demarcated, and only a shallow ditch was affected by a new access road.

One site (30) was surveyed and a route chosen to minimise the impact of a utility service diversion, which was subsequently excavated. This revealed no significant archaeological remains. The remainder of the site was demarcated.

No significant archaeological features or artefacts were identified during the watching brief.

CFA recommend that no further work is required in mitigation and that this report along with the *OASIS* and *Discovery and Excavation in Scotland* entries will be sufficient to disseminate the results of the project.

A summary statement of the results of this work along with the results of the evaluation will be submitted for publication in *Discovery and Excavation in Scotland* (Appendix 4).

The project archive, comprising all CFA record sheets, maps and reports, will be deposited with the RCAHMS and copies of reports will be lodged with the Aberdeenshire Council Sites and Monuments Record.

5. REFERENCES

Ordnance Survey 1st Edition 1874, *Aberdeenshire*, twenty five inches to one mile, Sheet XXV.8 (Huntly).

Ordnance Survey 2nd Edition 1901, *Aberdeenshire*, twenty five inches to one mile, Sheet 025.08 (Huntly).

Ordnance Survey 2nd Edition 1901, *Aberdeenshire*, twenty five inches to one mile, Sheet 033.10 (Huntly).

APPENDIX 1: Context Register

| Context No. | Description |
|-------------|-----------------------------------------------------------------------------------------------------------------------------------------------------------------------------------------------------------------------------------------------------------------------------------------------------------------------------------------------------------------------------------------------------------------------------------------------------------------------------------------------------------------|
| 001 | Topsoil at Queels – mid-brown clayey silt, contains white and blue glazed ceramic (19 th century), animal bone and glass. Finds were not recovered. |
| 002 | Subsoil – A light greyish-brown mica-rich silt |
| 003 | Natural deposits at Queels – ginger to grey-brown mixed silts, sands and clays with frequent angular stones and boulders up to 0.4m x 0.2m dia. |
| 004 | E wall of former enclosure at Queels. Measures 1.4-1.2m wide (excluding tumble) and 0.65m high (max). Structure built from loosely placed angular fieldstones measuring on average 0.4m x 0.3m x 0.15m. Once extended to the S and joined the main rectangular building at Queels, but a gap has been created by recent farming activities. Excavation around the gap revealed the foundations of this wall. Wall abuts cobble layer 008. |
| 005 | Possible foundation cut for wall 004 revealed when excavating existing gap in wall. Foundation boulders for the wall appear to be sunk slightly into a trench. Linear and very shallow (<10cm). |
| 006 | W wall of enclosure at Queels. Stripping of the working corridor through an existing gap revealed possible foundation stones for this wall. The stone layer comprises a single layer of medium to small angular and tabular stones placed on top of natural deposits. Overall the stone deposit measured 3.5m in long and 0.8m wide. Nothing survived in section. |
| 007 | A rectangular building to the W of wall 006 at Queels. The structure was not excavated, though the stripped corridor for the new water pipe abutted it to the S. A dump of large field boulders lay against the S wall of the building and this was carefully removed. The structure is rectangular measuring 6.6m x 5.7m; walls were 0.78m wide and 2 courses high (0.6m). There is a possible internal dividing wall at the N end and the main E and W walls possibly continue to the N beyond this division. |
| 008 | A layer of sub-angular to angular stones randomly laid to the E of wall 004, abutting it in places. The layer comprises small stones, occasional bricks and pieces of unidentifiable iron. Stones vary in size from 0.15m x 0.09m to 0.42m x 0.3m. At the E end the cobbles have been positioned to form a kerb. The cobbled surface lies above natural deposits and abuts midden layer 009 to the E. Finds were not recovered. |
| 009 | A dark grey-black loamy clayey silt spread containing occasional small stones. Layer lies to the E of cobbled surface 008 and contains frequent white glazed ceramic pottery fragments, coal, lumps of iron, fragments of ceramic field drain and glass. The deposit is 0.1-0.2m thick, abuts cobbled surface 008 and lies above natural deposit 003. Finds were not recovered. |
| 010 | A layer of mixed clay and topsoil in the core of wall 004 with occasional smaller stones mixed in. Layer lies above natural deposit 003 and contains blue-glazed 19 th century ceramic at base. Finds were not recovered. |
| 011 | A layer of tumble from wall 004 on its E side. Contains rubble from the wall and clays from the wall core. |
| 012 | Cut for linear ditch at Oxter Burn |
| 013 | Brownish-grey mottled silt, sand and angular stones in ditch 012 |

APPENDIX 2: Photographic Register

| Number | Description | From | Conditions |
|--------|--------------------------------------|------|------------|
| 1 | Entrance access track to forest area | W | Sunny |
| 2 | Access track | E | Sunny |
| 3 | General shot looking NE | SW | Sunny |
| 4 | Lime kilns, site 24 looking NE | S | Sunny |
| 5 | Lime kilns, site 24 looking NE | NE | Sunny |
| 6 | Access track looking SW | NE | Sunny |
| 7 | Access track looking SW | SW | Sunny |
| 8 | General shot looking E | W | Sunny |
| 9 | General shot looking N | S | Sunny |
| 10 | General shot looking NW | SE | Sunny |
| 11 | General shot looking S | N | Sunny |
| 12 | Access track looking N | S | Sunny |
| 13 | Access track looking S | N | Sunny |
| 14 | Access track up to site 46 | SE | Sunny |
| 15 | Access track up to site 46 | NW | Sunny |
| 16 | Farmer's track | N | Sunny |
| 17 | Farmer's track | N | Sunny |
| 18 | Detail of machine marks | N | Sunny |
| 19 | Detail of machine marks | N | Sunny |
| 20 | Farmer's track | N | Sunny |
| 21 | Farmer's track | S | Sunny |
| 22 | Field boundary site 15 | | Sunny |
| 23 | Field boundary site 15 | | Sunny |
| 24 | Forest track site 15 | | Sunny |
| 25 | Forest track site 15 | | Sunny |
| 26 | Forest track site 15 | | Sunny |
| 27 | Forest track site 15 | | Sunny |
| 28 | Forest track site 15 | | Sunny |
| 29 | Access track CH4100-CH1700 | S | Sunny |
| 30 | Access track CH4100-CH1700 | N | Sunny |
| 31 | Access track CH4100-CH1700 | | Sunny |
| 32 | Topsoil stripping - access track | S | Sunny |
| 33 | Access track | N | Sunny |
| 34 | Access track | W | Sunny |
| 35 | Area site 3 | | Sunny |
| 36 | Area site 3 | | Sunny |
| 37 | Area site 3 | | Sunny |
| 38 | Area site 3 | | Sunny |
| 39 | Area site 3 | | Sunny |
| 40 | Site 3 "Corshalloch" | | Sunny |
| 41 | Site 3 "Corshalloch" | | Sunny |
| 42 | Site 3 "Corshalloch" | | Sunny |
| 43 | Site 3 "Corshalloch" | | Sunny |
| 44 | Site 3 "Corshalloch" | | Sunny |
| 46 | Area site 67 | | Sunny |
| 47 | Area site 67 | | Sunny |
| 48 | Area site 67 | | Sunny |
| 49 | Area site 67 | | Sunny |
| 50 | Area site 21 | | Sunny |
| 51 | Area site 21 | | Sunny |
| 52 | Area site 2 | | Sunny |
| 53 | Area site 2 | | Sunny |
| 54 | Area site 2 | | Sunny |
| 55 | Area site 2 | | Sunny |

| Number | Description | From | Conditions |
|--------|---------------------------------------------------------------------------------------------------|------|------------|
| 56 | Machines working on trackway (5/9/13) | NNE | Good |
| 57 | Access track development (5/9/13 14:00) | S | Good |
| 58 | Ditch digging across the trackway | E | Good |
| 59 | Ditch digging across the trackway | W | Good |
| 60 | Earthworks, land scraping, track expansion | N | Good |
| 61 | Track and ditch | S | Good |
| 62 | Earthworks across the track | SW | Good |
| 63 | Earthworks across the track (CH4500) | NE | Clear |
| 64 | Ditch excavation across the track - progress shot | SW | Clear |
| 65 | Earthworks - progress shot | SW | Clear |
| 66 | Trackway levelling | NW | Cloudy |
| 67 | Trackway stripping - progress shot although bog was not stripped (6/9/13) | NE | Cloudy |
| 68 | Trackway stripping - progress shot although bog was not stripped (6/9/13) | NE | Cloudy |
| 69 | Stone concentration just N of CH2700 | W | Rainy |
| 70 | Stone concentration just N of CH2700 | W | Rainy |
| 71 | Close-up to machine cut | W | Rainy |
| 72 | Trackway stripping - progress shot (9/9/13) | SSE | Clear |
| 73 | Site 116 area - related to lime kiln | WNW | Clear |
| 74 | Site 116 area - related to lime kiln | WNW | Clear |
| 75 | Site 116 area - related to lime kiln | WNW | Clear |
| 76 | Trackway stripping and extension of existing track - progress shots | SSE | Clear |
| 77 | Trackway stripping and extension of existing track - progress shots | SSE | Clear |
| 78 | Almost imperceptible round feature in the area of site 116. Kiln remains? | WNW | Clear |
| 79 | Site 116 area - fenced (10/9/13) | SE | Rainy |
| 80 | Site 116 area - fenced (10/9/13) | W | Rainy |
| 81 | Final part of trackway stripping in area around 116 | S | Rainy |
| 82 | Existing track extension a few metres S of the end of the new trackway | N | Rainy |
| 83 | The remains of site 46, which is partly covered by forestry and located within a modern farm area | E | Rainy |
| 84 | General area of site 10. The site, however, is not visible | E | Rainy |
| 85 | General area of site 10. The site, however, is not visible | E | Rainy |
| 86 | General area of site 10. The site, however, is not visible | E | Rainy |
| 87 | Fencing site 15 - enclosure dyke, curving into a side track | WNW | Rainy |
| 88 | Fencing site 15 - enclosure dyke, curving into a side track | S | Rainy |
| 89 | Fencing site 15 - enclosure dyke, curving into a side track | N | Rainy |
| 90 | Site 116 fenced | SW | Fair/misty |
| 91 | Within 116 | S | Fair/misty |
| 92 | Lime kiln identified - site 116 | SE | Fair/misty |
| 93 | Lime kiln identified - site 116 | SW | Fair/misty |
| 94 | Lime kiln identified - site 116 | W | Fair/misty |
| 95 | Lime kiln (centre) from further down slope | W | Fair/misty |
| 96 | Lime kiln slightly up slope | SW | Fair/misty |
| 97 | Earthworks between track and 116 | E | Fair/misty |
| 98 | Earthworks at edge forest, possibly associated with site 21, centred on NGR | S | Fair/misty |
| 99 | Earthworks at edge forest, possibly associated with site 21, centred on NGR | NE | Fair/misty |
| 100 | Area S of site 21, possible association | SE | Fair/misty |
| 101 | Water channels S of 21 track - associated with 21? or water management for access track | NW | Fair/misty |
| 102 | Water channels S of 21 track - associated with 21? or | NE | Fair/misty |

| Number | Description | From | Conditions |
|--------|-----------------------------------------------------------------------------------------|------|-------------|
| | water management for access track | | |
| 103 | Site 2 - Underground structure and house | NE | Cloudy/good |
| 104 | Site 2 - Underground structure | N | Cloudy/good |
| 105 | Site 2 - Bank of dry pond within forest | SE | Cloudy/good |
| 106 | Site 2 - Dry pond within forest | SSE | Cloudy/good |
| 107 | Site 2 - Dry pond within forest | NNE | Cloudy/good |
| 108 | Site 2 - Hollow and house/building | NNE | Cloudy/good |
| 109 | Site 2 - Hollow | S | Cloudy/good |
| 110 | Site 2 - Building | S | Cloudy/good |
| 111 | Site 2 - Building | SW | Cloudy/good |
| 112 | Site 131 - 'Grouse butt' | NE | Cloudy/good |
| 113 | Site 131 - 'Grouse butt' (see felled trees mark buffer boundary) | S | Cloudy/good |
| 114 | Site 131 - 'Grouse butt' (see felled trees mark buffer boundary) | N | Cloudy/good |
| 115 | Beginning of stripping spur 5A | W | Cloudy |
| 116 | Existing trackway adjacent to spur 5A | NNW | Cloudy |
| 117 | Exposure of subsoil - bright orange | SSE | Cloudy |
| 118 | Thick topsoil at beginning of spur 5A | SSE | Cloudy |
| 119 | Progress shot (15/10/13 15:00) | SW | Cloudy |
| 120 | Progress shot (16/10/13) | SW | Foggy |
| 121 | Thinner topsoil as elevation rises | SE | Foggy |
| 122 | Ca. 50cm topsoil on top of hill | W | Foggy |
| 123 | Picture showing stripped area | S | Foggy |
| 124 | Thicker topsoil as digging progresses to the E | W | Foggy |
| 125 | Progress shot | W | Foggy |
| 126 | Progress shot | SW | Foggy |
| 127 | Progress shot - arrival of 2nd machine (17/10/13) | SW | Rain |
| 128 | Beginning of stripping 50m to the NE of machine 1 | E | Rain |
| 129 | Beginning of stripping 50m to the NE of machine 1 (note how much deeper the topsoil is) | N | Rain |
| 130 | Progress shot | W | Rain |
| 131 | Topsoil depth just W of WT408 | W | Rain |
| 132 | Topsoil depth just E of WT408 - in the background is machine of previous photo | E | Rain |
| 133 | Progress shot | W | Rain |
| 134 | Progress shot | E | Rain |
| 135 | Test pits E of WT408 | E | Rain |
| 136 | 50m E of WT408 topsoil depth, we had to stop | E | Rain |
| 137 | 50m E of WT408 topsoil depth, we had to stop | NE | Rain |
| 138 | Some sort of service E of WT408. RR McLeod are aware of it | E | Rain |
| 139 | Progress shot showing topsoil variation | W | Rain |
| 140 | Progress shot showing topsoil variation | W | Rain |
| 141 | Progress shot showing subsoil variation | W | Rain |
| 142 | Progress shot showing subsoil variation | W | Rain |
| 143 | Ca. 70m of WT408 subsoil gets very gravelly | W | Rain |
| 144 | Close-up of previous photo showing larger gravel | W | Rain |
| 145 | Progress shot (18/10/13) | W | Rain |
| 146 | Progress shot E of photo 145 (18/10/13) | W | Rain |
| 147 | Progress shot showing subsoil | W | Rain |
| 148 | Progress shot - flooding | W | Rain |
| 149 | Progress shot - very gravelly subsoil | W | Rain |
| 150 | Progress shot - sandier subsoil 50m W | W | Rain |
| 151 | Progress shot | W | Rain |
| 152 | Progress shot - 2nd machine progressing towards WT409 | W | Rain |
| 153 | Another sort of service in trackway - could not move it | W | Rain |

| Number | Description | From | Conditions |
|--------|-------------------------------------------------------------------------------------------------------------------------------|------|-------------|
| 154 | Excavated ca.80m of track towards WT09 | W | Cloudy/good |
| 155 | Excavated ca.80m of track towards WT09 | SE | Cloudy/good |
| 156 | Further on toward WT09 | SW | Cloudy/good |
| 157 | Further on toward WT09 - with glacial erratics in track | NE | Cloudy/good |
| 158 | Further on toward WT09 - with glacial erratics in track | NW | Cloudy/good |
| 159 | Modern test pit (spoil visible on unexcavated area) | SW | Cloudy/good |
| 160 | End spur 5A (complete) | E | Cloudy/good |
| 161 | E area of hardstanding for WT09 - glacier boulders | NE | Cloudy/good |
| 162 | NE area of hardstanding for WT09 - glacier boulders | E | Cloudy/good |
| 163 | NW area of hardstanding for WT09 - glacier boulders | NW | Cloudy/good |
| 164 | SE area of hardstanding for WT09 - glacier boulders | WSW | Cloudy/good |
| 165 | Pre-ex WT08 hardstanding | NE | Cloudy/good |
| 166 | Eastern 1/3 of WT08 hardstanding | NW | Cloudy/good |
| 167 | Middle 1/3 of WT08 hardstanding | S | Cloudy/good |
| 168 | Western 1/3 of WT08 hardstanding (natural drainage visible) | SSE | Cloudy/good |
| 169 | Turbine base WT09 | NE | Cloudy/good |
| 170 | Turbine base WT08 | NW | Cloudy/good |
| 171 | Site 2 fenced off (from existing road) | SE | Ok/Sunny |
| 172 | Site 2 fenced off (from existing road) | N | Ok/Sunny |
| 173 | NW area of fenced off area | SE | Good/Sunny |
| 174 | Road corridor through site 2 | NE | Ok/Sunny |
| 175 | Road corridor through site 2 | SW | Ok/Sunny |
| 176 | Pond' fenced off | E | Ok/Sunny |
| 177 | Pond' fenced off | SE | Ok/Sunny |
| 178 | General shot of 10m widening of spur 5A, W of WT09 | W | Ok/Sunny |
| 179 | General shot of 10m widening of spur 5A, E of WT09 | E | Ok/Sunny |
| 180 | General shot of 10m widening of spur 5A, E of WT09 | S | Ok/Sunny |
| 181 | General shot of 10m widening of spur 5A, E of WT09 | E | Ok/Sunny |
| 182 | General shot of 10m widening of spur 5A, E of WT09 | W | Ok/Sunny |
| 183 | Site 2 sunset | NE | Poor/Sunset |
| 184 | NW facing section of [012] | NW | Ok/Cloudy |
| 185 | Site 2 including [012] | SW | Ok/Cloudy |
| 186 | Site 2 including [012] | SW | Ok/Cloudy |
| 187-8 | General view of T4 and the surrounding area. The change from floating access road to excavated access road is clearly visible | N | Overcast |
| 189 | General view of the peat section at T4 | N | Overcast |
| 190 | Working shot, T4 | W | Overcast |
| 191 | Working shot, T3 | S | Sunny |
| 192 | Working shot, T3 | S | Sunny |
| 193 | Working shot, T3 | W | Overcast |
| 194 | Working shot, T3 | W | Overcast |
| 195 | Beginning of stripping near 004 | NW | Clear |
| 196 | Beginning of stripping near 004 | NW | Clear |
| 197 | Beginning of stripping near 004 | NE | Clear |
| 198 | Stripping turf near 004 | E | Clear |
| 199 | Moving stones piled up against 007 | W | Clear |
| 200 | Moving stones piled up against 007 (recent field activity) | NW | Clear |
| 201 | Moving stones piled up against 007 (recent field activity) | NW | Clear |
| 202 | Area next to 007 de-turfed | S | Clear |
| 203 | Stripping working corridor by 007 down to natural | NW | Clear |
| 204 | General shot of Plum and Sycamore trees at Queels | SW | Clear |
| 205 | Shot showing working corridor stripped of turf at SW end | NE | Good |
| 206 | Shot showing organic deposit 009 | SW | Good |
| 207 | Wall 004 foundation stones revealed in gap | S | Good |
| 208 | Wall 004 foundation stones revealed in gap | S | Good |

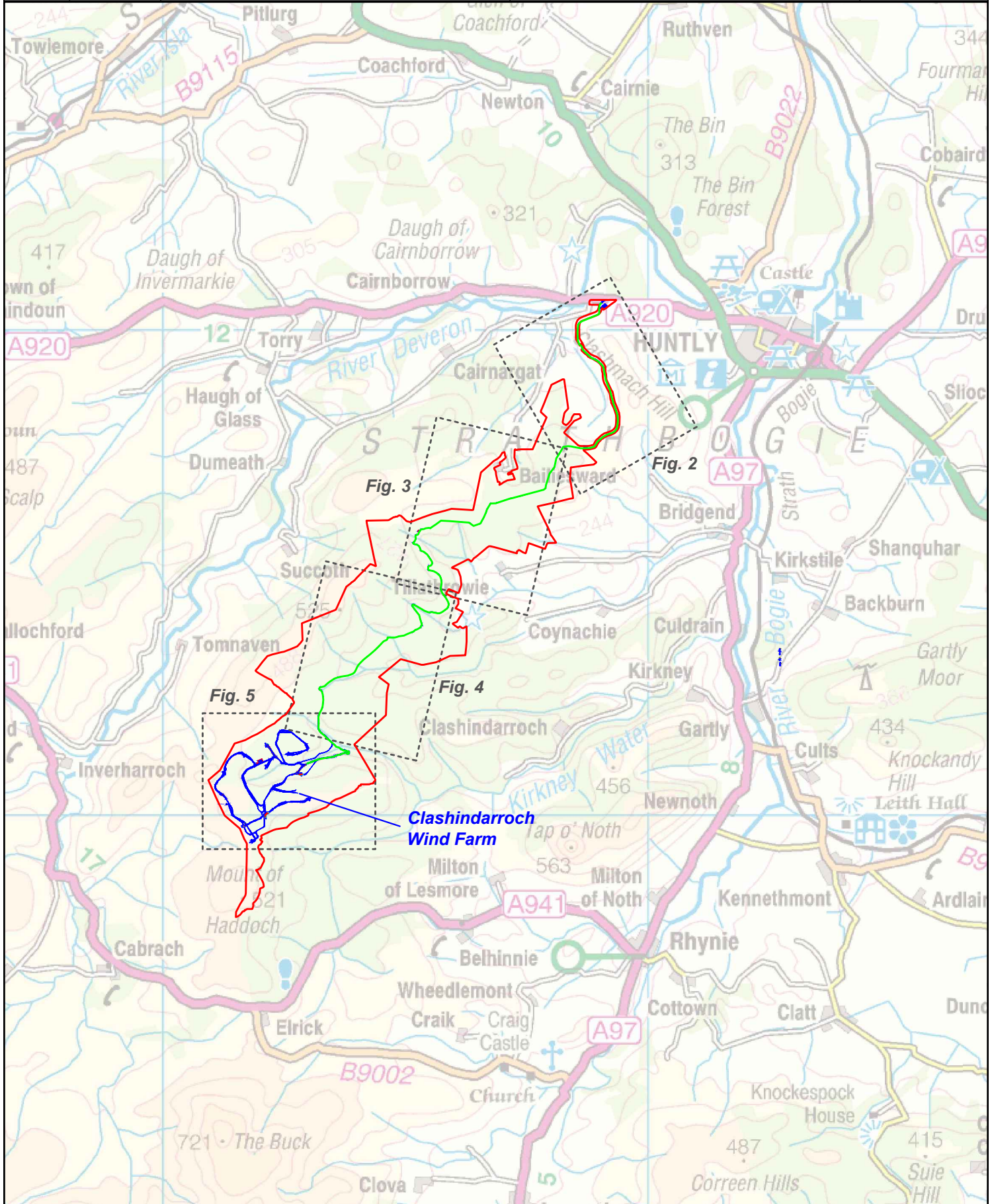
| Number | Description | From | Conditions |
|---------|------------------------------------------------------------------|-------|------------|
| 209 | Possible foundations of wall 006 revealed in gap | S | Good |
| 210-11 | Possible foundations of wall 006 revealed in gap | N | Good |
| 212-13 | Segment of wall 004 to be demolished | S | Good |
| 214-15 | Segment of wall 004 to be demolished | SW-W | Good |
| 216-17 | Segment of wall 004 to be demolished | E | Good |
| 218-21 | Segment of wall 004 to be demolished | N | Good |
| 222 | Cobbled surface 008 | SW | Good |
| 223 | Cobbled surface 008 | NE | Good |
| 224-5 | Cobbled surface 008 | N | Good |
| 226 | General shot of excavation | W | Good |
| 227 | Excavating through 004 | W | Good |
| 228 | Excavating through cobbles 008 | W | Good |
| 229 | Cleaning back section near 006 (wall was not visible in section) | E | Good |
| 230 | Stripping down to natural deposits, NE end of Queels | SW | Good |
| 231-240 | Sequence of shots looking along stripped working corridor | W, SW | Good |
| 241-4 | Section revealed through 004 | S | Good |
| 245-6 | Section revealed cobbles 008 | N | Good |
| 247 | Shot of structure 007 fenced off | S | Good |
| 248 | General shot of fenced off features at Queels | SW | Good |
| 249 | Wall 004 fenced off | SW | Good |

APPENDIX 3: Drawings Register

| Dwg No. | Sheet No. | Scale | Plan / Section | Description/contexts |
|---------|-----------|-------|----------------|-----------------------------------------------|
| 1 | 1 | 01:20 | Plan | Plan of 004, 30/7/13, prior to demolition |
| 2 | 1 | 01:20 | Plan | Plan of possible part of 004 to the S |
| 3 | 1 | 01:20 | Plan | Plan of 006, 30/7/13 after exposed by machine |
| 4 | 2 | 01:10 | Section | N facing section of 008 |
| 5 | 3 | 01:20 | Section | S facing section of 004 |

APPENDIX 4: Discovery and Excavation in Scotland Entry

| | |
|-------------------------------------------------------------------------------------|-----------------------------------------------------------------------------------------------------------------------------------------------------------------------------------------------------------------------------------------------------------------------------------------------------------------------------------------------------------------------------------------------------------------------------------------------------------------------------------------------------------------------------------------------------------------------------------------------------------------------------------------------------------------------------------------------------------------------------|
| LOCAL AUTHORITY: | Aberdeenshire |
| PROJECT TITLE/SITE NAME: | Clashindarroch Windfarm |
| PROJECT CODE: | VACL2 |
| PARISHES: | Fyvie, Gartly, Glass, Huntly, Rhynie |
| NAME OF CONTRIBUTOR: | Ian Suddaby |
| NAME OF ORGANISATION: | CFA Archaeology Ltd |
| TYPE(S) OF PROJECT: | Mitigation works |
| NMRS NO(S): | NJ44SE 24 (Queels), NJ43SW 20 (Oxter / Corrydown) |
| SITE/MONUMENT TYPE(S): | Farmsteads |
| SIGNIFICANT FINDS: | None |
| NGR (2 letters, 6 figures) | NJ 440 331 (centre) |
| START DATE (this season) | July 2013 |
| END DATE (this season) | January 2014 |
| PREVIOUS WORK (incl. DES ref.) | None |
| MAIN (NARRATIVE) DESCRIPTION: (May include information from other fields) | Agreed Mitigation measures were undertaken during the construction phase of Clashindarroch Windfarm to the south-west of Huntly, Aberdeenshire. These included the fencing-off of known sites, a watching brief during the construction of access roads outside of previously forested areas and as small excavation in advance of utility diversion works. No new sites were found during the watching brief but a ditch or possible mill-lead was recorded at Corrydown (NJ43SW 20). An excavation took place at Queels (NJ44SE 24) in advance of utility service diversions and this recorded walls, surfaces and deposits associated with the farmstead, all of which appeared to date to the 19 th century. |
| PROPOSED FUTURE WORK: | None |
| CAPTION(S) FOR ILLUSTRS: | None |
| SPONSOR OR FUNDING BODY: | Vattenfall Wind Power Ltd |
| ADDRESS OF MAIN CONTRIBUTOR: | CFA Archaeology Ltd, Old Engine House, Eskmills Park, Musselburgh, EH21 7PQ. |
| EMAIL ADDRESS: | cfa@cfa-archaeology.co.uk |
| ARCHIVE LOCATION (intended/deposited) | Archive to be deposited in RCAHMS, Reports lodged with Aberdeenshire SMR and RCAHMS |



Key:



Site Boundary



Haul Road

Scale at A4:

1:10,000

Fig No: 1

Revision: A

Client: Vattenfall Wind Power Ltd

Title:

Location map and site boundary

Project:

Clashindarroch Windfarm, Huntly, Aberdeenshire



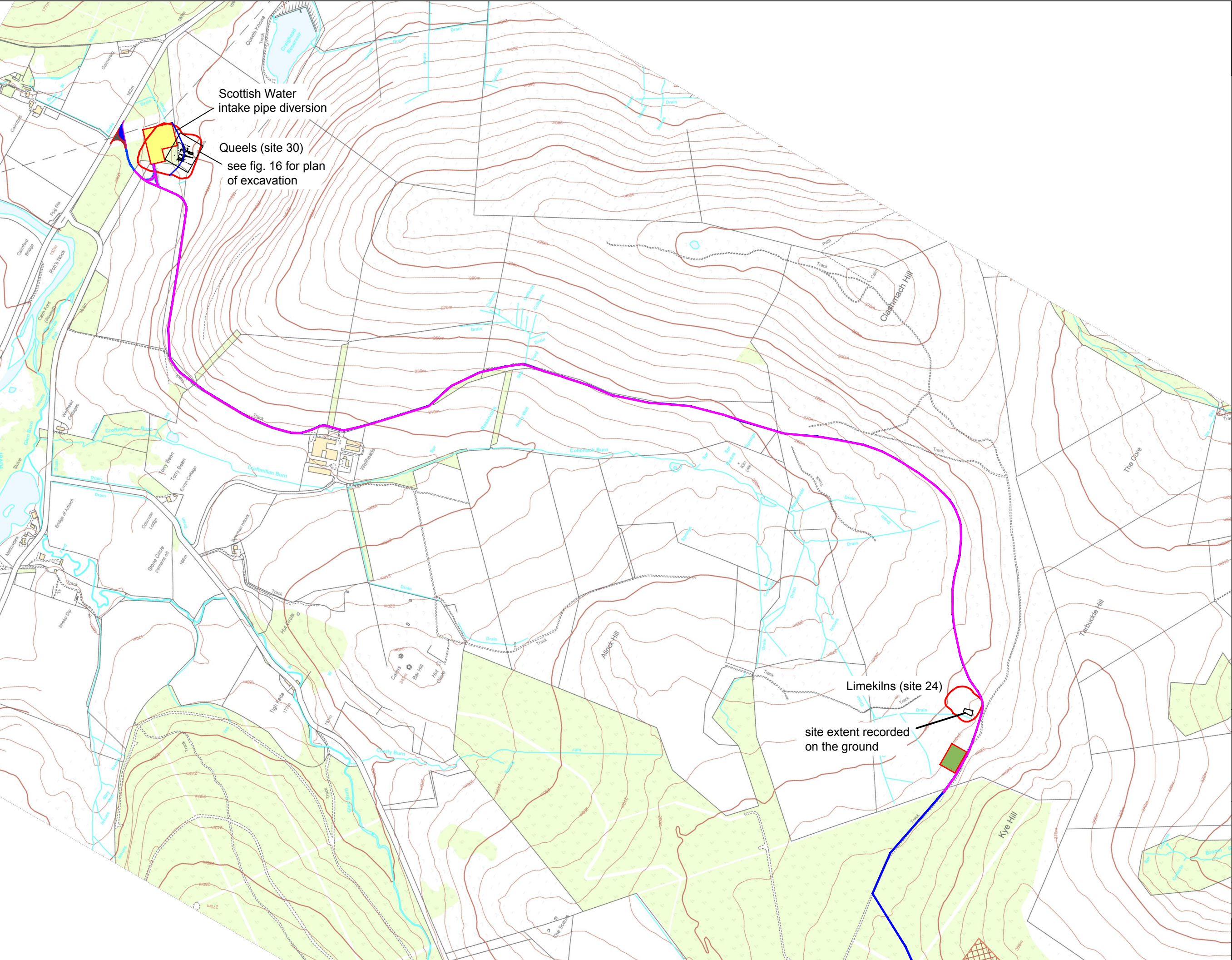
CFA ARCHAEOLOGY LTD
The Old Engine House
Eskmills Park
Musselburgh
East Lothian, EH21 7PQ

t: 0131 273 4380
f: 0131 273 4381
e: info@cfa-archaeology.co.uk
w: www.cfa-archaeology.co.uk

Drawn by: TB

Checked: IS

Report No: 3117



Scottish Water
intake pipe diversion

Queels (site 30)
see fig. 16 for plan
of excavation

Limekilns (site 24)

site extent recorded
on the ground



- Key:
- Fenced Sites
 - Proposed Site Compound
 - Proposed Substation Compound
 - Original Access Track Layout
 - Watching Brief Areas
 - Proposed Borrow Pits

CFA
ARCHAEOLOGY LTD

CFA ARCHAEOLOGY LTD
The Old Engine House
Eskmills Park
Musselburgh
East Lothian, EH21 7PQ
t: 0131 273 4380
f: 0131 273 4381
e: info@cfa-archaeology.co.uk
w: www.cfa-archaeology.co.uk

Fig. No: 2 Revision: A

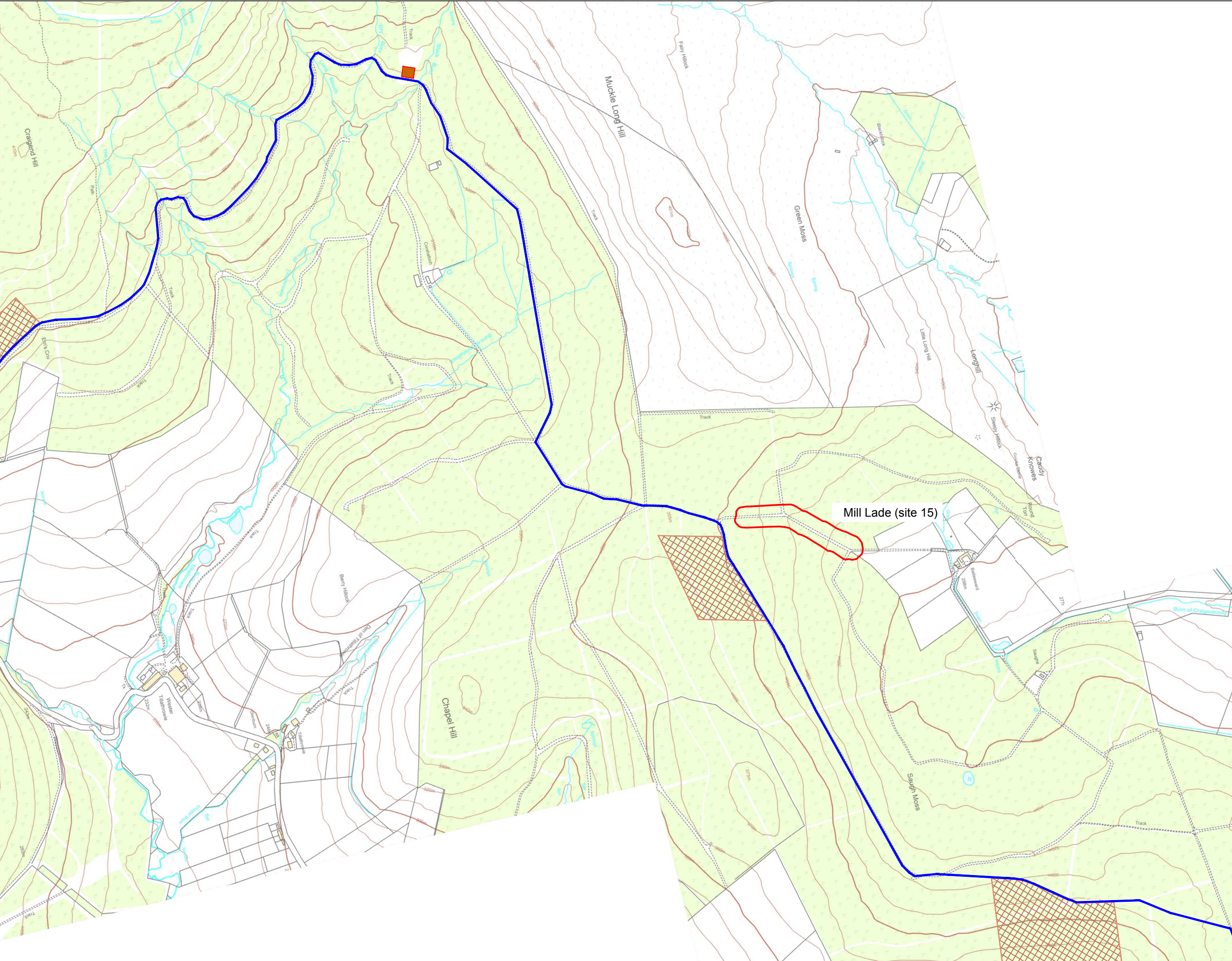
Title:
Plan of Haul Road, 1 of 3

Project:
Clashindarroch Windfarm,
Huntly, Aberdeenshire

Client:
Vattenfall Wind Power Ltd

Scale at A3:
1:10,000





- Key:
- Fenced Sites
 - Proposed Control Building Location
 - Original Access Track Layout
 - Proposed Borrow Pits

CFA ARCHAEOLOGY LTD
The Old Engine House
Eskmills Park
Musselburgh
East Lothian, EH21 7PQ
t: 0131 273 4380
f: 0131 273 4381
e: info@cfa-archaeology.co.uk
w: www.cfa-archaeology.co.uk

| | | | |
|----------|---|-----------|---|
| Fig. No: | 3 | Revision: | A |
|----------|---|-----------|---|

Title:
Plan of Haul Road, 2 of 3

Project:
**Clashindarroch Windfarm,
Huntly, Aberdeenshire**

Client:
Vattenfall Wind Power Ltd

Scale at A3:
1:10,000





- Key:
- Fenced Sites
 - Original Access Track Layout
 - Proposed Upgrade to Existing Track
 - Watching Brief Area
 - Proposed Borrow Pits



CFA
ARCHAEOLOGY LTD

CFA ARCHAEOLOGY LTD
The Old Engine House
Eskmills Park
Musselburgh
East Lothian, EH21 7PQ
t: 0131 273 4380
f: 0131 273 4381
e: info@cfa-archaeology.co.uk
w: www.cfa-archaeology.co.uk

| | | | |
|----------|---|-----------|---|
| Fig. No: | 4 | Revision: | A |
|----------|---|-----------|---|

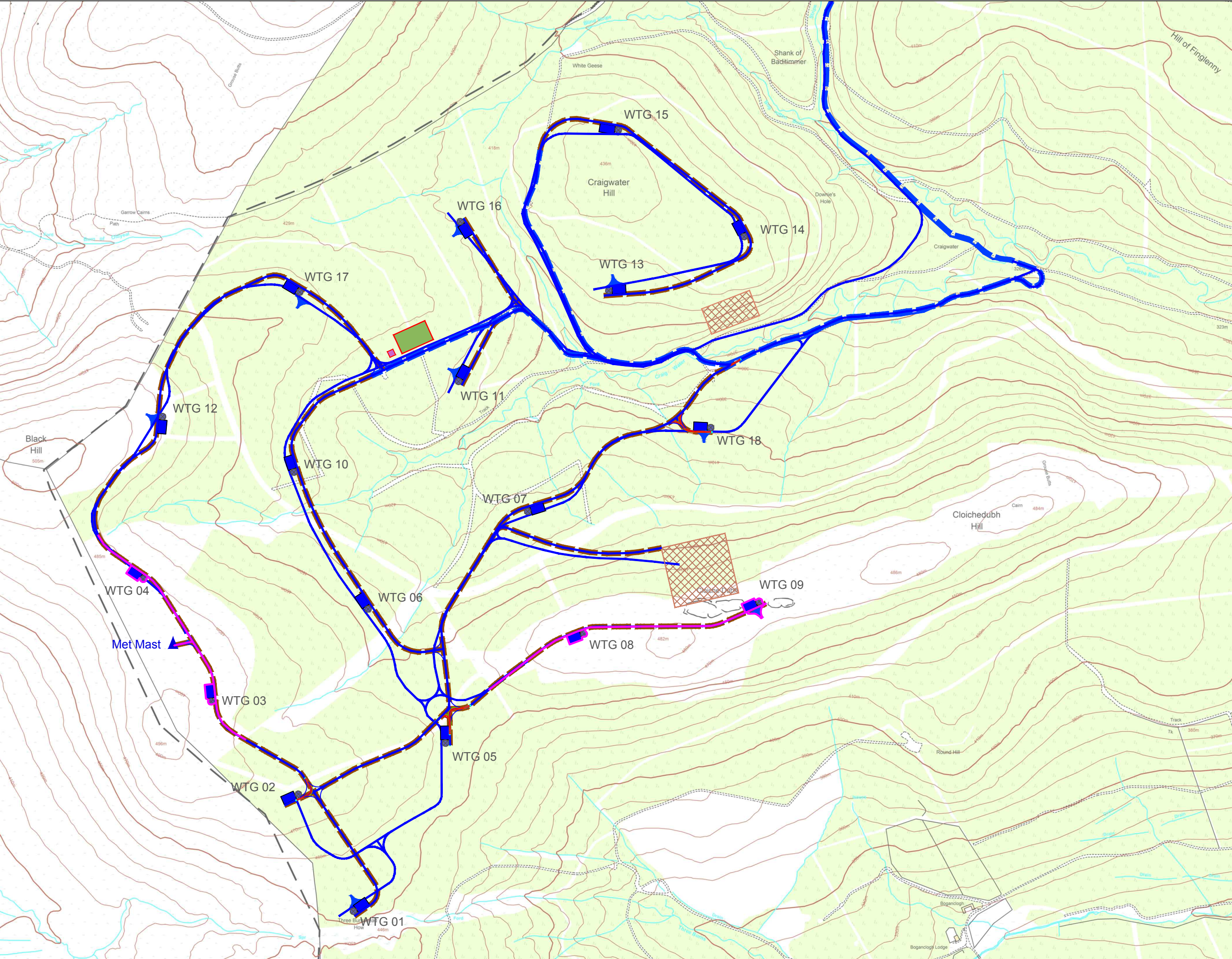
Title:
Plan of Haul Road, 3 of 3

Project:
Clashindarroch Windfarm,
Huntly, Aberdeenshire

Client:
Vattenfall Wind Power Ltd

Scale at A3:
1:10,000





Key:

- Proposed Turbine Location
- Proposed Site Compound
- Proposed Welfare Building Location
- Original Access Track Layout
- Proposed Upgrade to Existing Track
- Proposed Founded Access Track
- Watching Brief Area
- Proposed Borrow Pits
- Met Mast Location

CFA ARCHAEOLOGY LTD
The Old Engine House
Eskmills Park
Musselburgh
East Lothian, EH21 7PQ
t: 0131 273 4380
f: 0131 273 4381
e: info@cfa-archaeology.co.uk
w: www.cfa-archaeology.co.uk

| | |
|---------------------------------------------------------------|----------------|
| Fig. No: 5 | Revision: A |
| Title: Plan of Wind Farm | |
| Project: Clashindarroch Windfarm, Huntly, Aberdeenshire | |
| Client: Vattenfall Wind Power Ltd | |
| Scale at A3: 1:10,000 | |
| Drawn by: TB | Checked: IS |
| Report No: 3117 | |



Fig. 6 - Site 15 fenced off next to the access track



Fig. 7 - View of the farmhouse at Oxter Burn (Site 2)




| | | | |
|------------------------------------------------------------------------------------------------------------------------------------------------------------------------------------------------------------------------------------------------------------------------------------------------------------------------------------------------------------------------------------------------------------------------------------------------------------------------------------------------------------------------------------------------------------------------------------------------------------------------------------------------------------------------------------------------------------------------------------------------------------------------------------------------------------------------------------------------------------------------------------------------------------------------------------------------------------------------------------------------------------------|-----------------------|---------------------------|-------------------------------------------------------------------|
| Fig. No: 6-7 | | Revision: A | Project: Clashindarroch Windfarm, Huntly, Aberdeenshire |
| Drawn by: TB | Checked: IS | Report No: 3117 | Client: Vattenfall Wind Power Ltd |
| <div> <div> The copyright in this document (including its electronic form) shall remain vested in CFA Archaeology Ltd (CFA) but the Client shall have a licence to copy and use the document for the purpose for which it was provided. CFA shall not be liable for the use by any person of this document for any purpose other than that for which the same was provided by CFA. This document shall not be reproduced in whole or in part or relied upon by third parties for any use whatsoever without the express written authority of CFA. </div> <div> <div> REGISTERED ORGANISATION </div> <div>  <div> CFA ARCHAEOLOGY LTD </div> </div> </div> <div> CFA ARCHAEOLOGY LTD The Old Engine House Eskmills Park, Musselburgh East Lothian, EH21 7PQ T: 0131 273 4380 F: 0131 273 4381 e: info@cfa-archaeology.co.uk w: www.cfa-archaeology.co.uk </div> </div> | | | |



Fig. 8 - View of the farmhouse at Oxter Burn (Site 2)



Fig. 9 - General view of the new access road route looking NE from Kye Hill

| | | | | | | |
|------------------------|-----------------------|---------------------------|-------------------------------------------------------------------|---------------------------------------------------------------------------------------|---------------------------------------------------------------------------------------|-------------------------------------------------------------------------------------------------------------------------------------------------------------------------------------------------------------------------|
| Fig. No: 8-9 | | Revision: A | Project: Clashindarroch Windfarm, Huntly, Aberdeenshire |  |  | CFA ARCHAEOLOGY LTD The Old Engine House Eskmills Park, Musselburgh East Lothian, EH21 7PQ T: 0131 273 4380 F: 0131 273 4381 e: info@cfa-archaeology.co.uk w: www.cfa-archaeology.co.uk |
| Drawn by: TB | Checked: IS | Report No: 3117 | Client: Vattenfall Wind Power Ltd | | | |

The copyright in this document (including its electronic form) shall remain vested in CFA Archaeology Ltd (CFA) but the Client shall have a licence to copy and use the document for the purpose for which it was provided. CFA shall not be liable for the use by any person of this document for any purpose other than that for which the same was provided by CFA. This document shall not be reproduced in whole or in part or relied upon by third parties for any use whatsoever without the express written authority of CFA.



Key:



CFA ARCHAEOLOGY LTD
The Old Engine House
Eskmills Park
Musselburgh
East Lothian, EH21 7PQ
t: 0131 273 4380
f: 0131 273 4381
e: info@cfa-archaeology.co.uk
w: www.cfa-archaeology.co.uk

| | | | |
|-------------------------------------------------------------------------------------------------------------------------------------|----------|------------|---|
| Fig. No: | 10 | Revision: | A |
| Title: OS Second Edition 25 inch Map extract (Aberdeenshire, Sheet 033.10) showing the settlement at Oxter Burn in 1901 | | | |
| Project: Clashindarroch Windfarm, Huntly, Aberdeenshire | | | |
| Client: Vattenfall Wind Power Ltd | | | |
| Scale at A3: 1:1000 | | | |
| Drawn by: | Checked: | Report No: | |
| TB | IS | 3117 | |



Fig. 11 - The new access track through cut forestry to the N of Oxter Burn



Fig. 12 - Section through the ditch 012 at Oxter Burn



Fig. 13 - General view of the work at T4 from the N



| | | | |
|----------------------------------------------------------------------------------------------------------------------------------------------------------------------------------------------------------------------------------------------------------------------------------------------------------------------------------------------------------------------------------------------------------------------------------------------------------------------------------------------------------------------------------------------|-----------------------|-----------------------------------------------------------------------------------------------------------------------------------------------------------------------------------------------------------------------------------|-------------------------------------------------------------------|
| Fig. No: 11-13 | | Revision: A | Project: Clashindarroch Windfarm, Huntly, Aberdeenshire |
| Drawn by: TB | Checked: IS | Report No: 3117 | Client: Vattenfall Wind Power Ltd |
| <p>The copyright in this document (including its electronic form) shall remain vested in CFA Archaeology Ltd (CFA) but the Client shall have a licence to copy and use the document for the purpose for which it was provided. CFA shall not be liable for the use by any person of this document for any purpose other than that for which the same was provided by CFA. This document shall not be reproduced in whole or in part or relied upon by third parties for any use whatsoever without the express written authority of CFA.</p> | | | |
| | | | |
| | | | |
| | | <p>CFA ARCHAEOLOGY LTD The Old Engine House Eskmills Park, Musselburgh East Lothian, EH21 7PQ T: 0131 273 4380 F: 0131 273 4381 e: info@cfa-archaeology.co.uk w: www.cfa-archaeology.co.uk</p> | |



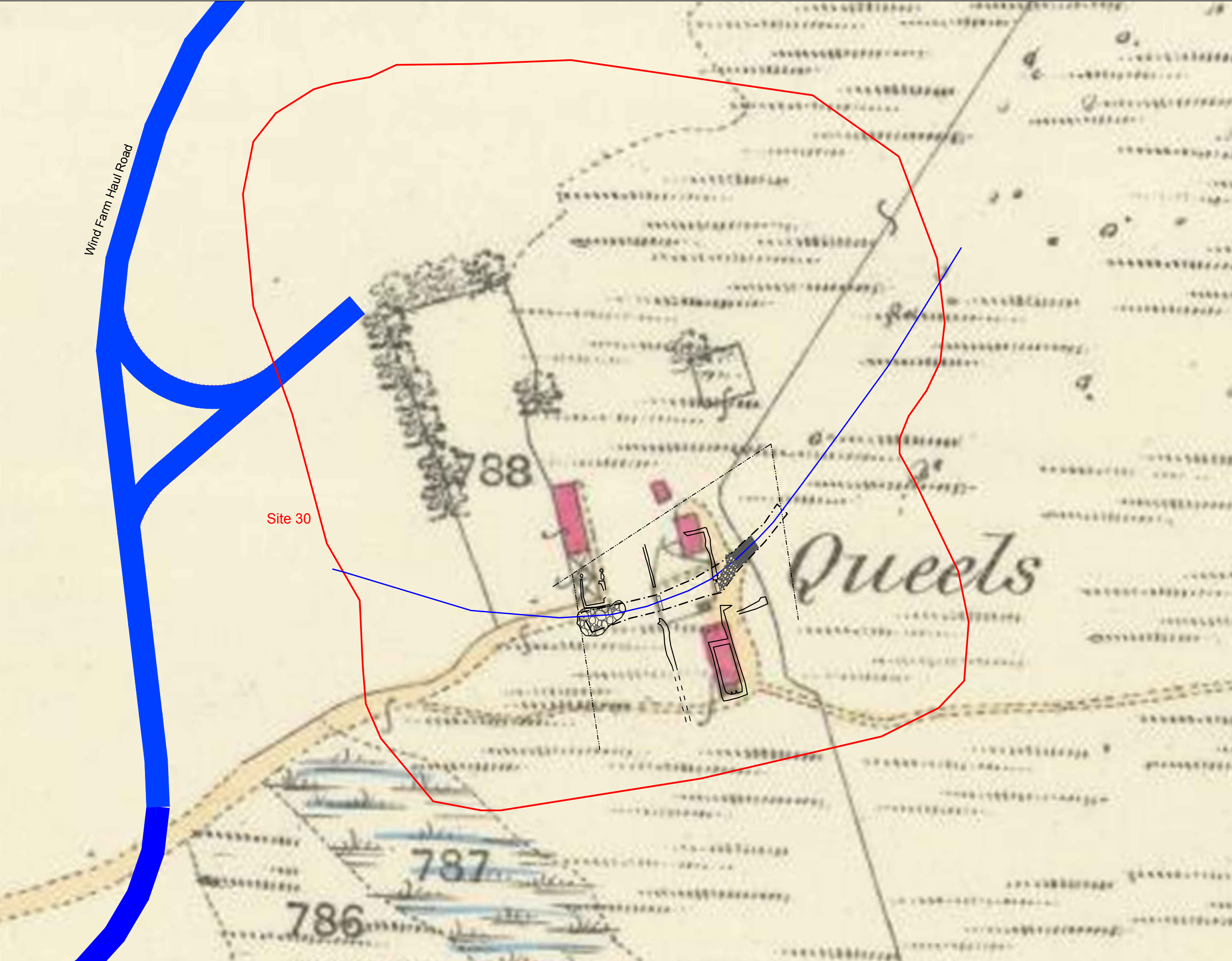
Fig. 14 - Deep peat at T4



Fig. 15 - Shallow peat and surface rocks at T9

| | | | | | | |
|--------------------------|-----------------------|---------------------------|-------------------------------------------------------------------|---------------------------------------------------------------------------------------|---------------------------------------------------------------------------------------|-------------------------------------------------------------------------------------------------------------------------------------------------------------------------------------------------------------------------|
| Fig. No: 14-15 | | Revision: A | Project: Clashindarroch Windfarm, Huntly, Aberdeenshire |  |  | CFA ARCHAEOLOGY LTD The Old Engine House Eskmills Park, Musselburgh East Lothian, EH21 7PQ T: 0131 273 4380 F: 0131 273 4381 e: info@cfa-archaeology.co.uk w: www.cfa-archaeology.co.uk |
| Drawn by: TB | Checked: IS | Report No: 3117 | Client: Vattenfall Wind Power Ltd | | | |

The copyright in this document (including its electronic form) shall remain vested in CFA Archaeology Ltd (CFA) but the Client shall have a licence to copy and use the document for the purpose for which it was provided. CFA shall not be liable for the use by any person of this document for any purpose other than that for which the same was provided by CFA. This document shall not be reproduced in whole or in part or relied upon by third parties for any use whatsoever without the express written authority of CFA.



Key:

— route of new water pipe



CFA ARCHAEOLOGY LTD
The Old Engine House
Eskmills Park
Musselburgh
East Lothian, EH21 7PQ
t: 0131 273 4380
f: 0131 273 4381
e: info@cfa-archaeology.co.uk
w: www.cfa-archaeology.co.uk

| | | | |
|----------|----|-----------|---|
| Fig. No: | 16 | Revision: | A |
|----------|----|-----------|---|

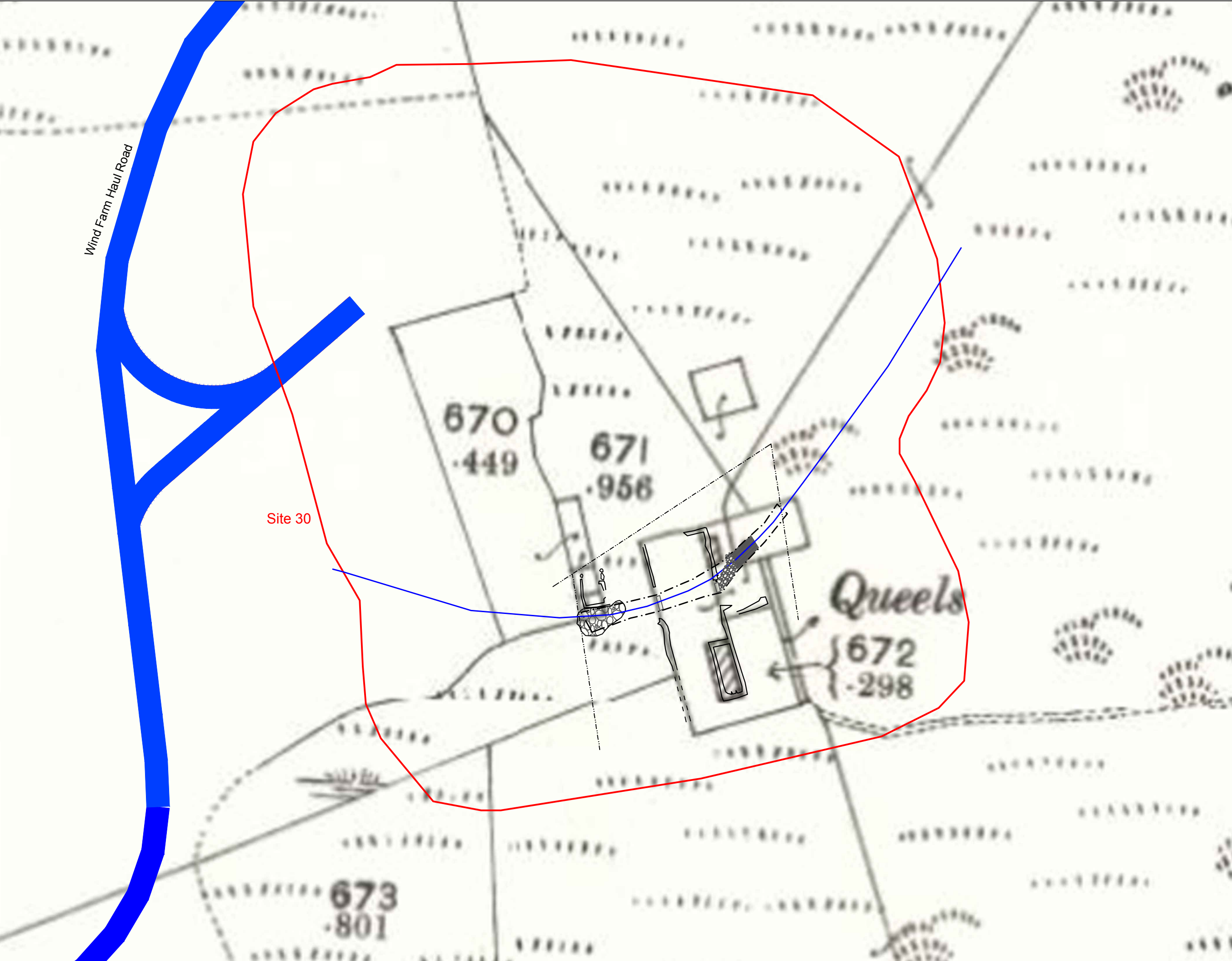
Title:
OS First Edition 25 inch Map extract
(Aberdeen Sheet XXV.8) showing
Queels in 1874

Project:
Clashindarroch Windfarm,
Huntly, Aberdeenshire

Client:
Vattenfall Wind Power Ltd

Scale at A3:
1:750




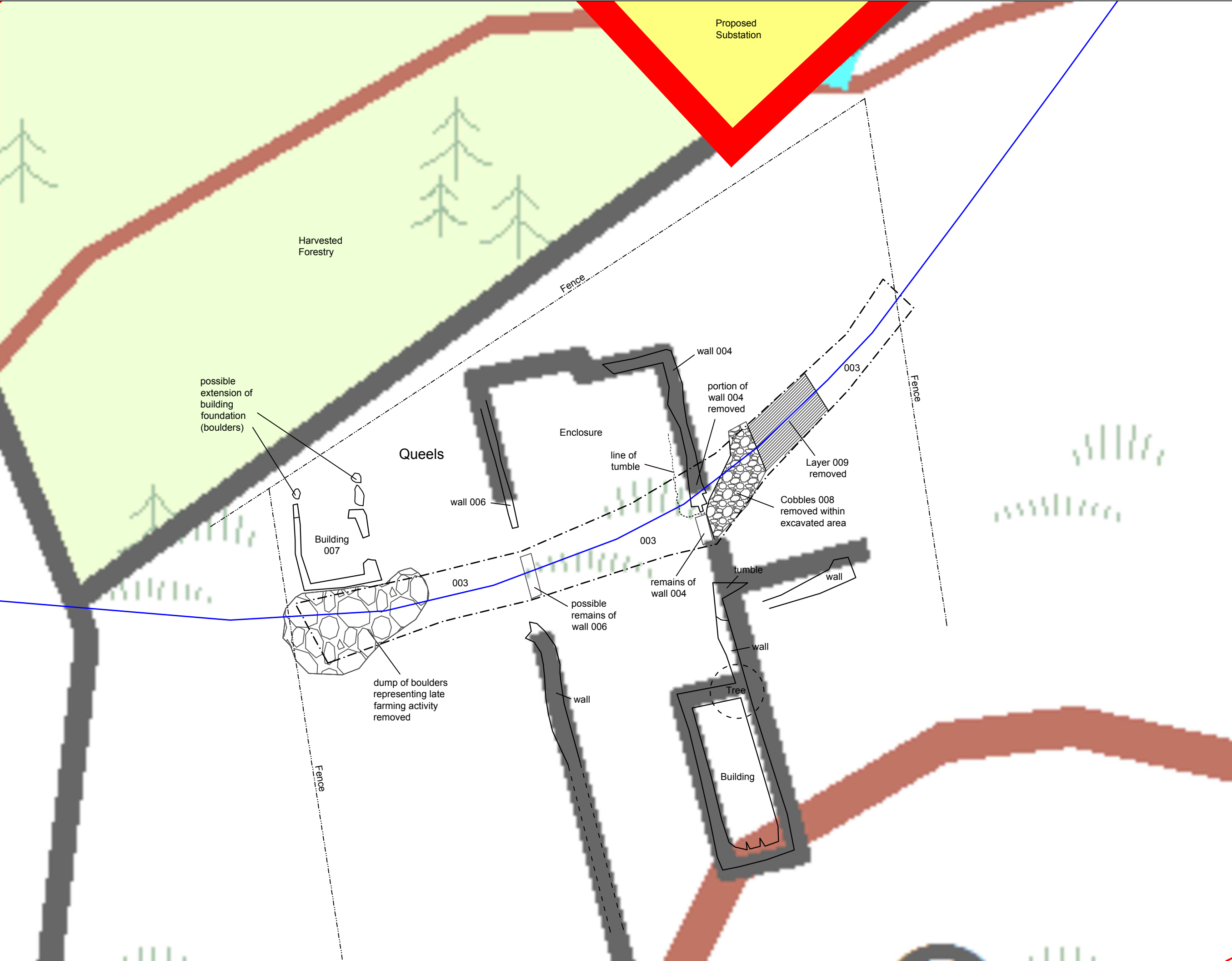


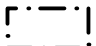

Key:
route of new water pipe



CFA ARCHAEOLOGY LTD
The Old Engine House
Eskmills Park
Musselburgh
East Lothian, EH21 7PQ
t: 0131 273 4380
f: 0131 273 4381
e: info@cfa-archaeology.co.uk
w: www.cfa-archaeology.co.uk

| | | | |
|------------------------------------------------------------------------------------------------------------|----|-----------|---|
| Fig. No: | 17 | Revision: | A |
| Title: OS Second Edition 25 inch Map extract (Aberdeenshire, Sheet 025.08) showing Queels in 1901 | | | |
| Project: Clashindarroch Windfarm, Huntly, Aberdeenshire | | | |
| Client: Vattenfall Wind Power Ltd | | | |
| Scale at A3: 1:750 | | | |
|  | | | |



- Key:
-  Area stripped down to natural deposits (003)
 -  route of new water pipe



CFA ARCHAEOLOGY LTD
The Old Engine House
Eskmills Park
Musselburgh
East Lothian, EH21 7PQ
t: 0131 273 4380
f: 0131 273 4381
e: info@cfa-archaeology.co.uk
w: www.cfa-archaeology.co.uk

| | | | |
|----------|----|-----------|---|
| Fig. No: | 18 | Revision: | A |
|----------|----|-----------|---|

Title:
Plan of excavations at Queels

Project:
Clashindarroch Windfarm,
Huntly, Aberdeenshire

Client:
Vattenfall Wind Power Ltd

Scale at A3:
1:250







Fig. 19 - Supervising removal of boulders recently dumped against building 007, Queels



Fig. 20 - Shot of wall 004 prior to demolition, Queels

| | | | | | | |
|--------------------------|-----------------------|---------------------------|-------------------------------------------------------------------|---------------------------------------------------------------------------------------|---------------------------------------------------------------------------------------|-------------------------------------------------------------------------------------------------------------------------------------------------------------------------------------------------------------------------|
| Fig. No: 19-20 | | Revision: A | Project: Clashindarroch Windfarm, Huntly, Aberdeenshire |  |  | CFA ARCHAEOLOGY LTD The Old Engine House Eskmills Park, Musselburgh East Lothian, EH21 7PQ T: 0131 273 4380 F: 0131 273 4381 e: info@cfa-archaeology.co.uk w: www.cfa-archaeology.co.uk |
| Drawn by: TB | Checked: IS | Report No: 3117 | Client: Vattenfall Wind Power Ltd | | | |

The copyright in this document (including its electronic form) shall remain vested in CFA Archaeology Ltd (CFA) but the Client shall have a licence to copy and use the document for the purpose for which it was provided. CFA shall not be liable for the use by any person of this document for any purpose other than that for which the same was provided by CFA. This document shall not be reproduced in whole or in part or relied upon by third parties for any use whatsoever without the express written authority of CFA.





Fig. 21 - Possible remains of wall 006 revealed within stripped area, Queels



Fig. 22 - Cobbling 008 prior to removal, Queels



Fig. 23 - Shot of section through wall 004 from the SE

| | | | | | | |
|--------------------------|-----------------------|---------------------------|-------------------------------------------------------------------|---------------------------------------------------------------------------------------|---------------------------------------------------------------------------------------|-------------------------------------------------------------------------------------------------------------------------------------------------------------------------------------------------------------------------|
| Fig. No: 21-23 | | Revision: A | Project: Clashindarroch Windfarm, Huntly, Aberdeenshire |  |  | CFA ARCHAEOLOGY LTD The Old Engine House Eskmills Park, Musselburgh East Lothian, EH21 7PQ T: 0131 273 4380 F: 0131 273 4381 e: info@cfa-archaeology.co.uk w: www.cfa-archaeology.co.uk |
| Drawn by: TB | Checked: IS | Report No: 3117 | Client: Vattenfall Wind Power Ltd | | | |

The copyright in this document (including its electronic form) shall remain vested in CFA Archaeology Ltd (CFA) but the Client shall have a licence to copy and use the document for the purpose for which it was provided. CFA shall not be liable for the use by any person of this document for any purpose other than that for which the same was provided by CFA. This document shall not be reproduced in whole or in part or relied upon by third parties for any use whatsoever without the express written authority of CFA.