

CFA ARCHAEOLOGY LTD

The Old Engine House
Eskmills Business Park
Musselburgh
East Lothian
EH21 7PQ

Tel: 0131 273 4380

Fax: 0131 273 4381

email: info@cfa-archaeology.co.uk

web: www.cfa-archaeology.co.uk

Author	Samantha Hickman MA AlfA FSA Scot Mhairi Hastie BSc MSc FSA Scot AlfA
Illustrator	Shelly Werner BA MPhil PhD FSA Scot
Editor	George Mudie MA FSA Scot MlfA
Commissioned by	Atmos Consulting Ltd
Date issued	March 2007
Version	
OASIS Reference	cfaarcha1-179433
Planning Application No.	
Grid Ref	NO 256 182

This document has been prepared in accordance with CFA Archaeology Ltd
standard operating procedures.

Newburgh Community Wind Farm

Cultural Heritage Assessment

6.1 INTRODUCTION

- 6.1.1 This chapter considers the likely effects on cultural heritage interests of the construction and operation of the proposed development. The assessment has been undertaken by CFA Archaeology Ltd, informed by comments and information provided by Historic Scotland and the Fife Council Archaeologist.
- 6.1.2 The assessment has been conducted in accordance with the Institute of Field Archaeologists Code of Conduct (IfA 2010) and Standard and Guidance for Archaeological Desk-based Assessment (IfA 2009).
- 6.1.3 The specific objectives of the cultural heritage study were to:
- Identify the cultural heritage baseline within and in the vicinity of the proposed development.
 - Assess the proposed development site in terms of its archaeological and historical environment potential.
 - Consider the potential and predicted effects of the construction and operation of the proposed development on the baseline cultural heritage resource, within the context of relevant legislation and planning policy guidelines.
 - Propose mitigation measures, where appropriate, to mitigate any predicted significant adverse effects.
- 6.1.4 The assessment was conducted with reference to the relevant statutory and planning framework for cultural heritage. Legislation includes the Ancient Monuments and Archaeological Areas Act 1979, the Planning (Listed Buildings and Conservation Areas) (Scotland) Act 1997 and the Town and Country Planning (Development Management Procedure) (Scotland) Regulations 2008. The primary planning guidance comprises the Scottish Historic Environment Policy document (SHEP), Scottish Planning Policy (SPP) (February 2010) and PAN 42 at national level, and at the regional and local level the Fife Structure Plan 2006-2026, the Tay Coast Local Plan 1998 and the St Andrews and East Fife Local Plan 2009.

6.2 STUDY AREA

- 6.2.1 The study area comprises of two distinct parts.
- 6.2.2 The proposed development: comprising the area of land within the application boundary, where direct effects are likely to occur.
- 6.2.3 The wider landscape: an area around the proposed development where effects on the setting of features including Scheduled Monuments, Listed Buildings, Conservation Areas and Gardens and Designed Landscapes may occur.
- 6.2.4 Figure 6.1 depicts the proposed development site landownership boundary, the survey area (highlighted in purple on Figure 6.1) and the location of archaeological sites and features identified by the cultural heritage assessment. A gazetteer of these sites is provided in Appendix 6.1.
- 6.2.5 Figure 6.2 shows the proposed wind farm in its wider setting together with the zones of theoretical visibility (ZTV) and the locations of key cultural heritage receptors within 10km of the proposed development that would have a theoretical view of the turbines. Appendix 6.2 contains a list of those key receptors and provides a summary assessment of the predicted indirect visual effects, on a site-by-site basis.

6.3 PLANNING AND LEGISLATIVE BACKGROUND

Context

- 6.3.1 Scotland's historic environment contributes to the Scottish Government's strategic

objectives and to the target of improving the state of Scotland's historic buildings, monuments and environment, and is identified as a national indicator and target under the National Performance Framework. The Scottish Historic Environment Policy (SHEP) sets out Scottish Minister's policies for the historic environment, and provides policy direction for Historic Scotland and a framework that informs the day-to-day work of a range of organisations that have a role and interest in managing the historic environment. Through the implementation of the SHEP, Scottish Ministers wish to achieve three outcomes for Scotland's historic environment.

6.3.2 Cultural heritage resources include sites with statutory and non-statutory designations, as set out in Scottish Planning Policy (SPP): Planning and the Historic Environment.

6.3.3 Sites with statutory designations include:

- Scheduled Monuments.
- Listed Buildings.
- Conservation Areas.
- Designated Shipwrecks.

6.3.4 Sites with non-statutory designations include:

- World Heritage Sites.
- Gardens and Designed Landscapes.
- Historic Battlefields.
- Other Historic Environment Interests.

6.3.5 Those resources relevant to the proposed development are Scheduled Monuments and other archaeological features, Listed Buildings and other buildings of historic or architectural importance, Conservation Areas and Garden and Designed Landscapes.

Sites with Statutory Designations

Scheduled Ancient Monuments

6.3.6 Under the Ancient Monuments and Archaeological Areas Act 1979 (1979 Act), the Scottish Ministers are required to compile and maintain a scheduled of monuments considered to be of national importance. The consent of the Scottish Ministers is required before any works are carried out which would have the effect of demolishing, destroying, damaging, removing, repairing, altering, adding to, flooding or covering up a Scheduled Monument. In addition, impacts of proposed development works upon the setting of a Scheduled Monument form an important consideration in the granting or refusal of planning consent to conduct development works. Further information on development control procedures relating to Scheduled Monuments is provided in the SHEP, SPP and Planning Advice Note (PAN 42).

Listed Buildings

6.3.7 Under the Planning (Listed Buildings and Conservation Areas) (Scotland) Act 1997 (1997 Act), the Scottish Ministers are required to compile a list of buildings of special architectural or historic interest. Such buildings are classified into Categories A, B and C(S), in decreasing order of importance. Planning authorities and the Scottish Ministers are required to have special regard for the desirability of preserving Listed Buildings and their settings, and any features of special architectural or historic importance they possess. Scottish Government policy and guidance is also provided in SHEP and SPP.

Conservation Areas

6.3.8 Under the Planning (Listed Buildings and Conservation Areas) Scotland Act 1997 Act, areas of special architectural or historic interest can be designated by local authorities

as Conservation Areas, the character or appearance of which it is desirable to preserve or enhance. Planning authorities are required to consider planning applications affecting the appearance, character or setting of Conservation Areas. Scottish Government policy and guidance is also provided in SHEP and SPP.

Sites with Non-Statutory Designations

Gardens and Designed Landscapes

- 6.3.9 The impact of a development on a designated Garden or Designed Landscape listed in 'An Inventory of Gardens and Designed Landscapes in Scotland or its Supplements' (Inventory; published by Historic Scotland) is a material consideration in the determination of a planning application, although the designation is non-statutory in effect. Under the provisions of the Town and Country Planning (General Development Procedure) (Scotland) Order 1992 (1992 Order), planning authorities must consult Historic Scotland on any development that may affect a site contained in the Inventory. Scottish Government policy and guidance is also provided in SHEP and SPP. Non-Inventory historic Garden and Designed landscapes that do not merit inclusion in the Inventory are designated by the local council and are included in Local Plans.

Other Historic Environment Interests

- 6.3.10 There is a range of other non-designated archaeological sites, monuments and areas of historic interest, including battlefields, historic landscapes, other gardens and designed landscapes, woodlands and routes such as drove roads that do not have statutory protection. Sites without statutory protection are curated by the local planning authority, and SPP and PAN 42 provide national planning policy guidance and advice on the treatment of such resources. PAN 42 indicates that the principle that should underlie all planning decision-making is preservation of cultural heritage resources in situ, where possible and by record if destruction cannot be avoided. It is recognized in the PAN that preservation may not always be possible, and where damage is unavoidable various mitigation measures may be proposed.

Regional and Local Planning Policy Guidance

Fife Structure Plan 2006-2026 (Approved 2009)

- 6.3.11 The Fife Structure Plan 2006-2026 (Approved 2009) and the Tay Coast Local Plan (adopted 1998) establish the Local Authority's position with regard to sites of archaeological or historical importance.

Fife Structure Plan 2006-2026 (Approved 2009)

- 6.3.12 Policy R1 provides criteria against which all future wind farm applications will be considered and sets out the material factors to be considered in the process of preparing and determining planning application for wind turbines and wind farm developments. The criteria states that in all cases applications for wind farms should be assessed in relation to their impacts on the historic environment and how any adverse effects can be minimised.
- 6.3.13 Paragraph 4.11 of the Structure Plan states that it is important to protect the archaeological heritage of Fife, particularly where it is of national and regional importance, from the adverse effects of development. It is directed that Local Plan policies should provide protection for the built and historic environments and for archaeology.

Tay Coast Local Plan (Adopted 1998)

- 6.3.14 Policy E4 states that the Council will exercise its statutory powers to protect, conserve, and enhance the environmental quality of the Local Plan area.
- 6.3.15 Policy 5 states that development proposals affecting listed buildings and their settings

will be required to conform to the highest possible standards of design, including the siting of new buildings, choice of appropriate finishing materials, landscaping and the form of boundary enclosures.

- 6.3.16 Policy E6 states that development proposals should not adversely affect sites listed in the Inventory of Gardens and Designed Landscapes. Where development is considered appropriate, it will be required to conform to the highest possible standards of design, including the siting of new buildings, choice of appropriate finishing materials, landscaping, and the form of boundary enclosures.
- 6.3.17 Policy E17 states that development proposals will not be supported if they are likely to have an adverse effect on sites of heritage interest. This Policy will also be applied to any additional sites which may come forward within the lifetime of the Local Plan.
- 6.3.18 The Tay Coast Local Plan is to be replaced by the St Andrews and East Fife Local Plan which is currently being finalised (see below).

St Andrews and East Fife Local Plan (Finalised 2009)

- 6.3.19 Policy E6 (Conservation Areas) states that the design, materials, scale and siting of any development shall be appropriate to the character of the Conservation Area and its setting.
- 6.3.20 Policy E7 (Listed Buildings) states that development affecting a listed building, or its setting, shall preserve the building, or its setting, or any feature of special architectural or historic interest which it possesses. The layout, design, materials, scale, siting and use of any development shall be appropriate to the character and appearance of the listed building and its setting.
- 6.3.21 Policy E11 (Historic Gardens and Designed Landscapes) states that development affecting Historic Gardens and Designed Landscapes shall protect, preserve and enhance such places and shall not impact adversely upon their character, upon important views to, from or within them, or upon the site or setting of component features which contribute to their value.
- 6.3.22 Policy E12 (Ancient Monuments and Archaeological Sites) states that Scheduled Monuments and other identified nationally important archaeological resources shall be preserved in situ, and with an appropriate setting. Developments that have an adverse effect on Scheduled Monuments or the integrity of their setting shall not be permitted unless there are exceptional circumstances. All other archaeological resources shall be preserved in situ where feasible. The significance of any impacts on archaeological resources and their settings will be weighed against other merits of the development proposals in the determination of planning applications.
- 6.3.23 The developer may be requested to supply a report of an archaeological evaluation prior to determination of the planning application. Where the case for preservation does not prevail, the developer shall be required to make appropriate and satisfactory provision for archaeological excavation, recording, analysis and publication, in advance of development.
- 6.3.24 Where compatible with their preservation, proposals for the enhancement, promotion and interpretation of ancient monuments and archaeological sites will be supported.
- 6.3.25 Policy I1 (Renewable Energy) states that renewable energy developments will be supported provided that there is no significant adverse impact on local built environment.

6.4 APPROACH TO THE ASSESSMENT

Consultation

- 6.4.1 Scoping requests were sent to Historic Scotland and to the Fife Council Archaeologist by Atmos Consulting Ltd (19.05.2010) requesting a scoping opinion for the proposed wind farm.

- 6.4.2 A consultation letter was sent to Fife Council Archaeologist by CFA Archaeology Ltd (09.09.10) requesting an SMR data extract for the proposed wind farm site, and for the locations of Non-Inventory Designed Landscapes (NIDI) within 10km of the proposed wind farm.
- 6.4.3 A consultation letter was sent to the Fife Council (09.09.10) and Perth and Kinross (09.09.10) Conservation Officers (Planning) to obtain their opinion on the possible effects of the proposed development on cultural heritage resources within their remit.

Data Collection

Desk-based Assessment

- 6.4.4 Up-to-date information was obtained from appropriate sources on the locations of cultural heritage sites with statutory protection and non-statutory designations either within or in the vicinity of the proposed wind farm area.
- 6.4.5 Details of the locations and extents of Scheduled Monuments, Listed Buildings, Garden and Designed Landscape in GIS were downloaded from the Historic Scotland Spatial Data Warehouse¹. Additional information was provided on known archaeological sites and features within the proposed wind farm area from the Fife Council Sites and Monuments Records (SMR).
- 6.4.6 Information on the character and condition of known archaeological sites and monuments within the proposed wind farm area was obtained from the National Monuments Record of Scotland (NMRS) via the online Pastmap² resource maintained by the Royal Commissions and the Ancient and Historic Monuments of Scotland (RCAHMS) and Historic Scotland.
- 6.4.7 Ordnance Survey maps and other early maps held by the Map Library of the National Library of Scotland were examined, to provide information on sites of potential archaeological significance and on historic land-use development.
- 6.4.8 An assessment was made of vertical aerial photograph collections held by the RCAHMS. Sorties dating from 1946 to 1969 were available for examination.
- 6.4.9 Bibliographic references were consulted to provide background and historical information.
- 6.4.10 The online Historic Land-Use Assessment Data for Scotland maps (HLA maps³), maintained by the RCAHMS was consulted for information on the historic land use character of the proposed development.
- 6.4.11 The Scottish Palaeoenvironmental Database⁴ which records the distribution of known palaeoenvironmental sites within Scotland.

Reconnaissance Field Survey

- 6.4.12 A reconnaissance field survey (equating to a RCAHMS Level 1⁵ survey) of the proposed development area, including: the turbine envelope and access road areas (boundary shown in purple on Figure 6.1), was undertaken, during September 2010, with the following aims:
- To assess the presence / absence, character and condition of known archaeology and heritage features, identified through the desk-based assessment.

¹ Historic Scotland Spatial Data Warehouse: <http://hsewsf.sedsh.gov/gisdl.html>

² Pastmap: <http://jura.rcahms.gov.uk/PASTMAP/start.jsp>

³ HLA maps: <http://www.rcahms.gov.uk>

⁴ SPAD: <http://xweb.geos.ed.ac.uk/~ajj/spad>

⁵ Royal Commission on the Ancient and Historical Monuments of Scotland Corporate Plan 2004-9, Survey and Recording Policy, p12 www.rcahms.gov.uk/survey

- To identify any further features of cultural heritage interest not detected from the desk-based study.
- To assess the proposed development area for its potential to contain currently unrecorded, buried archaeological remains.

6.4.13 Identified sites were recorded on pro-forma monument recording sheets and by digital photography and their positions (and where appropriate their extents) were logged using a Global Positioning System (GPS). These archives materials would be offered to the Fife Council Sites and Monuments Record (SMR). No intrusive archaeological interventions have been carried out as part of this assessment.

6.5 METHOD OF ASSESSMENT

Identification of External Receptors and Characterisation of their Settings

- 6.5.1 The setting of a heritage site, feature or area is defined as 'the immediate and extended environment that is part of, or contributes to, its significance and distinctive character (International Council on Monuments and Sites (ICOMOS 2005)'. Beyond the physical and visual aspects, the setting includes interaction with the natural environment; past or present, social or spiritual practices, customs, traditional knowledge, use or activities and other forms of intangible cultural heritage aspects that created and form the space as well as the current and dynamic cultural, social and economic context.
- 6.5.2 Historic Scotland guidance (2009⁶) notes that the setting of a receptor could be affected by the introduction of new development into its surroundings, even if that new development would not be directly visible from the receptor. Such cases may arise, for example, when both development and a highly sensitive receptor would be caught in important views, vistas or prospects from somewhere other than the receptor location.
- 6.5.3 Details of previously recorded cultural heritage sites, monuments and landscape features with statutory and non-statutory designations⁷, undesignated archaeological sites of likely national importance, within the landscape surrounding the proposed development were obtained. A Zone of Theoretical Visibility (ZTV) map, generated for the proposed development, was used to identify those cultural heritage receptors within 10km of the proposed development from where there is theoretical intervisibility with one or more wind turbines.
- 6.5.4 The baseline setting of each relevant receptor or related group of receptors was then characterised on a case-by-case basis. Characterisation of setting of a receptor was based upon its properties and location, and took into account the factors identified in the guidance issued by Historic Scotland's definition of 'setting' established by ICOMOS and factors cited in the guidance issued by Historic Scotland. The baseline setting of each receptor was characterised principally in terms of the:
- Archaeological / historical context of the receptor;
 - Current landscape and visual surroundings of the receptor;
 - Aesthetic and experiential properties of the receptor within its surroundings;
 - Social value (actual or potential) of the receptor as a recreational / leisure or educational resource.

⁶ Historic Scotland (2009) Assessment of Impact on the Setting of the Historic Environment Resource – Some General Considerations, Scoping of Development Proposals, Annex.

⁷ Scheduled Monuments, Listed Buildings, Conservation Areas, Gardens and Designed Landscapes; including candidate sites where applicable

- 6.5.5 The assessment focused on cultural heritage sites most likely to receive significant effects on their settings (i.e. those closest to the development area and those specifically identified as requiring assessment by Historic Scotland). Where relevant draft viewpoint photomontages, and wireframes generated for the project were used to aid the assessment. Factors included the location and orientation of the site; important views of or from principal factors; the importance, if applicable, of designed settings, and any obvious views or vistas.
- 6.5.6 The outcome of this work was an understanding, involving the application of professional judgement, of the key characteristics that define the setting of each receptor. Where it is established that the setting of a receptor is such that there is no potential for it to be affected by the presence of the development, the receptor would not be considered further in the assessment.
- 6.5.7 Sites of national and regional importance and of high sensitivity up to 10km from the proposed turbines have been assessed, including: Scheduled Monuments, Category A and B Listed Buildings, Conservation Areas and Gardens and Designed Landscapes (GDL). Locally important sites, Category C(S) Listed Buildings and Non-Inventory Designed Landscapes (NIDL) have been assessed up to 5km from the proposed turbines. The limit of the study has been set out taking into account the guidance provided in PAN45: Renewables Energy Technologies.

Assessing Significance

- 6.5.8 The effects of the proposed development on cultural heritage assets were assessed on the basis of their type (direct, secondary and indirect), nature (beneficial, neutral or adverse), and longevity (reversible, short-term or long-term, irreversible, permanent). The assessment took into account the sensitivity of the receptor and the magnitude of effect. Mitigation measures designed to prevent, reduce or offset significant adverse effects are proposed, and residual effects are assessed taking into account the likely effectiveness of the mitigation proposed.
- 6.5.9 The assessment of sensitivity of archaeological and heritage assets reflects the relative weight which statute and policy attached to them, principally as published in Scottish Planning Policy (SPP) and Scottish Historic Environment Policy (July 2009). Table 6.1 summarises the relative sensitivity of key cultural heritage resources.

Table 6.1: Sensitivity of Cultural Heritage Assets

Sensitivity	Definition / Criteria
High	Sites of national or international importance, including World Heritage Sites Scheduled Monuments, and sites proposed for scheduling Undesignated archaeological sites and areas of likely national importance identified in HERS/SMRs
Medium	Sites of regional importance, including: Archaeological sites and areas of distinctive regional importance Archaeologically Sensitive Areas Category B listed buildings Conservation Areas
Low	Sites of local importance, including:

CHAPTER SIX: CULTURAL HERITAGE

NEWBURGH COMMUNITY WIND FARM ENVIRONMENTAL STATEMENT

	Archaeological sites of local importance Category C(S) listed buildings Unlisted historic buildings and townscapes with local (vernacular) characteristics
Negligible	Sites of little or no importance, including: Sites of former archaeological features Unlisted buildings of minor historic or architectural interest Poorly preserved examples of particular types of feature

Assessment of Physical Effects

- 6.5.10 Criteria for assessing magnitude of direct physical effects, which measures the degree of change to the baseline condition of a feature that would result from the construction of one or more element of the proposed development, are presented in Table 6.2.

Table 6.2: Magnitude of Physical Effects

Level of Magnitude	Definition
High	A fundamental change to the baseline condition of the receptor, leading to total or major alteration of character.
Medium	A material, partial alteration of character.
Low	Slight, detectable alteration of the baseline condition of the receptor.
Imperceptible	A barely distinguishable change from baseline conditions.

- 6.5.11 Sensitivity of the receptor and magnitude of effect are used to inform the professional judgment of the likely significance of the physical effect. Table 6.3 summarises the criteria for assigning significance of a physical effect. Major and moderate effects are considered to be significant in terms of the EIA Regulations. Where a physical effect on a feature is likely, the assessment contains a summary statement of the 'cultural significance' of that feature (following the guidance defined in Annex 1 of Scottish Historic Environment Policy (July 2009).

Table 6.3: Significance of Physical Effects

Magnitude ▼	Sensitivity▶			
	High	Medium	Low	Negligible
High	Major	Major	Moderate	Minor
Medium	Major	Moderate	Minor	Negligible
Low	Moderate	Minor	Negligible	Negligible
Imperceptible	Minor	Negligible	Negligible	Negligible

Assessment of Effects on Setting

- 6.5.12 For each receptor where a potential effect on setting has been identified, the assessment of possible effects adopts a four-stage approach:
- Identification of the characteristics of the setting of the receptor (see above).
 - Assessment of the sensitivity of that setting.
 - Identification of how the presence of the proposed development would affect that setting (magnitude of effect).
 - Assessment of significance of effect.

Criteria for Assessing Sensitivity of Setting

- 6.5.13 Sensitivity of setting has been assessed by considering two factors:
- The relative weight which statute and policy attaché to the receptor and its setting.
 - The degree to which the baseline setting contributes to the understanding and / or appreciation, and hence value, of the receptor.
- 6.5.14 The relative weight that statute and policy attach to the receptor and its setting is determined using the sensitivity of archaeological and heritage resources set out in Table 6.1. Where individual designated receptors are present within larger designated areas (e.g. Listed Buildings within a Conservation Area; Scheduled Monuments within Areas of Archaeological Importance (AAIs)); the sensitivity is stated as the higher of the two designations.
- 6.5.15 The degree to which the baseline setting contributes to the understanding and / or appreciation of the receptor has been assessed according to the criteria set out in Table 6.4.

Table 6.4: Contribution of Setting to Understanding and Appreciation of a Cultural Heritage Receptor

Contribution	Definition
High	A setting which makes a strong positive contribution to the understanding and/or appreciation of the siting and/or historical/archaeological/architectural context of a receptor. (E.g. a prominent topographic location; surroundings that include related monuments in close association; surroundings that are believed to be little changed from those when the receptor was created).
Moderate	A setting which makes some positive contribution to the understanding and/or appreciation of the siting and/or historical/archaeological/architectural context of a receptor. (E.g. surroundings that complement the siting and appearance of a receptor, such as the presence of a feature of the rural past within a more recent farming landscape containing little or no urban or industrial development).
Low	A setting which makes little positive contribution to the understanding and/or appreciation of the siting and/or historical/archaeological/architectural context of a receptor. (E.g. where surroundings only partially complement the siting and appearance of a receptor, such as the presence of a feature of the

	rural past within a partly urbanised or industrialised landscape).
Negligible	A setting which does not contribute positively to the understanding and/or appreciation of the siting and/or historical/archaeological/architectural context of a receptor. (E.g. immediate surroundings of commercial coniferous single species woodland or an industrial development that is not relevant to understanding the context of the receptor).

6.5.16 These two criteria are combined to assess the sensitivity of a setting, as set out in Table 6.5.

Table 6.5: Sensitivity of Setting of a Receptor

Sensitivity of Receptor ▼	Contribution ►			
	High	Moderate	Low	Negligible
High	High	High	Medium	Low
Medium	High	Medium	Low	Low
Low	Medium	Low	Low	Low

6.5.17 Table 6.6 defines the overall contribution of setting. The characterisation of baseline setting for each receptor identified any specific elements of that setting which individually provide a greater contribution to understanding and/or appreciation of a receptor than the overall contribution assessment might suggest.

Table 6.6: Magnitude of Effects on Setting

Level of Magnitude	Definition
High	Fundamental effects obviously changing the surroundings of a receptor, such that its baseline setting is substantially or totally altered.
Medium	Effects discernibly changing the surroundings of a receptor, such that its baseline setting is partly altered.
Low	Slight, but detectable effects that do not alter the baseline setting of the receptor materially.
Imperceptible	A very slight and barely distinguishable change from baseline conditions.

Assessment of Effect Significance

6.5.18 The significance of an impact on setting depends on both the magnitude of the effect and the sensitivity of the setting of a receptor. Table 6.7 presents a matrix that has been used to inform the assessment in combination with professional judgement.

CHAPTER SIX: CULTURAL HERITAGE

Table 6.7: Significance of Effect on Setting

Magnitude ▼	Sensitivity ►		
	High	Moderate	Low
High	Major	Major	Minor
Medium	Major	Moderate	Minor
Low	Minor	Minor	Minor
Imperceptible	Negligible	Negligible	Negligible

- 6.5.19 The proposed criteria for determining the significance of cultural heritage effects are provided in Table 6.8. Effects considered to be of major or moderate significance are deemed to be significant in terms of the EIA Regulations.

Table 6.8: Significance Criteria

Significance of Effect	Definition
Major	A change to the fabric or setting that leads to a substantial effect on the character, quality or context of a receptor.
Moderate	Changes to the fabric or setting that lead to a material effect on the character, quality or context of a receptor.
Minor	Changes to the fabric or setting that lead to a detectable but non-material change effect on the character, quality or context of a receptor.
Negligible	Changes to the fabric or setting that lead to, at most, a negligible effect on the character, quality or context of a receptor.

6.6 BASELINE CONDITIONS

Consultation Responses

- 6.6.1 Scoping responses, raising cultural heritage issues, were received from Historic Scotland and the Fife Council Archaeologist who were consulted as part of the pre-application process. Summaries are provided below in Table 6.8.
- 6.6.2 Consultation letters (09.09.10 & 07.12.10) were sent to the Conservation Planning Officers for Fife Council and Perth and Kinross Council to obtain their opinion on the likely effects of the proposed development and to obtain information on cultural heritage resources within their remits. No replies were received from the Planning Officers.

Table 6.8: Consultation Responses

Consultee	Scoping Opinion / Other	Issues Raised
Historic	Scoping Opinion	Set out the underlying principles for assessing the impacts of the development on the cultural

<p>Scotland</p>	<p>(17.06.10)</p>	<p>heritage resource.</p> <p>Confirmed that there are no Scheduled Monuments, Listed Buildings or InventORY Gardens OR Designed Landscapes within the proposed development.</p> <p>Identified concerns regarding the impact on the setting of four specific designated sites; Lindores Abbey (836 /38479); Denmylne Castle (852 / 2592); Norman’s Law Fort (814), and Errol Park Inventory status designed landscape.</p> <p>Provided a list of thirteen sites which they required to be considered in terms of potential impacts on their settings in the ES. These sites are:</p> <p><i>Scheduled Monuments (also Category A Listed Buildings)</i></p> <ul style="list-style-type: none"> • Denmylne Castlle (852 / 2592) • Lindores Abbey (836 / 38479) • Ballinbreich Castle (844 / 9020) • Abdie Old Kirk (825 / 4311) <p><i>Scheduled Monuments</i></p> <ul style="list-style-type: none"> • Lindores eelhouse (3545) • Abdie Church symbol stone (7883) • Cowden Hill enclosure and round-houses (11082) • Norman’s Law fort (814) • Ayton Chapel (9852) <p><i>Category A Listed Buildings</i></p> <ul style="list-style-type: none"> • Lindores Abbey detached section (38480) • Kinfauns Castle (11955) • Megginch Castle (10963) <p><i>Designed Landscape</i></p> <ul style="list-style-type: none"> • Errol Park <p>Requested that appropriate visualisations, photomontages and wireframe views, are taken from Lindores Abbey, Denmylne Castle, Norman’s Law Fort and Errol Park GDL and included in the assessment of these cultural heritage assets.</p> <p>Recommended that the viewpoints chosen from Lindores Abbey and Denmylne Castle should be</p>
-----------------	-------------------	--

CHAPTER SIX: CULTURAL HERITAGE

NEWBURGH COMMUNITY WIND FARM ENVIRONMENTAL STATEMENT

		unobstructed as possible.
Fife Council Archaeologist	Scoping Opinion (30.07.2010) & Other Consultation (email 07.12.10 & letter 09.12.10))	<p>Confirmed that in general terms the cultural heritage scope that is proposed appears to be adequate.</p> <p>Confirmed that there are no significant archaeological sites, monuments or deposits recorded within or near the area proposed for development.</p> <p>Provided GIS data from the SMR for all cultural heritage sites within the proposed development area and within 10km of the proposed development boundary.</p> <p>Considered that visual impacts on heritage assets within the ZTV will not be a major issue in the determination of this application.</p> <p>Advised that in assessing the general archaeological character of the proposed wind farm it was apparent that there is a reasonable likelihood that as yet unrecorded sites / deposits of archaeological interest survive at the summit of the Lindores Hill.</p> <p>Advised that given the large number of prehistoric sites within close proximity to the development area they would require that all ground breaking be archaeologically monitored.</p> <p>Advised that the Fife Council would expect to see in the ES:</p> <ul style="list-style-type: none"> • Evidence that the applicant was aware of the archaeological potential of the site. • Evidence that the applicant had undertaken a reasonable investigation to attempt to identify this archaeological potential. • A specific and detailed archaeological mitigation strategy that outlined exactly how the applicant intended to deal with the archaeological implications associated with the site.

Current Baseline

General

- 6.6.3 The baseline assessment was carried out for the proposed development area, including the wind turbine envelope and access road locations (purple line boundary on Figure 6.1). Numbers in parentheses in the following sections refer to site numbers annotated on Figures 6.1 and 6.2, and detailed in Appendices 6.1 and 6.2.
- 6.6.4 Thirteen cultural heritage sites and features were recorded in the proposed

development area (Figure 6.1). There are 67 Scheduled Monuments, of which six are also Category A Listed Buildings and seven are Category B Listed Buildings; 15 additional Category A Listed Buildings; 128 additional Category B Listed Buildings; five Garden and Designed Landscapes, and five Conservation Areas within 10km of the proposed development and 134 Category C(S) Listed Buildings within 5km of the proposed development that are all predicted by the ZTV to have theoretical intervisibility of the proposed wind turbines.

- 6.6.5 There are no Scheduled Monuments or Listed Buildings present within the proposed wind farm site and no part of the proposed development would lie within a Conservation Area or Garden and Designed Landscape.
- 6.6.6 The NMRS and SMR hold one record for a possible crop mark site (13) visible on aerial photographs from 1994 just south of Braeside of Lindores.
- 6.6.7 Examination of historical maps led to the identification of four sites and features within the proposed wind farm site: Braeside Mains Farm (1), two buildings and associated enclosures (2, 4), a well (3), and a track (8).
- 6.6.8 An area of relict rig and furrow cultivation (9) was identified from the examination of vertical aerial photographs.
- 6.6.9 Field survey provided further information on the baseline condition of the sites identified through the desk-based assessment, and identified six additional sites and features (5, 6, 7, 9, 10, 11).
- 6.6.10 The Scottish Palaeoenvironmental Database provided no relevant information specific to the proposed development site.
- 6.6.11 The Historic Land-Use Assessment data (HLA Map) indicated that the proposed development site consists principally of rough pasture. It also identified a small number of rectilinear fields of 18th to 19th century date concentrated around the main settlements in the area (including, Braeside Mains, Park Hill and Denmylne) along with small patches of 20th century coniferous plantation, particularly on the western slopes of Park Hill.

Character of cultural heritage resource

- 6.6.12 The quantity of cultural heritage sites and features identified within the proposed wind farm site was limited. The majority of features were post-medieval, or earlier, agricultural remains and post-medieval farming structures. Detailed descriptions are provided in Appendix 6.1 and the sites are discussed thematically below.

Farmsteads and other buildings

- 6.6.13 A farmstead, of at least 18th century date, is recorded at Braeside Mains (1) on Ainslie's map of 1775, annotated as 'Newland Doors'. By the mid-19th century the farmstead is shown as a rectangular steading and associated farmhouse (Ordnance Survey 1st Edition map, 1856). Today the farm and steading have been converted into private residential homes and although the farm has been modified since the 1st Edition map, some of the mid-19th century farm buildings have been retained. The farmstead is considered to be of low sensitivity and local historic environment interest.
- 6.6.14 The Ordnance Survey 1st Edition map (1855 & 1856) show two further roofed buildings and associated enclosures (2, 4) close to Braeside Mains (1). Both may be ancillary farm buildings or farm workers cottages associated with the farmstead. There are no surface remains of the first building (2), or its enclosure. A modern farm track now crosses the site. Its location as shown on Figure 1 has been taken from the Ordnance Survey 1st Edition map. The site is of unknown, but no more than low, sensitivity. The remains of the second building (4) and enclosure still survive, approximately 450m to the northwest of Braeside Mains, although the remains are poorly preserved. All that survives of the building are the two gable ends which are incorporated into the enclosure wall. The enclosure which is annotated as 'sheepfold'

on the current Ordnance Survey map has recently been modified to form a horse jumping area. The building remains are of low sensitivity and local historic environment interest.

Agricultural remains

- 6.6.15 The proposed development site is at present principally used for rough grazing, with small areas of improved pasture surrounding Braeside Mains (1). Areas of former rig and furrow cultivation (9, 10) are present close to the summit of Silver Hill suggesting that the higher ground has been cultivated some time in the past. The rig and furrow remains vary in their state of preservation; most is visible only as very faint outlines, although one area of former rig (9) survives well in an area of rough pasture. The former rig (9) has a wide wavelength of around 10m. This area is depicted as rough pasture on the Ordnance Survey 1st Edition map (1855) suggesting that the rig remains are associated with much earlier cultivation, 18th century or earlier in date, which had reverted back to rough pasture by the mid-19th century. The rig remains are of low sensitivity and of local historical environment interest.
- 6.6.16 A small number of large clearance cairns (6, 11, 12), produced by the collection and dumping of stone from topsoil during ploughing, were identified in areas of what is now rough pasture. All but one (6) are preserved as grass-covered mounds. A small group of cairns (11) lies at the edge of an area of now poorly defined former rig and furrow (10a), suggesting that they may well be contemporary in date. The cairns are considered to be of low sensitivity and local historic environment interest.

Other features

- 6.6.17 A well (3) is depicted on the Ordnance Survey 1st Edition map (1856) approximately 200m west of Braeside Mains (1). There is no surviving surface trace of the well; it is judged to be of negligible sensitivity and lesser historic environment interest.
- 6.6.18 A short section of track (5) survives as a slight Holloway, just southwest of the remains of an old building (4). The track is not depicted on the Ordnance Survey 1st Edition map (1855) suggesting this was a later track, possibly linking the building with Braeside Mains (1). The remains of the track are considered to be of negligible sensitivity and lesser historic environment interest.
- 6.6.19 A second, much longer track (8), runs from the farm at Braeside of Lindores to the summit of Braeside Hill, as shown on the Ordnance Survey 1st Edition map (1855 & 56). The track is considered to be of negligible sensitivity and lesser historic environment interest.
- 6.6.20 A former quarry (7) lies in a flat improved pasture field, approximately 600m north of Braeside Mains farm (1). The quarry was probably used for the extraction of stone used in the building of farm structures and field walls in the immediate vicinity. The quarry is of negligible sensitivity and lesser historic environment interest.
- 6.6.21 The NMRS and SMR record that the cropmarks of a possible double-ditched enclosure (13) are visible on aerial photographs from 1994 at the northeast corner of a rough pasture field immediately south of Braeside of Lindores. The date and function of the possible enclosure are unknown and the site is of unknown sensitivity. However, on morphological grounds and in comparison with other similar sites it is likely that the site is of prehistoric date.

Assessment of archaeological potential of the proposed development area as a whole

- 6.6.22 The proposed development site is situated on to the summit of Silver and Lindores Hills at between 120 – 160 AOD. Today the land-use character of the proposed wind farm site is predominantly rough pasture farmland, with occasional areas of enclosed improved pasture at Braeside Mains (1).

CHAPTER SIX: CULTURAL HERITAGE

NEWBURGH COMMUNITY WIND FARM ENVIRONMENTAL STATEMENT

- 6.6.23 The NMRS records numerous cultural heritage sites within the surrounding area, principally concentrated in the fertile low lying arable land that surrounds the proposed development site. These cultural heritage sites include both settlement and burial remains which date from the Neolithic to the post-medieval period and indicate continuous settlement in this area.
- 6.6.24 A prominent multi-period site was present at Clatchard Craig (NMRS Ref no. NO21NW 18), around 1km to the west of the proposed wind farm site. The site no longer exists having been removed by quarrying, however excavations carried out in the 1950's and 60s revealed continuous settlement from the Neolithic to the early historic period. Several other prominent hill forts potentially of Iron Age date are also present in the surrounding landscape, for instance at Kinnaird Hill (NMRS Ref: NO21NE 41), just east of the proposed wind farm.
- 6.6.25 Other potential prehistoric features are concentrated in the flat valley just south of Braeside Lindores; a number of cropmark enclosure sites (NMRS Ref no. NO21NE 29, 30, 40, 60 and 61), have been recorded on vertical aerial photographs. At least one of these enclosures is recorded as double ditched ((NO 21NE 60) and may have been a habitation site, while others may be prehistoric or later settlements sites. In addition, prehistoric burial remains, including a cist burial and a possible urn field have been uncovered just west of the proposed development: at Clatchard Craigs (Miller 1836) during the 1800's and at Denmyline (NMRS Ref: NO21NW 17) in the 1950's.
- 6.6.26 The area around Newburgh, approximately 1km to the west of the proposed wind farm and on the Forth of Tay coastline, has been settled from the early medieval period onwards. In 1191 a Tironensian Benedictine Abbey was founded just east of Newburgh and this remained a religious settlement until the 1600. Remains of a further possible ecclesial centre was reputedly discovered during quarrying works in the 1950s at Denmylne (NMRS Ref no. NO21NW17). Since the 1990's several finds of medieval artefacts have been uncovered close to the abbey, at Parkhill and Denmyle, which lie 500m to the west of the proposed windfarm. These finds include a flat bronze stud possible from a bible / psalter, a socketed hammer and two finger rings (NMRS Ref nos: NO21NE 85, NO21NW 22 & 153).
- 6.6.27 Further evidence, for settlement in the low lying valleys surrounding Lindores Hill, is gained from historical maps from the 17th century onwards. These maps show settlements at Denmyle, Kinnaird, Old Lindores and Parkhill, and remains of some of these late medieval / post-medieval settlements still survive in the form of tower houses at Denmlye and Old Lindores.
- 6.6.28 The hill became a focal point in the local landscape in 1980, when a depiction of a bear and staff, known as the Newburgh Bear was cut into the north facing slope of Park Hill, just north of the proposed development site, as part of a community project. The bear is a depiction of a stone called 'the bear stone' which was originally set into the abbot's residence at Lindores Abbey. The bear is a prominent feature in the surrounding landscape and is particularly prominent in views of the hill when travelling out of Newburgh along the coastal road to the east.
- 6.6.29 Although Lindores Hill is a prominent feature within the surrounding landscape, there is little evidence to suggest that it was the site of any substantial settlement or activity. Historical maps depict the hill as unmodified open moorland (Roy 1747-55) and this is reflected in the use of the area today as rough pasture. Improved pasture areas surrounding Silver and Lindores Hills are depicted on the Ordnance Survey 1st Edition map (1855 & 56) although these areas are not enclosed at this time, and the regular field patterns at Park Hill and Braeside Mains are only formalised in the late 19th century.
- 6.6.30 Relict rig of potentially 18th century date or earlier (9) still survives at the summit of Silver Hill along with possible contemporary clearance cairns. However, no upstanding remains of prehistoric date or any substantial settlement remains were identified within rough pasture areas and this suggests that the upper slopes of the hill (higher

elevated areas) were never used for settlement purposes. In addition, areas of exposed bedrock were noted during the field survey, particularly at the summit of the hill, and this suggests that the topsoil, in these areas, is unlikely to be very deep.

- 6.6.31 Although the hill summit does not appear to have been used as a site for settlement (unlike other nearby hills that have forts and enclosures on their summits) the Fife Council Archaeologist considers that there is sufficient evidence, taking into consideration the numerous prehistoric sites in the surrounding area, for some potential for buried remains to survive within the area. The potential for yet undetected buried remains to survive within the area is therefore judged to be moderate. Given the limited land-take required by the various elements of the proposed development the probability of encountering sites of archaeological significance during the course of construction work is considered to be low.

Future Baseline

- 6.6.32 If the wind farm was not to proceed there would be no change to the baseline condition. The current pasture land-use would likely continue, limiting the disturbance to cultural heritage assets, and only natural decay would occur to the upstanding remains. There would be no change to the setting of external cultural heritage receptors.

6.7 EFFECTS AND MITIGATION

Assessment of Effects within the Proposed Development Area

Direct Effects

- 6.7.1 The layout of the development, including the positioning of the turbines, access tracks and other infrastructure elements has been arrived at through a series of iterative stages to develop the best layout within the context of all environmental and technical constraints. The layout on Figure 6.1 therefore embeds design based mitigation into the siting of the turbines as far as possible.
- 6.7.2 Any ground breaking activities associated with the construction of the proposed windfarm (such as those required for turbine bases and crane hardstandings, access tracks, cable routes, compounds, etc) have the potential to disturb or destroy features of cultural heritage interest. Other construction activities, such as vehicle movements, soil and overburden storage and landscaping also have the potential to cause direct, permanent and irreversible effects on the cultural heritage.
- 6.7.3 Using the criteria detailed in Tables 6.1 – 6.3 of this Chapter, Appendix 6.1 provides a summary assessment of the predicted effects on the cultural heritage sites and features identified by the study within the proposed development. These effects are discussed in more detail below.
- 6.7.4 A direct effect is predicted for track (5), the northern end of the track lying in an area designated for the temporary site compound. The track is considered to be of lesser importance and negligible sensitivity. Only a small section of the track, which survives as a slight hollow-way, would be affected by construction works and the predicted effect is considered to be of imperceptible magnitude and of negligible significance.
- 6.7.5 A direct effect is predicted for a track (8), farm access track, which would be crossed in several places by the proposed new access track for the proposed development and affected by the temporary site compound. The track which is considered to be of lesser importance and negligible sensitivity is depicted on the 1855 & 1856 Ordnance Survey 1st Edition map and is currently used as a rough field access track. The predicted effect on the track is considered to be of imperceptible magnitude and of negligible significance.
- 6.7.6 A direct effect is predicted for a small area of relict rig and furrow cultivation (9) which would be clipped by the proposed access track between Turbine 2 and Turbine 3. The

surviving rig and furrow is considered to be of local importance and of low sensitivity. The proposed access track would only affect the very northern edge of the surviving remains. The predicted effect is therefore considered to be of imperceptible magnitude and of negligible significance.

- 6.7.7 A direct effect is predicted for a small area of very poorly preserved rig and furrow cultivation (10b) which would be clipped by the proposed hardstanding for Turbine 3. The very much degraded rig and furrow remains are considered to be of lesser importance and negligible sensitivity. The proposed hardstanding area would only affect the very southeast edge of the rig and furrow remains. The predicted impact is considered to be of imperceptible magnitude and of negligible significance.

Uncertain Effects

- 6.7.8 In addition to the site specific predictions, stated above, ground-disturbance excavations associated with the construction of the proposed development could have an adverse effect on any unrecorded, buried archaeological remains present in affected areas. Taking into consideration the numerous prehistoric sites recorded in close proximity to the proposed development the Fife Council consider that there is some potential for yet undetected archaeological remains to survive as buried features within the area. However given the limited extent of the proposed ground disturbance generated by the construction of access tracks, cable routes, turbines bases, hardstanding areas, construction compound and substation, the likelihood of encountering remains of archaeological significance is considered to be low.

- 6.7.9 Mitigation through archaeological monitoring of ground works in specified areas (agreed in advance with the Fife Council Archaeologist) would offset the predicted effects through the identification and recording of any surviving remains prior to their loss; or other mitigation, such as preservation in situ of any important archaeological remains where required by the Council Archaeologist.

Decommissioning Effects

- 6.7.10 No significant impacts are predicted during the decommissioning of the wind farm, presuming that the same road infrastructure is used for the dismantling and removal of the built features of the proposed development.

Proposed Mitigation

- 6.7.11 Except where otherwise stated all mitigation works presented in the following paragraphs would take place prior to or during the construction of the proposed development. All works would be conducted by a professional archaeological organisation, and the scope of works would be detailed in a Written Scheme of Investigation (WSI). The WSI would make provision for appropriate post-excavation analyses and dissemination of the results of the mitigation works, as well as for archiving of the project materials and records. The WSI would be subject to the approval of the Fife Council Archaeologist.

Preservation in situ

- 6.7.12 Features that lie in close proximity to proposed development features would be avoided as far as practical to ensure their preservation in situ.
- Rig and furrow remains (9) would be visibly marked out to prevent accidental damage occurring to the remains during construction activities in the vicinity.
 - Other sites lie well clear of the proposed windfarm elements and would not require to be fenced off.

Watching Briefs

- 6.7.13 A watching brief would be carried out during any ground breaking required for the upgrade or widening of the southern end of the wind farm access track where it

passes a cropmark site (13).

- 6.7.14 Due to the large quantity of prehistoric sites recorded in close proximity to the proposed development the Fife Council Archaeologist has requested that all intrusive ground works be subject to archaeological monitoring through a pre-development evaluation or construction phase watching brief (see Table 6.8: Consultation Responses). This would apply to access tracks, crane hardstandings, turbine bases, compound and substation areas, and any borrow pit areas.

Post-Excavation

- 6.7.15 If significant discoveries are made during archaeological monitoring, and preservation in situ of any sites or features is not possible, provision would be made for the excavation, where necessary, of any archaeological remains encountered. This provision would indicate the consequent production of written reports on the findings, with post-excavation analyses and publications of the results of the works, where appropriate.

Construction Guidelines

- 6.7.16 Written Guidelines would be issued for use by all construction contractors, outlining the need to avoid causing unnecessary damage to known sites. That document would contain arrangements for calling upon retained professional support in the event that buried archaeological remains of potential archaeological interest (such as building remains, human remains, artefacts etc) should be discovered in areas not subject to archaeological monitoring. The guidance would make clear the legal responsibilities placed upon those who disturb artefacts or human remains.

Residual Effects

- 6.7.17 The completion of the programme of archaeological mitigation works set out above would offset the loss of the archaeological resource that would occur as a result of the construction of the proposed development. Taking the mitigation into account, no significant residual effects are anticipated in relation to cultural heritage resources within the proposed development area.

6.8 OPERATIONAL EFFECTS

Predicted Effects

- 6.8.1 A list of those external receptors within 10km of the proposed development and predicted by the ZTV to have theoretical views of one or more turbines is provided in Appendix 6.2 and their locations are shown on Figure 6.2. Appendix 6.2 provides a summary assessment of the predicted impacts on a site-by-site basis.
- 6.8.2 The assessment of magnitude of impacts provided in Appendix 6.2 has been based on the analysis of the blade tip ZTV, taking into account the distance of the assessed site from the proposed development, the number of blade tips visible, and the present baseline setting of each site. The ZTV model is, however, a coarse predictive tool based on bare-earth surface topography and maximum blade-tip heights. It takes no account of obstructions to intervisibility caused by existing forestry and other vegetation or buildings and other man-made features. Therefore, professional judgement has been used to assess the significance of impacts.
- 6.8.3 Sites identified by Historic Scotland to be specifically assessed in the ES (Table 6.8) and those that are judged to have the most sensitive settings have been assessed in more detail using wireframe visualisations and photomontages (see Table 6.9 for Figure numbers).

Table 6.8: Cultural Heritage Photomontage and Wireframe Viewpoints

CHAPTER SIX: CULTURAL HERITAGE

NEWBURGH COMMUNITY WIND FARM ENVIRONMENTAL STATEMENT

Site name	Status	Photomontage / Wireframe No
Denmylne Castle (852 / 2592)	Scheduled Monument / Category A Listed	Cultural Heritage Viewpoint 1: Figure 6.3: Photomontage
Lindores Abbey (836 / 38479)	Scheduled Monument / Category A Listed	Cultural Heritage Viewpoint 2; Figure 6.4: Photomontage
View from Green Craig Hill Fort (Scheduled Monument Ref no:2446) orientated on Norman's Law (814) Fort	Scheduled Monument	Wireframe Figure 6.5
Errol Park	GDL	Landscape and Visual Chapter, Viewpoint 5, Figure 7.X

- 6.8.4 The proposed turbines would stand on the north-facing slope of Lindores Hill which is a prominent topographic feature in the Firth of Tay coastal landscape. The ZTV indicates that the proposed development will be most visible from the north along the Forth of Tay. The natural topography of hills would limit the views of the proposed development from the south to locations in the immediate area surrounding the development. Many of the key cultural heritage receptors in the area are located in open modern arable farmland with open views to the wider landscape.
- 6.8.5 One site requested to be assessed in the ES by Historic Scotland, Category A Listed Kinfauns Castle (11955), lies over 12km to the northwest of the proposed development and is predicted by the ZTV to have no visibility of the proposed wind turbines. The building is therefore not further assessed.
- 6.8.6 No significant impacts have been predicted on the setting of cultural heritage receptors in the wider landscape.

Scheduled Monuments

Denmylne Castle (852 / 2592)

- 6.8.7 The site consists of the ruins of a tower house and associated dovecot that are now situated in the grounds surrounding Denmylne Farm. Later farm buildings including a steading, farm house and other cottages are present enclosing the ruins on the northwest, north, east and southeast sides; while the A913 public road runs immediately past the castle on the southwest side. Later farm buildings to the south east of the castle are currently being modernised. The closely packed buildings surrounding the castle and other vegetation restrict views out to the wider landscape. Views of the upper floors of the castle, with Lindores Hill in the background, can however be gained from the public road and from arable fields present to the west and south.
- 6.8.8 The proposed wind turbines would lie around 1km to the northwest of the castle ruins and the ZTV indicates that only one turbine will be visible from the actual site. Views taking in the castle, from the west (Figure 6.3) would include two of the proposed turbines, one hub and one tip, above Lindores Hill and against the skyline. The castle ruins are tightly surrounded by later farm buildings and it stands in a very enclosed setting. The presence of the proposed development would not affect the immediate setting of the castle ruins and although the turbines will be visible in views of the

castle, from the west, they will not detract from an appreciation of the ruins nor understanding of the site as a whole. The effect is considered to be of low magnitude and of minor significance.

Lindores Abbey (836 / 38479) and Detached Wall Section (38480)

- 6.8.9 Lindores Abbey (836 / 38479, and a small connecting section of Category A Listed wall (38480)) was constructed in the 12th century and has been connected with many famous Scottish Kings and Statemen, including William Wallace, David II and Abbot Lawrence, one of the founders of St Andrews University. The ruins of the abbey are now poorly preserved and consist principally of the foundations of the Abbey Chapel, a fragment of medieval wall (38480) and a rounded arched gateway which stands complete. The abbey foundations and gateway (836 / 38479) are both scheduled and Category A Listed; these sit in an area of improved pasture grassland on the north side of the Newburgh to Flisk public road, and just east of Lindores Farm. The further section of medieval wall (38480), which is listed but not scheduled, stands in improved pasture surrounding the grounds of Parkhill House on the opposite side of the public road and isolated from the other abbey ruins. The abbey site lies just outside the eastern edge of Newburgh and around 50m from a modern housing estate on the outskirts of the town. Large modern barns, which form part of Lindores Farm, are also present immediately southwest of the Abbey Chapel ruins.
- 6.8.10 There are views out to the surrounding landscape from the abbey ruins and a photomontage (Figure 6.4) produced for the site indicates that all three of the proposed wind turbines would be visible on the summit of Lindores Hill from the abbey, above the Newburgh Bear just over 1km to the south. Although the proposed development would introduce a new built element into the landscape surrounding the abbey ruins, the development would not detract from the appreciation of the ruins or an understanding of their function. It is considered that the development would not have a significant effect on the site; the effect would be of low magnitude and of minor significance.

Ballinbreich Castle (844 / 9020)

- 6.8.11 The ruins of Ballinbreich Castle, a tower house, stand at the edge of a woodland shelter belt on the coast of the Firth of Tay and immediately south of the beach line. The main views from the castle ruins are concentrated out along the Firth of Tay coastline to the northeast and southwest. Open views from the castle ruins are also gained to the south across open flat arable fields taking in the Fife hills, including Lindores Hill on which the proposed wind turbines would stand. The modern farmstead of Ballinbreich Farm stands around 400m to the south of the site.
- 6.8.12 The current setting of the castle ruins is the Firth of Tay coastline and the improved farming landscape that it stands in. Although the proposed development would introduce a new element into the surrounding landscape the presence of the turbines, just over 2km from the site, would not detract from the appreciation of the castle ruins nor affect its immediate setting. It is considered that the development would have an effect of low magnitude and of minor significance on the setting of the site.

Abdie Old Kirk (825 / 4311)

- 6.8.13 The ruins of Abdie Old Kirk stand in the grounds of Abdie House and are surrounded by a small former graveyard. Abdie House stands around 200m to the SSW of the kirk remains and there are several outbuildings just outside the graveyard wall. A modern tennis court lies around 300m to the SSE of the site, although partially screened by a woodland shelterbelt. The kirk ruins and its graveyard are enclosed by a woodland shelterbelt. The Perth to Ladybank railway line passes the kirk around 300m on the east side.
- 6.8.14 The current setting of the kirk is the graveyard it sits in and the small designed

landscape that surrounds Abdie House that it forms part of. The proposed development would be around 2km to the north of the kirk. The construction of the proposed wind turbines would introduce a new element into the surrounding landscape and would be visible above the hill line in views from the kirk. It is, however, considered that the setting of the kirk would not be detrimentally affected by the proposed development. The effect would be of low magnitude and of minor significance.

Lindores Eelhouse (3545)

- 6.8.15 The remains of the eelhouse survive straddling an unnamed burn just over 1km to the southwest of the proposed development. The eelhouse, which is both scheduled and Category B Listed, was used to trap mature eels. It is situated at the edge of a flat improved arable field within a small area of woodland. The building has a much localized setting comprising the burn that it sits on and the surrounding enclosed woodland. Given the nature of the building, used to fish for eels, it is unlikely that there were any intentional long views out to the surrounding landscape from the structure. The presence of the proposed development, at over 1km from the site, would not adversely affect the setting of the eelhouse, the effect would be of imperceptible magnitude and negligible significance.

Abdie Church symbol stone (7883 / 2583)

- 6.8.16 The symbol stone is a class I Pictish stone, which is both scheduled and Category B Listed. The symbol stone originally stood on a local hill crest (Kaim Hill) but was removed in the 1850s from its original position and incorporated into a cottage wall at Lindores. During restoration of the wall in the 1970s the stone was removed and subsequently housed in the Mort House (outbuilding) at Abdie Church. The current setting of the stone, which no longer sits in its original position, does not contribute to its cultural heritage significance, and the proposed development would have no effect on the setting of the symbol stone.

Cowden Hill homestead, enclosure and roundhouses (11082)

- 6.8.17 The homestead comprises the remains of two stonewalled hut-circles surrounded by a sub-rectangular enclosure. The remains lie on the level summit of Cowden Hill in an area of rough pasture. There are open views in all directions out to the surrounding landscape, and the site is visible from the B937 public road from the east. Other potentially contemporary settlement sites are present on hill summits to the northeast, including Scheduled Norman's Law Fort (814), and to the northwest, Scheduled Castle Law Fort (2477) and there may be theoretical intervisibility between these sites and the settlement at Cowden Hill.
- 6.8.18 The current setting of the site is the rough pasture that it sits in and the improved pastureland and arable fields that it looks out over. The proposed turbines would be visible around 2.6 km to the north of the site. The turbines would not be visible in views to and from other possibly contemporary sites in the local landscape. The proposed development would introduce new elements into the surrounding landscape; however, they would not affect the setting of the site significantly. It is judged that a effect of low magnitude and of minor significance is predicted for the site.

Norman's Law Fort (814)

- 6.8.19 The remains of a prehistoric fort are situated on the north ridge of the summit of Norman's Law, in an area of rough conifer plantation. The site, which lies 4.6km from the proposed turbines, is a prominent feature in the surrounding landscape. The fort is one in a row of probable Iron Age forts that are spread along hill summits on the southern coastline of the Firth of Tay, including the scheduled Green Craig Hill fort (Scheduled Monument Ref no: 2446) and the non-designated Glenduckie Hill fort (NMRS Ref no: NO21NE 5). Such settlements tended to have long views out to the

surrounding landscape and intervisibility between them. Today, there is still intervisibility between the forts at Norman's Law and Green Craig Hill, which lies around 2km to the northeast.

- 6.8.20 The proposed development lies to the southwest of both forts and would not be visible in views from Norman's Law across to the fort at Green Craig Hill, to the southeast. In addition, the ZTV indicates that no views of the proposed wind turbines would be afforded from Green Craig Hill Fort, while a wireframe (Figure 6.5), representing the view from Green Carig Hill Fort orientated on Norman's Law, indicates that no turbines would be visible in views looking across from the fort to Norman's Law. The proposed development would therefore not affect the setting of Green Craig Hill Fort nor the intervisibility between the two sites. There would, however, be views of the proposed turbines from Norman's Law Fort, just over 4.5km to the southwest of the proposed development. The turbines would be visible on the skyline in panoramic views from Norman's Law. The proposed development would not detract from the appreciation of the fort nor would it materially change the landscape in which they fort lies. It is considered that the effect of the proposed development on the setting would be of low magnitude and of minor significance.

Ayton Chapel (9852 /2200)

- 6.8.21 The chapel, which is both scheduled and Category B Listed, comprises the ruins of a 17th century chapel standing at the centre of a flat improved arable field around 500m to the west of Ayton Farm and 600m north of the A913 public road. The chapel ruins are overgrown with trees and have a metal railing running around the outside. A small flat-topped knoll lies to the west of the chapel ruins and is the location of the former graveyard. The current setting of the site is the flat arable landscape that it sits in and which surrounds it. A natural rise in topography to the southeast would partially screen the proposed development from the site which would be around 3.8km distant. It is considered that the effect on the setting of the chapel would be of imperceptible magnitude and of negligible significance.

Other Scheduled Monuments

- 6.8.22 A further 67 Scheduled Monuments are predicted by the ZTV to have theoretical visibility of the proposed development. Forty-six of these are cropmark sites (see Appendix 6.2 for details), which lie in areas of flat modern farmland and each is a cropmark site with no upstanding remains visible on the ground. Their settings add little to their value or significance as an archaeological resource. All lie some distance from the proposed development and would retain their immediate farmland setting. It is therefore considered that the proposed development would have no more than an imperceptible magnitude effect and negligible significance on the settings of these sites.
- 6.8.23 Several other Scheduled Monuments including: three fort sites (2477, 3095, 7251); two burial cairns (796, 6928); the remains of a souterrain (811), three standing stones (1578, 7213, 7238); the remains of a motte (864); three symbol stones (822, 4017, 7883); four church ruins (5452, 5613, 5614, 5642); two castles (5580, 90140) and Abernethy Round Tower (90005), lie within 10km of the proposed development and predicted by the ZTV to have theoretical views of the proposed turbines. Two of these sites Abernethy Tower (90005) and Elcho Castle (90140) are Historic Scotland properties in care and promoted visitor sites. The majority of these sites lie over 7km from the proposed development and are sited in areas that have undergone some modification from their original setting; for instance, Green Hill burial cairn (796) lies in a conifer forestry plantation clearing. It is considered that the proposed wind turbines would have a minimal effect on the setting of these individual sites, the effects on each being of imperceptible magnitude and of negligible significance.

Listed Buildings

Megginch Castle (10963)

- 6.8.24 Built in the 15th century the Category A Listed castle lies on the flat plains of the Carse of Gowrie, on the north side of the Firth of Tay. The castle which comprises a 15th century tower house, that was extensively extended during the 17th and 19th centuries, stands at the centre of woodland and parkland policies that form the Megginch Castle GDL (discussed below). The castle was partially destroyed by fire in the late 1960s which necessitated the complete restoration of the 18th and 19th century sections of the house. The house is currently owned by the Barons of Strange, and is not open to the public. The front elevation of the house is orientated to the south with views out to the surrounding GDL parkland. Views from the back of the house, to the north, take in a large walled garden and stables that are also listed structures forming part of the Megginch Castle GDL and associated with the castle. Longer views out to the south from the house across the flat farmland of the Carse of Gowrie are screened by woodland shelterbelts that enclose the GDL and house. The proposed wind turbines would be over 6km to the SSE of the castle on the opposite side of the Firth of Tay, and it is considered that the development would have no significant effect on the setting of the castle nor would it affect the relationship of the castle with other associated buildings in the GDL.

Other Listed Buildings

- 6.8.25 The majority of listed buildings within the study area (principally Category B and Category C(S) Listed Buildings) and predicted to have theoretical views of the proposed turbines lie within the built up areas of Newburgh, Errol, St Madoes and Strathmiglo, and several other small villages or hamlets spread throughout the surrounding landscape. Many of the listed buildings in Newburgh, Strathmiglo and Errol form part of the Conservation Areas (discussed below). These buildings all lie in the enclosed setting of the towns and villages, and views from them are concentrated on the surrounding streets; none have extensive views out to the surrounding areas and the architectural qualities of each are appreciated at best at close quarters. In each case the predicted effect is assessed as being of imperceptible magnitude and of negligible significance.
- 6.8.26 The remaining listed buildings are principally historical country houses and farm buildings which sit in small designed landscapes. The setting of these various historic buildings is the group of related farm buildings and the designed landscapes of which they are an integral part. The presence of the proposed development would not materially affect those relationships and the character of the landscape in which they lie would remain unaffected. It is considered that the impacts on the settings of these buildings would be no more than of low magnitude and no more than of minor significance.

Inventory Gardens and Designed Landscapes

Errol Park (Photomontage)

- 6.8.27 Errol Park GDL lies around 4.4km north of the proposed development and on the opposite side of the Firth of Tay. The GDL, which includes several historic buildings, including Category A Listed Errol Park House (11598) and Stables (11599), is spread over an area approximately 1km square immediately east of Errol Village. The GDL takes in areas of both parkland and woodland all enclosed by a large stone wall which limits views into the GDL from the surrounding roads. The Errol estates originated in the 10th century when the land was gifted to the Hays of Errol by King Kenneth; the current GDL was formed during the 18th-19th century and the house that now stands was built in 1875-7. Today the estates are used for recreational activities. The Inventory of Gardens and Designed Landscapes in Scotland records that there are fine views to the south over the Firth of Tay from the terraces in front of the house (south side of house) and wide panoramic views of the Tay can be seen from the parkland.

- 6.8.28 The proposed development would lie to the south of the GDL and all three turbine hubs would be visible (Landscape and Visual Chapter: Viewpoint 5: Figure 7.X) in a small arc on the skyline across a landscape view of open arable farmland and the Firth of Tay. The proposed development would introduce a new built element to the distant wider landscape, which would be visible from the GDL, however it is considered that the proposed development would not affect the setting of the designed landscape as a whole, would not affect the relationship of the buildings and features cited within it, nor affect any specific vistas within the GDL. The effect on the setting of the GDL is of low magnitude and of minor significance.

Other Inventory Garden and Designed Landscapes

- 6.8.29 There are four further GDLs within 10km of the proposed development which are predicted to have intervisibility with the proposed turbines: Megginch Castle, Inchrya, Fingask Castle and Glendoick. All are located on the northern side of the Firth of Tay on the flat plains of the Carse of Gowrie. The closest, Megginch Castle, lies over 6km from the proposed development, and the furthest away, Fingask Castle, is around 9.5km away. All of the GDLs are woodland policies that surround large country houses and associated buildings, many of which are listed, and the GDLs form the setting for these buildings. All have varying views out across the Carse of Gowrie and the Firth of Tay, taking in the Fife Hills and would include the proposed wind turbines. Although the proposed turbines will be a new element in the wider landscape it is considered that their presence will not affect the setting of each GDL as a whole, will not affect the relationship between the buildings or other designed features/structures that are sited within the individual GDLs, nor effect any specific vistas or views within the GDLs. It is therefore judged that the effect of the proposed development on each GDL would be of no more than low magnitude and of minor significance.

Non-Inventory Designed Landscapes

- 6.8.30 Ten Non-Inventory Designed Landscapes (NIDL) are present within 10km of the proposed development and predicted by the ZTV to have visibility of the proposed turbines. Non-inventory designed landscapes do not have the same attributed level of importance as Inventory status Gardens / Designed landscapes, but appear in local authority lists and are therefore considered to be of regional importance and medium sensitivity. These NIDLs consist of small fragmentary designed landscapes including blocks of woodland and parkland which provide secluded settings for country houses and former castle/abbeys in the local area. None appear to have any specific views or vistas outwards to the surrounding landscape and views to the proposed development would be principally screened by woodland and intervening topography. The effect on the setting of the NIDLs is therefore considered to be of no more than low magnitude and of minor significance.

Conservation Areas

- 6.8.31 Five Conservation Areas within 10km of the proposed development, Newburgh, Strathmiglo, Abernethy, Errol and Rait are predicted by the ZTV to have theoretical visibility of the proposed wind turbines.
- 6.8.32 Newburgh Conservation Area lies just over 2km to the northwest of the proposed development. The Conservation Area includes approximately 100 listed buildings, the majority of which are residential buildings or shops along the main high street which is orientated east to west. The proposed development would be visible from the Conservation Area when travelling down the high street in an easterly direction, in the far distance and against the skyline. Turbines will also be specifically visible when exiting the Conservation Area along the A913 public road, and from the Newburgh to Flisk public road (coast road) standing along the top of Lindores Hill, against the skyline, and directly above the modern depiction of the Newburgh Bear and Staff on the north-facing slopes of Park Hill. Although the proposed development will introduce

a new built element to the landscape surrounding the Conservation Area it is considered that the three turbines would not result in a significant adverse effect on the setting of the Conservation Area as a whole. The effect is judged as being of low magnitude and of minor significance.

- 6.8.33 Strathmiglo Conservation Area is situated at the junction of the A912 and the A91 and clusters around the River Eden 8.9 km to the southwest of the proposed development. It includes around 25 Listed Buildings, of which the majority are small residential buildings concentrated along and looking out onto the main high street. The proposed development would be visible in the far distance from the Conservation Area, but the ZTV indicates that visibility of the proposed development will be limited to the south eastern edge of the Conservation Area. The turbines would not be a prominent element in the surrounding landscape and it is considered that the effect on the setting of the Conservation Area as a whole would be of imperceptible magnitude and of negligible significance.
- 6.8.34 Abernethy Conservation Area lies 7km to the west of the proposed development. The Conservation Area contains over 40 listed buildings, including Category A Abernethy Round Tower (90005). The majority of the listed buildings are small residential properties or shops spread along the main street, which is orientated roughly northeast to southwest. The town has a very enclosed setting, the majority of the buildings fronting onto the main street and with no intended long distant views. The ZTV indicates that the proposed development would only be visible from the northern edge of the Conservation Area, in the far distance; the majority of the Conservation Area having no predicted views. The turbines would not be a prominent element in the landscape immediately surrounding the Conservation Area and it is considered that the effect on the setting of the Conservation Area would be of imperceptible magnitude and of negligible significance.
- 6.8.35 Errol Conservation Area is clustered around the B958 immediately east of Errol Park Garden and Designed Landscape and just over 4km from the proposed development. The Conservation Area includes over 25 listed buildings the majority of which are spread along either side of the main street (B958). There are views from the Conservation Area southwards across a landscape of open arable farmland and the Firth of Tay. The proposed development would introduce a new built element to the wider landscape, which would be visible from the Conservation Area. It is however considered that the proposed development would not affect the setting of the Conservation Area as a whole and the effect on its setting is judged to be of low magnitude and minor significance.
- 6.8.36 Rait Conservation Area lies around 9km to the northwest of the proposed development. The Conservation Area comprises a small enclosed village that includes nine listed buildings. The listed buildings are principally small residential properties which are clustered around the main street (West End) of the village. There will be long distant views to the proposed development, particularly from the southern edge of the Conservation Area. However, the turbines will not be a prominent element in the landscape immediately surrounding the Conservation Area and will not affect its setting. It is considered that the effect of the proposed development on the Conservation Area would be of imperceptible magnitude and negligible significance.

Residual Effects

- 6.8.37 There will be no significant effects on the setting of any key cultural heritage assets within the wider landscape; therefore the proposed development would not have a significant residual effect on the setting of any of these sites. All impacts on the settings of heritage assets that are predicted to have views of the proposed development will be temporary and ultimately reversible, lasting for the lifetime of the proposed development and removed by its decommissioning.

6.9 SUMMARY

- 6.9.1 A desk-based assessment and reconnaissance field survey have been carried out for the proposed development. The assessment has been informed by comments and data supplied by Historic Scotland and Fife Council Archaeologist.
- 6.9.2 Thirteen sites of cultural heritage interest have been identified within the proposed development area. The majority of features recorded are associated with medieval or post-medieval rural settlement and agrarian activity, and are judged to be of no more than low sensitivity and local historical environment interest. One however (13) is a cropmark site of possible prehistoric date.
- 6.9.3 An assessment of the known cultural heritage resource of the surrounding area indicates that there has been continuous settlement within the surrounding area from prehistory to the present, however this has mostly concentrated within the low lying fertile valley bottoms and along the Firth of Tay Coastline. Although the hill summit does not appear to have been used as a site for settlement the Fife Council Archaeologist considers that there is sufficient evidence, taking into consideration the numerous prehistoric sites in the surrounding area, for some potential for buried remains to survive within the area. The potential for yet undetected buried remains to survive within the area is therefore judged to be moderate. However, given the limited land-take required by the various elements of the proposed development the probability of encountering sites of archaeological significance during the course of construction work is considered to be low.
- 6.9.4 Direct effects have been predicted on four sites, two tracks (5, 8) and two areas of relict rig and furrow (9, 10b) and the effects on these sites are of no more than negligible significance.
- 6.9.5 Seventy-six Scheduled Monuments (of which six are also Category A Listed Buildings and seven Category B Listed), 15 additional Category A Listed Buildings; 128 additional Category B Listed Buildings; five Garden and Designed Landscapes, and five Conservation Areas within 10km of the proposed development, and 134 Category C(S) Listed Buildings and ten Non-Inventory Designed landscapes within 5km of the proposed development are all predicted by the ZTV to have theoretical intervisibility of the proposed wind turbines. In no case would the setting of these receptors be likely to be affected significantly by the construction and operation of the proposed development.
- 6.9.6 Mitigation measures have been proposed, where appropriate, to offset the predicted negative effects arising from the proposed development. Given the large quantity of recorded prehistoric sites in the landscape surrounding the proposed development the Fife Council Archaeologist has requested that all intrusive ground works be subject to archaeological monitoring through either a pre-development evaluation or a watching brief.

6.10 BIBLIOGRAPHY

- Ainslie, J (1775) Counties of Fife and Kinross with the Rivers Forth and Tay
- Anon 1791-99'Parish of Abdie' in the Statistical Account of Scotland, vol.14 p.115-124
- Greenwood, C & Forrest, W (1828) Map of the counties of Fife and Kinross
- IfA 2009 Standard and Guidance for Archaeological Desk-based Assessment. Institute for Archaeologists.
- IfA 2010 By-Laws: Code of Conduct. Institute for Archaeologists.
- Miller, L. 1836'Parish of Abdie' in the New Statistical Account, vol.9 p.47-55

CHAPTER SIX: CULTURAL HERITAGE

NEWBURGH COMMUNITY WIND FARM ENVIRONMENTAL STATEMENT

Ordnance Survey (1855) Fife and Kinross Sheet 4 Six inches to one mile

Ordnance Survey (1855) Fife and Kinross Sheet 5 Six inches to one mile

Ordnance Survey (1856) Fife and Kinross Sheet 9 Six inches to one mile

Ordnance Survey (1855) Fife and Kinross Sheet 10 Six inches to one mile

Roy, W (1747-55) Military Survey of Scotland,

Thomson, J (1827) Fife with Kinross shire

Aerial Photographs

Sortie	Frames	Year	Scale	Library Ref
106G/UK/0027	3176-3180 4049 – 4051	1946	1:10,000	B_0094
F22 540_1395	0305 – 0312	1954	1:10,000	B-0385
F21 540_1395	0305 – 0312	1954	1:10,000	B_0385
F21 82_1103	0190 – 0195	1955	1:10,000	B_0404
OS/69/350	249 – 250	1969	1:7,500	OS_69_350
OS/77/117	191 – 192 240 – 243	1969	1:7,500	OS_77_117

CHAPTER SIX: CULTURAL HERITAGE

NEWBURGH COMMUNITY WIND FARM ENVIRONMENTAL STATEMENT

APPENDIX 6.1: CULTURAL HERITAGE SITES WITHIN THE PROPOSED DEVELOPMENT AREA

Site no	Site name and type	Easting	Northing	Source	Site description	Sensitivity
1	Braeside Mains, farmstead	326014	717597	Historical maps; Field survey	<p>A farmstead, annotated as 'Newland Doors', is depicted on Ainslie's map (1775), on the southern slopes of Lindores Hill. A farmstead, in the same place, is also shown on Thomson's map (1827) and Greenwood & Forrest's map (1828) now annotated as 'Mains'. On the Ordnance Survey 1st Edition map (1856) the farmstead is shown as a rectangular steading, an associated farmhouse and four enclosures, annotated as 'Mains of Lindores'; the same farmstead is depicted on the Ordnance Survey 2nd Edition map (1898).</p> <p>Today the farmstead is known as Braeside Mains and has been converted into private residences. Although the layout of the farm has changed over time, several of the buildings still relate to structures shown on the Ordnance Survey 1st Edition map.</p>	Low
2	Former building and enclosure	326011	717688	Historical maps; Field survey	<p>A small roofed building within an enclosure is depicted on the Ordnance Survey 1st Edition map (1855). The roofed building and enclosure are also depicted on the Ordnance Survey 2nd Edition map (1898).</p> <p>Field survey found no visible trace of a building or enclosure at this location, on a steep south facing slope. A modern farm track now runs across the site of the former building and enclosure.</p>	Unknown (low)
3	Former well	325693	717589	Historical maps	<p>A well is depicted on the Ordnance Survey 1st Edition map (1856) just west of Mains of Lindores farm (now known as Braeside Mains).</p> <p>No surface remains of the well were identified during the field survey.</p>	Negligible
4	Former building and enclosure	325683	717930	Historical maps; Field survey	<p>A small roofed, rectangular building and attached enclosure are depicted on the Ordnance Survey 1st Edition (1855) and on the Ordnance Survey 2nd Edition (1898) maps. The enclosure is shown on the 2001 Ordnance Survey map, annotated as 'sheepfold', but the building is not depicted.</p> <p>The remains of the building and enclosure were identified during the field</p>	Negligible

CHAPTER SIX: CULTURAL HERITAGE

NEWBURGH COMMUNITY WIND FARM ENVIRONMENTAL STATEMENT

Site no	Site name and type	Easting	Northing	Source	Site description	Sensitivity
					survey. All that survives of the building are the two gable ends which survive to a height of approximately 3m. A rectangular enclosure, measuring approximately 14m by 11m survives to the SW of the building remains. The enclosure is defined by a mortared stone wall, 2m high, which incorporates the gable ends of the building. Several modern horse jumps, formed from rows of tyres and wooden posts, have been built into the enclosure wall.	
5	Track	325686	717878	Field survey	Field survey recorded a short section of track, 50m long and aligned NW to SE, just to the SW of the building and enclosure (4). The track, preserved as a slight hollow-way, is 2m wide, 0.5m deep and cuts through a small hillock. The track peters out at both ends in areas of rough pasture.	Negligible
6	Clearance Cairn	325787	718118	Field survey	Field survey recorded a large oval clearance cairn, measuring approximately 20m by 15m, and 3m high. The clearance spread is partially grassed over and a tree is growing out of the NE edge.	Low
7	Former Quarry	326084	718165	Field survey	Field survey recorded a small, disused quarry cut into a bedrock outcrop. It measures approximately 10m by 15m, and 2.5m deep.	Negligible
8	Track	325735	718082	Historical maps; Field survey	A track, running from the farm at Braeside of Lindores to the summit of Braeside Hill, is depicted on the Ordnance Survey 1st Edition map (1855 & 56). Only a small section of this track is still shown on the 2001 Ordnance Survey map, which depicts the route of a 'path' following the same alignment as the southern end of the track as shown on the Ordnance Survey 1st Edition map. The track still survives as a rough farm access track measuring 3m wide, running through an area of rough pasture. The track passes around the top of an area of relict rig and furrow cultivation (9) still surviving on the top of Silver Hill.	Negligible
9	Relict rig and furrow	32602	71848	Aerial photographs;	An area of rig and furrow cultivation is visible on aerial photographs dating from 1954 to 1977 and on modern aerial photographs.	Low

CHAPTER SIX: CULTURAL HERITAGE

NEWBURGH COMMUNITY WIND FARM ENVIRONMENTAL STATEMENT

Site no	Site name and type	Easting	Northing	Source	Site description	Sensitivity
	cultivation			Field survey	Field survey identified the remains of former rig and furrow cultivation spread across an area approximately 150 m sq just west of the summit of Silver Hill. The wavelength of this rig measures approximately 10m in width, and the rig survives to a height of 0.4-0.5m high. A later track (8), depicted on the Ordnance Survey 1st Edition map (1855 & 56), passes around the top of the rig remains (9).	
10	Relict rig and furrow cultivation	325919 & 326065	718564 & 718650	Field survey	Two areas of very faint rig and furrow cultivation on different alignments (see below for details) were visible close to the summit of Silver Hill during the field survey. The rig and furrow remains were extremely poorly preserved and did not survive as upstanding remains. 10a - (NO 25919 18564 (centred)) Small area of rig and furrow measuring approximately 200m long by 50m wide. The rig is aligned ENE to WSW. The rig was very faint and a could only be distinguished from a distance 10b - (NO 26065 18650 (centred)) Small area of rig and furrow measuring approximately 100m square. The rig is aligned NE to SW. The rig was very faint and could only be distinguished from a distance.	Negligible
11	Clearance cairns (possible)	325849	718302	Field survey	Field survey recorded three distinct grass covered stony mounds in an area of rough pasture just W of the former rig and furrow cultivation (8, 9). The exact character and purpose of these is unknown; however given their location close to the former rig and furrow cultivation it is probable that they are field clearance cairns. 11a - (NO 25837 18516) 6m in diameter and 1m high. 11b - (NO 25849 18302) 7m long by 6m wide and 1.5m high. 11c - (NO 25871 18506) 7m long by 5m wide and 0.5m high.	Low
12	Clearance cairn (possible)	325598	718357	Field survey	Field survey recorded a possible grass-covered field clearance cairn at the edge of a rough pasture field. The cairn measures 6m by 5m, and 1m high.	Low

CHAPTER SIX: CULTURAL HERITAGE

NEWBURGH COMMUNITY WIND FARM ENVIRONMENTAL STATEMENT

Site no	Site name and type	Easting	Northing	Source	Site description	Sensitivity
13	Cropmark site; possible double-ditched enclosure	325792	717343	NMRS/SMR	The NMRS and SMR record that a cropmark of a possible double-ditched enclosure is visible on aerial photographs from 1994 in the NE corner of a field immediately S of Braeside of Lindores.	Unknown (low)

APPENDIX 6.2: Cultural Heritage Sites including Scheduled Monuments, Category A and B Listed Buildings, GDLs and Conservation Areas within 10km of the proposed development which are predicted by the ZTV to have intervisibility of the wind turbines

Site no	Site Name	Status	Easting	Northing	No of turbines visible	Distance to nearest turbine (km)	Sensitivity of Receptor	Setting	Contribution of Setting	Sensitivity of setting	Effect Magnitude	Significance of Predicted Effects
796	Green Hill, Cairn	SM	334452	722859	2	9.3	High	Situated on the summit of Green Hill within a small clearing in conifer forestry plantation. Forestry plantation limits views to surrounding area.	Negligible	Low	Imperceptible	Negligible
811	Kinloch, Souterrain 850m SSW of Kinloch House	SM	327841	711512	1	6.9	High	Cropmark site in modern arable farmland.	Negligible	Low	Imperceptible	Negligible
814	Norman's Law, Fort	SM	330526	720173	3	4.6	High	Situated on a N ridge of the summit of Normans Law in an area of rough pasture. Hill surrounded by flat improved farmland and modern conifer plantation. Open views to surrounding landscape, particularly towards Firth of Tay. Fort prominent feature from the Firth coastline. Intervisibility between the fort and Green Craig fort around 2km to the NW.	Moderate	High	Low	Minor
822	Mugdrum House, Cross Shaft	SM	322531	718194	3	3.1	High	Situated in woodland that surrounds the policies of Mugdrum House (15561). Enclosed woodland setting.	Low	Medium (localized)	Imperceptible	Negligible
825 / 4311	Abdie Old Kirk	SM / Category A Listed	325979	716349	3	1.8	High	Ruins of church surrounded by small graveyard, forming part of the grounds of Abdie House which is present around 200m to the SSW. Several outbuildings are just outside the graveyard wall. A modern tennis court is present around 300m to the SSE, although partially screened by a woodland shelterbelt. The Perth to Ladybank railway line passes the site on the E side.	Moderate	High	Low	Minor
836	Lindores Abbey	SM / Category A Listed	324377	718474	3	1.3	High	The poorly preserved ruins of Lindores Abbey are situated on either side of the Newburgh to Flisk road and immediately east of Lindores Farm on the eastern edge of Newburgh. The ruins of the abbey consist principally of the foundations of the Abbey Church and other fragments of medieval walls (see 38480), although a rounded arched gateway at the southwest corner of the Abbey ruins is upstanding and complete. Large modern barns forming part of Lindores Farm are present immediately south-west of the ruins and partially enclose the site. The site is around 50m from a modern housing estate on the edge of Newburgh. There are views out to the surrounding area from the site which include views to Lindores Hill and the proposed windfarm.	Low	Medium	Low	Minor
844 / 9020	Ballinbreich Castle	SM / Category A Listed	327181	720488	3	2.1	High	Ruins of tower house situated on edge of flat improved arable field and within edge of	Moderate	High	Low	Minor

CHAPTER SIX: CULTURAL HERITAGE

NEWBURGH COMMUNITY WIND FARM ENVIRONMENTAL STATEMENT

Site no	Site Name	Status	Easting	Northing	No of turbines visible	Distance to nearest turbine (km)	Sensitivity of Receptor	Setting	Contribution of Setting	Sensitivity of setting	Effect Magnitude	Significance of Predicted Effects
								woodland shelterbelt. At coast of Firth of Tay and only around 20m from beach. Main views from site concentrated out along the coastline to NE and SW.				
852 / 2592	Denmylne Castle 1600m SE of Newburgh	SM / category A Listed	324932	717549	1	0.9	High	Ruins of tower house and associated dovecot now situated in the grounds of Denmylne Farm. Surrounded by farm buildings on the N and E sides. A public road (A913) runs immediately past the castle on the SW side. Enclosed farm setting surrounded by open flat improved farmland. Views of castle gained from SW.	Moderate	High	Low	Minor
864	Inchrye, Motte	SM	326966	716558	3	2.0	High	Site lies in an area of woodland on the NW shore of Lindores Loch. Separated from the loch by a modern public road (B937).	Moderate	High	Imperceptible	Negligible
1578	St Madoes Standing Stones 200m WNW of Pitfour Castle	SM	319711	720991	3	6.6	High	Situated immediately E of St Madoes School and standing in the playground of the school. Surrounded by modern housing estate.	Negligible	Low	Imperceptible	Negligible
2275	Carpow, Roman Fortress	SM	320791	717771	3	4.9	High	Cropmark site in modern arable farmland.	Negligible	Low (localized)	Imperceptible	Negligible
2477	Castle Law, Fort, Abernethy	SM	318289	715333	2	7.9	High	Situated on the E ridge of Castle Law summit in an area of rough pasture moorland. Open views out to surrounding landscape. Overlooking Abernethy which lies around 1km to the NE and the confluence of the River Earn and Tay approximately 2km to the NE. Partially excavated in the late 1890's and forms the type site for Childe's Abernethy Complex of camps with timber-land ramparts.	Moderate	High	Imperceptible	Negligible
3095	Evelick, Fort WSW of	SM	319933	725723	3	9.4	High	Situated on a SE crest of Pole Hill around 500m to the SE of Pole Hill Cairn (6928). Open views out to surrounding landscape taking in the flat improved arable land that runs along the coast of the Firth of Tay and the Firth itself. Distance views to the south side of the Firth.	High	High	Imperceptible	Negligible
3545 / 2582	Lindores, Eelhouse 400m NE of Abdie Parish Church	SM / Category B Listed	325881	716993	3	1.1	High	Situated at unnamed burn within a small woodland shelterbelt. Surrounded by flat improved arable fields.	High	High (very localized)	Imperceptible	Negligible
4017	Strathmiglo Churchyard, Symbol Stone	SM	321673	710224	3	8.8	High	Situated in grounds of Parish Church just SW of the church.	High	High (localized)	Imperceptible	Negligible
5452 / 19820	Rhynd, Old Parish Church 250m SW of Easter Rhynd	SM / Category B Listed	318263	718547	3	7.4	High	Ruins of church surrounded by small graveyard. Situated in an area of open improved arable fields at the confluence of the River Earn and River Tay. Just west of Easter Rhynd Farm and a series of large modern farm barns.	Moderate	High	Imperceptible	Negligible
5580 / 10985	Balthayock Castle	SM / Category B Listed	317414	722957	3	9.6	High	Situated in the grounds of former Balthayock House overlooking a steep ravine. Surrounded by woodland. Stands around 50m SW of a new	Moderate	High	Imperceptible	Negligible

CHAPTER SIX: CULTURAL HERITAGE

NEWBURGH COMMUNITY WIND FARM ENVIRONMENTAL STATEMENT

Site no	Site Name	Status	Easting	Northing	No of turbines visible	Distance to nearest turbine (km)	Sensitivity of Receptor	Setting	Contribution of Setting	Sensitivity of setting	Effect Magnitude	Significance of Predicted Effects
								building that has been constructed in the former position of Balthayock House.				
5613	Rait, Old Parish Church	SM	322749	726853	3	8.9	High	Ruins of church surrounded by remains of small graveyard in an area of woodland on the E edge of Raith Village.	Moderate	High	Imperceptible	Negligible
5614	West-Town Church, 350m NNW of Westown	SM	324929	727468	3	8.9	High	Ruins of church surrounded by small walled enclosure on the edge of flat arable field. Public road runs immediately past the site on the E side. Open views from site to surrounding open farmland.	Moderate	High	Imperceptible	Negligible
5642 / 13796	Kinfauns Church	SM / Category B Listed	316667	722265	2	9.9	High	Ruins of church situated in small graveyard at the edge of Kinfauns Hamlet. Stands around 100m E of the current parish church (11995). Surrounded by flat improved arable fields.	Moderate	High	Imperceptible	Negligible
6148	Lathrisk House, Settlement 300m WNW of	SM	327084	708578	2	9.6	High	Cropmark site in modern arable farmland.	Negligible	Low (localized)	Imperceptible	Negligible
6748	Shiells, Henge 850m N of	SM	328146	709870	2	8.6	High	Cropmark site in modern arable farmland.	Negligible	Low (localized)	Imperceptible	Negligible
6749	Shiells, Ring-Ditches 500m NW & 600m NNW of	SM	327892	709434	3	9.0	High	Cropmark site in modern arable farmland.	Negligible	Low (localized)	Imperceptible	Negligible
6876	Shiells, Timber Hall 700m NW of	SM	327779	709536	2	8.8	High	Cropmark site in modern arable farmland.	Negligible	Low (localized)	Imperceptible	Negligible
6928	Pole Hill, Cairn	SM	319555	726060	3	9.9	High	Situated at summit of Pole Hill in an area of rough pasture moorland. Around 500m to the NW of Evelick Fort (3095). Overlooking flat improved arable fields and the coastline of the Firth of Tay. Distant views across to the southern side of the Firth.	High	High	Imperceptible	Negligible
71791	Drumtenant, Enclosures & Unenclosed Settlement 380m WNW of	SM	329464	709321	3	9.6	High	Cropmark site in modern arable farmland.	Negligible	Low (localized)	Imperceptible	Negligible
7192	Drumtenant, Enclosures & Unenclosed Settlement 250m N of	SM	329732	709408	3	9.6	High	Cropmark site in modern arable farmland.	Negligible	Low (localized)	Imperceptible	Negligible
7197	Kilspindie, Unenclosed Settlement N of Mill House	SM	322100	725817	3	8.2	High	Cropmark site in modern arable farmland.	Negligible	Low (localized)	Imperceptible	Negligible
7199	South Inchmichael, Unenclosed Settlement N of	SM	324844	725327	3	6.8	High	Cropmark site in modern arable farmland.	Negligible	Low (localized)	Imperceptible	Negligible
7201	Rait, Souterrains 130m & Ring-Ditch 170m S of	SM	322675	726651	3	8.7	High	Cropmark site in modern arable farmland.	Negligible	Low (localized)	Imperceptible	Negligible
7204	Middlebank, Unenclosed Settlement NE of	SM	325910	727484	3	8.8	High	Cropmark site in modern arable farmland.	Negligible	Low (localized)	Imperceptible	Negligible
7208	Middlebank, Enclosure 300m NW of	SM	325422	727515	3	8.9	High	Cropmark site in modern arable farmland.	Negligible	Low (localized)	Imperceptible	Negligible
7209	Powgavie, Enclosure 250m SSW of	SM	328709	725710	3	7.5	High	Cropmark site in modern arable farmland.	Negligible	Low (localized)	Imperceptible	Negligible
7213	Fingask Castle, Standing Stone	SM	322934	727162	3	9.1	High	Standing in an area of rough pasture on the edge	Moderate	High	Imperceptible	Negligible

CHAPTER SIX: CULTURAL HERITAGE

NEWBURGH COMMUNITY WIND FARM ENVIRONMENTAL STATEMENT

Site no	Site Name	Status	Easting	Northing	No of turbines visible	Distance to nearest turbine (km)	Sensitivity of Receptor	Setting	Contribution of Setting	Sensitivity of setting	Effect Magnitude	Significance of Predicted Effects
	320m SSE of							of a improved arable field and just SW of a large walled garden. Open views from stone to surrounding flat arable landscape and over to Rait Village present around 500m to the WSW.				
7214	Rait, Souterrain 400m NE of	SM	323032	727134	3	9.0	High	Cropmark site in modern arable farmland.	Negligible	Low (localized)	Imperceptible	Negligible
7217	Mains of Murie, Enclosure 280m W of	SM	322984	721956	3	4.5	High	Cropmark site in modern arable farmland.	Negligible	Low (localized)	Imperceptible	Negligible
7218	Mains of Murie, Unenclosed Settlement NW of	SM	323189	722084	3	4.5	High	Cropmark site in modern arable farmland.	Negligible	Low (localized)	Imperceptible	Negligible
7219	Pitroddie Farm, Souterrain & Unenclosed Settlement E of	SM	321758	725224	3	7.9	High	Cropmark site in modern arable farmland.	Negligible	Low (localized)	Imperceptible	Negligible
7220	Pitroddie Farm, Souterrain and Unenclosed Settlement 250m SE of	SM	321700	724962	3	7.7	High	Cropmark site in modern arable farmland.	Negligible	Low (localized)	Imperceptible	Negligible
7221	Nether Durdie, Souterrain, Settlement and Enclosure 550m ENE of	SM	321797	724819	3	7.6	High	Cropmark site in modern arable farmland.	Negligible	Low (localized)	Imperceptible	Negligible
7222	Glendoick, Souterrains 670m WSW of	SM	320268	722439	3	6.9	High	Cropmark site in modern arable farmland.	Negligible	Low (localized)	Imperceptible	Negligible
7223	Glendoick, Souterrain 660m W of	SM	320307	722612	3	6.9	High	Cropmark site in modern arable farmland.	Negligible	Low (localized)	Imperceptible	Negligible
7224	Inchcoonans, Ring-Ditch 200m NW of	SM	323625	723788	3	5.7	High	Cropmark site in modern arable farmland.	Negligible	Low (localized)	Imperceptible	Negligible
7225	Over Durdie, Fort 550m ENE of	SM	320976	724947	3	8.1	High	Cropmark site in modern arable farmland.	Negligible	Low (localized)	Imperceptible	Negligible
7226	Loanfoot, Ring-Ditch 370m SSW of	SM	322983	722671	3	5.1	High	Cropmark site in modern arable farmland.	Negligible	Low (localized)	Imperceptible	Negligible
7227	Mains of Errol, Ring-Ditch 450m ESE of	SM	324465	721769	3	3.6	High	Cropmark site in modern arable farmland.	Negligible	Low (localized)	Imperceptible	Negligible
7228	Clashbenny, Unenclosed Settlement 750m SW of	SM	321483	720447	3	4.8	High	Cropmark site in modern arable farmland.	Negligible	Low (localized)	Imperceptible	Negligible
7229	Mains of Murie, Ring-Ditch 90m E of	SM	323390	721979	3	4.3	High	Cropmark site in modern arable farmland.	Negligible	Low (localized)	Imperceptible	Negligible
7230	Clashbenny, Unenclosed Settlement 550m ENE of	SM	322307	721318	3	4.6	High	Cropmark site in modern arable farmland.	Negligible	Low (localized)	Imperceptible	Negligible
7231	Sandyhall, Unenclosed Settlement 480m ESE of	SM	321771	723292	3	6.3	High	Cropmark site in modern arable farmland.	Negligible	Low (localized)	Imperceptible	Negligible
7232	Gallowflat, Unenclosed Settlement 150m NE of	SM	321066	721165	3	5.5	High	Cropmark site in modern arable farmland.	Negligible	Low (localized)	Imperceptible	Negligible
7233	Tay Lodge, Ring-Ditch 310m WNW of	SM	325725	722420	3	3.8	High	Cropmark site in modern arable farmland.	Negligible	Low (localized)	Imperceptible	Negligible
7235	Priorland, Unenclosed Settlement 250m ENE of	SM	319062	720465	3	7.0	High	Cropmark site in modern arable farmland.	Negligible	Low (localized)	Imperceptible	Negligible
7236	Inchyra Farm, Unenclosed Settlement 500m NE of	SM	318926	720925	3	7.3	High	Cropmark site in modern arable farmland.	Negligible	Low (localized)	Imperceptible	Negligible
7237	Tofthill, Enclosed Settlement	SM	317630	721387	3	8.7	High	Cropmark site in modern arable farmland.	Negligible	Low	Imperceptible	Negligible

CHAPTER SIX: CULTURAL HERITAGE

NEWBURGH COMMUNITY WIND FARM ENVIRONMENTAL STATEMENT

Site no	Site Name	Status	Easting	Northing	No of turbines visible	Distance to nearest turbine (km)	Sensitivity of Receptor	Setting	Contribution of Setting	Sensitivity of setting	Effect Magnitude	Significance of Predicted Effects
	300m NNW of									(localized)		
7238	The Grey Stone, Standing Stone 450m NE of Clashbenny	SM	322177	721321	3	4.7	High	Situated on the crest of a low ridge towards the centre of a flat improved arable field. Open views to surrounding landscape particularly to the Firth of Tay to the S.	Moderate	Low	Imperceptible	Negligible
7240	Myreside, Souterrain 300m WSW of	SM	321810	724518	3	7.3	High	Cropmark site in modern arable farmland.	Negligible	Low (localized)	Imperceptible	Negligible
7246	Newton of Glencarse, Ring-Ditches 270m NE of	SM	319970	721922	3	6.8	High	Cropmark site in modern arable farmland.	Negligible	Low (localized)	Imperceptible	Negligible
7249	Newton of Glencarse, Unenclosed Settlement and Barrow N of	SM	319688	721959	3	7.1	High	Cropmark site in modern arable farmland.	Negligible	Low (localized)	Imperceptible	Negligible
7251	Rait Hill, Fort	SM	322991	726785	3	8.7	High	Situated in rough scrubland on the NE side of Rait Hill. Surrounded by woodland on S side which limits views out in this direction. An opencast quarry is present to the NNW. Situated just E of Rait Village.	Low	Medium	Imperceptible	Negligible
7283	Witch Knowe, Barrow 130m SW of Inchrya House	SM	318946	721195	3	7.4	High	Situated on a low rise about 110m SW of Inchrya House and within parkland that forms part of Inchrya GDL. Surrounded by trees.	Low	Medium	Imperceptible	Negligible
7292	Law Knowe, Motte 380m NNW of Mains of Murie	SM	323160	722386	3	4.8	High	Situated on the edge of a flat arable field within a small area of woodland. Covered in trees.	Low	Medium	Imperceptible	Negligible
7300 / 11641	Evelick Castle	SM / Category B Listed	320395	725949	3	9.3	High	Ruins of tower house situated at E edge of Evelick Farm. Large modern farm buildings present immediately to the W and NW. Surrounded by open farmland.	Moderate	High	Imperceptible	Negligible
7883/2583	Abdie Church, Symbol Stone 20m SW of	SM / Category B Listed	325960	716318	3	1.8	High	Pictish Symbol stone that use to stand on the crest of Kaim Hill was then moved and incorporated into a garden wall at Lindores. The stone was then subsequently moved in the 1970s to be housed in the Old Mort House at Abdie Churchyard.	Negligible	Low (very localized)	None	None
9449	Carey, Roman Temporary Camp and Enclosure, Abernethy	SM	317327	716477	3	8.5	High	Cropmark site in modern arable farmland.	Negligible	Low (localized)	Imperceptible	Negligible
9451	Wellfield, Enclosure 220m SSE of	SM	316971	715838	2	9.0	High	Cropmark site in modern arable farmland.	Negligible	Low (localized)	Imperceptible	Negligible
9452	Wellfield, Homestead 320m S of	SM	316930	715750	2	9.0	High	Cropmark site in modern arable farmland.	Negligible	Low (localized)	Imperceptible	Negligible
9453	Broadwell, Ring-Ditch House 140m NNW of	SM	317572	716050	2	8.3	High	Cropmark site in modern arable farmland.	Negligible	Low (localized)	Imperceptible	Negligible
9454	Netherton, Roundhouse 200m SSW of	SM	316341	716221	3	9.5	High	Cropmark site in modern arable farmland.	Negligible	Low (localized)	Imperceptible	Negligible
9455	Wallacetown, Moated Settlement 900m ESE of	SM	316278	718502	3	9.4	High	Cropmark site in modern arable farmland.	Negligible	Low (localized)	Imperceptible	Negligible
9460	Wester Clunie, Unenclosed Settlement 1000m ENE of	SM	321943	717872	3	3.7	High	Cropmark site in modern arable farmland.	Negligible	Low (localized)	Imperceptible	Negligible

CHAPTER SIX: CULTURAL HERITAGE

NEWBURGH COMMUNITY WIND FARM ENVIRONMENTAL STATEMENT

Site no	Site Name	Status	Easting	Northing	No of turbines visible	Distance to nearest turbine (km)	Sensitivity of Receptor	Setting	Contribution of Setting	Sensitivity of setting	Effect Magnitude	Significance of Predicted Effects
9673	Easter Clunie, Unenclosed Settlement 400m NW of	SM	321768	717728	3	3.9	High	Cropmark site in modern arable farmland.	Negligible	Low (localized)	Imperceptible	Negligible
9852 / 2200	Ayton Chapel, Dunbog	SM / Category B Listed	329987	718387	3	3.8	High	Remains of chapel situated in middle of flat arable field. The site is overgrown with trees and surrounded by a metal railing. Modern farmland setting.	Low	Medium	Imperceptible	Negligible
11082	Cowden Hill, Enclosure and Round-Houses	SM	326633	715327	3	2.9	High	Situated on the summit of Cowden Hill in an area of rough pasture. Open views out to surrounding area and prominent feature in the surrounding landscape.	Moderate	High	Low	Minor
90005 / 20875	Abernethy Round Tower and Pictish Symbol Stone	SM / Category A Listed	318990	716393	1	6.9	High	74ft tall tower house that now forms the Belfry for Abernethy Church. One of only two medieval round towers surviving in Scotland. Situated at centre of Abernethy. Enclosed village setting. Historic Scotland property in Care and promoted Visitor Site. Forms part of Abernethy Conservation Area.	Moderate	High	Imperceptible	Negligible
90140 / 17712	Elcho Castle	SM / Category A Listed	316406	721063	3	9.7	High	One of the best preserved 16th century tower houses in Scotland. Situated within a small designed landscape that contains associated structures and just N of Elcho Farm. The castle itself is surrounded by woodland on the N, E and S sides and a modern car park area has been constructed just to the SW. Historic Scotland Property in Care and promoted Visitor Site.	Moderate	High	Imperceptible	Negligible
10963	Megginch Castle and Garden Structures	Category A Listed	324195	724605	3	6.3	High	Situated at centre of Megginch Castle GDL. Surrounded by woodland and parkland policies. Associated structures including stables, walled gardens, lodges and chapel present in surrounding designed landscape. Main elevations of house orientated N and S. Woodland limits views to surrounding landscape.	High	High	Imperceptible	Negligible
10964	Megginch Castle, Stables, Dovecot, Screen Walls and Gatepiers	Category A Listed	324142	724670	3	6.4	High	Forms one of a number of listed buildings and associated structures that stand in Megginch Castle GDL. Situated just N of Megginch Castle. Surrounded by woodland and parkland policies.	High	High (localized)	Imperceptible	Negligible
10969	Megginch Castle, North Lodges and Gatepiers	Category A Listed	323481	724936	3	6.8	High	Forms one of a number of listed buildings and associated structures that stand in Megginch Castle GDL. Situated at N boundary and in an area of woodland. The public road (A90) runs past on its N side.	High	High (localized)	Imperceptible	Negligible
11589	Errol Village, North Bank Dykes, Errol (Church of Scotland) Parish Church including Boundary Walls and Gatepiers	Category A Listed	325269	722959	3	4.4	High	Situated in Errol. Enclosed village setting. Views concentrated on village.	Moderate	High	Low	Minor
11598	Errol Park House	Category A Listed	324761	722611	3	4.2	High	Situated in the Errol Park GDL and surrounded by woodland and parkland policies. The main	High	High	Low	Minor

CHAPTER SIX: CULTURAL HERITAGE

NEWBURGH COMMUNITY WIND FARM ENVIRONMENTAL STATEMENT

Site no	Site Name	Status	Easting	Northing	No of turbines visible	Distance to nearest turbine (km)	Sensitivity of Receptor	Setting	Contribution of Setting	Sensitivity of setting	Effect Magnitude	Significance of Predicted Effects
								elevations of the house are orientated NW and SE. Open views are afforded from the SE elevation across parkland and out to surrounding flat arable fields and the Firth of Tay.				
11599	Errol Park Stables	Category A Listed	324727	722659	3	4.3	High	Forms one of a number of listed buildings and associated structures that stand in Errol Park GDL. Stands at centre of GDL just N of Errol House. Surrounded by woodland and parkland policies.	High	High (localized)	Imperceptible	Negligible
11605	Seasyde House	Category A Listed	328364	724383	3	6.2	High	Country House situated on coast of Firth of Tay. Stands in small designed landscape that includes lodge house, coach house and walled garden. Open views across the Firth of Tay. A small airfield has been constructed immediately to the W of the house.	Moderate	High	Low	Minor
11966	Glendoick House	Category A Listed	320750	723605	3	7.3	High	Stands just below the escarpment of the Sidlaw Hills within the Glendoick GDL. Surrounded by woodland to the N. Open views out from the front elevation of the house across open parkland policies to the SE.	High	High	Low	Minor
13773	Inchmartine House	Category A Listed	326241	728076	3	9.4	High	Country house set in a small area of woodland and parkland policies. Stands around 200m to the SW of Boyne Farm and immediately W of a large steading complex probably associated with the house. The house itself is surrounded by woodland shelterbelts which limit views out. Entrance to house on SE side, while the main elevations of the house are orientated to the SW and NE.	Moderate	High	Imperceptible	Negligible
15565	Pitcairlie House	Category A Listed	323855	714992	3	3.6	High	Surrounded by fragmentary designed landscape and parkland. Has been converted to a hotel and several buildings within its ground turned into self-catering cottages. The front elevation of the house and main entrance looking towards the NE. Open views out to the surrounding flat improved arable fields.	Moderate	High	Low	Minor
17624	Inchrya House With Court of Offices At Rear	Category A Listed	319036	721311	3	7.3	High	Situated in Inchrya GDL comprising of woodland and parkland policies. The GDL includes several associated buildings and features. The house itself stands just S of Inchrya steading and another complex of large modern barns. A designed garden is layout to the north of the house. A large circular conifer shelterbelt is present around 50m to the S of the house screening the house entrance from and to the surrounding landscape.	High	High	Imperceptible	Negligible
17628	Pitfour Castle	Category A	319948	720880	3	6.3	High	Situated at the E edge of St Madoes Village.	Moderate	High	Imperceptible	Negligible

CHAPTER SIX: CULTURAL HERITAGE

NEWBURGH COMMUNITY WIND FARM ENVIRONMENTAL STATEMENT

Site no	Site Name	Status	Easting	Northing	No of turbines visible	Distance to nearest turbine (km)	Sensitivity of Receptor	Setting	Contribution of Setting	Sensitivity of setting	Effect Magnitude	Significance of Predicted Effects
		Listed						Surrounded by woodland. Immediately W of the house is a modern housing estate and St Madoes School Complex is present around 500m to the NW. Main elevations of house are orientated N and S; entrance to the house is on the N side.				
17714	Elcho Castle, Doo'cot	Category A Listed	316327	720918	3	9.7	High	Restored dovecot situated in a small area of woodland in the ground of Elcho Farm.	Moderate	High	Imperceptible	Negligible
19809	Cottown, Former School and Schoolhouse	Category A Listed	320575	721023	3	5.9	High	School house restored by the National Trust for Scotland but not open to public. Stands within the hamlet of Cottown between two residential properties.	Moderate	High	Imperceptible	Negligible
38480	Lindores Abbey, Detached Section South of Roadway	Category A Listed	324454	718380	3	1.2	High	A section of medieval wall standing in an improved pasture field immediately SW of ParkHill House and to the south side of the Newburgh to Flisk public road. The stretch of wall is isolated from the rest of the Abbey ruins and is not included in the Scheduled Monument area.	Low	Medium	Low	Minor
2146	Parbroath House	Category B Listed	332396	717727	3	6.3	Medium	Large farmhouse situated in open arable farmland. Immediately south of extensive modern farm complex. Main elevations of house orientated N and S.	Moderate	Medium (localized)	Imperceptible	Negligible
2148	Parbroath Castle Doocot	Category B Listed	332136	717774	3	6.0	Medium	Situated in flat improved arable field just west of modern farm and around 100m from the ruins of associated Parbroath Castle. Modern farmland setting.	Moderate	Medium (localized)	Imperceptible	Negligible
2181	Denmuir Doocot	Category B Listed	330306	718850	3	4.2	Medium	Enclosed farm setting. Surrounded by improved arable farmland.	Moderate	Medium (localized)	Imperceptible	Negligible
2197	Dunbog Parish Kirk	Category B Listed	328786	717973	3	2.7	Medium	Situated in open flat arable land on outskirts of village. Orientated NE to SW. Modern farmland setting.	Moderate	Medium	Imperceptible	Negligible
2201	Ayton Farmhouse	Category B Listed	330179	718305	3	4.0	Medium	Enclosed farm setting. Surrounded by improved arable farmland.	Moderate	Medium (localized)	Imperceptible	Negligible
2202	Denmuir Farm	Category B Listed	330265	718876	2	4.1	Medium	Enclosed farm setting. Surrounded by improved arable farmland.	Moderate	Medium (localized)	Imperceptible	Negligible
2450	Daft Mill and Farm Buildings	Category B Listed	331770	712178	1	8.5	Medium	Enclosed farm setting. Surrounded by improved arable farmland.	Moderate	High (localized)	Imperceptible	Negligible
2452	Easter Kilwhiss Farm Range of Steadings and Cart Shed	Category B Listed	327897	710729	1	7.7	Medium	Enclosed farm setting. Surrounded by improved arable farmland.	Moderate	High (localized)	Imperceptible	Negligible
2455	Kinloch House	Category B Listed	327989	712320	1	6.2	Medium	Country House set in woodland policies. Main elevations of house orientated to W and E. Surrounded by small designed landscape that contains associated structures.	High	High	Imperceptible	Negligible
2456	Kinloch Farmhouse and Offices	Category B Listed	328198	712142	1	6.5	Medium	Forms part of small designed landscape that surrounds Kinloch House. Association with house and other related structures within the house policies. Enclosed farm setting.	Moderate	Medium (localized)	Imperceptible	Negligible

CHAPTER SIX: CULTURAL HERITAGE

NEWBURGH COMMUNITY WIND FARM ENVIRONMENTAL STATEMENT

Site no	Site Name	Status	Easting	Northing	No of turbines visible	Distance to nearest turbine (km)	Sensitivity of Receptor	Setting	Contribution of Setting	Sensitivity of setting	Effect Magnitude	Significance of Predicted Effects
2492	Pitlair House	Category B Listed	331925	712064	1	8.7	Medium	Country house surrounded by improved arable land. Main elevations of house orientated NE to SW. Later houses built immediately south of building to form small housing estate.	Moderate	Medium	Imperceptible	Negligible
2558	Birkhill House	Category B Listed	333608	723383	2	8.8	Medium	Country House set in woodland and parkland policies. Main entrance to house on S side. Surrounded by designed landscape that contains associated structures.	High	High	Imperceptible	Negligible
2560	Abdie Parish Kirk	Category B Listed	325693	716671	3	1.4	Medium	Situated at the edge of a flat improved arable field within small walled enclosure, at T-junction. Surrounded by flat improved fields. Aligned roughly E to W, with main entrance at E end of building.	High	High	Imperceptible	Negligible
2561	Approach To Abdie Kirk Yard, Gate, 2 Flanking Buildings, and Kirkyard.	Category B Listed	325949	716342	3	1.8	Medium	Approach to Abdie Church remains at SW side of graveyard including the gate and flanking buildings. Views from approach concentrated on church remains to the NW and looking out over flat arable fields across to the slopes of Golden Hill to the SW.	High	High	Imperceptible	Negligible
2562	Abdie House, (Former Abdie Manse)	Category B Listed	325972	716283	3	1.9	Medium	Country house situated in small designed landscape that includes Former Abdie Church (825 / 4311). House surrounded by trees. A modern tennis court is present immediately east of the building. Entrance to the house is gained from the north, driveway overlooking the remains of Abdie Church and outbuildings.	Moderate	Medium	Imperceptible	Negligible
2563	Craigmill - Meal Mill	Category B Listed	324513	717910	2	1.2	Medium	Forms part of a former mill complex surrounded by other buildings. Enclosed setting. Large opencast quarry present on opposite side of public road (A913).	Moderate	Medium (localized)	Imperceptible	Negligible
2565	Parkhill Mill	Category B Listed	324524	718566	3	1.2	Medium	Former corn mill which has been rebuilt standing on W boundary of Park Hill Farm and immediately next to a large steading complex. To the N side of Abbey Road leading from Newburgh to Logie. A later access road to treatment works now passes the W side of the mill. Main elevation of mill overlooks flat arable fields to the NW.	Moderate	Medium (localized)	Low	Minor
2581	Lindores House	Category B Listed	326413	716721	3	1.6	Medium	Situated in small designed landscape on edge of Lindores Village. Just SE of modern farmstead. Main elevations orientated NW and SE. Entrance to house on N side. Woodland shelterbelt screening views out to N. On N banks of Lindores Loch.	High	High	Low	Minor
2584	Roselea and Ivy Cottage, Lindores	Category B Listed	326500	716900	2	1.5	Medium	Situated in Lindores Village. Enclosed village setting.	High	High (localized)	Imperceptible	Negligible
2585	Macduff's Cottage, Siller Loch, Lindores	Category B Listed	326630	716913	2	1.5	Medium	Situated in Lindores Village. Enclosed village setting.	High	High (localized)	Imperceptible	Negligible

CHAPTER SIX: CULTURAL HERITAGE

NEWBURGH COMMUNITY WIND FARM ENVIRONMENTAL STATEMENT

Site no	Site Name	Status	Easting	Northing	No of turbines visible	Distance to nearest turbine (km)	Sensitivity of Receptor	Setting	Contribution of Setting	Sensitivity of setting	Effect Magnitude	Significance of Predicted Effects
2586	Dooct At The Cottage, Siller Loch, Lindores.	Category B Listed	326642	716914	2	1.6	Medium	Situated in small garden of cottage. Forms part of Lindores Village. Past on south side by public road (A913).	Moderate	Medium (localized)	Imperceptible	Negligible
2588	Inchrye Lodge	Category B Listed	327254	716230	3	2.5	Medium	Lodge situated at S entrance to Inchrye House. Situated in an area of woodland immediately E of the public road (A913). Views from lodge concentrated on Lindores Loch.	Moderate	Medium (localized)	Imperceptible	Negligible
2590	Berryhill House	Category B Listed	325868	715982	3	2.1	Medium	Situated in farmland on the NE edge of Berryhill Farm and just NE of the farm steading and other barns. Surrounded by trees. Main elevations of house orientated NNW and SSE.	Moderate	Medium (localized)	Imperceptible	Negligible
2591	Halton Hill Steading	Category B Listed	324523	716153	3	2.3	Medium	Enclosed farm setting. Surrounded by woodland.	Moderate	Medium (localized)	Imperceptible	Negligible
4303	Estate Cottage To North of Kinloch Farm	Category B Listed	328152	712242	1	6.4	Medium	Forms part of small designed landscape that surrounds Kinloch House. Association with house and other related structures within the house policies. Enclosed farm setting.	Moderate	Medium (localized)	Imperceptible	Negligible
4305	Kinloch House, Dovecote	Category B Listed	328019	712137	2	6.4	Medium	Forms part of small designed landscape that surrounds Kinloch House. Association with house and other related structures within the house policies. Enclosed farm setting.	Moderate	Medium (localized)	Imperceptible	Negligible
4506	Kinmonth Doo'cot	Category B Listed	316262	719431	3	9.5	Medium	Situated in flat arable field to the east of Kinmonth House. Surrounded by open arable fields.	Moderate	Medium (localized)	Imperceptible	Negligible
4507	Kinmonth House	Category B Listed	316097	719489	3	9.7	Medium	Country House surrounded by woodland policies and improved arable land. Main elevations of house orientated NW and SE. Entrance to house on NW side. Later houses built immediately south of building to form small housing estate.	Moderate	Medium	Imperceptible	Negligible
5458	Old House of Carpow.	Category B Listed	320459	717534	3	5.2	Medium	The ruins of a 17th century house which have been burnt down. A modern bungalow now stands on the site, although the whinstone and brick walled garden associated with the original house still remains.	Negligible	Low	Imperceptible	Negligible
5483	Carey, Farmhouse	Category B Listed	317339	716808	3	8.4	Medium	The farm house was completely restored in the 1980's at the time the old farmsteading and remains of a dovecot associated with the house were demolished. The house now stands in a new landscaped garden and immediately S of a large modern barn. Surrounded by flat arable farmland.	Low	Low	Imperceptible	Negligible
5485	Ayton House.	Category B Listed	316738	715389	2	9.3	Medium	Surrounded by small designed landscape including woodland and parkland. Associated with Ayton Cottages and steading which are present to the SW. Entrance to house on SW side.	Moderate	Medium (localized)	Imperceptible	Negligible
9021	Glenduckie Dooct	Category B Listed	328226	718814	3	2.1	Medium	Situated in the garden of Castlehill Cottage. Surrounded by other residential properties. Small	Moderate	Medium (localized)	Imperceptible	Negligible

CHAPTER SIX: CULTURAL HERITAGE

NEWBURGH COMMUNITY WIND FARM ENVIRONMENTAL STATEMENT

Site no	Site Name	Status	Easting	Northing	No of turbines visible	Distance to nearest turbine (km)	Sensitivity of Receptor	Setting	Contribution of Setting	Sensitivity of setting	Effect Magnitude	Significance of Predicted Effects
								hamlet setting.				
10955	Middlebank Farmhouse including Ancillary Building, Boundary Walls, Gatepiers and Gates	Category B Listed	325754	727376	3	8.7	Medium	Surrounded by woodland, situated on the edge of a large modern farm steading. Around 200m N of A90. Enclosed farm setting.	Moderate	Medium (localized)	Imperceptible	Negligible
10956	The Horn Farmhouse and Steading	Category B Listed	324823	726124	3	7.6	Medium	Surrounded by flat arable land. Stands around 200m S of North Inchmicheal Caravan Park and 200m SW of the large farms steading. Open views out to the surrounding landscape.	Moderate	Medium (localized)	Imperceptible	Negligible
10958	Fingask, South Lodge including Railings	Category B Listed	324570	726342	3	7.9	Medium	South Lodge for Fingask Castle, stands outside GDL and separated from the designed landscape by flat arable fields. The lodge sits in a small woodland area just N of the A90 and the front elevation of the lodge overlooks the road to the SW.	Moderate	Medium (localized)	Imperceptible	Negligible
10959	Flatfield Farmhouse and Garden Walls	Category B Listed	322837	724791	3	7.0	Medium	Stands about 500m NW of the A90 and surrounded by flat improved arable land. Next to the farmsteading (10960). A large woodland shelterbelt present 600m to SE on S side of road limiting views out in this direction.	Moderate	Medium (localized)	Imperceptible	Negligible
10960	Flatfield Steading, West and North Ranges	Category B Listed	322822	724796	3	7.0	Medium	Stands about 500m NW of the A90 and surrounded by flat improved arable land. Next to the farmhouse (10959). A large woodland shelterbelt present 600m to SE on S side of road limiting views out in this direction.	Moderate	Medium (localized)	Imperceptible	Negligible
10961	Pitroddie, Old Manse and Former Secession Church including Boundary Walls	Category B Listed	322088	724613	3	7.2	Medium	Manse and Church stand in a small garden and surrounded by trees. They buildings stand on the W side of the public road from Pitrodirrie to the A90. Views out to open flat improved farmland. Main elevations of buildings orientated NE to SW.	Moderate	Medium	Imperceptible	Negligible
10965	Megginch Castle, Walled Gardens	Category B Listed	324183	724719	3	6.4	Medium	Forms one of a number of listed buildings and associated structures that stand in Megginch Castle GDL. Situated just N of Megginch Castle. Surrounded by woodland and parkland policies.	High	High (very localized)	Imperceptible	Negligible
10966	Megginch Castle, Icehouse	Category B Listed	324076	724721	3	6.4	Medium	Forms one of a number of listed buildings and associated structures that stand in Megginch Castle GDL. Situated just N of Megginch Castle within an area of woodland. Surrounded by woodland and parkland policies.	High	High (localized)	Imperceptible	Negligible
10968	Megginch Castle, Chapel	Category B Listed	323993	724462	3	6.2	Medium	Forms one of a number of listed buildings and associated structures that stands in Megginch Castle GDL. Situated to the W of Megginch Castle in a small wooded enclosure. Surrounded by woodland and parkland policies.	High	High	Imperceptible	Negligible
10979	Chapelhill, Learig and Viewfield	Category B Listed	320619	721269	3	5.9	Medium	Cottages standing in small hamlet of Chapelhill. Forming part of the main road. Situated on the N side of the public road. Open views out to S	Moderate	Medium (localized)	Imperceptible	Negligible

CHAPTER SIX: CULTURAL HERITAGE

NEWBURGH COMMUNITY WIND FARM ENVIRONMENTAL STATEMENT

Site no	Site Name	Status	Easting	Northing	No of turbines visible	Distance to nearest turbine (km)	Sensitivity of Receptor	Setting	Contribution of Setting	Sensitivity of setting	Effect Magnitude	Significance of Predicted Effects
								across flat improved farmland.				
10987	Westwood Cottage	Category B Listed	317037	723009	3	9.9	Medium	Ruined cottage standing in woodland.	Moderate	Medium (localized)	Imperceptible	Negligible
11220	Arches On Cliff Over Flawcraig Farm (The Monument)	Category B Listed	323348	727741	3	9.5	Medium	Gothic folly that forms part of the Fingask Castle GDL. Standing in woodland towards the E end of the GDL just N of Flawcraig Farm.	High	High	Imperceptible	Negligible
11590	Errol Village, North Bank Dykes, Community Centre (Former Female Industrial School) including Boundary Walls, Gatepiers and Gates	Category B Listed	325322	722940	3	4.4	Medium	Situated in Errol. Enclosed village setting. Views concentrated on village.	Moderate	Medium (localized)	Low	Minor
11592	Errol Village, The Cross, Market Cross and Water Fountain	Category B Listed	325070	722776	3	4.3	Medium	Situated in Errol. Enclosed village setting. Views concentrated on village.	Moderate	Medium (localized)	Low	Minor
11593	Errol Village, High Street, Dalgleish House including Ancillary Buildings, Boundary Walls and Gatepiers	Category B Listed	325009	722745	3	4.3	Medium	Situated in Errol. Enclosed village setting. Views concentrated on village.	Moderate	Medium (localised)	Low	Minor
11594	Errol Village, 1 - 6 (Inclusive Nos) High Street, Kiersland	Category B Listed	324949	722746	3	4.3	Medium	Situated in Errol. Enclosed village setting. Views concentrated on village.	Moderate	Medium (localized)	Low	Minor
11600	Errol Station Old Station including Footbridge and Fencing	Category B Listed	325366	724542	3	6.0	Medium	Situated in open flat arable land on outskirts of small village. No longer in use; now forms part of The Railway Heritage Centre.	Moderate	Medium (localized)	Imperceptible	Negligible
11602	Newbigging Dovecot	Category B Listed	326452	725187	3	6.6	Medium	Ruined dovecot standing in an area of rough pasture just SE of farm. Large complex of modern farm barns or greenhouses around 50m to the E. Farm setting.	Moderate	Medium (localized)	Imperceptible	Negligible
11603	Errol Station, Signal Box	Category B Listed	325366	724542	3	6.0	Medium	Situated in open flat arable land on outskirts of small village. No longer in use; now forms part of The Railway Heritage Centre.	Moderate	Medium (very localized)	Imperceptible	Negligible
11607	Waterybutts Dovecot	Category B Listed	327657	725928	3	7.4	Medium	Ruins of a dovecot that stand in an unlisted walled garden situated about 90m ENE of Waterybutts Farmhouse and steading. Surrounded by open arable farmland.	Moderate	Medium (very localized)	Imperceptible	Negligible
11608	Port Allen Farm Horsemill and Steading	Category B Listed	325059	721253	3	2.8	Medium	Forms part of Port Allen Farm. Enclosed farm setting on N coast of Firth of Tay.	Moderate	Medium (very localized)	Imperceptible	Negligible
11610	Inchmartine Coach House and Dovecot With Former Chapel	Category B Listed	326314	728115	3	9.5	Medium	Forms part of Inchmartine House steading which lies to the E of the house. Part of several listed structures that form part of a small designed landscape that surround Inchmartine House. Situated in woodland and parkland policies. Enclosed farm setting.	Moderate	Medium (localized)	Imperceptible	Negligible
11634	Fingask Castle	Category B Listed	322789	727468	3	9.4	Medium	Original 16th century tower house which has been substantially restored and modified during the 1920s. Stands at the centre of the Fingask Castle GDL. Surrounded by woodland and parkland policies. Entrance to house is gained	High	High	Imperceptible	Negligible

CHAPTER SIX: CULTURAL HERITAGE

NEWBURGH COMMUNITY WIND FARM ENVIRONMENTAL STATEMENT

Site no	Site Name	Status	Easting	Northing	No of turbines visible	Distance to nearest turbine (km)	Sensitivity of Receptor	Setting	Contribution of Setting	Sensitivity of setting	Effect Magnitude	Significance of Predicted Effects
								from the N. There are open views from the SE elevation of the house overlooking the gardens and parkland. Views out of the GDL are limited by surrounding woodland.				
11635	Fingask Castle, Sundial	Category B Listed	322833	727442	3	9.4	Medium	Sundial forming part of the GDL surrounding Fingask Castle and one of several other listed associated structures and buildings. Surrounded by woodland policies.	High	High	Imperceptible	Negligible
11636	Fingask Castle Gardens, Statuary.	Category B Listed	322861	727407	3	9.4	Medium	Large series of statutory mainly illustrating Scottish poems. Forming part of the GDL surrounding Fingask Castle and one of several other listed associated structures and buildings. Surrounded by woodland policies.	High	High	Imperceptible	Negligible
11637	Fingask Castle Gardens Well West of Castle	Category B Listed	322861	727407	3	9.4	Medium	Ornamental well forming part of the GDL surrounding Fingask Castle and one of several other listed associated structures and buildings. Surrounded by woodland policies.	High	High	Imperceptible	Negligible
11638	Font, Cross Etc. Fingask Castle Gardens	Category B Listed	322810	727451	3	9.4	Medium	Forms part of the GDL surrounding Fingask Castle and one of several other listed associated structures and buildings. Surrounded by woodland policies.	High	High	Imperceptible	Negligible
11644	Kilspindie Parish Church.	Category B Listed	321997	725752	3	8.2	Medium	Standing in small graveyard and surrounded by woodland. On edge of Kilspindie Village. Building orientated E to S.	Moderate	Medium	Imperceptible	Negligible
11645	Stuart of Rait Mausoleum. Kilspindie Churchyard	Category B Listed	321997	725752	3	8.2	Medium	Standing in graveyard of Kilspindie Church (11644). Surrounded by woodland. On edge of Kilspindie Village.	Moderate	Medium (localized)	Imperceptible	Negligible
11652	Kilspindie Doocot	Category B Listed	321857	725860	3	8.4	Medium	Situated in an area of rough pasture at the edge of woodland. Immediately W of Kilspindie Farm. Farm setting.	Moderate	Medium (localized)	Imperceptible	Negligible
11655	Rait Farmhouse	Category B Listed	322717	726760	3	8.8	Medium	Surrounded by woodland; situated on the edge of Raith Farm. Enclosed farm setting.	Moderate	Medium (localized)	Imperceptible	Negligible
11767	Inchmartine, Lodge House and Gatepiers	Category B Listed	326442	727679	3	9.0	Medium	South Lodge for Inchmartine House. Situated in small area of woodland immediately N of A90.	Moderate	Medium (localized)	Imperceptible	Negligible
11952	Glencarse House, West Lodge and Gatepiers	Category B Listed	319350	722426	3	7.6	Medium	Situated at the end of the entrance to Glencarse House and Farm. Partially surrounded by woodland shelterbelts. Views from main elevation overlooking flat improved arable farmland.	Moderate	Medium (localized)	Imperceptible	Negligible
11959	Glencarse House, Sundial Within Walled Garden	Category B Listed	319635	722803	3	7.6	Medium	Situated in the walled garden of Glencarse House just N of the house. Enclosed garden setting.	Moderate	Medium (localized)	Imperceptible	Negligible
11967	Glendoick House, Walled Garden, Sundial Chair	Category B Listed	320600	723500	3	7.3	Medium	Forms part of the GDL surrounding Glendoick House. Stands to the SW of the house, now forms part of a commercial garden centre and surrounded by modern green houses and allotment areas.	High	High (localized)	Imperceptible	Negligible

CHAPTER SIX: CULTURAL HERITAGE

NEWBURGH COMMUNITY WIND FARM ENVIRONMENTAL STATEMENT

Site no	Site Name	Status	Easting	Northing	No of turbines visible	Distance to nearest turbine (km)	Sensitivity of Receptor	Setting	Contribution of Setting	Sensitivity of setting	Effect Magnitude	Significance of Predicted Effects
11997	Kinfauns Schoolhouse	Category B Listed	316744	722245	1	9.8	Medium	Situated in the small hamlet of Kinfauns. Surrounded by flat improved arable fields.	Moderate	Medium (localized)	Imperceptible	Negligible
13727	Glendoick House, Dovecot	Category B Listed	321065	723081	3	6.7	Medium	Dovecot standing in an area of woodland on the SW edge of Glendoick GDL. Forms part of the GDL along with several other associated listed features and buildings.	High	High (localized)	Imperceptible	Negligible
13772	Errol Village, School Wynd, Old Churchyard including Boundary Walls	Category B Listed	325226	722814	3	4.3	Medium	Situated in Errol. Enclosed village setting. Views concentrated on village. Forms part of Errol Conservation Area.	Moderate	Medium (localized)	Low	Minor
15490	Rankeilour Mains Farmhouse, Steading, Cartshed and Cottage	Category B Listed	332803	711966	1	9.4	Medium	Enclosed farm setting. Surrounded by improved arable farmland.	Moderate	Medium (localized)	Imperceptible	Negligible
15534	Moonze Parish Kirk	Category B Listed	333849	717609	3	7.8	Medium	Situated on raised elevation and surrounded by open flat arable land. Open views out to the surrounding landscape and a prominent feature visible from a distance. Building orientated E to W.	High	High	Low	Minor
15561	Mugdrum House	Category B Listed	322790	718413	3	2.9	Medium	Country house situated on the coast immediately south of the Firth of Tay and just W of Newburgh. Surrounded by designed landscape that includes Coach House (15562). House surrounded by woodland. Main elevations orientated NW and SE. Entrance to house gained on the SE side.	High	High	Low	Minor
15567	Former Office Block, Now Sawmill, (Eastern Building) Pitcairle	Category B Listed	323757	714919	3	3.7	Medium	Forms part of the small fragmentary designed landscape surrounding Pitcairle House (Hotel). Situated around 200m SW of the house. Further later buildings have been constructed immediately west of the building. Now forms part of the self-catering lodges surrounding the hotel.	Low	Low (localized)	Imperceptible	Negligible
15749	Strathmiglo Parish Kirk Grave Yard	Category B Listed	321697	710211	3	8.8	Medium	Burial ground associated with Parish Church. Situated on edge of Strathmiglo. Bounded to the north, east and west by public roads, and by scrub land to south. Surrounded by later residential properties. Forms part of the Strathmiglo CA.	Moderate	Medium	Imperceptible	Negligible
15766	Westbank Farmhouse	Category B Listed	321630	709892	3	9.1	Medium	Early 19th century farmhouse which has now been incorporated into the outskirts of Strathmiglo. Associated stables and other farm buildings no longer survive.	Low	Low (localized)	Imperceptible	Negligible
15787	Strathmiglo Parish Kirk	Category B Listed	321654	710240	3	8.8	Medium	Parish Church situated at edge of Strathmiglo. Building aligned NW to SE. Graveyard present to south side. Surrounded by later residential properties.	Moderate	Medium	Imperceptible	Negligible
17428	Mount Hill, Hopetoun Monument (To Sir John Hope of Over Rankeilour)	Category B Listed	333097	716484	3	7.3	Medium	Monument built in 1826 to commemorate Lord Hopetoun. Situated in a woodland clearing at the summit of Mount Hill. Open views to surrounding landscape from monument. Prominent feature	High	High	Low	Minor

CHAPTER SIX: CULTURAL HERITAGE

NEWBURGH COMMUNITY WIND FARM ENVIRONMENTAL STATEMENT

Site no	Site Name	Status	Easting	Northing	No of turbines visible	Distance to nearest turbine (km)	Sensitivity of Receptor	Setting	Contribution of Setting	Sensitivity of setting	Effect Magnitude	Significance of Predicted Effects
								and visible from a distance in the surrounding landscape.				
17620	Parish Church	Category B Listed	319657	721211	3	6.7	Medium	Stands on edge of St Madoes Village. Lies in small churchyard. Building orientated NW to SE. Views concentrated on Village.	Moderate	Medium	Imperceptible	Negligible
17623	Manse of St. Madoes	Category B Listed	319758	721271	3	6.7	Medium	Situated in a small woodland policy on the edge of St Madoes Village and just E of the Parish Church.	Moderate	Medium	Imperceptible	Negligible
17630	Upper Mains, Pitfour Dovecot	Category B Listed	320200	720900	3	6.1	Medium	Situated in farmland just W of Upper Mains Farm. Farm setting.	Moderate	Low (localized)	Imperceptible	Negligible
17715	Elcho Steading (Original Buildings Only)	Category B Listed	316318	720866	3	9.7	Medium	Forms part of Elcho Farm surrounded by later farm buildings. Enclosed farm setting.	Moderate	Low (localized)	Imperceptible	Negligible
17717	Joug Stone, Wester Rhynd	Category B Listed	317197	718337	3	8.5	Medium	A stone pillory at which offenders were bound and exposed to public ridicule and assault. The stone was originally positioned at the east side of Wester Rhynd farmhouse but has subsequently been moved to the farm garden. Enclosed farm setting.	Negligible	Low (very localized)	Imperceptible	Negligible
19135	Rankeilour Dovecote	Category B Listed	332961	711958	1	9.5	Medium	Situated in corner of flat improved arable field immediately east of farm. Farmland setting.	Moderate	Medium (localized)	Imperceptible	Negligible
19808	Inchyra House Lodge	Category B Listed	318769	721007	3	7.5	Medium	Lodge at entrance of Inchyra House. One of several buildings and features that form part of the Inchyra GDL. Situated on the edge of woodland policies immediately N of the public road (A90). Main elevation and entrance to Inchyra House orientated to south.	High	High (localized)	Imperceptible	Negligible
20878	Main Street, Cross, War Memorial	Category B Listed	319002	716363	1	6.9	Medium	Situated within Abernethy Parish Church Churchyard at centre of Abernethy. Enclosed town setting. Forms part of Abernethy Conservation Area.	Moderate	Medium (localized)	Imperceptible	Negligible
20908	3 Main Street, Corner Shop	Category B Listed	318776	716357	2	7.1	Medium	Situated in Abernethy. Enclosed town setting. Views concentrated on town. Forms part of Abernethy Conservation Area.	High	High (localized)	Imperceptible	Negligible
20909	1 Main Street, Balloburn	Category B Listed	318751	716340	2	7.1	Medium	Situated in Abernethy. Enclosed town setting. Views concentrated on town. Forms part of Abernethy Conservation Area.	High	High (localized)	Imperceptible	Negligible
38481	Abbey House	Category B Listed	324324	718449	3	1.4	Medium	Situated immediately W of the ruins of Lindores Abbey on the outskirts of Newburgh. Immediately N of the Newburgh to Flisk public road. Associated farm steading present on opposite side of public road. Entrance to house on W side and partially screened by trees. Main elevation of house looks out to the N.	Moderate	Medium (localized)	Low	Minor
38483	Taybank, Newburgh	Category B Listed	323901	718236	3	1.8	Medium	Situated within Newburgh. Enclosed town setting. Views concentrated on village.	High	High (localized)	Low	Minor
38485	Guthrie Lodge, Newburgh	Category B Listed	323799	718239	3	1.9	Medium	Situated within Newburgh. Enclosed town setting. Views concentrated on village.	High	High (localized)	Low	Minor

CHAPTER SIX: CULTURAL HERITAGE

NEWBURGH COMMUNITY WIND FARM ENVIRONMENTAL STATEMENT

Site no	Site Name	Status	Easting	Northing	No of turbines visible	Distance to nearest turbine (km)	Sensitivity of Receptor	Setting	Contribution of Setting	Sensitivity of setting	Effect Magnitude	Significance of Predicted Effects
38486	1-3 High Street, Newburgh	Category B Listed	323745	718309	3	1.9	Medium	Newburgh Conservation Area. Enclosed town setting. Situated at centre of town. Views concentrated on town.	High	High (localized)	Low	Minor
38489	17 High Street, Newburgh	Category B Listed	323695	718305	3	2.0	Medium	Newburgh Conservation Area. Enclosed town setting. Situated at centre of town. Views concentrated on town.	High	High (localized)	Low	Minor
38497	35-39 High Street, Newburgh	Category B Listed	323622	718291	3	2.0	Medium	Newburgh Conservation Area. Enclosed town setting. Situated at centre of town. Views concentrated on town.	High	High (localized)	Low	Minor
38506	Town House High Street, Newburgh	Category B Listed	323527	718283	3	2.1	Medium	Newburgh Conservation Area. Enclosed town setting. Situated at centre of town. Views concentrated on town.	High	High (localized)	Low	Minor
38507	Craigview, off High Street, Newburgh	Category B Listed	323529	718251	3	2.1	Medium	Newburgh Conservation Area. Enclosed town setting. Situated at centre of town. Views concentrated on town.	High	High (localized)	Low	Minor
38508	69, 71 High Street, Newburgh	Category B Listed	323520	718285	3	2.1	Medium	Newburgh Conservation Area. Enclosed town setting. Situated at centre of town. Views concentrated on town.	High	High (localized)	Low	Minor
38509	81 High Street, Newburgh	Category B Listed	323477	718276	3	2.2	Medium	Newburgh Conservation Area. Enclosed town setting. Situated at centre of town. Views concentrated on town.	High	High (localized)	Low	Minor
38513	National Commercial (Originally Commercial) Bank and Adjoining Buildings, 89-93 High Street, Newburgh	Category B Listed	323440	718274	3	2.2	Medium	Newburgh Conservation Area. Enclosed town setting. Situated at centre of town. Views concentrated on town.	High	High (localized)	Low	Minor
38530	165-173 High Street, Newburgh	Category B Listed	323247	718265	3	2.4	Medium	Newburgh Conservation Area. Enclosed town setting. Situated at centre of town. Views concentrated on town.	High	High (localized)	Low	Minor
38551	Fountain Hotel, High Street, Newburgh	Category B Listed	323773	718342	3	1.9	Medium	Newburgh Conservation Area. Enclosed town setting. Situated at centre of town. Views concentrated on town.	High	High (localized)	Low	Minor
38552	George Hotel High Street, Newburgh	Category B Listed	323752	718332	3	1.9	Medium	Newburgh Conservation Area. Enclosed town setting. Situated at centre of town. Views concentrated on town.	High	High (localized)	Low	Minor
38562	42 High Street, Newburgh	Category B Listed	323636	718321	3	2.0	Medium	Newburgh Conservation Area. Enclosed town setting. Situated at centre of town. Views concentrated on town.	High	High (localized)	Low	Minor
38575	Lindores Lodge, High Street, Newburgh	Category B Listed	323322	718318	3	2.3	Medium	Newburgh Conservation Area. Enclosed town setting. Situated at centre of town. Views concentrated on town.	High	High (localized)	Low	Minor
38586	186, 188 High Street, Newburgh	Category B Listed	323166	718274	3	2.5	Medium	Newburgh Conservation Area. Enclosed town setting. Situated at centre of town. Views concentrated on town.	High	High (localized)	Low	Minor
38594	Tay Bridge Hotel, Clinton Street, Newburgh	Category B Listed	323036	718168	3	2.6	Medium	Newburgh Conservation Area. Enclosed town setting. Situated at centre of town. Views concentrated on town.	High	High (localized)	Low	Minor

CHAPTER SIX: CULTURAL HERITAGE

NEWBURGH COMMUNITY WIND FARM ENVIRONMENTAL STATEMENT

Site no	Site Name	Status	Easting	Northing	No of turbines visible	Distance to nearest turbine (km)	Sensitivity of Receptor	Setting	Contribution of Setting	Sensitivity of setting	Effect Magnitude	Significance of Predicted Effects
38601	Criterion House Cornhill Street, Newburgh	Category B Listed	323480	718400	3	2.2	Medium	Newburgh Conservation Area. Enclosed town setting. Situated at centre of town. Views concentrated on town.	High	High (localized)	Low	Minor
38602	Barns O' Woodside, Newburgh	Category B Listed	323659	718138	3	2.0	Medium	Situated within Newburgh. Enclosed town setting. Views concentrated on village.	High	High (localized)	Low	Minor
38604	Bethunes' Cottage, Newburgh	Category B Listed	323685	717913	3	2.0	Medium	Situated within Newburgh. Enclosed town setting. Views concentrated on village.	High	High (localized)	Low	Minor
38651	Woodhaven Farmhouse, 92 Riverside Road Wormit Woodhaven	Category B Listed	323647	718333	3	2.0	Medium	Newburgh Conservation Area. Enclosed town setting. Situated at centre of town. Views concentrated on town.	High	High (localized)	Low	Minor
45921	Inchrye Steading	Category B Listed	327081	716995	2	1.8	Medium	Enclosed farm setting. Surrounded by improved arable farmland.	Moderate	Medium (localized)	Imperceptible	Negligible
48154	East Inchmichael Farmhouse and Former Chapel including Ancillary Building, Gatepiers and Boundary Walls	Category B Listed	325050	725328	3	6.8	Medium	Enclosed farm setting. Surrounded by improved farmland.	Moderate	Medium (localized)	Imperceptible	Negligible
48157	Errol Park, East Lodge Gates and Gatepiers	Category B Listed	324959	722720	3	4.3	Medium	Forms one of a number of listed buildings and associated structures that stand in Errol Park GDL. Stands at E boundary of GDL on edge of woodland overlooking Errol Village.	Moderate	Medium	Imperceptible	Negligible
48158	Errol Park, Folly (Troy)	Category B Listed	324638	722331	3	4.0	Medium	Situated in small woodland just outside the southern boundary of Errol Park GDL and immediately S of the public road.	Moderate	Medium	Imperceptible	Negligible
48161	Errol Park, Walled Garden including Gatepiers, Gates and Ancillary Buildings	Category B Listed	324630	722632	3	4.3	Medium	Forms one of a number of listed buildings and associated structures that stand in Errol Park GDL. Lie at centre of GDL just W of House.	Moderate	Medium (very localized)	Imperceptible	Negligible
48162	Errol Park, West Gate With Quadrant Walls, Railings and Gates	Category B Listed	324186	722137	3	4.0	Medium	Forms one of a number of listed buildings and associated structures that stand in Errol Park GDL. Stands at S boundary of GDL on edge of woodland.	Moderate	Medium (localized)	Low	Minor
48163	Errol Park, West Lodge including Kennels	Category B Listed	324129	722131	3	4.0	Medium	Forms one of a number of listed buildings and associated structures that stand in Errol Park GDL. Stands at S boundary of GDL on edge of woodland.	Moderate	Medium (localized)	Low	Minor
48166	Errol Village, High Street, Albert House	Category B Listed	325038	722760	3	4.3	Medium	Situated in Errol. Enclosed village setting. Views concentrated on village. Forms part of Errol Conservation Area.	Moderate	Medium (localized)	Low	Minor
48175	Errol Village, Station Road, Appleton House including Ancillary Building, Boundary Walls, Gatepiers and Gates	Category B Listed	325389	722940	3	4.4	Medium	Situated in Errol. Enclosed village setting. Views concentrated on village. Forms part of Errol Conservation Area.	Moderate	Medium (localized)	Low	Minor
48176	Errol Village, Station Road, Primary School including Ancillary Buildings, Boundary Walls and Gatepiers	Category B Listed	325421	723041	3	4.5	Medium	Situated in Errol. Enclosed village setting. Views concentrated on village. Forms part of Errol Conservation Area.	Moderate	Medium (localized)	Low	Minor
48177	Errol Village, Station Road and North Bank Dykes, The	Category B Listed	325322	722940	3	4.4	Medium	Situated in Errol. Enclosed village setting. Views concentrated on village. Forms part of Errol	Moderate	Medium (localized)	Low	Minor

CHAPTER SIX: CULTURAL HERITAGE

NEWBURGH COMMUNITY WIND FARM ENVIRONMENTAL STATEMENT

Site no	Site Name	Status	Easting	Northing	No of turbines visible	Distance to nearest turbine (km)	Sensitivity of Receptor	Setting	Contribution of Setting	Sensitivity of setting	Effect Magnitude	Significance of Predicted Effects
	Schoolhouse (Former Female Industrial School) including Boundary Walls							Conservation Area.				
48180	Inchcoonans Road, Errol Brick Company Brick Stacks and Kilns	Category B Listed	323857	723336	3	5.2	Medium	1950 beehive kilns and square-section stacks; the only survivor of a group of 19th century brickworks in the area producing pottery, bricks and field drainage tiles. The kilns were last used in 1986 when one was converted to a museum. Enclosed industrial setting; the kilns and stack surrounded by other associated buildings. Situated around 200m N of Errol Village.	High	High (localized)	Imperceptible	Negligible
48184	Megginch Castle, Kingdom Farmhouse	Category B Listed	324079	724990	3	6.7	Medium	Forms one of a number of listed buildings and associated structures that stand in Megginch Castle GDL. Situated on NE boundary of Megginch Castle policies in an area of open farmland. Just S of farm steadings and other modern farm buildings. Enclosed farm setting.	Moderate	Medium (localized)	Imperceptible	Negligible
48192	Ross Steading and Horsemill	Category B Listed	321046	722014	3	6.0	Medium	Forms part of Ross Farm including farmhouse and modern barns. Enclosed farm setting.	Moderate	Medium (localized)	Imperceptible	Negligible
48193	Sandyhall Farmhouse With Horsemill and Steading	Category B Listed	321369	723487	3	6.8	Medium	Sandyhall Farm, enclosed farm setting.	Moderate	Medium (localized)	Imperceptible	Negligible
48203	West Leys Steading	Category B Listed	325917	724039	3	5.4	Medium	Farm steading that forms part of West Leys Farm. Enclosed farm setting.	Moderate	Medium (localized)	Imperceptible	Negligible
50469	Fingask Castle, Old Sawmill	Category B Listed	322904	727932	2	9.8	Medium	Old Sawmill forming part of the GDL surrounding Fingask Castle and one of several other listed associated structures and buildings. Situated in an isolated spot in a natural valley surrounded by steep embankments. Surrounded by woodland.	High	High (localized)	Imperceptible	Negligible
48187	Muirhouses Steading including Boundary Walls	Category B Listed	327261	724788	3	6.2	Medium	Farm steading that forms part of Muirhouse Farm. Enclosed farm setting. Situated on the southwestern edge of Newbiggings Village.	Moderate	Medium (localized)	Imperceptible	Negligible
172	Errol Park	GDL	324347	722619	3	4.4	High	Small Inventory designed landscape situated immediately E of Errol Village and within the flat plains of the Carse of Gowrie. The estate lies behind a stone wall and cannot be seen from the road. From the house terrace there are fine views to the south over the Firth of Tay and wide panoramic views of the Tay can be seen from the parkland. Use to be connected with the former designed landscape of Murie House which no longer exists. A stone folly connected with the GDL is situated to the west of the mansion in an area of woodland called the Maze. The current main entrance to the GDL is from the south.	High	High	Low	Minor
274	Megginch Castle	GDL	323959	724511	3	6.3	High	Small Inventory designed landscape situated just north of the A85 public road. The GDL consist of woodland and parkland surrounding the Category	High	High	Low	Minor

CHAPTER SIX: CULTURAL HERITAGE

NEWBURGH COMMUNITY WIND FARM ENVIRONMENTAL STATEMENT

Site no	Site Name	Status	Easting	Northing	No of turbines visible	Distance to nearest turbine (km)	Sensitivity of Receptor	Setting	Contribution of Setting	Sensitivity of setting	Effect Magnitude	Significance of Predicted Effects
								A Listed Megginch Castle. There are long views from the policies north to the Sidlaw Hills and southwards across the River Tay to Norman's Law and the hills of Fife. The woodlands surrounding Megginch Castle can be seen from some distance. The castle is sited in the middle of the inner park, the inner park is enclosed by woodland although the outer park and policies are more open.				
218	Inchrya	GDL	318927	721426	3	7.5	High	Small Inventory designed landscape surrounding Category A Listed Inchrya House and associated structures. The GDL comprises parkland, gardens and woodland. It is situated immediately northwest of St Madoes Village. The designed landscape is surrounded by flat arable land and there are open views from the southern woodland policies out across the Firth of Tay to the Ochil and Lomond Hills in Fife.	High	High	Low	Minor
177	Fingask Castle	GDL	323066	727758	3	9.6	High	Small Inventory designed landscape surrounding Category B Listed Fingask Castle. One of the oldest gardens in Scotland first created in the 17th century. Today all that remains of the early gardens are the terraces and a small woodland block which have been incorporated into a later 19th century picturesque style garden. The GDL lies on the west side of a deep ravine formed by the Craig Burn and overlooks the flat plains of the Carse of Gowrie and the River Tay, to the south, and the Sidlaw Hills to the north. The policies of the GDL are bordered by woodland which stretches along the ravine. Terraces run southwards from Fingask Castle to the edge of an escarpment overlooking the Carse of Gowrie.	High	High	Imperceptible	Negligible
194	Glendoick	GDL	320815	723531	3	7.2	High	Small Inventory designed landscape that lies at the foot of the escarpment of the Sidlaw Hills above the Carse of Gowrie and surrounding the Category A Listed Glendoick House. The house lies just below the escarpment overlooking the plain of the Carse of Gowrie. The important woodland gardens of the GDL called 'The Den' run along a ravine made by the Rocky Burn on the northern edge of the GDL.	High	High	Low	Minor
	Strathmiglo	CA	321510	710167	3	8.9	Medium	Strathmiglo Conservation Area, including around 25 Listed Buildings. Small enclosed village setting with main buildings spread down either side of high street. Village situated at the junction of the A912 with the A91 and clustered around the River Eden.	High	High	Imperceptible	Negligible

CHAPTER SIX: CULTURAL HERITAGE

NEWBURGH COMMUNITY WIND FARM ENVIRONMENTAL STATEMENT

Site no	Site Name	Status	Easting	Northing	No of turbines visible	Distance to nearest turbine (km)	Sensitivity of Receptor	Setting	Contribution of Setting	Sensitivity of setting	Effect Magnitude	Significance of Predicted Effects
	Newburgh	CA	323307	718282	3	2.3	Medium	Newburgh Conservation Area, including around 100 listed buildings. Small enclosed town setting with main buildings spread down either side of high street. Spread along the A913 and the southern coastline of the Firth of Tay.	High	High	Low	Minor
	Abernethy	CA	318919	716338	2	7.0	Medium	Abernethy Conservation Area, including over 40 listed buildings. Small enclosed town setting with main buildings spread down either side of main (high) street. Just S of A913. ZTV indicates that the proposed turbines will only be visible from the northern edge of the Conservation Area.	High	High	Imperceptible	Negligible
	Errol	CA	325242	722890	3	4.3	Medium	Errol Conservation Area, includes over 25 listed buildings clustered along the main high street (B958) and situated just E of Errol Park GDL. There are views to the S of the Conservation Area over open flat arable land and across the Firth of Tay to the Fife coastline.	High	High	Low	Minor
	Rait	CA	322650	726799	3	8.9	Medium	Rait Conservation Area, includes nine listed buildings. Small enclosed village setting. Village clustered around the main street (West End) of the village. Surrounded by flat arable fields.	High	High	Imperceptible	Negligible

APPENDIX 6.3: Category C(S) Listed Buildings and Non-Inventory Designed Landscapes (NIDL) within 5km of the proposed development predicted by the ZTV to have intervisibility of the wind turbines

Site no	Site Name	Status	Easting	Northing	No of turbines visible	Distance to nearest turbine (km)	Sensitivity of Receptor	Setting	Contribution of Setting	Sensitivity of Setting	Impact Magnitude	Significance of Predicted Impacts
2198	Kirkyard of Dunbog	Category C(S) Listed	328504	718034	3	2.4	Low	Kirkyard enclosed with stone wall and surrounded by trees. Situated within grounds of the Old Coach House which is now a residential property. Enclosed setting.	Moderate	Low (very localized)	Imperceptible	Negligible
2199	Dunbog School	Category C(S) Listed	328893	718453	3	2.7	Low	Forms part of a modern school complex and surrounded by later buildings. Enclosed setting.	Moderate	Low (localized)	Imperceptible	Negligible
2564	Craigmill - Miller's House	Category C(S) Listed	324531	717916	3	1.1	Low	Forms part of a former mill complex surrounded by other buildings. Enclosed setting. Large opencast quarry present on opposite side of public road (A913).	Moderate	Low (localized)	Imperceptible	Negligible
2566	Parkhill Steading	Category C(S) Listed	324545	718599	3	1.2	Low	Forms part of Parkhill Farm situated on W edge of farm. Enclosed farm setting surrounded by improved farmland.	Moderate	Low (localized)	Imperceptible	Negligible

CHAPTER SIX: CULTURAL HERITAGE

NEWBURGH COMMUNITY WIND FARM ENVIRONMENTAL STATEMENT

Site no	Site Name	Status	Easting	Northing	No of turbines visible	Distance to nearest turbine (km)	Sensitivity of Receptor	Setting	Contribution of Setting	Sensitivity of Setting	Impact Magnitude	Significance of Predicted Impacts
2580	Abdie Cottage and Kirk Style	Category C(S) Listed	325942	716375	3	1.8	Low	Cottages forming part of designed landscape surrounding Abdie House. Lies just NW of Former Abdie Church (825 / 4311).	Moderate	Low (localized)	Imperceptible	Negligible
10973	Errol Park, South Lodge including Gatepiers	Category C(S) Listed	324510	722357	3	4.1	Low	Forms one of a number of listed buildings and associated structures that stand in Errol Park GDL. Stands at S boundary of GDL on edge of woodland.	High	Medium (localized)	Imperceptible	Negligible
10976	Errol Village, School Wynd, 1-5 (Inclusive Nos) Argyle House (Former Schoolhouse and School)	Category C(S) Listed	325185	722820	3	4.3	Low	Situated in Errol. Enclosed village setting. Views concentrated on village. Forms part of Errol Conservation Area.	Moderate	Low (localized)	Low	Negligible
10980	Clashbenny Farmhouse including Terraced Garden, Boundary Walls and Gates	Category C(S) Listed	321839	721031	3	4.8	Low	Enclosed farm setting. Surrounded by improved farmland.	Moderate	Low (localized)	Low	Negligible
11595	Errol Village, Church Lane, Former Free Church, (Sanfina Uk Ltd)	Category C(S) Listed	325264	722852	3	4.3	Low	Situated in Errol. Enclosed village setting. Views concentrated on village. Forms part of Errol Conservation Area.	Moderate	Low (localized)	Low	Negligible
11596	Errol Village, High Street, Commercial Hotel	Category C(S) Listed	325149	722835	3	4.3	Low	Situated in Errol. Enclosed village setting. Views concentrated on village. Forms part of Errol Conservation Area.	Moderate	Low (localized)	Low	Negligible
11606	Port Allen Farm Gatepiers	Category C(S) Listed	325046	721278	3	2.9	Low	Enclosed farm setting. Surrounded by improved farmland.	Moderate	Low (localized)	Imperceptible	Negligible
13728	Hill of Errol Farmhouse	Category C(S) Listed	322964	721081	3	3.9	Low	Enclosed farm setting. Surrounded by improved farmland.	Moderate	Low (localized)	Imperceptible	Negligible
15562	Mugdrum House, Offices and Coachman's House	Category C(S) Listed	322747	718344	3	2.9	Low	Situated in the designed landscape surrounding Mugdrum House along with other associated buildings and features. On coast of Firth of Tay around 200m SW of House. Surrounded by woodland.	Moderate	Low	Imperceptible	Negligible
15566	Pitcairlie Ice House	Category C(S) Listed	323785	714953	3	3.7	Low	Forms part of the small fragmentary designed landscape surrounding Pitcairlie House (Hotel). Situated in flat grassland area immediately SW of house.	Moderate	Low (localized)	Imperceptible	Negligible
38482	Parish Church of Newburgh	Category C(S) Listed	323996	718320	3	1.7	Low	Situated within Newburgh. Enclosed town setting. Views concentrated on village.	High	Medium (localized)	Low	Minor
38484	Dunvegan (Former Manse)	Category C(S) Listed	323853	718184	3	1.8	Low	Situated within Newburgh. Enclosed town setting. Views concentrated on village.	High	Medium (localized)	Low	Minor
38487	5-7 High Street, Newburgh	Category C(S) Listed	323729	718304	3	1.9	Low	Newburgh Conservation Area. Enclosed town setting. Situated at centre of town. Views concentrated on town.	High	Medium (localized)	Low	Minor
38488	9-13 High Street, Newburgh	Category C(S) Listed	323718	718307	3	1.9	Low	Newburgh Conservation Area. Enclosed town setting. Situated at centre of town. Views concentrated on town.	High	Medium (localized)	Low	Minor
38490	19 High Street, Newburgh	Category C(S) Listed	323689	718305	3	2.0	Low	Newburgh Conservation Area. Enclosed town setting. Situated at centre of town. Views concentrated on town.	High	Medium (localized)	Low	Minor

CHAPTER SIX: CULTURAL HERITAGE

NEWBURGH COMMUNITY WIND FARM ENVIRONMENTAL STATEMENT

Site no	Site Name	Status	Easting	Northing	No of turbines visible	Distance to nearest turbine (km)	Sensitivity of Receptor	Setting	Contribution of Setting	Sensitivity of Setting	Impact Magnitude	Significance of Predicted Impacts
38491	21 High Street, Newburgh	Category C(S) Listed	323681	718303	3	2.0	Low	Newburgh Conservation Area. Enclosed town setting. Situated at centre of town. Views concentrated on town.	High	Medium (localized)	Low	Minor
38492	23 High Street, Newburgh	Category C(S) Listed	323676	718301	3	2.0	Low	Newburgh Conservation Area. Enclosed town setting. Situated at centre of town. Views concentrated on town.	High	Medium (localized)	Low	Minor
38493	25 High Street, Newburgh	Category C(S) Listed	323668	718302	3	2.0	Low	Newburgh Conservation Area. Enclosed town setting. Situated at centre of town. Views concentrated on town.	High	Medium (localized)	Low	Minor
38494	27 High Street, (Excluding 3 Ruinous Houses At Rear), Newburgh	Category C(S) Listed	323650	718301	3	2.0	Low	Newburgh Conservation Area. Enclosed town setting. Situated at centre of town. Views concentrated on town.	High	Medium (localized)	Low	Minor
38495	29 High Street, Newburgh	Category C(S) Listed	323639	718300	3	2.0	Low	Newburgh Conservation Area. Enclosed town setting. Situated at centre of town. Views concentrated on town.	High	Medium (localized)	Low	Minor
38496	31, 33 High Street, Newburgh	Category C(S) Listed	323631	718299	3	2.0	Low	Newburgh Conservation Area. Enclosed town setting. Situated at centre of town. Views concentrated on town.	High	Medium (localized)	Low	Minor
38498	41 High Street, Newburgh	Category C(S) Listed	323597	718298	3	2.1	Low	Newburgh Conservation Area. Enclosed town setting. Situated at centre of town. Views concentrated on town.	High	Medium (localized)	Low	Minor
38499	43, 45 High Street, Newburgh	Category C(S) Listed	323592	718292	3	2.1	Low	Newburgh Conservation Area. Enclosed town setting. Situated at centre of town. Views concentrated on town.	High	Medium (localized)	Low	Minor
38500	The Bear Tavern, 47 High Street, Newburgh	Category C(S) Listed	323582	718294	3	2.1	Low	Newburgh Conservation Area. Enclosed town setting. Situated at centre of town. Views concentrated on town.	High	Medium (localized)	Low	Minor
38501	49-51 High Street, Newburgh	Category C(S) Listed	323576	718290	3	2.1	Low	Newburgh Conservation Area. Enclosed town setting. Situated at centre of town. Views concentrated on town.	High	Medium (localized)	Low	Minor
38502	53 High Street (Cottages Now Stores At Back Excluded), Newburgh	Category C(S) Listed	323562	718292	3	2.1	Low	Newburgh Conservation Area. Enclosed town setting. Situated at centre of town. Views concentrated on town.	High	Medium (localized)	Low	Minor
38503	57, 59 High Street, Newburgh	Category C(S) Listed	323556	718292	3	2.1	Low	Newburgh Conservation Area. Enclosed town setting. Situated at centre of town. Views concentrated on town.	High	Medium (localized)	Low	Minor
38504	61 High Street, Newburgh	Category C(S) Listed	323551	718284	3	2.1	Low	Newburgh Conservation Area. Enclosed town setting. Situated at centre of town. Views concentrated on town.	High	Medium (localized)	Low	Minor
38505	65 High Street, Newburgh	Category C(S) Listed	323540	718278	3	2.1	Low	Newburgh Conservation Area. Enclosed town setting. Situated at centre of town. Views concentrated on town.	High	Medium (localized)	Low	Minor
38510	Wilkie's Garage At Rear of 81 High Street, Newburgh	Category C(S) Listed	323479	718254	3	2.2	Low	Newburgh Conservation Area. Enclosed town setting. Situated at centre of town. Views concentrated on town.	High	Medium (localized)	Low	Minor
38511	83, 85 High Street, Newburgh	Category C(S) Listed	323471	718279	3	2.2	Low	Newburgh Conservation Area. Enclosed town setting. Situated at centre of town.	High	Medium (localized)	Low	Minor

CHAPTER SIX: CULTURAL HERITAGE

NEWBURGH COMMUNITY WIND FARM ENVIRONMENTAL STATEMENT

Site no	Site Name	Status	Easting	Northing	No of turbines visible	Distance to nearest turbine (km)	Sensitivity of Receptor	Setting	Contribution of Setting	Sensitivity of Setting	Impact Magnitude	Significance of Predicted Impacts
								Views concentrated on town.				
38512	87 High Street, Newburgh	Category C(S) Listed	323462	718277	3	2.2	Low	Newburgh Conservation Area. Enclosed town setting. Situated at centre of town. Views concentrated on town.	High	Medium (localized)	Low	Minor
38514	95 High Street, Newburgh	Category C(S) Listed	323431	718271	3	2.2	Low	Newburgh Conservation Area. Enclosed town setting. Situated at centre of town. Views concentrated on town.	High	Medium (localized)	Low	Minor
38515	97 High Street, Newburgh	Category C(S) Listed	323425	718276	3	2.2	Low	Newburgh Conservation Area. Enclosed town setting. Situated at centre of town. Views concentrated on town.	High	Medium (localized)	Low	Minor
38516	99, 101 High Street, Newburgh	Category C(S) Listed	323419	718274	3	2.2	Low	Newburgh Conservation Area. Enclosed town setting. Situated at centre of town. Views concentrated on town.	High	Medium (localized)	Low	Minor
38517	103-107 High Street, Albert Bar, Newburgh	Category C(S) Listed	323403	718277	3	2.3	Low	Newburgh Conservation Area. Enclosed town setting. Situated at centre of town. Views concentrated on town.	High	Medium (localized)	Low	Minor
38518	109 High Street, Newburgh	Category C(S) Listed	323398	718276	3	2.3	Low	Newburgh Conservation Area. Enclosed town setting. Situated at centre of town. Views concentrated on town.	High	Medium (localized)	Low	Minor
38519	113 High Street, Newburgh	Category C(S) Listed	323376	718279	3	2.3	Low	Newburgh Conservation Area. Enclosed town setting. Situated at centre of town. Views concentrated on town.	High	Medium (localized)	Low	Minor
38520	3 Hill Road, Newburgh	Category C(S) Listed	323377	718269	3	2.3	Low	Newburgh Conservation Area. Enclosed town setting. Situated at centre of town. Views concentrated on town.	High	Medium (localized)	Low	Minor
38521	5 Hill Road, Newburgh	Category C(S) Listed	323378	718257	3	2.3	Low	Newburgh Conservation Area. Enclosed town setting. Situated at centre of town. Views concentrated on town.	High	Medium (localized)	Low	Minor
38522	135 High Street, Newburgh	Category C(S) Listed	323315	718280	3	2.3	Low	Newburgh Conservation Area. Enclosed town setting. Situated at centre of town. Views concentrated on town.	High	Medium (localized)	Low	Minor
38523	137 High Street, Newburgh	Category C(S) Listed	323308	718280	3	2.3	Low	Newburgh Conservation Area. Enclosed town setting. Situated at centre of town. Views concentrated on town.	High	Medium (localized)	Low	Minor
38524	141, 143 High Street, Newburgh	Category C(S) Listed	323300	718269	3	2.4	Low	Newburgh Conservation Area. Enclosed town setting. Situated at centre of town. Views concentrated on town.	High	Medium (localized)	Low	Minor
38525	149 High Street, Newburgh	Category C(S) Listed	323278	718273	3	2.4	Low	Newburgh Conservation Area. Enclosed town setting. Situated at centre of town. Views concentrated on town.	High	Medium (localized)	Low	Minor
38526	153 and 151 High Street including Ancillary Structures and Boundary Walls, Newburgh	Category C(S) Listed	323271	718271	3	2.4	Low	Newburgh Conservation Area. Enclosed town setting. Situated at centre of town. Views concentrated on town.	High	Medium (localized)	Low	Minor
38527	155-159 High Street, Newburgh	Category C(S) Listed	323265	718271	3	2.4	Low	Newburgh Conservation Area. Enclosed town setting. Situated at centre of town. Views concentrated on town.	High	Medium (localized)	Low	Minor

CHAPTER SIX: CULTURAL HERITAGE

NEWBURGH COMMUNITY WIND FARM ENVIRONMENTAL STATEMENT

Site no	Site Name	Status	Easting	Northing	No of turbines visible	Distance to nearest turbine (km)	Sensitivity of Receptor	Setting	Contribution of Setting	Sensitivity of Setting	Impact Magnitude	Significance of Predicted Impacts
38528	161 High Street, Newburgh	Category C(S) Listed	323253	718275	3	2.4	Low	Newburgh Conservation Area. Enclosed town setting. Situated at centre of town. Views concentrated on town.	High	Medium (localized)	Low	Minor
38529	Mcnaughton, 165 High Street, Newburgh	Category C(S) Listed	323255	718258	3	2.4	Low	Newburgh Conservation Area. Enclosed town setting. Situated at centre of town. Views concentrated on town.	High	Medium (localized)	Low	Minor
38531	175 High Street, Newburgh	Category C(S) Listed	323235	718260	3	2.4	Low	Newburgh Conservation Area. Enclosed town setting. Situated at centre of town. Views concentrated on town.	High	Medium (localized)	Low	Minor
38532	177 High Street, Newburgh	Category C(S) Listed	323222	718261	3	2.4	Low	Newburgh Conservation Area. Enclosed town setting. Situated at centre of town. Views concentrated on town.	High	Medium (localized)	Low	Minor
38533	179 High Street, Newburgh	Category C(S) Listed	323217	718260	3	2.4	Low	Newburgh Conservation Area. Enclosed town setting. Situated at centre of town. Views concentrated on town.	High	Medium (localized)	Low	Minor
38534	181 High Street, Newburgh	Category C(S) Listed	323207	718257	3	2.4	Low	Newburgh Conservation Area. Enclosed town setting. Situated at centre of town. Views concentrated on town.	High	Medium (localized)	Low	Minor
38535	183, 185 High Street, Newburgh	Category C(S) Listed	323201	718258	3	2.5	Low	Newburgh Conservation Area. Enclosed town setting. Situated at centre of town. Views concentrated on town.	High	Medium (localized)	Low	Minor
38536	187 High Street, Newburgh	Category C(S) Listed	323195	718255	3	2.5	Low	Newburgh Conservation Area. Enclosed town setting. Situated at centre of town. Views concentrated on town.	High	Medium (localized)	Low	Minor
38537	189, 191 High Street, Newburgh	Category C(S) Listed	323189	718256	3	2.5	Low	Newburgh Conservation Area. Enclosed town setting. Situated at centre of town. Views concentrated on town.	High	Medium (localized)	Low	Minor
38538	193 High Street, Newburgh	Category C(S) Listed	323181	718254	3	2.5	Low	Newburgh Conservation Area. Enclosed town setting. Situated at centre of town. Views concentrated on town.	High	Medium (localized)	Low	Minor
38539	195 High Street, Newburgh	Category C(S) Listed	323175	718252	3	2.5	Low	Newburgh Conservation Area. Enclosed town setting. Situated at centre of town. Views concentrated on town.	High	Medium (localized)	Low	Minor
38540	197-9 High Street, Newburgh	Category C(S) Listed	323167	718238	3	2.5	Low	Newburgh Conservation Area. Enclosed town setting. Situated at centre of town. Views concentrated on town.	High	Medium (localized)	Low	Minor
38541	201 High Street, Newburgh	Category C(S) Listed	323158	718238	3	2.5	Low	Newburgh Conservation Area. Enclosed town setting. Situated at centre of town. Views concentrated on town.	High	Medium (localized)	Low	Minor
38542	205 High Street, Newburgh	Category C(S) Listed	323143	718239	3	2.5	Low	Newburgh Conservation Area. Enclosed town setting. Situated at centre of town. Views concentrated on town.	High	Medium (localized)	Low	Minor
38543	207, 209 High Street, Newburgh	Category C(S) Listed	323143	718239	3	2.5	Low	Newburgh Conservation Area. Enclosed town setting. Situated at centre of town. Views concentrated on town.	High	Medium (localized)	Low	Minor
38544	211, 213 High Street, Newburgh	Category C(S) Listed	323137	718234	3	2.5	Low	Newburgh Conservation Area. Enclosed town setting. Situated at centre of town.	High	Medium (localized)	Low	Minor

CHAPTER SIX: CULTURAL HERITAGE

NEWBURGH COMMUNITY WIND FARM ENVIRONMENTAL STATEMENT

Site no	Site Name	Status	Easting	Northing	No of turbines visible	Distance to nearest turbine (km)	Sensitivity of Receptor	Setting	Contribution of Setting	Sensitivity of Setting	Impact Magnitude	Significance of Predicted Impacts
								Views concentrated on town.				
38545	215-219 High Street, Newburgh	Category C(S) Listed	323131	718229	3	2.5	Low	Newburgh Conservation Area. Enclosed town setting. Situated at centre of town. Views concentrated on town.	High	Medium (localized)	Low	Minor
38546	225, 227 High Street, Newburgh	Category C(S) Listed	323107	718212	3	2.5	Low	Newburgh Conservation Area. Enclosed town setting. Situated at centre of town. Views concentrated on town.	High	Medium (localized)	Low	Minor
38547	229 High Street, Newburgh	Category C(S) Listed	323096	718212	3	2.6	Low	Newburgh Conservation Area. Enclosed town setting. Situated at centre of town. Views concentrated on town.	High	Medium (localized)	Low	Minor
38548	231-235 High Street, Newburgh	Category C(S) Listed	323089	718207	3	2.6	Low	Newburgh Conservation Area. Enclosed town setting. Situated at centre of town. Views concentrated on town.	High	Medium (localized)	Low	Minor
38549	237 High Street, Newburgh	Category C(S) Listed	323075	718199	3	2.6	Low	Newburgh Conservation Area. Enclosed town setting. Situated at centre of town. Views concentrated on town.	High	Medium (localized)	Low	Minor
38550	239, 241 High Street, Newburgh	Category C(S) Listed	323068	718196	3	2.6	Low	Newburgh Conservation Area. Enclosed town setting. Situated at centre of town. Views concentrated on town.	High	Medium (localized)	Low	Minor
38553	4-12 High Street, Newburgh	Category C(S) Listed	323745	718332	3	1.9	Low	Newburgh Conservation Area. Enclosed town setting. Situated at centre of town. Views concentrated on town.	High	Medium (localized)	Low	Minor
38554	14 High Street, Newburgh	Category C(S) Listed	323724	718339	3	1.9	Low	Newburgh Conservation Area. Enclosed town setting. Situated at centre of town. Views concentrated on town.	High	Medium (localized)	Low	Minor
38555	20 High Street, Newburgh	Category C(S) Listed	323710	718327	3	2.0	Low	Newburgh Conservation Area. Enclosed town setting. Situated at centre of town. Views concentrated on town.	High	Medium (localized)	Low	Minor
38556	22, 24 High Street, Newburgh	Category C(S) Listed	323703	718330	3	2.0	Low	Newburgh Conservation Area. Enclosed town setting. Situated at centre of town. Views concentrated on town.	High	Medium (localized)	Low	Minor
38557	26 High Street, Newburgh	Category C(S) Listed	323692	718338	3	2.0	Low	Newburgh Conservation Area. Enclosed town setting. Situated at centre of town. Views concentrated on town.	High	Medium (localized)	Low	Minor
38558	28, 30 High Street, Newburgh	Category C(S) Listed	323680	718330	3	2.0	Low	Newburgh Conservation Area. Enclosed town setting. Situated at centre of town. Views concentrated on town.	High	Medium (localized)	Low	Minor
38559	32 High Street, Newburgh	Category C(S) Listed	323668	718339	3	2.0	Low	Newburgh Conservation Area. Enclosed town setting. Situated at centre of town. Views concentrated on town.	High	Medium (localized)	Low	Minor
38560	34 High Street, Newburgh	Category C(S) Listed	323660	718330	3	2.0	Low	Newburgh Conservation Area. Enclosed town setting. Situated at centre of town. Views concentrated on town.	High	Medium (localized)	Low	Minor
38561	36-40 High Street, Newburgh	Category C(S) Listed	323654	718329	3	2.0	Low	Newburgh Conservation Area. Enclosed town setting. Situated at centre of town. Views concentrated on town.	High	Medium (localized)	Low	Minor
38563	44, 46 High Street, Newburgh	Category	323623	718321	3	2.0	Low	Newburgh Conservation Area. Enclosed	High	Medium	Low	Minor

CHAPTER SIX: CULTURAL HERITAGE

NEWBURGH COMMUNITY WIND FARM ENVIRONMENTAL STATEMENT

Site no	Site Name	Status	Easting	Northing	No of turbines visible	Distance to nearest turbine (km)	Sensitivity of Receptor	Setting	Contribution of Setting	Sensitivity of Setting	Impact Magnitude	Significance of Predicted Impacts
		C(S) Listed						town setting. Situated at centre of town. Views concentrated on town.		(localized)		
38564	48 High Street, Newburgh	Category C(S) Listed	323612	718320	3	2.0	Low	Newburgh Conservation Area. Enclosed town setting. Situated at centre of town. Views concentrated on town.	High	Medium (localized)	Low	Minor
38565	50, 52 High Street, Newburgh	Category C(S) Listed	323602	718331	3	2.1	Low	Newburgh Conservation Area. Enclosed town setting. Situated at centre of town. Views concentrated on town.	High	Medium (localized)	Low	Minor
38566	54, 56 High Street, Newburgh	Category C(S) Listed	323592	718322	3	2.1	Low	Newburgh Conservation Area. Enclosed town setting. Situated at centre of town. Views concentrated on town.	High	Medium (localized)	Low	Minor
38567	58, 60 High Street, Newburgh	Category C(S) Listed	323582	718317	3	2.1	Low	Newburgh Conservation Area. Enclosed town setting. Situated at centre of town. Views concentrated on town.	High	Medium (localized)	Low	Minor
38568	60a and 62 High Street, Newburgh	Category C(S) Listed	323574	718325	3	2.1	Low	Newburgh Conservation Area. Enclosed town setting. Situated at centre of town. Views concentrated on town.	High	Medium (localized)	Low	Minor
38569	64, 68 High Street, Newburgh	Category C(S) Listed	323571	718314	3	2.1	Low	Newburgh Conservation Area. Enclosed town setting. Situated at centre of town. Views concentrated on town.	High	Medium (localized)	Low	Minor
38570	70 High Street, Newburgh	Category C(S) Listed	323556	718327	3	2.1	Low	Newburgh Conservation Area. Enclosed town setting. Situated at centre of town. Views concentrated on town.	High	Medium (localized)	Low	Minor
38571	72 High Street, Newburgh	Category C(S) Listed	323552	718314	3	2.1	Low	Newburgh Conservation Area. Enclosed town setting. Situated at centre of town. Views concentrated on town.	High	Medium (localized)	Low	Minor
38572	104-108 High Street, Newburgh	Category C(S) Listed	323445	718318	3	2.2	Low	Newburgh Conservation Area. Enclosed town setting. Situated at centre of town. Views concentrated on town.	High	Medium (localized)	Low	Minor
38573	110-112 High Street, Newburgh	Category C(S) Listed	323440	718314	3	2.2	Low	Newburgh Conservation Area. Enclosed town setting. Situated at centre of town. Views concentrated on town.	High	Medium (localized)	Low	Minor
38574	128-136 High Street, Newburgh	Category C(S) Listed	323339	718313	3	2.3	Low	Newburgh Conservation Area. Enclosed town setting. Situated at centre of town. Views concentrated on town.	High	Medium (localized)	Low	Minor
38576	140-142 High Street, Newburgh	Category C(S) Listed	323312	718304	3	2.3	Low	Newburgh Conservation Area. Enclosed town setting. Situated at centre of town. Views concentrated on town.	High	Medium (localized)	Low	Minor
38577	144-146 High Street, Newburgh	Category C(S) Listed	323298	718302	3	2.4	Low	Newburgh Conservation Area. Enclosed town setting. Situated at centre of town. Views concentrated on town.	High	Medium (localized)	Low	Minor
38578	154 High Street, Newburgh	Category C(S) Listed	323258	718302	3	2.4	Low	Newburgh Conservation Area. Enclosed town setting. Situated at centre of town. Views concentrated on town.	High	Medium (localized)	Low	Minor
38579	156 High Street, Newburgh	Category C(S) Listed	323247	718301	3	2.4	Low	Newburgh Conservation Area. Enclosed town setting. Situated at centre of town. Views concentrated on town.	High	Medium (localized)	Low	Minor

CHAPTER SIX: CULTURAL HERITAGE

NEWBURGH COMMUNITY WIND FARM ENVIRONMENTAL STATEMENT

Site no	Site Name	Status	Easting	Northing	No of turbines visible	Distance to nearest turbine (km)	Sensitivity of Receptor	Setting	Contribution of Setting	Sensitivity of Setting	Impact Magnitude	Significance of Predicted Impacts
38580	158, 160 High Street, Newburgh	Category C(S) Listed	323240	718299	3	2.4	Low	Newburgh Conservation Area. Enclosed town setting. Situated at centre of town. Views concentrated on town.	High	Medium (localized)	Low	Minor
38581	162, 164 High Street and Back Premises, Newburgh	Category C(S) Listed	323225	718306	3	2.4	Low	Newburgh Conservation Area. Enclosed town setting. Situated at centre of town. Views concentrated on town.	High	Medium (localized)	Low	Minor
38582	166, 168 High Street, Newburgh	Category C(S) Listed	323214	718291	3	2.4	Low	Newburgh Conservation Area. Enclosed town setting. Situated at centre of town. Views concentrated on town.	High	Medium (localized)	Low	Minor
38583	170-174 High Street, Newburgh	Category C(S) Listed	323199	718288	3	2.5	Low	Newburgh Conservation Area. Enclosed town setting. Situated at centre of town. Views concentrated on town.	High	Medium (localized)	Low	Minor
38584	178 High Street, Newburgh	Category C(S) Listed	323188	718283	3	2.5	Low	Newburgh Conservation Area. Enclosed town setting. Situated at centre of town. Views concentrated on town.	High	Medium (localized)	Low	Minor
38585	180, 182 High Street, Newburgh	Category C(S) Listed	323178	718276	3	2.5	Low	Newburgh Conservation Area. Enclosed town setting. Situated at centre of town. Views concentrated on town.	High	Medium (localized)	Low	Minor
38587	190-2 High Street, Newburgh	Category C(S) Listed	323151	718267	3	2.5	Low	Newburgh Conservation Area. Enclosed town setting. Situated at centre of town. Views concentrated on town.	High	Medium (localized)	Low	Minor
38588	194, 196 High Street, Newburgh	Category C(S) Listed	323145	718269	3	2.5	Low	Newburgh Conservation Area. Enclosed town setting. Situated at centre of town. Views concentrated on town.	High	Medium (localized)	Low	Minor
38589	198-202 High Street, Newburgh	Category C(S) Listed	323131	718261	3	2.5	Low	Newburgh Conservation Area. Enclosed town setting. Situated at centre of town. Views concentrated on town.	High	Medium (localized)	Low	Minor
38590	206 High Street, Newburgh	Category C(S) Listed	323127	718254	3	2.5	Low	Newburgh Conservation Area. Enclosed town setting. Situated at centre of town. Views concentrated on town.	High	Medium (localized)	Low	Minor
38591	212 High Street, Newburgh	Category C(S) Listed	323112	718245	3	2.5	Low	Newburgh Conservation Area. Enclosed town setting. Situated at centre of town. Views concentrated on town.	High	Medium (localized)	Low	Minor
38592	226-230 High Street, Newburgh	Category C(S) Listed	323071	718225	3	2.6	Low	Newburgh Conservation Area. Enclosed town setting. Situated at centre of town. Views concentrated on town.	High	Medium (localized)	Low	Minor
38593	Tay View Hotel, High Street, Newburgh	Category C(S) Listed	323064	718224	3	2.6	Low	Newburgh Conservation Area. Enclosed town setting. Situated at centre of town. Views concentrated on town.	High	Medium (localized)	Low	Minor
38595	3 Shuttlefield, Newburgh	Category C(S) Listed	323040	718219	3	2.6	Low	Newburgh Conservation Area. Enclosed town setting. Situated at centre of town. Views concentrated on town.	High	Medium (localized)	Low	Minor
38596	4 Shuttlefield, Newburgh	Category C(S) Listed	323033	718222	3	2.6	Low	Newburgh Conservation Area. Enclosed town setting. Situated at centre of town. Views concentrated on town.	High	Medium (localized)	Low	Minor
38597	5 Shuttlefield, Newburgh	Category C(S) Listed	323025	718223	3	2.6	Low	Newburgh Conservation Area. Enclosed town setting. Situated at centre of town.	High	Medium (localized)	Low	Minor

CHAPTER SIX: CULTURAL HERITAGE

NEWBURGH COMMUNITY WIND FARM ENVIRONMENTAL STATEMENT

Site no	Site Name	Status	Easting	Northing	No of turbines visible	Distance to nearest turbine (km)	Sensitivity of Receptor	Setting	Contribution of Setting	Sensitivity of Setting	Impact Magnitude	Significance of Predicted Impacts
								Views concentrated on town.				
38598	Helendale, Shuttlefield, Newburgh	Category C(S) Listed	323014	718225	3	2.6	Low	Newburgh Conservation Area. Enclosed town setting. Situated at centre of town. Views concentrated on town.	High	Medium (localized)	Low	Minor
38599	9 Shuttlefield, Newburgh	Category C(S) Listed	322995	718228	3	2.7	Low	Newburgh Conservation Area. Enclosed town setting. Situated at centre of town. Views concentrated on town.	High	Medium (localized)	Low	Minor
38600	11 Shuttlefield, Newburgh	Category C(S) Listed	322979	718248	3	2.7	Low	Newburgh Conservation Area. Enclosed town setting. Situated at centre of town. Views concentrated on town.	High	Medium (localized)	Low	Minor
38603	Monkswell Cottage	Category C(S) Listed	323722	717978	3	1.9	Low	Newburgh Conservation Area. Enclosed town setting. Situated at centre of town. Views concentrated on town.	High	Medium (localized)	Low	Minor
43476	Halton Hill Farmhouse With Boundary Walls	Category C(S) Listed	324533	716162	3	2.2	Low	Enclosed farm setting. Surrounded by woodland.	Moderate	Low (localized)	Imperceptible	Negligible
48155	Errol Park, Boundary Walls	Category C(S) Listed	324901	722759	3	4.3	Low	Forms one of a number of listed buildings and associated structures that stand in Errol Park GDL.	High	Medium (very localized)	Imperceptible	Negligible
48156	Errol Park, East Lodge	Category C(S) Listed	324945	722715	3	4.2	Low	Forms one of a number of listed buildings and associated structures that stand in Errol Park GDL. Stands at E boundary of GDL on edge of woodland overlooking Errol Village.	High	Medium (localized)	Imperceptible	Negligible
48159	Errol Park, Gardener's Cottage	Category C(S) Listed	324531	722654	3	4.3	Low	Forms one of a number of listed buildings and associated structures that stand in Errol Park GDL. Stands at centre of GDL just NW of gardens.	High	Medium (localized)	Imperceptible	Negligible
48164	Errol Village, 1 - 3 (Inclusive Nos) Church Avenue and Station Road including Gatepier, Boundary Walls and Railings	Category C(S) Listed	325278	722905	3	4.4	Low	Situated in Errol. Enclosed village setting. Views concentrated on village. Forms part of Errol Conservation Area.	Moderate	Low (localized)	Low	Negligible
48165	Errol Village, 1 and 2 Croft Terrace including Boundary Walls and Gates	Category C(S) Listed	325141	722670	3	4.2	Low	Situated in Errol. Enclosed village setting. Views concentrated on village. Forms part of Errol Conservation Area.	Moderate	Low (localized)	Low	Negligible
48167	Errol Village, High Street, Ardyne including Boundary Wall and Gate	Category C(S) Listed	324996	722734	3	4.3	Low	Situated in Errol. Enclosed village setting. Views concentrated on village. Forms part of Errol Conservation Area.	Moderate	Low (localized)	Low	Negligible
48168	Errol Village, High Street, Victoria Hall including Boundary Walls	Category C(S) Listed	325035	722744	3	4.3	Low	Situated in Errol. Enclosed village setting. Views concentrated on village. Forms part of Errol Conservation Area.	Moderate	Low (localized)	Low	Negligible
48169	Errol Village, High Street, Library Buildings	Category C(S) Listed	325097	722814	3	4.3	Low	Situated in Errol. Enclosed village setting. Views concentrated on village. Forms part of Errol Conservation Area.	Moderate	Low (localized)	Low	Negligible
48170	Errol Village, North Bank Dykes, The Birks including Ancillary Building, Boundary Walls and Gates	Category C(S) Listed	325030	722880	3	4.4	Low	Situated in Errol. Enclosed village setting. Views concentrated on village. Forms part of Errol Conservation Area.	Moderate	Low (localized)	Low	Negligible

CHAPTER SIX: CULTURAL HERITAGE

NEWBURGH COMMUNITY WIND FARM ENVIRONMENTAL STATEMENT

Site no	Site Name	Status	Easting	Northing	No of turbines visible	Distance to nearest turbine (km)	Sensitivity of Receptor	Setting	Contribution of Setting	Sensitivity of Setting	Impact Magnitude	Significance of Predicted Impacts
48171	Errol Village, North Bank Dykes, The White House including Walled Garden, Courtyard Walls and Gatepiers	Category C(S) Listed	325074	723044	3	4.5	Low	Situated in Errol. Enclosed village setting. Views concentrated on village. Forms part of Errol Conservation Area.	Moderate	Low (localized)	Low	Negligible
48172	Errol Village, St Madoes Road, Park Cottage	Category C(S)	325012	722710	3	4.2	Low	Situated in Errol. Enclosed village setting. Views concentrated on village. Forms part of Errol Conservation Area.	Moderate	Low (localized)	Low	Negligible
48174	Errol Village, School Wynd, Grey House	Category C(S) Listed	325151	722809	3	4.3	Low	Situated in Errol. Enclosed village setting. Views concentrated on village.	Moderate	Low (localized)	Low	Negligible
48178	Errol Village, 1, 2 and 3 Taybank Place, Taybank Stables, including Ancillary Building and Gates	Category C(S) Listed	325486	723060	3	4.5	Low	Situated in Errol. Enclosed village setting. Views concentrated on village. Forms part of Errol Conservation Area.	Moderate	Low (localized)	Low	Negligible
48188	Murie Cemetery including Boundary Walls, Gatepiers and Gates	Category C(S) Listed	323638	722042	3	4.2	Low	Small cemetery with World War II and civilian memorials. In care of War Graves Commission. Situated in a small area of woodland and surrounded by trees. Enclosed setting.	High	Medium	Imperceptible	Negligible
48189	Murie Cross	Category C(S) Listed	323153	722386	3	4.8	Low	Celtic stone cross standing on the remains of Law Knowe Motte (7292). Standing in woodland on the edge of a flat arable field.	Moderate	Low (localized)	Imperceptible	Negligible
48190	Murie Walled Garden including Gatepiers and Ancillary Buildings	Category C(S) Listed	323709	722540	3	4.6	Low	All that remains of Murie House which was demolished in the late 1800s /early1900s. Situated at the edge of a flat improved pasture field. Now forms part of Errol House Estate.	Low	Low (localized)	Imperceptible	Negligible
14	Mugdrum	NIDL	322750	718350	3	2.9	Medium	Small Non-Inventory Designed Landscape that surrounds Mugdrum House. Comprising woodland and parkland policies situated on the coast of the Firth of Tay.	Moderate	Medium	Low	Minor
16	Parkhill	NIDL	325000	718590	3	0.8	Medium	Small Non-Inventory Designed Landscape that surrounds Parkhill House. Surrounded by woodland.	Moderate	Medium	Low	Minor
17	Ballinbreich Castle	NIDL	327170	720490	3	2.1	Medium	Small Non-Inventory Designed Landscape that surrounds the ruins of Ballinbreich Castle. Fragmentary woodland that surrounds castle ruins on coast of Firth of Tay around 20m from beach.	Moderate	Medium	Low	Minor
20	Dunbog	NIDL	328510	718060	3	2.4	Medium	Small and fragmentary Non-Inventory Designed Landscape that surrounds an area named Dunbog including Wester and Easter Dunbog, The Auld Coach House, and the Old Kirk. Surrounded by flat arable fields.	Moderate	Medium	Imperceptible	Negligible
39	Pitcairlie House	NIDL	323850	715000	3	3.6	Medium	Small and fragmentary Non-Inventory Designed Landscape surrounding Pitcairlie House and other associated structures such as the ice house. The house has been	Moderate	Medium	Imperceptible	Negligible

CHAPTER SIX: CULTURAL HERITAGE

NEWBURGH COMMUNITY WIND FARM ENVIRONMENTAL STATEMENT

Site no	Site Name	Status	Easting	Northing	No of turbines visible	Distance to nearest turbine (km)	Sensitivity of Receptor	Setting	Contribution of Setting	Sensitivity of Setting	Impact Magnitude	Significance of Predicted Impacts
								converted to a hotel. Designed landscape consists of fragmentary woodland and parkland policies, surrounded by flat arable fields.				
47	Inchrye	NIDL	327140	716760	3	2.0	Medium	Small and fragmentary Non-Inventory Designed Landscape surrounding Inchrye House consisting principally of small areas of woodland and gardens surrounding the house.	Moderate	Medium	Imperceptible	Negligible
50	Lindores House	NIDL	326420	716730	3	1.6	Medium	Small Non-Inventory Designed Landscape surrounding Lindores House and other associated structures. Comprises principally of parkland on the northern shores of Lindores Loch. Bounded by the A937 and the B937 public roads at the northern edge.	Moderate	Medium	Low	Minor
142	Lindores Abbey	NIDL	324350	718470	3	1.3	Medium	Small area land in which the remains of Lindores Abbey sits. Lies immediately N of the Newburgh to Flisk public road and on the edge of Lindores Farm.	Moderate	Medium	Low	Minor
163	Berryhill	NIDL	325870	715985	3	2.1	Medium	Small Non-Inventory Designed Landscape that surrounds Berryhill House and associated farm steading. Comprises principally of fragmentary parkland and woodland surrounded by flat arable fields.	Moderate	Medium	Imperceptible	Negligible
199	Aytounhill (Ayton)	NIDL	329685	719015	3	3.6	Medium	Small Non-Inventory Designed Landscape that surrounds Aytounhill House. Comprises of parkland and woodland policies surrounded by flat arable fields.	Moderate	Medium	Imperceptible	Negligible



Key:

- Site Boundary
- ▲ Turbine Location
- Temporary Site Compound
- Control Building
- Crane Hardstanding
- Access Track
- Survey Area
- Cultural Heritage Site (Area)
- Cultural Heritage Site (Linear)
- Track
- Area of Rig and Furrow
- ↔ Direction of Rig and Furrow
- 20m Buffer

CFA ARCHAEOLOGY LTD
 The Old Engine House
 Eskmills Park
 Musselburgh
 East Lothian, EH21 7PO
 t: 0131 273 4380
 f: 0131 273 4381
 e: info@cfa-archaeology.co.uk
 w: www.cfa-archaeology.co.uk

Fig. No: **6.1** Revision:

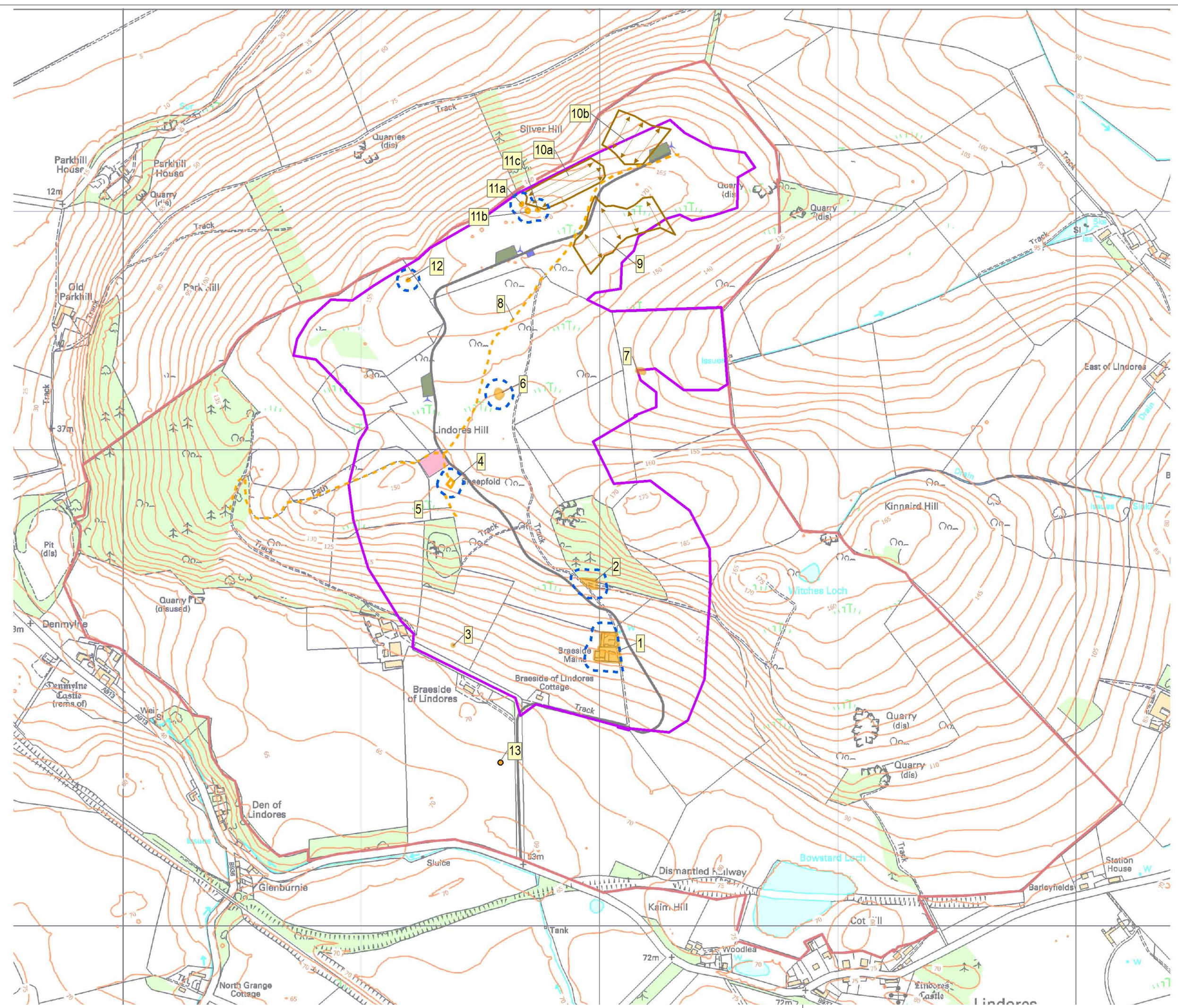
Title:
Cultural Heritage Constraints

Project:
Newburgh Community Wind Farm

Scale:
1:5,000 @ A3

Client:
Atmos Consulting

Drawn by: **SW** Page No: **0** Report No:



The copyright in this document (including its electronic form) shall remain vested in CFA Archaeology Ltd (CFA) but the Client shall have a licence to copy and use the document for the purpose for which it was provided. CFA shall not be liable for the use by any person of this document for any purpose other than that for which the same was provided by CFA. This document shall not be reproduced in whole or in part or relied upon by third parties for any use whatsoever without the express written authority of CFA.

Reproduced by permission of Ordnance Survey on behalf of HMSO. © Crown Copyright and database right 2010. All rights reserved. Ordnance Survey Licence No AL100048146 (Atmos)



Key:

- Site Boundary
- + Turbine Location
- Scheduled Monument
- + Listed Building Category A
- + Listed Building Category B
- + Listed Building Category C(S)
- Conservation Area
- Garden and Designed Landscape
- NIDL Site
- 5 and 10km Buffer

Turbine Visibility

- 1 Turbine Visible
- 2 Turbine Visible
- 3 Turbine Visible

CFA ARCHAEOLOGY LTD
 The Old Engine House
 Eskmills Park
 Musselburgh
 East Lothian, EH21 7PO
 t: 0131 273 4380
 f: 0131 273 4381
 e: info@cfa-archaeology.co.uk
 www.cfa-archaeology.co.uk

Fig. No: 6.2 Revision: A

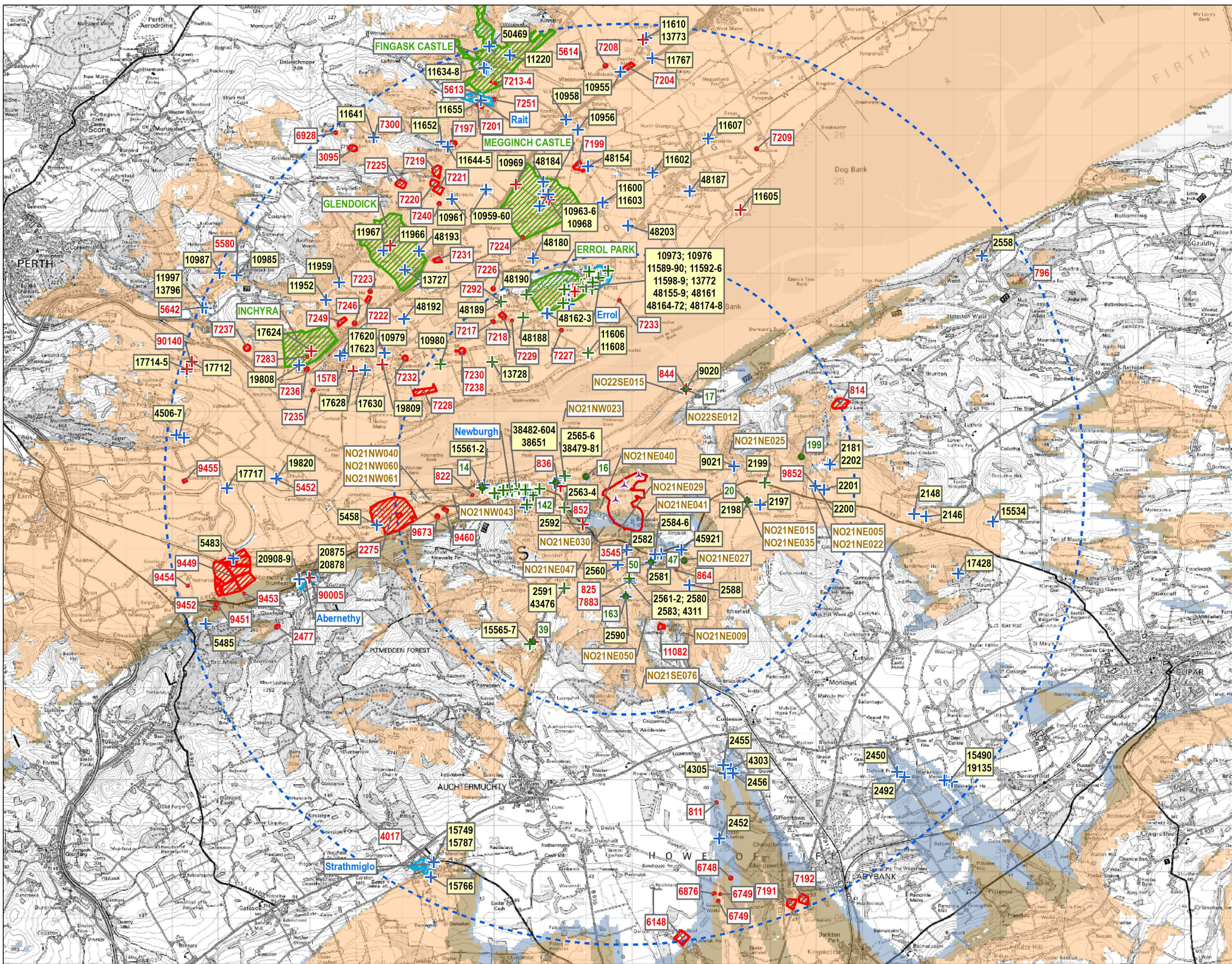
Title: Cultural Heritage ZTV and External Receptors

Project: Newburgh Community Wind Farm

Scale: 1:75,000 @ A3

Client: Atmos Consulting

Drawn by: SW Page No: 0 Report No:



The copyright in this document (including its electronic form) shall remain vested in CFA Archaeology Ltd (CFA) but the Client shall have a licence to copy and use the document for the purpose for which it was provided. CFA shall not be liable for the use by any person of this document for any purpose other than that for which the same was provided by CFA. This document shall not be reproduced in whole or in part or relied upon by third parties for any use whatsoever without the express written authority of CFA.

Reproduced by permission of Ordnance Survey on behalf of HMSO. © Crown Copyright and database right 2010. All rights reserved. Ordnance Survey Licence No AL100048146 (Atmos)