

# CFA Archaeology Ltd

*archaeological consultants*

*Advice on Archaeology & Planning*

*Environmental Impact Assessment*

*Interpretation, Design & Display*

*Finds/ Environmental Analysis*


*Field Evaluation & Excavation*


*Historic Building Recording*

*Site & Landscape Survey*

*Geophysical Survey*

**85-87 South Bridge,  
Edinburgh  
Archaeological Building Appraisal  
Report No 3302**

 0131 273 4380

 0131 273 4381

 [info@cfa-archaeology.co.uk](mailto:info@cfa-archaeology.co.uk)

 [www.cfa-archaeology.co.uk](http://www.cfa-archaeology.co.uk)

## **CFA ARCHAEOLOGY LTD**

The Old Engine House  
Eskmills Business Park  
Musselburgh  
East Lothian  
EH21 7PQ

Tel: 0131 273 4380  
Fax: 0131 273 4381  
email: [info@cfa-archaeology.co.uk](mailto:info@cfa-archaeology.co.uk)  
web: [www.cfa-archaeology.co.uk](http://www.cfa-archaeology.co.uk)

Author	Michael Cressey, BA MSc PhD MCIfA FSA Scot
Illustrator	Greame Carruthers MA MCIfA
Editor	Bruce Glendinning BSc PG Dip MCIfA
Commissioned by	Mr Joe Crolla
Date issued	June 2015
Version	0
Grid Ref	NT 25958 73496
Oasis No.	cfaarcha1-212532

This document has been prepared in accordance with CFA Archaeology Ltd standard operating procedures.

**85-87 South Bridge,  
Edinburgh  
Archaeological Building Appraisal  
Report No 3302**

## CONTENTS

1.	Introduction	4
2.	Working Methods	4
3.	Archaeological Results	6
4.	Discussion	10
5.	Conclusions	11
6.	References	12

### Tables

1.	List of records held within the NMRS	6
2.	List of key features recorded during the appraisal survey	7
3.	Significance of architectural/archaeological potential of each floor level	11

### Appendices

1.	Photographic Register	13
2.	Discovery and excavation in Scotland Entry	16

### Illustrations (bound at rear)

Fig. 1	Site Location
Fig 2a-h	Internal floor plans
Fig 3a-d	Photographic locations, Levels 1-4
Fig 3e-h	Photographic locations, Levels 5-8
Fig 4 a-c	External elevations
Fig 5	Level 1, Room 1/1 fire place and press
Fig 6	Level 1, Room 1/2 remains of a fireplace partially hidden behind rubble
Fig 7	Level 1, Room 1/4 the remains of a stone-built stairs
Fig 8	Level 1, Room 1/5 fireplace
Fig 9	Level 1, Room 1/6 stone-built stairs
Fig 10	Level 1, Room 1/7 Press and fireplace with re-used stone chimneybreast
Fig 11	Level 1, Room 1/7 Blocked window and fireplace
Fig 12	Level 1 Room 1/7 intrusive 1930s steel stanchion
Fig 13	Level 2, Room 2/1 Modern plant room
Fig 14	Level 2, Staircase
Fig 15	Level 3, Room 3/2 office with window onto Blair Street
Fig 16	Level 4 removed fireplace and surviving ceiling and cornice
Fig 17	Level 4, fenestration facing onto Blair Street
Fig 18	Level 4, Riveted steel stanchion and with supporting steelwork beams above
Fig 19	Level 5, Interior of the shop front of the former Citizens Advice
Fig 20	Level 5, Blocked Palladian window formerly facing onto Blair Street
Fig 21	Level 6, Fenestration facing onto Blair Street with suspended staircase
Fig 22	Level 7, Fenestration looking onto South Bridge

- Fig 23 Level 7, boxed in 1930s staircase exposed within modern cladding
- Fig 24 Level 8, attic window facing onto South Bridge and a blocked fireplace
- Fig 25 Level 8, attic roof rafters supported by steel bracing work
- Fig 26 Level 8, early timber purlin supported by timber props
- Fig 27 Exterior south-facing elevation, general shot
- Fig 28 Exterior south-west corner of Blair Street and the Cowgate
- Fig 29 Exterior south-facing elevation seen from South Bridge
- Fig 30 Exterior east-facing elevation facing South Bridge
- Fig 31 Exterior south-east corner of 85-87 South Bridge

## **1. INTRODUCTION**

### **1.1 General**

This report presents the results of an archaeological buildings appraisal carried out at 85-87 South Bridge, Edinburgh on behalf of Mr Joe Crolla (Fig 1). The work was based on a Written Scheme of Investigation approved by Mr John Lawson at the City of Edinburgh Archaeology Service (CECAS).

Mr John Lawson, the City of Edinburgh Council's Archaeology Service (CECAS) earlier requested in a Planning Statement that a Level 2 building recording survey be undertaken but following a site visit it was agreed that this level of recording was not appropriate and that it be lowered to an *Appraisal* survey.

### **1.2 Background**

Number 85-87 South Bridge (otherwise recorded as Nos. 40, 42, 44 Blair Street; and Nos. 208-210 Cowgate) is a Grade B-listed tenement/office building forming an integral part of the Robert Kay design (circa 1790) for the South Bridge and it also lies at the centre of the UNESCO world heritage site. The exterior facades contain classical architectural elements that include advanced string-courses, balustrades, two Italianate windows and pediments. The building rises from the Blair Street/Cowgate basement level (Level 1) to the South Bridge street level (Level 5) with another three floors above to the third floor attic level (Level 8). Levels 2 and 8 still contain modern partitions whereas levels 3-7 have had their modern interior partitions stripped out revealing only vestigial traces of c.1930s historical fabric and very little of anything earlier.

### **1.3 Objectives**

The objectives of the archaeological recording works were:

1. To carry out a rapid desk-based assessment to put the building in its historical context
2. Record the interior and exterior of the building by photography
3. Produce a succinct Appraisal report on the results of the survey
4. Assess the requirement for any further building recording work.

## **2. WORKING METHODS**

### **2.1 General**

CFA Archaeology Ltd followed the Chartered Institute for Archaeologists' Code of Conduct, Standards and Guidance. The survey was carried according to recording levels outlined in ALGAO (2013).

### *Desk-based Research*

A rapid desk-based assessment was carried out and included an examination of the Statutory List and any readily available bibliographic sources held in the Royal Commission on Historical Monuments for Scotland (RCAHMS) to place the building in its historical context.

### *Photographic recording*

The architectural drawings were checked for accuracy and are included as Figs 2a-h.

A Nikon D300 camera (12 megapixels) was used to take high-resolution digital photographs of the external and internal elevations. All photographs taken were recorded onto photographic record sheets which are appended at the back of this report (Appendix 1). Selective representative images have been included in the report (Figs 5-31).

Figures 3a-h show the orientation at which each photograph was taken.

### 3. ARCHAEOLOGICAL RESULTS

#### 3.1 Desk-based Assessment

##### *Statutory List*

Historic Scotland's Statutory List contains a Group List that includes 85-99 South Bridge (HB Ref No 29797) and is a Category B group of buildings that were listed on 29 April 1977. The properties are described as follows:

*Possibly Robert Kay, circa 1790. 3-and 4 storey (nos. 93-95) row of Classical tenements and shops, comprising 4 x 7-bay sections with altered shops to ground, situated on steeply sloping site, falling to 6-storey and attic at Cowgate (S). Painted ashlar coursed rubble to Blair Street (W) with ashlar margins. Some band courses, raised cills and cornices. Pedimented gables to S and at Nos. 85-87. Outer sections slightly advanced with raised quoins and pediments with central lunettes (semi-circular openings).*

The notes accompanying the List also mentioned that this row of tenements with its restrained Classical style and simple detailing formed an integral component of the planned streetscape of the South Bridge. The pedimented block at No 85-87 was a visually important feature of the design.

##### *RCAHMS*

The National Monuments Record (NMRS) holds record NT27SE 1340 for Nos. 85, 86, 87 South Bridge. No architectural details are provided with the entry. The NMRS contains information relative to 85-87 South Bridge Street, the details of which are listed and summarised in Table 1.

NMRS Cat. No.	Date	Summary Description
DP 095421	c.1790	Section along South Bridge Street showing the disposition of vaults below the street frontages
SC 1233386	16/11/1789	Engraved view of laying the foundation stone of Old College looking north to Register House. The Classical tenements along South Bridge are depicted as far as the Tron Church.
SC 878576	Not dated	Scanned image of drawing showing reconstruction plans of South Bridge level and Entrance level plans at Blair Street and Niddry Street Entrance level. The 85-87 block is depicted.
SC 934290	1818	South Bridge facing the Grass Market. The roof and upper windows of 85 South Bridge are depicted.
DP 039291	1837	Lithograph showing South Bridge Street to North, inscribed: 'The University South Bridge Street. Edinburgh.' 'J D Swarbreck.' Shows the Classical tenements and street frontages along South Bridge.
SC 555290	1978	Photograph of the South Bridge and corner of Blair Street, taken from the Cowgate.

Table 1 List of records held within the NMRS

##### *Cartographic Sources*

A systematic review of the cartographic sources was out with the scope of an Appraisal survey. However the report on the South Bridge/Cowgate fire damaged

buildings produced by Connolly *et al* (2002-2003) has reproduced all the pertinent maps for the South Bridge. The later maps covering the period between 1780 to 1867 show Nos. 85-87 South Bridge in block layout form.

### *Bibliographic sources*

Nos. 85-87 South Bridge fall within Connolly's *et al. Construction Phase 3 1785-1790 South Bridge Scheme Fig 11*. The same phase plan also highlighted in blue the westward addition to the South Bridge that was attributed to J & R Allen's 1929 rebuild. This inevitably had an impact on the fenestration at Levels 3-4 on the south-facing elevation of 85-87 South Bridge resulting in the loss of four windows on these levels.

An on-line document entitled *Edinburgh Vaults* by Johnson (undated, <http://www.historic-uk.com/HistoryMagazine/DestinationsUK/Edinburgh-Vaults>) mentions that three closes Marlin's Wynd, Peebles Wynd and Niddry's Wynd were demolished in the Cowgate area to make way for the construction of South Bridge. Building work commenced in 1785. The bridge consisted of 19 stone arches, spanning a chasm just over 1000 feet long. At its highest point it stood 31 feet above ground and had foundations which penetrated Edinburgh's bed rock as far down as 22 ft. The document also contains a schematic image of the vaults below South Bridge. The South Bridge was extended westwards in the 1920s.

## **3.2 Survey Results**

The interior layout of the building is described starting from the lowest level, Level 1 which was the basement level up to Level 8, the attic. Where a given level still retains its rooms then these were afforded a unique identifier according to its respective floor level (eg. 2/1, 2/2 etc) (Fig 2a-h). Table 2 provides a summary description of the survey and where appropriate individual items are cross-referenced with individual photographs listed in Appendix 1 and thumbnail image (shown in parenthesis) which are presented at the rear of this report. All the exterior fenestration that had been blocked is shown on Figs 4a-b.

Table 2 List of key features recorded during the survey

<b>Level</b>	<b>Room No</b>	<b>Summary description</b>
1	1/1	A rectangular room with a press and blocked stone fireplace on the S-facing elevation (Fig 5, 001). The fireplace was blocked with brickwork. The rest of the walls were random rubble with remnants of wall plaster surviving. Blocked opening (005) on the W-facing elevation. The blocking work could not be seen from the external Blair Street elevation.
1	1/2	A rectangular room accessed off a passage. Rubble strewn interior masking the remains of a stone fireplace (Fig 6, 007).
1	1/3	A rectangular windowless room with rubble walls (010). There was brick repair work on the W-facing elevation (011). The doorway had been reduced in height with a modern concrete lintel.
1	1/4	A rectangular room with the remains of a stone staircase (Fig 7, 016-017) at its centre. Rubble obscured the number of treads that survived. A brick-blocked opening (018) was present on the E-facing elevation. On the W-facing elevation (019) the broached treads of the staircase were visible.



Level	Room No	Summary description
1	1/5	A rectangular room with brick and stone walls with timber wall plates (021-022). An open stone fireplace (Fig 8) was situated at the S end of the room on the E-facing elevation (023). On the N-facing elevation a large opening had been blocked with brick (024). The remains of a flagstone floor survived near the fireplace (026).
1	1/6	This room had a curving stone-built wall on its W-facing elevation (037). On its opposite wall was the remains of a stone staircase (Fig 9, 038-039).
1	1/7	A rectangular room with a press and fireplace (Fig 10) on the N-facing elevation. In front of the fireplace a flagstone floor was present (055). The press had shelving scars (044). The ahlar-built fireplace occupied the centre of the wall and had an arched mantle stone (046). The chimneybreast incorporated re-used masonry (056). At the north end of the room set within the angle of the S-facing partition wall between 1/7 and 1/4 was a smaller stone fireplace (Fig 11). On the W-facing elevation a 1930s steel stanchion (Fig 12) rested on a concrete base (052). The door to Room 1/7 had been widened (053). Two blocked openings occupied the E-facing elevation but these could not be seen on the exterior elevation.
1	1/8	An L-shaped room created from modern brickwork forming a large brick-built load-bearing pier within a larger stone-built rectangular room with doorways leading to Rooms 1/5 and 1/6.
2	2/1	Modern plant room (Fig 13) with switchgear and an array of pipe work (059-060). The E-facing elevation contained two blocked windows incorporating ventilation grills. These could be seen on the exterior Blair Street elevation set within two blocked round-headed windows. The W-facing elevation contained a 1930s steel stanchion. Access to the plant room was via a set of stairs on the S-facing elevation.
2	2/2	Hallway and entrance to Blair Street basement steps (063) on two different levels. The walls were featureless with doors leading off to Rooms 2/3, 2/4 and 2/5.
2	2/3	Large rectangular storeroom (064) with featureless walls and no windows. Access was via door on the N-facing elevation. An array of shelving was situated on the S-facing elevation and behind the boxed-in entrance.
2	2/4	Storeroom with a curving wall, possibly associated with an earlier staircase? (069)
2	2/5-2/7	Modern toilets with no period features surviving. Access to this level was via a modern staircase (Fig 14).
3	3/1	Former office partially stripped (072). 1930s riveted steel stanchion exposed on the W-facing elevation (074).
3	3/2	Modern office space with single sash-and-case windows facing onto the Cowgate (Fig. 15, 076) and Blair Street (075).
3	3/3	A former windowless store cupboard with featureless walls (not photographed).
3	3/4	A former windowless kitchen area (not photographed).
3	3/5	A rectangular former office with a single sash-and-case window onto the Cowgate. The walls were all featureless (076).
3	3/6	A windowless open-plan office with stud and panelled walls (077).
4	N/A All interior rooms stripped	Five former offices, a male and female toilet, kitchen and store had been stripped out. On the N-facing elevation a fireplace had been removed (Fig 16). A c.1930s ceiling and cornice above still survived (081). The windows facing onto Blair Street and the Cowgate were all sash-and-case (Fig 17, 082-083). Exposed in the middle of the floor was a c.1930s steel stanchion supporting load-bearing beams (Fig 18, 087, 090).

Level	Room No	Summary description
5	N/A All interior rooms stripped	<p>Former Citizens Advice reception office accessed from South Bridge, including front staircase, four small offices, toilets and a staircase to Level 6. The interior hardwood replica shop-frontage of the Citizens Advice shop front still survived (Fig 19, 093). On the interior E-facing elevation three sash-and case windows survived (095) one was a Palladian window.</p> <p>Another former Palladian window at the north end of the E-facing elevation was blocked with red brick. (Fig 20, 096-098). Its stone mullions were still visible (099). Above one of the sash-and-case windows a fragment of plasterwork marked the position of an earlier staircase (105). A riveted steel stanchion stencilled with Redpath Brown Steel Work was exposed in the centre of the room (100). Later c.1930s cornices marked the positions of the corresponding room divisions (103).</p>
6	N/A All interior rooms stripped	<p>Before stripping out, Level 6 had been an open plan office overlooking South Bridge with two smaller offices at the rear. A store and cupboard were situated between the main front staircase. A rear staircase led up to Level 7. The fenestration overlooking South Bridge included five sash-and-case windows (107). Three sash-and-case windows overlooked Blair Street and a single sash-and-case window overlooked the Cowgate. The remains of the rear stair was seen to be supported by steelwork suggesting it was installed in the 1930s (Fig 21, 109).</p>
7	N/A All interior rooms stripped	<p>Before stripping out Level 7 was accessed by the main front staircase and contained a main office fronting South Bridge, male and female toilets, kitchen and store and a plant room. A rear set of stairs led to the attic (Level 8). On the N-facing elevation a single window looked onto the Cowgate. On the E-facing elevation four windows looked out onto Blair Street. The S-facing elevation contained five larger sash-and-case windows. Each had beaded reveals and panels below.</p> <p>Lath and plaster ceilings and c.1930s cornices corresponded with the room divisions (117). The underside of a c.1930s wooden white-painted staircase (Fig 23) leading up to the attic was exposed where it had been hidden by modern panel work.</p>
8	N/A Some stripping out	<p>The attic space formerly contained a plant room and store. An arched window (Lunette) with splayed reveals was present on the W-facing elevation (Fig 24). The walls surrounding it had been whitewashed. On the right-hand side of the window (facing) was a blocked fireplace (Fig 24). The timber roof had been braced in recent times with steelwork (Fig 25, 121). A second lunette window was present on the internal N-facing elevation (124). A single purlin (Fig 26) supported by three props was possibly the only 18<sup>th</sup> century timber to survive within the roofspace. The rest appeared to be late 19<sup>th</sup> or early 20<sup>th</sup> century date represented by machine sawn timbers with a mix of older and more recent sarking boards above. The staircase leading off the attic was of c.1930s date with a lathe-turned balustrade and box newal post. The staircase was lit by a lunette window facing onto Blair Street (130).</p>
Blair Street Exterior Elevation (Fig 4a)	N/A	<p>The Blair Street exterior was covered with scaffold. The stonework was plain (Fig 28). Three blocked arched windows and a door were situated at street level (Level 2, Fig 4a). Two of the windows nearest the Cowgate had rendered blocking work. Levels 3 and 4 had square-headed sash-and-case windows. Level 5 had two Palladian windows at each end of the elevation, one of which was blocked. Both flanked two sash-and-case windows. Levels 6 and 7 contained four bays with sash-and case-windows. Level 8 was pedimented and contained a lunette window at its centre. The roof was covered with grey slate.</p>

Cowgate Exterior elevation (Fig 4b)	N/A	<p>The exterior south-facing elevation (Figs 27 &amp; 29) was a cream-painted Classical facade (above Level 2) with five bays broken by advanced string courses between Levels 2-6 (135). Window blocking was evident on all levels (see Fig 4b).</p> <p>The level 2 (Cowgate) street level openings were round-headed and boarded up. A steel fire exit door was situated immediately below the South Bridge (136) with a small blind sash-and-case (4:4) window above. Levels 3-4 both had the remains of two blocked windows partly superimposed by the South Bridge that was extended on its west side during the 1920s to form a link bridge between the block destroyed by fire (Gilded Balloon) and 85-87 South Bridge. At Level 5, (South Bridge) a modern doorway had been inserted at pavement level set within ashlar stonework, resulting in the loss of a round-headed window. The level 5 windows all had balustrades and two windows were blocked. Levels 6 had three blocked windows whilst Level 7 had two. Level 8, the attic was pedimented with a central lunette window. The roof was covered with grey slate.</p>
South Bridge Exterior Elevation (Fig 4c)	N/A	<p>The South Bridge elevation was cream-painted with seven bays above the shop frontage that occupied Level 5 (Figs 30-31). The boarded shop front was divided into two large windows with a central doorway flanked by three windows. All the openings above the shop front were square headed with the lower of the two being longer. A single cornice divided the pediment from the lower portion of the facade. The pediment contained a central lunette window. The roof was covered with grey slate.</p>

#### 4. DISCUSSION

On Level 1 the survey recorded fireplaces and the remains of two separate stone-built staircases. These features appear to be of at least late 18<sup>th</sup> century in date when the core block of 85-87 South Bridge was first constructed. The fireplace in Room 1/7 (Fig. 10) is the best preserved of the five. The same room has a smaller fireplace on the opposite wall within an angle (Fig. 11). It seems unlikely that this room would have had two fireplaces and it is clearly missing a partition wall that possibly existed between the two blocked openings situated on the east-facing elevation. At least one of these rooms had a flagstone floor. The remains of the stone staircase in Rooms 1/4 and 1/6 are interesting in that they show two distinct circulation routes forming a front and back ‘common’ stair. It seems likely that the rooms with fireplaces formed individual tenancies and the rooms without fireplaces could have seen a wide variety of uses as workshops or stores.

Levels 2-3 retained late-20<sup>th</sup> century interior partitions which were all installed around a supporting 1930s steel frame. Level 2 (street level) had blocked and boarded openings onto Bair Street and the Cowgate and it is logical that all were at one time open.

Levels 4-7 had had been stripped out showing only traces of original fabric pre-dating the 1930s. This included a blocked Palladian window on the elevation fronting Blair Street at Level 5.

Within the attic space (Level 8) another blocked fireplace was recorded, again showing either domestic or office use of this space, possibly before the 1930s. The

external elevations display all the usual Classical elements that have already been described in the extract above from the Statutory List.

The south-facing elevation facing the Cowgate has lost at least four windows when the South Bridge was widened. Blocking work can be seen marking the position of two windows where the ashlar work of the bridge extension wall line abuts the main elevation (Fig 27).

Table 3 sets out the architectural/archaeological significance surviving on each floor level as *High, Moderate* or *Low*.

Level	Significance	Phase/date
Level 1	Moderate architectural/archaeological significance linked to the presence of extant architectural features including flagstone floors, fireplaces and staircases.	Late 18 <sup>th</sup> century (c.1790) into the 19 <sup>th</sup> century
Level 2	Very low architectural/archaeological interest. All partitions within the c.1790 core block have been removed.	c. 1930s onwards
Level 3	Very low architectural/archaeological interest. All modern partitions within the c.1790 core block have been removed	c. 1930s onwards
Level 4	Very low architectural/archaeological interest. Former modern partitions within the c.1790 core block have been removed	c. 1930s onwards
Level 5	Very low architectural/archaeological interest. Former modern partitions within the c.1790 core block have been removed	c. 1930s onwards
Level 6	Very low architectural/archaeological interest. Former modern partitions within the c.1790 core block	c. 1930s onwards
Level 7	Very low architectural/archaeological interest. Former modern partitions within the c.1790 core block	c. 1930s onwards
Level 8	Very low architectural/archaeological interest. Positive evidence of domestic or commercial use of the attic.	c. 1930s onwards

Table 3 Significance of architectural/archaeological potential of each floor level.

## 5. CONCLUSIONS

The Appraisal survey carried out at 85-87 South Bridge confirms that Level 1, the lowest basement is the level with architectural/archaeological remains surviving that have moderate significance. This level has remained largely unaltered in terms of its original c.1790 layout although the 1930s building work has been intrusive. It is clear from the evidence that this level was in domestic use since it was first constructed and probably continued to be the same throughout the 19<sup>th</sup> century. Current plans for the redevelopment of this Level have not been fully developed, but given its location it will probably only be for storage.

All the other levels (Levels 2-8) have been inspected and found to contain features of only low architectural or historical interest. This is largely due to earlier major refurbishments.

The survey has recorded and photographed all significant elements surviving within the building complex and it is recommended that this provides a record of the building as it stands and that no further building recording work is necessary. CFA recognises that the final decision on further work rests with CECAS.

The project archive, comprising all CFA record sheets, maps and reports, will be deposited with the RCAHMS and copies of reports will be lodged with the City of Edinburgh Council Sites and Monument Record.

A summary statement on the archaeological recording of the cinema complex will be submitted for publication in *Discovery and Excavation in Scotland* (Appendix 2) and will also be reported on through *OASIS Scotland*.

## **6. REFERENCES**

ALGAO: Scotland Historic Building Recording Guidance 2013.

Connolly, D, Cross, M, William, K and, Maxtone Graham, R 'South Bridge/ Cowgate, Edinburgh. Historical and Analytical Assessment of the fire damaged buildings. 2002-2003'. Report produced by Addyman Associates Ltd.

Johnson, B (nd) 'Edinburgh Vaults' <http://www.historic-uk.com/HistoryMagazine/DestinationsUK/Edinburgh-Vaults/>

## APPENDIX 1: Photographic Register

Photo Number	Room No	Description	Facing
001	1/1	Blocked fireplace and press on S-facing elevation	N
002	1/1	Fireplace, detailed shot of blocking work	N
003	1/1	Press in NW corner, showing shelf scars	N
004	1/1	Doorway on N-facing elevation	S
005	1/1	Doorway on W-facing elevation, and timber wall plate above	E
006	1/1	Sondage dug against the fireplace	Oblique
007	1/2	Remains of a fireplace on the S-facing elevation partly hidden by rubble	N
008	1/2	Plastered wall on the W-facing elevation	E
009	1/2	Doorway and blocked opening on the N-facing elevation	S
010	1/3	Interior of Room 1/3 showing rubble walls	N
011	1/3	General shot of the W-facing elevation showing stone and brickwork	E
012-013	1/3	Doorway flanked by a rubble wall and surmounted by brickwork	S
014	1/3	Featureless rubble-built wall	NW
015	Passage	Passage between Rooms 1/2 and 1/5	E
016	1/4	Stone stair treads	W
017-018	1/4	Dividing stairs wall and blocking work on the E-facing elevation	W
019-020	1/4	Broached stair treads visible in the wall	SE
023	1/5	General view of the interior	N
024	1/5	Contrasting brickwork and timber wall plate on the W-facing elevation	E
025	1/5	Stone fireplace on the E-facing elevation, at S end	W
026	1/5	Brick-blocked opening on the N-facing elevation	S
027	1/5	Flagstone floor	Oblique
028	1/5	Flagstone floor	S
029-031	1/5	Reduced rubble-built partition wall above the flagstone floor	E
032	1/8	Rubble filled interior of part of Room 8	S
033	1/8	Rear brick built wall and concrete ceiling	S
034-035	1/8	South-facing wall with brick and rubble build	N
036	1/8	Rubble built and brick wall supporting concrete beam	E
037	1/6	Curving rubble wall	N
038	1/6	Stone-built stair treads with brick infill below	W
039	1/6	General shot underneath the staircase	SW
040-041	1/6	Abutting walls, general fabric shot	E
042-045	1/7	Press on in the SE corner, on the N-facing elevation	S
046-047	1/7	Ashlar fireplace with re-used stone on chimneybreast	S
048	1/7	Blocked window and fireplace	W
049	1/7	General view of the SW corner	SW
050	1/7	Small fireplace built in the angle of the wall	S
051	1/7	South-facing elevation, rubble-built wall	S
052	1/7	1930s riveted stanchion resting on a concrete plinth	E
053	1/7	Door lintel in section and wall plate on adjoin wall	E
054	1/7	Contrasting brickwork and rubble infill	E
055	1/7	Flagstone floor in front of the fireplace	S
056	1/7	Fireplace mantelpiece and re-used stone on chimneybreast	S
057	1/7	Fireplace, general shot	S
058	1/4	Test-pit near the entrance to Room 1/1 showing bedrock	Oblique
059	2/1	Plant room interior, general shot on switch gear	S
060-061	2/1	Plant room boiler	W
062	2/1	Steel stanchion on the W-facing elevation of the plant room	E
063	2/2	Entrance door to Blair Street	W
064	2/3	Interior of the storeroom	W

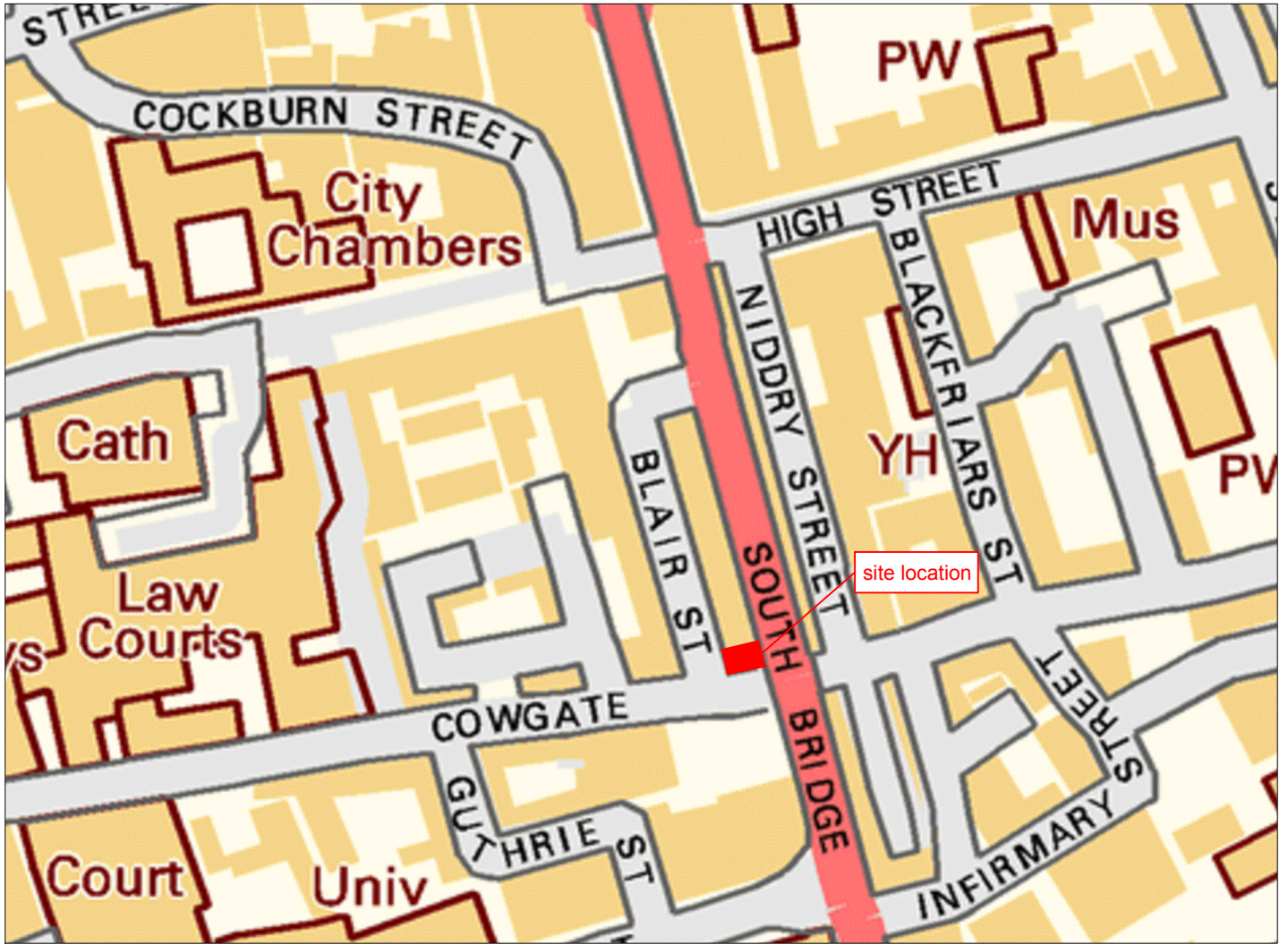
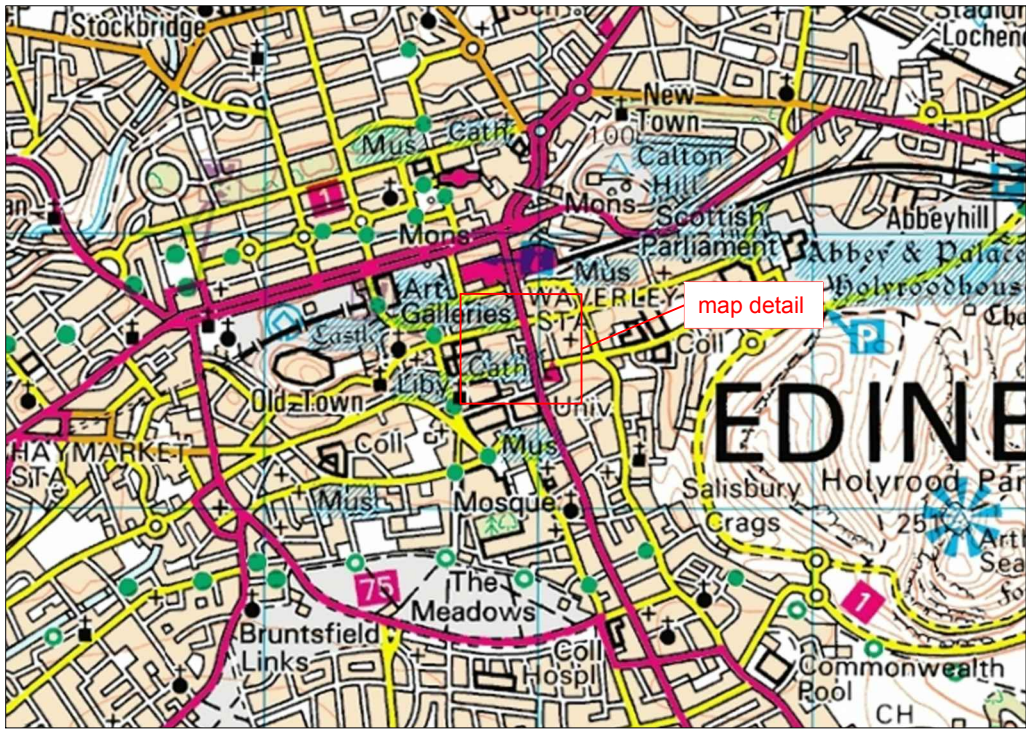
065	2/3	Interior of the storeroom	E
066-068	2/4	Interior shots of a storeroom	N & E
069	2/4	Curving wall within the interior of the storeroom, stairs?	S
070	2/6	Exposed steel stanchion in female toilet	W
071	-	Modern staircase with glass balustrade	SW
072	3/1	Former office partially stripped	S
073	3/1	Former office, general shot	W
074	3/1	Steel 1930s stanchion and brickwork	E
075	3/2	Office window on E-facing elevation	W
076	3/5	Office, modern interior	S
077	3/6	Office space partly stripped	E
078	Level 4	South-facing elevation	N
079	Level 4	West-facing elevation	E
080	Level 4	North-facing elevations with stripped ceiling	S
081	Level 4	South-west corner, N-facing elevation, removed fireplace, cornice and ceiling rose	S
082	Level 4	General shot of the fenestration on E-facing elevation	E
083	Level 4	Sample shot of the sash-and-case window reveals	W
084	Level 4	Cornice detail in the SW corner	Oblique
085-086	Level 4	Cornice detail respecting steel beams	Oblique
087	Level 4	Riveted steel stanchion supporting steel beams	N
088-089	Level 4	Riveted steel stanchion supporting steel beams	W
090	Level 4	Juxtaposition between the head of the stanchion and support beams	Oblique
091	Level 4	Cornice detail between load bearing floor beams	Oblique
092	Level 5	Windows on the N-facing elevation	S
093	Level 5	Interior view of the shop front (Citizens Advice)	E
094	Level 5	Interior S-facing elevation	N
095	Level 5	Fenestration on the E-facing elevation	W
096	Level 5	Blocked Palladian window on the E-facing elevation	Oblique
097-098	Level 5	Blocked Palladian window on the E-facing elevation, general shot	W
099	Level 5	Stone mullion and blocking work on the Palladian window	W
100	Level 5	Riveted stanchion, stencilled <i>Redpath Brown Steel Work</i>	N
101	Level 5	Riveted side of the stanchion and load-bearing beams above	E
102-103	Level 5	General view of a cornice	Oblique
104	Level 5	Cornice overlain by recent blockwork	Oblique
105	Level 5	Curving brown-painted plaster marking the position of a stair on the East-facing elevation	Oblique
106	Level 6	Interior south-facing elevation, general shot	N
107	Level 6	Fenestration on the W-facing elevation	E
108	Level 6	Single window on the N-facing elevation	S
109	Level 6	Wall and staircase plaster, with the remains of a partially stripped staircase	W
110	Level 6	East-facing elevation, fenestration	W
111	Level 6	Stripped out staircase suspended on steelwork	S
112	Level 6	Cornice detail	Oblique
113	Level 7	South-facing elevation, general shot	N
114	Level 7	Fenestration on the N-facing elevation	S
115	Level 7	Fenestration on the W-facing elevation	E
116	Level 7	Fenestration on the N-facing elevation	S
117	Level 7	Boxed in staircase partially stripped	N
118-119	Level 7	Understairs (attic) beaded panel work	Oblique
120	Level 8	Interior W-facing wall with window and blocked fireplace	E
121	Level 8	Bolted angle-iron support frame for the roof	SE
122	Level 8	Bolted angle-iron support frame for the roof	N
123	Level 8	Roof rafters and sarking boards	Oblique
124	Level 8	Attic window on the N-facing elevation	S
125	Level 8	Attic wall, S-facing elevation and plant	N
126	Level 8	Wooden principal rafter and sarking boards	E

127	Level 8	Roof rafter detail	N
128	Level 8	Rough dressed purlin supported by timber props	Oblique
129	Level 8	Attic stairs with balustrade and handrail	W
130-131	Level 8	Attic staircase window	W
132	Staircase	Modern staircase between Levels 6-7	E
133-135	External	South-facing elevation from the Cowgate	N
136	External	South Bridge underside with steel fire-exit door at street level	N
137	External	South Bridge and Blair Street, W-facing elevation with scaffold	E
138	External	South Bridge and Blair Street, W-facing elevation with scaffold	NE
139	External	Blocked window facing Blair Street	S
140	External	Blocked Palladian window at Blair Street level	E
141-142	External	South-facing gable of 85-87 South Bridge	N
143-147	External	East-facing elevation of 85-87 South Bridge	W
148-149	External	South and E-facing elevations of 85-87 Bridge Street	NW



## APPENDIX 2: DISCOVERY & EXCAVATION IN SCOTLAND ENTRY

<b>LOCAL AUTHORITY:</b>	City of Edinburgh Council
<b>PROJECT TITLE/SITE NAME:</b>	85-87 South Bridge, Edinburgh. Archaeological Building Appraisal.
<b>PROJECT CODE:</b>	SOBR
<b>PARISH:</b>	Edinburgh
<b>NAME OF CONTRIBUTOR:</b>	M Cressey
<b>NAME OF ORGANISATION:</b>	CFA Archaeology Ltd
<b>TYPE(S) OF PROJECT:</b>	Historic Buildings Appraisal
<b>NMRS NO(S):</b>	NT27SE 1340
<b>SITE/MONUMENT TYPE(S):</b>	Commercial Building (former tenement)
<b>SIGNIFICANT FINDS:</b>	N/a
<b>NGR</b>	NT 25964 73502
<b>START DATE</b> (this season)	May 2015
<b>END DATE</b> (this season)	May 2015
<b>PREVIOUS WORK</b> (incl. <i>DES</i> ref.)	None
<b>MAIN (NARRATIVE) DESCRIPTION:</b> (May include information from other fields)	An archaeological appraisal survey of 85-87 South Bridge assessed the archaeological and architectural significance of the eight individual levels making up this building. The survey found that the lowest basement level (Level 1) contained five fireplace and the remains of two staircases that were probably in use domestically when the building was a tenement in the late 18 <sup>th</sup> Century. In the 1930s the rest of the building was refurbished significantly to form a suite of offices on all floors (Levels 2-7). The attic space (Level 8) had once been partitioned and contained a blocked fireplace attesting to either domestic or commercial use of this space.
<b>PROPOSED FUTURE WORK:</b>	None
<b>SPONSOR OR FUNDING BODY:</b>	Mr Joe Crolla
<b>ADDRESS OF MAIN CONTRIBUTOR:</b>	CFA Archaeology Ltd, Old Engine House, Eskmills Park, Musselburgh, EH21 7PQ.
<b>EMAIL ADDRESS:</b>	mcessey@cfa-archaeology.co.uk
<b>ARCHIVE LOCATION</b> (intended/deposited)	Archive to be deposited in NMRS, Reports lodged with SMR and NMRS.





**CFA ARCHAEOLOGY LTD**  
 The Old Engine House  
 Eskmills Park  
 Musselburgh  
 East Lothian, EH21 7PQ  
 T: 0131 273 4380  
 F: 0131 273 4381  
 info@cfa-archaeology.co.uk  
 www.cfa-archaeology.co.uk

Title:  
**Site location**

Project:  
**85-87 South Bridge, Edinburgh,  
 Archaeological Building Appraisal**

Fig No:	1	Report:	3302	Drawn by:	GC	CKD:	SW	Date:	01/06/15
Client: <b>Mr Joe Crolla</b>									
Scale: <b>1:5000 @A4</b>									





Key:

- Removed partitions
- Blocked fireplaces
- Blocked windows

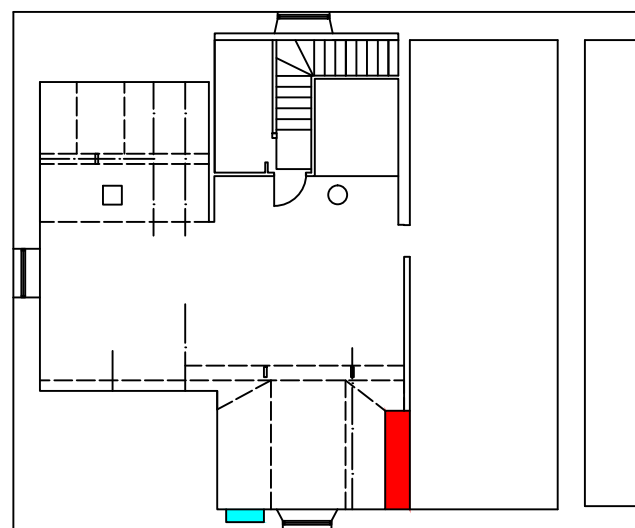


Fig. 2a Level 8

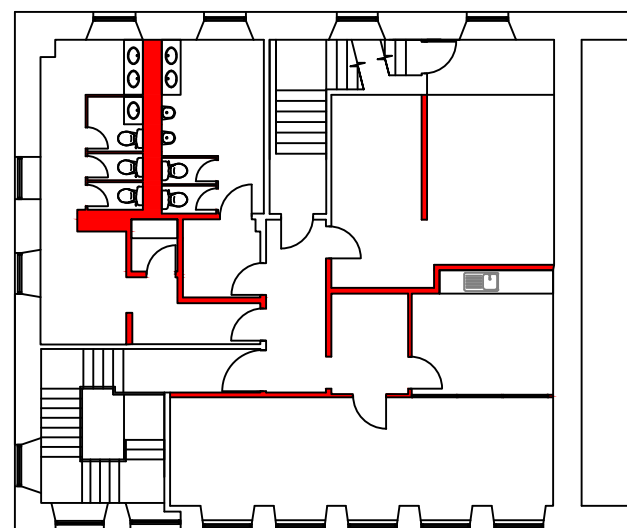


Fig. 2b Level 7

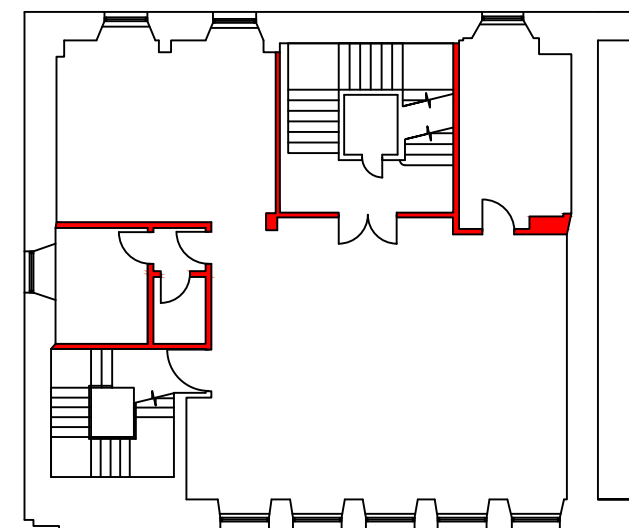


Fig. 2c Level 6

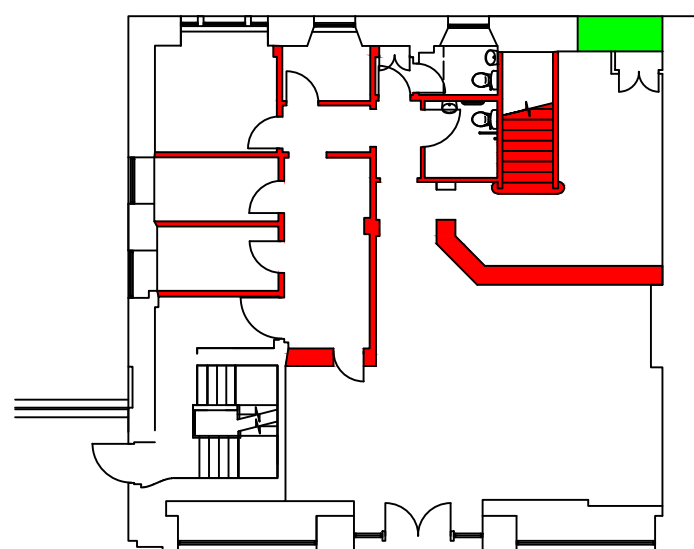


Fig. 2d Level 5

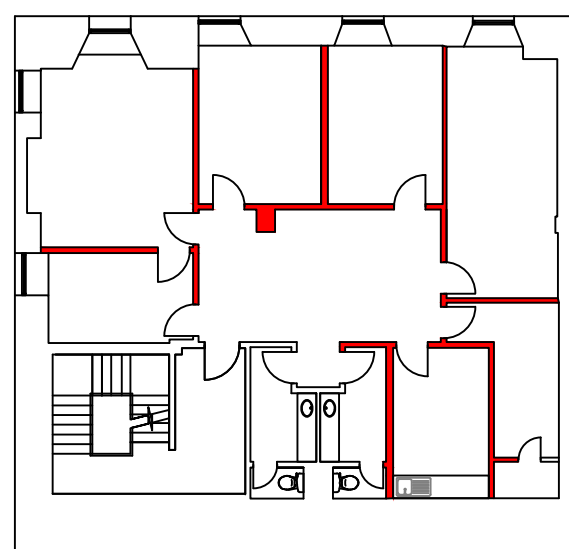


Fig. 2e Level 4

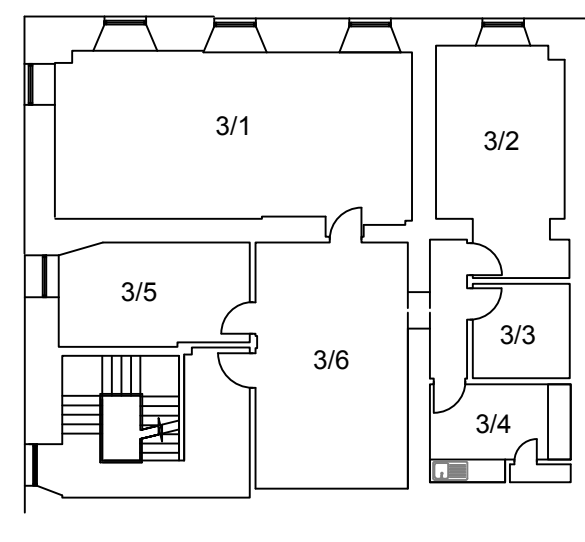


Fig. 2f Level 3

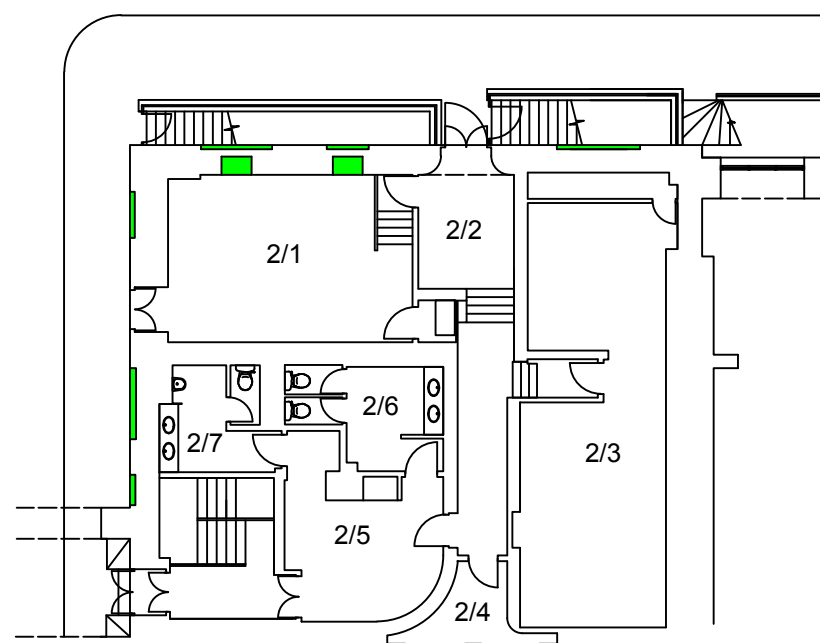


Fig. 2g Level 2

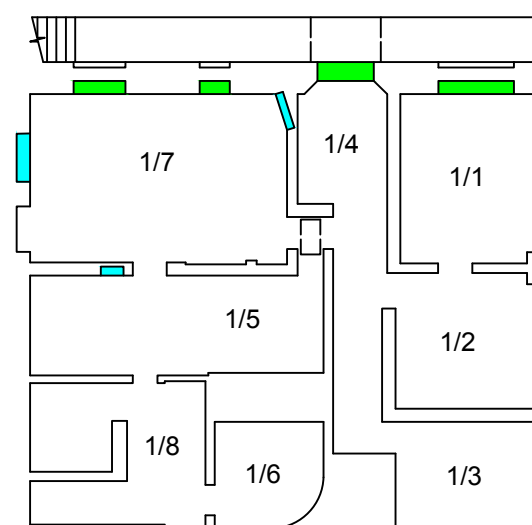


Fig. 2h Level 1



**CFA** ARCHAEOLOGY LTD  
 Old Engine House  
 Eskmills Park  
 Musselburgh  
 East Lothian, EH21 7PQ  
 T: 0131 273 4380  
 F: 0131 273 4381  
 info@cfa-archaeology.co.uk  
 www.cfa-archaeology.co.uk

Fig. No: **2a-h** Report No: **3302**

Title:  
**Internal Floor plans**

Project:  
**85-87 South Bridge,  
 Edinburgh, Archaeological  
 Building Appraisal**

Client:  
**Mr Joe Crolla**

Scale at A3:  
**1:200**

Drawn by: **GC** Checked: **SW** Date: **29/05/2015**

The copyright in this document (including its electronic form) shall remain vested in CFA Archaeology Ltd (CFA) but the Client shall have a licence to copy and use the document for the purpose for which it was provided. CFA shall not be liable for the use by any person of this document for any purpose other than that for which the same was provided by CFA. This document shall not be reproduced in whole or in part or relied upon by third parties for any use whatsoever without the express written authority of CFA.



Key:

- Removed partitions
- Blocked fireplaces
- Blocked windows

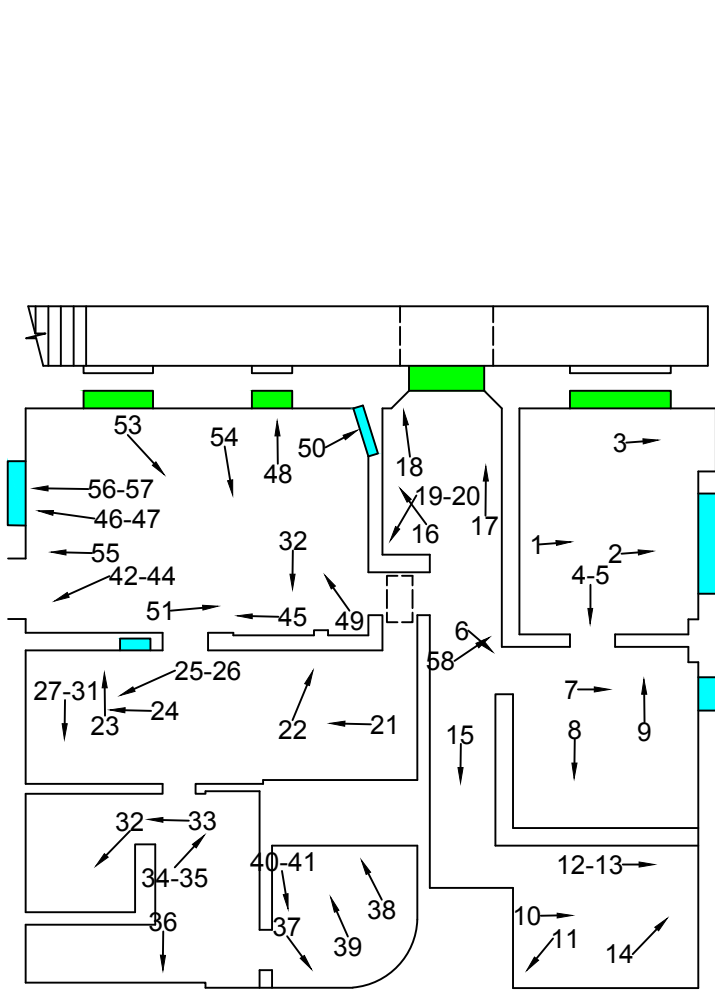


Fig. 3a Level 1

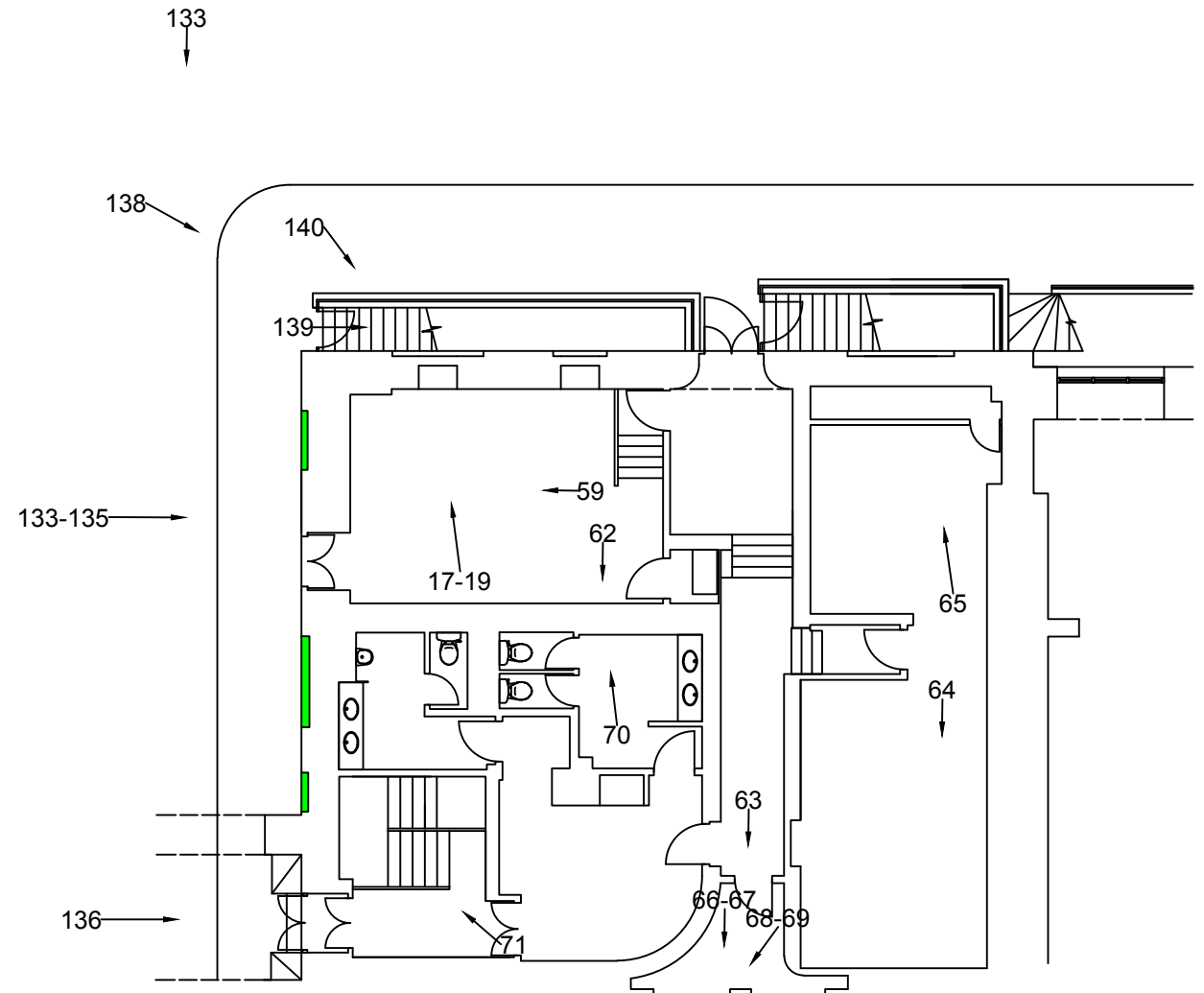


Fig. 3b Level 2

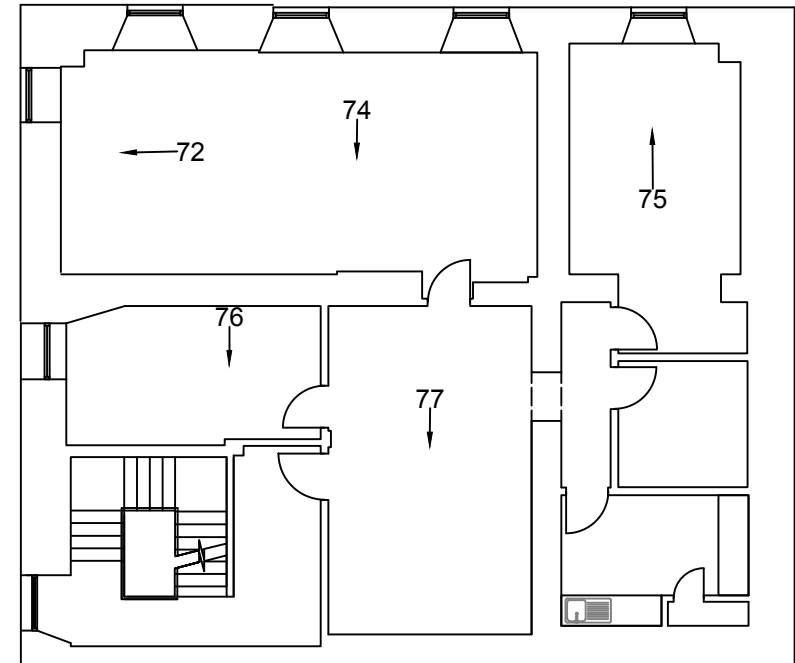


Fig. 3c Level 3

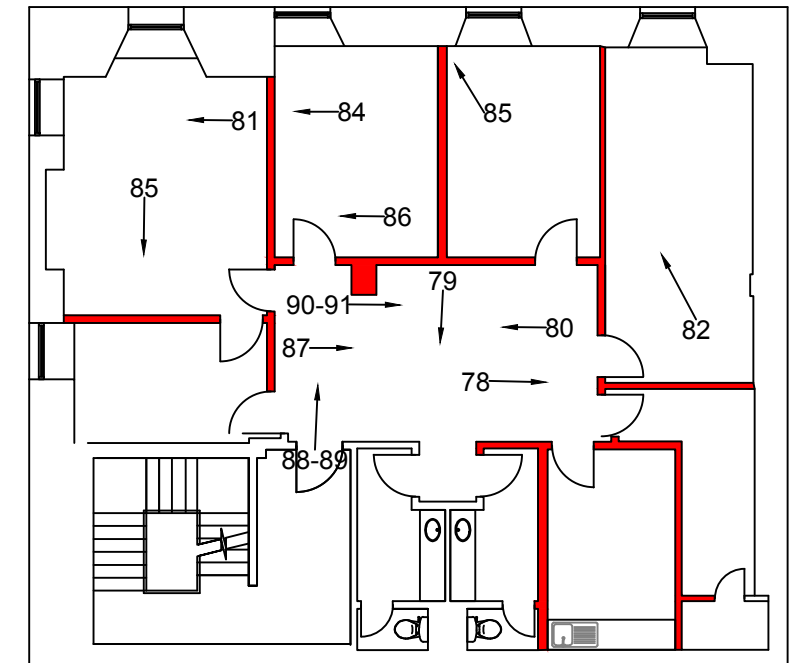


Fig. 3d Level 4

**CFA** ARCHAEOLOGY LTD  
 Old Engine House  
 Eskmills Park  
 Musselburgh  
 East Lothian, EH21 7PQ  
 T: 0131 273 4380  
 F: 0131 273 4381  
 info@cfa-archaeology.co.uk  
 www.cfa-archaeology.co.uk

Fig. No: **3a-d** Report No: **3302**

Title:  
**Photograph locations, Levels 1-4**

Project:  
**85-87 South Bridge, Edinburgh, Archaeological Building Appraisal**

Client:  
**Mr Joe Crolla**

Scale at A3:  
**1:150**

Drawn by: **GC** Checked: **SW** Date: **29/05/2015**

The copyright in this document (including its electronic form) shall remain vested in CFA Archaeology Ltd (CFA) but the Client shall have a licence to copy and use the document for the purpose for which it was provided. CFA shall not be liable for the use by any person of this document for any purpose other than that for which the same was provided by CFA. This document shall not be reproduced in whole or in part or relied upon by third parties for any use whatsoever without the express written authority of CFA.





Key:

- Removed partitions
- Blocked fireplaces
- Blocked windows

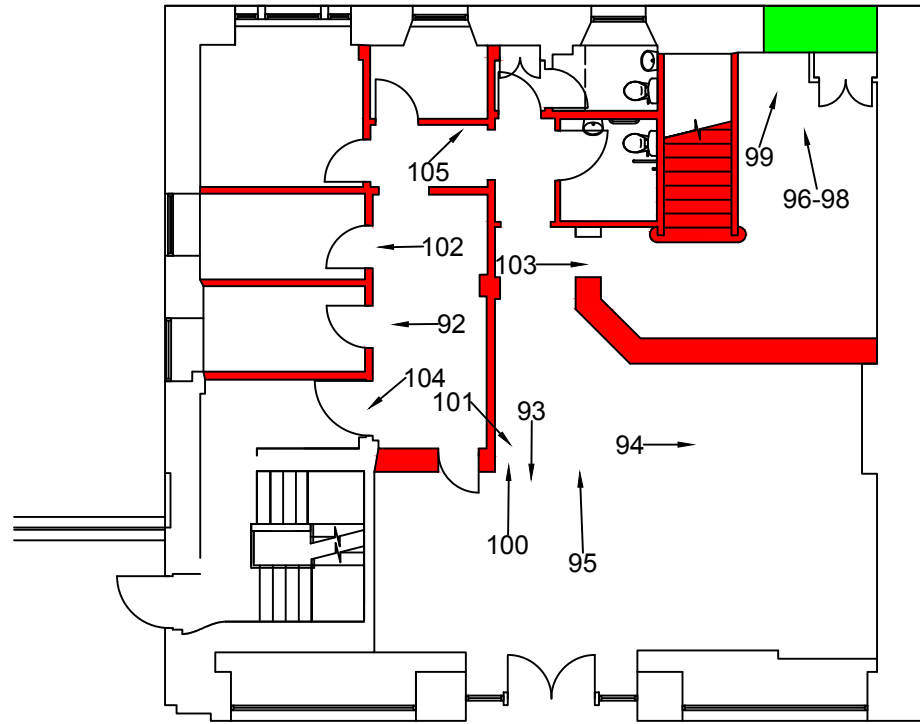


Fig. 3e Level 5

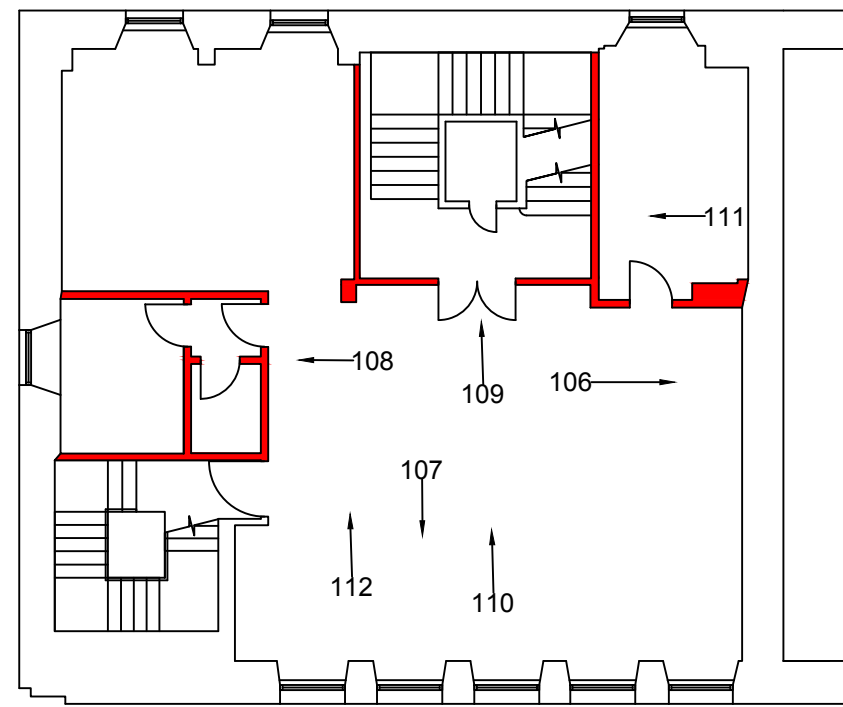


Fig. 3f Level 6

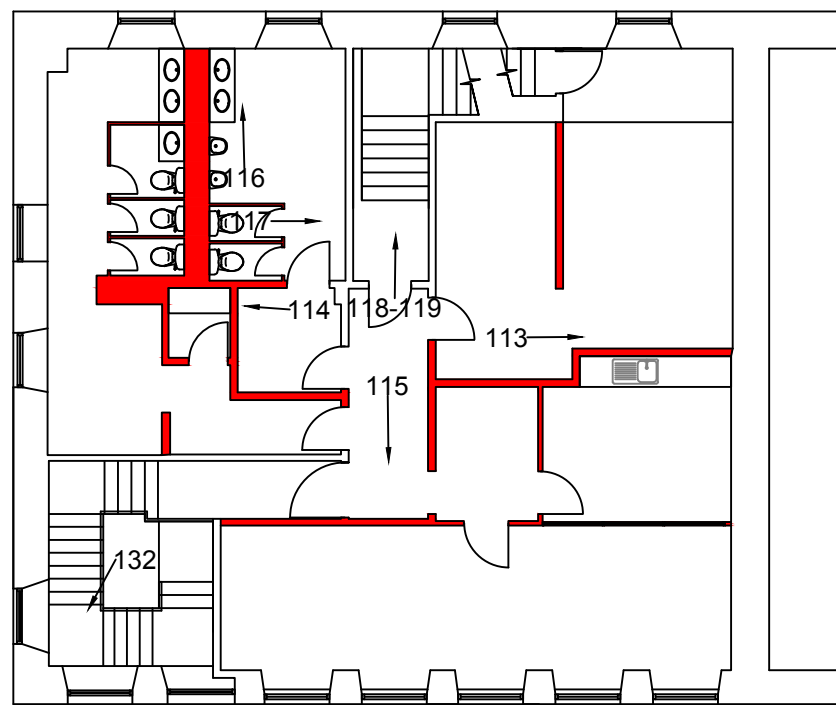


Fig. 3g Level 7

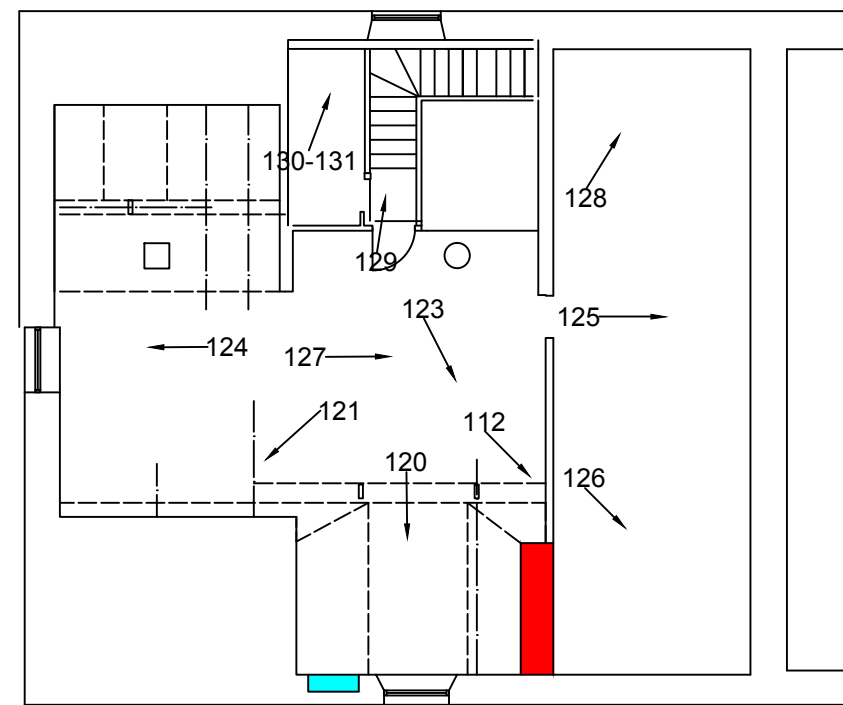


Fig. 3h Level 8

**CFA** ARCHAEOLOGY LTD  
 Old Engine House  
 Eskmills Park  
 Musselburgh  
 East Lothian, EH21 7PQ  
 T: 0131 273 4380  
 F: 0131 273 4381  
 info@cfa-archaeology.co.uk  
 www.cfa-archaeology.co.uk

Fig. No: 3e-h	Report No: 3302
---------------	-----------------

Title:  
**Photograph locations, Levels 5-8**

Project:  
**85-87 South Bridge, Edinburgh, Archaeological Building Appraisal**

Client:  
**Mr Joe Crolla**

Scale at A3:  
**1:150**

Drawn by: GC	Checked: SW	Date: 29/05/2015
--------------	-------------	------------------

The copyright in this document (including its electronic form) shall remain vested in CFA Archaeology Ltd (CFA) but the Client shall have a licence to copy and use the document for the purpose for which it was provided. CFA shall not be liable for the use by any person of this document for any purpose other than that for which the same was provided by CFA. This document shall not be reproduced in whole or in part or relied upon by third parties for any use whatsoever without the express written authority of CFA.





Fig. 4a West-facing elevation, Blair Street



Fig. 4b South-facing elevation, Cowgate



Fig. 4c East-facing elevation, South Bridge

Key:

- Blocked opening
- South Bridge



CFA ARCHAEOLOGY LTD  
 Old Engine House  
 Eskmills Park  
 Musselburgh  
 East Lothian, EH21 7PQ  
 T: 0131 273 4380  
 F: 0131 273 4381  
 info@cfa-archaeology.co.uk  
 www.cfa-archaeology.co.uk

Fig. No: **4a-c** Report No: **3302**

Title:  
**External elevations**

Project:  
**85-87 South Bridge,  
 Edinburgh, Archaeological  
 Building Appraisal**

Client:  
**Mr Joe Crolla**

Scale at A3:  
**1:100**

Drawn by: **GC** Checked: **SW** Date: **29/05/2015**

The copyright in this document (including its electronic form) shall remain vested in CFA Archaeology Ltd (CFA) but the Client shall have a licence to copy and use the document for the purpose for which it was provided. CFA shall not be liable for the use by any person of this document for any purpose other than that for which the same was provided by CFA. This document shall not be reproduced in whole or in part or relied upon by third parties for any use whatsoever without the express written authority of CFA.





Fig. 5 Level 1, Room 1/1 fireplace and press



Fig. 6 Level 1, Room 1/2 remains of the fireplace partially hidden behind rubble



Fig. 7 Level 1, Room 1/4 the remains of stone built stairs



Fig. 8 Level 1, Room 1/5 fireplace



Fig. 9 Level 1, Room 1/6 stonebuilt stairs



Fig. 10 Level 1, Room 1/7 Press and fireplace with re-used stone chinmeybreast



Fig. 11 Level 1, Room 1/7 blocked window and fireplace



Fig. 12 Level 1, Room 1/7 intrusive 1930s steel stanchion



Fig. 13 Level 2, Room 2/1 modern plant room



Fig. 14 Level 2, staircase



Fig. 15 Level 3, Room 3/2 office with window onto Blair Street



Fig. 16 Level 4, Room 1/1 Removed fireplace and surviving ceiling and cornice





Fig. 17 Level 4, fenestration facing onto Blair Street



Fig. 18 Level 4, riveted steel stanchion and supporting steelwork beams above



Fig. 19 Level 5, Interior of the shop front of the former Citizens Advice



Fig. 20 Level 5, blocked Palladian window formerly facing onto Blair Street



Fig. 21 Level 6, fenestration facing onto Blair Street with suspended staircase



Fig. 22 Level 7, fenestration looking onto South Bridge



Fig. 23 Level 7, boxed in 1930s staircase exposed within modern cladding



Fig. 24 Level 8, attic window facing onto South Bridge and a blocked fireplace



Fig. 25 Level 8, attic rafters supported by steel bracing work



Fig. 26 Level 8, early timber purlin supported by timber props



Fig. 27 Exterior south-facing elevation, general shot



Fig. 28 Exterior south-west corner of Blair Street and the Cowgate



Fig. 29 Exterior south-facing elevation seen from South Bridge



Fig. 30 Exterior east-facing elevation facing South Bridge



Fig. 31 Exterior south-east corner of 85-87 South Bridge

**CFA** ARCHAEOLOGY LTD  
 Old Engine House  
 Eskmills Park  
 Musselburgh  
 East Lothian, EH21 7PQ  
 T: 0131 273 4380  
 F: 0131 273 4381  
 info@cfa-archaeology.co.uk  
 www.cfa-archaeology.co.uk

Fig. No:	29-31	Report:	3302
Title			
Project			
85-87 South Bridge, Edinburgh, Archaeological Building Appraisal			
Client			
Mr Joe Crolla			
Scale at A3			
Drawn by:	Checked by:	Date:	
GC	SW	09/06/15	

The copyright in this document (including its electronic form) shall remain vested in CFA Archaeology Ltd (CFA) but the Client shall have a licence to copy and use the document for the purpose for which it was provided. CFA shall not be liable for the use by any person of this document for any purpose other than that for which the same was provided by CFA. This document shall not be reproduced in whole or in part or relied upon by third parties for any use whatsoever without the express written authority of CFA.



SOBR\_001.jpg



SOBR\_002.jpg



SOBR\_003.jpg



SOBR\_004.jpg



SOBR\_005.jpg



SOBR\_006.jpg



SOBR\_007.jpg



SOBR\_008.jpg



SOBR\_009.jpg



SOBR\_010.jpg



SOBR\_011.jpg



SOBR\_012.jpg



SOBR\_013.jpg



SOBR\_014.jpg



SOBR\_015.jpg



SOBR\_016.jpg



SOBR\_017.jpg



SOBR\_018.jpg



SOBR\_019.jpg



SOBR\_020.jpg



SOBR\_021.jpg



SOBR\_022.jpg



SOBR\_023.jpg



SOBR\_024.jpg



SOBR\_025.jpg



SOBR\_026.jpg



SOBR\_027.jpg



SOBR\_028.jpg



SOBR\_029.jpg



SOBR\_030.jpg



SOBR\_031.jpg



SOBR\_032.jpg



SOBR\_033.jpg



SOBR\_034.jpg



SOBR\_035.jpg



SOBR\_036.jpg



SOBR\_037.jpg



SOBR\_038.jpg



SOBR\_039.jpg



SOBR\_040.jpg



SOBR\_041.jpg



SOBR\_042.jpg



SOBR\_043.jpg



SOBR\_044.jpg



SOBR\_045.jpg



SOBR\_046.jpg



SOBR\_047.jpg



SOBR\_048.jpg



SOBR\_049.jpg



SOBR\_050.jpg



SOBR\_051.jpg



SOBR\_052.jpg



SOBR\_053.jpg



SOBR\_054.jpg



SOBR\_055.jpg



SOBR\_056.jpg



SOBR\_057.jpg



SOBR\_058.jpg



SOBR\_059.jpg



SOBR\_060.jpg



SOBR\_061.jpg



SOBR\_062.jpg



SOBR\_063.jpg



SOBR\_064.jpg



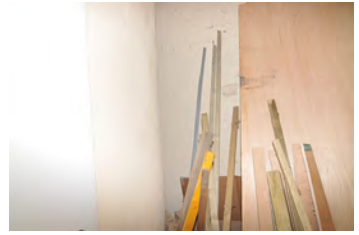
SOBR\_065.jpg



SOBR\_066.jpg



SOBR\_067.jpg



SOBR\_068.jpg



SOBR\_069.jpg



SOBR\_070.jpg



SOBR\_071.jpg



SOBR\_072.jpg



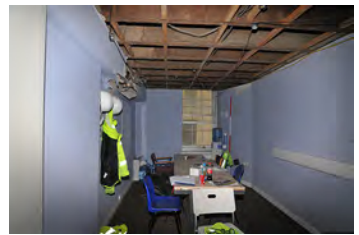
SOBR\_073.jpg



SOBR\_074.jpg



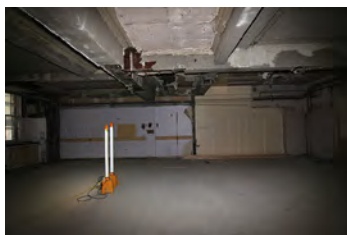
SOBR\_075.jpg



SOBR\_076.jpg



SOBR\_077.jpg



SOBR\_078.jpg



SOBR\_079.jpg



SOBR\_080.jpg



SOBR\_081.jpg



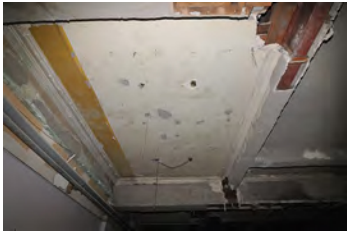
SOBR\_082.jpg



SOBR\_083.jpg



SOBR\_084.jpg



SOBR\_085.jpg



SOBR\_086.jpg



SOBR\_087.jpg



SOBR\_088.jpg



SOBR\_089.jpg



SOBR\_090.jpg



SOBR\_091.jpg



SOBR\_092.jpg



SOBR\_093.jpg



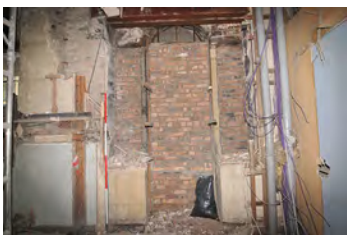
SOBR\_094.jpg



SOBR\_095.jpg



SOBR\_096.jpg



SOBR\_097.jpg



SOBR\_098.jpg

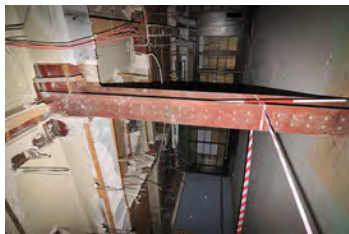


SOBR\_099.jpg



SOBR\_100.jpg

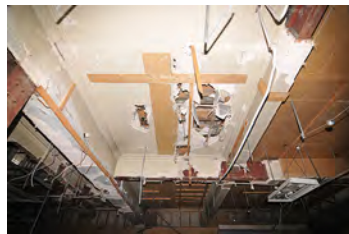




SOBR\_101.jpg



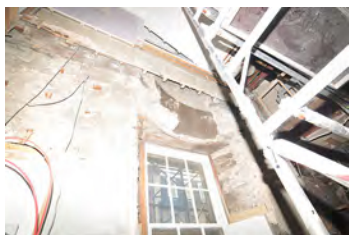
SOBR\_102.jpg



SOBR\_103.jpg



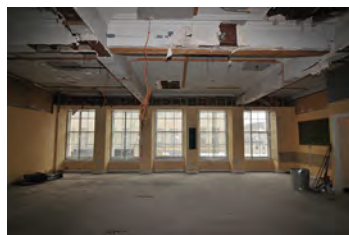
SOBR\_104.jpg



SOBR\_105.jpg



SOBR\_106.jpg



SOBR\_107.jpg



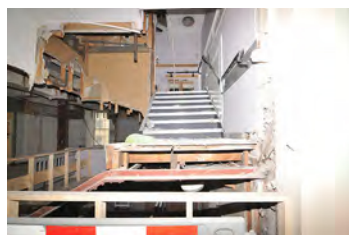
SOBR\_108.jpg



SOBR\_109.jpg



SOBR\_110.jpg



SOBR\_111.jpg



SOBR\_112.jpg



SOBR\_113.jpg



SOBR\_114.jpg



SOBR\_115.jpg



SOBR\_116.jpg



SOBR\_117.jpg



SOBR\_118.jpg



SOBR\_119.jpg



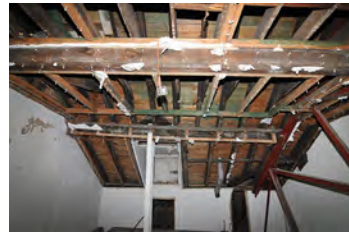
SOBR\_120.jpg



SOBR\_121.jpg



SOBR\_122.jpg



SOBR\_123.jpg



SOBR\_124.jpg



SOBR\_125.jpg



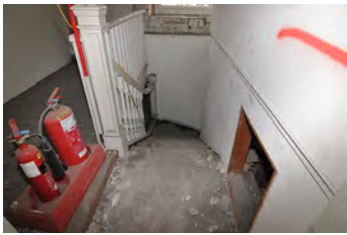
SOBR\_126.jpg



SOBR\_127.jpg



SOBR\_128.jpg



SOBR\_129.jpg



SOBR\_130.jpg



SOBR\_131.jpg



SOBR\_132.jpg



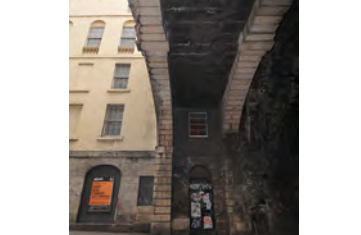
SOBR\_133.jpg



SOBR\_134.jpg



SOBR\_135.jpg



SOBR\_136.jpg



SOBR\_137.jpg



SOBR\_138.jpg



SOBR\_139.jpg



SOBR\_140.jpg



SOBR\_141.jpg



SOBR\_142.jpg



SOBR\_143.jpg



SOBR\_144.jpg



SOBR\_145.jpg



SOBR\_146.jpg



SOBR\_147.jpg



SOBR\_148.jpg



SOBR\_149.jpg