

CFA Archaeology Ltd

archaeological consultants

Advice on Archaeology & Planning

Environmental Impact Assessment

Interpretation, Design & Display

Finds/ Environmental Analysis

Field Evaluation & Excavation


Historic Building Recording


Site & Landscape Survey

Geophysical Survey

Spoutscross Farm, North Lanarkshire Buildings Appraisal

Report No. 3359

 0131 273 4380

 0131 273 4381

 info@cfa-archaeology.co.uk

 www.cfa-archaeology.co.uk

CFA ARCHAEOLOGY LTD

The Old Engine House
Eskmills Business Park
Musselburgh
East Lothian
EH21 7PQ

Tel: 0131 273 4380
Fax: 0131 273 4381
email: info@cfa-archaeology.co.uk
web: www.cfa-archaeology.co.uk

Author	Michael Cressey BA MSc PhD MCIfA FSA Scot
Illustrator	Greame Carruthers MA MCIfA
Editor	Bruce Glendinning BSc Pg Dip MCIfA
Commissioned by	Scottish Power Renewables.
Date issued	November 2015
Version	1
Oasis Ref No.	cfaarcha1-230868
Grid Reference No.	NS 89842 56272

This document has been prepared in accordance with CFA Archaeology Ltd
standard operating procedures.

**Spoutscross Farm, North Lanarkshire
Buildings Appraisal**

Report No. 3359

CONTENTS

1.	Introduction	3
2.	Methodology	3
3.	Desk Based Assessment	3
4.	Site Appraisal Results	4
5.	Conclusion	6
6.	References	6
	Appendix 1 Photographic Record	7

Illustrations (bound at rear)

1	General location and site layout plans
2a-e	Historical map regression
3	North-facing elevation of the cottage
4	West-facing elevation of the cottage
5	South-facing elevation of the cottage
6	Unit 1 bedroom interior north-facing elevation
7	Unit 2 Dining room, west-facing entrance
8	Unit 3, Kitchen, north-facing entrance
9	Unit 4, Living room, north-facing window
10	Wooden staircase between Units 3 and 5
11	Unit 5, bedroom, north-facing window
12	Unit 6, bedroom, south-facing window
13	Unit 7, bathroom, east-facing elevation
14	Unit 8 and 9 Outhouse and byre, north-facing elevation
15	Unit 9, byre stalls on the north-facing elevation
16	Unit 11, timber-framed barn, north-facing elevation
17	Unit 12, steel-framed animal shed, west-facing elevation
18	Unit 12, steel-framed shed, north-facing gable
19	Unit 12, interior of the steel-framed shed facing, south-east corner
20	Unit 16, interior of the steel-framed shed, north end
21	Unit 17, derelict concrete shed, east-facing elevation
22	Unit 18, roofless stone-built structure, east-facing elevation

1. INTRODUCTION

This report was commissioned by Scottish Power Renewables to undertake an archaeological standing building appraisal at Spoutscross Farm, North Lanarkshire. Spoutscross (NGR: NS 89842 562723) lies at the end of the Dura Road leading from the village of Allanton, North Lanarkshire. The site lies within the proposed Black Law Windfarm Extension Phase 2. The farmstead has been unoccupied since 2012 and is in a derelict state.

2. METHODOLOGY

Up-to-date information on the site was sought from the Royal Commission for the Ancient and Historical Monuments of Scotland (RCAHMS) and the Sites and Monuments Record (SMR), through the use of Pastmap.

Ordnance Survey maps and other early maps held by the Map Library of the National Library of Scotland were examined to identify the earliest mapped occurrence of the site and its evolution through time.

A site appraisal visit was conducted on 4 November 2015 by Dr Mike Cressey, Project Manager for Standing Building Survey at CFA Archaeology Ltd. Measurements were obtained using a hand-held Leica distometer. High resolution digital photographs were obtained using a Nikon D300. The photographs taken are listed in Appendix 1 and the orientation of each is shown on Fig 1.

3. DESK BASED ASSESSMENT

3.1 Cartographic Sources

The earliest cartographic sources Forrest (1816) and Thompson (1822) (Figs 2a-b) showed the geographic location of the farm but did not specifically identify it, although the resolution of the mapping was very small scale.

The Ordnance Survey 25 inch 1st Edition of 1859 (Fig 2c) depicted the farm in detail. It is depicted as a rectangular cottage and rectilinear byre aligned east-west with a small detached building on its south side. Situated to the north-east was a detached building aligned north-south. A small detached building was shown on its east side.

The Ordnance Survey 25-inch 2nd Edition of 1897 (Fig 2d) shows the farm had changed to an L-shaped footprint by adding a small building to the east end of the byre. The cottage is shown with a porch attached on its north side. The cottage was attached to the byre. The easternmost building had a horse gin added to its eastern side. Similarly a horse engine had been added to the south side of the byre. On the north side of the track leading to Spoutscross there was a small square building depicted.

The Ordnance Survey 25-inch 3rd Edition of 1912 (Fig 2e) showed the same building layout apart from a small addition on the north-east corner of the easternmost building.

Later Ordnance Survey map editions showed the same building footprint as it stands today.

3.2 RCAHMS & Sites and Monuments Record

The RCAHMS database and SMR contained no records for this site.

3.3 Listed Buildings and Scheduled Ancient Monuments

The site is not a Listed Building or a Scheduled Ancient Monument.

4. SITE APPRAISAL RESULTS

Spoutscross Farm (Fig 1) occupied an L-shaped footprint with outshot buildings on the south-facing and north-facing elevations. Table 1 lists the various units making up the building complex with individual function and dimensions.

Unit No	Function	Dimensions LxB
1	Cottage Bedroom	5m x 5.5m
2	Cottage Dining room	5.7m x 3.3m
3	Cottage Kitchen	4m x 3m
4	Cottage Living room	4.8m x 4.2m
5	Cottage Bedroom	3.6m x 2.9m
6	Cottage Bedroom	4.8m x 3m
7	Cottage Bathroom and entrance	3.8m x 2m
8	Outhouse	10m x 3m
9	Byre	12m x 4m
10	Byre	5.2m x 4.1m
11	Timber-framed barn	6.9m x 4.9m
12	Animal shed	9.6m x 8.5m
13	Animal shed	9.6m x 4.6m
14	Animal pen	5.9m x 3.4m
15	Animal pen	5.5m x 3.4m
16	Store room	6m x 5.2m
17	Derelict concrete shed	17.5m x 10m
18	Roofless stone-built structure	7.5m x 4.5m

Table 1 Unit No. function and dimensions

4.1 Architectural descriptions

Cottage (Units 1-7), (Figs 3-4)

The farm cottage was situated at the east end of the main range of buildings and comprised a single storey with attic. The building measured 15m by 6m and was stone-built and had been rendered with whitewashed cement. The roof was grey slate with sandstone ridge copings surmounted by a chimney stack at each end. The west gable was harled and featureless. The south-facing elevation had two outshot additions (Units 1 and 2). At the centre of the north-facing elevation is an outshot porch with bathroom. This was a modern flat-roof addition dating from the 1980s. The windows throughout were all modern PVC insertions.

The cottage had seven interior units comprising three bedrooms (Units 1, 5-6) a dining room (Unit 2) and living room (Unit 4), a kitchen (Unit 3) and bathroom (Unit 7), (Figs 6-13). The west-facing wall of the kitchen contained a wide press that had once been a doorway into the byre. Between the living room and bedroom (Unit 5) was a central wooden box staircase leading to the attic (Fig 10). The staircase was an original 19th century feature. The attic was open-plan and featureless. The rafters were completely hidden behind plasterboard.

Outhouse (Unit 8), (Fig 14)

Outshot off the north-facing elevation of the byre (Unit 9) was an outbuilding measuring 10m by 3.7m with a slate covered hipped roof. The walls were rendered with pebble-dash. The interior of the building comprised three small rooms and each with an entrance door facing west. The southernmost room was the only room of interest as it contained a blocked doorway leading into the byre. The outhouse was mid 20th century in date and was probably used for the storage of farm and domestic equipment.

Byre (Units 9-10), (Fig 14-15)

Attached to the east gable of the cottage was a stone-built byre (Units 9-10). The byre measured 15m long by 4.9m wide and its external walls were whitewashed. The byre roof comprised both concrete pan tiles and corrugated sheeting. Two plank-built doors were present on the north-facing elevation (Fig 14). The south-facing elevation had a single plank-built door.

The interior of the byre (Unit 9) contained nine stalls situated along the south side of the building (Fig 15). The floor was concrete with a central drain. A blocked door situated on the east gable once allowed direct access to the kitchen in the cottage (Unit 3). A smaller byre (Unit 10) was situated at the east end of Unit 9 and contained only three stalls (Fig 1).

Timber-framed barn (Unit 11)

At the east end of the byre was a timber framed hay barn (Unit 11) measuring 6.9m x 4.9m. It had a cat-slide roof clad with steel sheeting (Fig 16).

Steel-framed sheds (Units 12-16), (Figs 17-20)

On the east side of the barn stood a long steel-framed agricultural shed measuring 20m x 4m with a composite steel roof carried on a series of I-beams and roofed with corrugated steel sheeting. The building was open-sided at its south end. The rest of the building was harled brick with a large bay opening into Unit 13. Unit 16 situated at the north end of the building was accessed by a sliding door and lit by two steel-framed windows. The shed had been compartmentalised with the installation of brick-built stables (Units 14 and 15). Both gables were brick-built (Fig 18).

Derelict Concrete Shed (Unit 17), (Fig 21)

Situated on the east side of the steel-framed shed was a part demolished building constructed of shuttered concrete measuring. The northern half of the building was roofless, the middle section had been completely demolished and the southernmost section was intact with a low pitched asbestos covered roof. This section of the building had two boarded-up windows.

Roofless stone-built structure (Unit 18)

A roofless stone-built building (Fig 22) was situated on the north side of the farmstead. The building was rubble-built with rough-dressed sandstone quoins and was probably an animal house.

5. CONCLUSION

The farm cottage originally occupied a simple two-roomed plan with a central box staircase. The cottage and the stone-built byre were once connected. Lately the cottage has been modernised throughout with the addition of modern wall claddings, PVC windows and a bathroom with an entrance porch on its south side. The interior of the byre had also been altered with the installation of cattle stalls sometime in the 20th century. The rest of the agricultural buildings probably date to no earlier than the 1940s or 1950s and are of no architectural interest.

Spoutscross Farm is very typical of the North Lanarkshire vernacular architecture dating from the early 19th century.

6. REFERENCES

Ordnance Survey 1859 *1st Edition Lanark Sheet XIX.3 (Cambusnethen)* 25 inch to 1 mile.

Ordnance Survey 1897 *2nd Edition Lanarkshire Sheet 019.03* 25 inch to 1 mile.

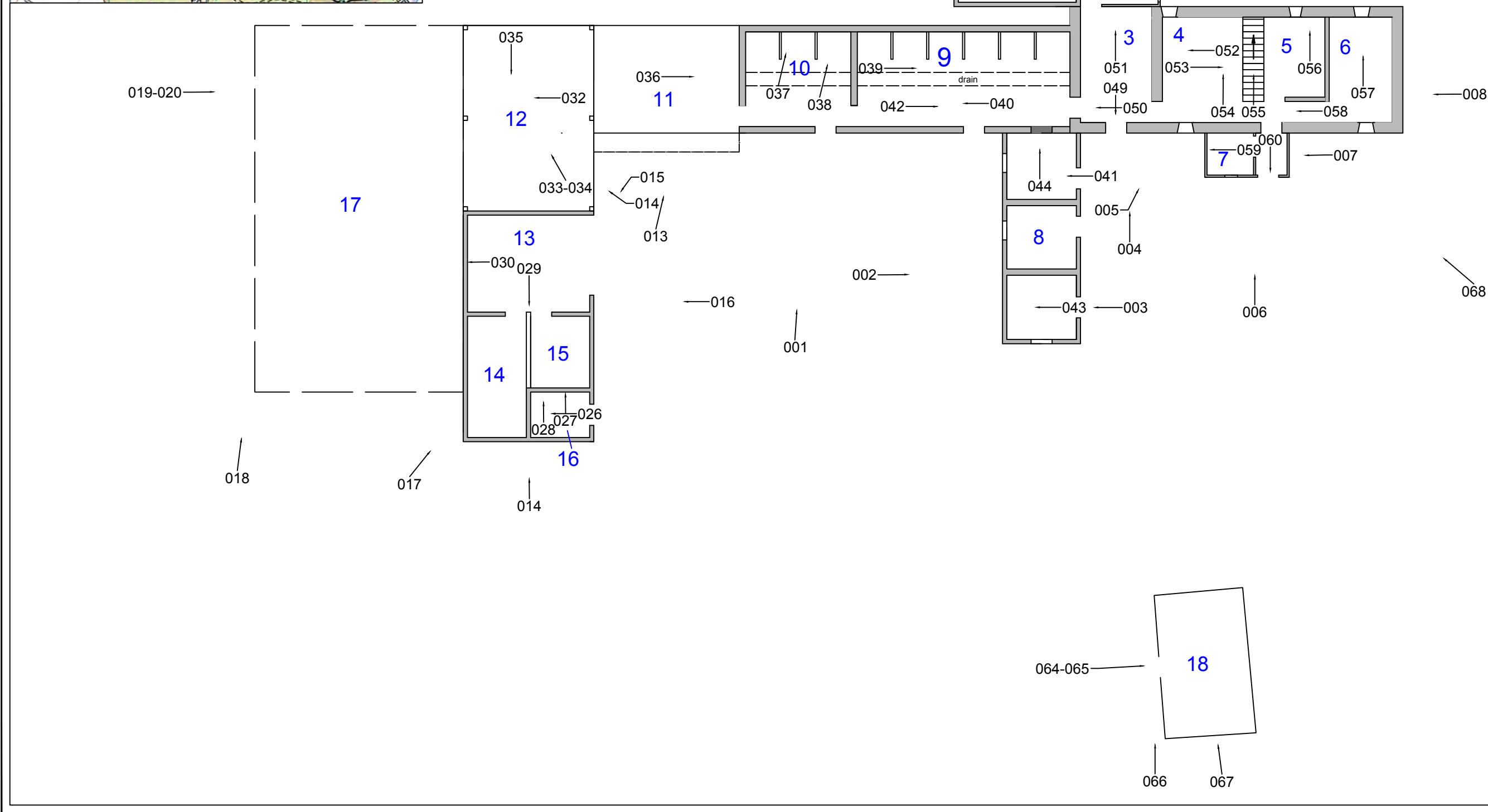
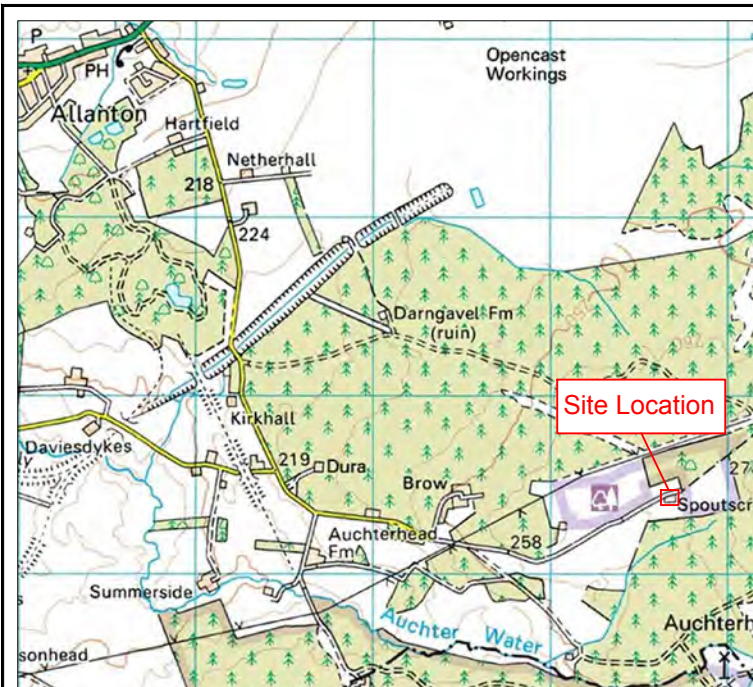
Ordnance Survey 1912 *3rd Edition Lanarkshire Sheet 019.03* 25 inch to 1 mile.

Thomson, J 1832 *Atlas of Scotland, Northern Part of Ayrshire, Southern Part*

APPENDIX 1: PHOTOGRAPHIC REGISTER

Photo No	Summary description	Facing
001	External N-facing elevation of Spoutscross Farm	S
002	External E-facing elevation of Unit 8	W
003	External E-facing elevation of Unit 8	W
004	External N facing elevation of the cottage (W end)	S
005	Oblique view of the W gable coping stones	Oblique
006	External N-facing elevation of the cottage	S
007	External W-facing elevation of the porch (Unit 7)	E
008	External E-facing gable of the cottage	W
009	External S-facing elevation of the cottage	N
010	External W-facing corner of Unit 2	E
011-12	External S-facing elevation of Unit 1 bedroom	N
013	External N-facing elevation of the hay barn, (Unit 11)	S
14	External N-facing elevation of steel-framed shed	S
15	External W-facing elevation of the steel-framed shed (S end)	SW
16	External W-facing elevation of the steel-framed shed	E
17	External NE corner of the steel-framed shed	SW
18	External NE-corner of the ruined shed (Unit 17)	SW
19-20	External E-facing elevation of S end of Unit 7	W
21	External S-facing elevation of sheds (Units 11-12, & 17)	N
22	External S-facing elevation of Spoutscross Farm	NE
23	General view of Spoutscross Farm	N
24	General view of Spoutscross Farm, W end	N
25	General view of Spoutscross Farm, E end	N
26	Interior view of Unit 6	E
27	Interior view of Unit 6, fenestration	W
28	Interior view of steel-framed roof trusses, Unit 6	S
29	Interior view of animal pens (Units 14-15)	N
30-31	Interior view of the steel-framed shed (Unit 13)	E
32	Interior view of the steel-framed shed (Unit 12)	E
33-34	Interior view of the steel-framed shed (Unit 12)	SW
35	Interior view of the steel-framed shed (Unit 12)	N
36	External E-facing gable of the byre (Unit 10)	E
37	Interior N-facing elevation, byre, E end	S
38	Interior cattle stalls, (Unit 10)	SE
39	Interior of the byre, stalls and central drain (Unit 9)	W
40	Interior of the byre, stalls and central drain (Unit 9)	E
41	Interior of fabric detail, S end (Unit 8)	E
42	Interior of the byre, blocked door to cottage (Unit 9)	W
43	Interior of, N end (Unit 8)	W
44	Internal N-facing elevation within Unit 8, blocked door to the byre (Unit 9)	SE
45	Interior of the bedroom (Unit 1)	E
46	Interior of the bedroom (Unit 1)	SE
47	Interior of the dining room (Unit 2)	SW
48	Interior E-facing elevation, door and window (Unit 2)	W
49	Interior S-facing elevation of the kitchen (Unit 3)	N

Photo No	Summary description	Facing
50	Interior W-facing elevation of the kitchen (Unit 3)	E
51	Interior N-facing elevation of the kitchen (Unit 3)	S
52	Interior W-facing fireplace in the sitting room (Unit 4)	E
53	Interior E-facing elevation of the sitting room (Unit 4)	W
54	Interior N-facing elevation of the sitting room (Unit 4)	S
55	General shot looking up the staircase	S
56	Interior N-facing elevation in bedroom (Unit 4)	S
57	Interior N-facing elevation in bedroom (Unit 6)	S
58	Interior view within the hall of the cottage	E
59	Interior view of the bathroom (Unit 7)	E
60	Interior view of the main door to the cottage	N
61-62	Interior view of the attic space	W
63-67	Exterior elevations of a ruined building	S, E & N
68	Distance view of Spoutscross Farm Cottage	E



Key:

- Walls
- Blocked opening
- Photo number and direction
- Unit number

CFA ARCHAEOLOGY LTD
Old Engine House
Eskmills Park
Musselburgh
East Lothian, EH21 7PQ
T: 0131 273 4380
F: 0131 273 4381
info@cfa-archaeology.co.uk
www.cfa-archaeology.co.uk

Fig. No:	1	Report No:	0
Title: Site locaton and plan			
Project: Spoutscross Farm, North Lanarkshire, Building Appraisal			
Client: Scottish Power Renewables			
Scale at A3: 1:200			
Drawn by:	GC	Checked:	MC
		Date:	13/11/2015
The copyright in this document (including its electronic form) shall remain vested in CFA Archaeology Ltd (CFA) but the Client shall have a licence to copy and use the document for the purpose for which it was provided. CFA shall not be liable for the use by any person of this document for any purpose other than that for which the same was provided by CFA. This document shall not be reproduced in whole or in part or relied upon by third parties for any use whatsoever without the express written authority of CFA.			

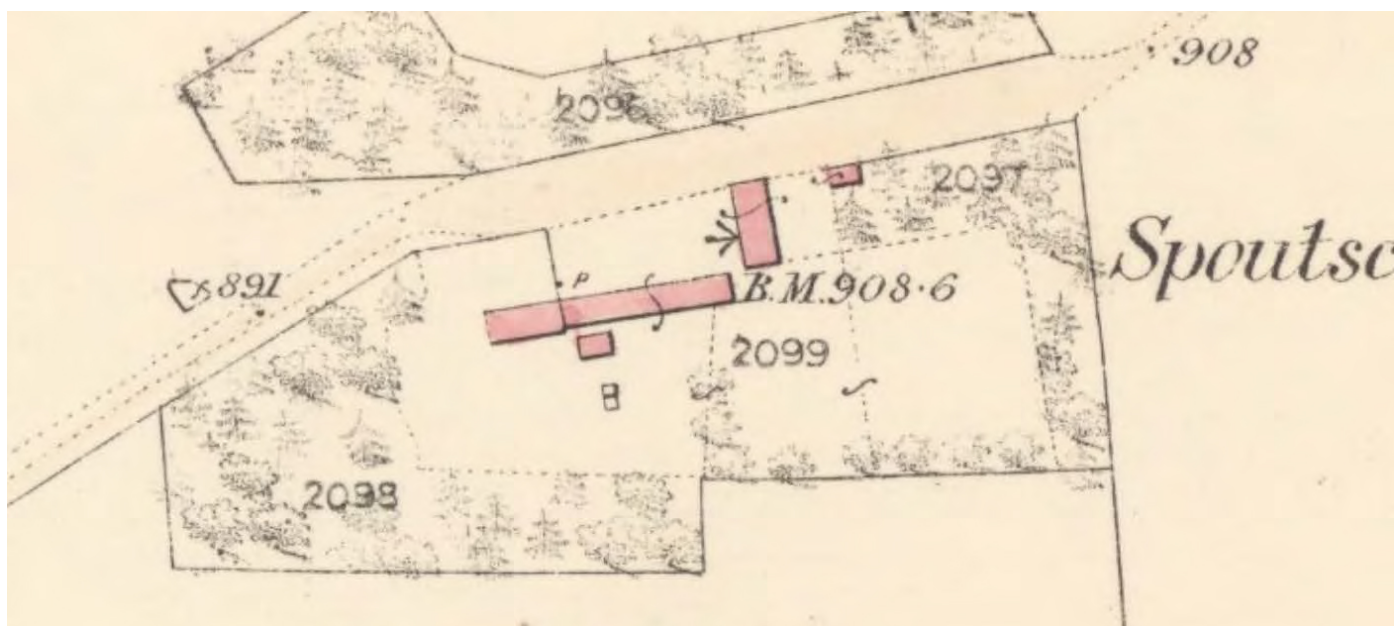


Fig. 2c Map by Ordnance Survey, 1856

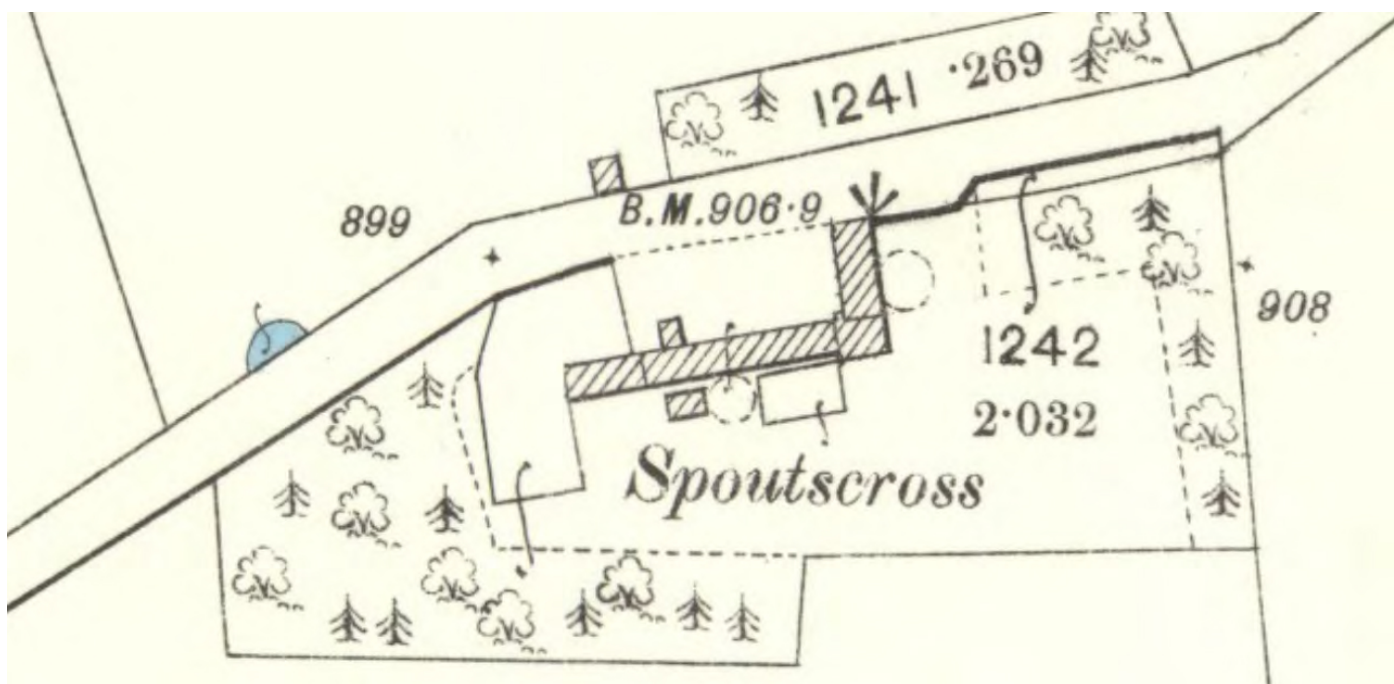


Fig. 2d Map by Ordnance Survey, 1897



CFA ARCHAEOLOGY LTD
 Old Engine House
 Eskmills Park
 Musselburgh
 East Lothian, EH21 7PQ
 T: 0131 273 4380
 F: 0131 273 4381
 info@cfa-archaeology.co.uk
 www.cfa-archaeology.co.uk

Title:	Fig. 2c - 2d	Report: 3359	Drawn: GC	CKD: MC	Date: 30/11/15
Project:	Client: Scottish Power Renewables Spoutscross Farm, North Lanarkshire, Buildings Appraisal				



Fig. 2e Map by Ordnance Survey, 1912



Fig. 3 North-facing elevation of the cottage



CFA ARCHAEOLOGY LTD
 Old Engine House
 Eskmills Park
 Musselburgh
 East Lothian, EH21 7PQ
 T: 0131 273 4380
 F: 0131 273 4381
 info@cfa-archaeology.co.uk
 www.cfa-archaeology.co.uk

Title:	Fig. 2e - 3	Report: 3359	Drawn: GC	CKD: MC	Date: 30/11/15
Client: Scottish Power Renewables					
Project: Spoutscross Farm, North Lanarkshire, Buildings Appraisal					



Fig. 4 West-facing elevation of the cottage



Fig. 5 South-facing elevation of the cottage



CFA ARCHAEOLOGY LTD
 Old Engine House
 Eskmills Park
 Musselburgh
 East Lothian, EH21 7PQ
 T: 0131 273 4380
 F: 0131 273 4381
 info@cfa-archaeology.co.uk
 www.cfa-archaeology.co.uk

Title:	Fig. 4 - 5	Report: 3359	Drawn: GC	CKD: MC	Date: 30/11/15
	Client: Scottish Power Renewables				
Project: Spoutcross Farm, North Lanarkshire, Buildings Appraisal					



Fig. 6 Unit 1 bedroom interior north-facing elevation



Fig. 7 Unit 2 Dining room, west-facing entrance



CFA ARCHAEOLOGY LTD
 Old Engine House
 Eskmills Park
 Musselburgh
 East Lothian, EH21 7PQ
 T: 0131 273 4380
 F: 0131 273 4381
 info@cfa-archaeology.co.uk
 www.cfa-archaeology.co.uk

Title:	Fig. 6 - 7	Report: 3359	Drawn: GC	CKD: MC	Date: 30/11/15
Client: Scottish Power Renewables					
Project: Spoutcross Farm, North Lanarkshire, Buildings Appraisal					



Fig. 8 Unit 3, Kitchen, north-facing entrance



Fig. 9 Unit 4, Living room, north-facing window



CFA ARCHAEOLOGY LTD
 Old Engine House
 Eskmills Park
 Musselburgh
 East Lothian, EH21 7PQ
 T: 0131 273 4380
 F: 0131 273 4381
 info@cfa-archaeology.co.uk
 www.cfa-archaeology.co.uk

Title:	Fig. 8 - 9	Report: 3359	Drawn: GC	CKD: MC	Date: 30/11/15
	Client: Scottish Power Renewables				
Project: Spoutcross Farm, North Lanarkshire, Buildings Appraisal					



Fig. 10 Wooden staircase between Units 3 and 5



Fig. 11 Unit 5, bedroom, north-facing window



CFA ARCHAEOLOGY LTD
 Old Engine House
 Eskmills Park
 Musselburgh
 East Lothian, EH21 7PQ
 T: 0131 273 4380
 F: 0131 273 4381
 info@cfa-archaeology.co.uk
 www.cfa-archaeology.co.uk

Title:	Fig. 10 - 11	Report: 3359	Drawn: GC	CKD: MC	Date: 30/11/15
Project:	Client: Scottish Power Renewables Spoutcross Farm, North Lanarkshire, Buildings Appraisal				



Fig. 12 Unit 6, bedroom, south-facing window

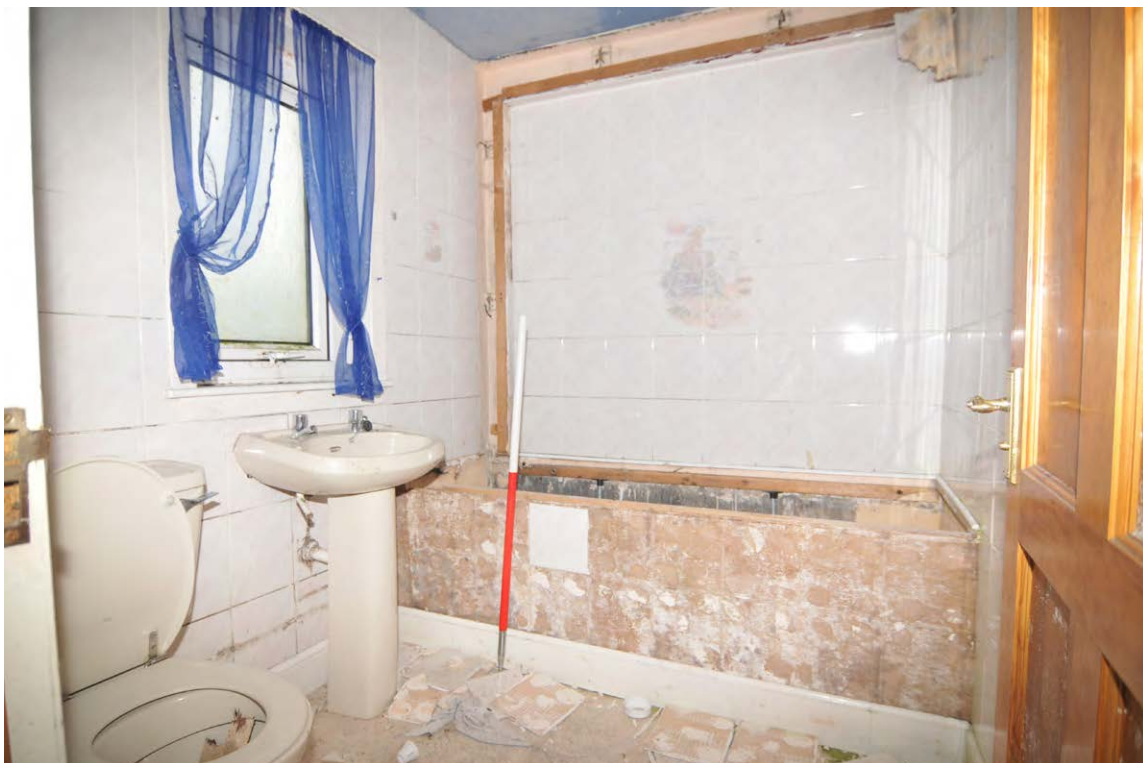


Fig. 13 Unit 7, bathroom, east-facing elevation



CFA ARCHAEOLOGY LTD
 Old Engine House
 Eskmills Park
 Musselburgh
 East Lothian, EH21 7PQ
 T: 0131 273 4380
 F: 0131 273 4381
 info@cfa-archaeology.co.uk
 www.cfa-archaeology.co.uk

Title:	Fig. 12 - 13	Report: 3359	Drawn: GC	CKD: MC	Date: 30/11/15
	Client: Scottish Power Renewables				
Project: Spoutcross Farm, North Lanarkshire, Buildings Appraisal					



Fig. 14 Unit 8 and 9 Outhouse and byre, north-facing elevation



Fig. 15 Unit 9, byre stalls on the north-facing elevation



CFA ARCHAEOLOGY LTD
Old Engine House
Eskmills Park
Musselburgh
East Lothian, EH21 7PQ
T: 0131 273 4380
F: 0131 273 4381
info@cfa-archaeology.co.uk
www.cfa-archaeology.co.uk

Title:	Fig. 14 - 15	Report: 3359	Drawn: GC	CKD: MC	Date: 30/11/15
Client: Scottish Power Renewables					
Project: Spoutcross Farm, North Lanarkshire, Buildings Appraisal					



Fig. 16 Unit 11, timber-framed barn, north-facing elevation



Fig. 17 Unit 12, steel-framed animal shed, west-facing elevation



CFA ARCHAEOLOGY LTD
 Old Engine House
 Eskmills Park
 Musselburgh
 East Lothian, EH21 7PQ
 T: 0131 273 4380
 F: 0131 273 4381
 info@cfa-archaeology.co.uk
 www.cfa-archaeology.co.uk

Title:	Fig. 16 - 17	Report: 3359	Drawn: GC	CKD: MC	Date: 30/11/15
Project:	Client: Scottish Power Renewables Spoutcross Farm, North Lanarkshire, Buildings Appraisal				



Fig. 18 Unit 12, steel-framed shed, north-facing gable



Fig. 19 Unit 12, interior of the steel-framed shed facing, south-east corner



CFA ARCHAEOLOGY LTD
 Old Engine House
 Eskmills Park
 Musselburgh
 East Lothian, EH21 7PQ
 T: 0131 273 4380
 F: 0131 273 4381
 info@cfa-archaeology.co.uk
 www.cfa-archaeology.co.uk

Title:	Fig. 18 - 19	Report: 3359	Drawn: GC	CKD: MC	Date: 30/11/15
	Client: Scottish Power Renewables				
Project: Spoutcross Farm, North Lanarkshire, Buildings Appraisal					



Fig. 20 Unit16, interior of the steel-framed shed, east end



Fig. 21 Unit 17, derelict concrete shed, east-facing elevation



CFA ARCHAEOLOGY LTD
Old Engine House
Eskmills Park
Musselburgh
East Lothian, EH21 7PQ
T: 0131 273 4380
F: 0131 273 4381
info@cfa-archaeology.co.uk
www.cfa-archaeology.co.uk

Title:	Fig. 20 - 21	Report: 3359	Drawn: GC	CKD: MC	Date: 30/11/15
	Client: Scottish Power Renewables				
Project: Spoutcross Farm, North Lanarkshire, Buildings Appraisal					



Fig. 22 Unit 18, roofless stone-built structure, east-facing elevation



CFA ARCHAEOLOGY LTD
 Old Engine House
 Eskmills Park
 Musselburgh
 East Lothian, EH21 7PQ
 T: 0131 273 4380
 F: 0131 273 4381
 info@cfa-archaeology.co.uk
 www.cfa-archaeology.co.uk

Title:	Fig. 22	Report: 3359	Drawn: GC	CKD: MC	Date: 30/11/15
Client: Scottish Power Renewables					
Project: Spoutcross Farm, North Lanarkshire, Buildings Appraisal					



SPOU__001.jpg



SPOU__002.jpg



SPOU__003.jpg



SPOU__004.jpg



SPOU__005.jpg



SPOU__006.jpg



SPOU__007.jpg



SPOU__008.jpg



SPOU__009.jpg



SPOU__010.jpg



SPOU__011.jpg



SPOU__012.jpg



SPOU__013.jpg



SPOU__014.jpg



SPOU__015.jpg



SPOU__016.jpg



SPOU__017.jpg



SPOU__018.jpg



SPOU__019.jpg



SPOU__020.jpg



SPOU__021.jpg



SPOU__022.jpg



SPOU__023.jpg



SPOU__024.jpg



SPOU__025.jpg



SPOU__026.jpg



SPOU__027.jpg



SPOU__028.jpg



SPOU__029.jpg



SPOU__030.jpg



SPOU__031.jpg



SPOU__032.jpg



SPOU__033.jpg



SPOU__034.jpg



SPOU__035.jpg



SPOU__036.jpg



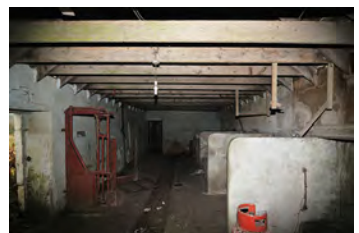
SPOU__037.jpg



SPOU__038.jpg



SPOU__039.jpg



SPOU__040.jpg



SPOU__041.jpg



SPOU__042.jpg



SPOU__043.jpg



SPOU__044.jpg



SPOU__045.jpg



SPOU__046.jpg



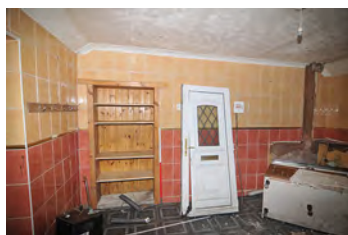
SPOU__047.jpg



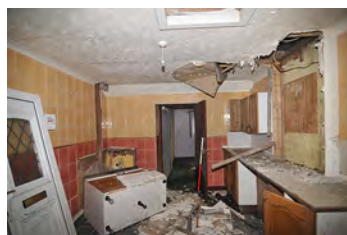
SPOU__048.jpg



SPOU__049.jpg



SPOU__050.jpg



SPOU__051.jpg



SPOU__052.jpg



SPOU__053.jpg



SPOU__054.jpg



SPOU__055.jpg



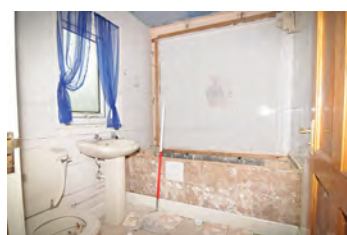
SPOU__056.jpg



SPOU__057.jpg



SPOU__058.jpg



SPOU__059.jpg



SPOU__060.jpg



SPOU__061.jpg



SPOU__062.jpg



SPOU__063.jpg



SPOU__064.jpg



SPOU__065.jpg



SPOU__066.jpg



SPOU__067.jpg



SPOU__068.jpg