

CFA Archaeology Ltd

archaeological consultants

Advice on Archaeology & Planning

Environmental Impact Assessment

Interpretation, Design & Display

Finds/ Environmental Analysis

Field Evaluation & Excavation


Historic Building Recording

Site & Landscape Survey

Geophysical Survey

Imperial Dock Grain Warehouse Port of Leith: Historic Building Survey

Report No. 3444

 0131 273 4380

 0131 273 4381

 info@cfa-archaeology.co.uk

 www.cfa-archaeology.co.uk

CFA ARCHAEOLOGY LTD

The Old Engine House
Eskmills Business Park
Musselburgh
East Lothian
EH21 7PQ

Tel: 0131 273 4380
Fax: 0131 273 4381
email: info@cfa-archaeology.co.uk
web: www.cfa-archaeology.co.uk

Author	Michael Cressey HND BA MSc PhD FSA Scot MCifA
Illustrator	Graeme Carruthers MA MCifA
Editor	Tim Neighbour BSc FSA Scot MCifA
Commissioned by	Forth Ports Ltd
Date issued	June 2016
Version	1
OASIS Reference	cfaarcha1-1-255303
Planning Application No	15/03779/LBC
Grid Ref	NT 12313 74254

This document has been prepared in accordance with CFA Archaeology Ltd standard operating procedures.

Imperial Dock Grain Warehouse Port of Leith: Historic Building Survey

Report No. 3444

CONTENTS

1.	Introduction	4
2.	Methodology	5
3.	Desk-based Assessment Results	6
4.	Building Survey Results	8
5.	Discussion	15
6.	Conclusion	20
7.	References	21

Appendices

1	Photographic record	22
2	Forth Ports Archive – Historical Photographs	24
3.	Forth Ports Archive - Historical Drawings for the Imperial Grain Warehouse	27
3	Discovery & Excavation in Scotland Entry	64

List of Tables

1.	Buildings A-F recorded during the survey (shown on Fig 1).	8
2.	Features recorded on the South-facing elevation	9
3.	Architectural features recorded on the East-facing elevation	10
4.	Features recorded on the North-facing elevation	11
5.	Features recorded on the West-facing elevation	12
6.	Summary list of key phase development and handling capacity	15

List of Figures (Bound at Rear)

Fig 1	Site plan showing the buildings, ancillary building and photo locations
Fig 2	South-facing elevation
Fig 3	East-facing elevation
Fig 4	North-facing elevation
Fig 5	West-facing elevation
Fig 6	Grain conveyor incline to the weighing house on the west elevation
Fig 7	Grain conveyor crossover from incline to horizontal
Fig 8	Grain conveyor alongside the Imperial Dock quayside
Fig 9	West-terminus of the grain conveyor with an earlier surviving section dating to 1937
Fig 10	Imperial Dock East Sub Station - South-west-facing elevation
Fig 11	Imperial Dock East Sub Station - South-east-facing elevation
Fig 12	Imperial Dock East Sub Station - North-west-facing elevation
Fig 13	Building D, Grain dryer control room
Fig 14	East-facing elevation of the Dust Extractor Silos
Fig 15	South-facing elevation of the Dust Extractor Silos
Fig 16	Former Grain Warehouse Administration Building
Fig 17	Deep piling the foundations for the grain warehouse in 1933
Fig 18	South and east-facing elevations under construction
Fig 19	The 1934 warehouse after completion
Fig 20	Piling operations, vertical view taken from the roof of the existing silos

- Fig 21 General view of a deck under construction with concrete supplied on a conveyor belt
- Fig 22 View of the Phase 2 warehouse completed in 1958
- Fig 23 Fitting out the Distribution floor
- Fig 24 General view of Phase 3 collecting floor under construction
- Fig 25 Construction of the loading bays completed on the east-facing elevation
- Fig 26 Phase 3 block nearing completion
- Fig 27 Mobile grain elevator alongside Imperial Dock
- Fig 28 Technical grain distribution drawing
- Fig 29 Simplified grain distribution drawing (after LDN)
- Fig 30 Ground floor conveyor
- Fig 31 Grain delivery floor
- Fig 32 Garner floor
- Fig 33 Distribution floor

Thumbnail images (Bound at rear).

CD Contents: Forth Ports Historical Archive

Appendix 3 Historical Photographs (Phases 1 to 3)

Appendix 4 Historical drawings (Phase 1 to 3)

1. INTRODUCTION

1.1 General

This report presents the results of a Level 3 standing building survey carried out by CFA Archaeology Ltd in May 2016 at the Imperial Dock Grain Warehouse, Port of Leith. The monumental grain warehouse is scheduled to be demolished as the building is now redundant and has outlived its use as a grain storage and distribution facility. A Written Scheme of Investigation (WSI) was produced and accepted following discussions with John Lawson, City of Edinburgh Council Archaeology Service (CECAS). The work was commissioned by Forth Ports Ltd.

1.2 Previous work

Forth Ports Limited holds a detailed digital illustrative and photographic archive of each construction phase:

- Phase 1 (1934) Architect plans, elevations and cross-sections;
- Phase 1 (1934) Construction photographs;
- Phase 2 (1957-59) Architect plans, elevations and cross-sections;
- Phase 2 (1957-59) Construction photographs;
- Phase 3 (1968) Architect plans, elevations and cross-sections;
- Phase 3 (1968) Construction photographs.

LDN Architects Ltd has produced a *Significance and Development Study* (Hopton 2015) on behalf of Forth Ports Ltd, which describes the historical development and significance of the building. The account of the historic development presented in that report is supported by historical archive information including measured architects plans, elevations and cross-sections and the report includes a photographic gazetteer of plant and machinery is included, together with a discourse on the operational aspects of the equipment.

1.3 Objectives

The objectives of this programme of work were to:

- (i) Produce a Level 3 (Historic England 2016) historic building survey report prior to demolition, based on the existing archive and the *Significance and Development Study* (LDN 2015), augmented as necessary with additional recording work;
- (ii) Carry out a targeted architectural watching brief during the demolition process;
- (iii) Integrate the results of the watching brief into the Level 3 historic building survey report.

This draft of the report presents the results of the first of these objectives. A subsequent draft will include the results of the watching brief.

2. METHODOLOGY

2.1 General

CFA follows the Chartered Institute *for* Archaeologists' Code of Conduct and Standards and Guidelines for Historic Building Survey as appropriate. Architectural detail recording followed the recommendations outlined by Historic England (2016, Section 5).

2.2 Desk-based Survey

The National Record of the Historic Environment (NHRE) was consulted to establish what information they held in relation to the functional aspects of the warehouse.

LDN Architects' were also consulted to obtain digital photographs of the interior of the warehouse.

The digital archive, including technical drawings and digital images taken between 1934 and 1968, was forwarded to CFA for inclusion in this report. The photographs and drawings were catalogued and form Appendices 2 and 3.

2.3 Building recording

A Level 3 standing building survey, as defined by Historic England (2016), was carried out.

A photographic survey was carried out using a Nikon D300. A digital photographic record is included in Appendix 1. A ground floor plan was produced to show the orientation of the warehouse and ancillary buildings.

Standard CFA building recording sheets were completed for each elevation. Notes were taken on the key features on each elevation along with, where relevant, the brick type and bond and surviving fixtures and fittings.

Existing 1960s drawings of each external elevation were enlarged to scale and used as a template to record individual features in numerical order.

2.4 Recording Constraints

On the grounds of health and safety recording work was confined to the exterior of the building only.

3. DESK-BASED ASSESSMENT RESULTS

3.1 General

The desk-based results provide a summary of the readily available historical and bibliographic sources that have been examined to provide a succinct account on the historic development of the grain warehouse.

3.2 Historic Environment Scotland (HES) Statutory List

The HER Statutory List includes the following entry:

LEITH DOCKS, IMPERIAL DOCK GRAIN ELEVATOR (Ref:27619)

This building is a category B building and was listed on 29/03/1995.
Group Items: N/A, Group Cat: N/A, Map Ref: NT 2760 7690.

Description

Leith Dock Commission, 1933-4 (A H Roberts, engineer), extended N 1957-8 (Kinnear & Gordon , M C White, chief engineer), extended again 1960s. Monumental 15-bay flat-roofed concrete grain elevator and warehouse with front block rising 5-storeys over storage base, small power generating plan to NE, asbestos-clad grain conveyors on steel stilts connecting Imperial Dock.

ELEVATOR BLOCK: 15-bay with bays divided by shallow pilaster strips, tall storage base blank with openings and shutters under lean-to roof to SE. 5-storey elevator block 2-bays deep above with single windows to each bay (to all elevations), alternating taller storeys, brick infill to aprons, replacement windows.

STORAGE BLOCKS: 10-bay tall storage block part of 1st phase, detailed as above with windows at top floor, extra storey to 3 southernmost bays. Subsequent extensions of 6- and 11-bay, detailed as above, separated by narrow gaps and connected at top floor. Rear extension with open ground floor for loading to last 4-bays. Replacement window to original block, original small pane metal hopper windows to 2nd and 3rd phase.

INTERIOR: elevator block with frame of Y-shaped concrete columns and beams. 333 bins encased in concrete to storage blocks; elevator block with original machinery of conveyors, shutters and elevators; full-height cast-iron staircase to SW corner.

3.3 National Record of the Historic Environment (NRHE)

The NRHE record (NT27NE 57.23) has three scanned images of monochrome photographs of the south, east and west elevations taken by John Hume in 1971 and three other photographs taken by Schomberg Scott in 1950.

3.4 Buildings at Risk Register (BAR)

The BAR has registered the grain elevator as Reference No. 5288 and cites the HES entry in the Statutory List as its main description and provides a short review on earlier planning applications.

3.5 Bibliographic Sources

In 2015 LDN Architects Ltd produced a report entitled *Significance and Development Study of the Imperial Dock Grain Warehouse* (Hopton 2015) on behalf of Forth Ports Ltd. This report presents an illustrated account of the history and significance of the warehouse. Appended to the report is a large collection of digital images of the internal plant and machinery.

The information contained in Hopton (2015) is not repeated here and both reports should be consulted to gain a full understanding of the exterior and interior and the historic development of the Imperial Dock Grain Warehouse.

3.6 Historical Photographs and Technical Drawings

Forth Ports Ltd have a large archive of historical photographs and technical drawings. These include scanned images of original plates taken during the construction of each main development phase (Phases 1 to 3) which provide excellent detail of ground preparation works, deep piling, steel re-enforcement and shuttering work during silo construction in 1934, 1957 and 1968.

The technical drawings cover all aspects of the warehouse design and include a wealth of information on the plant and equipment that was installed throughout the working life of the building.

Catalogues of the photographs (Appendix 2) and technical drawings (Appendix 3) have been made to accompany the deposition of this material in an archive to be agreed with CECAS.

4. BUILDING SURVEY RESULTS

4.1 General

The ground plan (Fig 1) shows the position of the principal buildings. The warehouse (Building A) was served by a number of ancillary buildings (Buildings B to F), as summarised in Table 1. Numbers in bold and in parentheses in the following text relate to cross-referenced feature numbers in Tables 2-5 and on the elevation drawings (Figs 2-5).

Table 1: Buildings A-F recorded during the survey (shown on Fig 1).

Building/structure	Name	Date of erection
A	Imperial Grain Warehouse	1934s-1960s
B	Grain Conveyor	c.1950s & 1980s
C	Imperial Dock Sub Station	1934
D	Grain Dryer control room	1934
E	Dust extractor silos	1990s
F	Former grain warehouse offices	1934

The warehouse itself was constructed and extended over three distinct phases, which are referred to as appropriate in the following text:

- The Phase 1 warehouse was completed in 1934 and was built using re-enforced concrete that included a grain distribution floor and grain supply belts to 70 individual grain silos. A delivery section, with seven individual floors, was accessed by a staircase and passenger lift. The Phase 1 building has 12 bays broken by pilasters.
- The Phase 2 construction (1957-59) added a 7 bay extension.
- The Phase 3 construction (1968) added a further 12 bay extension. The Phase 2 and 3 buildings are separated by narrow gaps visible on the east and west-facing elevations.

All the operational machinery within the warehouse has remained untouched since the warehouse closed in 2006.

4.2 Building A: Imperial Grain Warehouse

The Imperial Dock Grain Warehouse, which was constructed entirely of reinforced concrete, is a rectangular shaped building, approximately 124m long and 39m wide.

South-facing Elevation (Figs 2)

The south-facing elevation was constructed of shuttered concrete with 15 bays divided by pilasters (**S1**). The fenestration has been completely altered from original steel-framed windows to modern PVC framed windows (**S2, S4, S5, S7-9, S11, S17, S19, S20 S22 and S24**). Preceding the insertion of the PVC windows, brickwork (**S3, S6 and S23**) was inserted to block the larger window openings that were evident on the original 1930s elevation drawings. Between the late 1930s and 1950s the south-facing elevation was the main loading

elevation for trains and lorries. The covered canopy roof (S10), which extends the full width of the elevation, was a more recent covering probably replacing asbestos corrugated sheeting. The roof trusses comprised a series of bolted steel mono Z-frames supported on concrete corbels (S15). Below the roof were two rows of PVC windows (S9 and S11) between which was a row of steel shuttered openings (S13). Below the canopy was a series of metal box-shaped grain chutes suspended by metal bars from the roof trusses. Situated within the ninth bay from the west was a blue-painted door (S12) which provided access to the sub-basement distribution floor.

Set back on the west side of the elevation was a six-storey Weigh House block that supported the grain conveyor (Building B). The fenestrations within the Weigh House were all PVC replacements. The top floor window openings had been reduced in size with brick blocking work (S23). The roof of the six-storey block contained a dust extractor associated with cleaning grain as it was delivered into the warehouse. A large ventilation pipe protruded from the right-hand top floor window (S25).

Table 2: Features recorded on the South-facing elevation

Feature No	Function	Description
S1	Main Build	15 bays of shuttered concrete with 5 floors above silo block.
S2	PVC Windows	15 PVC windows replacing 1930s steel framed windows.
S3	Brick blocking	Row of blocking work infilling below replacement PVC windows.
S4	PVC windows	Replacement PVC windows.
S5	PVC Windows	15 PVC windows replacing 1930s steel frames.
S6	Brick blocking	Row of blocking work infilling below replacement PVC windows.
S7	PVC windows	15 Replacement PVC windows.
S8	PVC windows	Top floor windows, all PVC replacements.
S9	PVC windows	15 PVC replacement windows below the loading bay canopy roof.
S10	Roof	Steel-framed canopy of the loading bay roof supported by composite steel trusses carried by corbels.
S11	PVC windows	15 replacement windows below the loading bay canopy roof.
S12	Main door	Main blue-painted door into the distribution floor.
S13	Steel shutters	Steel shuttered windows below the loading bay canopy roof.
S14	Box chutes	Fabricated steel box chutes (n=12) protruding from the below the canopy roof.
S15	Corbels	Concrete corbels supporting each steel canopy roof truss.
S16	PVC windows	Weigh House - two very narrow rectangular replacement windows.
S17	PVC windows	Weigh House -two PVC window replacements.
S18	Loading Bay	Pent-roofed loading bay clad with steel sheeting.
S19	PVC windows	Weigh House - two replacement windows.
S20	PVC window	Weigh House - single PVC window.
S21	Steel shutter	Weigh House - roller steel shutter.
S22	PVC window	Weigh House - pair of PVC window replacement – one is vented.
S23	Brick blocking	Weigh House - brick blocking work below the top floor windows.
S24	PVC windows	Weigh House - rectangular and square top floor windows.
S25	Pipe	Weigh House- dust extraction pipe venting through blocking work.

East-facing Elevation (Figs 3)

The east-facing elevation is described from Phase 1 (at the south end) to Phase 3 (at the north end).

Phase 1 (1930s block): The main build is shuttered concrete (E1) with 12-bays divided by pilasters. At ground floor level was a steel-framed grain off-loading bay (E2) where grain could be tipped directly into the sub-basement distribution floor. As with the south-facing elevation all the windows were PVC replacements (E5, E6, E8, E9, E11, E12 and E17) with associated reduction blocking work (E4, E7 and E10). Outshot off the main elevation was the former 1930s sack store (Building D) that was later converted to the grain dryer control room. This was a five-bay single storey building with a flat roof (E14). Its fenestration a steel roller shutter door (E15) and a main door and window (E16) along with three rectangular PVC replacement windows (E17). Situated next to the gable of the grain dryer control room (E14) was a large dust extractor and pelletiser plant (Building E) combining a series of silos and pellet making machinery housed in a metal sheet clad structure. There was a loading bay below the largest storage tank that was supported on steel stanchions.

Phase 2 (1950s extension): The 1950s extension is separated from the 1930s block by a gap (E18) which measured 1.5m wide and accessible by a ladder (E19). The topmost floor is linked by a bridging floor spanning the gap. The main build (E20) is the same as the 1930s warehouse and has seven bays separated by concrete pilasters. The top floor fenestration is uniformly 8-paned metal framed rectangular windows (E21).

Phase 3 (1960s extension): The 1950s extension is separated from the 1930s block by a gap (E22) which measured 1.5m wide. The topmost floor is linked by a bridging floor spanning the gap. The main build (E23) is the same as Phase 1 and 2 blocks but it had 12 bays separated by palisters. The fenestration was uniform with a top floor set of rectangular metal framed 8-paned windows (E24). The four bays at the north end were set back off the line of the main elevation. The ground floor of this block comprised four loading bays (E25) each 3.6m wide and divided by concrete pillars. Lighting the floor above the loading bays where a set of rectangular 8-paned windows (E26).

Table 3: Features recorded on the East-facing elevation

Feature No	Function	Description
E1	Main Build	12 bay shuttered concrete with pilasters, elevator block (Phase 1 1930s section).
E2	Loading bay	Steel sheet clad lorry loading bay.
E3	Blocked window	Part blocked rectangular window with steel box vent.
E4	Blocking work	Brick blocking work below E5.
E5	PVC windows	Inserted PVC window replacements.
E6	PVC windows	A row of 12 inserted PVC windows.
E7	Blocking work	Brick blocking work above two PVC window inserts.
E8	PVC windows	A pair of replacement PVC windows below E7.
E9	PC windows	A pair of replacement PVC windows.
E10	Blocking work	Brick blocking work below E11.
E11	PVC windows	PVC window replacements above E10.
E12	PVC windows	PVC window replacements on the top floor.
E13	Rear build	Part of the main tower set back with five rectangular

Feature No	Function	Description
		windows (not visible from ground level).
E14	Main Build	Grain Dryer control room, single storey with five bays.
E15	Roller shutter door	Roller shutter door, brown painted (modern) to grain dryer control room.
E16	Door and window	Main entrance door to grain dryer control room.
E17	PVC windows	Three replacement square PVC windows.
E18	Gap	1.5m gap in construction between 1930s and 1950s grain silos.
E19	Access ladder	Steel ladder to access the gap between the silos (E18).
E20	Main build	Seven bay 1950s extension block.
E21	Windows	Seven original rectangular 8-paned metal windows (1950s Phase 2)
E22	Gap	1.5m wide gap between the Phase 2 & 3 construction.
E23	Main Build	Shuttered concrete with pilasters. 12 bays, with 4 loading bays set back from the line of the E-facing elevation.
E24	Windows	Original rectangular 8-paned windows 1960s Phase 3.
E 25	Loading bays	Four loading bays separated by concrete pillars. Each bay was 3.6m wide.
E26	Windows	Four rectangular 8-paned windows lighting the floor above the loading bays.

North-facing elevation (Fig 4)

The north-facing elevation is the same construction (**N1**) as the east-facing elevation and had ten bays, six of which were advanced by the four bays on the east side. The topmost windows (**N2**) were all uniformly rectangular 8-paned metal windows. A lower set of 6 windows (**N3**) were the same type as those above.

Table 4 Features recorded on the North-facing elevation

Feature No	Function	Description
N1	Main Build	9 bay shuttered concrete silo block and loading bays with pilasters. Two rows of windows. First four bays are set back from the line of the N-facing 6 bay loading bay block.
N2	Windows	10 top floor 8-paned windows.
N3	Windows	6 rectangular windows above the loading bays.

West-facing elevation (Fig 5)

The west-facing elevation is described from Phase 1 (at the south end) to Phase 3 (at the north end).

Phase 1 (1930s block): The main build of the 1930s block was shuttered concrete with 12 bays divided by pilasters. The south end of the block was dominated by the tower block. Outshot from the line of the main elevation was five storey block linked to the grain elevator. Its fenestration comprised a series of paired rectangular PVC windows (**W2-W6**). Above the roof of a steel clad loading bay (**W7**) was a rectangular inserted PVC window (**W8**) above a panel of brick blocking work (**W9**). To its right was the gable of the aforementioned loading bay roof (**W10**). The rest of the windows were all PVC replacements (**W11, W14-18, W21-W23**). Brick blocking work to accommodate the windows was also evident (**W13, W19 and W20**). On the top floor of the tower, a steel gantry supported on brackets and safety rail (**W24**) was present and probably allowed maintenance of a pulley block that surmounted the gantry. At ground level built within the outshot return angle of the weigh house was a single storey concrete

electrical switch-gear building with four bays in which contained replacement PVC windows (**W25**). A modern (c.1990s?) steel-framed 16-stage fire-escape had been built (not numbered).

Phase 2 (1950s extension): The 1950s extension is separated from the 1930s block by a gap (**W27**) which measured 1.5m wide. A top bridging floor spanned the gap. The main build (**W26**) is the same as the 1930s block but had only seven bays separated by concrete pilasters. The top floor fenestration is uniformly 8-paned metal framed rectangular windows (**W28**).

Phase 3 (1960s extension): The 1960s extension is separated from the 1950s block by a gap (**W29**) which measured 1.5m wide. Again a top bridging floor spanned the gap. The main build (**W30**) was the same as the Phase 1 and 2 blocks but it had 12 bays separated by palisters. The fenestration was uniform with a set of rectangular metal framed 8-paned windows (**W31**) lighting the top floor. An outshot stair or lift block was lit by five rectangular windows (**W32**). At the north end of the elevation were four lorry loading bays (**W33**) divided by concrete pillars. The loading bays were surmounted by a set of three 8-paned windows (**W34**) and a smaller narrower toilet window (**W35**).

Table 5 Features recorded on the West-facing elevation

Feature No	Function	Description
W1	Main Build	Shuttered concrete construction with pilasters. 12 bays rising to five floors above grain distribution floor at south end. Outshot block supporting the terminus of the grain elevator.
W2-W6	Weigh House with PVC windows	Weigh House – paired PVC windows on outshot weigh house block supporting the grain elevator. -
W7	Loading Bay	Metal clad loading bay with a pent-shaped roof.
W8	Blocking work	Brick blocking below a window above the loading bay.
W9	PVC window	PVC window inserted above brick blocking work (W7).
W10	Canopy roof	Loading bay canopy roof lad with metal sheeting.
W11	PVC windows	PVC windows running full length of the Phase 1 1930s block.
W12	Door	Steel roller door.
W13	Blocking work	Brick blocking work above window W14.
W14	PVC window	Inserted window below brick blocking work.
W15	PVC windows	Three PVC wind inserts on the north side of W14.
W16	PVC windows	Two PVC windows flanking blocking work W13.
W17	PVC windows	Three PVC window inserts at Level 3 above the grain silos.
W18	PVC windows	A pair of PVC inserted windows on the north side of the tower
W19	Blocking work	Brick blocking below W21
W20	Blocking work	Brick blocking below W22
W21	PVC window	Inserted PVC window above brick blocking W19
W22	PVC window	Inserted PVC window above brick blocking W22
W23	PVC windows	Inserted PVC windows on the top floor of the tower
W24	Gantry & Hand Rail	Gantry supported on steel brackets surrounded by a tubular steel hand rail. Small hatch or window to the rear.
W25	Electrical switchgear block	Four bay switch gear block lit by three PVC windows. A door is present at the south end. Plain featureless concrete walls.
W26	Main build	Shuttered concrete 7-bay extension with pilasters. Phase

Feature No	Function	Description
		2 1950s.
W27	Gap	A 1.5m wide gap between Phase 1 and 2 construction phases.
W28	Windows	Eight-paned windows on the top floor (n=7) running the full length of the Phase 2 1950s block.
W29	Gap	A 1.5m wide gap between Phase 2 and 3 extensions.
W30	Main Build	Shuttered concrete 12-bay extension with pilasters. Phase 3 1960s.
W31	Windows	Eight-paned windows on the top floor (n=12) running the full length of the Phase 3 1960s block.
W32	Stair tower	Outshot stair tower with five small rectangular windows
W33	Loading bays	Four loading bays separated by concrete pillars. Each bay was 3.6m wide.
W34	Windows	Three 8-paned windows lighting the floor above the loading bays.
W35	Window	Small rectangular 6-paned window within the angle of the outshot stair tower (W31) and the W-facing elevation of the loading bays.

4.3 Building B: Grain Conveyor (Figs 6-9)

The grain conveyor is a steel-framed structure supported on eight steel stanchions stamped *Frodingham Iron and Steel Co. England*. The conveyor was 276m long with the longest horizontal section measuring 9.3m above ground level and rising to 15.3m at its highest point where it entered into the west-facing elevation of the warehouse. The grain conveyor is clad with steel sheeting and has a barrel-shaped roof. Originally the conveyor was much narrower and was clad with corrugated asbestos, a section of which still survives at its western terminus (Fig 9). Grain was supplied to the conveyor by mobile dock-side elevators that sucked the grain directly out of the holds of vessels berthed alongside the elevator.

4.4 Building C: Imperial Dock Sub Station (Figs 10-12)

The single storey Imperial Dock Sub Station was constructed in 1937 to supply power to the grain warehouse. The building occupies a rectangular footprint measuring 16.1m x 13m and was constructed of brick with cement render. The hipped roof was covered with slate and had a rectangular louver vent.

South-west-facing elevation

The south-west-facing elevation had four bays with a central steel roller door measuring 2.5m high and 2m wide. Above the door were two 6-paned windows divided by buttresses. On each side of the windows was a tall 15-paned window set within deep openings. On the west side of the elevation was a plank-built door.

North-west facing elevation

The north-west-facing elevation had five bays each separated by a buttress. Inset within each bay was a tall 15-paned window. Below each window was a pair of ventilation grills.

North-east facing elevation

The north-east-facing elevation mirrored the south-west-facing elevation but had a central plank-built sliding door with a smaller door built into it.

South-east-facing elevation

The south-east-facing elevation mirrored the north-west-facing elevation with the only difference being that one of the ventilation grills at the north end had been blocked-up.

4.5 Building D: Grain dryer control room (Fig 13)

Built in 1937 originally as a sack store, the building was later converted to a grain dryer control room. The building measured 12m long and 3.5m wide and was attached to the east-facing elevation of the grain warehouse. The building was constructed of shuttered concrete with a flat roof. The north and south gables had modern PVC windows below a wide concrete cornice. The east-facing elevation had five bays with three PVC windows, a roller steel door and a plain wooden door and side window.

4.6 Building E: Dust extractor silos (Figs 14-15)

The dust extractor comprised a box stanchion supporting two steel silos linked to an extractor housed in an attached rectangular building. A series of large pipes connected the silos to the extractors housed adjacent. Above the silos was an array of extractor fans and maintenance gantries.

4.7 Former Grain Warehouse offices (Fig 16)

The former Warehouse offices were situated approximately 30m from the south-east corner of the warehouse and measured 12m long and 7.5m wide. The building has lain derelict since c.1990.

North and South-facing gables

The north and south-facing gables had no fenestration. The walls were constructed of concrete mono-block to a height of 1.75m above which the walls had been covered with pebble-dash render. A tall chimney stack was present on the north gable. The roof was hipped and covered with slate.

East-facing elevation

The east-facing elevation had three bays with two boarded mullioned windows at each end and a single boarded window off-centre. The same pebble-dash render was present as the aforementioned gables.

West-facing elevation

The west-facing elevation had four bays, with a boarded door situated towards the south gable. The doorway was flanked by two mullioned windows on its north side and a single part-boarded mullioned window on its south side.

5. DISCUSSION

5.1 General

The following discussion includes a synthesis on the historical development of the grain warehouse based largely on Hopton (2015) followed by a discourse on the operational aspects of grain delivery to and from the warehouse. Table 6 summarises the key events in its phase development and changes to its grain handling capacity.

Table 6. Summary list of key phase development and handling capacity (Extracted from a drawing dated 1969 by W.J. Leaman, Leith Docks Chief Engineer)

Year	Event (Phase)	Summary Details
1934	Phase 1 - Original Warehouse	Capacity 20,000 tons/hour (TPH). 2-150 TPH Quayside uptake plants & 2-180 TPH Gantry Conveyors.
1958	Phase 2 - 1 st Extension to Warehouse	Capacity 15,000 tons. Distribution & collecting conveyors extended, additional dust plant installed.
1968	Phase 3 - 2 nd Extension to Warehouse	Capacity 20,000 tons: Distribution & collecting conveyors extended, 2 nd dust plant extended. New 200 tons/hour uptake plant. New 200 TPH Gantry Conveyor. New bulk delivery chutes and weighers at north end of the warehouse.
1968	Addition	Transshipment conveyor built
1969	Extension	Extension to 200 TPH Gantry Conveyor, new dust system installed.
1969	Replacements/Upgrades	Two new 225 TPH quayside intake plants. Existing 180TPH Gantry conveyors upgraded to 225 TPH. Existing 180 TPH elevators upgraded to 225 TPH

5.2 Historical development

The import of grain has traditionally been a main source of business for Leith Docks but with changing market conditions, trade has fallen into decline since it was the Dock's principal import in the early 20th century (Hopton 2015).

Writing in *The Dock & Harbour Journal* of October 1924, the Superintendent and Engineer to the Leith Docks Commissioners, Alfred Roberts OBE MInstC, recorded that the import of grain was a '*conspicuous feature of the trade of the port*'. He also noted that a private warehousing company, Patmore & Co, had built the first grain storage warehouse at Leith on the South Quay of the Edinburgh Dock in 1903 and that it was subsequently taken over by the Leith Dock Commission in 1906. The warehouse was built on the '*American silo principle*' and its storage bins were '*constructed of timber on what is known as the "Interlaced" System, the whole being surrounded by a brick wall to protect the timber from the weather*'.

Grain was transferred directly to the warehouse using a bucket elevator that could unload 360 tons of grain per hour. In 1913-14 two pneumatic ship-discharging appliances were added to reduce the need for manpower to complete

the cleaning out of holds and the warehouse was extended to create a total holding capacity of 20,000 tons.

The grain trade continued to increase after the First World War and grain became increasingly transported in bulk rather than in bags. Increased mechanisation of handling processes reduced costs and the need for man-power. In 1928 a new mechanised Grain Warehouse was built adjacent to the 1903 warehouse to provide an additional 16,000 tons of storage capacity and the ability to load railway wagons directly as well as road vans and carts. This building was constructed entirely of reinforced concrete and its design, although slightly smaller in size, was the model for the later Imperial Dock Grain Warehouse. A detailed description of the building and its operation is provided in an article in the September 1928 edition of The Dock & Harbour Authority Journal. The article records that Alfred Roberts had overall responsibility for the project and that J Dalglish Easton MInstCE had responsibility for the design of the buildings, machinery and equipment and construction of the works.

The original 1903 warehouse was destroyed by fire on 12 January 1930 and the Dock Commissioners decided to replace the old warehouse with a new grain warehouse constructed entirely of reinforced concrete, but on a new site at the east end of the Imperial Dock, the largest dock at the port, so that vessels of larger size and deeper draught could be discharged. The change of site involved the construction of a complete new ship-discharging plant, as well as the alteration of quays, railways, and roads.

The new Imperial Dock facilities were completed in 1934 (Figs 17-19) and a detailed description of their design, construction, and operation of the plant, processes and machinery was provided by T A S Fortune (1885-1963), the Resident Engineer for the whole works, in a series of three papers for the Institute of Structural Engineers. Fortune, who had a major role in the design and construction of the Imperial Dock Grain Store, recorded that Alfred Roberts again had overall responsibility for the project and that J Dalglish Easton MInstCE again had responsibility for the design of the buildings, machinery and equipment and construction of the works. The building cost approximately £100,000 and the total project including machinery, equipment, pneumatic ship discharging plant, electrical transformer house, switchgear, cables, quay cranes and the alterations to railways and roads, cost approximately £250,000; a substantial investment for the Port Authorities. Fortune, who had joined the Dock Commission as an Assistant Engineer in 1909 and went on to become General Manager, Secretary and Chief Engineer for Leith Docks, described the building thus:

‘Upon the foundations described the new warehouse was erected. It is a rectangular building about 159ft long by 142ft wide, providing storage for 20,000 tons of grain. The walls, floor, columns, beams, roofs, silos, and stairs are of reinforced concrete and are arranged to form (1) a storage section consisting of a series of grain silos, (2) a delivery section consisting of a series of grain silos and the delivery, distributing, weighing, and machinery floors, (3) weigh

house with floors, etc., to carry two large grain-weighing machines, (4) switch house, and (5) sack store.

‘The storage section consisted of seventy silos about 12ft 6in by 14ft to hold 1,000 quarters of wheat and sixty silos 14ft by 6ft 3in to hold 500 quarters; all are approximately 77ft high with reinforced concrete hopper bottoms and pumice concrete fillets.

‘The delivery section consisted of thirty delivery silos with an elevator tower approximately 150ft high above quay level, and was provided with seven reinforced concrete floors to carry machines, appliances, and equipment. These silos were fitted with steel hopper bottoms, while part of one silo was occupied by a spiral sack chute. A passenger lift and stairway were provided from the ground floor to the top of the elevator tower, and there was a cast iron spiral stair from the delivery floor to the top floor of the tower. The reinforced concrete roofs of the building were enclosed by parapet walls and covered with asphalt’ (TAS Fortune 1934).

In his only concessions to a discussion of aesthetics Fortune recorded that:

‘The beams at the various floor levels are flush with the columns on the outside and they, together with the window openings, break the front elevation into panels of varying heights and give character to the elevations.’ and that “After the outside walls of the building had been constructed to their full height the entire concrete surface of the building was given two coats of neat cement put on with a brush, and great care was taken that the whole of the surface was uniform in colour. Cement from one consignment was used for this purpose so as to avoid any changes in shade.’

Between 1957 and 1959, the Imperial Dock Grain Warehouse was extended by seven bays (Figs 20-23) to provide an additional 15,000 tons of storage capacity by Kinnear & Gordon Consulting Civil Engineers working with M C White, Chief Engineer of the Leith Dock Commission at the time. The design of the extension replicates the design of the original storage section but is only connected to it physically at ground level and at the distribution floor above the silos. The construction work is documented in an evocative collection of photographs held by Forth Ports (Appendix 2).

A third extension (Figs 24-26) to the Imperial Dock Grain Warehouse was added in 1968, providing an additional 20,000 tons of storage capacity and additional weighing machines, delivery silos and railway wagon and lorry loading bays. Again, the construction work, which was phased, was recorded photographically (Appendix 2).

During the 1980s some £1.25m was spent on improving plant and machinery including a new dust extraction and delivery system and in 2004 a programme of concrete repairs was carried out to address rusting reinforcing bars and spalling concrete.

The Edinburgh Dock Warehouse was demolished in 1991 but the Imperial Dock Grain Warehouse continued in operation until the end of 2006, when the prohibitively expensive cost of upgrading it to meet new health and safety legislation together with uneconomic running costs forced its closure.

5.3 Grain distribution and storage (Figs 27-33)

The grain warehouse was served by two mobile pneumatic ship-discharging plants (now demolished), sited on the quay of the Imperial Dock (Fig 27). Each plant could discharge 180 tonnes of grain per hour from a vessel lying alongside, and automatically deliver the grain to one of two conveyor belts placed in the high-level gantry.

A distribution and delivery block to the south, the so called elevator tower, consisted of grain delivery silos together with six working floors which held the machinery necessary to distribute, weigh and deliver the grain around the building to where it was required (Figs 28-29). A series of long sub-ground floor conveyor belts carried the grain the full length of the building (Fig 30). There was a further delivery section to the north of the building in part of the 1960's extension that consisted of grain delivery silos together with a "Scale Floor" for weighing the grain prior to loading it into lorries at ground level below. The building's height to roof level was 27m over the storage silos and 46m over the south delivery block.

The storage section held 147 silos, each 3.6m x 3.6m, and a further 60 silos, each 3.6m x 1.7m. All the silos were approximately 24m high and had hoppers bases (Fig 31) of reinforced concrete. The elevator tower held 25 delivery silos and a grain elevator, which lifted grain from the dockside gantry vertically to the top of the building, together with machinery that distributed and weighed the grain and a dust extraction system. The delivery section to the north consists of a further 24 delivery silos, each 3.6m x 3.6m, leading to the Scale Floor below.

By means of vacuum pumps the grain was raised in bulk from a ship's hold through pipes into a canister, and then conveyed on belts to the automatic weighting house before being transported to the grain store, where it was distributed to the storage silos via the tower or to nearer silos by penthouse chutes (Fig 32) and in the case of the remoter silos on conveyor belts via grain carriers (Fig 33). In order to bypass certain storage silos a series of grain conveyors were used to transport grain horizontally to different penthouse chutes.

When grain was required to be delivered out of the grain warehouse it was drawn off from the bottom of the storage silos to the conveyor belts at the ground level (Fig 30) and delivered to one of the bucket elevators, which took it to the top of the elevator tower. It was then passed through weighing machines and discharged either from delivery bins via hoppers or direct through chutes to lorries positioned on the ground.

Further delivery of grain out of the grain warehouse took place to the north of the building where grain was drawn out of a series of delivery bins to pneumatic grain scales on the scale floor below, which weighed the grain before directing it through outlets and funnels to the lorries below. Any surplus grain was redirected from the delivery silos to the ground floor conveyors by use of return chutes, where the transportation process via elevators and conveyors would begin again, to recycle the surplus grain back into the storage silos.

Prior to storage the grain was transported via a grain conveyor to be cleaned by a grain cleaner before moving to the grain drier for drying.

The above processes were supported by a central dust suppression system to extract the dust generated by the conveyor. Dust was sucked out by large dust extraction units mounted on the roof and transported via overhead pipes into a dust collection silo sited to the east of the grain store (Building E).

For communication between the elevator tower and main distribution floor a series of Loudaphones and communication booths were sited around the building. Once stored the silos were monitored for capacity and temperature at a central control point located at the centre of the main distribution floor.

Power and lighting in the building were controlled from an electrical switch house on the ground floor at the western side of the grain store. In order to supply additional electrical energy, due to the later extension of the grain store, a further electrical transformer house adjacent to the store was added (Building C).

6. CONCLUSION

The Level 3 standing building survey has recorded the major architectural features and ancillary structures associated with the Imperial Grain Warehouse prior to their demolition. Internal plant, fixtures and fittings recorded by LDN (Hopton 2015) provide technical information on how the building operated as a grain distribution centre and importantly how the building became an integral part of the economic development of the Port of Leith during the second half of the 20th century. The Forth Ports digital archive (Appendices 2 & 3) provides a unique collection of historical photographs and technical drawings associated with the construction and developmental history of the warehouse.

The survey has demonstrated that all four external elevations of the Imperial Grain Warehouse have remained largely unaltered since they were constructed. The largest modification occurred to the fenestration of the Phase 1 (1934) block when all the metal-framed windows were replaced by PVC windows in 1975. Presumably this not only allowed more light into the building but also ensured that the interior working floors were suitably pressurised for more efficient dust extraction.

An entry in *Discovery and Excavation in Scotland 2016* (Appendix 4) and the completion of the online OASIS form will be sufficient to disseminate the preliminary results of this work. In line with CECAS requirements, a suitable publication outlet will be identified to disseminate the results to a wider audience.

A copy of the final report will be lodged with CECAS and the NRHE, once the results of the watching brief have been included.

7. REFERENCES

Historic England 2016 *Understanding Historic Buildings: A guide to good recording Practice*. London.

Hopton, M 2015 *Imperial Dock Grain Warehouse Significance and Development Study* Unpublished report for Forth Ports Ltd by LDN Architects' Ltd.

TAS Fortune - 1934 Selection of papers describing the design and construction of the Grain Warehouse.

The Dock and Harbour Authority Journal, October 1924.

The Dock & Harbour Authority Journal, September 1928.

APPENDIX 1: PHOTOGRAPHIC REGISTER

Shot No.	Description	Facing
	<i>Imperial Grain Warehouse (Building A)</i>	
1-2	S-facing elevation, General view	N
3	S-facing elevation, canopy roof trusses	W
4-5	S-facing elevation, canopy roof trusses	E
6	S-facing elevation, corbels supporting the canopy trusses	N
7-8	S-facing elevation, covered loading bay	N
9	S-facing elevation – two set back bays on the W-facing elevation	N
10	S-facing elevation- top of the grain conveyor and sub station	N
11	Camera reference shot for E-facing elevation	N/a
12-13	East-facing elevation-general view	W
	<i>Dust extractor silos (Building F)</i>	
14	E-facing elevation, general view	W
15	E-facing elevation, detailed shot	W
16	S-facing elevation, showing stanchions and silos	N
	<i>Imperial Grain Warehouse (Building A)</i>	
17	E-facing elevation, interior of the grain loading bay	W
18	SE-facing corner of the former sack room (Building D)	NW
19	E-facing elevation of the former sack room	W
20	E-facing elevation- fuel storage tank	W
21	E-facing elevation inspection ladder to the gap between the 1930s and 1950s silos	W
22	E-facing elevation – fuel storage pump	SW
23	E-facing elevation – fuel storage pump	E
24	E-facing elevation, N end lorry loading bays	W
25	E-facing elevation, N end lorry loading bays, detail shot	W
26	W-facing elevation, N end lorry loading bays, detail shot	E
27	Camera reference shot for W-facing elevation	N/a
28	W-facing elevation, S end with grain conveyor	E
29	W-facing elevation – general view	E
30	S & W facing elevations, panoramic view	SE
31	W-facing elevation- interior of the loading bay at the S end	E
32	Grain conveyor – tallest stanchion close to the W-facing elevation	S
33	Grain conveyor – tallest stanchion close to the W-facing elevation	E
34	W-facing elevation – switch gear room	E
35	Rear of the S-block bays against the W-facing elevation	Oblique
36	E-facing elevation of the Imperial Dock East Sub Station (Building C)	W
37	E-facing elevation of the Imperial Dock East Sub Station (Building C) name plate	N
38	SE corner of the Imperial Dock East Sub Station	NW
39	S-facing elevation of the Imperial Dock East Sub Station	N
40	N-facing elevation of the Imperial Dock East Sub Station	S
41	S-facing elevation of the lift tower at the N end of the W-facing elevation	N
42	N-facing corner of the Imperial Dock East Substation	S
43-44	W-facing elevation, lorry loading bays	E
45	W-facing interior of the lorry loading bay, telescopic chute	E
46	Vertical shot of the telescopic grain loading chute	n/a
47	Oblique shot of the telescopic grain loading chute	n/a
48	Oblique view of external grain chutes rising up to the loading bays	n/a
49	NW corner of the Imperial Grain Warehouse	SE
50	Panoramic view of the Imperial Grain House seen from the main dock gates	NW
51	Outshot lift tower on the W-facing elevation	S
52-53	N-facing elevations, general view	S

Shot No.	Description	Facing
54	NE corner of the showing the 1960s block and loading bays	SW
55	Grain conveyor – distance shot	S
56	Grain conveyor – distance shot	W
57-59	Gap between the 1950s and 1960s silos	W
60	Anti-theft warning plaque in the lorry loading bay	N
61	SE corner of the former office block (Building E)	NW
62	E-facing (rear) of the office block (Building E)	W
63	S-facing gable of the office block (Building E)	N
64	W-facing (front) elevation of the office block (Building E)	NE
65	Grain elevator – general view	N
66	Grain elevator stanchion	NE
67	Grain elevator stanchion	NNE
68	Below the grain elevator, general view	E
69	Grain elevator horizontal and rising junction house	N
70	Grain elevator horizontal and rising junction house	E
71-72	Stanchion supporting the grain elevator	W
73	General shot of the grain elevator	E
74	Grain elevator terminus c.1950s construction	N
75	Grain elevator terminus c.1950s construction	E
76-77	Ship unloading grain elevator	E
78-79	Ship unloading grain elevator	W

APPENDIX 2: FORTH PORTS ARCHIVE - HISTORICAL PHOTOGRAPHS

Plate Ref No	Subject	Date
PHASE 1	Construction Photographs	1932-33
1	Railway sidings, pre site construction	9/12/31
2	Steel form work, foundations	11/11/31
3	Crack in brickwork with leveling rod scale	Undated
4	Piling rigs in operation during foundation work	8/12/31
5	Horizontal crack in a pile	19/1/32
6	Horizontal crack in a pile	Undated
7	Horizontal crack in a pile	19/1/32
8	Horizontal crack in a pile	19/1/32
9	Timber shoring surrounding piles trench	19/1/32
10	Silo construction, steel fixers at work	30/11/32
11	Steel and form work for support columns	30/11/32
12	Silo construction, steel and form work	29/12/32
13	Ground floor sack store and scaffolding above	30/1/33
14	Silos under construction	30/1/33
15	Cement delivery crane and shutter work	04/10/33
16	Timber support work and four workers pouring cement	4/09/33
17	Steel and shuttering work for the silos	10/03/33
18	Steel reinforcing bars for a floor	Undated
19	Silos under construction with concrete delivery crane	01/05/33
20	Silos under construction, workers in the foreground	05/06/33
21	Decking and steel work	02/11/33
22	Silo floor delivery holes and columns under construction	03/07/33
23	South and east-facing elevations of tower with LNER locomotive in the foreground	04/07/33
24	Part of the roof nearing completion	01/08/33
25	West facing elevation and grain elevator nearing completion	Undated
26	Grain warehouse completed with canopy and loading chutes	Undated
PHASE 2	Construction Photographs	1956-57
1	Railway Diversion to North of Imperial Grain Warehouse	01/12/56
2	Railway Diversion to North of Grain Warehouse Extension of first piling frame	25/01/57
3	Nearing completion of Railway Diversion to North of Imperial Grain Warehouse. Two piling frames in operation	15/03/57
4	Piling operations. View taken from roof of existing silos	15/03/57
5	Attempt at extracting steel piling tube at position No. 140 by means of two 100-ton hydraulic jacks.	19/04/57
6	Further attempt at extracting steel piling tube at position No. 140 by means of hydraulic jack.	29/04/57
7	Further attempt at extracting steel piling tube at position No.140 by means of jacks and steam extractor.	29/04/57
8	Foundations and Collecting floor under construction. Note transport of concrete from mixer by monorail.	18/06/57
9	Foundations and Collecting Floor under construction. Note transport from mixer by monorail.	18/06/57
10	View from roof of existing warehouse prior to commencement of Phase I sliding operation. Note Phase II entablature slab and Collecting floor columns	05/09/57

Plate Ref No	Subject	Date
	completed, and West hoist tower.	
11	Concreting Phase I entablature slab. Erection of sliding formwork and bin wall columns commenced.	24/08/57
12	View of Collecting Floor columns.	24/08/57
13	Erection of Phase I sliding formwork completed. Note yoke and jack assemblies, hydraulic pipelines and stopends.	05/09/57
14	Commencement of Phase I sliding operation. Note hanging scaffolds for rubbing up	11/09/57
15	Phase I West wall. Note, particularly on pilasters, honeycombed concrete, failure of corners and interior finish.	11/09/57
18	Phase III sliding operation in progress. Note Phases I and II completed to distributing floor level.	13/11/57
19	Phase III sliding operation by night.	13/11/57
20	Distributing Floor walls completed. Construction of parapet in progress.	06/03/58
21	View of structure complete except for cathead opening.	03/08/58
22	View of Distributing Floor – Conveyors and Dust Plant.	Undated
23	View of Collecting Floor – Conveyors and Hopper Bottoms.	Undated
PHASE 3	Construction Photographs	1967-68
0	Deep piling foundations, Phase III.	Undated
1 (Ref. No. B.2825/5)	General View of Foundations I.	05/02/67
2 (Ref. No. B.2825/6)	General View of Foundations II.	05/02/67
3 (Ref. No. B.2825/7)	Bored Piling Work at Special Combined Pile Capping B.	05/02/67
4.a	Backfill at Loading Bin Block	12/02/67
4.b	General View of the 1967 Phase Roof.	Undated
4 (Ref. No. B.2825/9)	General View of Collecting Floor I.	06/02/67
5.a	Floodlights on S.A.I. Conveyor Gantry.	12/02/67
5.b	Broken out Cracked Column Haunch.	10/02/67
5 (Ref. No. B.2825/10)	General View of Collecting Floor II.	06/02/67
6 (Ref. No. B.2858/15)	General View of Collecting Floor and Entablature Slab I.	07/03/67
7 (Ref. No. B.2858/15)	General View of Collecting Floor and Entablature Slab II.	07/03/67
8 (Ref. No. B.2868/7)	Entablature Slab Reinforcement in Main Bin Block.	01/04/67
9 (Ref. No. B.2868/8)	Prefabrication of Shutter Units for Slide I – Main Bin Block.	01/04/67
10 (Ref. No. B.2868/9)	Shutter Units and Decking Being Placed for Slide I – Main Bin Block.	01/4/67
11 (Ref. No. B.2872/16)	General View of Site showing Preparations for Slide I.	06/04/67
12 (Ref. No. B.2872/17)	General View of Site prior to Commencement of Slide I.	06/04/67
13 (Ref. No. B.2897/10)	General View of Site after Slide I.	05/05/67
14 (Ref. No. B.2897/11)	General View of Site Showing Preparation for Slide II.	05/05/67
15	East-facing Elevation of the Phase III Block.	Undated
16	North-west Corner of the Loading Bays. Under Construction.	Undated
17	North-east Corner of the Loading Bays. Under Construction.	Undated
18	North-west Corner of the Loading Bays. Under	Undated

Plate Ref No	Subject	Date
	Construction.	
19	North-west Corner of the Loading Bays. Nearing Completion.	Undated
20	North-east Corner of the Loading Bays. Nearing Completion.	Undated
21	West-facing Elevation. North Loading Bays Under Construction.	Undated
22	North-east Corner of the 1967 Block. Under Construction.	Undated
23	North-east Corner of the 1967 Block. Under Construction.	Undated
24	Top Delivery Floor. Under Construction.	Undated
25	West-facing Elevation. Fenestration Under Construction.	Undated
26	East-facing Elevation. Fenestration Under Construction.	Undated
27	Roof Under Construction.	Undated
28	Roof Under Construction.	Undated
29	Roof After Completion.	Undated

APPENDIX 3: FORTH PORTS ARCHIVE – HISTORICAL DRAWINGS FOR THE IMPERIAL GRAIN WAREHOUSE

Drg No	Plan No	Title of Drawing	Prep By	Date	Size	Filename
7353	6868A	Grain Warehouse Extension; Dust Collecting Systems; Operating Diagram (Plan No 6868/a)	Leith Dock Commission	11/13/1958	A2	FP002682.TIF
3978	3801	Piled Foundation & New Grain Warehouse	Melville, Dundas & Whitson	10/1/1931	A4	FP004052.TIF
3985	3808	Hydraulic Station; Arrangement Of 'a' Type Centrifugal	Pulsometer Engineering Co Ltd	10/19/1932	A3	FP004059.TIF
3985	3808	Hydraulic Station; Arrangement Of 'a' Type Centrifugal	Pulsometer Engineering Co Ltd	10/19/1932	A2	FP004060.TIF
3985	3808	Hydraulic Station; Arrangement Of 'a' Type Centrifugal	Pulsometer Engineering Co Ltd	10/19/1932	A3	FP004061.TIF
3986	3809	Hydraulic Station; Arrangement Of 'hsl' Type Centrifugal Pump	Pulsometer Engineering Co Ltd	10/20/1932	A3	FP004062.TIF
3988	3811	Installation Diagram For Manual Control Chlorinator Solution Feed Type Msp & Mspm	Pulsometer Engineering Co Ltd	10/28/1932	A4	FP004065.TIF
3990	3813	Sectional Arrangement Of Rotary Water Ring Exhauster	Pulsometer Engineering Co Ltd	7/27/1932	A3	FP004067.TIF
2948	3897	Piled Foundation, New Grain Warehouse; Traverse Walls	Leith Dock Commission	9/18/1931	A4	FP004116.TIF
2948	3897	Piled Foundation, New Grain Warehouse; Traverse Walls	Leith Dock Commission	9/18/1931	A4	FP004117.TIF
2948	3897	Piled Foundation, New Grain Warehouse; Traverse Walls	Leith Dock Commission	9/18/1931	A4	FP004118.TIF
2948	3897	Piled Foundation, New Grain Warehouse; Traverse Walls	Leith Dock Commission	9/18/1931	A4	FP004120.TIF
2922	3851	Piled Foundation, New Grain Warehouse; Traverse Walls	Leith Dock Commission	9/18/1931	A4	FP004121.TIF
2921	3850	Piled Foundation, New Grain Warehouse; Traverse Walls	Leith Dock Commission	9/18/1931	A4	FP004122.TIF
2934	3873	Piled Foundation, New Grain Warehouse; Traverse Walls	Leith Dock Commission	10/12/1931	A4	FP004123.TIF

Drg No	Plan No	Title of Drawing	Prep By	Date	Size	Filename
2941	3090	Piled Foundation, New Grain Warehouse; Traverse Walls	Leith Dock Commission	7/1/1932	A4	FP004124.TIF
2941	3090	Piled Foundation, New Grain Warehouse; Traverse Walls	Leith Dock Commission	7/1/1932	A4	FP004125.TIF
2928	3882	Piled Foundation, New Grain Warehouse; Traverse Walls	Leith Dock Commission	9/9/1931	A4	FP004126.TIF
2929	3883	Piled Foundation, New Grain Warehouse; Traverse Walls	Leith Dock Commission	9/10/1931	A4	FP004127.TIF
2944	3893	Piled Foundation, New Grain Warehouse; Traverse Walls	Leith Dock Commission	9/16/1931	A4	FP004133.TIF
2945	3894	Piled Foundation, New Grain Warehouse; Traverse Walls	Leith Dock Commission	9/16/1931	A4	FP004134.TIF
2947	3896	Piled Foundation, New Grain Warehouse; Traverse Walls	Leith Dock Commission	9/17/1931	A4	FP004135.TIF
2920	3849	Piled Foundation, New Grain Warehouse; Traverse Walls	Leith Dock Commission	9/17/1931	A4	FP004136.TIF
2929	3883	Piled Foundation, New Grain Warehouse; Traverse Walls	Leith Dock Commission	10/8/1931	A4	FP004137.TIF
2943	3892	Piled Foundation, New Grain Warehouse; Traverse Walls	Leith Dock Commission	9/16/1931	A4	FP004138.TIF
2946	3896	Piled Foundation, New Grain Warehouse; Traverse Walls	Leith Dock Commission	9/17/1931	A4	FP004139.TIF
2925A	3879	Piled Foundation, New Grain Warehouse; Traverse Walls	Leith Dock Commission	9/4/1931	A4	FP004140.TIF
3107	3849	Grain Warehouse; Plan Of Foundations Of Weigh House	Leith Dock Commission	2/29/1932	A0	FP004141.TIF
2920	3849	Grain Warehouse; Piled Foundation Plan	Leith Dock Commission	7/7/1931	A0	FP004142.TIF
2921	3850	Grain Warehouse; Piled Foundation	Leith Dock Commission	7/7/1931	A0	FP004143.TIF
2922	3851	Grain Warehouse; Piled Foundation	Leith Dock Commission	7/7/1931	A0	FP004144.TIF

Drg No	Plan No	Title of Drawing	Prep By	Date	Size	Filename
2923	3852	Grain Warehouse; Reinforced Concrete Pile	Leith Dock Commission	7/7/1931	A0	FP004145.TIF
3094	3854	Grain Warehouse; Piled Foundations; Revised Details Of Elevator Pits	Leith Dock Commission	2/2/1932	A0	FP004147.TIF
4027	3856	Grain Warehouse; Cast Iron V.C. Standard Pile Shoe	Melville, Dundas & Whitson	9/17/1931	A1	FP004149.TIF
4028	3857	Cast Iron Jetting Pile Shoe	Melville, Dundas & Whitson	9/17/1931	A1	FP004150.TIF
4029	3858	Special Cast Iron Vibro Pile Shoe	Melville, Dundas & Whitson	9/17/1931	A0	FP004151.TIF
4030	3859	Cast Iron V.C.Pile Shoe For Hard Driving	Melville, Dundas & Whitson	9/17/1931	A0	FP004152.TIF
4032	3862	Grain Warehouse; Position Of South Wall Piles In Relation To Old Sea Wall; Albert Dock	Leith Dock Commission	8/17/1931	A1	FP004155.TIF
2936	3874	Grain Warehouse; Longitudinal Section B-b	Leith Dock Commission	8/24/1931	A0	FP004167.TIF
2938	3876	Grain Warehouse; Transverse Section	Leith Dock Commission	8/24/1931	A1	FP004168.TIF
2924	3877	Grain Warehouse; Site Plan	Leith Dock Commission	6/14/1932	A0	FP004169.TIF
2920	3849	Grain Warehouse; Piled Foundation Plan	Leith Dock Commission	7/7/1931	A0	FP004170.TIF
2925	3878	New Grain Warehouse Imperial Dock, Sectional Plan Of Building	Leith Dock Commission	7/7/1931	A1	FP004171.TIF
2925A	3879	New Grain Warehouse Imperial Dock, Sectional Plan Of Building	Leith Dock Commission	8/15/1931	A0	FP004172.TIF
2926	3880	Grain Warehouse; West Elevation	Leith Dock Commission	8/15/1931	A0	FP004173.TIF
2927	3881	Grain Warehouse; East Elevation	Leith Dock Commission	8/15/1931	A0	FP004174.TIF
2928	3882	Grain Warehouse; South Elevation	Leith Dock Commission	8/15/1931	A0	FP004175.TIF

Drg No	Plan No	Title of Drawing	Prep By	Date	Size	Filename
2929	3883	Grain Warehouse; North Elevation	Leith Dock Commission	8/15/1931	A0	FP004176.TIF
2933	3887	Grain Warehouse; Transverse Section	Leith Dock Commission	8/15/1931	A0	FP004180.TIF
2940	3889	Grain Warehouse; Ground Floor Under Delivery Section	Leith Dock Commission	7/1/1932	A0	FP004182.TIF
2941	3890	Grain Warehouse; Bolt Holes In Ground Floor Under Delivery Section	Leith Dock Commission	7/1/1932	A0	FP004183.TIF
2942	3891	Grain Warehouse; Bolt Holes For Tunnel Bands	Leith Dock Commission	7/1/1932	A0	FP004184.TIF
2659	3753	Hydraulic Station; Holes And Seatings On Upper Floor	Leith Dock Commission	9/28/1932	A0	FP004395.TIF
2667	3757	Hydraulic Station; Cross-Section Showing Main Pump No 3	Leith Dock Commission	7/21/1932	A0	FP004399.TIF
3046	3763	Hydraulic Station; Emergency Water Supply Pipe	Leith Dock Commission	7/18/1931	A0	FP004406.TIF
3087	3765	Hydraulic Station; Detail Of Wood Block For Accumulator	Leith Dock Commission	10/2/1931	A2	FP004408.TIF
3064	3767	Hydraulic Station; Foundations For Hydraulic Accumulator West End	Leith Dock Commission	8/15/1931	A0	FP004410.TIF
3968	3791	Engineers Office	Pulsometer Engineering Co Ltd	8/4/1931	A2	FP004417.TIF
2992	3941	New Grain Warehouse Imperial Dock, Details Of North Wall Of Tower	Leith Harbour & Docks	7/1/1932	A0	FP004475.TIF
2993	3942	Grain Warehouse; Elevation Of South Wall Of Tower	Leith Dock Commission	7/1/1932	A0	FP004476.TIF
2995	3944	New Grain Warehouse Imperial Dock, West & East Walls Of Tower	Leith Harbour & Docks	7/1/1932	A0	FP004477.TIF
2997	3946	New Grain Warehouse Imperial Dock, Penthouse Wall	Leith Harbour & Docks	7/1/1932	A0	FP004478.TIF
2999	3948	Grain Warehouse; Stair Well; Elevations And Plans	Leith Dock Commission	7/1/1932	A0	FP004479.TIF

Drg No	Plan No	Title of Drawing	Prep By	Date	Size	Filename
3004	3953	New Grain Warehouse Imperial Dock, Wall Columns	Leith Harbour & Docks	7/1/1932	A0	FP004480.TIF
3005	3954	New Grain Warehouse Imperial Dock, Wall Columns	Leith Harbour & Docks	7/1/1932	A0	FP004481.TIF
3006	3955	New Grain Warehouse Imperial Dock, Wall Column At Stair Well	Leith Harbour & Docks	7/1/1932	A0	FP004482.TIF
3007	3956	New Grain Warehouse Imperial Dock, Details Of Corner Piers In Stairwell	Leith Harbour & Docks	7/1/1932	A0	FP004483.TIF
3008	3957	New Grain Warehouse Imperial Dock, Columns On Distributing Floor And Centre Columns In Tower	Leith Harbour & Docks	7/1/1932	A0	FP004484.TIF
3212	3987	New Grain Warehouse Imperial Dock, Sectional Plan Of Storage Bin Shewing Reinforcement	Leith Harbour & Docks	9/5/1932	A0	FP004485.TIF
2967	3916	Grain Warehouse; Pumice Concrete Fillets In Storage Bins	Leith Dock Commission	7/1/1932	A0	FP004486.TIF
2969	3918	Grain Warehouse; Support To Redler Conveyors And Roller Guard To Door Opening	Leith Dock Commission	7/1/1932	A0	FP004487.TIF
2971	3920	Grain Warehouse; Openings And Bolt Holes In Intermediate Floors	Leith Dock Commission	7/1/1932	A0	FP004488.TIF
2975	3924	Grain Warehouse; Bolt Holes And Suspension Boxes In Distributing Floor	Leith Dock Commission	7/1/1932	A0	FP004489.TIF
2989	3938	Grain Warehouse; Small Concrete Hoppers At First Floor Of Tower	Leith Dock Commission	3/4/1933	A0	FP004490.TIF
2990	3939	Grain Warehouse; Lavatories	Leith Dock Commission	7/1/1932	A0	FP004491.TIF
2994	3943	Details Of South Wall Of Tower	Leith Dock Commission	7/1/1932	A0	FP004492.TIF
2996	3945	Grain Warehouse; North Curtain Wall; North And East Walls Of Stair Well	Leith Dock Commission	7/1/1932	A0	FP004493.TIF
2998	3947	Grain Warehouse; East And West Curtain Walls	Leith Dock Commission	7/1/1932	A0	FP004494.TIF
3000	3949	Grain Warehouse; Stair Well; Lower Portion	Leith Dock Commission	7/1/1932	A0	FP004495.TIF

Drg No	Plan No	Title of Drawing	Prep By	Date	Size	Filename
3001	3950	Grain Warehouse; Stair Well; Upper Portions	Leith Dock Commission	7/1/1932	A0	FP004496.TIF
3002	3951	Gain Warehouse; Roof Of Motor Room	Leith Dock Commission	7/1/1932	A0	FP004497.TIF
3003	3952	Grain Warehouse; Floor Of Motor Room	Leith Dock Commission	7/1/1932	A0	FP004498.TIF
3009	3958	Grain Warehouse; General Arrangement Of Switch House	Leith Dock Commission	7/1/1932	A0	FP004499.TIF
3009	3958	Grain Warehouse; General Arrangement Of Switch House	Leith Dock Commission	7/1/1932	A0	FP004500.TIF
3010	3959	Grain Warehouse; Switch House; Plans; Elevations And Sections	Leith Dock Commission	7/1/1932	A0	FP004501.TIF
3011	3960	Grain Warehouse; Switch House; Beams; Floor And Canopy	Leith Dock Commission	7/1/1932	A0	FP004502.TIF
3012	3961	Grain Warehouse; Sack Store; Elevations And Sections	Leith Dock Commission	7/1/1932	A0	FP004503.TIF
3013	3962	Grain Warehouse; Sack Store; Details Of Beams And Pile Caps	Leith Dock Commission	7/1/1932	A0	FP004504.TIF
3014	3963	Grain Warehouse; Window Openings	Leith Dock Commission	7/1/1932	A0	FP004505.TIF
3015	3964	Grain Warehouse; Window And Column Guards	Leith Dock Commission	7/1/1932	A0	FP004506.TIF
3016	3965	Grain Warehouse; Detail Of Verandah	Leith Dock Commission	7/1/1932	A0	FP004507.TIF
3017	3966	Grain Warehouse; Bridge Over Conveyor Band	Leith Dock Commission	7/1/1932	A0	FP004508.TIF
3018	3967	Grain Warehouse; Cat Head And Platform On West Wall Of Tower	Leith Dock Commission	7/1/1932	A0	FP004509.TIF
3019	3968	Grain Warehouse; Skylights On Roof Over Storage Section	Leith Dock Commission	7/1/1932	A0	FP004510.TIF
3020	3969	Grain Warehouse; Chequered Plates On Opening For Handling Machinery	Leith Dock Commission	7/1/1932	A0	FP004511.TIF

Drg No	Plan No	Title of Drawing	Prep By	Date	Size	Filename
3021	3970	Grain Warehouse; Fire Escape Stair On West Wall	Leith Dock Commission	7/1/1932	A0	FP004512.TIF
3022	3971	Grain Warehouse; Fire Escape On West Wall	Leith Dock Commission	7/1/1932	A0	FP004513.TIF
3023	3972	Grain Warehouse; Fire Escape Platforms On North Wall Of Tower	Leith Dock Commission	7/1/1932	A0	FP004514.TIF
3024	3973	Grain Warehouse; Fire Escape Ladder And Access Ladder	Leith Dock Commission	7/1/1932	A0	FP004515.TIF
3025	3974	Grain Warehouse; Handrail Around Elevator Pits	Leith Dock Commission	7/1/1932	A0	FP004516.TIF
3026	3975	Grain Warehouse; Guard Rails For Intermediate Floor; Position Of Access Ladders For Intermediate Floor	Leith Dock Commission	7/1/1932	A0	FP004517.TIF
3027	3976	Grain Warehouse; Bin Bottom Ladders In Large Storage Bins	Leith Dock Commission	7/1/1932	A0	FP004518.TIF
3028	3977	Grain Warehouse; Vertical Storage Bin Ladders And Small Bin Bottom Ladders	Leith Dock Commission	7/1/1932	A0	FP004520.TIF
3029	3978	Grain Warehouse; Ladders To Delivery Bins	Leith Dock Commission	10/31/1932	A0	FP004521.TIF
3030	3979	Grain Warehouse; Ladders To Elevators Wells And Small Delivery Bin	Leith Dock Commission	11/30/1932	A0	FP004522.TIF
3031	3980	Grain Warehouse; Details Of Steel Doors	Leith Dock Commission	7/1/1932	A0	FP004523.TIF
3032	3981	Grain Warehouse; Details Of Steel Doors	Leith Dock Commission	7/1/1932	A0	FP004524.TIF
3033	3982	New Grain Warehouse Imperial Dock, Details Of Steel Doors	Leith Harbour & Docks	7/1/1932	A0	FP004525.TIF
3034	3983	Grain Warehouse; Arrangement Of Sack Shoots To Motor Lorries And Railway Wagons	Leith Dock Commission	7/28/1932	A0	FP004526.TIF
3035	3984	Grain Warehouse; Sack Shoots To Lorries And Railway Wagons	Leith Dock Commission	7/27/1932	A0	FP004527.TIF
3036	3985	Grain Warehouse; Enlarged Details Of Tie Rod For Verandah	Leith Dock Commission	7/25/1932	A0	FP004528.TIF

Drg No	Plan No	Title of Drawing	Prep By	Date	Size	Filename
3037	3986	Grain Warehouse; Bolt Holes In Distributing Floor Under Tower	Leith Dock Commission	7/28/1932	A0	FP004529.TIF
3039	3988	Grain Warehouse; Handrailing In Weigh House	Leith Dock Commission	9/26/1932	A0	FP004530.TIF
3150	3989	Grain Warehouse; Weigh House Stairs	Leith Dock Commission	9/29/1932	A0	FP004531.TIF
3151	3900	Grain Warehouse; Weigh House Walls	Leith Dock Commission	9/29/1932	A0	FP004532.TIF
3152	3991	Grain Warehouse; Columns At Corners Of Weigh House	Leith Dock Commission	9/29/1932	A0	FP004533.TIF
3153	3992	Grain Warehouse; Centre Wall Pipes In Walls Of Weigh House	Leith Dock Commission	9/29/1932	A0	FP004534.TIF
3154	3993	Grain Warehouse; Weigh House First Floor And Ground Floor; Beam Over Vestibule And Centre Column	Leith Dock Commission	9/29/1932	A0	FP004535.TIF
3155	3994	Grain Warehouse; Weigh House Second Floor	Leith Dock Commission	9/29/1932	A0	FP004536.TIF
3156	3995	Grain Warehouse; Weigh House Third Floor	Leith Dock Commission	9/29/1932	A0	FP004537.TIF
3157	3996	Grain Warehouse; Weigh House Fourth Floor	Leith Dock Commission	9/29/1932	A0	FP004538.TIF
3158	3997	Grain Warehouse; Weigh House Fifth Floor	Leith Dock Commission	9/29/1932	A0	FP004539.TIF
3159	3998	Grain Warehouse; Weigh House Roof	Leith Dock Commission	9/29/1932	A0	FP004540.TIF
3160	3999	Grain Warehouse; Sections Through Weigh House	Leith Dock Commission	9/29/1932	A0	FP004541.TIF
3161	4000	Grain Warehouse; Weigh House Partition Walls And Parapet And Rainwater Outlet	Leith Dock Commission	9/29/1932	A0	FP004542.TIF
2952	3901	New Grain Warehouse Imperial Dock, Details Of Transverse Wall No.11	Leith Harbour & Docks	7/1/1932	A0	FP004550.TIF
2953	3902	New Grain Warehouse Imperial Dock, Details Of Transverse Wall No.11a	Leith Harbour & Docks	7/1/1932	A0	FP004551.TIF

Drg No	Plan No	Title of Drawing	Prep By	Date	Size	Filename
2954	3903	New Grain Warehouse Imperial Dock, Elevation Of Transverse Wall No.12	Leith Harbour & Docks	7/1/1932	A0	FP004552.TIF
2955	3904	New Grain Warehouse Imperial Dock, Details Of Transverse Wall No.12	Leith Harbour & Docks	7/1/1932	A0	FP004553.TIF
2956	3905	New Grain Warehouse Imperial Dock, Elevation Of Transverse Wall No.13	Leith Harbour & Docks	7/1/1932	A0	FP004554.TIF
2957	3906	New Grain Warehouse Imperial Dock, Details Of Transverse Wall No.13	Leith Harbour & Docks	7/1/1932	A0	FP004555.TIF
2959	3908	New Grain Warehouse Imperial Dock, Elevation Of Longitudinal Walls No's.3, 5, 7 & 9	Leith Harbour & Docks	7/1/1932	A0	FP004556.TIF
2958	3907	New Grain Warehouse Imperial Dock, Longitudinal Wall No. 1	Leith Harbour & Docks	7/1/1932	A0	FP004557.TIF
2960	3909	New Grain Warehouse Imperial Dock, Details Of Longitudinal Walls No's 3, 5, 7 & 9	Leith Harbour & Docks	7/1/1932	A0	FP004558.TIF
2961	3910	New Grain Warehouse Imperial Dock, Elevation Of Longitudinal Wall No's 2, 4, 6, 8, 10 And Tunnel Wall	Leith Harbour & Docks	7/1/1932	A0	FP004559.TIF
2962	3911	New Grain Warehouse Imperial Dock, Details Of Longitudinal Wall No's 2, 4, 6, 8 & 10 And Tunnel Wall	Leith Harbour & Docks	7/1/1932	A0	FP004560.TIF
2963	3912	New Grain Warehouse Imperial Dock, Longitudinal Wall No. 11	Leith Harbour & Docks	7/1/1932	A0	FP004561.TIF
2964	3913	New Grain Warehouse Imperial Dock, Delivery Bin Walls No's 1 & 16	Leith Harbour & Docks	7/1/1932	A0	FP004562.TIF
2965	3914	New Grain Warehouse Imperial Dock, Delivery Bin Walls No's. 2 To 15	Leith Harbour & Docks	7/1/1932	A0	FP004563.TIF
2966	3915	New Grain Warehouse Imperial Dock, Concrete Hoppers To Storage Bins	Leith Harbour & Docks	7/1/1932	A0	FP004564.TIF
2968	3917	New Grain Warehouse Imperial Dock, Delivery Floor	Leith Harbour & Docks	7/1/1932	A0	FP004565.TIF
2970	3919	New Grain Warehouse Imperial Dock, Intermediate Floor	Leith Harbour & Docks	7/1/1932	A0	FP004566.TIF
2972	3921	New Grain Warehouse Imperial Dock, Distibuting Floor (Under Tower)	Leith Harbour & Docks	7/1/1932	A0	FP004567.TIF

Drg No	Plan No	Title of Drawing	Prep By	Date	Size	Filename
2973	3922	New Grain Warehouse Imperial Dock, Distributing Floor (West Half)	Leith Harbour & Docks	7/1/1932	A0	FP004568.TIF
2974	3923	New Grain Warehouse Imperial Dock, Distibuting Floor (East Half)	Leith Harbour & Docks	7/1/1932	A0	FP004569.TIF
2976	3925	New Grain Warehouse Imperial Dock, Portal Beams X & Y With Detail Of Bars	Leith Harbour & Docks	7/1/1932	A0	FP004570.TIF
2977	3926	New Grain Warehouse Imperial Dock, Penthouse Floor	Leith Harbour & Docks	7/1/1932	A0	FP004571.TIF
2978	3927	New Grain Warehouse Imperial Dock, Penthouse Roof	Leith Harbour & Docks	7/1/1932	A0	FP004572.TIF
2979	3928	New Grain Warehouse Imperial Dock, Roof Over Storage Section	Leith Harbour & Docks	7/1/1932	A0	FP004573.TIF
2980	3929	New Grain Warehouse Imperial Dock, Details Of Roof Over Storage Section	Leith Harbour & Docks	7/1/1932	A0	FP004574.TIF
2981	3930	New Grain Warehouse Imperial Dock, Roof Over Elevator Tower	Leith Harbour & Docks	7/1/1932	A0	FP004575.TIF
2982	3931	Grain Warehouse; Fourth Floor Elevator Tower; Concrete Blocks Under Elevator Drives	Leith Dock Commission	7/1/1932	A0	FP004576.TIF
2983	3932	New Grain Warehouse Imperial Dock, 4th Floor In Elevation Tower	Leith Harbour & Docks	7/1/1932	A0	FP004577.TIF
2984	3933	New Grain Warehouse Imperial Dock, 3rd Floor In Elevation Tower	Leith Harbour & Docks	7/1/1932	A0	FP004578.TIF
2985	3934	New Grain Warehouse Imperial Dock, Detail Of Beam Bars And Beams In 3rd Tower Floor	Leith Harbour & Docks	7/1/1932	A0	FP004579.TIF
2986	3935	New Grain Warehouse Imperial Dock, 2nd Floor In Elevation Tower	Leith Harbour & Docks	7/1/1932	A0	FP004580.TIF
2987	3936	New Grain Warehouse Imperial Dock, 1st Floor In Elevation Tower	Leith Harbour & Docks	7/1/1932	A0	FP004581.TIF
2988	3937	New Grain Warehouse Imperial Dock, Struts Above 1st Tower Floor	Leith Harbour & Docks	7/1/1932	A0	FP004582.TIF
2991	3940	New Grain Warehouse Imperial Dock, Elevation Of North Wall Of Tower	Leith Harbour & Docks	7/1/1932	A0	FP004583.TIF

Drg No	Plan No	Title of Drawing	Prep By	Date	Size	Filename
4064	4050	Grain Warehouse; Concrete Hoppers To Storage Bins; Progress Plan	Leith Dock Commission	11/7/1932	A1	FP004584.TIF
4056	4042	Grain Warehouse; Causeway Work	Leith Dock Commission	12/20/1932	A0	FP004592.TIF
4114	4100	Grain Warehouse; Roof Over Storage Section; Progress Plan	Leith Dock Commission	7/1/1932	A1	FP004594.TIF
4112	4098	Grain Warehouse; Stairwell Elevations And Plans; Progress Plan	Leith Dock Commission	7/1/1932	A1	FP004596.TIF
4110	4096	Grain Warehouse; Lavatories; Progress Plan	Leith Dock Commission	7/1/1932	A1	FP004598.TIF
4109	4095	Grain Warehouse; Delivery Floor; Progress Plan	Leith Dock Commission	7/1/1932	A1	FP004599.TIF
4108	4094	Grain Warehouse; Intermediate Floor	Leith Dock Commission	7/1/1932	A1	FP004600.TIF
4107	4093	Grain Warehouse; Delivery Bin Walls No 15;Progress Plan	Leith Dock Commission	7/1/1932	A1	FP004601.TIF
4106	4092	Grain Warehouse; Delivery Bin Walls No 14;Progress Plan	Leith Dock Commission	7/1/1932	A0	FP004602.TIF
4105	4091	Grain Warehouse; Delivery Bin Walls Nos 12 And 13;Progress Plan	Leith Dock Commission	7/1/1932	A1	FP004603.TIF
4104	4090	Grain Warehouse; Delivery Bin Walls; No 11;Progress Plan	Leith Dock Commission	7/1/1932	A1	FP004604.TIF
4103	4089	Grain Warehouse; Delivery Bin Walls Nos 9 And 10;Progress Plan	Leith Dock Commission	7/1/1932	A1	FP004605.TIF
4102	4088	Grain Warehouse; Delivery Bin Walls No 8;Progress Plan	Leith Dock Commission	7/1/1932	A1	FP004606.TIF
4101	4087	Grain Warehouse; Delivery Bin Walls; Nos 6 And 7;Progress Plan	Leith Dock Commission	7/1/1932	A1	FP004607.TIF
4100	4086	Grain Warehouse; Delivery Bin Walls; No 5;Progress Plan	Leith Dock Commission	7/1/1932	A1	FP004608.TIF
4099	4085	Grain Warehouse; Delivery Bin Walls Nos 3 And 4;Progress Plan	Leith Dock Commission	7/1/1932	A1	FP004609.TIF

Drg No	Plan No	Title of Drawing	Prep By	Date	Size	Filename
4098	4084	Grain Warehouse; Delivery Bin Walls No 2;Progress Plan	Leith Dock Commission	7/1/1932	A0	FP004610.TIF
4097	4083	New Grain Warehouse Imperial Dock, Delivery Bin Walls No's 1 & 16	Leith Harbour & Docks	7/1/1932	A1	FP004611.TIF
4096	4082	Grain Warehouse; Longitudinal Wall No 11;Progress Plan	Leith Dock Commission	7/1/1932	A1	FP004612.TIF
4095	4081	Grain Warehouse; Elevations Of Longitudinal Wall No 10 And Tunnel Wall; Progress Plan	Leith Dock Commission	7/1/1932	A0	FP004613.TIF
4094	4080	Grain Warehouse; Longitudinal Wall No 9;Progress Plan	Leith Dock Commission	7/1/1932	A1	FP004614.TIF
4093	4079	Grain Warehouse; Longitudinal Wall No 8 And Tunnel Wall; Progress Plan	Leith Dock Commission	7/1/1932	A0	FP004615.TIF
4092	4078	Grain Warehouse; Longitudinal Silo Walls No 7;Progress Plan	Leith Dock Commission	7/1/1932	A1	FP004616.TIF
4091	4077	Grain Warehouse; Longitudinal Wall No 6;Progress Plan	Leith Dock Commission	7/1/1932	A1	FP004617.TIF
4090	4076	Grain Warehouse; Longitudinal Wall No 5;Progress Plan	Leith Dock Commission	7/1/1932	A0	FP004618.TIF
4089	4075	Grain Warehouse; Longitudinal Wall No 4 And Tunnel; Progress Plan	Leith Dock Commission	7/1/1932	A1	FP004619.TIF
4088	4074	Grain Warehouse; Longitudinal Wall No 3;Progress Plan	Leith Dock Commission	7/1/1932	A0	FP004620.TIF
4087	4073	Grain Warehouse; Longitudinal Wall No 2 And Tunnel; Progress Plan	Leith Dock Commission	7/1/1932	A0	FP004621.TIF
4086	4072	Grain Warehouse; Longitudinal Wall No 1;Progress Plan	Leith Dock Commission	7/1/1932	A1	FP004622.TIF
4085	4071	Grain Warehouse; Transverse Wall No 13;Progress Plan	Leith Dock Commission	7/1/1932	A1	FP004623.TIF
4084	4070	Grain Warehouse; Transverse Wall No 12;Progress Plan	Leith Dock Commission	7/1/1932	A0	FP004624.TIF
4083	4069	Grain Warehouse; Transverse Wall No 11a;Progress Plan	Leith Dock Commission	7/1/1932	A0	FP004625.TIF

Drg No	Plan No	Title of Drawing	Prep By	Date	Size	Filename
4082	4068	Grain Warehouse; Transverse Wall No 11;Progress Plan	Leith Dock Commission	7/1/1932	A1	FP004626.TIF
4081	4067	Grain Warehouse; Transverse Wall No 10;Progress Plan	Leith Dock Commission	7/1/1932	A1	FP004627.TIF
4080	4066	Grain Warehouse; Transverse Wall No 9;Progress Plan	Leith Dock Commission	7/1/1932	A1	FP004628.TIF
4079	4065	Grain Warehouse; Transverse Wall No 8;Progress Plan	Leith Dock Commission	7/1/1932	A1	FP004629.TIF
4078	4064	Grain Warehouse; Transverse Wall No 7;Progress Plan	Leith Dock Commission	7/1/1932	A1	FP004630.TIF
4077	4063	Grain Warehouse; Transverse Wall No 6a;Progress Plan	Leith Dock Commission	7/1/1932	A1	FP004631.TIF
4076	4062	Grain Warehouse; Transverse Wall No 6; Progress Plan	Leith Dock Commission	7/1/1932	A1	FP004632.TIF
4075	4061	Grain Warehouse; Transverse Wall No 5a Progress Plan	Leith Dock Commission	7/1/1932	A1	FP004633.TIF
4074	4060	Grain Warehouse; Transverse Wall No 5; Progress Plan	Leith Dock Commission	7/1/1932	A1	FP004634.TIF
4073	4059	Grain Warehouse; Transverse Wall No 4a;Progress Plan	Leith Dock Commission	7/1/1932	A1	FP004635.TIF
4072	4058	Grain Warehouse; Transverse Wall No 4;Progress Plan	Leith Dock Commission	7/1/1932	A1	FP004636.TIF
4071	4057	Grain Warehouse; Transverse Wall No 3;Progress Plan	Leith Dock Commission	7/1/1932	A1	FP004637.TIF
4070	4056	Grain Warehouse; Transverse Wall No 2;Progress Plan	Leith Dock Commission	7/1/1932	A0	FP004638.TIF
4069	4055	Grain Warehouse; Transverse Wall No 1;Progress Plan	Leith Dock Commission	7/1/1932	A0	FP004639.TIF
4068	4054	Grain Warehouse; Ground Floor Under Delivery Section; Progress Plan	Leith Dock Commission	7/1/1932	A1	FP004640.TIF
4067	4053	Grain Warehouse; Granolithic On Pumice Fillets; Progress Plan	Leith Dock Commission	8/15/1931	A1	FP004641.TIF

Drg No	Plan No	Title of Drawing	Prep By	Date	Size	Filename
4066	4052	Grain Warehouse; Pumice Fillets; Progress Plan	Leith Dock Commission	8/15/1931	A0	FP004642.TIF
4065	4051	Grain Warehouse; Sectional Plan Of Building; Progress Plan	Leith Dock Commission	8/15/1931	A1	FP004643.TIF
7246	6817	Warehouse Imperial Dock	Leith Dock Commission	3/7/1957	A2	FP004644.TIF
7245	6800	Warehouse Imperial Dock	Leith Dock Commission	3/7/1957	A2	FP004645.TIF
7246	6817	Warehouse Imperial Dock	Leith Dock Commission	3/7/1957	A2	FP004646.TIF
7245	6800	Warehouse Imperial Dock	Leith Dock Commission	3/7/1957	A2	FP004647.TIF
Review		General Arrangement Of Standard Coupling	Henry Simon Ltd	9/5/1932	A2	FP004649.TIF
2059	2561	New Grain Warehouse, Imperial Dock	Spencer & Co Ltd	5/27/1932	A3	FP004651.TIF
2974	3923	Distributing Floor Over Storage Section, Details Of Beam 'b'	Leith Docks Commission	7/1/1932	A4	FP004654.TIF
2974	3923	Distributing Floor Over Storage Section, Detail Of Bars Beam 'b'	Leith Docks Commission	7/1/1932	A3	FP004655.TIF
3024	3973	Proposed Spiral Stair	Mackenzie & Moncur Ltd	6/16/1932	A3	FP004656.TIF
3510	4015	Proposed Method Of Supporting Bottom Of Spiral Stair	Mackenzie & Moncur Ltd	6/16/1932	A4	FP004663.TIF
3510	4015	Detail Of First Flight	Mackenzie & Moncur Ltd	6/16/1932	A3	FP004664.TIF
3016	3965	Grain Warehouse, Verandah Truss - Stress Diagram	Leith Dock Commission	7/1/1932	A1	FP004679.TIF
3168	4006	Grain Warehouse; Key Plan Of Manholes To Ladders	Leith Dock Commission	12/19/1932	A1	FP004694.TIF
3191	4022	Grain Warehouse; Holes In Concrete Walls Of Passenger Elevator For Bolts Securing Guides	Leith Dock Commission	8/16/1932	A1	FP004697.TIF

Drg No	Plan No	Title of Drawing	Prep By	Date	Size	Filename
3139	4021	Grain Warehouse; Grain Weigh House Floors	Leith Dock Commission	5/12/1932	A1	FP004698.TIF
3138	4020	Grain Warehouse; Grain Weigh House	Leith Dock Commission	5/9/1932	A1	FP004699.TIF
3472	4011	Grain Warehouse; Reinforcement; Beam Bars In First And Second Tower Floors	Leith Dock Commission	5/11/1933	A0	FP004708.TIF
3342	4010	Grain Warehouse; First Tower Floor	Leith Dock Commission	3/28/1933	A0	FP004709.TIF
3335	4009	Grain Warehouse; Details Of Large Concrete Hoppers (C1 & C2) At 1st Tower Floor	Leith Dock Commission	3/14/1933	A0	FP004710.TIF
3329	4008	Grain Warehouse; Weigh House Apron At Opening For Gantry	Leith Dock Commission	1/28/1933	A0	FP004711.TIF
3167	4007	Grain Warehouse; Weigh House Columns At Opening For Gantry	Leith Dock Commission	1/26/1933	A0	FP004712.TIF
3168	4006	Grain Warehouse; Key Plan Of Manholes To Ladders	Leith Dock Commission	12/19/1932	A0	FP004713.TIF
3166	4005	Grain Warehouse; Weigh House; Bolt Holes In Floors And Roofs	Leith Dock Commission	9/29/1932	A0	FP004714.TIF
3165	4004	Grain Warehouse; Details Of Floor Opening Lifting Joist And Runway Joist With Column Support For Machinery Opening In Weigh House	Leith Dock Commission	2/1/1933	A0	FP004715.TIF
3163	4002	Grain Warehouse; Beam Bars Third And Fourth Floors Of Weigh House	Leith Dock Commission	9/29/1932	A0	FP004717.TIF
3162	4001	Grain Warehouse; Beam Bars First And Second Floors Of Weigh House	Leith Dock Commission	9/29/1932	A0	FP004718.TIF
4134	4120	Grain Warehouse; Sections Through Weigh House	Leith Dock Commission	9/29/1932	A0	FP004744.TIF
4133	4119	Grain Warehouse; Weigh House Walls	Leith Dock Commission	9/29/1932	A1	FP004745.TIF
4132	4118	Grain Warehouse; Sack Store Elevations And Sections	Leith Dock Commission	7/1/1932	A1	FP004746.TIF
4131	4117	Grain Warehouse; Switch House; Plans Elevations & Sections	Leith Dock Commission	7/1/1932	A1	FP004747.TIF

Drg No	Plan No	Title of Drawing	Prep By	Date	Size	Filename
4130	4116	Grain Warehouse; Roof Over Elevator Tower	Leith Dock Commission	7/1/1932	A1	FP004748.TIF
4129	4115	Grain Warehouse; Fourth Floor In Elevator Tower	Leith Dock Commission	7/1/1932	A1	FP004749.TIF
4128	4114	Grain Warehouse; Third Floor In Elevator Tower	Leith Dock Commission	7/1/1932	A0	FP004750.TIF
4127	4113	Grain Warehouse; Second Floor In Elevator Tower	Leith Dock Commission	7/1/1932	A0	FP004751.TIF
4124	4110	Grain Warehouse; First Floor In Elevator Tower	Leith Dock Commission	7/1/1932	A1	FP004754.TIF
4123	4109	Grain Warehouse; Penthouse Roof	Leith Dock Commission	7/1/1932	A1	FP004755.TIF
4122	4108	Grain Warehouse; Penthouse Wall	Leith Dock Commission	7/1/1932	A0	FP004756.TIF
4121	4107	Grain Warehouse; Penthouse Floor	Leith Dock Commission	7/1/1932	A1	FP004757.TIF
4119	4105	Grain Warehouse; Elevation Of South Wall Of Tower	Leith Dock Commission	7/1/1932	A0	FP004759.TIF
4118	4104	Grain Warehouse; Elevation Of North Wall Of Tower	Leith Dock Commission	7/1/1932	A0	FP004760.TIF
4117	4103	Grain Warehouse; West And East Walls Of Tower	Leith Dock Commission	7/1/1932	A0	FP004761.TIF
4116	4102	Grain Warehouse; East And West Curtain Walls	Leith Dock Commission	7/1/1932	A0	FP004762.TIF
4115	4101	Grain Warehouse; North Curtain Wall & North And East Walls Of Stairwell	Leith Dock Commission	7/1/1932	A1	FP004763.TIF
2652	4483	Weighbridge; Foundation Plan; No 7 Coal Hoist	Henry Pooley & Sons Ltd	8/27/1931	A0	FP004981.TIF
4276	4478	No 3 Coal Hoist; Wagon Turntable; Catches And Pockets	Leith Dock Commission	9/5/1931	A2	FP004986.TIF
4275	4477	No 3 Coal Hoist; Wagon Turntable; Cribbing	Cowans Sheldon & Co Ltd	9/13/1931	A2	FP004987.TIF

Drg No	Plan No	Title of Drawing	Prep By	Date	Size	Filename
4273	4475	Live Ring & Rollers, Standard Wagon Turntables	Cowans Sheldon & Co Ltd	9/13/1931	A0	FP004989.TIF
4271	4473	General Arrangement, Wagon Turntable	Cowans Sheldon & Co Ltd	9/13/1931	A0	FP004990.TIF
2939	3888	Drainage Plan	Leith Harbour & Docks	7/1/1932	A0	FP005070.TIF
2931	3885	New Grain Warehouse Imperial Dock, Transverse Section And Details Of Stairwell	Leith Harbour & Docks	7/1/1932	A0	FP005071.TIF
2929	3883	Grain Warehouse; North Elevation	Leith Dock Commission	8/15/1931	A0	FP005072.TIF
2928	3882	Grain Warehouse; South Elevation	Leith Dock Commission	8/15/1931	A0	FP005073.TIF
2927	3881	Grain Warehouse; East Elevation	Leith Dock Commission	8/15/1931	A0	FP005074.TIF
2926	3880	New Grain Warehouse Imperial Dock, West Elevation	Leith Harbour & Docks	8/15/1931	A0	FP005075.TIF
8615	7876	General Arrangement Of New East Walls & West Walls	Rendel Palmer & Tritton Ltd	8/9/1966	A0	FP005121.TIF
7337	8873	Grain Silo; Outloading	Simon-Carves Handling Ltd	11/25/1957	A0	FP005992.TIF
8693	9216	Imperial West Sub Station. General Arrangement Of 13 Panel Type Fg/816 Switchboard	Johnson & Phillips Ltd	9/9/1966	A0	FP006393.TIF
16697	0	Grain Warehouse; West Elevation	Leith Dock Commission	8/15/1931	A1	FP009008.TIF
16697	0	Grain Warehouse; East Elevation	Leith Dock Commission	8/15/1931	A1	FP009009.TIF
16697	0	Grain Warehouse; South Elevation	Leith Dock Commission	8/15/1931	A1	FP009010.TIF
16697	0	New Grain Warehouse Imperial Dock, Longitudinal Section B-b	Leith Harbour & Docks	8/15/1931	A1	FP009011.TIF
16697	0	New Grain Warehouse Imperial Dock, Transverse Section And Details Of Stairwell	Leith Harbour & Docks	8/15/1931	A1	FP009012.TIF

Drg No	Plan No	Title of Drawing	Prep By	Date	Size	Filename
16697	0	Grain Warehouse; South Elevation. Replacement Of Windows. Tender Drawings.	Leith Dock Commission	8/15/1931	A1	FP009013.TIF
16697	0	Grain Warehouse; West Elevation. Replacement Of Windows.	Leith Dock Commission	8/15/1931	A1	FP009014.TIF
16697	0	Grain Warehouse; East Elevation. Replacement Of Windows.	Leith Dock Commission	8/15/1931	A1	FP009015.TIF
16697	0	New Grain Warehouse Imperial Dock. Replacement Of Windows.	Leith Dock Commission	8/15/1931	A1	FP009016.TIF
16697		New Grain Warehouse Imperial Dock, Transverse Section And Details Of Stairwell. Replacement Of Windows.	Leith Harbour & Docks	8/15/1931	A1	FP009017.TIF
16697		New Grain Warehouse Imperial Dock, Longitudinal Section B-B. Replacement Of Windows.	Leith Harbour & Docks	8/15/1931	A1	FP009018.TIF
16697		Grain Warehouse, East Elevation replacement Of Windows.	Leith Dock Commission	8/15/1931	A1	FP009019.TIF
16697		New Grain Warehouse Imperial Dock, Transverse Section And Details Of Stairwell. Replacement Of Windows.	Leith Harbour & Docks	8/15/1931	A1	FP009020.TIF
16697		Grain Warehouse; West Elevation. Replacement Of Windows.	Leith Dock Commission	8/15/1931	A1	FP009021.TIF
16697	0	New Grain Warehouse Imperial Dock, South Elevation. Replacement Of Windows.	Leith Dock Commission	8/15/1931	A1	FP009022.TIF
6778	6877	Grain Warehouse Extension; Railtracks; Alterations	Leith Dock Commission	9/7/1957	A1	FP023036.TIF
7335	6873	Grain Warehouse Extension; Bin Storage Extension;	Simon-Carves Handling Ltd	2/4/1957	A0	FP023042.TIF
7336	6872	Grain Warehouse Extension; Basement Plan; Holes For Conveyors;D1;D2;D3;D4 And D5	Leith Dock Commission	2/6/1957	A0	FP023043.TIF
7333	6871	Grain Warehouse Extension; Sliding Progress Detail; External Wall Defects Locations	Leith Dock Commission	9/5/1958	A0	FP023044.TIF
7237	6870	Grain Warehouse Extension; Services; Drainage Details	Kinnear & Gordon	9/5/1958	A1	FP023045.TIF
7209	6869	Grain Warehouse Extension; Site Plan; Existing	Leith Dock Commission	5/9/1957	A1	FP023046.TIF

Drg No	Plan No	Title of Drawing	Prep By	Date	Size	Filename
7310	6868	Grain Warehouse Extension; Conveyors; Automatic Cut-Off For Throw-Off Carriages; Arrangement And Details	Leith Dock Commission	6/18/1958	A0	FP023047.TIF
7353	6868A	Grain Warehouse Extension; Dust Collecting Systems; Operating Diagram (Plan No 6868/a)	Leith Dock Commission	11/13/1958	A1	FP023048.TIF
7202	6867	Grain Warehouse Extension; General Arrangement	Henry Simon Ltd	9/2/1957	A1	FP023049.TIF
7201	6866	Grain Warehouse Extension; Revolving Cowl; General Arrangement	Henry Simon Ltd	9/2/1957	A1	FP023050.TIF
7233	6865	Grain Warehouse Extension; Weathering Apron; Plant Above Bins; Detail And Arrangement	Simon-Carves Handling Ltd	12/20/1957	A0	FP023051.TIF
7234	6864	Grain Warehouse Extension; Weathering Plates And Additional Duct Supports; Details	Simon-Carves Handling Ltd	12/20/1957	A0	FP023052.TIF
7226	6863	Grain Warehouse Extension; Support Clip For Duct From Fan To Cyclone; Detail Plant Below Bins	Simon-Carves Handling Ltd	11/8/1957	A0	FP023053.TIF
7313	6862	Grain Warehouse Extension; Cleaning Doors For Ducting; Arrangement And Details	Simon-Carves Handling Ltd	7/17/1958	A1	FP023054.TIF
7311	6861	Grain Warehouse Extension; Duct For Plat Above Bins; Modifications; Additional; Detail	Simon-Carves Handling Ltd	6/29/1958	A2	FP023055.TIF
7312	6860	Grain Warehouse Extension; Ducting For Dust Collecting Plant; General Arrangement; Plans Above And Below Bins	Simon-Carves Handling Ltd	6/29/1958	A0	FP023056.TIF
7194	6859	Grain Warehouse Extension; Ducting For Dust Collecting Plant; General Arrangement; Elevations	Simon-Carves Handling Ltd	12/20/1957	A0	FP023057.TIF
7291	6858	Grain Warehouse Extension; Reinforcement; Bar Bending Schedule; Replacement; Roof Beams	Kinnear & Gordon	10/23/1957	A3	FP023058.TIF
7290	6857	Grain Warehouse Extension; Reinforcement; Bar Bending Schedule; Existing Building; Roof Beams	Kinnear & Gordon	10/3/1957	A1	FP023059.TIF
7289	6856	Grain Warehouse Extension; Reinforcement; Bar Bending Schedule; Cyclone Housing Walls And Roof	Kinnear & Gordon	10/3/1957	A1	FP023060.TIF
7288	6855	Grain Warehouse Extension; Reinforcement Bar Bending Schedule; Roof Beams; Roof Slab	Kinnear & Gordon	9/27/1957	A1	FP023061.TIF
7287	6854	Grain Warehouse Extension; Reinforcement; Bar Bending Schedule; Roof Beams	Kinnear & Gordon	9/25/1957	A1	FP023062.TIF

Drg No	Plan No	Title of Drawing	Prep By	Date	Size	Filename
7286	6853	Grain Warehouse Extension; Reinforcement; Bar Bending Schedule; Entablature Slab; Roof Slab	Kinnear & Gordon	9/17/1957	A1	FP023063.TIF
7285	6852	Grain Warehouse Extension; Reinforcement; Bar Bending Schedule; Walls And Columns Above Distributing Floor	Kinnear & Gordon	8/20/1957	A1	FP023064.TIF
7284	6851	Grain Warehouse Extension; Reinforcement; Bar Bending Schedule; Distribution Floor	Kinnear & Gordon	7/22/1957	A1	FP023065.TIF
7283	6850	Grain Warehouse Extension; Reinforcement; Bar Bending Schedule; Bin Wall Columns	Kinnear & Gordon	5/22/1957	A1	FP023066.TIF
7282	6849	Grain Warehouse Extension; Reinforcement; Bar Bending Schedule; Bin Walls	Kinnear & Gordon	5/10/1957	A1	FP023067.TIF
7280	6847	Grain Warehouse Extension; Reinforcement; Bar Bending Schedule; Walls Up To Entablature Slab; Granolithic Finish To Bin Bottoms	Kinnear & Gordon	6/12/1957	A1	FP023068.TIF
7279	6846	Grain Warehouse Extension; Reinforcement; Bar Bending Schedule; Pipe Cappings - Walls; Collecting Floor Slab	Kinnear & Gordon	1/30/1957	A1	FP023069.TIF
7278	6845	Grain Warehouse Extension; Reinforcement; Bar Bending Schedule; Entablature Slab; Pile Cappings And Columns	Kinnear & Gordon	1/22/1957	A1	FP023070.TIF
7185	6844	Grain Warehouse Extension; Runway Beam; Steelwork Details	Redpath Brown & Co Ltd	7/6/1957	A1	FP023071.TIF
7186	6843	Grain Warehouse Extension; Runway Beam; Section; Long Bolting To Concrete Roof; Details	Redpath Brown & Co Ltd	7/6/1957	A2	FP023072.TIF
7256	6842	Grain Warehouse Extension; R S J's Forming Cat-Head; Plan; Elevation; Details	Kinnear & Gordon	6/13/1958	A1	FP023073.TIF
7276	6841	Grain Warehouse Extension; Existing Roof Beams; Reinforcement; Beam 38	Kinnear & Gordon	6/24/1958	A1	FP023074.TIF
7275	6840	Grain Warehouse Extension; Existing Roof Beams; Reinforcement; Beams; 36; 37; 39 And 40	Kinnear & Gordon	6/24/1958	A1	FP023075.TIF
7274	6839	Grain Warehouse Extension; Cyclone Housing Roof; Reinforcement; Plans; Sections	Kinnear & Gordon	6/24/1958	A1	FP023076.TIF
7270	6838	Grain Warehouse Extension; Roof Beams; Reinforcement; Beams; 31; 32; 33; 34 And 35	Kinnear & Gordon	6/24/1958	A1	FP023077.TIF
7269	6837	Grain Warehouse Extension; Roof Beams; Reinforcement; Beams; 3, 8, 13, 18, 23 And 28	Kinnear & Gordon	6/24/1958	A1	FP023078.TIF

Drp No	Plan No	Title of Drawing	Prep By	Date	Size	Filename
7268	6836	Grain Warehouse Extension; Roof Beams; Reinforcement; Beams 1,2,4,5,6,7,9,10,11,12,14,15,16,17,19,20,21,22,24,25,26,27,29 And 30	Kinnear & Gordon	6/24/1958	A1	FP023079.TIF
7272	6835	Grain Warehouse Extension; Main Roof; Plan; Beam Locations	Kinnear & Gordon	6/24/1958	A1	FP023080.TIF
7267	6834	Grain Warehouse Extension; Roof; Reinforcement; Sections	Kinnear & Gordon	6/24/1958	A1	FP023081.TIF
7266	6833	Grain Warehouse Extension; Roof; Reinforcement; Plan	Kinnear & Gordon	6/24/1958	A1	FP023082.TIF
7250	6832	Grain Warehouse Extension; Roof Over Link At Collecting Floor Level; Reinforcement; Plans; Sections	Kinnear & Gordon	6/13/1958	A1	FP023083.TIF
7224	6831	Grain Warehouse Extension; Distribution Floor; Part Plan	Leith Dock Commission	11/6/1957	A1	FP023084.TIF
7183	6830	Grain Warehouse Extension; Distribution Floor; Plan; Arrangement Of Floor Castings	Simon-Carves Handling Ltd	6/26/1957	A1	FP023085.TIF
7271	6828	Grain Warehouse Extension; Cyclone Housing; Decking; Plans; Sections	Kinnear & Gordon	6/24/1958	A0	FP023087.TIF
7262	6827	Grain Warehouse Extension; Distributing Floor; Reinforcement; Sections	Kinnear & Gordon	6/24/1958	A1	FP023088.TIF
7261	6826	Grain Warehouse Extension; Distributing Floor; Reinforcement Plans; Panel G To Moto Bars	Kinnear & Gordon	6/24/1958	A1	FP023089.TIF
7259	6825	Grain Warehouse Extension; Distributing Floor; Reinforcement; Plans; Panels; G To M; Bottom Bars	Kinnear & Gordon	6/24/1958	A1	FP023090.TIF
7260	6824	Grain Warehouse Extension; Distributing Floor; Reinforcement; Plans; Panels A To F; Top Bars	Kinnear & Gordon	6/24/1958	A1	FP023091.TIF
7258	6823	Grain Warehouse Extension; Distributing Floor; Reinforcement; Plans; Panels A To F; Bottom Bars	Kinnear & Gordon	6/24/1958	A1	FP023092.TIF
7121A	6822	Grain Warehouse Extension; Hopper Bottoms And Templates; Details (Drawing No 7121/a)	Leith Dock Commission	2/22/1957	A0	FP023093.TIF
7257	6821	Grain Warehouse Extension; Granolithic Finish To Bin Bottoms; Reinforcement; Plan; Sections	Kinnear & Gordon	6/13/1958	A1	FP023094.TIF
7249	6820	Grain Warehouse Extension; Entablature Slab; Reinforcement; Sections	Kinnear & Gordon	6/13/1958	A1	FP023095.TIF

Drg No	Plan No	Title of Drawing	Prep By	Date	Size	Filename
7248	6819	Grain Warehouse Extension; Entablature Slab; Reinforcement; Sections	Kinnear & Gordon	6/13/1958	A1	FP023096.TIF
7247	6818	Grain Warehouse Extension; Entablature Slab; Reinforcement; Plan; Top Bars	Kinnear & Gordon	6/13/1958	A1	FP023097.TIF
7246	6817	Grain Warehouse Extension; Entablature Slab; Reinforcement; Plan; Bottom Bars	Kinnear & Gordon	6/13/1958	A1	FP023098.TIF
7243	6816	Grain Warehouse Extension; Collecting Floor; Reinforcement; Sections	Kinnear & Gordon	6/12/1958	A1	FP023099.TIF
7242	6815	Grain Warehouse Extension; Collecting Floor; Reinforcement; Plan; Top Steel	Kinnear & Gordon	6/12/1958	A1	FP023100.TIF
7241	6814	Grain Warehouse Extension; Collecting Floor; Reinforcement; Plan; Bottom Steel	Kinnear & Gordon	6/12/1958	A1	FP023101.TIF
7168	6813	Grain Warehouse Extension; Windows; Details	Maclean & Co Ltd	6/1/1957	A1	FP023102.TIF
7314	6812	Gain Warehouse Extension; Cat-Head Opening On Distributing Floor; Elevation; Sections; Pre-Cast Concrete Components Details	Leith Dock Commission	7/23/1958	A1	FP023103.TIF
7277	6811	Grain Warehouse Extension; Existing Building; New Columns; Reinforcement; Bar Bending Schedule; Elevations	Kinnear & Gordon	6/24/1958	A1	FP023104.TIF
7294A	6810A	Grain Warehouse Extension; Defects Inspection; Details Of Phase 3 Fallouts; Elevations; Key Plan	Leith Dock Commission	3/22/1958	A1	FP023105.TIF
7294	6810	Grain Warehouse Extension; Defects Inspection; Details Of Phase 3 Fallouts; Elevations; Key Plan	Leith Dock Commission	3/22/1958	A1	FP023106.TIF
7273	6809	Grain Warehouse Extension; Cyclone Housing Walls; Reinforcement; Elevations; Sections	Kinnear & Gordon	6/24/1958	A1	FP023107.TIF
7264	6808	Grain Warehouse Extension; Walls Above Distributing Floor; Reinforcement; Elevations; Sections	Kinnear & Gordon	6/24/1958	A1	FP023108.TIF
7263	6807	Grain Warehouse Extension; Walls And Columns Above Distributing Floor; Reinforcement; Elevations; Sections	Kinnear & Gordon	6/24/1958	A1	FP023109.TIF
7265	6806	Grain Warehouse Extension; Distributing Floor And Walls Above; Key Plan	Kinnear & Gordon	6/24/1958	A1	FP023110.TIF
7255	6805	Grain Warehouse Extension; Ladders Supporting Bar Splices At Construction Joints; Reinforcement; Elevation; Detail	Kinnear & Gordon	6/13/1958	A1	FP023111.TIF

Drg No	Plan No	Title of Drawing	Prep By	Date	Size	Filename
7254	6804	Grain Warehouse Extension; Bin Wall Columns; Reinforcement; Plans; Elevations	Kinnear & Gordon	6/13/1958	A1	FP023112.TIF
7253	6803	Grain Warehouse Extension; Walls Over 5.0feet Above Entablature Slab; Reinforcement; Plans	Kinnear & Gordon	6/13/1958	A1	FP023113.TIF
7252	6802	Grain Warehouse Extension; Walls Up To 5.0ft Above Entablature Slab; Reinforcement; Plans	Kinnear & Gordon	6/13/1958	A1	FP023114.TIF
7251	6801	Grain Warehouse Extension; Bin Walls And Columns; Key Plan	Kinnear & Gordon	6/13/1958	A1	FP023115.TIF
7167	6985	Dry Dock; Electric Travelling Crane;15/3t;Bogie;Main Isolating Switch; Support Detail	Cowans Sheldon & Co Ltd	6/10/1957	A2	FP023126.TIF
7164	6930	No 7 Shed Quay;75t Travelling Crane; Electrical Wiring Diagram	Leith Dock Commission	4/25/1957	A0	FP023180.TIF
7153	7089	Sub Station; Electrical; Contacts Arrangement; Ferguson Pailin Type Rc Control Switches	Johnson & Phillips Ltd	3/8/1957	A2	FP023257.TIF
7152	7088	Sub Station; Electrical; Contacts Arrangement; Ferguson Pailin Type Rc Control Switches	Johnson & Phillips Ltd	3/8/1957	A2	FP023257.TIF
7151	7087	Sub Station; Electrical; Wiring Diagram; Wall Mounted Control Panel	Johnson & Phillips Ltd	3/8/1957	A1	FP023259.TIF
7150	7085	Sub Station; Electrical; Wiring Diagram; Metal Clad Units; Type Fg/sb16	Johnson & Phillips Ltd	3/8/1957	A0	FP023261.TIF
7144	7084	Sub Station; Electrical; General Arrangement; Metal Clad Unit; Type Fg/sb16	Johnson & Phillips Ltd	3/8/1957	A0	FP023262.TIF
7146	7082	Sub Station; Electrical; General Arrangement; Lt Switchboard	Johnson & Phillips Ltd	2/25/1957	A0	FP023264.TIF
7147	7081	Sub Station; Electrical; Wiring Diagram; Ironclad Switchboard; Type Sf And Lt	Johnson & Phillips Ltd	6/4/1957	A0	FP023265.TIF
7593	7010	Ship Lock; Gates; General Plan;Elevation;70 Ft Gates	Leith Dock Commission	9/22/1932	A0	FP023299.TIF
7142	7108	No 7 Shed; Electrical; D.C. Switchboard; Elevations	The English Electric Co. Ltd	3/15/1957	A2	FP023398.TIF
7763	7293	Grain Handling Plant; Flexible Pipes; Safety Ropes; Arrangement And Details	Simon-Carves Handling Ltd	3/1/1962	A0	FP023413.TIF

Drg No	Plan No	Title of Drawing	Prep By	Date	Size	Filename
7365	7203	Gain Warehouse; Spouting Under Delivery Bins; Details	Simon-Carves Handling Ltd	12/3/1958	A0	FP023504.TIF
7364	7202	Grain Warehouse; Portable Spout; Two Way Valve Box; Details; Location	Simon-Carves Handling Ltd	12/3/1958	A0	FP023505.TIF
7881	7333	Grain Warehouse; Surface Damage Inspection; Elevations	Leith Dock Commission	8/30/1963	A3	FP023574.TIF
0	7486	Grain Handling Plant; Transfer Conveyor; Electrical; Crane Mounted Control Station	Brookhirst Igranic	7/9/1967	A2	FP023620.TIF
0	7484	Grain Handling Plant; Transfer Conveyor; Electrical; Direct-On-Line Starter For Transshipment Crane Conveyor Tc2; Wiring Diagram	Brookhirst Igranic	7/9/1967	A2	FP023622.TIF
0	7483	Grain Handling Plant; Transfer Conveyor; Electrical; Direct-On-Line Starter For Telescopic And Luffing Motors; Wiring Diagram	Brookhirst Igranic	7/9/1967	A2	FP023623.TIF
0	7700	Grain Warehouse Extension; Beams Over Spout Holes In Storage Bin Entablature Slab	Kinnear & Gordon	7/11/1967	A1	FP023763.TIF
9116	7699	Grain Warehouse Extension; Lift Shaft; Reinforcement	Kinnear & Gordon	8/11/1967	A1	FP023764.TIF
9115	7698	Grain Warehouse Extension; Lift Shaft; General Arrangement	Kinnear & Gordon	8/14/1967	A1	FP023765.TIF
9114	7697	Grain Warehouse Extension; Extension; Stairs; Reinforcement	Kinnear & Gordon	8/2/1967	A1	FP023766.TIF
9073	7695	Grain Warehouse Extension; Bin Walls; Slide Iii; Reinforcement (Sheet 2 Of 2)	Kinnear & Gordon	6/16/1967	A1	FP023767.TIF
9072	7694	Grain Warehouse Extension; Bin Walls; Slide Iii; Reinforcement (Sheet 1 Of 2)	Kinnear & Gordon	6/13/1967	A1	FP023768.TIF
9071	7693	Grain Warehouse Extension; Bin Walls; Slide Iii; Reinforcement In Bottom 5'0'	Kinnear & Gordon	6/14/1967	A1	FP023769.TIF
9070	7692	Grain Warehouse Extension; Bin Walls; Slide Iii; General Arrangement	Kinnear & Gordon	6/19/1967	A1	FP023770.TIF
9061	7691	Grain Warehouse Extension; Loading Block Entablature; Slab Reinforcement (Sheet 3 Of 3)	Kinnear & Gordon	6/5/1967	A1	FP023771.TIF
9060	7690	Grain Warehouse Extension; Loading Block Entablature; Slab; Reinforcement (Sheet 2 Of 3)	Kinnear & Gordon	6/6/1967	A1	FP023772.TIF

Drg No	Plan No	Title of Drawing	Prep By	Date	Size	Filename
9059	7689	Grain Warehouse Extension; Loading Block Entablature Slab; Reinforcement (Sheet 1 Of 3)	Kinnear & Gordon	6/6/1967	A1	FP023773.TIF
9052	7688	Grain Warehouse Extension; Loading Block Entablature Slab; General Arrangement	Kinnear & Gordon	5/19/1967	A1	FP023774.TIF
9042	7687	Grain Warehouse Extension; Distributing Floor Over Slide Ii; General Arrangement; Reinforcement (Sheet 2 Of 2)	Kinnear & Gordon	5/9/1967	A1	FP023775.TIF
9041	7686	Grain Warehouse Extension; Distributing Floor Over Slide Ii; General Arrangement; Reinforcement (Sheet 1 Of 2)	Kinnear & Gordon	4/17/1967	A1	FP023776.TIF
9046	7685	Grain Warehouse Extension; Walls And Columns Above Weighing Floor; Reinforcement (Sheet 3 Of 3)	Kinnear & Gordon	5/11/1967	A1	FP023777.TIF
9045	7684	Grain Warehouse Extension; Walls And Olumns Above Weighing Floor; Reinforcement (Sheet 2 Of 3)	Kinnear & Gordon	5/10/1967	A1	FP023778.TIF
9043	7683	Grain Warehouse Extension; Wall And Columns Above Weighing Floor; Reinforcement (Sheet 1 Of 3)	Kinnear & Gordon	5/10/1967	A1	FP023779.TIF
9021	7682	Grain Warehouse Extension; Alterations To Existing Building On Distributing Floor Level; Reinforcement	Kinnear & Gordon	5/3/1967	A1	FP023780.TIF
9020	7681	Grain Warehouse Extension; Infill Panels Between Main Bins; Pockets And Sinkings	Kinnear & Gordon	4/27/1967	A1	FP023781.TIF
9018	7680	Grain Warehouse Extension; Beam Extensions Below Weighing Floor; Reinforcement	Kinnear & Gordon	4/25/1967	A1	FP023782.TIF
9007	7679	Grain Warehouse Extension; Slide I; Splice Bars To Walls At Stairwell; Reinforcement	Kinnear & Gordon	4/8/1967	A1	FP023783.TIF
9006	7678	Grain Warehouse Extension; Infill Panels Between Main Bins And Loading Bins; Reinforcement	Kinnear & Gordon	4/11/1967	A1	FP023784.TIF
9005	7677	Grain Warehouse Extension; Distributing Floor Over Slide I; General Arrangement; Reinforcement;(Sheet 2 Of 2)	Kinnear & Gordon	4/9/1967	A1	FP023785.TIF
9004	7676	Grain Warehouse Extension; Columns Between Distributing Floor And Roof; Reinforcement	Kinnear & Gordon	4/13/1967	A1	FP023786.TIF
9003	7675	Grain Warehouse Extension; Distributing Floor Over Slide I; General Arrangement; Reinforcement (Sheet 1 Of 2)	Kinnear & Gordon	4/8/1967	A1	FP023787.TIF
9008	7674	Grain Warehouse Extension; Bin Walls; Slide Ii; Reinforcement	Kinnear & Gordon	4/13/1967	A1	FP023788.TIF

Drg No	Plan No	Title of Drawing	Prep By	Date	Size	Filename
9002	7673	Grain Warehouse Extension; Bin Walls; Slide Ii; Reinforcement In Bottom 5'0'	Kinnear & Gordon	4/7/1967	A1	FP023789.TIF
9001	7672	Grain Warehouse Extension; Bin Walls; Slide Ii; General Arrangement	Kinnear & Gordon	3/26/1967	A1	FP023790.TIF
9000	7671	Grain Warehouse Extension; Weighfloor Slab And Beams; Reinforcement (Sheet 1 Of 4)	Kinnear & Gordon	3/30/1967	A0	FP023791.TIF
8999	7670	Grain Warehouse Extension; Weighing Floor Slab Amd Beams; Reinforcement (Sheet 3 Of 4)	Kinnear & Gordon	3/29/1967	A1	FP023792.TIF
8998	7669	Grain Warehouse Extension; Weighing Floor Slab And Beams; Reinforcement (Sheet 2 Of 4)	Kinnear & Gordon	3/30/1967	A1	FP023793.TIF
8997	7668	Grain Warehouse Extension; Weighing Floor Slab And Beams; Reinforcement (Sheet 1 Of 4)	Kinnear & Gordon	3/22/1967	A1	FP023794.TIF
8953	7667	Grain Warehouse Extension; Bin Walls; Slide I; Reinforcement; (Sheet 3 Of 3)	Kinnear & Gordon	3/16/1967	A1	FP023795.TIF
8952	7666	Grain Warehouse Extension; Bin Walls; Slide I; Reinforcement (Sheet 2 Of 3)	Kinnear & Gordon	3/20/1967	A1	FP023796.TIF
8951	7665	Grain Warehouse Extension; Bin Walls; Slide I; Reinforcement (Sheet 1 Of 3)	Kinnear & Gordon	3/20/1967	A1	FP023797.TIF
8889	7663	Grain Warehouse Extension; Storage Bin Walls; Slide I; Reinforcement In Bottom 5'0' (Sheet 1 Of 2)	Kinnear & Gordon	2/18/1967	A1	FP023799.TIF
8888	7662	Grain Warehouse Extension; Storage Bin Walls; Slide I; General Arrangement	Kinnear & Gordon	2/17/1967	A1	FP023800.TIF
0	7661	Grain Warehouse Extension; Reinforcement To Column At Pulley Brackets	Kinnear & Gordon	2/10/1967	A0	FP023801.TIF
8835	7660	Grain Warehouse Extension; Pile Capping To North Wall Under Loading Bins; Reinforcement; Alterations To Suit Roller Shutters	Kinnear & Gordon	2/6/1967	A1	FP023802.TIF
8830	7659	Grain Warehouse Extension; Weighing Floor; Details Of Holes;	Kinnear & Gordon	2/2/1967	A1	FP023803.TIF
8811	7658	Grain Warehouse Extension; North Wall; Chases For Roller Shutter Doors	Kinnear & Gordon	1/23/1967	A1	FP023804.TIF
8903	7657	Grain Warehouse Extension; Weighing Floor; General Arrangement	Kinnear & Gordon	1/31/1967	A1	FP023805.TIF

Drg No	Plan No	Title of Drawing	Prep By	Date	Size	Filename
8814	7656	Grain Warehouse Extension; Combined Capping Copula Cap; Reinforcement	Kinnear & Gordon	1/12/1967	A1	FP023806.TIF
8950	7655	Grain Warehouse Extension; Stairwell And Lift Shaft; Precast Units	Kinnear & Gordon	1/10/1967	A0	FP023807.TIF
8798	7654	Grain Warehouse Extension; Bin Walls; Columns; Reinforcement	Kinnear & Gordon	1/7/1967	A0	FP023808.TIF
8794	7653	Grain Warehouse Extension; Storage Bin Entablature Slab; Reinforcement (Sheet 3 Of 3)	Kinnear & Gordon	12/24/1966	A1	FP023809.TIF
8793	7652	Grain Warehouse Extension; Storage Bins North Wall And Entablature Slab; Holes For Spouts; Dimensions	Kinnear & Gordon	12/28/1966	A1	FP023810.TIF
8782	7651	Grain Warehouse Extension; Pile Cap; Combined Capping B; Reinforcement	Kinnear & Gordon	12/22/1966	A1	FP023811.TIF
8792	7650	Grain Warehouse Extension; Collecting Floor; General Arrangement	Kinnear & Gordon	1/9/1967	A1	FP023812.TIF
8791	7649	Grain Warehouse Extension; Collecting Floor; Reinforcement	Kinnear & Gordon	12/26/1966	A1	FP023813.TIF
8790	7648	Grain Warehouse Extension; Storage Bin Entablature Slab; Reinforcement (Sheet 2 Of 3)	Kinnear & Gordon	12/23/1966	A1	FP023814.TIF
8789	7647	Grain Warehouse Extension; Storage Bin Entablature Slab; Reinforcement (Sheet 1 Of 3)	Kinnear & Gordon	12/20/1966	A1	FP023815.TIF
8764	7646	Grain Warehouse Extension; Pile Cap; Special Combined Capping; Reinforcement	Kinnear & Gordon	12/28/1966	A0	FP023816.TIF
0	7644	Grain Warehouse Extension; West Wall Of Existing Store; Sliding Door	Kinnear & Gordon	12/8/1966	A1	FP023817.TIF
8735	7643	Grain Warehouse Extension; Roller Shutter Motors; Arrangement	Kinnear & Gordon	12/1/1966	A1	FP023818.TIF
8729	7642	Grain Warehouse Extension; Pile Cap; Special Pile Capping (C) Reinforcement	Kinnear & Gordon	11/24/1966	A1	FP023819.TIF
0	7641	Grain Warehouse Extension; Sliding Doors; Details Of Openings; Locations	Kinnear & Gordon	11/17/1966	A1	FP023820.TIF
8702	7639	Grain Warehouse Extension; Collecting Floor Conveyors; Survey	Kinnear & Gordon	11/4/1966	A1	FP023821.TIF

Drg No	Plan No	Title of Drawing	Prep By	Date	Size	Filename
8723	7640	Grain Warehouse Extension; Walls Below Storage Bin Entablature; General Arrangement	Kinnear & Gordon	12/27/1966	A1	FP023822.TIF
8834	7638	Grain Warehouse Extension; Walls And Columns Below Weighing Floor; Reinforcement (Sheet 3 Of 3)	Kinnear & Gordon	2/7/1967	A1	FP023823.TIF
8833	7637	Grain Warehouse Extension; Walls And Columns Below Weighing Floor; Reinforcement (Sheet 2 Of 3)	Kinnear & Gordon	2/3/1967	A1	FP023824.TIF
8832	7636	Grain Warehouse Extension; Walls And Columns Below Weighing Floor; Reinforcement (Sheet 1 Of 3)	Kinnear & Gordon	1/31/1967	A1	FP023825.TIF
8911	7635	Grain Warehouse Extension; Walls And Columns Below Weighing Floor; General Arrangement	Kinnear & Gordon	2/7/1967	A1	FP023826.TIF
8771	7634	Grain Warehouse Extension; Joints In Bin Walls Between Slides; Details	Kinnear & Gordon	12/17/1966	A1	FP023827.TIF
7245	6800	Grain Warehouse Extension; Wall Up To Entablature Slab; Reinforcement; East Wall Elevation; Sections	Kinnear & Gordon	6/13/1958	A1	FP025851.TIF
7244	6799	Grain Warehouse Extension; Walls Up To Entablature Slab; Reinforcement; Elevations; North; South And West Walls	Kinnear & Gordon	6/13/1958	A1	FP025852.TIF
7239	6798	Grain Warehouse Extension; Wall; Foundations; Reinforcement; Elevations; Sections	Kinnear & Gordon	6/12/1958	A1	FP025853.TIF
7322	6797	Grain Warehouse Extension; Sliding Formwork; Hydraulic Jack Systems Layout	Leith Dock Commission	11/8/1958	A1	FP025854.TIF
7240	6796	Grain Warehouse Extension; Pile Cappings And Collecting Floor Columns; Reinforcement; Plans; Sections; Elevations	Kinnear & Gordon	6/12/1958	A1	FP025855.TIF
7218	6795	Grain Warehouse Extension; Piles; Piling Record	Kinnear & Gordon	5/22/1957	A1	FP025856.TIF
7217	6794	Grain Warehouse Extension; Piles; Foundations; Piling Record; Elevations; Nos 449 To 508	Leith Dock Commission	9/12/1957	A1	FP025857.TIF
7216	6793	Grain Warehouse Extension; Piles; Foundations; Piling Record; Elevations; Nos 389 To 448	Leith Dock Commission	9/12/1957	A1	FP025858.TIF
7215	6792	Grain Warehouse Extension; Piles; Foundations; Piling Record; Elevations; Nos 329 To 388	Leith Dock Commission	9/12/1957	A1	FP025859.TIF
7214	6791	Grain Warehouse Extension; Piles; Foundations; Piling Record; Elevations; Nos 269 To 329	Leith Dock Commission	9/12/1957	A1	FP025860.TIF

Drg No	Plan No	Title of Drawing	Prep By	Date	Size	Filename
7213	6790	Grain Warehouse Extension; Piles; Foundations; Piling Record; Elevations; Nos 209 To 268	Leith Dock Commission	9/12/1957	A1	FP025861.TIF
7212	6789	Grain Warehouse Extension; Piles; Foundations; Piling Record; Elevations; Nos 149 To 208	Leith Dock Commission	9/12/1957	A1	FP025862.TIF
7211	6788	Grain Warehouse Extension; Piles; Foundations. Piling Record; Elevations; Nos 73 To 148; No 1	Leith Dock Commission	9/12/1957	A1	FP025863.TIF
7210	6787	Grain Warehouse Extension; Piles; Foundations; Piling Record; Elevations; Nos 147 To 148; Nos 1 To 75	Leith Dock Commission	9/12/1957	A1	FP025864.TIF
7166	6786	Grain Warehouse Extension; Programme Of Works	John Laing & Son Ltd	1/25/1958	A1	FP025865.TIF
7132	6785	Grain Warehouse Extension; Programme And Progress Chart	Kinnear & Gordon	2/12/1957	A1	FP025866.TIF
7131	6784	Grain Warehouse Extension; Distributing Floor Link; Elevations; Sections; Details	Kinnear & Gordon	2/13/1957	A1	FP025867.TIF
7130	6783	Grain Warehouse; Extension; East Elevation	Leith Dock Commission	12/28/1956	A1	FP025868.TIF
7129	6782	Grain Warehouse Extension; Longitudinal Section	Kinnear & Gordon	9/30/1957	A1	FP025869.TIF
7128	6781	Grain Warehouse Extension; Transverse Section	Kinnear & Gordon	9/30/1957	A1	FP025870.TIF
7127	6780	Grain Warehouse Extension; Roof; Plan	Kinnear & Gordon	6/10/1958	A1	FP025871.TIF
7126	6779	Grain Warehouse Extension; Distributing Floor; Plan	Kinnear & Gordon	6/10/1958	A0	FP025872.TIF
7125	6778	Grain Warehouse Extension; Sectional Plan Through Bins	Kinnear & Gordon	6/10/1958	A1	FP025873.TIF
7124	6777	Grain Warehouse Extension; Collecting Floor; Plan	Kinnear & Gordon	6/10/1958	A1	FP025874.TIF
7123	6776	Grain Warehouse Extension; Foundations; Plan	Kinnear & Gordon	6/10/1958	A1	FP025875.TIF
7122	6775	Grain Warehouse Extension; Site Plan; Location Plan	Kinnear & Gordon	1/29/1957	A1	FP025876.TIF

Drg No	Plan No	Title of Drawing	Prep By	Date	Size	Filename
7117A	6774	Grain Warehouse Extension; Fans And Cyclones; Revised Arrangement; Elevation Plan (Drawing No 7118/a)	Simon-Carves Handling Ltd	8/12/1957	A0	FP025877.TIF
7116	6773	Grain Warehouse Extension; Electrical; Proposed Power Cable Runs; Elevations; Plans	Simon-Carves Handling Ltd	2/5/1957	A0	FP025878.TIF
7114	6771	Grain Warehouse Extension;36 Inch Troughing Set; Cross-Sectional Arrangement	Simon-Carves Handling Ltd	1/25/1957	A0	FP025880.TIF
7113	6770	Grain Warehouse Extension;24 Inch Troughing Set; Cross-Sectional Arrangement	Simon-Carves Handling Ltd	1/25/1957	A0	FP025881.TIF
7110	6769	Grain Warehouse Extension;8 Feet Diameter Cyclones; Arrangement And Details	Simon-Carves Handling Ltd	1/30/1957	A0	FP025882.TIF
7106	6768	Grain Warehouse Extension; Electrical; Lighting Protective System; Layout; Elevation	Leith Dock Commission	7/8/1958	A1	FP025883.TIF
7105	6767	Grain Warehouse Extension; Electrical; Lighting Protective System; Layout; Plan	Leith Dock Commission	7/8/1958	A1	FP025884.TIF
7005	6766	Grain Warehouse Extension; Piles; Piling Plan	Kinnear & Gordon	1/24/1957	A1	FP025885.TIF
7004	6765	Grain Warehouse Extension; Site Survey; Ground Investigation; Sections	Kinnear & Gordon	2/21/1958	A1	FP025886.TIF
6778	6877	Grain Warehouse Extension; Railtracks; Alterations; General Plan	Leith Dock Commission	9/7/1957	A1	FP025974.TIF
7881	3882	Grain Warehouse; Surface Damage Inspection; Elevations	Leith Dock Commission	8/30/1963	A0	FP026046.TIF
7881	7333	Grain Warehouse; Surface Damage Inspection; Elevations	Leith Dock Commission	8/30/1963	A0	FP026047.TIF
7881	7333	Grain Warehouse; Surface Damage Inspection; Elevations	Leith Dock Commission	8/30/1963	A1	FP026048.TIF
9113	7696	Grain Warehouse Extension; Stairs; General Arrangement	Kinnear & Gordon	7/27/1967	A1	FP026107.TIF
8763	7645	Imperial Grain Warehouse, Details Of Special Combined Capping	Kinnear & Gordon	12/9/1966	A1	FP026108.TIF
8722	7633	Grain Warehouse Extension; Walls Below Storage Bin Entablature Slab; Reinforcement (Sheet 3 Of 3)	Kinnear & Gordon	11/16/1966	A1	FP026109.TIF

Drg No	Plan No	Title of Drawing	Prep By	Date	Size	Filename
8721	7632	Grain Warehouse Extension; Walls Below Storage Bin Entablature Slab; Reinforcement (Sheet 2 Of 3)	Kinnear & Gordon	11/15/1966	A1	FP026110.TIF
8720	7631	Grain Warehouse Extension; Walls Below Storage Bin Entablature Slab; Reinforcement (Sheet 1 Of 3)	Kinnear & Gordon	11/14/1966	A1	FP026111.TIF
8700	7629	Grain Warehouse Extension; Pile Caps; Collecting Floor Columns; Reinforcement	Kinnear & Gordon	11/21/1966	A1	FP026113.TIF
8493	7605	Grain Warehouse Extension; Piling; Plan	Kinnear & Gordon	11/21/1966	A1	FP026116.TIF
8699	7628	Grain Warehouse Extension; Wall; Foundations; Reinforcement	Kinnear & Gordon	11/10/1966	A0	FP026121.TIF
7627	7625	Extension; Pile Shafts	Kinnear & Gordon	8/23/1966	A1	FP026122.TIF
7627	7625	Grain Warehouse Extension; Roof Gutters; Mild Steel Traps; Detail	Kinnear & Gordon	7/7/1966	A0	FP026123.TIF
8561	7623	Grain Warehouse Extension; Road Loading Bay; Details	Kinnear & Gordon	6/30/1966	A1	FP026124.TIF
8601	7624	Grain Warehouse Extension; Junction With Existing Building At Distributing Floor; Detail	Kinnear & Gordon	7/22/1966	A0	FP026125.TIF
8572	7622	Grain Warehouse Extension; Main Bins And Stairwell; Section	Kinnear & Gordon	7/12/1966	A0	FP026126.TIF
8571	7621	Grain Warehouse Extension; Road Loading Bins; Section	Kinnear & Gordon	11/21/1966	A1	FP026127.TIF
8570	7620	Grain Warehouse Extension; Longitudinal Section	Kinnear & Gordon	7/13/1966	A0	FP026128.TIF
0	7619	Grain Warehouse;20000 Ton Extension; West Elevation	Leith Dock Commission	7/8/1966	A0	FP026129.TIF
0	7618	Grain Warehouse;20000 Ton Extension; North Elevation	Leith Dock Commission	11/21/1966	A0	FP026130.TIF
0	7617	Grain Warehouse;20000 Ton Extension; East Elevation	Leith Dock Commission	7/8/1966	A0	FP026131.TIF
8566	7616	Grain Warehouse Extension; Roof; Plan	Kinnear & Gordon	7/18/1966	A0	FP026132.TIF

Drg No	Plan No	Title of Drawing	Prep By	Date	Size	Filename
8564	7614	Grain Warehouse Extension; Sectional Plan Through Bins	Kinnear & Gordon	7/7/1966	A0	FP026133.TIF
8563	7613	Grain Warehouse Extension; Weighing Floor; Staircase; Plans	Kinnear & Gordon	8/10/1966	A0	FP026135.TIF
8562	7612	Grain Warehouse Extension; Collecting Floor; Plan	Kinnear & Gordon	11/21/1966	A0	FP026136.TIF
8600	7611	Grain Warehouse Extension; Foundation; Plan	Kinnear & Gordon	11/21/1966	A0	FP026137.TIF
8486	7610	Grain Warehouse Extension; S.A.I.;Sea Water Pipe Diversion; Plan	Kinnear & Gordon	12/9/1966	A1	FP026138.TIF
8492	7609	Grain Warehouse Extension; Site Investigation; Borehole Logs; Locations	Kinnear & Gordon	5/10/1966	A0	FP026139.TIF
9419	7795	Grain Intake Plant; Loading Out Facilities; Modified Arrangement	Simon-Carves Handling Ltd	5/26/1966	A0	FP026153.TIF
9362	7791	Grain Intake Plant; Exhaust Pipes Expansion Chamber; Detail	Simon-Carves Handling Ltd	12/5/1966	A0	FP026157.TIF
9330	7782	Grain Intake Plant; Electrical; Equipment Layout Diagram	Simon-Carves Handling Ltd	6/6/1967	A0	FP026166.TIF
9327	7779	Grain Intake Plant; D.O.L. Reversing Starter	Brookhirst Igranic	11/11/1966	A0	FP026169.TIF
9162	7774	Grain Intake Plant; Modification; Exhaust Pipes; Additional Silencer; Arrangement	Simon-Carves Handling Ltd	5/13/1966	A0	FP026174.TIF
9605	7772	Grain Warehouse Extension; Roller Door Motors; Distribution Trunking And Brackets	Forth Ports Authority	8/19/1968	A0	FP026176.TIF
9431	7769	Grain Warehouse Extension; Outloading Floor Chute; Cover Plates	Forth Ports Authority	3/1/1968	A0	FP026179.TIF
9404	7765	Grain Warehouse Extension; Electrical; Distribution Diagram; Under Bins Lighting And Small Power; Main Distribution; Weigher Floor And Loading Bay Lighting	Simon-Carves Handling Ltd	2/19/1968	A0	FP026180.TIF
9414	7768	Grain Warehouse Extension; Electrical; Distribution Diagram; Under Bins Lighting And Small Power; Main Distribution; Weigher Floor And Loading Bay Lighting	Simon-Carves Handling Ltd	2/19/1968	A0	FP026181.TIF

Drg No	Plan No	Title of Drawing	Prep By	Date	Size	Filename
9413	7767	Grain Warehouse Extension. Electrical; Lighting And Small Power; Distribution Diagram; Over Bins And Staircase	Simon-Carves Handling Ltd	2/19/1968	A0	FP026182.TIF
9404	7765	Grain Warehouse Extension; Electrical; Distribution Diagram; Lighting; Small Power And Main Distribution	Leith Dock Commission	1/29/1968	A0	FP026183.TIF
8742	7761	Grain Warehouse Extension; Weigher Tracks Under Loading-Out Bins; Arrangement And Details	Simon-Carves Handling Ltd	8/12/1966	A0	FP026185.TIF
8741	7760	Grain Warehouse Extension; Loading Out Bins; Hopper Template At Base; Of Entablature; Detail Of Hookbolt	Simon-Carves Handling Ltd	5/19/1966	A2	FP026186.TIF
8740	7759	Grain Warehouse Extension; Storage Bin Outlets; Hoppers And Templates; Details	Simon-Carves Handling Ltd	5/5/1966	A0	FP026187.TIF
8685	7758	Grain Warehouse Extension; Spouting Through Entablature Level And Bin Wall To Conveyors D3;D4 And D5;Detail	Simon-Carves Handling Ltd	8/12/1966	A1	FP026188.TIF
8685	7758	Grain Warehouse Extension; Spouting Through Entablature Level And Bin Wall To Conveyors D3;D4 And D5;Detail	Simon-Carves Handling Ltd	8/12/1966	A2	FP026189.TIF
8671	7757	Grain Warehouse Extension; Weigher Floor At Loading-Out Bays; Details Of Holes; Positions B1 And B6;C1 And C6 And D1 And D6	Simon-Carves Handling Ltd	9/19/1966	A0	FP026190.TIF
8671	7757	Grain Warehouse Extension; Weigher Floor At Loading-Out Bays; Details Of Holes; Positions B1 And B6;C1 And C6 And D1 And D6	Simon-Carves Handling Ltd	9/19/1966	A0	FP026191.TIF
8670	7756	Grain Warehouse Extension; Weigher Floor In Loading-Out Bays; Details Of Holes; Positions A1 And A6	Simon-Carves Handling Ltd	9/16/1966	A0	FP026192.TIF
8670	7756	Grain Warehouse Extension; Weigher Floor In Loading-Out Bays; Details Of Holes; Positions A1 And A6	Simon-Carves Handling Ltd	11/5/1966	A0	FP026193.TIF
8669	7755	Grain Warehouse Extension; Weigher Floor; Details Of Holes Adjacent To Column a	Simon-Carves Handling Ltd	9/15/1966	A0	FP026194.TIF
8669	7755	Grain Warehouse Extension; Weigher Floor; Details Of Holes Adjacent To Column a	Simon-Carves Handling Ltd	9/15/1966	A0	FP026195.TIF
8668	7754	Grain Warehouse Extension; Weigher Floor; Details Of Holes In Loading-Out Bay; 91'10.3/4' Level	Simon-Carves Handling Ltd	10/7/1966	A0	FP026196.TIF
8668	7754	Grain Warehouse Extension; Weigher Floor; Details Of Holes In Loading-Out Bay; 91'10.3/4' Level	Simon-Carves Handling Ltd	10/7/1966	A0	FP026197.TIF

Drng No	Plan No	Title of Drawing	Prep By	Date	Size	Filename
8651	7752	Grain Warehouse Extension; Silos; Loading-Out Block; Sections	Simon-Carves Handling Ltd	5/11/1966	A0	FP026199.TIF
8651	7752	Grain Warehouse Extension; Silos; Loading-Out Block; Sections	Simon-Carves Handling Ltd	5/11/1966	A0	FP026200.TIF
8650	7751	Grain Warehouse Extension; Lift Shaft; Set-Out	Simon-Carves Handling Ltd	5/13/1966	A0	FP026201.TIF
8649	7750	Grain Warehouse Extension; Loading-Out Bins; Bin Entablature; Templates And Hookbolts Layout Plan	Simon-Carves Handling Ltd	5/12/1966	A0	FP026202.TIF
8649	7750	Grain Warehouse Extension; Loading-Out Bins; Bin Entablature; Templates And Hookbolts Layout Plan	Simon-Carves Handling Ltd	5/12/1966	A0	FP026203.TIF
8648	7749	Grain Warehouse Extension bin Entablature; Sectional Plan Of Storage Bins; Plan View Of 2-Bin Outlets	Simon-Carves Handling Ltd	5/5/1966	A0	FP026204.TIF
8648	7749	Grain Warehouse Extension bin Entablature; Sectional Plan Of Storage Bins; Plan View Of 2-Bin Outlets	Simon-Carves Handling Ltd	5/5/1966	A0	FP026205.TIF
8584	7748	Grain Warehouse Extension; Spouting Through Entablature Level And Bin Wall; Setting-Out	Simon-Carves Handling Ltd	7/21/1966	A0	FP026206.TIF
8583	7747	Grain Warehouse Extension; 24' Wide Belt Collection Conveyors; Tension Frame Details	Simon-Carves Handling Ltd	7/18/1966	A0	FP026207.TIF
8582	7746	Grain Warehouse Extension; Conveyors Below Bins; Details Of H D Bolt Positions	Simon-Carves Handling Ltd	7/15/1966	A0	FP026208.TIF
8582	7746	Grain Warehouse Extension; Conveyors Below Bins; Details Of H D Bolt Positions	Simon-Carves Handling Ltd	7/15/1966	A0	FP026209.TIF
8581	7745	Grain Warehouse Extension; Goods Lift; General Arrangement	G H P Lifts Ltd	7/19/1966	A0	FP026210.TIF
8580	7744	Grain Warehouse Extension; Loading-Out Bins; Ground Floor Plan; Arrangement Of Holes In Weigher Floor At 91' 10.3/4' Level	Simon-Carves Handling Ltd	11/18/1966	A0	FP026211.TIF
8579	7743	Grain Warehouse Extension; Details Of Holes In Floor Over Bins At 143'00' Level	Simon-Carves Handling Ltd	7/21/1966	A0	FP026212.TIF
8996	7742	Pneumatic Grain Plant; Modifications; Dust Control Equipment Details	Simon-Carves Handling Ltd	3/29/1967	A1	FP026213.TIF
8946	7741	Grain Warehouse Extension; Exhaust Pipes; Acoustic Hood Details	Simon-Carves Handling Ltd	3/7/1967	A0	FP026214.TIF

Drg No	Plan No	Title of Drawing	Prep By	Date	Size	Filename
8944	7740	Grain Warehouse Extension; Modifications;Suction And Exhaust; Piping And Floor Plate For Holmes Blower; Plan And Elevations	Simon-Carves Handling Ltd	8/28/1967	A0	FP026215.TIF
8765	7739	Grain Warehouse Extension; Modifications; Exhaust Pipes Expansion Chamber; Details	Simon-Carves Handling Ltd	12/5/1966	A0	FP026216.TIF
8366	7738	Grain Warehouse Extension; Silos; Revised Arrangement; Sections; Scheme B;Scheme a	Simon-Carves Handling Ltd	10/14/1965	A0	FP026219.TIF
8366	7738	Grain Warehouse Extension; Silos; Revised Arrangement; Sections; Scheme B;Scheme a	Simon-Carves Handling Ltd	10/8/1965	A0	FP026220.TIF
8576	7737	Grain Warehouse Extension; Collection Conveyors; Proposed Tension Arrangement	Simon-Carves Handling Ltd	7/12/1966	A0	FP026222.TIF
8573	7734	Grain Warehouse Extension; Weigher Floor; Details Of Loading-Out Hopper And Machinery Opening; 91.5' Level	Simon-Carves Handling Ltd	7/12/1966	A1	FP026225.TIF
8573	7734	Grain Warehouse Extension; Weigher Floor; Details Of Loading-Out Hopper And Machinery Opening; 91.5' Level	Simon-Carves Handling Ltd	7/12/1966	A1	FP026227.TIF
0	7732	Grain Warehouse Extension; Drawing Record	Kinnear & Gordon	7/9/1968	A0	FP026228.TIF
0	7731	Grain Warehouse Extension; Piling Record	Kinnear & Gordon	2/4/1967	A1	FP026229.TIF
9556	7729	Grain Warehouse Extension; Loading Bays; Plan Of Floor Area; Paving; Drainage; Reinforcement Layout And Details	Kinnear & Gordon	6/6/1968	A0	FP026231.TIF
9262	7728	Grain Warehouse Extension; Temporary Openings At Collector Floor; Plans; Section; Reinforcement	Kinnear & Gordon	10/24/1967	A1	FP026233.TIF
9229	7726	Grain Warehouse Extension; Rainwater Goods; General Arrangement	Kinnear & Gordon	10/25/1967	A0	FP026234.TIF
9228	7725	Grain Warehouse Extension; Plumber Work; General Arrangement	Kinnear & Gordon	10/23/1967	A0	FP026235.TIF
9215	7724	Grain Warehouse Extension; Loading Block East Wall Above Distributing Floor; Reinforcement; Plans; Sections; Elevations	Kinnear & Gordon	10/19/1967	A0	FP026236.TIF
9214	7723	Grain Warehouse Extension; Loading Block North Wall Above Distributing Floor; Reinforcement; Plans; Sections; Elevation (Sheet 2 Of 2)	Kinnear & Gordon	10/16/1967	A0	FP026237.TIF

Drg No	Plan No	Title of Drawing	Prep By	Date	Size	Filename
9213	7722	Grain Warehouse Extension; Loading Block North Wall Above Distributing Floor; Reinforcement; Plans; Sections; Elevation (Sheet 1 Of 2)	Kinnear & Gordon	10/12/1967	A0	FP026238.TIF
9227	7721	Grain Warehouse Extension;Roof; Slab; Reinforcement; Plan; Sections (Sheet 3 Of 3)	Kinnear & Gordon	10/24/1967	A0	FP026239.TIF
9195	7719	Grain Warehouse Extension; Roof Slab; Reinforcement; Plans; Sections (Sheet 1 Of 3)	Kinnear & Gordon	10/2/1967	A0	FP026241.TIF
9212	7718	Grain Warehouse Extension; Roof Beams; Reinforcement; Elevations; Sections (Sheet 6 Of 6)	Kinnear & Gordon	10/6/1967	A0	FP026242.TIF
9211	7717	Grain Warehouse Extension; Roof Beams; Elevations; Sections; Reinforcement; (Sheet 5 Of 6)	Kinnear & Gordon	10/19/1967	A0	FP026243.TIF
9210	7716	Grain Warehouse Extension; Roof Beams; Reinforcement; Elevations Sections; (Sheet 4 Of 6)	Kinnear & Gordon	10/17/1967	A0	FP026244.TIF
9194	7715	Grain Warehouse Extension; Roof Beams; Reinforcement; Elevations; Sections;(Sheet 3 Of 6)	Kinnear & Gordon	9/30/1967	A0	FP026245.TIF
9193	7714	Grain Warehouse Extension; Roof Beams; Reinforcement; Elevations; Sections (Sheet 2 Of 6)	Kinnear & Gordon	9/29/1967	A0	FP026246.TIF
9191	7712	Grain Warehouse Extension; Roof; Plan; Sections; Beam Locations	Kinnear & Gordon	9/30/1967	A0	FP026248.TIF
9171	7710	Grain Warehouse Extension; Distributing Floor Over Slide Iii; Plan; Sections; Reinforcement;(Sheet 2 Of 2)	Kinnear & Gordon	9/14/1967	A0	FP026250.TIF
9170	7709	Grain Warehouse Extension; Distributing Floor Over Slide Iii; Plan; Section; Reinforcement (Sheet 1 Of 2)	Kinnear & Gordon	9/13/1967	A0	FP026251.TIF
9187	7708	Grain Warehouse Extension; Main;Block; North Wall Above Distributing Floor; Elevation; Plans; Sections; Reinforcement	Kinnear & Gordon	9/21/1967	A0	FP026252.TIF
9169	7707	Grain Warehouse Extension; Main Block ;East Wall Above Distributing Floor; Elevation; Plans; Section; Reinforcement	Kinnear & Gordon	9/15/1967	A0	FP026253.TIF
9110	7706	Grain Warehouse Extension; Roof Over Link At Collecting Floor Level; Elevations; Sections; Plan; Reinforcement	Kinnear & Gordon	7/26/1967	A0	FP026254.TIF
9190	7705	Grain Warehouse Extension; Loading Block; West Wall Above Distributing Floor; Elevation; Plans; Sections; Reinforcement	Kinnear & Gordon	10/4/1967	A0	FP026255.TIF
9118	7704	Grain Warehouse Extension; Walls Above Distributing Floor; Pilaster Reinforcement; Plan; Sections	Kinnear & Gordon	8/2/1967	A0	FP026256.TIF

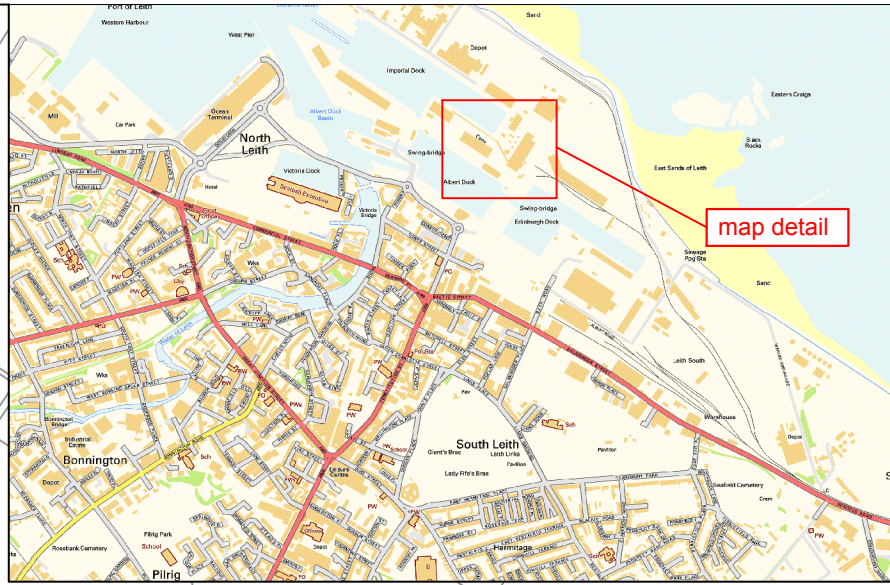
Drp No	Plan No	Title of Drawing	Prep By	Date	Size	Filename
9168	7703	Grain Warehouse Extension; Stairwell Walls Above Distributing Floor; Elevations; Sections; Reinforcement	Kinnear & Gordon	9/6/1967	A0	FP026257.TIF
9109	7702	Grain Warehouse Extension; Main Block; West Wall Above Distributing Floor; Elevation; Sections; Reinforcement	Kinnear & Gordon	8/1/1967	A1	FP026258.TIF
9150	7701	Grain Warehouse Extension; Walls Above Distributing Floor; General Arrangement; Elevations; Plan; Sections	Kinnear & Gordon	9/1/1967	A0	FP026259.TIF
491	3370	Base Plate, Staircase Cast Metal, Sides Of Houses & Gallery	Leith Dock Commission	10/9/1966	A1	FP026280.TIF
2926/2	0	Imperial Grain Silo Replacement Fire Escape Stair Foundation Plan & Elevations	Mason & Partners	7/1/2003	A1	FP050064.TIF
2926/1	0	Imperial Grain Silo Replacement Fire Escape Stair Plans & Sections	Mason & Partners	7/1/2003	A1	FP050065.TIF
355/IG S/M/01	0	Imperial Grain Silo Repairs to 1934 Building Outer Silo Walls - Phase 1 - West Elevation Showing Location of Repairs	Buchanan Laird	9/1/2003	A1	FP050066.TIF
355/IG S/M/05	0	Imperial Grain Silo Repairs to 1934 Building Outer Silo Walls - Phase 1 Construction Details of West Silo Wall	Buchanan Laird	9/1/2003	A1	FP050067.TIF
355/IG S/M/06	0	Imperial Grain Silo Repairs to 1934 Building Outer Silo Walls - Phase 1 Construction Details of North Silo Wall	Buchanan Laird	9/1/2003	A1	FP050068.TIF
355/IG S/M/04	0	Imperial Grain Silo Repairs to 1934 Building Outer Silo Walls - Phase 1 Construction Details of East Silo Wall	Buchanan Laird	9/1/2003	A1	FP050069.TIF
355/IG S/M/02	0	Imperial Grain Silo Repairs to 1934 Building Outer Silo Walls - Phase 1 East Elevation Showing Location of Repairs	Buchanan Laird	9/1/2003	A1	FP050070.TIF
355/IG S/M/03	0	Imperial Grain Silo Repairs to 1934 Building Outer Silo Walls - Phase 1 South Elevation Showing Location of Repairs	Buchanan Laird	9/1/2003	A1	FP050071.TIF
0	0	Imperial Grain Silo Site Location Map	Buchanan Laird	9/1/2003	A4	FP050072.TIF
0	0	Imperial Grain Silo Repairs to 1934 Building Outer Silo Walls - Phase 1 - Location Plan	Buchanan Laird	9/1/2003	A3	FP050072.TIF
355/IG S/M/08	0	Imperial Grain Silo Repairs to 1934 Building Outer Silo Walls - Phase 1 Detail of Existing Fire Stair Bracket	Buchanan Laird	9/1/2003	A4	FP050073.TIF
355/IG S/M/07	3906	Imperial Grain Silo Repairs to 1934 Building Outer Silo Walls - Phase 1 - Construction Details of North Silo Wall	Buchanan Laird	9/1/2003	A1	FP050074.TIF

APPENDIX 4: DISCOVERY AND EXCAVATION IN SCOTLAND ENTRY

LOCAL AUTHORITY:	Edinburgh City Council
PROJECT TITLE/SITE NAME:	Imperial Dock Grain Warehouse, Port of Leith Historic Building Survey
PROJECT CODE:	IGRA
PARISH:	Edinburgh
NAME OF CONTRIBUTOR:	Dr M Cressey
NAME OF ORGANISATION:	CFA Archaeology Ltd,
TYPE(S) OF PROJECT:	Standing Building Recording
NHRE NO(S):	NT27NE 57.23
SITE/MONUMENT TYPE(S):	Grain Warehouse
SIGNIFICANT FINDS:	N/A
NGR (2 letters, 6 figures)	NT 12313 74254
START DATE (this season)	May 2016
END DATE (this season)	June 2016
PREVIOUS WORK (incl. DES ref.)	None
MAIN (NARRATIVE) DESCRIPTION: (May include information from other fields)	<p>A historic building survey was conducted on a Category B Listed Imperial Grain Warehouse in advance of its demolition.</p> <p>The building was constructed in 1934 using re-enforced concrete that included a grain distribution floor and grain supply belts to 70 individual grain silos. A delivery section, with seven individual floors, was accessed by a staircase and passenger lift. In 1957-59 a 7 bay extension was added and the building was extended yet again in 1968 with the addition of a further 12 bays. During the 1980s investment was made in improving the plant and machinery including a new dust extraction and delivery system and in 2004 a programme of concrete repairs was carried out to address rusting reinforcing bars and spalling concrete. The Imperial Dock Grain Warehouse continued in operation until the end of 2006, when the prohibitively expensive cost of upgrading it to meet new health and safety legislation together with uneconomic running costs forced its closure.</p> <p>The survey has demonstrated that all four external elevations of the Imperial Grain Warehouse have remained largely unaltered since they were constructed. The largest modification occurred to the fenestration of the Phase 1 (1934) block when all the metal-framed windows were replaced by PVC windows in 1975. Presumably this not only allowed more light into the building but also ensured that the interior working floors were suitably pressurised for more efficient dust extraction.</p> <p>All the operational machinery within the warehouse has remained untouched since the warehouse closed in 2006.</p>
PROPOSED FUTURE WORK:	DES entry to be updated with results from watching Brief during demolition
CAPTION(S) FOR ILLUSTRS:	The south and west-facing elevations of the Imperial Grain Warehouse
SPONSOR OR FUNDING BODY:	Forth Ports Ltd
ADDRESS OF MAIN CONTRIBUTOR:	Old Engine House, Eskmills Business Park, Musselburgh, EH21 7PQ
EMAIL ADDRESS:	cfa@cfa-archaeology.co.uk
ARCHIVE LOCATION (intended/deposited)	Report Lodged with Edinburgh Council SMR NHRE intended archive



- Key:**
- Site Boundary
 - 12 → Photo number and direction
 - A Imperial Grain Warehouse
 - B Grain Conveyor
 - C Substation
 - D Grain dryer Control Room
 - E Dust silos extractor
 - F Former grain warehouse offices



Reproduced with the permission of Ordnance Survey on behalf of The Controller of Her Majesty's Stationery Office, © Crown copyright. CFA Archaeology Ltd, Old Engine House, Eskmills Park, Musselburgh EH21 7PQ AL100034785

CFA ARCHAEOLOGY LTD
 The Old Engine House
 Eskmills Park
 Musselburgh
 East Lothian, EH21 7PQ
 T: 0131 273 4380
 F: 0131 273 4381
 info@cfa-archaeology.co.uk
 www.cfa-archaeology.co.uk

Title:
 Site plan showing the buildings, ancillary building and photo locations

Project:
 Imperial Dock Grain Warehouse, Port of Leith. Historic Building Survey

Client:
 Forth Ports Ltd

Scale at A3:
 1:1250

Drawn by: GC	Checked: SW	Date: 01/06/2016
-----------------	----------------	---------------------

Report No: 3444	Fig. No: 1
--------------------	---------------

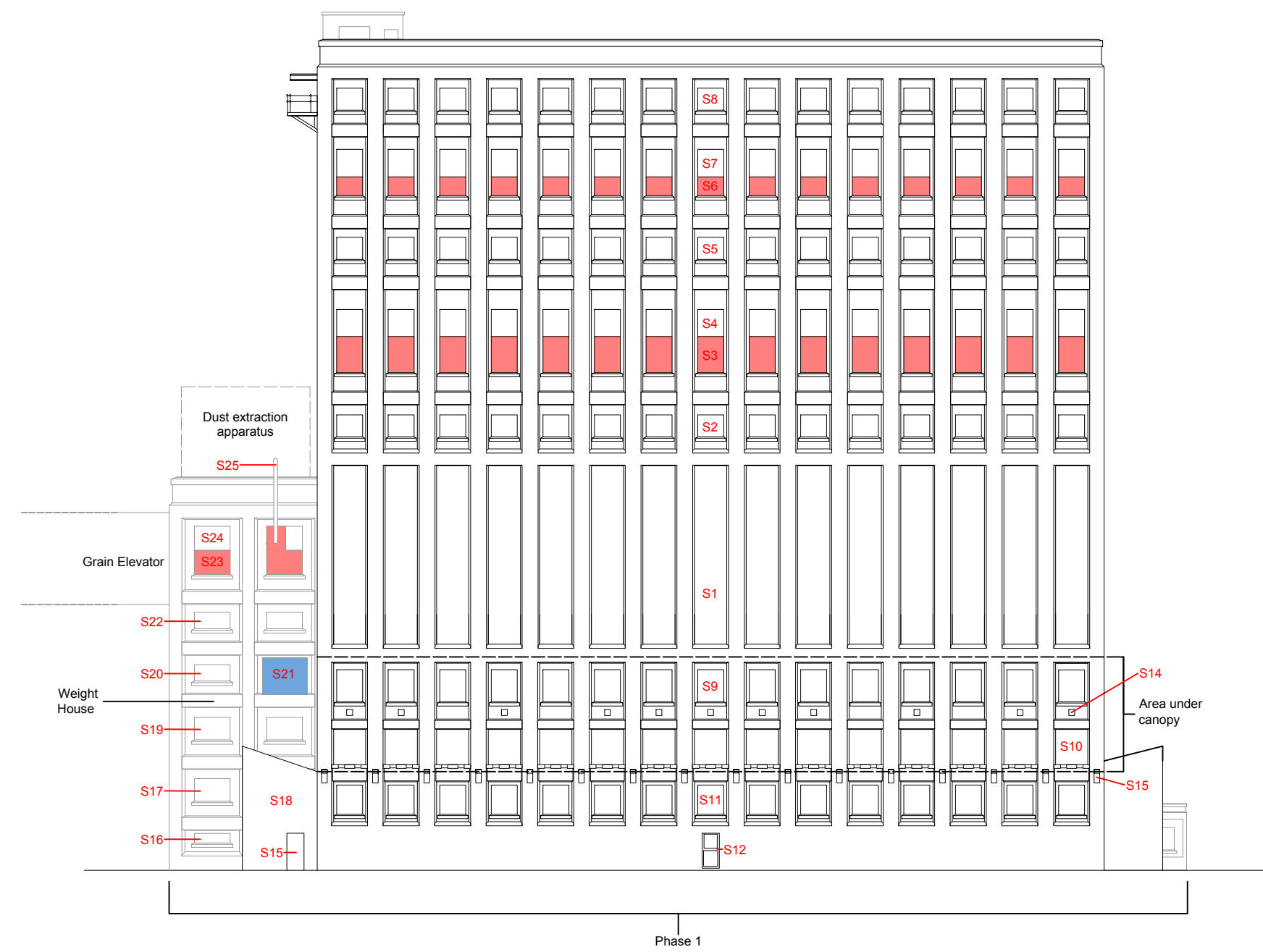


Fig. 2 South-facing elevation

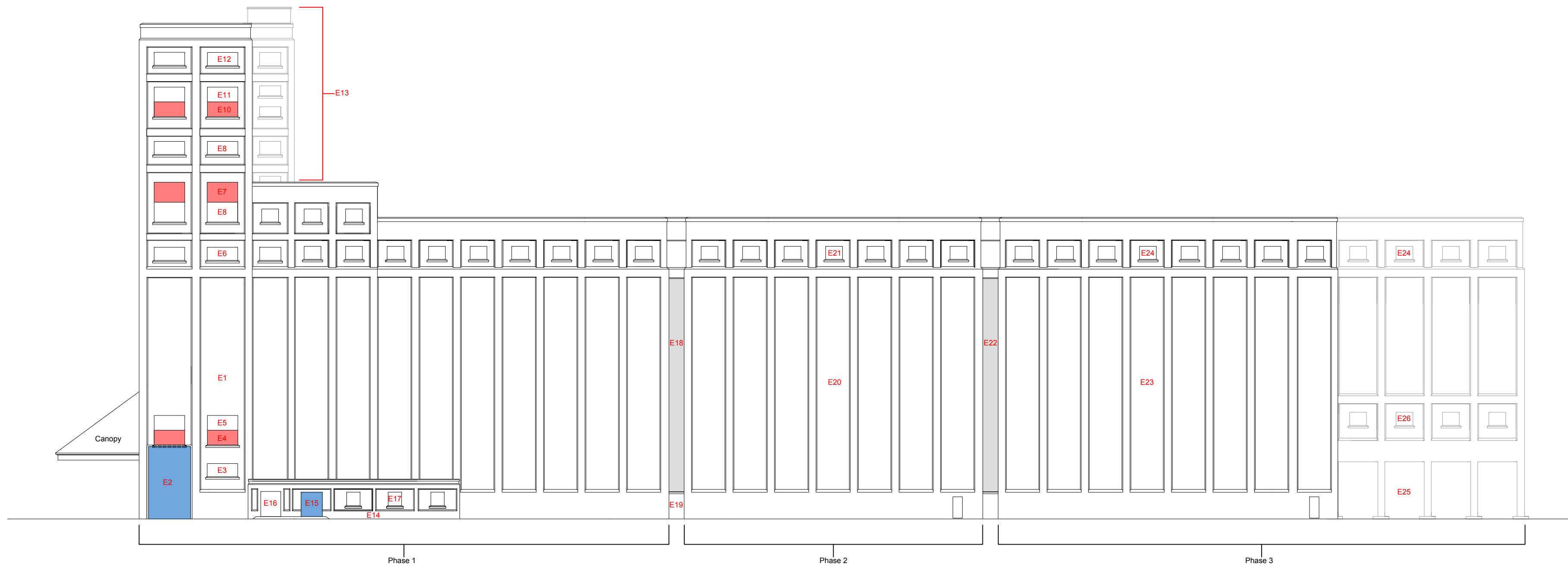


Fig. 3 East-facing elevation

Key:

- Brick blocking
- Metal shutter door
- Gap



Title:
Elevation drawings

Project:
Imperial Dock Grain Warehouse,
Port of Leith. Historic Building
Survey

Client:
Forth Ports Ltd

Scale at A3:
1:300

Drawn by: GC	Checked: SW	Date: 06/06/2016
-----------------	----------------	---------------------

Report No: 3444	Fig. No: 2 - 3
--------------------	-------------------



Key:

- Brick blocking
- Metal shutter door
- Gap

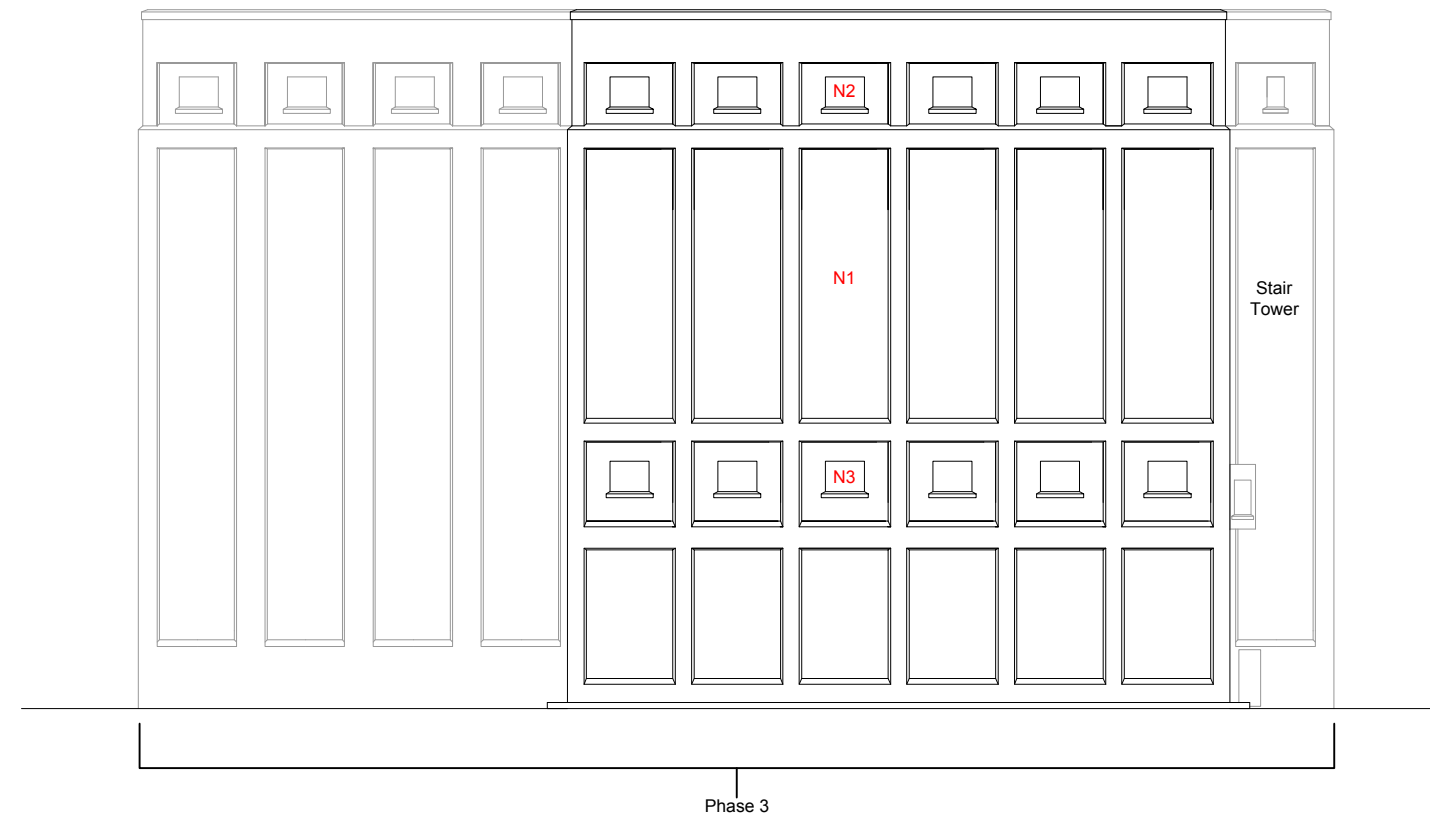


Fig. 4 North-facing elevation

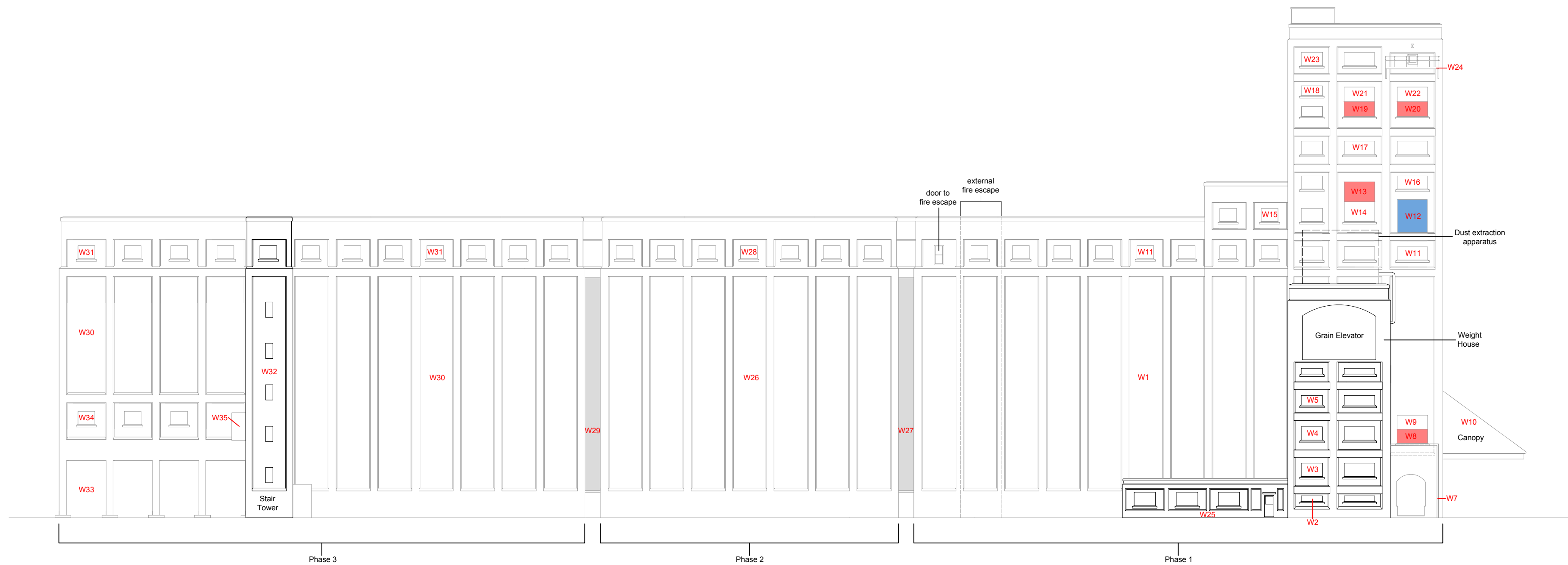


Fig. 5 West-facing elevation



Title:
Elevation drawings

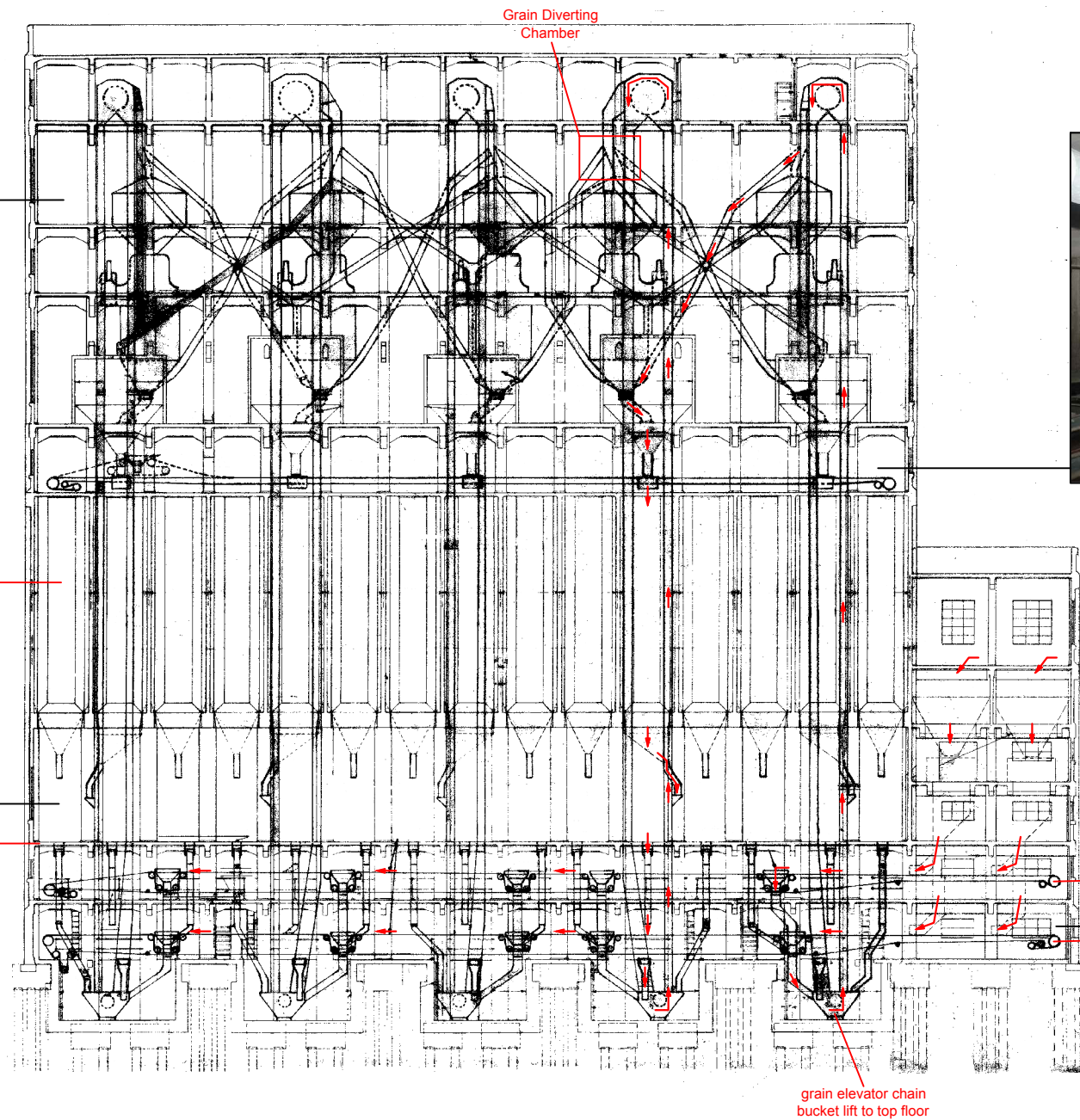
Project:
Imperial Dock Grain Warehouse,
Port of Leith. Historic Building
Survey

Client:
Forth Ports Ltd

Scale at A3:
1:300

Drawn by: GC	Checked: SW	Date: 06/06/2016
-----------------	----------------	---------------------

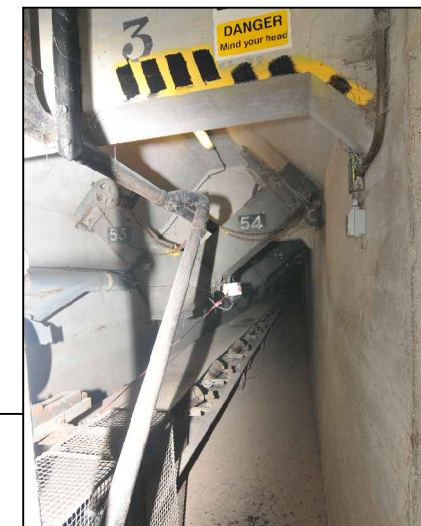
Report No: 3444	Fig. No: 4 - 5
--------------------	-------------------



Distribution floor



Delivery floor



Lower conveyor belt

Key:

→ Direction of grain travel

Fig. 28 Technical grain distribution drawing

CFA ARCHAEOLOGY LTD
 The Old Engine House
 Eskmills Park
 Musselburgh
 East Lothian, EH21 7PQ
 T: 0131 273 4380
 F: 0131 273 4381
 info@cfa-archaeology.co.uk
 www.cfa-archaeology.co.uk

Title:

Project:
 Imperial Dock Grain Warehouse,
 Port of Leith. Historic Building
 Survey

Client:
 Forth Ports Ltd

Scale at A3:
 nts

Drawn by: GC	Checked: SW	Date: 06/06/2016
-----------------	----------------	---------------------

Report.No: 3444	Fig. No: 28 - 29
--------------------	---------------------

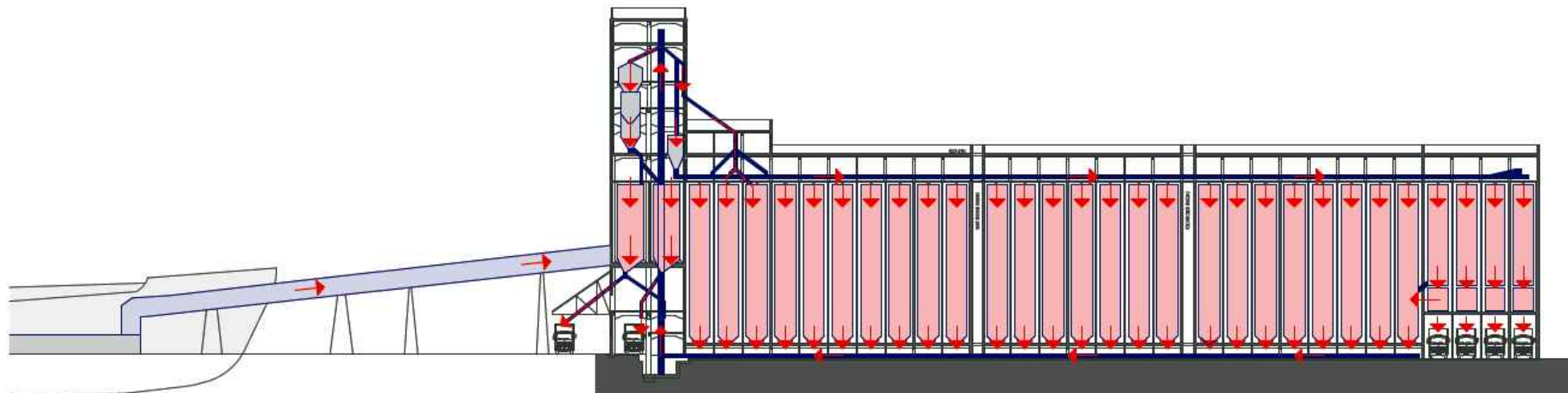


Fig. 29 Simplified grain distribution drawing (after LDN)



Fig. 6 Grain Conveyor incline to the weighing house on the west elevation



Fig. 7 Grain Conveyor crossover from incline to horizontal

Project:
Imperial Dock Grain Warehouse, Port of Leith, Historic Building Survey



CFA ARCHAEOLOGY LTD
The Old Engine House
Eskmills Park
Musselburgh
East Lothian, EH21 7PQ
T: 0131 273 4380
F: 0131 273 4381
info@cfa-archaeology.co.uk
www.cfa-archaeology.co.uk

Client:
Forth Ports Ltd

Drawn by: GC	Checked: SW	Date: 14/06/16
Report No: 3444		Fig. No: 6 - 7



Fig. 8 Grain Conveyor alongside the Imperial Docks quayside



Fig. 9 West terminus of the grain conveyor and an earlier surviving section dating to 1937

Project:
Imperial Dock Grain Warehouse, Port of Leith, Historic Building Survey



CFA ARCHAEOLOGY LTD
The Old Engine House
Eskmills Park
Musselburgh
East Lothian, EH21 7PQ
T: 0131 273 4380
F: 0131 273 4381
info@cfa-archaeology.co.uk
www.cfa-archaeology.co.uk

Client:
Forth Ports Ltd

Drawn by: GC	Checked: SW	Date: 14/06/16
Report No: 3444		Fig. No: 8 - 9



Fig. 10 Imperial Dock East Sub Station - South-west-facing elevation



Fig. 11 Imperial Dock East Sub Station - South-east-facing elevation

Project:
Imperial Dock Grain Warehouse, Port of Leith, Historic Building Survey



CFA ARCHAEOLOGY LTD
The Old Engine House
Eskmills Park
Musselburgh
East Lothian, EH21 7PQ
T: 0131 273 4380
F: 0131 273 4381
info@cfa-archaeology.co.uk
www.cfa-archaeology.co.uk

Client:
Forth Ports Ltd

Drawn by: GC	Checked: SW	Date: 14/06/16
Report No: 3444		Fig. No: 10 - 11



Fig. 12 Imperial Dock East Sub Station - North-west-facing elevation



Fig. 13 Building D Grain Dryer Control Room

Project:
Imperial Dock Grain Warehouse, Port of Leith, Historic Building Survey



CFA ARCHAEOLOGY LTD
The Old Engine House
Eskmills Park
Musselburgh
East Lothian, EH21 7PQ
T: 0131 273 4380
F: 0131 273 4381
info@cfa-archaeology.co.uk
www.cfa-archaeology.co.uk

Client:
Forth Ports Ltd

Drawn by: GC	Checked: SW	Date: 14/06/16
Report No: 3444		Fig. No: 12 - 13



Fig. 14 East-facing elevation of the Dust Extractor Silos



Fig. 15 South-facing elevation of the Dust Extractor Silos

Project:
Imperial Dock Grain Warehouse, Port of Leith, Historic Building Survey



CFA ARCHAEOLOGY LTD
The Old Engine House
Eskmills Park
Musselburgh
East Lothian, EH21 7PQ
T: 0131 273 4380
F: 0131 273 4381
info@cfa-archaeology.co.uk
www.cfa-archaeology.co.uk

Client:
Forth Ports Ltd

Drawn by: GC	Checked: SW	Date: 14/06/16
Report No: 3444		Fig. No: 14 - 15



Fig. 16 Former Grain Warehouse Administration Building

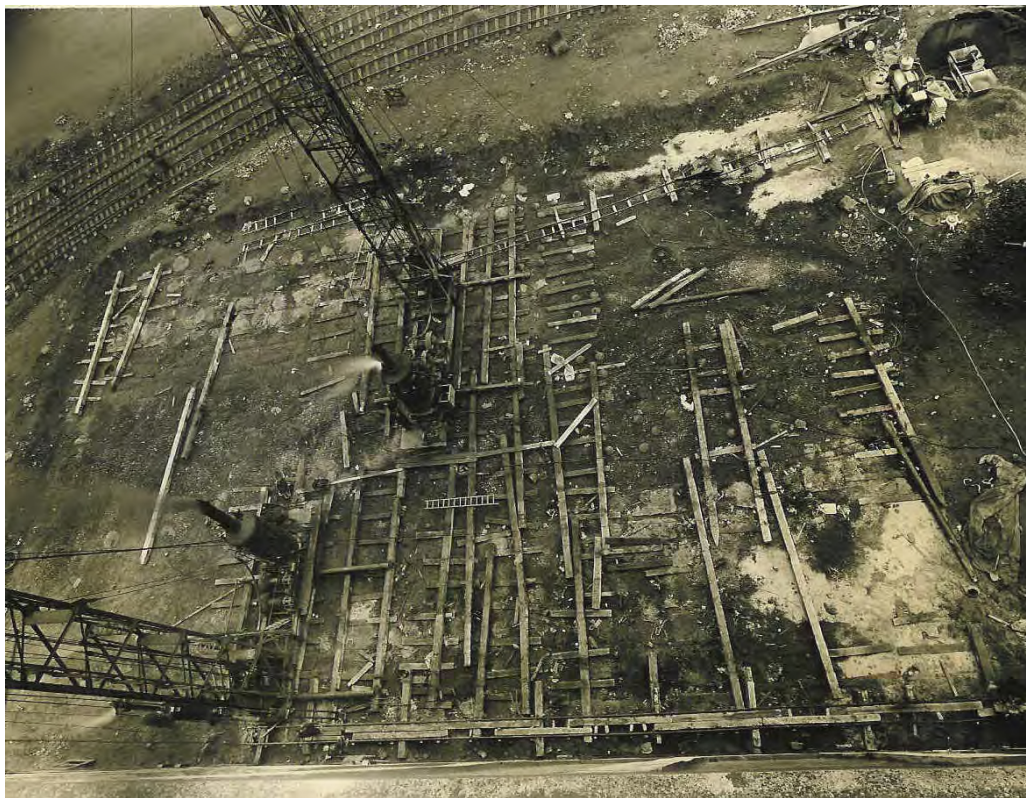


Fig. 17 Deep piling the foundations for the grain warehouse in 1933

Project:
Imperial Dock Grain Warehouse, Port of Leith, Historic Building Survey



CFA ARCHAEOLOGY LTD
The Old Engine House
Eskmills Park
Musselburgh
East Lothian, EH21 7PQ
T: 0131 273 4380
F: 0131 273 4381
info@cfa-archaeology.co.uk
www.cfa-archaeology.co.uk

Client:
Forth Ports Ltd

Drawn by: GC	Checked: SW	Date: 14/06/16
Report No: 3444		Fig. No: 16 - 17



Fig. 18 South and east-facing elevations under construction



Fig. 19 The 1934 warehouse after completion

Project:
Imperial Dock Grain Warehouse, Port of Leith, Historic Building Survey



CFA ARCHAEOLOGY LTD
The Old Engine House
Eskmills Park
Musselburgh
East Lothian, EH21 7PQ
T: 0131 273 4380
F: 0131 273 4381
info@cfa-archaeology.co.uk
www.cfa-archaeology.co.uk

Client:
Forth Ports Ltd

Drawn by: GC	Checked: SW	Date: 14/06/16
Report No: 3444		Fig. No: 18 - 19



Fig. 20 Piling operations. Vertical view taken from the roof of the existing silos

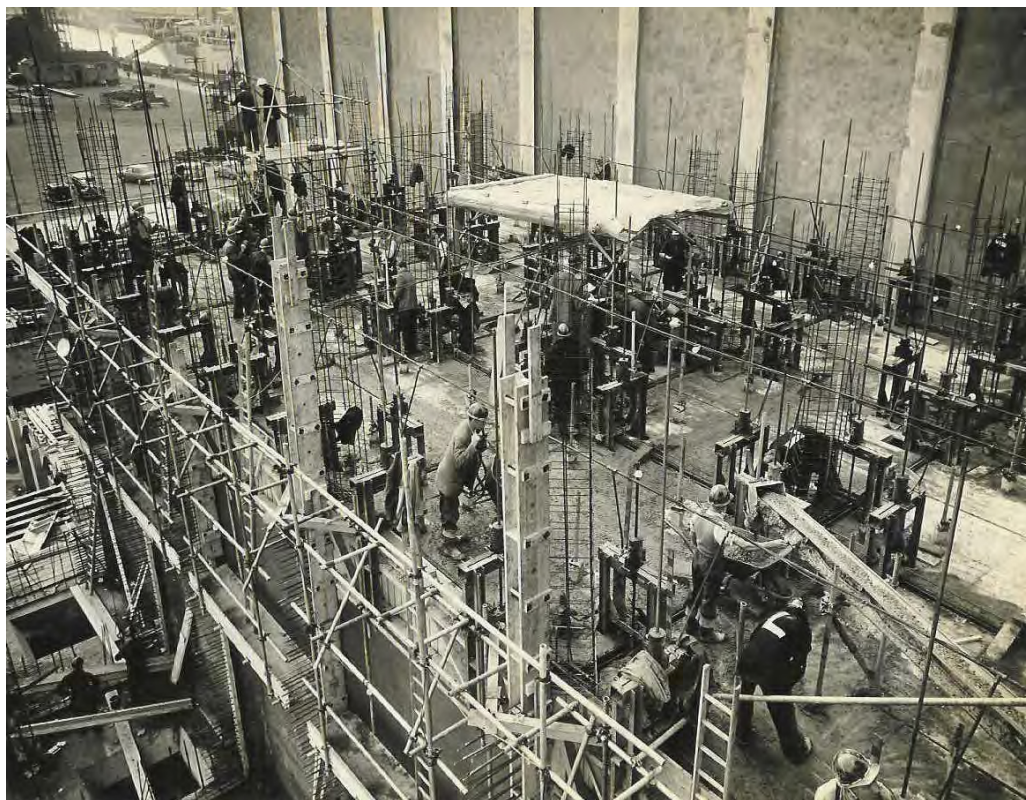


Fig. 21 General view of a deck under construction with concrete supplied on a conveyor belt

Project:
Imperial Dock Grain Warehouse, Port of Leith, Historic Building Survey



CFA ARCHAEOLOGY LTD
The Old Engine House
Eskmills Park
Musselburgh
East Lothian, EH21 7PQ
T: 0131 273 4380
F: 0131 273 4381
info@cfa-archaeology.co.uk
www.cfa-archaeology.co.uk

Client:
Forth Ports Ltd

Drawn by: GC	Checked: SW	Date: 14/06/16
Report No: 3444		Fig. No: 20 - 21

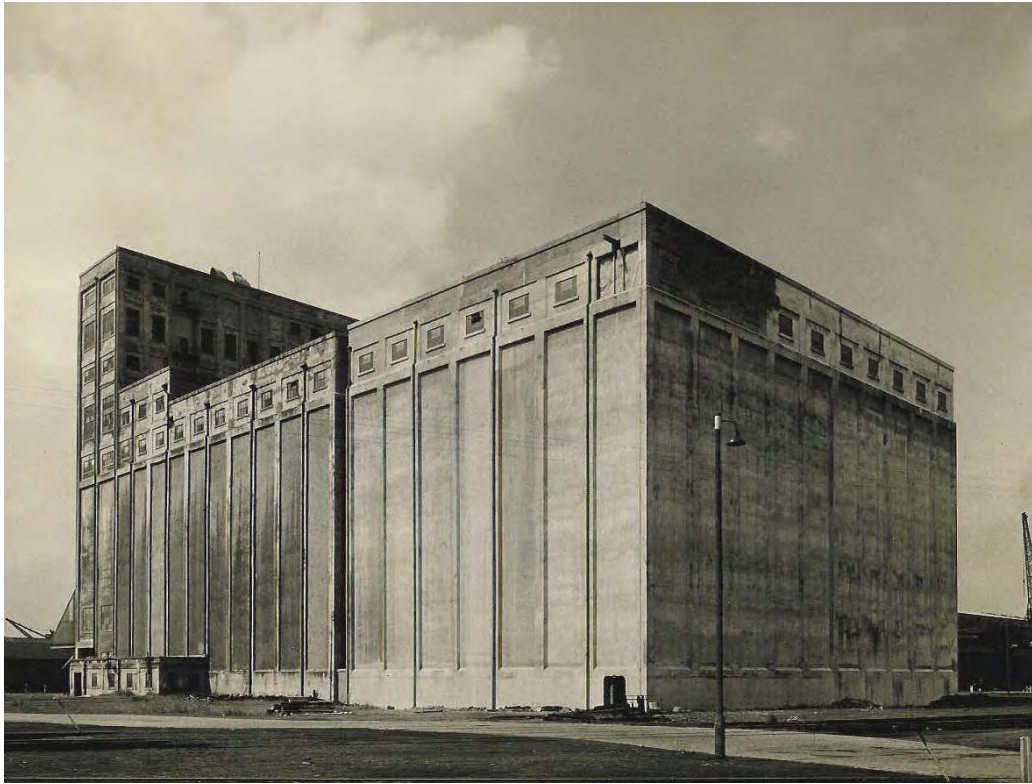


Fig. 22 View of the Phase 2 warehouse completed in 1958



Fig. 23 Fitting out the Distribution floor

Project:
Imperial Dock Grain Warehouse, Port of Leith, Historic Building Survey



CFA ARCHAEOLOGY LTD
The Old Engine House
Eskmills Park
Musselburgh
East Lothian, EH21 7PQ
T: 0131 273 4380
F: 0131 273 4381
info@cfa-archaeology.co.uk
www.cfa-archaeology.co.uk

Client:
Forth Ports Ltd

Drawn by: GC	Checked: SW	Date: 14/06/16
Report No: 3444		Fig. No: 22 - 23



Fig. 24 General view of Phase 3 collecting floor under construction



Fig. 25 Construction of the loading bays completed on the east-facing elevation

Project:
Imperial Dock Grain Warehouse, Port of Leith, Historic Building Survey



CFA ARCHAEOLOGY LTD
The Old Engine House
Eskmills Park
Musselburgh
East Lothian, EH21 7PQ
T: 0131 273 4380
F: 0131 273 4381
info@cfa-archaeology.co.uk
www.cfa-archaeology.co.uk

Client:
Forth Ports Ltd

Drawn by: GC	Checked: SW	Date: 14/06/16
Report No: 3444		Fig. No: 24 - 25



Fig. 26 Phase 3 block nearing completion



Fig. 27 Mobile grain elevator alongside Imperial Dock

Project:
Imperial Dock Grain Warehouse, Port of Leith, Historic Building Survey



CFA ARCHAEOLOGY LTD
The Old Engine House
Eskmills Park
Musselburgh
East Lothian, EH21 7PQ
T: 0131 273 4380
F: 0131 273 4381
info@cfa-archaeology.co.uk
www.cfa-archaeology.co.uk

Client:
Forth Ports Ltd

Drawn by: GC	Checked: SW	Date: 14/06/16
Report No: 3444		Fig. No: 26 - 27



Fig. 30 Ground floor conveyor



Fig. 31 Grain delivery floor

Project:
Imperial Dock Grain Warehouse, Port of Leith, Historic Building Survey



CFA ARCHAEOLOGY LTD
The Old Engine House
Eskmills Park
Musselburgh
East Lothian, EH21 7PQ
T: 0131 273 4380
F: 0131 273 4381
info@cfa-archaeology.co.uk
www.cfa-archaeology.co.uk

Client:
Forth Ports Ltd

Drawn by: GC	Checked: SW	Date: 14/06/16
Report No: 3444		Fig. No: 30 - 31



Fig. 32 Garner floor



Fig. 33 Distribution floor

Project:
Imperial Dock Grain Warehouse, Port of Leith, Historic Building Survey



CFA ARCHAEOLOGY LTD
The Old Engine House
Eskmills Park
Musselburgh
East Lothian, EH21 7PQ
T: 0131 273 4380
F: 0131 273 4381
info@cfa-archaeology.co.uk
www.cfa-archaeology.co.uk

Client:
Forth Ports Ltd

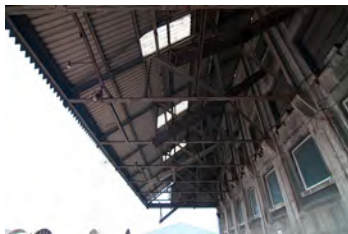
Drawn by: GC	Checked: SW	Date: 14/06/16
Report No: 3444		Fig. No: 32 - 33



IGRA 001.NEF



IGRA 002.NEF



IGRA 003.NEF



IGRA 004.NEF



IGRA 005.NEF



IGRA 006.NEF



IGRA 007.NEF



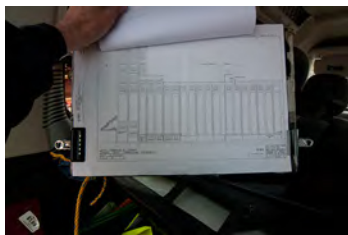
IGRA 008.NEF



IGRA 009.NEF



IGRA 010.NEF



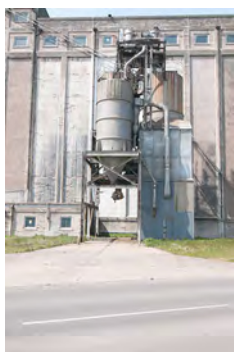
IGRA 011.NEF



IGRA 012.NEF



IGRA 013.NEF



IGRA 014.NEF



IGRA 015.NEF



IGRA 016.NEF



IGRA 017.NEF



IGRA 018.NEF



IGRA 019.NEF



IGRA 020.NEF



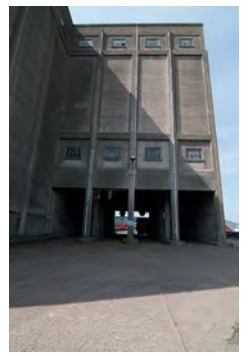
IGRA 021.NEF



IGRA 022.NEF



IGRA 023.NEF



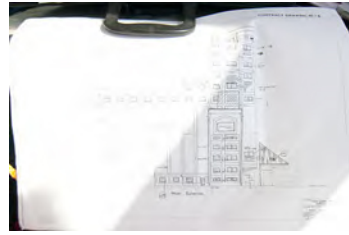
IGRA 024.NEF



IGRA 025.NEF



IGRA 026.NEF



IGRA 027.NEF



IGRA 028.NEF



IGRA 029.NEF



IGRA 030.NEF



IGRA 031.NEF



IGRA 032.NEF



IGRA 033.NEF



IGRA 034.NEF



IGRA 035.NEF



IGRA 036.NEF



IGRA 037.NEF



IGRA 038.NEF



IGRA 039.NEF



IGRA 040.NEF



IGRA 041.NEF



IGRA 042.NEF



IGRA 043.NEF



IGRA 044.NEF



IGRA 045.NEF



IGRA 046.NEF



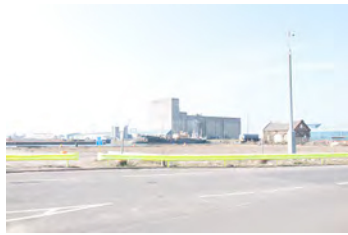
IGRA 047.NEF



IGRA 048.NEF



IGRA 049.NEF



IGRA 050.NEF



IGRA 051.NEF



IGRA 052.NEF



IGRA 053.NEF



IGRA 054.NEF



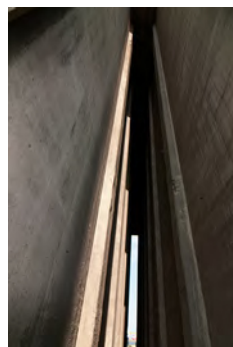
IGRA 055.NEF



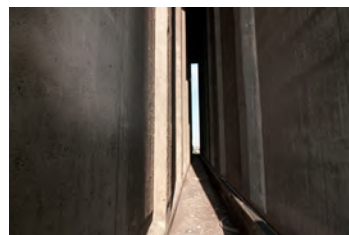
IGRA 056.NEF



IGRA 057.NEF



IGRA 058.NEF



IGRA 059.NEF



IGRA 060.NEF

QUARTER MASTER AUTHORITY
THE UNAUTHORISED
REMOVAL OF GRAIN
WILL RESULT IN
PROSECUTION.



IGRA 061.NEF



IGRA 062.NEF



IGRA 063.NEF



IGRA 064.NEF



IGRA 065.NEF



IGRA 066.NEF



IGRA 067.NEF



IGRA 068.NEF



IGRA 069.NEF



IGRA 070.NEF



IGRA 071.NEF



IGRA 072.NEF



IGRA 073.NEF



IGRA 074.NEF



IGRA 075.NEF



IGRA 076.NEF



IGRA 077.NEF



IGRA 078.NEF



IGRA 079.NEF